

The BMW 1 Series
Convertible

www.bmw.co.uk



The Ultimate
Driving Machine



THE BMW 1 SERIES CONVERTIBLE.

JOY BRINGS SUMMER TO EVERY ROAD.

BMW EfficientDynamics
Less emissions. More driving pleasure.

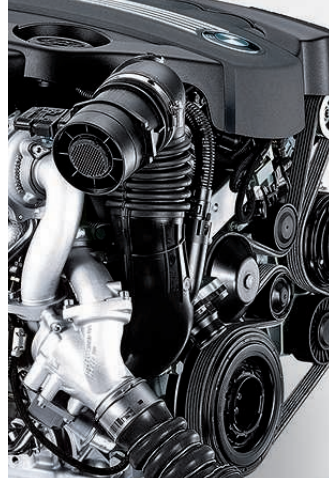


official partner of the
Olympic and Paralympic Games



A 365 DAY HOLIDAY.

Hardly anything changes a city more than a sunny day, or a warm summer night. People bloom and appear to spend their entire lives outside. With the BMW 1 Series Convertible you can do something similar – and take the joy of driving into the open air. Enjoy its outstanding handling or simply enjoy the stylish interior that always remains pleasantly cool, even with the roof down. With this car, when the sun's out, it will always follow you. As will the admiring glances.



The BMW 1 Series Convertible

JOY FOR ALL SEASONS.

- 06 Exterior**
Conviction with every line.
- 08 Highlights**
Design in a new light.
- 10 BMW EfficientDynamics**
Sustainable thinking.
- 12 Performance**
Inspiring power.
- 14 Driving experience**
Perfectly fine-tuned.
- 16 BMW ConnectedDrive**
Your network.
- 20 New BMW EfficientDynamics technologies**
Aero Curtain, reducing air resistance.
- 22 Interior**
Quality, elegance, spaciousness.

Technology

INNOVATION MEETS INSPIRATION.

- 26 BMW EfficientDynamics**
The technology package for less fuel consumption and lower emissions.
- 28 Engines**
Maximum performance with minimum consumption.
- 30 Chassis and Safety**
Systems for greater safety and driving pleasure.
- 34 BMW ConnectedDrive**
Intelligent networking for Convenience, Infotainment and Safety.
- 38 Open-topped pleasure**
The soft-top on the BMW 1 Series Convertible.

Equipment

AS INDIVIDUAL AS YOUR IMAGINATION.

- 40 Exclusive and Sport Plus Edition models**
- 42 Combination examples**
- 44 Exterior and upholstery colours**
- 46 Interior colours and trims**
- 48 Equipment packages**
- 50 Standard / Optional equipment**
- 58 M Sport models**
- 59 Genuine BMW Accessories**
Multi-faceted and individual.

Summary

THE NEW BMW 1 SERIES CONVERTIBLE OVERVIEW.

- 60 Standard Equipment**
- 64 Technical data**
- 66 London 2012 Olympic and Paralympic Games**
- 68 BMW Service and BMW Brand World**
Exclusive offers for BMW customers.

Editorial

JOY AT THE TOUCH OF A BUTTON.

City life can be fast and intense, so it's important to make the most of your free time. One way to do this is to choose a car with the enjoyment factor firmly built in. The BMW 1 Series Convertible is one such car. A touch of a button to fold down the roof on the morning drive to work, the lunchtime trip to the gym or a drive to an evening party with friends instantly transforms the experience into something very special.

It takes just 22 seconds to open the roof, giving driver and passengers perfect views of the skies and, thanks to the classic Convertible profile, an uninterrupted all-round outlook. But it's not just the views. The immediate surroundings are also a source of delight for all. The Alpine White interior trim, for instance, harmonises with new upholstery colours and exclusive paintwork. The picture is just as appealing on a practical level. With its BMW EfficientDynamics technology, the BMW 1 Series Convertible eases the pressure of city life with fewer fuel stops and low emissions. The same technology means greater performance and increased driving pleasure, too. There's also unlimited onboard entertainment thanks to the very first BMW Connected App, bringing global internet radio to the car. Music reaches the vehicle through an Apple iPhone and is played through the loudspeakers via the BMW Infotainment system.

www.bmw.co.uk/1SeriesConvertible

Equipment of model shown: BMW 123d

Engine: BMW TwinPower Turbo four-cylinder diesel engine
Output: 204hp (150kW)
Wheels: 17" light alloy Streamline-spoke style 370 with mixed tyres
Exterior colour: Vermilion Red Metallic
Upholstery: Oyster Boston leather
Interior trim: Light Walnut wood

For information on fuel consumption and CO₂ emissions, see pages 64 | 65.

Models shown in this brochure may not be available in the U.K.



BMW UK on Facebook
www.facebook.com/bmwuk

THE MOST BEAUTIFUL SKYLINE IN TOWN.

The profile of the BMW 1 Series Convertible.





THE NIGHT GETS A FACE LIFT.

Innovative light design.

Rediscover the world by day and by night, enjoy the freedom, feel alive. With its long sweeping bonnet, distinctive shoulderline and flat rear, the Convertible is shaped like the deck of a speed boat. When the wind streams over the harmonious lines of the BMW 1 Series Convertible, joy becomes a tangible experience. The short, acute A-pillar and the high-quality soft-top reinforce the open-air feel in this special Convertible.

Whether you're cruising along or driving through town, this car's sporty looks will always turn heads. The new optional rear lights with LED light bars, in conjunction with Xenon headlights give the night a deep red illumination, while the sharply angled front headlights focus constantly on the road. The white LED light bars reinforce the new front design of the BMW 1 Series Convertible and emphasise its athletic character.

www.bmw.co.uk/1SeriesConvertible

TAKES YOUR BREATH AWAY.

The Aero Curtain – a new BMW EfficientDynamics technology.

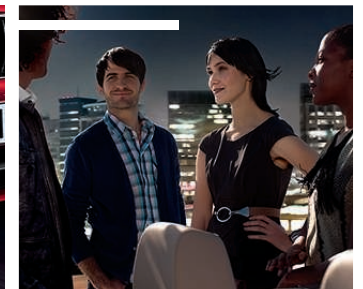
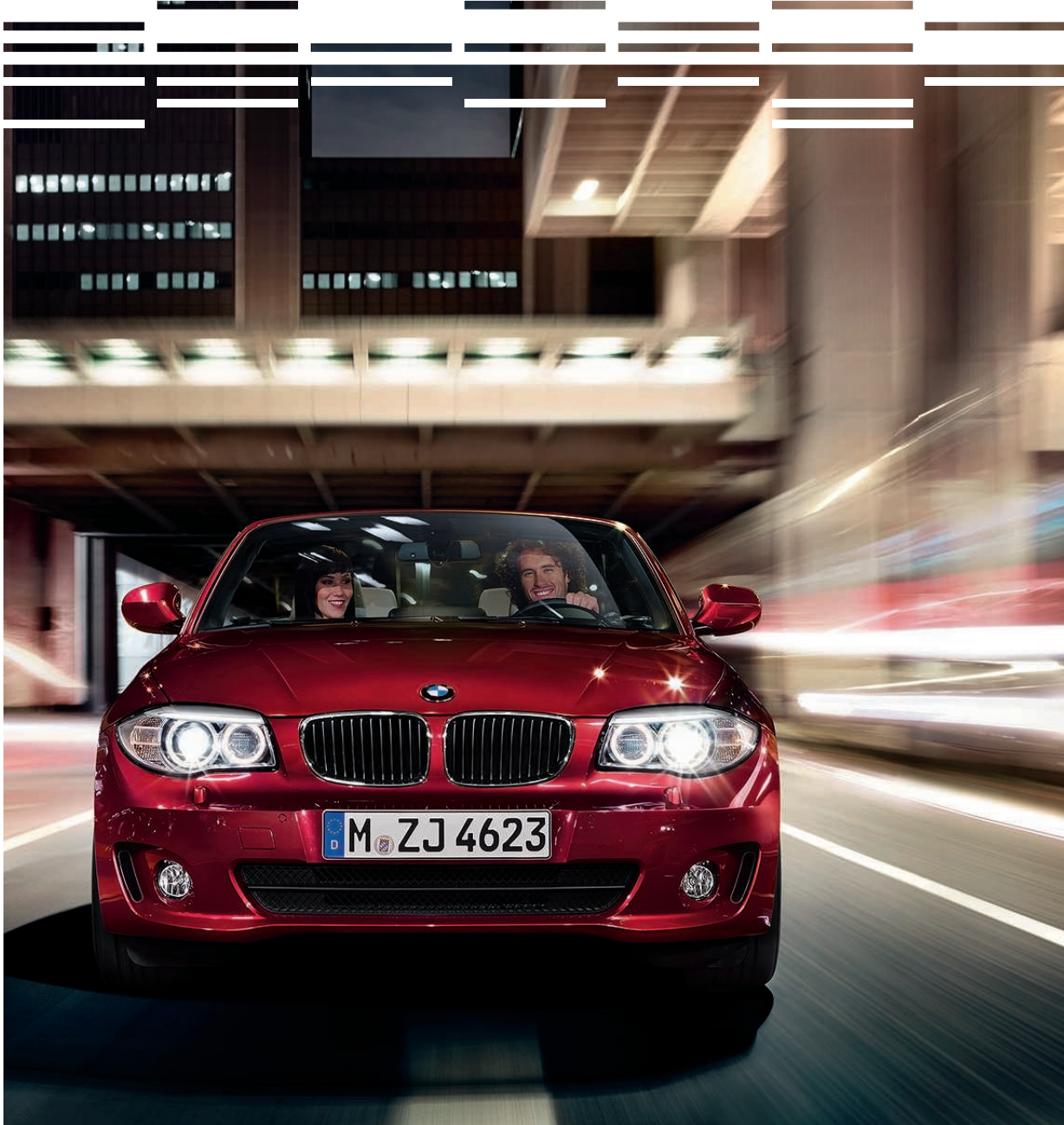
Dynamics, elegance, athleticism – all remarkable properties of the BMW 1 Series Convertible. Advanced fuel-saving and CO₂ reducing technologies can be added to that list, making this car a shining example of the BMW EfficientDynamics philosophy. One particular distinctive feature is the front apron air inlet for the unique Aero Curtain¹. Used for the first time in the BMW 1 Series Convertible, the Aero Curtain significantly

reduces air resistance, thus cutting down on fuel consumption and CO₂ emissions. The Aero Curtain also helps cool the brakes.

The BMW 1 Series Convertible needless to say has, as standard, even more BMW EfficientDynamics technologies: Brake Energy Regeneration, Optimum Shift Indicator and Electric Power Steering. There's even some satisfaction to be had in start-stop traffic, thanks to the efficiency-optimising Auto Start-Stop function. When the road does open up again, you can enjoy the sense of freedom to the full in the BMW 1 Series Convertible.

➔ www.bmw.co.uk/1SeriesConvertible

¹ Aero Curtain replaced by M Aerodynamic bodystyling on M Sport and Sport Plus Edition models.



SOAK UP MORE SUN AND LESS FUEL.

Less emissions, more driving pleasure.

The BMW 1 Series Convertible, for all its elegance, remains true to its sporty genes. Its engines make this point with total clarity. The four-cylinder TwinPower turbo also combines low fuel consumption with high performance. The 123d figures speak for themselves: 53.3mpg and 204hp (150kW).¹

As for the petrol engines, the top-line 135i with TwinPower turbo technology displays extremely impressive power delivery. Fuel efficiency, as you might expect, is a strong point. All in all, the BMW 1 Series Convertible powerplants illustrate why engines are described as the heart of the vehicle – and why your heart beats faster.

www.bmw.co.uk/1SeriesConvertible

¹ For information on fuel consumption and CO₂ emissions, see 64 | 65.





50:50 WEIGHT DISTRIBUTION, 100% DRIVING PLEASURE.

Classic BMW – perfectly balanced performance.

Agility, power and driving pleasure – rear-wheel drive marks out the BMW 1 Series Convertible as a thoroughbred BMW. The ideal 50:50 weight distribution and optional Active Steering (available on 125i and 135i models) combine to give outstanding road performance – for more joy on every curve.

Further technologies ensure the Convertible stays true to its name and, above all, true to the road. Convertible-specific, ultra-precise suspension tuning, an extremely rigid bodyshell and Dynamic Stability Control (DSC) guarantee optimum directional stability so you and your passengers arrive safely at your destination.



BMW ConnectedDrive
In touch with your world.

YOUR MOBILE SOCIAL NETWORK.

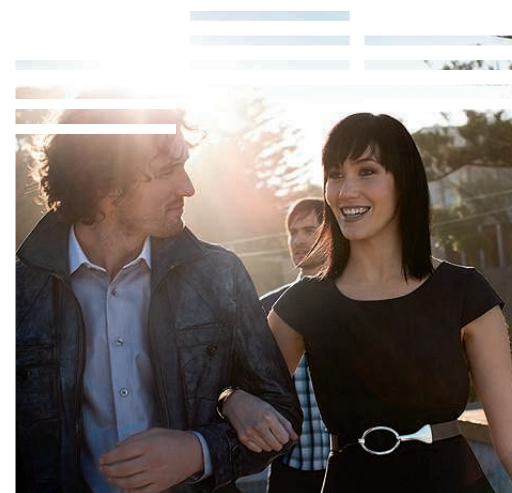
Get connected with
BMW ConnectedDrive.

You can also operate these functions via the optional iDrive system. By turning, pressing and manoeuvring the iDrive Controller, you are guided intuitively through all the Entertainment and Communications System functions. The high-definition 8.8" colour display shows the functions and takes you on a journey into the world of the internet.

➔ www.bmw.co.uk/1SeriesConvertible

The freedom you feel when driving a convertible is reflected in the seemingly unlimited possibilities of BMW ConnectedDrive. Have you discovered a great new place? Put it on Twitter. Want to get your friends together for an evening beach party? Arrange to meet them on Facebook. Read status updates wherever you are, post updates from the car, make new friends along the way – all this is possible via the new iPhone BMW Connected App.

BMW ConnectedDrive is the intelligent networking of driver, vehicle and the outside world. And it's particularly suitable for the Convertible driver. Not only can you plan the perfect route from home and send it to your BMW Professional Navigation System, you can also display the weather forecast and photos of your destination. And yet a drive can only be made perfect with the right music, which is where the USB audio interface for your MP3 player comes in. You can even display an album cover on the Control Display.



LOOK TO NEW HORIZONS.

Beautiful views at the touch of a button –
in just 22 seconds.





CURTAIN UP.

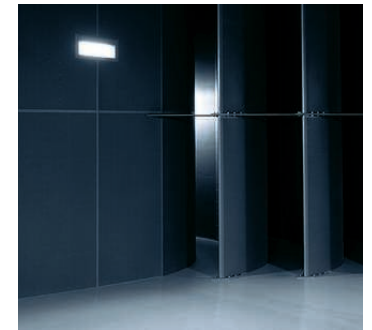
The Aero Curtain was developed for the BMW 1 Series Convertible and Coupé in the turbulent roar of a new high-tech wind tunnel. This new technology reduces air resistance at the wheel arches.

In the big wind tunnel at BMW Group's Aerodynamic Test Centre in Munich, reality is turned inside out. The car stays still while its environment moves around it. A giant rotor eight metres in diameter (pictured left) that consumes up to 4.4 megawatts of power (around 6,000hp) drives 18,000 cubic metres of air around an air flow ring. Before reaching the test track, the air is forced through a duct to accelerate its speed six-fold – up to 186mph. Road conditions are simulated using five thin steel rolling tracks. The wheels of the test vehicle are driven by four narrow belts, while the central ten-metre long belt under the car moves at exactly the same speed. This complex arrangement ensures that the air flow at the car's undercarriage, wheels and wheel arches is almost identical to that of a real driving situation. It's as if the road itself is being put to the test, in a testing bay 22m long, 16m wide and 13m high. A veritable palace of wind.

In practice, a 10% reduction in air resistance leads to a 2.5% reduction in fuel consumption. Although the body is already near perfect in terms of aerodynamics, the body is only actually responsible for 40% of the vehicle's total air resistance. 10% is caused by the cooling air for the engine, transmission and brakes, 20% results from the vehicle underbody, and the final 30% is produced at the wheels and the wheel arches – and in all these areas there is still room for improvement. So now the Aerodynamic Test Centre has come up with the Aero Curtain, premiering world-wide in the BMW 1 Series Convertible and Coupé. The Aero Curtain protects the front wheels from the headwind. Air taken in through vents in the front apron accelerates as the ducts conducting it narrow, and it is led to the wheel arch where it exits at high speed through narrow slits, covering the outer faces of the wheels like a curtain. This Aero Curtain acts

like an invisible wheel cover, imperceptible yet highly effective. With the new Aero Curtain, optimised cooling-air ducts and a smoothed-off undercarriage, the BMW 1 Series Convertible and Coupé now not only boast an excellent air resistance coefficient but also have reduced uplift. The end result is a reduction in fuel consumption – as well as better vehicle stability.

Behind the test area, high semi-circular shields steer the airstream in the opposite direction.



Left: aerodynamic tests in the huge test facility are controlled from the control unit of the wind tunnel.

Right: a smoke stream makes the airflow around the BMW 1 Series Convertible visible. The less turbulence that forms, the lower the air resistance.



RELAXING SURROUNDINGS ON THE MOVE.

Style that stirs all the senses.

Let the sun beat down on your face and the wind race through your hair. It's all pure joy in the BMW 1 Series Convertible. Elegant, sporty, modern – the interior combines all of these values to create a very special ambiance. Fine materials and craftsmanship make it better still.

The subtle elegance of the Oyster Boston leather for example, contrasts with the Light Walnut wood interior trim. The ergonomically designed seat upholstery remains pleasantly cool even on a hot summer day thanks to innovative SunReflective technology with reflective colour pigments in the leather. Climb in and experience an interior that could even be considered too beautiful to cover with a roof.

www.bmw.co.uk/1SeriesConvertible



BEAUTIFUL PLACES IN THE SUN BELONG TO YOU.

More rear space for more enjoyment.

Whether it's shopping, luggage or a beach mat and parasol, you'll find a place for everything in the BMW 1 Series Convertible. If you want even more versatility, there's also the optional through-loading system with transport bag. Your passengers will enjoy great comfort on two full-size rear seats even when the roof is up, so nothing can get in the way of a perfect day. When you're not enjoying the sun and open air, the high-quality soft-top available in Black, Beige or Anthracite Silver fleck is impressive in itself. When the mood takes you or the weather changes, a touch of a button is all it takes to fold down the roof of the BMW 1 Series Convertible.

What's more, the temperature remains as constant as the driving pleasure when you opt for automatic air conditioning with two-zone control and Convertible mode. When you open the roof, the climate automatically adjusts according to the surrounding temperature and driving speed. Just another example of the flexibility of a car with one core goal: the joy of driving a Convertible.



BMW EfficientDynamics

Less emissions. More driving pleasure.

BMW has long been at the forefront of the automotive industry in pursuing efficient driving technologies as part of our multi-award winning sustainability strategy. BMW EfficientDynamics represents a comprehensive package of innovative technologies for reducing fuel consumption and emissions – whilst simultaneously increasing driving dynamics. Through these innovations the BMW Group has been able to reduce the CO₂ emissions of its entire fleet by approximately 30% since 1995. Currently 33 models produce less than 140g of CO₂ per kilometre and more than two million BMW vehicles have already been equipped with EfficientDynamics technologies. BMW intends to achieve a further 25% reduction in CO₂ emissions by 2020. For the benefit of the environment and the enjoyment of the driver.



BMW EFFICIENT DYNAMICS TECHNOLOGY HIGHLIGHTS ON THE BMW 1 SERIES CONVERTIBLE.

Through tireless research, BMW is consistently producing innovations for the energy efficient mobility of the future. The BMW 1 Series Convertible like every BMW, incorporates many aspects of the multi-award-winning BMW EfficientDynamics technology as standard. These technologies interact perfectly to reduce fuel consumption and CO₂ emissions while maximising performance and dynamism. Less fuel, more driving pleasure – a paradox that BMW has resolved once and for all. For the benefit of the environment and the enjoyment of the driver.

THE BMW EFFICIENT DYNAMICS MEASURES IN THE BMW 1 SERIES CONVERTIBLE AT A GLANCE.

Aero Curtain.

Narrow openings on the left and right of the front apron direct in flowing air into two sealed channels. These run along the inside of the front apron to the wheel arches, where the air re-emerges and is steered at high speed through a narrow opening close to the external surface of the wheel. The escaping air streams down the sides of the front wheels, thus minimising air turbulence around the wheels and wheel arches, thereby further reducing fuel consumption.

Auto Start-Stop.

Switches the engine off without affecting other functions whenever the car comes to a rest, at traffic lights for example, saving fuel and reducing emissions. The engine is restarted automatically within a fraction of a second.

Optimum Shift Indicator.

Timely gear shifts are one of the most effective ways to save fuel. A small visual display on the vehicle's instrument panel shows the optimum gear for a more fuel-efficient driving style.

Electric Power Steering (EPS).

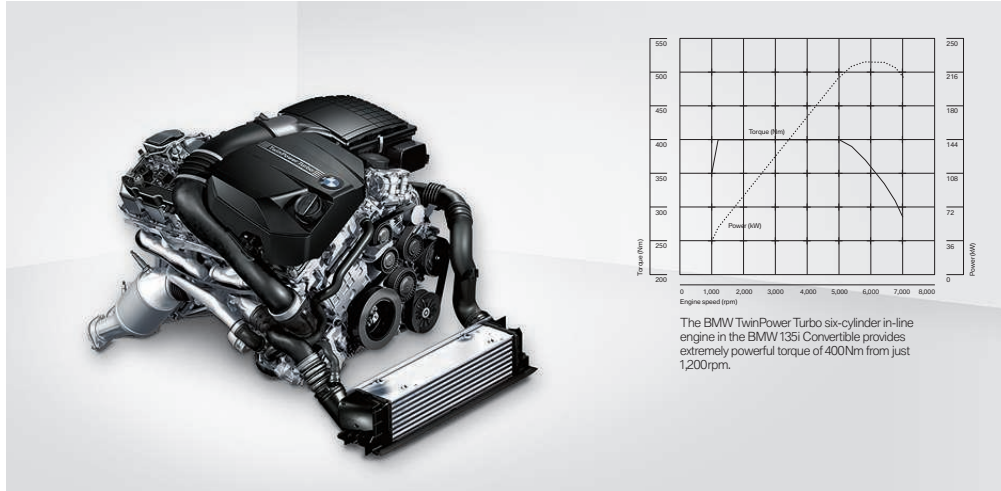
The electric power steering support only uses energy as needed to assist steering. When a steering wheel is static, for example when driving on a straight road, the electric motor is inactive.

Brake Energy Regeneration.

The alternator disengages automatically when the battery is fully charged, only re-engaging when the battery needs charging. This reduces the demands on the engine, reducing fuel consumption and emissions. In addition, when the car is braking or coasting, the system automatically engages the alternator to charge the battery, recycling energy that would otherwise be wasted.

EVERYTHING REVOLVES AROUND JOY. SEVERAL THOUSAND TIMES A MINUTE.

Petrol engines. Performance, power delivery and responsiveness are characteristic of every BMW engine. The same can be said for high efficiency. With this in mind, all the engines offered in the BMW 1 Series Convertible adhere to the BMW EfficientDynamics philosophy, combining impressive power with low fuel consumption and reduced CO₂ emissions. Whatever engine you choose, maximum driving pleasure and superb efficiency are guaranteed.



BMW 135i.

The TwinPower turbo six-cylinder in-line engine is the first in its class to combine a TwinScroll turbo charger with direct fuel injection and VALVETRONIC fully variable valve control. This innovative package reduces fuel consumption significantly and allows the engine to develop exceptional performance figures: 306hp (225kW)¹, 400Nm between 1,200 and 5,000rpm, acceleration from 0 to 62mph in 5.6 seconds and a top speed of 155mph. Despite these impressive figures, the 135i still achieves an average fuel consumption of 32.8mpg. It's a combination of pure emotion and economical enjoyment that makes the BMW 135i absolutely exceptional.

BMW 125i.

The six-cylinder in-line engine is truly impressive, with spontaneous power delivery and superb responsiveness. The fully variable inlet valve lift provided by the VALVETRONIC system optimises air supply to the engine, especially under partial load. The result is more power with lower fuel consumption. Brake Energy Regeneration assists the car to make more efficient use of its fuel. The BMW 125i has average fuel consumption of 34.0mpg. The powerful engine's 3.0 litre capacity develops peak torque of 270Nm at 2,500rpm, 218hp (160kW)¹ and accelerates the BMW from 0 to 62mph in 6.8 seconds plus has an impressive top speed of 148mph.

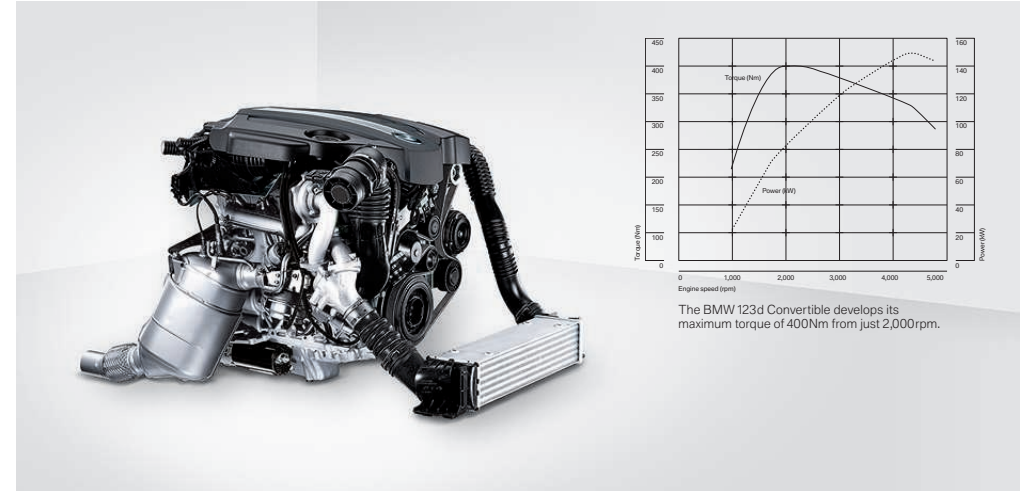
BMW 120i.

The four-cylinder in-line engine generates 170hp (125kW)¹ from its 2.0 litre capacity, taking it from a standstill to 62mph in 8.4 seconds and on to a top speed of 137mph. With direct fuel injection and a leaner fuel-air mixture in the combustion chambers, the engine is particularly economical, especially under partial load. Further BMW EfficientDynamics measures help the BMW 120i to reach an average fuel consumption figure of 41.5mpg.

BMW 118i.

The free-revving character of this four-cylinder in-line engine with direct fuel injection takes it to 6,000rpm and beyond. With 143hp (105kW)¹, it accelerates the BMW 118i from 0 to 62mph in 9.3 seconds. Highly efficient combustion and BMW EfficientDynamics measures ensure low average fuel consumption of just 43.5mpg.

Diesel engines. The three diesel engines available in the BMW 1 Series Convertible have impressive all-round capabilities. State-of-the-art common-rail technology combines running smoothness and efficiency with spontaneous acceleration and a superbly free-revving character. All the variants available are engineered in lightweight aluminium and, of course, come with a maintenance-free particle filter as standard.



BMW 123d.

The world's first TwinPower turbo four-cylinder diesel engine with Variable Twin-turbo combines two turbo chargers of different sizes. The first, smaller turbo provides instant responses at low revs, while the second, larger turbo gives a significant power increase as the revs climb. The all-aluminium crankcase also improves efficiency. The result is a unique relationship between performance and fuel consumption. In figures: 204hp (150kW)¹, 400Nm of torque, acceleration from 0 to 62mph in 7.5 seconds, a top speed of 143mph and average fuel consumption of just 53.3mpg.

BMW 120d.

As well as its smooth running character, the 2.0 litre four-cylinder diesel engine in the BMW 120d also offers high performance. With considerable torque of 350Nm at 1,750rpm and an output of 177hp (130kW)¹, it accelerates the car from 0 to 62mph in 8.1 seconds and delivers a top speed of 138mph. The constant high injection pressure and BMW EfficientDynamics measures ensure extremely efficient average fuel consumption of just 56.5mpg.

BMW 118d.

Flexible, powerful and smooth running, the BMW 118d develops 143hp (105kW)¹ and maximum torque of 300Nm. This enables the BMW to accelerate from 0 to 62mph in 9.5 seconds and achieve a top speed of 129mph. This master of efficiency has an average fuel consumption of just 58.9mpg.

¹ For information on fuel consumption and CO₂ emissions, please refer to pages 64 | 65.



“STAY COMPLETELY RELAXED,
EVEN ON CHALLENGING ROADS.”

Unadulterated joy comes when you feel completely safe and happy. In the BMW 1 Series Convertible, innovative chassis technology plays a large part in creating this feeling, providing everything you need to relax and enjoy even the most demanding roads.



THE BEST FOUNDATION FOR SUPERB DRIVING DYNAMICS: A SUPERB CHASSIS.

The most important requirement for a sporty driving experience is the best possible roadholding. In the BMW 1 Series Convertible, weight distribution of almost 50:50 across both axes, the neutral steering, high directional stability and excellent traction all play their part.



Lightweight chassis. The perfect match for the engine and transmission partnership in the BMW 1 Series Convertible. You'll feel it in the precision of the steering, the sporty handling, the exceptionally low vibration, the acoustic comfort and the feedback from the road. The front axle is a lightweight double-joint spring-strut construction, combining maximum rigidity with minimum weight. Together with the multi-arm rear axle and BMW's traditional rear-wheel drive set-up, this gives particularly agile handling. It is characterised by a tight turning circle, high directional stability, dynamic cornering and excellent traction in every situation.

50:50 weight distribution. Weight is distributed almost equally across the front and rear axes. This balance ensures the desired neutral steering. Perfectly equipped to push the boundaries together with the first class lightweight chassis and Dynamic Stability Control (DSC) is standard on the BMW 1 Series Convertible.

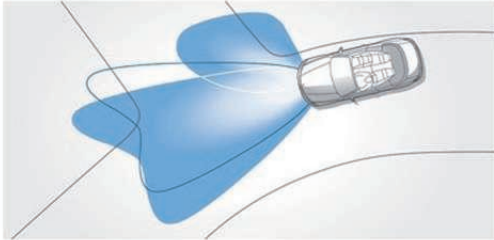
Bodyshell. Every component in the BMW 1 Series Convertible is designed to ensure maximum safety for the occupants. The particularly rigid passenger compartment is built to offer all on board the best possible protection, while the front and rear areas have highly effective crumple zones. In the event of a collision, the bodyshell converts a large part of the impact energy into deformation. This occurs at precisely specified points, thus minimising the consequences of an accident as far as possible.

Active Steering. This adjusts the steering ratio and power assist according to the speed of the car (optional on 125i and 135i). On one hand, this means greater comfort when parking and enhanced agility on winding roads. On the other, it brings greater safety at motorway speeds thanks to enhanced directional stability. For example, if the vehicle tends to swerve while braking on different surfaces, Active Steering automatically reads and corrects the situation with targeted countersteering. That means you can brake harder and the BMW 1 Series Convertible holds the road securely.

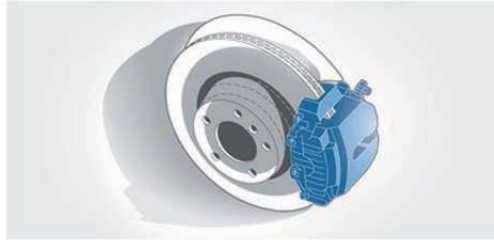
Seven-speed Double Clutch Transmission (DCT). In the BMW 135i Convertible, this optional feature ensures the most dynamically effective transfer of engine performance to the road. It uses two sub-transmissions divided into seven gears. This enables the driver to change gear without interrupting power delivery. The gearchange process takes just milliseconds and the continuous engine connection delivers breathtaking acceleration. In automatic mode, the rapid and precise selection of the most efficient gear also significantly reduces fuel consumption.

INNOVATIVE, INTELLIGENT – AND SAFE.

In the BMW 1 Series Convertible, state-of-the-art technologies can be relied on at all times. Which means you enjoy superior driving characteristics in any situation.



□ **Adaptive Headlights** with variable light distribution, includes turning lights, optimally illuminate corners as soon as the driver turns into them through electro-mechanical control of the pivoting headlamps.

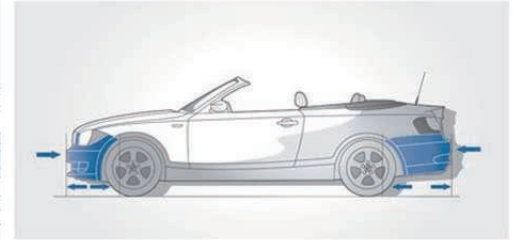


■ **Disc brakes** (special high performance brakes on the 135i) all round are generously sized and offer maximum safety and extreme ease of use. The brake system is also characterised by high stability without affecting its short braking distances.

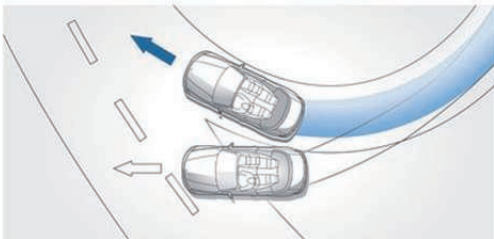


■ **BMW restraint system** for the driver and front passenger: a combination of a three-point seat belt, pyrotechnical belt latch tensioner and belt force limiter ensures the best possible restraint in a collision.

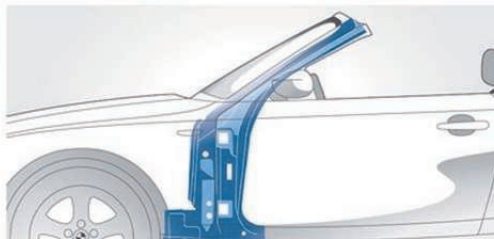
■ **Airbags:** in a BMW, all safety components are tailor-made for optimum coordination. Six airbags offer targeted protection: driver and passenger airbags, head airbags running from front to back and side airbags integrated into the front seat backrests.



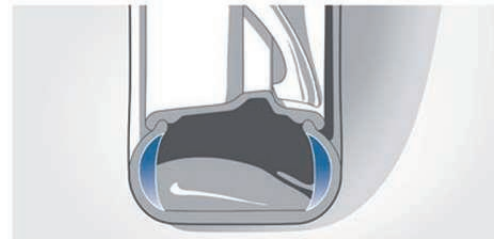
■ **Bumpers** absorb impacts of up to 2mph with no damage. Special deformation elements front and rear absorb impact forces up to 9mph.



■ **Dynamic Stability Control (DSC)**, includes Cornering Brake Control (CBC). DSC recognises the risk of swerving from the start and stabilises the car in milliseconds. Dynamic Traction Mode (DTC) is a sub-function that allows increased wheel slip to optimise propulsive power in certain situations and enable sportier driving.

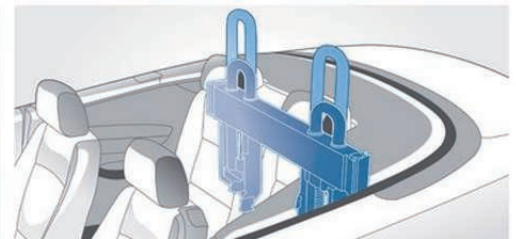


■ **Bodyshell rigidity and reinforced A-pillars.** The rigidity of the bodyshell structure is enhanced to withstand both torsion and bending with reinforcements on the undercarriage, in the sills and around the doors. Furthermore, the windscreen surround, which is strengthened in the A-pillar areas, and the cowl act as a rollover bar. All this means that the BMW 1 Series Convertible achieves stability figures equal to those of a fixed-roof car.



□ **Run-flat tyres:** reinforced side walls prevent the tyres from completely collapsing or loosening from the rim if the air pressure drops (standard with all 17" light alloy wheels and larger).

■ **Tyre Puncture Warning System (TPWS)** measures the rotational speed of each wheel to detect any changes in pressure, indicating a potential puncture. The driver is alerted through a Check/Control light.



■ **Rollover safety system** provides the greatest possible protection for the occupants in the event of an accident. If pre-defined limits for vehicle angle, longitudinal or transverse acceleration are exceeded, or if contact with the ground is lost, sensors trigger the rollover bars integrated behind the rear head-restraints, which raise up in a fraction of a second.



BMW ConnectedDrive In touch with your world.

Our world is becoming more connected every day. BMW drivers are used to the fact that their vehicle and their world are connected – that they can request information, communicate via telephone or email and always be up to date while they're on the go. The BMW ConnectedDrive concept encompasses all the services and innovative technologies that network BMW vehicles and their passengers with the world outside, including the traffic around.



The next generation of automotive technology.

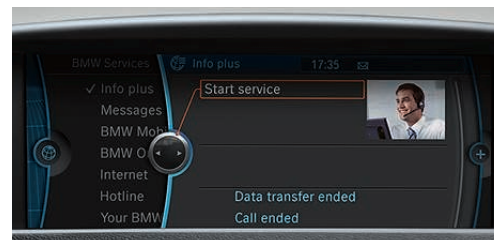
The BMW Vision ConnectedDrive was developed to demonstrate how BMW ConnectedDrive technologies will continue to pioneer automotive innovations in the future. The concept was consciously designed as a roadster to allow optimal insight into the display and operation of future BMW ConnectedDrive features. Such features include a three-dimensional Head-Up Display with Augmented Reality, vehicle-to-vehicle intelligent communication and a new Emotional Browser for sourcing relevant information on the surrounding environment. Three fibre optic light installations flow around the cabin to represent the key BMW ConnectedDrive areas of convenience, infotainment and safety. More information on this concept and future connected mobility projects can be found within our Future Lab.

www.bmw.com/futurelab



BMW CONNECTED DRIVE – FOR MORE CONVENIENCE, INFOTAINMENT AND SAFETY.

Convenience.



BMW Assist Information Plus. At the push of a button local information is available wherever you may be. The service connects you to a BMW operator who will be able to quickly access the information you need. You can request places of interest from hotels and restaurants, to museums or historical attractions. The information is then sent to your car and can then be used in your Navigation system to plan a route to your destination, or to make a call on your Bluetooth telephone. Information Plus is part of the optional BMW Assist package.



Comfort Access. This system allows you to unlock, lock and start your BMW without inserting or having to hold the key in your hand. When you have the remote control on your person, simply touch the door handle or boot lid and the BMW unlocks or locks as required by transmitting an identification signal to the car. Similarly, a touch of the Start-Stop button is all it takes to start the engine.

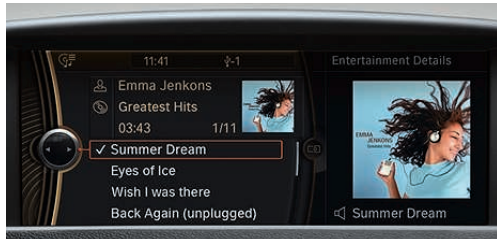
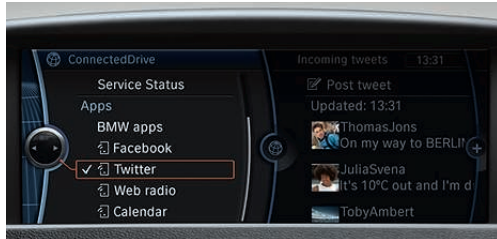


Park Distance Control (PDC). This allows for easy parking and manoeuvring in confined spaces. Acoustic signals and a visual indicator in the Control Display advise you when the front or rear of the vehicle is approaching an object. Distances are measured by ultrasound sensors in the bumpers.



Real Time Traffic Information (RTTI). Provides a precise account of current traffic situations in real time. The information is presented on the Navigation map by using a colour coding system indicating the flow of traffic. Road networks are divided into distances as short as 500m for superior accuracy and dependency. Information is automatically updated every 3 minutes allowing the driver to monitor whether the traffic situation is improving or worsening. The system also recommends for or against alternative routes based on the potential time saving benefits.

Infotainment.



Enhanced Bluetooth telephone functionality with telematics.

From now on, you can use the time you spend in your car even more effectively. Thanks to the optional Enhanced Bluetooth telephone functionality with telematics, a Navigation system and the intelligent integration of selected compatible business mobile phones¹, Office functions such as dates, tasks, contacts or SMS and email messages can be shown on the Control Display, via the Bluetooth connection, or they can be read aloud via the audio speakers, using the narrator function (if the vehicle is also equipped with Voice Control). Thanks to Bluetooth Audio Streaming², wireless playback of music files via selected compatible Bluetooth devices¹ is no problem either.

Mobile Application Preparation. With this optional feature, users can download the Mobile Application Preparation iPhone application free of charge. With this app you're no longer limited to listening to local radio. Using the iDrive system, you can select web radio stations from around the world. You can call up the latest status reports from your Facebook and Twitter accounts and view your iCalendar on the vehicle Control Display.

USB audio interface. With the USB audio interface and an original iPod USB cable, the album cover art for the track being played can be shown on the vehicle Control Display (the cover art display function is also available for other devices). The USB audio interface also allows the connectivity software in your BMW to be easily updated, so new compatible mobile phones and music players become fully operational after updating with a USB memory stick.³

BMW Assist Online. This online portal provides a range of current localised information inside your vehicle. The portal features daily news and sports headlines as well as weather forecasts. You can also access a Google search engine to locate points of interest and transfer details directly into the Navigation system. BMW Online is part of the optional BMW Assist package.

¹ See www.bmw.com/bluetooth for information on compatible devices.

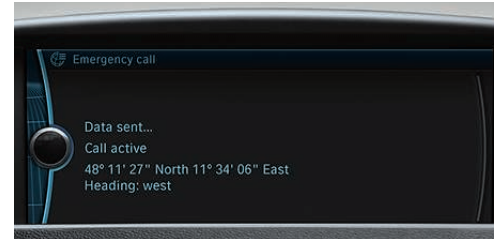
² Details of compatible phones enabled for Bluetooth Audio Streaming is available at www.bmw.com/bluetooth

³ For information on software updating see www.bmw.com/update

Safety.



High-beam Assistant. No unintentional dazzle – the optional High-beam Assistant uses an image sensor to recognise oncoming traffic and changing light conditions. When the system is active it automatically switches the High-beam on and off.



Emergency 999 SOS call. Known as BMW eCall, this service provides a direct link to the 999 Emergency Services. You can summon help manually by simply pressing the SOS emergency call button to arrange for assistance. Additionally, if your vehicle is involved in a more serious accident an automatic emergency call is made, providing extra reassurance that if you cannot call for help, the vehicle will on your behalf. With either the manual or the automatic Emergency SOS call, details of your vehicle and location will be sent directly to a 999 Emergency Service Centre, so that immediate action can be taken and assistance dispatched without delay. The Emergency 999 SOS call is part of the optional BMW Assist package.

Certain BMW ConnectedDrive features are optional dependant on the model and options chosen. Screens and services may differ in the UK. BMW Assist services require a connection to a UK mobile telephone network and are not available on the Isle of Man, Channel Islands or in the Republic of Ireland. Some services are available in other European countries; please refer to your local BMW Dealer for more information.

PURE ENJOYMENT.

The BMW 1 Series Convertible's quiet and secure roof make for a comfortable car all year round. Thanks to its rapid automatic action, you won't miss a single break in the clouds allowing you to enjoy every ray of sunshine.

OPEN TOP DRIVING IN ALL WEATHERS.

Convertible Mode of the BMW 1 Series Convertible's automatic air conditioning with two-zone control always guarantees a comfortable, feel-good atmosphere, even during open-top driving.



FREEDOM AT THE TOUCH OF A BUTTON.

Opening and closing the roof is fully automatic, even when the car is moving at speeds of up to 25mph.

ROOM FOR THE LUGGAGE.



2 trolley bags and a large travel bag. With the roof closed, luggage space is 305 litres.



3 medium-sized travel bags. The open soft top takes up little space in the boot. There is still 260 litres remaining.



3 friends with luggage and a picnic basket. Even with the roof down, it's no problem in the BMW 1 Series Convertible.



Convertibles were built for the sun. When you want to soak up the rays and enjoy the blue skies in the BMW 1 Series Convertible, you have to wait just 22 seconds. This is how long it takes for the soft-top to automatically retract and disappear into the boot, at the touch of a button. What's more, that still leaves a generous 260 litres of luggage space. When the roof is closed, this increases to 305 litres. You can even open or close the roof when the car is moving at up to 25mph. An optional wind deflector enhances comfort for the driver

and passenger from draughts and turbulence around the shoulders and neck. As an option, automatic air conditioning with two-zone control and Convertible mode raises the feel-good atmosphere of open-top driving even more. Its sensors not only register the temperature inside the car, but also that of the exterior, the intensity of the sun and speed of travel. The system then sets the car's temperature accordingly, even providing separate settings for the driver and passenger. The BMW 1 Series Convertible looks after the

wellbeing of its passengers at a standstill, too. The optional Boston leather seats are fitted with exclusive SunReflective Technology. Special colour pigments in the surface of the leather reflect infrared radiation from sunlight, so the seats absorb up to 20 degrees less heat. When the sun goes in, the multi-layered roof can be closed again in just 22 seconds. The soft-top, with an exceptional strength of 1,260g/m², protects the Convertible's occupants from noise, wind and cold with impressive efficiency. When it really cools down, the car's heated

and scratch-resistant rear screen provides clear rear visibility. The BMW 1 Series Convertible can also make a stunning impression with the roof closed: optional Anthracite Silver fleck soft-top has opalescent metallic fibres woven into the fabric giving a unique silvery look.

Exclusive Edition.

The more individual and stylish the appearance, the more attention it gets. It also immediately confirms your good taste – just like the new BMW 1 Series Convertible Exclusive Edition. The Chromeline exterior trim with its exclusive design elements combines elegantly with features such as the exterior mirror caps in Oxide Silver and the kidney grille with Chrome vertical slats. Then there's the distinctive exterior Mineral Grey metallic paint, along with five other vibrant colours. The optional 18" light alloy V-spoke 217 style wheels with mixed tyres and the Chrome exhaust tailpipe also make a striking impression. It all underscores the unmistakable character of the Exclusive Edition models. And you're sure to get plenty of admiring looks.



□ **Sport multi-function leather steering wheel** (diameter 369mm), Chrome trim, three spoke, including multi-function buttons for control of audio functions and optional telephone.



□ **17" light alloy Star-spoke style 371** with run-flat tyres, 7J x 17" with 205/50 R17 tyres (standard with Exclusive Edition models).

Special details can turn any space into an experience. In the new BMW 1 Series Convertible Exclusive Edition, these details are everywhere. Take, for instance, the Sport leather steering wheel or the Chrome door sill finishers with the BMW Edition designation. There are also high-grade materials such as the new Boston leather upholstery with SunReflective technology that keeps the seats pleasantly cool, even in direct sunlight and is available in Pearl Grey with Grey stitching, Black with White stitching or Terra. Floor mats with matching piping, handbrake lever grip with Chrome finisher and optional interior trim in Anthracite Finition wood complete a decidedly exclusive picture.



Sport Plus Edition.

Life in the city goes at a fast pace. Speed you can always keep up with in the new BMW 1 Series Convertible Sport Plus Edition – and with as much dynamism as you wish. Even by itself, the combination of the exclusive Carbon Black metallic exterior, or any of five other colour choices and the standard 18" M light alloy Double-spoke style 313 M wheels with mixed tyres is enough to make a powerful impression. Together with Black exterior mirror caps and Chrome kidney grille with Black vertical slats, which enhance the athletic appearance. Darkline rear lights and the Chrome exhaust tailpipes further underline the sporty character.



□ **18" M light alloy 313 M style** with mixed run-flat tyres, front 7.5J x 18 with 215/40 R18 tyres, rear 8.5J x 18 with 245/35 R18 tyres.

Every metropolis exerts a powerful force of attraction.

The BMW 1 Series Convertible Sport Plus perfectly fits the picture. This car demonstrates its individual expressiveness through a host of sporting interior features, including the M Sport multi-function leather steering wheel and Glacier Silver Aluminium interior trim, which combines perfectly with the Black Boston leather upholstery. The door sill finishers with BMW Edition designation further accentuate the exceptional overall standard. Put together, these details make one thing immediately clear: this model sets the standard when it comes to sporting style.¹

¹ Please note: Stainless steel foot pedals not relevant for the UK.

Strong Expression. Exclusively for the BMW 135i M Sport.

From the very first sight, the powerful looking BMW 135i M Sport Convertible clearly shows its capabilities.

It looks athletic from bonnet to boot: beneath the characteristic double kidney grille in Chrome, the central air intake draws the eye. The two air intakes at the sides are used to cool the brakes and give the front end a particularly sporty look. The two wheel arches emphasise the width of the car's front profile. The modified M Aerodynamic package also includes side sills and an aggressively styled rear apron with integrated diffuser. Standard equipment includes the M Sport chassis with specific adjustment. In addition, the 135i M Sport has 18" light alloy V-spoke style 261 M wheels with mixed tyres.



□ M Sport multi-function leather steering wheel with optional uni-directional gear shift paddles



■ Sports Seats for Driver and Passenger: the higher seat sides and the electric backrest width adjustment provide optimum support in every driving situation. There is also manual adjustment for seat height, backrest angle, seat length and seat angle, as well as thigh support (shown here in Black Boston leather).



□ 4DH Alpine White interior trim includes the decorative trim on the instrument panel, the interior door pull handles, centre console and the trim on the Sport steering wheel. Other areas, such as the door opening handles, Auto Start-Stop button and the Speed dial surrounds are in Chrome Pearl gloss.



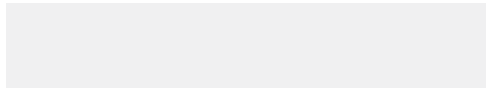
■ 18" light alloy Double-spoke style 261 M wheels are standard on 125i and 135i M Sport.



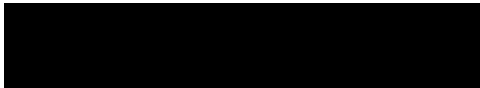
■ Twin Tailpipes: the Dark Chrome twin tailpipes are standard on the 135i M Sport.



Exterior colours.



300 Alpine White, non-metallic



668 Jet Black, non-metallic¹



B39 Mineral Grey, metallic²



416 Carbon Black, metallic³



354 Titanium Silver, metallic



A72 Cashmere Silver, metallic²



475 Black Sapphire, metallic¹



A52 Space Grey, metallic



896 Bluewater, metallic¹



A76 Deep Sea Blue, metallic¹



381 Le Mans Blue, metallic³

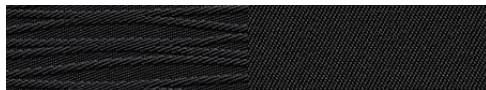


A82 Vermilion Red, metallic⁴

Colours and materials available for the BMW 1 Series Convertible are shown on the following pages. Use them to identify your favourite colours, or compare various combinations. These colour samples are intended as an initial guide, however experience has shown that printed versions of paint and upholstery colours

cannot in all cases faithfully reproduce the colour appearance of the originals. We therefore recommend that you consult your local BMW Dealer on your preferred colour choices, who will be happy to show you samples and assist you with special requests.

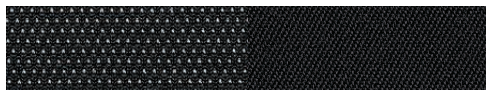
Upholstery colours.



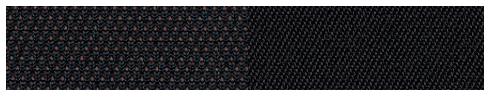
■ EAAT Anthracite, Electra cloth⁵



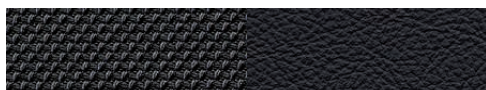
□ GCSW Black, Flashpoint cloth/Sensatec⁶



□ AUAT Anthracite, Network cloth⁵



□ AUDR Magma Brown, Network cloth⁵



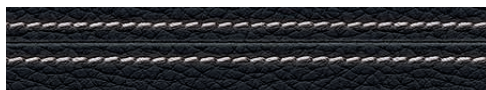
□ FHAT Anthracite/Black, Pearpoint cloth/leather⁵



□ LWSW Black, Boston leather⁷



□ LWNH Pearl Grey with Grey stitching, Boston leather⁸



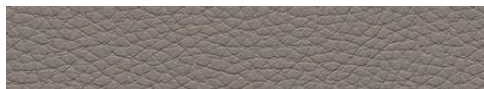
□ LWNM Black with White stitching, Boston leather⁹



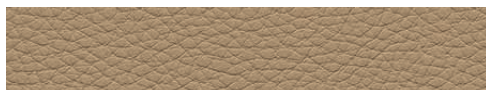
□ LWNL Black with Blue stitching, Boston leather⁹



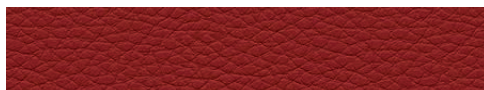
□ LWCX Oyster, Boston leather⁴



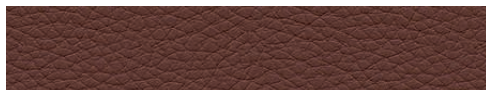
□ LWA5 Beige, Boston leather⁴



□ LWB4 Savanna Beige, Boston leather¹⁰



□ LWD1 Coral Red, Boston leather¹⁰



□ LWB8 Terra, Boston Leather⁷

- ¹ Only ES / SE / 135i M Sport models.
² Only ES / Exclusive Edition / SE / 135i M Sport models.
³ Only M Sport / Sport Plus Edition models.
⁴ Only ES / SE / M Sport / Sport Plus Edition models.
⁵ Only ES / SE models.
⁶ Only M Sport models.
⁷ Only ES / Exclusive Edition / SE / M Sport models.
⁸ Only Exclusive Edition models.
⁹ Only Sport Plus Edition models.
¹⁰ Only ES / SE / M Sport models.

Interior colours.



■ Black



■ Beige

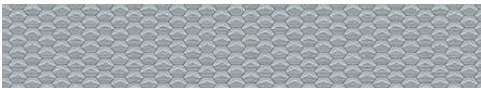
Interior trims.



■ Satin Silver, matt¹



□ 4DH Alpine White²



■ Aluminium Glacier Silver³



□ 4CE FINELINE Anthracite wood

Roof colours.



■ Black



□ 3YA Anthracite Silver fleck



□ 394 Beige



□ 4AT Black, High-gloss²



□ 4B3 Brushed Aluminium with accent line



□ 4A3 Light Walnut wood³

¹ Only ES / SE models.

² Only ES / Exclusive Edition / SE models.

³ Only ES / SE / M Sport models.

⁴ Only M Sport / Sport Plus Edition models.

⁵ Pearpoint upholstery includes parts of the inner side, supports of the seat surfaces, seatbacks and headrests in leather, centre part of the seat surfaces and seatbacks and side section of the headrest in cloth.

⁶ Boston leather includes seat surfaces, headrests for front and rear seats.

⁷ Also available for M Sport models in conjunction with Sport seats

⁸ Only ES / SE / 135i M Sport models.

⁹ Only ES / Exclusive Edition / SE / 135i M Sport models.

¹⁰ Only ES / SE / M Sport / Sport Plus Edition models.

Combinations.

	Upholstery colour																		
	BMW 1 Series Convertible											Exclusive Edition	Sport Plus Edition	M Sport					
	Electra cloth ¹	Network cloth ¹		Pearl-point cloth/leather upholstery ^{1,5}	Boston leather ^{4,7}										Boston leather ²	Boston leather ⁶	Flash-point cloth/Sensatec		
Interior colours																			
Standard seats	•	•	•	—	•	•	•	•	•	•	•	•	•	•	•	•	•	—	—
Sport seats	—	•	—	•	•	•	•	•	•	•	•	•	•	•	•	•	•	•	•
Upholstery colour	Anthraxite	Anthraxite	Magma Brown	Anthraxite	Black	Oyster	Beige	Savanna Beige	Coral Red	Terra	Pearl Grey/Crey	Black/White	Black/Blue	Black					
Interior colour	Black	Black	Black	Black	Black	Black	Beige	Black	Black	Black	Black	Black	Black	Black					
Exterior colours																			
Alpine White non-metallic	•	•	•	•	•	•	•	•	•	•	•	•	•	•	•	•	•	•	
Jet Black non-metallic ³	•	•	•	•	•	•	•	•	•	•	•	—	—	—	—	•	•	•	
Mineral Grey metallic ²	•	•	•	•	•	•	•	•	•	•	•	•	•	•	•	•	•	•	
Carbon Black metallic ⁴	—	—	—	—	—	—	—	—	—	—	—	—	—	—	•	•	•	•	
Titanium Silver metallic	•	•	•	•	•	•	•	•	•	•	•	•	•	•	•	•	•	•	
Cashmere Silver metallic ²	•	•	•	•	•	•	•	•	•	•	•	•	•	•	—	—	—	—	
Black Sapphire metallic ³	•	•	•	•	•	•	•	•	•	•	•	—	—	—	—	•	•	•	
Space Grey metallic	•	•	•	•	•	•	•	•	•	•	•	•	•	•	•	•	•	•	
Bluewater metallic ⁵	•	•	•	•	•	•	•	•	•	•	•	—	—	—	—	•	•	•	
Deep Sea Blue metallic ²	•	•	•	•	•	•	•	•	•	•	•	—	—	—	—	•	•	•	
Le Mans Blue metallic ⁴	—	—	—	—	—	—	—	—	—	—	—	—	—	—	•	•	•	•	
Vermillion Red metallic ²	•	•	•	•	•	•	•	•	•	•	•	—	—	—	•	•	•	•	
Interior trims																			
Satin Silver, matt ¹	•	•	•	•	•	•	•	•	•	•	•	—	—	—	—	—	—	—	
Black, High-gloss ²	•	•	•	•	•	•	•	•	•	•	•	•	•	•	•	•	•	•	
Alpine White ²	•	•	•	•	•	•	•	•	•	•	•	—	—	—	—	—	—	—	
Brushed Aluminium with accent line	•	•	•	•	•	•	•	•	•	•	•	•	•	•	•	•	•	•	
Aluminium Glacier Silver ⁴	—	—	—	—	—	—	—	—	—	—	—	—	—	—	•	•	•	•	
Light Walnut wood ³	•	•	•	•	•	•	•	•	•	•	•	•	•	•	—	—	—	—	
Fineline Anthracite wood	•	•	•	•	•	•	•	•	•	•	•	•	•	•	•	•	•	•	

• Available — Not available

Please note that even normal long or short-term use can lead to unrecoverable upholstery damage. This can be caused in particular by non-colourfast clothing.

© BMW AG, Munich/Germany. Not to be reproduced wholly or in part without written permission of BMW AG, Munich.

Equipment packages.

7KA Media Package – BMW Business Advanced.

Offering features such as the BMW Business Advanced navigation system, Enhanced Bluetooth telephone functionality with telematics and USB audio interface, this package conveniently allows you to stay in touch while on the road and also ensures you reach your destination safely and on time.



606 Navigation system – BMW Business Advanced with 6.5" high-resolution flat screen colour display including BMW Professional radio with single CD player. The navigation display can be either map and/or arrow view with further options such as journey planning with multiple stop-off locations, dynamic route planning, and night mode.

7KB Media Package – BMW Professional Multimedia.

Including BMW Professional Multimedia navigation system with 3D route map and dynamic route planning to ensure you reach your destination with ease where Enhanced Bluetooth telephone functionality with telematics and USB audio interface provides convenient connectivity while on the move.



609 Navigation system – BMW Professional Multimedia including 8.8" high-resolution flat screen colour display and BMW Professional radio with single DVD player. With split screen functionality that enables the navigation and other functions to be displayed simultaneously. Detailed navigation map to enhance route planning, RTTI (Real Time Traffic Information), journey planning with multiple locations. A built-in hard disc drive allows for improved speed of operation and data storage.

□ 7H8 Enhanced Bluetooth telephone functionality with USB audio interface.

Combining Enhanced Bluetooth telephone functionality and USB audio interface making the time spent in your car more effective providing connection to compatible phones, convenient recharging and a USB input for your personal media device.



633 Enhanced Bluetooth telephone functionality with telematics.

Preparation for a compatible mobile phone with Bluetooth interface, with the addition of a pre-fitted telematics SIM card for the use of BMW ConnectedDrive services. See www.bmw.com/bluetooth for a list of compatible mobile telephones.

6FL USB audio interface, allows you to connect a USB stick. Details of music stored on the stick are shown on the radio display or the navigation screen and is operated by using the iDrive controller or via the buttons on the optional multi-functional steering wheel.



□ 7H9 Bluetooth hands-free facility with USB audio interface.

This package allows connection of compatible mobile phones with Bluetooth interface. In addition USB storage devices can be connected with playback details shown on the radio display. (Standard with Edition models.)

6FL USB audio interface, allows you to connect a USB stick. Details of music stored on the stick are shown on the radio display or the navigation screen and is operated by using the iDrive controller or via the buttons on the optional multi-functional steering wheel.

6NN Bluetooth hands-free facility, for wirelessly connecting Bluetooth compatible mobile phones to the On-Board Computer.

Standard / Optional equipment.



□ **522 Xenon headlights**, including four Corona rings and automatic range control, provide better illumination of the road ahead at night or in poor visibility (includes option 502, Headlight wash).

□ **524 Adaptive Headlights**, only in conjunction with Xenon headlights and Rain sensor with automatic headlight activation, including Adaptive Headlights: optimal and prompt illumination of bends through electromechanical control of the moveable lamps as soon as the driver turns the steering wheel.



□ **Rear lights with LED light bars**: two individual high-performance LED lights emphasise the sporty character of the rear. In conjunction with Xenon headlights.

■ **Aero Curtain**: narrow openings on the left and right of the front apron direct inflowing air into two sealed channels. These lead to the wheel arches, where the air is released at high speed down the sides of the front wheels. This minimises air turbulence around the wheels and wheel arches, thereby further reducing fuel consumption (replaced by M Aerodynamic bodystyling on M Sport and Sport Plus Edition models).



■ **Halogen lights for high and low beam** with freeform technology dual round headlamps.



■ **Rear lights with LED elements** ensure the car is clearly visible at night or in bad weather.



□ **521 Rain sensor with automatic headlight activation**, once activated, automatically switches on the windscreen wipers when it rains, adjusting the wiper frequency with rainfall intensity. The automatic headlight control will switch on the low-beam headlights as light level drops (standard on 125i and 135i M Sport and Sport Plus Edition models).



□ **563 Extended lighting**, including front interior reading lights, lighting for vanity mirrors in sun visors for driver and passenger, front footwell lighting and puddle lights in exterior door handles (standard on SE, M Sport and Sport Plus Edition models).

¹ Aero Curtain replaced by M Aerodynamic bodystyling on M Sport and Sport Plus Edition models.



□ **387 Wind deflector** allows for comfortable top-down driving without draughts and turbulence around the shoulders and neck. The wind protector is easy to use and can be folded and stowed away in the luggage compartment to save space.



■ **Rear windscreen** is heated, made of scratch and dirt-resistant glass and guarantees a clear view at all times.



■ **Soft-top roof** features multi-layered lining and integrates harmoniously into the shape of the convertible (shown here in optional Anthracite Silver fleck). The cabin is insulated to impressive effect against noise and extreme temperatures.



□ **346 Exterior trim, Chromeline** includes Chrome trim for the A-pillar, window recess finishers, folding top cover and belt guide point. The door sills, the mirror triangle and mirror frame are finished in Black, High-gloss. (Standard on Exclusive Edition models).



□ **760 Exterior trim, High-gloss Shadowline** includes the surrounds of the A-pillar, window recess finishers and folding top cover, as well as the mirror triangle and mirror frame finished in Black, High-gloss (standard on M Sport and Sport Plus Edition models).



■ **Exterior mirrors**, in body colour, electrically adjustable and aspheric on the driver's side. Heated mirrors are standard for 120i/d SE and above.

Standard / Optional equipment.



□ **2FA 18" light alloy V-spoke style 372** with mixed run-flat tyres, 7.5J x 18" with 215/40 R18 tyres at the front, 8.5J x 18" with 245/35 R18 tyres at the rear.



■ **2KH 16" light alloy V-spoke style 229¹**, 6.5J x 16" with 195/55 R16 tyres (standard with ES models), also available as a complete winter wheel set from the Genuine BMW Accessories range.



□ **2BT 16" light alloy Double-spoke style 222¹**, 7J x 16" with 205/55 R16 tyres (standard with SE models).



□ **2K9 16" light alloy V-spoke style 360¹**, 7J x 16" with 205/55 R16 tyres.



□ **2AP 17" light alloy Streamline-spoke style 370** with mixed run-flat tyres, 7J x 17" with 205/50 R17 tyres at the front, 7.5J x 17" with 225/45 R17 tyres at the rear.



□ **2R2 17" light alloy Star-spoke style 256** with run-flat tyres, 7J x 17" with 205/50 R17 tyres, available as a complete winter wheel-and-tyre set in the Genuine BMW Accessories range.



□ **2DM 17" light alloy Star-spoke style 371** with run-flat tyres, 7J x 17" with 205/50 R17 tyres (standard with Exclusive Edition models).



□ **2SL 17" light alloy Star-spoke style 262** with mixed run-flat tyres, 7J x 17" with 205/50 R17 tyres at the front, 7.5J x 17" with 225/45 R17 tyres at the rear.



□ **2SM 18" light alloy Star-spoke style 264** with mixed run-flat tyres, 7.5J x 18" with 215/40 R18 tyres at the front, 8.5J x 18" with 245/35 R18 tyres at the rear.

¹ Including BMW Mobility tyre sealing system or optional run-flat tyres.



□ **2TC Seven-speed Double Clutch Transmission (DCT)** for exceptionally fast gearshifts without power loss, ensuring top dynamic performance and optimised fuel consumption (only available for 135i M Sport and Sport Plus, includes steering wheel mounted gearshift paddles).



■ **Six-speed manual transmission** for a particularly sporty drive. Immensely smooth, with perfect ratios and precise, short-throw gearshifts. The addition of a sixth gear means that the gear ratios are more closely spaced, enabling you to make even greater use of the engine's power.



□ **205 Automatic transmission** with Adaptive Transmission Control (AGS) and Steptronic. This six-speed transmission performs very fast, flawless gearshifts – for maximum dynamic performance. Not available for 135i M Sport and Sport Plus (includes steering wheel mounted gearshift paddles on all models except 118i/d). Shown here: Smoker's package deletion with open storage compartment.



■ **Sport leather steering wheel** (diameter 369mm), Chrome trim, three spokes.



□ **2XA Sport multi-function leather steering wheel with gear shift paddles** (diameter 369mm), Chrome trim, three spoke, with multi-function capability for remote control of radio and optional telephone. (Available for Exclusive, SE, 120i/d and above).
□ **248 Steering wheel heating** for Sport multi-function leather steering wheel.



□ **7XA M Sport leather steering wheel with gear shift paddles** (diameter 369mm), three spoke, optionally with multi-function buttons for radio and optional telephone. An M gear lever knob with the M emblem is included should you opt for the manual transmission. (Available for 120i/d M Sport, Sport Plus models and above).

Standard / Optional equipment.



■ **Auto Start-Stop** on the Info Display indicates when the engine has been switched off by the Auto Start-Stop function (e.g. at traffic lights or in a jam). The engine is re-started automatically when you next depress the clutch, and the signal is turned off (for the 120i, 118d, 120d and 123d in conjunction with a six-speed manual transmission).



■ **Optimum Shift Indicator** for models with six-speed manual transmission. The display indicates when you could be driving more economically in a different gear. The system recommends when to shift up or down and adapts its recommendations to your driving style.



□ **493 Extended storage** includes cupholder, storage nets on the front seat backrests, 12V sockets, two folding lashing eyes in the luggage compartment, storage nets on the right, two tensioning straps on the luggage compartment floor and a storage compartment on the instrument panel (one cupholder in conjunction with Navigation system).



□ **540 Cruise control** stores and maintains a desired speed above approximately 20mph activated using the left-hand steering column stalk. After accelerating, the vehicle automatically returns to the previously stored speed. Braking cancels the setting.



■ **Instrument cluster** with analogue instruments and red backlighting: speedometer, LC display for mileage counter, trip counter and On-Board Computer, plus rev counter with integrated fuel gauge (image shown 135i M Sport).



□ **507/508 Park Distance Control¹ (PDC)**, front and rear or rear only, facilitates parking and manoeuvring in confined spaces, an acoustic warning signal indicates the proximity of objects to the front/rear of the car. With navigation system and with visible display on the monitor (PDC, rear standard on SE, M Sport and Sport Plus Edition models).



□ **606 Navigation system – BMW Business Advanced²** includes a 6.5" fixed colour monitor with map and arrow display plus dynamic route planning. A CD drive and eight programmable favourite buttons are included, along with the iDrive controller and shortcut buttons.



□ **609 Navigation system – BMW Professional Multimedia³** includes a high-resolution 8.8" Control Display that can be split into main window and assistant window. Map and arrow display plus dynamic route planning and Real Time Traffic Information (RTTI) for traffic flow information are features of this navigation system. The iDrive Controller offers intuitive operation with the use of shortcut buttons, as well as eight programmable favourite buttons for iDrive functions. A built in hard disc drive allows for improved speed of operation and data storage, with a multimedia capacity of 12GB storage for audio files.

¹ Shown here on the 8.8" colour display of the Professional Multimedia navigation system.

² For information on compatible devices see www.bmw.com/bluetooth

³ Available with Equipment package see pages 48 | 49 for details.



■ **Auxiliary input point** for auxiliary playing devices, such as an MP3 player.
 □ **6FL USB audio interface²** allows you to connect a USB stick. Details of music stored on the stick are shown on the radio display or the navigation screen. You can operate it using the buttons on the multi-function steering wheel or with the iDrive Controller. (Standard with Exclusive and Sport Plus Edition models).



■ **BMW Business radio** with FM and MW, six station buttons, automatic volume adjustment, CD player, MP3 decoder and five loudspeakers.
 □ **663 BMW Professional radio** features as Radio Business CD, six loudspeakers and optional connection for a CD changer.



□ **688 Loudspeaker system – harman/kardon** with powerful amplifier, equalizer, and ten loudspeakers for superb sound. Surround sound function enables simulation of various acoustic environments.



□ **614 Internet** displays websites in the high resolution vehicle Control Display with the iDrive controller doubling as a mouse for the on-screen navigation. The connection operates via the built-in vehicle SIM card and thus no external mobile device is required for operation.



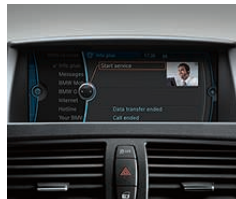
■ **Soft-top roof control switch** for fully automatic opening and closing of the roof. The opening operation can be activated at speeds of up to 25mph.



□ **633 Enhanced Bluetooth telephone functionality with telematics^{2,3}** for BMW Assist (not available on ES models).
 □ **6NN Bluetooth hands-free facility^{2,3}** enabling wireless connection for compatible phones. (Standard with Exclusive and Sport Plus Edition models).



□ **672 CD changer** located in the left-hand side of the luggage compartment.



□ **612 BMW Assist³** helps the driver by making automatic and manual emergency calls and giving precise, to-the-metre position data. Also features Traffic Info Plus, Google Send to Car and a personal information service.



□ **534 Air conditioning, automatic with two-zone control** (shown here), with AAR, microfilter, fogging and solar sensor and residual heat button. Separate temperature control for left and right side (standard on SE, M Sport and Sport Plus Edition models).

Standard / Optional equipment.



481 Sport seats for driver and front passenger with electric adjustment for side bolsters plus manual adjustment of fore-and-aft position, seat height, backrest angle, seat angle and thigh support (standard on M Sport and Sport Plus Edition models).



■ **Rear seats**, ergonomically formed and each with three-point seat belt as standard.



■ **Standard seats** with manual adjustment, including seat height adjustment for driver's seat and passenger's seat. Available in Electra cloth, Network cloth, and Boston leather as shown.



494 Seat heating, front for driver and front passenger, seat surface and backrest, including side supports, are rapidly heated to add comfort in colder months. The heated seats can be adjusted by a three stage toggle switch.



488 Lumbar support for driver and front passenger seats, electrically adjustable in height and depth, for an ergonomically perfect seat position and support of the back muscles.



459 Seat adjustment – front, electric with driver memory for driver and front passenger with seat height, backrest, length and angle adjustment, includes memory function for driver's seat and exterior mirror (with automatic parking function).



□ **4UT Through-loading storage bag** offers plenty of space for the optimal use of the luggage compartment. Bulkier items can be stowed away with ease. The removable section of the backrest can be laid down and will remain securely in place.



□ **Storage bag** allows for clean and safe transport, for example, of two snowboards. When the bag is not required, it can be stowed out of sight to save space (included in the optional through-loading storage bag).



□ **431 Rear-view mirror, automatically dimming** with automatic anti-dazzle function and large surface area, the dazzle from following vehicles is automatically reduced when the amount of incident light exceeds a defined limit (standard on SE, M Sport and Sport Plus Edition models).



■ **Luggage compartment** with great utility and volumes from 260 litres (roof open) to 305 litres (roof closed). Includes a storage area on the right with net, four securing rings in luggage compartment floor and another storage compartment with a sliding net on the rear seat backrest (not available in conjunction with optional Through-loading storage bag).



■ **Personal Profile:** The Personal Profile* stores your personal preferences for settings such as temperature and air distribution settings of the Automatic Air conditioning, the position of the exterior mirrors, and the volume and sound settings of the radio. These settings are then activated when your key is used to unlock the central locking.



□ **BMW Service Inclusive.** Service costs are another area where your local BMW Dealer can offer you an intelligent solution. BMW Service Inclusive covers all your vehicle's servicing requirements for a specified period. Terms and conditions apply, find out more online at

➔ www.bmw.co.uk/serviceinclusive

* All features dependant on standard equipment.
Please consult your local BMW Dealer for further details.

M Sport models. An expression of superior athleticism.

□ If you opt for an M Sport model, you will be sure to turn heads with the exclusive Le Mans Blue metallic exterior paint (optional). The athletic front and rear aprons, dynamic side sills and large air intakes also underline the impressive design.



Alongside the Le Mans Blue metallic paint finish shown here, the M Sport models are available in a choice of five other enticing colours. Striking down to the last detail: all M Sport models come with Chrome tailpipes (twin Dark Chrome on the 135i M Sport).

Sports seats for driver and passenger shown here in Black Flashpoint cloth/Sensatec upholstery provide perfect support for every bend.



The **M Sport leather steering wheel** has excellent grip and boasts several multi-function buttons, which can be used to operate the radio, CD player and telephone (optional). Exclusive to the M Sport and Sport Plus Edition models. Aluminium Glacier Silver interior trim, M gear lever knob with the M emblem (only with manual transmission).¹



Chrome M door sill finishers with M designation provides a stylish welcome. The M Sport suspension, lowered by 15mm, ensures an exceptionally dynamic driving experience. (Standard suspension also available).



■ **17" light alloy Double-spoke 207 M** with mixed run-flat tyres, front 7J x 17" with 205/50 R17 tyres, rear 7.5J x 17" with 225/45 R17 tyres. (Standard with 118i/d, 120i/d and 123d M Sport models).



□ **18" light alloy Double-spoke 261 M** with mixed run-flat tyres, front 7.5J x 18" with 215/40 R18 tyres, rear 8.5J x 18" with 245/35 R18 tyres (standard with 125i and 135i M Sport models).

¹ Please note: Stainless steel footrest not relevant for the UK.

Genuine BMW Accessories.



Tow hitch-mounted, lockable bicycle holder, 105mm long Sport radio aerial, 18" light alloy Star-spoke style 311, Chrome.



BMW Juniorseat II-II, available in two colourways.



Printed wind deflector.



Exhaust tailpipe cover, Chrome emphasizes the car's sporty looks.



Travel & Comfort System, folding table, mounts on the front seat headrest pillars.



Travel & Comfort System, coat hanger, mounts on the front seat headrest pillars.

Driving a BMW is always a special experience, but it can be made even more so with Genuine BMW Accessories thanks to their combination of unique ideas, supreme functionality and stunning design. Discover a wide range of innovative solutions, covering areas including the exterior and interior, communication and information, as well as transportation and luggage compartment solutions. For more information, please contact your local BMW Dealer or visit:

www.bmw.co.uk/accessories

118i ES	
BMW EfficientDynamics	Auto Start-Stop
	Brake Energy Regeneration
	Electric Power Steering (EPS)
	Intelligent Alternator Control
	Optimum Shift Indicator
Engine	BMW Four-cylinder in-line petrol engine
	– High-precision direct injection
	– VALVETRONIC with Double-VANOS
	Oil level display
Transmission	Gear lever, short shift
	Six-speed manual transmission
Wheels and chassis	16" light alloy wheel V-spoke style 229 with tyres 195/55 R16
	Lightweight double-joint spring-strut front axle with aluminium strut brace
	Rear-axle, five-link
Safety and technology	Airbags:
	– Crash sensor activating central locking release, hazard warning lights, fuel cut-off and interior lighting
	– Impact-dependent Airbag System (ID Airbags), driver and front passenger
	– Side airbags integrated into front seat backrests, driver and front passenger (head and thorax)
	Alarm system (Thatcham 1) with remote control and engine immobiliser
	Brake Force Display
	Deformation zones – front and rear with door reinforcements and bumpers that regenerate to their original shape in impacts of up to 2.5mph (4km/h)
	Disc brakes – front and rear with brake pad sensors
	Dynamic Stability Control (DSC) comprising:
	– Anti-lock Braking System (ABS)
	– Automatic Stability Control (ASC)
	– Cornering Brake Control (CBC)
	– Dynamic Brake Control (DBC)
	– Dynamic Traction Control (DTC)
	– Electronic Brake-force Distribution (EBD)
	First Aid kit and warning triangle
	Halogen headlights
	Head restraints – rear, adjustable and removable
	High level third brake light (boottlid)
	On-Board Diagnosis (OBD)
	Rollover protection system
	Seat belts – inertia reel at the front with pyrotechnical belt latch tensioner, belt force limiter and belt restrainer
	Seat belts – two with inertia reel, rear
	Side impact protection
	Visible VIN
	Windscreen washer jets
	Windscreen wipers with adjustable intermittent intervals

118i ES		
Seats	Child seat ISOFIX attachment, front and rear, with front passenger airbag deactivation	
	Four seats	
	Rear seat easy access system	
	Standard seats, manual adjustment	
Exterior equipment	All round anti-corrosion system with partial hot galvanising, phosphate treatment and cathodic dip paintwork, preservation of hollow cavities, underfloor protection	
	Exhaust tailpipe – single, oval	
	Exterior mirrors – aspheric, electric adjustment	
	Exterior parts in body colour:	
	– Bumpers	
	– Door handles	
	– Side sills	
	Indicator lenses, clear	
	Kidney grille, Chrome with Black vertical slats	
	Non-metallic paintwork	
	Soft-top, Black	
	Interior equipment	Air conditioning, manual
		Air microfilter
Battery in luggage compartment with jump start facility in engine bay		
Central locking switch		
Courtesy lights, front and rear with soft on/off dimming		
Door sill finishers with BMW designation, Black		
Electric windows – front with open/close fingertip control, anti-trap facility and comfort closing function		
Electra cloth upholstery – seats		
Floor mats, velour		
Handbrake lever, gear lever knob and gaters in Sensatec		
Interior trim, Satin Silver		
Lights-on warning		
Luggage compartment strap for small items		
Smoker's package		
Power socket, 12V in rear of centre console		
Securing rings in luggage compartment, four		
Start-Stop button		
Steering column with manual reach and rake adjustment		
Sun visors with vanity mirrors and ticket pocket		
Storage tray in rear seat support		
Sport leather multifunction steering wheel, three-spoke		
Toolkit located in luggage compartment		
Audio and communication		Auxiliary input point for auxiliary playing devices
		BMW Business radio with single CD player (with MP3 playback capability)
		On-Board Computer (OBC) comprising:
		– Average speed
		– Fuel consumption and range
	– Information display – analogue instruments combined with liquid crystal display	
	– Outside temperature display	
	Personal Profile functions	

118d ES

in addition/replacement to 118i ES	Four-cylinder in-line diesel engine with common-rail technology
	Diesel Particulate Filter (DPF)
	Digital Diesel Electronics (DDE)
	Incorrect fuelling protection system
	Oil dipstick
	Turbo
	BMW TwinPower Turbo four-cylinder in-line diesel engine
	- Common-rail technology
	- Variable vane geometry
	- Single turbo

All Exclusive Edition models

in addition/replacement to ES models	17" light alloy wheel Star-spoke style 371 with tyre size 205/50 R17
	Bluetooth hands-free facility with USB audio interface
	BMW Professional radio with single CD player (with MP3 playback capability)
	Boston leather upholstery, Pearl Grey with Grey stitching
	Door sill finishers, with BMW Edition designation
	Exhaust tailpipe - single, Chrome
	Exterior mirror caps, Oxide Silver
	Exterior trim, Chromeline
	Floor mats, velour with Grey piping
	Handbrake lever grip with Chrome finisher
	Interior trim, Brushed Aluminium with accent line
	Kidney grille, Chrome with Chrome vertical slats

118i / 118d SE

in addition/replacement to 118i / 118d ES	16" light alloy Double-spoke style 222 with tyre size 205/55 R16
	Air conditioning, automatic with convertible mode
	Armrest - front, centre
	Exterior mirrors, heated
	Extended lighting
	Foglights, front
	Park Distance Control (PDC), rear
	Rear-view mirror, automatically dimming
	Sport multi-function leather steering wheel
	Windscreen washer jets, heated

120d SE

in addition/replacement to 120d ES	16" light alloy Double-spoke style 222 with tyre size 205/55 R16
	Air conditioning, automatic with Convertible mode
	Armrest - front, centre
	Exhaust tailpipe - single, Chrome
	Exterior mirrors, heated
	Extended lighting
	Foglights, front
	Park Distance Control (PDC), rear
	Rear-view mirror, automatically dimming
	Sport multi-function leather steering wheel
	Windscreen washer jets, heated

All M Sport models	
in addition/replacement to SE models	17" light alloy Double-spoke style 207M with mixed tyres
	Door sill finishers with M designation, Chrome, front
	Exterior trim, High-gloss Shadowline
	Flashpoint cloth/Sensatec upholstery
	Handbrake lever and gear lever knob in leather
	Interior trim, Aluminium Glacier Silver
	M aerodynamic bodystyling
	M Sport suspension
	Run-flat tyres with Tyre Puncture Warning System (TPWS)
	Sport seats in Flashpoint cloth/ Sensatec, front
	M Sport multi-function leather steering wheel
125i M Sport	
in addition/replacement to All M Sport models	18" light alloy M Double-spoke style 261M with mixed tyres
135i M Sport	
in addition/replacement to 125i M Sport	BMW TwinPower Turbo six-cylinder in-line petrol engine
	– High-precision direct injection
	– VALVETRONIC with Double-VANOS
	– Single TwinScroll turbo
	Exhaust tailpipe – twin, Dark chrome
	Kidney grille, Chrome with Chrome vertical slats
	M aerodynamic package (unique to 135i, no foglights)
	M Sport suspension with 135i-specific calibration
	Optimised ASC/DSC parameters for specific calibration
	Power-assisted steering, hydraulic
	Rear spoiler
	Six-cylinder in-line engine with High-precision direct injection with four-valve technology
	Up-rated high-performance braking system
All Sport Plus Edition models	
in addition/replacement to M Sport models	18" light alloy wheel Double-spoke style 313, with BMW Performance designation
	Bluetooth hands-free facility with USB audio interface
	BMW Professional radio with single CD player (with MP3 playback capability)
	Boston leather upholstery, Black with Royal Blue stitching
	Door sill finishers, with BMW Edition designation
	Exterior mirror caps, Black
	Floor mats, velour with Royal Blue piping
	Kidney grille, Chrome with Black vertical slats
	Rear lights, Dark Line

Weight		118i	120i	125i	135i	118d	120d	123d
Curb weight EU ¹	kg	1.495 [1.520]	1.505 [1.535]	1.585 [1.615]	1.665 [1.675]	1.560 [1.575]	1.580 [1.590]	1.615
Gross vehicle weight	kg	1.860 [1.885]	1.870 [1.900]	1.950 [1.980]	2.030 [2.040]	1.925 [1.940]	1.950 [1.960]	1.980
Payload	kg	440	440	440	440	440	440	440
Axle load limit (front/rear)	kg	855/1.070	870/1.070	910/1.095	940/1.120	890/1.090	905/1.095	905/1.110
Trailer load, unbraked ²	kg	670	680	700	—	690	720	740
Trailer load, braked, 12% ²	kg	1.200	1.200	1.200	—	1.200	1.200	1.200
Trailer load, braked, 8% ²	kg	1.200	1.200	1.200	—	1.200	1.200	1.200

Engines ^{3,4}		118i	120i	125i	135i	118d	120d	123d
Cylinders/valves per cylinder		4/4	4/4	6/4	6/4	4/4	4/4	4/4
Capacity	cm ³	1.995	1.995	2.996	2.979	1.995	1.995	1.995
Stroke/bore	mm	90.0/84.0	90.0/84.0	88.0/85.0	89.6/84.0	90.0/84.0	90.0/84.0	90.0/84.0
Power output	kW/rpm	105/6.000	125/6.700	160/6.100	225/5.800	105/4.000	130/4.000	150/4.400
	(hp/rpm)	(143/6.000)	(170/6.700)	(218/6.100)	(306/5.800)	(143/4.000)	(177/4.000)	(204/4.400)
Max. torque/engine speed	Nm/rpm	190/4.250	210/4.250	270/2.500–4.250	400/1.200–5.000	300/1.750–2.500	350/1.750–3.000	400/2.000–2.250
Compression ratio:	:1	12.0	12.0	10.7	10.2	16.5	16.5	16.5

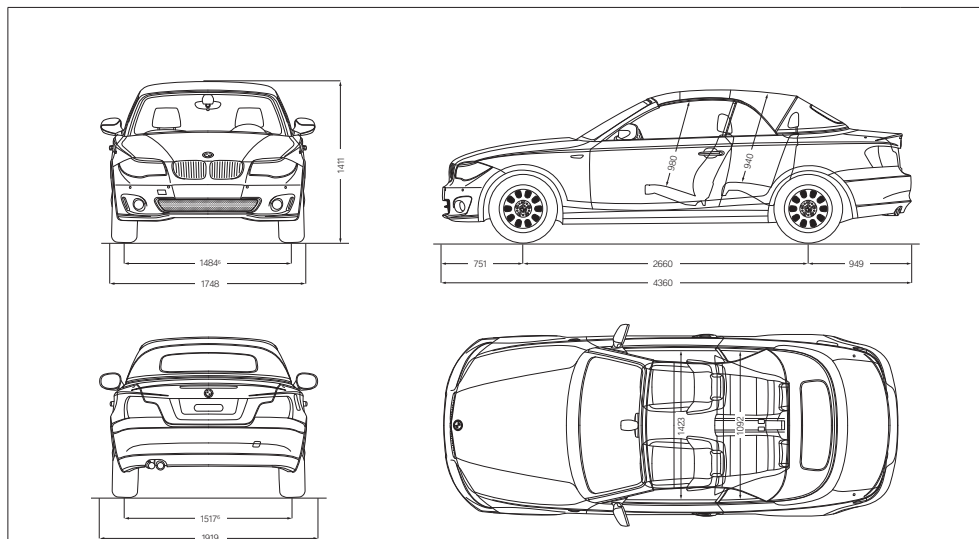
Transmission		118i	120i	125i	135i	118d	120d	123d
Manual transmission ratios								
	VIII :1	4.32/2.46	4.32/2.46	4.32/2.46	4.11/2.32	4.02/1.11	5.14/2.83	5.08/2.80
	III/IV :1	1.66/1.23	1.66/1.23	1.66/1.23	1.54/1.18	1.38/1.0	1.80/1.26	1.78/1.26
	V/VI/R :1	1.0/0.85/3.94	1.0/0.85/3.94	1.0/0.85/3.94	1.0/0.85/3.73	0.78/0.65/3.19	1.0/0.83/4.64	1.0/0.84/4.61
Final drive ratio:	:1	3.46	3.73	3.23	3.08	3.15	2.64	2.79

Performance		118i	120i	125i	135i	118d	120d	123d
Top speed	mph	130 [129]	137 [135]	148 [147]	155* [155*]	129 [129]	138 [137]	143 [143]
	km/h	210 [208]	220 [218]	238 [236]	250* [250*]	208 [208]	222 [220]	230 [230]
Acceleration 0–62mph	sec	9.3 [10.1]	8.4 [9.0]	6.8 [7.4]	5.6 [5.5]	9.5 [9.6]	8.1 [8.2]	7.5 [7.6]
Acceleration 50–75mph in IV/V gear (manual transmission)	sec	9.6/12.5	8.2/10.6	7.3/9.2	5.5/6.5	8.3/10.9	6.8/8.5	6.0/7.2

Fuel consumption ^{3,4}		118i	120i	125i	135i	118d	120d	123d
Urban	mpg	33.6 [31.0]	32.1 [30.1]	23.5 [23.9]	23.2 [23.9]	49.6 [40.9]	45.6 [40.9]	42.8 [39.8]
	l/100km	8.4 [9.1]	8.8 [9.4]	12.0 [11.8]	12.2 [11.8]	5.7 [6.9]	6.2 [6.9]	6.6 [7.1]
Extra-urban	mpg	52.3 [50.4]	50.4 [50.4]	45.6 [44.8]	43.5 [41.5]	65.7 [60.1]	65.7 [60.1]	62.8 [58.9]
	l/100km	5.4 [5.6]	5.6 [5.6]	6.2 [6.3]	6.5 [6.8]	4.3 [4.7]	4.3 [4.7]	4.5 [4.8]
Combined	mpg	43.5 [40.9]	41.5 [40.4]	34.0 [34.0]	32.8 [32.8]	58.9 [51.4]	56.5 [51.4]	53.3 [49.6]
	l/100km	6.5 [6.9]	6.8 [7.0]	8.3 [8.3]	8.6 [8.6]	4.8 [5.5]	5.0 [5.5]	5.3 [5.7]
CO ₂ emissions	g/km	152 [162]	158 [163]	194 [194]	200 [200]	127 [145]	132 [145]	139 [149]
Tank capacity, approx.	l	53	53	53	53	51	51	51

Wheels		118i	120i	125i	135i	118d	120d	123d
Tyre dimensions	front	195/55 R16	205/55 R16	205/50 R17	205/50 R17	195/55 R16	195/55 R16	205/50 R17
	rear				225/45 R17			
Wheel dimensions		6.5 J x 16	7 J x 16	7 J x 17	7 J x 17 7.5 J x 17	6.5 J x 16	7 J x 16	7 J x 17
Material		Light alloy	Light alloy	Light alloy	Light alloy	Light alloy	Light alloy	Light alloy

Electrical system		118i	120i	125i	135i	118d	120d	123d
Battery capacity	Ah	90 [70]	90 [70]	70 [70]	80 [80]	90 [80]	90 [80]	90 [80]
Alternator output	A	180	180	180	180	180	180	180
	W	2.520	2.520	2.520	2.520	2.520	2.520	2.520



All dimensions of the technical drawings in millimetres. Luggage compartment volume approx. 260-305 litres.

¹ Figures quoted include a 90% tank filling, 68kg for the driver and 7kg for luggage. Unladen weight applies to vehicles with standard specification. Optional equipment may increase these figures.

² The actual total weight of the trailer may not exceed the maximum permitted trailer load plus maximum permitted towbar download.

³ BMW recommends the use of RON 95 super unleaded petrol. Unleaded RON 91 and higher with a maximum ethanol content of 10% (E10) may also be used. Output and consumption figures apply to RON 98 fuel (135i minimum RON 95).

⁴ All engines comply with the EU5 emissions standard. Fuel consumption is determined in accordance with the ECE driving cycle (80/126/EEC). This is made up of approximately one third urban and two thirds extra-urban driving (based on the distance covered). CO₂ emissions are measured in addition to fuel consumption. Fuel consumption figures are based on vehicles with standard equipment. Optional equipment (such as broader tyres) can have a significant impact on fuel consumption.

⁵ Electronically limited.

⁶ Track width 125i, 135i and 123d front 1474mm and rear 1507mm, 120i and 120d front 1480mm and rear 1513mm.

Values in [] apply to vehicles with six-speed automatic transmission and seven-speed Double Clutch Transmission (DCT) on 135i M Sport.

AN INTRODUCTION TO LONDON 2012.

Why we were selected as the Official Automotive Partner for London 2012.

Our partnership with London 2012 is a natural fit for the business. Our emission lowering technologies, through the EfficientDynamics programme, will play a role in aiming to deliver the most sustainable Games possible. Our range of the world's most fuel efficient premium cars will transport the Olympic Family at the Games – including athletes, officials and the media – and shine a light on the future of mobility with our ground-breaking developments in the next generation of transportation.

The Games time fleet.

BMW Group's role is incredibly important to the success of the Games. The fleet that will mobilise the Olympic and Paralympic Games will be over 4,000 vehicles strong. A huge undertaking and commitment. Conventional and hybrid vehicles from the range will be used in the vast Olympic Games fleet and BMW Group will showcase electric vehicles as part of our role in London 2012.

We're proud to be a partner.

As a major investor and employer in the UK, our partnership will be an inspiration for our customers, employees and dealers, as we continue to develop market-leading innovations and technologies to shape the future of design, development and driving pleasure.

We are immensely proud of our partnership.

BMW London 2012 Performance Team.

BMW is proud to support Team GB and ParalympicsGB athletes through the BMW London 2012 Performance Team. We want to help the athletes qualify and succeed at the Games. Behind our intelligent technologies lies an understanding that even the smallest change can make a big difference to performance – something that every athlete knows. We'll be working with our London 2012 hopefuls to see how we can actively support them through our world-leading technical expertise. It's going to be an amazing journey.



MEET THE BMW LONDON 2012 PERFORMANCE TEAM.



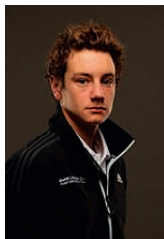
MARTYN BERNARD High Jump

My parents got me into athletics as a way of channelling my energy, and I haven't looked back. I won my first major medal in 2005 and am now focusing on London 2012, along with studying for my Law degree.



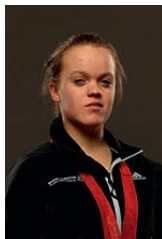
MARK HUNTER Rowing

I think the turning point in my career was moving to the prestigious Leander Club, which gave me the opportunity to row with the best athletes in the world. I strive to keep improving and, having already won gold in Beijing 2008, a win in London 2012 would be extra special.



ALISTAIR BROWNLEE Triathlon

I still remember the thrill of being told I could win medals by my local swimming club. The joy of being outdoors and active led me to my first triathlon when I was 10, and winning the World Junior Championships in 2006 drove me to pursue my Olympic dream. Hopefully I'm on track for London 2012.



ELLIE SIMMONDS Paralympic Swimming

I was inspired to take up competitive swimming by the Athens Paralympic Games in 2004. After winning two gold medals in Beijing 2008, I became the youngest person to be awarded an MBE, aged 14. Since then, I've been working hard towards London 2012.



JONATHAN BROWNLEE Triathlon

I started swimming at 4, but when I was 10 my Uncle was in a local triathlon and I couldn't wait to try it too. A month later I took part in my first event. That summer I watched Cathy Freeman race to victory in Sydney 2000 – and I can still remember every second.



LOUIS SMITH Gymnastics

My first Olympic Games was Beijing 2008, where I won the bronze for the men's pommel horse. That made me the first Briton to win a medal in the individual gymnastics since 1908. Since then I've picked up medals in 2009 and 2010. So hopefully I'm on track for London 2012.



TOM DALEY Diving

I started diving by chance when I was 7, and began competing just before my 9th birthday. There have been lots of highlights since then, including winning the World Championships when I was 15 and picking up two gold medals at the 2010 Commonwealth Games Delhi.



TOM AGGAR Paralympic Rowing

I started rowing after an accident in 2006 and won my first event at the British indoor championships that year. In 2007 I won gold in a world best time at the World Championships in Munich and I have recently won the International Rowing Federation's first 'Paralympic Rower of the Year' award – my next goal is gold at London 2012.

BMW LONDON 2012 PERFORMANCE TEAM

More athletes are coming soon. You can follow their journey at bmw.co.uk/london2012



official partner of the
Olympic and Paralympic Games

Condition Based Service. A key feature in most BMW models, Condition Based Service (CBS) signals an innovative leap forward in BMW Service diagnostic technology. The way it works is simple. CBS uses sensors to constantly monitor the areas of your BMW that are subjected to wear and tear. Based on the results of the data, CBS decides the extent to which servicing is necessary. This information is then stored in your vehicle's key. Using a KeyReader, BMW Service staff can download information to provide an accurate analysis of your vehicle. This means your BMW goes for a service only when it needs to, saving you an immeasurable amount of both time and money.

Service Intelligence. BMW Approved Technicians are experts in the use of diagnostic equipment, which quickly identifies if and why the vehicle is running at anything less than peak efficiency. This leads to rapid identification and rectification.

Service Assurance. For additional peace of mind, take comfort in the fact that every new BMW is covered by a three-year warranty that includes BMW Emergency Service throughout Europe. For more information on BMW Service, please contact your local BMW Dealer, BMW Service Authorised Workshop or visit www.bmw.co.uk/service.

TAILORED FOR YOUR VEHICLE. BMW SERVICE.



BMW Service Inclusive. Wouldn't it be good to know all your servicing costs in advance? Well, that's exactly what BMW Service Inclusive¹ provides and for a low one-off payment.

BMW Service Inclusive¹ lasts for 5 years or 60,000 miles (whichever occurs first) and covers all your vehicle's servicing requirements. Alternatively you can choose BMW Service Inclusive¹ Plus, which in addition to servicing also covers maintenance items such as brake pads, brake discs and windscreen wipers. And whenever servicing and maintenance work is carried out on your BMW, you can be sure that it will only be done by fully qualified BMW Service Approved Technicians at one of over 150 BMW Service Authorised Workshops around the country. Furthermore, only Genuine BMW Parts are used – each covered by a two year warranty.

BMW Service Inclusive and Service Inclusive Plus are transferable to subsequent owners within the time and mileage period, which can enhance the resale value of your car.²

¹ Service Inclusive and Service Inclusive Plus are available as cost options. Terms and conditions apply, for full details speak to your dealer or visit

www.bmw.co.uk/serviceinclusive

² For further information, please contact your local BMW Dealer.



BMW Assist. BMW Assist provides telematic and online services that are fully integrated with the BMW navigation and Bluetooth telephone systems to offer enhanced services.

This provides you and your passengers access to key information from within the vehicle, helping you keep safe and in touch. In the event of an emergency, a 999 SOS call can be triggered manually or in extreme situations automatically. Details of your vehicle and location will be sent directly to a 999 SOS Emergency Service centre so help can be sent without delay. A similar function is also available to connect you to a BMW Service Centre should you require roadside assistance. If you have locked your keys in your car, or cannot recall if you have locked your car, with Remote Services the BMW Service Centre can lock or unlock your vehicle remotely.

Information-based services are also included, you can make an Information Plus call to request addresses and telephone numbers are transferred to your vehicle. There is also the facility to send addresses and telephone numbers directly to your vehicle yourself with Google Maps. Using the in-car portal on your vehicle's Control Display you can check the latest news and weather, or access the Google Local Search from where you can look-up business addresses in the car yourself. The Routes service provides a route planning facility from the comfort of home, or access to download a variety of predefined BMW Routes across Europe.

BMW Assist services are free of charge for three years on any new BMW 1 Series Convertible equipped with an optional navigation system. Services require a connection to a UK mobile network. Services are not available in the Republic of Ireland, Isle of Man and the Channel Islands. Some services are available in other European countries. Terms and conditions apply.

SHAPING THE FUTURE – RESPONSIBLY.

The BMW Group has been ranked the most sustainable automotive company worldwide in the Dow Jones Sustainability Index for the sixth time in a row. Sustainability is an integral part of our value chain: from the development of efficiency and alternative vehicle concepts to environmentally-friendly production processes and recycling. Our research and development philosophy BMW EfficientDynamics delivers tangible benefits to customers, our climate and the environment. This is reflected in the reduction of CO₂ emissions by around 30% since 1995 within our European fleet of new cars.



EXPERIENCE MORE WITH BMW.



BMW Emergency Service. BMW Emergency Service is the only roadside and assistance programme designed specifically for BMW vehicles offering an exceptional range of benefits and services. It is available 24 hours a day, 7 days a week and utilises a dedicated fleet of BMW Approved Technicians, equipped with Genuine Parts and tools, ensuring that you and your vehicle receive the best possible care in the event of any motoring emergency. This tailor-made programme has been specifically designed to meet the needs of BMW drivers travelling in the UK, Republic of Ireland and Continental Europe giving complete reassurance and peace of mind. Every new BMW is covered for three years.



BMW Financial Services. Chances are you've already decided on the BMW you want to drive. Now discover the perfect finance solution to get you behind the wheel. BMW Financial Services offers a range of tailor-made finance and insurance packages designed to suit you and your budget. And if you opt for insurance from BMW Financial Services, you'll be prepared for all eventualities. For more information, contact your local BMW Dealer. Alternatively visit www.bmwfs.co.uk or call us on 0870 5050 150.

Our comprehensive range of finance and insurance products includes:

- BMW Select (Personal Contract Purchase)
- BMW Hire Purchase
- BMW Contract Hire
- BMW Leasing
- BMW Car Insurance
- BMW Income Protection
- BMW Shortfall



BMW Magazine. Every new BMW customer receives a complimentary subscription to BMW Magazine. This publication features all the latest news and developments from BMW, together with a variety of driving and lifestyle features.

BMW News. To ensure you're one of the first to hear the latest BMW news and developments, BMW UK offer an email programme. Sign-up at: www.bmw.co.uk/newsletter.



BMW World, an iconic building in the Munich skyline. The BMW World is a true brand experience where it's possible to marvel at the historic BMWs in the museum, learn about our engineers' newest innovations and take a tour of the plant to experience with your own eyes the cutting-edge and exacting methods used to create a BMW.

Because vehicle manufacturing requires a lot of water, we have developed intelligent circulation systems for our plants to recycle it as often as possible. We have already achieved our goal of zero waste water production at our engine plant in Steyr where, in 2008, 733,500 engines were manufactured without any waste water.

Sustainability is a key concern for the BMW Group. This is why we rely primarily on environmentally friendly means of transportation such as rail and ships. For instance, we cover approximately 15.8 billion tonne-kilometres annually transporting materials and new vehicles and 79%

of the entire volume is conveyed by sea. This eases the burden on roads and the environment. The BMW Group is always looking to the future, so your BMW is part of an extensive recycling concept where every vehicle can be recycled easily and economically. To hand back your end-of-life vehicle, please contact your BMW Dealer. Further information is available at:

➤ www.bmw.com/recycling
➤ www.bmw.co.uk/EfficientDynamics

More about BMW



The Ultimate Driving Machine

www.bmw.co.uk



The models, equipment and possible vehicle configurations (standard and optional equipment) illustrated in this Brochure reflect the specifications of vehicles supplied by BMW AG to the German market. In other EU member states, individual models' equipment content and possible configurations of standard and optional equipment may vary. For precise information on the various country-specific versions available, please contact your local BMW Dealer. Subject to change in design and equipment. Part number 94 23 1 128 800.
© BMW AG, Munich/Germany. Not to be reproduced wholly or in part without written permission of BMW AG, Munich.

BMW recommends  **EDGE**

