



The BMW 3 Series Convertible.
Elegance, comfort and driving pleasure.
With nothing but the sky above.





Enjoying the very best life has to offer.

Driving in the open air is a unique way of life – you might even call it a philosophy. It means far more than “just” freedom of space reaching all the way to the sky. Because driving the BMW 3 Series Convertible offers you perfect harmony of mobility on the one hand and nature on the other. It allows you to share your joy of life with four comfortable seats in the sun – in a car offering a truly incomparable standard of elegance and aesthetic design all in one.

Contents

Design
pages 4–5

Roof
pages 6–7

Hardtop
pages 8–9

Interior
pages 10–11

Drive technology
pages 12–13

Safety
pages 14–15

M3 Convertible
pages 16–17

BMW Optional packages
page 18

BMW Service,
BMW Financial Services
page 19

BMW Technology Guide
pages 20–23

Specifications
pages 24–25

Standard equipment
pages 26–28

Optional equipment
page 29

Colours and upholsteries
pages 30–35

**True elegance means perfect harmony of all details.
Applying this fundamental principle, we build more than
a Convertible. We create quality of life.**



It is fair to say that the BMW 3 Series Convertible offers the utmost in aesthetic looks and exclusive style. The harmonious synthesis of all components of the BMW 3 Series

Convertible creates a car with true elegance throughout. The dynamic wedge shape of the body with its clear and sleek lines is simply unmistakable. So whether you prefer driving

in the open air or with the roof up, the BMW 3 Series Convertible invariably offers more than the sum of all the details. Just consider where else you will find such incom-



parable elegance, such sophisticated character and individual flair all combined with the everyday driving qualities of a top-of-the-range car. Since sharing this kind

of open-air experience with others means at least twice the fun, the BMW 3 Series Convertible comes with four full-sized seats for your ultimate driving pleasure.

Where design becomes a pleasure to behold.
Whether open or closed, the aesthetic design of the BMW 3 Series Convertible is always there to be admired. In fact, you can even feel it.



The very low and sleek body line of the BMW 3 Series Convertible, together with the low-slung tail section, accentuates the elegance and dynamic looks of the car. This elegance in design is further

enhanced on the BMW 3 Series Convertible by the supreme quality of all features – particularly important in a car of this calibre. Which also means that the BMW 3 Series Convertible gives you all the comfort you

rightly expect. The luggage compartment, for example, offers lots of space for a convertible. Made up of no less than three layers, the soft roof efficiently keeps out noise and cold weather. So whether

Available with a choice of three different colours, the soft roof opens and closes with utmost ease. Whether fully

automatic or operated by hand, the roof moves up and down easily within a matter of seconds.

If you prefer driving in the open without the slightest draught, the wind deflector is exactly what you need, offering all the

freedom of open-air motoring without any air swirl around your shoulders and neck (dealer fitted accessory).



you prefer driving in the open or with the roof up, the BMW 3 Series Convertible gives you uncompromising driving pleasure without missing out on any of the pleasures of life.

How to turn your BMW 3 Series Convertible into a completely different car.

With a light-alloy hardtop converting the Convertible into a unique Coupé.



Carefree all year round motoring was what BMW's engineers had in mind when developing the BMW 3 Series Convertible hardtop. Creating a Convertible and Coupé in one, the hardtop also offers

rational advantages. It gives the owners all kinds of options in enjoying sheer driving pleasure, without requiring them to make any concessions. They can rely on their Convertible the whole year



round, converting it whenever they wish with the light-alloy hardtop in body colour into a truly individual, unique coupé.

Follow your intuition.

You feel at home immediately in the cockpit of the BMW 3 Series Convertible. Where all controls and instruments are exactly where you would expect them. Which allows you to concentrate on one thing in particular: the road around you.



Excellent seats for relaxed motoring – comfort is an important feature in the BMW 3 Series Convertible, where top-quality materials and careful finish create an unmistak-

able ambience. Available as an option, leather upholstery further refines the pleasure of driving your BMW 3 Series Convertible, especially as you have the choice of a whole

range of colours. Then additional materials give you further opportunities to personalise your BMW 3 Series Convertible even more to your taste. But the interior of the

BMW 3 Series Convertible is not only a pleasure to behold, since the cockpit, clearly reflecting BMW's design philosophy, is also built ergonomically around the driver. The

With significant output and efficiency, the heater in the BMW 3 Series Convertible allows you to drive with the roof down also on a cool day. Optional seat heating for the driver and passenger serves additionally to keep you pleasantly warm.



The ergonomical principles of BMW design apply equally to the BMW cockpit. High-quality materials and perfect craftsmanship create an atmosphere that promotes safe driving.



bottom line, therefore, is that you will feel perfectly at home in this car. Not only when driving with the roof down and with blue skies above.

**Many engines have power.
BMW engines also have refinement.
BMW has always been the leader in engine technology.
Which is why BMW engines excel through their supreme
torque, power and motoring refinement.**



Displacing 2.5 and 2.8 litres, BMW's straight-six engines clearly reflect our engine philosophy through their smooth refinement, free-revving performance, and powerful torque. They are

characterised both by impressive flexibility and performance as well as superior efficiency. They stand out through many achievements in technology, variable camshaft control (VANOS), for example,

providing a powerful torque curve with substantial power from low engine speeds. Another achievement of modern technology is cylinder-specific knock control getting the most out of the fuel con-

The Standard 5-speed manual transmission allows you to use the powerful engine extremely efficiently.

BMW's four-cylinder engines are acknowledged as being among the best. With impressive torque and superior economy, they ensure excellent performance on very little fuel.



sumed. The solid-state ignition system, in turn, incorporating a separate coil for each spark plug, maximises both the precision and efficiency of the ignition process. The compact and smooth four-cylinder

1.8-litre petrol engine, finally, stands out in particular through its superior torque and all-round efficiency. An engine, quite simply, which ranks among the best four-cylinders in its class.

A really tough character whenever necessary.
To see how good an open car really is, you have to check the safety it has to offer.



Like with all our cars, our engineers have focused in particular on your safety in designing and building the BMW 3 Series Convertible. Which is why the convertible offers all the benefits of BMW's F.I.R.S.T. (Fully Integrated Road Safety

Technology) safety system, clearly proving that even a convertible can be a very safe car. The bodyshell guarantees outstanding torsional stiffness, meets all requirements also in terms of impact protection from the side, and

therefore provides stability and safety absolutely excellent for an open car. The windscreen frame is reinforced to act as a rollbar, and the safety system even includes Automatic Stability Control + Traction (ASC+T, standard on all

Fitted as standard, the automatic roll over safety system ensures additional protection for the passengers at the rear, the two rollbars moving up instantaneously in a critical situation.



The driver airbag is fitted as standard. The optional passenger airbag is combined with a seat occupation detector, the passenger airbag is then only actuated in a collision if the passenger's seat is really occupied.



models) preventing the wheels from spinning particularly in critical situations and maintaining optimum driving stability at all times. Up to a speed of 25 mph, wheel spin is prevented by the brakes intervening separately on the rear

wheel about to spin, while at speeds above 25 mph ASC+T intervenes directly in the engine management, stabilising the car in bends and helping you set off smoothly even on slippery surfaces such as ice and snow.

Probably one of the most thrilling experiences under the sun.

The power of the BMW M3 Evolution plus the style of a Convertible. The BMW M3 Evolution Convertible.



With unlimited headroom and bright sunshine added to the performance and power of the BMW M3 Evolution, driving in the open becomes a particularly thrilling, quite unparalleled experience. You might even call it a unique

blend offering you the best of both worlds: the performance of a thoroughbred sports car and the thrill of motoring with nothing but the sky above. It is only obvious that you can rely in full on the high safety standard offered by your

BMW M3 Evolution Convertible, featuring all the benefits of BMW's F.I.R.S.T. (Fully Integrated Road Safety Technology) safety concept, where all safety-relevant systems and components interact with one another. The bodyshell itself

offers supreme torsional stability, meets all demands in terms of additional side-impact protection, and thus ensures a standard of stability and safety quite unique for an open car.

Developing an impressive 321 bhp, this masterpiece of engine technology makes the BMW M3 Evolution Convertible an open sports car for supreme driving pleasure with ultimate in power and performance.



The 6-speed manual transmission which is standard in the BMW M3 Evolution allows you to use this outstanding engine extremely efficiently, even at high speeds.



The optional Sequential M Gearbox (SMG) allows split-second gear shifting. A brief pull backwards puts you into higher gear, a brief push forward shifts down. A clutch pedal no longer exists.



From a 3 Series Convertible to a unique package. This calls for individuality of the highest level. For ultimately the unique, inimitable car is the result of many personal decisions. Precisely this is the freedom we strive to offer you.



BMW's original light-alloy wheels give your car a visible sign of distinction. For example BMW's 7Jx16 light-alloy

wheel in multi-spoke styling with the 7J x 16 light alloy wheel in cross-spoke styling both with 225/50 R 16 tyres.

The M design leather-trimmed airbag steering wheel is distinguished by its special thumb profile. The seams in the BMW M colours and the M logo enhance the look.

With the automatic climate control the amount of air and its distribution can be regulated at the touch of a button and all the settings are maintained irrespective of the car's speed.



BMW Service.

In the area of service, our primary objective is first class, personalised customer care.

We want our customers to keep returning to buy BMW cars, and we recognise that only complete satisfaction, throughout ownership, will ensure this. Reliable and economical service begins with the development of BMW cars. Design concepts incorporate easy repair, while sophisticated technical systems, such as the BMW Service Interval Indicator and On-Board Diagnosis, ensure scheduling of services to match how the car has been driven and provide rapid and accurate diagnosis of faults. These systems are backed by a Dealer Network dedicated to delivering customer satisfaction. Their investment in technicians trained by BMW to BMW standards, and the most advanced equipment, designed by BMW for exclusive use on our cars, ensures you receive

exemplary technical service. Their use of BMW Approved Parts also ensures cost effective servicing and repair to the highest levels of accuracy and reliability to maintain your car to its original design qualities. Finally, for complete peace of mind, this is all backed by the 3 Year BMW Dealer Warranty* with a 60,000 miles limit incorporating the BMW Emergency Service. The BMW Service Card represents your entitlement to this service, which in case of emergency, provides attendance and recovery throughout Europe, to get you and your car back home, or to your final destination.



*Restrictions apply. Please consult your local dealer for details.

BMW Financial Services offers a series of financing options to suit the needs of BMW customers.

Each package can be tailored to suit your individual needs.



BMW Financial Services will allow you to drive the BMW you choose at a budget you can afford. BMW Financial Services offers a complete portfolio of finance facilities for the discerning BMW driver – for your own use or your business. The finance facility you choose can be matched to suit both your budget and your current and future motoring requirements, be they for private or business use. BMW Financial Services also offers the option of budgeting your maintenance costs via BMW Contract Maintenance. Our range includes

insurance, designed to the highest BMW standards, for carefree motoring and genuine peace of mind. The BMW Financial Services/Insurance facilities include:

- * Hire Purchase
 - * Lease Purchase
 - * Select
 - * Leasing
 - * Contract Hire
 - * Guaranteed Payment Plan
 - * Shortfall Insurance
 - * BMW Insurance
- Call 0345 320520.

If you require further information, please contact either your local BMW dealer, or BMW Financial Services at the following address: BMW Financial Services (GB) Limited
Europa House
Bartley Wood
Hook
Hampshire
RG27 9UF
Written quotations are available on request from your local dealer. Indemnities may be required. For details of your nearest BMW dealer, please call 0800 325 600. Further information can be found on the Internet: <http://www.bmw.co.uk>

The BMW Technology Guide. More about innovative BMW technology and its benefits.



The electronic immobiliser: Two electronic codes in the key protect your car from unauthorised use.

Why the BMW 3 Series Convertible offers such excellent safety.

Featuring **Shiftlock** and **Interlock**, BMW offers you extra safety on cars fitted with our optional automatic transmission. Shiftlock prevents the car from being started inadvertently, for example by children, allowing the selector lever to be moved from position P or N with the ignition switched on only when you press down the brake pedal at the same time. Interlock, in turn, makes sure that the car cannot roll away with the key removed from the ignition, since the key may only be removed in selector lever position P.

BMW's F.I.R.S.T. (Fully Integrated Road Safety Technology) safety concept coordinates all safety features to provide optimum, all-inclusive safety on the road: active and passive safety, protection of the vehicle itself, and protection of other road users.



With superior torsional and flexural stiffness: The open bodyshell of the BMW 3 Series Convertible.

The high standard of **torsional** and **flexural stiffness** of the convertible bodyshell is an essential prerequisite for the superior safety and excellent driving comfort the 3 Series Convertible has to offer. The windscreen frame is extremely stiff, additional door reinforcements, special support members and extra-large load-bearing structures giving the passenger compartment above-average stability. This high level of static

and dynamic stiffness also provides the foundation for the exactly calculated kinematic behaviour of the central arm rear axle and spring-strut front axle. And last but certainly not least, the very stable body largely eliminates any annoying noise.

Sidebags for the driver and front passenger are also available on the BMW 3 Series Convertible, significantly reducing the risk of injury at chest level in a collision from the side.

Automatic Stability Control + Traction (ASC+T) prevents the wheels from spinning and guarantees optimum driving stability. Up to a speed of 25 mph, Traction Control (T) generates brake force acting on the wheels when required. With the left and right wheel being braked independently of each other, ASC+T acts in a similar way to a limited-slip differential, offering locking action from 0 to almost 100 per cent.



The central arm rear axle offers excellent directional stability.

Should the drive wheels threaten to spin at high speeds, engine management reduces drive power accordingly, keeping the car stable and exactly on course. To allow greater wheel spin when desired, for example in order to "rock the car free" when stuck on a loose surface, ASC+T may be deactivated.

Fitted as standard, the **rollover safety system** comprises two recessed aluminium bars fitted behind the rear-seat headrests and pre-tensioned by powerful springs. As soon as the angle of the vehicle, its longitudinal or lateral acceleration exceed a certain point, the bars move up instantaneously by a maximum of 27 cm before being held back by a dampened stopper mechanism just in front of the soft roof or hardtop. Then they remain securely in position for maximum safety. Whenever acti-

vated without an accident having occurred, the rollbars can easily be pre-tensioned again without requiring you to go to your BMW dealer.

The **electronic immobiliser** safeguards your car with unique efficiency: The ignition key comprises an electronically coded chip based on your own permanent personal code and a second code modified by the electronic immobiliser every time the engine is started. Immediately when switching on the ignition, this "intelligent" system first reads your personal code and then checks the individual code varied each time. If both responses are accepted, the immobiliser transfers a coded signal actuating the Digital Motor Electronics (DME). Without this signal the engine cannot be started, not even by short-circuiting. The energy required for exchanging data in the manner described is conveyed by a transponder in the steering wheel lock, ie, through a wireless connection. The same transmission system is

used on keys with remote control. Should the battery of a remote control key run flat, you can obviously still unlock the doors of your car and start the engine. If, finally, you one day lose your key, you can have it cancelled by your authorised BMW dealer.

What makes the suspension of the BMW 3 Series Convertible so special.

The **central arm rear axle** is a multi-link configuration resting on two track control arms and one longitudinal arm pivoting on the central base in the body of the car. Precise interaction of these arms ensures that the wheels remain firmly on the road at all times, regardless of spring motion. The result is excellent directional stability, the elastic steering mounts even giving the axle a specific steering effect and providing

additional stability in bends. The mounts also absorb even the smallest vibrations caused by bumps on the road and give the car excellent roll comfort and acoustic control.



Safety in extreme situations: Automatic Stability Control + Traction (ASC+T) prevents the wheels from spinning and ensures optimum driving stability.



"Intelligent" engine management thanks to Digital Motor Electronics (DME).



Available as an option, the Multi-Information Display (MID) gives the drivers exact information on the technical condition of their car whenever desired.

How Digital Motor Electronics saves you time and money.

Digital Motor Electronics (DME) controls, monitors and masterminds all major functions such as the car's ignition and fuel injection, as well as numerous ancillary functions such as the oxygen sensors. Accordingly, DME guarantees optimum performance on minimum fuel and with minimum emissions.

On-board diagnosis is one of the functions of DME serving to detect deficiencies before they can do any harm. Defect reports are memorised electronically and may be displayed on the screen of the BMW Diagnostic Information System at the dealership, facilitating the process of trouble-shooting and keeping repair costs to a minimum.

Which control functions give you information on your BMW 3 Series Convertible while you are on the road.

The **Service Interval Indicator** shows you when the next service or oil change is coming up. Depending on how you drive your car, you can therefore determine your service requirements yourself.

Energy Control constantly informs the driver at speeds over 12.5 mph of their current fuel consumption, in this way promoting an energy-conscious style of motoring. The analogue display is integrated in the rev counter.

Available as an option on the 323i and standard on the 328i and M3 Evolution **Check/Control** monitors all major functions of the car, informing the driver of their status or any deviations from target values. The main bulbs and lights are also checked when not switched on, their function therefore being displayed at all times by

a text message on the Multi-Information Display (MID) supported by an acoustic signal. Depending on their significance, messages are split up into three priority levels.

Fitted as an option, the **Multi-Information Display (MID)** housed in the centre console gives the driver important information on the technical condition of his car, thus ensuring greater safety and reliability. Check/Control, for example, displays deficient functions by way of a text message and presents information from the on-board computer fitted as an option. MID comes complete with a digital clock.

Why BMW engines are so refined, full of torque, but fuel-efficient all the same.

The **twin-mass flywheel** (standard from the 323i Convertible) prevents even the last, unavoidable vibrations caused by the firing pulses conveyed by the engine from reaching the transmission via the clutch. Accordingly, not even the slightest noise is able to reach the passenger compartment even at very low engine speeds.

Variable camshaft control (VANOS) masterminded by DME hydromechanically adjusts the inlet camshaft by 12.5° as a function of engine speed and accelerator position. The inlet valves are opened later at low engine speeds in the interest of better idling quality and running smoothness. At medium engine speeds, in turn, the inlet valves are opened earlier for extra torque and exhaust gas recirculation within the engine reducing both fuel consumption and exhaust emissions. At high engine speeds, finally, the valves are once again opened later in order to generate maximum power.



For even smoother idling and enhanced refinement: variable camshaft control (VANOS).

Four-valve technology (from the 323i Convertible) with the spark plug in the centre ensures an even better cylinder charge as the prerequisite for enhanced power and torque. Benefitting from two inlet and two exhaust valves per cylinder, the engine is able to draw in more air and expel more exhaust gas in a shorter period. Another factor is that the particular arrangement of the four valves makes the design of the combustion chambers even more efficient, in this way helping to reduce fuel consumption.

With the **solid-state distributor system** each cylinder and spark plug has its own separate coil. The result is even smoother combustion and even greater fuel efficiency.

Individual-control intake manifolds (DISA) on the BMW 318i Convertible provide an even better torque curve throughout the entire engine speed range. At low engine speeds long intake travel ensures high torque, at high engine speeds a connection flap opens up between the intake manifolds to provide short intake travel for maximum power and performance.

What comfort the BMW automatic transmissions have to offer.

The **electronic/hydraulic (EH) automatic transmission** conveys power hydraulically from the engine to the gearbox. Gears are selected automatically according to your specific driving situation. You have the option to choose between an economic (E) and a sporting (S) style of motoring. With its active layout, the 5-speed EH automatic transmission shifts back to a lower gear also at high speeds in the interest of fast and powerful acceleration. Fifth gear serves as an overdrive economy gear. You also have a special winter driving program (*) enabling you to start off sensitively, for example on slippery surfaces, by keeping gear changes particularly soft and smooth. By contrast, 4-speed EH automatic transmission on the BMW 4-cylinder retains the gear selected in program M, enabling you, for instance, to start off more easily in third gear on snow and slush.



Giving you the choice of a more economic or sporting style of motoring: BMW's "intelligent" 5-speed EH automatic transmission.

Specifications.

Weight		318i	323i	328i	M3 Evolution ¹⁾
Unladen, EU ²⁾	kg	1445 (1485)	1495 [1530]	1505 [1540]	1635
Max permissible	kg	1770 (1810)	1820 [1855]	1830 [1865]	1980
Permitted load	kg	400	400	400	420
Permitted trailer load, unbraked	kg	640	670	670	-

Engine ³⁾		318i	323i	328i	M3 Evolution ¹⁾
Cylinders/valves		4/2	6/4	6/4	6/4
Capacity	cc	1796	2494	2793	3201
Max output	kW/bhp/rpm	85/115/5500	125/170/5500	142/193/5300	236/321/7400
Max torque	Nm/rpm	168/3900	245/3950	280/3950	350/3250
Compression ratio	:1	9.7	10.5	10.2	11.3

Performance		318i	323i	328i	M3 Evolution ¹⁾
Drag coefficient	c_d	0.35	0.35	0.35	0.36
Top speed	km/h/mph	194 (189)/121 (117)	218 (215)/135 (134)	230 [226]/143 [140]	250/155 ⁴⁾
Acceleration 0-100 km/h (62 mph)	sec	12.5 (13.7)	8.6 [9.7]	7.7 [8.4]	5.6
Standing-start km	sec	33.7 (34.9)	29.8 [30.8]	28.6 [29.3]	25.0
Flexibility 80-120 km/h in 4th gear (standard gearbox)	sec	12.1	10.0	8.4	6.1

¹⁾ For more details on the M3 Evolution Convertible, see the M3 Evolution models brochure.

²⁾ According to the EC standard, the figure quoted includes 90 per cent tank capacity and 68 kg for the driver and 7 kg for luggage. Unladen weight applies to vehicles

in standard trim. Optional equipment may increase this figure.

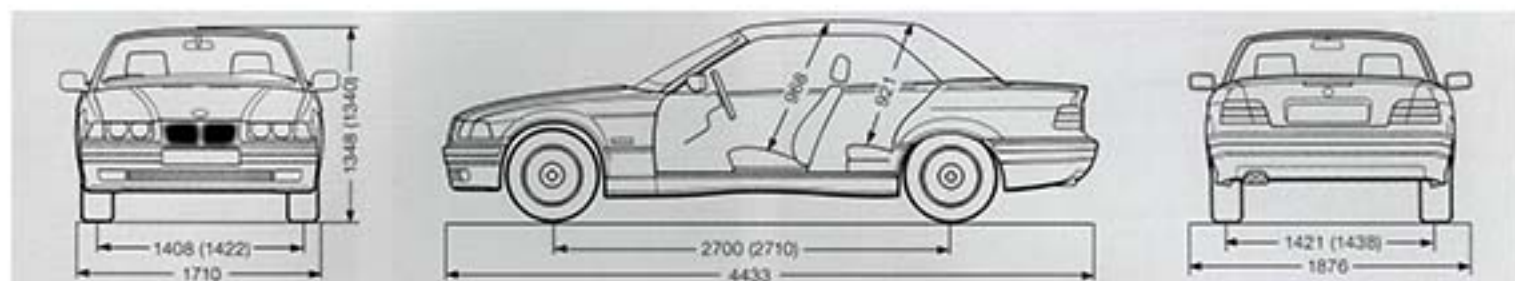
³⁾ Engines with knock control are designed for RON 95 fuel. Use of RON 98 reduces consumption under normal conditions and increases power accordingly.

⁴⁾ Electronically limited.

⁵⁾ Figures apply to directive 93/116/EC.

Figures in () apply to vehicles with 4-speed automatic transmission.

Figures in [] apply to vehicles with 5-speed automatic transmission.



All dimensions in mm; figures in brackets apply to the M3 Evolution Convertible.

Fuel consumptionsm

		318i	323i	328i	M3 Evolution sm
Urban (cold)	ltr/100 km/mpg	11.6 (13.2)/24.4 (21.4)	12.9 [15.2]/21.9 [18.6]	13.5 [15.5]/20.9 [18.2]	17.0/16.6
Extra urban	ltr/100 km/mpg	6.7 (7.3)/42.2 (38.7)	6.8 [7.5]/41.5 [37.7]	6.8 [7.5]/41.5 [37.7]	7.7/36.7
Combined	ltr/100 km/mpg	8.5 (9.4)/33.2 (30.1)	9.1 [10.3]/31.0 [27.4]	9.3 [10.4]/30.4 [27.2]	11.1/25.4
CO ₂ emissions	g/km	192 (221)	215 (245)	221 [248]	270
Tank capacity, approx.	ltr	62	62	62	62

Wheels

Tyre dimensions	205/60 R 15	205/60 R 15	205/60 R 15	Front: 225/45 R 17 Rear: 245/40 R 17
Rim dimensions	7 J x 15	7 J x 15	7 J x 15	Front: 7.5 J x 17 Rear: 8.5 J x 17
Material	Light alloy	Light alloy	Light alloy	Light alloy

Standard equipment.



Fog lamps in free-form technology.



Protection offered to all occupants: the standard active rollover safety system.



Steering wheel with driver's airbag.

● = standard ▲ = cost option

Safety	318i	323i	328i
Airbag for driver	●	●	●
Anti-lock brake system (ABS)	●	●	●
Automatic Stability Control+Traction (ASC+T)	●	●	●
Brakes: - Disc brakes at the front	●		
- Disc brakes at the front, inner-vented		●	●
- Disc brakes at the rear	●	●	
- Disc brakes at the rear, inner-vented			●
Bumper system with aluminium impact absorbers front/rear regenerating to their original shape in collisions up to 2.5 mph and with deformation units at the front acting up to 9 mph	●	●	●
Central locking with electronic immobiliser, crash sensor, fuel tank filler flap integrated in central locking, two master keys and reserve keys with integrated chip, master keys with mini-torch	●	●	●
Crumple zones front and rear	●	●	●
Parking protection by wrap-around plastic bumpers and side rubbing strips	●	●	●
Power steering with safety steering column	●	●	●
Rollover safety system incl headrests at the rear	●	●	●
Seat belts: - Inertia-reel seat belts at the front with pyrotechnical belt latch tensioners and belt force limiters	●	●	●
- 2-point lap belt in centre	●	●	●
- 3-point inertia-reel seat belts at the rear	●	●	●
Side impact protectors, integrated	●	●	●
Side indicator repeaters	●	●	●
Third brake light	●	●	●
Engine			
4-cylinder in-line engine with two-valve technology	●		
6-cylinder in-line engine with four-valve technology		●	●
Cylinder-specific knock control	●	●	●
Digital Motor Electronics (DME)	●	●	●
Distributor system, solid-state	●	●	●
Individual-control intake manifolds (DISA)	●		
Light-alloy cylinder head	●	●	●
On-board diagnosis	●	●	●
Three-way catalytic converter, heated oxygen sensor, activated carbon filter, controlled tank purge	●	●	●
Valve drive with roller-type rocker arms	●		
Valve play compensation, hydraulic	●	●	●
Variable camshaft control (VANOS)		●	●



Whether fully automatic or operated by hand, the roof moves up and down easily within a matter of seconds.



Electric window lifts front and rear with fingertip control.



Storage nets on front seat backrest panels.

Transmission/suspension

	318i	323i	328i
5-speed manual gearbox	•	•	•
Central arm rear axle with anti-squat and anti-dive, anti-roll bar	•	•	•
Spring-strut front axle with anti-dive and anti-roll bar	•	•	•
Twin-mass flywheel (on manual gearbox models)		•	•

Exterior features

All-round rustproofing with hot galvanising, phosphate coating and cathodic dip bath, preservation of hollow cavities, underfloor protection	•	•	•
Bumpers in body colour at the top, in silky-matt black at the bottom	•		
Central roof opening/closing handle for single-handed operation	•	•	
Engine compartment and luggage compartment lids supported when open by gas pressure springs	•	•	•
Exterior mirrors and grab handles on luggage compartment lid finished in body colour	•	•	•
Exterior mirrors in aspheric design, heated and electrically adjustable	•	•	•
Fog lamps in free-form technology	△	•	•
Fully painted bumpers in body colour	△	•	•
Fully automatic electric roof	△	△	•
Heat-insulating glass, green, with laminated windscreen	•	•	•
Roof made up of three layers, with interior roof liner and exchangeable plastic rear window, green-tinted	•	•	•
Wheel arches at the front with plastic inserts	•	•	•
Wheels, light-alloy wheels in sports spoke II styling, 205/60/R15 tyres, 15-inch	•	•	•

Interior features

Analogue-face clock in centre console	•	•	
Analogue-face instruments illuminated from behind	•	•	•
Armrests in the doors with integral closing handles	•	•	•
BMW Business RDS radio	•	•	•
BMW toolkit in box on the luggage compartment lid	•	•	•
Charge socket for torch in glove compartment	•	•	•
Courtesy light dimming function with "soft" on/off	•	•	•
Courtesy lights package with footwell lights at the front and illuminated vanity mirror for the driver (with slide cover) and front passenger	•	•	•
Courtesy lights with map reading lights	•	•	•
Digital clock	△	△	•
Door cutouts with aluminium trim	•	•	•
Front seats fully reclining with fine backrest adjustment, seats adjustable for length and height	•	•	•

Standard equipment (continued).



The radio BMW Business RDS is standard on all BMW Convertibles.



The glove compartment is illuminated and locks with the central locking.

● = Standard ▲ = Cost option N/C = No cost option

Interior features

	318i	323i	328i
Front seats moving forwards automatically when tilted to the front, front passenger seat backrest may be released from driver's seat	●	●	●
Gear lever gaiter, handbrake handle and gaiter finished in leather	●	●	●
Glove compartment, illuminated, lockable by central locking	●	●	●
Headlight range control, electrically adjustable	●	●	●
Headrests at the front, adjustable for height and angle	●	●	●
Heating electronically controlled and independent of road speed, multi-stage radial blower	●	●	●
Interior rear-view mirror with automatic anti-dazzle function (electrochromatic), incl courtesy lights package	●	●	●
Interior with velour carpeting, driver footrest integrated in side panel	●	●	●
LIGHTS ON? warning	●	●	●
Luggage compartment capacity 230 ltr (to VDA standard)	●	●	●
Luggage compartment with full carpeting	●	●	●
Luggage holders on luggage compartment mat	●	●	●
Luggage net on front seat backrests	●	●	●
Multi-Information Display with Check/Control (alphanumeric)		▲	●
No-smoker package	N/C	N/C	N/C
Outside temperature display	▲	▲	●
Preparation for BMW 6 disc CD autochanger	●	●	●
Rev counter with Energy Control, fuel gauge, coolant thermometer, LC display for mileage and trip counter	●	●	●
Service Interval Indicator	●	●	●
Side windows at the front moving down and up automatically by approx 12 mm when opening and closing doors	●	●	●
Side windows moving down automatically by approx 30 mm when closing roof	●	●	●
Spare wheel beneath floor of luggage compartment	●	●	●
Steering wheel manually adjustable for angle	●	●	●
Sports steering wheel rim and gearshift lever knob in leather	●	●	●
Storage space in the centre console, tunnel console, in boxes at the front end of the doors, extra storage space on cars with no-smoker package	●	●	●
Twin-tone horn	●	●	●
Vanity mirror for the driver and front passenger	●	●	●
Warning triangle and first-aid kit integrated in luggage compartment box on the right	●	●	●
Window lifts, electric, front and rear, with fingertip control, opening function at the front and trap release	●	●	●

Optional equipment.



Light-alloy wheels in double-spoke styling.



Light-alloy wheels in streamline styling.



The on-board computer offers you a wide range of useful information, including average fuel consumption, range and even estimated arrival time.

● = Standard ○ = Not available on this model △ = Cost option N/C = No cost option

	318i	323i	328i
Airbag for front passenger	△	△	△
Automatic airconditioning with microfilter	△	△	△
Automatic air recirculation - only with air conditioning	△	△	△
Anti-theft warning system with remote control (infra-red transmitter)	△	△	△
Armrest at the front - available in Black, Dark Grey, Dark Beige depending on interior colour	△	△	△
Automatic transmission: - 4-speed EH automatic	△	○	○
- 5-speed EH automatic	○	△	△
Check/Control	○	△	●
Cruise control	△	△	△
Driver's and front passenger's seats electrically heated	△	△	△
Electric front seat adjustment	△	△	△
Front foglamps	△	●	●
Front side airbags	△	△	△
Full colour-coded bumpers	△	●	●
Fully automatic electric hood	△	△	●
Hardtop in matching body colour	△	△	△
Headlamp wash system	△	△	△
Heated drivers door lock and washer jets	△	●	●
HiFi loudspeaker system excludes radio Cassette/CD player	△	△	△
Lumbar support on driver's and front passenger's seats - not with sport seats	△	△	△
M sports steering wheel with airbag	△	△	△
M sports suspension - a firmer ride will be experienced with sports suspension	△	△	△
Metallic paintwork	△	△	△
Microfilter - included in air conditioning	△	△	△
Model designation, deleted	N/C	N/C	N/C
On-board computer V incl auxiliary ventilation	△	△	△
Outside temperature display - includes digital clock	△	△	△
Park Distance Control (PDC), rear only - not with towbar	△	△	△
Sports pack including: M Sports suspension, M steering wheel, aerodynamic body styling, clear indicator lenses, cloth/leather upholstery, alloy wheels - double spoke-style, BMW sports seats, anthracite headlining, front foglamps (318i)	△	△	△
Sports seats - not with lumbar support	△	△	△
Upholstery: - Cloth/leather combined - only with sports seat	△	△	△
- Montana leather	△	△	△
Wheels: - Light-alloy in double-spoke styling - 225/50 R 16 tyres	△	△	△
- Light-alloy in multi-spoke styling - 225/50 R 16 tyres	△	△	△
- Light-alloy in streamline styling - 205/60 R 15 tyres	△	△	△

Shown above are just a small number of the factory fitted options available from BMW. For full details please refer to the customer price list or your BMW dealer. To meet any further requests you may have, we offer a wide range of BMW accessories. For further information, please contact your BMW dealer

who will be glad to offer you helpful advice and a special accessories' brochure.

The models illustrated in this brochure show the specifications for the UK market. In part, they include optional equipment and accessories not fitted as standard. According to the specific require-

ments of other markets, alterations in models, standard and optional equipment, as described in the text and illustrations, may occur. For precise information on model features and the exact level of equipment, please contact your BMW dealer. Subject to change in design and equipment.

© BMW AG, Munich, Germany. Not to be reproduced, wholly or in part, without written permission of BMW AG, Munich.

Exterior colours.

Roof colours



388 Black
391 Dark Blue
392 Dark Green

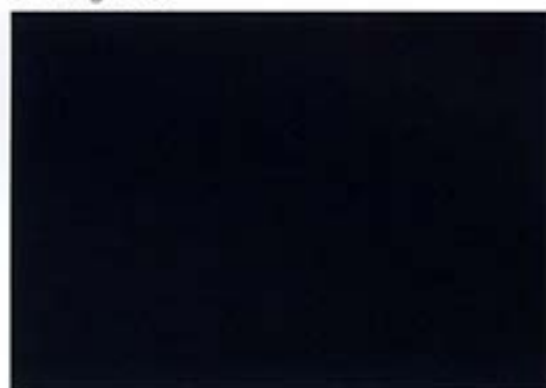
Non-metallic



300 Alpine White



314 Bright Red



263 Dark Blue



668 Jet Black

Metallic



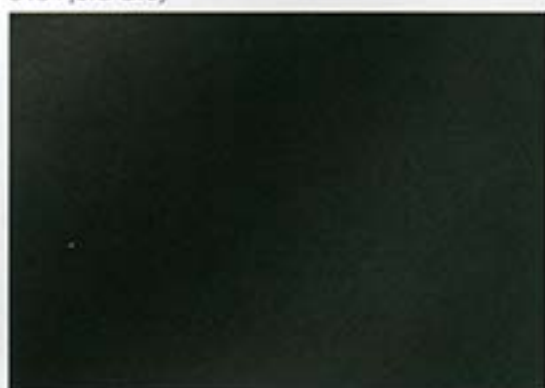
303 Cosmos Black



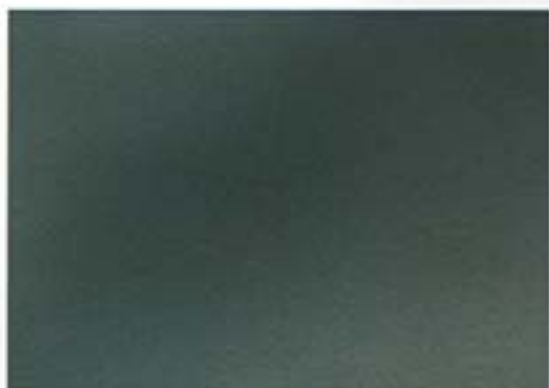
354 Titan Silver



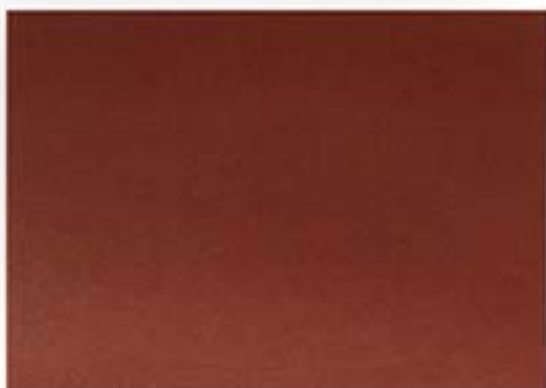
310 Fjord Grey



386 Fern Green



393 Sea Green



357 Sierra Red



372 Steel Blue



343 Canyon Red



317 Orient Blue



299 Techno Violet*



276 Avus Blue*

Roof colours



388 Black
391 Dark Blue
392 Dark Green

*Only available in conjunction
with sports pack.

Interior colours.



Cloth flat weave



Anthracite D6AT

Cloth/leather combined



Anthracite C1AT



Grey D6TT

Leather Montana



Beige P8SN/P7SN



Violet Blue P8MA/P7MA



Light Grey P8TH/P7TH



Saffron Yellow P8SG/P7SG




Black P8SW/P7SW



Exterior and interior colours.

Paintwork	Interior colours	Cloth		Cloth/leather combination**	Leather**		
		Anthracite	Grey	Anthracite	Black	Light-Grey	Beige
300 Alpine White		○1		○1	○1		○1
314 Bright Red		○1		○1	○1		
668 Jet Black		○1	○1	○1	○1	○1	○1
263 Dark Blue			○1			○1	○1
354 Titan Silver		○1	○1	○1	○1	○1	
386 Fern Green		●1/○3		●1/○3	●1/○3		○3
317 Orient Blue		●1/○2	●2	●1/○2	●1/○2	●2	●2
372 Steel Blue		○1		○1	○1		○2
393 Sea Green		●1		●1	●1		
303 Cosmos Black		○1	○1	○1	○1	○1	○1
343 Canyon Red		●1	○1	●1	●1	○1	
310 Fjord Grey		●1	○1	●1	●1	○1	
357 Sierra Red		●1	○1	●1	●1	○1	○1
276 Avus Blue*		○1/●2	○1/○2	○1/●2	○1/●2	○1/○2	
299 Techno Violet*		○1	○1	○1	○1	○1	
Roof colours		1	388 Black 	2	391 Dark Blue 	3	392 Dark Green 

Materials.

 Violet Blue	 Saffron Yellow
○2	
○1/○2	●1
●2	
○1/○2	●1

	Standard	Optional	
	Standard seats		Standard seats
	Sports seats*	Sports seats	Sports seats
	Cloth flat weave (Woven fabric)	Cloth/leather combination	Leather Montana
			
Anthracite	D6AT	C1AT	
			
Grey	D6TT		
			
Beige			P6SN P7SN**
			
Violet Blue			P6MA P7MA**
			
Saffron Yellow			P6SG P7SG**
			
Light-Grey			P6TH P7TH**
			
Black			P6SW P7SW**

Symbols with numbers specify the combination of paintwork/interior colours and roof colours. Example: Exterior colour 300 Alpine White, Interior colour Anthracite, Black or Violet Blue, Roof colour 1-Black or 2-Dark Blue.

- Recommended.
- Available.
- * Only available with sports pack.

Over and above the paintwork/roof/upholstery combinations shown, others are available on request. Light roof colours require extra care, especially at pressure points and when soiled. Experience shows that it is impossible to properly reproduce the exact colour of the

paintwork and upholstery on paper. We therefore advise you to inspect the original colours at your BMW dealer who will be glad to help.

- * Cost option.
- ** Order number for sports seats.

**We invite you to enter
the world of BMW.**

**Words and pictures are often not enough
to describe an outstanding car. Which
is why we would like to offer you the
opportunity to view and test drive the
BMW 3 Series Convertible by contacting
your nearest BMW dealer.**

**Further information can be found on
the Internet: <http://www.bmw.co.uk>**



The Ultimate Driving Machine