

The BMW 5 Series
Gran Turismo

www.bmw.co.uk



The Ultimate
Driving Machine




THE BMW 5 SERIES GRAN TURISMO.

UNPARALLELED JOY.

BMW EfficientDynamics
Less emissions. More driving pleasure.



official partner of the
Olympic and Paralympic Games

The image shows the interior of a car, focusing on the front seats and the sunroof. The seats are upholstered in a light-colored, textured leather. The sunroof is large and rectangular, with a black frame. The interior panels are a light beige color. The steering wheel is partially visible on the right side. The text is overlaid on the lower left portion of the image.

**WHEN WAS THE LAST TIME YOU
EXPERIENCED SOMETHING FOR
THE FIRST TIME?**

Contents

The BMW 5 Series Gran Turismo

- 04 | 09 Exterior
- 10 | 17 Interior
- 18 | 25 The first of its kind
- 26 | 31 Versatility

Technology

- 32 | 35 BMW EfficientDynamics
- 36 | 37 Engines
- 38 | 39 Chassis
- 40 | 43 BMW ConnectedDrive

Equipment

- 44 | 47 Colours
- 48 | 49 Combination examples
- 50 | 56 Standard | Optional equipment
 - 57 Genuine BMW Accessories
- 58 | 59 M Sport models
- 60 | 61 BMW Individual
- 62 | 67 Standard equipment | Technical data
- 68 | 69 London 2012 Olympic and Paralympic Games
- 70 | 71 BMW Service | BMW Financial Services



Fully adjustable and folding rear seats provide comfortable first class seating.



Dual tailgate for flexible loading.



BMW 530d SE

Equipment of model shown:

Engine: Six-cylinder in-line diesel
Max. output: 245hp (180kW)
Wheels: 20" light alloy
Double-spoke style 316
Exterior colour: Neptune Blue, metallic
Upholstery: Ivory White/Black Dakota leather
Interior trim: Fineline natural finish wood, unlacquered

For information on fuel consumption and CO₂ emissions please refer to pages 66 | 67.

**THE BMW 5 SERIES GRAN TURISMO.
THE FIRST OF ITS KIND.**





CHALLENGING CONVENTIONS. TYPICAL FOR BMW.

At BMW, conventional boundaries are continually challenged. It is a progressive mindset that drives innovation, with often groundbreaking results. Like nothing before it, the BMW 5 Series Gran Turismo unites the strengths of existing vehicles for which BMW is already world renowned. Combining the elegance and prestige of a luxury Saloon, the practicality of an Estate vehicle and versatility and spaciousness of a modern SAV, the Gran Turismo is the best of all worlds combined into one strikingly elegant and compellingly stylish BMW.



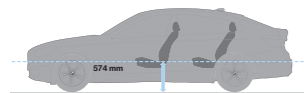
The BMW 5 Series Gran Turismo may be like nothing before, but it exudes a sense of instant familiarity. The resolutely focused front profile features the prominent and distinctive BMW Kidney grille. Elegant frameless doors, a BMW first on a five-door car, offer a welcoming invitation inside. The sweeping, Coupé-like roofline cleverly disguises the interior proportions and versatility. The strong shoulderline merges seamlessly into the rear, emphasising its powerful presence. Whatever your perspective, the Gran Turismo delivers dynamic authenticity and a truly captivating design.

**WHEN WAS THE LAST TIME YOU ENTERED A ROOM
FOR THE FIRST TIME AND FELT INSTANTLY AT HOME?**





A WELCOMING INVITATION.



The raised seating position makes for easy entry and exit. Exceptional all-round visibility inspires confidence and a feeling of security at the wheel.

The luxurious interior ambience of the BMW 5 Series Gran Turismo is emphasised by exquisitely crafted wood trims, high-quality leather and an abundance of natural light, thanks to the standard panoramic glass sunroof. Expertly engineered, intuitively placed controls and intricate details such as the seductive Black panel technology, all combine to create an air of cutting-edge sophistication.





SECOND ROW. FIRST CLASS TRAVEL.

The BMW 5 Series Gran Turismo is offered with two seating arrangements: The SE model has a five-seat configuration and models equipped with the Executive package benefit from a four-seat configuration. Both offer exceptional rear head and legroom – comparable to a BMW X5 and BMW 7 Series respectively – flexible luggage compartment arrangements and fully-folding, adjustable rear seats. Two individual comfort seats define the rear seating configuration provided with the Executive package featuring seat heating and electric seat adjustment as standard in all seats. All models benefit from Dakota leather upholstery and a BMW Professional Multimedia Navigation system as standard. As for entertainment, the Gran Turismo again excels with the optional BMW Professional rear seat entertainment system featuring 9.2" high-resolution screens integrated into the front seat backsrests.

Image (left) shows seats featured as part of Executive package – including two independent rear comfort seats with full electric seat adjustment and folding function. Images (right) show SE model with five-seat configuration.



At the maximum comfort setting, rear passengers enjoy generous legroom comparable to a BMW 7 Series. The luggage volume is 440 litres. A separate partition wall behind the seats insulates passengers thermally and acoustically from the luggage compartment.



To increase luggage compartment volume, the independent partition wall can be unlocked and adjusted in line with the backrest position of the rear seats. The seats can be moved forward up to a maximum of 100mm, which increases the luggage compartment volume to 590 litres.



A maximum luggage compartment volume of 1,700 litres is achieved when the seats are entirely folded down.



For total flexibility and to suit all personal requirements, the luggage compartment partition wall, seat backrests and seat base positions can all be adjusted independently. Backrests can be reclined up to 40 degrees.

**DO YOU STILL REMEMBER THE ANTICIPATION OF
YOUR VERY FIRST FLIGHT?**



MAKE EVERY DRIVE SUIT EVERY SITUATION.

Combining driving dynamics, superior comfort and efficiency at the highest level demands exceptional innovative vision. Such vision created the BMW 5 Series Gran Turismo. The perfect solution for individuals who want the prestige of a luxury Saloon, the practicality of an Estate vehicle and the versatility and spaciousness of a modern day SAV, this vehicle can adapt to all personal and lifestyle demands. A modern interpretation of an iconic GT, long-distance driving and relaxed cruising are at the heart of the Gran Turismo together with the ability to tailor the driving experience to the exact demands of the driver – whether that be refined cruising or a more sporty, enthusiastic drive. What is for certain however, as with all BMWs, an engaging and rewarding drive is part of its core.





**ISN'T THE PURPOSE OF EVERY JOURNEY
TO DISCOVER SOMETHING NEW?**

Beneath the Coupé-like roofline of the BMW 5 Series Gran Turismo, exists a host of innovations to discover. Beyond the luxuriously appointed passenger compartment and interior versatility, a superior level of standard equipment underpins each model including BMW's Eight-speed automatic transmission boasting performance and efficiency improvements, luxurious Dakota leather upholstery, Enhanced Bluetooth telephone functionality with telematics, a Panoramic glass sunroof for enhanced interior light and spaciousness and a BMW Professional Multimedia Navigation system. These standard innovations, to name only a few, further underline the refined and luxurious driving experience of the Gran Turismo for all passengers. For total personalisation, a multitude of options and packages can be selected to further tailor the Gran Turismo to your own bespoke requirements.

ANTICIPATE THE FIRST DRIVE.

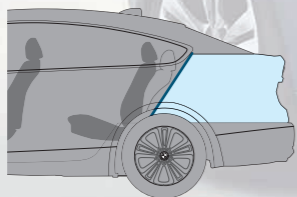




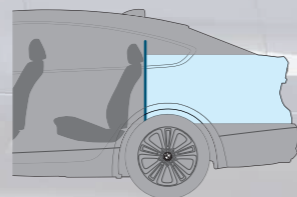
DYNAMICALLY VERSATILE.



Every day, a vehicle needs to satisfy a diverse range of demands. The BMW 5 Series Gran Turismo handles every challenge with surprising versatility. Beneath the rakish roofline, there is a superior level of practicality to be discovered. Providing flexible luggage capacity by means of a dual opening automatic tailgate, the Gran Turismo's versatility is endlessly accommodating. Everyday items can be loaded quickly and comfortably via the smaller boot lid beneath the rear window, also ensuring passengers are protected from the exterior elements.



With the rear seats adjusted for maximum legroom, the luggage compartment capacity is 440 litres.

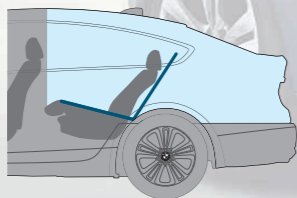


Capacity expands to 590 litres with the luggage compartment partition wall in the vertical position.

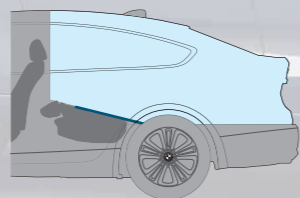




For those occasions when the transportation of more sizeable items is required, the larger tailgate can be utilised providing access to a luggage compartment capacity of 1,700 litres – comparable to a modern SAV. The unique and cleverly executed independent partition wall, neatly dividing the passenger compartment and the luggage area, adds a degree of further flexibility together with the luggage compartment cover which can be removed and cleverly stowed beneath the luggage compartment floor.



The rear backrests and partition wall feature a 40:20:40 configuration for total flexibility.



The maximum storage space of 1,700 litres is achieved by completely folding down the rear seat backrests and the dividing partition wall.





DISCOVER A VEHICLE DRIVEN BY IDEAS AND INNOVATIONS.

BMW EfficientDynamics

Less emissions. More driving pleasure.



BMW EFFICIENT DYNAMICS – MAKING A LITTLE GO A LONG WAY.

BMW has long been at the forefront of the automotive industry in pursuing efficient driving technologies as part of our multi-award winning sustainability strategy. BMW EfficientDynamics represents a comprehensive package of innovative technologies for reducing fuel consumption and emissions – whilst simultaneously increasing driving dynamics. Through these innovations the BMW Group has been able to reduce the CO₂ emissions of its entire fleet by approximately 30% since 1995. Currently 33 models produce less than 140g of CO₂ per kilometre and more than two million BMW vehicles have already been equipped with EfficientDynamics technologies. BMW intends to achieve a further 25% reduction in CO₂ emissions by 2020.

BMW EfficientDynamics – Takes so little, yet gives so much. Through tireless research, BMW is consistently producing innovations for the energy efficient mobility of the future. The BMW 5 Series Gran Turismo like every BMW, incorporates many aspects of the multi-award-winning BMW EfficientDynamics technology as standard. These technologies interact perfectly to reduce fuel consumption and CO₂ emissions while maximising performance and dynamism. Less fuel, more driving pleasure – a paradox that BMW has resolved once and for all. For the benefit of the environment and the enjoyment of the driver.



BMW EFFICIENT DYNAMICS TECHNOLOGY HIGHLIGHTS ON THE BMW 5 SERIES GRAN TURISMO.

High-precision direct injection. In this cutting-edge generation of petrol direct injection, the Piezo injectors are positioned very close to the spark plugs. They inject the fuel at high pressure and with extreme precision. The injectors' central positioning means only part of the combustion chamber needs to be filled with an ignitable petrol-air mixture, thus improving fuel consumption.

Brake Energy Regeneration. The alternator disengages automatically when the battery is fully charged, only re-engaging when the battery needs charging. This reduces the demands on the engine, reducing fuel consumption and emissions. In addition, when the car is braking or coasting, the system automatically engages the alternator to charge the battery, recycling energy that would otherwise be wasted.

Lightweight Engineering. Lightweight materials have been introduced across the BMW range to create lighter engines and bodywork. The new materials reduce drag, making the car more responsive and improve handling for a more involved drive. And of course, the lighter the car the less fuel used and the lower the CO₂ emissions.

Active Aerodynamics. An engine needs more fuel when starting from cold. So to help ensure every trip is as fuel efficient as possible, Active Aerodynamics automatically closes the air vents to help the engine reach its operating temperature faster. This also helps improve aerodynamics, reducing air resistance cutting fuel consumption even further. The vents are only opened again to allow air to flow through the engine when cooling is required.

Eight-speed automatic transmission. The close spacing of gear ratios in the eight-speed automatic transmission with Steptronic, enables maximum use of the optimum rev range, lowering fuel consumption and enhancing shift comfort.



The BMW 535d GT: Fuel consumption of 42.2mpg and 0 to 62mph in 6.1 seconds.

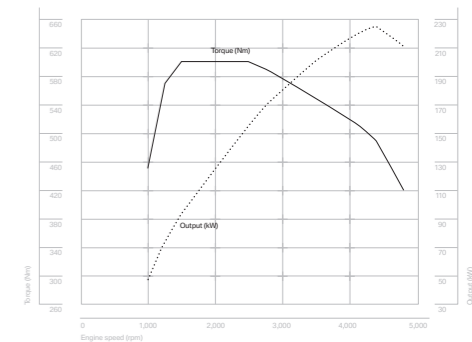
BMW EfficientDynamics
Less emissions. More driving pleasure.

GRAN TURISMO POWER

The BMW 5 Series Gran Turismo is equipped with an impressive choice of engines to take you effortlessly and efficiently on even the longest of journeys – in true GT tradition.

Pioneering diesel technology powers the **BMW 530d GT**. With an average fuel consumption of 43.5mpg* and an output of 245hp (180kW), the six-cylinder engine is outstandingly efficient. Maximum torque of 540Nm allows for effortless overtaking and turbocharger technology with variable turbine geometry sees the car sprint from 0 to 62mph in 6.9 seconds.

Sporty performance and outstanding efficiency are the hallmarks of the new **BMW 535d GT**. Underlying its impressive performance is the Twin-turbo engine, delivering peak torque of 600Nm at 1,500rpm, with a power output of 300hp (220kW). With BMW EfficientDynamics, the six-cylinder in-line engine accelerates from 0 to 62mph in just 6.1 seconds, yet delivers 42.2mpg* on the combined cycle.



With six cylinders and a Twin-turbo, the engine in the BMW 535d GT develops impressive torque and power. Along with smooth and quiet running in any rev range, it guarantees absolute comfort and control, together with outstanding efficiency.

The **BMW 535i GT** is powered by a six-cylinder in-line petrol unit with VALVETRONIC. This package of innovations enables a significant reduction of fuel consumption as well as impressive performance figures: 306hp (225kW), a maximum torque of 400Nm at the extremely low engine speed of just 1,200rpm, and powerful acceleration from 0 to 62mph in just 6.3 seconds.

The **BMW 550i GT** features the range-topping V8. Two parallel turbochargers serve up maximum torque of 600Nm between 1,750rpm and 4,500rpm, guaranteeing impressive power at all engine speeds. The High-precision direct injection, 407hp (300kW) V8 accelerates the BMW 5 Series Gran Turismo from 0 to 62mph in a phenomenal 5.5 seconds.

When it comes to fuel efficiency, driving performance and smooth running, this outstanding power transmission delivers the winning numbers. The **eight-speed automatic transmission** comes as standard and ensures an optimal engine speed at all times. Just the thing for sporty acceleration or efficient and comfortable low-speed cruising – and everything in between.

* For information on fuel consumption and CO₂ emissions please refer to pages 66 | 67.

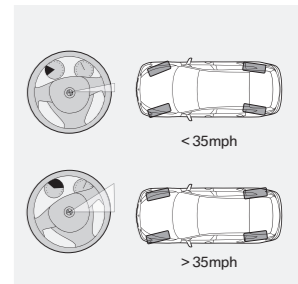


THE ONLY SENSATION YOU'LL GET FROM THE ROAD: DRIVING PLEASURE.

In the development of suspension and steering, BMW engineers pursue two seemingly contradictory goals: on the one hand, passengers should be protected from uneven road surfaces, but on the other hand, the driver must be able to feel direct contact with the road. It is this delicate balance that produces the unparalleled BMW driving sensation. Comfort and dynamics should never be mutually exclusive. Which is why we've been using the same proven design conventions for decades, such as the rear-wheel-drive and weight distribution of almost 50:50. In the BMW 5 Series Gran Turismo these typical BMW principles are combined with cutting-edge control systems and sophisticated suspension: The double-wishbone suspension reduces longitudinal and lateral forces at the front axle and simultaneously optimises contact with the road. In addition, the rear axle is fitted with self-levelling air suspension as standard. This automatically regulates the ground clearance and spring deflection, thereby guaranteeing passenger comfort, safety and agility – whatever the load.

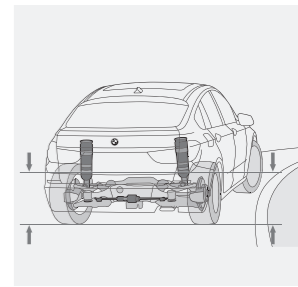
Integral Active Steering.

This system brings together the benefits of Active Steering and rear-wheel steering. Active Steering offers a variable steering ratio on the front wheels to ensure outstanding manoeuvrability and agility. At low speeds, the rear-wheel steering is able to turn in the opposite direction to the front wheels to significantly reduce the vehicle's turning circle, while at higher speeds the rear wheels steer almost imperceptibly in the same direction to help enhance vehicle stability and improve ride comfort.



Adaptive Drive.

This option combines active suspension control systems, Dynamic Drive and Variable Damper Control (VDC). The body roll through corners is minimised, allowing the driver to steer the BMW 5 Series Gran Turismo with unrivalled precision and agility. Key to this innovation are active antiroll bars on the front and rear axles. Minimising body roll also results in noticeable improvements in ride comfort.



Drive Performance Control.

Standard on all models, the characteristics of the BMW 5 Series Gran Turismo can be adjusted to any personal requirements at the touch of a button. Throttle response, transmission mapping and the level of steering assistance can be adjusted with three individual settings: Comfort, Sport and Sport+.





BMW CONNECTED DRIVE: INTELLIGENT NETWORKING OF DRIVER, CAR AND ENVIRONMENT.

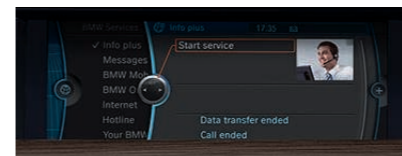
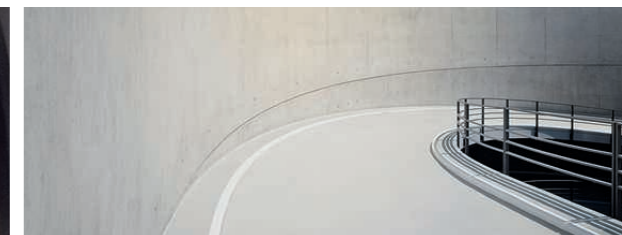
Our world is becoming more connected every day. BMW drivers are used to the fact that their vehicle and their world are connected – that they can request information, communicate via telephone or email and always be up to date while they're on the go. The BMW ConnectedDrive concept encompasses all the services and innovative technologies that network BMW vehicles and their passengers with the world outside, including the traffic around.

The next generation of automotive technology. The BMW Vision ConnectedDrive was developed to demonstrate how BMW ConnectedDrive technologies will continue to pioneer automotive innovations in the future. The concept was consciously designed as a roadster to allow optimal insight into the display and operation of future BMW ConnectedDrive features. Such features include a three-dimensional Head-up Display with Augmented Reality, vehicle-to-vehicle intelligent communication and a new Emotional Browser for sourcing relevant information on the surrounding environment. Three fibre optic light installations flow around the cabin to represent the key BMW ConnectedDrive areas of convenience, infotainment and safety. More information on this concept and future connected mobility projects can be found within our Future Lab.

www.bmw.com/futurelab



Convenience.



BMW Assist Information Plus. At the push of a button local information is available wherever you may be. The service connects you to a BMW operator who will be able to quickly access the information you need. You can request places of interest from hotels and restaurants, to museums or historical attractions. The information is then sent to your car and can then be used in your Navigation system to plan a route to your destination, or to make a call on your Bluetooth telephone. Information Plus is part of the optional BMW Assist package.



Surround-view, side-view and rear-view cameras. Surround-view offers the driver a bird's-eye-view of the area around the vehicle, shown in the Control Display. The rear-view camera provides a view of the area to the rear of the car. In addition, side-view cameras ensure better visibility when joining a main road from a side street or junction.

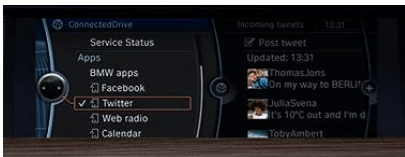
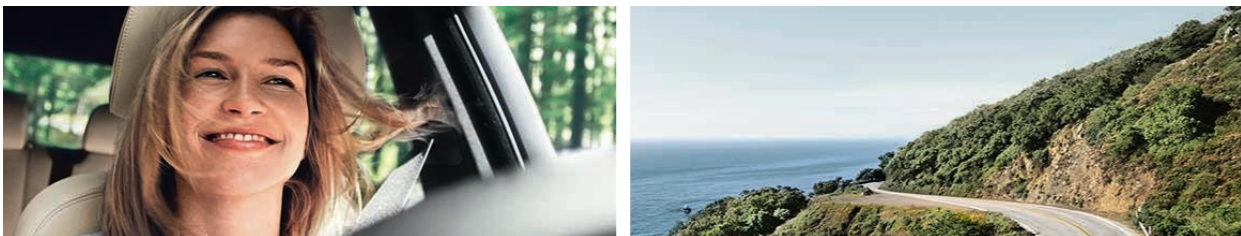


Speed limit display. Keeps the driver informed of the maximum permissible speed of the road being travelled. A camera 'reads' relevant signs above and beside the road, and compares the information with the speed limits recorded in the Navigation system. The speed limit is then displayed in the instrument cluster and the optional Head-up Display.



Real Time Traffic Information (RTTI). Provides a precise account of current traffic situations in real time. The information is presented on the Navigation map by using a colour coding system indicating the flow of traffic. Road networks are divided into distances as short as 500m for superior accuracy and dependency. Information is automatically updated every 3 minutes allowing the driver to monitor whether the traffic situation is improving or worsening. The system also recommends for or against alternative routes based on the potential time saving benefits.

Infotainment.



Mobile Application Preparation. With this optional feature, users can download the Mobile Application Preparation iPhone application free of charge. With this app you're no longer limited to listening to local radio. Using the iDrive system, you can select web radio stations from around the world. You can call up the latest status reports from your Facebook and Twitter accounts and view your iCalendar on the vehicle Control Display.



USB audio interface. With the USB audio interface and an original iPod USB cable, the album cover art for the track being played can be shown in the Control Display (the cover art display function is also available for other devices). The USB audio interface also allows the connectivity software in your BMW to be easily updated, so new compatible mobile phones and music players become fully operational after updating with a USB memory stick.¹



BMW Online. This online portal provides a range of current localised information inside your vehicle. The portal features daily news and sports headlines as well as weather forecasts. You can also access a Google search engine to locate points of interests and transfer details directly into the Navigation system. BMW Online is part of the optional BMW Assist package.



Internet. In-car browsing of the World Wide Web is now available with the optional Internet feature. Websites are displayed in the high resolution vehicle Control Display with the iDrive controller doubling as a mouse for on-screen navigation. The connection operates via the built-in vehicle SIM card and thus no external mobile device is required for operation. All data costs for a three year term are included as part of the optional BMW Assist package. The Internet service is only available when the vehicle is stationary.

¹ For information on software updating see www.bmw.com/update

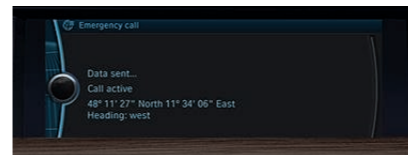
Safety.



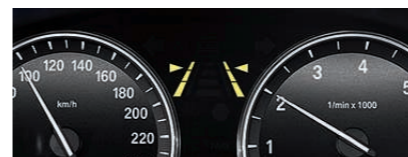
Night Vision with pedestrian recognition. An infrared camera in the front grille detects people and animals up to a distance of 300 metres. The camera images are shown in the Control Display. Pedestrian recognition also gives a visual warning to indicate any people moving close to the road, enabling the driver to recognise potential dangers sooner and take more timely action.



Full colour Head-up Display. A full colour TFT display projects important driving information onto the windscreen, in your direct field of vision. The information displayed includes the current road speed, or navigation instructions. The availability of more colours makes it easier to distinguish general driving information and warnings. The display ensures that your eyes are always on the road ahead for a safer driving experience.



Emergency 999 SOS call. Known as BMW eCall, this service provides a direct link to the 999 Emergency Services. You can summon help manually by simply pressing the SOS emergency call button to arrange for assistance. Additionally, if your vehicle is involved in a more serious accident an automatic emergency call is made, providing extra reassurance that if you cannot call for help, the vehicle will on your behalf. With either the manual or the automatic Emergency SOS call, details of your vehicle and location will be sent directly to a 999 Emergency Service Centre, so that immediate action can be taken and assistance dispatched without delay. The Emergency 999 SOS call is part of the optional BMW Assist package.

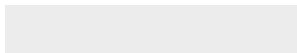


Lane departure warning system. At speeds above approximately 40mph, the Lane departure warning system registers lane markings ahead, up to a distance of 50 metres. If the vehicle deviates from the lane of travel without the use of indicators the steering wheel vibrates as an alert to the driver.

Certain BMW ConnectedDrive features are optional dependant on the model and options chosen. Screens and Services may differ in the UK. BMW Assist services require a connection to a UK mobile telephone network and are not available on the Isle of Man, Channel Islands or in the Republic of Ireland. Some services are available in other European countries, please refer to your local BMW Dealer for more information.

■ Standard equipment □ Optional equipment

Exterior colours.



□ 300 Alpine White, non-metallic



□ 668 Jet Black, non-metallic



■ 475 Black Sapphire, metallic¹



■ 354 Titanium Silver, metallic



■ A52 Space Grey, metallic



■ A92 Orion Silver, metallic¹



■ A76 Deep Sea Blue, metallic¹



■ A85 Neptune Blue, metallic¹



■ B03 Damask Red, metallic



■ A84 Milano Beige, metallic¹



■ A89 Imperial Blue, xirallic



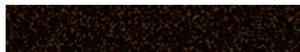
■ B90 Sophisto Grey II, xirallic



□ 416 Carbon Black, metallic¹



BMW Individual



□ BMW Individual X02 Citrine Black, metallic



□ BMW Individual X08 Champagne Quartz, metallic

The following pages show the colours and materials available for the BMW 5 Series Gran Turismo. You can use them to identify your favourite colours, or compare various possible combinations. These colour samples are designed to give you a first impression. Experience has shown however, that the printed versions of paint and upholstery colours cannot in all cases faithfully replicate the precise shade of the paintwork and upholstery. We therefore recommend that you consult your BMW Dealer on your preferred colour choices. They will be happy to show you larger samples and assist you with your choices.

Upholstery colours.



■ LCSW Black, Dakota leather



■ LCDE Everest Grey, Dakota leather



■ LCDF Venetian Beige, Dakota leather



■ LCEW Ivory White/Black, Dakota leather



■ LCEZ Ivory White/Ivory, Dakota leather



■ LCEZ Cinnamon Brown/Black, Dakota leather



□ NAEW Ivory White/Black, Exclusive Nappa leather²



□ NAEZ Cinnamon Brown/Black, Exclusive Nappa leather²



□ NASW Black, Exclusive Nappa leather²



BMW Individual



□ BMW Individual Extended Merino Leather ZAC8 Platinum³



□ BMW Individual Extended Merino Leather ZAP5 Amaro Brown³

¹ Not available on M Sport models.

² Only available on M Sport models.

³ Only available in combination with option 456, Comfort seats, front.

■ Standard equipment □ Optional equipment

Interior colours.



Black



Everest Grey



Venetian Beige



Ivory White

Interior trims.



■ 4CG Satin Silver¹



□ 4B5 Light Ash-grain wood, High-gloss



□ 4BN Dark Ash-grain wood, High-gloss²



□ 4CA Anthracite Ash-grain wood, High-gloss



□ 4CB Fineline natural finish wood, un-lacquered



□ 4L7 Palladium Grey³



BMW Individual



□ BMW Individual Interior trim XE9 Platinum



□ BMW Individual Interior trim XE9 Amaro Brown

Combinations.

Upholstery material	BMW upholstery colours									BMW Individual upholstery colours	
	Dakota leather ¹						Exclusive Nappa leather			BMW Individual Extended Merino Leather	
Standard seats	•	•	•	•	•	•	•	•	•	•	•
Sport seats	•	•	•	•	•	•	•	•	•	•	•
Comfort seats	•	•	•	•	•	•	•	•	•	•	•
Upholstery colours	Black	Everest Grey	Venetian Beige	Ivory White	Ivory White	Cinnamon Brown	Ivory White	Cinnamon Brown	Black	Platinum	Amaro Brown
Interior colours	Black	Everest Grey	Venetian Beige	Black	Ivory White	Black	Black	Black	Black	Black	Black
Exterior colours		•	•	•	•	•	•	•	•	•	•
300 Alpine White, non-metallic	•	•	•	•	•	•	•	•	•	•	•
668 Jet Black, non-metallic	•	•	•	•	•	•	•	•	•	•	•
475 Black Sapphire, metallic	•	•	•	•	•	•	•	•	•	•	•
354 Titanium Silver, metallic	•	•	•	•	•	•	•	•	•	•	•
A52 Space Grey, metallic	•	•	•	•	•	•	•	•	•	•	•
A92 Orion Silver, metallic	•	•	•	•	•	•	•	•	•	•	•
A76 Deep Sea Blue, metallic	•	•	•	•	•	•	•	•	•	•	•
A85 Neptune Blue, metallic	•	•	•	•	•	•	•	•	•	•	•
B03 Damask Red, metallic	•	•	•	•	•	•	•	•	•	•	•
A84 Milano Beige, metallic	•	•	•	•	•	•	•	•	•	•	•
A89 Imperial Blue ² , xirallic	•	•	•	•	•	•	•	•	•	•	•
B90 Sophisto Grey II, xirallic	•	•	•	•	•	•	•	•	•	•	•
416 Carbon Black, metallic	•	•	•	•	•	•	•	•	•	•	•
BMW Individual Exterior colours											
X02 Citrine Black, metallic	•	•	•	•	•	•	•	•	•	•	•
X08 Champagne Quartz, metallic	•	•	•	•	•	•	•	•	•	•	•
Interior trims											
4CG Satin Silver ¹	•	•	•	•	•	•	•	•	•	•	•
4B5 Light Ash-grain wood, High-gloss	•	•	•	•	•	•	•	•	•	•	•
4BN Dark Ash-grain wood, High-gloss ²	•	•	•	•	•	•	•	•	•	•	•
4CA Anthracite Ash-grain wood, High-gloss	•	•	•	•	•	•	•	•	•	•	•
4CB Finesline natural finish wood, un-lacquered	•	•	•	•	•	•	•	•	•	•	•
4L7 Palladium Grey ³	•	•	•	•	•	•	•	•	•	•	•
BMW Individual Interior trims											
XE9 BMW Individual Leather Platinum	–	–	–	–	–	–	–	–	–	•	•
XE9 BMW Individual Leather Amaro Brown	–	–	–	–	–	–	–	–	–	•	•

– Not available • Available

The above table shows all available exterior and upholstery colour combinations. For more information on how your preferred combinations will appear, please refer to the "Build your BMW" section of the www.bmw.co.uk website, or consult your local BMW Dealer.

¹ Not available on M Sport models.

² Standard on 550i GT.

³ Only available on M Sport models.

⁴ Dakota leather includes seat surfaces, armrests in centre console and doors, head rests for front seats and outside rear seats, gear lever and handbrake gaiters.



SPORTING ELEGANCE.

The Black Sapphire metallic paintwork emphasises the exclusive elegance of the BMW 5 Series Gran Turismo and is powerfully complimented by 19" light alloy Y-spoke style 315 wheels. Inside, Cinnamon Brown Dakota leather upholstery is in perfect harmony with the Dark Ash-grain wood interior trim.

The BMW 5 Series Gran Turismo exudes modernity with its discreet Orion Silver metallic paintwork – set off by 19" light alloy Multi-spoke style 235 wheels. This sense of lightness continues seamlessly into the interior. The Ivory White Dakota leather upholstery together with the Anthracite Ash-grain wood trim create an atmosphere of unparalleled luxury.

**EFFORTLESSLY
STYLISH.**



■ Standard equipment □ Optional equipment



■ **Xenon headlights** for high and low beam, includes automatic headlight range control and headlight washing system, provide significantly improved illumination of the road ahead at night, in bad weather and when visibility is poor.

□ **524 Adaptive Headlights** with variable light distribution. The integrated cornering lights are activated whenever the indicator is switched on, or automatically according to the steering angle.

□ **5AC High-beam Assistant** helps the driver at night by automatically switching between high or low beam according to the oncoming traffic, vehicles driving in front and the quality of road lighting.



■ **Panoramic glass sunroof** with generous dimensions for maximum interior light, featuring a speed-dependent wind deflector. The front glass section can be raised electronically or fully opened via sliding function. Includes sliding roof liner, comfort closing and anti-trap functions.



□ **322 Comfort Access system** to lock and unlock the vehicle without direct operation of the remote control key. Includes Chrome door handle inserts.

□ **323 Soft-close doors** for the gentle closing of all four doors via electric function. Electric motor completes the final 6mm of closing.



Tailpipes: The 530d GT features a distinct twin Chrome tailpipe, fitted on the left.



Tailpipes: The 550i GT features two individual quadrilateral Chrome tailpipes, one left and one right.



Tailpipes: The 535i GT and 535d GT models feature two individual Chrome tailpipes, left and right.



□ **2SR 18" light alloy Double-spoke style 234**
8J x 18 with 245/50 R18 run-flat tyres (standard on 535i SE, 530d SE and 535d SE).



□ **2AF 18" light alloy Turbine-spoke style 271**
8J x 18 with 245/50 R18 run-flat tyres.



□ **2SW 19" light alloy Star-spoke style 272**
with mixed tyres, 8.5J x 19 wheels and 245/45 R19 run-flat tyres at the front, 9.5J x 19 wheels and 275/40 R19 run-flat tyres at the rear (standard on 550i SE).



□ **2ST 19" light alloy Multi-spoke style 235**
with mixed tyres, 8.5J x 19 wheels and 245/45 R19 run-flat tyres at the front, 9.5J x 19 wheels and 275/40 R19 run-flat tyres at the rear.



□ **2LG 19" light alloy Y-spoke style 315**
with mixed tyres, 8.5J x 19 wheels and 245/45 R19 run-flat tyres at the front, 9.5J x 19 wheels and 275/40 R19 run-flat tyres at the rear.



□ **2BX 20" light alloy Double-spoke style 253**
with mixed tyres, 8.5J x 20 wheels and 245/40 R20 run-flat tyres at the front, 10J x 20 wheels and 275/35 R20 run-flat tyres at the rear.



□ **2B2 20" light alloy Double-spoke style 316**
with mixed tyres, 8.5J x 20 wheels and 245/40 R20 run-flat tyres at the front, 10J x 20 wheels and 275/35 R20 run-flat tyres at the rear.



■ **Multi-function leather steering wheel** allows the driver to operate a large number of functions conveniently and without being distracted from the road ahead. The left-hand buttons are used to operate all Cruise control functions, while those on the right serve the audio functions, such as the radio, telephone and Voice Control.



□ **255 Sport multi-function leather steering wheel** sits comfortably in the driver's hands thanks to its small diameter and firmer, sportier grip. The integrated buttons allow convenient and safe operation of the telephone, voice and audio functions, as well as Cruise control.

□ **248 Steering wheel heating:** The rim heats up quickly at the touch of a button – especially pleasant in winter.



■ **Eight-speed automatic transmission** with electronic gear selection and Adaptive Transmission Management enables fast and comfortable gear shifting – for maximum driving dynamics and efficiency.

■ **Drive Performance Control** enables the driver to select one of three modes from Comfort, Sport to Sport+. The most appropriate configuration to suit individual requirements can be selected.



□ **4U1 Ceramic surround for controls**, including the iDrive controller, loudspeaker system controls and gear selector lends the interior a uniquely contemporary finish and maintains a comfortable temperature even in direct sunlight.



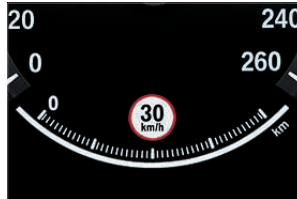
■ **Black panel technology** shows the displays in the instrument cluster as a Matt Black surface when the ignition is switched off. Only the Chrome rings of the circular instruments (open at the bottom) are visible in 3D. When the doors are opened, the Chrome rings join at the bottom and the dials and displays are shown. Then, when the ignition is switched on, the trip computer and Check Control information light up.



□ **4NB Automatic air conditioning with four-zone control:** The climate of both the front and rear compartments can be controlled separately allowing the driver and three passengers to tailor the temperature to their individual preferences. Standard on 535d and 550i models.



□ **610 Full colour Head-Up Display**, a full colour TFT display projects important driving information onto the windscreen, in your direct field of vision. The information displayed includes the current road speed, or navigation instructions. The availability of more colours makes it easier to distinguish general driving information and warnings. The display ensures that your eyes are always on the road ahead for a safer driving experience.



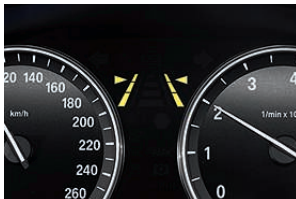
□ **8TH Speed limit display*** keeps the driver informed of the maximum permissible speed of the road being travelled. A camera 'reads' relevant signs above and beside the road, and compares the information with the speed limits recorded in the Navigation system. The speed limit is then displayed in the instrument cluster and the optional Head-Up Display.



□ **5DF Active Cruise Control with 'Stop and Go' function**. For added convenience and active safety in stop and go traffic. The system measures the gap to the vehicle ahead on an ongoing basis and automatically maintains an appropriate distance. Once the lane ahead becomes free, the system accelerates again up to the desired speed.



■ **BMW Professional Multimedia Navigation system** with high-resolution 10.2" colour display, includes DVD drive, integrated hard disc for storage of audio files transferred from CDs, MP3 players or USB sticks, as well as dynamic route planning, 3D route map and split-screen function.



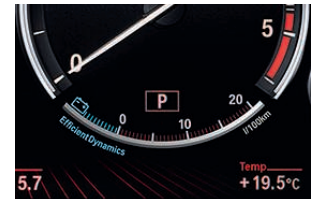
□ **5AD Lane departure warning system**
At speeds above approximately 40mph, the Lane departure warning system registers lane markings ahead, up to a distance of 50 metres. If the vehicle deviates from the lane of travel without the use of indicators the steering wheel vibrates as an alert to the driver.



□ **5AG Lane change warning system:**
When the indicator is switched on to signal the intention to change lanes, this system recognises a vehicle in the driver's blind spot or a vehicle approaching at high speed in the overtaking lane and warns the driver by sending a mild vibration through the steering wheel as well as through a visible signal in the exterior mirror casing.



□ **3AG Reversing Assist camera** shows the area behind the vehicle in the Control Display.
□ **5DL Surround view** includes Top-view and Side-view cameras. Top-view consists of two video cameras which provide a "bird's-eye view" of the area to the side of the car. Side-view consists of two video cameras, one at each side of the front bumper and permits an early view of approaching traffic when exiting junctions with restricted visibility.



■ **BMW EfficientDynamics display:** As soon as the driver brakes or stops accelerating, the kinetic energy made available is transformed by Brake Energy Regeneration into electrical energy and fed into the battery. This charging process is indicated by a symbol in the rev counter.

* Please note that Speed limit display is an aid to driver memory only, it is not possible to guarantee system recognition of all permanent and temporary speed limit signs. It remains the responsibility of the driver to recognise speed limits, operate within existing road laws and drive in a manner appropriate to weather and traffic conditions.

■ Standard equipment □ Optional equipment



□ **6UK Night Vision with pedestrian recognition** uses an infrared camera to detect people and animals up to a distance of 300 metres and transfers the images directly onto the Control Display. The pedestrian recognition system (operable at distances of up to 100 metres) sends an audible warning to the driver in the event of a potential hazard.



In combination with **Night Vision** with pedestrian recognition, a thermal imaging camera is integrated into the twin kidney grilles. The sides of the kidney grille slats are Black.



□ **6NF Telephone USB audio interface** includes an additional connection point for the playback of music from a mobile phone with a built in music player. For further information on compatible handsets and the availability of the cradle which will need to be purchased separately, please consult www.bmw.co.uk/bluetooth.

□ **6NR Mobile Application Preparation**. With this optional feature, users can download the Mobile Application Preparation iPhone application free of charge. With this app you're no longer limited to listening to local radio. Using the iDrive system, you can select web radio stations from around the world. You can call up the latest status reports from your Facebook and Twitter accounts and view your iCalendar on the vehicle Control Display.



■ **USB audio interface** with extended functions. In conjunction with the original Apple iPod™ USB cable, the album cover for the current song can be shown in the Control Display. This "Cover Art" display adds the cover for each song and album – for fast and convenient reference (this function is also available for other devices).



□ **6FH Rear seat entertainment BMW Professional** includes two separate tiltable 9.2" colour screens, DVD drive; provides access to the vehicle's entertainment systems and navigation whilst driving; remote controlled, connections for MP3 players, game consoles and includes two sets of headphones.

□ **6FG Rear seat entertainment BMW Business** includes two tiltable 8.0" colour screens and a DVD drive; remote controlled, connections for MP3 players, game consoles and includes two sets of headphones.



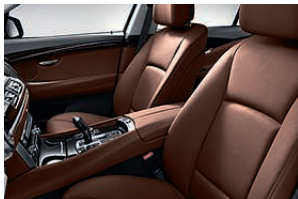
□ **601 TV function** allows the Control Display to be used as a television when the car is stationary. The TV function receives terrestrial analogue and digital programmes – DVB-T.



□ **676 Business loudspeaker system** with digital amplifier and 12 loudspeakers.

□ **677 Professional loudspeaker system** uses a digital amplifier with 600 watt output and a total of 16 loudspeakers to deliver a sound experience of maximum intensity.

■ **BMW Professional radio**, four channel amplifier, two tuner reception, aerial diversity, scan function, CD player, MP3 playback facility.



■ **Standard seats for driver and front passenger.**

■ **Seat adjustment, electric**, with memory function for driver. Includes electrically adjustable steering column and 'kerb-view' function for passenger wing mirror.



□ **456 Comfort seats** for driver and front passenger, individually multi-adjustable electric seats with adjustment for lower and upper sections of backrest, headrest, angle of seat base, thigh support, lumbar support and memory function.

■ **Seat heating** for driver and front passenger seats. Seat surfaces and backrests feature three heating levels.



□ **481 Sport seats for driver and front passenger**, have raised side sections to provide optimum side support with part-electric adjustment of seat height, backrest angle and manual adjustment of thigh support. Includes anti-whiplash head restraints (Standard on M Sport models).



■ **Rear central armrest**, contains two cup holders and a storage compartment.



□ **4UYSki bag** allows clean and secure transportation of up to four pairs of skis while up to four people are travelling in the car.



■ **Ambient Lighting** illuminates and creates ambience in the cockpit. Includes rear reading and footwell lights and illuminates the storage compartment in the front centre console, all door pockets, the back of the front seats, the sides of the rear centre console and also includes vicinity lighting in the door handles and door sill finishers illumination.



■ Standard equipment □ Optional equipment



Part of the **Executive package** features two independent rear comfort seats with full electric adjustment of lower and upper sections of backrest, headrest, angle of seat base, thigh support and lumbar support. Fixed rear centre console features a storage compartment and two cup holders.



■ **SE and M Sport models**, featuring three rear seats with manually adjustable backrests and seat base positions. Adjustable in 40:60 configuration regarding seat base and 40:20:40 for seat backrests.



□ **453/454 Seat ventilation** ensures a pleasantly cool seat temperature in summer to significantly increase comfort; vents in the seat surfaces and backrests blow air through the perforated upholstery.



Rear seat adjustment controls in luggage compartment: Backrest inclination and seat distance from the luggage compartment can be individually electronically adjusted from the luggage compartment.



□ **416 Sunblinds, electric** for the rear side windows regulate direct sunlight in the cabin.



□ **BMW Service Inclusive.** Service costs are another area where your BMW Dealer can offer you an intelligent solution. BMW Service Inclusive, covers all your vehicle's servicing requirements for a specified period. Terms and Conditions apply, find out more online at www.bmw.co.uk/serviceinclusive

EQUIPPED WITH ALL THE BEST IDEAS. GENUINE BMW ACCESSORIES.



Rear carrier, lockable; 21" Star-spoke style 311 wheels.

We don't have to tell you how to travel in style, but we can tell you how to make it even more pleasurable: with Genuine BMW Accessories. Combining outstanding ideas, fascinating design and exemplary functionality to create innovative solutions, Genuine BMW Accessories provide a wide range of equipment for exterior, interior, mobile communication, versatility, safety and security, car care and lifestyle. For instance, the 21" Star-spoke style 311 wheels, which add

powerful and commanding emphasis to the appearance of the BMW 5 Series Gran Turismo. Genuine BMW Accessories are amongst many options available that will enhance your vehicle and make it more personal. For further information or a brochure, contact your local BMW Dealer.

www.bmw.co.uk/accessories



Sunblinds, fast and easy mounting on the rear window and rear side windows.



Infrared stereo headphones, designed to optimally integrate with the optional DVD system in the rear.



Reversible luggage compartment mat

■ Standard equipment □ Optional equipment



RACING PEDIGREE. IN EVERY DETAIL.



■ 2NW 19" light alloy V-spoke style 302M with mixed tyres, front 8.5 J x 19 with 245/45 R19 tyres, rear 9.5 J x 19 with 275/40 R19 tyres.



□ 2NX 20" light alloy Double-spoke style 303M with mixed tyres, front 8.5 J x 20 with 245/40 R20 tyres, rear 10 J x 20 with 275/35 R20 tyres.



□ **M Sport models** can really show off the sporty side of the BMW 5 Series Gran Turismo. It's potent exterior design is emphasised by the Carbon Black metallic paintwork (exclusive to M Sport models) and the 19" V-spoke style 302M wheels (also optionally available with 20" Double-spoke style 303M wheels, shown above), the M aerodynamic bodystyling features and the High-gloss Shadowline exterior trim. Dark Chrome exhaust tailpipes perfectly round off this dynamic look.



■ **M Sport multi-function leather steering wheel** features special thumb rests and a thicker rim for extra grip.



The **interior** welcomes the driver and front passenger with Sport seats that provide great support, particularly around bends. The Palladium Grey interior trim and Anthracite headlining eloquently complement the interior's sporty look.



The **M door sill finisher** with Chrome insert and M logo is a welcome invitation.

□ Optional equipment

BMW Individual. The most exclusive way to drive a BMW.

True exclusivity is defined by the very highest standards: those that each person sets for themselves. BMW Individual enables you to realise these standards in the car you drive.

□ The BMW 5 Series Gran Turismo, shown here in BMW Individual Citrine Black metallic showcases the characteristic iridescence of the paint finish which at first appears dark, but once exposed to sunlight reveals a myriad of minuscule pigments, shimmering discreetly in hues ranging from Yellow to Dark Brown. Like other BMW Individual paint finishes, Citrine Black owes its extraordinary intensity to its advanced pigment. The BMW Individual extended Merino leather with its exquisite, natural surface texture makes for maximum exclusivity, with a soft, velvety feel and breathable structure, while the striking Platinum shade creates an elegant contrast to the Black piping and Anthracite headlining, displaying immaculate craftsmanship.



Experience BMW Individual interactive with the BMW Individual iPad App.

BMW Individual Citrine Black, metallic.





Tailgate finisher with 'BMW Individual' designation.



BMW Individual extended Merino leather upholstery in Platinum with leather interior trim.



Door inserts in Platinum leather.



BMW Individual extended Merino leather upholstery in Platinum with Black contrast piping.

530d SE	
Engine	Catalytic converter
	Common-rail injection system
	Diesel Particulate Filter (DPF)
	Digital Diesel Electronics (DDE)
	Engine mounts, hydraulically controlled
	EUS emissions management
	Oil sensor for level and grade
	Six-cylinder in-line diesel engine with common-rail technology
	Turbo
Transmission	Eight-speed automatic transmission
Wheels and chassis	18" light alloy Double-spoke style 234 with Run-flat tyres
	Brake callipers – Aluminium, front and rear
	Disc brakes – front and rear, ventilated
	Double-wishbone suspension, front
	Drive Performance Control with Comfort, Sport and Sport+ modes
	Electro-mechanical parking brake with auto-hold function
	Integral rear axle, aluminium
	Self-levelling air suspension, rear
	Servotronic power steering
Safety and technology	Airbags comprising:
	– Advanced Head Protection System (AHPS II), front and rear
	– Crash sensor activating central locking release, hazard warning lights, fuel cut-off, interior lighting and safety battery terminal
	– Driver, front passenger, front and side
	– Impact-dependent airbag system (iD airbags), driver and front passenger
	– Passenger seat airbag deactivation, front
	– Passenger seat occupancy sensor, front
	Alarm system (Thatcham 1) with remote control and engine immobiliser
	Brake Force Display
	Check control warning system
	Child locking system, rear doors
	Condition Based Servicing (CBS)
	Cruise control with brake function
	Deformation zones – front and rear, that can absorb impacts of up to 9.5mph. Bumpers absorb impacts up to 2.5mph without damage
	Dynamic Stability Control Plus (DSC+) comprising:
	– Anti-lock Braking System (ABS)
	– Automatic Stability Control (ASC)
	– Brake drying
	– Brake fade compensation
	– Cornering Brake Control (CBC)
	– Dynamic Brake Control (DBC)
	– Dynamic Traction Control (DTC)
	– Electronic Brake-force Distribution (EBD)
– Hill-start assistant	
– Soft-stop	

530d SE		
Safety and technology (continued)	First Aid kit and warning triangle	
	Foglights, front and rear	
	Head restraints – front, anti-whiplash	
	Headlight range control, electric	
	Headlight wash	
	Incorrect fuelling protection system	
	Keyless starting of engine ignition	
	On-Board Diagnosis (OBD)	
	Park Distance Control (PDC), front and rear	
	Rain sensor with automatic headlight activation	
	Run-flat tyres with Tyre Puncture Warning System (TPWS)	
	Seat belts – front, inertia reel with pyrotechnical belt latch tensioner, belt force limiter and belt restrainer	
	Seat belts – rear, three with inertia reel	
	Side impact protection	
	Windscreen washer jets, heated	
	Xenon headlights	
	Seats	Child seat ISOFIX attachment, rear
Dakota leather upholstery		
Five seat arrangement		
Seat heating, front		
Standard seats – front, electric adjustment with driver memory		
Standard seats – rear, manual adjustment		
Exterior equipment		All round anti-corrosion system with partial hot galvanising, phosphate treatment and cathodic dip paintwork, preservation of hollow cavities, underfloor protection
	Door handle illumination	
	Exhaust tailpipes – twin, chrome	
	Exterior mirrors – folding, automatically dimming, aspheric, heated, with electric adjustment	
	Exterior parts in body colour – bumpers, side sills, door handles, exterior mirror housing	
	Exterior trim, Chromeline	
	Indicator lenses, clear	
	Kidney grille, chrome with chrome-fronted and black-sided vertical slats	
	Metallic paintwork	
	Shark-fin aerial	
	Tailgate, dual opening with automatic operation and soft-close	
	Interior equipment	Air conditioning, automatic with extended features
		Ambient interior lighting
Armrests – front and rear, centre with storage compartments		
Battery in luggage compartment with jump start facility in engine bay		
Black panel display, full		
Courtesy lights, front and rear with soft on/off dimming		
Cup holders, front and rear		
Door sill finishers with BMW designation, illuminated		
Electric windows – front and rear, with open/close fingertip control, anti-trap facility and comfort closing function all round		
Floor mats, velour		
Fogging sensor, front windscreen		

530d SE**Interior equipment (continued)**

Footwell lights, front and rear
Glove box
Interior trim, Satin Silver
Luggage compartment comprising:
– 12V socket
– Compartment cover, removable (can be stowed under load-floor)
– Compartment with electric unlocking via the key's remote control
– Luggage compartment release button in A-pillar
– Securing rings in luggage compartment, four
– Securing straps in luggage compartment, two
Multi-function controls for leather steering wheel
Panoramic glass sunroof
Power sockets, two 12V, front
Reading lights, front and rear
Rear-view mirror, automatically dimming
Smoker's package
Start-Stop button
Steering column with manual reach and rake adjustment
Sun visors with illuminated vanity mirrors
Toolkit located in luggage compartment
Windows – heat-insulated, green-tinted all round

Audio and communication

Auxiliary input for auxiliary playing devices
BMW Assist
BMW Assist online
BMW Professional radio with single CD player (with MP3 playback facility)
Control Display – 10.2" colour display screen
Enhanced Bluetooth telephone functionality with telematics
Favourite buttons
iDrive Controller with shortcut buttons
Loudspeaker system with six speakers
Navigation system – BMW Professional Multimedia
On-Board Computer (OBC) comprising:
– Average speed
– Fuel consumption and range
– Information display – analogue instruments combined with liquid crystal display
– Journey computer
– Outside temperature display
Personal Profile
USB audio interface
Voice Control

535d SE	
Equipment in addition/replacement to 530d SE	Air conditioning, automatic with four-zone control
	Exhaust tailpipes – single, left and right, Chrome
	Twin-turbo
535i SE	
Equipment in addition/replacement to 530d SE	Digital Motor Electronics (DME)
	Double-VANOS
	Exhaust tailpipes – single, left and right, Chrome
	Six-cylinder in-line petrol engine with High-precision direct injection and Valvetronic
	Turbo
550i SE	
Equipment in addition/replacement to 530d SE	19" light alloy Star-spoke style 272 with Run-flat tyres
	Air conditioning, automatic with four-zone control
	Dark Ash-grain wood, High-gloss
	Digital Motor Electronics (DME)
	Double-VANOS
	Exhaust tailpipes – single, left and right, Chrome, quadrilateral
	Kidney grille, Chrome with fully Chrome vertical slats
	Steering column with electric reach and rake adjustment, with memory
	Twin-turbo
	V8 engine with High-precision direct injection
M Sport Models	
Equipment in addition/replacement to all models	19" light alloy M V-spoke style 302M with Run-flat tyres
	Door sill finishers with M designation
	Exhaust tailpipes – Dark Chrome
	Exterior trim, High-gloss Shadowline
	Headlining, Anthracite
	Interior trim, Palladium Grey
	M aerodynamic bodystyling
	M Sport multi-function leather steering wheel, three-spoke
	M Sport suspension (can be deleted)
	Sport seats – front

Weight		535i	550i	530d	535d
Unladen EU ¹	kg	2015	2135	2035	2045
Max. permissible	kg	2570	2690	2590	2600
Permitted load	kg	630	630	630	630
Permitted axle load front/rear	kg	1165/1470	1245/1500	1180/1475	1190/1475
Permitted roof load	kg	75	75	75	75
Permitted trailer load, unbraked	kg	750	750	750	750
Permitted trailer load, braked max. 12%	kg	2100	2100	2100	2100
Permitted trailer load, braked max. 8%	kg	2100	2100	2100	2100
Permitted trailer nose weight	kg	100	100	100	100

Engine²		535i	550i	530d	535d
Cylinders/valves		6/4	8/4	6/4	6/4
Capacity	cc	2979	4395	2993	2993
Stroke/bore	mm	89.6/84.0	88.3/89.0	90.0/84.0	90.0/84.0
Output/engine speed	kW/rpm	225/5800	300/5500	180/4000	220/4400
	(hp/rpm)	(306/5800)	(407/5500)	(245/4000)	(300/4400)
Max. torque/engine speed	Nm/rpm	400/1200–5000	600/1750–4500	540/1750–3000	600/1500–2500
Compression ratio	:	10.2	10.0	16.5	16.5

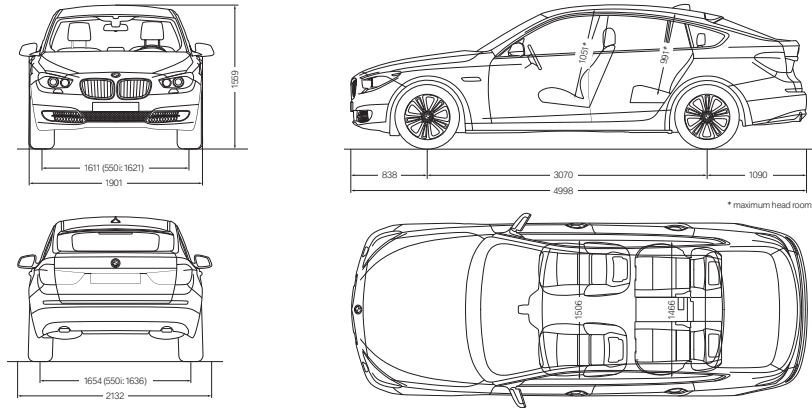
Transmission		535i	550i	530d	535d
Standard transmission ratios					
	IV/III:1	4.71/3.14/2.11	4.71/3.14/2.11	4.71/3.14/2.11	4.71/3.14/2.11
	I/V/VI:1	1.67/1.29/1.00	1.67/1.29/1.00	1.67/1.29/1.00	1.67/1.29/1.00
	VII/VIII/R:1	0.84/0.67/3.30	0.84/0.67/3.32	0.84/0.67/3.32	0.84/0.67/3.32

Performance		535i	550i	530d	535d
Top speed	km/h	250 ^a	250 ^a	240	250 ^a
	mph	155 ^a	155 ^a	149	155 ^a
Acceleration 0 – 62mph (0 – 100km/h)	sec	6.3	5.5	6.9	6.1

Fuel consumption^{2,3}		535i	550i	530d	535d
Urban	l/100 km	12.3	16.2	8.1	8.3
	mpg	23.0	17.4	34.9	34.0
Extra-urban	l/100 km	6.9	8.3	5.6	5.8
	mpg	40.9	34.0	50.4	48.7
Combined	l/100 km	8.9	11.2	6.5	6.7
	mpg	31.7	25.2	43.5	42.2
CO ₂ emissions	g/km	209	263	173	175
Tank capacity, approx.	l	70	70	70	70

Wheels	535i	550i	530d	535d
Tyre dimensions	245/50 R18	245/45 R19 / 275/40 R19	245/50 R18	245/50 R18
Wheel dimensions	8J x 18	8.5/9.5J x 19	8J x 18	8J x 18
Material	Light alloy	Light alloy	Light alloy	Light alloy

Electrical system	535i	550i	530d	535d
Battery capacity	Ah 90	90	90	90
Alternator output	A 210	220	180	230
	W 2940	3060	2520	3060



All dimensions in the technical drawings are given in millimetres.

Luggage compartment volumes:

Rear seats all the way back/partition wall locked in 440 litres, rear seats all the way forward/partition wall vertical 590 litres, rear seats and partition wall folded down 1,700 litres.

¹ Figures are based on a 90% tank filling, driver's weight of 68kg and 7kg of luggage. Unladen weight applies to vehicles with standard equipment. Optional extras may increase these figures.

² The petrol engines are designed for RON 98 fuel. They may be run on fuel down to RON 91 with a slight decrease in engine power.

³ All engines conform to the EU5 standard. Fuel consumption is determined according to the ECE combined cycle (93/116/EC)

in which approx. one third of the distance covered is in urban traffic and two thirds is extra-urban. CO₂ emissions are measured in addition to fuel consumption. Consumption figures apply to cars with standard equipment. Optional extras (e.g. wider tyres) may affect consumption significantly.

⁴ Electrically limited.

AN INTRODUCTION TO LONDON 2012.

Why we were selected as the Official Automotive Partner for London 2012.

Our partnership with London 2012 is a natural fit for the business. Our emission lowering technologies, through the EfficientDynamics programme, will play a role in aiming to deliver the most sustainable Games possible. Our range of the world's most fuel efficient premium cars will transport the Olympic Family at the Games – including athletes, officials and the media – and shine a light on the future of mobility with our ground-breaking developments in the next generation of transportation.

The Games time fleet.

BMW Group's role is incredibly important to the success of the Games. The fleet that will mobilise the Olympic and Paralympic Games will be over 4,000 vehicles strong. A huge undertaking and commitment. Conventional and hybrid vehicles from the range will be used in the vast Olympic Games fleet and BMW Group will showcase electric vehicles as part of our role in London 2012.

We're proud to be a partner.

As a major investor and employer in the UK, our partnership will be an inspiration for our customers, employees and dealers, as we continue to develop market-leading innovations and technologies to shape the future of design, development and driving pleasure.

We are immensely proud of our partnership.

MEET THE BMW LONDON 2012 PERFORMANCE TEAM.



MARTYN BERNARD
High Jump

My parents got me into athletics as a way of channelling my energy, and I haven't looked back. I won my first major medal in 2005 and am now focusing on London 2012, along with studying for my Law degree.



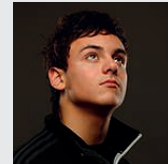
ALISTAIR BROWNLEE
Triathlon

I still remember the thrill of being told I could win medals by my local swimming club. The joy of being outdoors and active led me to my first triathlon when I was 10, and winning the World Junior Championships in 2006 drove me to pursue my Olympic dream. Hopefully I'm on track for London 2012.



JONATHAN BROWNLEE
Triathlon

I started swimming at 4, but when I was 10 my Uncle was in a local triathlon and I couldn't wait to try it too. A month later I took part in my first event. That summer I watched Cathy Freeman race to victory in Sydney 2000 – and I can still remember every second.



TOM DALEY
Diving

I started diving by chance when I was 7, and began competing just before my 9th birthday. There have been lots of highlights since then, including winning the World Championships when I was 15 and picking up two gold medals at the 2010 Commonwealth Games Delhi.



official partner of the
Olympic and Paralympic Games

BMW London 2012 Performance Team.

BMW is proud to support Team GB and ParalympicsGB athletes through the BMW London 2012 Performance Team. We want to help the athletes qualify and succeed at the Games. Behind our intelligent technologies lies an understanding that even the smallest change can make a big difference to performance – something that every athlete knows. We'll be working with our London 2012 hopefuls to see how we can actively support them through our world-leading technical expertise. It's going to be an amazing journey.



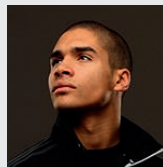
MARK HUNTER
Rowing

I think the turning point in my career was moving to the prestigious Leander Club, which gave me the opportunity to row with the best athletes in the world. I strive to keep improving and, having already won gold in Beijing 2008, a win in London 2012 would be extra special.



ELLIE SIMMONDS
Paralympic Swimming

I was inspired to take up competitive swimming by the Athens Paralympic Games in 2004. After winning two gold medals in Beijing 2008, I became the youngest person to be awarded an MBE, aged 14. Since then, I've been working hard towards London 2012.



LOUIS SMITH
Gymnastics

My first Olympic Games was Beijing 2008, where I won the bronze for the men's pommel horse. That made me the first Briton to win a medal in the individual gymnastics since 1908. Since then I've picked up medals in 2009 and 2010. So hopefully I'm on track for London 2012.



TOM AGGAR
Paralympic Rowing

I started rowing after an accident in 2006 and won my first event at the British indoor championships that year. In 2007 I won gold in a world best time at the World Championships in Munich and I have recently won the International Rowing Federation's first 'Paralympic Rower of the Year' award – my next goal is gold at London 2012.

More athletes are coming soon. You can follow their journey at bmw.co.uk/london2012

BMW LONDON 2012
PERFORMANCE TEAM

Condition Based Service. A key feature in most BMW models, Condition Based Service (CBS) signals an innovative leap forward in BMW Service diagnostic technology. The way it works is simple. CBS uses sensors to constantly monitor the areas of your BMW that are subjected to wear and tear. Based on the results of the data, CBS decides the extent to which servicing is necessary. This information is then stored in your vehicle's key. Using a KeyReader, BMW Service staff can download information to provide an accurate analysis of your vehicle. This means your BMW goes for a service only when it needs to, saving you an immeasurable amount of both time and money.

Service Intelligence. BMW Approved Technicians are experts in the use of diagnostic equipment, which quickly identifies if and why the vehicle is running at anything less than peak efficiency. This leads to rapid identification and rectification.

Service Assurance. For additional peace of mind, take comfort in the fact that every new BMW is covered by a three-year warranty that includes BMW Emergency Service throughout Europe. For more information on BMW Service, please contact your local BMW Dealer, BMW Service Authorised Workshop or visit www.bmw.co.uk/service.

TAILORED FOR YOUR VEHICLE. BMW SERVICE.



BMW Service Inclusive. Wouldn't it be good to know all your servicing costs in advance? Well, that's exactly what BMW Service Inclusive¹ provides and for a low one-off payment.

BMW Service Inclusive¹ lasts for 5 years or 60,000 miles (whichever occurs first) and covers all your vehicle's servicing requirements. Alternatively you can choose BMW Service Inclusive¹ Plus, which in addition to servicing also covers maintenance items such as brake pads, brake discs and windscreen wipers. And whenever servicing and maintenance work is carried out on your BMW, you can be sure that it will only be done by fully qualified BMW Service Approved Technicians at one of over 150 BMW Service Authorised Workshops around the country. Furthermore, only Genuine BMW Parts are used – each covered by a two year warranty.

BMW Service Inclusive and Service Inclusive Plus are transferable to subsequent owners within the time and mileage period, which can enhance the resale value of your car.²



BMW Assist. BMW Assist provides telematic and online services that are fully integrated with the BMW navigation and Bluetooth telephone systems to offer enhanced services. This provides you and your passengers access to key information from within the vehicle, helping you keep safe and in touch. In the event of an emergency, a 999 SOS call can be triggered manually or in extreme situations automatically. Details of your vehicle and location will be sent directly to a 999 SOS Emergency Service centre so help can be sent without delay. A similar function is also available to connect you to a BMW Service Centre should you require roadside assistance. If you have locked your keys in your car, or cannot recall if you have locked your car, with Remote Services the BMW Service Centre can lock or unlock your vehicle remotely.

Information-based services are also included, you can make an Information Plus call to request addresses and telephone numbers are transferred to your vehicle. There is also the facility to send addresses and telephone numbers directly to your vehicle yourself with Google Maps. Using the in-car portal on your vehicle's Control Display you can check the latest news and weather, or access the Google Local Search from where you can look-up business addresses in the car yourself. The Routes service provides a route planning facility from the comfort of home, or access to download a variety of predefined BMW Routes across Europe.

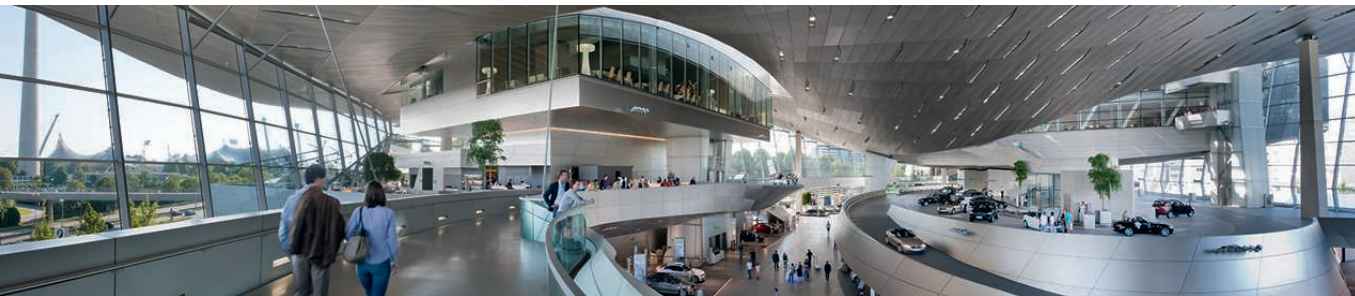
¹ Service Inclusive and Service Inclusive Plus are available as cost options. Terms and conditions apply, for full details speak to your dealer or visit www.bmw.co.uk/serviceinclusive

² For further information, please contact your local BMW Dealer.

BMW Assist services are free of charge for three years on any new BMW 5 Series Gran Turismo equipped with a navigation system. Services are not available in the Republic of Ireland, Isle of Man and the Channel Islands. Terms and conditions apply.

SHAPING THE FUTURE – RESPONSIBLY.

The BMW Group has been ranked the most sustainable automotive company worldwide in the Dow Jones Sustainability Index for the sixth time in a row. Sustainability is an integral part of our value chain, encompassing



EXPERIENCE MORE WITH BMW.



BMW Emergency Service. BMW Emergency Service is the only roadside and assistance programme designed specifically for BMW vehicles offering an exceptional range of benefits and services. It is available 24 hours a day, 7 days a week and utilises a dedicated fleet of BMW Approved Technicians, equipped with Genuine Parts and tools, ensuring that you and your vehicle receive the best possible care in the event of any motoring emergency. This tailor-made programme has been specifically designed to meet the needs of BMW drivers travelling in the UK, Republic of Ireland and Continental Europe giving complete reassurance and peace of mind. Every new BMW is covered for three years.



BMW Financial Services. Chances are you've already decided on the BMW you want to drive. Now discover the perfect finance solution to get you behind the wheel. BMW Financial Services offers a range of tailor-made finance and insurance packages designed to suit you and your budget. And if you opt for insurance from BMW Financial Services, you'll be prepared for all eventualities. For more information, contact your local BMW Dealer. Alternatively visit www.bmwfs.co.uk or call us on 0870 5050 150.

Our comprehensive range of finance and insurance products includes:

- BMW Select (Personal Contract Purchase)
- BMW Hire Purchase
- BMW Contract Hire
- BMW Leasing
- BMW Car Insurance
- BMW Income Protection
- BMW Shortfall



BMW Magazine. Every new BMW customer receives a complimentary subscription to BMW Magazine. This publication features all the latest news and developments from BMW, together with a variety of driving and lifestyle features.

BMW News. To ensure you're one of the first to hear the latest BMW news and developments, BMW UK offer an email programme. Sign-up at: www.bmw.co.uk/newsletter.



BMW World, an iconic building in the Munich skyline. The BMW World is a true brand experience where it's possible to marvel at the historic BMWs in the museum, learn about our engineers' newest innovations and take a tour of the plant to experience with your own eyes the cutting-edge and exacting methods used to create a BMW.

every stage from the development of fuel-saving and alternative vehicle concepts to environmentally-friendly production processes and recycling. Our research and development philosophy BMW EfficientDynamics delivers tangible benefits to customers, our climate and the environment. This is reflected in the reduction of CO₂ emissions by nearly 30% across our European fleet of new cars between 1995 and today. We're also aiming to reduce the amount of resources such as water and energy consumed by our vehicle production by 30%

between 2006 and 2012. Your BMW is part of a comprehensive recycling concept. At the end of its long service life, every single vehicle can be easily and economically recycled. Please contact your BMW Dealer on all matters regarding the return of your end-of-life vehicle. For further information please visit our website.

➤ www.bmw.co.uk/EfficientDynamics
➤ www.bmw.com/recycling

More about BMW



The Ultimate
Driving Machine

www.bmw.co.uk

The models, equipment and possible vehicle configurations (standard and optional equipment) illustrated in this Brochure reflect the specifications of vehicles supplied by BMW AG to the German market. In other EU member states, individual models' equipment content and possible configurations of standard and optional equipment may vary. For precise information on the various country-specific versions available, please contact your local BMW Dealer. Subject to change in design and equipment. Part number 94 23 1 120 700.

© BMW AG, Munich/Germany. Not to be reproduced wholly or in part without written permission of BMW AG, Munich.

BMW recommends  **EDGE**



BMW UK on Facebook
www.facebook.com/bmwuk