

**Whatever you're looking for
there's something very special
about the Citroën range
of cars...**

CITROËN 

The comfort and roadholding of Citroen cars are legendary, and many of their features are unique – like self-levelling Hydropneumatic suspension, which is a system you just can't buy on any other car at any price.

Cars like the Dyane and the Ami 8 have brought down the cost of safe, comfortable family motoring – providing the kind of sophisticated features and roominess previously associated with much costlier models.

The GS, acclaimed in many countries, gives ride qualities never believed possible in a car in this price range. Unique Hydropneumatic suspension, aerodynamic body styling, a revolutionary flat-four overhead camshaft engine and power-

operated disc brakes on all four wheels – these are just a few of the features which make the GS an outstanding car in the medium price range.

The D Series, with a wide choice of models within the range, remains unequalled by any other car on the road for comfort and safety; and so do the D Estates, with their amazing ability to carry huge loads over long distances without effort.

The supreme SM EFI – created by Citroen and powered by Maserati – takes you from 0-50 in 6.1 seconds, and carries you across continents in style.

It completes this unique range of cars, which is designed to suit every conceivable need and every budget.

CITROËN 



Dyane

The Dyane has five doors and a sunroof, yet it costs less than any other four-door car you buy. Tough air-cooled engine. Front wheel drive. Generous passenger and storage space – plus 9 cu. ft. boot. Brisk performance. Very low petrol consumption and maintenance costs.

Dyane 4: 26 bhp SAE 65 mph.

Dyane 6: 35 bhp SAE 72 mph.

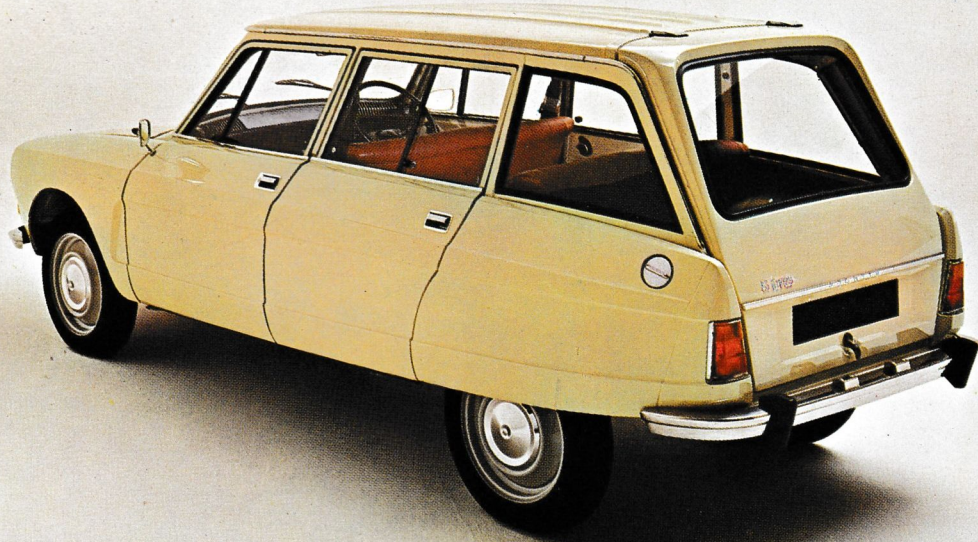
Illustrated: Dyane 4

Ami 8 Luxe

A sophisticated car with a small price tag. Four doors. Generous space for four people and their luggage. Top speed of 75 mph. Petrol consumption of 41 mpg. Front-wheel drive and independent suspension all round give roadholding and comfort that are exceptional in this price range.

Also available: Ami 8 Club saloon with more luxurious finish and trim, including reclining seats.





Ami 8 Estate

The Ami 8 Estate has the same comfort and equipment as the saloon, and carries loads up to $7\frac{1}{4}$ cwt. Four doors plus full-height rear door. Easy-to-load flat floor with 4'9" of uninterrupted space or 5'6" with the back seat folded down. Citroën front wheel drive, roadholding and driver and passenger comfort make the Ami 8 Estate unbeatable at the price.

GS/GS 1220

One of the world's most wanted and acclaimed cars. Comfortable, safe, fast and stylish.

Hydropneumatic suspension plus front and rear anti-roll bars.

Front wheel drive.

Silent light alloy engine: flat-four with opposed cylinders and two overhead camshafts.

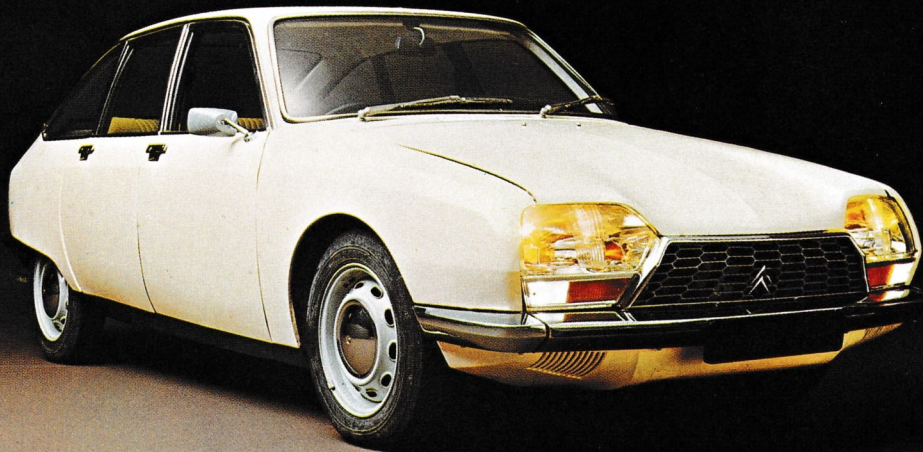
Dual-circuit power-assisted disc brakes on all four wheels.

Comprehensive dashboard equipment. Large straight-sided boot with no unusable corners.

Functional aerodynamic lines – with the sporting look that makes heads turn.

GS 1015 cc. 0-60 in 17.2 secs.

GS 1220 1220 cc. Maximum speed 94 mph. 0-60 in 15.2 secs.





GS/GS 1220 Estate

This is the estate car that doesn't look or behave like one. Hydropneumatic suspension provides constant ground clearance and road holding ability together with exceptional comfort – whatever the load. The GS Estate has the performance and interior luxury features of the saloon. Plus the fifth door which opens to a luggage capacity of 25 cubic feet – or 53 cubic feet with rear seat down. Also, available as 'Service' and 'Super Service' van.

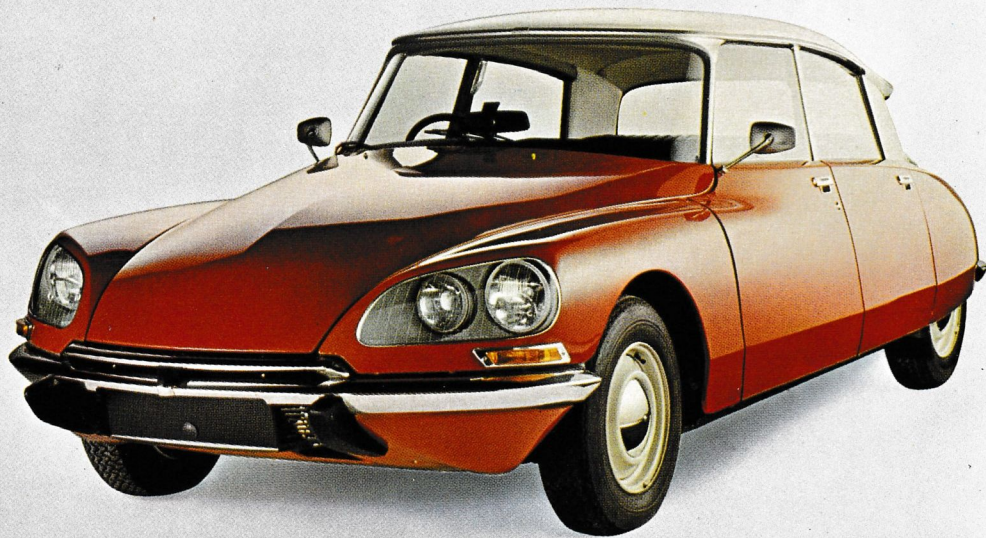
D Special/ DS 20/D Super 5-21

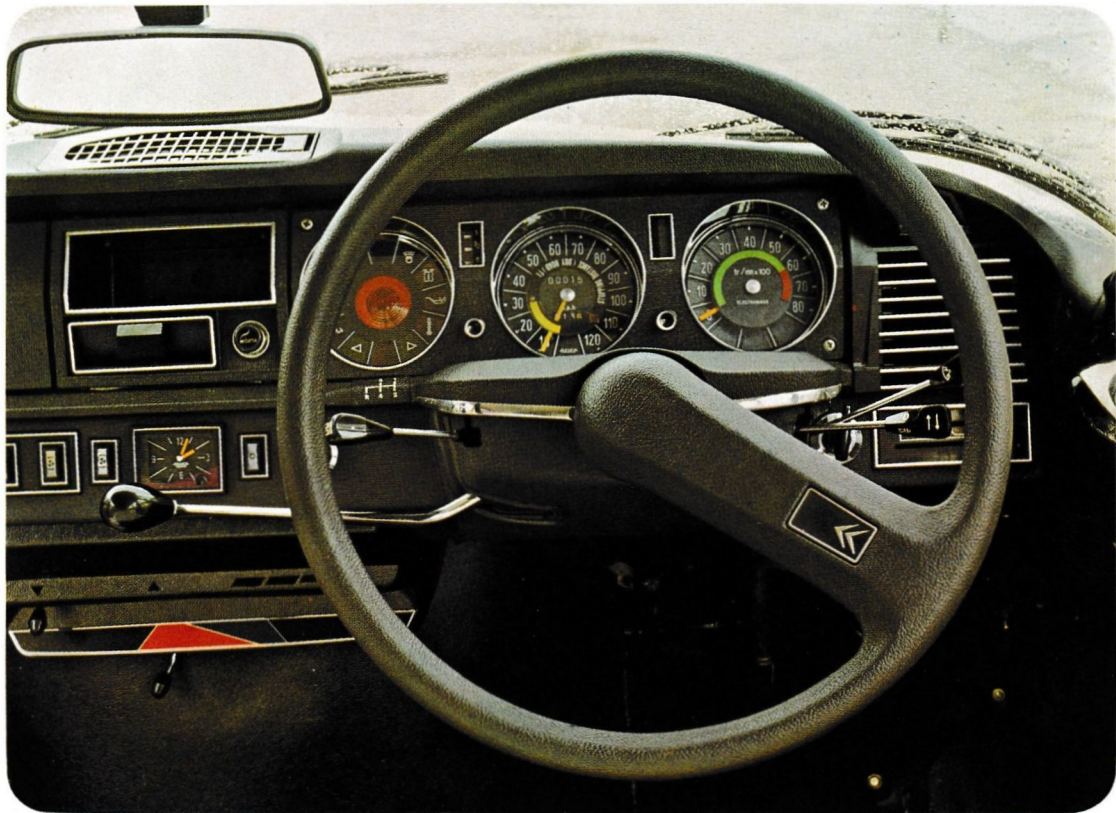
All the advanced DS technical features for safety and comfort – with a widened range of model options.

Front wheel drive.

Hydropneumatic suspension.
Automatic adjustment of braking effort given in relation to load.

Instrumentation is clear and complete (see picture right, which shows D Super dashboard). Instruments include electronic rev. counter, speedometer with braking distances marked, and warning light panel with 11 different hazard indicators.





D Special/ DS 20/D Super 5-21

D Special 1985 cc engine. 108 bhp SAE at 5750 rpm. 4-speed manual transmission.

DS20 'Semi-automatic' version of D Special, with 4-speed hydraulic clutch and servo-selection gearbox and power-assisted steering. 1985 cc engine.

D Super 5-21 New model, with 2175 cc engine and 5-speed manual transmission. Astonishing performance and acceleration for a very competitive price. Five forward speeds deliver optimum performance from the engine and make fast lane motorway cruising easy and quiet. 115 bhp SAE at 5750 rpm.

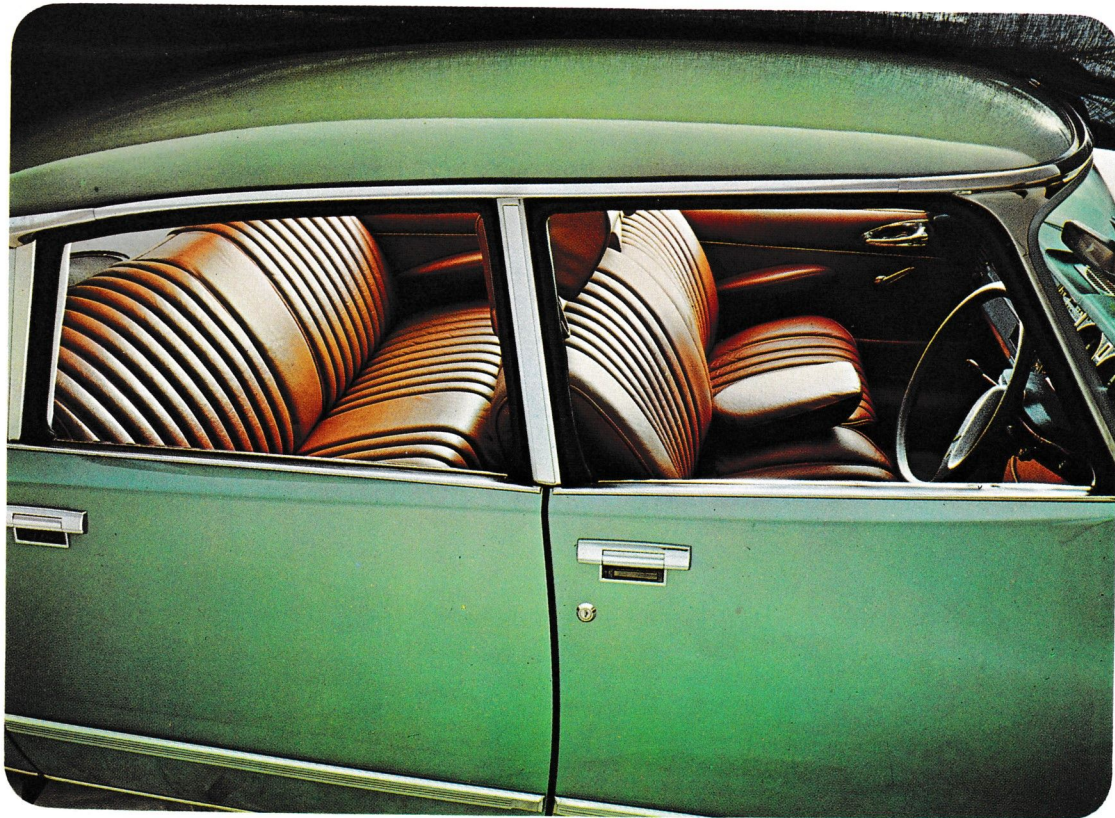
DS 23/DS 23 EFI

The great motorway cars: fast, luxurious, supremely confident. They can be specified with 4-speed hydraulic clutch and servo selection gearbox, or with 5-speed manual transmission.

DS23 The new 2347 cc engine delivers assured power and acceleration. Maximum speed is 111.2 mph and the standing $\frac{1}{4}$ -mile takes 18.2 secs (manual model). Maximum power is 124 bhp SAE at 5750 rpm.

DS23 EFI With Electronic Fuel Injection, performance is even more vivid: maximum speed 116.8 mph, standing $\frac{1}{4}$ mile 17.3 secs (manual model). Maximum power is 141 bhp SAE at 5500 rpm.





Pallas

Pallas finish gives you a special, ultra-luxurious finish and trim option. Deep comfortable adjustable seats with headrests. Padded doors and deep carpets with double thickness of foam backing. Stainless steel door tread plates. Restful, subtle colour schemes. Heated rear window. Everything is planned to eliminate tension and fatigue. Pallas finish is available on DS20, DS23 and DS23 EFI. An additional Pallas option is soft, supple leather trim (illustrated). Radio and centre armrest shown are accessories.

leather upholstery optional, radio and centre arm rest are accessories.

D20/23 Estate (Safari or Familiare)

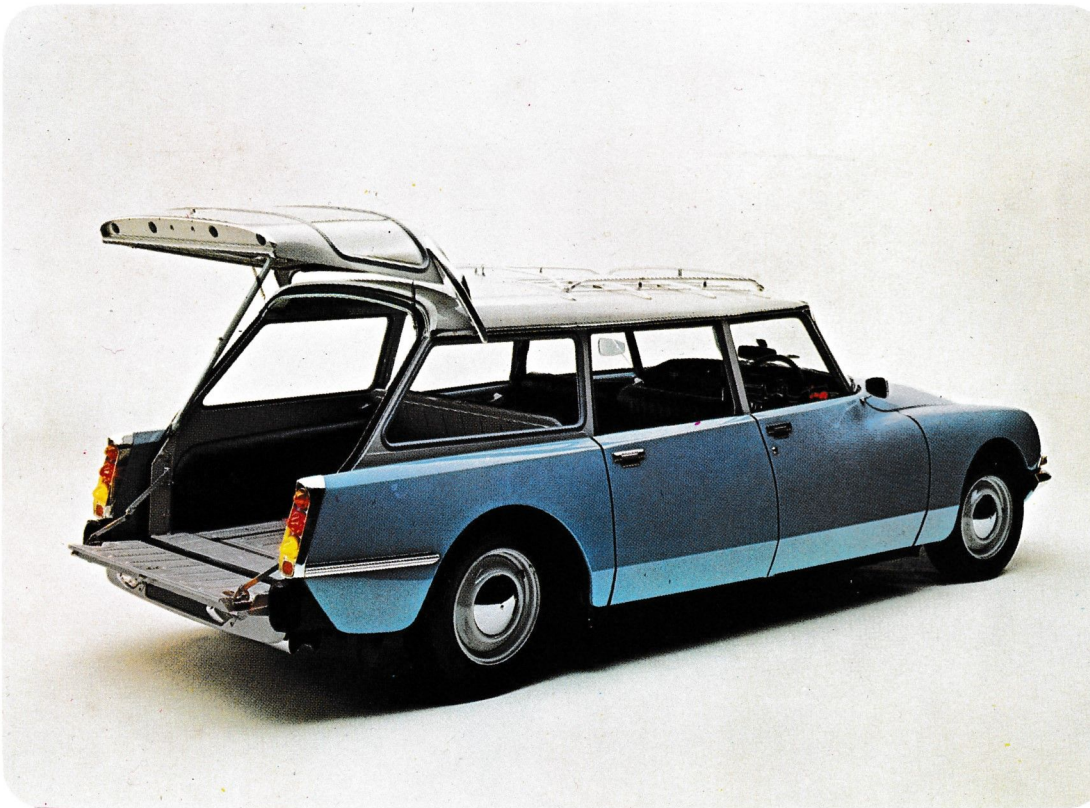
All the qualities – style, comfort, safety, roadholding, performance – of the DS. Plus enormous space that's entirely usable: up to 71 cubic feet.

Hydropneumatic suspension maintains the car at a constant height from the road – whatever the load. Front wheel drive ensures tenacious roadholding – and that the floor of the car is completely flat. Ground clearance can be raised at the touch of a lever.

D20 has economical 1985 cc engine.

D23 has new, more powerful 2347 cc engine.

Both are available in two versions: 7-seater Safari with front seat, fold-flat rear bench seat and fold-flat occasional seats behind; 8/9-seater Familiare, with front and rear bench seats and 3 fold-flat centre seats between.





SM EFI

The SM EFI is much more than a conventional 'Grand Tourer'. Its Maserati-powered motor is a promise of magnificent performance. In safety it sets a standard far ahead of its time. And its features are truly impressive: aerodynamics, Hydropneumatic suspension, hydraulically assisted steering adjusted according to speed – all combined with exquisite interior styling.

Electronic Fuel Injection boosts maximum power to 188 bhp SAE at 6250 rpm, top speed to 141.6 mph and reduces 0-50 time to 6.1 secs.