



CITROËN ZX

Hatchbacks & Estates



CITROËN ZX

the car with the strong personality

The success of the *award-winning* Citroën ZX has been built upon an outstanding combination of driving pleasure, quality and style.

Now with its latest range, the ZX again sets the standards for sheer class-beating driver appeal.

Tight *incisive handling* and unshakeable roadholding combine with a beautifully compliant ride. Whilst the high levels of driver and passenger comfort are all you would expect from a car that bears the Citroën insignia.

However, the keynote of this highly acclaimed car is, quite simply, quality. Sophisticated manufacturing techniques and the use of superior materials, together with Citroën's stringent quality control, ensure that the ZX is well equipped, *exceptionally well built* and well finished throughout.

Providing the power is a choice of advanced petrol, diesel and turbo diesel engines, which offer an optimum blend of performance and economy.

You can choose, too, between hatchbacks (3 and 5 door) and estates with two distinct trim levels, allowing you to select the ZX that matches your individual driving style . . . and lifestyle.





s t y l i s h
&
r u g g e d



Its inherent qualities and *individuality* separate the Citroën ZX from its peers. The smooth bonnet line rises to a sharply raked windscreen, while the large glass area contributes to the overall effect of purposeful energy and power. In addition to the stylish elegance, the ZX is distinguished by its flawless fit and finish, its *exceptional strength* and its outstanding durability.





inspired
&
hospitable



Moving inside the ZX, practicality blends with chic good looks and a spacious, light, airy environment. Here, Citroën's understanding of *ergonomics* is evident in the clear instrumentation and convenient location of controls. Further demonstration of how the ZX has been perfectly honed to ensure the well-being of the driver . . . and the *comfort* of the passengers.



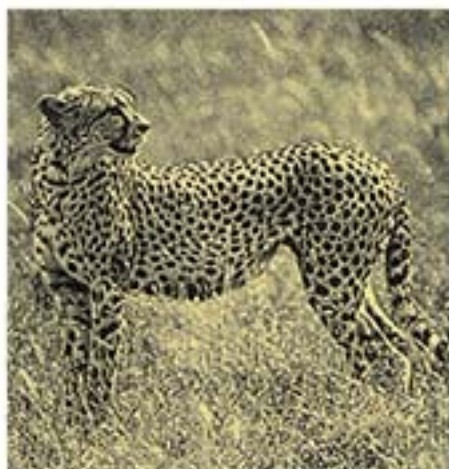


a d v e n t u r o u s
&
p r o t e c t i v e



To drive the ZX is to enjoy the rewards of crisp acceleration, *responsive handling* and surefooted cornering, coupled with assured braking ability. The key to this is Citroën's self steering rear axle; an intelligent use of technology that gives you greater control through unrivalled roadholding. All of which helps make an essentially *safety-conscious* car even safer.





muscular
&
thrifty



Powering this exceptional car is a range of petrol and diesel engines, each combining *excellent performance and frugal economy* with smooth efficiency and quiet refined power. Additionally, a choice of manual or automatic transmission (available on selected petrol and diesel models) offers fluid, close ratio gearing. So whatever your particular driving needs, there is a ZX engine that matches them perfectly.



CITROËN ZX

CITROËN ZX

As strength and durability are of paramount importance, the entire structure of the car has been computer designed to achieve an immensely strong bodyshell and platform of outstanding rigidity.



There are no less than 3,565 spot welding points to help maximise the strength and impact resistance of the ZX.



An impressive line-up of robots ensures computer-controlled precision and consistency.



Quality underpins the success of the Citroën ZX. An uncompromising approach to materials and advanced construction techniques has produced remarkable *strength* and solidity. In fact, from its introduction, the ZX has earned praise for its robustness; from the care taken to ensure the rigidity of the body, to the way that doors shut with a satisfying clunk.

The steering wheel on all ZX models is height adjustable.

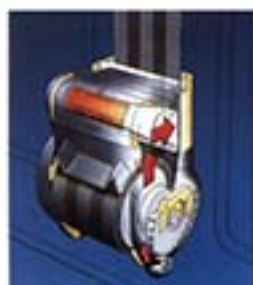


Front map-reading lights are standard equipment on SX models.



Pockets on the back of the front seats provide useful storage for maps etc.

Meticulous attention has been paid to the smallest detail, so fit and finish are superb, and every measure has been taken to ensure that the same level of quality is in abundance inside the ZX, too. The sculpted lines are reflected in the one-piece dashboard, which presents instrumentation at its clearest and where all controls fall easily to hand.



The ZX's passive safety programme includes front seat belt pre-tensioners. These have sensors that detect sudden deceleration and rewind up to 10cm of slack in the belts in under 25 milliseconds. This pulls front seat occupants firmly back in their seats. Once the car has stopped, the belt tension is immediately released.



Working in conjunction with the seat belt pre-tensioner separate sensors activate the driver's airbag, which inflates in under 50 milliseconds – deflating when the driver's head and chest make contact, in order to cushion the impact.

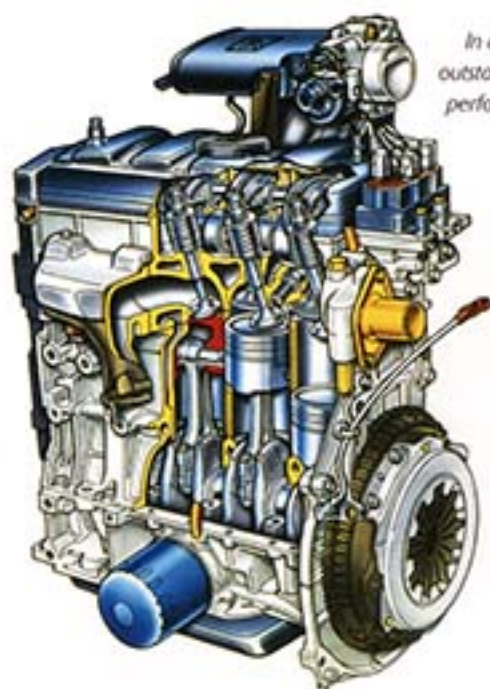


Steel side impact bars in each door provide extra protection for occupants in the event of a side-on collision.



The key-pad immobiliser system, fitted to all models, disables the engine until the driver enters a personalised 4 digit code.

The protection of those who would ride in the ZX was a vital consideration in its design. All models feature side impact protection, driver's airbag and front seat belt pre-tensioners. But apart from *safeguarding* its passengers the ZX enjoys a high degree of protection itself. Central locking is standard on all ZXs whilst a sophisticated engine immobiliser and two-way alarm on many models also act as an *effective deterrent* to theft.

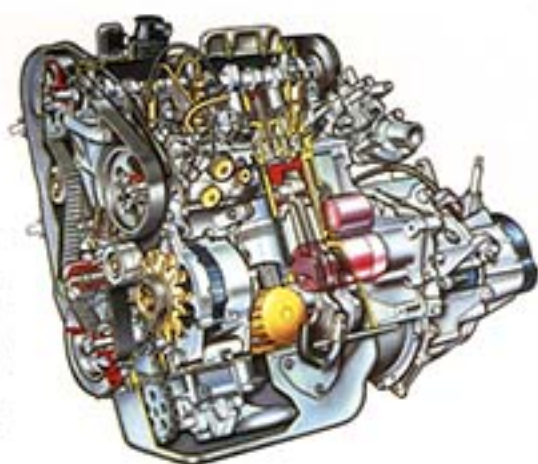


In a car where every single feature is outstanding, you would naturally expect performance to match. The ZX will not disappoint you. The quiet, refined power of the highly efficient and flexible ZX engines is the result of decades of Citroën's proven expertise. The 1.4 fuel-injected petrol engine for example develops 75 hp and produces 82 lbs.ft of torque at 3400 rpm.



Programmed rear wheel steering brings you a greater degree of driving pleasure through greater control. This innovative system has a trailing arm design which enables the rear wheels to turn marginally in line with the front wheels. An intelligent use of technology that gives unrivalled roadholding and positive, confident cornering.

Citroën's ZX diesel engines have earned a reputation for outstanding economy and smooth, responsive power. In the ZX hatchback the 1.9D returns a generous 5.5 l/100 km (51.4 mpg) on the extra urban cycle and develops an impressive 90 lbs.ft of torque at 2000 rpm. Whilst the highly acclaimed 1.9 Turbo D boasts 148 lbs.ft of torque and surprisingly at 56 mph its fuel economy is the same as the ZX 1.9D.



Powering the Citroën ZX is a superb range of petrol and diesel engines delivering excellent performance together with outstanding torque and fuel consumption figures. These, coupled with the programmed rear wheel steering and features such as power steering, standard across the ZX range, and ABS braking (available as an option on SX models), make the ZX an involving yet reassuringly safe driving experience.







Central locking on SX models is operated by a compact, remote control device.



Electric front windows are standard on the SX and controls are conveniently located on the front armrest.



The driver's seat is adjustable for height on SX models.



So that you always feel *comfortably in control*, the cabin has been planned with ergonomic efficiency and convenience very much in mind. To make it possible to find your ergonomically correct driving position a height adjustable steering wheel comes as standard and SX models also feature driver's seat height adjustment. There's even an audible warning to tell you when lights have been left on. In fact no effort has been spared to create an inviting, convenient interior.

All ZX's feature adjustable sun visors with a courtesy mirror on the driver and passenger side.



A tilt/slide electric sunroof with sunshade is standard on the SX models.



The SX models feature an electrically operated passenger door mirror.

The creation of the ZX's *relaxing environment* goes far beyond richly upholstered, supportive seating. This is amply demonstrated by the wealth of features dedicated to comfort and convenience. Most models come with an electrically operated tilt/slide sunroof and electric front windows as standard. Moreover, comfort also depends on interior temperature and air quality, so the ZX has an efficient heating, ventilation and demisting system. Noise levels are low, too, thanks to effective sound insulation and high build quality.







The ZX's wide low sill makes loading easier.



This useful storage compartment keeps the Estate's load area free of clutter.



Height adjustable front seat belts are standard on all 5-door and Estate models.



The *roominess* of ZX hatchbacks and estates is certain to impress. The cabin is wider than average at 1.41 metres, with generous headroom, leg and shoulder room. This is matched by one of the best figures in its class for *habitable length* (the distance between the accelerator pedal and the rear seat backrest). Moreover, when the rear seats in the ZX hatchback are fully folded, there is between 30 and 40 cu. ft. of loadspace from floor to ceiling.

All Estates feature 1/3:2/3 split rear seats to give you greater flexibility in dividing space between people and loads.



Four lashing points on the floor of the Estate's load area allow luggage to be easily secured.



Additionally on SX Estate models a cargo net prevents loose items from sliding around the load area.

For the ZX that is the ultimate in *spaciousness*, take a long look at the Estate versions. Open the tailgate and with the rear seats fully folded, you are greeted by a loadspace over 1.68 m long representing a capacious 55.8 cu. ft. with a wide flat floor and minimal intrusion from wheel arches. Additionally, split folding rear seats enable maximum flexibility and minimum compromise when accommodating passengers and loads.



ZX Leader models feature an integrated, security-coded, stereo radio cassette with 2 speakers.



The SX versions feature an integrated, security-coded stereo radio cassette with RDS, auto reverse and 4 speakers.



The 1/3:2/3 split folding rear seats in all ZX estates and SX hatchbacks offer flexible loadcarrying capability.



The retractable load cover (standard on SX Estate models) is easily removed and takes up little space when rear seats are folded.



For added security all ZX models feature a lockable glove box.



Body colour painted door mirror housings are standard on SX models.



Front fog lamps are standard on the SX hatchback models.



On all ZX models the rear wiper blade sits on a heated section of the screen.



Roof rails are standard on all ZX Estate models.



CITROËN ZX 'LEADER'

Models available:

3 door: 1.4i (75hp) 1.9D (68hp)

5 door: 1.4i (75hp) 1.9D (68hp)

Estate: 1.9D (68hp) 1.9TD (90hp)

Some key standard features include:

Power steering

Engine immobiliser

Driver's airbag

Front seat belt pre-tensioners

Key operated central locking

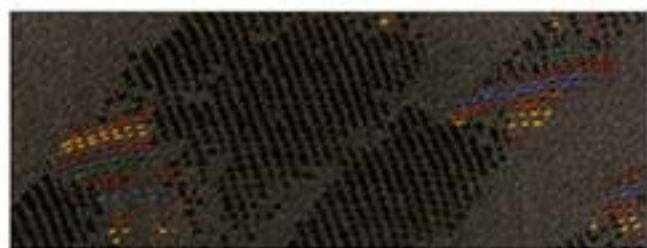
Tinted glass

"Lights on" warning buzzer

Rev. counter

Digital clock

Stereo radio cassette with two speakers



Stratus cloth upholstery standard on Leader models.



CITROËN ZX 'SX'

Models available:

3 door: 1.9TD (90hp)

5 door: 1.4i (75hp) 1.8i Auto (103hp)

1.9D (68hp)* 1.9TD (90hp)

Estate: 1.4i (75hp) 1.9D (68hp)*

1.9TD (90hp)

*Available with automatic transmission at extra cost

Additional equipment on SX models:

Anti-theft alarm

Electric front windows

Electric passenger door mirror

Electric slide/tilt sunroof

Remote control central locking

Front fog lamps (3 and 5 door only)

Driver's seat height adjustment

Velour upholstery

Split/folding rear seat with head restraints

RDS stereo radio/cassette with four speakers



Rio velour upholstery standard on SX models.



helpful
&
nature
lover



Citroën's policy throughout the UK network of 250 dealerships is to ensure that both car and driver receive the highest standards of care. This applies to the technicians who are *fully trained and equipped* to give your ZX the *expert attention* it deserves using only genuine Citroën parts, as well as a comprehensive package of services that are available for the private and business user.

CITROËN elect 3

Citroën Elect 3 and Citroën Personal Lease.

When it comes to acquiring a new Citroën ZX, Elect 3 Personal Contract Purchase and Personal Lease are each designed to offer flexibility and affordability to the private purchaser. Elect 3 offers the option to purchase whilst Personal Lease is designed for those individuals who are not concerned with ownership. With both schemes you decide your anticipated annual mileage, and whether routine servicing or full maintenance should be included.

Elect 3 and Personal Lease make it an affordable proposition to change to a new Citroën more often.

NB A guarantee may be required. Finance subject to status. Written quotations on request from PSA Finance plc, Sicilian Avenue, London WC1A 2QQ.

Caring for our customers and the environment

Citroën apply the same criteria to providing excellent customer service as they do to producing class-beating cars like the ZX. And so, every ZX comes with a 12 month, unlimited mileage *Warranty Package*, plus a 6 year anti-corrosion warranty. In addition Citroën Assured can provide inexpensive extended warranty protection, giving an extra one or two years security and covering virtually all electrical and mechanical components of the ZX.

For total peace of mind, the *Citroën Assist* scheme operates 24 hours a day throughout the UK and Western Europe and comes free of charge for a full year or up to 3 years under Elect 3. In response to a free phone call, Citroën Assist brings expert roadside assistance in an emergency.

Should an immediate solution to the problem not be possible on the spot, your car will be transported to the nearest Citroën dealership and, in the UK, the occupants will be taken home – or on to their original destination. Included in the UK cover Citroën Assist provides a hire car and hotel accommodation if required – as well as a *home start service*. Another benefit is that the scheme covers the vehicle, so it applies to anyone driving your ZX. All this in line with Citroën's

concept of total customer care. An uncompromising commitment that ensures the highest levels of service throughout the organisation and dealership network. The common objective being to make choosing, buying and owning a ZX as enjoyable as driving one. Apart from providing outstanding customer care, Citroën is also committed to *caring for the environment*. For example, Citroën is heavily involved in the testing of a prototype electric car to provide a practical solution to reduce the problems of urban pollution.



Additionally, for more efficient recycling at the end of a car's life, all plastic components are coded for simple identification of their composition. This 'Zero Waste' initiative is another result of the continuing programme of research into the development of non-toxic, more efficient production processes – and quieter, cleaner, more fuel-efficient cars.

Nothing moves you like a Citroën

NOTE: This brochure is intended to show the general appearance of the Citroën ZX. Some of the photographs depict left hand drive vehicles whose specification may not necessarily conform to vehicles imported into the United Kingdom. However every endeavour has been made to ensure that the information and details contained in the text of this brochure were accurate as of 26th July 1996. Please note that this information relates to models built since 1st September 1996. The company however reserves the right, while preserving the essential characteristics of the model described, to introduce at any time modifications, changes of details, equipment or accessories as may be considered necessary to improve the models described or for any other reason. Every effort will be made to bring the brochure up to date from time to time but to avoid any misunderstandings any person interested should enquire of the company or its agents as to whether there have been material alterations since the date of the issue of this brochure.



CITROËN