

FORD FIESTA



Go Further



Visionary. Ingenious. Remarkable.
Every car bears his signature.

Henry Ford



Unlock extra content online. If you use a smartphone or tablet, download the Fiesta Viewr app and point your device at any page with the phone icon.





Could this be the start of a long-lasting love affair?

With sparkling accents and high quality details, the Ford Fiesta is polished and poised. Look a little deeper and you discover every single component is engineered with one objective clearly in mind: quality that's built to last.



Use your voice like another pair of hands.

Ford SYNC with AppLink* and Emergency Assistance* lets you play music, make and receive hands-free calls, read out incoming text messages ** and even control apps on your smartphone. In the event of a collision Ford Emergency Assistance* communicates with the Emergency services directly, providing coordinates of the incident and allowing occupant control at all times.



*Compatible mobile phone required. (SYNC AppLink is available from summer 2014). You can browse a list of AppLink-compatible apps from www.Ford.co.uk, or via the **App Catalog** available in iOS and Android stores. SYNC AppLink and Emergency Assistance are not supported by all European languages.

**With compatible mobile phones only.



“Call Dad”

“Call Chris”

“Shuffle”

“Call home”

“Read message”

“List mobile apps”

“Call office”

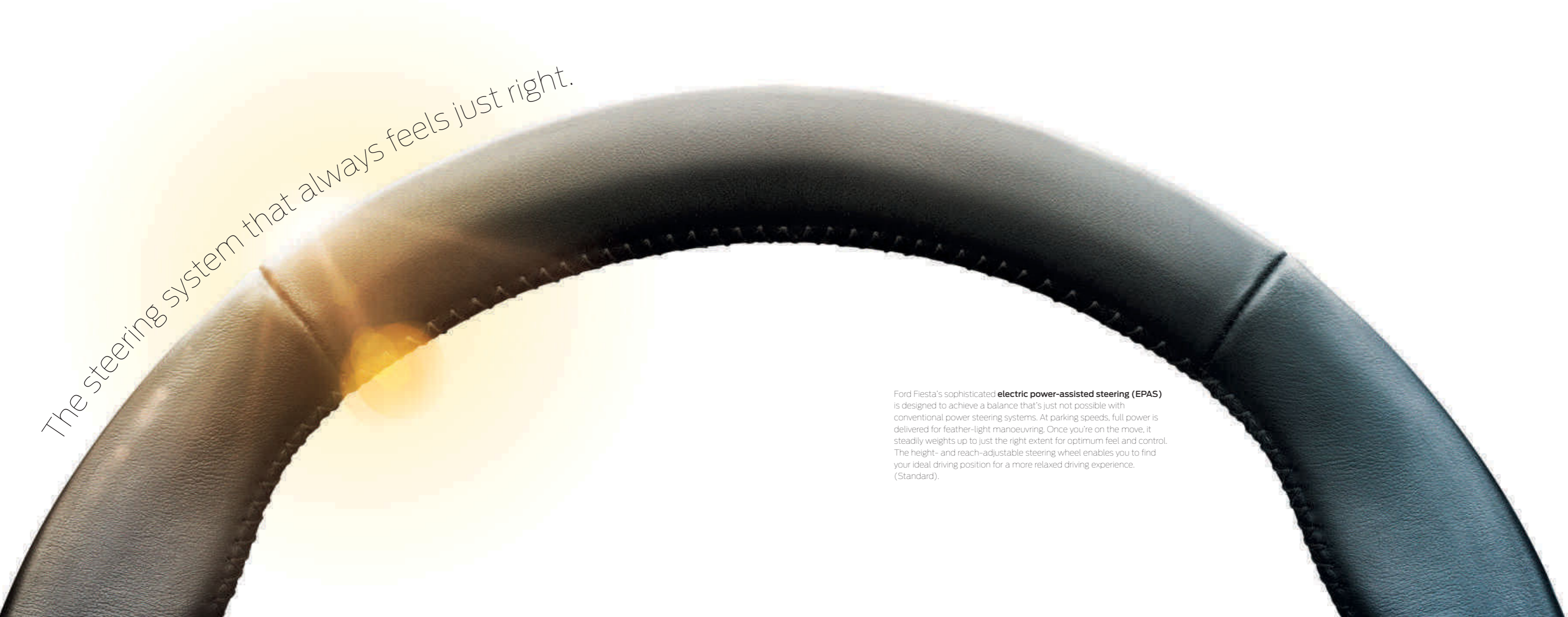
“What’s playing?”

“Play artist Rihanna”

Indulge your love of style.

Enjoy high-quality partial or optional full leather seats, perfectly complemented by a leather-trimmed handbrake handle and gearshift knob in the Fiesta's beautifully crafted interior. A new premium flow through centre console with armrest, cup holder and chrome highlights – plus enhanced ambient lighting – complete your interior with finesse. (Standard on Titanium X, ST, ST2 & ST3)





The steering system that always feels just right.

Ford Fiesta's sophisticated **electric power-assisted steering (EPAS)** is designed to achieve a balance that's just not possible with conventional power steering systems. At parking speeds, full power is delivered for feather-light manoeuvring. Once you're on the move, it steadily weights up to just the right extent for optimum feel and control. The height- and reach-adjustable steering wheel enables you to find your ideal driving position for a more relaxed driving experience. (Standard).



ST

Enjoy the performance of a manual.



With the convenience of an automatic.

Ford PowerShift delivers the perfect combination between automatic convenience and manual efficiency. This 6-speed automatic transmission selects the next appropriate gear at precisely the right moment for smooth, lightning-fast gear changes, with no disruption to the flow of power. The manual mode lets you switch gears at the push of a button – no clutch pedal required.



Ford EcoBoost – International Engine of the Year 2012 & 2013.

With direct petrol injection, turbocharging and variable valve timing, Ford EcoBoost engines deliver power and torque consistent with larger displacement engines. The result is remarkable performance from such an economical engine. Winner at the International Engine of the Year Awards 2012 & 2013, the new 1.0-litre EcoBoost is available in 100 PS and 125 PS versions.



Powered by **FORD EcoBoost**



Less fuel. More power.
Lower emissions.

The new **1.0 EcoBoost 125PS** petrol engine produces 30 per cent more power than the larger capacity 1.4 96PS engine available in the prior model Fiesta and yet can achieve around 32 per cent better fuel economy on the combined test cycle and has 24 per cent lower CO₂ emissions. The 1.6 Duratorq TDCI 95 PS diesel engine with auto start/stop is even more frugal, with CO₂ emissions of just 85 g/km*. (Engine available across Style ECONetic, Zetec ECONetic & Titanium ECONetic)


85g/km CO₂

(*See Fuel, Performance & emissions on page 66)

The key that gives you peace of mind.

Ford MyKey® is an innovative programmable feature that encourages safer driving. MyKey® lets you tailor car settings to suit individual users. These settings include speed limit reminders and maximum audio volume. You can also prevent deactivation of driver assistance features where fitted. MyKey® settings are automatically activated each time MyKey® is used. (Standard on Style and above)



A detailed close-up of a car's headlight assembly, set against a vibrant blue background. The headlight is illuminated, showing a complex internal structure with multiple lenses and a prominent yellow-tinted halogen projector bulb. A strip of LED day running lights is visible along the bottom edge of the headlight housing. The surrounding car body is painted in a matching bright blue color with sleek, aerodynamic lines.

Halogen projector headlights
with LED day running lights.
(Standard on Titanium, Titanium
X, ST2 & ST3)

See more in front and behind.

Fiesta's optional **built-in navigation system** eliminates the need for pre-route planning, by responding to real time road speed and traffic conditions to deliver more accurate estimated arrival times and trip information. Select reverse gear and the optional **rear-view camera** activates automatically in the Sony or navigation display, allowing you to see objects behind your car. (Option requires Sony Radio or Navigation)



Did someone say “fun”?

With a **182 PS 1.6 EcoBoost** turbocharged engine, exceptional handling and six-speed transmission, the sensational new **Fiesta ST** is born to lead. Its enhanced **Torque Vectoring Control** system is designed to put power on the road and help you maintain control. While the new **Electronic Stability Control system**, with three selectable settings, lets you choose precisely the amount of assistance you want the car to provide to match your driving style. For fast, safe, confidence-inspiring fun, nothing else comes close.

*With time-limited overboost.

ST

182 PS. 240 Nm (290 Nm*).
0-62 mph 6.9 s.



Fiesta series



Style

Key Exterior Features

- 15" 12-spoke wheel cover
- Body colour power door mirrors
- Body colour door handles
- Body colour rear spoiler
- Chrome upper grille
- Ford Easy-Fuel capless refuelling system
- Headlight courtesy delay
- Hill Start Assist
- Tyre Pressure Monitoring System

Bodystyles: 3- and 5-door

Engines:

Petrol

Duratec (60/82 PS)

Diesel

Duratorq (75 PS), ECONetic (95 PS)

Zetec

Key Exterior Features additional to Style

- 15" 5x2-spoke alloy wheels
- Front fog lights with chrome ring surround
- Quickclear heated windscreen
- Chrome finish on upper door line

Bodystyles: 3- and 5-door

Engines:

Petrol

1.0 (80 PS), EcoBoost (100 PS), Duratec (82 PS/105PS),

Diesel

Duratorq (75 PS), ECONetic (95 PS)

Zetec S

Key Exterior Features additional to Style

- 16" 12-spoke alloy wheels
- Full bodystyling kit
- Front fog lights with sports bezel
- Black upper and lower sports grille
- Large body colour rear spoiler
- Sports suspension
- Quickclear heated windscreen

Bodystyle: 3-door

Engines:

Petrol

EcoBoost (125 PS)

Diesel

Duratorq (95 PS)

Titanium

Key Exterior Feature additional to Zetec

- 16" 15-spoke alloy wheels
- Power-foldable door mirrors with puddle lights
- LED day running lights
- Automatic headlights
- Rain-sensing wipers
- Rear privacy glass

Bodystyles: 3- and 5-door

Engines:

Petrol

1.0 (80 PS), EcoBoost (100/125 PS), Duratec (105 PS)

Diesel

Duratorq (75PS), ECONetic (95 PS)



Titanium X

Key Exterior Features additional to Titanium

- 16" 12-spoke alloy wheels
- Rear parking distance sensors
- Ford KeyFree System

Bodystyles: 3- and 5-door

Engines:

Petrol

EcoBoost (100/125 PS)

Diesel

Duratorq (95 PS)



ST-1

Key Exterior Features

- 17" ST alloy wheels
- ST full bodystyling kit and rear spoiler
- Chrome dual exhaust pipe
- Front and rear disc brakes
- ST suspension with 15-mm lowered ride height

Bodystyle: 3- door Engine: Petrol 1.6 EcoBoost (182 PS)

ST-2

Key Exterior Features additional to ST-1

- Halogen projector-style headlights with LED day running lights
- Privacy glass

ST-3

Key Exterior Features additional to ST-2

- Ford KeyFree System
- Automatic headlights
- Rain sensing wipers





Style

Key Interior Features

- Manual air conditioning
- MyKey
- Radio/CD with AUX input, USB connection and six speakers
- Electrically-operated front windows with 'one shot' up and down and anti-trap technology on driver and passenger side
- Remote central locking

Zetec

Key Interior Features Additional to Style

- Ford Sync with Emergency Assistance
- 3-spoke leather trimmed steering wheel
- Leather-trimmed handbrake handle
- Flow through centre console
- Trip computer
- Ambient lighting

Zetec S

Key Interior Features Additional to Style

- Ford Sync with Emergency Assistance
 - Sports style front seats
 - Sport Pedals
 - Perimeter Alarm
 - Centre console with armrest & illuminated cupholders
 - 3-spoke leather trimmed steering wheel
 - Leather trimmed handbrake handle
- (Sport pedal design may vary from that shown)**

Titanium

Key Interior Features Additional to Zetec

- Sony DAB Digital Radio/CD with eight speakers
- Cruise control
- Electronic Automatic Temperature Control (EATC)
- Auto-dimming rear-view mirror
- Centre console with armrest & illuminated cupholders
- Perimeter Alarm
- Front and rear floor mats

(Image shown includes optional parking sensors)





Titanium X

Key Interior Features Additional to Titanium

- Partial leather heated seats in Charcoal Black with Silver fabric
- Rear view camera
- Ford KeyFree System including Ford Power Starter Button
- Electric rear windows (5 door only)
- Rear centre head restraint
- Scuff plates

ST-1



Key Interior Features

- DAB Digital Radio/CD with six speakers
- SYNC with Emergency Assistance
- Recaro cloth seats
- MyKey® technology
- Leather trimmed ST steering wheel and gearshift knob with red stitching
- Front and rear floor mats

ST-2

Standard features include

- Sony Digital DAB Radio/CD with eight speakers
- Partial leather Recaro seats
- Heated front seats
- Ford Power Starter Button

ST-3

Key Interior Features additional to ST-2

- Sony DAB Radio/CD with Navigation system
- Electronic Automatic Temperature Control (EATC)
- Cruise Control
- Auto dimming rear view mirror

Image shows ST-2 with optional EATC
(Sport pedal design may vary from that shown)



ST

Find extra pleasure in the small details.

Cruise Control

With steering wheel-mounted controls for extra comfort and convenience (Standard on Titanium, Titanium X & ST-3)



Ford KeyFree System with Ford Power Starter Button

Start the car and lock or unlock the doors without ever holding the key. Just keep the key fob with you in your pocket or bag. (Standard on Titanium X, ST-3 and an option on Zetec S, Titanium & ST-2)

Electrically-operated and heated door mirrors with side indicators

(Standard)



Ambient lighting

A soft red glow discreetly highlights the interior of your Ford Fiesta. (Standard on Zetec, Titanium, Titanium X and all ST series) (Illuminated cupholder standard on Zetec S, Titanium, Titanium X & ST series)



Frozen White
Solid body colour*



Race Red
Solid body colour



Blazer Blue
Solid body colour



Moondust Silver
Metallic body colour*



Hot Mustard
Metallic body colour*



Fashionista
Metallic body colour*



Midnight Sky
Metallic body colour*



Panther Black
Metallic body colour*



Copper Pulse
Metallic body colour*



Deep Impact Blue
Metallic body colour*



Spirit Blue
Metallic body colour*



Candy Blue
Special metallic body colour*



Hot Magenta
Special metallic body colour*



Molten Orange
Special metallic body colour*

More than just colour.

Ford Fiesta owes its beautiful and durable exterior to a special multi-stage painting process. From the wax-injected steel body sections to the water-based top coat, new materials and application processes ensure it's not only virtually solvent-free, but will retain its good looks for many years to come.

The Ford Fiesta is covered by the Ford Perforation Warranty for 12 years from the date of first registration. Subject to terms and conditions.

Note The car images used are to illustrate body colours only and may not reflect current specification or product availability in certain markets. Colours and trims reproduced within this brochure may vary from the actual colours, due to the limitations of printing processes used.

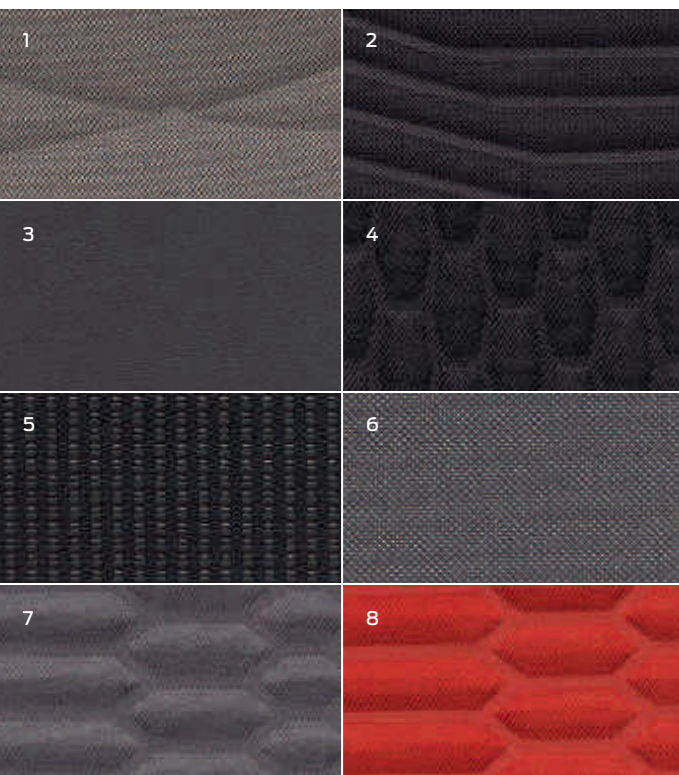
*At extra cost.

A feel for comfort.

Left: Molten Orange with partial Torino leather in Charcoal Black for ST-2 & ST-3

1. Match Point in Charcoal Black for Style
2. Lithos in Charcoal Black for Zetec/Titanium
3. Modena leather in Charcoal Black - Optional on Zetec S, Titanium & Titanium X
4. Ultimate/Lux soft in Charcoal Black for Zetec S
5. Smitty Tech in Silver/Black for Titanium X
6. Silverstone Gray with Charcoal Black seat fabric for ST-1
7. Smoke Storm with partial Torino leather in Charcoal Black for ST-2 & ST-3
8. Molten Orange with partial Torino leather in Charcoal Black for ST-2 & ST-3

For more trims, please refer to the specification table on page 70.





Wheels



14" 5x2-spoke alloy wheel
(Standard on Zetec & Titanium ECONetic.
Also available as an accessory)



15" 5x2-spoke alloy wheel
(Standard on Zetec & available as an
accessory)



16" 7x2-spoke alloy wheel
(Option on Zetec & available as an
accessory)



16" 12-spoke alloy wheel
(Standard on Zetec S)

	Studio	Style	Zetec	Zetec S	Titanium	Titanium X	ST-1	ST-2	ST-3
Wheels									
Steel – 14"x5.5", 6-spoke wheel covers. (Fitted with 175/65 tyres)*	●	-	-	-	-	-	-	-	-
Steel – 14"x5.5", 12-spoke wheel covers. (Fitted with 175/65 tyres)* (Standard on Style with 1.6 Duratorq TDCi ECONetic with Auto-Start-Stop)	-	/E	-	-	-	-	-	-	-
Steel – 15"x6", 12-spoke wheel covers* (Fitted with 195/55 tyres)* (Not available on ECONetic with 1.6 Duratorq TDCi with Auto-Start-Stop)	-	●	-	-	-	-	-	-	-
Alloy – 14"x5.5", 5x2-spoke. (Fitted with 175/65 tyres)* (Standard on Zetec and Titanium with 1.6 Duratorq TDCi ECONetic with Auto-Start-Stop)	-	-	/E	-	/E	-	-	-	-
Alloy – 15"x6", 5x2-spoke. (Fitted with 195/55 tyres)* (Not available on ECONetic with 1.6 Duratorq TDCi with Auto-Start-Stop)	(See above)	-	●	-	-	-	-	-	-
Alloy – 16"x6.5", 7x2-spoke. (Fitted with 195/50 tyres)* (Not available on ECONetic with 1.6 Duratorq TDCi with Auto-Start-Stop)	(See above)	-	○	-	-	-	-	-	-
Alloy – 16"x6.5", 12-spoke. (Fitted with 195/50 tyres)*	(See page 31)	-	-	●	-	-	-	-	-
Alloy – 16"x6.5", 15-spoke. (Fitted with 195/50 tyres)* (Not available on ECONetic with 1.6 Duratorq TDCi with Auto-Start-Stop)	(See page 4)	-	-	-	●	-	-	-	-
Alloy – 16"x6.5", 12-spoke. (Fitted with 195/50 tyres)*	(See page 2)	-	-	-	-	●	-	-	-
Alloy – 17"x7", 8-spoke. (Fitted with 205/40 tyres)* (Not available with Powershift Transmission & ECONetic with 1.6 Duratorq TDCi with Auto-Start-Stop)	(See page 33)	-	-	-	○	○	-	-	-
Alloy – 17"x7 5-spoke. (Fitted with 205/40 tyres)*	(See page 29)	-	-	-	-	-	●	●	●
Alloy – 17"x7 5-spoke Rado Grey (Available as part of ST Style Pack) (Fitted with 205/40 tyres)*							□	□	□
Tyre mobility kit (Not available with spare wheel)	●	●	●	●	●	●	●	●	●
Spare – 14"x5.5" steel (not available with detachable tow bar) (Standard with 1.6 Duratorq TDCi ECONetic with Auto-Start-Stop)	○	○/E	○/E	○	○/E	○	-	-	-
ST Spare Wheel – 15" x 4"	-	-	-	-	-	-	○	○	○
Locking wheel nuts (only with alloy wheels)	-	-	●	●	●	●	●	●	●

● = Standard, ○ = Option, at extra cost, □ = Part of an option pack, at extra cost, /* = Not available with City Pack, /# = Not available with front parking sensors, /E = Standard with ECONetic models
*The wheel you choose will be fitted with the tyre size noted, but no choice of tyre brand is available.



Obsessively driven
During its development, we test drove the Ford Fiesta the equivalent of 87 times around the globe. It's a car you can rely on, right down to the smallest ball bearing.



Quickclear heated windscreen

Halogen projector lights with LED day running lights

Chrome front grille surround

Front fog lights with chrome surround

Exterior features

Exterior Design features

	Studio	Style	Zetec	Zetec S	Titanium	Titanium X	ST-1	ST-2	ST-3
Door mirrors – Electrically-operated and heated, integrated side indicator, black housings	●	-	-	-	-	-	-	-	-
Door mirrors – Electrically-operated and heated, integrated side indicator, body colour housings	-	●	●	●	-	-	●	●	-
Door mirrors – Electrically-operated and heated, power-foldable, integrated side indicator, body colour housings with puddle lights (see Option Packs)	-	□	□	□	●	●	-	□	●
Bumpers – Front and rear, body colour	●	●	●	●	●	●	●	●	●
Rear spoiler – Body colour	●	●	●	-	●	●	-	-	-
Full Bodystyling Kit with large rear spoiler (3 door or 5 door, not available with 1.6 Duratorq TDCI ECONetic with Auto-Start-Stop)	-	-	○/*	●	○/*	○/*	-	-	-
ST Full Bodystyling Kit with large rear spoiler	-	-	-	-	-	-	●	●	●
Front upper grille – Chrome finish surround	●	●	●	-	●	●	-	-	-
Front upper grille insert – Chrome bars	●	●	●	-	●	●	-	-	-
Front upper grille insert – Black mesh	-	-	-	●	-	-	-	-	-
ST Front upper grille insert – High Gloss Black Mesh	-	-	-	-	-	-	●	●	●
Front lower grille insert & surround – Black	●	●	●	-	●	●	-	-	-
Front lower grille – Black Mesh	-	-	-	●	-	-	-	-	-
ST Front lower grille insert – Black	-	-	-	-	-	-	●	●	●
Front fog lights – Black bezel rings	-	-	-	●	-	-	●	●	●
Front fog lights – Chrome finish bezel rings	-	-	●	-	●	●	-	-	-
Tinted Glass	●	●	●	●	-	-	●	-	-
Rear privacy glass	-	○	○	○	●	●	○	●	●
Door handles – Black colour	●	-	-	-	-	-	-	-	-
Door handles – Body colour	-	●	●	●	●	●	●	●	●
Tailgate handle – Body colour	●	●	●	●	-	-	●	●	●
Tailgate handle – Body colour with chrome finisher	-	-	-	-	●	●	-	-	-
Chrome finish on upper door line	-	-	●	-	●	●	-	-	-
Chrome tipped dual exhaust pipe	-	-	-	-	-	-	●	●	●

● = Standard, ○ = Option, at extra cost, □ = Part of an option pack, at extra cost, /* = Not available with City Pack, /* = Not available with front parking sensors, /E = Standard with ECONetic models
*The wheel you choose will be fitted with the tyre size noted, but no choice of tyre brand is available.

Puddle Lights

Illuminate the ground by your vehicle when you unlock your car door to highlight any puddles that you may inadvertently step into. (Standard on Titanium, Titanium X & ST3).



Exterior features

	Studio	Style	Zetec	Zetec S	Titanium	Titanium X	ST-1	ST-2	ST-3
Exterior convenience features									
Ford Easy-Fuel capless refuelling system with misfuel inhibit	●	●	●	●	●	●	●	●	●
Parking distance sensors - Rear	-	□	□	□	□	●	-	○	○
Headlights – Automatic headlights (includes autowipers & auto dimming rear view mirror)	-	-	-	○	●	●	-	○	●
Headlights – Twin chamber halogen reflector with Black bezel and day running lights	●	●	-	-	-	-	-	-	-
Headlights – Halogen projector with Silver bezel and day running lights	-	-	●	●	-	-	●	-	-
Headlights – Halogen projector with Silver bezel and LED day running lights	-	-	-	-	●	●	-	●	●
Headlights – Courtesy delay	●	●	●	●	●	●	●	●	●
Tailgate wash/wipe	●	●	●	●	●	●	●	●	●
Wipers – Front, variable intermittent	●	●	●	●	-	-	●	●	-
Wipers – Front, automatic with rain sensor (includes automatic headlights and auto-dimming rear-view mirror)	-	-	-	○	●	●	-	○	●
Quickclear Heated Windscreen	-	○	●	●	●	●	●	●	●
High-mounted rear brake light	●	●	●	●	●	●	●	●	●

● = Standard, ○ = Option, at extra cost, □ = Part of an option pack, at extra cost, /* = Not available with City Pack, /# = Not available with front parking sensors, /E = Standard with ECOnetic models

Clever features that save time and hassle

Capless refuelling with Ford Easy Fuel

No dirty fuel caps to touch. Plus Ford Easy Fuel with its unique safeguard ensures nobody accidentally fills up with the wrong fuel. (Standard)

Option packs

	Studio	Style	Zetec	Zetec S	Titanium	Titanium X	ST-1	ST-2	ST-3
Option packs									
City Pack – Rear parking distance sensors and electric/heated power-foldable door mirrors with puddle lamps	-	○	○	○	○	●	-	-	-
Front and Rear Parking Pack – Front and rear parking distance sensor and electric/heated power-foldable door mirrors with puddle lamps	-	○/*	○/*	-	○/*	○/*	-	-	-
Convenience Pack - Keyless Entry, Ford Power Starter Button and Powerfold door mirrors	-	-	-	○	○	●	-	-	-
ST Convenience Pack – Keyless Entry and powerfold mirrors	-	-	-	-	-	-	-	○	●
ST Style Pack – 17" Rado grey alloy wheels, illuminated scuff plates and red brake callipers	-	-	-	-	-	-	○	○	○

● = Standard, ○ = Option, at extra cost, □ = Part of an option pack, at extra cost, /* = Not available with City Pack, /# = Not available with front parking sensors, /E = Standard with ECOnetic models

Choices that make a statement



Full Bodystyling Kit

Make a statement with this styling kit, perfectly designed to complement your Ford Fiesta and make it stand out from the crowd. (Option on Zetec, Titanium & Titanium X) (Standard on Zetec S). Also available separately as accessories.

- Front, rear and side skirts in body colour
- Rear spoiler in body colour
- Black rear bumper diffuser



Interior features

	Studio	Style	Zetec	Zetec S	Titanium	Titanium X	ST-1	ST-2	ST-3
Interior Design Features									
Door lever – Chrome finish	-	●	●	●	●	●	●	●	●
Floor mats – Front and rear, velour	-	-	-	-	●	●	-	-	-
Floor mats – Front and rear, carpet with double stitching	-	-	-	-	-	-	●	●	●
Gearshift knob – Soft-feel	●	-	-	-	-	-	-	-	-
Gearshift knob with chrome finish bezel	-	●	-	-	-	-	-	-	-
Gearshift knob – Leather-trimmed with chrome finish bezel	-	-	●	●	●	●	-	-	-
Gearshift knob – Unique ST design, leather trimmed	-	-	-	-	-	-	●	●	●
Headliner – Moulded	●	●	-	-	-	-	-	-	-
Headliner – Woven	-	-	●	●	●	●	-	-	-
Headliner – Woven (Dark)	-	-	-	-	-	-	●	●	●
Leather-trimmed handbrake	-	-	●	●	●	●	●	●	●
Sport pedal set	-	-	-	●	-	-	●	●	●
Scuff plates – Front, stainless steel	-	-	-	-	-	●	-	-	-
Scuff plates – Front, stainless steel with ST logo	-	-	-	-	-	-	●	●	●
Steering wheel – 3-spoke	●	●	-	-	-	-	-	-	-
Steering wheel – 3-spoke, leather-trimmed	-	-	●	●	●	●	-	-	-
Steering wheel – 3-spoke, leather trimmed with ST logo	-	-	-	-	-	-	●	●	●

● = Standard, ○ = Option, at extra cost, □ = Part of an option pack, at extra cost, /E = Standard with ECOnetic Engines

Spend your driving time surrounded in luxury

Stainless steel Scuff Plates

Elegant stainless steel scuff plates add a premium feel as well as protecting your paintwork. (Standard on Titanium X and available as an accessory)

Connect with your world

A choice of superb audio, navigation and entertainment systems, with built-in connectivity for your gadgets, lets you fill your Fiesta with your favourite music and connect to the outside world.



Remote audio controls

Your hands on the wheel and your MP3 on the right track. (Remote audio controls shown left are standard)

Shown right: Sony DAB digital radio/CD with 4.2" TFT colour multi-functional display

MP3-compatible with eight speakers (four front and four rear coaxial), remote audio controls, AUX and USB connection for external music devices and Ford SYNC including Ford Emergency Assistance, featuring hands-free Bluetooth® -enabled Voice Control System, audio streaming and DAB technology. (Standard on Titanium, Titanium X, ST-2 & ST-3)

Rear-view camera is a separate option that can be ordered in combination with Sony audio and navigation systems. (Standard on Titanium X and optional on Titanium)

USB connection

Built-in connectivity lets you listen to, and operate, your digital music player via the car's Ford audio system.

Note The Bluetooth® word mark and logos are owned by the Bluetooth SIG, Inc. and any use of such marks by Ford Motor Company Limited and its associated companies is under licence. Other trademarks and trade names are those of their respective owners.





Interior features

Audio and communication systems

Radio/CD with multi-functional 2-line display, six speakers (four front and two rear), MP3-compatible, remote audio controls, AUX and USB connection for external music devices

Radio/CD with multi-functional matrix display, six speakers (four front and two rear), MP3-compatible, remote audio controls. **Ford SYNC** – Includes Emergency Assistance*, Bluetooth® hands-free phone and Voice Control, USB, AUX and USB connection for external music devices

Radio/CD with DAB with multi-functional matrix display, six speakers (four front and two rear), MP3-compatible, remote audio controls. **Ford SYNC** – Includes Emergency Assistance*, Bluetooth® hands-free phone and Voice Control, USB, AUX and USB connection for external music devices, diversity antenna

Radio/CD/SD-navigation system with DAB, 5" TFT display, MP3-compatible, six speakers (four front and two rear), remote audio controls, **Ford SYNC** – Includes Emergency Assistance*, Bluetooth® hands-free phone and Voice Control, USB, AUX and USB connection for external music devices, diversity antenna

Sony radio/CD with DAB, 4.2" TFT display, MP3-compatible, eight speakers (four front and four rear), remote audio controls, **Ford SYNC** – Includes Emergency Assistance*, Bluetooth® hands-free phone and Voice Control, USB, AUX and USB connection for external music devices, diversity antenna

Sony radio/CD/SD-navigation system with DAB, 5" TFT display MP3-compatible, eight speakers (four front and four rear), remote audio controls, **Ford SYNC** – Includes Emergency Assistance*, Bluetooth® hands-free phone and Voice Control, USB, AUX and USB connection for external music devices, diversity antenna

Climate control

Air conditioning – Manual control

Air conditioning – Electronic Automatic Temperature Control (EATC)

Pollen filter

Interior Comfort and Convenience

Accessory power point (12 V) – Front

Centre console – With trinket tray, two cup holders

Centre console – With trinket tray, two illuminated cupholders with chrome accent ring, front centre armrest

Ambient Lighting

Footwell lights – Driver and Passenger

Courtesy light – Overhead with theatre-style dimming

Courtesy light – Front with front map-reading lights

Courtesy light – Rear

Glovebox – With illumination

Cruise control

My Key® – See Page 22

Rear-view camera (requires Sony radio/CD or navigation)

Rear-view mirror – Auto-dimming (only available with automatic rain-sensing wipers)¹

Trip computer

Windows – Electrically-operated front with one-touch lowering/closing on driver's and passenger's side

Windows – Electrically-operated front and rear, global opening/closing (5-door only)

● = Standard, ○ = Option, at extra cost, □ = Part of an option pack, at extra cost, /E = Standard with ECOnetic Engines

The Bluetooth® word mark and logos are owned by the Bluetooth SIG, Inc. and any use of such marks by Ford Motor Company and its associated companies is under licence. Other trademarks and trade names are those of their respective owners.

*Ford Emergency Assistance operates in over 30 European countries. This feature works when paired with a compatible connected mobile phone that is with you when an airbag is deployed (excludes knee airbags and rear inflatable safety belts, if equipped) or the fuel pump shut off switch is activated. See your local Ford website for latest information. SYNC AppLink is available from Summer 2014 production.

	Studio	Style	Zetec	Zetec S	Titanium	Titanium X	ST-1	ST-2	ST-3
Radio/CD with multi-functional 2-line display, six speakers (four front and two rear), MP3-compatible, remote audio controls, AUX and USB connection for external music devices	●	●	-	-	-	-	-	-	-
Radio/CD with multi-functional matrix display, six speakers (four front and two rear), MP3-compatible, remote audio controls. Ford SYNC – Includes Emergency Assistance*, Bluetooth® hands-free phone and Voice Control, USB, AUX and USB connection for external music devices	-	○	●	●	-	-	-	-	-
Radio/CD with DAB with multi-functional matrix display, six speakers (four front and two rear), MP3-compatible, remote audio controls. Ford SYNC – Includes Emergency Assistance*, Bluetooth® hands-free phone and Voice Control, USB, AUX and USB connection for external music devices, diversity antenna	-	○	○	○	-	-	●	-	-
Radio/CD/SD-navigation system with DAB, 5" TFT display , MP3-compatible, six speakers (four front and two rear), remote audio controls, Ford SYNC – Includes Emergency Assistance*, Bluetooth® hands-free phone and Voice Control, USB, AUX and USB connection for external music devices, diversity antenna	-	○	○	○	-	-	○	-	-
Sony radio/CD with DAB, 4.2" TFT display , MP3-compatible, eight speakers (four front and four rear), remote audio controls, Ford SYNC – Includes Emergency Assistance*, Bluetooth® hands-free phone and Voice Control, USB, AUX and USB connection for external music devices, diversity antenna	-	-	-	-	●	●	-	●	-
Sony radio/CD/SD-navigation system with DAB, 5" TFT display MP3-compatible, eight speakers (four front and four rear), remote audio controls, Ford SYNC – Includes Emergency Assistance*, Bluetooth® hands-free phone and Voice Control, USB, AUX and USB connection for external music devices, diversity antenna	-	-	-	-	○	○	-	○	●
Climate control									
Air conditioning – Manual control	-	●	●	●	-	-	●	●	-
Air conditioning – Electronic Automatic Temperature Control (EATC)	-	-	-	○	●	●	-	○	●
Pollen filter	●	●	●	●	●	●	●	●	●
Interior Comfort and Convenience									
Accessory power point (12 V) – Front	●	●	●	●	●	●	●	●	●
Centre console – With trinket tray, two cup holders	●	●	●	-	-	-	-	-	-
Centre console – With trinket tray, two illuminated cupholders with chrome accent ring, front centre armrest	-	-	-	●	●	●	●	●	●
Ambient Lighting	-	-	●	-	●	●	●	●	●
Footwell lights – Driver and Passenger	-	-	●	●	●	●	●	●	●
Courtesy light – Overhead with theatre-style dimming	●	●	●	●	●	●	●	●	●
Courtesy light – Front with front map-reading lights	-	-	●	●	●	●	●	●	●
Courtesy light – Rear	●	●	●	●	●	●	●	●	●
Glovebox – With illumination	●	●	●	●	●	●	●	●	●
Cruise control	-	-	-	○	●	●	-	○	●
My Key® – See Page 22	-	●	●	●	●	●	●	●	●
Rear-view camera (requires Sony radio/CD or navigation)	-	-	-	-	○	●	-	-	-
Rear-view mirror – Auto-dimming (only available with automatic rain-sensing wipers) ¹	-	-	-	□	●	●	-	□	●
Trip computer	-	○/E	●	●	●	●	●	●	●
Windows – Electrically-operated front with one-touch lowering/closing on driver's and passenger's side	●	●	●	●	●	●	●	●	●
Windows – Electrically-operated front and rear, global opening/closing (5-door only)	-	-	○	-	○	●	-	-	-

Interior features

	Studio	Style	Zetec	Zetec S	Titanium	Titanium X	ST-1	ST-2	ST-3
Seats									
Front seats – Comfort-style	●	●	●	-	●	-	-	-	-
Front seats – Sports-style	-	-	-	●	-	-	-	-	-
Front seats – Sports-style (Partial leather seats)	-	-	-	-	-	●	-	-	-
Front seats – Recaro (Fabric)	-	-	-	-	-	-	●	-	-
Front seats – Recaro (Partial Leather)	-	-	-	-	-	-	-	●	●
Front seats – 2-way adjust head restraints	●	●	●	●	●	●	●	●	●
Front seats – Heated	-	-	○	○/□	○/□	●	-	●	●
Front seat – Driver's lumbar support adjustment	-	-	○	●	●	●	-	-	-
Front seat – Driver's manual fore/aft adjustment	●	-	-	-	-	-	-	-	-
Front seat – Driver's manual height and fore/aft adjustment	-	●	●	●	●	●	●	●	●
Front seat – Passenger's manual fore/aft adjustment	●	●	●	●	●	●	-	-	-
Front seat – Passenger's manual height and fore/aft adjustment	-	-	-	-	-	-	●	●	●
Rear seat – 60/40 split folding back and fixed cushion	●	●	●	●	●	●	●	●	●
Rear seat – Centre head restraints	-	○	○	○/□	○/□	●	○	○	○
Rear seats back – Carpet	●	●	●	●	●	●	●	●	●
Front and passenger seat map pockets	-	●	●	●	●	●	●	●	●
Leather Trim Pack – Leather trim, heated front sport seats, driver's seat lumbar support, centre rear head restraint	-	-	-	□	□	□	-	-	-
Loadspace									
Loadspace floor carpet	●	●	●	●	●	●	●	●	●
Loadspace compartment light	●	●	●	●	●	●	●	●	●
First aid kit strap and warning triangle storage	●	●	●	●	●	●	●	●	●
Removable package tray	●	●	●	●	●	●	●	●	●
Adjustable load floor in luggage compartment (eliminates first aid kit strap and warning triangle storage)	-	○	○	○	○	○	○	○	○

● = Standard, ○ = Option, at extra cost, □ = Part of an option pack, at extra cost, /E = Standard with ECOnetic Engines

An interior space built for comfort and flexibility



Adjustable load floor

The adjustable rear load floor can be fitted in two positions, either low on the boot floor to create a deeper boot space, or higher up to create a flatter load space with the rear seats lowered. It can also be removed completely. (Option)

Smart technology

Fiesta has a range of intelligent features designed to make life a little easier and offer peace of mind.

1 Active City Stop**

Designed to help reduce the likelihood or consequences of your car colliding with the vehicle in front in slow-moving traffic by applying the brakes if it is detected that a collision is likely. (Option) (Only available with 1.0 Petrol or Diesel Engines)

2 Parking distance sensors

Audible warnings help you park in tight spaces. Available for front and rear, or just rear. (Available as part of optional City Pack or Front and Rear parking sensors pack)

3 Ford SYNC with Emergency Assistance*

The next generation of in-car connectivity. Ford SYNC lets you operate most popular MP3 players, Bluetooth®-enabled phones and USB drives with remarkably simple voice commands. Plus the Ford Emergency Assistance feature is designed to assist occupants to place an emergency call in the event of an accident - wherever you are in Europe. (Standard on Zetec & above)

4 Integrated navigation and rear-view camera

Fiesta's built-in navigation system eliminates the need for pre-route planning. Select reverse gear and the optional rear-view camera comes on automatically in the Sony or navigation display, allowing you to see objects behind your car. (Option)

*Uses sensors.

**Designed to operate at speeds below 19 mph.

*Ford Emergency Assistance operates in over 30 European countries. This feature works when paired with a compatible mobile phone that is with you when any airbag is deployed (excludes knee airbags and rear inflatable safety belts, if equipped) or the fuel pump is shut off switch is activated. Text function and Emergency Assistance not supported by all European languages. See www.Ford.co.uk for the latest information.

Note The Bluetooth® word mark and logos are owned by the Bluetooth SIG, Inc. and any use of such marks by Ford Motor Company Limited and its associated companies is under licence. Other trademarks and trade names are those of their respective owners.

Note It is an offence for drivers to use a hand-held mobile phone or similar device while driving.



Intelligent Protection System[®]

Ford's advanced IPS uses a range of sophisticated technologies designed to keep you protected, including ultra-high strength steel safety cage, anti-lock braking system with Emergency Brake Assist and front, side, knee and curtain airbags.

The Ford Fiesta IPS includes:

1. Driver's and front passenger's airbags and drivers knee airbag
2. Driver's and front passenger's side impact airbags
3. Side curtain airbags for front and rear seats
4. Collapsible steering column and pedals for optimised protection of driver's legs and feet
5. Electronic Stability Program with anti-lock brakes, electronic brake-force distribution and Emergency Brake Assist
6. Robust computer-optimised body structure with ultra-rigid safety cell and crumple zones
7. Pre-tensioners, load-limiting retractors and height-adjustable mounts* on front seat belts
8. Anti-submarining seat bases



Note: A rear-facing child seat should never be placed in the front passenger seat when the Ford vehicle is equipped with an operational front passenger's airbag. The safest place for children is properly restrained on the rear seat.

*Height-adjustable mounts available on 5-door models only.

[®]Uses sensors.

Safety and security equipment

	Studio	Style	Zetec	Zetec S	Titanium	Titanium X	ST	ST2	ST3
Safety and Driver Assistance									
Front Disc, Rear Drum Brakes	●	●	●	●	●	●	-	-	-
Front Disc, Rear Disc Brakes	-	-	-	-	-	-	●	●	●
Intelligent Protection System (IPS) ¹⁾	●	●	●	●	●	●	●	●	●
Anti-lock braking system ¹⁾ with electronic brake-force distribution (EBD) ¹⁾ and Emergency Brake Assist (EBA) ¹⁾	●	●	●	●	●	●	●	●	●
Electronic Stability Control (ESC) ¹⁾	●	●	●	●	●	●	●	●	●
Hill Start Assist ²⁾	●	●	●	●	●	●	●	●	●
Emergency Brake Warning ²⁾ – Automatic flashing of hazard warning lights under heavy braking	●	●	●	●	●	●	●	●	●
Airbags – Driver's and front passenger's ³⁾	●	●	●	●	●	●	●	●	●
Airbag – Front passenger's airbag de-activation switch ⁴⁾ and Passenger Airbag Deactivation Indicator ¹⁾	●	●	●	●	●	●	●	●	●
Airbags – Front side ¹⁾	●	●	●	●	●	●	●	●	●
Airbags – Curtain, driver side knee airbag ¹⁾	●	●	●	●	●	●	●	●	●
Active City Stop ¹⁾ (only available with 1.0 petrol and all diesel engines)	-	-	○	○	○	○	-	-	-
Security									
Engine Immobiliser – Passive Anti-Theft System (PATS)	●	●	●	●	●	●	●	●	●
Central locking	●	-	-	-	-	-	-	-	-
Remote central locking with one flip key and one lollipop key	-	●	-	-	-	-	-	-	-
Remote central locking with two flip keys	-	-	●	●	●	-	●	-	-
Remote central locking with two key fobs	-	-	-	-	-	●	-	●	●
Double locking	-	●	●	●	●	●	●	●	●
Ford Power Starter Button	-	-	-	□	□	●	-	●	●
Ford Keyfree System - Keyless entry	-	-	-	□	□	●	-	□	●
Perimeter alarm	-	○	○	●	●	●	-	-	-
Thatcham Category 1 alarm	-	-	-	-	-	-	●	●	●

● = Standard, ○ = Option, at extra cost, □ = Part of an option pack, at extra cost. ¹⁾Safety feature, ²⁾Driver assistance

***Note: A child seat should never be placed in the front passenger seat when the Ford vehicle is equipped with an operational front passenger's airbag. The safest place for children is properly restrained on the rear seat.**



Hill Start Assist

Designed to prevent you from rolling down a slope when you move your foot from the brake pedal to the accelerator pedal. It works in forward and reverse gears. (Standard)

Mechanical features

	Studio	Style	Zetec	Zetec S	Titanium	Titanium X	ST-1	ST-2	ST-3
Steering									
Electric power-assisted steering (EPAS)	●	●	●	●	●	●	●	●	●
Steering wheel column – Rake- and reach-adjustable	●	●	●	●	●	●	●	●	●
Suspension									
Suspension – Standard tune	●	●/1	●/1	-	●/1	●	-	-	-
Suspension – Sports suspension	-	-	-	●	-	-	-	-	-
Suspension – ST Suspension (Lowered ride height)	-	-	-	-	-	-	●	●	●
Suspension – Lowered (standard only with 1.6 TDCi EcoNetic with Auto-Start-Stop)	-	/E	/E	-	/E	-	-	-	-
Suspension – Front stabiliser bar	●	●	●	●	●	●	●	●	●
Technology									
Ford Eco Mode (driver information system) – Only in combination with audio system and trip computer	-	○/E	●	●	●	●	-	-	-
Shift gear indicator – Not available with 1.6 105PS Powershift Engine	●	●	●	●	●	●	●	●	●

● = Standard, ○ = Option, at extra cost. ●/1 Not available with EcoNetic Powertrain, /E Standard with EcoNetic Powertrain

Sports suspension

(Standard on Zetec S)

Ford Auto-Start-Stop

Designed to automatically shut down the engine to save fuel when standing still. When you want to drive off, the engine immediately restarts. (Only available on 1.0 EcoBoost and 1.6 Duratorq EcoNetic engines)



Fuel, performance and emissions

The fuel economy figures quoted in the table below are achieved by following strict EU governed test procedures and are specifically designed to enable customers to compare vehicles from all manufacturers on a like-for-like basis. Fuel consumption is directly affected by the length of the journey; number of passengers and amount of luggage carried; individual driving style; road and traffic conditions; weather conditions; vehicle age, mileage, condition and standard of maintenance; use of vehicle features such as air conditioning; and any modifications to the vehicle such as the addition of a roof rack. Your fuel economy will vary based on these and other factors and, for these reasons, many drivers may not achieve the EU fuel economy figures (below) in day-to-day driving, although the vehicle is technically capable of doing so.

	Euro Stage	Transmission	Maximum Power PS (kW)	Torque Nm	CO ₂ emissions (g/km) ⁹⁰	Fuel consumption (MPG) ⁸⁹			Performance ⁹		
						Urban	Extra Urban	Combined	Max. speed (mph)	0-62 mp/h (secs)	31-62 mp/h* (secs)
1.0 L (80 PS (59 kW)) with Auto-Start-Stop	Euro Stage V	M5	80 (59)	105	99	5.1 (55.4)	3.8 (74.3)	4.3 (65.7)	103	14.9	17.9
1.0 EcoBoost (100 PS (74 kW)) with Auto-Start-Stop	Euro Stage V	M5	100 (74)	170	99	5.3 (53.3)	3.7 (76.4)	4.3 (65.7)	112	11.2	14.7
1.0 EcoBoost (100 PS (74 kW)) PowerShift	Euro Stage V	A6	100 (74)	170	114	6.6 (42.8)	3.9 (72.4)	4.9 (57.7)	112	10.8	N/A
1.0 EcoBoost (125 PS (92 kW)) with Auto-Start-Stop	Euro Stage V	M5	125 (92)	200	99	5.3 (53.3)	3.7 (76.4)	4.3 (65.7)	122	9.4	12.2
1.25 Duratec (60 PS (44 kW))	Euro Stage V	M5	60 (44)	109	120	6.8 (41.5)	4.2 (67.3)	5.2 (54.3)	94	16.9	17.9
1.25 Duratec (82 PS (60 kW))	Euro Stage V	M5	82 (60)	114	120	6.8 (41.5)	4.2 (67.3)	5.2 (54.3)	104	13.3	17.6
1.6 Duratec Ti-VCT (105PS (77 kW)) PowerShift	Euro Stage V	A6	105 (77)	150	138	8.4 (33.6)	4.5 (62.8)	5.9 (47.9)	114	10.5	N/A
1.6 EcoBoost (182 PS (134 kW))	Euro Stage V	M6	182 (134)	240/290 ⁹¹	138	7.9 (35.8)	4.8 (58.9)	5.9 (47.9)	139	6.9	6.4
1.5 Duratorq TDCi (75 PS (55 kW))	Euro Stage V	M5	75 (55)	185	98	4.4 (64.2)	3.3 (85.6)	3.7 (76.4)	104	13.5	13.3
1.6 Duratorq TDCi (95 PS (70 kW))	Euro Stage V	M5	95 (70)	200	95	4.4 (64.2)	3.2 (88.3)	3.6 (78.5)	112	11.7	11.4
1.6 Duratorq TDCi ECOnetic with Auto-Start-Stop (95 PS (70 kW))	Euro Stage V	M5	95 (70)	200	85	3.7 (76.4)	3.1 (91.1)	3.3 (85.6)	111	12.9	12.7

*In 4th gear. ⁹Ford test figures. ⁸⁹The declared fuel consumptions and CO₂ emissions are measured according to the technical requirements and specifications of European Directive 80/1268/EEC or the European Regulation (EC) 715/2007 amended by (EC) 692/2008 as last amended. Fuel consumption and CO₂ emissions are specified for a vehicle type and not for a single car. The applied standard test procedure enables comparisons between different vehicle types and different manufacturers. In addition to the fuel efficiency of a car, driving behaviour as well as other non-technical factors are very important in determining a car's fuel consumption and CO₂ emissions. CO₂ is the main greenhouse gas responsible for global warming. A guide on fuel economy and CO₂ emissions which contain data for all new passenger car models is available at any point of sale free of charge or can be downloaded from <http://carfueldata.dft.gov.uk/>. Note all vehicles are Durashift 5-speed manual unless otherwise stated. ⁹¹ Time Limited Overboost.



Ford EcoBoost engines

The coating on the piston rings reduces friction; the turbocharger, direct injection and variable valve timing boost efficiency. The result is remarkable performance from such an economical engine. Winner at the International Engine of the Year Awards 2013, the new 1.0-litre EcoBoost is available in 100 PS and 125 PS versions.

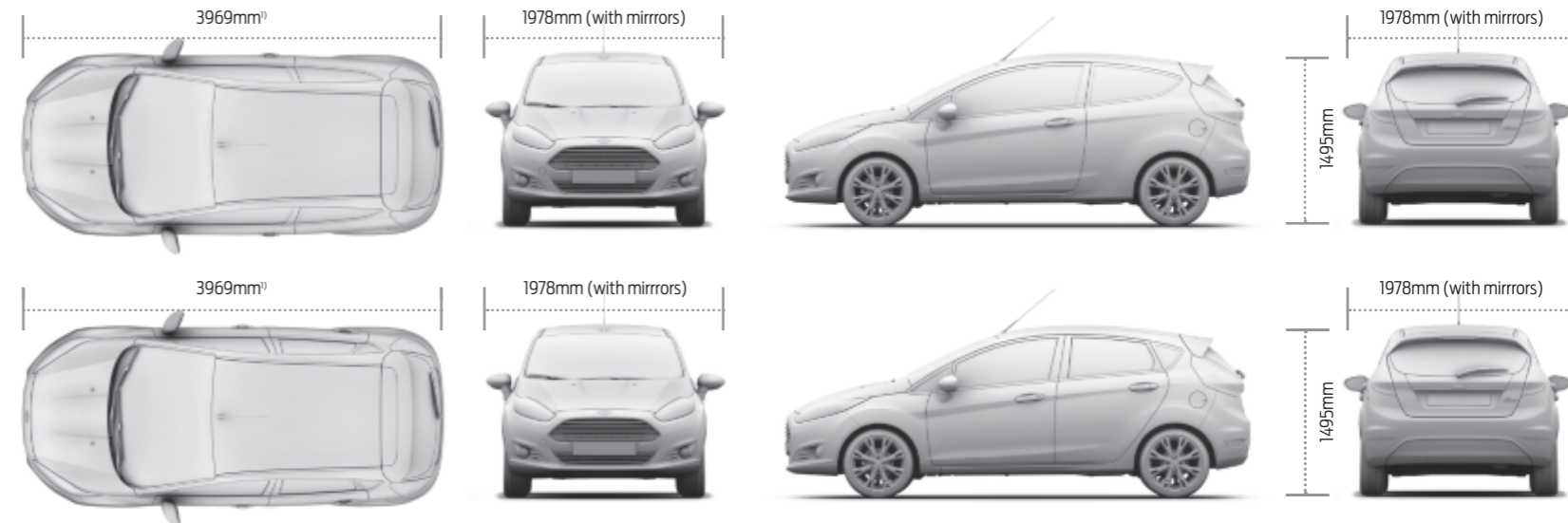


Dimensions

	3 Door	5 Door
Overall length (mm)	3969	3969
Overall length (mm) Zetec S & ST versions (3-Door only)	3982	3982
Overall length (mm) Bumper Styling Kit	3982	3982
Overall width with mirrors (mm)	1978	1978
Overall width without mirrors (mm)	1709	1722
Overall width with folded mirrors (mm)	1764	1764
Overall height (mm) max	1468	1468
Turning circle – Kerb to kerb (m)	10.1	10.1

	3 Door	5 Door
Luggage capacity (litres) [†]		
5-seat mode (with tyre repair kit)	290	290
5-seat mode (with steel spare)	276	276
2-seat mode (with tyre repair kit)	974	974
2-seat mode (with steel spare)	960	960
Fuel tank capacity (litres)		
Petrol	42	42
Diesel	40.5	40.5
ST	48	N/A

[†]Measured in accordance with ISO 3832. Dimensions may vary dependent on the model and equipment fitted.



⁹¹ Overall length is 3982mm on Zetec S/ST Series and when fitted with Bumper styling kit.

Weights and loads

	Kerbweight (kg) ^{#1 Door/Door}	Gross Vehicle Mass (kg)		Max. Towable Mass (braked) (kg) 12%	Max. Towable Mass (unbraked) (kg) 3 Door/5 Door
		3-Door	5-Door		
1.0 Duratec (80 PS (59 kW)) with Auto-Start-Stop	1045/1055	1525	1530	650	520/525
1.0 EcoBoost (100 PS (74 kW)) with Auto-Start-Stop	1091/1101	1550	1555	900	545/550
1.0 EcoBoost (100 PS (74 kW)) PowerShift	1112/1122	1570	1575	900	555/560
1.0 EcoBoost (125 PS (92 kW)) with Auto-Start-Stop	1091/1101	1550	1555	900	545/550
1.25 Duratec (60 PS (44 kW))	1045/1055	1525	1530	500	500/500
1.25 Duratec (82 PS (60 kW))	1045/1055	1525	1530	600	520/525
1.6 Duratec Ti-VCT (105PS (77 kW)) PowerShift	1089/1098	1560	1565	650	540/545
1.6 EcoBoost (182PS (134kW))	1163	1575	N/A	N/A	N/A
1.5 Duratorq TDCi (75 PS (55 kW))	1108/1118	1570	1575	750	550/555
1.6 Duratorq TDCi (95 PS (70 kW))	1108/1118	1570	1575	750	550/555
1.6 Duratorq TDCi ECONetic with Auto-Start-Stop (95 PS (70 kW))	1108/1117	1560	1565	N/A	N/A

*Represents the lightest kerbweight assuming driver at 75 kg, full fluid levels and 90% fuel levels, subject to manufacturing tolerances and options, etc., fitted. **Towing limits** quoted represent the maximum towing ability of the vehicle at its Gross Vehicle Mass to restart on a 12 per cent gradient at sea level. The performance and economy of all models will be reduced when used for towing. **Nose weight limit** is a maximum of 50 kg on all models. **Note** All vehicles are 5-speed manual, unless Powershift stated.

Insurance groups

	Studio	Style	Zetec	Zetec S	Titanium	Titanium X	ST-1	ST-2	ST-3
1.0 Duratec (80 PS (59 kW)) with Auto-Start-Stop			6E		7E				
1.0 EcoBoost (100 PS (74 kW)) with Auto-Start-Stop			11E		11E	11E			
1.0 EcoBoost (100 PS (74 kW)) PowerShift			11E		11E	11E			
1.0 EcoBoost (125 PS (92 kW)) with Auto-Start-Stop				15E	15E	16E			
1.25 Duratec (60 PS (44 kW))	3E	5E							
1.25 Duratec (82 PS (60 kW))		7E	7E						
1.6 Duratec Ti-VCT (105 (77 kW)) PowerShift			12E		12E				
1.6 EcoBoost (182 PS (134 kW))							30E	30E	30E
1.5 Duratorq TDCi (75 PS (55 kW))		8E	9E		9E				
1.6 Duratorq TDCi (95 PS (70 kW))				12E		13E			
1.6 Duratorq TDCi ECONetic with Auto-Start-Stop (95 PS (70 kW))		11E	12E		12E				

E = Exceeds security requirement for model concerned and group rating has been reduced. Insurance ratings are issued by the Association of British Insurers and are shown above in the new 1-50 rating scales.

Roof base carrier, lockable

Lockable base load carrier compatible with a range of attachments. (Accessory)

Thule® roof ski/snowboard carrier Deluxe 727* – lockable and extendable

Innovative, fully-lockable ski carrier suitable for up to six pairs of skis or four snowboards. Comfortable slide-out function extends outside the roof area for easy access to your ski equipment. (Accessory)

Thule® roof box*, lockable

Can be opened from both sides for convenient loading. Available in different sizes, Pacific 200 is shown. (Accessory)

ClimAir® wind deflector*

Reduces turbulence and noise for a more enjoyable drive with the windows down, even during light rain. (Accessory)



*Please see back cover for warranty information.

Colour and trim

Model	Studio	Style	Zetec	Zetec S	Zetec S
Seat trim and colour	Max in Charcoal Black/Soft Charcoal	Match Point in Charcoal Black	Lithos in Charcoal Black	Ultimate/Lux Soft in Charcoal Black	Ultimate/Lux Soft in Charcoal Black
Seat bolster trim and colour	Max in Charcoal Black	View in Charcoal Black with Metal Grey stitching and Machine Silver piping	Domo in Charcoal Black with Metal Grey stitching	Monax/Lux Soft in Soft Charcoal/Charcoal Black with Generic Silver stitching	Monax/Lux Soft in Soft Charcoal/Charcoal Black/Red Hot with Generic Red stitching
Door trim and colour	View in Charcoal Black	View in Charcoal Black	Ambassador in Charcoal Black	Ambassador in Charcoal Black	Ambassador in Charcoal Black
Centre stack bezel	Pegasus	Graphite Anodized	Royal Black	Royal Black	Royal Black
Upper instrument panel/Environment colour	Charcoal Black/Charcoal Black	Charcoal Black/Charcoal Black	Charcoal Black/Charcoal Black	Charcoal Black/Charcoal Black	Charcoal Black/Charcoal Black
Solid body colours					
Blazer Blue	●	●	–	–	–
Frozen White*	*	*	*	*	*
Race Red	●	●	●	●	●
Metallic body colours*					
Copper Pulse	–	–	*	*	–
Fashionista	–	*	*	–	–
Hot Mustard	–	–	*	*	–
Midnight Sky	–	*	*	*	*
Moondust Silver	*	*	*	*	–
Deep Impact Blue	–	*	*	*	–
Panther Black	*	*	*	*	*
Spirit Blue	–	–	–	–	–
Pearlescent body colours*					
Candy Blue	–	–	*	*	–
Hot Magenta	–	*	*	*	–
Molten Orange	–	–	–	–	–

● = Available, * = Option at extra cost, – = Not available

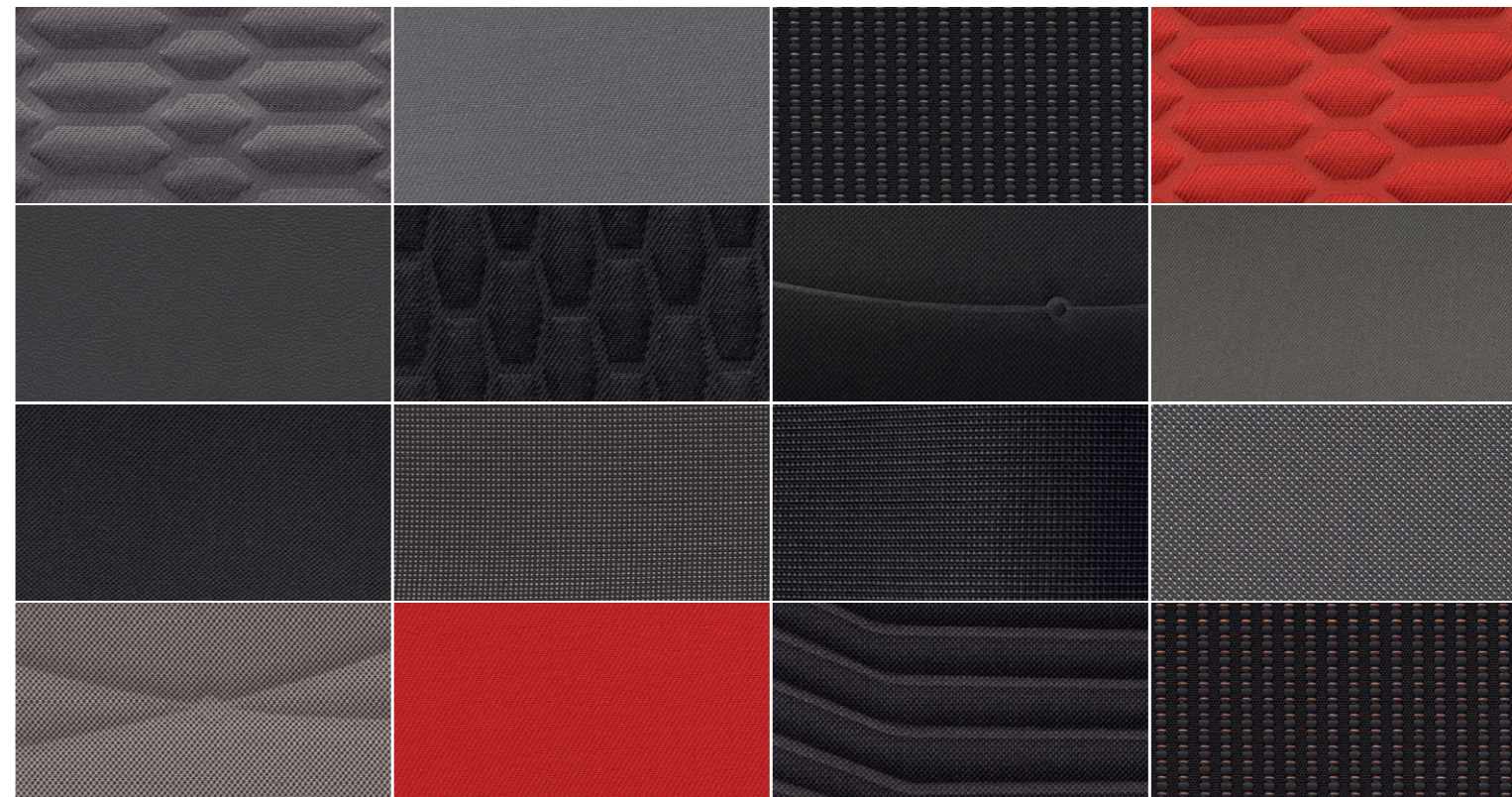
	Titanium	Titanium	Titanium X	ST-1	ST-2/ST-3	ST-2/ST-3	
Modena leather in Metallic Effect*	Litho/s in Charcoal Black	Modena leather in Metallic Effect*	Smitty Tech in Silver/Black	Modena leather in Metallic Effect*	Airfield in Silverstone Grey	Protection in Molten Orange	Protection in Smoke Storm
Modena leather in Charcoal Black with Metal Grey stitching	Domo in Charcoal Black with Metal Grey stitching	Modena leather in Charcoal Black with Metal Grey stitching	Modena leather in Charcoal Black with Metal Grey stitching	Modena leather in Charcoal Black with Metal Grey stitching	Lux Soft in Charcoa Black with Generic Silver stitching	Torino leather in Charcoal Black/Lux Soft in Molten Orange with Molten Orange Stitching	Tornio leather in Charcoal Black/Lux Soft in Smoke Storm with Generic Silver stitching
Ambassador in Charcoal Black	Ambassador in Charcoal Black	Ambassador in Charcoal Black	Ambassador in Charcoal Black	Ambassador in Charcoal Black	Ambassador in Charcoal Black	Ambassador in Charcoal Black	Ambassador in Charcoal Black
Royal Black	Royal Black	Royal Black	Royal Black	Royal Black	Satin Black	Satin Black	Satin Black
Charcoal Black/Charcoal Black	Charcoal Black/Charcoal Black	Charcoal Black/Charcoal Black	Charcoal Black/Charcoal Black	Charcoal Black/Charcoal Black	Charcoal Black/Charcoal Black	Charcoal Black/Charcoal Black	Charcoal Black/Charcoal Black
–	–	–	–	–	–	–	–
*	*	*	*	*	*	*	*
●	●	●	●	●	●	●	●
*	*	*	*	*	–	–	–
–	*	*	*	*	–	–	–
*	*	*	*	*	–	–	–
*	*	*	*	*	–	–	–
*	*	*	*	*	–	–	–
*	*	*	*	*	–	–	–
*	*	*	*	*	*	*	*
–	–	–	–	–	*	–	*
*	*	*	*	*	–	–	–
*	*	*	*	*	–	–	–
–	–	–	–	–	*	*	*

More of what you want

When it comes to choosing your Fiesta, there really is something for everyone. Our full range of high-quality seat and door trims let you create a beautifully-crafted, comfortable environment that reflects the fun and spirited driving experience of Fiesta.



FORD FIESTA Trim appendix



Not all trim combinations are available with all exterior colour options. Talk to your Ford Dealer for the latest information. Colours and trims reproduced in this brochure may vary from the actual colours due to the limitations of the printing processes used.

Style

Seat trim and colour

Match Point in Charcoal Black

Seat bolster trim and colour

View in Charcoal Black with Metal Grey stitching and Machine Silver piping

Door trim and colour

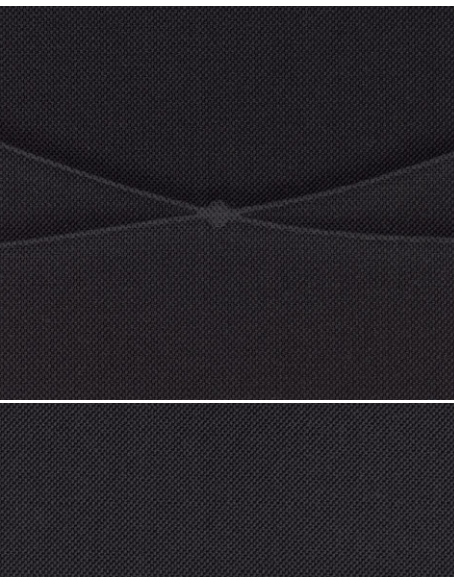
View in Charcoal Black

Centre stack bezel

Graphite Anodized

Upper instrument panel/Environment colour

Charcoal Black/Charcoal Black



Zetec

Seat trim and colour

Lithos in Charcoal Black

Seat bolster trim and colour

Domo in Charcoal Black with Metal Grey stitching

Door trim and colour

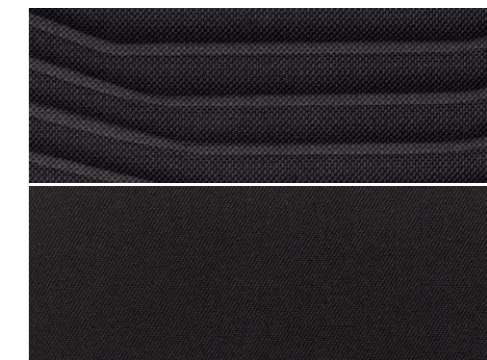
Ambassador in Charcoal Black

Centre stack bezel

Royal Black

Upper instrument panel/Environment colour

Charcoal Black/Charcoal Black



Zetec S

Seat trim and colour

Ultimate/Lux Soft in Charcoal Black

Seat bolster trim and colour

Monax/Lux Soft in Soft Charcoal/Charcoal Black with Generic Silver stitching

Door trim and colour

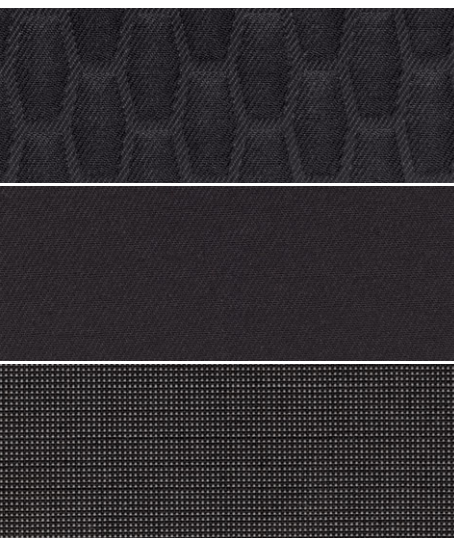
Ambassador in Charcoal Black

Centre stack bezel

Royal Black

Upper instrument panel/Environment colour

Charcoal Black/Charcoal Black



Zetec S

Seat trim and colour

Ultimate/Lux Soft in Charcoal Black

Seat bolster trim and colour

Monax/Lux Soft in Soft Charcoal/Charcoal Black/Red Hot with Generic Red stitching

Door trim and colour

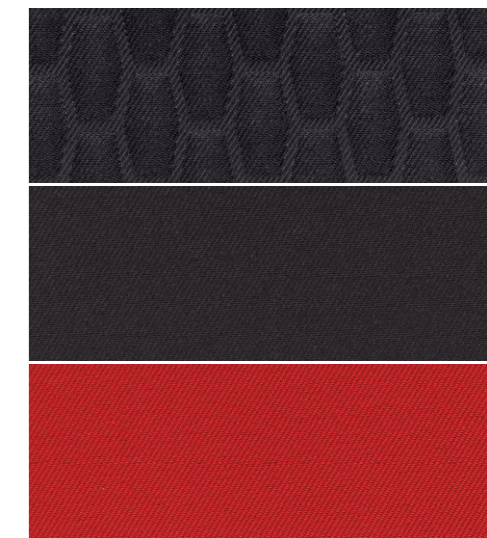
Ambassador in Charcoal Black

Centre stack bezel

Royal Black

Upper instrument panel/Environment colour

Charcoal Black/Charcoal Black



Zetec S

Seat trim and colour

Modena leather in Metallic Effect*

Seat bolster trim and colour

Modena leather in Charcoal Black with Metal Grey stitching*

Door trim and colour

Ambassador in Charcoal Black

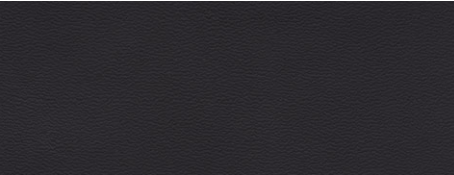
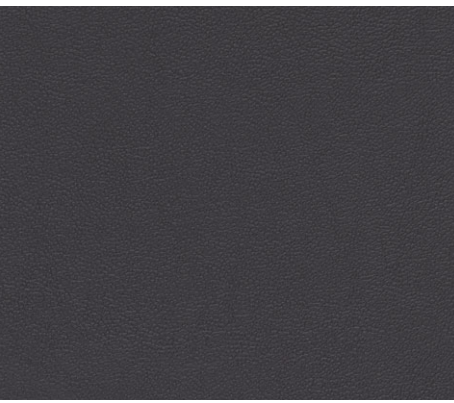
Centre stack bezel

Royal Black

Upper instrument panel/Environment colour

Charcoal Black/Charcoal Black

*Option at extra cost.



Titanium

Seat trim and colour

Lithos in Charcoal Black

Seat bolster trim and colour

Domo in Charcoal Black with Metal Grey stitching

Door trim and colour

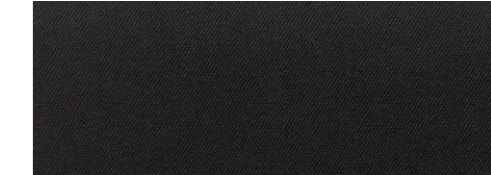
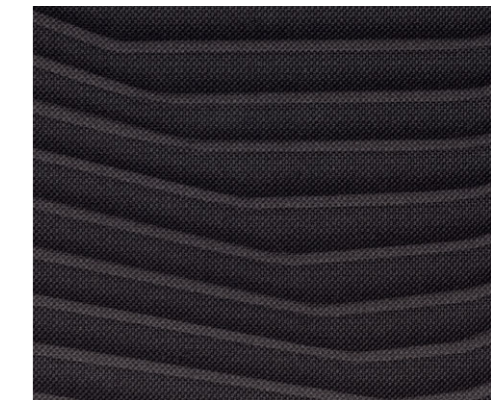
Ambassador in Charcoal Black

Centre stack bezel

Royal Black

Upper instrument panel/Environment colour

Charcoal Black/Charcoal Black



Titanium

Seat trim and colour

Modena leather in Metallic Effect*

Seat bolster trim and colour

Modena leather in Charcoal Black with Metal Grey stitching

Door trim and colour

Ambassador in Charcoal Black

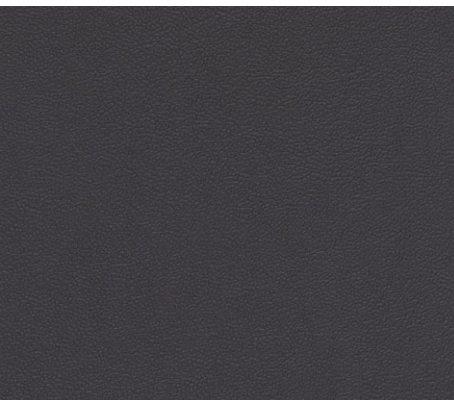
Centre stack bezel

Royal Black

Upper instrument panel/Environment colour

Charcoal Black/Charcoal Black

*Option at extra cost.



Titanium X

Seat trim and colour

Smitty Tech in Silver

Seat bolster trim and colour

Modena leather in Charcoal Black with Metal Grey stitching

Door trim and colour

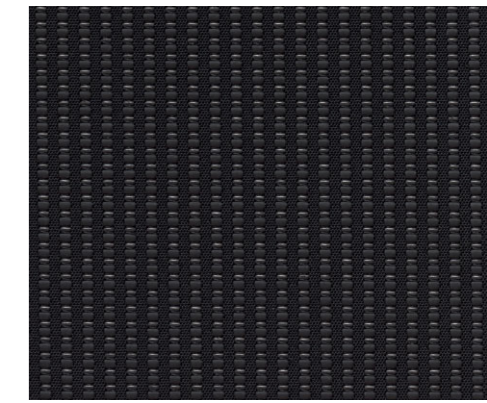
Ambassador in Charcoal Black

Centre stack bezel

Royal Black

Upper instrument panel/Environment colour

Charcoal Black/Charcoal Black



Titanium X

Seat trim and colour

Modena leather in Metallic Effect*

Seat bolster trim and colour

Modena leather in Charcoal Black with Metal Grey stitching

Door trim and colour

Ambassador in Charcoal Black

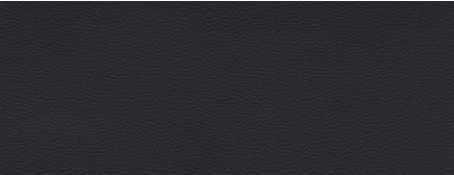
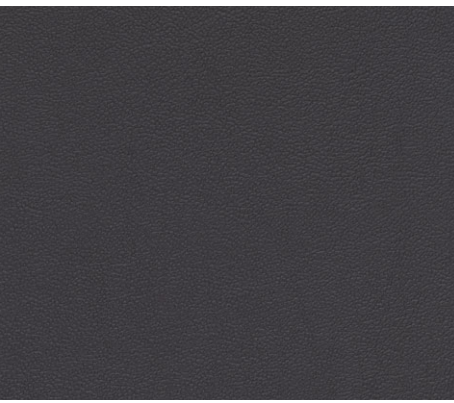
Centre stack bezel

Royal Black

Upper instrument panel/Environment colour

Charcoal Black/Charcoal Black

*Option at extra cost.



ST-1

Seat trim and colour

Airfield in Silverstone Grey

Seat bolster trim and colour

Lux Soft in Charcoal Black with Generic Silver stitching

Door trim and colour

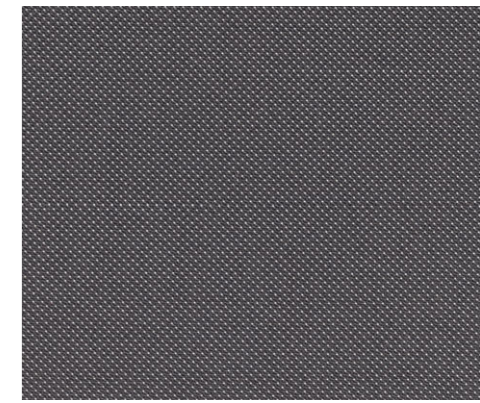
Ambassador in Charcoal Black

Centre stack bezel

Satin Black

Upper instrument panel/Environment colour

Charcoal Black/Charcoal Black



ST-2/ST-3

Seat trim and colour

Protection in Molten Orange

Seat bolster trim and colour

Torino leather in Charcoal Black/Lux soft Orange with Molten Orange stitching

Door trim and colour

Ambassador in Charcoal Black

Centre stack bezel

Satin Black

Upper instrument panel/Environment colour

Charcoal Black/Charcoal Black

Image shown is ST-2



ST-2/ST-3

Seat trim and colour

Protection in Smoke Storm

Seat bolster trim and colour

Torino leather in Charcoal Black/Lux soft in Smoke Storm with Generic Silver stitching

Door trim and colour

Ambassador in Charcoal Black

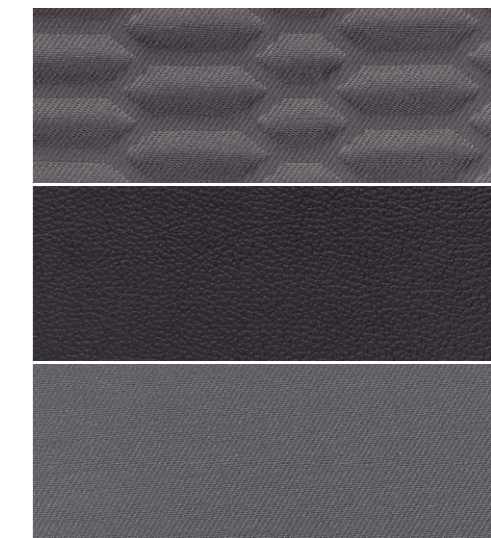
Centre stack bezel

Satin Black

Upper instrument panel/Environment colour

Charcoal Black/Charcoal Black

Image shown is ST-3



Bodystyle: _____ Series: _____

Engine: _____

Transmission: _____

Colour: _____

Trim: _____

Wheels: _____

Audio: _____

Options: _____

Option Packs: _____

Accessories: _____

Finance: _____

Choose

Use the form opposite to specify your new car right down to the wheels, audio, options and accessories, then take it to your Ford Dealer.

You can also specify your new car online using the Ford Configurator. It lets you instantly see what your car will look like – inside and out – from multiple angles. And a tally of your choices and their prices helps you keep to your budget. Visit www.ford.co.uk/ConfigureyourCar

Finance

When it comes to financing your car, our size and expertise means we're well placed to provide you with a wide range of finance products.

Ford Credit* provides a range of finance products for your car whether you are a private or business user.

Ford Lease^ specialises in contract hire and leasing and provides an alternative range of finance plans which can be tailored to suit your business. Business users only.

For more information about our finance products visit ford.co.uk

Drive

When you drive away in your new car, we're with you all the way. Ford has the largest authorised service network in the UK to help you keep your car in the best condition.

And should your new Ford ever require accident repair, a Ford Accident Repair Centre is the best place to get your car back to its pre-accident condition and on the road as quickly as possible.

Contact

Ford Credit Customer Services 0845 712 5490

Ford Lease Customer Services 0844 600 1405

To configure your Ford online visit www.ford.co.uk/ConfigureyourCar

To look at finance for your Ford visit www.fordcredit.co.uk/BuyingAndProtectingYourFord

Business users visit www.ford.co.uk/FordFleet



Ford Warranty and Servicing Plans

3-year/60,000 miles* Ford Protect Classic Plan Warranty

1-year/unlimited miles* Ford Assistance Roadside Cover (Europe)

2-year/2 services or 3 years/3 services* Ford Protect Premium Plan, including scheduled servicing and extended Ford Assistance

1-year/unlimited miles* Paint Warranty

12-year/unlimited miles* Perforation Warranty

● = Standard, ○ = Optional, at extra cost.

*From the date of first registration. Subject to terms and conditions

Illustrations, descriptions and specifications. This catalogue was correct at the time of going to print. However, Ford policy is one of continuous product development. The right is reserved to change specifications, colours and prices of the models and items illustrated and described in this publication at any time. For the latest details always consult your Ford Dealer. **Optional equipment.** Throughout this publication, wherever a feature is described as being an 'Option' or 'Option Fitment/Pack' etc, you should assume that it will be at extra cost to the base vehicle, unless specifically stated to the contrary. All models and colour combinations are subject to availability. **Note.** Some images portrayed are of a pre-production model and/or are computer generated, therefore, the design/features on the final version of the vehicle may differ in various respects. In addition, some of the features shown on the vehicles may be optional. **Note.** This brochure contains both original Ford accessories as well as a range of products from our suppliers. **+**The identified accessories are carefully selected third party supplier branded accessories which do not come with a Ford warranty but are covered by the third party supplier's own warranty, the details of which can be obtained from your Ford Dealer. **Note.** The Bluetooth® word mark and logos are owned by the Bluetooth SIG, Inc. and any use of such marks by Ford Motor Company is under licence. The iPod word mark and logos are the property of Apple Inc. Other trademarks and trade names are those of their respective owners. **Note.** Some driver assistance features and safety features described in this brochure are designed to function using sensors, whose performance may be affected under certain weather or environmental conditions.

The Government fuel figures do not express or imply any guarantee of the fuel consumption of any particular vehicle. The vehicles themselves have not been tested and there are inevitably differences between individual vehicles of the same model. In addition, a vehicle may incorporate particular modifications. Furthermore, the driver's style and road and traffic conditions, as well as the extent to which the vehicle has been driven and the standard of maintenance, will affect its fuel consumption. **Insurance groups** are only as recommended by the Association of British Insurers. You should always consult your insurance adviser for confirmation.



Ford and BP – working together to reduce fuel consumption and emissions.



Ford One Call

In the unlikely event that your Ford Dealer can't help you or if you need to speak to us directly, call 0203 564 4444

Ford Rental – local service nationwide

Car and Van rental from our latest model range. Contact your local Ford Dealer for more information



EURO NCAP advanced
2012 Reward for Ford MyKey

EURO NCAP advanced
2012 Reward for Ford SYNC with Emergency Assistance



International Engine of the Year
Ford 1.0 litre EcoBoost



BY APPOINTMENT TO
HER MAJESTY THE QUEEN
MOTOR VEHICLE MANUFACTURERS
FORD MOTOR COMPANY LIMITED
SPENWOOD ESSEX



BY APPOINTMENT TO
HIS MAJESTY THE PRINCE OF WALES
MOTOR VEHICLE MANUFACTURERS
FORD MOTOR COMPANY LIMITED
SPENWOOD ESSEX

MY 2014.5 GBR en

Published by Ford Motor Company Limited,
Brentwood, Essex, England.
Registered in England No. 235446.

FA 1540/10
BJN 202813. FoE H38E.
PN 371502/0714/100m/GBR en

February 2014.

© Ford Motor Company Limited.



www.ford.co.uk



Go Further