

FordS-MAX

Feel the difference



discover⁺



0.965237 of a millimetre

That's the thickness of a clay shaving. And to our designers it can make all the difference, as they hone and refine their clay prototype until they find the perfect expression of energy in motion.

The result is what we call Ford kinetic Design and we're passionate about it.

Bold, beautiful lines that you can't help falling in love with.



Actual size.

When life gets busy, some people just slip into a routine – whilst others enjoy every minute. It's your attitude that makes all the difference. Sometimes you just need to seize the day.

style⁺



Right to the last mile of
the longest journey, you'll
know this is a driver's car.
Because every detail has
been designed around you.

feel⁺



Beneath this sleek,
sophisticated design lies
a spacious and flexible
interior. No need to
compromise. It's time
to make your presence felt.

presence⁺



There's a big world out there
and it's all yours. Explore new
places or rediscover old ones.
Take the family or take some
time out for yourself.

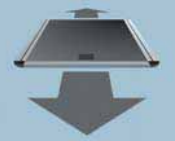
explore⁺





people+

A ski trip with friends, or a journey to the school gates. Whoever you bring, you will always have plenty of room.



Sliding load floor
The optional sliding load floor in lieu of third row seats allows for easier loading and unloading.

Space for... you decide

In the new Ford S-MAX, even the seats can enjoy their independence. Thanks to the Ford FoldFlatSystem (FFS) each second and third row seat individually folds down flat to provide numerous passenger and luggage possibilities. And when it comes to storage, there are many more hidden treasures.

1. Stowage pockets - front seat backs

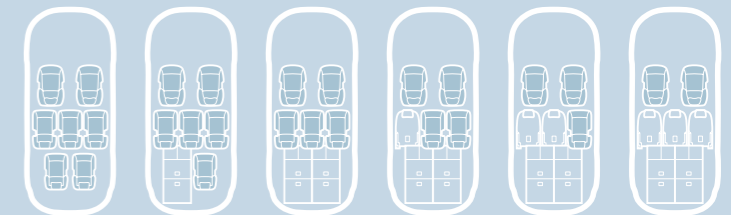
Items can be tucked away.

2. Underfloor stowage

Even under your feet you will find extra storage space.

3. Sliding load floor (optional in lieu of third row seats)

For loads up to 200 kg (120 kg on rear edge).



Seating configurations

32 ways to arrange your seats. Endless ways to store your luggage.

Tonneau cover

Retractable tonneau cover keeps your belongings safely out of sight. Standard on Zetec and Titanium; option on Edge.



Ford FoldFlatSystem (FFS)

Each individual rear seat can fold flat. Second row seats slide and tilt; third row seats tilt.



Ford S-MAX is a true driver's car. Whether you're nipping out to the shops or crossing continents on the family holiday of a lifetime, you can enjoy a dynamic driving experience.

confident⁺

Effortless performance
The new 2.2 Duratorq TDCi is our most powerful passenger car diesel engine, with 400 Nm of torque at just 1750-2750 rpm – and a massive 420 Nm on 'overboost' for rapid overtaking manoeuvres.



The power of technology

Ford S-MAX is designed to interact with you on many levels. The car provides confidence-inspiring feedback when you're on the move, so you are free to enjoy the driving even more. And, thanks to advanced features like Convers+ (standard on Titanium) and steering wheel-mounted fingertip controls, you can stay informed and entertained at all times without unnecessary distraction from the road ahead.

Fingertip controls

The right-hand steering wheel-mounted toggle switch lets you move easily through the menus that are displayed on the Convers+ display (standard on Titanium), providing simple, logical control of the system's many functions.



MultiMedia functionality

Convers+ allows simple control of DVD navigation*, audio and mobile phone (mobile phone not included) – plus many vehicle functions including Adaptive Cruise Control (ACC) with Forward Alert (FA)*, trip computer and message centre. Standard on Titanium.
* where specified



Interactive Vehicle Dynamic Control (IVDC) with Continuously Controlled Damping (CCD)

IVDC delivers notable improvements to handling, stability and braking performance. Each damper is adjusted five times per second to guarantee the best possible occupant comfort and road contact. You can also switch between suspension modes – sport, normal and comfort – as the mood takes you. (Option)

Bluetooth® with Voice Control

Bluetooth® lets you make hands-free calls, while Voice Control lets you control your Bluetooth® compatible systems with the sound of your voice.



Life is precious.
From Electronic Stability Programme (ESP) and Anti-lock Braking (ABS) to ISOFIX child seat attachments and driver's knee airbag, every part of the Intelligent Protection System (IPS) protects every part of you.

relax⁺



Hazard Warning Lights

Under heavy braking, the turn indicators automatically flash as a warning to following drivers.

Tyre Pressure Monitoring System

Tyre Pressure Monitoring System alerts you in case of deflation (image shown here is in the optional Ford Convers+ instrumentation). (Option)



Intelligent Protection System (IPS)

Beneath the steel safety cages lies a comprehensive airbag system, three-point seat belt pre-tensioners and collapsible steering column and pedals. All ready to spring into action in a fraction of a second.

1. Driver's and front passenger's airbag*

Instant protection in the event of a head-on collision. Also standard are front seat side airbags.

2. Curtain airbags

First and second row curtain airbags for side impact protection.

3. Driver's knee airbag

The driver's knee bolster airbag helps prevent injuries through contact with the steering column.

Stay in control

Ford S-MAX technology helps you retain control, even when the unexpected occurs.

4. Adaptive Cruise Control (ACC) with Forward Alert (FA)

Adaptive Cruise Control (ACC) lets you set the pace – and automatically decelerates to keep your chosen distance if the vehicle ahead of you is travelling slower than your set speed. (Option)

5. Forward Alert (FA)

Offers an audible and visual warning when there's a risk of colliding with the vehicle in front. At the same time, Emergency Brake Assist (EBA) prepares the brakes to facilitate full braking performance by increasing pressure within the brake system. Included as part of the optional Adaptive Cruise Control.

6. Hill Launch Assist

After releasing the brake pedal when stationary, the system keeps the wheels braked, leaving you enough time to move your foot from the brake pedal to the accelerator without the car rolling backwards. Included as part of the Adaptive Cruise Control (ACC) or Interactive Vehicle Dynamics Control (IVDC) options.



Euro NCAP

Euro NCAP provides drivers with an independent assessment of the safety performance of many of the most popular cars sold in Europe through its widely accepted 'star' rating system.

Electronic Stability Programme (ESP)

ESP is designed to detect and automatically compensate for loss of control under extreme conditions, using brakes and throttle to keep the vehicle firmly on track.

*Note: A child seat should never be placed in the front passenger seat when the Ford vehicle is equipped with an operational front passenger's airbag. The safest place for children is properly restrained on the second row seats.

Edge

A superb introduction to the range, with a generous standard equipment specification that includes 7-seats with Ford Fold Flat System (FFS) in second and third row, Advanced Bluetooth® Hands-Free and Voice Control System, air conditioning, remote central locking and power operation of the door mirrors and front windows.

Human Machine Interface (HMI) with Standard cluster display

The right-hand steering wheel-mounted toggle switch lets you move easily through the menus that are displayed on the cluster display, providing simple, logical control of the vehicle settings and trip computer.

Linear handbrake

The linear handbrake is engaged simply by pulling upwards. This design saves valuable space on the centre console compared to a conventional handbrake.

Front fog lights

Front fog lights for increased visibility in poor driving conditions.



Image shows Ford S-MAX Edge with Ink Blue optional metallic paintwork at extra cost.



Key features include:

- 16" steel wheels with 7x2-spoke wheelcovers
- Advanced Bluetooth® Hands-Free and Voice Control System
- Front fog lights
- CFC-free air conditioning
- Power-operated front windows
- Power-operated and heated door mirrors with side indicators
- Stereo CD/radio
- 7-seats with Ford Fold Flat System (FFS) in second and third row
- 'Quickclear' heated front windscreen
- Remote control central locking
- Thatcham (Category 1) approved alarm
- Electronic Stability Programme (ESP) with Traction Assist and Emergency Brake Assist (EBA)
- Anti-lock brakes (ABS) with Electronic Brake-force Distribution (EBD)
- ISOFIX attachments for child seat (outer seats on 2nd row only)

For full details, please see specifications section at the back of the brochure.

Dual-zone Electronic Automatic Temperature Control (DEATC)

Can be adjusted separately for the driver and front passenger, with up to 4°C variation from side to side. Standard on Zetec and Titanium; option on Edge (image shown below includes the optional Sony 6CD audio system at extra cost).

Power windows

Both the front and rear windows feature power operation, enhancing convenience for all occupants.

Leather steering wheel

The leather steering wheel and matching leather-trimmed gear knob have both a premium appearance and superb tactile quality.

Zetec

The S-MAX Zetec effortlessly merges sports styling with a flexible and spacious interior.

Model shown below is a Ford S-MAX Zetec with Tango optional metallic paintwork at extra cost.

Model shown opposite includes Sony CD audio system. (Option)



For full details, please see specifications section at the back of the brochure.

Additional to Edge

- 16" 5-spoke alloy wheels (with locking wheel nuts)
- Dual-zone Electronic Automatic Temperature Control (DEATC)
- Power-operated front and rear windows with global opening/close
- Sports-style front seats with driver's manual adjustable lumbar support
- Leather-trimmed steering wheel and gear knob
- Body colour door handles
- Tonneau cover

Titanium

Beneath the bold exterior of the S-MAX Titanium lies a wealth of innovative technology and sporty features, not to mention comfort. And if you still want to add something extra, there's the optional Titanium X-Pack to make an even bigger impression.

Ambient lighting

Bathes the gearshift and centre console in a subtle red glow.

Ford Convers+

This advanced instrumentation provides an exceptional interface between car and driver.

Climate seats

Allows variable control of the temperature for front seat occupants. (Option)

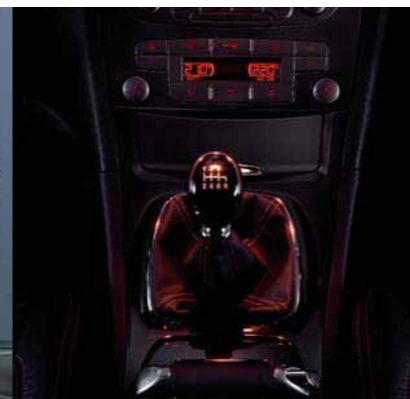


Image shows Ford S-MAX Titanium with optional metallic paintwork at extra cost.



Additional to Zetec

- 17" 5-spoke alloy wheels
- Sony CD audio system
- Ford Convers+ premium instrument cluster with colour display
- 'Park Assist' - front and rear parking sensors
- Cruise control
- Privacy glass
- Automatic headlights and Autowipers with rain sensors
- Sports-style front seats with driver's power-operated height adjustment and manual adjustable lumbar support
- Power-operated and heated door mirrors with puddle lights
- Instrument panel and door spears in metal finish
- Leather-wrapped steering wheel, gear knob and handbrake grip
- Body colour door handles with chrome inserts and bright-finish front door scuff plates
- Solar Reflect Windscreen

Titanium X Pack

Includes Bi-Xenon Front Lighting System with static cornering lamps, Alcantara/leather seat trim, panorama roof, and 18" Y-spoke alloy wheels. (Option)

For full details, please see specifications section at the back of the brochure.

Express Yourself

Taste is a matter of personal preference

Bodykit (see bottom left)

Available as an option on Titanium only.

Bi-Xenon headlights with static cornering lamps

Improves forward visibility around corners for increased safety. (Option)

Dual exhaust with straight finishers

Dual exhaust with straight finishers (standard with 2.5 Duratec petrol and 2.2 Duratorq TDCi engines only)

Leather gearshift gaiter

Leather gearshift gaiter with silver coloured stitching (available with optional Ford Individual Interior Pack when specified with Ebony and Silver coloured leather trim)

Image shows Ford S-MAX Titanium with optional Titanium X Pack (18" Y-spoke alloy wheels, Panorama Roof, Bi-Xenon headlights, and Alcantara / Leather seat trim), optional Bodykit, and Panther Black metallic paintwork all at extra cost.



Pack Individual - Ford Individual Interior Pack (see image above)

The Ford S-MAX Individual Interior Pack concept at extra cost includes:

- Unique leather seat trim with 'Individual' script. Available in four colour combinations (above image shows ebony and silver)
- Front seats - heated, with variable control
- Seat Pack - Driver and passenger's 8-way power seat adjustment with manual lumbar support, electrically operated/heated/folding door mirrors, memory function for driver's seat
- Pedal set with aluminium covers
- Unique floor mats and stainless steel scuff plates

For full details, please see specifications section at the back of the brochure.

Choose the Ford S-MAX that suits you – from the stylish and well-equipped Edge to the sporty Titanium 2.2 175PS TDCi with optional Titanium X Pack and optional Bodykit



choose⁺

Range data

Edge

- Advanced Bluetooth® Hands- Free and Voice Control System
- Power-operated and heated door mirrors
- Steering wheel toggle controls for audio and trip computer
- CFC-free air conditioning
- 7 seats with Ford Fold Flat System (FFS) in second row
- Power-operated front windows
- Remote control central locking

■ Bodystyle: 5-door

■ Engines:

● Petrol	
2.0 Duratec	145 PS
2.0 Duratec Flexifuel	145 PS
2.3 Duratec	161 PS
2.3 Duratec	161 PS
● Diesel	
1.8 Duratorq	125 PS
2.0 Duratorq	140 PS

Zetec

- 16" 5-spoke alloy wheels
- Sports-style front seats with driver's adjustable lumbar support
- Dual-zone Electronic Automatic Temperature Control (DEATC), CFC-free
- Power-operated front and rear windows
- Leather-trimmed steering wheel and gear knob

■ Bodystyle: 5-door

■ Engines:

● Petrol	
2.0 Duratec	145 PS
2.0 Duratec Flexifuel	145 PS
2.3 Duratec	161 PS
2.5 Duratec	220 PS
● Diesel	
1.8 Duratorq	125 PS
2.0 Duratorq	140 PS

Titanium

- 17" alloy wheels
- 'Park Assist' - front and rear parking sensors
- Sony CD audio system
- Ford Convers+
- Cruise control
- Solar Reflect windscreen
- Automatic headlights and Autowipers with rain sensors
- Privacy Glass

■ Bodystyle: 5-door

■ Engines:

● Petrol	
2.0 Duratec	145 PS
2.0 Duratec Flexifuel	145 PS
2.3 Duratec	161 PS
2.5 Duratec	220 PS
● Diesel	
1.8 Duratorq	125 PS
2.0 Duratorq	140 PS
2.2 Duratorq	175 PS

Titanium X Pack

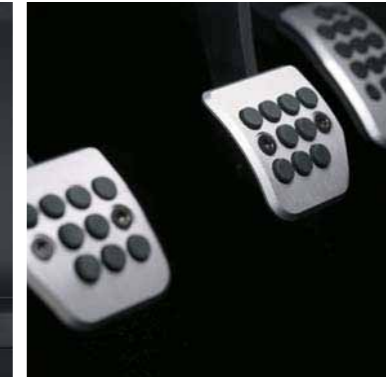
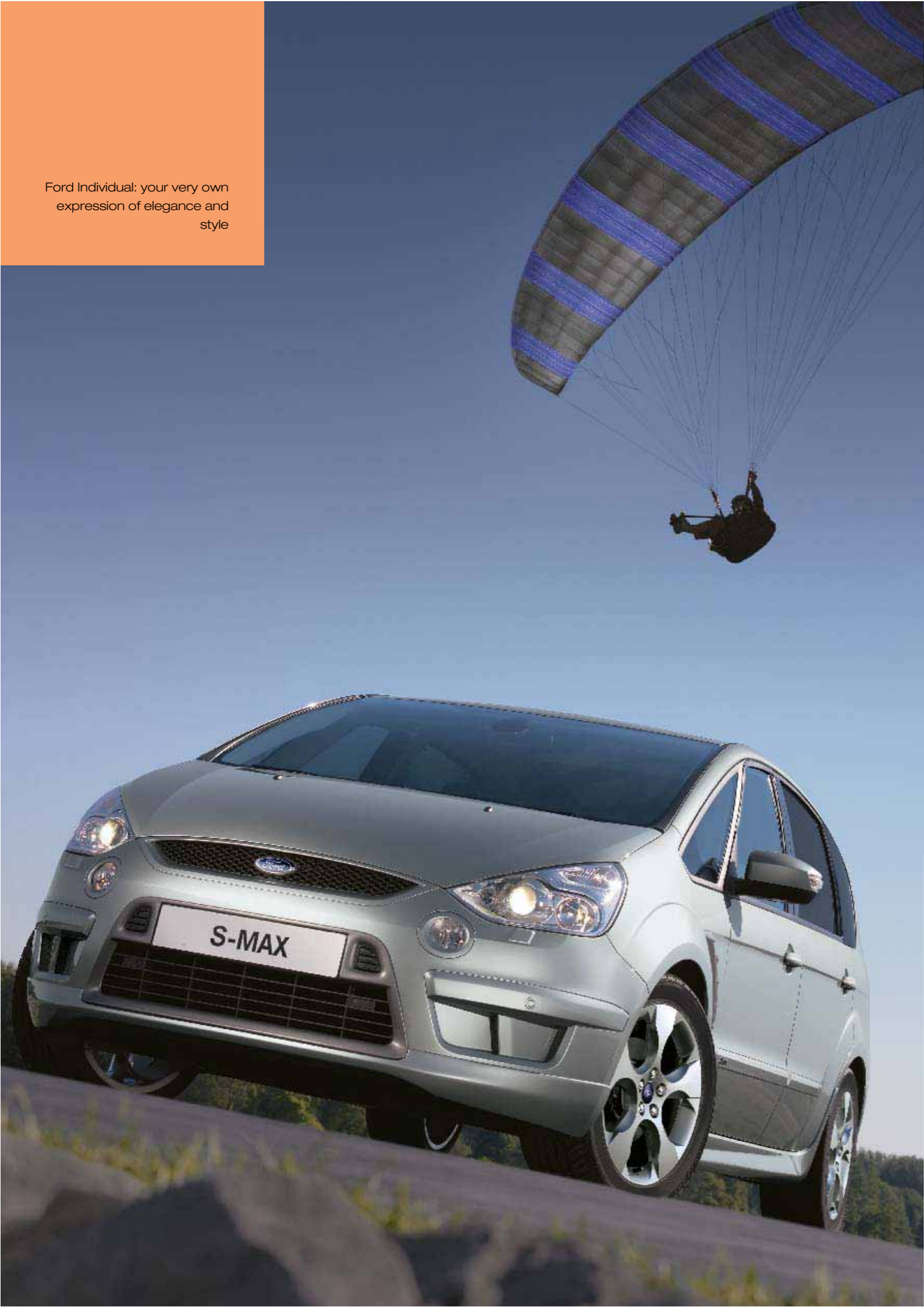
- 18" 5-spoke alloy wheels
- Bi-Xenons
- Alcantara/Leather seat trim
- Panorama roof

■ Bodystyle: 5-door

■ Engines:

● Petrol	
2.0 Duratec	145 PS
2.0 Duratec Flexifuel	145 PS
2.3 Duratec	161 PS
2.5 Duratec	220 PS
● Diesel	
1.8 Duratorq	125 PS
2.0 Duratorq	140 PS
2.2 Duratorq	175 PS

Ford Individual: your very own
expression of elegance and
style



Ford Individual

Choosing how you want to equip your new Ford S-MAX is all down to your personal preferences. However, regardless of which combination of Individual Packs you choose, you can rest assured that you will be enjoying one of the finest, most exclusive vehicles of its type that we have ever built.

Bodykit - Ford Individual Exterior Styling Pack. (Option)

- Rear lower bumper (body-colour) with integrated diffuser (silver or anthracite effect)*
- Unique side skirts (body-colour)
- Front lower valence panel (body-colour)
- Rear spoiler (body colour)

Ford Individual alloy wheels & front fender grilles. (Accessory)

- 17" Ford Individual 5-spoke alloy wheel, Mystique Silver-painted (accessory)
- 18" Ford Individual 5-spoke alloy wheel, Mystique Silver-painted (accessory)
- Front fender grilles (Anthracite or Silver (accessory))



Pack Individual - Ford Individual Interior Styling Pack. (Option)

(Available for Ford S-MAX Titanium only - not available with variable climate control front seats)

- Unique leather seat trim with 'Individual' script. Available in four colour combinations with leather door panels, armrest and gear lever gaiter
- Unique floor mats with colour-coded surround and reflective piping
- Unique stainless steel scuff plates with 'Individual' script
- Pedal set with aluminium covers including footrest cover
- 8-way power adjustment for the driver's and front passenger's seats including manual lumbar adjust
- Memory function for driver's seat and power foldable exterior mirrors
- Front seats - heated, with variable control

*The colour of the grille surround contrasts with the colour of the vehicle: Frozen White, Stardust Silver and Hypnotic Silver have an anthracite effect; all other available exterior colours have a silver effect.
Note Please see separate Ford S-MAX Individual brochure or ask your Ford Dealer for further information.



Your tunes, their tunes or just the sweet sound of a smooth drive. Every journey has a different beat.

silence⁺

Cordless headphones

Enjoy your own personal movie through the Multi-media DVD system. (Option)



Ford audio

Every note in crystal-clear form with Ford's premium audio systems.

Bluetooth® Hands-Free with Voice Control

Enables you to make hands-free calls, while the Voice Control technology lets you control your Bluetooth® compatible mobile phone (mobile phone not included), audio, DVD navigation* and climate control (DEATC*) systems with the sound of your voice.

*where specified



Sony 6CD audio system

With its 6-disc in-dash CD autochanger, MP3 compatibility, 40 programmable stations and premium speakers, the Sony 6CD audio system delivers hours of unbroken, crystal-clear sound. (Option)



CD-SD navigation system

Offers route guidance and CD/tuner in one. Features a 5" full-colour display with colour map and turn-by-turn instructions to your destination. You can even play MP3 files direct from your memory card for enhanced sound quality. Also includes an external AUX jack, SD memory card slot for data exchange or map data, remote audio controls and six speakers. (Option)



DVD navigation system

Features a 7" touch-screen colour display, MP3 capability, and eight premium speakers. (Option)



Note The Bluetooth® word mark and logos are owned by the Bluetooth SIG, Inc. and any use of such marks by Ford Motor Company Limited and its associated companies is under licence. Other trademarks and trade names are those of their respective owners.

Note It is an offence for drivers to use a hand-held mobile phone or similar device whilst driving.

Choose boldness,
choose beauty.
Choose to be noticed.

select⁺

Standard = Standard on your vehicle.

Option = Can be ordered only together with your new vehicle.

Accessory = Available from your Ford Dealer.



Wheels



16" 7x2-spoke wheel cover. Standard on Edge



16" 5-spoke alloy wheel. Standard on Zetec.



17" 5-spoke machined alloy wheel. Standard on Titanium and available as an option on Zetec. Also available as an accessory in both machined and silver painted finish.



17" 9-spoke alloy wheel. Available as an accessory.



17" 10-spoke alloy wheel. Option, available with run-flat tyres.



18" Y-spoke alloy wheel. Available as an option on Zetec and Titanium, accessory and as part of Sport Pack and Titanium X Pack.



20" MS Design Y-spoke alloy wheel. Accessory by MS Design.



17" Ford Individual 5-spoke alloy wheel, Mystique Silver-painted. Available as an accessory.



18" Ford Individual 5-spoke alloy wheel, Mystique Silver-painted. Available as an accessory.

Every part of the Ford S-MAX is designed to be seen. And with a choice of stunning sporty wheel designs, attracting second glances will become second nature. And for added safety in the event of a puncture, opt for the innovative run-flat tyres with Tyre Pressure Monitoring System; available with 17" 10-spoke alloy wheels.

Suited to your lifestyle

A family picnic or a snowboarding trip with friends. A mountain biking expedition or just a kick-about in the park. Whatever you're planning, the spacious and flexible interior of the Ford S-MAX is always prepared.



Activity Kit

Using a series of aluminium bars and special attachments that are fitted in the rear, this innovative kit allows items to be securely locked in place. (Option and accessory)

Eibach suspension-lowering kit*

The Eibach suspension-lowering kit enhances driving performance and handling as well as providing a more dynamic stance. Lowers the car by 30-40 mm. (Accessory)



Ford Boutique mountain bike*

For off-road and fun excursions, choose the Ford Boutique mountain bike, which features an 18-speed Shimano shift and a 26" frame. Order code F06-13-19. (Accessory)



Choose more

Leave nothing and no-one behind with Ford S-MAX's innovative stowage solutions.

Britax Römer child seat*



Various child seats available for all ages, also with ISOFIX. (Accessory)

Thule roof box*

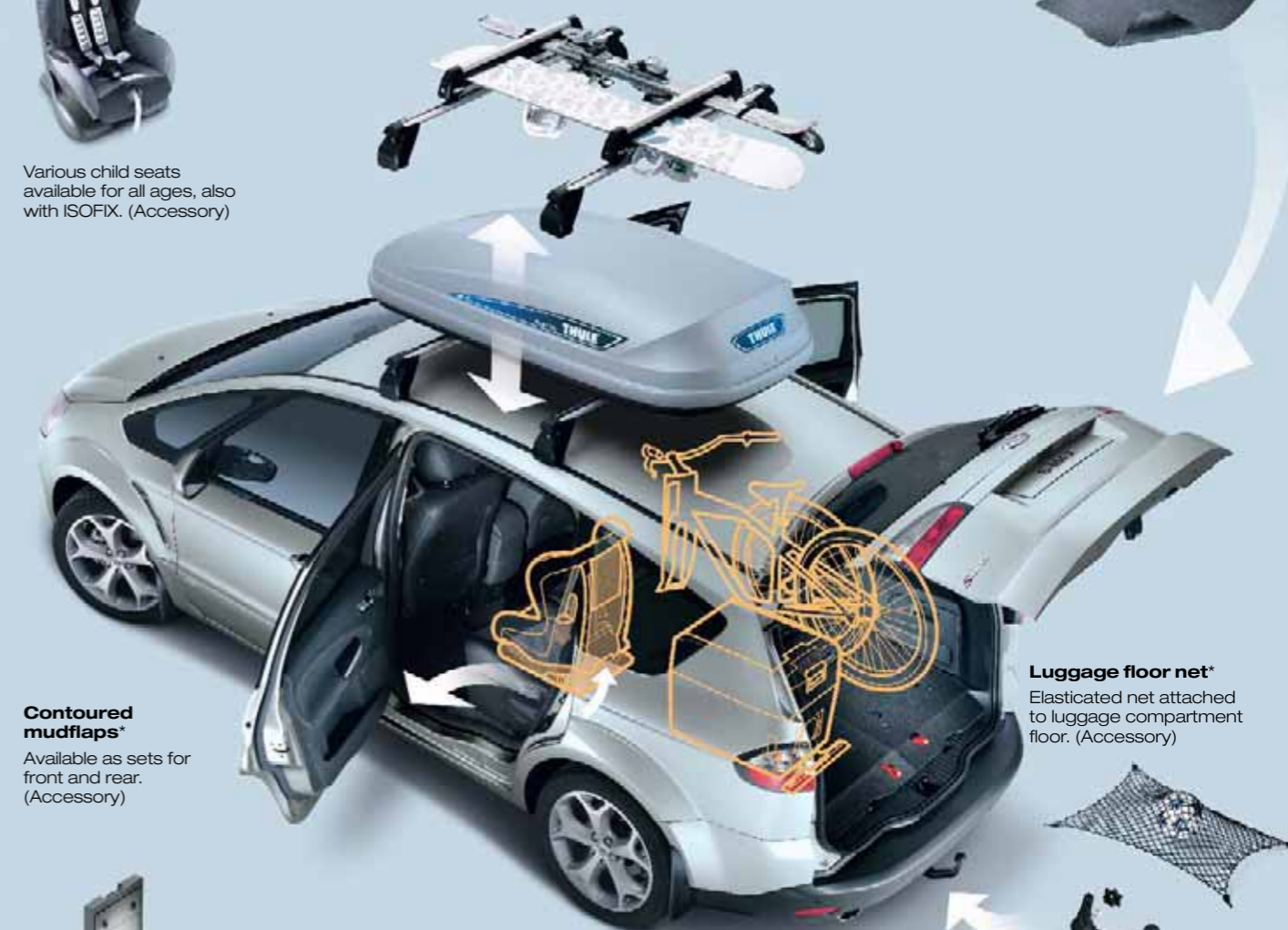
Different sized boxes protect your luggage from weather and theft. (Accessory)

Roof base carrier*

Base for all shown attachments.

Various luggage compartment mats*

Choose whatever you need. Robust rubber or elegant reversible carpet/rubber mat. (Accessory)



Contoured mudflaps*

Available as sets for front and rear. (Accessory)

Luggage floor net*

Elasticated net attached to luggage compartment floor. (Accessory)



Waeco coolbox*

High-performance 35-litre capacity box cools down to 30°C below the ambient temperature, to a minimum of 1°C. Integrated 230V AC connector. (Accessory)

Thule interior bike carrier*

Up to three bike carriers can be fixed to the Activity Kit. (Accessory)

Activity Kit**

With numerous flexible stowage solutions (see opposite).

Detachable tow bar**

For extra transport and stowage capability. Also available as fixed version. (Accessory)



Thule foldable roof box

Can be folded away for easy storage: the ideal space-saving solution for carrying luggage at a moment's notice. Shown in conjunction with roof carrier. (Accessory)



Dog guard system

Robust, full-height dog guard system keeps dogs or items of luggage safely in the luggage compartment. Can be fixed either behind the second-row seats or behind the front seats when the second-row seats have been folded down. Meets European ECE-17 safety requirement. (Accessory)



Load protection net**

This durable retention net keeps your items secure in the luggage compartment while you're on the move. Meets European ECE-17 safety requirement. (Option and accessory)



ClimAir® wind deflector

Reduces air turbulence and noise, allowing you a more enjoyable drive with the front windows down, even during light rain. (Accessory)

For more details on the innovative new Activity Kit and for further options for personalising your Ford S-MAX with a range of specially-designed accessories, please visit www.ford.co.uk

* Available as an accessory.
** Available as an option and accessory.

We are all beginning to understand the impact that mobility is having on climate change. While we can't change things overnight, we are working very hard to find solutions.

Our range of finance, insurance, service and assistance options is designed with just one thing in mind – making life easy for you.

Making a difference

On Ford Focus, Ford C-MAX, Ford Mondeo, Ford S-MAX and Ford Galaxy, our optional Flexifuel engine, fuelled by E85, is achieving emission reductions of around 30% to 80%** compared to conventional petrol engines. E85 is a mixture of 85% plant-derived ethanol and 15% petrol, but these models can run on any mixture of the two – even 100% petrol.

On Ford Focus and Ford Mondeo, new low emission diesel ECOnetic derivatives are now available. Ford Focus ECOnetic delivers more than 65 mpg, emitting just 115 g/km of CO₂ and Ford Mondeo ECOnetic delivers more than 53 mpg on 5-door, emitting 139 g/km of CO₂.

Protecting the future

Using our Product Sustainability Index, a design for sustainability management tool, we are addressing the environmental, social and economic impacts of our vehicles from the earliest stages of their development*.

We are working on a wide range of vehicle technologies from biofuels to hybrids and clean diesels, and in the long term to hydrogen fuel-cell technology with the potential for near zero CO₂ emissions.

Improving our manufacturing facilities

Elsewhere, we are working to minimise the impact of our facilities on the environment, for example by pioneering on-site generation of electricity from sun and wind.

Breathe easier

The allergy-tested interiors of Ford Ka, Ford Focus, Ford C-MAX, Ford Kuga, Ford Mondeo, Ford S-MAX and Ford Galaxy models were the first worldwide to receive the approval of the independent German TÜV organisation, and are endorsed by the British Allergy Foundation.

Recycling for good

In the interests of sustainability, many of our components contain recycled and renewable content. All Ford vehicles are at least 85% recyclable and 95% recoverable in accordance with ISO 22628. We offer free take-back for qualifying vehicles at the end of their lives. All our take-back points are fully licensed and must also meet additional Ford quality standards for the professional receipt, treatment and recovery of end-of-life vehicles.

This brochure has been produced on paper based on fibres from sustainable forestry, using a 100% chlorine-free (TCF) bleaching process.

*For more about this topic, see www.ford.com

**Dependent on feedstock used and production process. (Source: EUCAR CONCAWE study.) Ford supports the sustainable production of biofuels.

Ford Credit

Your local Ford Dealer can offer simple, plain language advice on the various ways of financing your purchase. They can help you complete an application and get a decision, usually within 15 minutes. For further details, visit www.ford.co.uk or contact your Ford Dealer.

Ford Options is the flexible plan if you want to change your car more often.

Ford Acquire is a straightforward plan for private customers and business users who want to own their cars outright.

Ford Business Partner provides dedicated advice for businesses that need a complete Contract Hire solution.

Ford Insure is a wide range of vehicle insurance products. When you purchase a Ford from a Ford Dealer, call us for a no-obligation quotation and we'll give you 7 days' free Driveaway cover*.

*Ford Insure may decline to quote in some circumstances, meaning that the 7 days' Driveaway cannot be given. Ford Insure is underwritten and administered by Norwich Union Insurance Limited. Registered in England No. 99122. Registered Office: 8 Surrey Street, Norwich NR1 3NG. Authorised and regulated by the Financial Services Authority. Quotations are valid for 60 days. Offer can be withdrawn at any time.

Services

Ford Protect

Your new Ford is protected by a 3-year/60,000-mile Ford Protect Classic Plan Warranty, and comes with Ford Assistance roadside cover throughout the UK and Europe for 1 year. You can also upgrade to a Ford Protect Premium Plan, giving you the option of scheduled servicing and extended Ford Assistance.

Ford Service

Like any vehicle, your new Ford needs servicing regularly to keep it in the best condition and to maintain its value. The Ford authorised repairer network is independently quality checked to ensure the highest standards of workmanship are maintained. Ford has the largest repairer network in the UK, and uses Ford-trained technicians, Ford-specific tools and the latest computerised diagnostic equipment specifically for your Ford.

Ford Accident Repair Centres

Should your Ford require accident repair, an approved Ford Accident Repair Centre is the best place to return your vehicle to its pre-accident condition. Repairers displaying the Ford Accident Repair Centre sign meet the rigorous customer service, technical and quality standards demanded by Ford. Ford trained technicians, the latest repair equipment and the use of original parts mean that the future safety and value of your vehicle are assured.

Contacts

Ford Customer Relationship Centre

In the unlikely event that your Ford Dealer can't help you or if you need to speak to us directly, call 0845 841 1111 at local rates.

Ford Rental – local service nationwide

Car and van rental from our latest model range. Contact your local Ford Dealer for more information.

Talkback – the company car drivers' club

This is your club for extended test drives, special events, and advice on tax and buying issues. Join free, even if you don't drive a Ford, on www.talkbackclub.com or call 0845 605 55 66.

Ford Mobility

Our MAGIC care centre provides free information on all motoring and mobility issues, including special offers for HRDLA and Motability recipients. Call free on 0800 240 241.

Exterior dimensions

	S-MAX
Exterior (mm)	
Overall length without towbar	4768
Overall length with towbar	4870
Overall width without mirrors	1884
Overall width with mirrors	2154
Overall height (unladen)	1658
Wheelbase	2850
Front overhang	916
Rear overhang	1002
Front tread	1578
Rear tread	1600

Interior dimensions

	S-MAX
Front (mm)	
Headroom	1017
Maximum effective leg room (rear most normal)	1088
Shoulder room	1531
2nd row (mm)	
Headroom	967
Minimum effective leg room (nominal)	991
Shoulder room	1535
3rd row (mm)	
Headroom	943
Minimum effective leg room	725
Shoulder room	1386
Luggage area (mm)	
Maximum cargo height (with 3rd row seats)	912
Maximum cargo height (without 3rd row seats)	1017
Maximum cargo width	1203
Maximum cargo width between wheel arches	1147
Maximum cargo length to back of 3rd row seats	496
Maximum cargo length to back of 2nd row seats	1113-1263
Maximum cargo length to back of front seats	2053
Stowable luggage (litres)*	
7-seat mode (laden to package tray)	285
5-seat mode (laden to roof) (normal/max.)	1051/1171
2-seat mode (laden to roof)	2000

*Measured using the VDA method. Dimensions may vary dependent on the model and equipment fitted.



2154 (mm)



4768 (mm)

Memory driver's seat and mirrors

The memory seat function includes four individual programmable settings for driver's seat and door mirrors – plus the extra convenience of automatic clipping of the passenger door mirror when reverse gear is engaged. (Option, included as part of Seat Pack and Pack Individual)



Scuff plates with S-MAX script

Polished stainless steel scuff plates look great and protect your vehicle. (Accessory)

6-speed CommandShift™ automatic transmission

This advanced automatic transmission includes a 'Sport mode' and can adapt to your individual driving style. CommandShift™ lets you manually select the gears for more involved driving.



Quickclear heated windscreen

This feature saves you the inconvenience of having to scrape ice from the windscreen – or having to wait until the interior ventilation can heat and clear the screen.

Engine data

	Engine technical features	Maximum power ^o	Maximum torque ^o
2.0 Duratec 1999 cc	4 cylinders in line; DOHC; 16 valves; variable intake system; alloy cylinder head and block; electronic multipoint fuel injection	107 kW (145 PS) at 6000 min ⁻¹ (rpm)	190 Nm at 4500 min ⁻¹ (rpm)
2.0 Duratec FFV 1999 cc	4 cylinders in line; DOHC; 16 valves; variable intake system; alloy cylinder head and block; electronic multipoint fuel injection	107 kW (145 PS) at 6000 min ⁻¹ (rpm)	190 Nm at 4500 min ⁻¹ (rpm)
2.3 Duratec 2261 cc	4 cylinders in line; DOHC; 16 valves; intake variable cam timing; alloy cylinder head and block; electronic multipoint fuel injection; dual-mass flywheel	118 kW (161 PS) at 6500 min ⁻¹ (rpm)	208 Nm at 4000 min ⁻¹ (rpm)
2.5 Duratec 2522 cc	5 cylinders in line; DOHC; 20 valves; alloy cylinder head; Variable Valve Timing (VVT); dual-mass flywheel; turbo charged; electronic multipoint fuel injection	162 kW (220 PS) at 5000 min ⁻¹ (rpm)	320 Nm at 2100 min ⁻¹ (rpm)
1.8 Duratorq TDCi Euro IV Diesel 1753 cc	4 cylinders in line; SOHC; 8 valves; cast iron head and block; direct injection with high pressure, common-rail, multipoint fuel injection system; electrically actuated variable geometry turbocharger with intercooler and transient torque overboost function; electronic-EGR; dual-mass flywheel	92 kW (125 PS) at 3700 min ⁻¹ (rpm)	320/340* Nm at 1800 min ⁻¹ (rpm)
2.0 Duratorq TDCi Euro IV Diesel 1997 cc	4 cylinders in line; DOHC; 16 valves; alloy cylinder head; direct injection with high-pressure, common-rail, multipoint fuel injection; variable geometry turbocharger with intercooler and transient torque overboost function; diesel particulate filter (automatic transmission only); electronic throttle; dual-mass flywheel	103 kW (140 PS) at 4000 min ⁻¹ (rpm)	320/340* Nm at 2000 min ⁻¹ (rpm)
2.0 Duratorq TDCi Euro IV Diesel 1997 cc	4 cylinders in line; DOHC; 16 valves; alloy cylinder head; direct injection with high-pressure, common-rail, multipoint fuel injection; variable geometry turbocharger with intercooler and transient torque overboost function; electronic throttle; dual-mass flywheel	103 kW (140 PS) at 4000 min ⁻¹ (rpm)	320/340* Nm at 2000 min ⁻¹ (rpm)
2.2 Duratorq TDCi Euro IV Diesel 2179 cc	4 cylinders in line; DOHC; 16 valves; alloy cylinder head; direct injection with high-pressure, common-rail, multipoint fuel injection; variable geometry turbocharger with intercooler and transient torque overboost function; electronic throttle; dual-mass flywheel	129kW (175 PS) at 3500 min ⁻¹ (rpm)	400 Nm at 1750 - 2750 min ⁻¹ (rpm)

^oTested in accordance with ISO 1585. **EGR** = Exhaust Gas Recirculation.* With transient overboost

Fuel, performance and emissions

	Stage	Derivative(s)	CO ₂ emissions (g/km) ^{oo}	Fuel consumption in L/100 km (mpg) ^{oo}			Performance ^o		
				Urban	Extra Urban	Combined	Max. speed (mph)	0-60 mph (secs)	30-60 mph* (secs)
Ford S-MAX									
2.0 Duratec (145PS)	Stage IV	Edge, Zetec, Titanium	194	11.0 (25.7)	6.4 (44.1)	8.1 (34.9)	122	10.4	14.9
2.0 Duratec FFV ¹⁾ (145PS)	Stage IV	Edge, Zetec, Titanium	194	11.0 (25.7)	6.4 (44.1)	8.1 (34.9)	122	10.4	14.9
2.3 Duratec, Durashift 6-speed automatic (145PS)	Stage IV	Edge, Zetec, Titanium	232	13.7 (20.6)	7.4 (38.2)	9.7 (29.1)	120	10.7	tba
2.5 Duratec, Durashift 6-speed manual	Stage IV	Zetec, Titanium	224	13.3 (21.2)	7.1 (39.8)	9.4 (30.1)	143	7.4	8.6
1.8 Duratorq TDCi (125 PS)	Stage IV	Edge, Zetec, Titanium	164	7.9 (35.8)	5.2 (54.3)	6.2 (45.6)	116	11.1	12.3
1.8 Duratorq TDCi (125 PS), Durashift 6-speed manual	Stage IV	Edge, Zetec, Titanium	164	7.9 (35.8)	5.2 (54.3)	6.2 (45.6)	116	10.9	10.3
2.0 Duratorq TDCi (140 PS), Durashift 6-speed automatic	Stage IV	Edge, Zetec, Titanium	193	9.9 (28.5)	5.8 (48.7)	7.3 (38.7)	120	11.1	tba
2.0 Duratorq TDCi (140 PS), Durashift 6-speed manual	Stage IV	Edge, Zetec, Titanium	164	8.1 (34.9)	5.4 (52.3)	6.4 (44.1)	122	9.7	9.2
2.2 Duratorq TDCi (175 PS), Durashift 6-speed manual	Stage IV	Titanium	176	9.0 (31.4)	5.2 (54.3)	6.6 (42.8)	132	9.0	tba

^oIn 4th gear. ^oFord test figures. ^{oo}All CO₂ emissions figures in g/km and fuel consumption figures in L/100 km are from officially approved tests in accordance with 80/1268/EEC as amended. The CO₂ emissions and fuel consumption test figures shown in the chart do not express or imply any guarantee of the fuel consumption of a car of the class in question (see back cover). All the figures are based on tests conducted on vehicles with Edge equipment level and with standard wheels and tyres; optional or accessory wheels and tyres may have an effect on the emissions and fuel consumption of a vehicle. **Urban** An engine started from cold in laboratory conditions operated at varying speeds, maximum 50 km/h, average 19 km/h over a theoretical distance of 4 km. **Extra Urban** Conducted immediately after the urban cycle, it consists of half steady speed driving and half varying speed driving, maximum 120 km/h over a distance of 7 km. **Combined** This is an average of the two parts of the test, weighted by the distances covered in each part. **Note** All vehicles are Durashift 5-speed manual unless stated. All petrol engines are equipped with a catalytic converter. ¹⁾The fuel economy data published above relate to use of the petrol 95 RON; use of alcohol fuel or a mixture of petrol and alcohol will lead to other fuel economy data.

Model availability, weights and loads

	Kerbweight (kg)*	Gross Vehicle Mass (kg)	Max. Towable Mass (kg)	Payload (kg) ⁹⁹
Ford S-MAX				
2.0 Duratec (145PS)	1605	2340	1100	735
2.0 Duratec FFV (145PS)	1605	2340	1100	735
2.3 Duratec, Durashift 6-speed automatic	1658	2405	1250	747
2.5 Duratec, Durashift 6-speed manual	1681	2420	1700	739
1.8 Duratorq TDCi (125 PS)	1736	2505	1450	769
1.8 Duratorq TDCi (125 PS), Durashift 6-speed manual	1744	2505	1450	761
2.0 Duratorq TDCi (140PS), Durashift 6-speed automatic	1771	2505	1750	734
2.0 Duratorq TDCi (140 PS), Durashift 6-speed manual	1743	2505	1750	762
2.2 Duratorq TDCi (175 PS), Durashift 6-speed manual	1802	2505	1800	703

*Represents the lightest kerbweight assuming the driver at 75 kg, full fluid levels and 90% fuel levels, subject to manufacturing tolerances and options fitted. ⁹⁹Payload = Gross Vehicle Mass less kerbweight. **Note** All vehicles are Durashift 5-speed manual unless stated. All petrol engines are equipped with a catalytic converter. **Towing limits** quoted represent the maximum towing ability of the vehicle at its Gross Vehicle Mass to restart on a 12 per cent gradient at sea level. The performance and economy of all models will be reduced when used for towing. **Nose weight limit** is a maximum 90 kg on all models. All figures quoted above are final homologation figures only.

Mechanical features

	Edge	Zetec	Titanium
Brakes & Vehicle Control			
Disc brakes – Front and rear (ventilated front, solid rear)	●	●	●
Anti-lock brakes (ABS) with Electronic Brake-force Distribution (EBD)	●	●	●
Electronic Stability Programme (ESP) with Traction Assist and Emergency Brake Assist (EBA)	●	●	●
Interactive Vehicle Dynamics Control (IVDC) with Continuous Controlled Damping (CCD) and Hill Launch Assist (not available with sport suspension or self-levelling rear suspension)	○	○	○
Adaptive Cruise Control (ACC) with Forward Alert (FA) and Hill Launch Assist		○	○
Electric Parking Brake (EPB)	○	○	○
Emergency (Hazard Warning) Brake Lights	●	●	●
Fuel tank			
70 litres (useable capacity)	●	●	●
Fuel cut-off – Inertia switch (petrol only)	●	●	●
Steering			
Hydraulic Power-Assisted Steering (HPAS) (except 2.0 Duratorq TDCi)	●	●	●
Electric Hydraulic Power-Assisted Steering (EHPAS) (2.0 Duratorq TDCi only)	●	●	●
Suspension and body			
Front – Independent with MacPherson struts, angled coil/spring damper units and lower A-arms, anti-roll bar	●	●	●
Rear – Independent Control Blade multi-link system, anti-roll bar	●	●	●
Rear – Self-levelling (not available with IVDC, sport suspension or fixed towbar)	○	○	○
Suspension – Sports (not available with IVDC or self-levelling rear suspension). Included as part of Sport Pack	○	○ / □	○ / □
Turning circle			
Kerb to kerb – 11.9 m	●	●	●

● = Standard, ○ = Optional, at extra cost, □ = Part of option pack, at extra cost

Insurance groups

	Edge	Zetec	Titanium
Ford S-MAX			
2.0 Duratec	11E	11E	11E
2.0 Duratec FFV	11E	11E	11E
2.3 Duratec, Durashift 6-speed automatic	11E	11E	11E
2.5 Duratec, Durashift 6-speed manual		14E	14E
1.8 Duratorq TDCi (125 PS)	10E	10E	10E
1.8 Duratorq TDCi (125 PS), Durashift 6-speed manual	10E	10E	10E
2.0 Duratorq TDCi (140PS), Durashift 6-speed automatic	11E	11E	11E
2.0 Duratorq TDCi (140 PS), Durashift 6-speed manual	11E	11E	11E
2.2 Duratorq TDCi (175 PS), Durashift 6-speed manual			12E

E = Exceeds security requirement for model concerned and group rating has been reduced. All vehicles are Durashift 5-speed manual unless stated.

Safety and security

	Edge	Zetec	Titanium
Safety			
Intelligent Protection System (IPS):			
Airbags – Driver's and front passenger's*	●	●	●
Airbags – Front side impact, driver's and front passenger's	●	●	●
Airbags – Front and 2nd row, side curtain airbags deployed from the headlining	●	●	●
Airbags – Driver's knee bolster airbag	●	●	●
Seat belts – 3-point seat belts with pre-tensioners and retractors (front seats only)	●	●	●
Seat belts – Front, height adjustable mounts	●	●	●
Collapsible steering column and pedals	●	●	●
Seats – ISOFIX attachments for child seat (outer seats on 2nd row only)	●	●	●
Passenger Airbag Deactivation Switch – Dealer fitted	○	○	○
Security			
Vehicle Identification Number (VIN) – Visible	●	●	●
Immobiliser – Passive Anti-Theft System (PATS)	●	●	●
Fuel flap – Central locking linked	●	●	●
Locks – High-security, anti-burst, shielded with strengthened mountings and childproof locks on rear doors	●	●	●
Locks – Remote control central double locking	●	●	●
Locks – 2nd remote key	●	●	●
Alarm – Perimeter with volume sensing (Thatcham Category 1 approved)	●	●	●

● = Standard, ○ = Optional, at extra cost.

***Note: A child seat should never be placed in the front passenger seat when the Ford vehicle is equipped with an operational front passenger's airbag. The safest place for children is properly restrained on the second row seats.**

Rear seat heat ducts

Side-mounted air vents provide extra ventilation for second-row seat passengers.

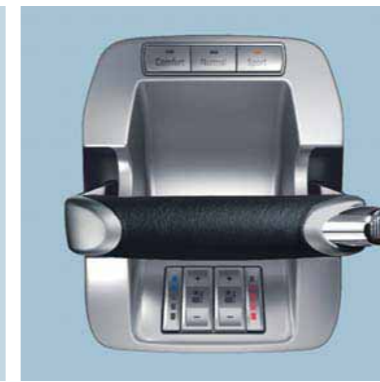


Tonneau cover

Retractable tonneau cover keeps your belongings safely out of sight. (Standard on Zetec and Titanium; option on Edge)

Parking brake

Elegantly designed new parking brake is easy to use while saving valuable space. Image is from Titanium and includes IVDC (at extra cost).



Electric Parking Brake (EPB)

The stylish EPB delivers the ultimate in comfort and convenience. To engage and disengage the handbrake takes a simple touch of a button. It will even disengage automatically if you choose. (Option and included as part of the Active Driver Pack on Zetec)

Wheel availability

	Edge	Zetec	Titanium
6½x16" steel with 7-spoke wheelcovers and 215/60 Rx16 tyres	●		
6½x16" 5-spoke alloy with 215/60 Rx16 tyres		●	
7x17" 5-spoke machined alloy with 225/50 Rx17 tyres		○	●
7x17" alloy (10-spoke) with 225/50 Rx17 run-flat tyres and Tyre Pressure Monitoring System	○	○	○
8x18" 5-spoke alloy with 235/45 Rx18 tyres. Included as part of Sport Pack on Titanium or Titanium X Pack		○	○ / □
Locking wheel nuts (only available with alloy wheels)		●	●
Tyre Pressure Monitoring System. Included on any vehicle specified with run-flat tyres	○ / □	○ / □	○ / □

Exterior features

	Edge	Zetec	Titanium
Styling			
Bodyside mouldings – Body colour	●	●	●
Bumper – Front, body colour, with integrated rub strips	●	●	●
Door handles – Body colour		●	
Door handles – Body colour, with chrome insert			●
Paint – Metallic	○	○	○
Panorama roof – Fixed glass with infra-red protection and manual sunblinds (Edge includes illuminated sunvisor vanity mirrors). Included as part of Titanium X Pack	○	○	○ / □
Radiator grilles – Black mesh with body colour surround	●	●	●
Body styling kit – Front and rear bumper skirts, rocker panels and rear spoiler			○
Functional			
Door mirrors – Electrically-operated and heated, body colour housings, with side turn indicators and, on Titanium, puddle lights	●	●	●
Door mirrors – Electrically-operated and heated, body colour housings, power folding, with side turn indicators and puddle lights. Included as part of Seat Pack and Pack Individual		○	○ / □
Exhaust – Dual (2.5 and 2.3 Duratec petrol models and 2.2 TDCi)		●	●
Exhaust - Tailpipes straight with finishers (2.5 Duratec petrol and 2.2 TDCi)		●	●
Heated rear window	●	●	●
Heated windscreen – 'Quickclear'	●	●	●
Electronic tailgate release	●	●	●
Glass – Blue tinted (windscreen and front side windows)			●
Glass – Privacy, dark tinted (rear side windows only)	○	○	●
'Park Assist' – Front and rear sensors	○	○	●
Towbar – Fixed, including 13-pin electrical kit (not available with self-levelling rear suspension)	○	○	○
Towbar – Detachable, including 13-pin electrical kit	○	○	○
Windscreen – Solar Reflect Windshield (infra-red protection)			●
Wipers – Front, variable intermittent with electric wash	●	●	●
Wipers – Autowipers, with rain sensor			●
Wipers – Tailgate, intermittent with electric wash and auto reverse wipe	●	●	●
Lights			
Halogen Adaptive Front Lighting System with static cornering lamps	○	○	○
Bi-Xenon Front Lighting System with static cornering lamps, automatic headlight levelling and washer jets. Included as part of Titanium X pack		○	○/□
Automatic headlights			●
Headlamp delay (switch-off headlights)	●	●	●
Front fog lights	●	●	●
Rear fog lights, reversing light, high-mounted rear brake light	●	●	●

● = Standard, ○ = Optional, at extra cost, □ = Part of option pack, at extra cost.

Audio and communication systems

	Edge	Zetec	Titanium
Audio			
Stereo CD/radio – Model 6000 CD, RDS EON, 'Keycode' anti-theft coding	●	●	
Sony CD audio system - Stereo radio/CD/MP3, RDS EON, PTY, MP3 capability, 40 station settings, 'Keycode' anti-theft coding, DPS, 8 premium speakers, new 'Island Design' centre stack	○	○	●
Sony 6CD audio system - Stereo radio/6 disc in-dash CD autochanger/MP3, RDS EON, PTY, MP3 capability, 40 station settings, 'Keycode' anti-theft coding, DPS, 8 premium speakers, new 'Island Design' centre stack		○	○
Steering wheel mounted toggle controls	●	●	●
CD-SD navigation system – Bosch Blaupunkt, MP3 capability, SD card, 5" colour display, TMC, 8 premium speakers	○	○	○
CD-SD navigation system – Bosch Blaupunkt, MP3 capability, SD card, 5" colour display, TMC, external 6-disc CD autochanger (located under driver's seat), 8 premium speakers	○	○	○
DVD navigation system – 7" touchscreen, colour display, destination input via voice, MP3 capability, TMC, 8 premium speakers. Includes DEATC on Edge.	○	○	○
DVD navigation system – 7" touchscreen, colour display, destination input via voice, MP3 capability, TMC, 8 premium speakers, external 6-disc CD autochanger (located under driver's seat). Includes DEATC on Edge.	○	○	○
MultiMedia DVD system – DVD player located under front passenger's seat, two LCD screens integrated in the front head restraints, with infra red remote control and two infra red headphones		○	○
Advanced Bluetooth® Hands-Free and Voice Control System (excludes cradle and tri-band antenna). Mobile phone not included.	●	●	●
Portable music player connection socket	●	●	●
USB Connectivity socket (not available until Autumn 2008)	○	○	○

● = Standard, ○ = Optional, at extra cost, □ = Part of option pack, at extra cost.

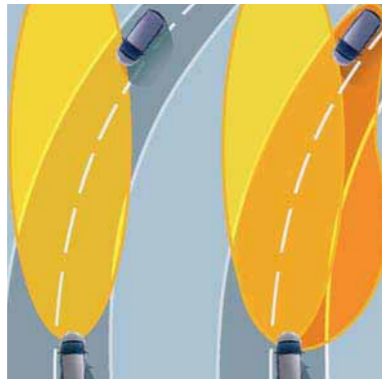
The Bluetooth® word mark and logos are owned by the Bluetooth SIG, Inc. and any use of such marks by Ford Motor Company is under licence. Other trademarks and trade names are those of their respective owners.

Interior features

	Edge	Zetec	Titanium
Comfort and convenience			
Accessory socket/cigar lighter – Front	●	●	●
Air recirculation switch	●	●	●
Air conditioning – CFC-free	●		
Air conditioning – CFC-free with Dual-zone Electronic Automatic Temperature Control (DEATC)	○	●	●
Centre console – Includes hinged armrest and stowage, two moulded cup holders, and 2nd row rear ashtray	●	●	●
Centre console – Overhead, including sunglasses stowage	●	●	●
Clock – Digital (within audio unit display)	●	●	●
Cup holders – Two integrated into centre console, and one located in 3rd row sidewall trim	●	●	●
Grab handles – Front and 2nd row folding with rear coat hooks	●	●	●
Mirror – Auto-dimming rear-view			●
Stowage – Located in rear quarter panels and rear quarter side trim panels	●	●	●
Stowage – Rear 2nd row underseat foot area	●	●	●
Sunblinds – Integrated pull-up on rear doors (includes electrically-operated rear windows on Edge)	○	○	○
Sunvisors – Driver's and passenger's with mirror and cover	●		
Sunvisors – Driver's and passenger's with illuminated mirror and cover (only available on Edge if specified with panorama roof)	□	●	●
Windows – Front, electrically-operated with one-touch lowering/closing on driver's side and global opening/closing	●		
Windows – Front and rear, electrically-operated with one-touch lowering/closing, and global opening/closing (only available on Edge if specified with integrated sunblinds)	□	●	●
Seat and seat belts			
Front seat – Driver's manual height adjustment	●	●	
Front seat – Driver's power height adjustment with manual adjustable lumbar support			●
Front seat – Driver's manual adjustable lumbar support		●	●
Front seat – Driver & Passenger's 8-way power adjustment (includes manual adjustable lumbar support on passenger seat). Included as part of Seat Pack and Pack Individual		□	□

Adaptive Front Lighting System (AFS)

The Adaptive Front Lighting System (AFS) adjusts the headlights to aim precisely where you are heading, making for safer and more enjoyable night driving. Static cornering lamps provide extra light for sharp bends and junctions. (Option)



Bi-Xenon Front Lighting System

Ford S-MAX's bi-xenon headlights shine brighter and project a wider angle of light than conventional headlights. More than twice as powerful as halogen headlights, but using only two thirds of the energy. Includes static cornering lamps. (Option on Zetec and Titanium; also included as part of the Titanium X Pack)

Adaptive Cruise Control (ACC) with Forward Alert (FA)

ACC with FA combines cruise control and distance control. Simply enter the desired speed and distance from the vehicle in front and ACC will automatically maintain the set distance if traffic conditions do not allow travel at the desired cruising speed. (Option)



Integrated sunblinds

Are integrated into the rear doors and can be quickly and easily drawn up to block out unwanted sunlight from the rear compartment. (Option)

Interior features

	Edge	Zetec	Titanium
Front seats – Anti-submarining, fully reclining with height-adjustable head restraints	●	●	
Front seats – Anti-submarining, fully reclining with fully-adjustable head restraints (only available on Zetec if specified with either partial or full leather trim)		□	●
Front seats – Sports-style		●	●
Front seats – Heated, with variable control (heated settings). Included as part of Pack Individual	○	○	○/□
Front seats – Variable climate control (cold and heated settings)			○
2nd row seats – Three individual fold-flat seats with height-adjustable head restraints	●	●	●
2nd row seats – Easy entry tip and slide system (not available if sliding load floor ordered ilo 3rd row seats)	●	●	●
3rd row seats – Two individual fold-flat seats with height-adjustable head restraints (not available if sliding load floor ordered ilo 3rd row seats)	●	●	●
Seats – Partial leather trimmed (includes velour front and rear door trim). Included as part of Sport Pack		○ / □	○ / □
Seats – Leather trimmed with contrast stitching on Ebony leather (includes velour front and rear door trim)		○	○
Seats - Alcantara leather trimmed. Included as part of Titanium X Pack			□
Seat back trays – Folding. Included as part of Traveller Pack	□	○/□	○/□
Stowage pockets – Front seat backs	●	●	●
Seat belts – Front, inertia reel, pre-tensioners and height-adjustable mounts. Rear, three inertia reel, lap and diagonal (2nd row), two inertia reel, lap and diagonal (3rd row, when 3rd row seats specified)	●	●	●
Carpet and trim			
Door handles – Satin Chrome finish	●	●	●
Gear lever knob – Leather-trimmed		●	●
Handbrake cover – Leather-covered			●
Scuff plates – Front, brushed stainless steel			●
Instruments and controls			
Headlight levelling control	●	●	●
Trip/fuel computer, incorporating exterior air temperature display and low temperature warning lights	●	●	●
Warning indicators for glow plugs on (diesel only), brake system, airbags, lights on, main beam, front and rear fog lights, handbrake, ESP, coolant temperature, driver's seat belt, ignition on, oil pressure, oil change, tyre pressure sensors (where specified), and 'lights on', key in ignition, door ajar and front seat belt reminder warning alarms	●	●	●
Illuminated recirculation heater controls – 4-speed fan, with pollen filter, direction control, two dedicated side window demists and rear compartment ducts	●	●	●
Ford Convers+ premium instrument cluster with 256 colour screen display			●
Cruise control (includes leather-trimmed steering wheel on Edge)	○	○	●
Steering column – Reach and rake adjustable	●	●	●
Steering wheel – Leather-trimmed, with contrast stitching on Ebony leather (only available on Edge if specified with Cruise control)	□	●	●
Alloy Pedal Set – Manual and automatic			○/□
Interior lighting			
Courtesy light – Front overhead with theatre-style dimming and delayed switch-off	●	●	●
Courtesy lights – Front overhead with two 2nd row map lights		●	●
Courtesy lights - Front footwell lights and ambient lighting			●
Courtesy lights – Illuminated entry system (courtesy lights and door mirror puddle lights, if fitted, illuminate when vehicle unlocked)	●	●	●
Luggage compartment			
Courtesy lights – Two	●	●	●
Sliding load floor (in lieu of 3rd row seats)	○	○	○
Tie-down hooks	●	●	●
Tonneau cover	○	●	●

● = Standard, ○ = Optional, at extra cost, □ = Included with another feature or part of an option pack, at extra cost.

Option packs

	Edge	Zetec	Titanium
Sport Pack – Partial leather-trimmed front seats, 18" Y-spoke alloy wheels with 235/45 Rx18 tyres, sports suspension			○
Titanium X Pack – Fixed panorama roof, Alcantara/leather trimmed seats in Ebony Platinum (includes velour front and rear door trim), Bi-xenon Front Lighting System, 18" Y-spoke alloy wheels with 235/45 Rx18 tyres			○
Active Driver Pack - Park Assist, Tyre Pressure Monitoring System, Electric Parking Brake		○	
Traveller Pack - folding front seat trays, load protection net, and front underseat stowage trays (stowage trays not available with CD/DVD navigation with external 6CD and DVD multimedia - rear seat entertainment)		○	○
Pack Individual - Leather 'Individual' seat & door trim, Front Seats - Variable heated front seats, Seat Pack (Driver and passenger's 8-way power seat adjustment with manual adjustable lumbar support, electrically operated/heated/folding door mirrors, memory function for driver's seat), front scuff plates, front & rear mats. and pedal set with aluminium covers			○
Seat Pack - Driver and passenger's 8-way power seat adjustment with manual adjustable lumbar support, electrically-operated/heated/folding door mirrors, memory function for driver's seat. Included as part of Pack Individual.		○	○/□

● = Standard, ○ = Optional, at extra cost, □ = part of option pack, at extra cost

Solar Reflect Windshield

The Solar Reflect Windshield blocks nearly four times the level of solar radiation as standard tinted glass, helping to keep the interior cooler and significantly improving the efficiency of the air conditioning. (Standard on Titanium)



Underseat stowage

Valuable items can be tucked away out of sight thanks to the innovative stowage beneath the driver's and front passenger's seats*.

*Driver's underseat stowage option not available with DVD MultiMedia or navigation systems with external 6-CD changer, and front passenger's underseat stowage option not available with DVD MultiMedia.

Underfloor stowage

Keep valuable items away from prying eyes.



Tyre Pressure Monitoring System

Allows you to monitor tyre pressure while on the move. System alerts you if a tyre pressure is too low or if the vehicle suffers a puncture. (Option; also included with run-flat tyres)



1



2



3



4



5



6



7



8



9



10



11



12

Solid Body Colours

- 1. Blazer Blue
- 2. Colorado Red
- 3. Frozen White

Metallic Body Colours*

- 4. Chill
- 5. Hypnotic Silver
- 6. Ink Blue
- 7. Kelp
- 8. Morello
- 9. Panther Black
- 10. Sea Grey
- 11. Stardust Silver
- 12. Tango

Express yourself

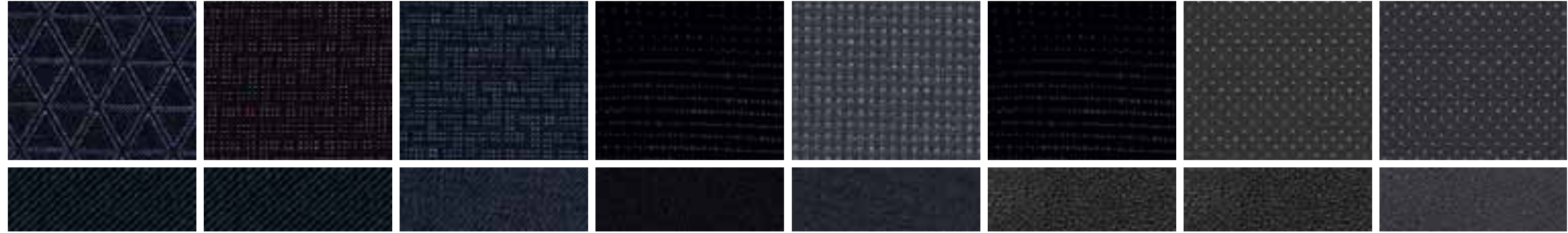
Taste is a matter of personal preference.

The Ford S-MAX is covered by the Ford Perforation Warranty for 12 years from the date of first registration. Subject to terms and conditions.

Note The car images used are to illustrate body colours only and may not reflect current specification. Colours and trims reproduced within this brochure may vary from the actual colours, due to the limitations of the printing processes used.

*Metallic body colours are options at extra cost.

**Partial leather, leather and Alcantara trims are options, at extra cost. Ford Individual full leather trim only available as part of the Pack Individual.



Ink Blue Tria in Ebony seat facing
Twill in Ebony seat sides

Integrate in Generic Orange seat facing
Twill in Ebony seat sides

Integrate in Infinity Blue seat facing
Twill in Infinity Blue seat sides

Waffle in Midnight Black seat facing
Lux in Ebony seat sides

Waffle in Infinity Blue seat facing
Lux in Infinity Blue seat sides

Waffle in Midnight Black seat facing
Napoli leather in Ebony seat sides

Napoli perforated leather in Charcoal seat facing*
Napoli leather in Ebony seat sides

Napoli perforated leather in Infinity Blue seat facing*
Napoli leather in Infinity Blue seat sides

Colour and trim

Model	Edge	Zetec	Titanium										
Seat facing trim and colour	Ink Blue Tria in Ebony	Integrate in Generic Orange	Waffle partial leather in Midnight Black*	Napoli perforated leather in Charcoal*	Integrate in Infinity Blue	Napoli perforated leather in Infinity Blue*	Waffle in Midnight Black	Waffle partial leather in Midnight Black*	Napoli perforated leather in Charcoal*	Alcantara perforated leather in Ebony Platinum*	Waffle in Infinity Blue	Napoli perforated leather in Infinity Blue*	Alcantara perforated leather in Infinity Blue*
Seat bolster trim and colour	Twill in Ebony	Twill in Ebony	Napoli in Ebony	Napoli in Ebony	Twill in infinity Blue	Napoli in infinity Blue	Lux in Ebony	Napoli in Ebony	Napoli in Ebony	Napoli in Ebony	Lux in Infinity Blue	Napoli in infinity Blue	Napoli in infinity Blue
Door trim insert and colour	Gecko in Infinity Blue	Gecko in Anthracite	Pieno in Ebony	Pieno in Ebony	Gecko in Infinity Blue	Pieno in Infinity Blue	Gecko in Anthracite	Pieno in Ebony	Pieno in Ebony	Pieno in Ebony	Gecko in Infinity Blue	Pieno in Infinity Blue	Pieno in Infinity Blue
IP colour: Upper / Lower	Ebony / Ebony	Ebony / Ebony	Ebony / Ebony	Ebony / Ebony	Infinity Blue / Pewter	Infinity Blue / Pewter	Ebony / Ebony	Ebony / Ebony	Ebony / Ebony	Ebony / Ebony	Infinity Blue / Pewter	Infinity Blue / Pewter	Infinity Blue / Pewter
Solid body colours													
Colorado Red	●	●	○	○	-	-	●	○	○	○	-	-	-
Blazer Blue	●	●	○	○	●	○	●	○	○	○	●	○	○
Frozen White	●	●	○	○	●	○	●	○	○	○	●	○	○
Metallic body colours*													
Morello	●	●	○	○	-	-	●	○	○	○	-	-	-
Ink Blue	●	●	○	○	●	○	●	○	○	○	●	○	○
Kelp	●	●	○	○	●	○	●	○	○	○	●	○	○
Hypnotic Silver	●	●	○	○	●	○	●	○	○	○	●	○	○
Panther Black	●	●	○	○	●	○	●	○	○	○	●	○	○
Sea Grey	●	●	○	○	●	○	●	○	○	○	●	○	○
Stardust Silver	●	●	○	○	●	○	●	○	○	○	●	○	○
Tango	●	●	○	○	-	-	●	○	○	○	-	-	-
Chill	●	●	○	○	●	○	●	○	○	○	●	○	○

● = Standard, ○ = Option, at extra cost, □ = Part of option pack, at extra cost. *Metallic paint, partial leather and full leather trim are optional, at extra cost. Titanium X Pack is only available with Alcantara / Leather in Ebony Platinum trim.

Alcantara perforated in Ebony Platinum seat facing*
Napoli leather in Ebony seat sides

Alcantara perforated in Infinity Blue seat facing*
Napoli leather in Infinity Blue seat sides

Ford S-MAX Individual full leather in Ebony/Blue with Ebony interior

Ford S-MAX Individual full leather in Ebony/Red with Ebony interior**

Ford S-MAX Individual full leather in Ebony/Silver with Ebony interior**

Ford S-MAX Individual full leather in Ebony/Orange with Ebony interior**

Ford S-MAX Individual full leather in Bordeaux/Infinity Blue with Infinity Blue/Pewter interior**

Ford S-MAX Individual full leather in Bordeaux/Grey with Infinity Blue/Pewter interior**



Ford S-MAX Individual
From the Ford Individual range, you can choose between six unique full leather seat trims (shown right) as part of the Ford Individual Interior Styling packs. Ask your Ford Dealer for further details or refer to the Ford S-MAX Individual brochure.



Illustrations, descriptions and specifications. This brochure was correct at the time of going to print. However, Ford policy is one of continuous product development. The right is reserved to change specifications, colours and prices of the models and items illustrated and described in this publication at any time. For the latest details always consult your Ford Dealer. **Optional equipment.** Throughout this publication, wherever a feature is described as being an 'Option' or 'Optional Fitment/Pack', etc., you should assume that it will be at extra cost to the base vehicle, unless specifically stated to the contrary. All models and colour combinations are subject to availability. **Note.** Some images portrayed are of a pre-production model and/or are computer generated, therefore, the design/features on the final version of the vehicle may differ in various respects. In addition, some of the features shown on the vehicles may be optional. **Note.** This brochure contains both original Ford accessories as well as a range of carefully selected products from our suppliers, which are featured under their own brands. All supplier branded products are subject to warranty terms defined by the relevant suppliers and do not lie within the responsibility of Ford. **Note.** The Bluetooth® word mark and logos are owned by the Bluetooth SIG, Inc. and any use of such marks by Ford Motor Company is under licence. Other trademarks and trade names are those of their respective owners.

The Government fuel figures do not express or imply any guarantee of the fuel consumption of any particular car. The cars themselves have not been tested and there are inevitably differences between individual cars of the same model. In addition, a car may incorporate particular modifications. Furthermore, the driver's style and road and traffic conditions, as well as the extent to which the car has been driven and the standard of maintenance, will affect its fuel consumption. **Insurance groups** are only as recommended by the Association of British Insurers. You should always consult your insurance adviser for confirmation.



BY APPOINTMENT TO
HER MAJESTY THE QUEEN
MOTOR VEHICLE MANUFACTURERS
FORD MOTOR COMPANY LIMITED
BRENTWOOD ESSEX

BY APPOINTMENT TO
HIS ROYAL HIGHNESS THE PRINCE OF WALES
MOTOR VEHICLE MANUFACTURERS
FORD MOTOR COMPANY LIMITED
BRENTWOOD ESSEX



Allergy-tested interior All materials used in the manufacture of the interior of this vehicle meet the strict requirements of the TÜV TOXPROOF Criteria Catalogue for Vehicle Interiors by the TÜV Produkt und Umwelt GmbH and are designed to minimise the risk of allergic reactions. With doors and windows closed, the interior materials selected – together with the integrated pollen filter – protect the passengers against most allergising particles from the outdoor air. At higher temperatures, the additional use of air conditioning is recommended.



Collect Nectar points at participating Ford Dealers now. So keep a look out for the latest Ford offers at www.ford.co.uk/nectar or call the Ford Information Service on 0845 7111 888. Calls are charged at national rate and may be recorded for training purposes.



Ford recommends BP.



Published by Ford Motor Company Limited,
Brentwood, Essex, England.
Registered in England No. 235446.
BJN 304871. FoE H32E.
PN 878503/0608/22.5m/GBR en
June 2008.
© Ford Motor Company Limited.

www.ford.co.uk

