

*Ford* S-MAX



**VISIONARY. INGENUOUS. REMARKABLE.  
EVERY CAR BEARS HIS SIGNATURE.**

*Henry Ford*



**S-MAX ST-Line**

*with Magnetic metallic body colour (option), 19" 5-spoke Rock Metallic painted alloy wheels (option) and ST-Line Lux Pack (option).*



**S-MAX Vignale**

*with Blue Panther metallic body colour (no cost option) and 19" 10-spoke polished aluminium-finish alloy wheels (standard).*

**CONTENTS**

Introduction .....	2	ST-Line .....	22
Interior comfort .....	4	Vignale .....	24
Panorama roof .....	8	Body colours .....	26
Audio and connectivity .....	10	Wheels .....	27
Features and technologies .....	12	Interior trims .....	28
Models overview .....	18	Options and packs .....	29
Zetec .....	20	Accessories .....	30
Titanium .....	21	Specifications .....	32



## *Empower your life*

New horizons. Familiar journeys. Surprising detours. Wherever life takes you, travel in comfort and arrive in style with Ford S-MAX. Stunning design blends with sophisticated technology and a dynamic driving experience to bring pleasure to every journey.

360°



*S-MAX ST-Line with 18" alloy wheels (standard), Moondust Silver metallic body colour (option) and ST-Line Lux Pack (option).*



## *No compromise*

You're not one for compromise. So when you need a car that can carry up to seven\* people that is spacious and comfortable, yet is still a great-looking vehicle, there's only one choice to make. The Ford S-MAX has room for everything, except compromise. So get out there and enjoy life to the fullest.

\*Seats up to seven people when an optional third row of seating is not folded.

S-MAX Vignale shown in Magnetic metallic body colour with premium perforated leather in Ebony seat trim.



## *Refinement redefined*

The Ford S-MAX Vignale radiates with refinement, combining the finest traditions of craftsmanship and a host of forward-thinking technologies. Exclusively sourced Ford Vignale leather offers a natural, glove-soft touch for an extra-sumptuous feel across the fascia, door inserts, and elegantly quilted seats.

*S-MAX Vignale with 19" 10-spoke alloy wheels (standard) and Blue Panther metallic body colour (no cost option).*

## *Panorama roof*

Enjoy the beauty of the outdoors from the comfort of your Ford S-MAX. A full-length glass panorama roof lets the sun shine in, while a solar reflect coating and powered sunblind provide shade and privacy when required. The feeling of comfort offered by the panorama roof is further extended by the addition of an infrared front windscreen and rear manual sunblinds (option).

*S-MAX ST-Line shown with panorama roof (option) and Salerno leather in Ebony with red stitching seat trim (part of optional ST-Line Lux Pack).*





## Meet your phone's new best friend

### Ford SYNC 3

Ford SYNC 3 integrates seamlessly with your compatible smartphone, letting you control everything from phone calls and text messaging to music and satellite navigation – all via the 8" touchscreen or through remarkably simple voice commands. Map updates help to keep you on track and on time, and are complimentary for a limited period following vehicle registration.

### SYNC 3 features

- Manage your phone, music, apps and navigation with simple voice commands
- Hear your text messages read aloud for you
- Control SYNC-compatible apps with AppLink, while Apple CarPlay and Android Auto let you navigate your smartphone through the SYNC 3 home screen, as if it were your handset
- Colour touchscreen supports multi-touch 'swipe' and 'pinch-to-zoom'

gestures, and lets you arrange application icons and background displays just as you would on your tablet or smartphone

Access additional features via your smartphone with the **FordPass App**.

- Select points of interest along your route. FordPass will send these locations to your SYNC 3 Navigation when you connect through AppLink
- Search for refuelling points by brand or fuel grade, and compare pricing
- Search available parking spaces, check costs, opening hours and ratings

**Please note:** Full SYNC 3 smartphone integration is only available with iPhone 5/Android 5.0 (Lollipop) or higher. Some SYNC 3 functions require a data connection, so mobile data charges will apply. To check whether Apple CarPlay and Android Auto are available in your market, please check official Apple CarPlay and Android Auto websites for the latest information.

## Effortless connectivity

Now you and your Ford can stay seamlessly connected wherever you are. That's because the FordPass Connect modem and the FordPass App, together, unlock a range of features designed to make every journey easier.



### FordPass Connect

#### FordPass Connect

FordPass Connect\* can help save you both time and hassle, as well as give you peace of mind. It is provided as a two year free trial (from date of first registration). After this, subscription fees are payable.

- Live Traffic\*\* provides near real time traffic information and offers dynamic routing based on traffic conditions (two year free trial)
- Local Hazard Information\*\* uses multiple local and national information sources to warn you of hazards in the road ahead
- On-board Wi-Fi\*\*\* allows you to connect up to 10 devices via Wi-Fi to the built-in 4G modem with FordPass Connect (3 months free trial)
- eCall† helps occupants place an emergency call to provide emergency services with the vehicle location in their respective language



#### FordPass App

FordPass Connect becomes even more powerful when paired with your smartphone via the FordPass App, allowing you to access a host of features.

- Remote lock and unlock your vehicle from anywhere via the app
- Use remote start to pre-condition your vehicle to its preset temperature (automatic transmission only)
- Check your vehicle's fuel level, oil health and tyre pressures straight from your phone
- Get service reminders and book your service direct from the app
- Find where you parked your car and be guided back with built-in maps
- Receive Vehicle Health Alerts directly to your phone
- Get access to exclusive customer offers

\*FordPass Connect is an optional extra. The on-board modem will be connected at the time of vehicle delivery. You may choose to opt in/out of certain data sharing. The technology will be made available in selected markets in 2019, with the remaining markets following through 2020. FordPass Connect feature usage is complimentary for the first 2 years, thereafter a subscription fee is payable.

\*\*Access is complimentary for the first 2 years following the registration of a new Ford featuring SYNC 3 with navigation; thereafter a licence fee is payable.

\*\*\*Wi-Fi hotspot (up to 4G LTE) includes a complimentary wireless data trial that begins when customers activate the trial with Vodafone, and expires at the end of 3 months or when 3GB of data is used, whichever comes first. Afterwards data bundles can be purchased from Vodafone, refer to their website for details of their data packages. To take advantage of the built-in Wi-Fi hotspot capability, a 2019 Ford vehicle must come with the appropriate hardware, and a data plan is required. Data coverage and service is not available everywhere and terms of your data plan, including applicable message and data rates, may apply.

†Ford eCall is an innovative feature that helps vehicle occupants initiate a call to the local Communications Centre, following a vehicle crash event involving an airbag deployment or fuel pump shut off. The feature operates in more than 40 European countries and regions.



## Always in control

### Technology making your life easier

- 01 Adaptive Lighting with Dynamic LED headlights** detects different road conditions and selects the appropriate beam pattern. Dynamic curve lights throw the beam inside the curve to let you see further and sooner. The headlights incorporate daytime running lights, with three LED strips that also function as turn indicators, flashing sequentially towards the direction of turn (part of optional Titanium and ST-Line Lux Packs, standard on Vignale).
- 02 Glare-free high beam** lets you drive on high beam without dazzling other road users. Sensors identify traffic ahead of your car and adjust the high beam pattern to help protect other road users from glare, while illuminating the remainder of the road for greater visibility (part of optional Titanium and ST-Line Lux Packs, standard on Vignale).
- 03 Adaptive Cruise Control with Stop & Go\*** maintains a comfortable distance from the vehicle ahead, and can even bring your car to a complete stop and move off again as the traffic allows (part of optional Driver Assistance Pack).

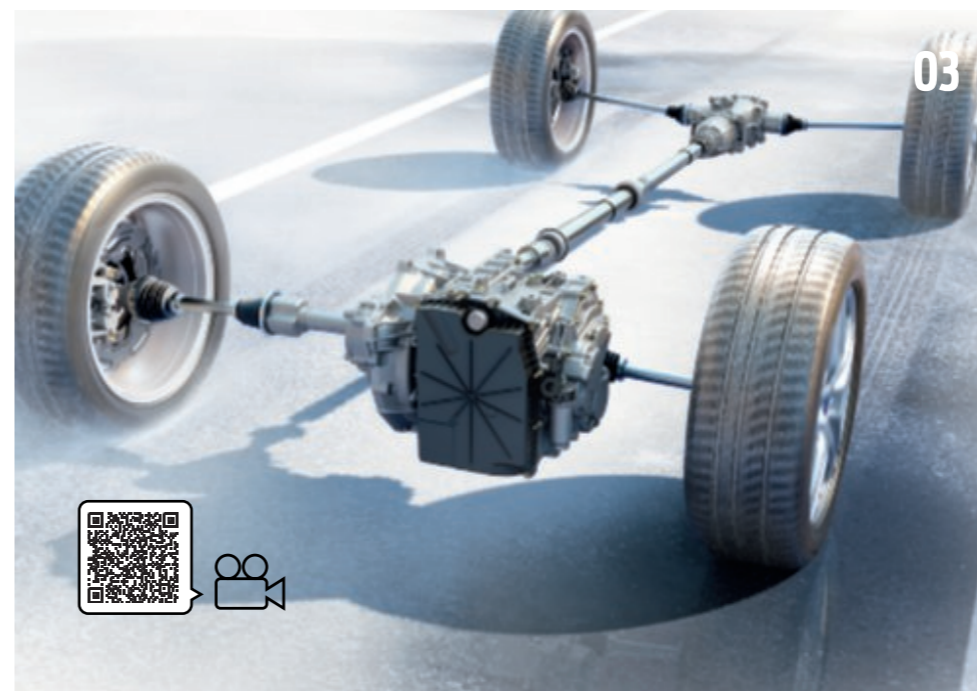
\*Stop & Go is only available with automatic transmissions.



01



02



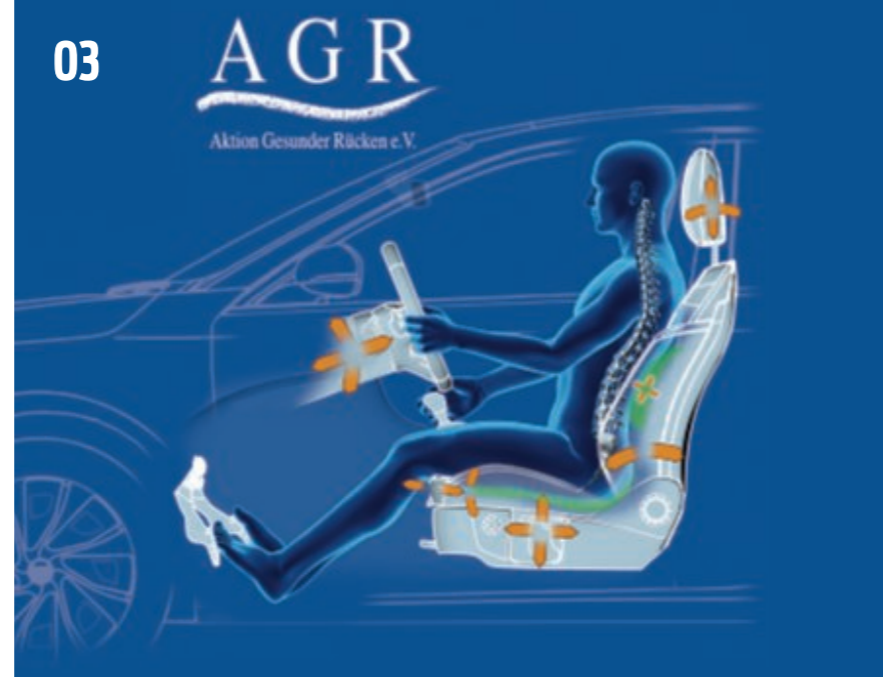
## Added reassurance

Ford S-MAX is available with a wealth of innovative optional technologies to help make every drive easier.

- 01 Active Park Assist<sup>®</sup>** can help you to parallel park or perpendicular park. Once activated, the enhanced system can help you to locate a suitable space as you drive past and will automatically guide you in, while you operate the pedals (following on-screen and audible signals). Park-Out Assist can help you manoeuvre out of a parallel parking space in a similar way (part of optional Driver Assistance Pack).
- 02 Front wide-view camera** provides an extensive view from the very front of your car to the left- and right-hand sides. Particularly useful at junctions and when driving forward out of parking spaces where your side view is impaired (part of optional Driver Assistance Pack).
- 03 Intelligent All-Wheel Drive** continually monitors where power is needed, and can automatically apply the required torque to each wheel for added confidence, whatever the road conditions (only available with 2.0L EcoBlue 190PS).

<sup>®</sup>Uses sensors.

S-MAX Titanium shown with Salerno Leather in Ebony trim (part of optional Titanium Lux Pack).



## Remarkable technologies

### Easier, safer, superior\*

- 01 Hands-free tailgate** makes opening or closing S-MAX's tailgate easy, even when your hands are full. With the keys in your pocket or bag, simply use a gentle kicking motion under the centre of the rear bumper and the tailgate will operate without you having to touch a thing (part of optional Titanium and ST-Line Lux Packs).
- 02 Pre-Collision Assist with pedestrian and cyclist detection<sup>o</sup>** uses radar and a camera to keep a watchful eye on the road ahead for cars, cyclists, and pedestrians. The system is designed to alert you to a potential collision and, if you fail to respond, can automatically apply the brakes to help avoid or reduce the effect of any impact (standard).
- 03 Ergonomic seats with AGR certification\*\*** help support your back. These ergonomically designed, 18-way manually-adjustable front seats with AGR accreditation are ideal for longer journeys (option).
- 04 Blind Spot Information System with Cross Traffic Alert and Variable Rear Range<sup>o1</sup>** If another vehicle – a car, van or lorry – enters your blind spot, the system is designed to alert you with a warning light built into the corresponding door mirror. The blind spot detection zone will vary up to a range of 18 metres, depending on the speed of the vehicle (part of optional Driver Assistance Pack).
- 05 Ford Clearview Front Wiper System** improves visibility by delivering the washer fluid directly into the path of each wiper blade as it moves across the windscreen (standard).
- 06 Traffic Sign Recognition<sup>o</sup>** is designed to automatically read standard format road-speed signs and display the posted speed limit in the instrument cluster (standard except Zetec).

<sup>o</sup>Uses sensors.  
<sup>o1</sup>Designed to operate at speeds above 10 km/h.  
 \*The AGR quality cachet (Aktion Gesunder Rücken = Campaign for Healthier Backs): Certified and recommended by Association Forum Healthy Back – Better Living and Federal Association of German Back Schools. More information: AGR e.V., Stader Str. 6, D – 27432 Bremervörde, Germany. Phone + 49 4761/92 63 580.  
 \*\*When compared to prior models not equipped with these technologies.

## Choose the right S-MAX for you

Available in a range of uniquely individual series, it's never been easier to choose a new Ford S-MAX. Whether you prefer the comfort of a Luxury vehicle, or the fun-loving dynamics of Sport, there is a new Ford S-MAX to suit you. To make your purchase choice even more rewarding, we've elevated the standard of features across all series. So now, whichever S-MAX route you decide to take, you can be sure of a higher level of standard features, as well as a host of add-on features available as part of an option pack.



**Zetec**

With its elegant design and impressive integrated technologies, a Ford S-MAX is the perfect choice to satisfy all your driving needs.



**Titanium**



**Vignale**

### Luxury

Ford S-MAX luxury models deliver superior levels of sophistication and comfort, with premium materials and additional technologies to make driving an even more pleasurable experience.



**ST-Line**

### Sport

With the distinctive eye-catching individuality of ST-Line Edition, the S-MAX sports model delivers sporty driving dynamics, along with agility and control.

## FORD S-MAX Models

### Zetec

#### Key exterior features

- 17" multi-spoke alloy wheels
- Halogen front fog lights
- Daytime running lights
- Halogen projector headlights
- Electrically-operated, power-foldable and heated door mirrors with body colour housings, side indicators and puddle lights
- Ford Clearview Front Wiper System
- Headlight courtesy delay

#### Key interior features

- Ford SYNC 3 DAB Radio/CD Audio System, 8" colour touchscreen, 8 speakers, voice control & Applink, Android Auto/Apple Carplay, 2 USB ports, eCall and FordPass Connect (embedded modem)\*
- Ford Power starter button
- Front and rear parking sensors
- Floor mats
- Cruise control
- Pre-collision Assist with pedestrian and cyclist detection
- Dual-zone Electronic Automatic Temperature Control
- 4.2" colour TFT cluster display
- Sport seats
- ISOFIX attachment for each second row seat
- Automatic wipers

#### Engines

##### Diesel

2.0L Ford EcoBlue 150 PS (110 kW)

#### Transmissions

6 speed manual  
8 speed automatic

\*FordPass Connect features and Live Traffic are complimentary for 2 years following registration of the vehicle, thereafter a subscription is payable. Wi-Fi hotspot includes complimentary wireless data trial that begins at time of activation and expires at the end of 3 months or when 3GB of data is used, whichever comes first. Afterwards a subscription to Vodafone is required.

S-MAX Zetec in Moondust Silver metallic body colour (option).



## FORD S-MAX Models

### Titanium

#### Exterior features additional to Zetec

- 17" 5x2-spoke alloy wheels
- Front LED fog lights
- LED daytime running lights
- Automatic headlights with auto high beam
- Rear privacy glass
- Chrome window surround
- Silver roof rails

#### Interior features additional to Zetec

- Ford DAB Navigation System
- Lane-Keeping Aid with Lane Departure Warning
- Traffic Sign Recognition
- Front seat back table trays
- 230 V Power outlet
- Ford KeyFree System with Ford Power starter button
- Interior ambient lighting
- 10.1" semi-digital colour cluster

#### Engines

##### Diesel:

2.0L Ford EcoBlue 150 PS (110 kW)

#### Transmissions:

6 speed manual  
8 speed automatic

S-MAX Titanium in Chrome Blue metallic body colour (option).



## FORD S-MAX Models

### ST-Line

#### Key exterior features additional to Titanium

- 18" 10-spoke alloy wheels
- Halogen headlights and LED rear lights with black surrounds
- Power-foldable door mirrors with driver's dimming, memory function and auto dip with reverse gear selected
- Bodystyling kit (includes unique front and rear bumpers, fog lights, upper and lower grille and rocker panel mouldings)
- Rear spoiler
- Red brake calipers
- Sports suspension
- Black roof rails

#### Key interior features additional to Titanium

- Perforated leather-trimmed steering wheel with red stitching
- Heated steering wheel
- Leather-trimmed gearshift gaiter with red stitching
- Salerno part-leather sport seats with red stitching
- 8-way power and variable heated front seats
- Memory driver's seat
- Aluminium sports pedals
- Front door scuff plates with ST-Line logo
- ST-Line floor mats with red stitching
- Dark themed interior

#### Engines

##### Diesel

2.0L Ford EcoBlue 190 PS (140 kW)

#### Transmissions

8 speed automatic

8 speed automatic All-Wheel Drive (AWD)



**ST-Line 18" alloy wheels with red brake calipers**  
(Standard)



**Perforated leather-trimmed steering wheel with red stitching**  
(Standard)



## FORD S-MAX Models

### Vignale

#### Key exterior features additional to ST-Line

- 19" 10-spoke alloy wheels
- Fog lights with high gloss black bezel and chrome surround
- Adaptive Lighting with Ford Dynamic LED headlights and glare-free high beam
- Unique Ford Vignale exterior styling with chrome detailing
- Metallic paint
- Enhanced power-foldable door mirrors with driver's dimming, memory function and auto dip with reverse gear selected
- Rear-view camera
- Bright-finish dual exhaust
- Power tailgate

#### Key interior features additional to ST-Line

- Ford SYNC 3 Premium Sony DAB Navigation System with 12 speakers
- Premium perforated leather trim
- Climate controlled front seats
- 10-way power multi-contour front seats with massage
- Leather-trimmed instrument panel
- Active Noise Control
- Luxury serged edging carpet floor mats, front and rear
- Front door bright-finish scuff plates with Vignale script
- Enhanced ambient lighting

#### Engines

##### Diesel

2.0L Ford EcoBlue 190 PS (140 kW)

#### Transmissions

8 speed automatic

8 speed automatic All-Wheel Drive (AWD)



Unique Ford Vignale exterior styling  
(Standard)



Leather-trimmed instrument panel  
(Standard)



## FORD S-MAX Body colours



**Blazer Blue**  
Solid body colour



**Chrome Blue**  
Metallic body colour\*



**Shadow Black†**  
Metallic body colour\*



**White Platinum†°**  
Exclusive body colour\*



**Frozen White**  
Solid body colour



**Magnetic**  
Metallic body colour\*



**Solar Silver††**  
Metallic body colour\*



**Lucid Red††**  
Exclusive body colour\*



**Agate Black††**  
Metallic body colour\*



**Star White††**  
Exclusive body colour\*



**Ruby Red†**  
Exclusive body colour\*



**Blue Panther**  
Metallic body colour\*



**Moondust Silver**  
Metallic body colour\*



**Stealth†°°**  
Metallic body colour\*

\*Metallic and exclusive body colours are options at extra cost.  
†°Available until end 2019 (Ruby Red and Shadow Black will be replaced by Lucid Red and Absolute Black).  
††Available from early 2020.  
°Available on Vignale only.  
°°Available on ST-Line only.

The Ford S-MAX is covered by the Ford Perforation Warranty for 12 years from the date of first registration. Subject to terms and conditions.

## FORD S-MAX Wheels and tyres



**17"**  
**10-spoke Sparkle Silver finish alloy wheel**  
Standard on Zetec  
(Fitted with 235/55 R17 tyres)



**17"**  
**5x2-spoke Sparkle Silver alloy wheel**  
Standard on Titanium  
(Fitted with 235/55 R17 tyres)



**18"**  
**5x2-spoke Machined Matte Black alloy wheel**  
Standard on ST-Line  
(Fitted with 235/50 ZR18 tyres)



**19"**  
**5x2-spoke Luster Nickel finish alloy wheel**  
Option on Titanium  
(Fitted with 245/45 R19 tyres)



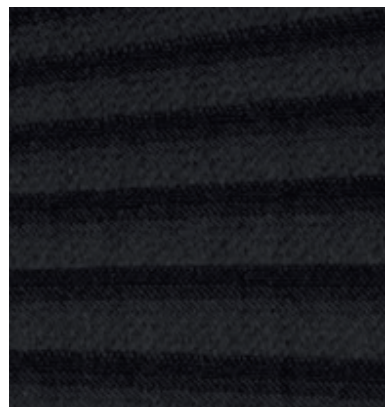
**19"**  
**5x2-spoke Rock Metallic finish alloy wheel**  
Option on ST-Line  
(Fitted with 245/45 R19 tyres)



**19"**  
**10-spoke polished aluminium-finish alloy wheel**  
Standard on Vignale  
(Fitted with 245/45 R19 tyres)

**Note** The car images used are to illustrate body colours only and may not reflect current specification or product availability in certain markets. Colours and trims reproduced within this brochure may vary from the actual colours, due to limitations of the printing processes used.

## FORD S-MAX Trims



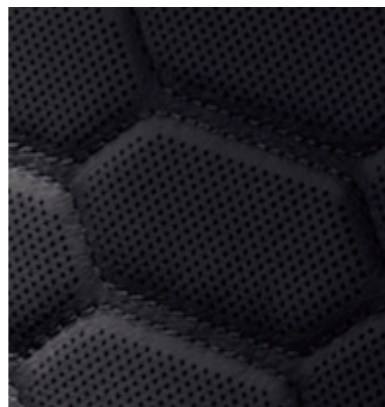
**Manhattan and Omni fabric in Ebony**  
Zetec (Standard)



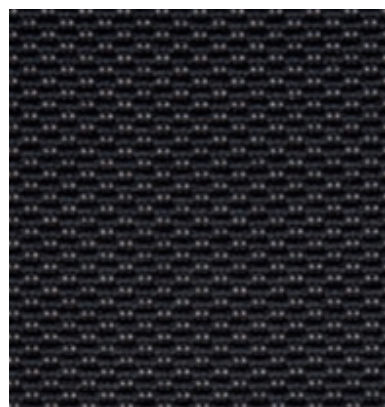
**Axis and Omni fabric in Ebony**  
Titanium (Standard)



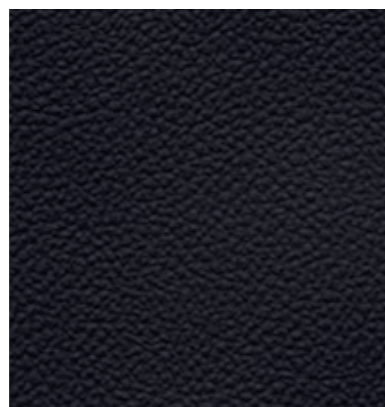
**Salerno partial leather with Miko Suede in Ebony with red stitching**  
ST-Line (Standard)



**Premium leather in Ebony**  
Vignale (Standard)



**Calder and Omni fabric in Ebony**  
Zetec/Titanium (optional) with 18-Way Ergonomic seats only



**Salerno leather in Ebony**  
Titanium (part of optional Titanium Lux Pack)



**Salerno full leather in Ebony with red stitching**  
ST-Line (part of optional ST-Line Lux Pack)

## FORD S-MAX Options and Packs

To make Ford S-MAX even more appealing, the most relevant features offered across the range now come as standard, and the special pack line-up has been refreshed. Some options can also be ordered individually, helping you to configure your perfect S-MAX. Please speak to your Ford Dealer for more information about the options available.

### Driver Assistance Pack

Adaptive Cruise Control  
Active Park Assist with parallel and perpendicular parking  
Park Out Assist  
Front-view camera  
Rear-view camera  
Blind Spot Information System (BLIS)  
Ford SYNC 3 Sony DAB Navigation system

### Vignale Driver Assistance Pack

Adaptive Cruise Control  
Active Park Assist with parallel and perpendicular parking  
Park Out Assist  
Front-view camera  
Blind Spot Information System (BLIS)

### Winter Pack (standard on ST-Line and Vignale)

Heated steering wheel  
Heated front seats

### Titanium Lux Pack

Adaptive LED headlights  
Leather seats  
Variable heated front seats  
8-way power front seats  
Power tailgate

### ST-Line Lux Pack

Adaptive LED headlights  
Leather seats with red stitching  
Power tailgate

### Zetec



#### Single Options

Rear privacy glass  
Detachable tow bar  
Tow bar pre-equipment  
Self-leveling suspension\*  
18-way Ergonomic seats  
Ford SYNC 3 DAB Navigation System

### Titanium



#### Single Options

19" Luster Nickel alloy wheels  
Panorama roof with rear sunblinds  
Rear air conditioning  
Detachable tow bar  
Tow bar pre-equipment  
Self-leveling suspension\*  
18-way Ergonomic seats  
Ford SYNC 3 Sony DAB Navigation System

### ST-Line



#### Single Options

19" 5x2-spoke "Rock Metallic" alloy wheels  
Panorama roof with rear sunblinds  
Rear air conditioning  
Detachable tow bar  
Tow bar pre-equipment  
Ford SYNC 3 Sony DAB Navigation System

### Vignale



#### Single Options

Panorama roof with rear sunblinds  
Rear air conditioning  
Detachable tow bar  
Tow bar pre-equipment  
Self-leveling suspension\*  
Metallic paint

Driver Assistance Pack

Vignale Driver Assistance Pack

Winter Pack

Titanium Lux Pack

ST-Line Lux Pack

\*not available with All-wheel drive (AWD)



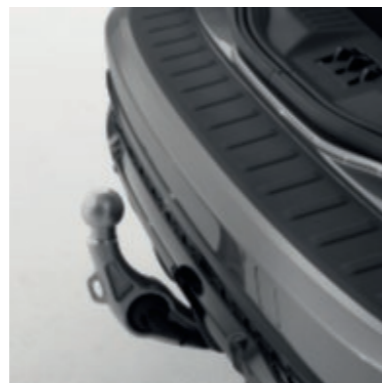
### Boot Liner

Durable tray-style liner, designed to keep the load compartment clean and tidy, ideal for transporting wet or dirty items (Accessory).



### Roof spoiler

Engineered specifically for the Ford S-MAX, the roof spoiler gives your model a sportier profile and enhanced aerodynamics (Option and Accessory).



### Tow bars

Retractable tow bar can be folded out of sight behind the rear bumper when not in use, retaining the model's sleek looks (Option and Accessory\*). Also available is a detachable tow bar (Option and Accessory\*) and a fixed tow bar (Accessory).

### Roof racks

Sturdy base carrier or cross bars allow you to transport a range of loads safely and easily. Lockable cross bars (Accessory) are only for use with with roof rails (Option).

### Thule®+ roof attachments

A range of roof attachments is available, including roof boxes, bike carriers and roof ski/snowboard carriers (Accessory).

### Uebler+ rear bike carrier

High-quality tow bar-mounted bike carrier with practical tilting mechanism (selected models), for easy access to the load compartment (Accessory).

### Load floor net

Elasticated net attaches to tie-down hooks in the load compartment. Helps to secure smaller items and belongings (Accessory).

### Load retention systems

Robust retention systems meeting European ISO27955 safety requirements keep items of luggage safely in the load compartment. A net can be ordered for fitment behind the second row of seats, while a guard is available for fitment behind either first or second row (Option and Accessory\*). Not available in conjunction with optional Tri-zone Electronic Automatic Temperature Control or panorama roof.

### Load compartment protection

A durable tray style boot liner with Ford S-MAX logo is available, ideal for transporting wet or dirty items (accessory only), as well as a reversible load compartment mat (that can be extended over the rear seats, together with fold-out bumper protection) and carpet with Ford S-MAX logo on one side and a durable rubber surface on the reverse side (Accessory).

### Rubber floor mats

The tray-style all-weather rubberised floor mats with the Ford S-MAX nameplate are tailor-made and help to protect against dirt and damp. The driver's mat is securely fixed directly onto the vehicle's floor to help prevent it from slipping (Accessory).

### Mud flaps

Contoured mud flaps help to protect the bodywork of your Ford S-MAX from stone chips and road spray. Available for front and rear (Accessory).



Items ordered as an option will be fitted in the factory. If ordered as an accessory, items will be fitted at the dealership. Fitment of accessories may have an impact on your vehicle's fuel consumption. \*Item covered by third party supplier's warranty, please see inside back cover for details.



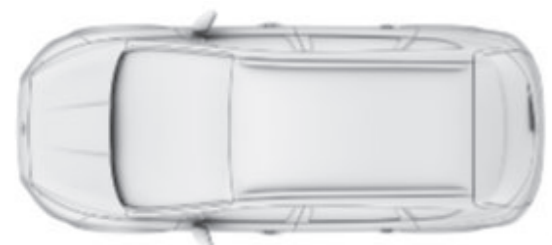
For more accessories please visit the Online Accessory Catalogue at [www.ford-accessories.co.uk](http://www.ford-accessories.co.uk)

For a range of Ford branded merchandise – from clothing to lifestyle products – visit [www.fordlifestylecollection.com](http://www.fordlifestylecollection.com)

## Dimensions

Exterior (mm)	
Overall length without tow bar	4796
Overall width with/without mirrors	2137/1916
Overall width with folded mirrors	1953
Overall height (unladen)	1655
Turning circle – kerb-to-kerb (m)	11.6
Minimum distance between wheel arches (in luggage load compartment)	1145
Luggage capacity (litres) <sup>†</sup>	
7-seat mode (laden to roof)	285
5-seat mode (laden to roof)	965
2-seat mode (laden to roof)	2020
Fuel tank capacity (litres)	
Petrol	70
Diesel	70

<sup>†</sup>Measured in accordance with ISO 3832. Dimensions may vary dependent on the model and equipment fitted.



Height: 1,655 mm



Length: 4,796 mm



Width: 1,916 mm

WWW



### Want to see the full specifications?

To view the full features and specifications of this vehicle, download the digital ebrochure or view the interactive brochure at <https://www.ford.co.uk/shop/research/brochure-download> or scan the QR code.

## Fuel, performance and emissions

	2.0L Ford EcoBlue diesel (with Auto Start-Stop)	2.0L Ford EcoBlue diesel (with Auto Start-Stop)	2.0L Ford EcoBlue diesel (with Auto Start-Stop)	2.0L Ford EcoBlue diesel (with Auto Start-Stop)
<b>Available on</b>	Zetec, Titanium	Zetec, Titanium	ST-Line, Vignale	ST-Line, Vignale
<b>5-door</b>				
Emission standard	Euro 6d Temp	Euro 6d Temp	Euro 6d Temp	Euro 6d Temp
Fuel type	Diesel	Diesel	Diesel	Diesel
Maximum Power PS (kW)	150 (110)	150 (110)	190 (140)	190 (140)
Torque Nm	350	350	400	400
<b>CO<sub>2</sub> emissions (NEDC equivalent)<sup>o</sup></b>				
17"-19" Wheel	130	138	134	151
Transmission	6-speed manual	8-speed automatic	8-speed automatic	8-speed automatic
Drive	4x2	4x2	4x2	4x4
<b>Combined Fuel Consumption<sup>o</sup> (WLTP figures with Options)</b>				
Lowest Performing MPG (L/100km) combined	46.3 (6.1)	43.5 (6.5)	43.5 (6.5)	40.9 (6.9)
Highest Performing MPG (L/100km) combined	47.1 (6.0)	43.5 (6.5)	43.5 (6.5)	40.9 (6.9)
<b>Performance<sup>o</sup></b>				
Max. speed (mph)	123	122	129	128
0-62 mph (secs)	10.8	10.8	9.5	10.5
31-62 mph* (secs)	10.8	n/a	n/a	n/a
<b>Weights and loads</b>				
Kerbweight (kg) <sup>o</sup>	1901	1905	1902	1984
Gross vehicle mass (kg)	2555	2610	2555	2635
Gross train mass (kg)	4355	4555	4355	4635
Max. Towable Mass (braked) (12%*) (kg)	1800	1800	2000	2000
Max. Towable Mass (braked) (8%*) (kg)	2000	2000	2000	2000
Max. Towable Mass (unbraked) (kg)	750	750	750	750

The test used to establish fuel consumption and CO<sub>2</sub> figures has changed to deliver results that are more representative of real life driving. The Worldwide Harmonised Light Vehicle Test Procedure (WLTP) has replaced the old NEDC test. The Fuel Consumption figures shown are derived from the new WLTP test. However, until 6th April 2020, the published CO<sub>2</sub> figures will be the NEDC equivalent and this will be used to calculate Vehicle Excise Duty.

The table below shows the fuel consumption (WLTP) figures for each available engine on the Ford S-MAX. These figures may not reflect real life driving results, which will depend upon a number of factors including the accessories fitted, variations in weather, driving styles and vehicle load. The figures shown are for comparability purposes; only compare fuel consumption and CO<sub>2</sub> figures with other vehicles tested to the same technical procedures.

<sup>o</sup>In 4th gear. <sup>o</sup>Ford test figures. <sup>oo</sup>The declared Fuel/Energy Consumptions, CO<sub>2</sub> emissions and electric range are measured according to the technical requirements and specifications of the European Regulations (EC) 715/2007 and (EC) 692/2008 as last amended. Fuel consumption and CO<sub>2</sub> emissions are specified for a vehicle variant and not for a single car. The applied standard test procedure enables comparison between different vehicle types and different manufacturers. In addition to the fuel efficiency of a car, driving behaviour as well as other non-technical factors play a role in determining a car's fuel/energy consumption, CO<sub>2</sub> emissions and electric range. CO<sub>2</sub> is the main greenhouse gas responsible for global warming. A guide on fuel economy and CO<sub>2</sub> emissions which contains data for all new passenger car models is available at any point of sale free of charge or can be downloaded under <http://carfueldata.dft.gov.uk>.

<sup>o</sup>Represents the lightest kerbweight assuming driver at 75 kg, full fluid levels and 90% fuel levels, subject to manufacturing tolerances and options, etc., fitted. Towing limits quoted represent the maximum towing ability of the vehicle at its Gross Vehicle Mass to restart on a 12 per cent gradient at sea level. The performance and economy of all models will be reduced when used for towing. Gross Train Mass includes trailer weight.

\*Gradient at sea level.

## Colour and trim

	Standard body colours	Premium body colours*							Exclusive body colours*	
	Blazer Blue	Frozen White	Shadow Black**	Blue Panther	Chrome Blue	Magnetic	Moondust Silver	Stealth	Ruby Red**	White Platinum (Tri-coat)
<b>Zetec</b>										
Manhattan in Ebony Cloth	Available	Available	Available		Available	Available	Available		Available	
Calder in Ebony (with optional Ergo Seat)	Optional, at extra cost	Optional, at extra cost	Optional, at extra cost		Optional, at extra cost	Optional, at extra cost	Optional, at extra cost		Optional, at extra cost	
<b>Titanium</b>										
Axis in Ebony Cloth	Available	Available	Available		Available	Available	Available		Available	
Calder in Ebony Cloth (with optional Ergo Seat)	Optional, at extra cost	Optional, at extra cost	Optional, at extra cost		Optional, at extra cost	Optional, at extra cost	Optional, at extra cost		Optional, at extra cost	
Salerno Leather in Ebony (part of optional Titanium Lux Pack)	Part of a pack, at extra cost	Part of a pack, at extra cost	Part of a pack, at extra cost		Part of a pack, at extra cost	Part of a pack, at extra cost	Part of a pack, at extra cost		Part of a pack, at extra cost	
<b>ST-Line</b>										
Salerno Part-Leather in Ebony with Red Stitching	Available	Available	Available		Available	Available	Available	Available	Available	
Salerno Full Leather in Ebony (part of optional ST-Line Lux Pack)	Part of a pack, at extra cost	Part of a pack, at extra cost	Part of a pack, at extra cost		Part of a pack, at extra cost	Part of a pack, at extra cost	Part of a pack, at extra cost	Part of a pack, at extra cost	Part of a pack, at extra cost	
<b>Vignale</b>										
Windsor Full Perforated Leather in Ebony with Multi Contour Front Seats				Available		Available			Available	Available

Available

Optional, at extra cost

Part of a pack, at extra cost

\*Metallic and exclusive body colours are optional, available at extra cost. \*\*Shadow Black and Ruby Red will be replaced by Absolute Black and Lucid Red from 2020.

## Styling and appearance

	Zetec	Titanium	ST-Line	Vignale
<b>Wheels</b>				
Alloy – 17", 10-spoke, Sparkle Silver finish	Available			
Alloy – 17", 5x2-spoke, Sparkle Silver finish		Available		
Alloy – 18", 10-spoke, machined/painted Matt Black finish			Available	
Alloy – 19", 5x2-spoke, Luster Nickel finish		Optional, at extra cost		
Alloy – 19", 5x2-spoke, Rock Metallic finish			Optional, at extra cost	
Alloy – 19", 10-spoke, Polished Aluminium finish				Available
Locking wheel nuts	Available	Available	Available	Available
<b>Paint</b>				
Door mirrors – Body colour skull cap	Available	Available	Available	Available

Standard

Optional, at extra cost

Part of option pack, at extra cost

\*The wheel you choose will be fitted with the tyre size noted, but no choice of tyre brand is available.

## Styling and appearance

	Zetec	Titanium	ST-Line	Vignale
<b>Design features</b>				
Black finish on upper doorline	■		■	
Chrome finish day light opening (DLO) surround		■		■
Door handles – Body colour	■	■	■	
Door handles – Body colour with bright insert				■
Exhaust – Dual (available with 150 PS engines)	■	■		
Exhaust – Dual, chrome finish trim (available with 190 PS engines)			■	■
Rear Bumper – Painted body colour upper/self colour black lower	■			
Rear Bumper – Painted body colour upper/painted body colour lower		■	■	
Front and rear bumper – Painted body colour upper/painted body colour lower	■	■		■
Front Bumper – Painted body colour upper and lower – Sport Design lower; rear bumper – lower body colour			■	
Front and rear bumper – Body colour lower and upper with chrome accents and High Gloss Black rear diffuser				■
Front fog lights – Halogen	■			
Front fog lights – LED		■	■	■
Fog light bezel – Carbon Black (high gloss) bezel with Bright Chrome surround	■	■		
Fog light bezel – Ebony bezel with body colour surround			■	
Fog light bezel – Carbon Black (high gloss) bezel (Vignale style) with Satin Chrome surround				■
Front lower grille – High Gloss and Matt Carbon Black	■			
Front lower grille – High Gloss and Matt Carbon Black Bars			■	
Front lower grille – High Gloss and Matt Carbon Black		■		■
Front upper grille – High Gloss and Matt Carbon Black chrome finish horizontal bars and surround	■	■		
Front upper grille – Honeycomb with High Gloss and Matt Carbon Black			■	
Front upper grille – Satin Chrome Flying V Mesh – Matt Carbon Black				■
Rocker panel mouldings – self colour black	■			
Rocker panel mouldings – bodycolour painted		■	■	■
Rear spoiler – Body colour			■	■
Rear privacy glass	□	■	■	■
Roof rails – Silver finish (not available with panorama roof)		■		■
Roof rails – Carbon Black finish (not available with panorama roof)			■	
Power tailgate (as part of optional Titanium/ST-Line Lux Packs)		▣	▣	■
Scuff plates – Silver finish front door	■	■		■
Scuff plates – Bright finish front door with ST-Line			■	
Pedal set with aluminium covers			■	

## Driving experience

	Zetec	Titanium	ST-Line	Vignale
<b>Driver assistance</b>				
Active Park Assist (enhanced) – including Perpendicular park assist and Park-Out Assist (part of optional Driver Assistance Pack)		▣	▣	▣
Rear-view camera (part of optional Driver Assistance Pack)		▣	▣	■
Front video camera with split-view (part of optional Driver Assistance Pack)		▣	▣	▣
Parking distance sensors – Front and rear	■	■	■	■
Cruise control – includes Speed Limiter and Intelligent speed assistance	■	■	■	■
Adaptive Cruise Control (with Stop & Go for automatic transmission only)(part of optional Driver Assistance Pack)		▣	▣	▣
Pre-Collision Assist with pedestrian and cyclist detection <sup>1)</sup>	■	■	■	■
Blind Spot Information System with Cross Traffic Alert <sup>2)</sup> (part of optional Driver Assistance Pack)		▣	▣	▣
Lane-Keeping System <sup>2)</sup> (including Lane-Keeping Aid <sup>2)</sup> , Lane-Keeping Alert <sup>2)</sup>		■	■	■
Traffic Sign Recognition <sup>2)</sup>		■	■	■
Electric power-assisted steering (EPAS)	■	■	■	■
<b>Exterior lighting</b>				
Front fog lights	■	■	■	■
Headlights – Courtesy delay	■	■	■	■
Headlights – Halogen projector	■	■	■	■
Headlights – Adaptive LED headlights (with Glare-Free high beam and dynamic levelling) (as part of optional Titanium/ST-Line Lux Packs)		▣	▣	■
Headlights – Daytime running lights	■			
Headlights – LED daytime running lights		■	■	■
Headlights – Manual levelling control		■	■	
Headlights – Dynamic auto levelling (included with Adaptive LED headlights) (part of Titanium/ST-Line Lux Packs)		▣	▣	■
Rear lights with LED technology	■	■	■	■
Shift Indicator light (enabled)	■	■	■	■
<b>Suspension</b>				
Sport			■	
Self-levelling (not available with AWD)	□	□		□
<b>Instruments and controls</b>				
Shift transition with paddle shifters (only available with automatic transmissions on ST-Line, only available with automatic transmission and trailer coupling on Zetec, Titanium, Vignale; included with towing pre-pack and automatic transmission when trailer coupling is not present)	▣/▣	▣/▣	■	▣/▣

Standard ■

Optional, at extra cost □

Part of option pack, at extra cost ▣

<sup>1)</sup>Safety feature, <sup>2)</sup>Driver assistance feature.

## Performance and efficiency

	Zetec	Titanium	ST-Line	Vignale
<b>Technology</b>				
Auto Start-Stop system	<input checked="" type="checkbox"/>	<input checked="" type="checkbox"/>	<input checked="" type="checkbox"/>	<input checked="" type="checkbox"/>

## Comfort and convenience

	Zetec	Titanium	ST-Line	Vignale
<b>Interior convenience</b>				
Centre console – with fixed armrest and stowage	<input checked="" type="checkbox"/>	<input checked="" type="checkbox"/>	<input checked="" type="checkbox"/>	<input checked="" type="checkbox"/>
Centre console – with fixed leather armrest and stowage	<input checked="" type="checkbox"/>	<input checked="" type="checkbox"/>	<input checked="" type="checkbox"/>	<input checked="" type="checkbox"/>
Centre console – with uncovered moulded cup holders	<input checked="" type="checkbox"/>	<input checked="" type="checkbox"/>	<input checked="" type="checkbox"/>	<input checked="" type="checkbox"/>
Overhead console – full length with sunglasses stowage and child observation mirror	<input checked="" type="checkbox"/>	<input checked="" type="checkbox"/>	<input checked="" type="checkbox"/>	<input checked="" type="checkbox"/>
Sunblinds – Rear doors, manual (with optional Panorama Roof)	<input checked="" type="checkbox"/>	<input checked="" type="checkbox"/>	<input checked="" type="checkbox"/>	<input checked="" type="checkbox"/>
<b>Audio and communication systems</b>				
Ford SYNC 3 DAB Radio/CD, single CD, AM/FM dual tuner radio, 8" TFT LCD touchscreen, 8 speakers, Voice Control, touchscreen, media hub with 2 USB slots, FordPass Connect* (embedded modem)	<input checked="" type="checkbox"/>	<input checked="" type="checkbox"/>	<input checked="" type="checkbox"/>	<input checked="" type="checkbox"/>
Ford SYNC 3 DAB Radio/CD/navigation system, single CD, AM/FM dual tuner radio, 8" TFT LCD touchscreen, 8 speakers, Voice Control, touchscreen, media hub with 2 USB slots, FordPass Connect* (embedded modem)	<input checked="" type="checkbox"/>	<input checked="" type="checkbox"/>	<input checked="" type="checkbox"/>	<input checked="" type="checkbox"/>
Premium Ford SYNC 3 SONY DAB Radio/CD/navigation system, single CD, AM/FM dual tuner radio, 8" TFT LCD touchscreen, 12 speakers, Voice Control, touchscreen, media hub with 2 USB slots, FordPass Connect* (embedded modem)	<input checked="" type="checkbox"/>	<input checked="" type="checkbox"/>	<input checked="" type="checkbox"/>	<input checked="" type="checkbox"/>
<b>Climate control</b>				
Air conditioning – Dual-zone Electronic Automatic Temperature Control (DEATC)	<input checked="" type="checkbox"/>	<input checked="" type="checkbox"/>	<input checked="" type="checkbox"/>	<input checked="" type="checkbox"/>
Rear air conditioning – Tri-zone Electronic Automatic Temperature Control	<input checked="" type="checkbox"/>	<input checked="" type="checkbox"/>	<input checked="" type="checkbox"/>	<input checked="" type="checkbox"/>
<b>Interior lighting</b>				
Courtesy lights – LED third row reading lights (included with third row seats)	<input checked="" type="checkbox"/>	<input checked="" type="checkbox"/>	<input checked="" type="checkbox"/>	<input checked="" type="checkbox"/>
Courtesy lights – Ambient lighting (front door release handles, console main stowage bin, media hub, console pass through and front and rear footwells)	<input checked="" type="checkbox"/>	<input checked="" type="checkbox"/>	<input checked="" type="checkbox"/>	<input checked="" type="checkbox"/>
Courtesy lights – Ambient lighting (front and rear door release handles, front and rear door map pockets, console cupholders, console main stowage bin, media hub, console pass through and front and rear footwells)	<input checked="" type="checkbox"/>	<input checked="" type="checkbox"/>	<input checked="" type="checkbox"/>	<input checked="" type="checkbox"/>

## Comfort and convenience

	Zetec	Titanium	ST-Line	Vignale
<b>Seating</b>				
Front seats – Sports style	<input checked="" type="checkbox"/>	<input checked="" type="checkbox"/>	<input checked="" type="checkbox"/>	<input checked="" type="checkbox"/>
Front seats – Sports plus style	<input checked="" type="checkbox"/>	<input checked="" type="checkbox"/>	<input checked="" type="checkbox"/>	<input checked="" type="checkbox"/>
Front seat – 4-way manual driver's seat (fore/aft/up/down) with driver's manual lumbar support adjustment	<input checked="" type="checkbox"/>	<input checked="" type="checkbox"/>	<input checked="" type="checkbox"/>	<input checked="" type="checkbox"/>
Front seat – 18-way ERGO driver's seat (8-way manual seat adjust, lumbar seat 4-way power, front 4-way head restraint, seat recliner-lever and cushion extension)	<input checked="" type="checkbox"/>	<input checked="" type="checkbox"/>	<input checked="" type="checkbox"/>	<input checked="" type="checkbox"/>
Front seat – 10-way power driver's seat (power fore/aft/up/down/recline/tilt/2-way power lumbar) (part of optional Titanium Lux Pack)	<input checked="" type="checkbox"/>	<input checked="" type="checkbox"/>	<input checked="" type="checkbox"/>	<input checked="" type="checkbox"/>
Front seat – 10-way power driver's multi-contour seat (only available with perforated leather seats) (power fore/aft/up/down/recline/tilt)	<input checked="" type="checkbox"/>	<input checked="" type="checkbox"/>	<input checked="" type="checkbox"/>	<input checked="" type="checkbox"/>
Front seats – 4-way manual passenger seat (fore/aft/up/down/recline)	<input checked="" type="checkbox"/>	<input checked="" type="checkbox"/>	<input checked="" type="checkbox"/>	<input checked="" type="checkbox"/>
Front seats – 10-way power passenger seat (fore/aft/up/down/recline/tilt/2-way power lumbar)	<input checked="" type="checkbox"/>	<input checked="" type="checkbox"/>	<input checked="" type="checkbox"/>	<input checked="" type="checkbox"/>
Front seats – 10-way power passenger multi-contour seat (only available with perforated leather seats) (power fore/aft/up/down/recline/tilt)	<input checked="" type="checkbox"/>	<input checked="" type="checkbox"/>	<input checked="" type="checkbox"/>	<input checked="" type="checkbox"/>
Front seats – 4-way manual height adjust passive head restraints	<input checked="" type="checkbox"/>	<input checked="" type="checkbox"/>	<input checked="" type="checkbox"/>	<input checked="" type="checkbox"/>
Front seats – Variable heated driver and passenger seat (part of optional Winter Pack)	<input checked="" type="checkbox"/>	<input checked="" type="checkbox"/>	<input checked="" type="checkbox"/>	<input checked="" type="checkbox"/>
Front seats – Climate driver and passenger seat (heated and cooled) (only available with perforated leather seats)	<input checked="" type="checkbox"/>	<input checked="" type="checkbox"/>	<input checked="" type="checkbox"/>	<input checked="" type="checkbox"/>
Front seats – Seat back tray tables (not available with optional Ergo Seats)	<input checked="" type="checkbox"/>	<input checked="" type="checkbox"/>	<input checked="" type="checkbox"/>	<input checked="" type="checkbox"/>
Seats – Perforated leather/suede-trimmed with red stitching (includes 10-way power driver's seat adjustment with memory, 10-way power passenger's seat adjustment, heated front seats, and exterior mirrors with memory)	<input checked="" type="checkbox"/>	<input checked="" type="checkbox"/>	<input checked="" type="checkbox"/>	<input checked="" type="checkbox"/>
Seats – Leather-trimmed (includes 10-way power driver's seat adjustment with memory, 10-way power passenger's seat adjustment, heated front seats, and exterior mirrors with memory) with red stitching for ST-Line	<input checked="" type="checkbox"/>	<input checked="" type="checkbox"/>	<input checked="" type="checkbox"/>	<input checked="" type="checkbox"/>
Seats – Premium perforated luxury leather-trimmed	<input checked="" type="checkbox"/>	<input checked="" type="checkbox"/>	<input checked="" type="checkbox"/>	<input checked="" type="checkbox"/>
Seats – Multi-contour seatbacks (includes 10-way power driver's seat adjustment with memory, 10-way power passenger's seat adjustment, climate-controlled front seats, and exterior mirrors with memory)	<input checked="" type="checkbox"/>	<input checked="" type="checkbox"/>	<input checked="" type="checkbox"/>	<input checked="" type="checkbox"/>
Rear seats – Second row seats with manual easy entry, fold-flat, slide and recline	<input checked="" type="checkbox"/>	<input checked="" type="checkbox"/>	<input checked="" type="checkbox"/>	<input checked="" type="checkbox"/>
Rear seats – Third row seats with manual fold-flat and manual easy entry to the third row	<input checked="" type="checkbox"/>	<input checked="" type="checkbox"/>	<input checked="" type="checkbox"/>	<input checked="" type="checkbox"/>
Rear seats – Third row seats with easy fold-flat and manual easy entry to the third row	<input checked="" type="checkbox"/>	<input checked="" type="checkbox"/>	<input checked="" type="checkbox"/>	<input checked="" type="checkbox"/>

Standard

Option, at extra cost

Part of an option pack, at extra cost

\*Ford Emergency Assistance is an innovative SYNC feature that uses a Bluetooth®-paired and connected mobile phone to help vehicle occupants initiate a direct call to the local Communications Centre, following a vehicle crash event involving an airbag deployment or fuel pump shut off. The feature operates in more than 40 European countries and regions.\*\*FordPass Connect features and Live Traffic are complimentary for 2 years following registration of the vehicle, thereafter a subscription is payable.

Wi-Fi hotspot includes complimentary wireless data trial that begins at time of activation and expires at the end of 3 months or when 3GB of data is used, whichever comes first. Afterwards a subscription to Vodafone is required (please refer to their website for details of data packages).

## Comfort and convenience

	Zetec	Titanium	ST-Line	Mignale
<b>Instruments and controls</b>				
Door mirrors – Power-operated, heated and power-foldable with body colour housings, side indicators and puddle lights	■	■	■	■
Door mirrors – Power-operated, heated and power-foldable with body colour housings, side indicators, puddle lights and memory	■	□	■	■
Door mirrors – Body colour skull cap	■	■	■	■
Panorama roof – Fixed (includes electric sunblind) (not available with roof rack side rails)	■	□	□	□
Headlights – Jet wash	■	■	■	■
Wipers – Automatic windscreen wash wipe with variable sensitivity adjustment (included with auto-dimming rear-view mirror)	■	■	■	■
Wipers – Ford Clearview front wiper system	■	■	■	■
Gearshift knob – Leather-trimmed (manual transmission only)	■	■	■	■
Gearshift knob – Leather-trimmed with red stitching (manual transmission only)	■	■	■	■
Rotary gearshift knob (automatic transmission only)	■	■	■	■
Steering wheel – Leather-trimmed	■	■	■	■
Steering wheel – Perforated leather-trimmed steering wheel with red stitching	■	■	■	■
Steering wheel – Heated (part of optional Winter Pack)	■	□	■	■
Instrument cluster Level 1 – 4.2" colour TFT display	■	■	■	■
Instrument cluster Level 3 – 10.1" colour TFT display	■	■	■	■
Ford Power starter button	■	■	■	■
Ford KeyFree System with Ford Power starter button	■	■	■	■
Hands-free tailgate (as part of optional Titanium/ST-Line Lux Pack)	■	□	□	■
Windows – Power front and rear with one-shot up and down	■	■	■	■
Windows – Global lowering/closing	■	■	■	■
Steering column – Rake- and reach-adjustable	■	■	■	■

## Comfort and convenience

	Zetec	Titanium	ST-Line	Mignale
<b>Technology</b>				
Quickclear heated windscreen, with heated windscreen washer jets	■	■	■	■
Mirror – Auto-dimming rear-view	■	■	■	■
MyKey	■	■	■	■
<b>Option Packs</b>				
Driver Assistance Pack – Premium Ford SYNC 3 SONY DAB, Active Park Assist with Parallel and Perpendicular parking, Park-Out Assist (parallel only), Front and rear-view camera Blind Spot Information System (BLIS) with Cross Traffic Alert	■	□	□	□
Winter Pack – Heated windscreen and heated steering wheel	■	□	■	■
Titanium Lux Pack – Adaptive LED Headlamps, Leather Seats, Variable Heated Front Seats, 8-way Power Front Seats and Power Liftgate	■	□	■	■
ST-Line Lux Pack – Adaptive LED Headlamps, Leather Seats with Red Stitching, Variable Heated Front Seats and Power Liftgate	■	■	□	■

Standard ■

Option, at extra cost □

Part of an option pack, at extra cost □

\*Ford Emergency Assistance is an innovative SYNC feature that uses a Bluetooth®-paired and connected mobile phone to help vehicle occupants initiate a direct call to the local Communications Centre, following a vehicle crash event involving an airbag deployment or fuel pump shut off. The feature operates in more than 40 European countries and regions.\*\*FordPass Connect features and Live Traffic are complimentary for 2 years following registration of the vehicle, thereafter a subscription is payable.

Wi-Fi hotspot includes complimentary wireless data trial that begins at time of activation and expires at the end of 3 months or when 3GB of data is used, whichever comes first. Afterwards a subscription to Vodafone is required (please refer to their website for details of data packages).

## Safety and security

	Zetec	Titanium	ST-Line	Mignale
<b>Safety</b>				
Electric parking brake (EPB)	■	■	■	■
Ford Intelligent Protection System (IPS) <sup>1)</sup>	■	■	■	■
Anti-lock braking system (ABS) with electronic brake-force distribution (EBD) <sup>1)</sup>	■	■	■	■
Curve Control <sup>1)</sup>	■	■	■	■
Electronic Stability Control (ESC) – Includes Trailer Sway Control <sup>1)</sup> and Hill Start Assist <sup>2)</sup>	■	■	■	■
Active Rollover Protection <sup>1)</sup>	■	■	■	■
Airbags – Driver's and front passenger's <sup>3)</sup>	■	■	■	■
Airbags – Front side impact <sup>1)</sup>	■	■	■	■
Airbags – Driver's knee bolster <sup>1)</sup>	■	■	■	■
Airbags – Driver and passenger first, second and third row side curtain <sup>1)</sup>	■	■	■	■
Airbags – Rear side impact (2nd row outboard) <sup>1)</sup>	■	■	■	■
Airbags – Passenger airbag deactivation switch <sup>1)</sup>	■	■	■	■
Seats – ISOFIX mounting provision for rear child seats (outer seats only) <sup>1)</sup>	■	■	■	■
<b>Security</b>				
Childproof locks on rear doors	■	■	■	■
Remote, power central single locking	■	■	■	■
Thatcham Category I alarm with volume sensing, perimeter alarm battery backed (includes remote central/double locking)	■	■	■	■
<b>Brakes</b>				
Brake calipers (red)			■	

\*A rear-facing child seat should never be placed in the front passenger seat, when the Ford vehicle is equipped with an operational front passenger's airbag. The safest place for children is properly restrained on the rear seat. \*Ford Emergency Assistance is an innovative SYNC feature that uses a Bluetooth®-paired and connected mobile phone to help vehicle occupants initiate a direct call to the local Communications Centre, following a vehicle crash event involving an airbag deployment or fuel pump shut off. The feature operates in more than 40 European countries and regions.

## Utility

	Zetec	Titanium	ST-Line	Mignale
<b>Body</b>				
Windows – Fixed rear quarter glass	■	■	■	■
<b>Carpet and trim</b>				
Floor mats – Carpet, front and rear deluxe (with red-stitching on ST-Line)	■	■	■	
Floor mats – Luxury with serged edging				■
<b>Electrical</b>				
Centre console – 230V power outlet		■	■	■
<b>Exterior functional</b>				
Rear bumper anti-scratch pad – Self colour	■	■	■	■
Retractable tow bar with electric release button in load compartment (including 13-pin electrical kit, permanent power supply, Trailer Sway Control and Hill Start Assist) (not available with self-levelling suspension) (not available on ST-Line))	□	□		□
Removable (detachable) tow bar (not available on ST-Line)	□	□		□
Full ST-Line bodystyling kit – Unique front, rear bumpers and side skirts in body colour, unique fog light bezels, unique upper and lower grilles with honeycomb design in High Gloss Black			■	
<b>Loadspace compartment</b>				
Load compartment 4 tie down rings	■	■	■	■
Loadfloor – Metal sheet covered with carpet	■	■	■	■
Loadfloor storage compartment with latch and pull cup handle	■	■	■	■
Tonneau cover	■	■	■	■

Standard ■  
 Option at extra cost □  
 Part of an option pack at extra cost ◻

## Making ownership easy and affordable.

Take advantage of a range of invaluable services and make the most of your car.

### FORD SERVICE

Allows you to relax knowing we're always by your side.

With Ford, the service doesn't end when you leave the showroom. Ford Service is designed to keep your Ford in great condition and help you make the most of your car – throughout its life.

- Ford Online Service Booking
- Comprehensive service and maintenance plans
- Use of genuine Ford parts for added peace of mind
- Ford trained technicians using the latest diagnostic equipment and tools
- One Call for everything Ford 0203 564 4444
- Ford Accident Management, service free to all drivers

Also, every Ford vehicle comes with 12 months UK & European Roadside Assistance from the date of registration. This can be extended for a further 12 months when your vehicle has a Scheduled service at a participating Ford Dealer.

For more information visit [www.ford.co.uk/fordservice](http://www.ford.co.uk/fordservice)

### FORD INSURE

Trust your car insurance to the people that know it best. Designed specifically for Ford owners, it offers value, simplicity and a range of benefits that come as standard.

- Repairs carried out by experts at a Ford Accident Repair Centre
- Guaranteed repairs for as long as you own your car
- Genuine Ford Parts and manufacturer-spec glass
- Courtesy car while your Ford is being repaired at one of our Approved Repair Centres
- Free 24 hour emergency help lines
- Named Drivers earn a Ford Insure No Claims Bonus which can be used on any Ford Insure car insurance policy
- Stereo cover for any audio/visual equipment permanently fitted by the manufacturer
- Up to 90 days cover to drive in Europe

So, for cover designed with your Ford in mind, please call our UK Customer Service Team on 0333 234 9976 or go online at [www.fordinsure.co.uk](http://www.fordinsure.co.uk)

Terms and conditions apply.

Ford Insure contracts are arranged, administered and provided by EUI. EUI is a subsidiary of Admiral Group and is authorised and regulated by the Financial Conduct Authority. Registration number 309378. Registered in England and Wales as EUI Limited Reg. No 2686904. Registered Address: Tŷ Admiral, David Street, Cardiff CF10 2EH

### FORD PROTECT

Extend your warranty up to 5 years/100,000 miles with Ford Protect.

Extend your standard 3-year/60,000 miles warranty and enjoy worry-free motoring for many years to come. Ford Protect provides a range of key benefits including\*:

- High flexibility in duration and mileage
- Cover against unexpected electrical and mechanical repair costs in the UK and Europe
- With a Ford Protect Plan, the price of covered parts and labour are guaranteed for the length of your plan
- Help prolong the lifespan of your Ford vehicle
- Protects your vehicle resale value

To increase potential resale value, Ford Protect New Vehicle Warranties are transferable to the new owner should you decide to sell your vehicle.

\*Ford Protect terms and conditions apply see [ford.co.uk/extended-warranties](http://ford.co.uk/extended-warranties) for more information.

### FORD Protect Extended Warranty for New Vehicles

	Total Mileage (mls)
4 Year Protection	80,000 mls
5 Year Protection	100,000 mls



## FORD S-MAX Next steps



### try

Visit your Ford Dealer and test drive the Ford S-MAX for yourself. Find your local Dealer: [www.ford.com/SBE/DealerLocator](http://www.ford.com/SBE/DealerLocator)



### build

Go online and build and price your new Ford S-MAX to your exact specification at <https://www.ford.co.uk/cars>



### finance

When it comes to financing your vehicle, our size and expertise means we're well placed to provide you with a wide range of finance products.

Ford Credit\* provides a range of finance products for your vehicle whether you are a private or business user.

Ford Lease\*\* specialises in contract hire and leasing and provides an alternative range of finance plans which can be tailored to suit your business. Business users only.

For more information about our finance products visit [www.ford.co.uk](http://www.ford.co.uk)

\*Finance subject to status. Freepost Ford Credit.

Ford Credit is a trading style of FCE Bank plc, which is authorised by the Prudential Regulation Authority and regulated by the Financial Conduct Authority and the Prudential Regulation Authority under firm reference number 204469.

\*\*Ford Lease is provided by ALD Automotive Limited acting as Ford Lease BS16 7LB. ALD is registered in England No. 987418. ALD is authorised and regulated by the Financial Conduct Authority.



### own

When you drive away in your new vehicle, we're with you all the way. Ford has a large authorised service network to help you keep your vehicle in the best condition.

And should your new Ford ever require accident repair, a Ford Accident Repair Centre is the best place to get your vehicle back to its pre-accident condition and on the road as quickly as possible.



### FordPass

FordPass is a new platform that will empower you to rethink the way you move. Finds parking locations nearby, contains vehicle and finance details, dealer information and a host of useful guides.

Live Traffic access is free for the first 2 years following the purchase of a new Ford featuring SYNC 3 with navigation; thereafter there is an annual licence fee.

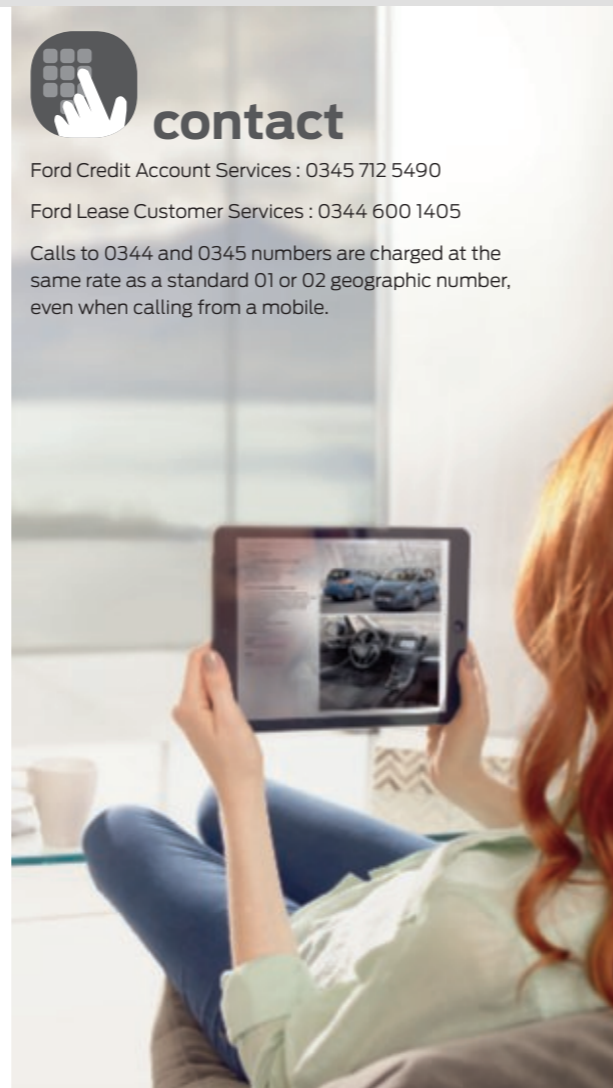


### contact

Ford Credit Account Services : 0345 712 5490

Ford Lease Customer Services : 0344 600 1405

Calls to 0344 and 0345 numbers are charged at the same rate as a standard 01 or 02 geographic number, even when calling from a mobile.



## FORD Protect Extended Warranty for New Vehicles

3-year/60,000 miles\* Base Warranty (first year unlimited mileage)

1-year/unlimited miles\* Ford Assistance Roadside Cover (Europe)

Ford Protect Premium Plans, including scheduled servicing and extended Ford Assistance

3-year/60,000 miles\* Paint Warranty (first year unlimited mileage)

12-year/unlimited miles\* Perforation Warranty

All S-Max Models



**Illustrations, descriptions and specifications.** This catalogue was correct at the time of going to print. However, Ford policy is one of continuous product development. The right is reserved to change specifications, colours and recommended prices of the models and items illustrated and described in this publication at any time. For the latest details always consult your Ford Dealer. **Optional equipment.** Throughout this publication, wherever a feature is described as being an 'Option' or 'Option Fitment/Pack' etc, you should assume that it will be at extra cost to the base vehicle, unless specifically stated to the contrary. All models and colour combinations are subject to availability. **Note.** Some images portrayed are of a pre-production model and/or are computer generated, therefore, the design/features on the final version of the vehicle may differ in various respects. In addition, some of the features shown on the vehicles may be optional. **Note.** This brochure contains both original Ford accessories as well as a range of products from our suppliers. Fitment of accessories may have an impact on your vehicle's fuel consumption. ♦ The identified accessories are carefully selected third party supplier branded accessories which do not come with a Ford warranty but are covered by the third party supplier's own warranty, the details of which can be obtained from your Ford Dealer. **Note.** The Bluetooth® word mark and logos are owned by the Bluetooth SIG, Inc. and any use of such marks by Ford Motor Company is under licence. The iPod word mark and logos are the property of Apple Inc. Other trademarks and trade names are those of their respective owners. **Note.** Some driver assistance features and safety features described in this brochure are designed to function using sensors, whose performance may be affected under certain weather or environmental conditions.

**The Government fuel figures** do not express or imply any guarantee of the fuel consumption of any particular vehicle. The vehicles themselves have not been tested and there are inevitably differences between individual vehicles of the same model. In addition, a vehicle may incorporate particular modifications. Furthermore, the driver's style and road and traffic conditions, as well as the extent to which the vehicle has been driven and the standard of maintenance, will affect its fuel consumption. **Insurance groups** are only as recommended by the Association of British Insurers. You should always consult your insurance adviser for confirmation.

#### Ford One Call

In the unlikely event that your Ford Dealer can't help you or if you need to speak to us directly, call 0203 564 4444

#### Ford Rental – local service nationwide

Car and Van rental from our latest model range. Contact your local Ford Dealer for more information

#### Ford Motability

Call our Ford Motability team on 0345 6040019

#### Finance

Ford Credit Customer Services 0345 712 5490.  
Ford Lease Customer Services 0344 600 1405  
Calls to 0344 and 0345 numbers are charged at the same rate as a standard 01 or 02 geographic number, even when calling from a mobile.

Published by Ford Motor Company Limited, Laindon, Essex, England. Registered in England No. 235446.

FA 1504/21  
BJN 207361. FoE H32E  
PN 878501/1219/2m/GBR en

October 2020.

© Ford Motor Company Limited.

MY 2020 GBR en



When you have finished with this brochure please recycle it.



Ford and BP – working together to reduce fuel consumption and emissions.



★★★★★

TEST 2015

