

FORD TOURNEO CUSTOM



Go Further



Visionary. Ingenious. Remarkable.
Every car bears his signature.

Henry Ford



Unlock extra content online. Use an appropriate app on your smartphone or tablet to scan the QR codes in this brochure.



360°

Model shown is a Tourneo Custom L1 Titanium in Deep Impact Blue premium paint (option) with rear mudflaps (option).





Room for everyone.

Settle into the Ford Tourneo Custom's roomy and luxurious interior and you'll enjoy the very latest in executive travel. Great to sit in and great to drive, it can accommodate up to nine people* in superb comfort. Or, thanks to its flexible seating configurations, be turned into one of the most spacious and well-appointed vehicles on the road, with plenty of extra room for bags and equipment.

*Available with a choice of eight or nine seats, including the driver. Model shown is a Ford Tourneo Custom (L2) Titanium in Tectonic Silver exclusive paint (option) with rear mudflaps (option).

The Tourneo Custom range.

People carriers don't come more versatile than the sensational Tourneo Custom. Choose from the L1 with ample space for up to nine people; the L2 with its increased rear luggage space; the Tourneo Custom Shuttle Bus L2 featuring Direct Access Seats; or the new Executive Seat Packs offering individual seats on floor-mounted rails. Whichever model you favour, you'll find its adaptable interior can be easily tailored to suit your business or family transport needs.

A welcome you can feel.

When it comes to comfort and well-being, Ford Tourneo Custom excels, offering the style and quality of a luxury saloon along with the versatility and interior space of a people mover, with seating for up to nine occupants. A wealth of thoughtful equipment provides even greater levels of refinement. The driver's seat and steering column are fully adjustable so you can find your ideal driving position, while your passengers can relax with options such as rear compartment air conditioning, reclining seat backs and leather trim.



Tourneo Custom L1.



Tourneo Custom 8-9 seats L1.

Tourneo Custom 8-9 seats L2.



Tourneo Custom L2.

Take a seat in premium class

Whatever you're carrying, from passengers and luggage to the unexpected, Tourneo Custom is versatile enough to find space for them all. Use all the seats to accommodate occupants in luxurious comfort. Or fold, tumble or stow the rear seats in more than 30 different ways to create limousine-like space or to maximise the luggage area, without leaving any seats behind.

Should you need even more room, the rear seats can be removed completely to leave a large and versatile space for whatever you need to carry.



Tourneo Custom Shuttle Bus

With a focus on passenger comfort, the new Tourneo Custom Shuttle Bus L2 offers generous space in each of its four rows of Direct Access Seats. Rear seats are easily reached from the kerb-side sliding side door. Available on all series, plus a full leather option, it's the ideal way to maximise passenger comfort and mobility over luggage space.



Tourneo Custom Shuttle Bus 9 seats L2.

An air of added comfort.

Wherever you sit in the Tourneo Custom you can be sure of an exceptionally comfortable ride. A separate air conditioning system is available for the rear passenger compartment, featuring its own rotary controls. (Standard on Titanium, option on Zetec) While a new rear air suspension system adjusts to maintain a constant ride height, regardless of the loading conditions. This means that rear seat passengers will enjoy smoother, more consistent ride comfort, whether they are travelling alone or with friends. (Option, not available with Shuttle Bus or Executive Seat Packs) (Available Q4 2016)



SelectShift automatic transmission

Tourneo Custom's new six-speed SelectShift automatic transmission delivers a smooth, relaxing driving experience, especially in busy stop-start traffic. The transmission allows you to change gear manually if you prefer, using the facia-mounted gearshift. And provides the ability to lockout gears in more challenging driving conditions, e.g. on slippery surfaces or steep gradients. (Option for 130 PS and 170 PS models) (Available from Q1 2017)

Model shown is a Tourneo Custom Zetec.





Luxurious individual seats and a rail-mounted table let passengers appreciate the amount of space the Tourneo Custom has to offer. All seats come with standard ISOFIX fixing points. (Option)

A great place to be together.

For an even more flexible travel experience, Tourneo Custom can now be supplied with a choice of two highly versatile rail-mounted seating systems. This luxurious option lets you tailor the seating layout even further.

The individual rear seats can be moved along the rails and locked easily into position for a wide variety of seating positions. The seats can be removed and you have the option to fix them into forward or rearward facing positions. A rail-mounted table is also available for added convenience.



Executive Seat Pack 1*

Individual seat configuration for all passengers. Features two rows of single rear seats rail-mounted on a multifunctional load floor, includes an 8-way adjustable and heated single front passenger seat. (Option on L1 and L2 Zetec)

Executive Seat Pack 2*

Leather-trimmed individual seat configuration for all passengers, featuring two rows of single rear seats, plus table, rail-mounted on a multifunctional load floor. Includes a 10-way adjustable and heated single front passenger seat, power-adjustable driver's seat and rear air conditioning. (Option on L1 and L2 Titanium)

Model shown left and opposite is a Tourneo Custom Titanium with Executive Seat Pack 2 with Medium Stone leather trim.
 Model shown centre is a Tourneo Custom Zetec with Executive Seat Pack 1 with Charcoal trim.
 *Available Q4 2016

Space for everything.

Tourneo Custom is the definitive Smart People Mover. Wide-opening sliding side doors and a large glazed tailgate offer easy access to the elegant and accommodating interior. While a host of thoughtful features, including convenient running boards and a range of useful stowage areas, provide even greater levels of space and versatility.



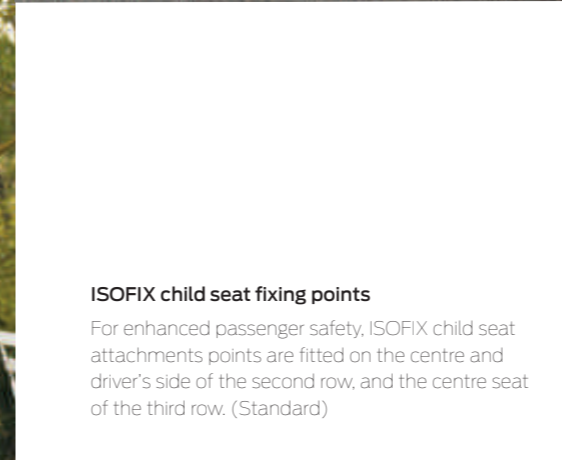
Sliding doors and running boards

Running boards fitted below the two sliding doors make getting in and out even easier, while enhancing Tourneo Custom's luxurious style. (Standard)



Privacy glass and rear window blinds

Integrated sunblinds can be easily raised to shield rear occupants from bright sunlight. Privacy glass adds a further level of screening and sophistication. (Sunblinds only fitted to 2nd row on L1 models; Option on Zetec, standard on Titanium)



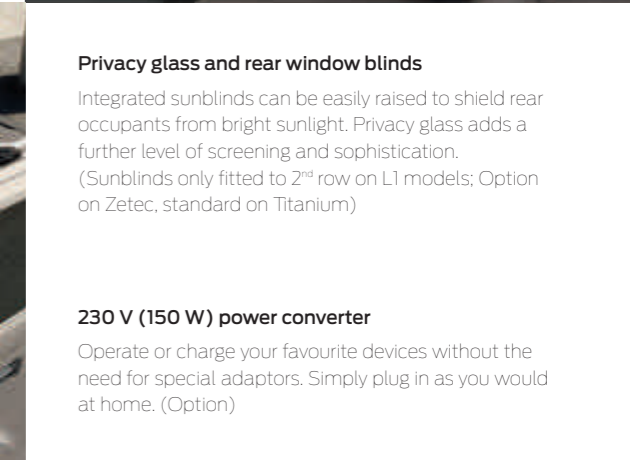
ISOFIX child seat fixing points

For enhanced passenger safety, ISOFIX child seat attachments points are fitted on the centre and driver's side of the second row, and the centre seat of the third row. (Standard)



Integrated roof rack

Tourneo Custom is available with an ingenious roof rack system that folds away flat when not in use to improve fuel economy and reduce wind noise. Capable of carrying loads of up to 130 kg, the roof rack features a load stop and integrated T-slots that are compatible with standard roof rack accessories to maximise its capability and usability. (Option)



230 V (150 W) power converter

Operate or charge your favourite devices without the need for special adaptors. Simply plug in as you would at home. (Option)



When there's no time to think, Tourneo Custom's already reacted.

Using radar and a camera, **Pre-Collision Assist**[®] keeps a watchful eye on the road ahead for other vehicles. The system is designed to read the road conditions and can alert you to a potential collision. If you don't respond to the system's warning signals, **Active Braking**[®] pre-charges the braking system and can automatically apply the brakes to help avoid or reduce the effect of any impact. (Option as part of a pack)

Set your desired speed and **Adaptive Cruise Control**[®] maintains a pre-set distance from the vehicle in front. If the sensors detect traffic slowing ahead, your vehicle automatically slows down. When traffic has cleared, your vehicle accelerates back to cruising speed. (Option as part of a pack)

Lane-Keeping Alert[®] can recognise when you approach lane markings without using the indicator and alert you with vibrations through the steering wheel. (Option or as part of a pack)

[®]Uses sensors.

Model shown is a Ford Tourneo Custom (L1) Titanium in Tectonic Silver exclusive paint (option). Integrated roof rack (option) with Thule[®] ski carrier Deluxe 727. (Accessory)

+Item covered by third party supplier's warranty, please see back cover for details.





Loaded with smart ideas.

Traffic Sign Recognition¹⁾ is designed to automatically read standard format road-speed signs and display the posted speed limit in the instrument cluster. (Standard with Adaptive Cruise Control)

Driver Alert²⁾ is designed to warn you if the system detects driving behaviour that indicates a drop in alertness levels. Initially, a warning icon is displayed in the instrument cluster, followed by a warning chime if driving alertness further declines. (Standard with Lane-Keeping Alert²⁾)

Transit Custom's **cruise control¹⁾** makes even the longest drive a relaxed affair. Simply set your desired speed and the system will maintain the pace until it's deactivated via a button on the steering wheel or by pressing the clutch or brake pedal. (Standard)

Adjustable Speed Limiter²⁾ lets you set a maximum speed anywhere between 15mph and 70mph, and prevents you from inadvertently accelerating above your desired speed. (Standard)



¹⁾Uses sensors.

²⁾Driver assistance feature.

| SYNC

You speak...

Welcome to the next generation of in-vehicle connectivity. Voice-activated **Ford SYNC with AppLink*** offers connectivity so advanced, it lets you play music, make and receive hands-free calls and even control apps on your smartphone - all with a simple voice command.



*Requires a compatible mobile phone. You can browse a list of AppLink-compatible apps from Ford.co.uk, or via the App Catalog available in iOS and Android stores. SYNC AppLink and Emergency Assistance not supported by all European languages. See Ford.co.uk for latest information.



“Read message”

“What's playing?”

“Play album Greatest Hits”

“Call Chris”

“Call Kristen”

“Shuffle”

“Call home”

“Call office”

... Ford SYNC responds.

Ford SYNC with SYNC AppLink* responds to spoken commands so you can keep your hands on the wheel and eyes on the road. Make and receive calls or play music via Bluetooth® technology. The system automatically uploads and remembers your phone contacts. And lets you access music from USB drive or other devices. Plus the Ford Emergency Assistance* is designed to assist occupants to place an emergency call and provide the emergency services with vehicle location information in their own language. (Standard)

*Ford Emergency Assistance is an innovative SYNC feature that uses a Bluetooth®-paired and connected mobile phone to help vehicle occupants initiate a call to the local Communications Centre, following a vehicle crash event involving an airbag deployment or fuel pump shut off. The feature operates in more than 40 European countries and regions.

Note The Bluetooth® trademark and logos are owned by the Bluetooth SIG, Inc. and any use of such marks by Ford Motor Company Limited and its associated companies is under licence. Other trademarks and trade names are those of their respective owners.

Model shown is a Tourneo Custom Titanium.



See and be seen.

Automatic headlights and day running lights

Stand out at any time with Tourneo Custom's powerful, high-mounted headlights, integrated day running lights and elegant tail lights. Automatic headlights switch on when light levels fall, while a courtesy delay feature means they remain on for a short time to illuminate your path in the dark. (Standard)

Projector-style headlights with static cornering lights

When you turn the steering wheel beyond 30 degrees, cornering lights illuminate the appropriate side of the road for extra visibility at night. (Standard)

Model shown is a Tourneo Custom L1 Titanium in Midnight Sky premium body colour (option).





Smart technology to keep you safe.

A full line-up of passive and active safety features make use of the latest technology to protect you, your passengers and your belongings.

Traction Control¹⁾

If wheel slip is detected at low speed, this system can distribute more torque to the wheel with most traction. (Standard)

Electronic Stability Control (ESC)²⁾

Designed to help you maintain control in extreme driving conditions. It senses when the vehicle deviates from your chosen line and aims to keep you on track by automatically regulating braking and engine output. (Standard)

Impressive towing ability

With up to 2,2000 kg maximum towing capacity, Tourneo Custom offers impressive pulling power along with a range of safety features to help keep you and your trailer secure. (Commercial users may require a digital tachograph. A fitting kit is available from your Transit Centre)

Trailer Sway Control¹⁾

Designed to detect when trailer sway occurs and to help counteract it to bring the trailer under control. (Standard, but activated with Ford trailer tow attachments, option)

Hill Start Assist²⁾

Designed to temporarily prevent you from rolling down a slope when you move your foot from the brake pedal to the accelerator pedal. It works in forward and reverse gears, so is ideal for towing or when on an incline. (Standard)

Side Wind Stabilisation²⁾

Helps the driver to stay in lane in strong, gusty conditions by using the ESC system to sense when the vehicle is being affected by crosswinds. (Standard)

Emergency Brake Assist²⁾

Designed to recognise an emergency braking situation and increase the pressure within the braking system to provide extra stopping power. (Standard)

Roll Stability Control²⁾

Ford's unique roll-rate sensor helps the Roll Stability Control system to keep the tyres grounded under conditions of high centre of gravity and when driving through off-camber turns. (Standard)

¹⁾Uses sensors.

²⁾Operates at speeds over 40 mph on multi-lane roads with clearly visible lane markings.

¹⁾Safety feature.

²⁾Driver assistance feature.



Engines that work for you.

360 Nm
105 PS

From
159 g/km

More efficient

**All-new Ford EcoBlue
2.0L TDCi 105 PS (77 kW)**

Engineered to meet strict Euro6 emissions standards, Tourneo Custom's all-new Ford EcoBlue TDCi 105 PS (77 kW)/360 Nm diesel engine combines outstanding fuel efficiency (from as low as 46.3 mpg* (6.1L/100 km*) combined) with excellent driveability and refinement. Its state-of-the-art design helps to keep running costs down without compromising on performance.

*NEDC test figures.

385 Nm
130 PS

From
159 g/km

More flexible

**All-new Ford EcoBlue
2.0L TDCi 130 PS (96 kW)**

The all-new Ford EcoBlue 130 PS (96 kW)/385 Nm Euro6 engine strikes a performance balance. It delivers the extra power and torque necessary to enhance Gross Train Mass (GTM) and braked trailer plate without compromising emissions.

405 Nm
170 PS

From
163 g/km

More powerful

**All-new Ford EcoBlue
2.0L TDCi 170 PS (125 kW)**

The outstanding all-new Ford EcoBlue 170 PS (125 kW) Euro6 engine develops an extraordinary 405 Nm of torque, delivering responsive, luxurious power and is the ideal choice if regularly towing while delivering outstanding fuel economy.

**55% less
NOx than the
previous
standard.**

Greater performance, fewer emissions.

Tourneo Custom's all-new Ford EcoBlue 2.0L TDCi diesel engines comply with the stringent Euro6 emissions standard, which specifies a 55% reduction in nitrogen oxide (NOx) emissions versus the Euro5 emissions standard. A Selective Catalytic Reduction (SCR) system uses AdBlue®, a urea/water-based fluid to convert NOx emissions in the exhaust gas into nitrogen and water. A particulate filter then reduces more than 99% of solid particulates from the vehicle's exhaust.

Model shown is a Tourneo Custom Zetec L1 in Moondust Silver premium body colour. (Option)



Zetec

Key exterior features

- 16" steel wheels with full wheel covers
- Projector-style headlights with integral cornering lights, day running lights with courtesy delay and front fog lights
- Body colour front bumper with chrome grille highlight
- Power-foldable heated door mirrors with blind spot eliminator and integrated side indicator
- Quickclear heated windscreen
- Twin side load doors with running boards
- Glazed rear liftgate with transmission linked wash/wipe
- Remote control central double locking with two key fobs
- Rear privacy glass with flip open second row windows
- Automatic headlights and front wipers
- Front and rear parking sensors

Key interior features

- Ford SYNC radio/CD system (includes Emergency Assistance*) with Bluetooth®, Voice Control, AppLink, audible text messaging and privacy mode, 4" TFT multi-functional display USB connectivity port, audio streaming, steering wheel remote audio controls, four front and six rear speakers
- Leather-trimmed steering wheel
- Cruise control with adjustable Speed Limiter
- Front air conditioning with pollen filter
- Carpet floor covering in passenger and luggage compartment
- Lockable glove box
- Auto-Start-Stop
- Trip Computer

- Electrically operated front windows with one-shot up/down on driver's side
- Rear courtesy lights with theatre-style dimming
- Side door step courtesy lights
- Driver's airbag, front passenger's airbag, front seat side thorax airbags and side curtain airbags

Option pack available:

- Premium Visibility Pack with Adaptive Cruise Control
- Includes: Traffic Sign Recognition, Pre-Collision Assist with Auto Braking, Lane Keeping Alert with Driver Alert, Rear-View Camera with Trailer Hitch Assist and Auto High Beam Headlights.

Engines

- 2.0 TDCi 105 PS (77 kW)/360 Nm
- 2.0 TDCi 130 PS (96 kW)/385 Nm

*Ford Emergency Assistance is an innovative SYNC feature that uses a Bluetooth®-paired and connected mobile phone to help vehicle occupants initiate a direct call to the local Communications Centre, following a vehicle crash event involving an airbag deployment or fuel pump shut off. The feature operates in more than 40 European countries and regions.

*Note: A rear-facing child seat should never be placed in the front passenger seat when the Ford vehicle is equipped with an operational front passenger's airbag. The safest place for children is properly restrained on the second-row seats.

Note The Bluetooth® word mark and logos are owned by the Bluetooth SIG, Inc. and any use of such marks by Ford Motor Company Limited and its associated companies is under licence. Other trademarks and trade names are those of their respective owners.





Model shown is a Tourneo Custom Titanium L1 in Tectonic Silver exclusive body colour. (Option)

Titanium

Key exterior features, in addition to Zetec

- 16" 5 spoke alloy wheels with locking wheel nuts
- Body colour bodyside mouldings
- Body colour rear bumper
- Body colour front, side and liftgate door handles
- Bodycolour door mirror housings
- Perimeter alarm

Key interior features, in addition to Zetec

- Radio/CD system with DAB
- Rear compartment air conditioning
- Integrated sunblinds on second row windows, plus third row windows on L2 models

Option pack available:

- Premium Visibility Pack with Adaptive Cruise Control
- Includes: Traffic Sign Recognition, Pre-Collision Assist with Auto Braking, Lane Keeping Alert with Driver Alert, Rear-View Camera with Trailer Hitch Assist and Auto High Beam Headlights.

Engines

- 2.0 TDCi 130 PS (96 kW)/385 Nm
- 2.0 TDCi 170 PS (125 kW)/405 Nm





We chose Tectonic Silver. Which one will you choose?

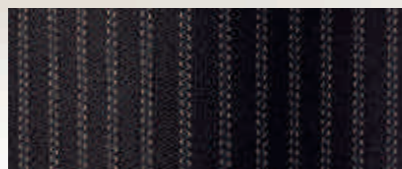
The new Tourneo Custom owes its beautiful and durable exterior to a thorough multi-stage painting process. From the wax-injected steel body sections to the hard-wearing top coat, new materials and application processes ensure it will retain its good looks for many years to come.

Note The images used are to illustrate body colours only and may not reflect the vehicle described. Colours and trims reproduced within this brochure may vary from the actual colours, due to the limitations of the printing processes used.

*Premium body colours, exclusive body colours and leather trim are options, at extra cost.

Allergy-friendly interior

Ford Tourneo Custom's interior uses materials that minimise the risk of an allergic reaction. Models fitted with air conditioning also have a high-performance pollen filter to prevent dust and pollen entering the passenger compartment.



Zetec

Insert: Lane in Soft Charcoal
Bolster: Max in Charcoal Black

Titanium

Insert: Ecko in Medium Stone
Bolster: Max in Charcoal Black

Titanium

Insert & bolster: Torino leather in Medium Stone*



Frozen White
Standard body colour



Race Red
Standard body colour



Blazer Blue
Standard body colour



Tectonic Silver
Exclusive body colour*



Moondust Silver
Premium body colour*



Magnetic
Premium body colour*



Stratosphere
Premium body colour*



Deep Impact Blue
Premium body colour*



Shadow Black
Premium body colour*

Mechanical features

	Zetec	Titanium
Technology		
2.0 TDCi (105 PS (77 kW))	●	-
2.0 TDCi (130 PS (96 kW))	●	●
2.0 TDCi (170 PS (125 kW))	-	●
Auto-Start-Stop (standard also if specified with automatic transmission)	●	●
Coated Diesel Particulate Filter (cDPF)	●	●
Acceleration control	○	○
Ford Eco Mode (driver information system)	●	●
Brakes		
Dual-circuit, with self-adjusting servo-assistance and ABS. Front & rear discs	●	●
Fuel tank		
80 litres	●	●
Ford Easy-Fuel capless refuelling system with misfuel inhibit	●	●
Urea aftertreatment system – 21 litre	●	●
Steering		
Power-assisted steering	●	●
Steering column – Rake- and reach-adjustable	●	●
Suspension		
Front, independent MacPherson struts, coil springs, stabiliser bar and gas-pressurised shock absorbers. Rear, leaf springs and gas-pressurised shock absorbers	●	●
Rear air suspension (available from Q4 2016)	○	○
Engine Governors		
Speed Limiter – 56 mph	○	○
Speed Limiter – 62 mph	○	○
Speed Limiter – 70 mph	○	○
Standard Duty Battery - Single AGM 80Ah, 800CCA	●	●
Heavy Duty Battery - Twin AGM 80Ah, 800CCA	○	○

● = Standard, ○ = Option, at extra cost.



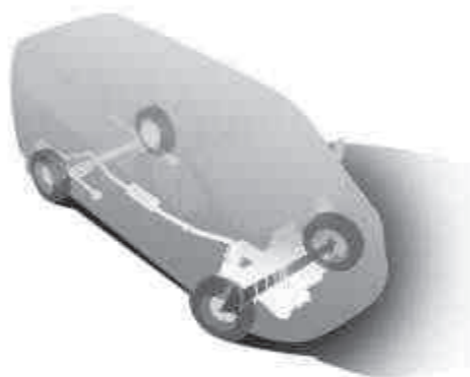
Even better ride and handling

Ford Tourneo Custom's driving qualities have been fine-tuned with new stiffer mounting bushes and brackets.

More rewarding to drive

Tourneo Custom's Torque Vectoring Control[®] is designed to improve traction, roadholding and agility when cornering by continuously optimising the engine torque distributed to each front wheel to match the amount of grip each has available. The result is a more rewarding driving experience. (Standard)

[®]Uses sensors.



Exterior features

	Zetec	Titanium
Design features		
Door mirrors – Blind Spot Eliminator and integrated side indicator	●	●
Door mirrors – Power-foldable, electrically-operated and heated	●	●
Door mirrors – Body colour caps	-	●
Bodyside mouldings – Body colour	-	●
Bumper – Body colour front bumper	●	●
Bumper – Body colour rear bumper	-	●
Door handles – Body colour	-	●
Liftgate handle – Body colour	-	●
Partial dress up kit – Front skid plate (self coloured bright silver surface) and front and rear wheel arch extensions (self coloured grey, grained surface)	○	○
Rear privacy glass (37% luminous transmittance)	●	●
Light tinted glass (72% luminous transmittance) in lieu of rear privacy glass	○	○
Rear window – Heated	●	●
Roof rack – Integrated and stowable	○	○
Mudflaps – Front	●	●
Mudflaps – Rear	○	○
Tow bar with Trailer Sway Control with 13-pin electrics (tachograph may be required)	○	○
Trailer tow electrics (includes 13-pin electrics but no tow bar, to enable fitment of bespoke aftermarket tow bars)	○	○

● = Standard, ○ = Option, at extra cost.

Impressive turning circle

11.6 m turning circle*

With its impressive 11.6 m kerb-to-kerb turning circle, the Ford Tourneo Custom L1 is the ideal choice for demanding city driving.

*L1 version with 16" wheels.

11.6 m
turning circle*



Exterior features

	Zetec	Titanium
Convenience features		
Headlights – Projector style halogen reflector lights with chrome background, and static cornering lights	●	●
Headlight courtesy delay, 30 seconds duration	●	●
Headlights – Day Time Running Lights	●	●
Headlights – Automatic on/off	●	●
Fog lights- Front	●	●
Doors – Driver's and passenger's side, sliding glazed doors and steps	●	●
Doors – Glazed rear liftgate with wash/wipe	●	●
Quickclear heated windscreen	●	●
Parking distance sensor – Front and rear	●	●
Side step – Door length (covering sliding door opening)	●	●
Side windows – Second row, flip open	●	●
Side windows – 2nd Second row, fixed	○	○
Side Windows – Third row, fixed	●	●
Wipers – Rear with auto reverse wipe and electrically-operated wash	●	●
Wipers – Automatic with rain sensor - includes automatic headlights	●	●

Never misfuel again

Ford Easy-Fuel capless refuelling

A unique safeguard ensures nobody can accidentally fill up with the wrong fuel. Plus there are no dirty fuel caps to touch either. (Standard)

Driving with AdBlue®

To operate correctly, the AdBlue® tank of your Ford Tourneo Custom Euro6 diesel engine must be filled with AdBlue® fluid. System warnings illuminate when the fluid level becomes too low. For more information, please discuss with your Ford Transit Centre.

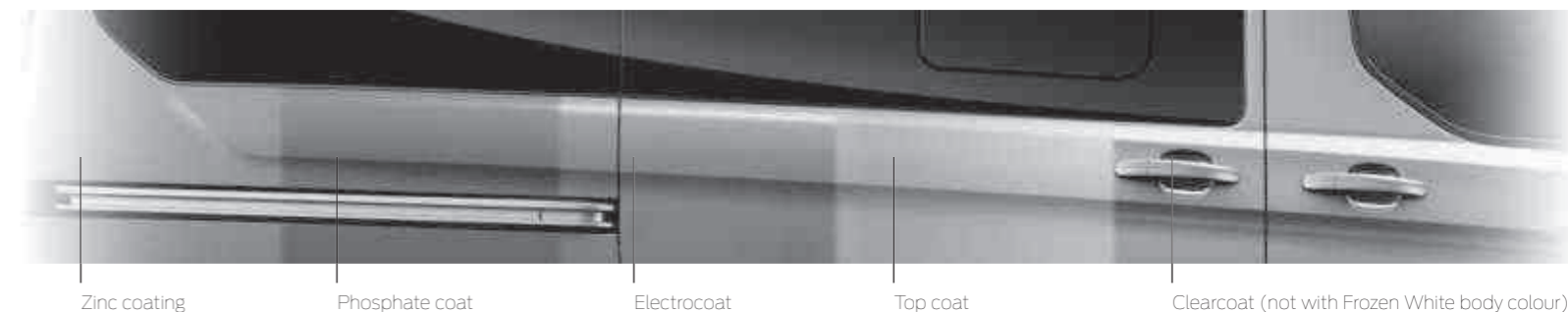
Exterior features

	Zetec	Titanium
Wheels		
Steel – 16"x6½" (Fitted with 215/65 R16 BSW tyres)*	●	-
Alloy – 16"x6½", 5x2-spoke (Fitted with 215/65 R16 BSW tyres)* (includes locking wheel nuts)	○	●
Alloy – 17"x7", 5-spoke (Fitted with 235/55 R17 BSW tyres)* (includes locking wheel nuts) (Available Q4 2016)	○	○
Wheel covers – Full	●	-
Spare – Full size with tool kit	●	●
Option Pack		
Premium Visibility Pack – Lane Keeping Alert (including Auto High Beam, Driver Alert and Rear-view camera,)	○	○

● = Standard, ○ = Option, at extra cost.
*The wheel you choose will be fitted with the tyre size noted, but no choice of tyre brand is available.

12-year perforation warranty

The new Tourneo Custom owes its durable exterior to a thorough multi-stage painting process. From the wax-injected steel body sections to the hard-wearing top coat, new materials and application processes ensure it will retain its good looks for many years to come.



Safety

	Zetec	Titanium
Safety and driver assistance		
Anti-lock braking system (ABS) with electronic brake-force distribution (EBD) ¹⁾	●	●
Electronic Stability Control (ESC) ¹⁾	●	●
Hill Start Assist (HSA) ²⁾	●	●
Load Adaptive Control (LAC) ¹⁾	●	●
Emergency Brake Assist (EBA) ¹⁾	●	●
Emergency Brake Warning ²⁾	●	●
Roll Stability Control (RSC) ¹⁾	●	●
Trailer Sway Control (TSC) activated with Ford tow attachments ¹⁾	○	○
Side Wind Stabilisation	●	●
Airbag – Driver's ¹⁾	●	●
Airbag – Front passenger's (includes passenger's airbag deactivation switch) ^{*1)}	●	●
Airbag – Front side and curtain airbags ¹⁾	●	●
Lane-Keeping Alert ²⁾ (includes Driver Alert ²⁾ and Auto High Beam ¹⁾ , high series instrument cluster, adaptive cruise control, leather-trimmed steering wheel, Quickclear heated windscreen and SYNC audio system)	○	○
Cruise control (includes leather-trimmed steering wheel and Adjustable Speed Limiter)	●	●
Adaptive Cruise Control (includes Pre-Collision Assist, Forward Alert and Traffic Sign Recognition (Stage VI engine variants only when specified with Lane-Keeping Alert))	○	○
Seat belts – 3-point diagonal inertia reel (all seats) ¹⁾	●	●
ISOFIX – child seat 3 attachments – Centre (second & third row) and drivers side (2nd row) seats ¹⁾	●	●
Tyre Pressure Monitoring System (TPMS) ¹⁾	●	●

First-in-class 5-star Euro NCAP rating

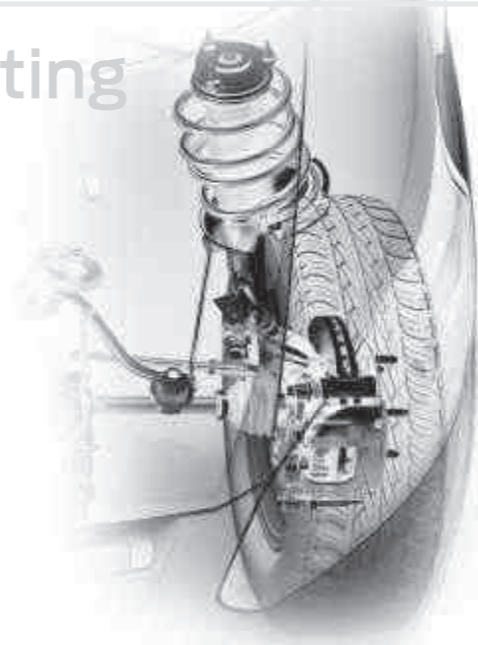
Safety without compromise

Ford Tourneo Custom is officially one of the safest vehicles on the road. It was awarded the maximum 5-star overall safety rating from Euro NCAP. In addition, the Tourneo Custom received two Euro NCAP Advanced Rewards in recognition of its Lane-Keeping Alert technology and SYNC Emergency Assistance system.



Stop safer

Tourneo Custom makes driver and passenger protection its top priority. Standard safety features include ABS with Emergency Brake Assist (EBA) to help reduce emergency stopping distances. Larger brake pads last longer and are more resistant to brake fade, while wear sensors indicate when pads are due for replacement.



Security

	Zetec	Titanium
Security		
Alarm – Perimeter	○	●
Immobiliser – Passive Anti-Theft System (PATS) (Insurance-approved Category 2 immobiliser)	●	●
Locks – Power central locking (no deadlocks)	○	○
Locks – Power door deadlocks, shielded with strengthened mouldings	●	●
Locks – Remote control central locking with 2 key fobs	●	●
Locks – Configurable Locking Pack 2, 2-stage unlocking	●	●
Locks – Auto relocking, doors relock after 45 seconds if no door is opened	●	●
Locks – Audio mislock feedback, audible signal if a door is ajar when locking activated	●	●
Locks – Auto locking on drive-away, doors automatically lock at 5 mph, with crash unlocking disabled	●	●
Auto-locking on drive away, doors automatically lock at 5 mph, with crash unlocking enabled	○	○
Locks – Key-operated bonnet release	●	●
Vehicle Identification Number – Visible	●	●

● = Standard, ○ = Option, at extra cost. ¹⁾Safety feature. ²⁾Driver assistance feature.

*For details of the configurations available, please consult your Ford Dealer. Please note: Configurable locking must be defined at the time of order, it cannot be ordered as a Dealer-fitted option or accessory.

***Note: A rear-facing child seat should never be placed in the front passenger seat when the Ford vehicle is equipped with an operational front passenger's airbag.**

4,500 virtual and real-world crash tests

Smarter engineering for greater peace of mind

With 4,500 crash tests to its name – in both the real and virtual worlds – the all-new Tourneo Custom is designed to keep its occupants as safe as possible. Outstanding protection begins in the stiff body structure, with increased levels of high-strength and ultra-high-strength steel. And is complemented by a range of safety innovations, including a full array of airbags, plus advanced chassis and braking technology.

Side curtain airbags²⁾

Designed to help protect the driver's and passengers' heads from injury. (Standard)



Ford SYNC with AppLink*

The next generation of in-car connectivity. Ford SYNC lets you operate most popular Bluetooth®-enabled phones and USB drives and even control apps on your smartphone with remarkably simple voice commands. (Standard)

Key features include

- Select music or make calls hands-free using simple voice commands
- Reads out incoming text messages from your connected phone
- Traffic alerts
- Emergency Assistance* feature designed to assist the occupants to call the emergency services in the event of an accident, in over 40 European countries and regions
- SYNC AppLink* lets you control apps on your smartphone using voice commands (compatible mobile phone required)

Audible SMS

Have your incoming text messages read to you from your connected phone, including commonly-used abbreviations and emoticons, and you can even respond with a choice of 15 preset text messages. Compatible mobile phone required. (Part of Ford SYNC)



Voice-controlled system

Select music or make calls with Ford SYNC – all hands-free using simple voice commands.



| SYNC

Bluetooth® Audio Streaming

Stream your music collection from your mobile phone or other compatible device to the vehicle's audio system. (Part of Ford SYNC audio)

Emergency Assistance*

Innovative SYNC feature that uses a Bluetooth®-paired and connected mobile phone to help vehicle occupants initiate a direct call to the local Communications Centre (in more than 40 European countries and regions), following a vehicle crash event involving an airbag deployment or fuel pump shut off. (Part of Ford SYNC)

EURO NCAP advanced
2012 Reward for Ford SYNC Emergency Assistance

Hands-free phone control

Part of Ford SYNC.

SYNC AppLink*

Control your favourite mobile apps from your supported smartphone using voice commands and buttons on the steering wheel. (Compatible mobile phone required)

Navigation

3D map stored on SD card can also show points of interest on a 5" TFT colour screen. Also includes traffic announcements. (Option)

*Compatible mobile phone required. You can browse a list of AppLink-compatible apps from your regional Ford website, or via the Ford App Catalog available in iOS and Android stores. SYNC AppLink and Emergency Assistance are not supported by all European languages.

Note The Bluetooth® word mark and logos are owned by the Bluetooth SIG, Inc. and any use of such marks by Ford Motor Company Limited and its associated companies is under licence. Other trademarks and trade names are those of their respective owners.



Interior features

	Zetec	Titanium
Design features		
Floor covering – Carpet	●	●
Steering wheel – 4-spoke, leather-trimmed	●	●
Gearshift knob – Leather-trimmed	●	●
Interior lighting		
Courtesy lights – Header-mounted, front with map reading lights and theatre dimming	●	●
Courtesy lights – Footwell illumination (side load door only)	●	●
Courtesy lights – Rear seat courtesy lights with theatre dimming	●	●
Loadspace compartment lights	●	●
Interior lighting/battery saver – 30 minutes	●	●
Audio and communications systems		
Radio/CD, SYNC (includes Emergency Assistance*) with Bluetooth®, Voice Control System, AppLink, audible text messaging and privacy mode, 4" TFT display, extended integrated control panel, USB connectivity port with iPod® functionality, remote audio controls, four front speakers (two woofers and two tweeters) ICE Pack 8	●	–
Radio/CD with DAB, SYNC (includes Emergency Assistance*) with Bluetooth®, Voice Control System, AppLink, audible text messaging and privacy mode, 4" TFT display, extended integrated control panel, USB connectivity port with iPod® functionality, remote audio controls, four front speakers (two woofers and two tweeters) ICE Pack 9	○	●
Radio/CD/SD-navigation system with DAB, SYNC (includes Emergency Assistance*) with Bluetooth®, Voice Control System, AppLink, audible text messaging and privacy mode, 5" TFT display, extended integrated control panel, USB connectivity port with iPod® functionality, remote audio controls, four front speakers (two woofers and two tweeters) ICE Pack 11	○	○
Radio/CD/SD-navigation system with DAB and rear-view camera, SYNC (includes Emergency Assistance*) with Bluetooth®, Voice Control System, AppLink, audible text messaging and privacy mode, 5" TFT display, extended integrated control panel, USB connectivity port with iPod® functionality, remote audio controls, four front speakers (two woofers and two tweeters) (includes Trailer Hitch Assist) (camera image appears in 5" TFT display) ICE Pack 40	○	○
Instruments and controls		
Trip computer distance to empty, instant and average fuel consumption, average speed, outside temperature	●	●
Water in fuel filter with sensor	●	●
Alternator – Extra heavy duty (250 Amp)	○	○
Tachograph – Digital, electronic, 24-hour	○	○
Cruise control (includes Adjustable Speed Limiting Device)	●	●
Shift Indicator light	●	●

Recharge on the go

Storage compartment with power point, and USB and AUX MP3 sockets above instrument cluster

Cleverly concealed storage compartment for safe stowage of items. (Storage and power point is standard; USB and AUX sockets specified with audio system)

Interior features

	Zetec	Titanium
Comfort and convenience		
Air conditioning – Rear (includes front air conditioning)	○	●
Heater – Recirculation	●	●
Heater – Rear compartment, water	○	–
Assist handle – Located on B-pillar	●	●
Bottle holder – Twin, 2-litre bottle capacity, fascia-mounted	●	●
Cup holder – Twin, fascia-mounted, in base	●	●
Glovebox – With lockable lid	●	●
Heater – PTC (Positive Temperature Coefficient)	●	●
Heater – Rear compartment (as part of air conditioning, on Titanium) Rear seat climate control	○	●
Power point socket – 2 x 12 V (located on instrument panel and in stowage bin)	●	●
Power point socket – 12 V (located in rear)	●	●

● = Standard, ○ = Option, at extra cost. □ = Part of a pack

*Ford Emergency Assistance is an innovative SYNC feature that uses a Bluetooth®-paired and connected mobile phone to help vehicle occupants initiate a direct call to the local Communications Centre, following a vehicle crash event involving an airbag deployment or fuel pump shut off.

The Bluetooth® trademark and logos are owned by the Bluetooth SIG, Inc. and any use of such marks by Ford Motor Company is under licence. Other trademarks and trade names are those of their respective owners. *Ford Emergency Assistance operates in over 30 European countries. This feature is designed to work when paired with a compatible connected mobile phone that is with you when an airbag is deployed or a sensor registers that a crash deactivates the fuel pump. See your local Ford website for latest information.



Power-operated and heated driver's seat

With 10 ways to adjust the heated driver's seat, you can find your most comfortable driving position with ease. (Option on Titanium) (NB image shows LHD seat, RHD has armrest on left side)

Rear-view camera with Trailer Hitch Assist

Select reverse and the image from the rear-view camera displays automatically in the central colour Multi-Functional Display screen. Marker lines overlaid on the camera image indicate where the vehicle is heading. (Option)



Interior features

	Zetec	Titanium
Power point – 230 V (150 Watt) power converter	○	○
Rear-view camera includes Trailer Hitch Assist (image in central TFT display)	○/□	○/□
Smokers' Pack – Cigar lighter and ash cups	○	○
Storage – Front door map pockets	●	●
Storage – Driver's side, storage compartment on fascia top with lift-up lid	●	●
Storage – Centre stack-mounted car park/toll ticket holder	●	●
Sunblinds – Second and third row (second row only, on L1)	○	●
Windows – Front, electrically-operated front with one-touch lowering on driver's side	●	●
Load compartment		
Load compartment – DIN 75410 compliant tie-down loops (2 in L1, 4 in L2)	●	●
Seats		
Driver's seat – 10-way heated (fore/aft; recline; height; tilt; and lumbar) with armrest	●	●
Driver's seat – Power 10-way heated (fore/aft, recline, height, tilt, and lumbar) with armrest	–	□
Front passenger's seat – Single, 8-way heated (fore/aft; recline; height; tilt) with armrest	●	–
Front passenger's seat – Single, 10-way heated (fore/aft; recline; height; tilt and lumbar) with armrest	–	●
Front passenger's seat – Dual, fixed and heated (outer seat only) with tray table	○	○
Rear seats – Second row, triple wide seats (2+1), foldable and detachable	●	●
Rear seats – Third row, triple wide seats (2+1), foldable and detachable	●	●
Rear seat recline and second row armrests	●	●
Shuttle Bus Seat Pack (2+2+2+3) - Four rows of Direct Access Seats. Rear seats are easily reached from the kerb-side sliding side door. Available in cloth or leather (leather on Titanium only) (only available with single front passenger seat)	○	○
Executive Seat Pack 1 (2+2+2) – Flex floor, 4-way manual driver's and passenger's seat adjustment, no seat back trays, driver's and passenger's inboard armrests, driver's manual lumbar adjust (only available with single front passenger seat)	○	–
Executive Seat Pack 2 (2+2) – Flex floor and table, full leather seat trim, 10-way power driver's seat adjustment and 8-way manual passenger's seat adjustment, driver's and passenger's inboard armrests, driver's and passenger's manual lumbar adjust (only available with single front passenger seat)	–	○

● = Standard, ○ = Option, at extra cost. □ = Part of a pack

Air flow rate increased by 140%

Aircraft-style ventilation

Rear seat occupants each have their own individual air vent. Two foot level outlets are also provided for each row of seats. (Standard)

High-performance heating and ventilation system

Increased air flow means faster demisting and a more comfortable climate for passengers.

Air conditioning

A separate air conditioning system is available for the rear passenger compartment with its own rotary controls. (Standard on Titanium, option on Style and Zetec)



Weights, loads and fuel

	Maximum Power PS (kW)	Torque Nm	Maximum Speed (mph)	Gross payload ⁶	Gross vehicle mass (kg)	Kerb mass (kg)*	Front axle plated mass (kg)	Front axle kerb mass (kg)	Rear axle plated mass (kg)	Rear axle kerb mass (kg)	Axle ratio	Max. GTM (kg)	Max. trailer weight braked (un-braked) (kg)	CO ₂ emissions (g/km) ⁹⁰	Fuel consumption in mpg (L/100 km) ⁹⁰⁰⁰		
														Urban	Extra Urban	Combined	
310 L1 Tourneo Custom (M1)																	
2.0 TDCi (105 PS (77 kW)) Zetec	105 (77)	360	99	969	3140	2171	1625	1248	1640	923	4.19	4940	1950(750)	159	40.4 / 7.0	50.4 / 5.6	46.3 / 6.1
2.0 TDCi (130 PS (96 kW)) Zetec	130 (96)	385	99	969	3140	2171	1625	1248	1640	923	4.19	5140	2150(750)	159	40.4 / 7.0	50.4 / 5.6	46.3 / 6.1
2.0 TDCi (170 PS (125 kW)) Titanium	170 (125)	405	99	937	3140	2203	1625	1266	1640	937	4.19	5140	2100(750)	163	39.8 / 7.1	47.9 / 5.9	44.8 / 6.3
310 L2 Tourneo Custom (M1)																	
2.0 TDCi (105 PS (77 kW)) Zetec	105 (77)	360	99	880	3140	2260	1725	1328	1640	932	4.19	4940	1850(750)	162	39.8 / 7.1	48.7 / 5.8	44.8 / 6.3
2.0 TDCi (130 PS (96 kW)) Zetec	130 (96)	385	99	880	3140	2260	1725	1328	1640	932	4.19	5140	2050(750)	162	39.8 / 7.1	48.7 / 5.8	44.8 / 6.3
2.0 TDCi (170 PS (125 kW)) Titanium	170 (125)	405	99	850	3140	2290	1725	1345	1640	945	4.19	5140	2000(750)	166	39.2 / 7.2	47.1 / 6.0	44.1 / 6.4

L1 = Short wheelbase. **L2** = Long wheelbase. Note: All engines are Stage VI unless stated and include Diesel Particulate Filter (cDPPF). All models are 6-speed manual transmission. ⁸⁰The illustrated axle ratio shown is one available dependent upon model, GVM and engine combination. **GVM** = Gross vehicle mass. The total permissible all-up weight of a rigid vehicle – i.e. with body, payload, ancillaries, fuel, oil, water, driver and crew. ***Kerb mass** = The weight of the complete vehicle and all equipment including 90% fuel and water, but without the payload, driver or any crew. **GTM** = Gross train mass. The total permissible all-up weight of a rigid vehicle (see GVM) together with its trailer and load. ⁶Gross Payload = Gross vehicle mass, less kerb mass. All kerb masses quoted in this brochure are subject to manufacturing tolerances and are for Trend models with minimum equipment. Titanium models will have greater kerb masses and, therefore, lower payloads due to the increased amount of standard equipment. Any additional options specified on the vehicle will reduce the payload accordingly. ⁹⁰The illustrated axle ratio shown is the one available dependent upon model, GVM payload and engine combination. ⁹⁰⁰⁰The declared Fuel/Energy Consumptions, CO₂ emissions are measured according to the technical requirements and specifications of the European Regulations (EC) 715/2007 and (EC) 692/2008 as last amended. Fuel consumption and CO₂ emissions are specified for a vehicle variant and not for a single vehicle. The applied standard test procedure enables comparison between different vehicle types and different manufacturers and assumes a driver 75kg, 90% of fuel and 25kg. In addition to the fuel efficiency of a vehicle, driving behaviour, the specification and options fitted as well as other non-technical factors play a role in determining a car's fuel/energy consumption, CO₂ emissions. Consult your Dealer for more information.

Ford EConetic Technology

- All-new Ford Ecoblue 2.0 TDCi advanced diesel engines – provide exceptional fuel economy and low CO₂ emissions
- Ford Auto-Start-Stop system
- Ford Smart Regenerative Charging
- Ford Eco Mode driver information system – shows you when you're achieving optimum fuel efficiency
- Gear Shift Indicator – to aid economical driving
- Acceleration Control - unique engine calibration helps reduce fuel consumption when vehicle is driven empty(option)
- Ford Battery Management System – improves battery life, fuel consumption and ensures ready-to-go reliability



Vehicle options and accessories

	SVO Code	Feature Code	Zetec	Titanium
Electrical				
Engine RPM Speed Control (1300-3000)	A003	DCNAB	<input type="radio"/>	<input type="radio"/>
Auxiliary fuse panel	A526	JZGAB	<input type="radio"/>	<input type="radio"/>
Twin AGM Cyclic Durable Batteries (2 x 80Ah, 800CCA)	A737	HTCAC	<input type="radio"/>	<input type="radio"/>
Beacon Preparation Pack – Switch and wiring front and rear (includes Auxiliary fuse panel A526, and Mini Overhead Console – 1DIN)*	A606	JZFAC	<input type="radio"/>	<input type="radio"/>
Trailer tow electrics – Trailer tow electrics (connector and wiring) without the tow bar	A055	CIDAD	<input type="radio"/>	<input type="radio"/>
The Ford Programmable Battery Guard – Patented 10-mode programmable battery guard system capable of protecting Ford and 3rd party battery	A540	JZAAC	<input type="radio"/>	<input type="radio"/>
Paint				
Special paint, 100 solid colours available, consult your Transit Centre for details*	Various	Various	<input type="radio"/>	-

= Option, at extra cost. *SVO paint suffix must be entered at time of ordering. SVO paint pulls black (self-colour) bumpers, bodyside mouldings, mirror housing, and door handles. SVO N/A on Titanium. *Not to be ordered with tachograph, as utilises the same 1 DIN console.

Added flexibility

ClimAir® wind deflector*

Reduces wind turbulence and noise, allowing you a more enjoyable drive with the windows down, even during light rain, and whilst on the move. Available front only. (Accessory)

Brink® detachable tow bar

For extra transport and stowage capability, the tow bar can tow up to 2,200 kg* depending on engine and series. The tow bar can be detached if not in use. Also available as a fixed tow bar. (Detachable tow bar accessory only)

Thule® roof bike carrier

High-quality, easy-to-install roof bike carrier from leading manufacturer Thule®. (Accessory)

Thule® roof box

Designed to carry a wide variety of loads and protect them from weather and theft. Most models come with dual-opening for easy access. (Accessory, available in various sizes)

All-weather floor mats

All-weather floor mats are tailor-made to fit your Ford perfectly and protect against dirt and damp. Securely fixed directly onto the vehicle's floor. (Accessory)



*Item covered by third party supplier's warranty, please see back cover for details.

Towing capacity depends on engine and vehicle series, please refer to vehicle weight and load specifications.

For more accessories for your Ford Tourneo Custom visit www.ford-accessories.co.uk

For a range of Ford branded items – from clothing to lifestyle products and model cars – visit www.fordlifestylecollection.com

Bodystyle: Series:

Engine:

Transmission:

Colour:

Trim:

Wheels:

Audio:

Options:

Option Packs:

Accessories:

Finance:

Choose

Specify your new car right down to the wheels, audio, options and accessories then visit your Ford dealer.

You can specify your new car online using the Ford Configurator. It lets you instantly see what your car will look like – inside and out – from multiple angles. And a tally of your choices and their prices helps you keep to your budget. Visit www.ford.co.uk/ConfigureyourCar

Finance

When it comes to financing your car, our size and expertise means we're well placed to provide you with a wide range of finance products.

Ford Credit provides a range of finance products for your car whether you are a private or business user.

Ford Lease specialises in contract hire and leasing and provides an alternative range of finance plans which can be tailored to suit your business. Business users only.

For more information about our finance products visit www.ford.co.uk

Drive

When you drive away in your new car, we're with you all the way. Ford has the largest authorised service network in the UK to help you keep your car in the best condition.

And should your new Ford ever require accident repair, a Ford Accident Repair Centre is the best place to get your car back to its pre-accident condition and on the road as quickly as possible.

Contact

Ford Credit Customer Services 0345 712 5490

Ford Lease Customer Services 0344 600 1405

Calls to 0344 and 0345 numbers are charged at the same rate as standard 01 or 02 geographic numbers, even when calling from a mobile.

To configure your Ford online visit

www.ford.co.uk/ConfigureyourCar

To look at finance for your Ford visit www.fordcredit.co.uk/BuyingAndProtectingYourFord

Business users visit www.ford.co.uk/FordFleet



Dimensions

	8/9-seat Tourneo	
A Overall length	4972	5339
B Overall width (with/without mirrors)	2272/1986	2272/1986
C Overall height*	1927-1984	1927-1977
G Side door entry width	930	930
K Loadspace between wheel arches	1350	1350
Luggage space width	1752	1752
Luggage space floor to roof	1304	1304
Luggage space length (at base of third row seats)	665	1032
Luggage capacity (litres)		
Luggage capacity (behind third row of seats)	1180	1930
Turning circle (m)		
Kerb to kerb (16" Wheels)	11.6	12.8
Wall to wall (16" Wheels)	12.2	13.4

L1 = Short Wheelbase. **L2** = Long Wheelbase. All dimensions (shown in mm) are subject to manufacturing tolerances and refer to minimum specification models and do not include additional equipment. These illustrations are for guidance only. *Height dimensions show the range from minimum to maximum of a fully laden, lowest payload vehicle to unladen highest payload vehicle.

Illustrations, descriptions and specifications. This catalogue was correct at the time of going to print. However, Ford policy is one of continuous product development. The right is reserved to change specifications, colours and prices of the models and items illustrated and described in this publication at any time. For the latest details always consult your Ford Dealer. **Optional equipment.** Throughout this publication, wherever a feature is described as being an 'Option' or 'Option Fitment/Pack' etc, you should assume that it will be at extra cost to the base vehicle, unless specifically stated to the contrary. All models and colour combinations are subject to availability. **Note.** Some images portrayed are of a pre-production model and/or are computer generated, therefore, the design/features on the final version of the vehicle may differ in various respects. In addition, some of the features shown on the vehicles may be optional. **Note.** This brochure contains both original Ford accessories as well as a range of products from our suppliers. **+**The identified accessories are carefully selected third party supplier branded accessories which do not come with a Ford warranty but are covered by the third party supplier's own warranty, the details of which can be obtained from your Ford Dealer. **Note.** The Bluetooth® word mark and logos are owned by the Bluetooth SIG, Inc. and any use of such marks by Ford Motor Company is under licence. The iPod word mark and logos are the property of Apple Inc. Other trademarks and trade names are those of their respective owners. **Note.** Some driver assistance features and safety features described in this brochure are designed to function using sensors, whose performance may be affected under certain weather or environmental conditions.

The Government fuel figures do not express or imply any guarantee of the fuel consumption of any particular vehicle. The vehicles themselves have not been tested and there are inevitably differences between individual vehicles of the same model. In addition, a vehicle may incorporate particular modifications. Furthermore, the driver's style and road and traffic conditions, as well as the extent to which the vehicle has been driven and the standard of maintenance, will affect its fuel consumption. **Insurance groups** are only as recommended by the Association of British Insurers. You should always consult your insurance adviser for confirmation.



Ford One Call

In the unlikely event that your Ford Dealer can't help you or if you need to speak to us directly, call 0203 564 4444

Ford Rental - local service nationwide

Car and Van rental from our latest model range. Contact your local Ford Dealer for more information

Ford Motability

Call our Ford Motability team on 0345 6040019

Finance

Ford Credit Customer Services 0345 712 5490
Ford Lease Customer Services 0344 600 1405
Calls to 0344 and 0345 numbers are charged at the same rate as a standard 01 or 02 geographic number, even when calling from a mobile.

Published by Ford Motor Company Limited, Brentwood, Essex, England. Registered in England No. 235446.

FA 1574/5
BJN 204574. FoE H56E.
PN 677504/0616/GBR en

February 2016.

© Ford Motor Company Limited.



www.ford.co.uk



Go Further