



**i40**





# NEW THINKING. NEW POSSIBILITIES.

---

Our philosophy is to do things differently and embrace every challenge. Whatever you're looking for on the open road, we've made it possible by refining every area. We're the only car maker to control the entire manufacturing process, which we're especially proud of since we've made over 50 million cars. We're also the first car manufacturer to produce zero emission fuel-cell powered vehicles, and we've achieved over 90% recyclability of our cars. Every day we aim to improve, which is why we're the world's fastest-growing manufacturer and received the industry's Motor Trader's Carmaker of the Year award for the third time in just six years. Thanks to your support, the possibilities are endless.



i40 exudes quality. Both the Saloon and Tourer radiate elegant style, refined luxury and a host of cutting-edge technologies. Relaxing, spacious and enjoyable to drive, it belongs to a class of its own.





# Striking style makes the ultimate first impression.

Bold styling and distinctive curves create an aura of quiet confidence which runs through i40's design. It carries itself with elegance and purpose - a car you'll always be proud to drive.

Seamless style combines subtle curves and sharp creases together, giving i40 a sense of dynamism. Its redesigned signature hexagonal grille is a striking centrepiece, which is enhanced by a variety of complementary features. LED daytime running lights add to its eye-catching appearance, while stylish new alloy wheel designs complete its sophisticated look. With stand-out features and a real presence, it's easy to imagine yourself behind the wheel.

# The ultimate driving companion.

Designed with safety in mind, Apple CarPlay™ and Android™ Auto offer smart, safe ways to use your phone whilst driving. Simply connect your device and see your phone's interface appear onto the i40's built-in display screen.



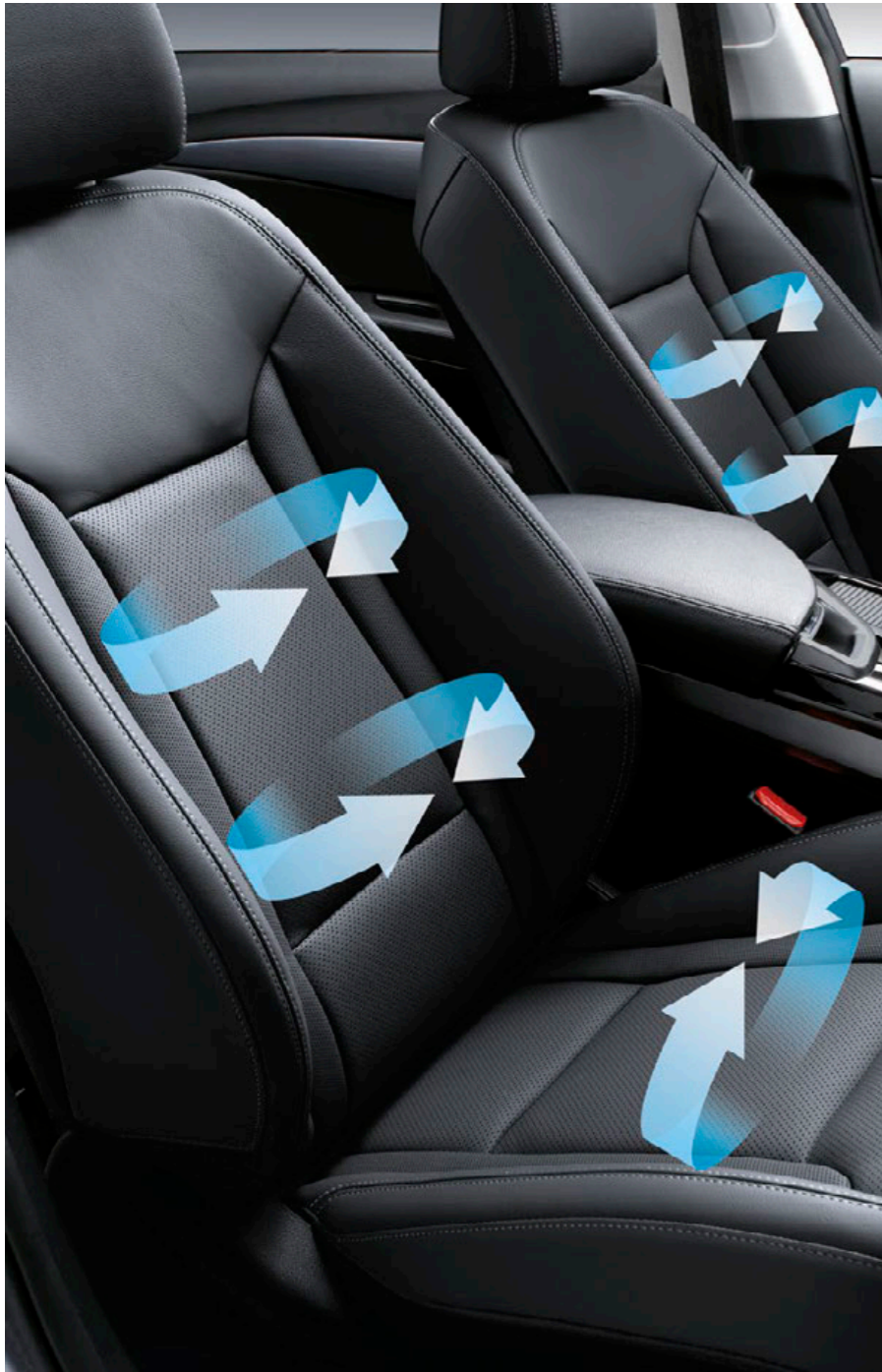
Enjoy maximum connectivity while staying focused on the road ahead. Both Apple CarPlay™ and Android™ Auto let you do all the things you want to do with your phone and control them from your car's display instead. You can get directions,

make calls, receive and send messages and control your music, all from your car's intuitive interface and integrated steering wheel controls. It's one less distraction, and another way to stay connected to your friends and family.



Car shown i40 Saloon Premium.

Apple CarPlay™ is a trademark of Apple Inc. Android™ is a trademark of Google Inc.



## Enter true business class luxury.

Surround yourself with luxury from the moment you step inside. With fine fabrics, premium materials and a driver-oriented position, you'll feel comfortable and composed when you reach your destination.

Elegant and luxurious with everything at your fingertips, i40's interior is a calming oasis away from the noise outside. Its premium materials result in a peaceful driving experience. High-quality upholstery and soft finish surfaces are pleasing on the eye and easy to the touch, while the ergonomic layout places everything exactly where you need it. Leather seat facings on SE Nav Business and Premium models add an extra touch of refinement to your surroundings. Find the perfect temperature thanks to air conditioning as standard, while SE Nav and above features dual zone climate control. SE Nav and above also arrives with cruise control with speed limiter for a relaxing drive, plus a 10-way electric adjustable driver's seat to help you find your ideal driving position. Stay warm during those winter months thanks to a heated steering wheel and heated front seats, and stay cool and fresh during the summer with ventilated front seats on SE Nav Business and Premium. On the Premium model, you'll even get heated rear seats for your grateful passengers. i40's well-appointed interior and quality finish lives up to all your expectations.

# Its versatile interior leaves no room for improvement.

i40 provides accommodating space, perfect for long commutes or weekend trips away with the family. It's a luxurious sanctuary from the world outside.

Travel in total comfort on every journey thanks to generous head, shoulder and leg room for 5 adults. If you've got luggage, rest assured that it's easier than you think thanks to rear seats that fold flat for simple loading. In fact, 1,719 litres of maximum boot space (Tourer) and 525 litres (Saloon) ensure there's plenty of room for every occasion, whether that's a business trip or a welcome

getaway. With the smart electric tailgate on Tourer Premium models, the boot will open automatically when you stand behind the car — ideal when you've got your hands full. Once on the road, you'll enjoy the panoramic sunroof which floods the cabin with light, creating the illusion of extra space and giving your passengers a clear view of the world outside.



Car shown i40 Saloon Premium. Car shown not to UK specification.



# Smooth and serene, with power in all the right places.

Welcome to a rare blend of relaxation and exhilaration. Its advanced engines and driving options make it a master of every type of journey.

Pick the engine option that's perfect for you. A 1.7 CRDi 115PS Blue Drive diesel engine is available with manual transmission, ideal for the driving purist. Alternatively, opt for a potent 141PS engine which comes with either a 6-speed manual or new 7-speed Dual Clutch Transmission (DCT) for lightning-fast gear changes and the perfect blend of power and efficiency. Tailor your drive thanks to an advanced Drive Mode selection, where Normal mode helps you negotiate the city with light, agile steering and Sport mode will add an extra thrill to your drive. On i40's with Dual Clutch Transmission, you'll also be able to access Eco mode, for even better fuel economy. No matter how you adapt your experience, you can always rely on a smooth and rewarding drive.

# In a technologically advanced world, i40 helps you move with the times.

Thoughtful and innovative features take care of everything. Nothing should detract from your experience, which is why i40 is equipped with clever technology to make life easier.

Keyless entry with engine start/stop on SE Nav Business and above will ensure you start each journey quickly and easily without fumbling around for keys. Stay connected thanks to Bluetooth® connectivity, and enjoy DAB Digital radio on SE Nav upwards — giving you crystal clear sound quality. Satellite navigation with Traffic Messaging Channel will guide you to your destination in double-quick time, and if

there happens to be a delay on your route you have the option to select a detour to ensure you get to your destination on time. When you do come to a stop, park with confidence and ease thanks to the parking sensors and rear view parking camera, guiding you into the tightest of gaps with minimum fuss. It all means that by the time you arrive at your destination you'll be ready to tackle the day.





# Fuel-saving economy, without compromising your drive.

Controlled economy comes as standard, while extra-fast efficient gear changes will boost your experience. Fewer fuel stops mean there's more time to enjoy the open road.



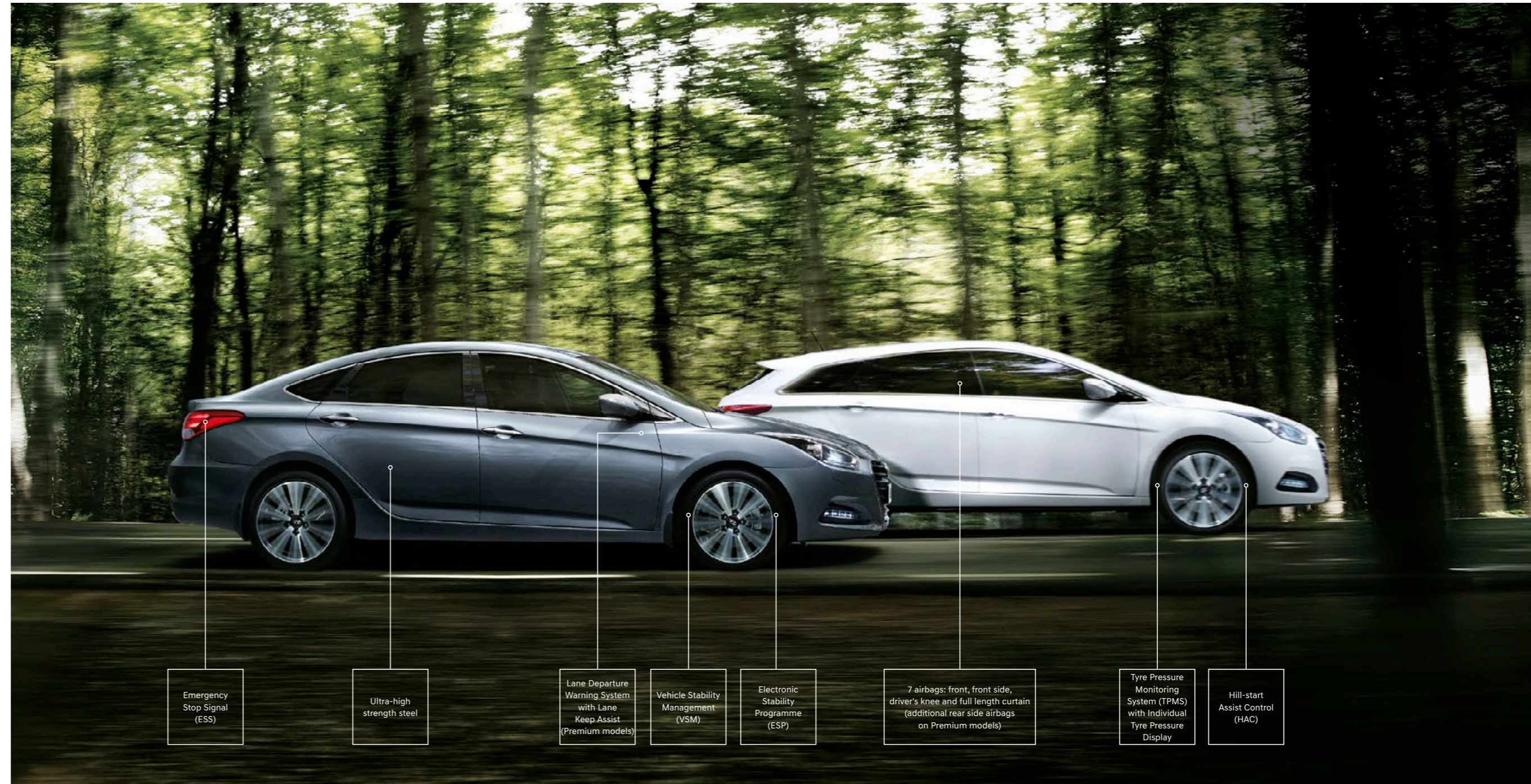
i40 arrives with impressive fuel-saving capabilities. Intelligent Stop & Go on manual models turns off the engine when you come to a standstill before starting it again when you press down on the clutch, while on automatic models it engages the engine when you release the brake. Gear shift indicator lets you know the optimum time to switch gears, while dual clutch transmission is more efficient than a standard automatic transmission by allowing the next gear to be preselected in advance as you accelerate or decelerate, for ultra-fast changes. The result of these clever technologies is an output of up to 67.3 miles per gallon\* on the combined cycle on the 1.7 CRDi 115PS Blue Drive manual model, meaning you'll get Benefit In Kind taxation from 22% and Insurance Group from 13E. It all adds up to some impressive numbers, leaving you with more money to spend on the finer things in life.

# Total reassurance for you and your passengers.

i40 is equipped with an abundance of features, including ones that'll keep you safe. In fact, we've gone above and beyond to ensure you can drive with peace of mind in all conditions.

i40 is constructed from advanced high-strength steel, with high-performance special steel alloy applied to critical areas. Hopefully this won't be called into action thanks to safety technologies such as the Lane Departure Warning System on Premium models, which alerts you if you veer off course. Automatic headlights come as standard and will assist you by coming on when visibility reduces, while the Tyre Pressure Monitoring System lets you know if your tyres are not at the optimum level, ensuring you can drive with maximum grip. Brake Assist applies

the correct amount of braking force to bring your car to a stop in the shortest distance possible and Hill-start Assist ensures you won't roll backwards when you start on steep slopes. The Electronic Stability Programme senses if you're about to skid and applies the brakes to individual wheels to avoid it. If you do have an accident, there's another level of security in the form of up to 9 airbags in all the key areas for you and your passengers, or 7 on S, SE Nav and SE Nav Business models. In i40, you'll drive with confidence 100% of the time.



Emergency Stop Signal (ESS)

Ultra-high strength steel

Lane Departure Warning System with Lane Keep Assist (Premium models)

Vehicle Stability Management (VSM)

Electronic Stability Programme (ESP)

7 airbags: front, front side, driver's knee and full length curtain (additional rear side airbags on Premium models)

Tyre Pressure Monitoring System (TPMS) with Individual Tyre Pressure Display

Hill-start Assist Control (HAC)



Cars shown i40 Saloon Premium with optional Visibility Pack in Titanium Silver metallic paint and i40 Tourer Premium with optional Visibility Pack in Pure White solid paint.



16" alloy wheels shown

**S** An impressive array of features to keep you relaxed on every trip.

**S OFFERS THE FOLLOWING FEATURES AS STANDARD:**

- 16" alloy wheels
- 6 speakers - 2 tweeters, 2 front door, 2 rear door
- 7 airbags - front, front side, driver's knee and full length curtain
- Adjustable intermittent front windscreen wipers with aero blade
- Air conditioning
- Automatic headlights with dusk sensor
- Bluetooth® connectivity
- Cloth seat trim
- Dash trim - black gloss
- Door mirrors - electric adjustment and heated
- Drive mode selection
- Driver's seat with manual height adjustment and electric lumbar support
- Electric parking brake with automatic hold function
- Electric windows - front and rear with anti-trap mechanism for all windows and one touch controls
- Exterior door handles - body coloured
- Intelligent Stop & Go (ISG)
- Leather-wrapped steering wheel and gear knob
- LED brake light - high mounted
- Projection headlights with LED daytime running lights
- Radiator grille - black matt finish
- Remote central locking with alarm
- Steering wheel audio and phone controls
- Stereo RDS
- Tyre Pressure Monitoring System (TPMS) with individual tyre pressure display
- USB & aux connections
- Window surrounds - chrome effect

**Tourer** FEATURES OVER SALOON

- Retractable load cover
- Silver-coloured roof rails

**SE Nav** Packed with extra features to enhance your driving experience.

**SE NAV OFFERS THE FOLLOWING FEATURES OVER S:**

- 17" alloy wheels (1.7 CRDi 141PS DCT Blue Drive only)
- Automatic-dimming rear view mirror
- Automatic windscreen wipers with rain sensor
- Climate control - dual zone with auto de-fog system for front windscreen
- Cruise control with speed limiter
- DAB radio
- Door mirrors - electric adjustment and heated with power folding
- Door sill - stainless steel
- Driver's seat with electric adjustment and lumbar support
- Exterior door handles - body coloured with chrome inserts
- Front passenger's seat with manual height adjustment
- Front windscreen wiper de-icer
- Heated front seats
- Heated steering wheel
- Interior door handles - chrome effect
- LED fog lights - front
- Luggage net
- Parking sensors - front and rear (acoustic only)
- Privacy glass
- Solar glass with sunshade band
- Touchscreen satellite navigation system with rear view parking camera and parking guidance system

**Tourer** FEATURES OVER SALOON

- Rear seat - easy folding system
- Retractable load cover
- Silver-coloured roof rails



**SE Nav Business** The perfect car for effortless driving, mile after mile.

SE NAV BUSINESS OFFERS THE FOLLOWING FEATURES OVER SE NAV:

- Driver's seat with memory function
- Front passenger's seat with electric adjustment and lumbar support
- Keyless entry with engine start/stop button
- Leather seat trim (seat facings only)
- Ventilated front seats

**Tourer** FEATURES OVER SALOON

- Rear seat - easy folding system
- Retractable load cover
- Silver-coloured roof rails



**Premium** Supreme style and luxurious comfort for the ultimate driving experience.

PREMIUM OFFERS THE FOLLOWING FEATURES OVER SE NAV BUSINESS:

- 18" alloy wheels
- 2 extra airbags - rear side
- Alloy pedals
- Heated rear seats (outer rear seat bases only)
- Lane Departure Warning System with Lane Keep Assist
- Panoramic sunroof - electric tilt and slide
- Radiator grille - black with chrome inserts
- Rear electric window blind - Saloon only
- Satin chrome effect door frame and beltline moulding
- Supervision instrument cluster with LCD colour display

**Tourer** FEATURES OVER SALOON

- Luggage floor rail system
- Rear seat - easy folding system
- Retractable load cover
- Silver-coloured roof rails
- Smart electric tailgate



Pure White - Solid



White Crystal - Pearl



Platinum Silver - Metallic



Titanium Silver - Metallic



Mineral Blue - Metallic



Ocean View - Metallic



Phantom Black - Pearl



Red Merlot - Pearl

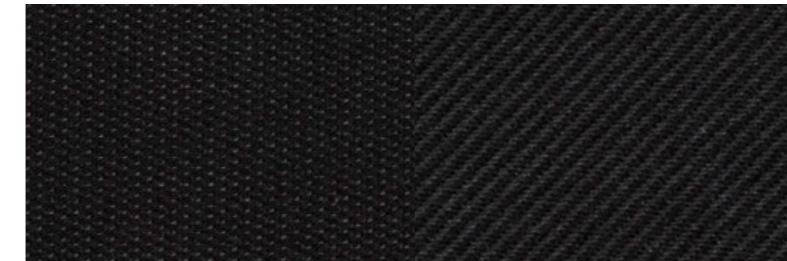
## Visibility Pack

Visibility Pack is optional on Premium models and includes a host of innovations to make driving even easier. Speed Sign Recognition ensures you're always aware of the limit, while you'll also benefit from Bi-Xenon Headlights, Auto Forward Levelling System and Smart High Beam. Clever features for maximum visibility.

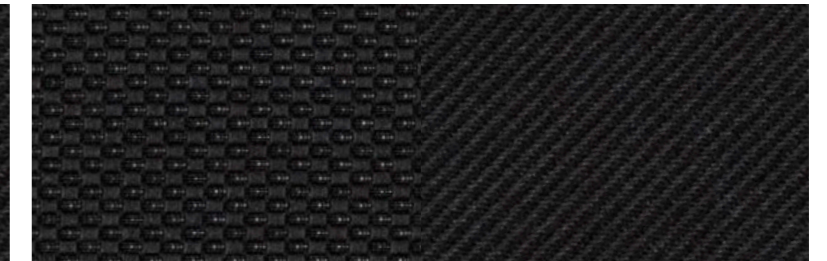


## Upholstery

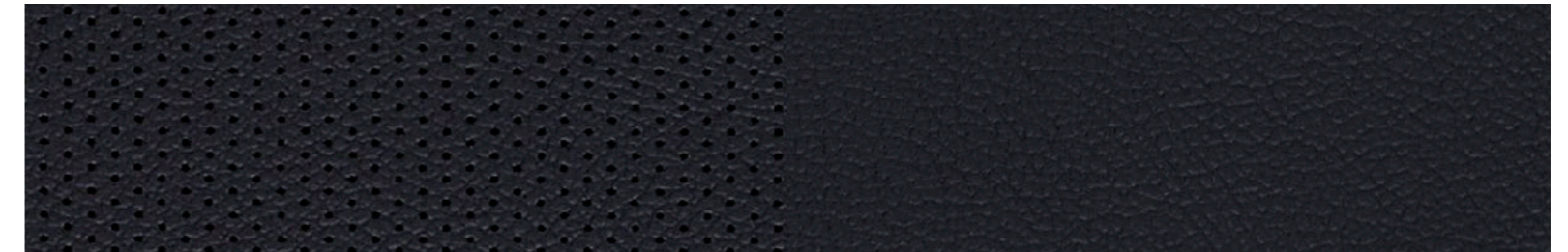
SALOON — BLACK CLOTH S & SE NAV MODELS



TOURER — BLACK CLOTH S & SE NAV MODELS



SALOON & TOURER — BLACK LEATHER (SEAT FACINGS ONLY) SE NAV BUSINESS & PREMIUM MODELS





Roof rack



Bumper protector - Tourer only



Ice and sun screen



Reversible boot mat - Tourer only



Dog guard - Tourer only



Mud guards



Bicycle carrier



Carpet mat set

## Add to your i40

There's a variety of Hyundai-approved accessories that you can add. You might opt for a roof box for extra storage, or the reversible boot mat and carpet mat set that will keep the interior in perfect condition. Just read through our options, speak to your local Hyundai Dealer, or visit our website.

Roof box



	S	SE Nav	SE Nav Business	Premium
<b>ENGINE AND TRANSMISSION</b>				
1.7 CRDi 115PS Blue Drive - 6 Speed Manual Transmission	•	•	•	-
1.7 CRDi 141PS Blue Drive - 6 Speed Manual Transmission	•	•	•	•
1.7 CRDi 141PS Blue Drive - 7 Speed Dual Clutch Transmission (DCT)	-	•	•	•
Intelligent Stop & Go (ISG)	•	•	•	•
<b>EXTERIOR</b>				
16" Alloy Wheels	•	-	-	-
16" Alloy Wheels - Manual Blue Drive only	-	•	•	-
17" Alloy Wheels - DCT Blue Drive only	-	•	•	-
18" Alloy Wheels	-	-	-	•
Door Mirrors with Integrated LED Indicators - Body Coloured	•	•	•	•
Exterior Door Handles - Body Coloured	•	-	-	-
Exterior Door Handles - Body Coloured with Chrome Inserts	-	•	•	•
LED Brake Light - High-mounted	•	•	•	•
Radiator Grille - Black Matte Finish	•	•	•	-
Radiator Grille - Black with Chrome Inserts	-	-	-	•
Rear Spoiler - Tourer only	•	•	•	•
Silver-coloured Roof Rails - Tourer only	•	•	•	•
Solid Paint	•	•	•	•
Window Surrounds - Chrome Effect	•	•	•	-
Window Surrounds - Satin Chrome Effect	-	-	-	•
<b>INTERIOR</b>				
Alloy Pedals	-	-	-	•
Dash Trim - Black Gloss	•	-	-	-
Dash Trim - Brushed Chrome Effect	-	•	•	•
Door Sill - Stainless Steel	-	•	•	•
Heated Steering Wheel	-	•	•	•
Interior Door Handles - Chrome Effect	-	•	•	•
Interior Light - Front, Rear and Luggage Compartment	•	•	•	•
Leather-wrapped Steering Wheel and Gear Knob	•	•	•	•
<b>SEATING</b>				
Cloth Seat Trim	•	•	-	-
Driver's Seat with Electric Adjustment and Lumbar Support	-	•	•	•
Driver's Seat with Manual Height Adjustment and Electric Lumbar Support	•	-	-	-
Driver's Seat with Memory Function	-	-	•	•
Front Head Restraints - Vertical and Horizontal Adjustment	•	•	•	•

	S	SE Nav	SE Nav Business	Premium
Front Passenger's Seat with Electric Adjustment and Lumbar Support	-	-	•	•
Front Passenger's Seat with Manual Height Adjustment	-	•	-	-
Heated Front Seats	-	•	•	•
Heated Rear Seats (outer rear seat bases only)	-	-	-	•
Leather Seat Trim (seat facings only)	-	-	•	•
Split Folding Rear Seats (60/40)	•	•	•	•
Ventilated Front Seats	-	-	•	•
<b>VENTILATION &amp; VISIBILITY</b>				
Adjustable Intermittent Front Windscreen Wipers with Aero Wiper Blade	•	•	•	•
Air Conditioning	•	-	-	-
Automatic-dimming Rear View Mirror	-	•	•	•
Automatic Headlights with Dusk Sensor	•	•	•	•
Automatic Windscreen Wipers with Rain Sensor	-	•	•	•
Climate Control - Dual Zone with Auto De-fog System for Front Windscreen	-	•	•	•
Front Windscreen Wiper De-icer	-	•	•	•
Heated Rear Windscreen - Saloon only	•	•	•	•
Heated Rear Windscreen with Washer and Wiper - Tourer only	•	•	•	•
LED Brake Lights	•	•	•	•
LED Fog Lights - Front	-	•	•	•
Panoramic Sunroof - Electric Tilt and Slide	-	-	-	•
Privacy Glass	-	•	•	•
Projection Headlights with LED Daytime Running Lights	•	•	•	•
Rear Air Vents in Centre Console	•	•	•	•
Rear Electric Window Blind - Saloon only	-	-	-	•
Solar Glass with Sunshade Band	-	•	•	•
Tinted Glass with Sunshade Band	•	-	-	-
Welcome and Follow-me-home Headlight Function	•	•	•	•
<b>CONVENIENCE</b>				
12V Power Outlet in Front and Rear Console	•	•	•	•
Armrest - Front with Storage	•	•	•	•
Armrest - Rear with Cup Holder	•	•	•	•
Bottle Holders - Front Centre Console, Front and Rear Door	•	•	•	•
Courtesy Light - Front Door	•	•	•	•
Cruise Control with Speed Limiter	-	•	•	•
Door Mirrors - Electric Adjustment and Heated	•	•	•	•
Door Mirrors - Electric Adjustment and Heated with Power Folding	-	•	•	•

	S	SE Nav	SE Nav Business	Premium
Electric Windows - Front and Rear with Anti-Trap Mechanism for All Windows and One-touch Controls	•	•	•	•
Front Seat Back Pockets - Driver and Passenger Seat	•	•	•	•
Glove Compartment with Illumination and Lock	•	•	•	•
Luggage Net	-	•	•	•
One-touch Indicators	•	•	•	•
Power Assisted Steering	•	•	•	•
Rear Seat - Easy Folding System - Tourer only	-	•	•	•
Retractable Load Cover - Tourer only	•	•	•	•
Smart Electric Tailgate - Tourer only	-	-	-	•
Spare Wheel - Emergency Space Saver	•	•	•	•
Steering Column - Height and Reach Adjustable	•	•	•	•
Sun Visors with Vanity Mirrors and Illumination	•	•	•	•
<b>TECHNOLOGY &amp; ENTERTAINMENT</b>				
6 Speakers - 2 Tweeters, 2 Front Door, 2 Rear Door	•	•	•	•
Bluetooth* Connectivity†	•	•	•	•
DAB Radio	-	•	•	•
Drive Mode Selection	•	•	•	•
Gear Shift Indicator - Manual only	•	•	•	•
Intelligent Stop & Go (ISG)	•	•	•	•
Parking Sensors - Front and Rear (acoustic only)	-	•	•	•
Parking System - Rear Camera and Guidance System	-	•	•	•
Phone Connection - Android™ Auto‡	-	•	•	•
Phone Connection - Apple CarPlay™**	-	•	•	•
Steering Wheel Audio and Phone Controls	•	•	•	•
Stereo RDS Radio	•	•	•	•
Supervision Instrument Cluster with LCD Colour Display	-	-	-	•
Touchscreen Satellite Navigation including Traffic Messaging Channel, MapCare and LIVE Services†	-	•	•	•
Trip Computer	•	•	•	•
USB and Aux Connections	•	•	•	•
<b>SAFETY &amp; SECURITY</b>				
2 Airbags - Rear Sides	-	-	-	•
7 Airbags - Front, Front Side, Driver's Knee and Full Length Curtain	•	•	•	•
Active Head Restraints - Front	•	•	•	•

	S	SE Nav	SE Nav Business	Premium
Anti-lock Brake System (ABS) with Electronic Brake force Distribution (EBD)	•	•	•	•
Brake Assist System (BAS)	•	•	•	•
Childproof Rear Door Locks	•	•	•	•
Deadlocks	•	•	•	•
Electric Parking Brake with Automatic Hold Function	•	•	•	•
Electronic Stability Programme (ESP)	•	•	•	•
Emergency Stop Signal (ESS)	•	•	•	•
Front Seatbelt Pre-tensioners	•	•	•	•
Height Adjustable Front Seatbelts	•	•	•	•
Hill-start Assist Control (HAC)	•	•	•	•
Immobiliser	•	•	•	•
ISOfix Child Seat Anchorage Points - Rear (outer seats only)	•	•	•	•
Keyless Entry with Engine Start/Stop Button	-	-	•	•
Lane Departure Warning System with Lane Keep Assist	-	-	-	•
Locking Wheel Nuts	•	•	•	•
Passenger Airbag De-activation Switch	•	•	•	•
Remote Central Locking with Alarm	•	•	•	•
Seatbelt Reminder	•	•	•	•
Speed-sensitive Automatic Door Locking	•	•	•	•
Tyre Pressure Monitoring System (TPMS) with Individual Tyre Pressure Display	•	•	•	•
Vehicle Stability Management (VSM)	•	•	•	•
<b>CUSTOMER OPTIONS</b>				
Hyundai Sense Service†	○	○	○	○
Metallic / Pearl Paint	○	○	○	○
Visibility Pack: Bi-Xenon Headlights, AFLS, Headlight Washers, Smart High Beam, Speed Sign Recognition	-	-	-	○
<b>WARRANTY**</b>				
5 Year Unlimited Mileage Warranty 5 Year Roadside Assistance 5 Years of Annual Vehicle Health Checks	•	•	•	•
12 Years' Anti-Perforation Warranty	•	•	•	•

• Standard ○ Optional at extra cost  
\* Please contact your dealer for the latest list of compatible phones.  
† LIVE Services includes a 7-year subscription. A compatible smartphone with data plan required to activate services. Please contact your dealer for full details.  
‡ Hyundai Sense Service Plan full terms and conditions apply. Please see [www.hyundai.co.uk/hyundai-sense](http://www.hyundai.co.uk/hyundai-sense) or ask your local dealer for full terms and conditions.  
\*\* 5 Year Unlimited Mileage Warranty terms and exclusions apply. Please see [www.hyundai.co.uk](http://www.hyundai.co.uk) or ask your local dealer for full terms and exclusions.  
Apple CarPlay™ is a trademark of Apple Inc. Android™ is a trademark of Google Inc. The Bluetooth® word mark and logos are registered trademarks owned by the Bluetooth SIG Inc. and any use of such marks by Hyundai Motor UK Ltd is under license. Other trademarks and trade names are those of their respective owners.

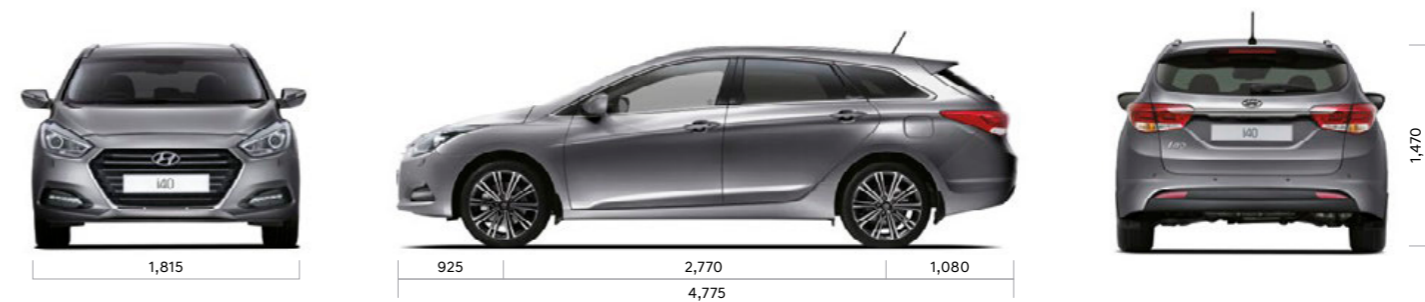
	1.7 CRDi 115PS Blue Drive 6 Speed Manual	1.7 CRDi 141PS Blue Drive 6 Speed Manual	1.7 CRDi 141PS Blue Drive 7 Speed Dual Clutch Transmission (DCT)
<b>ENGINE</b>			
Euro status	Euro VI	Euro VI	Euro VI
Type	4 cylinder DOHC	4 cylinder DOHC	4 cylinder DOHC
	16 valve	16 valve	16 valve
Displacement (cc)	1,685	1,685	1,685
Bore & stroke (mm)	77.2 X 90	77.2 X 90	77.2 X 90
Compression ratio	15.7:1	15.7:1	15.7:1
Max power kW/PS	85 / 115 @ 4,000 rpm	104 / 141 @ 4,000 rpm	104 / 141 @ 4,000 rpm
Torque (Nm/lbs ft)	280 / 206 @ 1,250-2,500	340 / 251 @ 1,700-2,500	340 / 251 @ 1,700-2,500
0-62mph (seconds)	S 12.4 T 12.6	S 10.3 T 10.5	S 10.8 T 11.0
Top speed (mph)	S 119 T 118	S 126 T 124	S 126 T 124
<b>SUSPENSION</b>			
Front	MacPherson strut with coil spring		
Rear	Multi-link type with anti-roll stabiliser bar		
<b>STEERING</b>			
System	Rack and pinion with electric motor assistance		
Steering wheel lock to lock turns	2.88		
Turning circle (metres)	10.94		
<b>BRAKES</b>			
System	Anti-lock Brake System (ABS) with diagonally split front and rear discs		
Front	Disc		
Rear	Disc		
<b>TYRES</b>			
S	205/60 R16	205/60 R16	-
SE NAV	205/60 R16	205/60 R16	215/50 R17
SE NAV BUSINESS	205/60 R16	205/60 R16	215/50 R17
PREMIUM	-	225/45 R18	225/45 R18
<b>WHEELS</b>			
S	Alloy 7.0J x 16	Alloy 7.0J x 16	-
SE NAV	Alloy 7.0J x 16	Alloy 7.0J x 16	Alloy 7.5J x 17
SE NAV BUSINESS	Alloy 7.0J x 16	Alloy 7.0J x 16	Alloy 7.5J x 17
PREMIUM	-	Alloy 8.0J x 18	Alloy 8.0J x 18

		1.7 CRDi 115PS Blue Drive 6 Speed Manual	1.7 CRDi 141PS Blue Drive 6 Speed Manual	1.7 CRDi 141PS Blue Drive 7 Speed Dual Clutch Transmission (DCT)
<b>DIMENSIONS</b>				
Overall length (mm)		S 4,745 T 4,775		
Overall width (mm)		1,815		
Overall height (mm)		1,470		
Wheelbase (mm)		2,770		
Track - front (mm)	S	1,591	1,591	-
	SE NAV	1,591	1,591	1,579
	SE NAV BUSINESS	1,591	1,591	1,579
	PREMIUM	-	1,579	1,579
Track - rear (mm)	S	1,597	1,597	-
	SE NAV	1,597	1,597	1,585
	SE NAV BUSINESS	1,597	1,597	1,585
	PREMIUM	-	1,585	1,585
<b>WEIGHTS &amp; CAPACITIES</b>				
Luggage capacity VDA (litres) - Seats up		S 525 T 553		
Luggage capacity VDA (litres) - Seats down		T 1,719		
Kerb weight (kg) - Min-max*		S 1,497-1,634 T 1,514-1,667	S 1,507-1,644 T 1,524-1,677	S 1,524-1,661 T 1,539-1,692
Payload (kg) - Min-max†		S 456-593 T 463-616	S 446-583 T 453-606	S 439-576 T 458-611
Gross vehicle weight (kg)‡		S 2,090 T 2,130	S 2,090 T 2,130	S 2,100 T 2,150
Max tow weight (kg) - Braked		1,500	1,800	1,500
Max tow weight (kg) - Unbraked			700	
Gross train weight (kg)**		S 3,590 T 3,630	S 3,890 T 3,930	S 3,600 T 3,650
Noseweight (kg)		80	80	70
Max roof weight (kg)		80	80	70
Fuel tank capacity (litres)		70		
<b>FUEL CONSUMPTION &amp; EMISSIONS - S</b>				
Urban mpg (l/100km)††		57.6 (4.9)	58.9 (4.8)	-
Extra urban mpg (l/100km)††		74.3 (3.8)	68.9 (4.1)	-
Combined mpg (l/100km)††		67.3 (4.2)	65.7 (4.3)	-
CO2 Emissions (g/km)††		110	114	-
<b>FUEL CONSUMPTION &amp; EMISSIONS - SE NAV &amp; SE NAV BUSINESS</b>				
Urban mpg (l/100km)††		57.6 (4.9)	58.9 (4.8)	54.3 (5.2)
Extra urban mpg (l/100km)††		74.3 (3.8)	68.9 (4.1)	64.2 (4.4)
Combined mpg (l/100km)††		67.3 (4.2)	65.7 (4.3)	60.1 (4.7)
CO2 Emissions (g/km)††		110	114	123

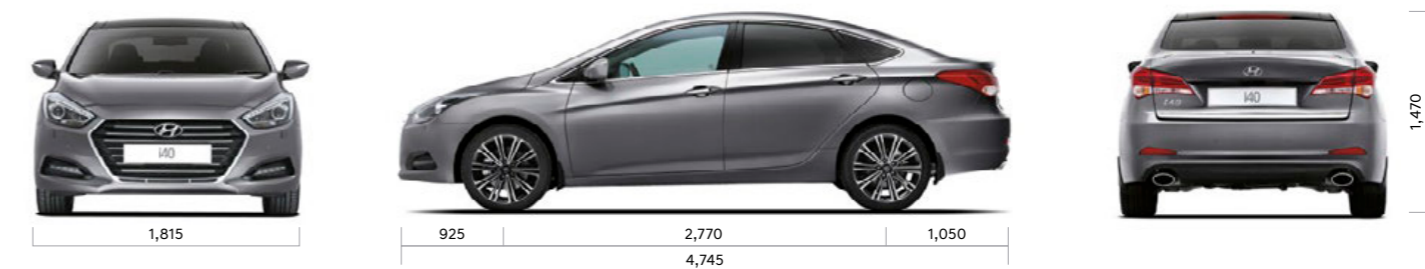
		1.7 CRDi 115PS Blue Drive 6 Speed Manual	1.7 CRDi 141PS Blue Drive 6 Speed Manual	1.7 CRDi 141PS Blue Drive 7 Speed Dual Clutch Transmission (DCT)
<b>FUEL CONSUMPTION &amp; EMISSIONS - PREMIUM</b>				
Urban mpg (l/100km)††		-	54.3 (5.2)	54.3 (5.2)
Extra urban mpg (l/100km)††		-	64.2 (4.4)	64.2 (4.4)
Combined mpg (l/100km)††		-	60.1 (4.7)	60.1 (4.7)
CO2 Emissions (g/km)††		-	123	123

S Saloon T Tourer  
\* Kerb Weight defined as the total weight of a vehicle with standard equipment (the minimum figure and factory fitted optional equipment (the maximum figure) and all necessary operating consumables such as oils, coolant, air conditioning refrigerant and a full tank of fuel, while not loaded with either driver, passengers or cargo.  
† Payload is the difference between the Gross Vehicle Weight and the Kerb Weight.  
‡ Gross Vehicle Weight is the maximum allowable weight of the vehicle, fully loaded with passengers and cargo (The Payload) and includes the weight of the vehicle.  
\*\* The Gross Train Weight is the weight of the fully loaded vehicle plus a fully loaded trailer and must not be exceeded.  
†† Our vehicles are homologated according to the current European legislation on the basis of the New European Driving Cycle (NEDC). The results of the tests are published for comparison purposes. Real fuel consumptions, emissions and electric range will be different and will vary according to driving conditions, driving styles, types of routes and the standard of maintenance of the vehicle.  
‡‡ g/km = grams of emitted substance per kilometre travelled. CO<sub>2</sub> = Carbon Dioxide

#### DIMENSIONS – TOURER



#### DIMENSIONS – SALOON



Unit : mm



## Hyundai Finance

Hyundai Finance provides a range of products to make the purchase of your Hyundai even more accessible. To meet your requirements, our plans are simple but offer you the same quality and flexibility as your new Hyundai. Applying for a finance plan through your local Hyundai dealer is easy and they will support you in choosing the right plan for your needs.

As a customer your satisfaction is at the heart of our business, and whilst you are able to manage your account online, we are only a phone call away should you require any help or assistance. We offer two main products to assist your car purchase:

### CONDITIONAL SALE

Conditional Sale is a simple and traditional way to finance your car over a fixed period. You decide to fund the entire purchase price or put down a deposit and as your interest rate is fixed you'll pay the same amount each month. After all repayments have been made you'll own the car.

### PERSONAL CONTRACT PURCHASE (PCP)

Personal Contract Purchase could make it easier for you to get behind the wheel of your Hyundai, it may also help you to change your car on a more regular basis.

The way it works is simple — you decide what level of deposit to pay. From nil, up to a maximum of 50%. You also decide your repayment period (typically 25, 37 or 49 months) and set your anticipated annual mileage. This will determine your optional final payment.

You will then make fixed monthly repayments based on the outstanding balance and interest, less your optional final payment, and at the end of your monthly repayment period you will have three choices: return, retain or renew.

**RETURN:** you can hand the car back to us with nothing further to pay (subject to fair wear and tear, and/or excess mileage charges may apply).

**RETAIN:** you can pay the optional final payment and the car is yours.

**RENEW:** you can part exchange the car, using any equity over and above the optional final payment as deposit on your next car (equity is anticipated, but this cannot be guaranteed).

T&Cs apply. Subject to status. Applicants must be 18 or over. Guarantee/Indemnity may be required. Hyundai Finance, RH1 1SR



## 5 Year Unlimited Mileage Warranty

The passion and belief we have in the quality of our products mean we can offer an aftercare package to match. Visit your local Hyundai Authorised Repairer and we'll attend to you straight away, giving you a fully-inclusive quote for the work you've requested.

Only Hyundai-Trained Technicians will carry out this work, and we'll also check for any software updates to keep your car running smoothly. You can also be sure that we'll only use Hyundai Genuine Parts which have been thoroughly tested and approved. On collection, we'll explain your invoice and call you within 3 days of your appointment to check you're completely satisfied.

As the people who know your car best, the quality of our service is second to none.

### 5 YEAR UNLIMITED MILEAGE WARRANTY

A manufacturer-backed, unlimited mileage, 5 Year Warranty\* protects your Hyundai against manufacturing defects\*\* and is fully transferable to the next owner.

### 5 YEAR ROADSIDE ASSISTANCE

24 hour roadside assistance should you ever need it, anywhere in the UK or Channel Islands.

### 5 YEAR ANNUAL VEHICLE HEALTH CHECKS

A free, expert visual inspection by your Hyundai dealer on key areas of your car, to help sort any problems and ensure trouble-free motoring.

### ADDITIONAL AFTERCARE

A 12 year Anti-perforation warranty against perforation of the bodywork, from the inside of the panel outwards.

\* Hyundai 5 Year Warranty subject to Terms and Conditions see website Hyundai.co.uk.

\*\* Vehicles used for taxi or private hire are covered by a 5 year, 100,000 mile warranty. Cover excludes fair wear and tear.



## Motability Plans

---

The Motability plan will enable some of you to purchase a Hyundai at a preferential rate. If you receive the Higher Rate Mobility Component of the Disability Living Allowance, you're entitled to access this excellent scheme. In recognition of your requirements, many Hyundai models can be ordered on the 3 year Contract Hire Scheme.

You'll benefit from advantageous features like power steering, height-adjustable driver's seat and automatic gearbox, which all come as standard.

Most of our dealers are Motability Accredited, so just contact them and they'll be happy to help. If you'd like to read about the scheme in more depth, simply visit [www.motability.co.uk](http://www.motability.co.uk)



## Ownership

---

We're always thinking about how to make owning a Hyundai an enjoyable experience and that's exactly what you get with a Hyundai Fixed Price Service Plan. As a valued customer, we'll take care of all your Hyundai's scheduled servicing for up to 5 years or 50,000 miles.

Being covered by a Hyundai Fixed Price Service Plan means:

- Your Hyundai's servicing is covered in a single payment that can be included in your finance agreement
- You have a choice to cover your servicing for 3 or 5 years\*
- Only trained Technicians will expertly assess and service your Hyundai
- Should any parts need replacing during your servicing, your Hyundai will be fitted with Hyundai Genuine Parts

For more information, simply contact your local Hyundai dealer or our Customer Services team, who will be happy to help.

\* Price varies according to model, fuel type and mileage. Only available on vehicles registered on or after 1<sup>st</sup> March 2013. Price includes VAT where applicable. Time and mileage restrictions apply. Excludes seasonal checks. Terms and conditions apply.



## Hyundai Click To Buy™

---

Hyundai Click To Buy™ is the smarter, easier way to purchase a new car. Innovation has always been part of our DNA, and now we've streamlined the buying process itself. With a few simple clicks you can trade-in your old car, configure your new Hyundai, arrange finance and pay a deposit — all from your computer, tablet or smartphone device.

For added flexibility you can pay in cash, and the delivery arrangements couldn't be simpler. You can choose to get it delivered at your home at a cost, or collect it in the evening or weekend from your local dealer.

You'll be admiring your Hyundai in double-quick time thanks to the latest example of our new-thinking philosophy.

## MyHyundai

---

MyHyundai is a complimentary and exclusive owners' club with a variety of unique benefits that'll make your ownership experience even more enjoyable.

As well as amazing offers that range from incredible getaways to indulgent gifts, you'll also be able to set your own alerts and preferences, while storing all your car's details in one, easily-accessible place.



## Staying In Touch

---

We're committed to offering you the very best. That means, as well as delivering impressive cars, we'll also deliver helpful advice and service, every step of the way. Simply contact us on **0800 981 981** or visit our website at [www.hyundai.co.uk](http://www.hyundai.co.uk)



Keep up to date with our news on our Facebook page at [www.facebook.com/hyundaiuk](http://www.facebook.com/hyundaiuk)



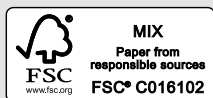
See all our latest tweets at [www.twitter.com/hyundai\\_uk](http://www.twitter.com/hyundai_uk)



View our latest videos at [www.youtube.com/user/hyundaimotoruk](http://www.youtube.com/user/hyundaimotoruk)

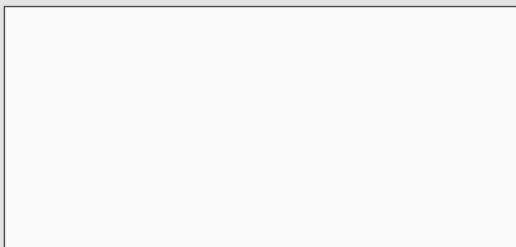
Specifications shown in this brochure are based upon the latest available information at the time of printing. The colours and finishes reproduced in this brochure are subject to the limitations of the printing process and may vary from the actual colour and paint finish.

In line with our policy of continual product improvement, Hyundai Motor UK Ltd reserves the right to make changes at any time, without notice, to prices, colours, materials, design, shape, specifications and models, and to discontinue items. For the latest details, please consult your Hyundai dealer.



This brochure is printed on FSC® (Forestry Stewardship Council) certified paper which has been produced at a mill and printed by a printer that has been certified to the ISO 14001 environmental standard using vegetable oil based inks and aqueous based coatings. It can be disposed of by recycling, incineration for recovery or is biodegradable.

Your local Hyundai dealer:



Customer enquiries: 0800 981 981



Hyundai Motor UK Ltd  
728 London Road, High Wycombe, Bucks HP11 1HE  
T: 01494 428600 F: 01494 428699 [www.hyundai.co.uk](http://www.hyundai.co.uk)

Model on front cover: i40 Tourer Premium in Titanium Silver metallic paint. 03/17 HB2470

# i40 Price Guide

October 2017

Saloon	FUEL TYPE	CO <sub>2</sub> EMISSIONS G/KM	INSURANCE GROUP (1-50)	VED FIRST YEAR COST (£)	BASIC RETAIL PRICE (£)	VAT (£)	RETAIL PRICE (£)	RECOMMENDED ON THE ROAD PRICE (£)	P11D VALUE (£)	BIK TAX % 2017-2018
<b>S</b>										
1.7 CRDi 115PS Blue Drive	D	110	13	140.00	16,296.67	3,259.33	19,556.00	20,335.00	£20,140.00	24
1.7 CRDi 141PS Blue Drive	D	114	18	160.00	16,946.67	3,389.33	20,336.00	21,135.00	£20,920.00	24
<b>SE Nav</b>										
1.7 CRDi 115PS Blue Drive	D	110	13	140.00	17,963.33	3,592.67	21,556.00	22,335.00	£22,140.00	24
1.7 CRDi 141PS Blue Drive	D	114	19	160.00	18,613.33	3,722.67	22,336.00	23,135.00	£22,920.00	24
1.7 CRDi 141PS Blue Drive DCT	D	123	19	160.00	20,196.67	4,039.33	24,236.00	25,035.00	£24,820.00	26
<b>SE Nav Business</b>										
1.7 CRDi 115PS Blue Drive	D	110	14	140.00	19,213.33	3,842.67	23,056.00	23,835.00	£23,640.00	24
1.7 CRDi 141PS Blue Drive	D	114	19	160.00	19,863.33	3,972.67	23,836.00	24,635.00	£24,420.00	24
1.7 CRDi 141PS Blue Drive DCT	D	123	19	160.00	21,446.67	4,289.33	25,736.00	26,535.00	£26,320.00	26
<b>Premium</b>										
1.7 CRDi 141PS Blue Drive	D	123	20	160.00	21,280.00	4,256.00	25,536.00	26,335.00	£26,120.00	26
1.7 CRDi 141PS Blue Drive DCT	D	123	20	160.00	22,863.33	4,572.67	27,436.00	28,235.00	£28,020.00	26

Tourer	FUEL TYPE	CO <sub>2</sub> EMISSIONS G/KM	INSURANCE GROUP (1-50)	VED FIRST YEAR COST (£)	BASIC RETAIL PRICE (£)	VAT (£)	RETAIL PRICE (£)	RECOMMENDED ON THE ROAD PRICE (£)	P11D VALUE (£)	BIK TAX % 2017-2018
<b>S</b>										
1.7 CRDi 115PS Blue Drive	D	110	13	140.00	17,338.33	3,467.67	20,806.00	21,585.00	21,390.00	24
1.7 CRDi 141PS Blue Drive	D	114	18	160.00	17,988.33	3,597.67	21,586.00	22,385.00	22,170.00	24
<b>SE Nav</b>										
1.7 CRDi 115PS Blue Drive	D	110	13	140.00	19,005.00	3,801.00	22,806.00	23,585.00	23,390.00	24
1.7 CRDi 141PS Blue Drive	D	114	19	160.00	19,655.00	3,931.00	23,586.00	24,385.00	24,170.00	24
1.7 CRDi 141PS Blue Drive DCT	D	123	19	160.00	21,238.33	4,247.67	25,486.00	26,285.00	26,070.00	26
<b>SE Nav Business</b>										
1.7 CRDi 115PS Blue Drive	D	110	14	140.00	20,255.00	4,051.00	24,306.00	25,085.00	24,890.00	24
1.7 CRDi 141PS Blue Drive	D	114	19	160.00	20,905.00	4,181.00	25,086.00	25,885.00	25,670.00	24
1.7 CRDi 141PS Blue Drive DCT	D	123	19	160.00	22,488.33	4,497.67	26,986.00	27,785.00	27,570.00	26
<b>Premium</b>										
1.7 CRDi 141PS Blue Drive	D	123	20	160.00	22,405.00	4,481.00	26,886.00	27,685.00	27,470.00	26
1.7 CRDi 141PS Blue Drive DCT	D	123	20	160.00	23,988.33	4,797.67	28,786.00	29,585.00	29,370.00	26

## Optional Extras - Saloon & Tourer

Metallic/Pearl Paint	487.50	97.50	585.00
Visibility Pack: Bi-Xenon Headlights, Adaptive Forward Lighting System (AFLS), Headlight Washers, Smart High Beam, Speed Sign Recognition Premium models only	829.17	165.83	995.00

## Hyundai Service Plans

Affordable Hyundai service plans are available across the range. Please ask your local dealer for details\*

DCT = Dual Clutch Transmission

\* With the exceptions of the iLoad and i800, any current Hyundai vehicle registered in the UK is eligible provided that it is less than 13 months old and has yet to undergo its first service.

† Please contact your dealer for the latest list of compatible mobile phones.

‡ 5 Year Warranty terms and exclusions apply. Please see [www.hyundai.co.uk](http://www.hyundai.co.uk) for full terms and exclusions.

\*\* LIVE Services includes a 7 year subscription. Please contact your dealer for full details. A compatible smartphone with a data plan required to activate services.

Apple CarPlay™ is a trademark of Apple Inc. Android Auto™ is a trademark of Google Inc.

**All prices are in Great British Pounds and are correct at time of print. For full specifications and features please check with your local dealer or visit [www.hyundai.co.uk](http://www.hyundai.co.uk)**