

LEXUS RCF



 LEXUS

View Offers



Watch the Video



Find a Dealer



Book a Test Drive



LEXUS



AMAZING IN MOTION

With its exquisitely crafted steering wheel in your hands, the all-new RC F delivers breathtaking acceleration and performance. This latest 'F model' was developed at the Lexus technical centre near Fuji Speedway (its toughest curves appear in the 'F' marque logo) by the same engineering team that created our legendary LFA supercar and IS F high-performance saloon. Featuring an extraordinarily rigid chassis, combined with motorsport-inspired aerodynamics and a race-tuned V8 engine, the new RC F takes you to a new level of driving excitement.

WE CREATED THE NEW RC F
TO DELIVER MAXIMUM
ENJOYMENT,
WHETHER ON THE RACETRACK
OR OPEN ROAD

Yukihiko Yaguchi, RC F Chief Engineer

View
Offers



Watch
the Video



Find
a Dealer



Book
a Test Drive



LEXUS

THE NEW RC F

Thrilling to drive, this all-new Lexus fuses muscular looks with leading edge motorsport technology. Engineered for sheer exhilaration, the new RC F is a high-performance 2+2 coupé. Aggressive styling displays race-bred aerodynamics and impressive 19-inch forged alloy wheels, while the interior features LFA-inspired instruments. Under the bonnet, the most powerful V8 road engine ever developed by Lexus delivers its 477 DIN hp to the rear wheels via a rapid 8-speed Sport Direct Shift automatic transmission. When downshifting, you'll experience the addictive sound of the throttle 'blipping' between gears, while a Torque Vectoring Differential (optional on RC F and standard on RC F Carbon) ensures greater control.



View Offers



Watch the Video



Find a Dealer



Book a Test Drive



LEXUS



ENGINEERED FOR EXHILARATION

Relish the most powerful Lexus V8 road car engine ever built, endurance tested at the world's toughest racetracks. Driven at the gruelling Nürburgring 24-hour race and Pikes Peak Hill Climb in Colorado, this new hand-built naturally aspirated 5.0-litre V8 engine resets benchmarks for sports performance. Developing 477 DIN hp and 530 Nm of torque, it creates an amazing soundtrack, delivering a low tone up to 3000 rpm and a higher-pitched roar above 6000 rpm. The cylinder head and other key engine components have been developed by the same team that created the incredible Lexus LFA V10 engine. See page 24 for more engine and component performance information.

View
Offers



Watch
the Video



Find
a Dealer



Book
a Test Drive



LEXUS

BREATHTAKING CURVES

Developed and tuned by Lexus 'Master Drivers', the new RC F offers an unforgettable drive. Supreme cornering agility comes from the car and extremely rigid chassis, built using the latest adhesive and laser screw-welding technology. Multi-link rear and double wishbone front suspension combine with motorsport aerodynamics to deliver a world-class driving experience. A range of different drive modes and a Torque Vectoring Differential which is optional on RC F and standard on RC F Carbon, lets you tune the RC F to suit your mood, while our latest Sports VDIM (Vehicle Dynamics Integrated Management) ensures high-speed driving refinement and safety.



View
Offers



Watch
the Video



Find
a Dealer



Book
a Test Drive



LEXUS



PASSION FOR PERFORMANCE

Muscular and aggressive, the RC F features an extra-wide Lexus 'spindle grille' with 'F' motif mesh. Jewel-like, triple 'L' LED headlights are underscored by L-shaped LED daytime running lights for an unmistakable look. As on the LFA supercar, an active rear spoiler creates extra downforce at speeds above 50 mph, while quadruple exhaust outlets complete the powerful stance.

EXTRA-WIDE
'SPINDLE GRILLE'
AND AIR INTAKES, ACTIVE REAR
SPOILER FOR MORE DOWNFORCE,
ADVANCED UNDERBODY
AERODYNAMICS.

RC F CARBON

The RC F Carbon features lightweight components made using pioneering Lexus composite technology. Benefiting from carbon fibre moulding technology developed for our LFA supercar and IS F CCS-R racecar, the RC F Carbon model is 9.5 kilos lighter than the standard car, and boasts a raw carbon bonnet, roof and spoiler. Woven carbon fibre components create an attractive visual form, while an exclusive clear lacquer ensures excellent weather resistance. As well as reducing overall weight, the carbon package also lowers the RC F's centre-of-gravity by 3 mm and contributes to even sharper dynamic performance.

MATERIAL ADVANTAGE



POLE POSITION

Relax and feel confident around corners in the RC F's beautifully crafted high-back sports seats. Inspired by the latest innovative sportswear, they are manufactured using an integrated foaming technique for a supportive fit. The RC F's instruments represent a further development of the LFA's unique central dial - information shown includes a large tachometer, digital and analogue speed readouts, a Torque Vectoring Differential monitor (optional on RC F and standard on RC F Carbon), a G-Force meter and even a stopwatch. Soft-touch materials, a precision analogue timepiece and LED ambient lighting complete the impressive interior.

DRIVER-FOCUSED
COCKPIT, HIGH-BACK LEATHER
SPORTS SEATS,
LFA-STYLE CENTRAL INSTRUMENTS
WITH G-FORCE METER.





DRIVER HOSPITALITY

Enjoy Japanese hospitality through an 'Omotenashi' welcome. As you approach the RC F with the key in your pocket the car will greet you and both door handles will illuminate, unlocking when touched. The RC F is also the perfect place to enjoy the optional 17-speaker Mark Levinson® Premium Audio system. It delivers a peerless 7.1-channel digital home-theatre experience, enhanced by Clari-Fi™ that rebuilds sound lost in MP3 digital compression.

 View Offers

 Watch the Video

 Find a Dealer

 Book a Test Drive

 LEXUS



ONBOARD COMMUNICATION

7-inch multimedia display, intuitive touch pad access to Lexus Premium Navigation and Connected Services. Wherever you drive in Europe, you'll navigate easily in the RC F. The RC F's innovative new Touch Pad lets front seat occupants interact intuitively with the central 7-inch multimedia display. This also functions as a Reversing Camera for trouble-free reversing. Lexus Premium Navigation features vivid 3D graphics and can even generate a QR code on compatible smart phones, to help you reach your final destination on foot. The RC F is equipped with the latest Lexus Connected Services like Online Search, Google Street View®, Panoramio® and Connected Traffic (in conjunction with compatible smart phones).

View
Offers



Watch
the Video



Find
a Dealer



Book
a Test Drive



LEXUS

Equipped with Sports Vehicle Dynamics Integrated Management (VDIM) and 380mm Brembo ventilated disc brakes, the new RC F is engineered to help you avoid danger. Optional Pre-Crash Safety and Adaptive Cruise Control help you to maintain a safe distance between you and the car ahead (even if that vehicle slows down) and, if necessary, intervenes to minimise the impact of a crash. If an impact is unavoidable, you are protected by a strong passenger safety cell, eight airbags and stability traction control. Meanwhile, Blind Spot Monitor and Rear Cross Traffic Alert detect vehicles you may not have seen.

SUPERIOR PROTECTION



View
Offers



Watch
the Video



Find
a Dealer



Book
a Test Drive



LEXUS

IMPECCABLE FINISH

White gloved Lexus master craftsmen oversee production and inspect every RC F in a 'quiet room' before delivery. The new RC F is built at our award-winning Tahara plant by Lexus 'Takumi' craftsmen. With at least 25 years of experience, each is an expert at detecting the tiniest imperfections. You'll sense their amazing skill when you first touch the precision-machined aluminium audio controls or beautifully stitched leatherwork. Gleaming paintwork is painstakingly wet sanded by hand to ensure a perfect finish. Before a final test drive, the 'Takumi' craftsmen check each car for smooth running in a 'quiet room' using their highly trained ears and a sensitive microphone placed strategically in the cabin.





Developed on the world's toughest circuits, Chief Engineer Yukihiro Yaguchi and his team have created the RC F to be enjoyed by all motorsport enthusiasts, no matter what their level of expertise. Whether on the racetrack or open road, the car's driving dynamics can be modified instantly to meet your driving style.

Front suspension Featuring forged aluminium components, the double wishbone front suspension is lightweight and responsive. Innovative suspension geometry delivers excellent handling stability and ride comfort.

Rear suspension Straight-line and cornering stability are supplied by a multi-link rear suspension setup. A combination of high-tensile steel and die-cast/forged aluminium components keep weight low but ensure vibration-free precision.

Torque Vectoring Differential Designed to further heighten driving enjoyment, the RC F features a Torque Vectoring Differential with three operating modes: STANDARD, for a balance of agile performance and high-speed stability, SLALOM, for an emphasis on nimble response to steering inputs and TRACK, for consistent, stable cornering behaviour while circuit driving. The Torque Vectoring Differential is optional on RC F and standard on RC F Carbon.

Rigid chassis The foundation for the new RC F's outstanding handling is its high rigidity body. Numerous specialised manufacturing techniques further enhance strength, including body adhesives, laser-screw welding and multi-spot welding. The RC F is equipped with coil-sprung independent suspension systems front and rear, incorporating mono-tube gas dampers and stabiliser bars.

PERFORMANCE



1 / V8 engine Hand built and stethoscope tuned, this incredible 5.0-litre V8 engine develops 477 DIN hp and 530 Nm of torque. All moving parts are designed to provide increased maximum power at higher revs. Thrilling to hear, advanced sound engineering creates a deeply resonant tone up to 3000 rpm, and a higher-pitched roar as revolutions rise above 6000 rpm under hard acceleration.

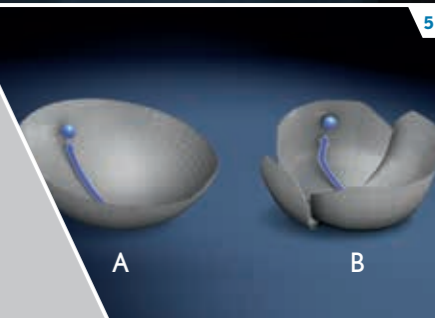
2 / 8-speed transmission The V8 engine delivers power via an 8-speed Sport Direct Shift sequential transmission with manual override. Select Manual mode and use shift paddles to enjoy rapid sports performance. When paddle downshifting (in just 0.2 seconds) you'll experience the unique sound of the throttle 'blipping' between gears.

3 / Drive Mode Select Vehicle performance can be fine-tuned using Drive Mode Select. ECO mode reduces emissions and conserves fuel while, for everyday driving, NORMAL provides an ideal balance of power, economy and ride comfort. For enhanced drivetrain responsiveness, simply switch to SPORT S or SPORT S+ mode.

4 / Advanced aerodynamics The new RC F has superb aerodynamics, thanks to details like a near-flat underbody and tiny winglets on the front door pillars. First seen on F1 racing cars, these winglets create air vortices that help pull the airstreams inwards to improve the way the car cuts through the air.

5 / Sports VDIM The RC F features a VDIM system that is designed to predict and take steps to help prevent a loss of traction even before it occurs by using a combination of throttle control, individual-wheel braking, and steering torque assistance. The Sports and Sports + VDIM mode setting adjusts the sensitivity of the Vehicle Skid Control and Traction Control systems, raising the threshold before the system intervenes, thus enabling to push the RC F to its limits.

A. With VDIM Dynamics control, systems work smoothly together. B. Without VDIM Dynamic control, systems work independently.



As well as having the latest Sports Vehicle Dynamics Integrated Management, the new RC F is equipped with 380mm Brembo brakes to help you avoid danger. Pioneering driver support systems include Lane Departure Alert, Automatic High Beam and optional Pre-Crash Safety and Adaptive Cruise Control. An incredibly strong passenger safety cell and eight airbags provide exceptional occupant protection.

Pre-Crash Safety & Adaptive Cruise Control (Optional)

Millimetre-wave radar and an on-board computer calculate collision risk ahead. If the risk is high, the driver is alerted by audible and visual warnings and brake pressure is increased. When a collision is deemed unavoidable, the brakes will be applied automatically as necessary and the front seatbelts tightened. Adaptive Cruise Control uses the same radar technology to maintain a set distance to the vehicle ahead.

Lane Departure Alert (Standard) will warn you if you inadvertently drift out of lane, with the use of a camera mounted behind the rear-view mirror.

Automatic High Beam (Standard) uses the same camera at night to automatically switch to low beam when it detects the lights of either an oncoming or preceding vehicle.



ADVANCED SAFETY



1 / Eight airbags RC F

occupant safety is provided by eight airbags. The driver and front passenger are protected by 2-stage head airbags, as well as knee and side airbags. Curtain shield airbags run the full length of both cabin sides. All seatbelts are also specified with pre-tensioners.

2 / Blind Spot Monitor Radar devices mounted in the rear bumper detect vehicles in adjacent lanes that are not visible in the door mirrors. If the driver is indicating to change lane and a vehicle enters the blind spot, Blind Spot Monitor instantly activates a warning signal in the relevant door mirror.

3 / Rear Cross Traffic Alert When reversing, for instance in a busy car park, Rear Cross Traffic Alert uses Blind Spot Monitor radar to identify vehicles approaching the difficult-to-see area behind the vehicle. When a vehicle is detected, the Rear Cross Traffic Alert function alerts you with a visual display in the door mirrors and a buzzer.



- 1 / Triple LED 'L' Beams / full LED daytime running lights** Jewel-like, triple 'L' LED headlights use the same light source for high and low beam, with the RC F's impressive aura enhanced by L-shaped thick-wall full LED daytime running lights.
- 2 / LED rear lights** The rear light cluster combines elegant LEDs arranged in Lexus signature 'L' form. Thick-wall moulding technology gives a crystal appearance, and a strikingly bold presence even when not illuminated.
- 3 / 19" forged alloys (RC F)** Three-dimensionally machined spokes give a sharp look and reflect the excellent dynamic performance of our latest 'F' model.
- 4 / 19" forged alloys (RC F Carbon)** This hand-polished wheel features Lexus 'L'-motif spokes that combine Takumi craftsmanship with advanced weight reduction technology.

EXTERIOR FEATURES



- 1 / Driver-focused cockpit** The new RC F's driver-focused cockpit will keep you perfectly relaxed and concentrated on the road or track ahead. Behind the beautifully crafted steering wheel the sumptuous front seats offer up to 10-way electric adjustments.
- Sports steering wheel** The RC F debuts a Lexus-first elliptical cross-section, thick grip steering wheel that offers greater control during performance driving. The placement, shape and operation of the wheel's paddle shifts have also been optimised for fast, accurate gear changes.
- 2 / Leather sports seats** standard on RC F. All-new high-back seats feature Lexus' integrated foaming, which gives a cossetting, highly supportive fit. This motorsport-inspired technology allows greater comfort and lateral support than is possible with conventional upholstery. The driver and front passengers can heat or ventilate their leather seats. This adds to the sense of luxury, especially in extreme weather conditions. Alcantara heated seats are standard on RC F Carbon.

INTERIOR FEATURES



1 / Lexus Premium Navigation

With vivid 3D graphics and many mapping options, the 7-inch screen is operated by Touch Pad or voice commands. The system can even generate a QR code on compatible smartphones to help you reach your final destination on foot.

2 / Reversing Camera

Engage reverse and the view behind the car is relayed to the Lexus Media Display. On-screen guides are also displayed to assist parking.

3 / Central digital instruments

The RC F's all-new instrument meters represent a further development of the LFA's switchable, driving mode-dependent central dial. Information includes a large, centrally-mounted tachometer that alters according to driving mode. There are also digital and analogue speed readouts, a Torque Vectoring Differential monitor (available when equipped with a Torque Vectoring Differential), a G-Force meter, oil and water temperature gauges, mileage information and even a stopwatch.



1 / Mark Levinson®

The RC F's (optional) 17-speaker, 835 Watt Mark Levinson® Premium Surround system is tailored to the acoustic properties of the cabin. It delivers a peerless 7.1-channel digital home-theatre experience, enhanced by Clari-Fi™ that rebuilds sound lost in MP3 digital compression.

2 / Digital connectivity

Multiple digital applications can be synchronised to the Lexus Media Display. For example, simply download your smartphone's address book and then scroll through it. With compatible smart phones.

3 / Lexus Hotspot

Available as an optional accessory, Lexus Hotspot uses a special automotive design enabling connectivity for up to 5 WiFi devices such as mobile phones and tablets. It wires into the car electrics, has a high-speed antenna and uses your choice of SIM card.

4 / Leading edge multimedia

The new RC F has the very latest Lexus multimedia technology. This features Lexus Premium Navigation and Lexus Connected Services like Google Street View®. It can even help you calculate the most ecological route. For extra convenience you can even forward a route from your laptop or tablet to the RC F's navigation system.

5 / The Touch Pad

with Remote Touch Interface lets front seat occupants interact intuitively with the central 7-inch multimedia display. Ergonomically designed, it is as easy to use as a smartphone or tablet.

AUDIO AND MULTIMEDIA

MAXIMUM OUTPUT

DIN hp / kW 477 / 351

ENGINECapacity (cm³) / Cylinders / Valves 4969 / V8 / 32

Valve mechanism DOHC, with Dual VVT-i

Fuel type / Octane rating 95 octane or +

Max. power (DIN hp / kW @ rpm) 477 / 351 @ 7100

Max. torque (Nm @ rpm) 530 @ 4800 - 5600

TRANSMISSION

Driven wheels Rear-wheel drive

Transmission 8-speed Sport Direct Shift automatic transmission

PERFORMANCEMax. speed (mph) 168¹

0-62 mph (s) 4.5

CO₂ EMISSIONS* (g/km)

Emissions level Euro 6

Combined 251

FUEL CONSUMPTION* mpg (l/100km)

Urban 17.5 (16.1)

Extra-urban 36.2 (7.8)

Combined 26.2 (10.8)

BRAKES

Front: Ventilated discs (mm) 380/34 Brembo

Rear: Ventilated discs (mm) 345/28 Brembo

SUSPENSION

Front Double wishbone

Rear Multi-link

STEERING

Type Rack & Pinion with EPS (Electric Power Steering)

Turns (lock to lock) 2.84

Minimum turning radius - Tyre (m) 5.4

Minimum turning radius - Body (m) 5.7

WEIGHTS (kg)

Gross vehicle weight 2250

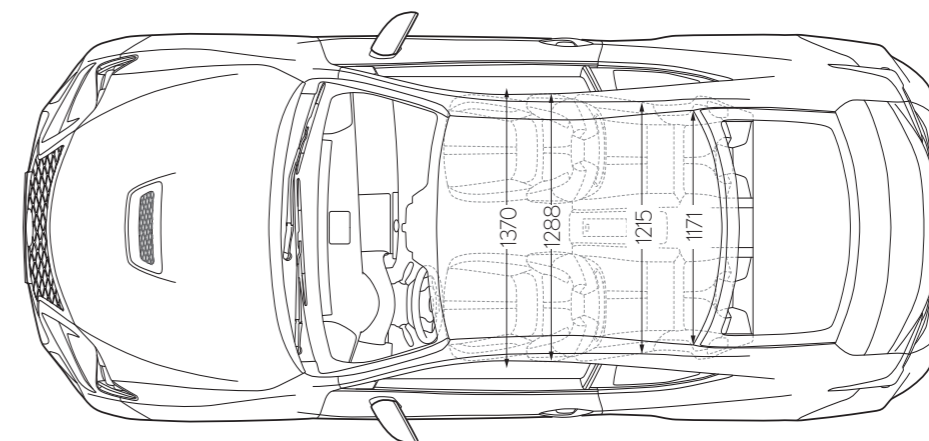
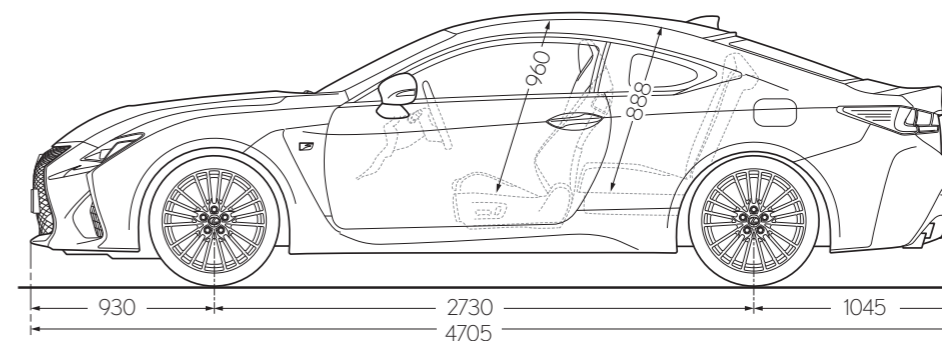
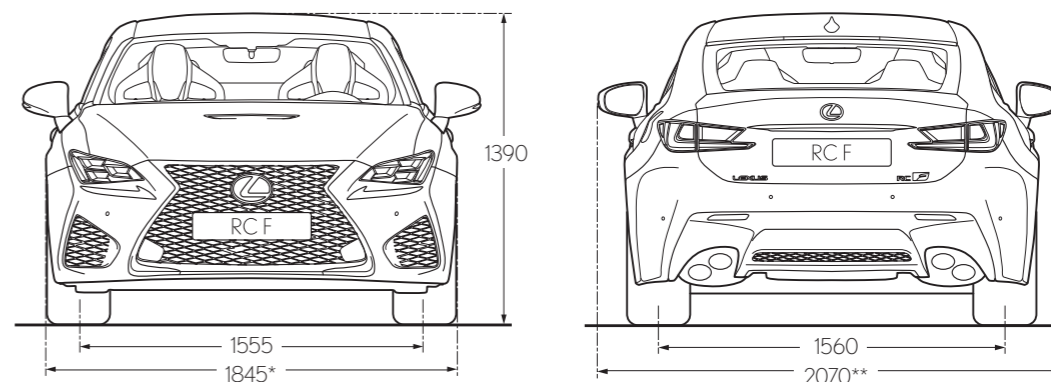
Kerb weight (min. - max.) 1765 - 1845

DRAG COEFFICIENT

Cd value 0.33

CAPACITIES (l)

Fuel tank 66

Luggage compartment 366¹¹Based on manufacturer's own data.

* All fuel consumption (mpg) and emissions (CO₂) figures quoted are sourced from official EU-regulated tests. These are provided for comparability purposes only and may not reflect your actual driving experience. Fuel consumption and emissions vary significantly depending on driving style, conditions, vehicle weight and speed. In order to allow consumers to compare and make informed choice between vehicles, there is a European Commission Standard (93/116/EC and 692/2008) to measure fuel consumption. For further information about the tests performed, please visit <http://www.dft.gov.uk/vca/fcb/faqs-fuel-consumptio.asp> Please note: further Technical Data, including any updates, can be found at www.lexus.co.uk

Please note: the dimensions illustrated above are measured in millimetres.

* Width without mirrors

** Width with mirrors

TECHNICAL DATA

ACTIVE SAFETY AND DRIVING DYNAMICS

- Active brake lights
- Auto Location Tyre Pressure Warning System (AL-TPWS)
- Braking, stability, steering and traction systems¹
 - ABS / BAS / EBD / EPS / TRC / VSC
- Drive Mode Select
 - ECO / NORMAL / SPORT / SPORT S+
- Hill-start Assist Control (HAC)
- Vehicle Dynamics Integrated Management (VDIM) with Sport Mode

PASSIVE SAFETY

- 8 airbags in total
 - cabin sides; full-length curtain shield
 - driver and front passenger; head, side and knee
- Airbag cut-off switch, front passenger
- Audible and visual front seatbelts reminder
- ISOFIX attachment, rear seats
- Seatbelt pre-tensioners, on all four seats

ADVANCED SAFETY & DRIVER ASSIST

- Lane Departure Alert (LDA)
- Automatic High Beam (AHB)
- Blind Spot Monitor (BSM) & Rear Cross Traffic Alert (RCTA)

SECURITY

- Anti-theft system
 - immobiliser / intrusion sensor / alarm
- Auto door locking
- Double door lock

AUDIO, COMMUNICATION AND INFORMATION

- 4.2" colour multi-information display
 - G-sensor
 - lap timer function
 - torque distribution display
- Active Sound Control
- Analogue clock with white LED illumination
- Bluetooth® mobile phone and audio connectivity
- Lexus Media Display
 - 7" display screen operated by remote touch pad
 - DAB Radio with AM/FM tuner
 - 10-speaker audio system with Gracenote®
- Optitron instrumentation
- Steering wheel mounted controls
 - audio / display / phone / voice
- Two USB ports and AUX socket
- Lexus Premium Navigation

INTERIOR COMFORT AND CONVENIENCE

- 12 V socket
- Cruise control
- Drilled sports pedals and footrest
- Electrically operated windows
- Electronic climate control
 - 2-zone
- Front centre armrest and storage box
- Front and rear seat headrests, F logo embossed
- Front sports seats
 - Driver 10-way electrically adjustable
 - Passenger 8-way adjustable
 - Driver 2-way lumbar
- Illuminated entry system
- Leather trimmed gearshift lever
- Memory function for drivers seat, door mirrors and steering wheel

- Push start button
- Rain sensing windscreen wipers
- Rear-view mirror, electro chromatic (auto-dimming)
- Rear centre console, fixed²
 - armrest and through-load facility
- Sports perforated leather steering wheel, F logo embossed
 - electrically multi-adjustable
 - paddle shift controls
- Tyre repair kit
- Reversing Camera

EXTERIOR

- Door mirrors
 - electrically adjustable and heated
 - electrically auto-folding
 - electro chromatic (auto-dimming)
 - integral turn signal indicators
- F logos, side and rear
- Laser-brazed roof structure
- Light Emitting Diode (LED)
 - daytime running lights
 - L-shaped headlights with auto-levelling
 - rear combination lights
- Parking assist sensors, front and rear
- Electrically retractable rear spoiler
- Ultra Violet (UV) and heat insulating tinted glass
- Water-repellent glass, front door windows

FEATURES

19" forged aluminium wheels, 10-twin-spoke design 255/35 R19 (front) and 275/35 R19 (rear) tyres

19" forged aluminium wheels, L-shaped motif design, Polished 255/35 R19 (front) and 275/35 R19 (rear) tyres

Glass sunroof, electric tilt/slide

Carbon Roof, Hood and Rear Spoiler

Alcantara, P 8 & D 10 way power adjust, heated front seats.

Driver's seat with lumbar & memory

Semi-aniline leather, P 8 & D 10 way power adjust, heated & ventilated front seats.

Driver's seat with lumbar & memory

Mark Levinson® sound system with 17 speakers, 1 DVD & DAB

Torque Vectoring Differential (TVD)

Metallic paint

Pre-Crash Safety (PCS) & Adaptive Cruise Control (ACC)

	RCF	RCF CARBON
19" forged aluminium wheels, 10-twin-spoke design 255/35 R19 (front) and 275/35 R19 (rear) tyres	●	○
19" forged aluminium wheels, L-shaped motif design, Polished 255/35 R19 (front) and 275/35 R19 (rear) tyres	○	●
Glass sunroof, electric tilt/slide	○	○
Carbon Roof, Hood and Rear Spoiler	○	●
Alcantara, P 8 & D 10 way power adjust, heated front seats.	○	●
Driver's seat with lumbar & memory	●	●
Semi-aniline leather, P 8 & D 10 way power adjust, heated & ventilated front seats.	○	○
Driver's seat with lumbar & memory	○	○
Mark Levinson® sound system with 17 speakers, 1 DVD & DAB	○	○
Torque Vectoring Differential (TVD)	○	○
Metallic paint	○	○
Pre-Crash Safety (PCS) & Adaptive Cruise Control (ACC)	○	○

● Standard ○ Optional

STANDARD EQUIPMENT FOR ALL GRADES

OPTIONAL EQUIPMENT

¹ABS = Anti-lock Braking System / BAS = Brake Assist System / EBD = Electronic Brake-force Distribution / EPS = Electric Power Steering / TRC = Traction Control / VSC = Vehicle Stability Control

²Four seat capacity



1 / Rubber floor mats The ultimate solution for your car's carpets, protecting them from muddy or wet shoes and the ingress of dirt, sand or dust. The driver's mat has dual safety fixings to hold it firmly in place.

Illuminated scuff plates create an immediate impression of style and add extra practicality for those dark nights

2 / Vertical cargo net Enjoy added practicality and a tidy boot. The net clips on to factory-fitted hooks on the side of the luggage compartment and has two pockets for storing smaller items, while keeping them easily accessible.

3 / Horizontal cargo net A convenient solution to the distraction of luggage sliding around in the boot. The net attaches to factory-fitted hooks in the boot space and is ideal for securing a bag or briefcase.



European Safety Pack

A comprehensive safety pack for European travel, comprising:

- High visibility safety jacket (x4)
- Breathalyser (x2)
- Warning triangle (x2)
- First aid kit
- Headlamp converters
- GB sticker
- Carry case

Tracker The superb TRACKER system offers you a choice of stolen vehicle tracking solutions.



Supagard care products Naturally you want to maintain your Lexus in pristine condition, both inside and out, and Supagard is the specialist treatment we recommend to achieve this. A comprehensive protection package, the Supagard range encompasses Paint Sealant, Fabric Protection, Leather Care, Carpet Protection and Key Care.

ROADSIDE ASSISTANCE

We want to ensure that you enjoy driving your Lexus anywhere in Europe with complete peace of mind. This is why we provide you with Lexus Roadside Assistance 24 hours a day, 365 days a year in both the UK and Europe*. Your membership gives you personal cover. That means you are entitled to the full range of benefits and services as the driver or passenger of any vehicle, not just while driving your Lexus. Your partner is also eligible for the same cover provided you both reside at the same address.

To make use of this added bonus, please register your partner with Lexus Roadside Assistance on 0800 169 0393.

* Lexus Roadside Assistance is provided for the first three years of owning the car

THREE-YEAR COMPREHENSIVE WARRANTY

Any defect that is attributable to a manufacturing or assembly defect under normal use is covered by your warranty. This provision applies for a period of three years or 60,000 miles, whichever comes first, with no mileage limit for the first year. In the event of a breakdown immobilising your Lexus, the cost of recovering it to the nearest Lexus Centre is also covered if that breakdown is the result of a warrantable defect.

THREE-YEAR SURFACE RUST AND PAINTWORK WARRANTY

The three-year, unlimited mileage warranty covers surface rust and paint defects on any painted body panels due to a fault in material or workmanship.

12-YEAR CORROSION PERFORMANCE WARRANTY

A 12-year unlimited mileage warranty covers the vehicle against rust perforation through any sheet metal body panel (subject to certain exclusions specified in the warranty booklet) occurring as a result of a manufacturing or assembly defect in the vehicle. The warranty booklet supplied with each new vehicle gives full details. This warranty is also transferable to subsequent owners.

ACCESSORIES

Please consult your local Lexus Centre for the full specification of approved Lexus Accessory products.

LEXUSCARE®

For us, caring for your Lexus is the equivalent of caring for you, our customer. Each member of the Lexus team has honed their skills and knowledge to ensure that you experience the highest levels of care. This extends to every aspect of our service. Wherever possible we will provide a replacement car while yours is being maintained and we aim to ensure that any time you spend with us in the Lexus Lounge is relaxing and enjoyable. Read a paper, watch television or even work on your laptop. Excellence of service is more than just a goal, it's our passion. And, through the LexusCare® programme, that passion endures long after your car has left the showroom.

LEXUS FINANCIAL SERVICES

Lexus Financial Services offers an extensive range of finance products, including Lexus Connect - Contract Purchase and Lexus Connect - Contract Hire, products that offer a combination of benefits designed to make acquiring a Lexus as easy as driving one. Whether you are a private motorist looking for the most flexible, affordable options or a business wishing to boost cash flow and tax efficiency, our finance products provide attractive, refined solutions.

Your Lexus Centre will be happy to discuss the full range of financing options available and create a quotation that is right for you. When you choose to go ahead your Lexus Centre will arrange your application. There are no lengthy forms to fill in and immediate acceptance is possible in many cases. Delivering complete customer satisfaction underpins everything we do at Lexus, so once you commence an agreement with us, you can rest assured that our team of UK-based customer service representatives are only a phone call away if you have any queries. Finance subject to status to over-18s. Terms and conditions apply. Indemnities may be required.

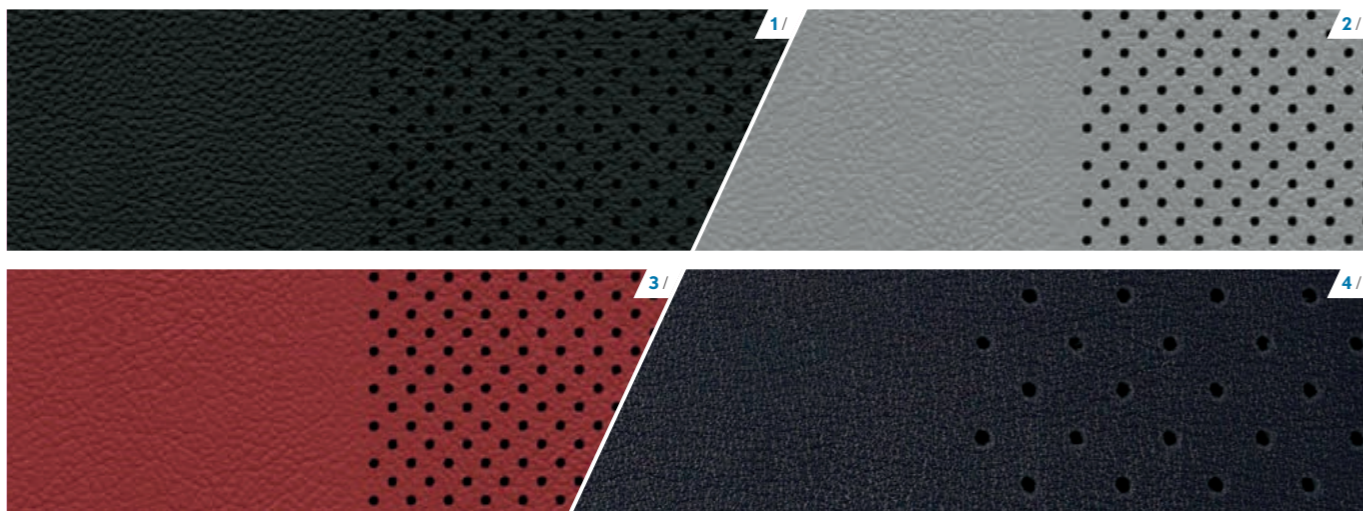
WORLD-LEADING QUALITY

Since its launch, Lexus has been in the vanguard of what is achievable in the luxury automobile category. Our long list of awards and quality records is proof of this achievement: in addition to awards for best luxury car, best chauffeur car, best security and being rated best manufacturer, over the past decade Lexus has continued to lead the way in customer satisfaction and has been awarded the highest position in several UK vehicle ownership satisfaction studies.



Black Alcantara trim with Carbon inlays (Carbon)

Black Semi-Aniline leather with Metallic Weave, Silver inlays

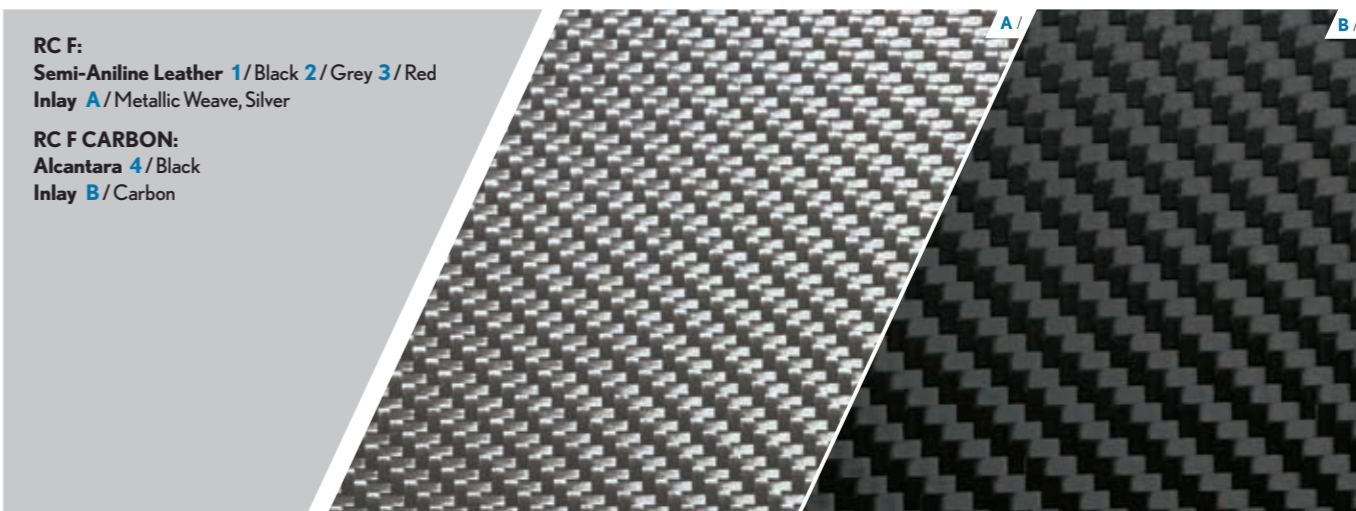


INTERIOR COMBINATIONS



Grey Semi-Aniline leather

Red Semi-Aniline leather



RC F:
 Semi-Aniline Leather 1/Black 2/Grey 3/Red
 Inlay A/Metallic Weave, Silver

RC F CARBON:
 Alcantara 4/Black
 Inlay B/Carbon



F SPORT WHITE (083)



SONIC SILVER (1J2)



MERCURY GREY (1H9)



SOLAR FLARE (4W7)



VELVET BLACK* (212)



CELESTIAL BLACK (217)



AZURE BLUE (8X1)



SONIC RED (3T5)

EXTERIOR COLOURS

*Solid colour
Please note: due to printing variances, actual paintwork colours may vary slightly from those illustrated.
The RC F Carbon boasts a raw carbon bonnet, roof and spoiler.



View
Offers



Watch
the Video



Find
a Dealer



Book
a Test Drive



EXPERIENCE THE NEW RC F

INFORMATION CONTAINED IN THIS BROCHURE

Accuracy and Specification

All information contained in this brochure was correct at time of going to print. Please note that while every effort is made to reproduce accurate information, we reserve the right to change specifications, equipment and availability without prior notice. Images shown in this brochure may not be of UK models (for example, they may show left hand drive vehicles) and may illustrate equipment that is only available on selected grades. Therefore, this brochure cannot be regarded as infallible and, as such, does not constitute an offer for sale of any particular vehicle shown.

Fuel consumption & emissions data

All mpg, mph and CO₂ figures quoted in this brochure are sourced from official EU-regulated test results. These are provided for comparability purposes only and may not reflect your actual driving experience. Fuel consumption and emissions vary considerably depending upon driving style, conditions, vehicle load and speed.

In order to allow consumers to compare and make an informed choice between one vehicle and another, there is a European Commission standard (93/116/EC and 692/2008) to measure fuel consumption. This common standard must be adhered to by all manufacturers selling motor vehicles in the EU and is the basis for all published fuel consumption figures. For information on how fuel consumption tests are performed please visit: <http://www.dft.gov.uk/vca/fcb/faqs-fuel-consumptio.asp>.

Safe driving

Lexus is committed to promoting safe and responsible driving at all times. None of the images contained in this brochure should be taken to promote any unsafe driving practice. All sound, entertainment and navigation accessories that may be included in our vehicles should always be used alongside legal and attentive driving. Additionally, any driver assistance and other safety features included in our vehicles are not designed to substitute safe and careful driving.

End-of-life vehicles

Taking care of the environment is a priority for Lexus. We strive to minimise the environmental impact of our vehicles throughout their life cycle – from design, production, distribution, sales and service to end-of-life. For more detailed information on environmental performance please visit www.lexus.co.uk.

Arranging a test drive

We hope to have illustrated in this brochure that Lexus creates vehicles of refinement, innovation and style. But only behind the wheel of one of our models can you truly experience the pleasure, performance and seamless anticipation of your needs as a driver at first hand. Simply consult your local Lexus Centre to arrange a test drive.

Further information & contact us

For further information, to find out more about owning a Lexus or simply to locate your local Lexus Centre, please visit our website, www.lexus.co.uk, or call 0845 278 8888.

About Lexus

Lexus is a division of Toyota (GB) PLC. Toyota (GB) PLC is a company registered in England & Wales with company number 0916634 and with its registered office at Great Burgh, Burgh Heath, Epsom, Surrey KT18 5UX.

Toyota (GB) PLC is an introducer appointed representative of Toyota Insurance Management Limited and Toyota Financial Services (UK) PLC, both of which are authorised and regulated by the Financial Conduct Authority. Toyota (GB) PLC is a member of the Society of Motor Manufacturers & Traders.

