



THE FULL HYBRID
LEXUS RX 450h



FORWARD LIVING



'As a premium brand always striving to be ahead of its time, yet in tune with society, Lexus takes environmental performance very seriously. Since we launched the first luxury hybrid utility in 2005, Lexus Hybrid Drive has undergone constant development. Drawing on the pioneering spirit of the first-generation model, the RX 450h demonstrates that Lexus is seriously committed to creating a new form of sustainable luxury and values.'

TAKAYUKI KATSUDA,
Chief Engineer of the RX 450h



THE PIONEERING FULL HYBRID RX 450h

In 1998, Lexus introduced the world's first luxury utility vehicle. Until then, the idea of a four-wheel drive with the handling, performance, refinement and ride of a luxury saloon was just that - an idea. Lexus made it reality.

In 2005, the RX 400h was unveiled and standards were redefined once more. Powered by the new and revolutionary Lexus Hybrid Drive system, combining a petrol engine with two electric motors, it offered greatly reduced emissions, improved fuel efficiency as well as an entirely new experience of smooth high power. It was a breakthrough that instantly met the needs of progressively-minded individuals all over the world - active and engaged people who wanted to enjoy life while, at the same time, going past convention to find deeper value.

Four years later, the next-generation full hybrid RX 450h was launched. And the offering is more relevant and compelling than ever. Built at the award-winning Lexus 'Eco Factory' at Kyushu in Japan, the RX 450h features second-generation Lexus Hybrid Drive technology, ensuring seamless power, even more impressive fuel efficiency and emissions levels unrivalled by any other vehicle in its class.

It's all captured in a design that expresses versatility, elegance and alert, responsive dynamism. It's the promise of a deeply satisfying experience. On many levels.



SECOND-GENERATION LEXUS HYBRID DRIVE

The full hybrid RX 450h takes another important step towards minimising environmental impact and maximising driving pleasure thanks to second-generation Lexus Hybrid Drive technology. By combining a 3.5-litre V6 Atkinson Cycle petrol engine with two high-output electric motors and an advanced compact battery, the RX 450h delivers the power and acceleration you would expect from a much larger engine and the emissions of a compact four-cylinder car. Maximum combined output is 299 DIN hp (220kW) while combined CO₂ emissions are just 145g per kilometre. This remarkable CO₂ figure means the RX 450h has a Benefit-In-Kind tax rate of only 15 per cent (2010/11).

The RX 450h delivers these all-round peaks because its full hybrid technology provides optimum power at all times. It even offers, in certain conditions, true zero emissions* at the exhaust capability. Thanks to its powerful front and rear electric motors, the RX can operate in Electric Vehicle (EV) mode for emission-free driving at low speed over short distances.

* At point of driving, dependent on speed, distance and conditions.

Performance

Max. system output:	299 DIN hp (220kW)
Acceleration:	0-62mph in 7.8 seconds
Combined fuel consumption:	44.8mpg (6.3 l/100km)
Combined CO ₂ emissions:	145g/km
BIK tax rate:	15% (2010/11)

RX 450h: INSIDE LEXUS HYBRID DRIVE

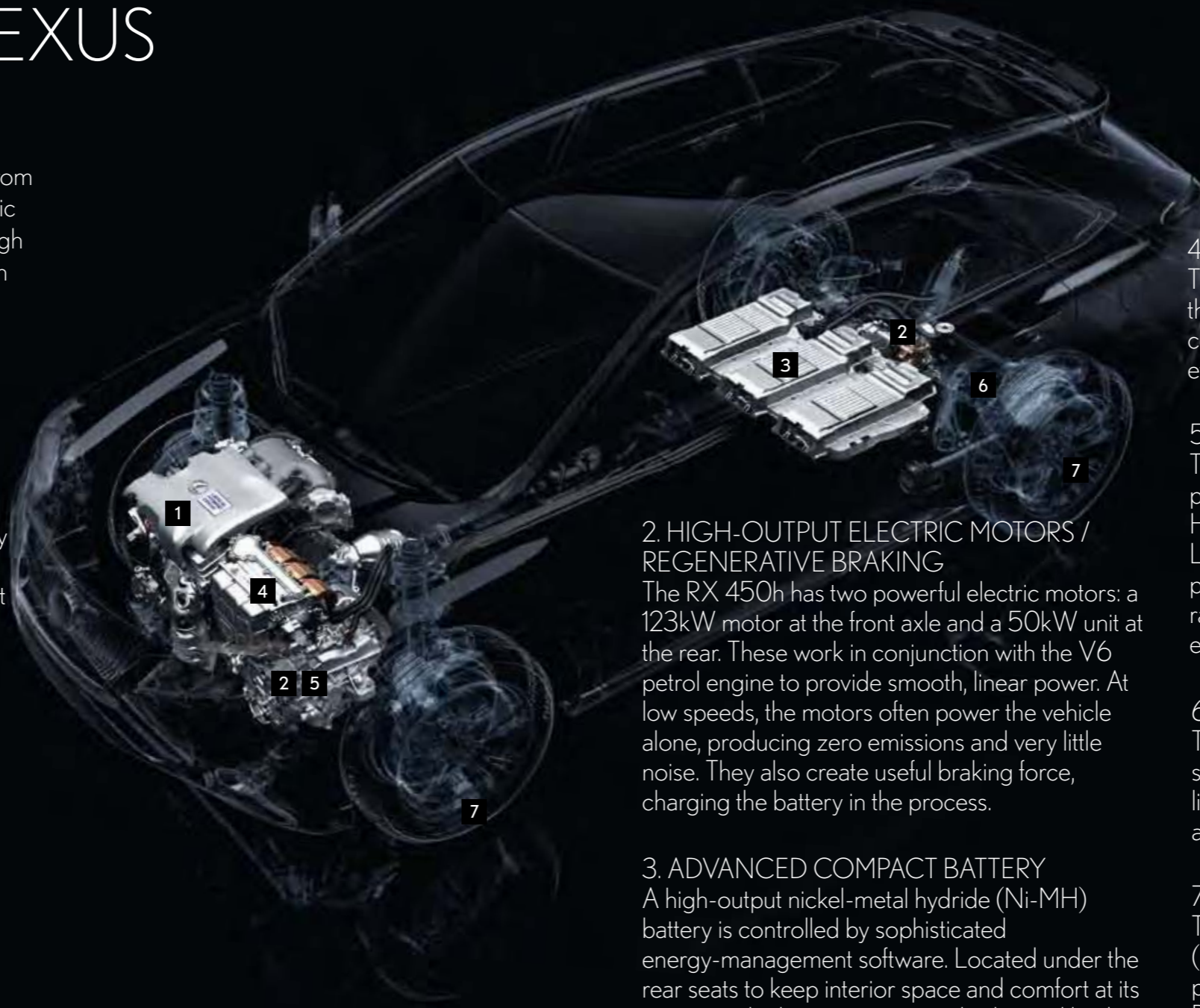
The RX 450h draws its seamless and efficient power from a 3.5-litre V6 petrol engine and two high-output electric motors. It's all intelligently orchestrated by a breakthrough Power Control Unit and the smooth hybrid transmission

1. 3.5-LITRE V6 ENGINE

The new-generation RX 450h is fitted with an advanced 3.5-litre V6 Atkinson Cycle petrol engine. This cycle actually generates less power than those used in conventional engines and is normally applied when economy and reliability are the main priorities. The combustion process can be likened to somebody taking a quick, deep breath and then breathing out very slowly. The choice of engine is ideal for the RX hybrid because the electric motors – providing 123kW in front and 50kW in the rear – deliver more than enough support for exceptional performance. Combined with the motors, the engine contributes to a maximum system output of 299 DIN hp (220kW). It also silently shuts down when not required to ensure the most efficient performance.

An innovative cooled Exhaust Gas Recirculation (EGR) system is fitted to the new V6. Depending on running conditions, a precise amount of exhaust gas is introduced into the engine's intake to decrease pumping losses (how hard the engine has to work to draw in the necessary fuel/air mix) and improve combustion.

* At point of driving, dependent on speed, distance and conditions.



2. HIGH-OUTPUT ELECTRIC MOTORS / REGENERATIVE BRAKING

The RX 450h has two powerful electric motors: a 123kW motor at the front axle and a 50kW unit at the rear. These work in conjunction with the V6 petrol engine to provide smooth, linear power. At low speeds, the motors often power the vehicle alone, producing zero emissions and very little noise. They also create useful braking force, charging the battery in the process.

3. ADVANCED COMPACT BATTERY

A high-output nickel-metal hydride (Ni-MH) battery is controlled by sophisticated energy-management software. Located under the rear seats to keep interior space and comfort at its optimum, the battery is constantly charged by the hybrid system and requires no external input.

4. POWER CONTROL UNIT

The groundbreaking Power Control Unit (PCU) is the brain of Lexus Hybrid Drive, smoothly controlling the allocation of power to ensure total efficiency at all times.

5. HYBRID TRANSMISSION

The front electric motor, generator and power split planetary gear mechanism are all housed in the Hybrid Transmission. Here, the two motive forces of Lexus Hybrid Drive – electrical and mechanical power – are combined using infinitely variable gear ratios, which means infinitely smooth progress for everyone on board.

6. E-FOUR

The RX 450h is fitted with a four-wheel-drive system called E-FOUR. A compact and extremely light 50kW electric motor on the rear axle delivers almost instant torque whenever required.

7. ELECTRONICALLY CONTROLLED BRAKING

The pioneering Electronically Controlled Braking (ECB) system not only improves overall braking performance, but also facilitates Regenerative Braking, a positive side-effect being the reduction of pad and disc wear.

RX 450h: HYBRID INTELLIGENCE

Second-generation Lexus Hybrid Drive technology offers a number of advanced new control features, such as Electric Vehicle (EV) mode for 'zero emissions*' driving and ECO mode for reducing environmental impact



ELECTRIC VEHICLE MODE

The driver can select Electric Vehicle (EV) mode using the multi-information switch on the steering wheel. In EV, power is drawn from the two electric motors for an almost silent drive with zero emissions*.

ECO MODE

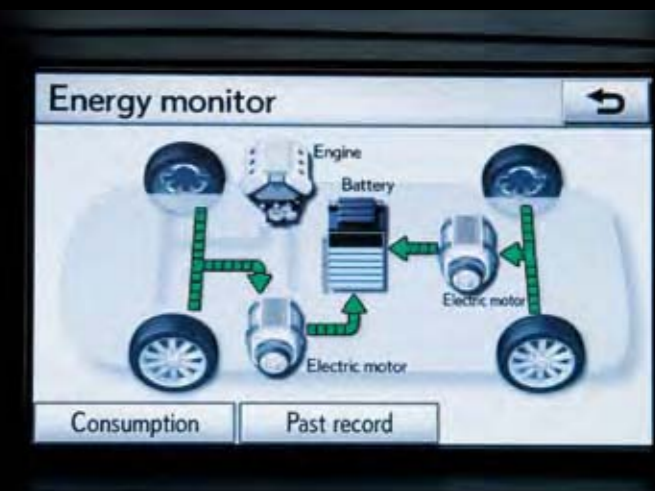
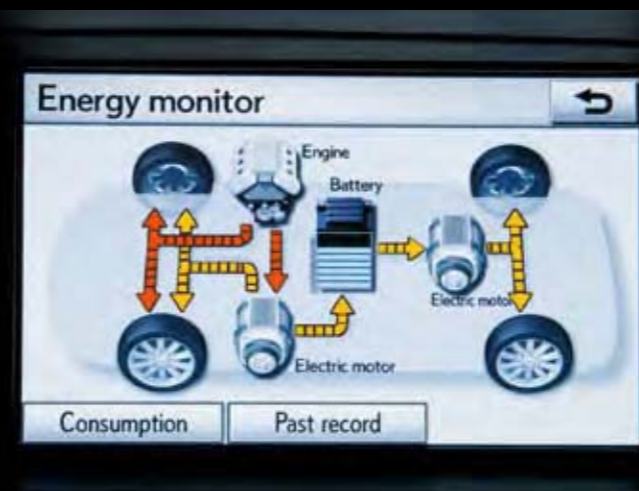
The driver can also activate ECO mode, which moderates throttle control and the air conditioning to reduce both emissions and fuel consumption.

SNOW MODE

When starting on a snowy or slippery road, activating SNOW mode instructs Lexus Hybrid Drive to adjust traction control responses and torque to all four wheels for confident, trouble-free progress.

AI-SHIFT CONTROL / SEQUENTIAL SHIFT

Another first for Lexus, Artificial Intelligence-SHIFT (AI-SHIFT) sets a new benchmark in driving comfort. This system assesses road conditions and the driver's intentions to ensure optimum shift patterns at all times.



HOW DOES LEXUS HYBRID DRIVE WORK?

The drive in the RX 450h may be smooth, and often silent, but there is a great deal of seamlessly efficient work going on behind the scenes. You can, in fact, see exactly what's happening through informative power-flow animations on the central eight-inch LCD colour display screen. The hybrid system is orchestrated by an advanced Power Control Unit (PCU) which constantly optimises power distribution. For example, when a strong surge of power is required, the PCU combines both electric and petrol power.

Lexus Hybrid Drive also incorporates Regenerative Braking. Usually, the kinetic energy created by braking is lost as heat. This system captures it and uses it to charge the battery. Braking force through the electric motors is also used as a valuable energy source. Other efficiency gains are made when Lexus Hybrid Drive identifies opportunities to switch off the engine when the vehicle is coasting or descending a hill. At lower speeds - in city traffic, for example - power may come solely from the electric motors, for near-silent progress free of all emissions* - not only CO₂ but also NO_x and particulates.

* At point of driving, dependent on speed, distance and conditions.

THE FLEXIBILITY OF FULL HYBRID



The Lexus RX 450h is a full hybrid. That means it has the flexibility to run at the precise optimum for all driving conditions. It will for instance operate on electric-only or petrol-only power when it makes practical sense to do so. And it will be powered by a combination of both sources to provide peaks of both efficiency and performance whenever required.

Two other systems you may have heard about are mild and micro hybrids. A mild hybrid is simpler and cheaper to produce than a full hybrid system, but it is less versatile and the fuel savings are more modest. Parallel mild hybrids have a less powerful electric motor between the engine and the gearbox to provide extra torque, but it is rarely the sole source of power. There are several mild hybrids in development and production but fuel efficiency is compromised and they use conventional transmissions that add weight and complexity.

A third type, the micro hybrid, is a hybrid in name only and is simply an engine start-stop system.



THE SHAPE OF TOMORROW



'Look closer at the RX 450h and, slowly, intriguing design elements will reveal themselves. It's a uniquely beautiful vehicle, full of contrasts - not only in the detailing, but also in the way lines and surfaces flow through the vehicle. The RX 450h has been designed using our L-finesse creative language. At Lexus, *leading edge* means using the most advanced technology to make the driving experience as luxurious as possible. However, technology would be nothing without exquisite quality - hence the crucial complement of *finesse*'

SIMON HUMPHRIES

Group Manager, Global Design Management Division

Contemporary Japanese design always strives for the purest possible expression. Reducing a complex form to its most 'pure' state allows Lexus designers to express power with great subtlety, indeed almost subliminally.

With its generous proportions, the RX 450h assumes an elegant yet reassuringly broad stance. And yet, even at rest, it exudes an unmistakable aura of dynamism. The front grille is set low, creating a purposeful look, while the headlights rise and dramatically sweep into the side profile. Here, the chrome window mouldings describe a graceful concave line, with characteristic Lexus arrowheads at the front and rear. Finished with absolute precision, such details reflect the world-class quality of the RX 450h.

A DYNAMIC DRIVE

The RX 450h exemplifies the power of paradox resolution. It's a large premium luxury utility with the agility of a sports saloon; it's fun to drive, yet supremely comfortable; it's refined when driving around town, yet engagingly precise along fast winding roads; and it's elegantly poised, yet exceptionally responsive.

This vehicle is also remarkably aerodynamic, thanks to the hundreds of hours it spent in wind tunnels. A smoother body reduces wind resistance, which, in turn, lowers fuel consumption and emissions. It means quietness and greater stability too.

Every possible detail was considered to achieve the RX 450h's drag coefficient of just 0.32. Along with scrupulously minimised panel gaps, features include a large undercover to improve airflow beneath the vehicle and door mirrors designed to control turbulence around the front pillars. And, with optional air suspension fitted, the ride height is automatically lowered at higher speeds.

Aerodynamic strength also equates to contemporary style, as you can see with the rear spoiler. While it was developed primarily to lower wind resistance, it was also sculpted with a clear focus on aesthetic value. Closer examination reveals a concealed rear wiper underneath the spoiler and a high-mounted integrated brake light, while a built-in radio antenna does away with the need for a conventional aerial.

ELECTRIC POWER STEERING

The new Electric Power Steering (EPS) system is progressive, responsive and precise. EPS automatically adjusts steering feel according to vehicle speed to improve handling and stability. As you accelerate, for instance, steering becomes progressively more solid and secure. EPS is also more fuel-efficient than conventional hydraulic steering systems.

NEW DOUBLE-WISHBONE REAR SUSPENSION

An all-new trailing double-wishbone rear suspension set-up delivers outstanding road holding, sports saloon-like cornering and superb straight-line stability. More complex to build than strut-based alternatives, double-wishbone suspension is often used in racing cars. And, thanks to its compactness, it encroaches far less into the luggage compartment.

ELECTRONICALLY CONTROLLED AIR SUSPENSION

Optional electronically controlled air suspension maintains a consistent vehicle height regardless of the number of people or the amount of luggage on board. At high speeds, the vehicle will automatically lower itself to reduce wind resistance and ensure driving stability. And a touch of a button can either lower the RX by 30mm for easier loading or raise it to make it easier to drive over rough ground.



STYLISH HOSPITALITY



A highly refined sense of hospitality has always been extremely important in Japanese culture. Reflecting this, the RX 450h is designed to make a warm and lasting impression on both driver and passengers. One example of this courtesy can be seen when a driver approaches the vehicle at night. Thanks to a special electronic Smart key, the RX recognises that the driver is approaching and activates a puddle light for safe and secure visibility.

Your first point of contact with the RX will be the door handle, with its elegantly sculpted surface subtly twisting outwards from the front to the rear. Touch it lightly and the door will unlock thanks to the presence of the Smart key in your pocket or bag. Enter the RX 450h and the instrument panel lights up to welcome you, while soft ambient lights illuminate key areas such as the footwell, start button and gearshift. An automated system also slides back the driver's seat by 50mm and adjusts the steering wheel for effortless access.

Sumptuous leather seating is standard on SE and SE-L grades, with the highest quality semi-aniline leather standard on SE-L and SE-L Premier grades. Extended buffing and pressing guarantees the smoothest, most even leather, while ergonomic design provides comfort and support for all physiques. The leather-covered steering wheel is precision-stitched by machine and then finished by a master craftsman at the Lexus Kyushu plant.





NEW DUAL-ZONE INTERIOR

Once seated, the driver will soon notice how the RX 450h enhances both relaxation and concentration, thanks to its advanced dual-zone interior. This is designed to reduce the information overload you can experience in some vehicles by promoting simplicity, comfort and focus.

The centrepiece of the 'display' zone is an eight-inch colour monitor recessed into the dashboard for optimum visibility. A crisp white LED multi-information display in the central panel ensures exceptional clarity, while the Head-Up Display (HUD), standard on SE-L Premier, projects key data onto the lower windscreen. To ensure maximum effectiveness, HUD was tested extensively in many different conditions, including on the snow-covered roads of Hokkaido in northern Japan.

The 'operation zone' is where the driver interacts with the RX 450h, below eye level, via the multi-information switch on the steering wheel, the control panel or the optional Remote Touch controller. It provides easy access to, and control of, a host of functions.



REMOTE TOUCH INTUITION



The Remote Touch system revolutionises the way drivers interact with the RX 450h. Ergonomically designed to reduce eye movement, Remote Touch allows the driver and front seat passenger to intuitively operate many of the vehicle's advanced features, such as the entertainment, climate and navigation systems, using a mouse-like controller and the eight-inch display screen.

The system is incredibly easy to use. Simply move the pointer on the display screen to a function's icon and click. For extra ease of use, when the pointer gets near to the icon, you can feel the controller being very gently, and helpfully, drawn towards it.



DIGITAL ENTERTAINMENT

The new-generation RX 450h can be ordered with a nine, 12 or 15-speaker stereo system for high-quality playback of music, videos or other digital media.

At the top of the range is the 15-speaker Mark Levinson® Premium Surround system, offering exceptional fidelity and clarity. Passengers will also enjoy CDs and DVDs in 7.1-channel surround sound. Lexus and Mark Levinson® spent many hundreds of hours testing in both the laboratory and on the road to tailor the Premium Surround system to suit the acoustic characteristics of the RX. Consequently, each of the 15 speakers is custom-engineered for its specific location in the cabin.

All models are fitted with an auxiliary input and USB port which enables the use of iPods or other media players. The RX is also DAB (Digital Audio Broadcasting) ready. When the RX is fitted with the Mark Levinson® Premium Surround system, a Hard Disk Drive allows you to save CDs and manage them with Gracenote® software. This state-of-the-art package catalogues data such as artist, album name and track.



IN-CAR ENTERTAINMENT (ICE) SYSTEM

For effortless relaxation on long journeys, Lexus has developed an advanced rear seat In-Car Entertainment (ICE) system*.

The ICE includes a tablet securely mounted to the back of each front seat, with side-loading integrated DVD player, SD card and USB 2.0 readers, and connectivity with your iPod® or other media player. Compatible games consoles can also be connected.

Two sets of foldable infrared headphones allow passengers to enjoy films and music without disturbing the driver. In addition to manual controls on the front of each tablet, a pleasingly tactile, ergonomically designed remote control gives the freedom to access media while remaining comfortably seated.

The exceptionally resilient system ensures full protection against screen-jitters and the tablets can be viewed easily from wide angles.

* Standard on SE-L Premier.



Main features of the In-Car Entertainment system

Two seatback-mounted tablets with:

- 8" WVGA screen
- Side-loading integrated DVD player
- USB 2.0 reader
- SD card reader
- RCA inputs for games consoles
- Stereo jack
- Manual control option
- Compatibility with DVD playback and video, MPEG 2, MPEG 4, Div X, MP3 CD and DVD, and photo, video and super video CD
- Able to use screens independently or choose a single source

Foldable infrared headphones suitable for children or adults
Ergonomically designed, tactile-touch remote control with simple layout

WORLD-CLASS SAFETY PERFORMANCE

In developing the RX 450h, Lexus aimed for the highest levels of active and passive safety. Approximately 42 per cent of the entire body mass is composed of high-tensile steel, creating a lightweight, exceptionally rigid structure that ensures maximum protection. Endorsing this, internal test results show that the RX exceeds the requirements of global safety test standards. You are also protected by 10 airbags - a class-leading number - and active front headrests.

ACTIVE FRONT HEADRESTS

If there is a rear collision, active headrests can help to prevent or limit whiplash injury to the front passengers. Sensors in the front seats trigger a mechanism that pushes the headrests upwards to support the head.

TWIN-CHAMBER PASSENGER AIRBAG

In many crash tests, Lexus engineers noticed that the front seat passenger travelled further than the driver before hitting the front airbag, which can lead to greater facial injuries. To address this, they designed the award-winning twin-chamber airbag. This distributes impact more widely across the shoulders, effectively 'catching' the passenger.

KNEE AIRBAGS

These are specified for both front seat occupants. In a frontal collision, they supplement the seatbelts and front airbags to provide an equal distribution of restraining force.

CURTAIN SHIELD AIRBAGS

In a side collision, curtain shield airbags deploy across the side windows, protecting the heads of occupants in both the front and rear seats. They also provide protection from objects both inside and outside the vehicle, and inflate automatically to protect passengers' heads in the unlikely event of the RX rolling over.

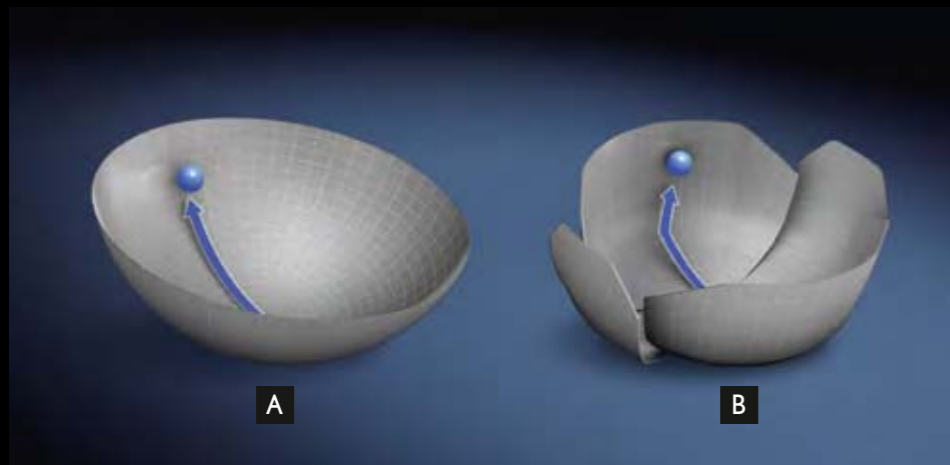
SIDE AIRBAGS

Extra protection is also built into the front and rear seats, through side airbags that are wide enough to protect the occupant's chest even while the seatback is reclined.



VEHICLE DYNAMICS INTEGRATED MANAGEMENT

Next-generation Vehicle Dynamics Integrated Management (VDIM) is optimally matched to the performance of the newly designed RX suspension and E-FOUR, to smoothly assist before the vehicle reaches its performance limit



VEHICLE DYNAMICS INTEGRATED MANAGEMENT

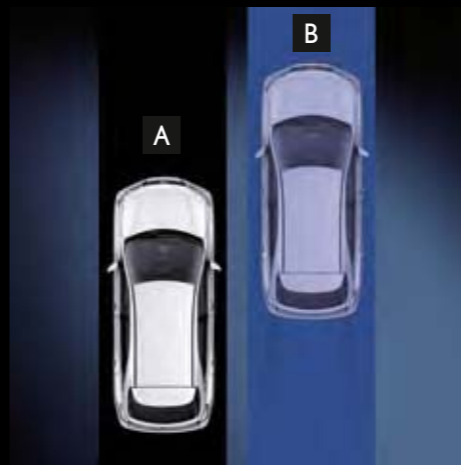
For a safe and smooth drive, Vehicle Dynamics Integrated Management (VDIM) is fitted as standard to the RX 450h. This pools the vehicle's active driver support systems into a cohesive 'thinking' unit that anticipates difficult situations. It then makes corrections exactly when needed, making it proactive and not, like some conventional systems, reactive. VDIM gathers data such as wheel rotation, brake pressure and movement of the vehicle's body.

- A. ABS, EBD, BAS, TRC and VSC+ all working together
- B. ABS, EBD, BAS, TRC and VSC+ not working together



ELECTRONIC BRAKEFORCE DISTRIBUTION

Electronic Brakeforce Distribution (EBD) works with ABS to ensure that the most effective brakeforce is applied to each wheel according to road conditions. By preventing the wheels from locking, EBD helps to maintain sure-footed stability during cornering and braking.



BRAKE ASSIST SYSTEM

If, in emergency braking, a driver fails to apply enough force to the brake pedal or releases the brake too soon, BAS deploys extra brakeforce automatically. For extra safety when braking heavily, the rear brake lights flash to warn drivers behind of the situation.

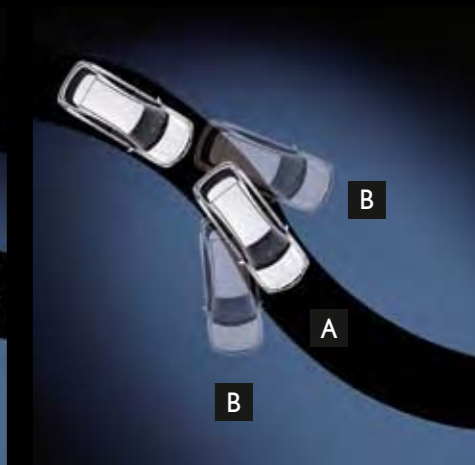
- A. With BAS
- B. Without BAS



TRACTION CONTROL

This is particularly useful on slippery or uneven surfaces. If TRC detects a loss of traction on one or more wheels, its skid control computer instantly determines the best way to restore traction by reducing power or applying brakeforce. TRC (like VSC+, see right) can also be turned off, which can be a benefit on very muddy or snowy surfaces.

- A. With TRC
- B. Without TRC



VEHICLE STABILITY CONTROL+

Vehicle Stability Control plus (VSC+) is there to prevent loss of control of the RX if, for instance, you enter a corner too fast or encounter slippery conditions that might lead to a skid. If VSC+ calculates that the driver is about to lose control of the vehicle, it will apply various stability and safety systems to varying degrees.

- A. With VSC+
- B. Without VSC+

PRE-CRASH SAFETY AND DRIVER SUPPORT

For a relaxed and safe drive, the new-generation RX 450h offers a comprehensive choice of innovative driver support systems

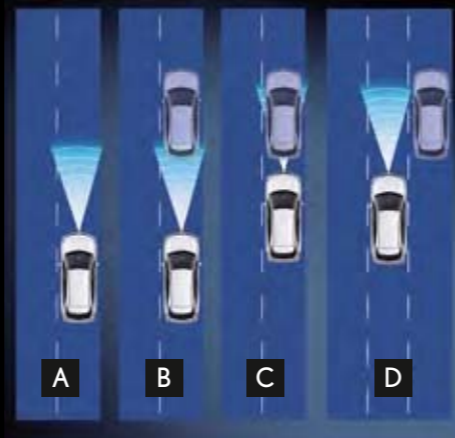


PRE-CRASH SAFETY SYSTEM

The Pre-Crash Safety system* (PCS) helps maximise safety in those vital seconds before a collision. A millimetre-wave radar sensor mounted behind the 'L' on the front grille detects objects in front of the vehicle. If the system registers high-risk, PCS alerts the driver with a warning buzzer and a 'BRAKE' signal.

If a collision is unavoidable, PCS engages Pre-Crash Brake Assist, which automatically applies the brakes prior to impact to help reduce collision force. Pre-Crash Seatbelts are also activated, retracting both front seatbelts in the instant before impact.

*Only available as standard on SE-L Premier. Please note: the Pre-Crash Safety System (PCS) has been designed to help reduce crash speed and damage in certain frontal collisions only. It is not a collision avoidance system. Adaptive Cruise Control (ACC) is designed to reduce the amount of driver effort required when travelling longer distances. Neither system can replace safe and attentive driving. System effectiveness depends on many factors, such as speed, driver input, climate, weather and road conditions.



ADAPTIVE CRUISE CONTROL
Adaptive Cruise Control* (ACC) works in tandem with the Pre-Crash Safety System (PCS) and uses the same advanced radar technology. With ACC, the radar is linked to the vehicle's braking and throttle systems. This enables the system, within a certain speed range, to maintain a set distance between the RX and the vehicle ahead, even if that vehicle varies its speed.

- A. Constant speed
- B. Deceleration control
- C. Following control
- D. Acceleration control



LED HEADLIGHTS AND INTELLIGENT-ADAPTIVE FRONT-LIGHTING SYSTEM

The jewel-like headlights on the RX 450h are the world's first application of low-beam LED (Light-Emitting Diode) headlight technology in a luxury utility vehicle. They offer extremely focused light, use less energy and last longer than conventional bulbs.

Standard feature on SE-L and SE-L Premier grades.



PARKING ASSIST MONITOR

This feature helps you manoeuvre into even difficult parking spaces without incident by showing a colour image of the area behind the RX 450h. It is shown on the central display or a screen integrated into the rear-view interior mirror (when the central display is not specified). On-screen guidelines also help make parking as easy as possible.

N/A on SE grade.



SIDE MONITOR

The RX 450h can be ordered with a Side Monitor to help with close-quarter parking. The Side Monitor uses a small camera in the passenger door mirror that transmits images to the central display. The camera keeps working even if the mirrors are folded back while you are negotiating a narrow entrance.

Standard feature on SE-L and SE-L Premier grades.

SPECIFICATIONS

Engine and Lexus Hybrid Drive	RX 450h
Engine type	3.5-litre V6 petrol with Atkinson Cycle
Capacity	3,456 cm ³
Max. output	249 DIN hp / 183kW@6,000rpm
Max. torque	317Nm@4,800rpm
Front electric motor	
Max. output	167 DIN hp / 123kW
Max. torque	335Nm
Rear electric motor	
Max. output	68 DIN hp / 50kW
Max. torque	139Nm
System output	
Max. output	299 DIN hp / 220kW
Transmission	
Driven wheels	Part-time E-FOUR four-wheel drive
Transmission	E-CVT (Electronically-controlled Continuously Variable Transmission) with sequential shift mode
Performance	
Max. speed	124mph / 200km/h
0-62mph	7.8seconds
Fuel consumption (according to 93/116/EEC)	
Urban	43.5mpg / 6.5 l/100km
Extra urban	47.1mpg / 6.0 l/100km
Combined	44.8mpg / 6.3 l/100km
CO₂ emissions	
Emissions level	Euro V
Combined	145g/km
BIK tax rate (2010/11)	15%
Brakes	
Front	Ventilated discs
Rear	Ventilated discs
Suspension	
Front	MacPherson strut, coil springs
Rear	Double wishbone
Active stabilisers or air suspension	Optional
Capacities	
Fuel tank	65 litres
Luggage compartment	446 litres
Weights	
Kerb weight (min.-max.)	2,110kg-2,205kg
Gross vehicle weight	2,700kg

STANDARD EQUIPMENT

Safety and security	ABS (Anti-lock Braking System)
	BAS (Brake Assist System)
	TRC (Traction Control)
	EBD (Electronic Brakeforce Distribution)
	VSC+ (Vehicle Stability Control)
	VDIM (Vehicle Dynamics Integrated Management)
	Hill-start Assist Control (HAC)
	Anti-theft system, alarm, immobiliser and double door lock
	Driver and front passenger 2-stage front, knee and TAP (Thorax Abdomen Pelvis) airbags
	Rear passenger side airbags
	Curtain shield airbag, front and rear
	Front passenger airbag cut-off switch
	WIL (Whiplash Injury Lessening) front seats
	ISOFIX attachment, rear seats
	Seatbelt pre-tensioners front and rear
	Temporary spare wheel
Exterior	
	Headlight washers
	Outside rear-view mirrors: electrically adjustable, heated, foldable, electro-chromatic (auto-dimming)
	LED (light-emitting diode) rear lights
	Laminated front side windows with UV-reduction glass
	Rain-sensing wipers
Interior	
	Smart entry and start system
	USB and Bluetooth® connectivity
	Optitron display with ECD (Electro Chromatic Device - auto dimming)
	LED interior illumination
	Electro-chromatic rear-view mirror
	Electrically adjustable steering wheel (tilt and telescope)
	EPS (Electric Power Steering)
	Illuminated entry system
	9-speaker audio system with in-dash, single-slot 6-CD autochanger and auxiliary and USB input
	Multi-Information Display in centre instrument cluster
	One-touch power windows front and rear
	Privacy glass
	Dual zone climate control with clean air filter and pollen removal mode
	Separate driver/passenger temperature controls
	40:20:40 split, slidable and foldable rear seats
	Dark grey gloss trim
	Cruise control

ADDITIONAL FEATURES

	RX 450h SE	RX 450h SE Navi	RX 450h SE-I
18" alloy wheels, 5 spoke design (235/60 R19)	●	●	
19" alloy wheels (235/55 R19)			●
Leather upholstery with 8-way electrically adjustable heated front seats	●	●	●
Memory function for driver's seat, steering wheel and exterior mirrors	●	●	●
Inside rear-view mirror with rear-view monitor (2.4")	●		
Leather steering wheel with audio, telephone, cruise control and multi-function switches	●	●	●
High Intensity Discharge (HID) headlights with I-AFS	●	●	●
Parking assist sensors, front and rear			●
Navigation package with 8-colour LCD multi-display, Hard Disk Drive (HDD) navigation system with Dynamic Route Guidance (DRG), multiple display screens to control/monitor vehicle systems, e.g. audio/climate/on-board computer, Parking Assist Monitor, Remote Touch system		●	●
Standard audio system (6-CD autochanger, 9 Speakers)	●		
Upgraded premium audio system with Hard Disk Drive (HDD) Navigation, 6-CD autochanger, 12 speakers		●	●
Digital Audio Broadcasting (DAB) radio	Optional	Optional	Optional
Power back door			●
Electric sunroof			Optional
Wood package (wooden trim and steering wheel)			Optional
Rear seat In-Car Entertainment (ICE)	Optional	Optional	Optional

	RX 450h SE-L	RX 450h SE-L Premier
19" alloy wheels (235/55 R19)	●	●
Semi-aniline leather upholstery with 10-way adjustable heated and ventilated front seats	●	●
Memory function for both front seats, steering wheel and exterior mirrors	●	●
Leather steering wheel with audio, telephone, cruise control and multi-function switches	●	●
LED headlights with Intelligent-Adaptive Front-lighting System (I-AFS)	●	●
Light-Emitting Diode (LED) scuff plate illumination	●	●
Parking assist sensors, front and rear	●	●
Navigation package with 8-colour LCD multi-display, Hard Disk Drive (HDD) navigation system with Dynamic Route Guidance (DRG), multiple display screens to control/monitor vehicle systems, e.g. audio/climate/on-board computer, Parking Assist Monitor, Remote Touch system	●	●
15-speaker Mark Levinson® Premium Surround system (7.1 surround system, DVD playback facility, Hard Disk Drive (HDD) sound library with Gracenote® database, in-dash, single-slot 6-CD/DVD autochanger)	●	●
Digital Audio Broadcasting (DAB) radio	●	●
Air suspension	●	●
Pre-Crash Safety System (PCS) with Adaptive Cruise Control (ACC)		●
Head-Up Display (HUD)		●
Side monitor	●	●
Card key (in addition to standard key)	●	●
Power back door	●	●
Electric sunroof	Optional	●
Wood package (wooden trim and steering wheel)	Optional	Optional
Rear seat In-Car Entertainment (ICE)	Optional	●

LEXUS ACCESSORIES

A. COMPLEMENTARY BLUETOOTH® KIT*

A discreet external antenna enhances mobile phone reception and a cable-free cradle secures the phone and charges its battery.



B. HOMELINK®

HomeLink will operate up to three home automation systems from a control unit permanently mounted within the RX. For instance, it can be programmed to activate security lighting and open or shut drive gates and garage doors. Available in a choice of colours (not available with sunroof).



C. DIGITAL AUDIO BROADCASTING (DAB)

Upgrades the integrated tuner within the RX 450h's navigation system to receive digital audio broadcasting. Operation is via the touch-screen controls.

D. DOG GUARD

Clips neatly into place, preventing access to the passenger area.



* Contact your local Lexus Centre for full details of mobile phone compatibility.



E. BARRACUDA BICYCLE HOLDER

The Barracuda has an anti-theft lock system to protect both the holder and bicycle and a moulded retainer to securely grip the bicycle's wheels. Available in left and right-side versions

F. BOOT LINER

With its non-slip surface and lipped edge, the boot liner is ideal for protecting carpets against mud and dirt.

G. CARGO NETS

Luggage sliding around the boot can be a distraction. The horizontal cargo net provides a time-proven solution. Simple in concept yet reassuringly practical, the vertical cargo net clips neatly onto fitted hooks to hold small items firmly in place.

LEXUS ACCESSORIES

H. REAR BUMPER PROTECTION PLATE
High-strength guard shields rear bumper paintwork from loading damage.



I. DETACHABLE TOWING HITCH
The hitch has a towing capacity of up to 2,000kg. For added convenience, the towing arm can be removed when not required. The towing hitch package includes a dedicated wiring kit for integration with the lighting system.



J. FRONT AND REAR UNDERRUN
Extra protection against stone chips for the under engine compartment. Purpose-designed to shield the front and rear underside and finished with a brushed aluminium effect.



K. ROOF RACK
The lockable lightweight aluminium roof rack is easy to install and use. Combines with a wide range of specialised optional attachments.

L. LUGGAGE BOX
The high capacity yet streamlined design is ideal for touring holidays. Interior straps hold the contents neatly in place. Central locking and passenger side opening enhance security and convenience.



M. ROOF RAILS
Permanently fixed roof rails add convenience if there is a regular need for roof-top transportation. The rails can be fitted with cross bars for specialised Lexus carrying attachments.

N. CROSS BARS
The lockable aluminium cross bars are custom designed for use with Lexus roof rails.

LEXUS COLLECTION

At Lexus, we create luxury vehicles of refinement and style, that combine innovation, technological excellence and reliability.

These are qualities we believe you look for, not only in your vehicle, but in other areas of your life too. Which is why we've applied the same exacting standards to the Lexus Collection.

This range of clothing, gifts, golfing and travel accessories speaks volumes about quality.

Every item in the Lexus Collection is a statement in style. Discreet. Well made. Expertly finished. In fact, everything you've come to expect from Lexus.

HOW TO ORDER

The Lexus Collection is available to buy from your local Lexus Centre. On these pages you'll find a selection of the items available. For the full range, please visit your local Lexus Centre or visit www.lexus.co.uk.



A. LEXU160
Titleist Pro V1 golf ball set

B. lexu 0020
Trevor the Teddy Bear

LEXU0136
Harvey the shaggy dog

C. LEXU0074
Six-panel black cotton baseball cap

D. LEXU0140
Supervent umbrella

E. LEXU0134
Lexus cufflinks, subtle yet stylish

F. LEXU0142
Brushed steel and nappa leather
L-finesse keyring and case

G. LEXU0129
Magnetic steel tax disc holder

H. Lexu 0122
Black nappa leather CD case, holds
16 CDs

I. LEXU0130
Thermal mug, a great complement to
Lexus cup holders

J. LEXU0513
Visir pen set

K. LEXU0512
Mobile phone buddy with 4 USB
hubs in the base (phone not included)

OWNING A LEXUS

ROADSIDE ASSISTANCE

We want to ensure that you enjoy driving your Lexus anywhere in Europe with complete peace of mind. This is why we provide you with Lexus Roadside Assistance 24 hours a day, 365 days a year in both the UK and Europe*. Your membership gives you personal cover. That means you are entitled to the full range of benefits and services as the driver or passenger of any vehicle, not just while driving your Lexus. Your partner is also eligible for the same cover provided you both reside at the same address. To make use of this added bonus, please register your partner with Lexus Roadside Assistance on 0800 169 0393.

* Lexus Roadside Assistance is provided for the first three years of owning the car.

THREE-YEAR COMPREHENSIVE WARRANTY

Any defect that is attributable to a manufacturing or assembly defect under normal use is covered by your warranty. This provision applies for a period of three years

or 60,000 miles, whichever comes first, with no mileage limit for the first year. In the event of a breakdown immobilising your Lexus, the cost of recovering it to the nearest Lexus Centre is also covered if that breakdown is the result of a warrantable defect.

FIVE-YEAR HYBRID COMPONENT WARRANTY

For hybrid models, certain components within the hybrid drivetrain system have a five-year or 60,000 miles warranty, whichever comes first.

THREE-YEAR SURFACE RUST AND PAINTWORK WARRANTY

The three-year, unlimited mileage warranty covers surface rust and paint defects on any painted body panels due to a fault in material or workmanship.

12-YEAR CORROSION PERFORMANCE WARRANTY

A 12-year unlimited mileage warranty covers the vehicle against rust perforation through

any sheet metal body panel (subject to certain exclusions specified in the warranty booklet) occurring as a result of a manufacturing or assembly defect in the vehicle. The warranty booklet supplied with each new vehicle gives full details. This warranty is also transferable to subsequent owners.

ACCESSORIES

Please consult your local Lexus Centre for the full specification of approved Lexus Accessory products.

WORLD-LEADING QUALITY

Since its launch, Lexus has been in the vanguard of what is achievable in the luxury automobile category. Our long list of awards and quality records are proof of this achievement: In addition to awards for best luxury car, best chauffeur car, best security and being rated best manufacturer, Lexus has won numerous UK customer satisfaction prizes for many consecutive years, and is a seven-time winner of a UK award for best manufacturer.

INTERIOR COLOURS

Achieving a satisfying balance when it comes to the interior of the RX 450h is important. For this reason, we have taken great care to offer a selection of upholsteries and finishes that are distinctive and tasteful. The RX 450h is available with a choice of Black, Ivory or Grey leather upholstery and dark grey gloss inlays as standard. Wood inlays are optional on SE-I grades and above. Medium brown walnut is offered with Black and Ivory leather interiors, while dark brown walnut complements Grey. Semi-aniline leather is standard on SE-L and SE-L Premier grades.

TRIMS

- A. Dark grey gloss
- B. Medium brown walnut wood
- C. Dark brown walnut wood

INTERIOR LEATHER

- D. Black
- E. Ivory
- F. Grey

The interiors illustrated here are intended to illustrate interior colour combinations only.



Grade	Upholstery	Standard Trim	Optional Trim
SE	Ivory leather	Dark grey gloss	
	Grey leather	Dark grey gloss	
	Black leather	Dark grey gloss	
SE-I	Ivory leather	Dark grey gloss	Mid brown walnut
	Grey leather	Dark grey gloss	Dark brown walnut
	Black leather	Dark grey gloss	Mid brown walnut
SE-L and SE-L Premier	Ivory semi-aniline leather	Dark grey gloss	Mid brown walnut
	Grey semi-aniline leather	Dark grey gloss	Dark brown walnut
	Black semi-aniline leather	Dark grey gloss	Mid brown walnut



EXTERIOR COLOURS

These colours are intended to serve primarily as a guide, and while they closely approximate the actual colours used, they should not be used for paint matching or any other purpose where complete accuracy is essential. We reserve the right to alter or withdraw any colour finish or seat trim without further notice. Please note, actual colours may vary from those shown due to printing variances. Please visit your local Lexus Centre to view colour swatches.

* Solid colour

Starfire Pearl (078)



Cerulean Blue (8U9)



Mesa Red (3R1)



Vanilla Mist (4U7)



Arctic Pearl (077)



Obsidian Black (214)



Celestial Black (217)



Argento Ice (1G1)



Cadoxtan State (1G0)



Velvet Black (212)*





TEST DRIVE THE RX 450h

We hope to have conveyed to you in these pages that the RX 450h offers a uniquely refined and dynamic driving experience. Of course, there's only one way to truly discover it for yourself – and that's to get behind the wheel. Please visit your local Lexus Centre to arrange a test drive.

For more information and the location of your local Lexus Centre, visit: www.lexus.co.uk or call 0845 129 5484.

END-OF-LIFE VEHICLES

Taking care of the environment is a key priority for Lexus, which is why we work to ensure that the environmental impact of our vehicles is minimised throughout the life cycle – from design, production, distribution, sales and service to end-of-life. You can find detailed information on environmental performance at www.lexus.co.uk.

Please note: while every effort is made to reproduce accurate information, we reserve the right to change specifications, equipment and availability without prior notice. The brochure cannot be regarded as infallible (the vehicle shown is left-hand drive) and as such does not constitute an offer of sale of the particular vehicle shown.

THE LEXUS RX 450h ADVANCE



 LEXUS

THE RX 450h ADVANCE

ELECTRIC SUNROOF OR PANORAMIC ROOF,
NAVIGATION PACKAGE, LEATHER UPHOLSTERY,
SMOKED 19" ALLOYS

The Advance has all the outstanding power and crossover performance characteristics of the Full Hybrid RX 450h, delivering the handling and comfort of a luxury saloon but with the flexibility of a large crossover. Accelerate hard and Lexus Hybrid Drive propels you smoothly from 0-62mph in just 7.8 seconds. And, astonishingly for a vehicle of this power, CO2 emissions are just 145g/km and particulate emissions are zero. Several features have been added to amplify its personality. These include: Electric Sunroof or Panoramic Roof, sumptuous leather interior, Navigation package with 8-colour LCD multi-display, Hard Disc Drive (HDD), Dynamic Route Guidance (DRG), Parking Assist Monitor and Remote Touch system, 19" smoked alloy wheels, dark grey radiator grille, black headlight housing, and front and rear bumper 'under-runs'.

Model shown is left-hand drive, UK specification is right-hand drive.



EVERYTHING UNDER THE SUN

ADVANCE MODEL FEATURES

Our new RX 450h Advance builds on the RX SE-I* grade, but with certain key design changes to enhance its sporting looks. These include:



PANORAMIC ROOF

The RX 450h Advance is available with a large panoramic roof incorporating a 3-part electric sliding blind, which will shade you should the sun become too intense.



ELECTRIC TILT-AND-SLIDE SUNROOF

For a superbly light and airy cabin, the RX 450h is also available with an electric tilt-and-slide sunroof, which adds a feeling of freedom, spaciousness and light to the cabin.



DYNAMIC GRILLE

Finished in an elegant dark grey, the Lexus signature grille enhances the car's powerful L-finesse front design and dynamic appearance.



BLACK HEADLIGHTS SURROUND

Fitted in stylish black housings, High Intensity Discharge (HID) bi-xenon headlights give this crossover a uniquely sporty look.



SMOKED 19" ALLOY WHEELS

With a smoked effect finish, these darkened alloy wheels complement the dark grey grille and darkened headlight housings.

* Please refer to the full model brochure for the RX 450h SE-I standard equipment.

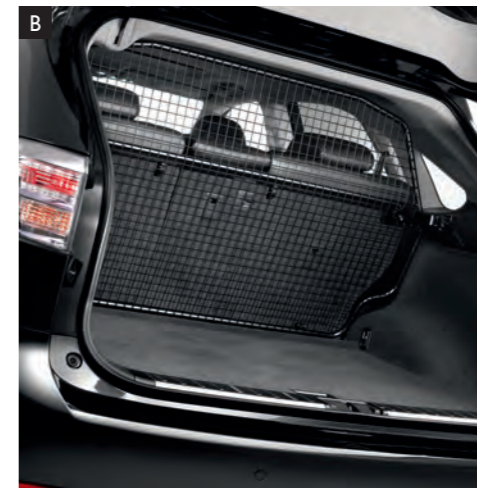
EXTRA PROTECTION



FRONT AND REAR BUMPER UNDER-RUNS
Extra protection against stone chips for the under engine compartment. Purpose-designed to shield the front and rear underside and finished with a brushed aluminium effect.



THE FINISHING TOUCHES TO YOUR RX 450h ADVANCE



A. PROTECTION PACK
Front/rear mud flaps, rear rubber bumper protector, boot liner and rubber mats
(£579 including VAT and fitting)

B. DOG GUARD
(£429 including VAT and fitting)

TRACKER SYSTEMS
(from £299 plus subscription charges)

SAFETY AND TRAVEL KIT
Fire extinguisher, bulb travel kit, warning triangle, high-visibility jacket and first aid kit
(from £79 including VAT and fitting)

These optional specifications are dealer fitted. Prices correct at time of going to print.

FEATURES AND SPECIFICATIONS



450h ADVANCE

Key features:

Electric Tilt-and-Slide Sunroof or Large Panoramic Roof
 Full Map Navigation Package including Hard Disc Drive navigation system with Dynamic Route Guidance
 Parking Assist Sensors, Front and Rear
 Premium Audio System with 6-CD autochanger and 12 speakers

High Intensity Discharge (HID) bi-xenon headlights with Intelligent - Adaptive Front-lighting System (I-AFS)
 19" Smoked Alloy Wheels
 Dark Grey Grille
 Front and rear bumper under-runs with brushed aluminium effect
 Power Tailgate

RX 450h TECHNICAL DATA

Engine	Capacity (cm ³)	3456
	Cylinders/valves	V6/24
	Valve mechanism	VVT-i
	Fuel type	Petrol, 95 octane or +
	Max. power (DIN hp @ rpm)	249 @ 6,000
	Max. torque (Nm @ rpm)	317 @ 4,800
Transmission	Driven wheels	Part-time All-Wheel Drive (E-FOUR)
	Transmission	Electronic-Continuously Variable Transmission (E-CVT) with sequential shift mode
Hybrid drive	Maximum system output (DIN hp)	299
Performance	Maximum speed (mph)	124
	0-62 mph (s)	7.8
Fuel consumption* (mpg)	Urban	43.5
	Extra urban	47.1
	Combined	44.8
CO₂ emissions* (g/km)	Emissions level	Euro V
	Urban	147
	Extra urban	145
	Combined	145

* The fuel consumption and CO₂ values of your vehicle may vary from those measured. Driving behaviour as well as other factors (such as road conditions, traffic, vehicle condition, tyre pressure, installed equipment, load, number of passengers etc) play a role in determining a car's fuel consumption and CO₂ emissions.

EXTERIOR COLOURS

These colours are intended to serve primarily as a guide, and while they closely approximate the actual colours used, they should not be used for paint matching or any other purpose where complete accuracy is essential. We reserve the right to alter or withdraw any colour finish or seat trim without further notice. Please note, actual colours may vary from those shown due to printing variances.

* Solid colour

Starfire Pearl (078)



Mesa Red (3R1)



Cerulean Blue (8U9)



Vanilla Mist (4U7)



Arctic Pearl (077)



Argento Ice (1G1)



Obsidian Black (214)



Mercury Grey (1H9)



Celestial Black (217)



Velvet Black (212)*



The following colour changes affect the entire RX range: Mercury Grey (1H9) replaces Cadoxton Slate (1G0).



EXPERIENCE THE RX 450h

TEST DRIVE A LEXUS

We hope to have illustrated in these pages that Lexus creates vehicles of refinement, innovation and style. But only behind the wheel of one of our models can you truly experience the pleasure, performance and seamless anticipation of your needs as a driver at first hand. Simply consult your local Lexus Centre to arrange a test drive.

For further information, to find out more about owning a Lexus or to simply locate your local Lexus Centre, please visit our website, www.lexus.co.uk, or call 0845 129 5484.

END-OF-LIFE VEHICLES

Taking care of the environment is a priority for Lexus. We strive to minimise the environmental impact of our vehicles throughout their life cycle - from design, production, distribution, sales and service to end-of-life. For more detailed information on environmental performance please visit www.lexus.co.uk