

"THE HIROSHIMA SPIRIT IS TO NEVER GIVE UP, TO PURSUE EXCELLENCE. TO MAINTAIN A "CAN DO" ATTITUDE."



"WITH A COMPACT, LIGHT ENGINE, A LIGHT BODY AND A BEAUTIFUL DESIGN. WE AIM TO CREATE A NEW STANDARD OF CARS."



"MAZDA WILL CONTINUE TO CHALLENGE, IN ALL OUR PURSUITS. WE'LL ALWAYS DO THINGS DIFFERENTLY."

MASAHIRO MORO
EXECUTIVE OFFICER



FOLLOW THE STORY AT Mazda.co.uk



"DESPITE ADVANCEMENT IN TECHNOLOGY, YOU CAN ONLY GO SO FAR WITH COMPUTERS OR OTHER SCIENTIFIC MEANS. ULTIMATELY, IT DEPENDS ON THE CARMAKER'S SKILL AND SENSITIVITY."

HIROTAKA KANAZAWA
MANAGING EXECUTIVE OFFICER



INSPIRED ENGINEERING

You're looking at the stunning Mazda3, a combination of dynamic and expressive design with inspired engineering. An aggressive 5-point grille, sculpted bonnet and prominent front bumper hint at the power within. Flared wheel arches and a low waistline provide a clue to the highly tuned chassis. But it's only when you're behind the wheel that you can really begin to appreciate the depth of this car's appeal. The steering is that little bit more precise. The engine more eager to rev. The handling better balanced. The brakes more responsive. These come together to create a true driver's car – let the Mazda3 remind you how much fun driving can be.





INSTANT ATTRACTION

The instant you set eyes on the Mazda3 you can see that this is something different: something distinctive. Beneath the striking design, the strengthened bodyshell provides an immensely stable platform for the advanced engines that make it so enjoyable to drive whilst providing excellent ride comfort for all. The aerodynamic Mazda3 flows effortlessly through corner after corner, improving your fuel economy and minimising emissions, whilst inviting you to fully explore its breadth of dynamic abilities.

ADVANCED INNOVATION

The bold, dynamic and striking looks of the Mazda3 are no mere styling exercise. By combining the latest design technologies it achieves class-leading aerodynamics and minimal weight gains. Less air resistance means less engine power is required to travel and therefore improving fuel consumption. Responsive diesel powertrains provide powerful and economical performance to keep you away from the fuel pumps and your money in your pocket.



RESISTANCE IS FUTILE

Mazda is different – and proudly so. We're always seeking new and innovative ways to improve our cars – defying convention as we do so. We make the steering just that little bit more precise; more controlled. The handling better balanced. The brakes more responsive. Around town, the light-touch foot pedals and instant acceleration provide nimble and sure-footed handling; the advanced suspension soaking up bumps with ease. On the motorway, road and wind noise is a thing of the past, whilst the high-quality engine note provides direct, sporty feedback. Just as you should expect.



COME ON IN

Mazda3's interior is a fusion of premium refinement and outstanding functionality, with soft-touch materials, satin chrome trims and the intuitive layout of the controls and dials. A Multi-Information Display, sporty twin meter dials and an interactive lighting system come together to create a true driver focused environment. Heated front sports seats add luxury and comfort, whilst cruise control and dual-zone climate control air-conditioning hint at the impressive levels of specification available. Completing the package on selected models is the state-of-the-art TomTom satellite navigation system featuring the latest TomTom technologies, including advanced lane guidance, ensuring you never miss a turn and Live Services. So sit back and enjoy the dynamic drive of the Mazda3.





FORWARD THINKING

We know that having a car fitted with advanced safety technology is important to you. That's why in the Mazda3 we have incorporated a whole host of safety equipment including a sophisticated Dynamic Stability Control and Traction Control system. An Emergency Stop Signal system which automatically flashes the hazard warning lights under heavy braking conditions; and LED tail-lights that are faster and brighter. Plus six airbags and active front headrests all fitted as standard to protect you and your occupants in the unlikely event of an accident. It's all here in the Mazda3.





RANGE OVERVIEW

Will you choose the stunning 4-door saloon or the spectacular 5-door hatchback? And then which model do you go for: Base, Touring, Touring Plus or Sport? Each is superbly equipped. Choices, choices, choices...

MAZDA3 TAMURA

- 17" Alloy wheels
- Rear roof spoiler
- Side skirts and sports grille
- Front fog lights
- Dynamic Stability Control (DSC) with Traction Control System (TCS)
- Emergency Stop Signalling system (ESS)
- Dual front, side and curtain airbags
- Active front headrests
- 60/40 split rear seats
- Dual-zone climate control air-conditioning
- Front and rear electric windows
- Power folding, heated door mirrors
- AM/FM radio, CD player, six speakers and auxiliary (AUX) input jack
- Steering wheel audio controls
- Leather steering wheel and gear knob
- Multi-Information Display (MID) system including trip computer
- Interactive Lighting Control (ILC) system featuring action illumination



RANGE OVERVIEW

THE MAZDA3 LINE-UP

MAZDA3 VENTURE

As Tamura models plus:

- 17" Bright alloy wheels
- Privacy glass rear and rear side windows
- 5.8" TomTom Satellite Navigation System
- Integrated Bluetooth®
- Rear parking sensors
- Black mica door mirror covers
- USB connectivity
- Cruise control
- Auto-dimming rear-view mirror
- Rain-sensing front wipers and dusk-sensing headlights
- Sports heated front seats (5-stage settings)
- Enhanced Interactive Lighting Control (ILC) system

MAZDA3 SPORT NAV

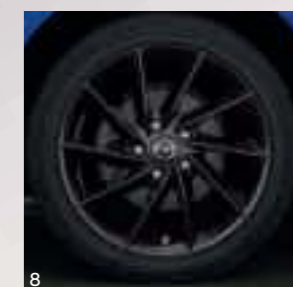
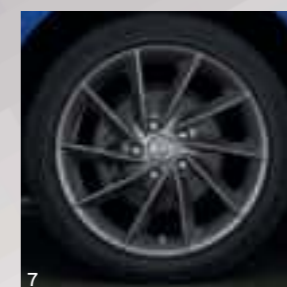
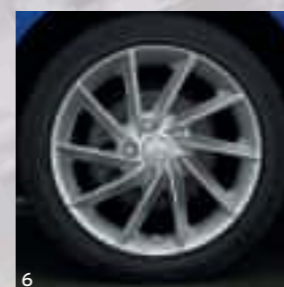
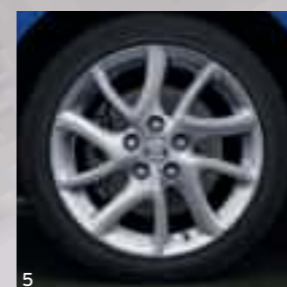
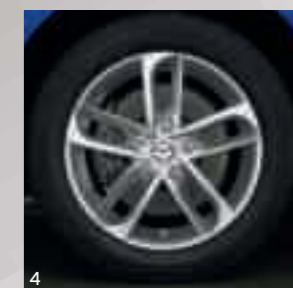
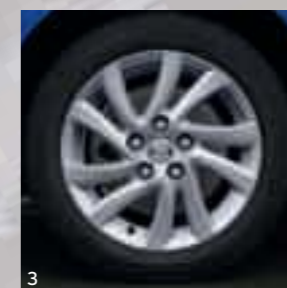
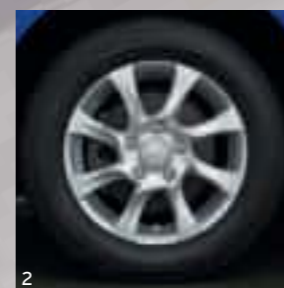
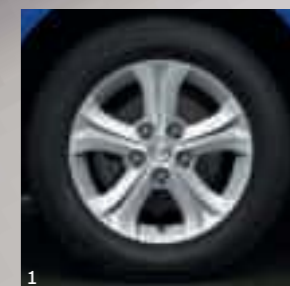
As Venture models plus:

- Heated front windscreen
- LED rear lights

FEATURES OF THE TOMTOM SATELLITE NAVIGATION

- 5.8" touch screen
- TomTom Live Services¹
- TomTom IQ routes™
- Advanced lane guidance
- Voice control





MAKE IT YOURS

Why not make a statement with genuine Mazda alloy wheels that are precision cast and machined, and then finished to a jewel-like quality? Or how about creating a sportier stance with an Eibach suspension-lowering kit?

- | | |
|--|---|
| 1 15" Alloy wheel – design 133 (Accessory). | 6 17" Alloy wheel with silver finish – design 52 (Accessory). |
| 2 15" Alloy wheel – design 50 (Accessory). | 7 17" Alloy wheel with titanium finish – design 52B (Accessory). |
| 3 16" Alloy wheel – design 142 (Accessory). | 8 17" Alloy wheel with black gloss finish – design 52A (Accessory). |
| 4 16" Alloy wheel – design 56 (Accessory). | |
| 5 17" Alloy wheel – design 143 (Tamura / Accessory). | |



MAKE IT YOURS

It's time to put your own stamp on the Mazda3. Add your choice of Mazda genuine accessories and you can make your driving experience that little bit more personal.



1



2



3



4



5



6



7

- 1 Brushed aluminium finish inner door handles.
- 2 Leather-wrapped gear knob with chrome finish.
- 3 Pioneer satellite navigation system.
- 4 Hands-free kit*, with touch-screen display, voice control and Bluetooth® connectivity.

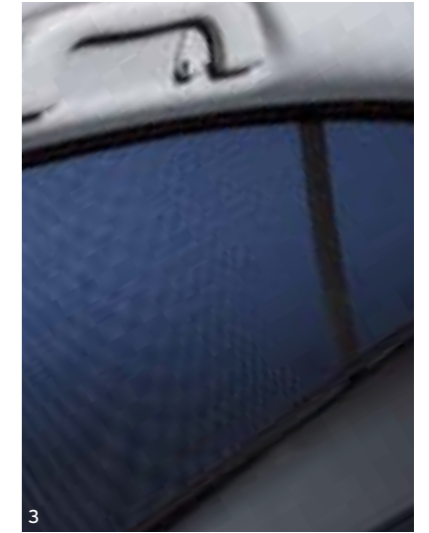
- 5 Door speaker bezels.
- 6 iPod USB adapter.
- 7 Illuminated scuff plates.

*Images shown may not be to correct accessory specification.



MAKE IT YOURS

Of course, you should make the most of your new car. That's why we've created a range of purpose-designed accessories for the Mazda3 – like roof boxes, bike and ski racks, boot liners and tow bars – that all help boost your car's versatility.



1 Boot storage shelf.

2 Boot liner.

3 Sunblinds.

4 Detachable tow bar.

5 Thule rear bike carrier, tow bar mounted.

6 Thule roof box (roof rails required).

7 Thule ProRide bike attachment for roof carrier.

8 Britax Römer Duo Plus (ISOFIX) child seat.

MAZDA FINANCIAL SERVICES

Who are we?

Mazda Financial Services is a division of Santander Consumer, the leading Consumer Finance House in Europe. We provide finance for your Mazda vehicle through your Mazda dealer at competitive rates and insurance products. We are one of the UK's leading 'point of sale' finance providers, which means we enable your Mazda dealer to provide you with a convenient "One-Stop Shop" when choosing your next Mazda. From our wide range of finance plans, there's an option that's right for you, whether you are thinking of a new or used Mazda.

What you can expect from Mazda Financial Services:

- Face-to-face service from trained, plain-talking people at your local Mazda Dealer
- Assistance in renewing your car. We'll help you choose the right finance package to enable you to renew your Mazda car as often as you like
- Fixed Interest Rates. The interest rate on your loan is fixed for the duration of the agreement
- Flexible terms tailored to your motoring needs. As specialists in Mazda vehicles we can tailor a finance package to both your budget and your motoring / ownership needs

Please ask your sales executive for a tailor-made finance quote for your new car.

Mazda Financial Services Finance Plans:

Mazda Conditional Sale:

The traditional way of buying your car. Mazda Conditional Sale is flexible and simple, with a range of options to suit everyone.

The benefits

- Simple – fixed, equal, regular instalments
- Predictable – pay all your instalments and you own the car
- Flexible – you determine your repayment period at the start of your contract, meaning that you have total control of your budget

How it works

1. Choose your Mazda. Tell your dealer the deposit and repayment period you want, from 12-60 months.
2. Agree your repayments. These are based on how much is left to pay, plus interest where applicable.
3. Drive away the moment we activate your agreement.

At the end of your contract, when all instalments have been made, the car is yours. You now have two choices:

- **Renew:** Choose another Mazda. The car is yours; you can part exchange it for another Mazda and use the value as your deposit
- **Retain:** Keep the car. The car is yours once all instalments have been made

Mazda Personal Contract Purchase:

The finance plan that helps you to change your Mazda car at more regular intervals. Enabling shorter term finance agreements, meaning a new car more often.

The benefits

- You can fund your car over shorter periods, so you get the chance to change more often
- The flexibility at the end of the agreement to choose to renew, retain or return your Mazda
- You're protected against any fall in used car prices by an Optional Final Payment (OFP)

How it works

1. Choose any new or used Mazda. Estimate your annual mileage.
2. We estimate the minimum amount your car will be worth once your contract finishes – the OFP.
3. To work out your regular payments we add any interest charges and deduct your deposit plus the OFP from the price of your new Mazda.
4. Drive away the moment we activate your agreement.

At the end of your contract, when all instalments have been made, you now have three choices:

- **Renew:** Choose another Mazda. Use any excess value above the OFP towards a deposit for another Mazda. You can trade in your car at any time or sell it privately having settled your account
- **Retain:** Keep the car. Simply pay the OFP, and the car is yours
- **Return your car:** There's nothing more to pay if the car's in good condition and within the agreed mileage

OUR COMMITMENT TO THE ENVIRONMENT

Mazda makes cars that excite, look stylish and appealing, are fun to drive and make you want to get behind the wheel again and again. But we are equally committed to the environment, to the creation of a sustainable future for all. This means limiting the Earth's resources that we use and always considering the environmental impact in everything we do.

Our sustainability programme is dedicated to the development of clean technologies. This covers every aspect of a vehicle's impact on the environment – from planning and development, through to manufacturing, use and eventual recycling / disposal. Below are just three examples of how our environmental policies have led to significant advances in 'green' technology.

Plant-derived plastics

Our interior car plastics use carbon-neutral* plant-derived biomass – an industry first

Benefits:

- Reduces reliance on fossil fuels
- Cuts CO₂ emissions
- Uses sustainable raw materials
- Requires 30% less energy to produce than petroleum based plastics
- Is three times stronger than conventional bioplastics
- Has 25% higher heat resistance than conventional bioplastics
- Produces lighter, stronger parts improving fuel economy

*CO₂ released when the bioplastic decomposes or is burned is comparable to the amount absorbed by growing plants, having a negligible impact on total atmospheric CO₂ levels.

Semi-dry machining process

Conventional machining of cast metal parts uses huge amounts of water-based coolant to cool and lubricate cutting tools, and remove and collect waste metal. With Mazda's semi-dry machining process, we have substituted large volumes of coolant for tiny quantities of atomised biodegradable oil in a jet of air.

Benefits

- 84% reduction in the amount of coolant required
- Reduced electricity consumption by 40% on machining lines
- 80% cut in waste liquids

Recycling

Mazda has made a substantial commitment to recycling.

- We have reduced waste material in our production facilities by 55% since 1990
- In 1992 we became the first car manufacturer to recycle bumpers
- Over 75% of our plastic parts can be recycled
- All of the gaskets and brake-pads are asbestos-free
- There are no ozone-damaging CFCs in our polyurethane products (such as the foam padding in seats, armrests and steering wheels)
- Many of our plants have passed the stringent ISO 14001 test – commonly known as the environmental ISO

MECHANICAL FEATURES

Engines:

- 1.6 MZR Petrol**
- 1598cc in-line 4-cylinder, 16-valve, DOHC, front-mounted, developing 105ps (77kW) at 6000rpm and 145Nm at 4000rpm
 - CO₂ emissions of 144g/km¹ (EC Stage V)
 - Powertrain Control Module (PCM)
 - Battery – 50Ah
 - Alternator – 12V-100A
 - Sequential electronic multi-point fuel injection
 - Sequential Valve Timing System (S-VT)
 - Variable Induction System
- 1.6 MZR Petrol Auto**
- 1598cc in-line 4-cylinder, 16-valve, DOHC, front-mounted, developing 105ps (77kW) at 6000rpm and 145Nm at 4000rpm
 - CO₂ emissions of 171g/km¹ (EC Stage V)
 - Powertrain Control Module (PCM)
 - Battery – 50Ah
 - Alternator – 12V-90A
 - Sequential electronic multi-point fuel injection
 - Sequential Valve Timing System (S-VT)
 - Variable Induction System
- 1.6 Diesel**
- 1560cc in-line 4-cylinder, 8-valve, SOHC, front-mounted, developing 115ps (85kW) at 3600rpm and 270Nm at 1750-2500rpm
 - CO₂ emissions of 115g/km¹ (EC Stage V)
 - Powertrain Control Module (PCM)
 - Battery – 75Ah
 - Alternator – 12V-150A
 - Common-rail fuel injection
 - Diesel Particulate Filter (DPF)
- 2.2 MZR-CD Diesel (185ps)**
- 2184cc in-line 4-cylinder, 16-valve, DOHC, front-mounted, developing 185ps (136kW) at 3500rpm and 400Nm at 1800rpm-3000rpm
 - CO₂ emissions of 142g/km¹ (EC Stage V)
 - Powertrain Control Module (PCM)
 - Battery – 80Ah
 - Alternator – 12V-100A
 - Diesel Particulate Filter (DPF)

Transmission:

- 5- or 6-speed manual – giving precise, positive shift feel to provide a feeling of unity between driver and vehicle (6-speed available on 1.6 Diesel and 2.2 MZR-CD)
- 4-speed automatic (only available on 1.6 MZR)

Body:

- Self-supporting rigid and torsion-resistant all-steel body with defined crush zones for the front and rear sections, stable passenger safety cell with side impact reinforcement in the doors
- Mazda Advanced Impact Distribution and Absorption System (MAIDAS) designed to secure the critical interior space in the event of an accident
- Supplementary Restraint System (SRS) comprising central control unit and crash sensors, seatbelt pre-tensioners, load-limiters and airbag system

Chassis and Suspension:

- Front: Independent suspension with MacPherson struts, 4-point rubber mounting system and liquid-filled bushes
- Rear: E-type multi-link suspension with monotube dampers and low-mounted springs to maximise load compartment space

Brake System:

- Hydraulic, diagonally divided dual-circuit system with power brake unit
- Anti-lock Braking System (ABS) with Electronic Brake-force Distribution (EBD) and Emergency Brake Assist (EBA)
- Front: 278mm (300mm on 2.2 MZR-CD) ventilated disc brakes
- Rear: 265mm (280mm on 2.2 MZR-CD) disc brakes

Which engine should you choose?

Our diesel engines are fitted with a DPF (Diesel Particulate Filter) to reduce particulate matter in exhaust emissions. If you regularly travel short distances then this system may not work to its optimum and as such a petrol engine may be more appropriate for you. Please speak to your local Mazda dealer for guidance when choosing your car.

MODEL AVAILABILITY AND TECHNICAL DATA

Model Availability		1.6 MZR	1.6 MZR Automatic	1.6 Diesel	2.2 MZR-CD (185ps) Diesel
Hatchback:	Tamura	■	■	■	–
	Venture	■	–	■	–
	Sport Nav	–	–	–	■

■ = Available.

Engine Type

	1.6 MZR	1.6 MZR Automatic	1.6 Diesel	2.2 MZR-CD (185ps) Diesel
Displacement (cc)	1598	1598	1560	2184
Bore x stroke (mm)	78.0 x 83.6	78.0 x 83.6	75.0 x 88.3	86.0 x 94.0
Valves per cylinder	4	4	2	4
Maximum output [ps (kW) / rpm]	105 (77) / 6000	105 (77) / 6000	115 (85) / 3600	185 (136) / 3500
Maximum torque (Nm / rpm)	145 / 4000	145 / 4000	270 / 1750	400 / 1800
Compression ratio	10.0	10.0	16.0	16.3

Transmission

Type	5-speed manual	4-speed automatic	6-speed manual	6-speed manual
Gear ratios:				
1st	3.416	2.816	3.727	3.538
2nd	1.842	1.497	2.048	1.913
3rd	1.290	1.000	1.258	1.290
4th	0.972	0.725	0.919	0.926
5th	0.775	–	0.738	0.853
6th	–	–	0.622	0.711
Reverse	3.214	2.648	3.818	3.831
Final gear ratio	4.105	4.416	3.611	3.095

Steering

Steering gear	Electric power-assisted rack and pinion steering, engine speed sensing			
Minimum turning circle (wall-to-wall) (m)	10.9	10.9	10.9	10.9

Performance and Economy

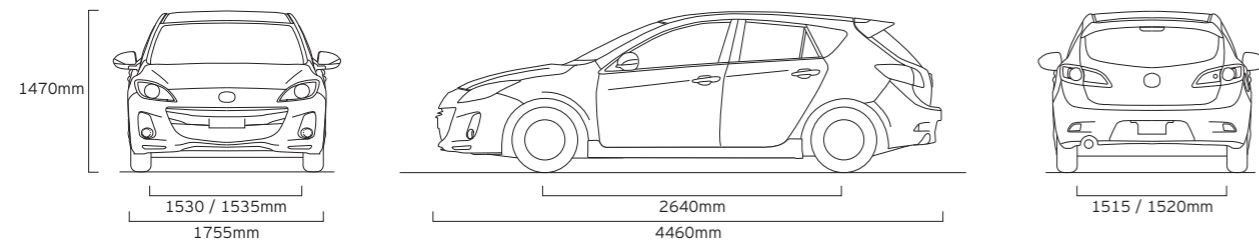
	1.6 MZR	1.6 MZR Automatic	1.6 Diesel	2.2 MZR-CD (185ps) Diesel
Acceleration (0-62mph in sec)	12.2	13.1	11.0	8.2
Top speed (mph):	112	107	116	132
Fuel consumption ¹ [mpg (l/100km)]:				
Urban	34.4 (8.2)	28.5 (9.9)	53.3 (5.3)	40.9 (6.9)
Extra Urban	55.4 (5.1)	47.1 (6.0)	74.3 (3.8)	62.8 (4.5)
Combined	44.8 (6.3)	38.2 (7.4)	65.7 (4.3)	52.3 (5.4)
CO ₂ emissions ¹ (g/km)	144	171	115	142
EC emission level	EC Stage V	EC Stage V	EC Stage V	EC Stage V
Recommended fuel	----- Unleaded 95 RON -----		Diesel	Diesel
Fuel tank capacity (litres)	55	55	55	55

¹ Fuel consumption and CO₂ emissions figures are obtained under standardised test conditions defined in European Legislation using a representative model. This allows direct comparison between different models from different manufacturers, but may not represent the actual fuel consumption achieved in 'real world' driving conditions. More information is available at <http://carfueldata.direct.gov.uk>

TECHNICAL DATA

Dimensions and Weights	1.6 MZR	1.6 MZR Automatic	1.6 Diesel	2.2 MZR-CD (185ps) Diesel
Overall length / width / height (mm)	----- 4460 / 1755 / 1470 -----			
Ground clearance (mm) between the axles – unladen	155	155	155	150
Front track / Rear track (mm)	1530 / 1515	1530 / 1515	1530 / 1515	1530 / 1515
Wheelbase (mm)	2640	2640	2640	2640
Front headroom / leg room / shoulder room (mm)	----- 987 / 1068 / 1395 -----			
Rear headroom / leg room / shoulder room (mm)	----- 964 / 919 / 1371 -----			
Cargo volume, acc. to VDA (l):	5-seat mode (to belt line)			
	340	340	340	340
Ventilated front disc diameter (mm)	278	278	278	300
Rear disc diameter (mm)	265	265	265	280
Kerb weight (kg) max. (excluding driver)	1271	1297	1309	1453
Permitted gross vehicle weight (kg):	Total			
	1770	1790	1830	1965
	Front / rear			
	900 / 870	925 / 865	970 / 860	1105 / 860
Towing limit (kg)*:	Unbraked			
	550	550	600	600
	Braked			
	930	550	1300	1500
Maximum roof load (kg)	75	75	75	75

*Towing capacity is based on a 12% gradient and tested in accordance with 92/21/EEC as amended by 95/48/EC.



TECHNICAL DATA

Safety and Security	Tamura	Venture	Sport Nav
Mazda Advanced Impact Distribution and Absorption System (MAIDAS)	●	●	●
Supplementary Restraint System (SRS) – Central control unit and crash sensors, front seatbelt pre-tensioners, load-limiters and airbag system	●	●	●
Four-Wheel Anti-lock Braking System (4W-ABS) with Electronic Brake-force Distribution (EBD) and Emergency Brake Assist (EBA)	●	●	●
Dynamic Stability Control (DSC) with Traction Control System (TCS)	●	●	●
Emergency Stop Signal system (ESS): Automatic activation of flashing hazard lights when emergency braking is applied	●	●	●
Driver and front passenger airbags	●	●	●
Front side airbags	●	●	●
Front and rear curtain airbags	●	●	●
Active front head restraints	●	●	●
Seatbelt reminder (sound warning)	●	●	●
Seatbelts: Front, 3-point (ELR) x 2 with pre-tensioners	●	●	●
Rear, 3-point (ELR) x 3	●	●	●
ISOFIX child seat anchorages, attached to outer rear seats	●	●	●
Thatcham Category 1 alarm and immobiliser system	●	●	●

Additional Safety and Security Options

Baby and child seats:	Britax Römer Baby Safe ISOFIX Plus, for up to 13kg	Please contact your dealer for further information and availability.
	Britax Römer ISOFIX Duo Plus, for 9-18kg	
	Britax Römer Kid Plus, for 15-36kg	
Child seat pillow:	Duo Plus	
Passenger airbag cut-off switch		
LED daytime running lights		

● = Standard.

EQUIPMENT

Exterior		Tamura	Venture	Sport Nav
Tyres and wheels:	205/50 R17 with 7.0J 17" Alloy wheels – design 143	●	–	–
	205/50 R17 with 7.0J 17" Bright Alloy wheels	–	●	●
	Space saver spare wheel	●	●	●
Bumpers, front and rear:	Body-coloured	●	●	●
Rear spoiler:	Body-coloured, rear roof spoiler	●	●	●
Side skirts		●	●	●
Door handles:	Body-coloured	●	●	●
Privacy glass:	Rear side and rear windows	–	●	●
Wipers:	Front, adjustable speed with intermittent wipe and electric wash	●	–	–
	Front, rain-sensing wipers	–	●	●
	Rear, adjustable speed with intermittent wipe	●	●	●
Heated windscreen		–	–	●
Headlights:	Halogen	●	●	●
Dusk-sensing headlights		–	●	●
Front fog lights		●	●	●
Rear lights:	LED technology	–	–	●
Rear brake light, high-mounted		●	●	●
Rear fog light		●	●	●
Parking distance sensors:	Rear	–	●	●
Door mirrors:	Electrically-adjustable, heated power-folding mirrors, body-coloured	●	–	–
	Electrically-adjustable, heated power-folding mirrors, Black Mica	–	●	●
Mica / Metallic / Pearlescent paint		○	○	○

● = Standard; ○ = Option available at extra cost.

EQUIPMENT

Additional Exterior Options

Tyres and wheels*:	See page 23 for wheel options
Space saver wheel kit	
Lowering suspension kit by Eibach	
Bumpers, front and rear:	Door side protectors
	Rear bumper step foil
MPS wing spoiler	
Side indicator ring:	Chrome finish
Sports exhaust system	
Mudflaps:	Front, black
	Rear, black
Door mirror covers:	Carbon
	Piano black
Rear lights:	LED technology
Parking distance sensor:	Front
Tow bar	
Roof rails	
Thule roof box	
Thule ProRide Bike carrier attachment	

Please contact your dealer for further information and availability.

*Increasing the wheel rim size will require a corresponding increase in tyre size. Please contact your Mazda dealer for further information.



EQUIPMENT

Interior Features		Tamura	Venture	Sport Nav
Seats and integral head restraint:	Driver's, reclining and height adjustment	●	●	●
	Driver's, lumbar adjustment	●	●	●
	Sports bucket-type front seats	–	●	●
	Heated front seats	–	●	●
Rear seats:	60/40 split rear seats	●	●	●
	Centre armrest	●	●	●
Steering wheel:	Leather	●	●	●
	Tilt and height adjustment	●	●	●
Gear knob:	Leather	●	●	●
Door inner handles:	Front and rear, bright	●	●	●
Front and rear standard scuff plates		●	●	●
Grab handles:	Front passenger's and two rear with coat hooks	●	●	●
Audio systems:	AM/FM radio / CD player, six speakers	●	●	●
	Steering wheel audio controls	●	●	●
	Auxiliary (AUX) input jack and power outlet (located in centre armrest)	●	●	●
	USB connector allowing iPod® connectivity ³⁾	–	●	●
Integrated 5.8" colour touch screen display:	For display of audio, Bluetooth® and navigation information	–	●	●
Mazda navigation system:	Powered by the latest TomTom technology includes advanced lane guidance, IQ routes, voice control and a 3 month free subscription to TomTom LIVE services including TomTom places, HD-traffic and speed camera alerts (after 3 months a subscription can be purchased from TomTom)	–	●	●
Integrated Bluetooth® ¹⁾		–	●	●
Meter set:	Multi-Information Display (MID) including trip computer, digital tachometer, fuel gauge, and water and exterior temperature gauges	●	●	●
	Continuously-lit white graphic meters with grey illumination	●	●	●
	Gear Shift Indicator	● ²⁾	●	●
Digital clock		●	●	●
Overhead console with sunglasses holder		●	●	●
Headlight on reminder (sound warning)		●	●	●
Front centre console with storage box; two lidded cup holders		●	●	●
Further storage spaces:	Glovebox, with illumination	●	●	●
	Seatback pocket (passenger side)	●	●	●
	Door pockets (front and rear doors)	●	●	●
Welcome Mode Lighting:	Standard (features cockpit dome light and 'action' illumination of audio system and, if specified, climate control air conditioning)	●	–	–
	Enhanced door assist grip illumination (features sequential 'driver welcome' illumination, and 'action' illumination of audio system and climate control air conditioning)	–	●	●
Inner mirror:	Day / night	●	–	–
	Auto-dimming rear-view mirror	–	●	●
Heater ducts, rear		●	●	●
Pollen filter		●	●	●

● = Standard; ¹⁾ Please refer to www.tomtom.com/phones/compatibility for phone compatibility. ²⁾ Not available on Mazda3 1.6 Tamura Automatic. ³⁾ iPod® connectivity is via an accessory iPod® adapter, please consult your local mazda dealer.

EQUIPMENT

Additional Interior Options		Tamura	Venture	Sport Nav
Foot pedals:	Aluminium	●	●	●
Footrest:	Aluminium	●	●	●
Gear knob:	Leather, chrome finish	●	●	●
Inner door handles:	Front and rear, silver	●	●	●
Door speaker bezels:	Front and rear, silver	●	●	●
Sunblinds:	For rear side windows	●	●	●
	For rear window, hatchback	●	●	●
Scuff plates:	Front and rear, with illuminated front 'Mazda3' logo	●	●	●
Handbrake:	Cover, brushed aluminium finish	●	●	●
Audio:	iPod USB adapter	●	●	●
Satellite navigation:	Pioneer satellite navigation system	●	●	●
Mobile phone console:	Hands-free kit with touch-screen display, voice control and Bluetooth®	●	●	●
Cigar lighter		●	●	●
Ashtray		●	●	●
Storage compartment:	Anti-slip mat	●	●	●
	Boot liner	●	●	●
	Boot net	●	●	●
	Boot storage shelf	●	●	●
Dog guard		●	●	●
Baby care mirror		●	●	●
First aid kit		●	●	●
Warning triangle		●	●	●
Welcome mode lighting:	For front, driver and passenger footwell	●	●	●

Please contact your dealer for further information and availability.

Comfort and Convenience		Tamura	Venture	Sport Nav
Remote central locking with deadlocking (with jack-knife type retractable key)		●	●	●
Power steering:	Electric	●	●	●
Cruise control:	Steering wheel operated	–	●	●
Electric windows:	Front and rear, with one-touch auto down / up, timer function on driver's side	●	●	●
Air-conditioning:	Dual-zone climate control	●	●	●
Sunvisors:	Driver's and passenger's with covered vanity mirror and illumination	●	●	●

Additional Comfort and Convenience Options

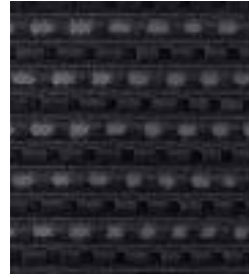
Front and rear floor mats:	Carpet floor mat, 'standard', black with 'Mazda3' logo	●	●	●
	Carpet floor mat, 'luxury', black with 'Mazda3' logo	●	●	●

Please contact your dealer for further information and availability.

● = Standard.



COLOURS AND SEAT TRIMS



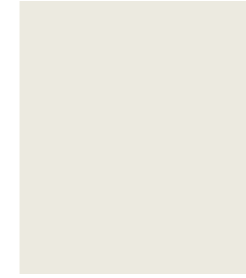
Black cloth (Tamura)



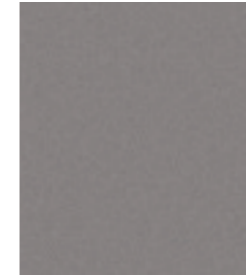
Black sports cloth (Venture / Sport Nav)

Model		Tamura	Venture	Sport Nav
Trim		Black cloth	Black sports cloth	Black sports cloth
Solid Body Colour				
Arctic White	(A4D) / (A7H)	■	■	■
Mica and Metallic Body Colours*				
Aluminium Silver Metallic	(38P) / (42F)	■	■	■
Black Mica	(16W)	■	■	■
Crystal White Pearlescent	(34K) / (42E)	■	■	■
Graphite Mica	(38R) / (43R)	■	■	■
Indigo Lights Mica**	(38K) / (43K)	■	■	■
Velocity Red Mica	(27A) / (42D)	■	■	■
Zeal Red Mica	(43D)	-	■	■

■ = Available. *Option available at extra cost. **Availability limited, please speak to your local dealer for further information



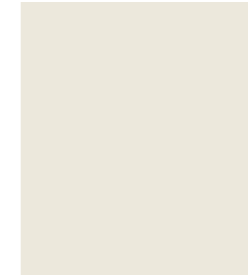
Arctic White



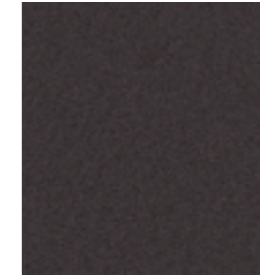
Aluminium Silver Metallic



Black Mica



Crystal White Pearlescent



Graphite Mica



Indigo Lights Mica



Velocity Red Mica



Zeal Red Mica

