



MAZDA CX-5









We explore cities and winding country roads.

Corners hugged and throttles revved.

Windows down, radio loud, no particular place to go.

Always forward, defying the wind.

I am the embodiment of Jinba Ittai.

You, the heart behind the wheel.

We were always meant to connect,

like a horse and rider,

car and driver as one.

Together, we are stronger.

We have a bond that words alone cannot describe.

We never drive alone.

We drive together.





HIROSHIMA SPIRIT

Mazda shares a special history and spirit with Hiroshima, Japan. As the birthplace of Mazda, Hiroshima constantly inspires us to rise above any challenge, pushing us to achieve more than anyone could have imagined. We have built a global company from the ground up. We have developed innovations that others deemed impossible, from the rotary engine to Skyactiv Technology and beyond. Most of all, we have never strayed from our belief in the power of human potential. Giving all of ourselves, using our hands to craft and create things that matter, that have soul, that transfer our energy to you. To heighten your state of being.

The spirit and commitment of the craftsmen is reflected in the Japanese Kodoki bowl's sublime beauty. Its aesthetic appeal comes through the thousands of facets, each a fingerprint of the craftsmen's energy.

KODO: SOUL OF MOTION

Our design philosophy is simple, yet highly challenging to accomplish: Capture energy in motion, even at a standstill. With curves and angles so striking, they command your attention through a mere glance. Exciting you by the anticipation of what's to come. Eliciting this kind of instant emotional response requires a human touch. Created for humans by humans. Hands on clay, shaping form with warmth and precision. Eliminating all that is unnecessary, leaving only what is beautiful. Transferring the energy of the maker into every nuance. We call this Kodo: Soul of Motion design. A dynamic sense of motion that urges you to get behind the wheel and experience the unique energy that can only come from a Mazda.



Kodo Design is our philosophy of breathing life and personality into our cars. It starts by clay modelers who use their skills and emotions to shape and transform ideas into life sized models that have a soul and shape that moves people's hearts.

MAZDA CX-5

Experience the Mazda CX-5. A new dimension of driving pleasure. Engineered and crafted with utmost care to the tiniest detail, the Mazda CX-5 makes an impression both visually and from a driver's perspective. The bold exterior shape creates a sense of vitality, elevating motion into an art form. Every sculpted form reflects the light in such a way that fascinates and teases the driver to get inside and discover its luxurious and human-centric interior design.

Every detail is designed by the precision of human hands, crafted with you in mind. Through the designer's purely emotional approach, a relationship of complete oneness is felt with the Mazda CX-5, giving way to an effortless and engaging driving experience.





MAZDA TAKUMI:
SUPERIOR CRAFTSMANSHIP

These are the artisans and craftsmen who sharpen their skills for years, even decades, to achieve mastery. Their passion, patience and dedication to their craft is poured into every Mazda through the human touch. An emotional impression is made that no computer or equation can produce. Every detail inside the Mazda CX-5 is a testament to the Takumi's proficiency. This transference of energy creates an environment that inspires and a feeling that lasts even after your drive is over. From designer to driver, this connection ultimately creates an enriching, emotional bond between you and your Mazda.



CONNECTING CAR AND DRIVER

Every Mazda aspires to the same single goal—oneness between the vehicle and its driver. When you experience this seamless connection, your senses become heightened. You engage with the moment and leave all distractions behind. You feel energised. Rejuvenated. Better than when you first stepped in the car—a feeling that lasts long after the drive. From the meticulous consideration of our design to how our cars effortlessly respond to even your slightest direction, each detail in every Mazda offers you a pure driving experience.

EFFORTLESS CONNECTIVITY

Eliminating distractions is a key consideration in our approach to design. While keeping you focused on the road, the Mazda CX-5 provides a suite of intuitive interactivity features. Every element is situated within reach to minimise interference. A completely synchronised environment is ensured by the effortless control of the 8" Centre Display and the intuitive Multimedia Commander. To add to your comfort, the Active Driving Display, standard on Sport and GT Sport models enhances safety by projecting navigation system route guidance and vehicle status, giving you a strong feeling of control.



CONNECTED DRIVE.
CONNECTED WORLD.

While keeping you focused on the road, the Mazda CX-5 provides plenty of intuitive interactive features. Every element is situated within reach to minimise interference. Synchronising your mobile phone, accessing internet radio or your favourite music via Apple Carplay® or Android Auto™ is now easier than ever through the Mazda Connect entertainment system. Communication between you and your vehicle becomes second nature.



RESPONSIVE. AND RESPONSIBLE.

Only a company this obsessed with creating the ideal driving experience could engineer Skyactiv Technology. From the chassis to the transmission to the engine and beyond, we've designed every single aspect of our cars to be responsive and efficient anywhere you drive it. Combining outstanding environmental and safety performance without sacrificing the joy of driving. Rejuvenating your spirit, connecting you seamlessly with your vehicle and the road for a more extraordinary drive.





IDEAL DRIVING IN EVERY CONDITION

Control: it's the foundation of why we engineer our All-Wheel-Drive system with Off-Road Mode. Giving you confidence on and off the road, in any condition, i-Activ AWD actively monitors all road and environment conditions at all times, by using 27 sensors so you can enjoy a truly relaxing driving experience.



CONFIDENCE IN EVERY DIRECTION

Avoiding an accident in the first place is always the safest route. With the available i-Activsense suite of safety features, sophisticated safety innovations alert you to hazards and help you avoid collisions - or lessen their impact. Features such as the Adaptive Front lighting System and Blind Spot Monitoring with Rear Cross Traffic Alert help improve your visibility and awareness of the road. More confident driving, so you can feel focused and engaged with every drive you take.



SIGNATURE SOUND

Music is referred to as the art of the cosmos. A captivating experience for your most divine sense: hearing. The desire by the acoustic engineers at Mazda is to reproduce sound that is as realistic to a live performance as possible. Only by thoroughly measuring spatial effects, vibrations, delays and reflections of sound, were we able to recreate the feeling of a concert hall within the cabin of the Mazda CX-5. Together with Bose, we're setting the stage for an energising aural experience that is worlds away from anything you've heard before.

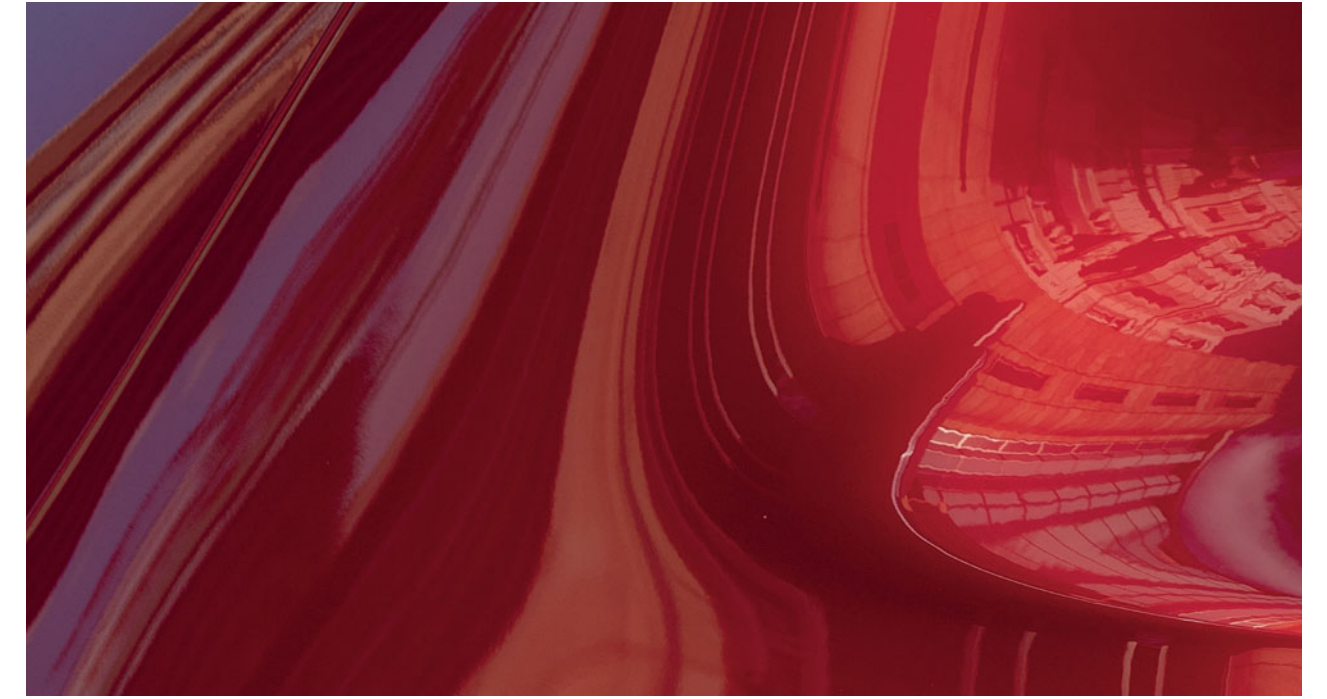
Built to achieve a "spirit of comfort", Hakuju Hall is an intimate concert space in Tokyo, Japan where the audience can truly experience the music and every intonation. Designed to incorporate a "health" aspect, this unique venue provides unrivaled acoustics from any seat in the house.

THE ART OF SEDUCTION

The colour on the Mazda CX-5 is one of the first things that will catch your attention. Its delicate beauty and strong character are endorsed by the craft of Takumi-Nuri, Mazda's high-quality painting technology, which makes the Kodo design come alive and amplifies the beauty of every line. Takumi-Nuri balances depth and glossiness to give the impression of a hand-painted concept car. It enables the exceptional vividness and depth achieved in the signature Soul Red Crystal Metallic and Machine Grey Metallic premium colours.



Machine Grey Metallic



Soul Red Crystal Metallic

EXQUISITELY CRAFTED DOWN TO THE LAST STITCH

Nothing quite tempts the senses like touch. The contact of soft textures, solid stitching and a form that embraces you. Every inch of our carefully crafted upholstery is designed to make your driving experience better. Expert fabricators have created pieces of distinct and expressive design, such as the Brown Nappa leather seats standard on GT Sport models. An elegant level of refinement in the Mazda CX-5 meets expectations even from the most demanding of drivers, in terms of both taste and comfort. The front ventilated seats featured in GT Sport models are also designed to keep your body at a comfortable temperature at all times.





THE ART OF MOTION

The closer you examine the Mazda CX-5, the more intriguing our story becomes. Mazda's Kodo design philosophy is evident across every aspect of the Mazda CX-5 right down to its alloy wheels.

DESIGNED TO COMPLEMENT YOUR MAZDA CX-5. AND YOU.

Mazda has created thoughtfully designed accessories that perform seamlessly with your Mazda CX-5.



Silver mirror caps



LED door illumination– Mazda logo puddle light



Front Under Trim



OUR COMMITMENT TO YOU AND YOUR MAZDA

Service and Warranties

Just like the cars themselves, the services we offer are designed to provide you with a first-class ownership experience. Every new vehicle is covered by a 3-year warranty for up to 60,000 miles, including a 3-year paintwork warranty, and a 12-year perforation warranty. We also offer Extended Warranties to extend the cover for your Mazda. Mazda Roadside Assistance offers cover in the event you require breakdown assistance, your vehicle is stolen or is involved in an accident. The maximum service interval for your Mazda is 12,500 miles or 12 months whichever occurs first, however, the servicing intervals may reduce based on the style of driving and the conditions under which your vehicle is operated.

Free Mazda Accident Aftercare

Mazda Accident Aftercare is designed to assist you following a road traffic accident. Call Mazda First after an accident and they will liaise directly with your insurer to process the claim and ensure that your vehicle is repaired at a Mazda approved bodyshop using only genuine Mazda parts. Additional benefits include providing you with a free courtesy car and maintaining your Mazda warranties.

Our commitment to you and your Mazda

Mazda makes cars that excite, look beautiful, are fun to drive and make you want to drive them again and again. We are passionate about delivering complete motoring confidence and a first-rate ownership experience.

Finance

As well as vehicle warranty and service plans, we offer finance packages to help ensure a rewarding ownership experience. Mazda Financial Services provides a variety of finance products to suit the needs of both private and business customers.

What you can expect from Mazda Financial Services:

- Assistance in renewing your car. We'll help you choose the right finance package to enable you to renew your Mazda as often as you would like.
- Fixed Interest Rates. The interest rate on your loan is fixed for the duration of the agreement.
- Flexible terms tailored to your motoring needs. As specialists in Mazda vehicles, we aim to tailor a finance package to both your budget and your motoring and ownership needs.

Please ask your Sales Executive for a tailor-made finance quote for your new car.

Mazda Financial Services finance plans:

Mazda Conditional Sale:

The traditional way of buying your car. Mazda Conditional Sale is a simple way of financing that provides you with certainty due to a fixed interest rate and fixed monthly repayments throughout the agreement. Your initial deposit and repayment period can be structured to help meet your budget and the length of time you expect to keep the car. You can trade in your existing vehicle and put this towards the initial deposit, or if you wish, just put down a cash deposit. At the end of your contract, when all repayments have been made, the car is yours.

Mazda Personal Contract Purchase:

The finance plan that helps you change your Mazda at more regular intervals. Personal Contract Purchase is similar to a Conditional Sale agreement but with additional flexibility since part of the vehicle cost is deferred until the end of the agreement which may give you the benefit of lower monthly repayments. The deferred amount is known as the Guaranteed Future Value or Optional Final Payment. At the end of your contract, when all repayments have been made, you then have three options:

- Renew: Choose another Mazda. Use any excess value above the Optional Final Payment towards a deposit for another Mazda. You can trade in your car at any time or sell it privately having settled your account
- Retain: Keep the car. Simply pay the Optional Final Payment, and the car is yours
- Return your car: There's nothing more to pay if the car's in good condition and within the agreed mileage

Mazda Contract Hire

Mazda Financial Services Contract Hire offers low running costs with market driven residuals, resulting in extremely competitive costs for businesses and individuals. To find out more about the benefits of Mazda Financial Services Contract Hire, please speak to your Mazda dealer or visit www.mazda.co.uk.

Finance subject to status. Terms and conditions apply. 18s and over. Guarantee may be required. Mazda Financial Services RH1 1SR.

Customer Experience

Start your journey with Mazda using the Configurator on the Mazda website. It lets you customise a digital vehicle, letting you choose from a selection of engines, trims, exterior colours and accessories. You can also explore Facebook, Twitter and YouTube for even more Mazda related material. Whatever journey you take with Mazda, we'll make sure it's a unique and gratifying experience.

Skyactiv Technology – helping you stay efficient

We develop exciting cars that are fun to drive, and we are equally committed to the environment for the creation of a sustainable future for all. Our ongoing sustainability programmes are dedicated to the development of clean technologies. Our Skyactiv Technology range includes engines, transmissions, chassis and body designs, which deliver fuel-efficient driving. Our engines deliver the perfect combination of performance and improved driving economy by being lighter and more fuel efficient than many of our competitors.

Looking for more information?

Learn more about our dedication to deliver a unique customer experience online at:



www.mazda.co.uk



facebook.com/mazdauk



twitter.com/mazda_uk



youtube.com/mazdauk



SPECIFICATIONS

		PETROL		DIESEL			
		2.0 Skyactiv-G Petrol 2WD 165ps Manual	2.0 Skyactiv-G Petrol 2WD 165ps Automatic	2.2 Skyactiv-D Diesel 2WD 150ps Manual	2.2 Skyactiv-D Diesel 2WD 150ps Automatic	2.2 Skyactiv-D Diesel AWD 184ps Manual	2.2 Skyactiv-D Diesel AWD 184ps Automatic
EC emission level		Euro Stage6d	Euro Stage6d	Euro Stage6d Temp	Euro Stage6d Temp	Euro Stage6d Temp	Euro Stage6d Temp
WLTP Values:							
Fuel consumption [mpg / (l/100 km)]:	Low	33.6 (8.4) / 32.8 (8.6)	29.1 (9.7)	44.1 (6.4) / 46.3 (6.1)	37.2 (7.6)	39.2 (7.2)	33.6 (8.4)
	Medium	41.5 (6.8) / 42.8 (6.6)	40.4 (7.0)	50.4 (5.6) / 51.4 (5.5)	44.8 (6.3)	42.8 (6.6)	40.9 (6.9)
	High	44.8 (6.3) / 45.6 (6.2)	42.8 (6.6)	55.4 (5.1) / 56.5 (5.0)	50.4 (5.6)	47.1 (6.0)	46.3 (6.1)
	Extra High	36.2 (7.8) / 37.2 (7.6)	34.4 (8.2)	44.1 (6.4) / 44.8 (6.3)	40.4 (7.0)	41.5 (6.8)	38.2 (7.4)
	Combined	39.2 (7.2) / 39.8 (7.1)	36.7 (7.7)	47.9 (5.9) / 49.6 (5.7)	43.5 (6.5)	42.8 (6.6)	39.8 (7.1)
CO ₂ emissions (g/km)		163 / 160	173	154 / 151	171	175	186

Figures shown are for comparability purposes; only compare fuel consumption and CO₂ figures with other cars tested to the same technical procedures. These figures may not reflect real life driving results, which will depend upon a number of factors including the accessories fitted (post-registration), variations in weather, driving styles and vehicle load. All figures quoted are derived from the latest WLTP test cycle. Figures on the left apply to models fitted with 17-inch wheels as standard (SE-L), whilst figures on the right apply to models fitted with 19-inch wheels as standard (Sport and GT Sport).

Mazda Motors UK reserves the right to introduce changes in specification and equipment due to its ongoing product development. Colour and trim samples shown in this brochure may vary from the actual colours because of the limitations of the printing process. Models shown may not be to UK specification. It is recommended that you consult your Mazda dealer when referring to these. Apple CarPlay®, Android Auto™ and Bose are registered trademarks in the U.S. and other countries. Used with permission. The Bluetooth® word mark and logos are owned by the Bluetooth SIG, Inc. and any use of such marks by Mazda Motor Company is under licence. Other trademarks and trade names are those of their respective owners.

Internet: www.mazda.co.uk
 Mazda Helpline: 03457 48 48 48
 UK-EN / 2314

MAZDA MOTORS UK LTD