



THE MINI RANGE.

FIVE PERSONALITIES, THE SAME MINI SPIRIT.

BROCHURE. JANUARY 2022.



WELCOME TO MINI.

When you go for a MINI, you go for choice: Is yours going to be a MINI 3-door or 5-door Hatch, a slick MINI Convertible, a stylish MINI Clubman or an adventurous MINI Countryman? Which engine will you choose between One, Cooper and Cooper S? Which style will you select: Classic, Sport or Exclusive?

You can now define the specs of your MINI in 5 easy steps. For more information, please [click here](#).

Have a look around, and take all the time you need. There's so much going on with MINI – the first time you get behind the wheel there's so much to discover; engines, styles, wheels and upholsteries, paints, technology and comfort packages as well as additional standard and optional equipment. The list goes on and on, so you can really make your MINI truly yours; which is why we've put together a selection of highlights to help you personalise your MINI.

The range may be broad, but the unmistakable design and iconic go-kart feeling are the hallmarks of MINI.

CONTENTS.

WHO WE ARE

FIVE STEPS TO YOUR MINI

STEP 1: PICK YOUR MODEL

STEP 2: CHOOSE YOUR PERFORMANCE

STEP 3: SELECT YOUR STYLE

STEP 4: ADD SOME PACKS

STEP 5: PERSONALISE

THE MINI 3-DOOR AND 5-DOOR HATCH

THE MINI ELECTRIC

THE MINI CONVERTIBLE

THE NEW MINI HATCH, CONVERTIBLE AND ELECTRIC
SHADOW EDITION

THE MINI CLUBMAN

THE MINI COUNTRYMAN

THE MINI COUNTRYMAN PLUG-IN HYBRID

THE MINI CLUBMAN AND COUNTRYMAN
SHADOW EDITION

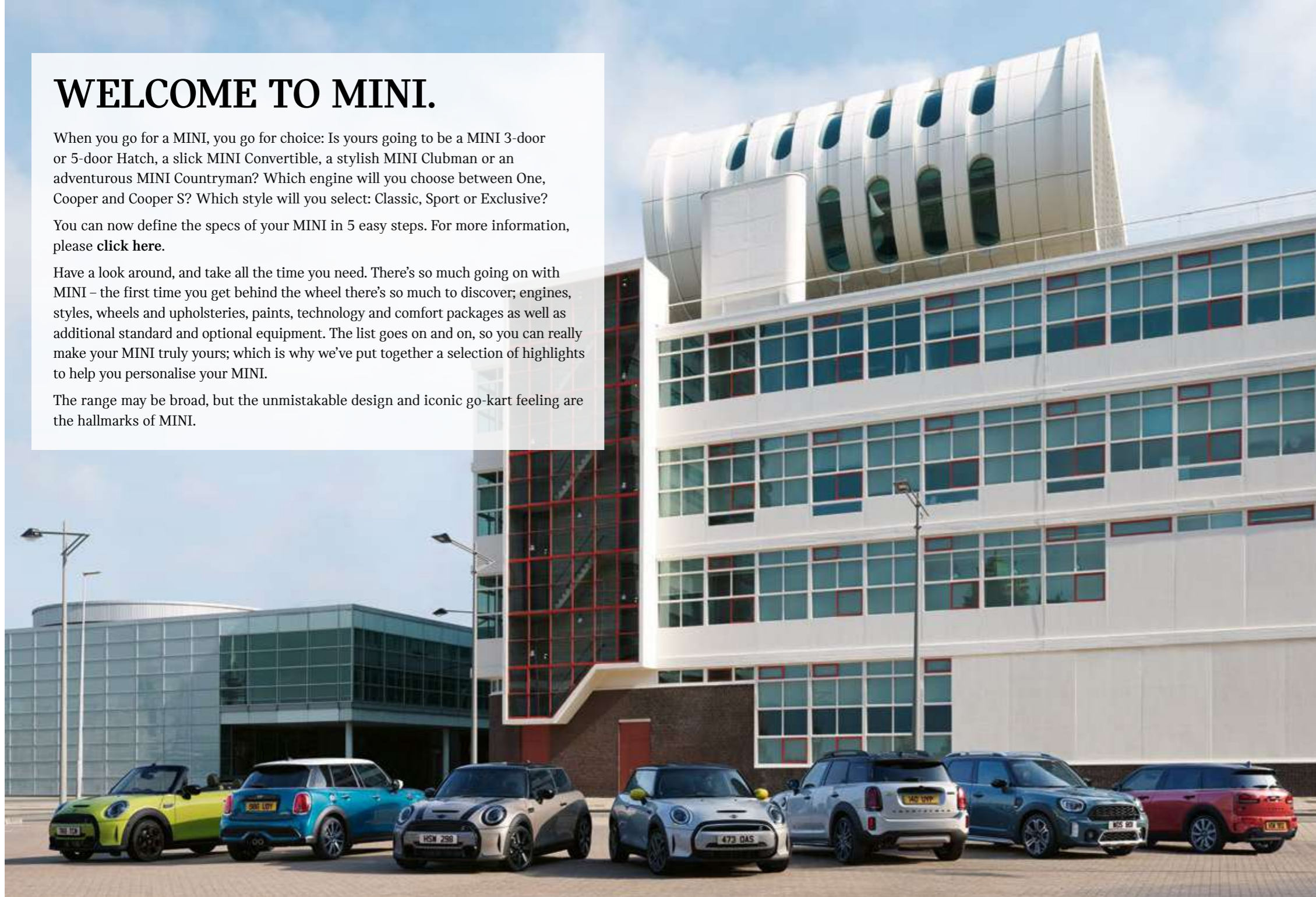
JOHN COOPER WORKS

SAFETY RUNS IN THE FAMILY

THE MINI APP

GENUINE MINI ACCESSORIES

TECHNICAL DATA



WHO WE ARE.

While you've probably heard of MINI already, what you might not know is that we're much more than the little British car with a big personality. We've changed over the years.

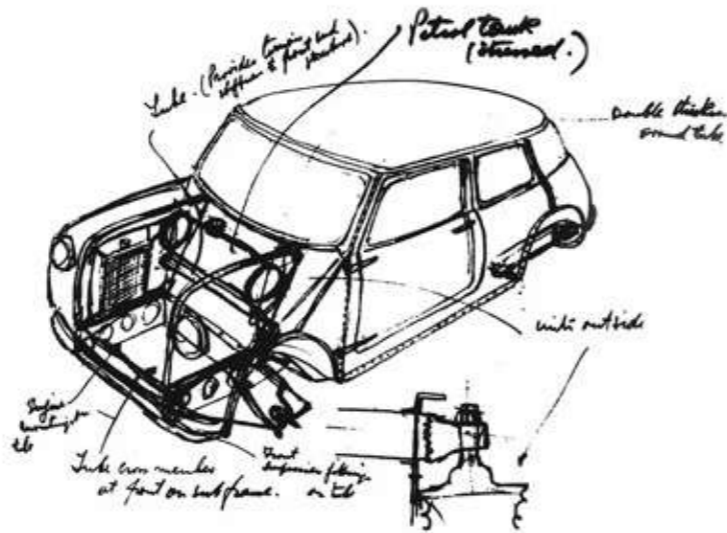
Following its ground-breaking launch in 1959, MINI established itself as the definitive go to small car. For over 60 years, the MINI has made the revolutionary routine: it has broken all the old rules and set new standards. Its unmistakable design and iconic go-kart feeling are practically the only traditions it won't break with.

MINI has grown from one car, to five. Each with its own personality, all bound by the same MINI spirit of re-invention. Our models include the MINI 3-door and 5-door Hatch, the MINI Convertible, the MINI Clubman and the MINI Countryman.

The MINI Hatch, available with both 3 doors and 5 doors, is an urban car which sticks out from the crowd, whilst the MINI Convertible is a free spirit, for those who enjoy driving with the top down, taking spontaneous shortcuts, exploring the city and its vibrant outer edges. The MINI Clubman knows the value of first impressions – it's stylish and superbly crafted, yet very practical; and the MINI Countryman is an adventurer – a versatile car with off-road capabilities, ideal for longer journeys. It has loads of space inside so you can take your family with you as well as plenty of luggage. For more information about the different models please [click here](#).

Each car is also available in different variants*: One, Cooper and Cooper S. Each variant has a different engine and its own feel behind the wheel. But whichever model you choose, they all have one thing in common: the power and efficiency of MINI TwinPower Turbo technology. For more information about engines and performance please [click here](#).

Each variant is also available in three different styles**: Classic, Sport and Exclusive. MINI Classic models have an extensive list of standard specifications, whilst MINI Sport models are



distinctly sporty and come with John Cooper Works interior and exterior equipment. MINI Exclusive models have a more refined style and include some exclusive MINI Yours interior and exterior features. For more information about the styles please [click here](#).

Let's not forget about John Cooper Works: Offered with the MINI 3-door Hatch, the MINI Convertible, MINI Clubman and MINI Countryman, John Cooper Works models are available as stand-alone offering only – which means they come with their own engine and style. John Cooper Works has always been in a league of its own. Though MINI through and through, it boasts a cult following that is proud of this distinction. Powerful, precise and clearly above the rest, it's the go-kart feeling taken to the extreme; driving even closer to the grit and the grease. For more information about the John Cooper Works models please [click here](#).

Innovation has always been at the heart of what we do and electrifying driving is the natural next step. Thanks to the MINI Electric and the MINI Countryman Plug-in Hybrid, you can get the iconic character of MINI with all the benefits of electric driving. For further details about the MINI Electric please [click here](#), and for more information about the MINI Countryman Plug-in Hybrid please [click here](#).



When Sir Alec Issigonis sketched his initial idea for the Mini on a tablecloth in 1956, his innovative compact design was the perfect response to some of the biggest automotive questions of his era. Almost everything about it was unconventional: he increased the track width as far as he could, mounted the engine transversely, and positioned the instrument cluster centrally for both left and right-hand drive. This ensured maximum space inside the car. The concept was unprecedented – and his revolutionary Mini soon became an icon.

Motorsport legend John Cooper saw star racing potential in the original Mini – so he created a model for the track. Braking, inducing oversteer and then drifting around corners became effortless for rally drivers, thanks to its light weight and short overhangs. Racing around tight bends at high speed, now synonymous with the legendary Mini go-kart feeling, laid the foundation for a succession of spectacular wins at the Monte

Carlo rally. Here, the Mini proved that agile handling beats sheer power, every time. To honour Cooper's vision, the thoroughbreds of the MINI range bear the name John Cooper Works.

The compact design of Sir Alec Issigonis and racing pedigree of John Cooper have defined the Mini from the very beginning and remain hallmarks of every iteration to this day. Their legacy of innovation lives on in the latest MINI – and the cutting-edge technology within.

* Some variants are not available on all cars, for more information please check the [technical data section](#) or contact your MINI Retailer.

** Sport and Exclusive styles are not available on One variants.



FIVE STEPS TO YOUR MINI.

1. PICK YOUR MODEL.



MINI 3-door Hatch



MINI 5-door Hatch



MINI Convertible



MINI Clubman



MINI Countryman

¹ Some exterior paints are not available on all cars, for more information please check the exterior paint colours page or contact your MINI Retailer.

² For more information about the single options available, please click here, refer to the individual models price lists or speak to your MINI Retailer.

2. CHOOSE YOUR PERFORMANCE.

ONE

1.5l 3-cylinder petrol engine

COOPER

1.5l 3-cylinder petrol engine

COOPER S

2.0l 4-cylinder petrol engine

3. SELECT YOUR STYLE.

CLASSIC

SPORT

EXCLUSIVE

4. ADD SOME PACKS.

COMFORT PACKAGES



NAVIGATION PACKAGES



DRIVING ASSISTANT PACK



5. PERSONALISE.

Exterior colours¹:



Contrast roof and mirror caps colours:



Single options²:

- Adaptive LED headlights
- Darkened rear glass
- Panoramic glass sunroof
- Automatic gearbox

1. PICK YOUR MODEL.



Model featured: The MINI 3-door Hatch Cooper S Exclusive with optional Rooftop Grey metallic exterior paint, black roof and mirror caps, black bonnet stripes, Piano Black Exterior, 18" Pulse Spoke alloy wheels in two-tone and Adaptive LED headlights.

The MINI 3-door Hatch is a true trailblazer. Committed to standing out from the crowd, it's expressive and self-assured – the choice for unconventional types. The MINI Hatch is made to enjoy urban life to the full. Compact on the outside, with short overhangs, it has a small turning circle which is handy for nimble manoeuvring in the concrete jungle, and offers room for four people.



Model featured: The MINI 5-door Hatch Cooper S Classic with optional Island Blue exterior paint, white roof and mirror caps, white bonnet stripes, 17" Scissor Spoke alloy wheels in two-tone and Adaptive LED headlights.

The MINI 5-door Hatch is 16 centimetres longer than the 3-door and has two extra doors which open up unexpected opportunities: five seats, noticeably more legroom in the back and 30% more luggage space. Ideal for the city, the sporty go-kart feeling makes it fun to drive around tight corners and helps you make your own way through narrow lanes and heavy traffic.



Model featured: The MINI Convertible Cooper S Classic with optional Zesty Yellow exterior paint, black mirror caps, Adaptive LED headlights, 17" Pedal Spoke alloy wheels in black and Light Chequered upholstery.

The MINI Convertible is a free spirit. With four seats and a fully electric soft-top, it's perfect for an open-air drive with your friends. Life with the top down is always animated, exciting and fresh. Prepare to live a life packed with impulse and unbridled energy – it's a non-stop thrill behind the wheel for those who know there's always something else to feel.



Model featured: MINI Clubman Cooper S Exclusive with optional Indian Summer Red exterior paint, black roof and mirror caps and 18" Multiray Spoke alloy wheels.

The MINI Clubman, sophisticated and quintessentially urban, is artfully constructed with practicality in mind. Being 4.25 metres long, it's a step up in size and in functionality, with a roomy interior superbly crafted from top-quality materials. It is mature and worldly in its outlook, a connoisseur of understated style and robust craftsmanship. And with its six doors – including split rear doors – and seating for five, it's perfect for long and short trips.



Model featured: The MINI Countryman Cooper S ALL4 Exclusive with optional Sage Green metallic exterior paint, black roof and mirror caps, black bonnet stripes, Piano Black Exterior, ALL4 Exterior Optic Pack, 19" Turnstile Spoke alloy wheels in two-tone and Adaptive LED headlights.

The MINI Countryman is an adventurer. Equipped with a go-anywhere attitude, it transforms from undercover urbanite to intrepid explorer in an instant. Just under 4.3 metres long, it is a versatile Sport Activity Vehicle which is also optionally available with ALL4 all-wheel-drive. Offering ample room for five people, luggage and all those memories you pick up on the way, the MINI Countryman is ideal for an active lifestyle with your family.

2. CHOOSE YOUR PERFORMANCE.

ONE

Only available on the MINI 3-door and 5-door Hatch in Classic style, the One has a 1.5l 3-cylinder petrol engine which delivers 102 hp/75 kW and features MINI TwinPower Turbo technology. The go-kart feeling starts here.

COOPER

Available on all MINI models, the Cooper has a 1.5l 3-cylinder petrol engine (136 hp/100 kW) which offers a handy blend of power and fuel economy.

COOPER S

Available on all MINI models, the Cooper S packs the biggest punch. Under the bonnet it boasts a 2.0l MINI TwinPower Turbo 4-cylinder petrol engine that delivers all the power you need, generating 178 hp/131 kW.* MINI Driving Modes, allowing adaption to different driving situations and ensuring a high driving efficiency, are standard on Cooper S variants. The MINI Countryman Plug-in Hybrid features a clever combination: a 3-cylinder petrol engine (125 hp/92 kW*) at the front with a 95 hp/70 kW e-motor at the rear axle.

*All MINI models are now RDE2 Compliant as part of the Euro 6d legislation. To meet these emissions targets, the rated engine power of the Cooper S, Cooper S ALL4 and Cooper SE ALL4 (Plug-in Hybrid) variants has had to be decreased slightly. Please be aware that despite this measured power reduction, a boost function has now been built into the engine mapping, meaning that a temporary increase in power is available for short periods of time. Therefore the drivability remains very similar to previously built vehicles, and acceleration times are unchanged.



3. SELECT YOUR STYLE.

CLASSIC.



SPORT.



EXCLUSIVE.



CLASSIC.



The Classic style comes with an extensive list of standard specifications, such as:

EXTERIOR:

- Moonwalk Grey exterior paint
- Roof¹ and mirror caps in body colour
- 15" steel wheels on One variants
- 15" or 16" alloy wheels on Cooper variants²
- 16" or 17" alloy wheels on Cooper S variants²

INTERIOR:

- Standard seats in cloth on One and Cooper variants and on MINI Countryman Plug-in Hybrid
- Sport seats in cloth on Cooper S variants
- Sport leather steering wheel
- Satellite Grey headlining¹
- Hazy Grey interior trim on MINI Clubman Cooper and MINI Countryman Cooper / ALL4
- Piano Black interior trim on all other models and variants

¹Not available on Convertible models. ²Availability of alloy wheels depends on the model selected, for more information please see the 'Style Options' pages of the models you are interested in. Model featured: The MINI 3-door Hatch One Classic. The interior image shown features optional seats, interior trim and Comfort Pack.

SPORT.



The Sport style is distinctly sporty. It includes some exciting John Cooper Works interior and exterior features and upgraded equipment, such as:

EXTERIOR:

- Chili Red exterior paint colour
- Black roof¹ and mirror caps
- Upgraded John Cooper Works alloy wheels:
 - 17" or 18" alloy wheels² available as standard
 - 18" or 19" alloy wheels² optionally available
- Piano Black Exterior
- John Cooper Works aerodynamic kit including roof spoiler¹
- Exterior John Cooper Works badging (Hatch and Convertible models only)

INTERIOR:

- John Cooper Works sport seats with Dinamica / cloth upholstery in Carbon Black
- Walknappa steering wheel with John Cooper Works badge

- John Cooper Works Piano Black (Countryman models) or Piano Black (other models) interior trim
- John Cooper Works door sill finishers
- Anthracite headlining¹
- Stainless steel pedals (Clubman and Countryman models only)

TECHNOLOGY:

- MINI Driving Modes³
- Sport Suspension (Clubman and Countryman models) or Intelligent Adaptive Suspension (Hatch and Convertible models)
- Rear Park Distance Control⁴

EXCLUSIVE.



The Exclusive style prizes individuality and a more refined style. It includes some exclusive MINI Yours interior and exterior features as well as upgraded equipment, such as:

EXTERIOR:

- Enigmatic Black exterior paint
- Silver roof¹ and mirror caps
- Exclusive alloy wheels:
 - 18" or 19" MINI Yours British Spoke alloy wheels in two-tone² available as standard
 - 17", 18" or 19" alloy wheels² optionally available
- Exterior MINI Yours badging¹

INTERIOR:

- MINI Yours Lounge leather sport seats in Carbon Black
- Walknappa steering wheel with MINI Yours badge
- MINI Yours interior style
- MINI Yours badging on floor mats
- Anthracite headlining¹

TECHNOLOGY:

- MINI Driving Modes³
- Rear Park Distance Control⁴

The Sport style is not available on One variants. ¹Not available on Convertible models. ²Availability of alloy wheels depends on the model selected, for more information please see the 'Style Options' pages of the models you are interested in. ³Already standard on Cooper S variants. ⁴Already standard on all Convertible, Clubman and Countryman models. Model shown: The MINI 3-door Hatch Cooper S Sport. The interior image shown features optional Dinamica / leather upholstery, Comfort Plus Pack and Navigation Plus Pack.

The Exclusive style is not available on One variants. ¹Not available on Convertible models. ²Availability of alloy wheels depends on the model selected, for more information please see the 'Style Options' pages of the models you are interested in. ³Already standard on Cooper S variants. ⁴Already standard on all Convertible, Clubman and Countryman models. Model featured: The MINI 3-door Hatch Cooper S Exclusive. The interior image shown features optional Silver Chequered interior trim, Comfort Plus Pack, Navigation Plus Pack, Driving Assistant Pack and Steptronic transmission with double clutch.

4. ADD SOME PACKS.



DRIVING ASSISTANT PACK



COMFORT PACKAGES



NAVIGATION PACKAGES

DRIVING ASSISTANT PACK.

The optional Driving Assistant Pack includes Driving Assistant and Active Cruise Control, which are camera-based driver assistance systems that increase safety on the road for you and others around you.

The following features are included:

- Lane departure warning with steering wheel vibration
- Speed limit and traffic sign information
- City collision mitigation for pedestrians and rear end collision with vehicles, via audio warning followed by automatic braking (alert timing can be adjusted)
- Brake conditioning to reduce braking distances prior to collision (if collision cannot be avoided, this reduces the impact)
- Camera-guided automatic cruise control to regulate the distance to vehicle in front – including 'Stop and go' functionality allowing the system to operate down to zero miles per hour
- High-beam assistant: at speeds above 30 mph, the high-beam headlights are turned on and off automatically depending on approaching traffic; also detects sufficient exterior lighting, for example in built-up areas
- Electronic Parking Brake



Temporary restrictions may affect the availability of this option, please check with your MINI Retailer for further information.

COMFORT PACK.

The Comfort Pack adds more comfort to your MINI with the following features:

- Automatic air conditioning
- Seat heating
- Storage compartment pack
- Front centre armrest
- Comfort Access System (keyless vehicle access)

Additional content for the MINI Hatch Classic models*:

- Rear Park Distance Control

*Already standard with all other models.



Seat heating for driver and front passenger and automatic air conditioning

COMFORT PLUS PACK.

Add even more comfort to your MINI with the Comfort Plus Pack. It comprises all the equipment of the Comfort Pack:

- Automatic air conditioning
- Seat heating
- Storage compartment pack
- Front centre armrest
- Comfort Access System (keyless vehicle access)

Additional content for the MINI Hatch Classic models*:

- Rear Park Distance Control

It also includes the following features:

- Rear view camera
- Folding and auto-dimming mirrors with dipping parking function; including MINI logo projection
- Parking Assistant including Front Park Distance Control (helping you find a suitable parking space and making parallel parking easy, you just have to brake and accelerate as required)

*Already standard with all other models.



Folding and auto-dimming exterior mirrors



Parking Assistant including front and rear Park Distance Control



Comfort Access System



Front centre armrest



MINI logo projection



Rear view camera

NAVIGATION PACK.

The Navigation Pack is standard on MINI Clubman, MINI Countryman and the MINI Electric. It's also optionally available on the MINI Hatch and the MINI Convertible.

It includes the following features:

- Navigation System with 8.8" centre display screen
- Real Time Traffic Information (RTTI)



Navigation System with 8.8" centre display screen



Real Time Traffic Information (RTTI)

NAVIGATION PLUS PACK.

To be even more connected to the world, upgrade your MINI with the optional Navigation Plus Pack, available with all MINI models. It's packed with intuitive multimedia and connectivity features such as Head-up Display, Digital Dash, Concierge Service and more.

It comprises all the equipment of the Navigation Pack:

- Navigation System with 8.8" centre display screen
- Real Time Traffic Information (RTTI)

It also includes the following features:

- Digital cockpit display (5" digital dashboard display behind the steering wheel, showing revolution counter on the left, fuel gauge on the right, and speed and general information in the centre)
- Head-up Display
- Concierge Service
- MINI Connected XL* with additional features including Journey Mate functionality which helps to plan your trip and set reminders to show in your car, 'last mile navigation' which helps you find your destination once parked, 'car finder' which helps you return to your car
- Enhanced Bluetooth with wireless charging

*Subject to phone compatibility, please check mini.co.uk/connected



Enhanced Bluetooth with wireless charging



Digital cockpit display

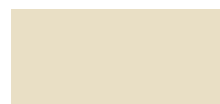


Head-up Display

5. PERSONALISE.

EXTERIOR COLOURS.

All models¹:



Pepper White^{1,2}



White Silver^{*,3}



Rooftop Grey^{*,4}



Moonwalk Grey^{*}
(standard with the Classic style)



Island Blue^{*}



Midnight Black^{*,5}



British Racing Green IV^{*}



Chili Red[^]
(standard with the Sport style)



MINI Yours Enigmatic Black^{*}
(standard with the Exclusive style)

Additional colour for the MINI Convertible models:



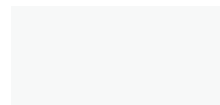
Zesty Yellow^{*,4,^}

Additional colour for MINI Countryman models:

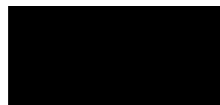


Sage Green^{*}
(special paint)

Contrast roof and mirror caps colours:



Aspen White²



Jet Black⁵
(standard with the Sport style)



Melting Silver^{*,4,7}
(standard with the Exclusive style)



Chili Red^{8,^}

Additional colour for MINI Clubman models:



Indian Summer Red^{*,6}

Additional colour for MINI John Cooper Works models:



Rebel Green
(standard on John Cooper Works models)

SINGLE OPTIONS.



Adaptive LED headlights with Matrix function⁹



Panoramic glass sunroof¹⁰



Darkened rear glass¹⁰



Automatic gearbox
(7-speed Steptronic transmission with double clutch or 8-speed Automatic transmission)¹¹

¹Excludes MINI Electric models. For more information about the exterior paint colours available on MINI Electric models, please [click here](#). ²Metallik. ³Not available on Countryman models. ⁴Pepper White is not available with roof and mirror caps in white. ⁵White Silver is not available with roof in body colour. ⁶Rooftop Grey and Zesty Yellow are not available with roof and mirror caps in silver or bonnet stripes in silver. ⁷Midnight Black is not available with roof and mirror caps in black. ⁸Indian Summer Red is not available with the John Cooper Works 306hp model. ⁹Roof and mirror caps in silver are only available with the Exclusive style. ¹⁰Roof and mirror caps in red are only available on John Cooper Works models. ¹¹Chili Red and Zesty Yellow are not available with roof and mirror caps in red or John Cooper Works bonnet stripes.

For more information about the single options available, please refer to the individual models price lists or speak to your MINI Retailer. ⁹Image shows the MINI Hatch. ¹⁰Images show the MINI Countryman. ¹¹Availability of transmission depends on the model selected, for more information please refer to the individual models price lists or speak to your MINI Retailer.

THE MINI 3-DOOR AND 5-DOOR HATCH. BECAUSE WE LOVE CORNERS.

The MINI Hatch is our original icon, because it's where it all began. It's the car that helped us discover our love of corners and still inspires our passion for go-kart handling. From the 1964 Monte Carlo Rally to now. And the story continues with the latest MINI Hatch range. Cars that can spark a smile before you even set off. Designed to make life a whole lot brighter. Built to stand out. Break routine. And shake off those shackles. Wherever 2022 takes you, let the MINI Hatch help you find the way.

STANDARD EQUIPMENT HIGHLIGHTS.

EXTERIOR:

- LED headlights
- LED rear lights with Union Jack design

INTERIOR:

- Ambient Lighting
- Passenger seat height adjustment
- Floor mats
- Multi-function controls for steering wheel

INFOTAINMENT:

- DAB digital radio
- Media Pack, including:
 - 8.8" centre display screen
 - Apple CarPlay
 - Bluetooth hands free function with USB audio
 - ConnectedDrive Services (including Online Search and Weather Information)
 - Intelligent emergency calling (E-call)
- MINI Connected
- Remote Services

TECHNOLOGY:

- Cruise control with brake function
- Rain sensor and automatic headlight activation



LED headlights (optional Piano Black Exterior also shown around headlight)



8.8" centre display screen with MINI Connected



Multi-function controls for steering wheel



LED rear lights with Union Jack design



Floor mats in velour



Intelligent emergency calling (E-call)

BECAUSE WE LOVE GO-KART HANDLING.

The MINI 3-door Hatch embodies our love for fun-filled, joyful driving. It captures our inimitable spirit, as well as our passion for agile handling (and corners, of course). It keeps that well-loved go-kart handling and low centre of gravity, plus more innovations, more game-changing tech and a sleeker design.



BECAUSE WE LOVE 5 X THE FUN.

The MINI 5-door Hatch puts a spacious spin on our original icon. Because we love to fit more in. To stretch out. And bring the whole gang along for the adventure. It has all the hallmarks of the original Hatch, now with refinements to design, upgrades to tech and innovations to take your journeys to a whole new level – plus extra doors and space in the back.



STYLE OPTIONS.

THE MINI 3-DOOR AND 5-DOOR HATCH.



CLASSIC.



ALLOY WHEELS.

STANDARD.



ONE
15" steel wheels in silver

COOPER
15" Heli Spoke alloy wheels in silver

COOPER S
16" Revolite Spoke alloy wheels in Dark Grey

OPTIONAL.



17" Scissor Spoke alloy wheels in two-tone

17" Pedal Spoke alloy wheels in black

16" Victory Spoke alloy wheels in black¹

16" Revolite Spoke alloy wheels in Dark Grey¹

15" Heli Spoke alloy wheels in silver²

SEATS AND UPHOLSTERIES.

STANDARD.



ONE / COOPER
Standard seats with Firework cloth upholstery in Carbon Black³

COOPER S
Sport seats with Double Stripe cloth upholstery in Carbon Black³

OPTIONAL.



Sport seats with Light Chequered cloth upholstery³

Sport seats with Carbon Black cloth upholstery³

Sport seats with Leatherette upholstery in Carbon Black³

INTERIOR TRIMS.

STANDARD.



Piano Black interior trim

SPORT.



ALLOY WHEELS.

STANDARD.



17" John Cooper Works Track Spoke alloy wheels in black

OPTIONAL.



18" John Cooper Works Course Spoke alloy wheels in two-tone

SEATS AND UPHOLSTERIES.

STANDARD.



John Cooper Works sport seats with Dinamica / cloth upholstery in Carbon Black³

OPTIONAL.



John Cooper Works sport seats with Dinamica / leather upholstery in Carbon Black⁴

Sport seats with Cross Punch leather* upholstery in Carbon Black⁴

INTERIOR TRIMS.

STANDARD.



Piano Black interior trim

EXCLUSIVE.



ALLOY WHEELS.

STANDARD.



18" MINI Yours British Spoke alloy wheels in two-tone

OPTIONAL.



17" Roulette Spoke alloy wheels in two-tone

17" Tentacle Spoke alloy wheels in silver

17" Tentacle Spoke alloy wheels in black

17" Rail Spoke alloy wheels in two-tone

18" Pulse Spoke alloy wheels in two-tone

SEATS AND UPHOLSTERIES.

STANDARD.



Sport seats with MINI Yours Lounge leather upholstery in Carbon Black⁴

OPTIONAL.

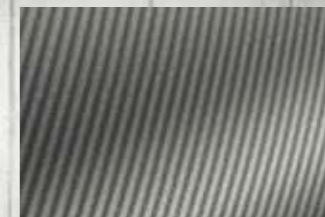


Sport seats with Chester leather* upholstery in Satellite Grey²

Sport seats with Chester leather* upholstery in Malt Brown⁴

INTERIOR TRIMS.

STANDARD.



Aluminium interior trim

OPTIONAL.



Silver Chequered interior trim

¹Optionally available on One and Cooper variants only. ²Optionally available on One variants only.

³Seats don't include lumbar support.

⁴Seats include lumbar support.

* Some sections of the seat and interior feature synthetic leather.

THE MINI ELECTRIC.

BECAUSE WE LOVE TO FEEL ELECTRIC.



Model featured: The MINI Electric Level 3 personalised with White Silver metallic exterior paint, Energetic Yellow mirror caps with roof in black and 17" Electric Power Spoke alloy wheels in two-tone.

If you're looking for a car that's all torque, as well as action, then let us introduce the latest MINI Electric. It feels better than ever, with immediate oomph thanks to instant torque. And it looks better than ever too. With a sharper, sleeker update to its legendary MINI look and, of course, that MINI Electric feeling. The MINI Electric is the best of both worlds, giving you the iconic character of MINI with all the benefits of going electric. Emitting zero emissions, it's the perfect combination of sustainable driving, thrilling driving performance and iconic MINI design. The MINI Electric is reinventing urban life.

STANDARD EQUIPMENT HIGHLIGHTS.

EXTERIOR:

- LED headlights
- LED rear lights with Union Jack design
- MINI e-badge

INTERIOR:

- Ambient Lighting
- Automatic dual zone air conditioning
- Design highlights in Energetic Yellow
- Digital cockpit display (5" digital dashboard display behind the steering wheel, showing revolution counter on the left, fuel gauge on the right, and speed and general information in the centre)
- Multi-function controls for steering wheel
- Passenger seat height adjustment

TECHNOLOGY:

- Acoustic pedestrian protection (external driving noise generated when driving at speeds less than 19 mph in pure electric mode to aid pedestrian safety)
- Automatic transmission
- Cruise control with brake function
- Electric parking brake
- Heat pump (allows excess heat from motor to be utilised for heating cabin space when required, rather than utilising battery power to maximise efficiency)
- MINI Driving Modes (centre toggle switch to control driving mode settings: Sport, Mid, Green, Green+; allows adaption to different driving situations and ensures a high driving efficiency and the optimal electric range)
- Pre-conditioning (remotely heat or cool the vehicle prior to departure through the MINI App)
- Rain sensor and automatic headlight activation
- Two levels of power regeneration (energy recovery toggle which allows the driver to alter the severity of automatic braking when releasing the throttle by changing the amount of energy being regenerated when coasting)

INFOTAINMENT:

- Media Pack, including:
 - 8.8" centre display screen
 - Bluetooth hands free function with USB audio
 - ConnectedDrive Services (including Online Search and Weather Information)
 - Intelligent emergency calling (E-call)
 - MINI Connected
 - Remote Services
- DAB digital radio

CHARGING:

- AC and DC charging
- AC home (occasional 3-pin plug) Flexible charging cable (type 2 - 2.3 kW). Flexible charging cable can charge up to 11 kW with optional interchangeable adapter, and a suitable power source.
- AC public charging cable (type 2 - 11 kW)
- MINI Charging (access to more than 15,000 public charging points in the UK across a range of providers, using just one RFID card or via a mobile app)*

TECHNICAL DATA.

PERFORMANCE:

- Max. output: 184 hp
- Max. torque: 270 Nm
- 0-37 mph: 3.9 seconds
- 0-62 mph: 7.3 seconds
- Top speed: 93 mph

BATTERY:

- Battery type: Lithium-Ion
- Gross battery content (high voltage): 32.6 kWh
- Net battery content (high voltage): 28.9 kWh
- Battery capacity (high voltage): 93.2 Ah

RANGE AND CONSUMPTION[†]:

- Electric Range: 140 - 145 miles[‡]
- Electric energy consumption (combined): 3.9 - 4.1 miles/kWh (15.8 - 15.2 kWh/100 km)
- CO₂ emissions: 0 g/km

[†]For more information about MINI Charging please visit [MINI-Charging.com](https://www.mini.co.uk/charging) [‡]These figures were obtained after the battery had been fully charged. The MINI Electric is a battery electric vehicle requiring mains electricity for charging. There is a new test for fuel consumption, CO₂ and electric range figures. The electric range shown was achieved using the new test procedure. Figures shown are for comparability purposes. Only compare fuel consumption, CO₂ and electric range figures with other cars tested to the same technical procedures. The CO₂ figures shown have been determined according to the WLTP test. WLTP has been used as the applicable CO₂ figure from 1 April 2020 for first year vehicle tax (VED) and from 6 April 2020 for company car tax (BIK). The CO₂ figures were previously based on the NEDC equivalent. [§]These figures may not reflect real life driving results, which will depend upon a number of factors including the starting charge of the battery, accessories fitted (post-registration), variations in weather, driving styles and vehicle load.

LEVEL OPTIONS. THE MINI ELECTRIC.



LEVEL 1.

Keep things simple and iconic.



STANDARD EQUIPMENT.



Sport seats with Double Stripe cloth upholstery in Carbon Black¹



Piano Black interior trim



Satellite Grey headlining

- Floor mats
- Front and rear ISOFIX child seat attachment
- Interior lights pack
- Navigation Pack (including Navigation System and Real Time Traffic Information (RTTI))
- Sport leather steering wheel

PERSONALISATION.[^]

ALLOY WHEELS.



16" Electric Revolite Spoke in Dark Grey (standard)



16" Victory Spoke in black



17" Electric Power Spoke in two-tone

EXTERIOR PAINT COLOURS.



Moonwalk Grey[†] (standard)



White Silver^{‡,3}

ROOF AND MIRROR CAPS.⁶



Aspen White



Jet Black

MIRROR CAPS.⁶



Energetic Yellow

LEVEL 2.

Extra technology, increased comfort.



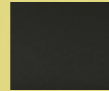
STANDARD EQUIPMENT.



Sport seats with Black Pearl cloth/leatherette upholstery¹



Piano Black interior trim



Anthracite headlining

- All the standard features from the Level 1
- Comfort Access System
- Driving Assistant
- Folding and auto-dimming mirrors
- Front centre armrest
- MINI logo projection
- Rear Park Distance Control
- Rear view camera
- Seat heating, front
- Storage compartment pack

PERSONALISATION.[^]

ALLOY WHEELS.



16" Victory Spoke in black



17" Electric Power Spoke in two-tone



17" Tentacle Spoke in silver



17" Tentacle Spoke in black (standard)



17" Rail Spoke in two-tone

EXTERIOR PAINT COLOURS.



Moonwalk Grey[†]



White Silver^{‡,3}



Midnight Black^{‡,4}



Chili Red[§]



British Racing Green^{‡,5} (standard)

ROOF AND MIRROR CAPS.⁶



Aspen White



Jet Black⁴

MIRROR CAPS.⁶



Energetic Yellow⁵

LEVEL 3.

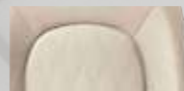
High specification, more customisation.



STANDARD EQUIPMENT.



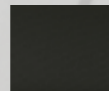
Sport seats with MINI Yours Lounge leather upholstery in Carbon Black² (standard)



Sport seats with Chester leather upholstery in Satellite Grey²



Piano Black interior trim



Anthracite headlining

- All the standard features from the Level 1 and Level 2
- Adaptive LED headlights with Matrix function
- Front Park Distance Control
- Harman Kardon Hi-Fi System
- Head-up Display
- Navigation Plus Pack (with Concierge Service, Connected XL and Bluetooth with wireless charging)
- Panoramic glass sunroof
- Parking Assistant
- Walknappa steering wheel

PERSONALISATION.[^]

ALLOY WHEELS.



16" Victory Spoke in black



17" Electric Power Spoke in two-tone



17" Tentacle Spoke in silver



17" Tentacle Spoke in black



17" Rail Spoke in two-tone



17" Roulette Spoke in two-tone (standard)

EXTERIOR PAINT COLOURS.



Moonwalk Grey[†]



White Silver^{‡,3}



Midnight Black^{‡,4}



Chili Red[§]



British Racing Green^{‡,5}



MINI Yours Enigmatic Black[‡] (standard)

ROOF AND MIRROR CAPS.⁶



Aspen White



Jet Black⁴

MIRROR CAPS.⁶



Energetic Yellow⁵

[^] Personalisation options are available at no additional cost. [†] Metallic exterior paint colour. ¹ Seats don't include lumbar support. ² Seats include lumbar support. ³ White Silver exterior paint colour is not available with roof and mirror caps in body colour. ⁴ Midnight Black exterior paint colour is not available with roof and mirror caps in Jet Black. ⁵ Chili Red and British Racing Green exterior paint colours are not available with Energetic Yellow mirror caps. ⁶ Roof and mirror caps come in body colour³ as standard, the colour is overridden if roof and mirror caps in white or black are selected, and if mirror caps in Energetic Yellow are selected this will supersede the white or black caps.

THE MINI ELECTRIC COLLECTION.

The MINI Electric welcomes a unique edition: the MINI Electric Collection. Created as the 'Designers Choice' from MINI, the Collection is a truly unique MINI Electric. Coming with a fixed standard specification apart from an exterior colour personalisation option and optional upholsteries, the MINI Electric Collection is based on the Level 3 and includes some unique features such as the 17" Electric Collection Spoke alloy wheels and Collection exterior graphics. It's also the only MINI Electric which includes special exterior paint colours, perfectly partnered with the exciting multi-tone roof and Piano Black Exterior. The interior design complements the exterior of the car, thanks to sport seats upholstered with cloth/leatherette in Light Grey and Aluminium interior trim.

STANDARD EQUIPMENT HIGHLIGHTS.

IN ADDITION TO THE MINI ELECTRIC LEVEL 3 STANDARD EQUIPMENT.*

EXTERIOR:

- Island Blue metallic exterior paint colour
- Multi-tone roof
- Black mirror caps
- 17" Electric Collection Spoke alloy wheels
- Piano Black Exterior
- Collection exterior graphics (bonnet and doors)

INTERIOR:

- Cloth/leatherette upholstery in Light Grey
- Anthracite headlining
- Aluminium interior trim
- Walknappa steering wheel
- Collection door sill finishers

*Excludes Panoramic glass sunroof, available as a cost option.



Multi-tone roof



17" Electric Collection Spoke alloy wheels



Cloth/leatherette upholstery in Light Grey

Model featured: The MINI Electric Collection in Island Blue exterior paint.

PERSONALISATION.

NO ADDITIONAL COST.

- Rooftop Grey metallic exterior paint colour

OPTIONAL UPHOLSTERIES.



MINI Yours Lounge leather upholstery in Carbon Black



Chester leather upholstery in Satellite Grey

CONVENIENT CHARGING SOLUTIONS. THE MINI ELECTRIC.



EASY HOME CHARGING OR CHARGING ON THE GO.

The MINI Electric includes AC for easy home and public charging and DC for rapid public charging.



CHARGING CABLES.

The MINI Electric comes with both an AC home (occasional 3-pin plug) Flexible charging cable (type 2 - 2.3 kW) and an AC public charging cable (type 2 - 11 kW) as standard.



PUBLIC CHARGING.

You can use both AC public charging and DC rapid chargers (with their own cables ready to use). Just activate your MINI Charging account to access more than 15,000 public charging points in the UK.



HOME CHARGING.

You can charge your car at home using the AC home (occasional 3-pin plug) Flexible charging cable (type 2 - 2.3 kW) or your Homecharge unit.¹



CHARGING TIME.²

Home charging (AC)		
With AC home (occasional 3-pin plug) Flexible charging cable (type 2 - 2.3 kW)	2.3 kW	12 hours
With Homecharge unit ¹	7.4 kW	3 hours 12 minutes ³
Public charging (AC/DC)		
With AC public charging	11 kW	2 hours 30 minutes ⁴
With DC rapid charger	50 kW	36 minutes ⁵

MINI CHARGING.

MINI Charging is your gateway to one of the world's largest public charging networks. You will have access* to more than 15,000 public charging points in the UK across a range of providers, using just one RFID card or via a mobile app. What's more, your MINI Charging account is also valid across Europe.

You can monitor your charging history directly from your account, and you can find MINI Charging locations via the MINI Charging App or on [MINI-Charging.com](https://www.mini-charging.com)

MINI Charging also comprises a one-year free upgrade to include a bp pulse subscription package, offering discounted and preferential charging rates at bp pulse points (normally worth £7.85 per month).

PARTNERSHIP WITH BP PULSE.

For home charging you can use the bp pulse Homecharge unit.

For more information please visit mini-electric.bpchargemaster.com



*For more information about MINI Charging please visit [MINI-Charging.com](https://www.mini-charging.com) ⁶Source: Zap-Map. ¹The Homecharge unit is not included in the price of the car, it has to be purchased separately. For more information please speak to your MINI Retailer. ²Charging time corresponds to an 80% charge. Charging times are approximate and may vary depending on various factors such as the type and condition of the charger and the temperature of the battery at the point of use. ³Charging time applies to any 7.4 kW Homecharge unit. ⁴A 100% charge is achieved in 3 hours 30 minutes. ⁵A 100% charge is achieved in 1 hour 24 minutes.

THE MINI CONVERTIBLE. BECAUSE WE LOVE WINDSWEPT HAIR.



Get ready to love every moment you spend behind the wheel of the MINI Convertible. It promises open-air, open ended adventure come rain or shine. Delivering legendary go-kart handling plus an added dose of spontaneity with the ability to drop the top in seconds.

The steep front windscreen offers a clear view of the sky above. When the roof is closed, the multiple layers in the soft-top provide a high level of sound insulation.

STANDARD EQUIPMENT HIGHLIGHTS.

EXTERIOR:

- LED headlights
- LED rear lights with Union Jack design
- Soft-top with integrated sunroof function and fully electric soft-top operation

INTERIOR:

- Ambient Lighting
- Floor mats
- Multi-function controls for steering wheel
- Passenger seat height adjustment

TECHNOLOGY:

- Cruise control with brake function
- MINI Convertible Pack, including:
 - Comfort Access System
 - Wind deflector
 - Always Open Timer
- Rain sensor and automatic headlight activation
- Rear Park Distance Control

INFOTAINMENT:

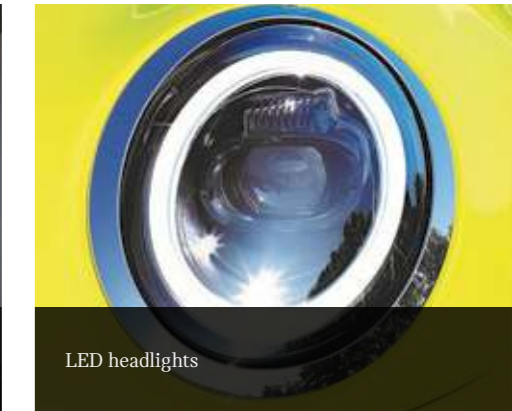
- DAB digital radio
- Media Pack, including:
 - 8.8" centre display screen
 - Apple CarPlay
 - Bluetooth hands free function with USB audio
- ConnectedDrive Services (including Online Search and Weather Information)
- Intelligent emergency calling (E-call)
- MINI Connected
- Remote Services



Fully electric soft-top with integrated sunroof function and wind deflector from the MINI Convertible Pack



Rear Park Distance Control



LED headlights



Multi-function controls for steering wheel



8.8" centre display screen with MINI Connected



LED rear lights with Union Jack design



STYLE OPTIONS. THE MINI CONVERTIBLE.



CLASSIC.



ALLOY WHEELS.

STANDARD.



COOPER
15" Heli Spoke alloy wheels in silver

COOPER S
16" Revolite Spoke alloy wheels in Dark Grey

OPTIONAL.



17" Pedal Spoke alloy wheels in black

16" Victory Spoke alloy wheels in black¹

16" Revolite Spoke alloy wheels in Dark Grey¹

SEATS AND UPHOLSTERIES.

STANDARD.



COOPER
Standard seats with Firework cloth upholstery in Carbon Black²

COOPER S
Sport seats with Double Stripe cloth upholstery in Carbon Black²

OPTIONAL.



Sport seats with Light Chequered cloth upholstery²

Sport seats with Carbon Black cloth upholstery²

Sport seats with Leatherette upholstery in Carbon Black²

INTERIOR TRIMS.

STANDARD.



Piano Black interior trim

SPORT.



ALLOY WHEELS.

STANDARD.



17" John Cooper Works Track Spoke alloy wheels in black

OPTIONAL.



18" John Cooper Works Course Spoke alloy wheels in two-tone

SEATS AND UPHOLSTERIES.

STANDARD.



John Cooper Works sport seats with Dinamica / cloth upholstery in Carbon Black²

OPTIONAL.



John Cooper Works sport seats with Dinamica / leather upholstery in Carbon Black²

Sport seats with Cross Punch leather* upholstery in Carbon Black³

INTERIOR TRIMS.

STANDARD.



Piano Black interior trim

EXCLUSIVE.



ALLOY WHEELS.

STANDARD.



18" MINI Yours British Spoke alloy wheels in two-tone

OPTIONAL.



17" Roulette Spoke alloy wheels in two-tone

17" Tentacle Spoke alloy wheels in silver

17" Tentacle Spoke alloy wheels in black

17" Rail Spoke alloy wheels in two-tone

18" Pulse Spoke alloy wheels in two-tone

SEATS AND UPHOLSTERIES.

STANDARD.



Sport seats with MINI Yours Lounge leather upholstery in Carbon Black³

OPTIONAL.

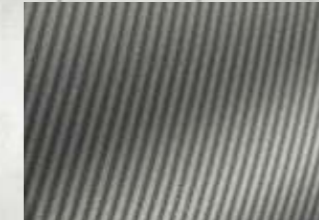


Sport seats with Chester leather* upholstery in Satellite Grey²

Sport seats with Chester leather* upholstery in Malt Brown³

INTERIOR TRIMS.

STANDARD.



Aluminium interior trim

OPTIONAL.



Silver Chequered interior trim

¹ Only available on Cooper variants.

² Seats don't include lumbar support.

³ Seats include lumbar support.

* Some sections of the seat and interior feature synthetic leather.

THE NEW MINI HATCH, CONVERTIBLE AND ELECTRIC SHADOW EDITION. MINIS WITH BIG ATTITUDE.



The Shadow Edition's sleek look and bold attitude push the playful MINI spirit to new levels. This sporty and masculine inspired special edition is offered on the MINI 3-door Hatch, 5-door Hatch and Convertible models with either a Cooper petrol engine or a powerful Cooper S petrol engine, or as a MINI Electric. Based on the Sport style for Hatch and Convertible models and on the Level 3 for MINI Electric, the Shadow Edition is given a definitively grown-up look thanks to the Midnight Black metallic exterior paint colour and Piano Black Exterior. It focuses on blacked out features (with contrasting silver roof[^] and mirror caps on Hatch^{**} and Convertible models). The bespoke Shadow Edition logo, embellished with a unique design, can be spotted on the side scuttles, bonnet, roof, dashboard interior trim and door sill finishers too. These specific Shadow decals offer changing tones and textures depending on the light conditions. You can also personalise your limited edition thanks to various options[†] and the choice between manual[^] and automatic transmission. So what are you waiting for?



The Shadow Edition is also available with the MINI Clubman and Countryman models, for more information please [click here](#).

STANDARD EQUIPMENT HIGHLIGHTS.

IN ADDITION / REPLACEMENT TO THE MINI HATCH OR CONVERTIBLE COOPER OR COOPER S SPORT STANDARD EQUIPMENT[†] OR TO THE MINI ELECTRIC LEVEL 3 STANDARD EQUIPMENT.^{†,††}

EXTERIOR:

- 17" Tentacle Spoke alloy wheels in black on MINI Electric
- 18" John Cooper Works Course Spoke alloy wheels in two-tone on MINI Hatch^{**} and Convertible models
- Midnight Black metallic exterior paint colour
- Piano Black Exterior

- Roof and mirror caps in body colour on MINI Electric
- Roof[^] and mirror caps in silver on MINI Hatch^{**} and Convertible models
- Shadow Edition decal on bonnet
- Shadow Edition design on A-panel with integrated side scuttle trim
- Shadow Edition exterior logo on roof (not for Convertible)

INTERIOR:

- Anthracite headlining (not for Convertible)
- Door sill finishers with Shadow Edition design and logo
- Piano Black interior trim with Shadow Edition logo



Shadow Edition design on A-panel with integrated side scuttle trim



Door sill finishers with Shadow Edition design and logo



Piano Black interior trim with Shadow Edition logo

The Shadow Edition standard equipment comprises fixed specification including unique Shadow Edition features, the Sport or Level 3 standard equipment features as well as a few locked options such as the exterior paint colour, alloy wheels, interior trim and Piano Black Exterior.

Models featured: The new MINI 5-door Hatch Shadow Edition Cooper S, MINI Electric Shadow Edition and MINI Convertible Shadow Edition Cooper S.

^{*} Not on Convertible models. ^{**} Excluding MINI Electric. [^] Automatic transmission in standard on MINI Electric. [†] For more information about the MINI Hatch and Convertible Cooper and Cooper S Sport models standard and optional equipment and the MINI Electric Level 3 standard and optional equipment, please refer to the relevant MINI models price lists. ^{††} Excludes Panoramic glass sunroof, available as a cost option.

THE MINI CLUBMAN. OPEN MORE DOORS.



The MINI Clubman is the most charming and sophisticated MINI we've ever made. It's a step up in size – and in functionality. We've designed a roomy interior crafted from top-quality materials and packed full of the latest innovations. And with its six doors – including split rear doors – and seating for five, it's the perfect saloon for long and short trips.



STANDARD EQUIPMENT HIGHLIGHTS.

EXTERIOR:

- LED fog lights
- LED headlights
- LED rear lights with Union Jack design

INTERIOR:

- Ambient Lighting
- Floor mats
- Interior lights pack
- Multi-function controls for steering wheel
- Passenger seat height adjustment

INFOTAINMENT:

- DAB digital radio
- Media Pack, including:
 - 8.8" centre display screen
 - Apple CarPlay
 - Bluetooth hands free function with USB
 - ConnectedDrive Services (including Online Search and Weather Information)
 - Intelligent emergency calling (E-call)
 - MINI Connected
 - Remote Services

– Navigation Pack, including:

- Navigation System
- Real Time Traffic Information (RTTI)

TECHNOLOGY:

- Cruise control with brake function
- Rain sensor and automatic headlight activation
- Rear Park Distance Control



Navigation system with 8.8" centre display screen, included in the Navigation Pack



Rear Park Distance Control



LED headlights



Real Time Traffic Information (RTTI), included in the Navigation Pack



LED rear lights with Union Jack design



Multi-function controls for steering wheel



STYLE OPTIONS. THE MINI CLUBMAN.



CLASSIC.



ALLOY WHEELS.

STANDARD.



COOPER
16" Revolute Spoke alloy wheels in silver

COOPER S
17" Vent Spoke alloy wheels in silver

OPTIONAL.



17" Net Spoke alloy wheels in black

17" Vent Spoke alloy wheels in silver

SEATS AND UPHOLSTERIES.

STANDARD.



COOPER
Standard seats with Firework cloth upholstery in Carbon Black¹



COOPER S
Sport seats with Double Stripe cloth upholstery in Carbon Black¹

OPTIONAL.



Sport seats with Leatherette upholstery in Carbon Black¹

INTERIOR TRIMS.

STANDARD.



COOPER
Hazy Grey interior trim



COOPER S
Piano Black interior trim

OPTIONAL.



Piano Black interior trim

SPORT.



ALLOY WHEELS.

STANDARD.



18" John Cooper Works Grip Spoke alloy wheels in silver

OPTIONAL.



19" John Cooper Works Circuit Spoke alloy wheels in two-tone (only with Sport Suspension)

SEATS AND UPHOLSTERIES.

STANDARD.



John Cooper Works sport seats with Dinamica / cloth upholstery in Carbon Black¹

OPTIONAL.



John Cooper Works sport seats with Dinamica / leather upholstery in Carbon Black²



Sport seats with Cross Punch leather* upholstery in Carbon Black²

INTERIOR TRIMS.

STANDARD.



Piano Black interior trim

EXCLUSIVE.



ALLOY WHEELS.

STANDARD.



18" MINI Yours British Spoke alloy wheels in two-tone

OPTIONAL.



18" Star Spoke alloy wheels in silver



18" Star Spoke alloy wheels in black



18" Multiray Spoke alloy wheels

SEATS AND UPHOLSTERIES.

STANDARD.



Sport seats with MINI Yours Lounge leather upholstery in Carbon Black²

OPTIONAL.



Sport seats with Chester leather* upholstery in Satellite Grey²



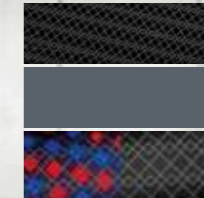
Sport seats with Chester leather* upholstery in Indigo Blue²



Sport seats with Chester leather* upholstery in Malt Brown²

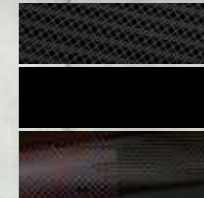
INTERIOR STYLES.

STANDARD.

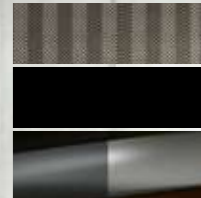


MINI Yours Frozen Blue interior style, illuminated

OPTIONAL.



MINI Yours Piano Black interior style, illuminated



MINI Yours Fibre Alloy interior style, illuminated

¹ Seats don't include lumbar support. ² Seats include lumbar support. * Some sections of the seat and interior feature synthetic leather.

THE MINI COUNTRYMAN. JOURNEY BIG.

The MINI Countryman is a versatile, five-seater Sport Activity Vehicle. As big as it feels on the inside, the Countryman is still a MINI through and through. Gliding through the city, coasting through the mountains – it's all effortless. It's just under 4.3 metres long, which means it has some serious luggage capacity in addition to ample legroom.

With powerful engines and optional ALL4 all-wheel-drive, it tackles even the trickiest terrain with ease. So what are you waiting for? The world won't explore itself.

STANDARD EQUIPMENT HIGHLIGHTS.

EXTERIOR:

- LED headlights
- LED fog lights
- LED rear lights with Union Jack design
- Roof rails in silver

INTERIOR:

- Ambient Lighting
- Floor mats
- Interior lights pack
- Multi-function controls for steering wheel
- Passenger seat height adjustment

INFOTAINMENT:

- DAB digital radio
- Media Pack, including:
 - 8.8" centre display screen
 - Apple CarPlay
 - Bluetooth hands free function with USB audio
- ConnectedDrive Services (including Online Search and Weather Information)
- Intelligent emergency calling (E-call)
- MINI Connected
- Remote Services

- Navigation Pack, including:
 - Navigation System
 - Real Time Traffic Information (RTTI)

TECHNOLOGY:

- Cruise control with brake function
- Rain sensor and automatic headlight activation
- Rear Park Distance Control



LED headlights



Navigation system with 8.8" centre display screen, included in the Navigation Pack



Multi-function controls for steering wheel



LED rear lights (shown with optional Piano Black Exterior)



Rear Park Distance Control



Roof rails in silver

ADVENTURE IS WAITING.

The best views are at the top, and ALL4 gets you there. The optional intelligent all-wheel-drive system¹ provides optimal traction and maximum stability when you need it, down dirt tracks, cobbled streets or even across the snowy plains. It distributes power dynamically between the front and rear axles, helping you power your way out of tough situations. Now you can really run wild.

Step up your off-road factor with the rugged ALL4 Exterior Optic Pack. Optionally available on Classic and Exclusive styles (exclusively on MINI Countryman), it features a new look which includes the addition of three silver trim surrounds on the lower air intake ducts of the front bumper, with matching silver sections on the rear bumper.



THE ONLY THING THAT SHOULD STOP YOU IS THE VIEW.

While you're on the road, you can keep things where you want them with the luggage compartment separating net, included in the optional MINI Activity Pack². It offers stability and support to items that might move or roll around during the drive. In the MINI Countryman, the only thing that's going to stop you is the view. Luckily there's a two-seat picnic bench (also available as part of the optional MINI Activity Pack²) for moments just like these. Just flip it out from the tailgate and soak up the sunset. It comes with a fender dirt protection flap, so you can keep the backs of your trousers clean while you take in the view.



Luggage compartment separating net, included in the MINI Activity Pack (optional)



Picnic bench, included in the MINI Activity Pack (optional)

¹ The ALL4 all-wheel-drive is an intelligent torque vectoring system that maximises traction on virtually any surface. Its electrohydraulic multi-disc clutch is linked to Dynamic Stability Control and smoothly varies the amount of drive torque distributed from the MINI TwinPower Turbo engine to the front and rear axles according to the driving situation. ² The MINI Activity Pack includes a larger-capacity Fuel Tank, automatic operation of tailgate, a luggage compartment separating net, rear seat adjustment and a picnic bench.

STYLE OPTIONS. THE MINI COUNTRYMAN.



CLASSIC.



ALLOY WHEELS.

STANDARD.



COOPER / ALL4
16" Revolute Spoke alloy wheels in silver

COOPER S / S ALL4 / S E ALL4 PHEV
17" Imprint Spoke alloy wheels in silver

OPTIONAL.



18" Pin Spoke alloy wheels in silver

18" Pin Spoke alloy wheels in black

17" Channel Spoke alloy wheels in black

17" Imprint Spoke alloy wheels in silver

SEATS AND UPHOLSTERIES.

STANDARD.



COOPER / ALL4 / S E ALL4 PHEV
Standard seats with Firework cloth upholstery in Carbon Black¹



COOPER S / S ALL4
Sport seats with Double Stripe cloth upholstery in Carbon Black¹

OPTIONAL.



Sport seats with Leatherette upholstery in Carbon Black¹

INTERIOR TRIMS.

STANDARD.

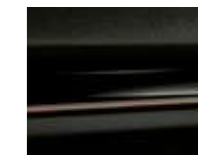


COOPER / ALL4
Hazy Grey interior trim



COOPER S / S ALL4 / S E ALL4 PHEV
Piano Black interior trim

OPTIONAL.



COOPER / ALL4
Piano Black interior trim

SPORT.



ALLOY WHEELS.

STANDARD.



18" John Cooper Works Grip Spoke alloy wheels in silver

OPTIONAL.



19" John Cooper Works Circuit Spoke alloy wheels in two-tone

SEATS AND UPHOLSTERIES.

STANDARD.



John Cooper Works sport seats with Dinamica / cloth upholstery in Carbon Black¹

OPTIONAL.



John Cooper Works sport seats with Dinamica / leather upholstery in Carbon Black²



Sport seats with Cross Punch leather* upholstery in Carbon Black²

INTERIOR TRIMS.

STANDARD.



John Cooper Works Piano Black interior trim

EXCLUSIVE.



ALLOY WHEELS.

STANDARD.



19" MINI Yours British Spoke alloy wheels in two-tone

OPTIONAL.



19" Turnstile Spoke alloy wheels in two-tone



18" Pair Spoke alloy wheels in silver

SEATS AND UPHOLSTERIES.

STANDARD.



Sport seats with MINI Yours Lounge leather upholstery in Carbon Black²

OPTIONAL.



Sport seats with Chester leather* upholstery in Satellite Grey²



Sport seats with Chester leather* upholstery in Indigo Blue²



Sport seats with Chester leather* upholstery in Malt Brown²

INTERIOR STYLES.

STANDARD.



MINI Yours Shaded Silver interior style

OPTIONAL.



MINI Yours Piano Black interior style, illuminated

¹ Seats don't include lumbar support. ² Seats include lumbar support. * Some sections of the seat and interior feature synthetic leather.

THE MINI COUNTRYMAN PLUG-IN HYBRID.

AGILITY ELECTRIFIED.



MINI ELECTRIC



Model featured: The MINI Countryman Plug-in Hybrid Exclusive with optional White Silver exterior paint, black roof and mirror caps, Piano Black Exterior, black roof rails, darkened rear glass and Adaptive LED headlights.

The MINI Countryman Plug-in Hybrid combines an electric motor and battery with a conventional petrol engine to offer drivers the best of both worlds with a total output of 220 hp enabling thrilling acceleration from 0 to 62 mph in 6.8 seconds. The e-motor backs up the petrol engine via the boost function and enables electric all-wheel-drive. Standard features include eDrive Services (with the ability to initiate charging, monitor charging status and locate public charging stations), MINI Navigation system with 8.8" centre display screen ① and MINI Driving Modes ②. AC home and AC public charging cables are also available as standard. The battery can be charged both during the journey and externally using the supplied cables ③.

STANDARD EQUIPMENT HIGHLIGHTS.

IN ADDITION TO THE MINI COUNTRYMAN COOPER S STANDARD EQUIPMENT.

- Automatic transmission
- High voltage battery and electric motor
- AC charging
(charging flap on front left lower A-panel)
- AC home (occasional 3-pin plug) charging cable (type 2 – 2.3 kW)
- AC public charging cable (type 2 – 3.7 kW)
- MINI Charging
(access to thousands of public charging points in the UK across a range of providers, using just one RFID card or via a mobile app)*
- Acoustic pedestrian protection
(external driving noise generated when driving at speeds less than 19 mph in pure electric mode to aid pedestrian safety)
- ALL4 Electric
(rear axle powered by electric motor and front axle powered by combustion engine)
- Chargeable battery during driving
- eDrive button
(change the powertrain preference to AUTO eDRIVE, MAX eDRIVE or SAVE BATTERY)
- eDrive Services
(ability to initiate charging, monitor charging status and locate public charging stations)
- MINI Driving Modes
(centre toggle switch to control driving mode settings: Sport, Mid, Green; allows adaption to different driving situations and ensures a high driving efficiency and the optimal electric range)
- Preconditioning
(remotely heat or cool the vehicle prior to departure through the MINI App)

The MINI Countryman Plug-in Hybrid is available in Classic, Sport or Exclusive style, for more information about the equipment available with each style please [click here](#).

TECHNICAL DATA.

PERFORMANCE:

Petrol engine	Electric motor	Combined
- Max. output: 125 hp	- Max. output: 95 hp	- System output: 220 hp
- Max. torque: 220 Nm	- Max. torque: 165 Nm	- 0-62 mph: 6.8 seconds
		- System torque: 385 Nm

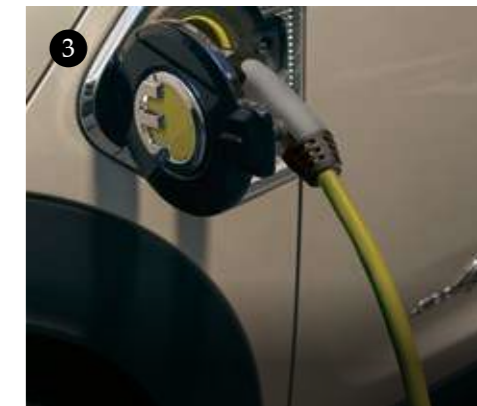
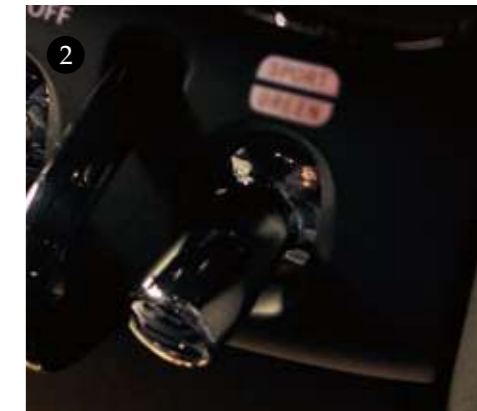
BATTERY:

- Battery type: Lithium-Ion	- Net battery content (high voltage): 8.8 kWh
- Gross battery content (high voltage): 10 kWh	- Battery capacity (high voltage): 34 Ah

RANGE AND CONSUMPTION[^]:

- All Electric Range: 28.0 – 29.8 miles	- Electric energy consumption (weighted combined): 4.0 – 4.2 miles/kWh (15.4 – 14.8 kWh/100 km)
- Equivalent All Electric Range: 29.2 – 31.7 miles	- CO ₂ emissions (weighted combined): 44 – 40 g/km
- Fuel consumption (weighted combined): 148.7 – 166.2 mpg (1.9 – 1.7 l/100 km)	

[^] For more information about MINI Charging please visit [MINI-Charging.com](#) [^] These figures were obtained using a combination of battery power and fuel. The MINI Countryman Plug-in Hybrid is a plug-in hybrid vehicle requiring mains electricity for charging. Figures shown are for comparability purposes. Only compare fuel consumption, CO₂ and electric range figures with other cars tested to the same technical procedures. These figures may not reflect real life driving results, which will depend upon a number of factors including the starting charge of the battery, accessories fitted (post-registration), variations in weather, driving styles and vehicle load. The CO₂ figures have been determined according to the WLTP test.






CONVENIENT CHARGING SOLUTIONS. THE MINI COUNTRYMAN PLUG-IN HYBRID.



EASY HOME CHARGING OR CHARGING ON THE GO.

The MINI Countryman Plug-in Hybrid includes AC for easy home and public charging.

- 
CHARGING CABLES.
 The MINI Countryman Plug-in Hybrid comes with both an AC occasional home charging cable (3-pin plug) and an AC public charging cable (type 2 – 3.7 kW) as standard.
- 
PUBLIC CHARGING.
 AC public charging is available with the MINI Countryman Plug-in Hybrid. Just activate your MINI Charging account to access thousands of public charging points in the UK.
- 
HOME CHARGING.
 You can charge your car at home using the occasional 3-pin plug home charging cable or your Homecharge unit.¹



CHARGING TIME.²

Home charging (AC)		
With occasional home charging cable (3-pin plug)	2.3 kW	3 hours 48 minutes ³
With Homecharge unit ¹	3.7 kW	2 hours 24 minutes ^{4,5}
Public charging (AC)		
With AC public charging	3.7 kW	2 hours 24 minutes ⁴

MINI CHARGING.

MINI Charging is your gateway to one of the world's largest public charging networks. You will have access* to thousands of public charging points in the UK across a range of providers, using just one RFID card or via a mobile app. What's more, your MINI Charging account is also valid across Europe. You can monitor your charging history directly from your account, and you can find MINI Charging locations via the MINI Charging App or on MINI-Charging.com

MINI Charging also comprises a one-year free upgrade to include a bp pulse subscription package, offering discounted and preferential charging rates at bp pulse points (normally worth £7.85 per month).

PARTNERSHIP WITH BP PULSE.

For home charging you can use the bp pulse Homecharge unit. For more information please visit mini-electric.bpchargemaster.com



* For more information about MINI Charging please visit MINI-Charging.com ¹Source: Zap-Map. ¹The Homecharge unit is not included in the price of the car, it has to be purchased separately. For more information please speak to your MINI Retailer. ²Charging time corresponds to an 80% charge. Charging times are approximate and may vary depending on various factors such as the type and condition of the charger and the temperature of the battery at the point of use. ³A 100% charge is achieved in 5 hours. ⁴A 100% charge is achieved in 3 hours 12 minutes. ⁵Charging time applies to any 3.7 kW Homecharge unit.

THE MINI CLUBMAN AND COUNTRYMAN SHADOW EDITION.

MINIS WITH BIG ATTITUDE.



Models featured: The MINI Clubman Shadow Edition Cooper S and MINI Countryman Shadow Edition Cooper S.

The Shadow Edition's sleek look and bold attitude push the playful MINI spirit to new levels. This sporty and masculine inspired special edition offered on Clubman and Countryman models comes with either a Cooper petrol engine, a powerful Cooper S petrol engine or as a plug-in hybrid (on MINI Countryman only). Based on the Sport style, the Shadow Edition is given a definitively grown-up look thanks to the Midnight Black metallic exterior paint colour, Piano Black Exterior and 19" John Cooper Works Circuit Spoke alloy wheels in two-tone. It focuses on blacked out features with contrasting silver roof, mirror caps and decal highlights. The bespoke Shadow Edition logo, embellished with a unique design, can be spotted on the side scuttles, bonnet, roof, dashboard interior trim and door sill finishers too. These specific Shadow decals offer changing tones and textures depending on the light conditions which are highlighted by the contrasting silver details. You can also personalise your limited edition thanks to various options[†] and the choice between manual and automatic transmission. So what are you waiting for?

The Shadow Edition is also available with the MINI Hatch, Convertible and Electric models, for more information please [click here](#).

STANDARD EQUIPMENT HIGHLIGHTS.

IN ADDITION / REPLACEMENT TO THE MINI CLUBMAN OR COUNTRYMAN COOPER, COOPER S OR PLUG-IN HYBRID (ON MINI COUNTRYMAN ONLY) SPORT STANDARD EQUIPMENT.[†]

EXTERIOR:

- 19" John Cooper Works Circuit Spoke alloy wheels in two-tone
- Black roof rails (MINI Countryman models only)
- Midnight Black metallic exterior paint colour
- Piano Black Exterior

- Shadow Edition decal on bonnet
- Shadow Edition design on A-panel with integrated side scuttle trim (excluding MINI Countryman Plug-in Hybrid)
- Shadow Edition exterior logo on roof
- Silver roof and mirror caps

INTERIOR:

- Anthracite headlining
- Door sill finishers with Shadow Edition design and logo
- MINI logo projection
- Piano Black interior trim with Shadow Edition logo



Shadow Edition exterior logo on silver roof (MINI Countryman roof shown above)



Shadow Edition design on A-panel with integrated side scuttle trim (MINI Countryman A-panel shown above)



Piano Black interior trim with Shadow Edition logo (MINI Clubman dashboard shown above)

The Shadow Edition standard equipment comprises fixed specification including unique Shadow Edition features, the Sport standard equipment features as well as a few locked options such as the exterior paint colour, the contrasting roof and mirror caps, the alloy wheels, the interior trim, Piano Black Exterior, and roof rails in black on Countryman models.

[†] For more information about the MINI Clubman and Countryman Cooper, Cooper S and Plug-in Hybrid Sport standard and optional equipment, please refer to the MINI Clubman and the MINI Countryman price lists.

JOHN COOPER WORKS.

THE MINI HATCH AND CONVERTIBLE JOHN COOPER WORKS.



Models featured: The MINI Hatch John Cooper Works and the MINI Convertible John Cooper Works, both with optional roof (not on Convertible) and mirror caps in red, John Cooper Works bonnet stripes, 18" John Cooper Works Course Spoke alloy wheels in two-tone and Adaptive LED headlights.

Discover the MINI Hatch John Cooper Works and the MINI Convertible John Cooper Works.

Powerful and competitive, the MINI John Cooper Works is a challenger. Performance is paramount and superior style a given. Available as stand-alone offering, meaning they come with their own engine and style, the John Cooper Works models are packed with enhanced standard specification including John Cooper Works features inspired by the Mini racing heyday, giving you all you need for higher output on the road.

Both models come with standard Sport Suspension for optimal road-holding as well as standard John Cooper Works aerodynamic kit. The rumble of the John Cooper Works sport exhaust is an extra treat for your ears – especially in the MINI Convertible John Cooper Works when driving with the top down.

STANDARD EQUIPMENT HIGHLIGHTS.

IN ADDITION TO NON JOHN COOPER WORKS MODELS STANDARD EQUIPMENT.

EXTERIOR:

- 17" John Cooper Works Track Spoke alloy wheels in black
- John Cooper Works aerodynamic kit
- John Cooper Works spoiler¹
- John Cooper Works sport exhaust
- Piano Black Exterior
- Radiator grille with honeycomb structure in black and John Cooper Works logo
- Rebel Green exterior paint colour
- Red brake calipers with John Cooper Works logo
- Side scuttle in black with Chili Red border and John Cooper Works logo
- Tailpipe finisher in chrome

INTERIOR:

- Anthracite headlining¹
- John Cooper Works door sill finishers
- John Cooper Works sport seats with Dinamica / leather upholstery in Carbon Black
- Piano Black interior trim
- Rubberised stainless steel pedals
- Walknappa steering wheel with John Cooper Works badge

PERFORMANCE AND TECHNOLOGY:

- 17" sport brakes
- MINI Driving Modes (Sport, Mid, Green)
- Sport Suspension

ALLOY WHEELS.

STANDARD.



17" John Cooper Works Track Spoke alloy wheels in black

OPTIONAL.



18" John Cooper Works Course Spoke alloy wheels in two-tone

SEATS AND UPHOLSTERIES.

STANDARD.



John Cooper Works sport seats with Dinamica / leather upholstery in Carbon Black²

OPTIONAL.



Sport seats with MINI Yours Lounge leather upholstery in Carbon Black²



Sport seats with Chester leather* upholstery in Satellite Grey²



Sport seats with Chester leather* upholstery in Malt Brown²

INTERIOR TRIMS.

STANDARD.



Piano Black interior trim

OPTIONAL.



Aluminium interior trim



Silver Chequered interior trim

¹ Not with MINI Convertible John Cooper Works. ² Seats include lumbar support. * Some sections of the seat and interior feature synthetic leather.

JOHN COOPER WORKS 306HP.

THE MINI CLUBMAN AND COUNTRYMAN JOHN COOPER WORKS 306HP.



Models featured: MINI Clubman John Cooper Works 306hp and MINI Countryman John Cooper Works 306hp, both with optional roof and mirror caps in red, John Cooper Works sport stripes in red, 19" John Cooper Works Circuit Spoke alloy wheels in two-tone and Adaptive LED headlights. The MINI Countryman John Cooper Works 306hp also features optional roof rails in black.

The MINI Clubman John Cooper Works 306hp combines fascinating extremes and sophisticated style. It has 6 doors, it's stylish and a lot of fun to drive. It cuts an imposing figure too, but slips smoothly through the oncoming wind thanks to the standard John Cooper Works aerodynamic kit. Impressive performance, unique design and versatility – it's all here.

As the ultimate Sport Activity Vehicle, the MINI Countryman John Cooper Works 306hp blends exceptional capability with inspired driving wherever it goes. The standard ALL4 all-wheel-drive provides exciting off-road abilities to go with its powerful forward thrust and extreme traction – just in case you find yourself off paved roads and really want to hit the accelerator.

STANDARD EQUIPMENT HIGHLIGHTS.

IN ADDITION TO NON JOHN COOPER WORKS MODELS STANDARD EQUIPMENT.

EXTERIOR:

- 18" John Cooper Works Grip Spoke alloy wheels in black
- John Cooper Works aerodynamic kit
- John Cooper Works spoiler
- John Cooper Works sport exhaust
- Piano Black Exterior
- Radiator grille with honeycomb structure in black and John Cooper Works logo
- Rebel Green exterior paint colour
- Red brake calipers with John Cooper Works logo
- 'Side scuttle in black with Chili Red border and John Cooper Works logo

INTERIOR:

- Anthracite headlining
 - John Cooper Works door sill finishers
 - John Cooper Works Piano Black interior trim¹
 - John Cooper Works sport seats with Dinamica / leather upholstery in Carbon Black
 - Piano Black interior trim²
 - Rubberised stainless steel pedals
 - Walknappa steering wheel with John Cooper Works badge
- Comfort Plus Pack, including:
 - Automatic air conditioning
 - Comfort Access System (keyless vehicle access)
 - Folding and auto-dimming mirrors including MINI logo projection
 - Front centre armrest
 - Parking Assistant including Front Park Distance Control
 - Rear view camera
 - Seat heating
 - Storage compartment pack
 - MINI Driving Modes (Sport, Mid, Green)
 - Sport automatic transmission (8-speed)
 - Sport Suspension
 - Torsen mechanical differential

PERFORMANCE AND TECHNOLOGY:

- 17" sport brake discs with 4-piston calipers
- ALL4 all-wheel-drive system

ALLOY WHEELS.

STANDARD.



18" John Cooper Works Grip Spoke alloy wheels in black

OPTIONAL.



19" John Cooper Works Circuit Spoke alloy wheels in two-tone

SEATS AND UPHOLSTERIES.

STANDARD.



John Cooper Works sport seats with Dinamica / leather upholstery in Carbon Black³

OPTIONAL.



Sport seats with MINI Yours Lounge leather upholstery in Carbon Black³



Sport seats with Chester leather* upholstery in Satellite Grey³



Sport seats with Chester leather* upholstery in Indigo Blue³



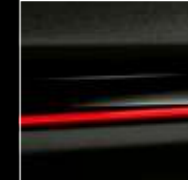
Sport seats with Chester leather* upholstery in Malt Brown³

INTERIOR TRIMS.

STANDARD.



Piano Black interior trim²



John Cooper Works Piano Black interior trim¹

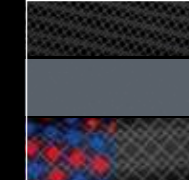
OPTIONAL.



MINI Yours Piano Black interior style, illuminated²



MINI Yours Piano Black interior style, illuminated¹



MINI Yours Frozen Blue interior style, illuminated²

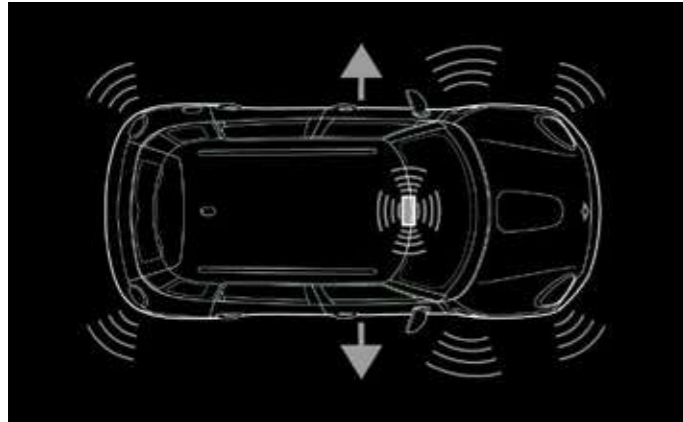


MINI Yours Shaded Silver interior style¹

¹ MINI Countryman John Cooper Works 306hp only. ² MINI Clubman John Cooper Works 306hp only. ³ Seats include lumbar support. * Some sections of the seat and interior feature synthetic leather.

SAFETY RUNS IN THE FAMILY.

You can never be too secure. That's why every MINI is packed with safety features as standard, including Dynamic Stability Control and the latest generation Antilock Braking System.



CRASH-TEST GENIUS.

In the event of an impact accident, doors unlock, interior and hazard lights turn on and the fuel pump shuts down. When a car can think for itself in the event of an accident, you know it's pretty brilliant.

INTELLIGENT EMERGENCY CALLING (E-CALL).

If necessary or in an emergency, E-call establishes a connection to emergency and rescue services through a Call Centre. The vehicle's current location is transmitted along with additional data depending on the severity of the accident.

STANDARD SAFETY FEATURES

Intelligent emergency calling (E-call)

3-point seat belts, in all seats, including belt stopper, pyrotechnic belt tightener and belt force limiter in front

Airbags for driver and front passenger, 8 airbags as standard; 2 front, 2 side and 4 head airbags

Antilock Braking System (ABS) including Cornering Brake Control (CBC)

Autonomous Emergency Braking (AEB) system* including Forward Collision Warning (FCW) and City Collision Mitigation (CCM)

Dynamic Brake Lights

Crash sensor, for airbag deployment and activating hazard warning flashers and interior light, unlocking the doors and activating fuel cut-off

Dynamic Stability Control (DSC), including Automatic Stability Control + Traction (ASC+T), Electronic Brake Force Distribution (EBD), Brake Drying and Hill Assist

Dynamic Traction Control (DTC) with Electronic Differential Lock Control (EDLC)

Fuel pump with automatic cut-off in crash situation

Tyre Pressure Warning System (TPWS), passive monitoring of all 4 wheels with status indicator light



* Only standard on MINI Clubman and the MINI Countryman models.

THE MINI APP.

The MINI App is the digital partner to your MINI, connecting you to your car at any time and any place. It helps you to stay informed whilst taking a fresh, modern and intuitive approach. From checking the health and status of your MINI, planning your next adventure, managing the servicing requirements of your MINI or controlling a variety of functions remotely – the MINI App unlocks a world of possibilities and opportunity from the convenience of your phone.

STAY CONNECTED.

With the MINI App, you can immediately benefit from an ever-growing range of convenient features and functions.

CHECK IN.

- Car locked? Windows closed? Fuel needed? Check in at any time to view the status of your MINI from anywhere
- Confirm the last location of your car via the built-in map
- If you're lucky enough to drive more than one MINI, you can switch between cars using the Garage View

TAKE CONTROL.

- Remotely lock and unlock your car with a touch of a button for 24/7 peace of mind
- Ventilate the interior of your MINI prior to your journey
- Pre-heat and condition the cabin for Plug-in Hybrid and electric models

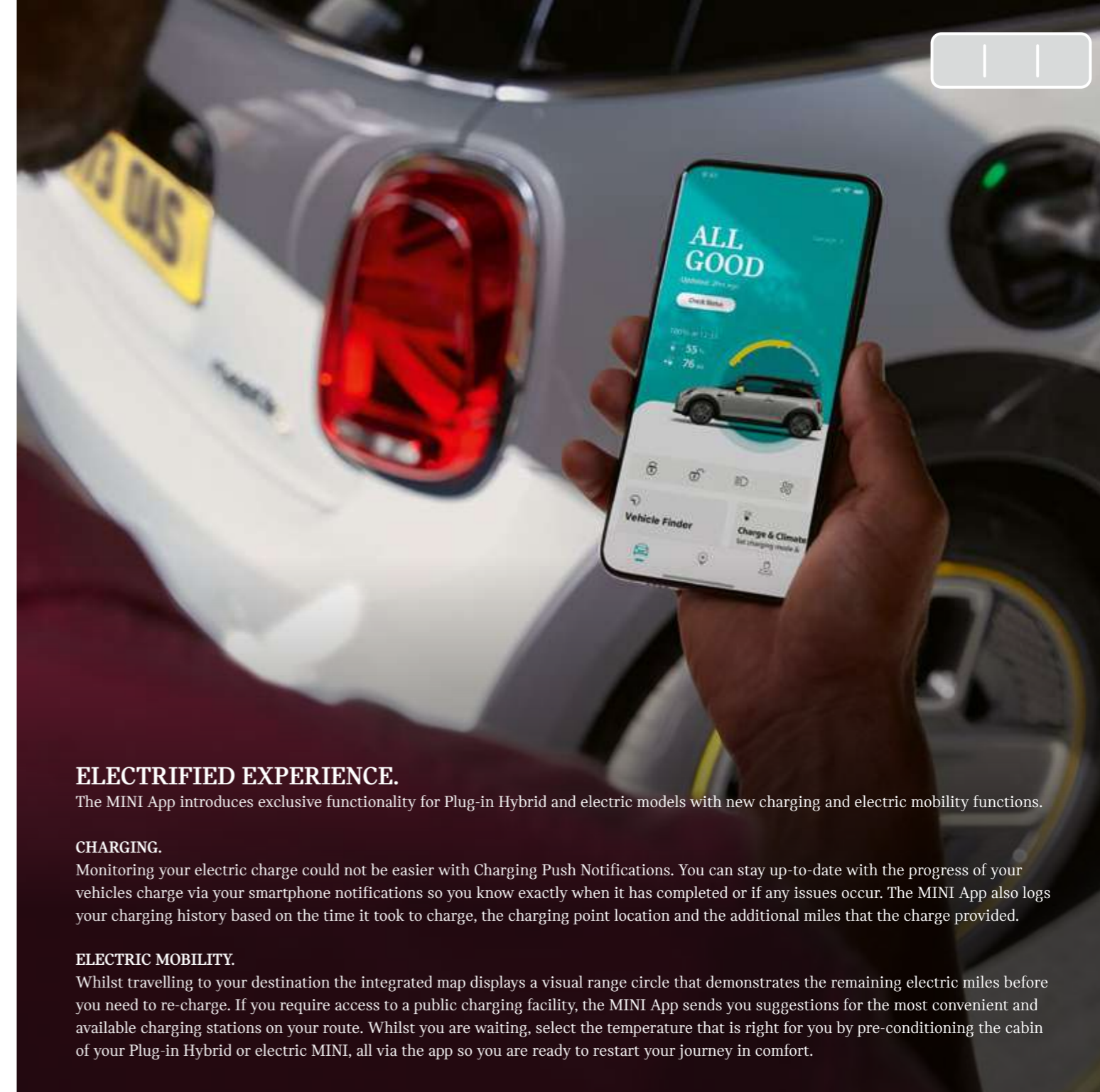
PLAN TRIPS.

- Search and save addresses and Points of Interest
- Plan ahead and send destinations straight to your MINI
- Review routes, traffic and find possible parking options at your destination

CHECK UP.

- View your vehicle health status for essential maintenance
- Check and receive notifications for any servicing requirements
- Direct access to MINI Roadside Assistance support
- Search for your local MINI Retailer

For more information about the MINI App please check out the [MINI App Discovery Guide](#) or visit mini.co.uk/connected



ELECTRIFIED EXPERIENCE.

The MINI App introduces exclusive functionality for Plug-in Hybrid and electric models with new charging and electric mobility functions.

CHARGING.

Monitoring your electric charge could not be easier with Charging Push Notifications. You can stay up-to-date with the progress of your vehicles charge via your smartphone notifications so you know exactly when it has completed or if any issues occur. The MINI App also logs your charging history based on the time it took to charge, the charging point location and the additional miles that the charge provided.

ELECTRIC MOBILITY.

Whilst travelling to your destination the integrated map displays a visual range circle that demonstrates the remaining electric miles before you need to re-charge. If you require access to a public charging facility, the MINI App sends you suggestions for the most convenient and available charging stations on your route. Whilst you are waiting, select the temperature that is right for you by pre-conditioning the cabin of your Plug-in Hybrid or electric MINI, all via the app so you are ready to restart your journey in comfort.

GENUINE MINI ACCESSORIES.

Showcase your personality, add a range of Genuine MINI Accessories to enhance the look and feel of your vehicle or create motorsport flair by accessorising your MINI with optional John Cooper Works Accessories. Your local MINI Retailer will have everything on hand for both new cars and retrofitting to your current MINI.

OUR RANGE OF ACCESSORIES INCLUDES:

- Complete Alloy Wheels and Tyres
- John Cooper Works Accessories
- Mirror Caps
- Side Scuttles
- Bonnet, Side and Roof Decals
- Technology and Lighting
- Travel Solutions
- Dog Guards

For further information about the Genuine MINI Accessories range available, please visit mini.co.uk/accessories



Model featured: The MINI Countryman Plug-in Hybrid Exclusive with optional White Silver exterior paint, black roof, Piano Black Exterior, black roof rails, darkened rear glass and Adaptive LED headlights as well as the Genuine MINI Accessories including MINI Night Jack Mirror Caps, MINI Sport Stripes in Jet Black, MINI ALL4 badge in Piano Black, MINI Roof Box 320l with MINI Roof Box Stripes in White and Roof Rack.



MINI Night Jack Mirror Caps



17" John Cooper Works Multi Spoke 505 alloy wheels in Jet Black

TECHNICAL DATA.

MINI 3-DOOR HATCH.

MODEL	MINI 3-DOOR HATCH ONE	MINI 3-DOOR HATCH COOPER [†]	MINI 3-DOOR HATCH COOPER S [†]	MINI HATCH JOHN COOPER WORKS	MINI ELECTRIC [‡]
Regulated emissions standard	EU6 – RDE2 Compliant	EU6 – RDE2 Compliant	EU6 – RDE2 Compliant	EU6 – RDE2 Compliant	n/a [^]
Capacity (cc)	1499	1499	1998	1998	n/a [^]
Power output (hp)	102	136	178	231	184
Torque (Nm/rpm)	190 / 1380-3600	220 / 1500-4100	280 / 1350-4200	320 / 1450-4800	270 / n/a [^]
0-62 mph (secs)	10.3 [10.3]	8.2 [8.1]	6.7 [6.6]	6.3 [6.1]	[7.3]
Top speed (mph)	120 [120]	130 [130]	146 [146]	153 [153]	[93]

Fuel consumption and CO₂ emissions^{*}

Fuel consumption – combined (mpg)	50.4-52.3 [50.4-51.4]	47.9-51.4 [47.9-51.4]	43.5-45.6 [45.6-48.7]	39.8-41.5 [40.9-42.8]	n/a [^]
Fuel consumption – combined (l/100km)	5.6-5.4 [5.6-5.5]	5.9-5.5 [5.9-5.5]	6.5-6.2 [6.2-5.8]	7.1-6.8 [6.9-6.6]	n/a [^]
CO ₂ emissions (g/km)	126-122 [128-124]	133-124 [134-124]	148-140 [141-133]	162-156 [156-150]	[0] [^]

Dimensions

Length ¹ (mm)	3863	3863	3876	3872	3850
Width incl. door mirrors (mm)	1928	1928	1928	1928	1928
Vehicle height (mm)	1414	1414	1414	1414	1432
Fuel tank capacity (litres)	40	40	44	44	n/a [^]
Luggage capacity ² (litres)	211-731	211-731	211-731	211-731	211-731

MINI 5-DOOR HATCH.

MODEL	MINI 5-DOOR HATCH ONE	MINI 5-DOOR HATCH COOPER [†]	MINI 5-DOOR HATCH COOPER S [†]
Regulated emissions standard	EU6 – RDE2 Compliant	EU6 – RDE2 Compliant	EU6 – RDE2 Compliant
Capacity (cc)	1499	1499	1998
Power output (hp)	102	136	178
Torque (Nm/rpm)	190 / 1380-3600	220 / 1500-4100	280 / 1350-4200
0-62 mph (secs)	10.6 [10.6]	8.4 [8.3]	6.8 [6.7]
Top speed (mph)	119 [119]	129 [129]	146 [146]

Fuel consumption and CO₂ emissions^{*}

Fuel consumption – combined (mpg)	50.4-51.4 [49.6-51.4]	47.9-51.4 [47.1-51.4]	42.8-45.6 [44.8-47.9]
Fuel consumption – combined (l/100km)	5.6-5.5 [5.7-5.5]	5.9-5.5 [6.0-5.5]	6.6-6.2 [6.3-5.9]
CO ₂ emissions (g/km)	128-124 [130-126]	135-125 [136-126]	150-141 [144-134]

Dimensions

Length ¹ (mm)	4023	4023	4036
Width incl. door mirrors (mm)	1928	1928	1928
Vehicle height (mm)	1425	1425	1425
Fuel tank capacity (litres)	40	40	44
Luggage capacity ² (litres)	278-941	278-941	278-941

All figures relate to vehicles with 6-speed manual transmission. Figures in [] relate to vehicles with automatic transmission. [†]Range shown includes Shadow Edition models data. ^{*} Figures shown are for comparability purposes; only compare fuel consumption and CO₂ figures with other cars tested to the same technical procedures. These figures may not reflect real life driving results, which will depend upon a number of factors including the accessories fitted (post-registration), variations in weather, driving styles and vehicle load. The CO₂ figures shown have been determined according to the WLTP test. WLTP has been used as the applicable CO₂ figure from 1 April 2020 for first year vehicle tax (VED) and from 6 April 2020 for company car tax (BIK). The CO₂ figures were previously based on the NEDC equivalent.

[^]The MINI Electric is a battery electric vehicle requiring mains electricity for charging. ¹ Sport models are slightly longer due to the John Cooper Works aerodynamic kit fitted as part of the standard equipment. ² Luggage capacity varies depending on whether the rear seats are up or folded down.

TECHNICAL DATA.

MINI CONVERTIBLE.

MODEL	MINI CONVERTIBLE COOPER [†]	MINI CONVERTIBLE COOPER S [†]	MINI CONVERTIBLE JOHN COOPER WORKS
Regulated emissions standard	EU6 – RDE2 Compliant	EU6 – RDE2 Compliant	EU6 – RDE2 Compliant
Capacity (cc)	1499	1998	1998
Power output (hp)	136	178	231
Torque (Nm/rpm)	220 / 1500-4100	280 / 1350-4200	320 / 1450-4800
0-62 mph (secs)	8.8 [8.7]	7.1 [6.9]	6.6 [6.5]
Top speed (mph)	128 [127]	143 [143]	150 [149]

Fuel consumption and CO₂ emissions^{*}

Fuel consumption – combined (mpg)	46.3-47.9 [45.6-47.9]	42.2-43.5 [44.1-45.6]	38.2-39.8 [39.8-40.9]
Fuel consumption – combined (l/100km)	6.1-5.9 [6.2-5.9]	6.7-6.5 [6.4-6.2]	7.4-7.1 [7.1-6.9]
CO ₂ emissions (g/km)	138-134 [140-135]	153-148 [146-141]	167-162 [162-156]

Dimensions

Length ¹ (mm)	3863	3876	3872
Width incl. door mirrors (mm)	1928	1928	1928
Vehicle height (mm)	1415	1415	1415
Fuel tank capacity (litres)	40	44	44
Luggage capacity ² (litres)	160-215	160-215	160-215

MINI CLUBMAN.

MODEL	MINI CLUBMAN COOPER [†]	MINI CLUBMAN COOPER S [†]	MINI CLUBMAN JOHN COOPER WORKS 306HP
Regulated emissions standard	EU6 – RDE2 Compliant	EU6 – RDE2 Compliant	EU6 – RDE2 Compliant
Capacity (cc)	1499	1998	1998
Power output (hp)	136	178	306
Torque (Nm/rpm)	220 / 1500-4100	280 / 1350-4200	450 / 1800-4500
0-62 mph (secs)	9.2 [9.2]	7.3 [7.2]	[4.9]
Top speed (mph)	128 [128]	142 [142]	[155]

Fuel consumption and CO₂ emissions^{*}

Fuel consumption – combined (mpg)	43.5-47.1 [44.1-47.9]	39.8-42.2 [42.8-45.6]	[35.8-38.2]
Fuel consumption – combined (l/100km)	6.5-6.0 [6.4-5.9]	7.1-6.7 [6.6-6.2]	[7.9-7.4]
CO ₂ emissions (g/km)	147-136 [146-135]	161-153 [153-144]	[180-169]

Dimensions

Length ¹ (mm)	4266	4266	4266
Width incl. door mirrors (mm)	2018	2018	2018
Vehicle height (mm)	1441	1441	1441
Fuel tank capacity (litres)	48	48	48
Luggage capacity ³ (litres)	360-1250	360-1250	360-1250

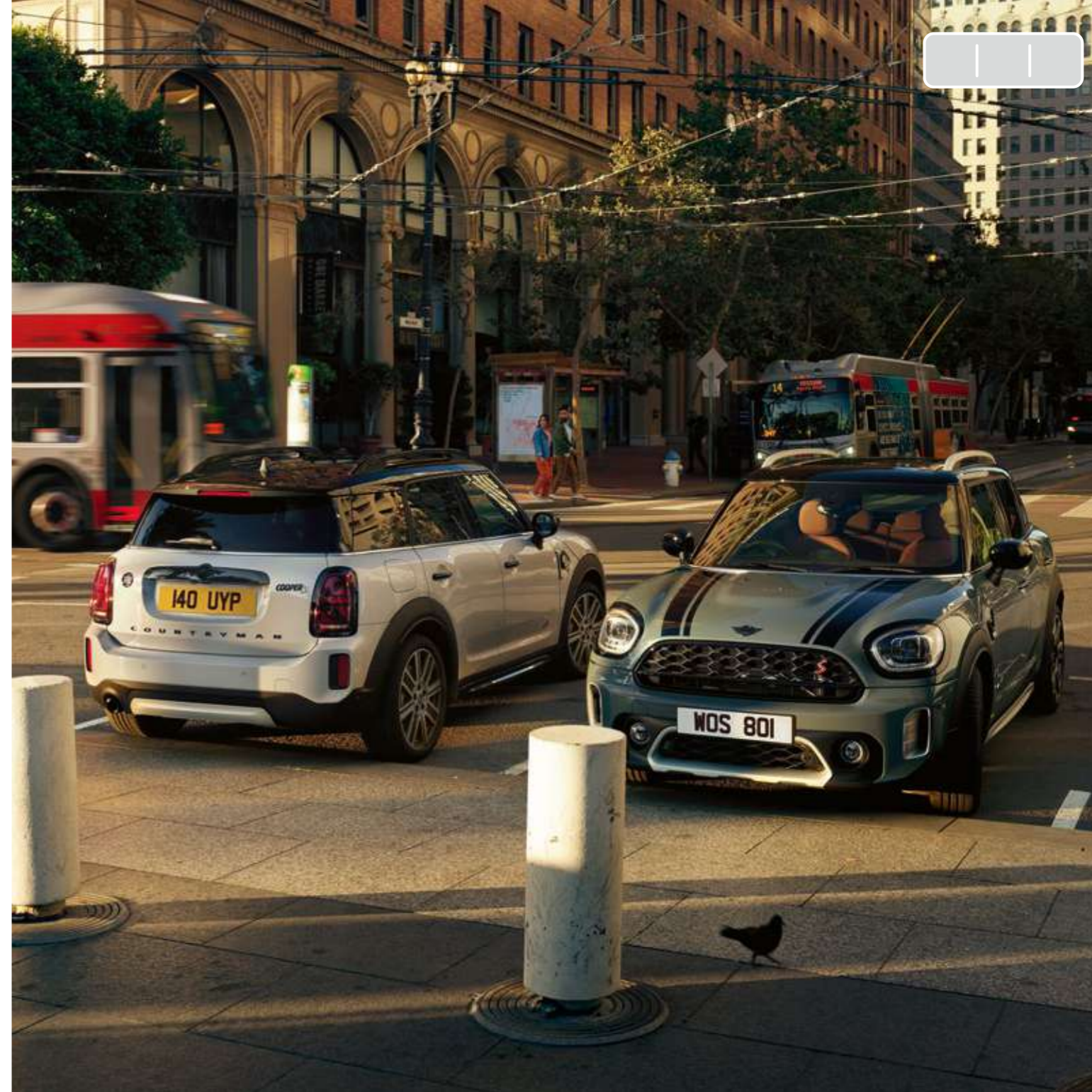
All figures relate to vehicles with 6-speed manual transmission. Figures in [] relate to vehicles with automatic transmission. [†]Range shown includes Shadow Edition models data. ^{*} Figures shown are for comparability purposes; only compare fuel consumption and CO₂ figures with other cars tested to the same technical procedures. These figures may not reflect real life driving results, which will depend upon a number of factors including the accessories fitted (post-registration), variations in weather, driving styles and vehicle load. The CO₂ figures shown have been determined according to the WLTP test. WLTP has been used as the applicable CO₂ figure from 1 April 2020 for first year vehicle tax (VED) and from 6 April 2020 for company car tax (BIK). The CO₂ figures were previously based on the NEDC equivalent. ¹ Sport models are slightly longer due to the John Cooper Works aerodynamic kit fitted as part of the standard equipment. ² Luggage capacity varies depending on whether the roof is up or down. ³ Luggage capacity varies depending on whether the rear seats are up or folded down.

TECHNICAL DATA.

MINI COUNTRYMAN.

MODEL	MINI COUNTRYMAN COOPER [†]	MINI COUNTRYMAN COOPER ALL4	MINI COUNTRYMAN COOPER S [†]	MINI COUNTRYMAN COOPER S ALL4	MINI COUNTRYMAN PLUG-IN HYBRID [†]	MINI COUNTRYMAN JOHN COOPER WORKS 306HP
Regulated emissions standard	EU6 – RDE2 Compliant	EU6 – RDE2 Compliant	EU6 – RDE2 Compliant	EU6 – RDE2 Compliant	EU6 – RDE2 Compliant	EU6 – RDE2 Compliant
Capacity (cc)	1499	1499	1998	1998	1499	1998
Power output (hp)	136	136	178	178	125 ^{**}	306
Torque (Nm/rpm)	220 / 1480-4100	220 / 1480-4100	280 / 1350-4200	280 / 1350-4200	220 ^{**} / 1500-3800	450 / 1800-4500
0-62 mph (secs)	9.7 [9.7]	[10.1]	7.5 [7.4]	[7.3]	[6.8]	[5.1]
Top speed (mph)	127 [127]	[125]	140 [140]	[138]	[122]	[155]
Fuel consumption and CO₂ emissions[*]						
Fuel consumption – combined (mpg)	42.2-44.8 [42.2-44.8]	[38.7-40.9]	40.4-42.2 [42.2-44.1]	[39.2-40.4]	[148.7-166.2] [^]	[34.4-37.2]
Fuel consumption – combined (l/100km)	6.7-6.3 [6.7-6.3]	[7.3-6.9]	7.0-6.7 [6.7-6.4]	[7.2-7.0]	[1.9-1.7] [^]	[8.2-7.6]
CO ₂ emissions (g/km)	152-143 [154-144]	[167-158]	159-152 [153-147]	[165-159]	[44-40] [^]	[188-174]
Dimensions						
Length ¹ (mm)	4297	4297	4297	4297	4297	4297
Width incl. door mirrors (mm)	2001	2001	2001	2001	2001	2001
Vehicle height (mm)	1557	1557	1557	1557	1559	1557
Fuel tank capacity (litres)	51/61	51/61	51/61	51/61	36	51/61
Luggage capacity ² (litres)	450-1390	450-1390	450-1390	450-1390	405-1275	450-1390

All figures relate to vehicles with 6-speed manual transmission. Figures in [] relate to vehicles with automatic transmission. [†]Range shown includes Shadow Edition models data. ^{**}Figures are for the Petrol engine only. ^{*}Figures shown are for comparability purposes; only compare fuel consumption and CO₂ figures with other cars tested to the same technical procedures. These figures may not reflect real life driving results, which will depend upon a number of factors including the accessories fitted (post-registration), variations in weather, driving styles and vehicle load. The CO₂ figures shown have been determined according to the WLTP test. WLTP has been used as the applicable CO₂ figure from 1 April 2020 for first year vehicle tax (VED) and from 6 April 2020 for company car tax (BIK). The CO₂ figures were previously based on the NEDC equivalent. [^]These figures were obtained using a combination of battery power and fuel. The MINI Countryman Plug-in Hybrid is a plug-in hybrid vehicle requiring mains electricity for charging. Fuel consumption and CO₂ figures shown correspond to weighted combined figures. ¹Sport models are slightly longer due to the John Cooper Works aerodynamic kit fitted as part of the standard equipment. ²Luggage capacity varies depending on whether the rear seats are up or folded down.





TAKE THE NEXT STEP.

WHAT ARE YOU WAITING FOR?

For more information: [MINI.co.uk](https://www.mini.co.uk)



 YouTube



The models shown on this brochure feature both standard and optional equipment. For more information, please contact your local MINI Centre. Subject to changes in design and equipment. Technical data shown is correct at the time of publishing and may alter periodically subject to product changes. Information valid for vehicles from January 2022 production. Published in January 2022.