

ASX



Bright spark. Bright future.

At Mitsubishi Motors we've transformed the way we think – our goal is to become a world leader in the reduction of CO₂ emissions on a global scale. We were the very first mainstream manufacturer to bring an electric vehicle to the UK market and are currently developing new plug-in hybrid and flexible fuel cars; all of our vehicles sold here in the UK are at least 90% recyclable and many of our components are made from recycled parts or utilise plant based resins instead of plastics; and we are making smaller and lighter vehicles and employing advanced aerodynamics, fuel efficient tyres and stop-start technologies to name but a few. Of course, small urban vehicles are not a suitable mode of transport for everyone, so we have adopted this new approach across our range. Take the ASX: here we have continued development of an already exceptionally clean new diesel engine to improve its fuel consumption by up to 9% and reduce CO₂ emissions by as much as 8%! And the benefits not only help to save the planet, they help to save you money too with an even lower road tax band.

But at Mitsubishi Motors it's not just our cars that are greener. In our offices we're saving waste, power, packaging and becoming paper-free. And our manufacturing process is cleaner too – we employ sheep to keep the grass short; we've planted hundreds of thousands of trees and eliminated environmentally hazardous substances; our factories are switching to water-based paint and working towards zero landfill waste. And with high-efficiency automation, we're doing much of this with the lights turned off. Our philosophy is one of continual evolution and improvement. **We call this Intelligent Motion.**

INTELLIGENT  *MOTION*





A perfect fit for life

Individual, innovative, versatile, capable, the ASX is the smart and efficient compact crossover with a conscience which is designed to fit your life like a glove. Like so many Mitsubishi models before it, it is also the vehicle which will define driving through the next decade. It comes with a choice of two lightweight, low-environmental impact engines (one petrol, one diesel) a choice of two- or all-wheel drive, top-of-the-class safety features, truly impressive low-emissions

technology, edgy styling, a nimble drive and plenty of room to swallow even the lankiest of families whole. It's quiet on the road with well-weighted steering and a forgiving nature which soaks up the lumps and bumps with ease, and it packs a real punch when you ask it. It's the car which will accommodate your needs and reflect your values, and it will bring a little extra joy into your life along the way.



Low-environmental impact engines

Mitsubishi never stop working to make their engines as clean as possible, which is probably why the ASX's 1.6 litre petrol engine emits just 139 g/km of CO₂ – a class-leading figure. A development of the lively DOHC unit so popular in the Colt, it features Mitsubishi's clever MIVEC variable valve timing technology too, resulting in better starting, reduced emissions at lower engine speeds and greater output power at higher ones. The 1.8 litre diesel option is mated to a six-speed manual transmission and delivers a strong spread of power with plenty of pull low down. The maximum torque of 221 lb.ft. is achieved at just 1750 rpm

making for really relaxed progress and because the compression ratio is exceptionally low it allows the engine to operate quietly at all speeds. Diesel ASXs are available in both two- and all-wheel drive, the latter being a selectable, on-demand system, which means that even when four-wheel drive is selected it is only engaged when required – powering out of junctions or on roundabouts, for example. Of course it really comes into its own for towing, or when the climate or terrain presents you with something rather more challenging than the norm.



Intelligent motion on the road

ASX stands for Active Sports X-over, which is an excellent indication of just how much fun this vehicle is to drive. But the ASX has a very serious side, too: it's one of the vehicles which best illustrates Mitsubishi's Intelligent Motion philosophy on the road. In addition to the low-environmental impact engines – themselves designed to optimize economy and emissions by using low viscosity oil and incorporating a closed flow particulate filter on the diesel engine – the ASX features many other technological innovations with an environmental mission. These include advanced alternator control which increases

battery charging when braking and reduces it during idling, accelerating or cruising, easing the load on the engine for improved fuel consumption; low rolling resistance tyres, which combine with the ASX's excellent aerodynamics to reduce drag; and electric, rather than hydraulic power steering. For even greater efficiency a gear shift indicator, positioned directly in your line of sight between the speedometer and the rev counter, recommends the best shift timing for the prevailing driving conditions. Put together, all this makes the ASX a very clever car indeed.





Just the right style

Sophisticatedly monochromatic, employing a contrasting use of textures and materials for real visual impact; ergonomically designed and generous with equipment, the ASX exhibits considerable style. Even entry-level models come with electric windows, manual air conditioning, seven airbags and stability and traction control, whilst those further up the range include climate control air conditioning, cruise control, rain and dusk sensors, satellite navigation, a Bluetooth hands-free 'phone connection, privacy glass and black leather upholstery.







Just the right substance

The ASX's sharp styling and short overhangs mean that it shoehorns a generous wheelbase into a compact footprint, giving you the very best of both worlds – loads of elbow, leg and head-room inside a vehicle which is just the right size for tackling our overcrowded urban roads. Its tall profile allows even the gangliest teenagers plenty of room in the back and makes the average hatchback seem uncomfortably snug by comparison. Indeed, it's extremely easy to get comfortable in the ASX: the steering wheel, leather

wrapped on most models, adjusts for both rake and reach; the lighting is well planned, there are plenty of pockets, cup-holders and convenience hooks and the overall finish combines quality fabrics with pleasingly soft plastics. The seats, heated in the front on all bar the entry level model, are both comfortable and supportive and the size and positioning of the headrests are specifically designed to provide more support and reduce whiplash in the event of a collision.



The high point

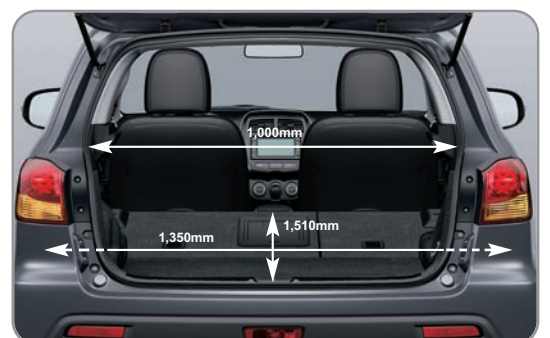
Taller than average dimensions combined with a sloping bonnet provide the slightly elevated view of the road characteristic of an SUV; the raised hip point also makes entry and exit easier and long journeys more comfortable.





Just the right use of space

Decades of experience in designing multi-purpose, seven-seater vehicles, and as one of the very first manufacturers to introduce increased height into compact cars, Mitsubishi are experts in maximising the use of space: the ASX is the epitome of this expertise. It has a capacious, 442 litre boot with wide opening tailgate and low floor for easy access, as well as a large underfloor tray, a 60:40 split rear bench seat with an adjustable back rest, armrest with "ski slot" and an easy-fold to flat facility so that you have the versatility to match your ever-changing needs.







Five stars for safety

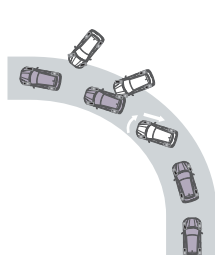
Benefitting from the lessons learned in many of Mitsubishi's larger vehicles, the ASX enjoys a highly rigid body structure which results in improved driving dynamics, greater comfort and, of course, increased safety. It uses Mitsubishi's proprietary RISE (Reinforced Impact Safety Evolution) system to integrate and interconnect the structural elements which provide a dramatic advance in multidirectional impact safety performance, dispersing energy loads during front, side and rear crashes and controlling distortion. These elements include a reinforced girdle body construction, the increased use of high-tensile steel (which also aids in the reduction of weight) and numerous crush box and energy

absorbing structures; even the brake pedal features a push-prevention system designed to reduce injuries to the driver's legs. Active safety features include stability and traction controls and extremely clever brakes, indeed, clever features are a hallmark of this car – even ensuring that the braking action always takes precedence should you inadvertently press the brake and accelerator pedals simultaneously. The result? A coveted top, five-star rating in the independent Euro NCAP safety tests.



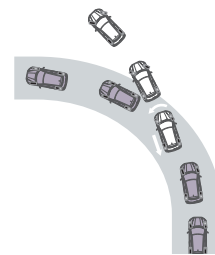
Active Stability Control (ASC)

The Active Stability Control system uses onboard sensors to analyse the vehicle's motion and identify lateral wheel slippage. By governing engine output and applying braking power to the appropriate wheels, ASC helps to maintain stability and control.



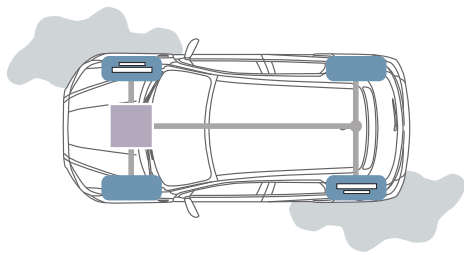
Lateral rear-wheel slippage

Braking force is applied to the outer front wheel to prevent spin-out.



Lateral front-wheel slippage

Braking force is applied to the inner rear wheel to prevent front-end drift.



Traction Control Function

When wheel spin is detected, engine output is governed and braking force is applied to the spinning wheels to prevent driving torque loss ensuring smooth starts and linear acceleration.



With HSA

So much more than ABS

The ASX is a clever car. Take the brakes, for example: ABS of course, complete with EBD which automatically adjusts the brake effort to individual wheels to accommodate the location of weight. Then there is Brake Assist, providing power assistance to boost braking in an emergency situation, an Emergency Stop signal System, which automatically flashes the hazard warning lights at double speed to warn vehicles around you in such a situation, and Hill Start Assist, which maintains the braking force on a hill for about two seconds until the accelerator is applied.



Safety in the bag

All models feature seven airbags, including dual front, side and driver's knee airbags to provide increased safety in the front, whilst curtain airbags provide protection in the event of a side collision. These work in conjunction with specially designed seats and headrests which allow the occupants' bodies to sink into the seats more quickly, thus providing extra support to the head and back and so aiding in the reduction of whiplash.



Enjoy life with the ASX

The ASX is practical yet fun, fast yet frugal. It's easy to drive with willing engines, a well-sorted chassis and clever brakes; easy to park with parking sensors and a rear view camera*, and easy to live with, thanks in part to Mitsubishi's ETACS system which controls all those small but significant details which highlight the difference between a good car and a great one. Little things like headlights which stay on for a pre-programmable duration to light your way home; a highly intelligent wash/wipe system which seems to think for itself; and side mirrors which can automatically retract when you lock the doors, ending those anonymously broken mirrors forever. The ASX goes about its business quietly thanks to clever noise and vibration

isolation, and it's a Mitsubishi so you can expect it to continue doing so day, after day, after day. Indeed, it will bring a smile to your face and keep it there. You'll keep smiling when it comes to running costs too, for a Mitsubishi Service Plan, purchased at the same time as your ASX, is available to cover the first three scheduled services. This ensures that you can enjoy skilled servicing, using only genuine parts and Mitsubishi diagnostic equipment, for a modest sum. The Mitsubishi Service Plan can be included in your vehicle's finance and transferred to a new owner when you sell.

*Selected models only



Warranty, insurance and MAP

All new ASXs come with a comprehensive three-year unlimited mileage warranty** which also includes the Mitsubishi Assistance Package (MAP). Breakdown, accident, theft, vandalism, whatever the reason you need homestart or roadside assistance you're covered 24/7 in over 30 countries throughout Europe. Mitsubishi Motors also offer superior insurance cover which is specifically designed for Mitsubishi vehicles and uses only genuine parts and approved repair centres. And to smooth your progress through an insurance claim, no matter which insurer you use, Mitsubishi First, our accident aftercare programme, handles everything on your behalf – no hassle, no claim forms, no running about, and absolutely no cost to you. It's all part of the special service you get when you buy a Mitsubishi.

**100,000 miles on 4Work commercial model.

ASX 2

1.6 2WD Manual



Key features

- Anti-lock Braking System with EBD, ESS & BA
- Mitsubishi Active Stability and Traction Control (M-ASTC)
- Hill Start Assist
- Dual front, side, curtain and driver's knee SRS airbags
- Alarm with keyless entry
- 16" alloy wheels
- Air conditioning – manual
- Electric windows and heated folding door mirrors
- Steering wheel tilt and reach adjustments
- Height-adjustable driver's seat
- Multi-Information Display (MID)
- Radio/CD/MP3 player with 4 speakers



ASX 3

1.6 2WD Manual
1.8 DI-D 2WD Manual
1.8 DI-D 4WD Manual



Key features

Specification as ASX 2 (2WD) plus:

- 17" alloy wheels
- Privacy glass
- Front fog lamps
- Rear parking sensors
- Front grille chrome surround
- Side window chrome beltline
- Keyless operation system with engine start button
- Air conditioning – climate control
- Cruise control
- Heated front seats
- Leather steering wheel with remote audio control
- Leather gearshift knob
- Hi-contrast meter dials with colour LCD MID
- Bluetooth hands-free telephone kit
- Radio/CD/MP3 player with 6 speakers
- Auto-light control
- Rain sensor

4WD model:

- On-demand 4WD with rotary drive mode selector

ASX 4

1.6 2WD Manual
1.8 DI-D 2WD Manual
1.8 DI-D 4WD Manual



Key features

Specification as ASX 3 plus:

- Leather seat trim
- Kenwood satellite navigation system
- Reversing camera
- iPod control

4WD model:

- On-demand 4WD with rotary drive mode selector



Technical Specifications

Model		ASX 2 1.6 2WD Manual	ASX 3/ASX 4 1.6 2WD Manual	ASX 3/ASX 4 1.8 DI-D 2WD Manual	ASX 3/ASX 4 1.8 DI-D 4WD Manual
Engine					
Engine type		1.6-litre in-line 4-cylinder 16-valve DOHC MIVEC petrol engine		1.8-litre in-line 4-cylinder 16-valve DOHC common-rail direct injection diesel engine, turbocharger/intercooler	
Displacement	cc	1590	1590	1798	1798
Bore/stroke	mm	75.0 x 90.0	75.0 x 90.0	83.0 x 83.1	83.0 x 83.1
Compression ratio		11.0	11.0	14.9	14.9
Max. output	kw (bhp) at rpm	86 (115)/6000	86 (115)/6000	85 (114)/3500	85 (114)/3500
Max. torque	Nm (lb.ft) at rpm	154 (114)/4000	154 (114)/4000	300 (221)/1750-2250	300 (221)/1750-2250
Performance/Fuel Consumption/Emissions					
Maximum speed	mph (kph)	113 (183)	113 (183)	117 (189)	115 (185)
Acceleration 0-62 mph	secs	11.4	11.4	10.2	10.6
Fuel type		Unleaded	Unleaded	Diesel	Diesel
Fuel consumption	Urban mode	7.8 (36.2)	7.8 (36.2)	6.3 (44.8)	6.4 (44.1)
	Extra urban mode	5.0 (56.5)	5.0 (56.5)	4.5 (62.8)	4.6 (61.4)
	Combined mode	6.0 (47.1)	6.0 (47.1)	5.2 (54.3)	5.2 (54.3)
CO ₂ emissions	g/km	139	139	136	138
Emissions compliance		EU-5	EU-5	EU-5	EU-5
Suspension/Steering					
Suspension	Front	MacPherson strut, coil springs with stabiliser bar		MacPherson strut, coil springs with stabiliser bar	
	Rear	Multi link, coil springs with stabiliser bar		Multi link, coil springs with stabiliser bar	
Brakes		Anti-lock Braking System with Electronic Brakeforce Distribution (ABS + EBD), Brake Assist (BA), Hill Start Assist (HSA) and Emergency Stop signal System (ESS)			
	Front	294mm (11.6") ventilated disc		294mm (11.6") ventilated disc	
	Rear	302mm (11.9") solid disc with internal drum handbrake		302mm (11.9") solid disc with internal drum handbrake	
Steering		Rack and pinion, electronic power-assisted		Rack and pinion, electronic power-assisted	
Min. turning circle	m (ft)	10.6 (34.8)	10.6 (34.8)	10.6 (34.8)	10.6 (34.8)
Tyres		215/65R16 98H	215/60R17 96H	215/60R17 96H	215/60R17 96H
Wheels		16" x 6.5J alloy	17" x 6.5J alloy	17" x 6.5J alloy	17" x 6.5J alloy
Driveline/Transmission		Front transverse engine. Mitsubishi Active Stability and Traction Control (M-ASTC)			
Type		2WD (Front)		2WD (Front)	
Driveline		2WD (Front)		On-demand 4WD with Lock mode, mode selector and electronic control coupling	
Clutch	Manual	Hydraulic	Hydraulic	Hydraulic	Hydraulic
Transmission	Manual	5 speed	5 speed	6 speed	6 speed
Gear ratios	1st	3.727	3.727	3.538	3.538
	2nd	1.947	1.947	1.913	1.913
	3rd	1.343	1.343	1.218	1.218
	4th	0.976	0.976	0.860	0.860
	5th	0.804	0.804	0.790	0.790
	6th	-	-	0.673	0.673
	Reverse	3.727	3.727	3.831	3.831
Final gear ratio		4.333	4.333	1st-4th: 4.058 5th-6th-Reverse: 3.450	1st-4th: 4.058 5th-6th-Reverse: 3.450
Dimensions					
Exterior l x w x h	mm	4295 x 1770 x 1615	4295 x 1770 x 1615	4295 x 1770 x 1615	4295 x 1770 x 1615
Exterior width over extended door mirrors	mm	2120	2120	2120	2120
Ground clearance (unladen)	mm	195	195	170	170
Track Front/Rear	mm	1525/1525	1525/1525	1525/1525	1525/1525
Wheelbase	mm	2670	2670	2670	2670
Weights/Volumes					
Seating capacity		5	5	5	5
Cargo capacity min.	lts VDA (cu.ft.)	442 (15.6)	442 (15.6)	442 (15.6)	442 (15.6)
	max.	1193 (42.1)	1193 (42.1)	1193 (42.1)	1193 (42.1)
Fuel tank capacity	lts (imp.galls)	63 (13.8)	63 (13.8)	63 (13.8)	60 (13.2)
Gross vehicle weight	kg (lbs)	1870 (4123)	1870 (4123)	2060 (4542)	2060 (4542)
Kerb weight	kg (lbs)	1270 (2799)	1285 (2833)	1450 (3197)	1515 (3340)
Towing capacity	Braked	1200 (2646)	1200 (2646)	1400 (3086)	1400 (3086)
	Unbraked	670 (1477)	670 (1477)	745 (1642)	745 (1642)
Trailer nose weight	kg (lbs)	60 (132)	60 (132)	70 (154)	70 (154)
Roof loading capacity	kg (lbs)	80 (176)	80 (176)	80 (176)	80 (176)
Servicing/Insurance/Warranty					
Service intervals		12,500 miles or 12 months, whichever occurs first		9,000 miles or 12 months, whichever occurs first	
Insurance group (50 Group Rating)		13	ASX 3: 13 / ASX 4: 14	19	ASX 3: 19 / ASX 4: 20
Warranty		3 year unlimited mileage warranty, 12 year anti-corrosion perforation warranty, 3 year pan-European roadside, home and accident assistance			

The fuel consumption figures quoted are those produced under Government regulations for the purpose of comparing new cars. They should not be regarded as a representation of achievable fuel consumption, which in practice will vary with load, road conditions, driving style and other factors.

Standard and Optional Equipment

Model	ASX 2 1.6 2WD	ASX 3 1.6 2WD 1.8 DI-D 2WD 1.8 DI-D 4WD	ASX 4 1.6 2WD 1.8 DI-D 2WD 1.8 DI-D 4WD
Security and Safety Features			
Security			
Alarm/keyless entry	■	■	■
Deadlocks	■	■	■
Locking wheel nuts	■	■	■
Luggage cover, rear	■	■	■
Visible VIN	■	■	■
Safety			
ABS with EBD	■	■	■
Airbag SRS, driver's and front passenger's	■	■	■
Airbag SRS, driver's knee protection	■	■	■
Airbag SRS, front seat sides x 2	■	■	■
Airbag SRS, curtain type, 1st and 2nd row	■	■	■
Airbag, front passenger deactivation switch	■	■	■
Brake Assist (BA)	■	■	■
Brake over-ride system	■	■	■
Child-proof rear door locks	■	■	■
Emergency Stop signal System (ESS)	■	■	■
Fog lamp, rear	■	■	■
High-mount stop lamp, rear	■	■	■
Hill Start Assist (HSA)	■	■	■
ISO-Fix child seat mountings	■	■	■
Mitsubishi Active Stability and Traction Control (M-ASTC)	■	■	■
Parking sensors, rear	–	■	■
Rear view camera	–	–	■
RISE (Reinforced Impact Safety Evolution) body safety system	■	■	■
Seatbelts, 3-point ELR x 2 with force limiters and pretensioners, front	■	■	■
Seatbelts, 3-point ELR x 3, rear	■	■	■
Seatbelt fastening warning lamp	■	■	■
Tether anchor x 2	■	■	■
Exterior Features			
Functional			
Central door locking	■	■	■
Door mirrors, electric heated with folding function	■	■	■
Fog lamps, front with chrome bezels	–	■	■
Follow-me-home headlamp function	■	■	■
Headlamps, automatic light sensor	–	■	■
Headlamps, halogen	■	■	■
Tyre inflation kit	■	■	■
Wipers, automatic rain sensor	–	■	■
Wipers, variable intermittent with washer, front	■	■	■
Wiper, intermittent with washer, rear	■	■	■
Window demister with timer, rear	■	■	■
Styling			
16" alloy wheels	■	–	–
17" alloy wheels	–	■	■
Belt line moulding, chrome	–	■	■
Door handles, colour-keyed	■	■	■
Door mirrors, colour-keyed	■	■	■
Exhaust finisher, chrome	–	■	■
Front grille, black	■	–	–
Front grille, black with chrome surround	–	■	■
Lower front and rear bumpers and side sills, black	■	■	■
Metallic or pearlescent paint finish	□	□	□
Privacy glass, rear side windows and tailgate window	–	■	■
Roof spoiler, colour-keyed	■	■	■
Interior Features			
Audio/Navigation/Communications			
Aerial, rear roof mounted	■	■	■
Bluetooth hands-free telephone connection	–	■	■
iPod compatibility	–	■	■
Kenwood integrated satellite navigation system	–	–	■
MP3 aux input port	■	–	–
Stereo radio/CD with MP3 compatibility and 4 speakers	■	–	–
Stereo radio/CD with MP3 compatibility and 6 speakers	–	■	■
USB port	–	■	–

■ : Standard □ : Option at additional cost – : Not available

Model	ASX 2 1.6 2WD	ASX 3 1.6 2WD 1.8 DI-D 2WD 1.8 DI-D 4WD	ASX 4 1.6 2WD 1.8 DI-D 2WD 1.8 DI-D 4WD
Interior Features continued			
Styling			
Dashboard centre panel, dark titanium finish	–	■	–
Door armrests, front and rear, fabric	■	■	–
Door armrests, front and rear, leather	–	–	■
Gear knob, leather-wrapped, black	–	■	■
Instrument meter trim, chrome	–	■	■
Interior door handles, chrome	–	■	■
Seat trim, fabric, with PVC front centre armrest	■	–	–
Seat trim, high-grade fabric, with fabric front centre armrest	–	■	–
Seat trim and front centre armrest, leather, black	–	–	■
Steering wheel, urethane	■	–	–
Steering wheel, leather-wrapped, black	–	■	■
Convenience			
Air conditioning, manual with air filter	■	–	–
Air conditioning, climate control with chrome dial rings and air filter	–	■	■
Backrest pocket, driver's seat	–	–	■
Backrest pocket, front passenger's seat	–	■	■
Bottle holder, front doors	■	■	■
Cargo tie-down hooks	■	■	■
Coat hanger	■	■	■
Console box, floor	■	■	■
Cruise control	–	■	■
Cup holders, front, in floor console	■	■	■
Cup holders, rear, in centre armrest	–	■	■
Door pockets, front	■	■	■
Footrest, driver's	■	■	■
Glove box, illuminated	■	■	■
Ignition keyhole, illuminated	■	–	–
Lights-on warning buzzer	■	■	■
Luggage area underfloor compartment	■	■	■
Luggage cover, rear	■	■	■
Retractable assist grips, x 4	■	■	■
Rear seat heater ducts	■	■	■
Steering column tilt & telescopic adjustment	■	■	■
Steering wheel audio controls	–	■	■
Sunvisors x 2	■	■	■
Functional			
4WD mode selector with chrome ring, floor console	–	4WD model	4WD model
Accessory socket, front	■	■	■
Accessory socket, inside floor console box	■	■	■
Electric windows, front and rear	■	■	■
Engine start/stop button	–	■	■
Headlamp levelling	■	■	■
Instrument panel light dimmer	■	■	■
Keyless operation system	–	■	■
Multi information display	■	–	–
Multi information colour LCD display with high-contrast meters	–	■	■
Shift timing indicator	■	■	■
Lighting			
Interior lamp, front	■	■	■
Interior lamp, rear	–	■	■
Luggage area lamp	■	■	■
Map reading lamps, front	■	■	■
Seats			
Armrest, front – centre with sliding adjustment	–	■	■
Armrest, rear – centre with built-in cup holders and 'load-through' hatch	–	■	■
Driver's seat height adjustment	■	■	■
Front seat heaters	–	■	■
Front seats, slide and recline adjustment	■	■	■
Head restraints, height adjustable, front x 2	■	■	■
Head restraints, height adjustable, rear x 3	■	■	■
Rear seat backrest adjustment – 2 positions	■	■	■
Rear seats with 60/40 split-folding backrests	■	■	■

Colour Options and Seat Trims



Cool Silver (M)



Orient Red (M)



Amethyst Black (P)



Frost White (S)



Kingfisher Blue (M)



Atlantic Grey (M)

Model		ASX 2	ASX 3	ASX 4
Exterior colour				
Cool Silver (M)	A31	■	■	■
Orient Red (M)	P26	■	■	■
Amethyst Black (P)	X42	■	■	■
Frost White (S)	W37	■	■	■
Kingfisher Blue (M)	D17	■	■	■
Atlantic Grey (M)	U17	■	■	■
Seats		Emboss Fabric/Knit (Black)	High-Grade Emboss Fabric/Cross Knit (Black)	Leather (Black)
Door trim		Fabric Inserts (Black)	Fabric Inserts (Black)	Leather Inserts (Black)
Headlining		Non-woven Fabric (Grey)	Non-woven Fabric (Grey)	Non-woven Fabric (Grey)
Floor carpet		Needle Punch (Black)	Needle Punch (Black)	Needle Punch (Black)

■ : Available M: Metallic* P: Pearlescent* S: Solid

*Metallic/pearlescent paint finish available at additional cost.

Colours and trims reproduced on these pages may vary from the actual colours due to the limitations of the printing process used.



Black Emboss Fabric/Knit (ASX 2)



Black High-Grade Emboss Fabric/Cross Knit (ASX 3)



Black Leather (ASX 4)

Accessorise your ASX

Based on Mitsubishi's Concept-cX show car the ASX is a stunning looking crossover and you can keep it in showroom-perfect condition with the special Protection Pack, comprising of a mat set, mud flaps, boot liner and protection plates for those areas which suffer the most. Overleaf you will find further approved accessories to make the ASX an even more perfect fit for your lifestyle, all of which benefit from the same excellent warranty as the vehicle itself if fitted when new. So before you place your order, consider carefully: talk to your dealer or visit the ASX accessories website on www.mitsubishi-cars.co.uk/ASX and make sure you make the most of your choice.



1. Front mudflaps
2. Rear mudflaps
3. Front door entry guards
4. Boot tray
5. Rear bumper top protection plate
6. Front textile mat set, Classic (fitted)
7. Full textile mat set, Classic



- 8. Chrome exhaust finisher (ASX 2)
- 9. Rear door entry guards
- 10. Front wind deflectors
- 11. Front fog lamps with chrome bezel (ASX 2)
- 12. Rear dog guard
- 13. Tow bar, detachable
- 14. Tow bar (detached – socket can be rotated to hide) Fixed type also available





- 15. Leather/alloy shift knob and leather/alloy handbrake lever
- 16. Roof carrier (cross rails)
- 17. Luggage carrier
- 18. Drop-down DVD system
- 19. Space-saver spare wheel/tyre



To find out about our special offers scan here



To see the ASX in action scan here

MITSUBISHI MOTORS RECYCLING

We all have a duty to protect the environment. After a long working life we will take back any Mitsubishi Motors vehicle originally sold by The Colt Car Company Ltd. and recycle it in an environmentally friendly manner in accordance with the EU Directive on End-of-Life Vehicles and any applicable national statutory provisions.

All Mitsubishi Motors vehicles sold by The Colt Car Company Ltd., irrespective of date of sale, will be taken back free of charge from the last owner, at one of the designated take-back points, provided the vehicle contains all major components and is free of waste.

For further information please visit www.cartakeback.com, email info@cartakeback.com or call the Cartakeback info-line on 0845 257 32 33.

The specification of the vehicles illustrated in this publication may not be applicable to the UK market, furthermore some vehicle illustrations may include accessory items which are not part of UK standard specification. However, every effort has been made to ensure that the written information was accurate, up-to-date and consistent with UK specification at the time of going to press. The right is reserved to change specification, features and prices without prior notice. To avoid any misunderstandings, your Mitsubishi Motors dealer will advise of any alterations made since the date of issue of this brochure. No part of this publication may be reproduced in any form or by any means, without the prior written permission of The Colt Car Company Limited.

Head Office: The Colt Car Company Ltd., Watermoor, Cirencester, Glos. GL7 1LF

Website: www.mitsubishi-cars.co.uk



This brochure has been produced by an ISO14001 environmentally accredited printer where all processes are managed and materials recycled. The paper used to produce this brochure is from sustainable forests, chlorine free and from an ISO14001 accredited mill. This brochure is fully recyclable.