

**COLT**



# A clearer, cleaner way forward

At Mitsubishi Motors we've transformed the way we think. Our goal is to become a world leader in the reduction of CO<sub>2</sub> emissions on a global scale. That's why all our vehicles now have a smaller carbon footprint, be it through Auto Stop & Go technology, fuel efficient tyres, aerodynamics, cleaner engines, components made from recycled parts or the use of plant-based resins instead of plastics. The Colt, in the shape of the Colt ClearTec, combines most of these technologies to become one of the cleanest and most fuel-efficient petrol cars in its segment. Mitsubishi have also released the first electric vehicle to the UK market and are currently developing new plug-in hybrid and flexible fuel vehicles. Some of our vehicles are already more than 95% recyclable.

But at Mitsubishi Motors it's not just our cars that are greener. In our offices we're saving waste, power, packaging and becoming paper-free. And our manufacturing process is cleaner too – we employ sheep to keep the grass short; we've planted hundreds of thousands of trees and eliminated environmentally hazardous substances; our factories are switching to water-based paint and working towards zero landfill waste. And with high-efficiency automation, we're doing much of this with the lights turned off. Our philosophy is one of continual evolution and improvement. **We call this Intelligent Motion.**

INTELLIGENT  MOTION





## The small car with big ideas

You want a small car. You want something nimble to nip around congested city streets and dodge in and out of tight spots. You want a car which will bring a smile to your face and a lift to your heart. But you need a car which is comfortable and practical, affordable and insurable. A car to ferry the kids to the park and the dog to the kennels. A car which will carry family and friends long distances in comfort. In fact, what you really want is a big car in a small car's body. What you really need is a Colt.

A Colt is the ultimate compact car for grown-ups. It comes in three- and five-door variants with a choice of engines, including the energy efficient and eco-friendly Colt ClearTec and the ultra-hot

hatchling Colt Ralliart. The Colt is stylish, distinctive, a little out of the ordinary, with a dynamic stance and Mitsubishi's signature 'jet fighter' grille. It drives as well as it looks: sprightly and manoeuvrable with a fairly firm, front-wheel drive chassis and well-tuned suspension, a wheel-at-each-corner physique, accurate, nicely weighted steering and light, foolproof gearchange. It's well built, with doors which close with a satisfyingly solid thud, and amazingly well endowed with equipment making it exceptional value for your hard-earned cash. But, perhaps most importantly, it's a Mitsubishi, which means that it will carry on being all these things, day in, day out, for many, many years to come.







# Drive just for the fun of it

Three doors or five the Colt is a nifty little thing, with a choice of petrol engines designed specifically for it. First up, the baby of the bunch, is a feisty, three-cylinder, 1.1 litre unit which rewards your efforts with excellent throttle response and a lively buzz through the gears: the figures – 0-62mph in around 13 seconds and a top speed of 103mph – are rather more modest than it actually feels.

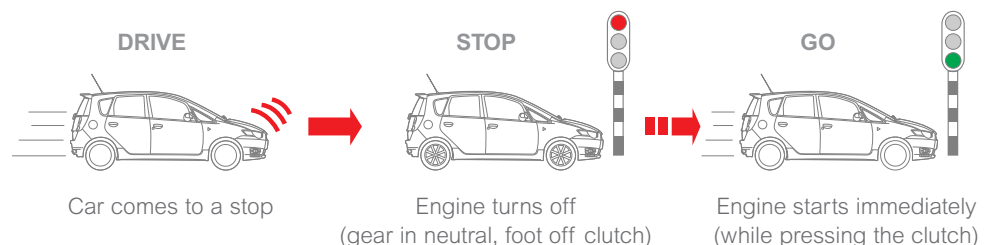
Good though the baby engine is, if most of your driving is done three- or four-up, you may prefer the extra power of the 1.3 litre, four-cylinder engine. Variable valve timing boosts torque at low speeds and increases power at higher ones, resulting in impressive performance figures combined with fuel-sipping economy; and this whether you opt for the slick five-speed manual or Mitsubishi's six-speed Allshift system – an automated manual which offers the best of all worlds: a fully automatic mode as well as a sequential manual shift.

If economy and emissions are your priority the 1.3 litre Colt ClearTec provides the ideal solution. A combination of technologies including an intelligent stop/start system, low rolling resistance tyres, optimised gear ratios and a more efficient alternator – this recharges the battery whilst braking or decelerating – together result in a combined mode fuel consumption in excess of 55 mpg and emissions of only 119g/km. Not only does this mean less money spent on fuel but you give less to the government too – just £30 per year for road tax at current rates; and you can relax in the knowledge that you are doing your bit for the environment as well.

Of course, if what you really, really want is a hot hatchling then outright performance will be your ultimate goal. For this you need look no further than the 1.5 litre Colt Ralliart: read more about it on page 16.

## Auto Stop and Go (AS&G)

The Auto Stop and Go system enables the engine to stop automatically when the car is stationary, the gearshift is in neutral and the driver's foot is off the clutch pedal – at traffic lights or in congestion, for example. The car restarts automatically when the driver presses the clutch again to engage a gear.





**COLT**





## A lesson in space craft

The Colt was designed from the inside out, which explains how Mitsubishi managed to fit such a spacious interior into a car with such compact dimensions. Up front there's enough shoulder-, leg- and head-room to keep the tallest adults happy on a long run, whilst a long wheelbase, wide track and some clever design ideas ensure ample space for comfort if similarly generously-proportioned persons travel in the rear. The huge, steeply raked windscreen keeps the interior bright and the car is full of the sort of intelligent storage spaces, neat design features and generous equipment levels more normally associated with vehicles with a much larger price tag.



Steering wheel mounted cruise and stereo controls (not CZ1) allow you to keep your eyes on the road and hands on the wheel at all times, whilst an input connection for your external MP3-player means that you can always access your favourite music.



**COLT**



## Safety First and Foremost

Stylish, spacious and practical, the Colt looks after you in every respect. All that glass ensures excellent all-round visibility. Those sporty new front bumpers and headlamps, inspired by the Lancer Evolution, don't just look good, they also improve pedestrian safety courtesy of energy-absorbing materials and a clever design for better crumple zones. That good-looking body is built around the next generation Reinforced Impact Safety Evolution (RISE) design which disperses energy loads during side and rear impacts and controls distortion, enhancing occupant protection and also helping to protect the fuel system during a rear impact. There are SRS airbags, of course, height adjustable head restraints to all five seats – vital to protect the neck, and proper three-point safety belts, with ISO-Fix points in the rear for fitting child car seats safely.

It almost goes without saying that all Colt models are fitted with ABS with EBD (Electronic Brakeforce Distribution) which automatically adjusts the braking effort to individual wheels to accommodate the location of weight. Also standard are two clever aids for emergency braking situations: Brake Assist which provides power assistance to boost the braking effort and ESS (the Emergency Stop signal System) which automatically activates the hazard lights at double speed to make others around you aware.



The 60:40 split folding rear seats ensure the flexibility to carry extra people or parcels at will, whilst a moveable cargo room floor (selected models only) provides the option of a hiding pace for valuables or an even bigger boot.



With the rear seats folded the resulting massive cargo space has a completely flat floor, making carrying large items easy.



## Living with a Colt long term

In these days of oppressive motoring costs the Colt brings welcome relief. It's practical yet fun, fast yet frugal. It is excellent value for money, stylish and economical to run, tax and insure. Servicing by the experts, using genuine parts and Mitsubishi diagnostic equipment, won't break the bank because you can purchase a Mitsubishi Service Plan, covering the first three scheduled services, for a modest sum when you buy your car. Furthermore, the cost of the Plan can be included in your vehicle's finance and transferred to the new owner when you sell. The Colt also comes with a comprehensive, three-year, unlimited mileage warranty, which includes the Mitsubishi Assistance Package (MAP):

breakdown, accident, theft, vandalism – whatever the reason you need to call for home or roadside assistance you're covered 24/7 in over 30 countries throughout Europe.

Mitsubishi Motors also offer superior insurance cover for your Colt which is specifically designed for Mitsubishi vehicles and uses only genuine parts and approved repair centres. And to smooth your progress through an insurance claim, no matter which insurer you use, Mitsubishi First, our accident aftercare programme, handles everything on your behalf – no hassle, no claim forms, no running about and absolutely no cost to you. It's simply part of the special service you get when you buy a Colt from Mitsubishi.





## A Colt with sporting pedigree

Tiny, fast, fun and around half the price of more high profile hot hatches – the Colt Ralliart is first both off the mark and over the line in the race of the hot hatchlings. The 1.5 litre turbo motor dishes out 147 bhp and 155 lb.ft. of torque at 3500 rpm. That translates to a 0-62 mph sprint in little more than seven seconds, with plenty of vigour in the mid-range and enough outright power to see it strongly through to the redline. Mitsubishi have decades of expertise in building high performance, turbocharged cars and the Lancer Evolution is one of the best recognised performance cars on British roads. Whilst the Colt Ralliart may not share its all-wheel drive hardware, it has certainly inherited its attitude.



#### **The darker face of Colt**

Sideskirts, a rear spoiler and unique dark grey 16-inch alloys on the Ralliart emphasise the glower of the 'jet fighter' inspired grille and take the cute out of the Colt.



## The small car blast

Wider tyres, a stiffer chassis with additional bracing under the bonnet, in the doorframes and for the transmission tunnel, and a sports suspension with new spring rates, shock absorbers, revised mountings, bump stops and anti-rollbars all add up to handling which is a B-road blast. If things do get a little out of hand the standard fit M-ASTC stability control steps in with finely judged, silky-smooth interventions, enhancing your fun not interfering with it. Whether you opt for three doors or five, the Colt Ralliart really is what driving a small car is all about.



### Form reflects function

Inside the Colt Ralliart it's all about the chase and no excess weight, just truly supportive sports seats, aluminium pedals for better grip and high visibility instrument dials.

# Colt CZ1

3-door



## Key features

- 1.1-litre petrol engine
- Central door locking with keyless entry
- Electric front windows
- ABS with EBD
- Dual front airbags
- Radio/CD player with 4 speakers and iPod/MP3 AUX port
- Height-adjustable driver's seat
- Tilt-adjustable steering wheel
- Multi-info display
- Split-folding rear seats



# Colt CZ2

3-door



## Key features

### Specification as Colt CZ1 plus:

- 1.3-litre petrol engine
- 16" alloy wheels
- Exterior colour-key package
- Front fog lamps
- Air conditioning
- Electric heated door mirrors
- Cruise control
- Black leather steering wheel with audio and cruise remote controls



# Colt CZ1

5-door



## Key features

- 1.1-litre petrol engine
- Central door locking with keyless entry
- Electric front windows
- ABS with EBD
- Dual front airbags
- Radio/CD player with 4 speakers and iPod/MP3 AUX port
- Height-adjustable driver's seat
- Tilt-adjustable steering wheel
- Multi-info display
- Split-folding rear seats



# Colt CZ2

5-door



## Key features

### Specification as Colt CZ1 plus:

- 1.3-litre petrol engine
- 16" alloy wheels
- Exterior colour-key package
- Front fog lamps
- Tailgate privacy glass
- 2-level luggage area floor
- Air conditioning
- Electric rear windows
- Electric heated door mirrors
- Cruise control
- Black leather steering wheel with audio and cruise remote controls



# Colt CZ2 ClearTec

5-door



## Key features

### Specification as Colt CZ2 plus:

- Economy-optimised 1.3-litre petrol engine and final gear ratio
- Auto Stop & Go (AS&G)
- High-efficiency alternator with Electricity Generation Control
- Low rolling resistance tyres
- 15" alloy wheels (in lieu of 16")



# Colt Ralliart

3-door



## Key features

### Specification as Colt CZ2 3-door plus:

- 1.5-litre petrol engine with turbocharger and intercooler
- 16" alloy wheels with dark grey finish
- Rear spoiler
- Side sill extensions
- Mitsubishi Active Stability and Traction Control
- Front seat side and curtain airbags
- Sports front seats
- Radio/CD player with 6 speakers and iPod/MP3 AUX port



# Colt Ralliart

5-door



## Key features

### Specification as Colt CZ2 5-door plus:

- 1.5-litre petrol engine with turbocharger and intercooler
- 16" alloy wheels with dark grey finish
- Rear spoiler
- Side sill extensions
- Privacy glass
- Mitsubishi Active Stability and Traction Control
- Front seat side and curtain airbags
- Sports front seats
- Radio/CD player with 6 speakers and iPod/MP3 AUX port
- LESS Electric rear windows



# Thoroughbred equipment

The Colt may be small in stature but its presence is huge, especially if you make use of the exterior and interior options. On these pages you will find a range of approved accessories to make it an even more perfect fit for your lifestyle, all of which benefit from the same excellent warranty as the vehicle itself if fitted when new. So before you place your order, consider carefully: talk to your dealer or visit [www.mitsubishi-cars.co.uk/colt](http://www.mitsubishi-cars.co.uk/colt) and make sure you make the most of your choice.



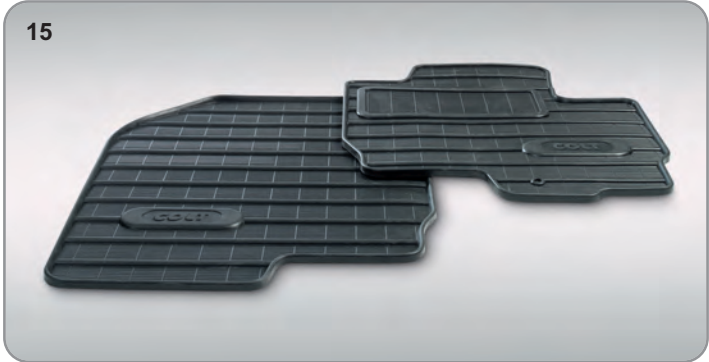
1. Portable satellite navigation system
2. Silver-coloured decoration for air vents
3. Centre console accent parts
4. Front seat storage tray
5. Arm rest, lower part fibre-coated, top lid trimmed in black leather
6. Alloy sports pedals (standard for Colt Ralliart models)





- 7. Side window deflectors
- 8. Rear spoiler (5-door)
- 9. Rear spoiler (3-door)
- 10. Rear parking assistance, 4-sensor\*  
(supplied unpainted black, can be painted in body colour), tailgate garnish and rear bumper protection foil
- 11. Silver-coloured front fog lamp surrounds
- 12. Chromed mirror covers
- 13. Side protection moulding
- 14. Exhaust finisher (1.3 manual models)





- 15. Rubber mat set
- 16. Space saver spare wheel kit
- 17. Tow bar, detachable type
- 18. Roof carrier
- 19. Front door entry guards, adhesive foil
- 20. Front door entry guards, brushed aluminium\*
- 21. Textile mat sets\*
- 22. Mud flaps\* (front and rear available)



\*Available in the Colt Protection Pack at a special price, please ask your dealer for details. (NB Rear parking assistance will be a 2-sensor system.)



## Colour Options and Seat Trims



Lunar Silver (M)



Spicy Red (S)



Graphite Blue (M)



Atlantis Blue (P)



Smoked Grey (M)



Porcelain White (S)



Sparkling Black (M)

Model		Colt CZ1	Colt 3-Door / 5-Door Colt CZ2 / ClearTec	Ralliart
<b>Exterior colour</b>				
Lunar Silver (M)	A50	■	■	–
Spicy Red (S)	P04	■	■	■
Graphite Blue (M)	D09	■	■	–
Atlantis Blue (P)	T96	■	■	–
Smoked Grey (M)	U05	■	■	–
Porcelain White (S)	W16	■	■	■
Sparkling Black (M)	X62	■	■	■
<b>Seats</b>		Fabric (Black)	Fabric (Black/Grey)	Ralliart Fabric with Leather-look Bolsters (Black/Silver)
<b>Door trim</b>		Formed-type with Grained Insert (Black)		
<b>Headlining</b>		Non-woven Fabric (Grey)	Non-woven Fabric (Grey)	Non-woven Fabric (Grey)
<b>Floor carpet</b>		Needle Punch (Black)	Needle Punch (Black)	Needle Punch (Black)

■ : Available – :Not available M: Metallic\* P: Pearlescent\* S: Solid

\*Metallic/pearlescent paint finish available at additional cost.

Colours and trims reproduced on these pages may vary from the actual colours due to the limitations of the printing process used.



Black Fabric  
(CZ1)



Black/Grey Fabric  
(CZ2/ClearTec)



Black/Silver Fabric/Leather-look  
(Ralliart)

# Technical Specifications

		<b>Colt CZ1 3-Door 1.1 Manual</b>	<b>Colt CZ2 3-Door 1.3 Manual/AMT</b>	<b>Colt CZ1 5-Door 1.1 Manual</b>
<b>Engine</b>				
Engine type		3-cylinder 12-valve DOHC	4-cylinder 16-valve MIVEC DOHC	3-cylinder 12-valve DOHC
Fuel system		Electronically controlled multi-point fuel injection (ECI-MULTI)		
Displacement	cc	1124	1332	1124
Bore/stroke	mm	75.0 x 84.8	75.0 x 75.4	75.0 x 84.8
Max. output	kW (bhp) at rpm	55 (74)/6000	70 (94)/6000	55 (74)/6000
Max. torque	Nm (lb.ft) at rpm	100 (74)/4000	125 (92)/4000	100 (74)/4000
<b>Performance/Fuel Consumption/Emissions</b>				
Maximum speed	mph (kph)	103 (165)	112 (180)	103 (165)
Acceleration 0-62 mph	secs	12.9	11.0 [11.8]	13.3
Fuel type		Unleaded	Unleaded	Unleaded
Fuel consumption	Urban mode	6.8 (41.5)	7.2 (39.2) [7.0 (40.4)]	6.8 (41.5)
lts/100km (mpg)	Extra urban mode	4.6 (61.4)	4.7 (60.1) [4.6 (61.4)]	4.6 (61.4)
	Combined mode	5.4 (52.3)	5.6 (50.4) [5.5 (51.4)]	5.4 (52.3)
CO <sub>2</sub> emissions	g/km	125	130 [127]	125
<b>Suspension/Steering</b>				
Front axle		MacPherson strut, coil springs with stabilizer bar		
Rear axle		Torsion beam with stabilizer bar	Torsion beam with stabilizer bar	Torsion beam with stabilizer bar
Brakes		Anti-lock Braking System with Electronic Brakeforce Distribution (ABS with EBD), Brake Assist (BA) and Emergency Stop signal System (ESS)		
	Front	10.1" ventilated discs	10.1" ventilated discs	10.1" ventilated discs
	Rear	8" drums	8" drums	8" drums
Steering		Rack & Pinion (Electrical power assisted)		
Min. turning circle (wall to wall)	m (ft)	10.8 (35.4)	10.8 (35.4)	10.8 (35.4)
Tyres		175/65R14 82T	205/45R16 83H	175/65R14 82T
Wheels		14" x 5.5J Steel	16" x 6.5J Alloy	14" x 5.5J Steel
<b>Driveline/Transmission</b>				
Type		Front transverse engine/Front wheel drive		
Clutch	Manual/Allshift AMT <sup>2</sup>	Hydraulic – dry single disc	Hydraulic – dry single disc	Hydraulic – dry single disc
Transmission	Manual	5-speed	5-speed	5-speed
	Allshift AMT <sup>2</sup>	–	6-speed	–
Gear ratios	1st	3.31	3.31 [3.07]	3.31
	2nd	1.91	1.91	1.91
	3rd	1.26	1.26	1.26
	4th	0.94	0.94	0.94
	5th	0.76	0.76	0.76
	6th	–	– [0.64]	–
	Reverse	3.23	3.23	3.23
Final gear ratio		4.16	3.84 [4.53]	4.16
<b>Dimensions</b>				
Exterior l x w x h	mm	3880 x 1695 x 1520	3880 x 1695 x 1520	3940 x 1695 x 1550
Exterior width over extended door mirrors	mm	2015	2015	2015
Ground clearance (unladen)	mm	154	154	154
Track Front	mm	1460	1460	1460
Rear	mm	1445	1445	1445
Wheelbase	mm	2500	2500	2500
<b>Weights/Volumes</b>				
Seating capacity		5	5	5
Cargo capacity min.	lts VDA (cu.ft.)	160 (5.6)	160 (5.6)	186 (6.6)
Cargo capacity max.	lts VDA (cu.ft.)	568 (20.0)	568 (20.0)	609 (21.5)
Fuel tank capacity	lts (imp.galls)	47 (10.3)	47 (10.3)	47 (10.3)
Gross vehicle weight	kg (lbs)	1420 (3131)	1430 (3153) [1435 (3164)]	1450 (3197)
Kerb weight	kg (lbs)	935 (2061)	940 (2073) [945 (2084)]	965 (2128)
Towing capacity Braked	kg (lbs)	750 (1654)	750 (1654)	750 (1654)
Unbraked	kg (lbs)	500 (1103)	500 (1103)	500 (1103)
Trailer nose weight	kg (lbs)	50 (110)	50 (110)	50 (110)
Roof loading capacity	kg (lbs)	50 (110)	50 (110)	50 (110)
<b>Servicing/Insurance/Warranty</b>				
Service intervals		Every 12,500 miles or 12 months, whichever occurs first		
Insurance group		11E	15E	11E
Warranty		3 year unlimited mileage warranty, 12 year anti-perforation warranty, 3 year pan-European roadside, home and accident assistance		

The fuel consumption figures quoted are those produced under Government regulations for the purpose of comparing new cars.

They should not be regarded as a representation of achievable fuel consumption, which in practice will vary with load, road conditions, driving style and other factors.

<sup>1</sup>M-ASTC : Mitsubishi Active Stability and Traction Control <sup>2</sup>Allshift AMT : Automated Manual Transmission [ ] Figures apply to Allshift AMT

<b>Colt CZ2 5-Door 1.3 Manual ClearTec</b>	<b>Colt CZ2 5-Door 1.3 Manual/AMT</b>	<b>Colt Ralliart 3-Door 1.5 Turbo Manual</b>	<b>Colt Ralliart 5-Door 1.5 Turbo Manual</b>
4-cylinder 16-valve MIVEC DOHC with Auto Stop & Go	4-cylinder 16-valve MIVEC DOHC	4-cylinder 16-valve MIVEC DOHC, with turbocharger and intercooler	4-cylinder 16-valve MIVEC DOHC, with turbocharger and intercooler
Electronically controlled multi-point fuel injection (ECI-MULTI)			
1332	1332	1468	1468
75.0 x 75.4	75.0 x 75.4	75.5 x 82.0	75.5 x 82.0
70 (94)/6000	70 (94)/6000	110 (147)/6000	110 (147)/6000
125 (92)/4000	125 (92)/4000	210 (155)/3500	210 (155)/3500
112 (180)	112 (180)	131 (210)	131 (210)
10.6	11.1 [12.0]	7.4	7.6
Unleaded	Unleaded	Unleaded	Unleaded
6.4 (44.1)	7.2 (39.2) [7.0 (40.4)]	8.5 (33.2)	8.5 (33.2)
4.4 (64.2)	4.7 (60.1) [4.6 (61.4)]	5.5 (51.4)	5.5 (51.4)
5.1 (55.4)	5.6 (50.4) [5.5 (51.4)]	6.6 (42.8)	6.6 (42.8)
119	130 [127]	153	153
MacPherson strut, coil springs with stabilizer bar			
Torsion beam with stabilizer bar	Torsion beam with stabilizer bar	Torsion beam with stabilizer bar	Torsion beam with stabilizer bar
Anti-lock Braking System with Electronic Brakeforce Distribution (ABS with EBD), Brake Assist (BA) and Emergency Stop signal System (ESS)			
10.1" ventilated discs	10.1" ventilated discs	11" ventilated discs	11" ventilated discs
8" drums	8" drums	9.8" discs	9.8" discs
Rack & Pinion (Electrical power assisted)			
10.8 (35.4)	10.8 (35.4)	10.8 (35.4)	10.8 (35.4)
185/55R15 82H (LRR)	205/45R16 83H	205/45R16 83V	205/45R16 83V
15" x 6.0J Alloy	16" x 6.5J Alloy	16" x 6.5J Alloy	16" x 6.5J Alloy
Front transverse engine/Front wheel drive		Front transverse engine/Front wheel drive with M-ASTC <sup>1</sup>	
Hydraulic – dry single disc	Hydraulic – dry single disc	Hydraulic – dry single disc	Hydraulic – dry single disc
5-speed	5-speed	5-speed	5-speed
–	6-speed	–	–
3.31	3.31 [3.07]	3.54	3.54
1.91	1.91	1.91	1.91
1.26	1.26	1.34	1.34
0.94	0.94	1.03	1.03
0.76	0.76	0.83	0.83
–	– [0.64]	–	–
3.23	3.23	3.36	3.36
3.84	3.84 [4.53]	3.74	3.74
3940 x 1695 x 1550	3940 x 1695 x 1550	3880 x 1695 x 1520	3940 x 1695 x 1550
2015	2015	2015	2015
154	154	154	154
1460	1460	1460	1460
1445	1445	1445	1445
2500	2500	2500	2500
5	5	5	5
186 (6.6)	186 (6.6)	160 (5.6)	186 (6.6)
609 (21.5)	609 (21.5)	568 (20.0)	609 (21.5)
47 (10.3)	47 (10.3)	47 (10.3)	47 (10.3)
1465 (3230)	1460 (3219) [1465 (3230)]	1520 (3352)	1550 (3417)
975 (2150)	970 (2139) [975 (2150)]	1060 (2337)	1090 (2403)
1000 (2205)	1000 (2205)	750 (1654)	1000 (2205)
500 (1103)	500 (1103)	500 (1103)	500 (1103)
50 (110)	50 (110)	50 (110)	50 (110)
50 (110)	50 (110)	50 (110)	50 (110)
Every 12,500 miles or 12 months, whichever occurs first			
15E	15E	28E	28E
3 year unlimited mileage warranty, 12 year anti-perforation warranty, 3 year pan-European roadside, home and accident assistance			

# Standard and Optional Equipment

Model	Colt CZ1 3-Door 1.1 Manual	Colt CZ2 3-Door 1.3 Manual/AMT	Colt Ralliart 3-Door 1.5 Turbo Manual	Colt CZ1 5-Door 1.1 Manual	Colt CZ2 5-Door 1.3 Manual/AMT ClearTec	Colt Ralliart 5-Door 1.5 Turbo Manual
<b>Security and Safety Features</b>						
<b>Security</b>						
Alarm	DFO	DFO	■	DFO	DFO	■
Deadlocks	■	■	■	■	■	■
Immobiliser, engine	■	■	■	■	■	■
Keyless entry	■	■	■	■	■	■
Locking wheel nuts	–	■	■	–	■	■
Visible VIN	■	■	■	■	■	■
<b>Safety</b>						
ABS with EBD	■	■	■	■	■	■
Airbag SRS, driver's and front passenger's	■	■	■	■	■	■
Airbag SRS, front passenger deactivation switch	■	■	■	■	■	■
Airbag SRS, front seat side and curtain	–	–	■	–	–	■
Child proof rear door locks	–	–	–	■	■	■
Emergency Stop signal System (ESS)	■	■	■	■	■	■
Fog lamp, rear	■	■	■	■	■	■
Head restraints, height adjustable, front	■	■	■	■	■	■
Head restraints x 3, height-adjustable, rear	■	■	■	■	■	■
High-mount stop lamp, rear	■	■	■	■	■	■
ISO-Fix child seat mountings, 2nd row	■	■	■	■	■	■
Mitsubishi Active Stability and Traction Control (M-ASTC)	–	–	■	–	–	■
Seatbelts, front – ELR with pretensioners and force limiters	■	■	■	■	■	■
Seatbelts, rear – ELR/ALR x 2, centre ELR x 1	■	■	■	■	■	■
Seatbelt fastening warning lamp	■	■	■	■	■	■
Side impact door bars	■	■	■	■	■	■
<b>Exterior Features</b>						
<b>Styling</b>						
14" steel wheels with full wheel covers	■	–	–	■	–	–
15" alloy wheels, 8-spoke	–	–	–	–	ClearTec	–
16" alloy wheels, split 5-spoke	–	■	–	–	■	–
16" alloy wheels, split 5-spoke, dark grey	–	–	■	–	–	■
Door entry guards with 'Ralliart' mark	–	–	■	–	–	■
Door and tailgate handles, black	■	–	–	■	–	–
Door and tailgate handles, colour keyed	–	■	■	–	■	■
Door mirrors, black unpainted	■	–	–	■	–	–
Door mirrors, part colour keyed	–	■	■	–	■	■
Front grille, black with colour-keyed central bumper	■	■	–	■	■	–
Front grille (including central bumper), black	–	–	■	–	–	■
Metallic or pearlescent paint finish	□	□	□	□	□	□
Privacy glass, tailgate window	–	–	–	–	■	–
Privacy glass, rear side and tailgate window	–	–	–	–	–	■
Rear spoiler	–	–	■	–	–	■
Side sill extensions, colour-keyed	–	–	■	–	–	■
<b>Functional</b>						
Central door locking including tailgate	■	■	■	■	■	■
Door mirrors, internally adjustable	■	–	–	■	–	–
Door mirrors, electrically adjustable and heated	–	■	■	–	■	■
Fog lamps, projector type, front	–	■	■	–	■	■
Headlamp delay function	■	■	■	■	■	■
Headlamps, halogen with clear outer lenses	■	■	■	■	■	■
Parking sensors, front	DFO	DFO	DFO	DFO	DFO	DFO
Parking sensors, rear	DFO	DFO	DFO	DFO	DFO	DFO
Towing hook, front	■	■	■	■	■	■
Tyre repair kit	■	■	■	■	■	■
Wipers, variable intermittent with washer, front	■	■	■	■	■	■
Wiper, intermittent with washer, rear	■	■	■	■	■	■
Window demister with timer, rear	■	■	■	■	■	■

■ : Standard □ : Option at additional cost – : Not available DFO : Dealer Fit Option at additional cost

Model	Colt CZ1 3-Door 1.1 Manual	Colt CZ2 3-Door 1.3 Manual/AMT	Colt Ralliart 3-Door 1.5 Turbo Manual	Colt CZ1 5-Door 1.1 Manual	Colt CZ2 5-Door 1.3 Manual/AMT ClearTec	Colt Ralliart 5-Door 1.5 Turbo Manual
<b>Interior Features</b>						
<b>Audio</b>						
Aerial, roof mounted	■	■	■	■	■	■
Audio remote controls, steering wheel mounted	–	■	■	–	■	■
iPod/MP3 aux input port	■	■	■	■	■	■
Stereo radio/CD with 4 speakers	■	■	–	■	■	–
Stereo radio/CD with 6 speakers	–	–	■	–	–	■
<b>Styling</b>						
Gear knob, leather-wrapped, black (manual only)	–	■	■	–	■	■
Inner door handles, silver	–	■	■	–	■	■
Instrument meter trim, silver	–	■	■	–	■	■
Pedals, alloy sports type	–	–	■	–	–	■
Seat trim, fabric	■	■	■	■	■	■
Sports front seats	–	–	■	–	–	■
Steering wheel, leather-wrapped, black with audio and cruise controls	–	■	■	–	■	■
<b>Convenience</b>						
12v accessory socket, front	■	■	■	■	■	■
Air conditioning, semi-automatic	–	■	■	–	■	■
Assist grip, driver's	–	–	■	–	–	■
Assist grip, front passenger's	■	■	■	■	■	■
Assist grips, rear passengers'	–	–	–	■	■	■
Coat hangers (2)	–	–	–	■	■	■
Cup holders, front (2) and rear (1)	■	■	■	■	■	■
Door pockets, front	■	■	■	■	■	■
Footrest, driver's	■	■	■	■	■	■
Glove box	■	■	■	■	■	■
Illuminated window switch, driver's side	■	■	■	■	■	■
Pollen filter	■	■	■	■	■	■
Seatback storage pocket, driver's side	–	–	■	–	–	■
Seatback storage pocket, passenger's side	–	–	■	–	–	■
Sunvisors with vanity mirrors, driver's and passenger's	■	■	■	■	■	■
<b>Functional</b>						
Auto Stop & Go (AS&G)	–	–	–	–	ClearTec	–
Average fuel consumption display	■	■	■	■	■	■
Average speed display	■	■	■	■	■	■
Cruise control	–	■	■	–	■	■
Door mirrors, internally adjustable	–	–	–	■	–	–
Door mirrors, electrically adjustable and heated	–	–	–	–	■	■
Electric windows, front with driver's auto-down	■	■	■	■	■	■
Electric windows, rear	–	–	–	–	■	–
Exterior temperature display	■	■	■	■	■	■
Fuel lid opener, remote	■	■	■	■	■	■
Gearshift indicator	■	■	■	■	■	■
Headlamp levelling device	■	■	■	■	■	■
Movable luggage/cargo area floor (2-level)	–	–	–	–	■	■
Multi-info display	■	■	■	■	■	■
Range remaining display	■	■	■	■	■	■
Steering wheel, tilt adjustable	■	■	■	■	■	■
<b>Lighting</b>						
Interior lamp with map lamps, front	■	■	■	■	■	■
Luggage/cargo area lamp	■	■	■	■	■	■
<b>Seats</b>						
Driver's seat, height adjustable	■	■	■	■	■	■
Front seats, sliding/reclining	■	■	■	–	–	■
Front seats, sliding/reclining with fully-flat function	–	–	–	■	■	–
Rear seats, 60/40 split backrest and split cushion	■	■	■	■	■	■
Rear seats, split-fold/tumble	■	■	■	■	■	■
Seatbelts, height-adjustable, front	■	■	■	■	■	■



To find out about our special offers scan here

## **MITSUBISHI MOTORS RECYCLING**

We all have a duty to protect the environment. After a long working life we will take back any Mitsubishi Motors vehicle originally sold by The Colt Car Company Ltd. and recycle it in an environmentally friendly manner in accordance with the EU Directive on End-of-Life Vehicles and any applicable national statutory provisions.

All Mitsubishi Motors vehicles sold by The Colt Car Company Ltd., irrespective of date of sale, will be taken back free of charge from the last owner, at one of the designated take-back points, provided the vehicle contains all major components and is free of waste.

For further information please visit [www.cartakeback.com](http://www.cartakeback.com), email [info@cartakeback.com](mailto:info@cartakeback.com) or call the Cartakeback info-line on 0845 257 32 33.

The specification of the vehicles illustrated in this publication may not be applicable to the UK market, furthermore some vehicle illustrations may include accessory items which are not part of UK standard specification. However, every effort has been made to ensure that the written information was accurate, up-to-date and consistent with UK specification at the time of going to press. The right is reserved to change specification, features and prices without prior notice. To avoid any misunderstandings, your Mitsubishi Motors dealer will advise of any alterations made since the date of issue of this brochure. No part of this publication may be reproduced in any form or by any means, without the prior written permission of The Colt Car Company Limited.

Head Office: The Colt Car Company Ltd., Watermoor, Cirencester, Glos. GL7 1LF

Website: [www.mitsubishi-cars.co.uk](http://www.mitsubishi-cars.co.uk)



This brochure has been produced by an ISO14001 environmentally accredited printer where all processes are managed and materials recycled. The paper used to produce this brochure is from sustainable forests, chlorine free and from an ISO14001 accredited mill. This brochure is fully recyclable.