

**OUTLANDER**



# The Crossover to a new way of thinking

At Mitsubishi Motors we've transformed the way we think. Our goal is to become a world leader in the reduction of CO<sub>2</sub> emissions on a global scale. We were the very first mainstream manufacturer to bring an electric vehicle to the UK market and are currently developing new plug-in hybrid and flexible fuel cars; all of our vehicles sold here in the UK are at least 90% recyclable and many of our components are made from recycled parts or utilise plant based resins instead of plastics; we are making smaller and lighter vehicles and employing advanced aerodynamics, fuel efficient tyres and stop-start technologies to name but a few. Of course, small urban vehicles are not a suitable mode of transport for everyone, so we have adopted this new approach across our range. Take the Outlander: despite its generous proportions it has always been remarkably lean and environmentally responsible, and now it boasts a revolutionary new clean diesel engine and a more fuel efficient automatic transmission.

But at Mitsubishi Motors it's not just our cars that are greener. In our offices we're saving waste, power, packaging and becoming paper-free. Our manufacturing process is cleaner too – we employ sheep to keep the grass short; we've planted hundreds of thousands of trees and eliminated environmentally hazardous substances; our factories are switching to water-based paint and working towards zero landfill waste. And with high-efficiency automation, we're doing much of this with the lights turned off. Our philosophy is one of continual evolution and improvement. **We call this Intelligent Motion.**

INTELLIGENT  MOTION





## Perfect balance

Life is a balancing act: on the one hand self-indulgence, on the other the need to transport a number of people and varying amounts of cargo from point A to point B in comfort and safety. Fortunately the Outlander is as good to drive as it is to live with, so satisfying the demands of an active family can still balance with the simple pleasures of handling a truly nimble car. In line with Mitsubishi's Intelligent Motion philosophy it can seat up to seven for the school run, or swallow a couple of mountain

bikes whole, yet its footprint is smaller than that of most family estates. It comes with on-demand all-wheel drive and is so fuel-efficient that it provides returns on a par with those of an ordinary family saloon. Furthermore, although it provides all the high-vantage, big-car protection you could ask for, it has been designed to do so in such a way as to minimise injury to pedestrians or damage to vehicles lighter than itself. Could you ask for a better balance?



#### **Low-environmental impact engine**

Mitsubishi's clever clean diesel engine involves using the MIVEC system which features two different cam profiles to vary the timing, lift and duration of the inlet valves. This means that the engine can vary the amount of fuel needed for each cylinder depending upon the demands being made and so ensures better starting, reduced emissions at lower engine speeds and greater output power at higher ones. Mated with a six-speed manual transmission it gives the 2.2 litre unit enormous punch – 174 bhp, in fact – yet it is also more refined and returns superior fuel economy. Furthermore, an unusually low compression ratio ensures that the engine operates quietly at all speeds.

#### **TC-SST transmission**

Imagine the smoothest automatic gearbox combined with the very quickest manual and you begin to comprehend the talent of the Outlander's Twin Clutch SST option. One clutch engages the gear in use, the other pre-selects the next gear required, so whether you are in automatic or manual mode the changes are exceptionally quick, exceptionally smooth and exceptionally fuel-efficient. Furthermore you can choose between two driving modes: 'Normal' where changes are made at relatively low revs to maximise economy, and 'Sport' for more spirited driving.



## Light up life on the road

Despite their many benefits, the tall profile and raised seating position of a crossover vehicle are rarely conducive to a sporty drive, but the Outlander's athleticism bucks this trend. Its lower centre of gravity and enhanced steering response do not rely on stiffer suspension but come by way of an aluminium roof, wide track and a chassis specifically designed for sporty handling, whilst its braking and four-wheel independent suspension systems were tried and tested in that ultimate driver's car – the Mitsubishi Lancer Evolution.

All Outlanders operate in front wheel drive for normal driving, but it comes with two selectable, electronically controlled four-

wheel drive modes to enable you to tackle everything from heavy rain to snow, towing to tough terrain, or simply give you extra traction in the dry. It is an 'on demand' system, which means that the car automatically calculates the optimum amount of torque required at the rear axle and adjusts itself accordingly – so when you're accelerating away more power will be sent to the rear wheels than when you're cruising steadily, and the more conditions deteriorate the more torque will be transferred to the rear. The result is a car which will light up your life every day, even when conditions are a little more challenging.



On selected models a clever HID xenon adaptive front lighting system peers around the bends to make driving at night easier, whilst fog lamps and indicators on the door mirrors make it even easier to see and be seen.



## Cool in every way

Monochromatic with a touch of silver, the Outlander's cabin is a truly sophisticated place to be; and it feels as cool as it looks thanks to solar-control glass which reduces transmission of the sun's heat by up to 100%. It is this attention to detail which sets the Outlander apart: the door mirrors are heated for clear vision on damp mornings, the wipers automatically adjust for your speed, the glove compartment uses air from the air conditioning to stay cool in the summer and warm – if you want – in the winter. Even the roof is special: a fabric lining to absorb odours ensures a cabin which appeals to every sense.





The way you drive your car has an enormous effect on both economy and emissions so an on-board computer monitors the engine load and tells you exactly when it's best to change gear.\*

\*Manual transmission models only.

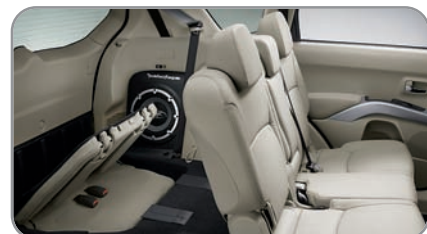




## Best seats all round

Size matters, but perhaps the Outlander's most appealing aspect is its incredible versatility: the front row of seats, perfectly set at hip height for easy access, recline fully to make up a spacious and comfortable bed; the second row also recline for greater comfort, slide backwards and forwards\* to benefit people or parcels at will, split 60:40 and fold-and-tumble forwards in a one-step operation at the touch of a button\*. Finally, a third row\* can add a further couple of seats – perfect for the kids – which, thanks to Mitsubishi's clever Fold 2 Hide system, fold flat into the floor in a matter of seconds. Of course, that elevated seating position gives a panoramic view and everyone gets to enjoy it with progressively higher seat squabs the further back you sit: in an Outlander everyone gets the best seats in the house.

\*Not GX2 models.





## Rockford Fosgate

GX4 models enjoy a Rockford Fosgate premium sound system which produces 710W of power, flooding the entire interior of the Outlander with crystal-clear, speed-sensitive sound through nine, specifically-tuned speakers. These are housed throughout the car and the doors are stiffened and packed with sound absorbing material to turn them into huge speaker boxes. The music server is combined with an HDD navigation system which can store thousands of songs and maps on its 40GB hard drive.

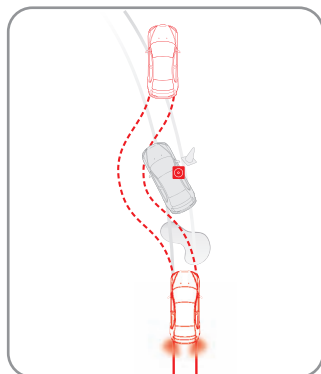
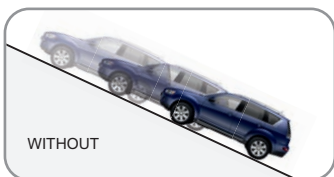
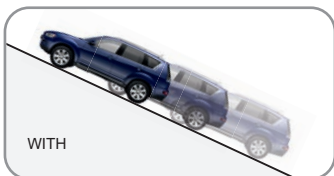




## Safe, but not at the expense of others

The Outlander was designed and engineered to meet the most stringent safety requirements whilst improving pedestrian protection, minimising damage to lighter vehicles and reducing repair costs in the event of low-speed impacts – a tall order met by a variety of new structural measures. For example, a particularly high proportion of high-tensile steel was used to increase body strength whilst keeping the weight down; energy absorption was optimised with a reinforced girdle body construction and unusually-shaped front side members, whilst a triple-leg bearing structure which links these with the dash cross centre and lower members is so effective in dispersing

impact-energy that Outlander occupants are protected whilst damage to a smaller car is reduced. The result is a notably strong vehicle with up to six airbags which are especially effective in dispersing impact-energy. Of course, it's the features which help you to avoid accidents which are of particular interest and the Outlander's are legion, including superior brakes backed up by an override system in the event of the brake and accelerator pedals being pressed at the same time, and a stability and traction control system which identifies and corrects any oversteer or understeer caused by overly ambitious acceleration.



### So much more than ABS

ABS helps to prevent wheel lock and aids control under heavy braking, but on the Outlander it also comes complete with EBD which automatically adjusts the loading on individual wheels to accommodate the location of weight. Emergency braking is also aided by power assistance to boost pressure on the brake pedal and an Emergency Stop signal System which automatically utilises the hazard warning lights to warn those around you of the situation. Finally, the Outlander's clever braking system includes Hill Start Assist which holds the brakes for a couple of seconds until the accelerator is applied to stop you rolling backwards on a hill start.



## Living life to the full

Strong, safe, reliable – it is a Mitsubishi, after all – and a real pleasure to drive, life with the Outlander is quite simply more fun. The car is packed with those little touches which you'll come to wonder how you ever lived without: headlamps which turn themselves on at dusk, for example, a moisture-sensitive windscreen which automatically engages the wipers, steering wheel mounted controls for Bluetooth and audio, privacy glass, a rearview camera and parking sensors\*: the list goes on and on. What's more, the cargo space is little short of amazing – almost 1700 cubic feet of it, in fact – so you can go wherever you want and take loads with you: the split tailgate makes

loading and unloading an easy matter, and when you've finished it's strong enough to provide a very handy seat.

There's no denying that the Outlander will bring a smile to your face day after day, and that even applies to the running costs: a Mitsubishi Service Plan (MSP), purchased at the same time as your car, is available to cover the first three scheduled services. This ensures that you can enjoy skilled servicing, using only genuine parts and Mitsubishi diagnostic equipment, for a modest sum. The Mitsubishi Service Plan can be included in your vehicle's finance and transferred to a new owner when you sell.

\*See pages 22 and 23 for full details of specification by model.



### **Warranty, insurance and MAP**

All new Outlanders come with a comprehensive three-year unlimited mileage\*\* warranty which also includes the Mitsubishi Assistance Package (MAP). Breakdown, accident, theft, vandalism, whatever the reason you need homestart or roadside assistance you're covered 24/7 in over 30 countries throughout Europe. Mitsubishi Motors also offer superior insurance cover which is specifically designed for Mitsubishi vehicles and uses only genuine parts and approved repair centres. And to smooth your progress through an insurance claim, no matter which insurer you use, Mitsubishi First, our accident aftercare programme, handles everything on your behalf – no hassle, no claim forms, no running about, and absolutely no cost to you. It's all part of the special service you get when you buy a Mitsubishi.

\*\*100,000 miles on GX1 4Work commercial model.

# GX2

2.2 DI-D 4WD Manual



## Key features

- 16" steel wheels
- ABS with EBD
- Mitsubishi Active Stability and Traction Control (M-ASTC)
- Hill Start Assist (HSA)
- Rear spoiler with LED stop lamp
- Colour-keyed bumpers
- Colour-keyed electric heated door mirrors
- Front and rear electric windows
- Climate control air conditioning
- Cruise control
- Central locking including tailgate
- Tonneau cover
- Alarm system and keyless entry
- Radio/CD/MP3 player (6 speakers)
- Front dual airbags
- Height adjustable driver's seat
- 12 volt accessory sockets



# GX3

2.2 DI-D 4WD Manual



## Key features

### Specification as GX2 plus:

- 18" alloy wheels
- Privacy glass
- Black roof rails
- Front grille chrome surround
- Side sill chrome insert
- Front fog lamps
- Electric folding door mirrors with side indicators
- Colour-keyed door handles
- Leather steering wheel with remote controls
- Bluetooth hands-free kit
- Leather shift knob & handbrake lever
- Upper dashboard & door trim stitched leather-look trim
- Black leather seats – front & 2nd row (optional)
- One-touch folding 2nd row seats
- Fold 2 Hide 3rd row seats
- iPod / USB connection
- Side and curtain airbags



# GX4

2.2 DI-D 4WD Manual  
2.2 DI-D 4WD TC-SST



## Key features

### Specification as GX3 plus:

- 18" alloy wheels with premium finish
- HID headlamps with washers and auto-levelling
- Adaptive Front lighting System (AFS)
- Electric sunroof
- Reversing camera
- Rear parking sensors
- Windscreen wiper rain sensor
- Steering wheel gearshift paddles (TC-SST model)
- Chrome door entry guards
- Leather-faced seats (front & 2nd row)
- Heated front seats with powered driver's seat
- HDD satellite navigation system
- Rockford Fosgate 710W audio system (9 speakers)



# GX1 4WORK

2.2 DI-D 4WD Manual



## Key features

- 16" steel wheels
- ABS with EBD
- Mitsubishi Active Stability and Traction Control (M-ASTC)
- Hill Start Assist (HSA)
- Rear spoiler with LED stop lamp
- Colour-keyed bumpers
- Colour-keyed electric heated door mirrors
- Front electric windows
- Climate control air conditioning
- Cruise control
- Central locking including tailgate
- Alarm system and keyless entry
- Radio/CD/MP3 player (6 speakers)
- Front dual airbags
- Height adjustable driver's seat
- 12 volt accessory sockets



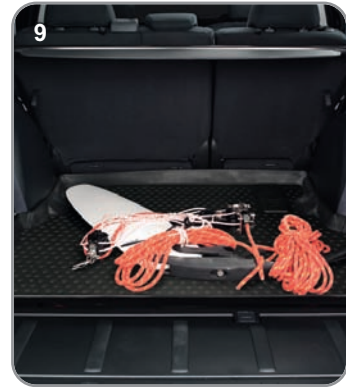
# Accessorise your Outlander

Economical, versatile and a pleasure to drive, the Mitsubishi Outlander is an exceptional everyday vehicle which is also more than capable of taking you on off-road adventures. Specifications are high but there are always ways to personalise your vehicle – to make it fit your own particular needs more precisely. To that end there are a number of approved accessories, all of which benefit from the same excellent warranty as the vehicle itself if fitted when new. So, before you make your decision take a look at the Outlander accessories website on [www.mitsubishi-cars.co.uk/Outlander](http://www.mitsubishi-cars.co.uk/Outlander) and make sure that you make the most of your car.



1. Roof carrier
2. Rear bumper protection plate
3. Rear parking sensors (standard on GX4)
4. Rear skid plate
5. Detachable towbar and wiring kit
6. Rear mudguards
7. Bike carrier





- 8. Textile mat sets
- 9. Boot tray, low type
- 10. Rubber mat set
- 11. Separation rack
- 12. Cargo net
- 13. Boot tray, high type
- 14. Textile boot mat
- 15. Stainless steel entry guard
- 16. Roof-mounted rear seat DVD entertainment system



# Colour Options and Seat Trims

# Dimensional Views



Cool Silver (M)



Stone Grey (P)



Granite Brown (M)



Tanzanite Blue (P)



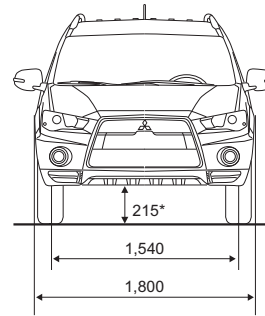
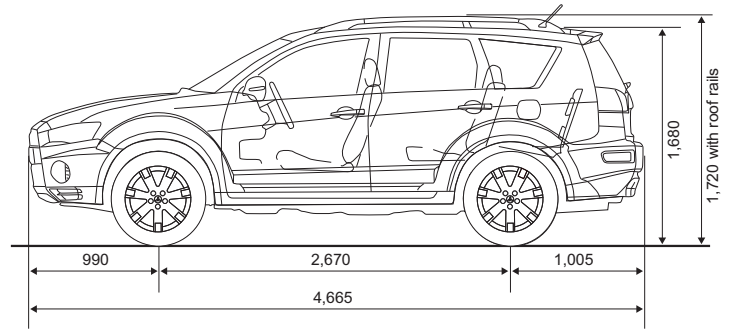
Orient Red (M)



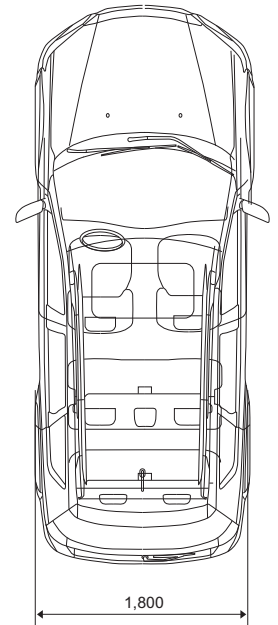
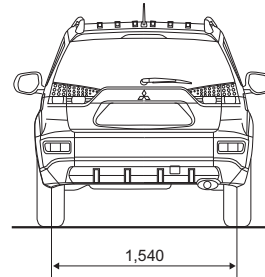
Polar White (S)



Amethyst Black (P)



\*Will vary according to engine, please refer to specification table.



Model	OUTLANDER GX2	OUTLANDER GX3		OUTLANDER GX4	
<b>Exterior colour</b>					
Cool Silver (M)	A31 ■		■	■	-
Stone Grey (P)	A39 ■		■	■	-
Granite Brown (M)	C06 -	-	-	-	■
Tanzanite Blue (P)	D14 ■		■	■	-
Orient Red (M)	P26 ■		■	■	-
Polar White (S)	W19 ■		■	■	-
Amethyst Black (P)	X42 ■		■	■	-
<b>Seats</b>	Fabric (Black/Grey)	Velour/Mesh Fabric (Black)	Leather (not 3rd row) (Black)	Leather (not 3rd row) (Black)	Leather (not 3rd row) (Beige)
<b>Door trim</b>	Fabric Armrests with Front Fabric Inserts (Black)	Fabric Armrests with Leather-look Upper Trim (Black)	Leather Armrests with Leather-look Upper Trim (Black)	Leather-look Armrests with Leather-look Upper Trim (Black)	Leather-look Armrests with Leather-look Upper Trim (Beige)
<b>Headlining</b>	Non-woven Fabric (Grey)				Non-woven Fabric (Beige)
<b>Floor carpet</b>	Needle Punch Velour (Black)				

■ : Available M: Metallic\* P: Pearlescent\* S: Solid \*Metallic/pearlescent paint finish available at additional cost.

Colours and trims reproduced on these pages may vary from the actual colours due to the limitations of the printing process used.



Black/Grey Fabric (GX2)



Black Velour/Mesh Fabric (GX3)



Black Leather (GX3/GX4)

GX3 leather design differs slightly from that shown.



Beige Leather (GX4)

# Technical Specifications

Model		Outlander 2.2 DI-D GX2 4WD Manual	Outlander 2.2 DI-D GX3/GX4 4WD Manual	Outlander 2.2 DI-D GX4 4WD TC-SST
<b>Engine</b>		In-line 4-cylinder 16-valve DOHC MIVEC diesel engine, turbocharger with intercooler		In-line 4-cylinder 16-valve DOHC diesel engine, turbocharger with intercooler
Engine type				
Fuel system		Electronically controlled common rail direct injection		
Displacement	cc	2268	2268	2179
Bore x stroke	mm	86.0 x 97.6	86.0 x 97.6	85.0 x 96.0
Compression ratio		14.9	14.9	16.6
Max. output	kw (bhp) at rpm	130 (174)/3500	130 (174)/3500	115 (154)/4000
Max. torque	Nm (lb.ft) at rpm	380 (280)/2000	380 (280)/2000	380 (280)/2000
<b>Performance/Fuel Consumption/Emissions</b>				
Maximum speed	mph (kph)	124 (200)	124 (200)	123 (198)
Acceleration 0-62 mph	secs	9.8	9.8	11.1
Fuel type		Diesel	Diesel	Diesel
Fuel consumption	Urban mode	7.7 (36.7)	7.8 (36.2)	9.3 (30.4)
lts/100km (mpg)	Extra urban mode	5.3 (53.3)	5.5 (51.4)	6.0 (47.1)
	Combined mode	6.2 (45.6)	6.3 (44.8)	7.2 (39.2)
CO <sub>2</sub> emissions	g/km	163	167	189
Emissions compliance		EU-5	EU-5	EU-5
<b>Suspension/Steering</b>				
Front axle		MacPherson strut, coil springs, telescopic shock absorbers, stabiliser bar		
Rear axle		Trailing arm multi-link, coil springs, telescopic shock absorbers, stabiliser bar		
Brakes		Anti-lock Braking System with Electronic Brakeforce Distribution (ABS + EBD), Brake Assist (BA), Hill Start Assist (HSA) and Emergency Stop signal System (ESS)		
	Front	294mm (11.6") ventilated disc (2-pot)	294mm (11.6") ventilated disc (2-pot)	294mm (11.6") ventilated disc (2-pot)
	Rear	302mm (11.9") disc with internal drum handbrake		
Steering		Rack and pinion, power-assisted	Rack and pinion, power-assisted	Rack and pinion, power-assisted
Min. turning circle	m (ft)	10.6 (34.8)	10.6 (34.8)	10.6 (34.8)
Tyres		215/70R16 100H	225/55R18 98V	225/55R18 98V
Wheels		16 x 6.5JJ steel	18 x 7.0JJ alloy	18 x 7.0JJ alloy
<b>Driveline/Transmission</b>				
Type		AWC (All Wheel Control) on-demand 4WD system with electronic control coupling		
		Mitsubishi Active Stability & Traction Control		
Clutch		Hydraulic	Hydraulic	Hydraulic – Twin Clutch Sport Shift Transmission (TC-SST)
Transmission		Manual – 6-speed	Manual – 6-speed	Automated Manual – 6-speed
Gear ratios	1st	3.818	3.818	3.833
	2nd	1.913	1.913	2.095
	3rd	1.218	1.218	1.345
	4th	0.926	0.926	0.970
	5th	0.853	0.853	0.756
	6th	0.711	0.711	0.613
	Reverse	4.139	4.139	4.011
Final gear ratio	1st-4th	4.058	4.058	4.062
	5th-6th, Reverse	3.450	3.450	4.062
<b>Dimensions</b>				
Cargo room				
l x w x h (3rd row folded)*	mm	950 x 1335 x 1015	950 x 1335 x 1015	950 x 1335 x 1015
l x w x h (2nd & 3rd row folded)*	mm	1830 x 1335 x 1015	1830 x 1335 x 1015	1830 x 1335 x 1015
Exterior l x w x h	mm	4665 x 1800 x 1680	4665 x 1800 x 1720	4665 x 1800 x 1720
Exterior width over extended door mirrors	mm	2030	2030	2030
Ground clearance (unladen)	mm	185	185	176
Track Front	mm	1540	1540	1540
Rear	mm	1540	1540	1540
Wheelbase	mm	2670	2670	2670
Approach angle	degrees	21.0	21.0	21.0
Departure angle	degrees	21.0	21.0	21.0
Ramp breakover	degrees	19.0	19.0	19.0
<b>Weights/Volumes</b>				
Seating capacity		5	7	7
Fuel tank capacity	lts (imp.galls)	60 (13.2)	60 (13.2)	60 (13.2)
Cargo capacity min.	lts VDA (cu.ft.)	774 (27.3)	220 (7.8)	220 (7.8)
Cargo capacity max.	lts VDA (cu.ft.)	1691 (59.6)	1691 (59.6)	1691 (59.6)
Gross vehicle weight	kg (lbs)	2170 (4784)	2410 (5313)	2410 (5313)
Kerb weight	kg (lbs)	1645 (3627)	1705 (3759)	1745 (3847)
Towing capacity Braked	kg (lbs)	2000 (4409)	2000 (4409)	2000 (4409)
Unbraked	kg (lbs)	750 (1653)	750 (1653)	750 (1653)
Trailer nose weight	kg (lbs)	100 (220)	100 (220)	100 (220)
Roof loading capacity	kg (lbs)	80 (176)	80 (176)	80 (176)
<b>Servicing/Insurance/Warranty</b>				
Service intervals		Every 9,000 miles or 12 months, whichever occurs first		Every 12,500 miles or 12 months whichever occurs first
Insurance group		24E	25E/26E	26E
Warranty		3 year unlimited mileage warranty, 12 year anti-corrosion perforation warranty, 3 year pan-European roadside, home and accident assistance		

\*Length dimension as measured at floor level. Width between wheelarches 950mm. All cargo room dimensions are approximate. 3rd row seat not applicable to GX2 model.

The fuel consumption figures quoted are those produced under Government regulations for the purpose of comparing new cars. They should not be regarded as a representation of achievable fuel consumption, which in practice will vary with load, road conditions, driving style and other factors.

# Standard and Optional Equipment

Model	Outlander GX2 2.2 DI-D 4WD Manual	Outlander GX3 2.2 DI-D 4WD Manual	Outlander GX4 2.2 DI-D 4WD Manual	Outlander GX4 2.2 DI-D 4WD TC-SST
<b>Security and Safety Features</b>				
<b>Security</b>				
Alarm/keyless entry	■	■	■	■
Door deadlocks	■	■	■	■
Immobiliser, engine	■	■	■	■
Locking wheel nuts	–	■	■	■
Luggage cover, retractable	■	■	■	■
Visible VIN	■	■	■	■
<b>Safety</b>				
ABS with EBD	■	■	■	■
Airbags SRS, driver's and front passenger's, two-stage inflation	■	■	■	■
Airbag SRS, front passenger's deactivation switch	■	■	■	■
Airbags SRS, front seat side and curtain	–	■	■	■
Brake Assist (BA)	■	■	■	■
Brake override system	■	■	■	■
Child proof rear door locks	■	■	■	■
Electric glass sunroof, anti-trapping	–	–	■	■
Electric windows, anti-trapping, front and rear	■	■	■	■
Emergency Stop signal System (ESS)	■	■	■	■
Fog lamp, rear	■	■	■	■
High-mount stop lamp, rear	■	■	■	■
Hill Start Assist (HSA)	■	■	■	■
ISO-Fix child seat mountings, 2nd row	■	■	■	■
Mitsubishi Active Stability & Traction Control (M-ASTC)	■	■	■	■
Reversing camera	–	–	■	■
Seatbelts, ELR with pretensioners and force limiters, front	■	■	■	■
Seatbelts, ELR 3-point x 3, 2nd row	■	■	■	■
Seatbelts, ELR x 2, 3rd row	–	■	■	■
<b>Exterior Features</b>				
<b>Styling</b>				
16" steel wheels, full covers	■	–	–	–
18" alloy wheels, 7-spoke	–	■	–	–
18" alloy wheels, 7-spoke with premium finish	–	–	■	■
Bumper under panel, front, black	■	–	–	–
Bumper under panel, front, silver	–	■	■	■
Bumper under panel, rear, black	■	■	■	■
Door handles, black	■	–	–	–
Door handles, colour-keyed	–	■	■	■
Door mirrors, colour-keyed	■	■	■	■
Door mirrors with side indicator lamps	–	■	■	■
Front grille, black	■	–	–	–
Front grille, black with chrome surround	–	■	■	■
Metallic or pearlescent paint finish	□	□	□	□
Privacy glass, rear side windows and tailgate window	–	■	■	■
Roof rails, black	–	■	■	■
Roof spoiler, colour-keyed	■	■	■	■
Side sill garnish, black	■	–	–	–
Side sill garnish, black with chrome insert	–	■	■	■
Spare wheel, space-saver type, under rear floor (external)	■	■	■	■
<b>Functional</b>				
Adaptive Front Lighting System (AFS)	–	–	■	■
Aluminium roof panel	■	■	■	■
Automatic lights on/off	■	■	■	■
Central door locking including tailgate, keyless entry	■	■	■	■
Door mirrors, electric heated	■	■	■	■
Door mirrors with electric folding function	–	■	■	■
Fog lamps, front with chrome bezels	–	■	■	■
Halogen headlamps with levelling adjustment	■	■	–	–
HID xenon headlamps with washers and auto-levelling	–	–	■	■
Parking sensors, rear	–	–	■	■
Rain sensor	–	–	■	■
Tailgate, split function	■	■	■	■
Wipers, variable intermittent with washer, front	■	■	■	■
Wiper, intermittent with washer, rear	■	■	■	■
Window demister with timer, rear	■	■	■	■
<b>Interior Features</b>				
<b>Audio/Navigation/Communications</b>				
Aerial, rear roof mounted	■	■	■	■
Bluetooth hands-free telephone kit	–	■	■	■
HDD 40GB navigation/music server system with 7" touch-screen display	–	–	■	■
iPod/MP3 USB socket	–	■	■	■
Rockford Fosgate 710W premium audio system with 9 speakers	–	–	■	■
Stereo radio/CD with MP3 compatibility and 6 speakers	■	■	–	–
USB port with iPod connectivity	–	■	■	■

■ : Standard □ : Option at additional cost – : Not available

Model	Outlander GX2 2.2 DI-D 4WD Manual	Outlander GX3 2.2 DI-D 4WD Manual	Outlander GX4 2.2 DI-D 4WD Manual	Outlander GX4 2.2 DI-D 4WD TC-SST
<b>Interior Features continued</b>				
<b>Styling</b>				
Dashboard air outlet trim, dark silver	■	■	■	■
Door and front centre armrests, leather	–	□	–	–
Door and front centre armrests, leather-look	–	–	■	■
Door entry guards, chrome	–	–	■	■
Door inner handles, chrome	–	■	■	■
Floor console and front door armrest trim panels, dark silver	–	■	■	■
Gearshift knob and handbrake lever, leather-wrapped	–	■	■	■
Instrument panel meter bezels, silver	■	■	■	■
Seat trim, leather, black (excludes 3rd row)	–	□	■	■
Steering wheel, urethane with cruise control buttons	■	–	–	–
Steering wheel, leather-wrapped with remote audio/cruise/Bluetooth controls	–	■	■	■
Upper dashboard and door trim, leather-look with double stitch	–	■	■	■
<b>Convenience</b>				
Air conditioning, climate control with air filter	■	■	■	■
Cargo tie-down hook x 4	■	■	■	■
Coat hanger	■	■	■	■
Cruise control	■	■	■	■
Cup holder, driver's, in dashboard	■	■	■	■
Cup holders, front, in floor console	■	■	■	■
Cup holders, rear, in centre armrest	■	■	■	■
Door pockets, front and rear with bottle holders	■	■	■	■
Floor console box with centre armrest	■	■	■	■
Floor console box armrest with slide adjustment	–	■	■	■
Footrest, driver's	■	■	■	■
Front seat backrest pockets	■	■	■	■
Glove box, lower, lockable and illuminated	■	■	■	■
Glove box, upper	■	■	■	■
Glove box, upper cooling/warming function	–	■	■	■
Illuminated ignition keyhole	■	■	■	■
Key-in-ignition reminder	■	■	■	■
Lights-on warning buzzer	■	■	■	■
Luggage area under-floor compartment	■	–	–	–
Retractable assist grip x 3	■	–	–	–
Retractable assist grip x 4	–	■	■	■
Storage box, rear wheelarch trim, right-hand side	■	■	■	■
Storage compartment, rear quarter trim, left-hand side	■	■	–	–
Sunglasses pocket	■	■	–	–
Sunvisors, driver's & passenger's with illuminated vanity mirrors and ticket holders	■	■	■	■
<b>Functional</b>				
Accessory socket x 3	■	■	■	■
AWC drive mode selector, floor console	■	■	■	■
Electric sunroof, glass, tilt/slide	–	–	■	■
Electric windows, front and rear, with driver's window one-touch open/close	■	■	■	■
Fuel lid opener, remote	■	■	■	■
Gearshift timing indicator	■	■	■	–
Instrument panel light dimmer	■	■	■	■
Multi-information colour LCD display (in instrument panel)	■	■	■	■
SST driving mode switch (Normal/Sport)	–	–	–	■
SST shift paddles on steering column	–	–	–	■
Steering wheel, tilt adjustable	■	■	■	■
<b>Lighting</b>				
Floor console down light, LED, red	■	■	■	■
Interior lamp, front, with map lamps	■	■	■	■
Interior lamp, centre	■	■	■	■
Luggage/cargo area lamp	■	■	■	■
<b>Seats</b>				
Armrest, front centre	■	■	■	■
Armrest, front centre sliding adjustment	–	■	■	■
Armrest, 2nd row – centre folding with built-in cup holders	■	■	■	■
Head restraints, front – height adjustable x 2	■	■	■	■
Head restraints, 2nd row – height adjustable x 3	■	■	■	■
Head restraints, 3rd row – folding	–	■	■	■
Seats, front – driver's height adjuster	■	■	■	■
Seats, front – driver's 4-way powered and 2 x heated seats	–	–	■	■
Seats, front – sliding/reclining/fully flat folding	■	■	■	■
Seats, front – seatbelt height adjustment	■	■	■	■
Seats, 2nd row – 60/40 split-folding/tumble	■	■	■	■
Seats, 2nd row – 60/40 split sliding	–	■	■	■
Seats, 2nd row – one-touch auto-fold/tumble function	–	■	■	■
Seats, 2nd row – reclining backrests	■	■	■	■
Seats, 3rd row – fold-away bench type	–	■	■	■



To find out about our special offers scan here



To see the Outlander in action scan here

## **MITSUBISHI MOTORS RECYCLING**

We all have a duty to protect the environment. After a long working life we will take back any Mitsubishi Motors vehicle originally sold by The Colt Car Company Ltd. and recycle it in an environmentally friendly manner in accordance with the EU Directive on End-of-Life Vehicles and any applicable national statutory provisions.

All Mitsubishi Motors vehicles sold by The Colt Car Company Ltd., irrespective of date of sale, will be taken back free of charge from the last owner, at one of the designated take-back points, provided the vehicle contains all major components and is free of waste.

For further information please visit [www.cartakeback.com](http://www.cartakeback.com), email [info@cartakeback.com](mailto:info@cartakeback.com) or call the Cartakeback info-line on 0845 257 32 33.

The specification of the vehicles illustrated in this publication may not be applicable to the UK market, furthermore some vehicle illustrations may include accessory items which are not part of UK standard specification. However, every effort has been made to ensure that the written information was accurate, up-to-date and consistent with UK specification at the time of going to press. The right is reserved to change specification, features and prices without prior notice. To avoid any misunderstandings, your Mitsubishi Motors dealer will advise of any alterations made since the date of issue of this brochure. No part of this publication may be reproduced in any form or by any means, without the prior written permission of The Colt Car Company Limited.

Head Office: The Colt Car Company Ltd., Watermoor, Cirencester, Glos. GL7 1LF

Website: [www.mitsubishi-cars.co.uk](http://www.mitsubishi-cars.co.uk)



This brochure has been produced by an ISO14001 environmentally accredited printer where all processes are managed and materials recycled. The paper used to produce this brochure is from sustainable forests, chlorine free and from an ISO14001 accredited mill. This brochure is fully recyclable.