

OUTLANDER



INTELLIGENT MOTION





SO FAR AHEAD THAT IT'S IN A CLASS OF ITS OWN

Capable, good-looking and eminently practical – the Mitsubishi Outlander personifies its SUV classification absolutely. But it is a modern SUV, designed for modern-thinking people, so it also does its job with respect. It is an SUV which can seat up to seven people (all in properly padded seats with plenty of leg-room) or swallow a couple of mountain bikes whole, yet its footprint is smaller than that of most family estates. Its 2.2 litre engine delivers decent punch (147 bhp and plenty of torque to hustle along when the mood takes you) and comes with an on-demand four-wheel drive system which is more than capable of beating bad weather or making light work of heavy terrain, yet its frugal and clean-running nature returns economies its peers can't come close to matching. Indeed, manual models with their Automatic Stop & Go function deliver over 52 mpg and automatics in excess of 48 mpg, whilst annual road tax is just

£130 and £180 respectively. It provides all the high-vantage, big-car protection you could ask for, yet it's been designed to do so in such a way as to minimise injury to pedestrians or damage to vehicles lighter than itself; and it offers loads of cutting-edge technologies which make your driving safer, easier and far more pleasurable.

The Outlander has always been an accomplished vehicle but this third generation model goes one step further. It's an altogether smoother character, with superior aerodynamics and lighter on its feet – 100 kilograms lighter, in fact. It is spacious, well-made and versatile; capable, comfortable and consistent, and it goes about its job with a quiet and competent grace. Its styling is refined and it stands head and shoulders above the pack. Indeed, to be truthful it's really in a class of its own.

INTELLIGENT MOTION FROM THE CLEVER CAR COMPANY

Mitsubishi has long been acknowledged to be the clever car company. Over the years we have been quietly innovative in terms of automotive engineering (our Shoguns and Evolutions both set the benchmark in four-wheel drive technology, and in totally different forms, and our inventiveness is displayed through a myriad of ingenious highlights across our entire range) and in clever ways to maximise on space (we were the first manufacturer to introduce the layout now known worldwide as an MPV, we introduced the concept of tall cars with a small footprint and produced the first double cab pick up truly suited to European roads, thus establishing a new niche market). We are also determined to become a world leader in the reduction of CO₂ emissions: to establish a range of vehicles which can be truly lean and clean without need for compromise. To this end we were the very first mainstream manufacturer to bring an electric vehicle to the UK market and we've approached the hybrid concept from a whole new angle, resulting in a total game changer – the Outlander PHEV.



SPORTING POWERS IN A PRACTICAL GUISE

This Outlander is a truly comfortable car: refined and relaxing for driver and passengers alike, with little noise from engine, road or wind whatever your speed. Handling is predictable, steering responsive and there's always plenty of grip and traction, even without bringing all four wheels into play. The 6-speed manual transmission is fine and precise, the automatic equally impressive. Indeed, the 6-speed INVECS-II auto is smart enough to learn your driving style and adjust the timing of its gearshifts accordingly, whilst also offering the option of manual control using steering column-mounted shift paddles for when the mood takes you.

Of course, despite its many advantages the tall profile of an SUV is not always conducive to a satisfying drive, yet the Outlander is an athlete which bucks this trend, not with stiffer suspension but with a wide track and a chassis designed for sporty handling. Indeed, its suspension has always been forgiving over bumpy roads and in this latest incarnation it has been revised to provide an even more noticeably polished ride. But this is more than just a particularly pleasant way to get from A to B: it's an eminently practical vehicle with seating capabilities to rival an MPV, a two-tonne towing capability and a four-wheel drive system man enough to actually take you off road.



ELECTRONICALLY CONTROLLED FOUR-WHEEL DRIVE

The Outlander's AWC (All Wheel Control) system offers three selectable, electronically controlled four-wheel drive modes. It is an 'on demand' system, which means that the car automatically calculates the optimum amount of torque required at each wheel, depending on driving conditions. In 4WD ECO, the Outlander operates in front wheel drive for fuel-efficient driving; however, if the system detects a deterioration in road conditions,

torque is automatically allocated to the rear wheels to help maintain safe progress. For improved traction on slippery road surfaces, 4WD AUTO controls the distribution of power to all four wheels, as well as enhancing stability whilst towing under all road conditions. To cope with more challenging off-road terrain such as mud, sand or wet grass, 4WD LOCK increases the amount of torque sent to the rear wheels to ensure maximum traction.





A QUIETLY SOPHISTICATED ENVIRONMENT

In this third generation Outlander the cabin is properly indicative of its pedigree: surfaces are cushioned; doors shut with a satisfying 'thunk'; piano black accents and metallic inserts look sophisticated and reinforce the overall ambience of a quality build. It's quiet too, thanks to the extensive measures which have been taken to reduce engine, tyre and wind noise.

Furthermore, the attention to detail is typical of Mitsubishi. Wipers automatically adapt to your speed and door mirrors are

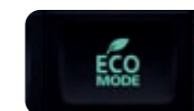
heated for clear vision on damp mornings, as well as being linked to the central door locking system to automatically fold neatly out of harm's way when parked. Then, of course, there are those little luxuries which make travelling a genuine pleasure: heated seats and air conditioning which can be set independently in the front, steering wheel mounted controls for Bluetooth® and audio, a state-of-the-art, multi-function navigation system and a DAB tuner.*

*Specifications vary by model – please refer to pages 22/23 for full details.

DUAL-ZONE AUTOMATIC CLIMATE CONTROL AIR CONDITIONER

Individual temperature settings can be made for the driver's seat and passenger seat**.

**Not GX2 models.



ECO DRIVE SUPPORT SYSTEM

The Outlander helps to maximise environmentally responsible driving through use of the Eco switch. This automatically instigates energy saving controls for the engine (where it prohibits excessive acceleration), air conditioning and four-wheel drive systems (by only utilising 4WD when the wheels slip), displaying the effects in a bar graph and pictorially.



BEST SEATS ALL ROUND

Size matters, of course, but probably the Outlander's most appealing aspect is its incredible versatility. The front row of seats are perfectly set at hip height for easy access, whilst the second row recline for greater comfort, slide backwards and forwards a full 25cms* to benefit people or parcels at will, split 60:40 and fold-and-tumble forwards. Finally, the third row* of seats are designed to disappear individually into the floor, simply and swiftly, to leave a vast and completely flat loading area. Of course, that elevated seating position gives a panoramic view, and everyone gets to enjoy it with progressively higher seat squabs the further back you sit. In an Outlander everyone is equal – they all get the best seats in the house.

*Not GX2 models.



THIRD ROW SEATS

Seat cushions use pads and springs to support passengers and realise outstanding riding comfort. Further improvement in comfort has been achieved through a reclining mechanism that enables the seatback angle to be adjusted in 4 stages.



POWER TAILGATE (GX4/4s)

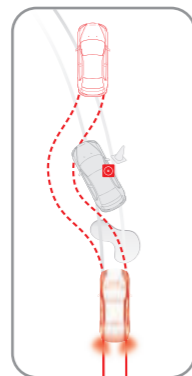
Operation can also be performed from the driver's seat by using a switch, so the tailgate can be conveniently opened and closed without exiting the vehicle.





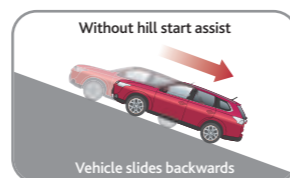
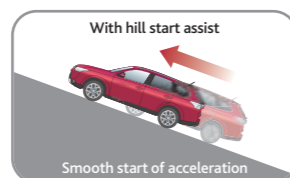
5-STAR SAFETY, BUT NOT AT OTHERS' EXPENSE

Awarded the full five stars in Euro NCAP crash tests, the Outlander is top of its class when it comes to safety. It features a stability and traction control system which identifies and corrects any oversteer or understeer caused by overly ambitious acceleration, as well as all manner of immensely clever and sophisticated active safety features which both help you to avoid incidents and make life on the road a little easier. But, should the worst happen, the Outlander has been designed and engineered to meet the most stringent safety requirements whilst improving pedestrian protection, minimising damage to lighter vehicles and reducing repair costs in the event of low-speed impacts – a tall order which was met by a variety of structural measures. For example, a particularly high proportion of high-tensile steel was used to increase body strength whilst keeping the weight down; energy absorption was optimised with a reinforced girdle body construction which, in combination with additional underfloor reinforcement measures, is so effective in dispersing impact energy that Outlander occupants are protected whilst damage to a smaller car is reduced. Further occupant protection is provided with no fewer than seven airbags.



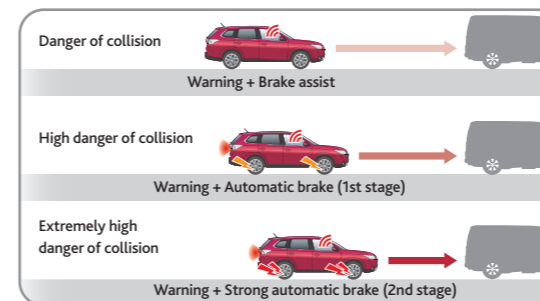
SO MUCH MORE THAN ABS

ABS helps to prevent wheel lock and aids control under heavy braking, but on the Outlander it also comes complete with EBD which automatically adjusts the loading on individual wheels to accommodate the location of weight. Emergency braking is also aided by power assistance to boost pressure on the brake pedal and an Emergency Stop signal System which automatically utilises the hazard warning lights to warn those around you of the situation. Finally, the Outlander's clever braking system includes Hill Start Assist which holds the brakes for a couple of seconds until the accelerator is applied to stop you rolling backwards on a hill start.



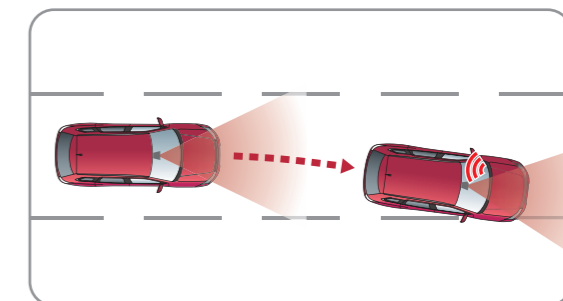
FORWARD COLLISION MITIGATION SYSTEM (GX4s)

The vehicle's radar is used to detect obstructions in front of the vehicle and to issue warnings when there is a danger of collision. Additionally, automatic braking is performed to avoid collision or reduce impact.



LANE DEPARTURE WARNING SYSTEM (GX4s)

A camera is used to monitor the lane position in front of the vehicle. If the vehicle deviates from its lane audible and visual warnings are activated.





SO MUCH BETTER FOR THE LONG HAUL

Strong, safe, reliable (it's what Mitsubishi are renowned for, after all) and a real pleasure to drive: life with an Outlander is, quite simply, so much better. Furthermore, the car is packed with those little touches which you'll soon come to wonder how you ever lived without: privacy glass; wide beam headlamps which turn themselves on at dusk; a moisture-sensitive windscreen which automatically engages the wipers; a rearview camera and parking sensors – the list goes on and on. Then there are features more usually associated with the luxury car sector: features such as an adjustable speed limiter to help

stop you getting carried away, and cruise control which adapts itself to the speed of the car in front*. But above all else the Outlander is an eminently practical car. Fold away the seats and the cargo space is little short of amazing: with the longest load area in its class you can go wherever you want and take loads with you.

Dependable, sturdy, cost-effective to run; practical, comfortable and a warrior at heart: there's no denying that the Mitsubishi Outlander will bring a smile to your face, day, after day, after day.

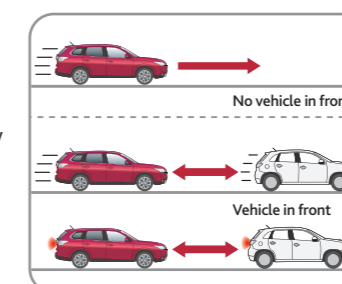
*Specifications vary by model – please refer to pages 22/23 for full details



ADAPTIVE CRUISE CONTROL SYSTEM (ACC) (GX4s)

A safety measure which also makes your life much easier, Adaptive Cruise Control uses radar installed in the front grille to judge distances between itself and the vehicle in front and automatically adjusts the vehicle's speed** to maintain the designated distance. When there is no vehicle in front it acts just like a conventional cruise control system.

**UK models display speed in miles per hour (mph).



ADJUSTABLE SPEED LIMITER

Another advanced safety measure which aids everyday driving, the Adjustable Speed Limiter controls the vehicle's speed** so that it does not exceed that set by the driver. If road conditions – a downhill slope, for example – cause the vehicle's speed to increase beyond that set, an alarm sounds to warn you.

**UK models display speed in miles per hour (mph).



When you buy a new Mitsubishi, you not only get a safe and reliable vehicle that is a real pleasure to drive, you also become part of the Mitsubishi family. And as our nearest and dearest, we want you to feel protected should you ever encounter a problem – that’s why we have **me&my**.

All new Outlanders are provided with a comprehensive three-year, **unlimited mileage*** warranty. Please ask your Authorised Mitsubishi Dealer for full details.

With the **Mitsubishi Assistance Package (MAP)** we go the extra mile. Our assistance programme is there to help should you breakdown at the roadside or at home. It provides vehicle recovery following a breakdown or accident and help if your vehicle is stolen or vandalised and, if you should accidentally fill up with the wrong fuel, don’t worry – we’ll be there for you then too. What’s more, you’re covered 24/7 in over 30 countries throughout Europe. So whether you’re on the daily school run or cruising through the Alps on your holidays, it’s comforting to know that if the unexpected does happen, help is always at hand.

And should you be unlucky enough to have an accident we have **Mitsubishi First** – our customer support service for all Mitsubishi drivers following an accident. No matter which insurer you use, Mitsubishi First smoothes your progress through an insurance claim, handling everything on your behalf – no hassle, no claim forms, no running about, and absolutely no cost to you.

*Limited to 100,000 miles for 4Work commercial variants.

And once you’re part of the family... it’s service with a smile.

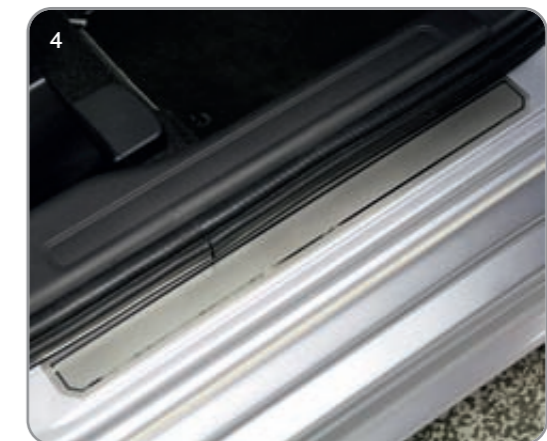
A **Mitsubishi Service Plan**, purchased at the same time as your Outlander, covers the first three scheduled services for a modest sum. It can be included in your vehicle’s finance and transferred to a new owner when you sell.

Mitsubishi Motors also offer superior **insurance cover** at a competitive price which is specifically designed for Mitsubishi vehicles and uses only genuine parts and approved repair centres.



ACCESSORISE YOUR OUTLANDER

Put your Outlander through its paces yet keep it in showroom-perfect condition with the special Protection Pack, comprising of door entry guards, rear bumper protection plate, mud flaps, mat set and boot tray all shown below. Overleaf you will find even more approved accessories which will make the Outlander fit your lifestyle perfectly; they all benefit from the same excellent warranty as the vehicle itself if fitted when new. So before you place your order, consider carefully: talk to your dealer or visit the Outlander accessories website at www.mitsubishi-cars.co.uk/Outlander and make sure you make the most of your choice.

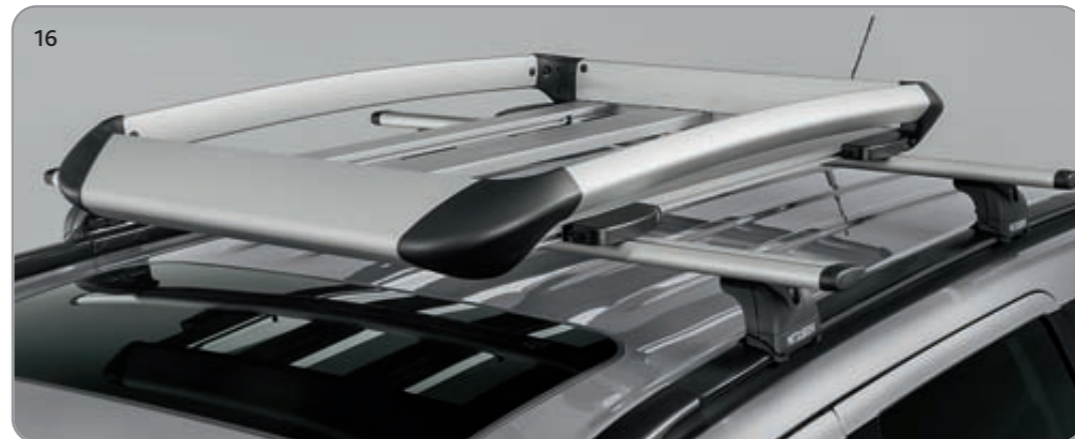


1. Mat set
2. Rear bumper protection plate
3. Boot tray
4. Front and rear door entry guards
5. Rear mudflaps
6. Front mudflaps

- 7. Front footwell illumination
- 8. Headrest DVD system
- 9. Tailgate garnish, chrome
- 10. Rear parking sensors (standard on GX3)
- 11. Front parking sensors



- 12. Tow bar, detachable
- 13. Tow bar (detached)
- 14. Cargo floor net
- 15. Rear dog guard
- 16. Luggage carrier, alloy aero design
- 17. Roof bars
- 18. Bike carrier, alloy



GX2

2.2 DI-D 4WD MANUAL



KEY FEATURES

- 5 seats
- 16" steel wheels
- ABS with EBD
- Mitsubishi Active Stability and Traction Control (M-ASTC)
- Auto Stop & Go (AS&G) (Manual)
- Eco Mode
- Hill Start Assist (HSA)
- Adjustable speed limiter
- Rear spoiler with LED stop lamp
- Automatic lights on/off
- Daytime running lights
- Silver roof rails
- Tonneau cover
- Remote central locking and alarm system
- Colour-keyed bumpers and door handles
- Colour-keyed electric door mirrors
- Silver front door and dashboard trim panels
- Front and rear electric windows
- Climate control
- Cruise control
- Mono-colour LCD info display
- Radio/CD/MP3 player (6 speakers)
- Front/side/curtain/driver's knee airbags
- Height adjustable driver's seat
- 12 volt accessory sockets
- USB connection
- Steering wheel tilt and telescopic adjustments



GX3

2.2 DI-D 4WD MANUAL
2.2 DI-D 4WD AUTOMATIC



KEY FEATURES

SPECIFICATION AS GX2 PLUS:

- 7 seats
- 18" alloy wheels
- Privacy glass
- Chrome inner door handles
- Electric folding heated door mirrors with side indicators
- Leather steering wheel and gearshift knob
- Front fog lamps
- Rear parking sensors
- Dual-zone climate control
- Bluetooth hands-free kit
- Multi-colour LCD info display
- Foldaway 3rd row seats with 2nd row sliding access
- Windscreen wiper rain sensor
- Luggage area underfloor compartment
- Keyless operation system with engine start/stop button (Automatic)

OPTION: Black leather seats



GX4

2.2 DI-D 4WD MANUAL
2.2 DI-D 4WD AUTOMATIC



KEY FEATURES

SPECIFICATION AS GX3 PLUS:

- Keyless operation system with engine start/stop button
- Wide-beam HID headlamps with washers and auto-levelling
- Electric sunroof
- Reversing camera (in lieu of rear parking sensors)
- Power tailgate
- Chrome beltline moulding
- Black leather seats
- Heated front seats with powered driver's seat
- SD card satellite navigation with HD 7" touch-screen
- DAB radio

GX4s

2.2 DI-D 4WD AUTOMATIC

SPECIFICATION AS GX4 PLUS:

- Forward Collision Mitigation system
- Lane Departure Warning
- Adaptive Cruise Control



GX1 4WORK

2.2 DI-D 4WD MANUAL



KEY FEATURES

- 16" steel wheels
- ABS with EBD
- Mitsubishi Active Stability and Traction Control (M-ASTC)
- Auto Stop & Go (AS&G)
- Eco Mode
- Hill Start Assist (HSA)
- Adjustable speed limiter
- Rear spoiler with LED stop lamp
- Automatic lights on/off
- Daytime running lights
- Silver roof rails
- Remote central locking and alarm system
- Colour-keyed bumpers and door handles
- Colour-keyed electric door mirrors
- Silver front door and dashboard trim panels
- Front electric windows
- Climate control

4WORK



- Cruise control
- Mono-colour LCD info display
- Radio/CD/MP3 player (6 speakers)
- Front/side/driver's knee airbags
- Height adjustable driver's seat
- 12 volt accessory sockets
- USB connection
- Steering wheel tilt and telescopic adjustments

COLOUR OPTIONS



COOL SILVER (M)



ORIENT RED (M)



TANZANITE BLUE (P)



ATLANTIC GREY (M)



WHITE PEARL (P)



FROST WHITE (S)



AMETHYST BLACK (P)

SEAT TRIMS



BLACK FABRIC (GX2)



BLACK FABRIC AND LEATHER-LOOK (GX3)



BLACK LEATHER (GX4/GX4s - OPTION GX3)

COLOUR OPTIONS AND SEAT TRIMS

Model		OUTLANDER GX2	OUTLANDER GX3	OUTLANDER GX4	OUTLANDER GX4s
Exterior colour					
Cool Silver (M)	A31	■	■	■	■
Orient Red (M)	P26	■	■	■	■
Tanzanite Blue (P)	D14	■	■	■	■
Atlantic Grey (M)	U17	■	■	■	■
White Pearl (P)	W13	■	■	■	■
Frost White (S)	W37	■	■	■	■
Amethyst Black (P)	X42	■	■	■	■
Seats		Fabric (Black)	Fabric & Leather-look (Black)	Leather (Black)	Leather (Black)
Door trim		Front & Rear Inserts Fabric (Black)	Front & Rear Inserts Fabric (Black)	Front & Rear Inserts Leather (Black)	Front & Rear Inserts Leather (Black)
Headlining		Non-woven Fabric (Beige)			
Floor carpet		Needle Punch (Black)			

■ : Available M: Metallic* P: Pearlescent* S: Solid *Metallic/pearlescent paint finish available at additional cost. Colours and trims reproduced on these pages may vary from the actual colours due to the limitations of the printing process used.

TECHNICAL SPECIFICATIONS

Model		Outlander 2.2 DI-D GX2 4WD Manual	Outlander 2.2 DI-D GX3/GX4 4WD Manual	Outlander 2.2 DI-D GX3/GX4/GX4s 4WD Automatic
Engine		In-line 4-cylinder 16-valve DOHC diesel engine, turbocharger/intercooler with Auto Stop & Go (AS&G)		In-line 4-cylinder 16-valve DOHC diesel engine, turbocharger with intercooler
Engine type		Electronically controlled common rail direct injection		
Fuel system		Electronically controlled common rail direct injection		
Displacement	cc	2268	2268	2268
Bore x stroke	mm	86.0 x 97.6	86.0 x 97.6	86.0 x 97.6
Compression ratio		14.9	14.9	14.9
Max. output	kw (bhp) at rpm	110 (147)/3500	110 (147)/3500	110 (147)/3500
Max. torque	Nm (lb.ft) at rpm	380 (280)/1750-2500	380 (280)/1750-2500	360 (266)/1500-2750
Performance/Fuel Consumption/Emissions				
Maximum speed	mph (kph)	124 (200)	124 (200)	118 (190)
Acceleration 0-62 mph	secs	10.2	10.2	11.7
Fuel type		Diesel	Diesel	Diesel
Fuel consumption	Urban mode	6.4 (44.1)	6.5 (43.5)	7.1 (39.8)
	Extra urban mode	4.6 (61.4)	4.7 (60.1)	5.1 (55.4)
	Combined mode	5.3 (53.3)	5.4 (52.3)	5.8 (48.7)
CO ₂ emissions	g/km	138	140	153
Emissions compliance		EU-5b	EU-5b	EU-5b
Suspension/Steering		MacPherson strut, coil springs, telescopic shock absorbers, stabiliser bar		
Front axle		Trailing arm multi-link, coil springs, telescopic shock absorbers, stabiliser bar		
Rear axle		Anti-lock Braking System with Electronic Brakeforce Distribution (ABS + EBD), Brake Assist (BA), Hill Start Assist (HSA) and Emergency Stop signal System (ESS)		
Brakes		Rack and pinion, electronic power-assisted		
	Front	294mm (11.6") ventilated disc (2-pot)	294mm (11.6") ventilated disc (2-pot)	294mm (11.6") ventilated disc (2-pot)
	Rear	302mm (11.9") disc		
Steering		Rack and pinion, electronic power-assisted		
Min. turning circle	m (ft)	10.6 (34.8)	10.6 (34.8)	10.6 (34.8)
Tyres		215/70R16 100H	225/55R18 98V	225/55R18 98V
Wheels		16 x 6.5J steel	18 x 7.0J alloy	18 x 7.0J alloy
Driveline/Transmission		On-demand 4WD system with electronic control coupling Mitsubishi Active Stability & Traction Control		
Type				
Clutch		Hydraulic	Hydraulic	Torque Converter
Transmission		Manual – 6-speed	Manual – 6-speed	INVECS-II Automatic – 6-speed
Gear ratios	1st	3.818	3.818	4.199
	2nd	1.913	1.913	2.405
	3rd	1.218	1.218	1.583
	4th	0.860	0.860	1.161
	5th	0.790	0.790	0.855
	6th	0.638	0.638	0.685
	Reverse	4.139	4.139	3.457
Final gear ratio	1st-4th	4.058	4.058	3.360
	5th-6th, Reverse	3.450	3.450	3.360
Dimensions				
Exterior l x w x h	mm	4655 x 1810 x 1680	4655 x 1810 x 1680	4655 x 1810 x 1680
Exterior width over extended door mirrors	mm	2120	2120	2120
Ground clearance (unladen)	mm	190	190	190
Track Front	mm	1540	1540	1540
	Rear	1540	1540	1540
Wheelbase	mm	2670	2670	2670
Approach angle	degrees	21.5	21.5	21.5
Departure angle	degrees	22.5	22.5	22.5
Ramp breakover	degrees	21.0	21.0	21.0
Cargo room				
length (3dr row folded) ¹	mm	852	872	872
length (2nd & 3rd row folded) ¹	mm	1741	1741	1741
Weights/Volumes				
Seating capacity		5	7	7
Fuel tank capacity	lts (imp.galls)	60 (13.2)	60 (13.2)	63 (13.8)
Cargo capacity min. (to window level)	lts VDA (cu.ft.)	591 (20.8)	128 (4.5)	128 (4.5)
	(to roof) lts VDA (cu.ft.)	870 (30.7)	173 (6.1)	173 (6.1)
Cargo capacity max. (to window level)	lts VDA (cu.ft.)	1022 (36.0)	913 (32.2)	913 (32.2)
	(to roof) lts VDA (cu.ft.)	1754 (61.8)	1608 (56.7)	1608 (56.7)
Gross vehicle weight	kg (lbs)	2260 (4982)	2260 (4982)	2260 (4982)
Kerb weight	kg (lbs)	1560 (3439)	1595 (3516)	1615 (3560)
Towing capacity Braked	kg (lbs)	2000 (4409)	2000 (4409)	2000 (4409)
	Unbraked	kg (lbs)	750 (1653)	750 (1653)
Trailer nose weight	kg (lbs)	100 (220)	100 (220)	100 (220)
Roof loading capacity	kg (lbs)	80 (176)	80 (176)	80 (176)
Service/Insurance/Warranty		Every 12,500 miles or 12 months, whichever occurs first		
Service intervals				
Insurance group		22E	GX3: 23E / GX4: 24E	GX3: 23E / GX4: 24E / GX4s: 22E
Warranty		3 year unlimited mileage warranty, 12 year anti-corrosion perforation warranty, 3 year pan-European roadside, home and accident assistance		

¹ Length dimension as measured to top of seat backrest: GX3/4/4s – 2nd row seat slid to forward position / GX2 – 2nd row seat fixed (3rd row seat not applicable).

The fuel consumption figures quoted are those produced under Government regulations for the purpose of comparing new cars. They should not be regarded as a representation of achievable fuel consumption, which in practice will vary with load, road conditions, driving style and other factors.

STANDARD AND OPTIONAL EQUIPMENT

Model	Outlander GX2 2.2 DI-D 4WD Manual	Outlander GX3 2.2 DI-D 4WD Manual	Outlander GX3 2.2 DI-D 4WD Automatic	Outlander GX4 2.2 DI-D 4WD Manual	Outlander GX4 2.2 DI-D 4WD Automatic	Outlander GX4s 2.2 DI-D 4WD Automatic
Security and Safety Features						
Security						
Alarm system	■	■	■	■	■	■
Central door locking including tailgate, remote	■	■	■	■	■	■
Door deadlocks	■	■	■	■	■	■
Immobiliser, engine	■	■	■	■	■	■
Keyless operation system	-	-	■	■	■	■
Locking wheel nuts	-	■	■	■	■	■
Luggage cover, retractable	■	■	■	■	■	■
Visible VIN	■	■	■	■	■	■
Safety						
ABS with EBD	■	■	■	■	■	■
Airbag SRS, driver's and front passenger's, two-stage inflation	■	■	■	■	■	■
Airbag SRS, driver's knee protection	■	■	■	■	■	■
Airbags SRS, front seat side and curtain	■	■	■	■	■	■
Airbag SRS, front passenger's deactivation switch	■	■	■	■	■	■
Brake Assist (BA)	■	■	■	■	■	■
Brake override system	■	■	■	■	■	■
Child proof rear door locks	■	■	■	■	■	■
Daytime running lights	■	■	■	■	■	■
Emergency Stop signal System (ESS)	■	■	■	■	■	■
Fog lamp, rear	■	■	■	■	■	■
Forward Collision Mitigation system (FCM)	-	-	-	-	-	■
High-mount stop lamp, rear	■	■	■	■	■	■
Hill Start Assist (HSA)	■	■	■	■	■	■
ISO-Fix child seat mountings, 2nd row	■	■	■	■	■	■
Lane Departure Warning (LDW)	-	-	-	-	-	■
Mitsubishi Active Stability & Traction Control (M-ASTC)	■	■	■	■	■	■
Parking sensors, rear	DFO	■	■	DFO	DFO	DFO
Reversing camera	-	-	-	■	■	■
Seatbelts, ELR with pretensioners and force limiters, front	■	■	■	■	■	■
Seatbelts, ELR 3-point x 3, 2nd row	■	■	■	■	■	■
Seatbelts, ELR x 2, 3rd row	-	■	■	■	■	■
Speed limiter, adjustable	■	■	■	■	■	■
Exterior Features						
Styling						
16" steel wheels with full covers	■	-	-	-	-	-
18" alloy wheels, black/silver	-	■	■	■	■	■
Beltline mouldings, chrome	-	-	-	■	■	■
Bumpers, colour keyed, lower black with silver skid plates	■	■	■	■	■	■
Door handles, colour-keyed	■	■	■	■	■	■
Door mirrors, colour-keyed	■	■	■	■	■	■
Door mirrors with side indicator lamps	-	■	■	■	■	■
Metallic or pearlescent paint finish	□	□	□	□	□	□
Privacy glass, rear door/rear quarter/tailgate windows	-	■	■	■	■	■
Rear lamps, LED type	-	-	-	■	■	■
Roof rails, silver	■	■	■	■	■	■
Roof spoiler, colour-keyed	■	■	■	■	■	■
Wheelarch garnishes, black	■	■	■	■	■	■
Functional						
Automatic lights on/off	■	■	■	■	■	■
Door mirrors, electrically adjustable	■	■	■	■	■	■
Door mirrors, heated and electric folding function	-	■	■	■	■	■
Fog lamps, front with chrome bezels	-	■	■	■	■	■
Halogen headlamps with levelling adjustment	■	■	■	-	-	-
HID xenon headlamps, wide beam with washers and auto-levelling	-	-	-	■	■	■
Spare wheel, space-saver type, under rear floor (external)	■	■	■	■	■	■
Tailgate, power open/close	-	-	-	■	■	■
Wipers, front with rain sensor	-	■	■	■	■	■
Wipers, front, variable intermittent with washer	■	■	■	■	■	■
Wiper, rear, intermittent with washer	■	■	■	■	■	■
Window demister with timer, rear	■	■	■	■	■	■
Interior Features						
Audio/Navigation/Communications						
Aerial, rear roof mounted	■	■	■	■	■	■
Bluetooth® hands-free telephone kit	DFO	■	■	■	■	■
DAB radio	-	-	-	■	■	■
SD card navigation system with HD 7" touch-screen display	-	-	-	■	■	■
Stereo radio/CD with MP3 compatibility and 6 speakers	■	■	■	■	■	■
USB connection	■	■	■	■	■	■

■ : Standard □ : Option at additional cost - : Not available DFO : Dealer Fit Option at additional cost

Model	Outlander GX2 2.2 DI-D 4WD Manual	Outlander GX3 2.2 DI-D 4WD Manual	Outlander GX3 2.2 DI-D 4WD Automatic	Outlander GX4 2.2 DI-D 4WD Manual	Outlander GX4 2.2 DI-D 4WD Automatic	Outlander GX4s 2.2 DI-D 4WD Automatic
Interior Features continued						
Styling						
Dashboard and front door trim panels, silver	■	■	■	■	■	■
Door trim inserts, fabric	■	■	■	-	-	-
Door trim inserts, leather	-	□	□	■	■	■
Door inner handles, chrome	-	■	■	■	■	■
Gearshift, manual, with silver boot surround	■	■	-	■	■	■
Gearshift, automatic, gloss black panel with silver surround	-	-	■	-	■	■
Instrument panel, gloss black	■	-	-	-	-	-
Instrument panel, gloss black with silver outline trim	-	■	■	■	■	■
Seat trim, fabric, black	-	-	-	-	-	-
Seat trim, fabric and leather-look, black	-	-	■	-	-	-
Seat trim, leather, black	-	□	□	■	■	■
Steering wheel and gearshift knob, leather-wrapped, black	-	■	■	■	■	■
Convenience						
Air conditioning, climate control with air filter	■	-	-	-	-	-
Air conditioning, dual-zone climate control with air filter	-	■	■	■	■	■
Cargo tie-down hook x 4	■	■	■	■	■	■
Cruise control	■	■	■	■	■	-
Cruise control, adaptive	-	-	-	-	-	■
Cup holders, front, in floor console	■	■	■	■	■	■
Cup holders, rear, in centre armrest	■	■	■	■	■	■
Cup holder and storage tray, rear wheelarch trims	■	■	■	■	■	■
Door pockets, front and rear with bottle holders	■	■	■	■	■	■
Floor console box with centre armrest	■	■	■	■	■	■
Footrest, driver's	■	■	■	■	■	■
Front seat backrest pocket, driver's side	-	□	□	■	■	■
Front seat backrest pocket, passenger's side	■	■	■	■	■	■
Glove box, illuminated with internal shelf	■	■	■	■	■	■
Ignition keyhole, illuminated	■	■	-	-	-	-
Lights-on warning buzzer	■	■	■	■	■	■
Luggage area under-floor compartment	-	■	■	■	■	■
Retractable assist grip x 4	■	■	■	■	■	■
Steering wheel mounted controls – remote audio/cruise/speed limiter	■	■	■	■	■	■
Steering wheel mounted controls – Bluetooth®	-	■	■	■	■	■
Sunvisors, driver's & passenger's with illuminated vanity mirrors and ticket holders	■	■	■	■	■	■
Functional						
4WD mode selector, push-button type, floor console	■	■	■	■	■	■
Accessory socket x 2 (front & inside console box)	■	■	■	■	■	■
Auto Stop & Go (AS&G)	■	■	-	■	-	-
Electric sunroof, glass, tilt/slide with anti-trapping mechanism	-	-	-	■	■	■
Electric windows, front and rear, with driver's window one-touch open/close and anti-trapping mechanism	■	■	■	■	■	■
Eco mode switch	■	■	■	■	■	■
Engine start/stop button	-	-	■	■	■	■
Fuel lid opener, remote	■	■	■	■	■	■
Gearshift timing indicator	■	■	-	■	-	-
Instrument panel light dimmer	■	■	■	■	■	■
Multi-information LCD display – mono-colour	■	-	-	-	-	-
Multi-information LCD display – multi-colour	-	■	■	■	■	■
Shift paddles on steering column	-	-	■	-	■	■
Steering wheel, tilt (40mm) & telescopic (40mm) adjustments	■	■	■	■	■	■
Lighting						
Interior lamp, front, with map lamps	■	■	■	■	■	■
Interior lamp, rear	■	■	■	■	■	■
Luggage/cargo area lamp	■	■	■	■	■	■
Seats						
Armrest, front centre	■	■	■	■	■	■
Armrest, 2nd row – centre folding with built-in cup holders	■	■	■	■	■	■
Head restraints, front – height adjustable x 2	■	■	■	■	■	■
Head restraints, 2nd row – height adjustable x 3	■	■	■	■	■	■
Head restraints, 3rd row – height adjustable x 2	-	■	■	■	■	■
Seats, front – driver's height adjuster	■	■	■	■	■	■
Seats, front – driver's 4-way powered and 2 x heated seats	-	-	-	■	■	■
Seats, front – seatbelt height adjustment	■	■	■	■	■	■
Seats, front – sliding/reclining/fully flat folding	■	■	■	■	■	■
Seats, 2nd row – 60/40 split-folding/reclining	■	■	■	■	■	■
Seats, 2nd row – sliding	-	■	■	■	■	■
Seats, 3rd row – 50/50 split folding/reclining	-	■	■	■	■	■

MITSUBISHI MOTORS RECYCLING

We all have a duty to protect the environment. After a long working life we will take back any Mitsubishi Motors vehicle originally sold by The Colt Car Company Ltd. and recycle it in an environmentally friendly manner in accordance with the EU Directive on End-of-Life Vehicles and any applicable national statutory provisions.

All Mitsubishi Motors vehicles sold by The Colt Car Company Ltd., irrespective of date of sale, will be taken back free of charge from the last owner, at one of the designated take-back points, provided the vehicle contains all major components and is free of waste.

For further information please visit www.cartakeback.com, email info@cartakeback.com or call the Cartakeback info-line on 0845 257 32 33.

The specification of the vehicles illustrated in this publication may not be applicable to the UK market, furthermore some vehicle illustrations may include accessory items which are not part of UK standard specification. However, every effort has been made to ensure that the written information was accurate, up-to-date and consistent with UK specification at the time of going to press. The right is reserved to change specification, features and prices without prior notice. To avoid any misunderstandings, your Mitsubishi Motors dealer will advise of any alterations made since the date of issue of this brochure. No part of this publication may be reproduced in any form or by any means, without the prior written permission of The Colt Car Company Limited.

Head Office: The Colt Car Company Ltd., Watermoor, Cirencester, Glos. GL7 1LF
Website: www.mitsubishi-cars.co.uk



This brochure has been produced by an ISO14001 environmentally accredited printer where all processes are managed and materials recycled. The paper used to produce this brochure is from sustainable forests, chlorine free and from an ISO14001 accredited mill. This brochure is fully recyclable.