



shogun



*The powerful new Mitsubishi Shoguns*



## Mitsubishi Shogun – the spirit of competition

The advanced engineering concepts employed in the development of the latest Mitsubishi Shoguns including engines, suspension and transmissions, have been tested and proven under every conceivable situation. On the test track. On the road – and off it. Above all, under competition conditions in some of the most gruelling and difficult driving environments in the world, including the infamous 8000 mile Paris-Dakar Rally which Mitsubishi Shoguns have won consistently over the years.

The following heritage of achievement illustrates the many international rally successes which has resulted in the development of one of the very best on and off-road vehicles on earth.



1983 – Paris-Dakar

1st and 2nd Marathon  
1st and 2nd Group II  
1st Team

1984 – Paris-Dakar

3rd Overall  
1st and 2nd Marathon  
1st Group IV  
1st Group II

1985 – Paris-Dakar

1st and 2nd Overall  
1st Marathon  
1st Group IV  
1st Group II  
– Atlas 2nd Overall  
– Wynn's Safari (Australia) 1st Overall  
– Pharoahs 3rd Overall

1986 – Paris-Dakar

3rd, 5th, 7th Overall  
1st Marathon  
1st Group II  
– Atlas 2nd and 3rd Overall  
– Raja Monteblanco 1st Overall  
– Wynn's Safari (Australia) 1st and 3rd Overall

1987 – Paris-Dakar

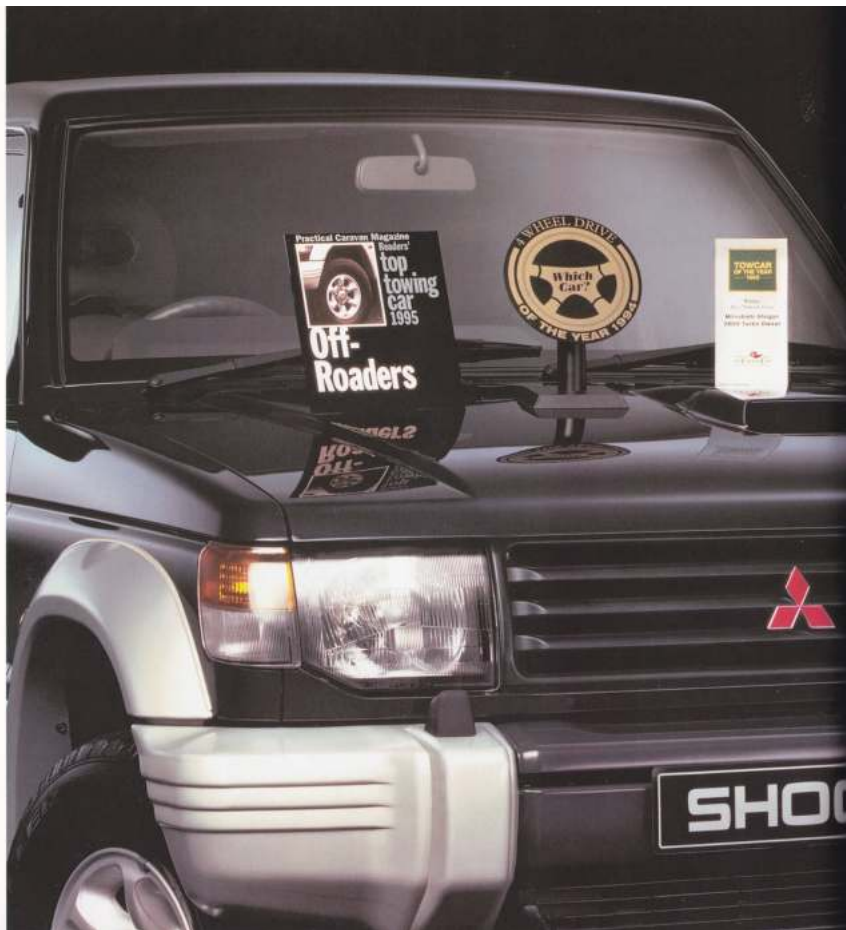
3rd Overall  
– Tunisia 1st Overall  
– Raja Monteblanco 1st Overall

1988 – Paris-Dakar

2nd Overall  
1st, 2nd, 3rd, 4th Group II  
2nd, 4th, 7th Overall  
1st Group II  
– Atlas 2nd, 8th Overall  
1st Group II  
– Raja Monteblanco 6th, 7th Overall



1988 - Wynn's Safari (Australia) 1st Overall 1st Marathon	
1989 - Paris-Dakar - Wynn's Safari (Australia) 1st Overall	3rd, 5th, 6th, 7th and 10th Overall
1990 - Paris-Dakar - Australian Safari Rally - Tow Car of the Year	4th, 5th Overall 1st 4WD Modified Production Class 1st Overall 1st Diesel Category
1991 - Paris-Dakar - Baja Aragon	2nd, 3rd, 4th Overall 1st, 2nd, 5th Overall
1992 - Paris-Cape Town - Atlas	1st, 2nd, 3rd Overall 1st, 2nd Overall
1993 - Paris-Dakar - Tunisia - Atlas - Baja Sardinia - Baja Portugal - Baja Spain - Pharaohs - UAE Desert Challenge	1st Overall 1st T2 Class 1st, 2nd Overall 1st T2 Class 1st Overall 1st T2 Class 1st Overall 1st T2 Class 1st T2 Class 1st T2 Class 1st T1 Class 1st Overall
1994 - Paris-Dakar - Atlas - Baja Portugal - Baja Spain	1st T2 Class 1st T1 Class 2nd Overall 3rd Overall - 1st T2 5th Overall - 1st T1 5th Overall 9th Overall - 1st T1
1995 - To Date - Granada-Dakar Rally	2nd, 3rd 4th Overall and T3 1st, 2nd T2 1st, T1





## *First Place National Awards by UK Press*

In addition to the Shogun's rally successes, this versatile vehicle has also been presented with numerous 'first place' awards by British newspapers and magazines.

The following is a selection of awards presented over the past few years.

---

### **Winner, Off Road Class 1995**

Practical Caravan Magazine Readers' Top Towing Car Awards.

---

### **Winner, 'All Terrain' Vehicle Class**

Caravan Club Towcar of the Year 1995 Awards.

---

### **4-Wheel Drive of the Year 1994**

Which Car? Magazine.

---

### **Winner, Off Road Class 1994**

Practical Caravan Magazine Readers' Top Towing Car Awards.

---

### **4-Wheel Drive of the Year 1993**

Which Car? Magazine (7 times in 8 years - 1986/87/88/89/90/92/93).

---

### **Winner, 'All Terrain' Vehicle Class**

Caravan Club Towcar of the Year 1992 Awards.

---

### **Winner, 'Best Off-Road Vehicle' Category**

Practical Caravan Magazine Readers' Top Towing Car Awards 1992



---

### **Winner, 'Best Off-Road Vehicle' Category**

Practical Caravan Magazine Readers' Top Towing Car Awards 1991

---

### **The Caravan Club Off Road Towcar of the Year 1991**

---

### **The Caravan Club Diesel Towcar of the Year 1990**

---

### **Winner of Diesel Class**

Practical Caravan Magazine Readers Top Towing Car Awards 1990

---

### **Best Off-Road Vehicle 1988**

What Car? Magazine

---

### **Best Off-Road Vehicle 1987**

What Car? Magazine

The Mitsubishi Shogun ♦ Designed to be driven

## Designed like no other 4WD

The Mitsubishi Shogun has already helped to establish the 4-wheel drive market as the fastest growing sector of the car industry.

Now the Shogun range distances itself from conventional all-terrain vehicles with a combination of features and benefits that will help set new trends for the on/off road four wheel drive market for many years to come. Distinguished by its smooth, contoured styling, the Shogun's moulded contours contribute to its 0.48 Cd aerodynamic efficiency while giving a softer visual impression that is equally eye-catching in town or country.

Mitsubishi's designers have created a classic shape where every detail of the bodywork has been integrated to produce a distinctive profile.

Flush-to-the-body square halogen headlamps and rear combination lamps are featured on all models. And special deep side body mouldings protect against corrosion and stone chippings.

Shogun 3-door models also feature elegant practical roof rails, a rear roof

spoiler and a tilt-up/detachable sunroof. The 5-door Shogun models have a large, electrically operated glass sunroof fitted as standard.

Whilst aerodynamics assist handling and fuel efficiency, the traditional Shogun virtues of ruggedness and build quality continue.

Built around an immensely strong ladder frame chassis, the underbody incorporates protection plates for off-road use. The front approach and rear departure angles are designed to provide maximum off-road performance. Large closed sections employed in each part of the chassis frame ensure lateral stiffness.

Body strength and durability are maintained through the extensive use of high tensile and galvanized steel panels that offer added corrosion protection. And every Shogun is also protected by Mitsubishi's unique warranty package. This includes a three year unlimited mileage warranty, a six year anti-corrosion perforation guarantee and a three year pan-European breakdown and recovery service.







**2H** – standard rear wheel drive, low road noise, less tyre wear, better fuel economy.



**4H** – equivalent to a full time 4WD system, it provides added traction and security when driving on slippery or icy road surfaces.



**4Hc** – 4WD high ratios with the centre differential locked for driving off-road.



**N** – the neutral position for operating the power take-off facility.



**4Lc** – 4WD low ratios with the centre differential locked for maximum off-road traction for steep inclines, muddy conditions or very rough terrain. Maximum engine torque is available in this mode.



**Rear Differential Lock** – locks both the left and right wheels to prevent power loss and thus traction through a spinning wheel.



Selectable by the driver, the rear differential lock can be engaged at low speeds. Its primary purpose is to gain extra traction when the vehicle is bogged down in deep mud or snow.





## The world's first super select 4WD system



In developing the latest Shogun range Mitsubishi has revolutionised transmission technology with the world's first Super Select 4WD system.

The innovative system incorporates the merits of both full-time and part-time 4WD. Either two or four-wheel drive can be selected on the move, depending upon the demands of the driving surface. Super Select 4WD incorporates a synchronised front free-wheel differential, allowing changes from 2WD to 4WD, and vice versa, to be made whilst on the move at speeds of up to 62 mph. By means of a single lever, the driver can select either 2WD or 4WD as well as High or Low transfer ratios. The Super Select viscous coupling unit (VCU) automatically controls the front/rear torque split to make the best use of wheel grip available.

The centre differential with VCU allows high speed on-road driving in the 4H position, whilst at low speeds it resolves the traditional 4WD problem of transmission wind-up experienced during cornering and tight manoeuvring. Because the Shogun driver has the option to select 4WD at any time, it means that for normal driving 2WD



can be selected to reduce drive resistance, improve fuel efficiency, reduce tyre wear and lower transmission noise.

In addition to the locked centre differential position which is automatically selected when either the 4WD 'High' or 4WD 'Low' ratios are used, the Shogun's transmission also includes an electrically operated rear differential lock for optimum four-wheel drive performance in really adverse conditions. This can be selected by the driver operating a switch whilst the vehicle is travelling at speeds below 7mph. A series of illuminated warning lights and visual indicators mounted within the instrument panel display precisely the transmission mode in use.



## Designed to take the rough with the smooth

Keeping a grip in all weathers and on all surfaces is the priority for all terrain vehicles and the Shogun shows the way with a suspension design that lets you drive on and off-road with confidence.

The Mitsubishi Shogun features an independent front suspension assembly which incorporates both double wishbones and torsion bar springs. Increased suspension travel enhances ride comfort and improves off-road tyre grip.

### **Multi-Link Rear Suspension**

The Shogun's rear suspension assembly is a three link system with coil springs and shock absorbers, a format renowned for its balance and ride comfort. The coil springs are of a tapered design and this, coupled with revised damping rates and increased suspension travel, not only add to the ride comfort but also to the Shogun's off-road performance. Both the front and rear suspension systems are heavy duty for maximum durability.

### **Heavy Duty Stopping Power**

Braking is by power assisted discs all round; the front discs being ventilated for maximum stopping power. Excellent handbrake performance is provided by the use of 'drum in disc' rear brakes.

### **Multi-Mode ABS (Anti-Lock) Brakes**

Offering sure, balanced stopping power

with excellent directional stability, the Shogun's multi mode ABS is the most intelligent anti-lock braking system in the world. It is standard on 3.5 litre models and optional on all the other GLS models.

Unlike some 4WD vehicles which disengage ABS in 4 wheel drive mode or revert to rear wheel ABS only, the Shogun's system utilises three separate braking patterns to maintain 4-wheel ABS in all driving modes.

### **Power Steering on all Models**

All Mitsubishi Shoguns feature power steering as standard. In order to provide good steering feel for both on and off-road use, the power steering system within the Shogun has been designed so that the power assistance is speed related.

### **Wheels and Tyres**

To handle the on-road performance provided by the Shogun models, the wide 7.0J, 15 inch alloy road wheels are fitted with either 265/70SR15 or 265/70HR15 low noise road tyres as standard. These are speed rated in line with the vehicle's maximum road performance. They do, however, maintain a 30 per cent off-road traction capability, in order to meet the off-road demands of most drivers. The Shogun GLX models are equipped with 6.0J, 15 inch steel wheels and 235/75 SR15 tyres.







## Four wheel drive luxury

The Shogun is the paradox of the off-road vehicles' traditional utilitarian image. From the moment you sit inside you're unmistakably in a world of comfort and luxury, regardless of how inhospitable conditions may be outside.

The Mitsubishi Shogun reflects the international demand from customers who are not prepared to trade comfort for performance.

The interior is warm, spacious and inviting with the ambience and quality of a luxury executive saloon. Beneath the laminated tinted glass windscreen, an attractive and functional fascia maintains the family theme of Mitsubishi passenger cars with smooth surfaces and rounded contours. It incorporates not only the standard gauges – speedometer and tachometer, engine status indicators, etc. – but also features a full range of visual indicators to advise of the appropriate 4WD drivetrain and automatic transmission modes.

The GLS Shogun's centre console houses an exterior thermometer, altimeter and an inclinometer to provide useful safety information for climbing or traversing off-road.



Steering column mounted stalks control the indicators, variable speed intermittent wipers\*, the lights and the auto cruise control which is standard on GLS models. Switches for the electrically operated windows, which are also fitted as standard, are incorporated within the door armrests.

All models feature a comprehensively equipped tool box located within the rear door, an inspection light with trailing lead\*, front and rear accessory power sockets\*, central door locking, remote fuel lid opener, stereo radio/cassette player with four speakers and electrical aerial\*, two map reading lights\*, headlamp levelling\*, headlamp washers, adjustable head restraints front and rear and carpeting throughout. In addition, the 3.5 litre Shoguns have a multi-change CD player incorporated within the sound system.



\*Please refer to Features and Specification charts for specific model applications.





## *Four wheel drive luxury*

Both the large driver and passenger door mirrors are electrically adjustable from the driver's position and are also heated.

A highly efficient dual bi-level heating and ventilation system, front and rear, comes as standard and features a 4-speed fan and warm air flow for rapid defrosting. Air conditioning is included in the 3.5 litre Shoguns and available as an accessory option on other models.

One of the most important aspects of an all-terrain vehicle is its passenger and load carrying capacity, and here, the Shogun once again demonstrates its superiority.

The three door model is a full five seat vehicle. In addition, it offers a 'walk-in' memory for the front seats, so that they

return to their original position once the rear occupants have either entered or left the vehicle. The rear seat backs can be individually folded for an increased cargo facility and a removable parcel shelf is also fitted.







## *New Shogun GLX makes Mitsubishi's award-winning off-roader easier than ever to own.*



As the UK 4x4 market continues to expand, Mitsubishi Motors in the UK has taken the bold step of expanding the Shogun range to include the distinctive three and five door Turbo Diesel GLX. These visually different, alternative specification models are being introduced to appeal to those who may be considering buying a second Shogun or indeed a new Shogun for the first time.

With the addition of the two GLX versions, there are now EIGHT models making up the 1995 Shogun range. The Mitsubishi Shogun has established itself as the world's best selling off-road car. Over 1.25 million have been manufactured in 11 years with current annual production of 180,000 units being sold in a total of 150 countries worldwide.

The Shogun 3-Door GLX, powered by a 2.5 litre, 98 bhp, Turbo Diesel, "Silent Shafts" engine with a 5-speed manual transmission, has a maximum speed of 91 mph and fuel consumption ranges from 20.9 mpg to 32.1 mpg.

The Shogun 5-Door GLX uses the latest 2.8 litre, 123 bhp, Turbo Diesel unit. This model is available with either 5-speed manual, or 4-speed, 3-mode automatic transmission. Top speed is 94 mph with fuel consumption ranging from 20.3 mpg to 30.1 mpg.

In common with all other Shogun models, the new GLX versions have Mitsubishi's sophisticated Super Select 4WD System with centre and rear differential locks and a high/low ratio transfer box.

GLX models are built around the same strong ladder frame chassis and the underbody incorporates protector plates for off-road use. Body rigidity and longevity are guaranteed by using high tensile and galvanised steels for construction. And of course, the GLX Shogun carries the same unique Mitsubishi Warranty package, 3 years unlimited mileage, 6 years anti-corrosion perforation guarantee and the 3 year pan-European breakdown and recovery service. No other manufacturer has the confidence to offer the depth and breadth of vehicle protection as Mitsubishi Motors.

The Shogun 3-Door GLX is available with an extra cost manual tilt/detachable sunroof and the 5-Door GLX version has an electrically operated sliding glass sunroof as an extra cost option.



## Shogun power

### ***The 2.8 Litre Turbo Diesel with Intercooler***

Responding to market trends and requirements, Mitsubishi Motors have developed a totally new Turbo Diesel engine for the FIVE door models in the Shogun range. This 2.8 litre, 4-cylinder, SOHC, balancer shaft engine with turbocharger and intercooler has an actual displacement of 2835 cc. Power output is 123 bhp at 4000 rpm, and torque is 215 lb ft at 2000 rpm. Top speed is 94 mph with a 0-100 kmh (0 to 62 mph) time of 17.3 seconds for the manual transmission GLS model. An exhaust gas re-circulation system is fitted to reduce emissions. The 2.8 litre Turbo Diesel Shogun 5-door can be distinguished from its petrol engined counterparts by an air intake located in the bonnet. This maximises intercooler efficiency.

Like its 3.5 litre petrol stablemate, this new engine has been developed to significantly improve on-road high speed cruising, acceleration, on and off-road flexibility and low speed torque.

The cylinder head is



lightweight, high rigidity, aluminium alloy utilising a direct drive SOHC, 2 valves per cylinder, in-line layout. The cylinder block is of 'sleeveless' design where the cylinder walls are laser tempered for hardness resulting in greater durability and long life. Counter rotating balancer shafts and a ladder frame design for the lower area of the crankcase reduce vibration and noise levels.

In addition to improved

performance, the design brief for this unit was greater fuel efficiency, reduced noise and vibration levels and fewer emissions.

### ***The 2.5 Litre Turbo Diesel with Intercooler***

The 2477 CC, SOHC, 4-cylinder, Turbo Diesel engine with balancer shafts powers the 3-door Turbo Diesel Shogun with manual transmission. Power output is 98 bhp at 4200 rpm, whilst torque is 177 lb ft at 2000 rpm.

## Shogun power

### **The 3 Litre V6-24V**

A revised 3 litre V6-24V engine was introduced for the 1995 Shogun 3 and 5 door models. The 60°, V6, SOHC, 24 valve Mitsubishi engine with ECI-MULTI electronic fuel injection and roller rocker arms, has an actual displacement of 2972 cc. Power output is 178 bhp at 5500 rpm and torque is 188 lb ft at 4500 rpm. Top speed is 109 mph with a 0-100 kmh (0 to 62 mph) time of 11.1 seconds for the 3-door model and 12.1 seconds for the 5-door version with manual transmission.

### **The 3.5 Litre V6-24V**

Flagship power unit of the new 1995 Shogun range is a new 3.5 litre petrol engine. Available for top specification 3- and 5-door models with the choice of manual or automatic transmissions, this new 3.5 litre, 60° V6, DOHC, 24 valve engine with ECI-Multi electronic fuel injection and roller rocker arms, is developed from the unit used in the high performance Mitsubishi 3000 GT. Actual cubic capacity is 3,497 cc producing 205 bhp at 5,000 rpm and maximum torque of 221 lb ft at 3000 rpm. Top



speed is 116 mph with a 0-100 kmh (0 to 62 mph) time of 9.5 seconds for the 3-door manual transmission version and 10.5 seconds for the 5-door model.

The 3.5 litre engine uses a new inlet manifold with an electronically controlled variable induction system. Used to improve inlet efficiency, two 'ports' or 'tracts' are used. A long primary port provides a significant increase

in maximum torque at low to medium speeds and a short secondary port comes into operation at higher speeds for improved top end power and throttle response. This new engine has been developed specifically to provide top models in the Shogun range with smooth and refined high speed on-road performance and extra power at low speeds off-road.

---

## Transmissions

---



All 1994 model year Mitsubishi Shogun models, with the exception of the 3-door 2.5 Turbo Diesel, are now available with the option of automatic transmission.

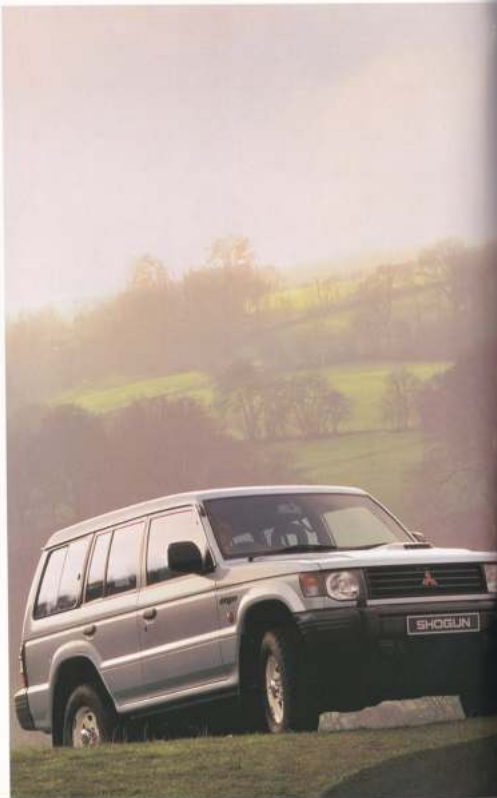
### **New 3-Mode Automatic Gearbox**

The new 3-mode, 4-speed automatic transmission has an Electronic Control Management System to improve gear change smoothness, particularly from Neutral to Drive.

With this latest automatic transmission the driver can operate a simple switch to choose one of the following three power modes:



POWER:	Convenient for uphill and off-road driving. Also offers extra on-road performance for overtaking and high speed motoring.
ECONOMY:	Economical on-road everyday driving.
HOLD:	Selects 2nd gear for starting off on slippery surfaces on and off-road. Provides maximum torque at low wheel speeds.



## Shogun Safety



### ***Driver's side SRS airbag for advanced passive safety.***

The 3.5 litre Shogun is the first production 4WD off-road vehicle to offer an SRS airbag system. The Shogun's airbag uses two sensors to monitor vehicle deceleration. If necessary, the airbag is electronically inflated to protect the driver from head injury in the event of an accident. The SRS airbag should always be used in conjunction with safety belts.

### ***Side door impact bars enhance safety and vehicle strength.***

All Shogun side doors are fitted with impact resistant high-tensile steel bars which are designed to offer protection for the occupants in the event of a side-on collision. In addition, these bars help to maintain cabin integrity in a frontal collision, which also improves occupant safety.

### ***Soft, padded dash with cross-member prevents dashboard deformation and break-ups.***

The Shogun's front dash is constructed of well-padded resin to eliminate dangerous sharp edges. It is also fitted with a cross-member to prevent it from breaking up in an accident.

### ***Super-strong ladder frame for better body strength.***

The Shogun uses a very rigid ladder-type frame that is built from two closed box-section and round cross-members. With the benefit of bending stiffness and torsional rigidity, this type of chassis frame helps to maintain structural integrity in the event of an accident.



### ***High-tensile and rust-proof steel for better strength and durability.***

Mitsubishi Motors makes extensive use of anti-corrosion steel in the construction of the vehicle to ensure long life. Moreover, much of the body, including outer panels, is made from high-tensile steel.

### ***Front and rear ELR seatbelts and adjustable seatbelt anchors provide maximum driver and passenger safety.***

The front and rear seats of the Shogun are fitted with 3-point ELR

(Emergency Locking Retractor) seatbelts. For greater comfort, the front seatbelts are equipped with adjustable seatbelt shoulder anchors that allow the seatbelt to be tailored to the physical build of each individual.

### ***Fuel tank roll-over cut-off valve for fire prevention.***

All Shoguns are fitted with a roll-over fuel cut-off valve. They also have a plastic screw-type fuel cap for a better seal to prevent fuel spillage in an accident. This cap also enables gradual equalization of the pressure between the tank and the outside when being unscrewed.

### ***Excellent visibility and headlamp washers.***

The 44° angled windshield enables an optimal field of vision. Headlamp washers with 3.7-litre washer tank ensure that the headlamps provide maximum illumination, even during off-road driving.





## Mitsubishi 4WD country code



When you own a Mitsubishi Shogun you have the potential to drive "off road", leaving the tarmac behind for the delights of the countryside.

Like all countryside pursuits, however, driving on unsurfaced roads (Green Lanes) should be carried out with care and consideration for others.

The Land Access and Rights Association (LARA) has produced a Code of Conduct to help drivers gain the most from their recreation and to protect future access to the countryside.



### *The Driver's Countryside Code*

1. Use only vehicular rights of way. Not all green lanes have vehicular rights.
2. Keep to the defined track. Detour only to pass immovable obstructions. Report any obstructions (including low branches) to the highway authority. If the route is not obvious on the ground, ask locally, or check on the maps held at the highway authority offices.
3. Travel at a quiet and unobtrusive pace and when travelling in groups, keep to a small number.
4. Ensure your vehicle and yourself are fully road-legal. Green lanes are subject to the same laws as surfaced roads. There is no public right to drive on common land, moorland, sand dunes, or beach.
5. **PAY ATTENTION TO "THE FOUR Ws"**  
**WEATHER** Do not travel on green roads when they risk being damaged beyond a point of natural recovery when the weather improves.  
**WEIGHT** Do not use lanes which may be seriously damaged by the wheel pressure applied by your vehicle.  
**WIDTH** Do not use lanes which are too narrow for your vehicle. Avoid damage to trees, hedgerows and boundaries.  
**WINCHES** Use only when unavoidable, your priority should be to avoid damage to trees, walls or the surface while recovering.
6. Respect the life of the countryside.  
Be courteous to other road users, including walkers and take great care when passing horses. Be prepared to stop your engine if necessary. Always fasten gates and take care near livestock.
7. Remember that wildlife faces many threats and green lanes can be valuable habitats. Take special care in spring and early summer.

For further information contact LARA on (0788) 541137.





# Shogun GLX Specifications

MODEL	SWB 2.5 TD GLX	LWB 2.8 TD GLX
Engine:	4-cylinder, in-line SOHC, with "Silent Shafts" Turbocharger Intercooler and Oil Cooler	
Displacement:	2477cc	2856cc
Bore/Stroke mm:	90.1 x 95.0	95.0 x 100.0
Compression Ratio:	21.0:1	21.0:1
Maximum Output:	90 bhp @ 4300 rpm	123 bhp @ 4000 rpm
Maximum Torque:	177 lb. ft. @ 3000 rpm	215 lb. ft. @ 3000 rpm
Fuel System:	Indirect fuel injection, Rotary VE, type pump, Electronic "spark-glow" start.	
Steering:	Recirculating ball and pin with variable assistance power steering.	
Suspension:	Front:	Independent double wishbone system has telescopic shock absorbers, anti-roll bar.
	Rear:	1-Plan axle, 1-link, progressive spring and springs, telescopic shock absorbers, anti-roll bar.
Brakes:	Power assisted, tandem vacuum booster, load-sensing proportioning valve. Disc brakes front (ventilated) and rear.	
Transmission:	Manual:	5 speed manual
	Automatic:	4 speed "Multimode"
Minimum Ground Clearance:	305 mm (12.1")	190 mm (7.5")
Minimum Turning Circle:	10.6 m (34.8 ft)	11.8 m (38.8 ft)
Kerb Weight:	Manual:	1730 kg (3814 lbs)
	Automatic:	2001 kg (4420 lbs)
Gross Vehicle Weight:	2310 kg (5094 lbs)	2720 kg (5997 lbs)
Towing Capacity:	Braked:	3000 kg (6617 lbs)
	Trailer Brake Weight:	100 kg (220 lbs)
Performance:	Maximum Speed:	91 mph
	Acceleration 0-62 mph:	16.4 seconds
Fuel Tank Capacity:	75 litres (16.6 Imp. Gall)	92 litres (20.4 Imp. Gall)
Fuel Type:	Diesel	
Tyres:	230/75SR13	
Wheels:	6.00 x 13" Steel	
Wheelbase:	2420 mm (96.3")	2725 mm (107.3")
Approach Angle:	39.3°	39.5°
Departure Angle:	34.3°	26.3°
Ramp Break Over:	26.5°	23.0°
Seating Capacity:	5	7

	SWB 2.5 TD GLX	LWB 2.8 TD GLX
<b>INTERIOR EQUIPMENT</b>		
Tilt-adjustable steering column	●	●
"Jewellery" wheel nut trim	●	●
Third row fold-away seats	-	-
Front seat side support adjuster	●	●
Front seat lumbar support adjuster	●	●
Second row side armrests with cup holders	●	●
See-through type head restraints all seats	●	●
Split-folding second row seats	●	-
Second row folding bench seat	-	-
Side folding third row seats	-	-
Including lockers all seats	●	●
Front seat back pockets	●	●
Height adjustable front seatbelt anchors	●	●
Floor console box with cup holder	●	●
Tie-down hooks	●	●
Electronic speedometer with trip meter	●	●
Tachometer	●	●
Illuminated ignition keyhole with 12-second timer	●	●
Digital quartz clock	●	●
4WD Discreet mode indicator	●	●
Radio-cassette & 4 speakers	●	●
Electric front windows	●	●
Electric rear windows	-	-
Electric door mirrors	●	●
Central door locking including tailgate	●	●

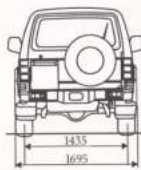
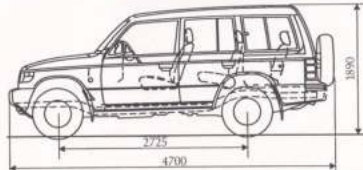
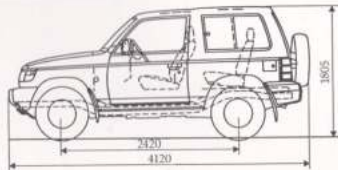
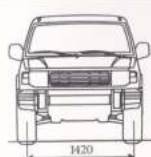
	SWB 2.5 TD GLX	LWB 2.8 TD GLX
<b>EXTERIOR EQUIPMENT</b>		
Flush fitting square halogen headlamps	●	●
Headlamp washers	●	●
Tinted glass	●	●
Rear window de-mister	●	●
Sliding rear quarter windows	●	●
Tilt-up/downable glass sunroof	DOF	-
Electric sliding glass sunroof	-	DOF
<b>TECHNICAL EQUIPMENT</b>		
"Super-select" 4WD system	●	●
Rear differential lock	●	●
6.00-13 Styled steel wheels	●	●
Side impact door beams	●	●
Power-assisted steering	●	●
Rear intercomer mirror with washer	●	●
Auxiliary sockets	●	●
Inspection lamp, magnetic with trailing lead	-	●
● Standard - - Not Available DOF Diamond Option Pack		

## PASSENGER CAR FUEL CONSUMPTION ORDER 193 FUEL CONSUMPTION TESTS - MANUAL

MODEL	URBAN CYCLE	CONSTANT 56mph	CONSTANT 75mph
4-DOOR 2.5 TURBO D	27.2 mpg (10.4/100km)	32.1 mpg (8.8/100km)	30.9 mpg (13.5/100km)
5-DOOR 2.8 TURBO D	30.9 mpg (13.5/100km)	30.1 mpg (9.6/100km)	30.3 mpg (13.6/100km)

## FUEL CONSUMPTION TEST - AUTOMATIC

MODEL	URBAN CYCLE	CONSTANT 56mph	CONSTANT 75mph
5-DOOR 2.8 TURBO D	23.2 mpg (13.3/100km)	29.1 mpg (9.7/100km)	28.8 mpg (13.4/100km)



## Shogun GLS Principal Standard Features



	3-door 2.5 litre T/D	3-door 3 litre V6	3-door 3.5 litre V6	5-door 2.8 litre T/D	5-door 3 litre V6	5-door 3.5 litre V6
Super Select Transmission	●	●	●	●	●	●
Transfer High/Low Ratio	●	●	●	●	●	●
Rear Differential Lock	●	●	●	●	●	●
Heavy Duty Suspension	●	●	●	●	●	●
Alloy Road Wheels	●	●	●	●	●	●
Low Noise Tyres	●	●	●	●	●	●
Power Assisted Steering	●	●	●	●	●	●
Halogen Headlights	●	●	●	●	●	●
Headlight Levelling	●	●	●	●	●	●
Headlight Washers	●	●	●	●	●	●
Laminated Windscreen/Tinted Glass	●	●	●	●	●	●
Lower Windscreen Heating	-	-	●	-	-	●
Roof Spoiler/Carrier Rails	●	●	●	-	-	-
Tilt Adjustable Steering Column	●	●	●	●	●	●
Front Seat Centre Armrests	-	-	-	●	●	●
Rear Parcel Shelf	●	●	●	-	-	-
Tool Box in Rear Door	●	●	●	●	●	●
Accessory Sockets	●	●	●	●	●	●
Trailing Inspection Light	●	●	●	●	●	●
Front and Rear Heaters	●	●	●	●	●	●
Air Conditioning	-	-	●	-	-	●
Multi-Meter (Altimeter, Inclinometer, Thermometer)	●	●	●	●	●	●
Digital Quartz Clock	●	●	●	●	●	●
Auto Cruise Control	●	●	●	●	●	●

## Shogun GLS Principal Standard Features

	3-door 2.5 litre T/D	3-door 3 litre V6	3-door 3.5 litre V6	5-door 2.8 litre T/D	5-door 3 litre V6	5-door 3.5 litre V6
Stereo Radio Cassette/4 Speakers	●	●	●	●	●	●
Multi-Change CD Player	-	-	●	●	-	●
Electric Aerial with Half-Height Switch	●	●	●	●	●	●
Electric Front Windows	●	●	●	●	●	●
Electric Rear Windows	-	-	-	●	●	●
Electrically Heated/Adjustable Door Mirrors	●	●	●	●	●	●
Central Door Locking (Including Tailgate)	●	●	●	●	●	●
Tilt/Detachable Glass Sunroof	●	●	●	-	-	-
Electric Sliding Glass Sunroof	-	-	-	●	●	●
Split Folding Rear Seat backrests	●	●	●	-	-	-
Twin Fold-away Third Row Seats	-	-	-	●	●	●
Remote Fuel Lid Release	●	●	●	●	●	●
Windscreen Wash/Wipe: 2-speed & Variable	●	●	●	●	●	●
Tailgate Wash/Wipe: with Intermittent	●	●	●	●	●	●
Driver's Side SRS Airbag	-	-	●	-	-	●
Multi-Mode ABS Braking	DOP	DOP	●	DOP	DOP	●
Remote Control Shock Absorbers	DOP	DOP	●	DOP	DOP	●
Electronic Compass/Thermometer	DOP	DOP	●	DOP	DOP	●
Leather Interior Trim	-	-	-	DOP	DOP	●
Heated Front Seats	-	-	-	DOP	DOP	●
Adjustable Suspension Seats	-	-	-	DOP	DOP	-
Electrically Adjustable Driver's Seat	-	-	-	-	-	●

DOP = DIAMOND OPTION PACK MODELS ONLY



# Shogun GLS Specifications

ITEM		2.5 TURBO DIESEL 3-DOOR	2.8 TURBO DIESEL 5-DOOR	3.0 V6 3-DOOR	3.0 V6 5-DOOR	3.5 V6 3-DOOR	3.5 V6 5-DOOR	
DIMENSIONS & WEIGHTS	Exterior length	mm (in)	4145 mm (163.2")	4725 mm (186.0")	4145 mm (163.3")	4725 mm (186.0")	4145 mm (163.3")	
	Exterior width	mm (in)	1785 mm (70.3")	1785 mm (70.3")	1785 mm (70.3")	1785 mm (70.3")	1785 mm (70.3")	
	Exterior height	mm (in)	1815 mm (71.5")	1895 mm (74.6")	1845 mm (72.6")	1895 mm (74.6")	1895 mm (74.6")	
	Wheelbase	mm (in)	2420 mm (95.3")	2725 mm (107.3")	2430 mm (96.1")	2725 mm (107.3")	2430 mm (96.1")	
	Approach Angle	degrees	40.5°	40.5°	40.5°	40.5°	40.5°	
	Departure Angle	degrees	35.0°	26.5°	37.5°	26.5°	37.5°	
	Ramp Break Over	degrees	27.0°	23.5°	27.0°	23.5°	27.0°	
	Track	Front Rear	mm (in)	1465 mm ( 57.7") 1480 mm ( 58.3")	1465 mm ( 57.7") 1480 mm ( 58.3")	1465 mm ( 57.7") 1480 mm ( 58.3")	1465 mm ( 57.7") 1480 mm ( 58.3")	1465 mm ( 57.7") 1480 mm ( 58.3")
	Seating Capacity		5	7	5	5	5	
	Min. Ground Clearance	mm (in)	225mm ( 8.8")	205 mm ( 8.1")	215 mm ( 8.5")	215 mm ( 8.5")	205 mm ( 8.1")	
Min. Turning Circle	m (ft)	10.6 m (34.8 ft)	11.8m (38.8 ft)	10.6m (34.8 ft)	10.6m (34.8 ft)	11.8 m (38.8 ft)		
Kerb Weight	Manual Auto	kg (lbs)	1755 kg (3870 lbs) N/A	2040 kg (4497 lbs) 2065 kg (4550 lbs)	1760 kg (3880 lbs) 1790 kg (3950 lbs)	1960 kg (4329 lbs) 1990 kg (4399 lbs)	1990 kg (4399 lbs) 1985 kg (4376 lbs)	
Gross Vehicle Weight	kg (lbs)	2510 kg (5534 lbs)	2720 kg (5997 lbs)	2520 kg (5561 lbs)	2520 kg (5561 lbs)	2520 kg (5561 lbs)	2720 kg (5997 lbs)	
Towing Capacity	Braked Trailer Nose Weight	kg (lbs)	2800 kg (6171 lbs) 100 kg ( 220 lbs)	3300 kg (7273 lbs) 100 kg ( 220 lbs)	2800 kg (6171 lbs) 100 kg ( 220 lbs)	3300 kg (7273 lbs) 100 kg ( 220 lbs)	2800 kg (6171 lbs) 100 kg ( 220 lbs)	
Maximum Speed	Manual Auto	mph	91 94	109 94	109 106	116 113	116 113	
ENGINE	Engine	Type	4-Cylinder, in-line, SOHC, "Silent Shafts", Turbocharger with Intercooler, Oil Cooler, Exhaust Gas Recirculation		6-Cylinder, 60° V Configuration, SOHC, Roller Rocker Arms, 24 Valves, Oil Cooler, Catalytic Converter		6-Cylinder, 60° V Configuration, DOHC, Roller Rocker Arms, 24 Valves, Oil Cooler, Catalytic Converter	
	Displacement	cc	2477	2835	2477	2477	3497	
	Bore/Stroke	mm	91.1 x 95.0	95.0 x 100.0	91.1 x 76.0	91.1 x 76.0	93.0 x 85.8	
	Compression Ratio		21.0:1	21.0:1	21.0:1	21.0:1	9.5:1	
	Maximum Output	hp/rpm	98 @ 4200	121 @ 4000	178 @ 5500	178 @ 5500	205 @ 5000	
Maximum Torque	lb ft/rpm	177 @ 3000	215 @ 3000	189 @ 4500	188 @ 4500	221 @ 5000		
FUEL SYSTEM			Intercooler and Turbocharger with "intake" fuel injection through a Rotary VE type pump. Electronic "quick glow" start.		Electronically controlled Multi-Point Fuel Injection (EC-MULTI).			
	Fuel Tank Capacity	litres/imp.gals	75 (16.6)	92 (20.4)	75 (16.6)	92 (20.4)	75 (16.6)	
ELECTRICAL SYSTEM	Fuel Type		Diesel			Unleaded Petrol		
	Battery	V-AH	12-64	12-64	12-52	12-52	12-52	
	Alternator	Manual Auto	V-A V-A	12-65 12-75	12-75 12-90	12-75 12-90	12-80 12-90	
TRANSMISSION	Manual		Single dry plate clutch with hydraulic actuation.					
	Auto		Torque Converter with lock-up.					
	Gear Ratio	1st	N/A	3.952:1	3.918:1	3.918:1	3.952:1	
		2nd	2.261:1	2.238:1	2.261:1	2.261:1	2.238:1	
		3rd	1.395:1	1.398:1	1.395:1	1.395:1	1.398:1	
		4th	1.000:1	1.000:1	1.000:1	1.000:1	1.000:1	
		5th	0.829:1	0.761:1	0.829:1	0.829:1	0.819:1	
		Rev	3.925:1	3.353:1	3.925:1	3.353:1	3.353:1	
	Automatic Transmission	1st	N/A	2.804:1	2.804:1	2.804:1	2.804:1	
		2nd	N/A	1.531:1	1.531:1	1.531:1	1.531:1	
	3rd	N/A	1.000:1	1.000:1	1.000:1	1.000:1		
	4th	N/A	0.705:1	0.754:1	0.754:1	0.754:1		
	Rev	N/A	2.393:1	2.393:1	2.393:1	2.393:1		
Transfer	High	1.000:1	1.000:1	1.000:1	1.000:1	1.000:1		
Gear Ratio	Low	3.925:1	1.900:1	1.900:1	1.900:1	1.900:1		
Final Drive Ratio		4.875:1	4.900:1	4.875:1	4.875:1	4.836:1		
STEERING			Recirculating ball and nut with variable assist power steering.					
SUSPENSION	Front		Independent double wishbone, torsion bar, telescopic shock absorbers, anti-roll bar.					
	Rear		1-Piece axle, 3-link, progressive taper coil springs, telescopic shock absorbers, anti-roll bar.					
BRAKES	Front		Ventilated discs, 276 mm.					
	Rear		Solid discs with internal drum handbrake. Discs 315 mm.					
TYRES		265 / 70SR15	265 / 70SR15	265 / 70SR15	265 / 70SR15	265 / 70SR15	265 / 70SR15	
WHEELS			7H x 15" Alloy					
WARRANTY			3-Year Unlimited Mileage Warranty, Pan-European Recovery Service, 6-Year Anti-Corrosion Perforation Warranty					

# Shogun GLS Specifications

## PASSENGER CAR FUEL CONSUMPTION ORDER 1983 FUEL CONSUMPTION TESTS

### MANUAL

MODEL	URBAN CYCLE	CONSTANT 56mph	CONSTANT 75mph
3-DOOR 2.5 TURBO D	26.4 mpg (10.7/100kms)	30.7 mpg (9.2/100kms)	19.8 mpg (14.3/100kms)
5-DOOR 2.8 TURBO D	20.9 mpg (13.5/100kms)	30.3 mpg (9.4/100kms)	20.3 mpg (13.9/100kms)

### AUTOMATIC

MODEL	URBAN CYCLE	CONSTANT 56mph	CONSTANT 75mph
5-DOOR	21.2 mpg (13.3/100kms)	29.1mpg (9.7/100kms)	20.8 mpg (13.6/100kms)
2.8 TURBO D			

### MANUAL

MODEL	URBAN CYCLE	CONSTANT 56mph	CONSTANT 75mph
3-DOOR 5.0 PETROL	17.8 mpg (13.9/100kms)	26.6 mpg (10.6/100kms)	19.5 mpg (14.5/100kms)
5-DOOR 3.0 PETROL	17.4 mpg (16.2/100kms)	25.9 mpg (10.9/100kms)	19.2 mpg (14.7/100kms)

### AUTOMATIC

MODEL	URBAN CYCLE	CONSTANT 56mph	CONSTANT 75mph
3-DOOR 3.0 PETROL	18.5 mpg (13.9/100kms)	26.6 mpg (10.6/100kms)	19.5 mpg (14.5/100kms)
5-DOOR 3.0 PETROL	18.1 mpg (13.6/100kms)	26.2 mpg (10.9/100kms)	19.2 mpg (14.7/100kms)

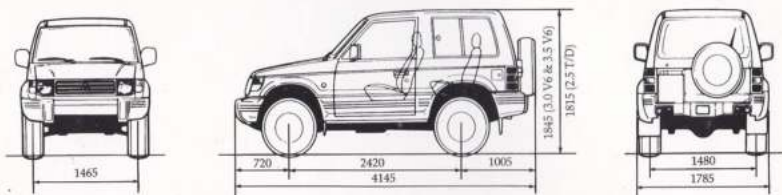
### MANUAL

MODEL	URBAN CYCLE	CONSTANT 56mph	CONSTANT 75mph
3-DOOR 3.5 PETROL	16.3 mpg (17.3/100kms)	26.2 mpg (10.6/100kms)	19.3 mpg (14.6/100kms)
5-DOOR 3.5 PETROL	15.9 mpg (17.4/100kms)	25.7 mpg (11.0/100kms)	19.2 mpg (14.7/100kms)

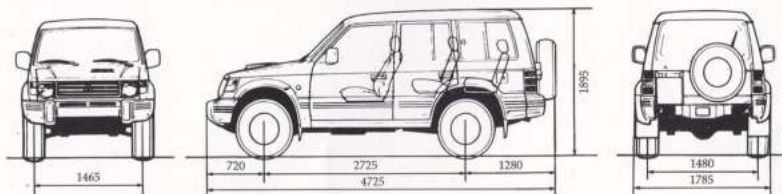
### AUTOMATIC

MODEL	URBAN CYCLE	CONSTANT 56mph	CONSTANT 75mph
3-DOOR 3.5 PETROL	16.8 mpg (16.8/100kms)	26.4 mpg (10.7/100kms)	19.3 mpg (14.6/100kms)
5-DOOR 3.5 PETROL	16.2 mpg (17.4/100kms)	25.9 mpg (10.9/100kms)	19.2 mpg (14.7/100kms)

## SHOGUN 3-DOOR



## SHOGUN 5-DOOR



All dimensions in mm



\*Specifications and Warranty conditions will vary for overseas markets. For Personal Export, NATO or Diplomatic Sales, please refer to the appropriate 'Export Department' as follows:  
UK: The Colt Car Company Ltd., Watermoor, Cirencester, Glos. GL7 1LF. Tel: Cirencester (STD 01285) 655777.  
Germany: The Colt Car Company Ltd., P.O. Box 1244, 41374 Bruggen, Germany. Tel: 02163 7036.

*The information in this brochure was correct at the date of going to press. The right is reserved to change specifications, features and prices without prior notice. To avoid any misunderstandings, your Mitsubishi Motors Dealer will advise of any alterations made since the date of issue of this brochure.*

Dealer name and address

 MITSUBISHI MOTORS	<b>Gallagher's of Sandycroft</b> Chester Road Sandycroft, Deeside Chwyd CH5 2QN Tel: 01244 534347 Fax: 01244 531927
---	--

04/95

HEAD OFFICE: The Colt Car Company Ltd.,  
Watermoor, Cirencester, Glos. GL7 1LF.  
Tel: Cirencester (STD 01285) 655777.  
Telex: 43452 (COLT CC). Fax: 01285 658026.

