

SHOGUN





Breeding with a clear purpose

In 1982 Mitsubishi Motors Corporation launched a brand new breed of car: a 4x4 which was tough enough to go where others feared to tread yet enjoyed the sort of sophisticated specification more normally associated with top end saloons. Thirty years later the Shogun is an icon – long-time, long-term favourite of those who live on the other side of the hill and make real pack-horse/tow-truck/mud-plugging demands of their vehicle on a regular basis. Of course the Shogun has changed considerably since the early days, but the principle has never varied: to this day it remains a dyed-in-the-wool, no-holds-barred, authentic off-roader, built to

outlast the opposition if not the owner. Indulgent yet practical it is superb value for money, unbeatable for loading, lugging and pulling heavy objects, and absolutely unstoppable in the wild. The technical superiority of its drivetrain, four-wheel independent suspension and stability and traction control systems have been honed in the extreme conditions of cross-country rallying and its phenomenal reliability has been proven, beyond a shadow of a doubt, time and time again. No less than seventy percent of all new Shoguns are bought by former Shogun owners – perhaps you should find out why.



It's more than a fashionista

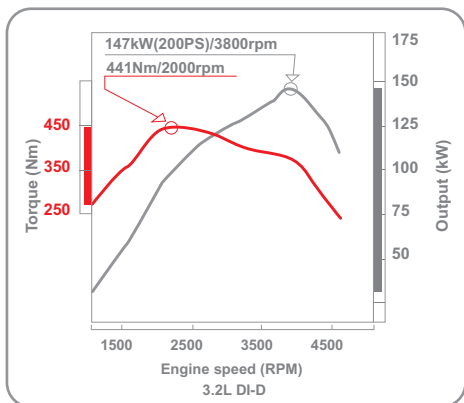
The Shogun has been credited with launching a whole new breed of vehicle, but whilst others have set their sights firmly on fashion it retains the bulging biceps and six-pack of a car honed for a purpose rather more demanding than the school run. And its honesty has won many fans: "After the first ten minutes I'm absolutely hooked... the Shogun rocks. I would have one, I really would"; and all this enthusiasm not from a 4x4 or towing publication but from Car magazine.



Perfect balance

This is the fourth generation of one of the world's favourite, most successful and most enduring 4x4s and it is the strongest, quietest, safest and smartest Shogun ever built. Striking just the right balance between discarding what should be discarded and stubbornly refusing to change what should remain, it both introduced new technologies and built upon breakthroughs from previous models, revising and improving them to create the ultimate, classic 4x4. For example, the Shogun's highly acclaimed, smart-thinking, INVECS-II automatic transmission, which emulates your own driving style with its gear changes, remained unchanged, but years of experience

resulted in many refinements to its bodyshell: the Shogun was the very first authentic off-roader to utilise a monocoque body and it is now stronger and stiffer than ever before, with better front:rear weight distribution, a lower centre of gravity, wider tracks and an improved all-wheel independent suspension system. And year on year the Shogun just gets better: tweaked, fettled and refined a little more. Without ever losing sight of its role in life it now feels more solid, more stable, quite simply more comfortable on the road. So bring on those lumps, bumps and potholes, those ever-winding B-roads, this Shogun has them beat!



Probably the biggest 4-cylinder engine in any production car, the Shogun's punchy, double overhead camshaft, 16-valve, turbocharged and intercooled, 3.2 litre, direct injection diesel engine has always provided masses of low-down torque yet never runs out of power in the mid-range. And now it is even better – much better. It is quieter, it is more economical, and it is cleaner: in fact, it is cleaner and more economical than any other authentic 4x4 you can buy. What's more, performance has been improved too, with increased power and torque resulting in an increase in the towing capacity and 0-62mph figures which have positively tumbled. It may never beat a hot hatch off the line but put pedal to the metal and this Shogun will fly when asked or cruise happily at high speeds on the motorway.



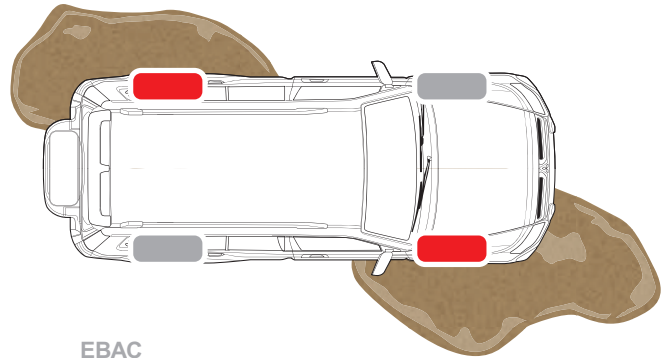


Extreme machine

Extreme off-road conditions mean water so deep and angles so crazy you would think no car could cope. But the Shogun can, and loves it. Indeed, it's likely that your nerve will run out long before this Shogun says enough!

A Full-on 4x4

The Shogun is, and always has been, a 4x4 specifically designed to climb, to tow and to carry heavy loads; to plough through snow and negotiate rocks, clamber slippery slopes, wade water and navigate deep, clinging mud. Of course, such mastery calls for some serious hardware so the Shogun's SS4-II drivetrain boasts not one, but three four-wheel drive modes. You can change from fuel-efficient two-wheel drive to 4H at speeds of up to 62 mph, ideal when road conditions deteriorate. When the going gets tougher simply lock the centre differential (4HLc) with power equally distributed between both axles, and for maximum off-road ability select 4LLc to virtually double effective engine braking in any gear. SS4-II works in conjunction with both Mitsubishi's highly acclaimed Active Stability and Traction Control system, ensuring optimum grip in all conditions, and EBAC which automatically engages in extreme downhill off-road situations. Of course, the Shogun's 4x4 abilities aren't confined to wild terrain – for many years they have also made it one of the world's favourite towcars and, with maximum torque available at just 2000 rpm, the Long Wheel Base model can pull its 3.5 tonne maximum capacity around with ease; when it comes to towing, quite simply, no car can beat it.



EBAC

Engine Brake Assist Control is activated only in the most extreme downhill situations when 4LLc has been selected and first gear is engaged, automatically taking over the braking as soon as it detects a loss of traction.



2H (2WD high range)

Ideal for cities and motorway driving, the rear wheel drive mode gives a quiet ride with smooth on-road performance.



4HLC (4WD high range with locked centre differential)

By equally distributing power between front and rear wheels, this mode helps maintain traction on low-grip surfaces.



4H (4WD high range)

With 4WD engaged, front/rear torque split shifts from 33:67 up to 50:50 for added traction and safety, especially when driving in adverse weather conditions or when towing.



4LLC (4WD low range with locked centre differential)

The lower gear ratio maximizes low-end power for climbing and enables controlled steep descents. It also helps you get out of sticky situations like deep mud, sand or snow.



Room with a view

Seated high above the traffic in the Shogun's seemingly giant-sized seats you feel comfortable, safe and slightly superior. But, despite the commanding view, the specially shaped side sill provides a moderate step-to-seat distance for easier access, whilst the monocoque body enables a lower floor and tailgate sill for easier loading. Furthermore, almost three decades' experience in 4x4 travel mean that the seats themselves are eminently suited to the task: for example, the driver's seating position is upright and slightly offset towards the door for optimum operation when driving at steep angles off-road, although height and lumbar adjusters in the heated, electrically operated, multi-way adjustable seats* enable drivers to fine-tune their comfort.

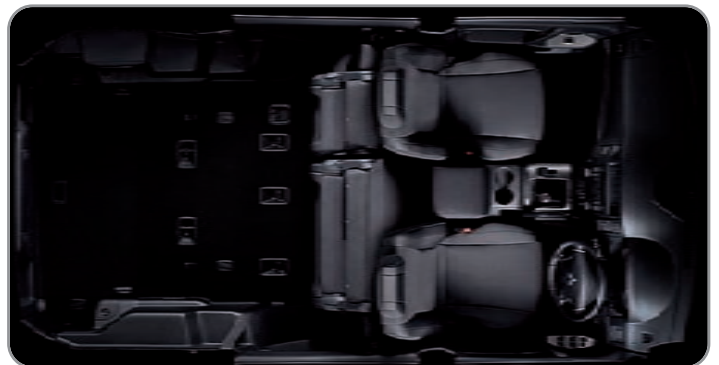
*Specifications vary by model – please refer to pages 25/26 for full details.



The Shogun's third row of seats folds away into the floor in seconds, or can be removed entirely leaving a flat loading base with a generous under-floor storage compartment. The headrests can be stored away under the seats for maximum room.



A genuine seven-seater, those in the third row enjoy a natural seating position and almost as much head and shoulder space as in the first two rows.



With the second row of seats tumbled and the third hidden the Shogun provides a cavernous cargo capacity, but the seats are so versatile that it will make a comfortable bed just as easily.



Comfort zone

Strong on the outside, soft within: superior comfort in a vehicle built to contend with the tougher side of life is fundamental to the Shogun philosophy. Everything is designed to make motoring more pleasurable wherever you go: the air conditioning is climate controlled, windows* and door mirrors are electric, and you have cruise control, satellite navigation, a superb music system with remote audio controls, Bluetooth connection, a reversing camera and leather upholstery as standard in most models. Much emphasis has been placed on sound absorption, ensuring a cabin which is quieter than ever before, whilst the materials used throughout are of soft-touch quality yet still tough enough to cope with this vehicle's eminently practical nature – after all, a Shogun is designed to carry the spoils of a good day's shooting, a couple of wet dogs and several hundredweight of fodder one day, then haul the family off skiing in the Alps on the next.

*Front only on SWB





Small talk

Attention to detail is a Mitsubishi hallmark and the Shogun is no exception. For example, on certain models their own air-conditioning controls put rear seat passengers in charge whilst the driver's night vision is preserved with an auto-dimming rear view mirror. The built-in Bluetooth employs steering-wheel mounted buttons for safer operation and voice recognition technology so that hands-free really means hands-free, and you'll never run out of space to store your contacts: a dual 'phone book function enables you to store the 'phone books from up to seven compatible handsets in addition to 32 names which can be stored in the vehicle's own 'phone book*. And throughout the range daytime comfort is improved by the use of solar control glass to reduce both ultra-violet and infra-red light, whilst low-level, LED lighting illuminates both the front and second row footwells whenever the ignition is on.

*Bluetooth specification on Warrior models differs.



PM 12:00

OUTSIDE TEMP 21°C

OUTSIDE TEMP



INFO

ADJ

MODE

AUDIO

+

VOL

-

PWR

SET

OPEN



6:11

INFO

NAVI

^

SCALE

v

MENU

ENT

(A73)STIRLING ROAD, AIRDRIE

Back

Mitsubishi Multi Communication System

ROCKFORD
ACOUSTIC DESIGN

AUTO

25.0



MODE

OFF



REAR

A superior sound system

The Shogun's premium 860w audio system* was specifically designed by Rockford Acoustic Design™ and includes an AM/FM receiver and CD player which is MP3 compatible. The home theatre sound system supports Dolby Pro Logic II, Dolby Digital and DTS Digital Sound Technologies for incomparable sound quality and a digital signal processor enables you to create the optimum acoustic characteristics to match your sound source and personal preference, all channelled through a 12-speaker system which includes four tweeters, three mid-range, four mid-base and a sub-woofer. Features also include speed-compensated volume, which automatically adjusts the sound level in accordance with vehicle speed, as well as a 'seat position selection' which enables you to tailor and aim the sound optimally according to the number of occupants.

*SG3 and SG4 models

Satellite navigation and more

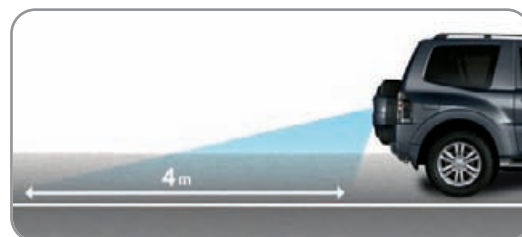
Mitsubishi's 40-gigabyte, hard disk drive satellite navigation system with colour, touch-screen display is, according to the usually acerbic Mr Clarkson, "brilliant". Location searches and route finding are ultra-fast and include up-to-date congestion and other relevant traffic information via the Traffic

Message Channel. The head unit supports all music sources, plays DVDs and incorporates the CDDB database and a hard disk-driven music catcher which can download and store up to 2500 music tracks.



DVD entertainment system

The headrest mounted DVD entertainment system, standard on the SG4 model, includes two wireless headphones.



Rear View Camera

A boon to parking, the Shogun's rear view camera is automatically engaged upon selecting reverse gear and the results displayed on the central screen.



SHOGUN

Living with the legend

Whether you opt for the five-seater Short Wheel Base or the full seven-seater Long Wheel Base the Shogun is a big vehicle with a big presence, yet it is easy to drive thanks to light, crisp and responsive power-assisted rack and pinion steering, easy to stop thanks to a hydro-boost power brake system, and easy to park thanks to reversing sensors*, a rear camera* and an amazingly tight turning circle. It's no lightweight city slicker which runs on fresh air, but on an average run it uses less fuel than any other authentic off-roader and its clean habits put it in the lowest VED and Showroom Tax bands of any such vehicle. Its servicing costs are surprising modest thanks to Mitsubishi's fixed price service plans, furthermore, it has an exceptional reputation for reliability and should be your faithful companion through fair weather and foul for many years to come. In fact, it's the perfect vehicle for people who really need a 4x4, so take the plunge, live with a Shogun for just a short while and you'll wonder how you ever lived without it.

*Specifications vary by model – please refer to pages 25/26 for full details.

Service with a smile

A Mitsubishi Service Plan, purchased at the same time as your Shogun, covers the first three scheduled services for a modest sum. It can be included in your vehicle's finance and transferred to a new owner when you sell.

Insurance and a little extra TLC

Mitsubishi Motors also offer superior insurance cover at a competitive price which is specifically designed for Mitsubishi vehicles and uses only genuine parts and approved repair centres. And to smooth your progress through an insurance claim, no matter which insurer you use, Mitsubishi First, our accident aftercare programme, handles everything on your behalf – no hassle, no claim forms, no running about, and absolutely no cost to you. It's all part of the special care you get with a Mitsubishi.

Warranty and MAP

All new Shoguns come with a comprehensive three-year unlimited mileage** warranty, throughout this period they also come with Mitsubishi Assistance Package (MAP). Breakdown, accident, theft, vandalism, whatever the reason you need homestart or roadside assistance you're covered 24/7 in over 30 countries throughout Europe.

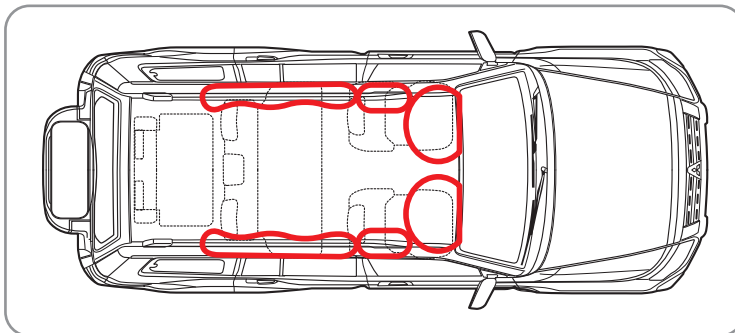
**100,000 miles on 4Work commercial models.





Safety to the fore

A Shogun doesn't simply appear tough and ultra-protective, it really is. That commanding seating position not only makes you feel safer, it actually gives you a clearer view of obstacles ahead. Combined with Mitsubishi's state-of-the-art stability and traction control system and superior brakes it gives you more chance to take effective evasive action. But if it does come to the crunch, the Shogun's hunky body doesn't just look imposing, it's designed to handle the impact of travelling over really rough terrain and hides a built-in frame which provides a particularly rigid structure, substantial reinforcement and strategically placed crumple zones to absorb impact energy and so keep occupants as safe as possible.



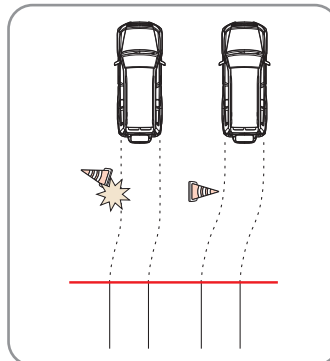
Airbags

Dual-stage front airbags, side and curtain* airbags provide ultimate protection for driver and passengers in the event of a collision.

*Not 4Work commercial models.

Multi-mode ABS with EBD

The Shogun's Anti-lock Braking System fitted with Electronic Brake-force Distribution ensures even, efficient distribution of braking power to each wheel regardless of how many people are travelling inside and whatever the cargo load and road surface. This provides you with maximised braking power and driving stability.



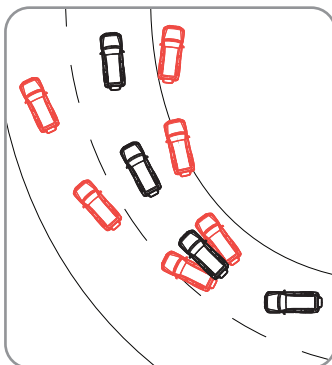
A Driver only with EBD



B With passengers and cargo with EBD



C With passengers and cargo without EBD



M-ASTC

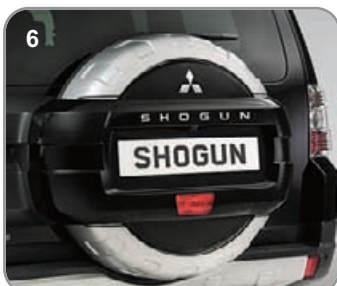
The Mitsubishi Active Stability and Traction Control system regulates braking force to each wheel during cornering to ensure excellent stability. It also maintains optimum traction in all conditions, both on and off-road. M-ASTC prevents tyre spin on slippery surfaces and minimises the risk of drift caused by over-accelerating in corners.

Accessory advantages

The Shogun is an exceptional vehicle, and never more so than in this, its fourth generation. Strength, build-quality and reliability, always synonymous with the Shogun, are further enhanced; specification is even more luxurious. But there are always ways to personalise your Shogun to make it fit your needs precisely. Indeed, there are over 100 factory-designed accessories available, all of which benefit from the same exceptional warranty as the vehicle itself if fitted when new. Visit www.mitsubishi-accessories.co.uk for details of them all and make the very most of your Shogun.



1. Side protection moulding
2. Door handle recess protectors
3. Rear bumper skid plate
4. Side step inlays
5. 20" Le Mans wheels
6. Spare wheel cover, single shell
7. Rear spoiler





- 8. Towbar, detachable type
- 9. Towbar, fixed type
- 10. Dog guard, LWB
- 11. Boot tray, low edges
- 12. Boot mat
- 13. Head rest DVD system

- 14. Boot tray, high edges
- 15. Textile mat set, LWB
- 16. Roof carrier
- 17. Sports pedal kit



Short Wheel Base SG2 3-Door (Manual/Automatic)



Key features

- Alarm and keyless entry • Climate control • FM/AM CD/Tuner with MP3 and 6 speakers • 18" alloy wheels • M-ASTC • Roof rails • Colour keyed heated door mirrors • Colour keyed outer door handles • ABS with EBD
- Multi-info display • Twin/Side/Curtain SRS airbags • ISOFix
- Electric front windows • Central locking • Tonneau cover
- Colour keyed bumpers • Electric folding door mirrors • Side steps
- Cruise control • Leather wrapped steering wheel • Heated front seats



Short Wheel Base Warrior 3-Door (Manual/Automatic)



Key features

Specification as SG2 plus:

- Leather upholstery • Front fog lamps • Privacy glass
- Chrome mirrors • Chrome door handles • Rear spoiler
- Chrome headlamp surrounds • Bluetooth hands-free kit
- Reversing camera • Touch-screen navigation system



Long Wheel Base SG2 5-Door (Manual/Automatic)



Key features

- Alarm and keyless entry • Climate control • FM/AM CD/Tuner with MP3 and 6 speakers • 18" alloy wheels • M-ASTC • Roof rails • Colour keyed heated door mirrors • Colour keyed outer door handles • ABS with EBD
- Multi-info display • Twin/Side/Curtain SRS airbags • ISOFix
- Electric windows • Central locking • Tonneau cover
- Colour keyed bumpers • Electric folding door mirrors • Side steps
- Cruise control • Leather wrapped steering wheel • Heated front seats



Long Wheel Base SG3 5-Door (Automatic)



Key features

Specification as SG2 plus:

- Electric sunroof
- 860w Rockford Acoustic Design™ premium audio system with 12 speakers
- HID headlamps
- Rear parking sensors
- Headlamp washers
- Rear air conditioning
- Rear spoiler
- 40 gigabyte HDD satellite navigation with 7" touch screen display
- Leather upholstery
- Front fog lamps
- Reversing camera
- Bluetooth hands-free kit
- Privacy glass



Long Wheel Base SG4 5-Door (Automatic)



Key features

Specification as SG3 plus:

- 20" alloy wheels
- Titanium mirrors
- Titanium door handles
- Titanium headlamp surrounds
- DVD entertainment system



4WORK

Commercial



SWB 3-Door/LWB 5-Door SG2 4Work (Manual/Automatic)



SWB 3-Door Warrior 4Work (Manual/Automatic)



Working hard in the commercial world

If you need a van which you can rely on day-in, day-out, a van which can operate in all road and weather conditions and can carry a payload of up to 765 kg in addition to towing up to 3,500 kg then the Shogun 4Work is the ideal answer. Fully compliant with Revenue and Customs build regulations, the Shogun 4Work combines all the tax advantages of a light commercial vehicle – substantially reduced Benefit in Kind liabilities for employees as well the potential to reclaim VAT for registered companies – with all the considerable ride and drive advantages of a Shogun. Given the Shogun's principal attributes – indulgent yet practical, superb value for money, unbeatable for loading and towing and virtually unstoppable in any terrain – it will come as little surprise to know that the Shogun has been chosen by public utilities, the Highways Agency and over half of this country's police forces. The Shogun 4Work short wheelbase is available with either manual or automatic transmission and in both Equippe and Warrior specifications. The Shogun 4Work long wheelbase is available with either manual or automatic transmission.

SWB/LWB SG2 4Work key features:

- Alarm and keyless entry • Climate control
- Multi-info display • ABS with EBD
- FM/AM CD/Tuner with MP3 and 6 speakers
- Side steps • 18" alloy wheels • M-ASTC
- Roof rails • Twin/Side SRS airbags
- Colour keyed heated door mirrors
- Colour keyed outer door handles
- Electric front windows
- Central locking • Cruise control
- Colour keyed bumpers
- Heated front seats
- Electric folding door mirrors
- Leather wrapped steering wheel

SWB Warrior 4Work key features:

Specification as SG2 plus:

- Leather upholstery • Front fog lamps
- Chrome mirrors • Chrome door handles
- Chrome headlamp surrounds
- Bluetooth hands-free kit • Reversing camera
- Touch-screen navigation system
- Tailgate privacy glass • Rear spoiler



Colour Options



Cool Silver (M)



Diamond Black (P)



Frost White (S)



Orient Red (M)



Granite Brown (M)



Model		Shogun SWB/LWB SG2	Shogun SWB Warrior	Shogun LWB SG3/SG4	
Exterior colour					
Cool Silver (M)	A31	■	■	■	—
Orient Red (M)	P26	■	■	■	—
Frost White (S)	W37	■	■	■	—
Diamond Black (P)	X37	■	■	■	—
Granite Brown (M)	C06	—	—	—	■
Seats		Fabric (Black)	Leather (Black)	Leather (Black)	Leather (Beige)
Door trim		Formed-type with Fabric Insert (Black)	Formed-type with Fabric Insert (Black)	Formed-type with Leather-look Insert (Black)	Formed-type with Leather-look Insert (Beige)
Headlining		Non-woven Fabric (Grey)	Non-woven Fabric (Grey)	Non-woven Fabric (Grey)	Non-woven Fabric (Beige)
Floor carpet		Needle Punch (Black)	Needle Punch (Black)	Needle Punch (Black)	Needle Punch (Black)

■ : Available M: Metallic* P: Pearlescent* S: Solid

*Metallic/pearlescent paint finish available at additional cost.

Colours and trims reproduced on these pages may vary from the actual colours due to the limitations of the printing process used.

Technical Specifications

Model		Shogun SWB Manual	Shogun SWB Automatic	Shogun LWB Manual	Shogun LWB Automatic
Engine					
Engine type		In-line 4-cylinder 16-valve DOHC diesel engine, turbocharger with intercooler			
Fuel system		Electronically controlled Common Rail Direct Injection Diesel (DI-DC)			
Emissions control system		Oxidation catalytic converter with closed flow Diesel Particulate Filter		Oxidation catalytic converter with closed flow Diesel Particulate Filter	
Displacement	cc	3200	3200	3200	3200
Bore x stroke	mm	98.5 x 105.0	98.5 x 105.0	98.5 x 105.0	98.5 x 105.0
Compression ratio		16.0	16.0	16.0	16.0
Max. output	kw (bhp) at rpm	147 (197)/3800	147 (197)/3800	147 (197)/3800	147 (197)/3800
Max. torque	Nm (lb.ft) at rpm	441 (325)/2000	441 (325)/2000	441 (325)/2000	441 (325)/2000
Performance/Fuel Consumption/Emissions					
Maximum speed	mph (kph)	111 (180)	111 (180)	111 (180)	111 (180)
Acceleration 0-62 mph	secs	9.7	10.4	10.5	11.1
Fuel type		Diesel	Diesel	Diesel	Diesel
Fuel consumption	Urban	9.5 (29.7)	10.0 (28.2)	9.6 (29.4)	10.1 (28.0)
lts/100km (mpg)	Extra urban mode	6.9 (40.9)	7.2 (39.2)	7.2 (39.2)	7.5 (37.7)
	Combined mode	7.8 (36.2)	8.2 (34.4)	8.1 (34.9)	8.5 (33.2)
CO ₂ emissions	g/km	207	216	213	224
Emissions compliance		EU-5	EU-5	EU-5	EU-5
Suspension/Steering					
Front axle		Independent double wishbone, coil springs, telescopic shock absorbers, stabiliser bar			
Rear axle		Independent multi-link, coil springs, telescopic shock absorbers, stabiliser bar			
Brakes		Multi-mode Anti-lock Braking System with Electronic Brakeforce Distribution			
	Front	290mm (11.4") ventilated disc (2-pot)		332mm (13.1") ventilated disc (4-pot)	
	Rear	300mm (11.8") ventilated disc		332mm (13.1") ventilated disc	
Steering		Rack and pinion, power-assisted			
Min. turning circle	m (ft)	10.6 (34.8)	10.6 (34.8)	11.4 (37.4)	11.4 (37.4)
Wheels/Tyres		18" x 7.5JJ alloy/265/60R18 110H (LWB SG4: 20" x 8.5JJ alloy/265/50R20 111W)			
Driveline/Transmission					
Type		Super Select (SS4-II) 4WD system with electronic transfer shift and Mitsubishi Active Stability & Traction Control System			
Clutch		Hydraulic action	Torque converter	Hydraulic action	Torque converter
Transmission		5-speed	5-speed INVECS-II with Sports Mode	5-speed	5-speed INVECS-II with Sports Mode
Gear ratios	1st	4.234	3.520	4.234	3.520
	2nd	2.238	2.042	2.238	2.042
	3rd	1.398	1.400	1.398	1.400
	4th	1.000	1.000	1.000	1.000
	5th	0.760	0.716	0.760	0.716
	Reverse	3.553	3.224	3.553	3.224
Transfer gear ratio	High	1.000	1.000	1.000	1.000
	Low	1.900	1.900	1.900	1.900
Final gear ratio		3.692	3.692	3.692	3.692
Dimensions					
Cargo room l x w x h	mm	840 x 1395 x 1105	840 x 1395 x 1105	1430 x 1395 x 1110	1430 x 1395 x 1110
Cargo capacity max.	lts VDA (cu.ft.)	1120 (39.5)	1120 (39.5)	1790 (63.2)	1790 (63.2)
Exterior l x w x h	mm	4385 x 1875 x 1870	4385 x 1875 x 1870	4900 x 1875 x 1890	4900 x 1875 x 1890
Ground clearance (unladen)	mm	220	220	220	220
Track	Front	1560	1560	1570	1570
	Rear	1560	1560	1570	1570
Wheelbase	mm	2545	2545	2780	2780
Approach angle	degrees	34.6	34.6	34.5	34.5
Departure angle	degrees	34.3	34.3	24.5	24.5
Ramp breakover	degrees	24.1	24.1	22.2	22.2
Weights/Volumes					
Seating capacity		5	5	7	7
Fuel tank capacity	lts (imp.galls)	69 (15.1)	69 (15.1)	88 (19.3)	88 (19.3)
Gross vehicle weight	kg (lbs)	2665 (5875)	2665 (5875)	3030 (6680)	3030 (6680)
Kerb weight – SG2/Warrior	kg (lbs)	2095 (4618)	2085 (4596)	2275 (5015)	2265 (4993)
	SG3/SG4	–	–	2300 (5070)	2300 (5070)
Towing capacity	Braked	3000 (6613)	3000 (6613)	3500 (7716)	3500 (7716)
	Unbraked	750 (1653)	750 (1653)	750 (1653)	750 (1653)
Trailer nose weight	kg (lbs)	115 (254)	115 (254)	135 (298)	135 (298)
Roof loading capacity	kg (lbs)	100 (220)	100 (220)	100 (220)	100 (220)
Servicing/Insurance/Warranty					
Service intervals		Every 9,000 miles or 12 months, whichever occurs first		Every 9,000 miles or 12 months, whichever occurs first	
Insurance group		SG2: 29 SG3: 30 Warrior & SG4: 31			
Warranty		3 year unlimited mileage warranty, 12 year anti-corrosion perforation warranty, 3 year pan-European roadside, home and accident assistance			

Standard and Optional Equipment

Model	Shogun SWB/LWB SG2	Shogun SWB Warrior	Shogun LWB SG3	Shogun LWB SG4
Security and Safety Features				
Security				
Engine immobiliser and alarm system	■	■	■	■
Locking wheel nuts	■	■	■	■
Luggage cover, rigid type	SWB	■	–	–
Luggage cover, retractable	LWB	–	■	■
Visible VIN	■	■	■	■
Safety				
ABS with EBD	■	■	■	■
Airbags SRS, front, front side and curtain	■	■	■	■
Airbag SRS, front passenger's deactivation switch	■	■	■	■
Child proof rear door locks	LWB	–	■	■
Electric windows with anti-trapping function	■	■	■	■
ISOFix child seat mountings, 2nd row	■	■	■	■
Mitsubishi Active Stability & Traction Control (M-ASTC)	■	■	■	■
Rear parking sensors	DFO	DFO	■	■
Rear view mirror, auto-dimming	–	–	■	■
Reversing camera	–	■	■	■
Seatbelts, 3-point ELR, all seats	■	■	■	■
Exterior features				
Styling				
18" alloy wheels	■	■	■	–
20" alloy wheels	DFO	DFO	DFO	■
Bumpers, colour keyed	■	■	■	■
Door mirrors and handles, colour-keyed	■	–	■	–
Door mirrors, handles and headlamp surrounds, chrome finish	DFO	■	DFO	–
Door mirrors, handles and headlamp surrounds, titanium finish	DFO	–	DFO	■
Front grille, black with chrome trim	■	■	■	■
Metallic or pearlescent paint finish	□	□	□	□
Privacy glass, rear side windows and tailgate window	□	■	■	■
Rear bumper under panel, silver	■	■	■	■
Roof rails, black	■	■	■	■
Roof spoiler, colour keyed	DFO	■	■	■
Side steps, silver with black insert	■	■	■	■
Spare wheel, alloy, central tailgate-mounted	■	■	■	■
Spare wheel, temporary use	–	–	–	■
Spare wheel partial cover, rigid type, colour-keyed garnish	■	■	■	■
Wheelarch and lower door mouldings, colour-keyed	■	■	■	■
Windscreen shade band	■	■	■	■
Functional				
Automatic lights on/off	–	–	■	■
Central door locking including tailgate, keyless entry	■	■	■	■
Door mirrors, electric/heated with folding function	■	■	■	■
Door mirrors with side indicators and approach lamps	■	■	■	■
Fog lamps, reflector type, front	DFO	■	■	■
HID headlamps with auto-levelling and washers	–	–	■	■
Rear quarter windows, 'butterfly' type	■	■	■	■
Wipers, with automatic rain sensor, front	–	–	■	■
Wipers, variable intermittent with washer, front	■	■	■	■
Wiper, intermittent with washer, rear	■	■	■	■
Interior features				
Audio/Navigation/Communications				
Aerial, element type, in window	■	■	■	■
Bluetooth hands-free telephone kit	DFO	■	■	■
HDD 40GB navigation/music server with touch-screen display and USB port	–	–	■	■
iPod/MP3 AUX input port	■	■	■	■
Kenwood navigation system with touch-screen and direct iPod control	–	■	–	–
Premium 860W Rockford audio system with 12 speakers	–	–	■	■
Radio/CD/MP3 player with 6 speakers	■	■	–	–
Rear seat DVD entertainment system (front headrest mounted)	–	–	–	■

■ : Standard □ : Option at additional cost – : Not available DFO : Dealer Fit Option at additional cost

Standard and Optional Equipment

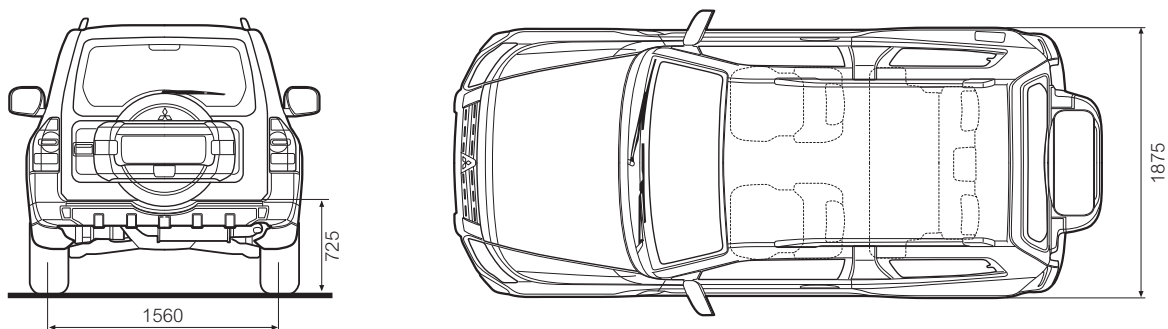
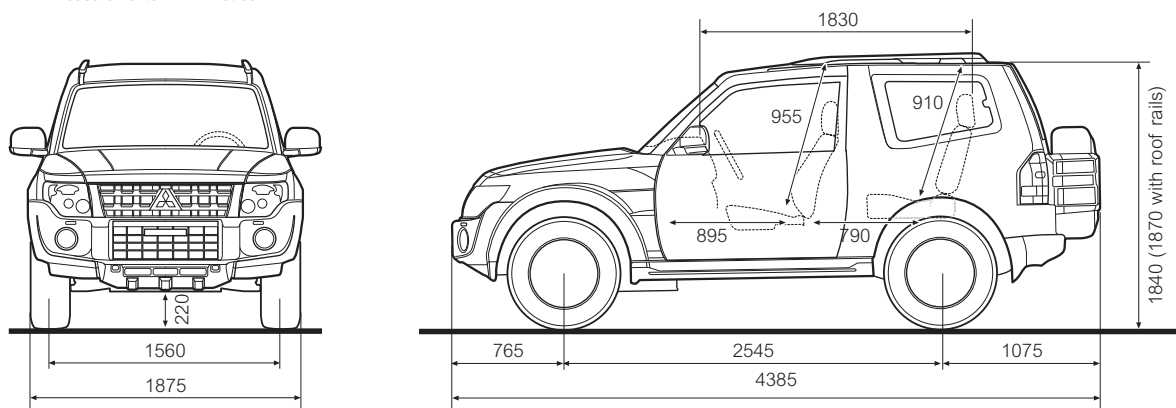
Model	Shogun SWB/LWB SG2	Shogun SWB Warrior	Shogun LWB SG3	Shogun LWB SG4
Interior features				
Styling				
Door inner handles, chrome	–	–	■	■
Electric window switch panels, silver	■	■	■	■
Gear/transfer shift knobs and handbrake lever, leather-wrapped	■	■	■	■
Interior trim panels, metallic with aluminium print finish	■	■	–	–
Interior trim panels, metallic with wood grain print finish	–	–	■	■
Seat trim, fabric	■	–	–	–
Seat trim, leather, black	–	■	■	■
Steering wheel, 4-spoke, leather-wrapped with remote audio and cruise control	■	■	■	■
Convenience				
Access support grips, front	■	■	■	■
Access support grips, rear	LWB	–	■	■
Air conditioning, climate control	■	■	■	■
Cabin air filter, anti-odour	■	■	■	■
Cruise control	■	■	■	■
Cargo room underfloor compartment	■	■	■	■
Floor console box with slide-adjustable centre armrest and storage boxes	■	■	■	■
Front seat backrest pockets	■	■	■	■
Glove box, lockable and illuminated	■	■	■	■
Illuminated ignition keyhole with time delay	■	■	■	■
Retractable assist grip x 4	SWB	■	–	–
Retractable assist grip x 6	LWB	–	■	■
Rear seat overhead ventilation outlets	–	–	■	■
Rear air conditioning with separate control panel	–	–	■	■
Storage box in tailgate trim	■	■	■	■
Sunglasses pocket, overhead type	■	■	–	–
Sunvisors, driver's & passenger's with vanity mirrors	■	■	–	–
Sunvisors, driver's & passenger's, extendable with illuminated vanity mirrors	–	–	■	■
Functional				
Accessory socket x 3	■	■	■	■
Door mirrors, electric heated with folding function	■	■	■	■
Electric sunroof, glass tilt/slide	–	–	■	■
Electric windows with one-touch open/close, front	■	■	■	■
Electric windows with one-touch open/close, rear	LWB	–	■	■
Headlamp levelling, manual control	■	■	–	–
Headlamp levelling, automatic control	–	–	■	■
Mitsubishi Multi Communication System with touch screen display	–	–	■	■
Multi-info display	■	■	■	■
Steering wheel, tilt adjustable	■	■	■	■
Tailgate strut, oil damper type	■	■	■	■
Lighting				
Door courtesy lamps, front	■	■	■	■
Door courtesy lamps, rear	LWB	–	■	■
Interior lamp with map lamps, front	■	■	■	■
LED down-light, centre console	■	■	■	■
LED footwell lamps, front and second row seats	■	■	■	■
Luggage/cargo area lamp	■	■	■	■
Personal lamps, 2nd row	■	■	■	■
Seats				
Armrest, front – centre with sliding adjustment	■	■	■	■
Armrest, 2nd row – centre with built-in cup holders	LWB	–	■	■
Armrests, 2nd row – side with built-in cup holders	SWB	■	–	–
Head restraints, front – height and tilt adjustable x 2	■	■	■	■
Head restraints, 2nd row – height adjustable x 3	■	■	■	■
Head restraints, 3rd row – detachable x 2	LWB	–	■	■
Seats, front – driver's height adjuster	■	■	■	■
Seats, front – driver's lumbar adjuster	–	–	■	■
Seats, front – 2 x heated seats	■	■	■	■
Seats, front – driver's 5-way and passenger's 4-way power seats	–	–	■	■
Seats, front – fully flat folding	■	■	■	■
Seats, front – seatbelt height adjustment	■	■	■	■
Seats, front – passenger's side 'walk-in' system	SWB	■	–	–
Seats, 2nd row – 60/40 split/folding, tip-up	■	■	■	■
Seats, 2nd row – reclining, fully flat folding	■	■	■	■
Seats, 3rd row – reclining, fold-away/removable bench type	LWB	–	■	■

■ : Standard □ : Option at additional cost – : Not available DFO : Dealer Fit Option at additional cost

Dimensional Views

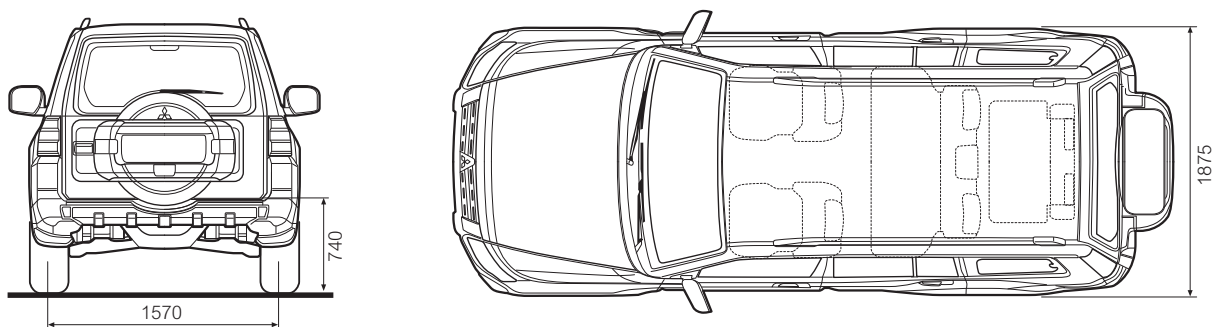
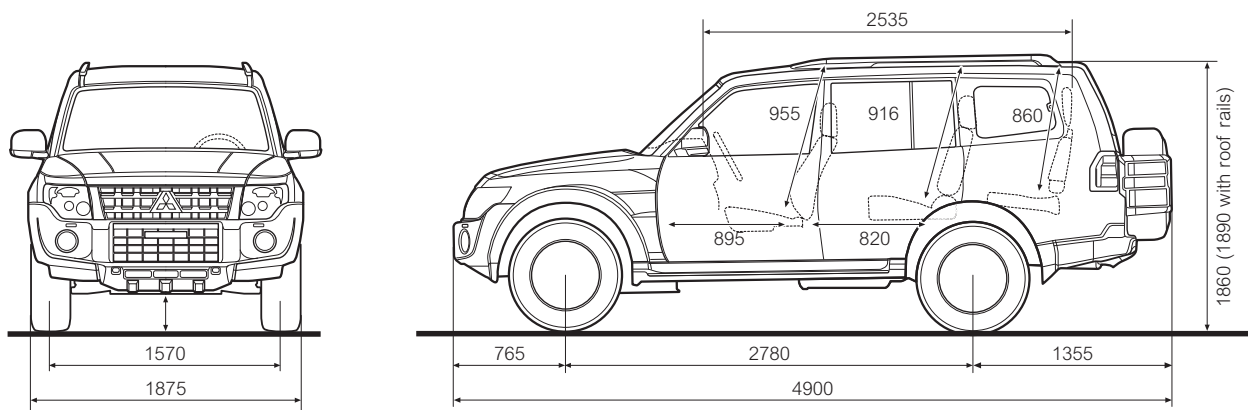
Short Wheel Base 3-Door

All measurements in millimetres.



Long Wheel Base 5-Door

All measurements in millimetres.





To see the Shogun
in action scan here



To find out about our
special offers scan here

MITSUBISHI MOTORS RECYCLING

We all have a duty to protect the environment. After a long working life we will take back any Mitsubishi Motors vehicle originally sold by The Colt Car Company Ltd. and recycle it in an environmentally friendly manner in accordance with the EU Directive on End-of-Life Vehicles and any applicable national statutory provisions.

All Mitsubishi Motors vehicles sold by The Colt Car Company Ltd., irrespective of date of sale, will be taken back free of charge from the last owner, at one of the designated take-back points, provided the vehicle contains all major components and is free of waste.

For further information please visit www.cartakeback.com, email info@cartakeback.com or call the Cartakeback info-line on 0845 257 32 33.

The specification of the vehicles illustrated in this publication may not be applicable to the UK market, furthermore some vehicle illustrations may include accessory items which are not part of UK standard specification. However, every effort has been made to ensure that the written information was accurate, up-to-date and consistent with UK specification at the time of going to press. The right is reserved to change specification, features and prices without prior notice. To avoid any misunderstandings, your Mitsubishi Motors dealer will advise of any alterations made since the date of issue of this brochure. No part of this publication may be reproduced in any form or by any means, without the prior written permission of The Colt Car Company Limited.

Head Office: The Colt Car Company Ltd., Watermoor, Cirencester, Glos. GL7 1LF

Website: www.mitsubishi-cars.co.uk



This brochure has been produced by an ISO14001 environmentally accredited printer where all processes are managed and materials recycled. The paper used to produce this brochure is from sustainable forests, chlorine free and from an ISO14001 accredited mill. This brochure is fully recyclable.