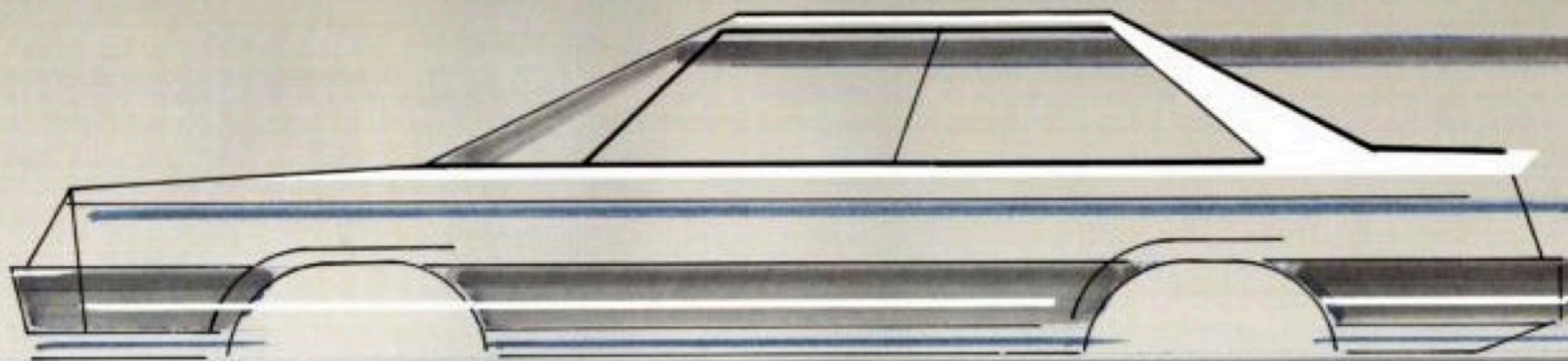
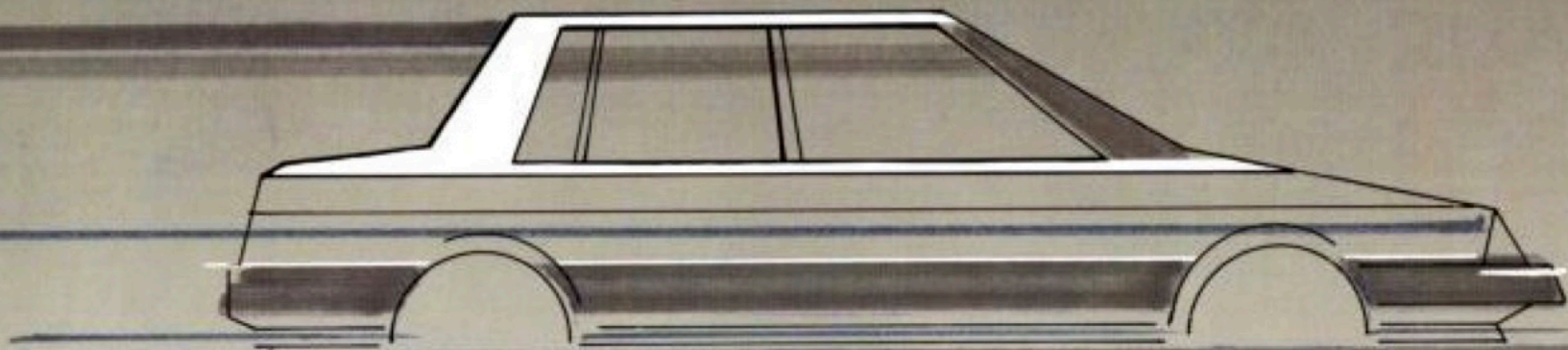


NISSAN
BUILDING IN BRITAIN



NISSAN CARS 1985

NISSAN IN BRITAIN

Nissan have sold more than one million cars in Britain, and are continuing the success story of the past fourteen years. Exciting new and improved models keep the Nissan range to the forefront in styling and technology. Success has meant expansion and growth, and now the construction of a U.K. Nissan manufacturing plant has begun. This will provide the basis for further growth and increased sales.

Nissan U.K. Ltd. (formerly known as Datsun U.K. Ltd.) was founded as an independent company in 1971 to market the then little-known Datsun cars from Japan. The rate of success was spectacular and within three years Nissan had become not only the most successful Japanese marque in Britain, but also outsold all other traditional motor vehicle importers. This position has been unchallenged for more than a decade during which Nissan's reputation for value and reliability has been consolidated.

The Nissan House headquarters complex at Worthing in Sussex, carrying £30 million of parts, is the focal point of a vast integrated and computerised operation. The extensive network of 435 dealers has been established to provide sales and service facilities in all parts of the country, and is supported by modern port facilities at both Bristol and Middlesbrough.

A sophisticated computer system enables all Nissan dealers to provide a level

of service bettered by none. The system allows any variant of any model, or a replacement part for a Nissan vehicle of any age, to be located by your local dealer using the 'Link-line' 24 hours a day, seven days a week. The operation is designed so that you are looked after as an individual and your particular needs met wherever possible.

In an increasingly sophisticated market Nissan have more than matched the pace of advance and now offer the most extensive range of cars ever. With ten separate model ranges offering a wide variation in body style, engine size, and transmission there is something in the line-up to suit all tastes and requirements. Look at the remarkably economical, yet spacious, Micra then the stylish and comfortable Cherry and Sunny models and the uniquely versatile Prairie. The range continues with the 4 or 5 door Stanza, Bluebird saloon and estate and the executive-style Laurel to the ultimate in luxury, the 300C with a huge list of "extras" fitted as standard. For the specialist driver there's the world's most popular sports car, the 300ZX, or the highly acclaimed Silvia ZX, and for rugged go-anywhere driving the Patrol Hardtop and Estate meet the bill.

A quick glance will show that there is a model to suit and a test drive at your local Nissan dealer will convince you of the pleasures of Nissan ownership.





Micra GL

Nissan Micra

The new Nissan Micra is an outstanding front wheel drive economy car giving up to 67.3 mpg – the BEST fuel economy of any car in its class!

The Micra has a smooth, aerodynamic body, constructed using the latest weight-saving, high tensile steel. A new 988 cc aluminium alloy engine is coupled to an advanced overdrive ratio gearbox. Rack and pinion steering gives positive control of the car at speed and is light for easy parking. Independent front suspension and a four-link coil rear suspension system gives enjoyable handling and positive road holding.

Inside, the Micra has more headroom, legroom and shoulder width to enable you and your passengers to travel in complete comfort. The one-piece tailgate extends from the roof line to the flat floor of the luggage area, so that heavy objects can be loaded or unloaded easily.

The Micra is fully equipped. On DX models there's a LW/MW radio, digital quartz clock, reclining front seats with head restraints, intermittent wipers, halogen headlamps, heated rear window, lockable fuel filler lid and a maintenance-free battery. On GL models you'll find luxurious velour upholstery, fitted carpets, split rear seats, two door mirrors adjustable from inside the car, interior tailgate release, tinted glass and a laminated windscreen.

The new Nissan Micra – programmed for economy with big car comfort and refinement built in as standard.



	1.0 DX	1.0GL	1.0 GL AUTO
ENGINE:	All models, cross-flow, 4 cylinder in-line, overhead camshaft, water cooled		
Type	All models 988cc		
Capacity (cc)	55-6000	55-6000	
Max power (bhp/rpm) (EEC)	53.5-3600	55-7000	
Max torque (kg-m) (EEC)	9.5-1	13.9-1	
Compression ratio	9.5:1		
Carburettor	All models dual barrel, down-draught, economiser choke		
TRANSMISSION:	All models dry sump, plain shaft, pinion spring		
Type	Manual 4 speed 41 synchro mesh	Manual 5 speed 41 synchro mesh	3 speed fully automatic
Gear ratios: 1st	3.412	3.412	2.825
2nd	1.998	1.868	1.942
3rd	1.258	1.208	1.000
4th	0.901	0.921	—
5th	—	0.721	—
Reverse	3.385	3.385	2.364
Clutch	All models dry sump, plain shaft, pinion spring		
STEERING:	All models rack and pinion		
SUSPENSION:	All models front independent coil spring, rear four-link coil spring		
BRAKES:	All models disc front, drum rear, power assisted		
WHEELS/TYRES:	All models 6J x 12 inch/145 SR 12 radial		
KERB WEIGHT (kg):	1389	1420	1489
GOVERNMENT FUEL CONSUMPTION TESTS - MPG (litres/100 Kilometres)			
Constant (Mph) (30km/h)	67.7 (4.9)	67.3 (4.7)	62.3 (5.4)
Town (Mph) Cycle	48.3 (6.1)	47.9 (6.6)	41.5 (6.8)
Constant (Mph) (120km/h)	40.9 (6.9)	46.3 (6.1)	37.7 (7.3)



Nissan Cherry Range

The Cherry range of front wheel drive hatchbacks is one of the most comprehensive available, with seven different models, from a five door family car with outstanding space and economy, to the high-performance Cherry Turbo ZX with a fuel injected 1.5 litre turbocharged engine that gives exceptional acceleration and a top speed of around 115 mph.

There are three and five door hatchbacks, manual or automatic transmission, and 1.3 litre or 1.5 litre overhead camshaft engines.

Every Cherry includes light touch rack and pinion steering, fully independent suspension, overdrive ratio transmission and a power-assisted braking system. GS and SGL models have rear wash/wipe, tinted glass, quartz clock, three-speed wipers with intermittent and wash/wipe, halogen headlamps, integral rear fog and reversing lights, hinged luggage area cover, two door mirrors and much more. Nissan's design team have developed the Cherry to be wind-cheating on the outside, and roomy inside. There's ample legroom for the tallest person, good luggage space with the bonus of split rear seats on some models, and a full level of equipment. Turbo ZX models have special sports type bucket seats, together with alloy wheels, a spoiler, sports steering wheel, rev counter, etc.

The Cherrys have all the style, performance, comfort and equipment you could want with lightweight fuel efficient engines that give exceptional petrol economy of up to 56.5 m.p.g.





	3-door 1.3 GS	5-door 1.3 GS	3-door 1.3 SGL	5-door 1.3 SGL	3/5 dr 1.3 GS Auto	3-door 1.3 Turbo ZX
ENGINE:						
Type	Crossflow 4 cylinder in-line, overhead camshaft, water-cooled					Crossflow 4 cyl. DHC Turbo
Capacity (cc)	1275					1400
Max power (hp/rpm) (DIN)	60/5000					114/5000
Max Torque (lb/ft) (DIN)	14/3000					17.5/2500
Carburettor	Dual barrel, overhead					Electronic fuel injection
TRANSMISSION:						
Type	4 speed manual, all synchromesh		5 speed manual, all synchromesh		3 speed fully automatic	5 speed manual, all synchromesh
Gear ratios:	1st	2.333	1st	2.333	2.400	2.333
	2nd	1.652	2nd	1.652	1.543	1.900
	3rd	1.286	3rd	1.286	1.300	1.286
	4th	0.900	4th	0.900	—	0.900
	5th	—	5th	0.723	—	0.723
Reverse	3.417	—	3.417	—	2.364	3.417
STEERING:						All models rack and pinion
SUSPENSION:	All models fully independent. Front MacPherson strut, rear trailing arm					
BRAKES:	All models disc front, drum rear, power assisted. Automatic rear shock absorber					
WHEELS/TYRES:	4 x 12 steel-cyled 135SR - 13 radial					5J alloy 175 - 13HR 13 radial
KERB WEIGHT (kg):	1121	1192	1153	1175	1192 / 1241	1175
TOWING CAPACITY (with brakes) kg:	1764	1764	1764	1764	1303 / 1543	2200
FUEL TANK CAPACITY (imp. galls):	All models 11.0					
GOVERNMENT FUEL CONSUMPTION TESTS - MPG (l/100 kilometres)						
Constant 90 mph (145km/h)	47.1 (6.0)	47.1 (6.0)	48.7 (5.9)	48.7 (5.9)	41.5 (6.5)	52.4 (5.0)
Urban Driving Cycle	36.7 (7.7)	36.0 (8.3)	36.7 (7.7)	36.7 (7.7)	34.3 (8.3)	34.9 (8.1)
Constant 75 mph (120km/h)	34.0 (8.3)	34.0 (8.3)	34.0 (8.3)	34.0 (8.3)	31.4 (9.0)	34.4 (8.2)

Nissan Sunny Saloons

There's a choice of eight models in the Sunny range – five saloons, two estate cars and a very smart and attractive coupe. The saloons are available as two-door L and four-door L or GS models with the 1.3 litre engine, and four-door 1.5 litre SGL versions with the option of manual or automatic transmission.

Lightweight engines for all models are of single overhead camshaft, crossflow design. All the saloons now feature a smooth-as-butter four or five-speed gearbox with overdrive gearing for relaxed high-speed cruising with exceptional economy.

The rack and pinion steering system features a specially designed coupling which gives the Sunny a turning circle of just 29.5 feet. The latest 'fist-type' front disc brakes, a feature of our 150 mph 300 ZX sports car, give the Sunny reassuring stopping power with just the right amount of feel.

The light, airy interior offers an extremely high level of comfort and refinement. There's more length, width and headroom for you and your passengers to relax in thickly padded, cloth* upholstered seats. Front seats have adjustable cloth covered head restraints*, and on the two door saloon there's a passenger seat 'walk-in' device for easy access to and from the rear seats. An advanced heating and 'fast-flow' ventilation system ensures comfort in all weather conditions. On GS and SGL models equipment includes interior boot release, push button MW/LW radio, quartz clock, tinted glass, two speed wipers with



Coupe & Estates

intermittent wipe, and much more.

The Sunny coupe is a stylish, sporting hatchback with brisk acceleration and a top speed of up to 102 mph. A precise five-speed gearbox is a joy to use and with overdrive on fourth and fifth you can cruise along the motorway at 70 mph in top with the engine speed at a mere 3000 rpm.

The Sunny coupe is a comfortable four-seater. There's a passenger seat 'walk-in' device with a control for rear passengers, allowing easy access to and from the rear seats. Another convenient feature is a remote control rear side window opener, operated from between the front seats.

Rear seats can be folded individually to turn the coupe into a spacious, versatile load carrier. Standard equipment includes rev. counter, interior tailgate and fuel lid release, rear wash/wipe, 'lights-on' warning buzzer, illuminated cigar lighter, intermittent wipers, luggage area lamp, warning lights for handbrake on, tail lamp failure, low fuel and door ajar and much more.

The Sunny estate cars are designed for the motorist who wants performance, economy, comfort and refinement with versatile load carrying capacity. The 1.3 DX is the really practical member of the Sunny Estate family. It's high roof design allows maximum room for loading luggage or equipment. With the rear seat folded you have a really useful load area up to 58 inches long, 52 inches wide and 35 inches high. Inside the 1.3 DX Estate you'll find a new style vinyl trim that's attractive to the eye, yet tough and durable enough to take a hard working life in its stride. The

1.5 SGL Estate has a stylish hatchback design and is available with 5-speed manual or 3-speed fully automatic transmission. It gives you a high standard of luxury with cloth upholstered seats, deep pile fitted carpets and a comprehensive level of equipment including remote control rear side window opener, luggage area lamp, interior tailgate and fuel lid release, remote control door mirrors, rev. counter, tinted glass, quartz clock, warning light display and more.

Rear seats fold individually to cater for awkward equipment or with both seats folded you have a spacious fully carpeted luggage area.

*Except L model



	2 door Saloon	4 door Saloon	Coupe	Estates				
ENGINE:		All models 4 cylinder transverse OHV, water cooled						
Type	1270	1270 or 1499	1499	1270 or 1499				
Capacity (cc)	90/5600	90/5600 or 75/5600	75/5600	90/5600 or 75/5600				
Max power (hp/rpm (DIN))	73.5/3000	73.5/3000 or 89.1/2800	89.1/2800	73.5/3000 or 89.1/2800				
Max torque (lb/ft (DIN))	9.0/1	9.0/1 or 9.8/1	9.8/1	9.0/1 or 9.8/1				
Compressor (psi)								
Carburettor	All models single downdraft, fuel injection							
TRANSMISSION	4 speed manual, all synchromesh	* 5 speed man. all synchromesh	3 speed auto (1.5)	5 speed manual, all synchromesh				
Type				4 speed manual, all synchromesh				
Gear ratios: 1st	3.333	3.333	2.826	3.333				
2nd	1.955	1.955	1.543	1.955				
3rd	1.286	1.286	1.000	1.286				
4th	0.902	0.902	0.733	0.902				
5th	—	0.733	—	0.733				
Reverse	3.417	3.417	2.364	3.417				
Clutch	All models dry single plate, diaphragm spring							
STEERING:	All models rack and pinion							
SUSPENSION:	Fully independent. Front MacPherson strut coil spring, rear trailing arm coil spring (rear leaf spring on DX Estates)							
BRAKES:	All models power assisted. Disc front, drum rear. Automatic rear brake adjuster							
WHEELS/TYRES:	All models 4 x 13 steel 150SR x 13 radials							
KERB WEIGHT (lbs)	1742	1769 (1.3 DL) 1802 (1.5 SGL) 1841 (SGL Auto)	1696	1895 (DX) 1951 (SGL) 1995 (SGL Auto)				
GOVERNMENT FUEL CONSUMPTION TESTS - MPG (lites/100 kilometres)								
Constant 90 mph (90km/h)	1.3 Sal 4 spd	1.34 Sal 5 spd	1.5 Sal 5 spd	1.3 Estate	1.5 Estate 4 spd	1.5 Sal Auto	1.5 Est Auto	1.5 Coupe 5 spd
Urban Driving Cycle	48.7 (5.8)	52.3 (5.4)	53.3 (5.3)	48.7 (5.8)	52.3 (5.4)	44.5 (6.5)	44.4 (6.5)	52.3 (5.3)
Constant 70 mph (110km/h)	36.7 (7.5)	36.7 (7.5)	37.2 (7.4)	37.2 (7.4)	37.2 (7.4)	37.2 (7.4)	37.2 (7.4)	37.2 (7.4)
	37.2 (7.4)	37.2 (7.4)	40.4 (7.0)	36.2 (7.6)	39.8 (7.1)	34.4 (8.2)	33.2 (8.5)	40.4 (7.0)

*Option

Nissan Prairie

This is the Nissan Prairie, the world's first true multi-purpose car.

The Prairie has a unique and exciting specification featuring a pillarless design with sliding rear doors, for totally free access to the spacious interior. The tailgate lifts from below bumper level to reveal an exceptionally low floor that's just 17 inches from the ground for easy loading of heavy or awkward objects. Rear seats fold down and forward to provide enormous carrying capacity in a load area that's 59 inches long, 46 inches high and up to 51 inches wide. On long journeys, when you feel like a rest, you can fold down the front and rear seat backs to provide a comfortable sleeping area for two.

The Prairie has a refined, comfortable interior with attractive cloth upholstered seats, deep pile fitted carpets throughout and a high level of luxury standard equipment including tinted glass, quartz clock, push button MW/LW radio, interior tailgate and fuel lid release, internally adjustable door mirrors, illuminated cigar lighter and vanity mirror.

It's also an enjoyable car to drive with the choice of 1.5 or 1.8 litre overhead camshaft engines, a five-speed gearbox, rack and pinion steering and fully independent suspension.

The Nissan Prairie is an entirely new concept in space and versatility designed to make the most of all your family motoring needs.



ENGINE	4 cylinder in-line OHC water cooled	
Type	1482	1800
Capacity (cc)	75/1600	88/2000
Max. power (bhp/torr (DIN))	89/2800	113/2800
Max. torque (lb-ft (DIN))		
Carburettor	Two barrel, downdraught	Two barrel, downdraught
TRANSMISSION	5-speed manual, all synchromesh	
Type		
Gear ratios: 1st	3.333	3.063
2nd	1.955	1.826
3rd	1.286	1.207
4th	0.902	0.902
5th	0.733	0.733
Reverse	3.417	3.417
STEERING	Rack and pinion	
SUSPENSION	Fully independent. Front: MacPherson strut. Rear: Trailing arm.	
BRAKES	Power assisted. Disc front, drum rear.	
WHEELS/TYRES	4 1/2 165SR13	5 1/2 175SR13
KERB WEIGHT (lbs)	2216	2271
PAYLOAD (lbs)	1188	1180
GOVERNMENT FUEL CONSUMPTION TESTS - MPG (litres/100 kms)		
Constant 56 mph (90 km/h)	45.6 (6.2)	39.2 (7.2)
Town driving cycle	36.2 (7.8)	28.2 (10.0)
Constant 75 mph (120 km/h)	32.5 (8.7)	29.4 (9.4)

Bluebird Saloon, Estate and Turbo ZX

New from Nissan – the front wheel drive Bluebird range, offering a winning combination of accommodation with high performance and outstanding roadholding and handling.

The range includes 1.8 and 2.0 litre engines saloons and estates, and the very exciting 1.8 Turbo ZX. All are powered by versions of the Nissan CA series engine which has excellent flexibility and smoothness, with very quick throttle response.

Bluebird saloons and estates are available with either a five-speed gearbox with both fourth and fifth gears "overdrive" ratios, or with a four-speed automatic transmission – this too has its highest ratio an "overdrive". The automatic gearbox also has a lock-up feature which by-passes the torque converter at cruising speeds to give more mpg.

The 121 mph Bluebird Turbo ZX saloon has a very high output – maximum power is 135 bhp, and maximum torque 142 lbs/ft. A five-speed gearbox which has specially selected ratios, tuned suspension, alloy wheels and low profile tyres, give it a unique character.

Bluebird Estate models combine very large carrying capacity with all the comfort and refinement of the saloons.



ENGINE	Bluebird 1.8	Bluebird 2.0	Bluebird Turbo ZX			
Type	4 cyl. in line	4 cyl. in line	4 cyl. in line			
Capacity (cc)	1800	1970	1800			
Max. power	90 bhp at 5200 rpm	105 bhp at 5200 rpm	135 bhp at 6000 rpm			
Max. torque	111.8 lbs/ft at 2800 rpm	120.5 lbs/ft at 2800 rpm	142.5 lbs/ft at 4000 rpm			
Fuel system	Single carb.	Single carb.	Fuel injection, ECCS and turbocharger			
TRANSMISSION						
Gearbox	Five-speed manual	Five-speed manual or four-speed auto	Five-speed manual			
STEERING	Rack and pinion					
SUSPENSION						
Front	Independent MacPherson struts and coil springs, anti-roll bar (all models)					
Rear	Independent parallel links and coil springs, anti-roll bar (all models)					
BRAKES						
Front	Disc	Disc	Disc			
Rear	Drum	Drum	Disc			
WHEELS/TYRES	5/14 Steel (except Turbo 5/14 Alloy) 185/55R14 (DX), 185/70 SR14 (GL, GLX), 185/70 HR14 (Turbo)					
KERS WEIGHT (lb)	2581 (GL, 5-speed)	2420 (GLX, 5-speed)	2512			
GOVERNMENT FUEL CONSUMPTION TESTS – MPG (litres/100 km)						
	1.8 5-spd.	2.0 5-spd.	1.8 Turbo	2.0 Auto.	2.0 Est. 5-spd.	2.0 Est. Auto.
Constant 56 mph (90 km/h)	44.1 (6.4)	44.1 (6.4)	42.2 (6.7)	42.8 (6.6)	42.8 (6.6)	39.2 (7.2)
Town Driving Cycle	29.7 (9.5)	28.8 (9.8)	28.4 (10.4)	29.9 (10.3)	28.8 (9.8)	25.8 (11.6)
Constant 75 mph (120 km/h)	35.5 (8.0)	34.0 (8.3)	31.4 (8.8)	31.7 (8.9)	32.8 (8.8)	30.4 (9.3)



Nissan Laurel

The Nissan Laurel is a refined, luxury saloon, now featuring an updated 2.4 litre engine giving higher performance with even better economy. Subtle styling improvements, redesigned instrumentation and luxurious new velour upholstery add to the impressive appearance of this executive saloon. Distinctive styling combines elegance with excellent aerodynamic qualities producing an exceptionally low drag co-efficient of 0.41. High tension steel used in the body construction reduces overall weight but increases strength for additional safety.

The latest Nissan technology brings you luxury with efficiency not extravagance. Efficiency that's reflected in the Nissan Laurel's exceptional fuel economy.

Advanced 'zero-scrub' front suspension and 4-link coil rear suspension give the Laurel precise, enjoyable handling and a superbly comfortable ride. 2F power assisted steering gives you effortless control. A five speed, close ratio gearbox is light and easy to use and allows relaxed, economical high speed cruising. Fully automatic transmission is available at extra cost.

Luxury equipment on the 2.4 litre Laurel includes electric windows, alloy wheels, electric door mirrors, push button MW/LW radio and stereo cassette player, digital quartz clock with day and date display, interior boot and fuel lid release and tinted glass.

The Nissan Laurel is also available with a 2 litre six cylinder engine and five speed, manual transmission.



2.4 SALOON			2.0 SALOON		
ENGINE:	6 cylinder OHV water cooled		ENGINE:	6 cylinder OHV water cooled	
Type	2300		Type	1990	
Capacity (cc)	2300		Capacity (cc)	1990	
Max power (HP/kW @ RPM)	126/7000		Max power (HP/kW @ RPM)	90/5200	
Max torque (kg/m @ RPM)	153/3000		Max torque (kg/m @ RPM)	103/3000	
Compression ratio	9.4:1		Compression ratio	9.4:1	
Carburettor	Dual barrel, down draught, automatic choke		Carburettor	Dual barrel, down draught, automatic choke	
TRANSMISSION:	5 speed manual, 3 speed automatic		TRANSMISSION:	5 speed manual, 3 speed automatic	
Type	5 speed manual, 3 speed automatic		Type	5 speed manual, 3 speed automatic	
Gear ratios: 1st	3.37	3.43	Gear ratios: 1st	3.90	3.90
2nd	1.93	1.93	2nd	2.24	2.24
3rd	1.33	1.33	3rd	1.57	1.57
4th	1.00	—	4th	1.30	1.30
5th	0.75	—	5th	0.87	0.87
Reverse	3.36	3.10	Reverse	3.67	3.67
Clutch	Dry single plate, hydraulic spring		Clutch	Dry single plate, hydraulic spring	
STEERING:	Power steering, power assisted		STEERING:	Power steering, power assisted	
SUSPENSION:	Front independent coil spring, Rear 4-link coil spring		SUSPENSION:	Front independent coil spring, Rear 4-link coil spring	
BRAKES:	Front ventilated discs, Rear drums, power assisted		BRAKES:	Front ventilated discs, Rear drums, power assisted	
WHEELS/TYRES:	17" J1 Alloy, 185/70-14 inch radial		WHEELS/TYRES:	17" J1 Steel, 185/70-14 inch radial	
KERB WEIGHT (kg):	1540 Manual	1560 Auto	KERB WEIGHT (kg):	1380	
GOVERNMENT FUEL CONSUMPTION TESTS - MPG (litres/100 kilometres)					
	2.4 5 speed		2.4 Auto		2.0 5 speed
Constant 55 mph (90km/h)	40.9 (6.9)	34.4 (8.2)	Constant 55 mph (90km/h)	42.2 (6.7)	
Town Driving Cycle	22.6 (12.5)	24.4 (11.5)	Town Driving Cycle	25.5 (12.5)	
Constant 75 mph (120km/h)	31.4 (8.5)	26.7 (10.6)	Constant 75 mph (120km/h)	31.7 (8.6)	

Silvia Turbo ZX

A new name in the Nissan range – and a new type of sports coupé, the Nissan Silvia Turbo ZX.

It's a car which turns heads wherever it goes, and it has the performance to match. The Silvia Turbo ZX is a two-door coupé with large, comfortable front seats, rear seats which fold forward individually, a large luggage area, and a very high level of equipment including a very advanced four-speaker radio/stereo unit.

The power unit is the Nissan CA engine in 1809 cc form, with a turbocharger and the Nissan-patented ECCS engine management system. It produces 135 bhp (DIN) and 142 lbs/ft of torque – but even more impressive is the quiet, unobtrusive way in which this is done.

The Silvia Turbo ZX is an effortless car to drive (though power assisted steering is available as an option), and it accelerates from 0 to 60 mph in only 8.5 seconds and then equally smoothly on up to its 130 mph maximum. There's the choice of a sporty five-speed gearbox or automatic transmission.

It has all-independent suspension, servo-assisted disc brakes on all four wheels, and low profile tyres on special light alloy wheels. That means roadholding and handling which are an absolute delight, and a car that sits four-square on the road in perfect safety in all conditions.

To special order there's also the Silvia 2.0 DOHC ZX, with the famous 1991 cc four valve per cylinder twin overhead camshaft engine, which produces 144 bhp at 6400 rpm. It is available only with a five-speed gearbox, and otherwise is mechanically similar to the Turbo model.



ENGINE	TURBO	2.0 DOHC
Type	4 cyl. DOHC	4 cyl. DOHC
Capacity (cc)	1809	1990
Bore x stroke (mm)	82.0 x 82.0	88.0 x 88.0
Compression ratio	8.5:1	9.5:1
Fuel system	Fuel injection, ECCS, turbocharger	
Max. power (bhp)	135 (DIN) at 6000 rpm	144 (DIN) at 6400 rpm
Max. torque (lb/ft)	142 (DIN) at 4000 rpm	158 (DIN) at 4000 rpm
TRANSMISSION		
Type	Five-speed manual	Automatic transmission
Gear ratio: 1st	3.767	3.647
2nd	2.281	2.442
3rd	1.584	1.840
4th	1.246	1.499
5th	0.972	1.249
Final drive ratio	3.750	3.880
STEERING		
System	Rack and pinion (power assisted optional)	
SUSPENSION		
Front	Independent drive shaft springs with coil-over	
Rear	Independent semi-trailing arms coil springs with coil-over	
BRAKES		
Front	Disc. Servo assistance	
Rear	Disc. Servo assistance	
WHEELS/TYRES	14 x 15 alloy, 195 60 SR14	
DIMENSIONS		
Wet weight (lb)	2900	3024
Load capacity (kg)	117.7	117.7
GOVERNMENT FUEL CONSUMPTION TESTS - MPG (litre/100km)		
	Manual	Automatic
Combined (litre/100km)	44.1 (6.6)	44.1 (6.6)
Urban (litre/100km)	35.7 (7.0)	35.7 (7.0)
Combined (litre/100km)	38.2 (7.6)	38.2 (7.6)



300ZX 2 + 2 Targa

The all-new Nissan 300ZX range puts the world's best-selling sports car right back at the top of the performance league.

It has an all-new 3-litre V6 aluminium alloy engine, which produces 170 bhp in standard form, and a staggering 228 bhp in Turbo form, to make the 300 ZX Turbo the fastest Japanese car ever made - 0 to 60 mph in 6.8 seconds, and a top speed of 150 mph.

The car is available only in 2 + 2 Targa form, with tinted glass roof panels which can be removed in a matter of seconds and stowed in a specially designed bag in the boot when the weather favours open-top motoring.

The front seats are large and luxurious, with adjustment for reach, rake, height and lumbar support for the driver, and a built-in memory on the walk-through mechanism for the passenger seat, so that it returns to its original position after being tipped forward. The interior is carpeted and trimmed throughout in the most luxurious materials and standard fittings include a four-speaker, three-waveband radio and cassette player with 50 watt output, inertia reel seat belts front and rear and the option on some models of full air conditioning.

Nissan never forget that a 300 ZX is a driver's car, which is why there's full independent suspension front and rear with anti-roll bars, variable ratio power assisted steering, wide alloy wheels with low profile tyres, and massive disc brakes (ventilated at the front). Turbo models also have three-way adjustable shock absorbers.



	300 ZX TURBO	300 ZX
ENGINE:	3.0 litre V6, fuel injection, water cooled	
Type	2000	
Capacity (cc)	2958/200	170/1000
Max power (bhp/kW @ RPM)	242/175 @ 5500	170/125 @ 5500
Max torque (kgf.m @ RPM)	242/1400	170/1400
Fuel system	ECCE electronic fuel injection Turbocharger	Open ECCE, fuel injection
TRANSMISSION:		
Type	5 speed manual, all synchromesh	5 speed manual, 5th synchro
Overdrive (up)	2.30	1.20
1st	2.65	1.80
2nd	1.75	1.25
3rd	1.00	0.80
4th	0.70	0.60
5th	0.45	0.40
Reverse	3.10	2.10
STEERING: Type	Variable ratio, power assisted rack and pinion	
SUSPENSION: Type	Fully independent, Front MacPherson strut, coil spring, Rear set screw-beam with coil spring	
BRAKES: Type	Power assisted discs all round	
WHEELS:	15.5 alloy	
TYRES:	Front - 205/45 SR 15, Rear - 225/50 VR 15	205 / 150 VR 15
KERB WEIGHT (kg):	1141	1050
FUEL TANK CAPACITY (imp. gals):	11.0	
GOVERNMENT FUEL CONSUMPTION TESTS - MPH (litres/100km)		
	Turbo	Manual
Constant 55 mph (90km/h)	27.2 (8.5)	21.7 (7.5)
Open Driving Cycle	25.0 (8.8)	18.7 (7.0)
Constant 75 mph (120km/h)	30.7 (9.2)	20.7 (7.8)

300C Saloon & Estate

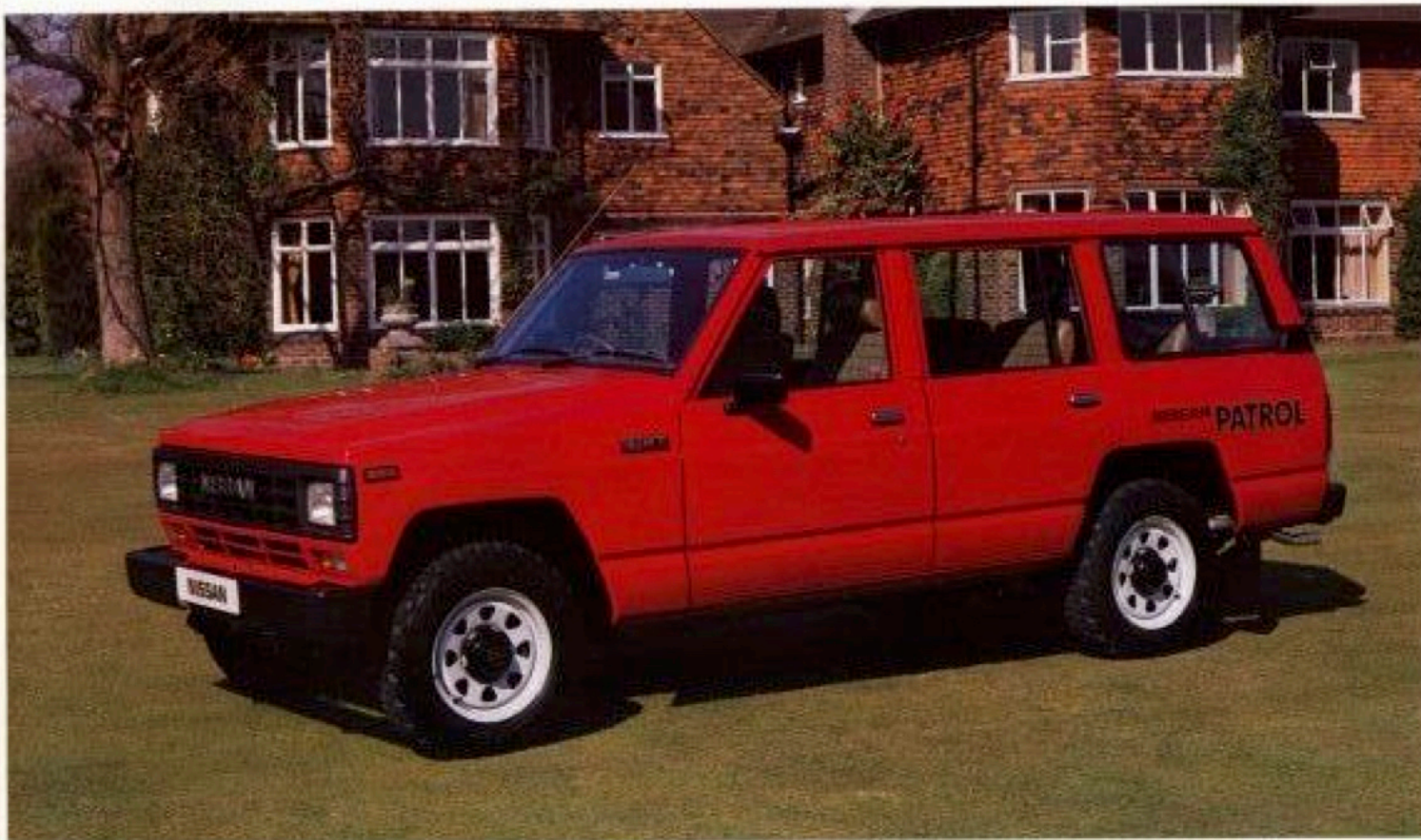
A very advanced and stylish new contender, the Nissan 300C, has joined the luxury executive car market. Powered by the exceptionally smooth V6 engine used in the new Nissan 300ZX sports car, the 300C is available as a sumptuous five-seater saloon, or as a very capacious Estate, with seating for up to seven people.

Both cars have a very full specification, with such items as power steering, central door locking, a sophisticated three waveband radio/stereo cassette system, electric window lifters, electric remote controls for mirror adjustment, boot lid and fuel filler lid opening, all fitted as standard. The saloon is equipped with a high-efficiency air conditioning system.

The technical specification is equally advanced, starting with the widely acclaimed Nissan VG series engine in 3 litre form. The V6, alloy-head unit is fitted with fuel injection and produces 155 bhp in the Saloon, and 150 bhp in the version fitted to the 300C Estate. Saloon versions are equipped with a super-smooth four-speed automatic transmission in which the highest ratio is an 'overdrive', and a lock-up torque converter further aids economy. Estate versions have a five-speed manual gearbox in which fifth is an 'overdrive'. The 300C saloon has disc brakes on all four wheels (ventilated discs at the front) and the Estate has ventilated discs at the front and drum brakes at the rear. Both cars have independent strut front suspension with an anti-roll bar. The saloon has coil spring rear suspension, while to cope with heavy load carrying and towing, the Estate has leaf springs at the rear.



	SALOON	ESTATE
ENGINE:	All models, V6 cylinder, overhead camshaft, water-cooled	
Type	2960	
Capacity (cc)	155/3200	150/3200
Max power (bhp/rpm) (DIN)	174/3800	170/3800
Max torque (kg-m/rev)	Electronic injection	
Fuel System		
TRANSMISSION		
Type	4 speed fully automatic	5 speed manual, all synchromesh
Gear ratios: 1st	2.458	3.211
2nd	1.458	1.922
3rd	1.000	1.328
4th	0.886	1.000
5th	—	0.758
Reverse	2.182	2.382
STEERING: Type	Variable ratio, power assisted recirculating ball	
SUSPENSION: Type	Front Independent Rear: 5-link coil springs	Front Independent Rear: Beam-riding leaf spring
BRAKES: Type	Power assisted discs all round (front ventilated)	Front: Ventilated Discs Rear: Drums Power assisted
WHEELS/TYRES:	5 1/2 J x 14 Alloy 195/70 HR 14 radial	5 1/2 J x 14 Steel 195/70 HR 14 radial
KERB WEIGHT (kg)	3120	3197
TOWING CAPACITY (with brake) kg	4178	4378
FUEL TANK CAPACITY (imp. galls)	15.8	12.2
GOVERNMENT FUEL CONSUMPTION TESTS - MPG (litres/100 kilometres)		
Constant 56 mph (90km/h)	33.6 (8.4)	33.6 (8.4)
Town Driving Cycle	26.8 (13.7)	22.2 (12.7)
Constant 75 mph (120km/h)	27.2 (13.4)	26.7 (11.6)



Patrol Hardtop & Estate

Nissan Patrols are go anywhere, all-purpose 4-wheel drive vehicles that have been tested in countries all over the world to perform ruggedly and reliably whether clambering over rocks, ploughing through mud or snow, or climbing the side of a mountain.

They are also excellent load carriers for normal road use, offering a comfortable life style with thickly upholstered seating, powerful heating and ventilation and luxury equipment levels including tinted glass and push-button radio.

Both Hardtop and Estate models have a choice of 2.8 litre petrol or 3.3 litre diesel engines, they have power steering and a simple-to-use transfer box. For normal road use, only the rear wheels need be driven, giving extra economy. For off-road work, 4-wheel drive in either high or low ratios can be engaged and you have a willing workhorse that will tackle any sort of terrain.

The Patrol Hardtop is a 2-door, 5-seater short wheelbase vehicle with easy to clean vinyl covered seats and flooring. The Patrol Estate is a 4-door, 7-seater long wheelbase version with the added luxury of cloth seats and floor carpets.

Both are built by Nissan to exceptionally high quality standards, with the bodywork bolted to a rugged chassis for a lifetime of hard work.

ENGINE:	HARDTOP		ESTATE	
	Petrol	Diesel	Petrol	Diesel
Type	4-cylinder in-line, water-cooled, OHC Petrol, OHC Diesel			
Capacity (lit)	2750	3000	2750	3000
Max power (hp/kw) (DIN)	120/8800	90/3600	120/4800	90/3600
Max torque (kg m) (DIN)	144 @ 3000	190/1800	144 @ 3000	190/1800
Fuel system	Petrol: 2 injectors, carburettor; Diesel: Bosch 5 injection pump			
TRANSMISSION:	5-speed manual, 50 synchronizers			
Type	3.110			
Gear ratios: 1st	2.157			
2nd	1.499			
3rd	1.000			
4th	0.700			
Reverse	3.157			
STEERING Type	Power assisted recirculating ball and tie rod			
SUSPENSION Type	Swain-axle coil springs and telescopic shock absorbers, all round. Front stabilizer bar stabilizers.			
BRAKES Type	Front: Disc/Rear: Drum; Power assisted			
WHEELS/TYRES	5.50" Steel 225-R15 15 or 225-R15 16 or Snow Treads or 5.50" 16C 16C and Lug Compound			
ASPD WEIGHT (kg)	1541	2030	1541	1541
TOWING CAPACITY (kg) (Tow wheel trailer with inertia brake)	4000	1700	4000	4000
FUEL TANK CAPACITY (imp. gals)	18.07			
GOVERNMENT FUEL CONSUMPTION TESTS - mpg (litres/100km) (DIN)				
Constant 60 mph (96km/h)	25.4 (11.1)	20.1 (13.1)	22.2 (11.1)	25.2 (11.2)
Taken Driving Cycle	26.8 (11.0)	22.4 (12.5)	24.0 (10.9)	26.2 (11.3)
Constant 75 mph (120km/h)	17.8 (15.8)	17.8 (15.8)	16.4 (17.2)	N/A



THE MULTI-NATIONAL NISSAN MOTOR COMPANY

More than 50 years of expertise and experience goes into the design and manufacture of every new Nissan vehicle. Producing around 2,500,000 motor vehicles a year at some of the most technologically advanced facilities in the world Nissan have built up an enviable reputation as a major multinational enterprise. Nissan have also diversified into many other areas and now lead in aerospace, marine products, forklift trucks and textile machinery.

Nissan are the fourth largest vehicle manufacturer in the world with the highest reputation for precision-built, reliable cars. Apart from the main manufacturing plants in Japan there are additional factories in America, Australia, Peru and Spain all operating to the same exacting standards. Nissan, therefore, produces consistently high quality vehicles wherever it manufactures. This multinational experience, dating back to the 1960s, has given Nissan a broad, outward looking attitude with a continued commitment to overseas manufacturing. At the same time Nissan exports its products to 150 countries around the world.

A major step forward has been taken with the foundations laid for a British manufacturing plant at Washington in the North-East of England. Due to be finished by the end of 1985 and eventually capable of producing 250,000 cars annually, the plant will significantly strengthen the position of Nissan within the U.K. market and will also be of benefit to the British economy as a whole.

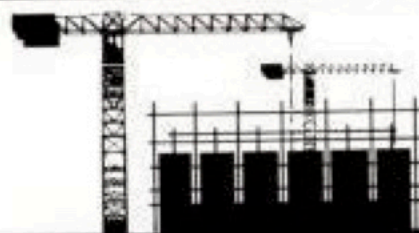
The dual aspects of a fine British engineering tradition and Japanese high technology will make the Washington plant the most modern in Europe. Extensive use of robots will ensure consistency and quality unmatched in Europe – in Japan Nissan already use 1400 such robots. Quality control circles will also maintain the commitment to quality and reliability.

Recruitment of senior personnel has already begun and eventually the total workforce will grow to around 500 people. Extensive training will mean that the labour force will be among the most skilled in the industry. Production is planned to begin in 1986.

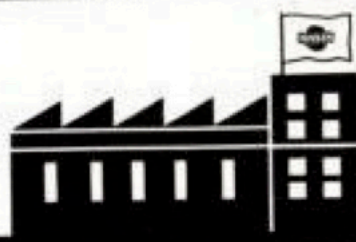
NISSAN BUILDING IN BRITAIN



1984

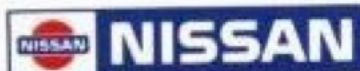


1985



1986

FLETCHER MOTORS
(Huddersfield) LTD.,
LOCKWOOD ROAD,
HUDDERSFIELD, HD1 3QT
Tel: 0484 512577
V.A.T. Reg. No. 169 6332 25



NISSAN UK LIMITED

Nissan House - Columbia Drive
Durrington - Worthing - West Sussex BN13 3HD

Details given in this publication are correct at the time of going to press. However, as Nissan's policy is one of continuous improvement of its products, the right is reserved to change specifications and colours available. Where possible we will amend our publicity material, but we do advise buyers to check with their Nissan dealer the exact details of the vehicle being purchased.

Designed and Printed by:
Nissan U.K. Ltd at Worthing

S24.250m.F1458.11.84