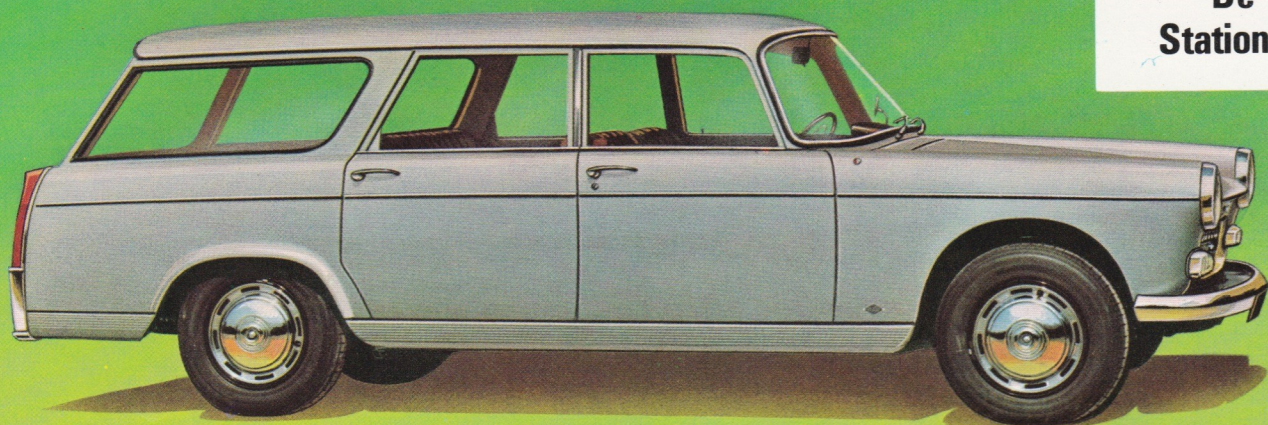


De Luxe Station Wagon



404 PEUGEOT

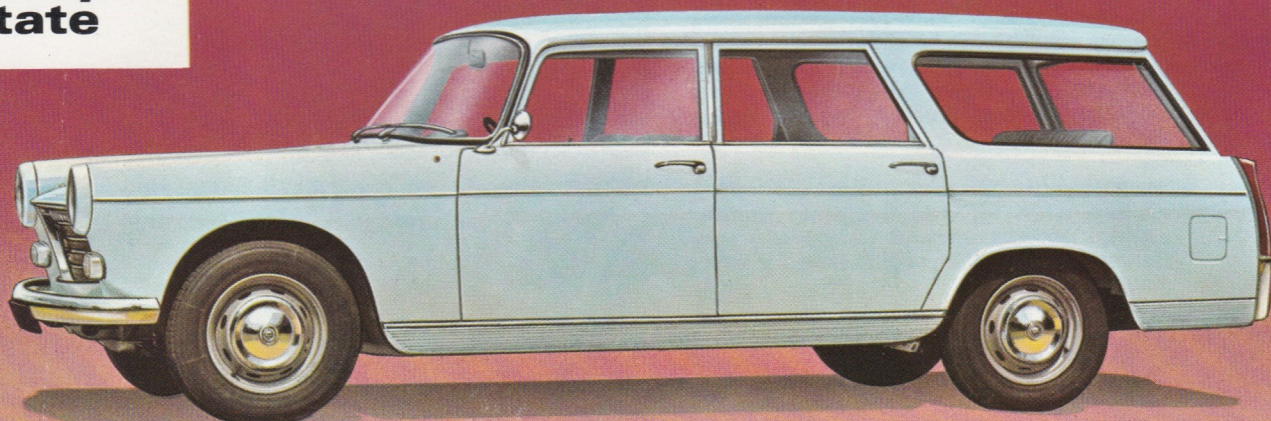
De Luxe Station Wagon

5/6 seater - 4 doors.
Counter balanced upward opening rear tail gate.
Pay load - 9 cwts.
Engine 9 c.v./80 BHP (SAE) - 90 m.p.h. - 25 miles per gallon.
Peugeot patent automatic disconnectable fan.
New 4 speed fully synchromesh gear box
Thermostable power assisted brakes.
Heating, de-frosting, fresh air system with 2 speed fan.
Windscreen washer. Water temperature gauge.
Anti-dazzle rear view mirror, electric clock, cigarette lighter.
Headlamp flasher switch. Front and rear roof lights.
Separate front seats with adjustable back rests, convertible into couchettes. Rear seat backrest and cushion can be folded.
Central dashboard ashtray and ashtrays on rear doors.
Leatherette interior trim.
Metallic paint finish.
Rear floor finished in durable imitation mahogany with longitudinal runners. Chromed headlamp rim.
Stainless steel hub caps. Special tyres.
Length 15' (4.58 m). Width 5'4" (1.62 m).
Height laden 4'9" (1.43 m).
Overall turning radius 18'6" (5.58 m)
Towing capacity 23.5 cwts (1200 kg).



LA PUBLICITÉ FRANÇAISE - R.C. SEINE 54 B 5424 - PRINTED IN FRANCE BY IMP. MAILLET - ST-OUEN - 9-67 - PP 99.68

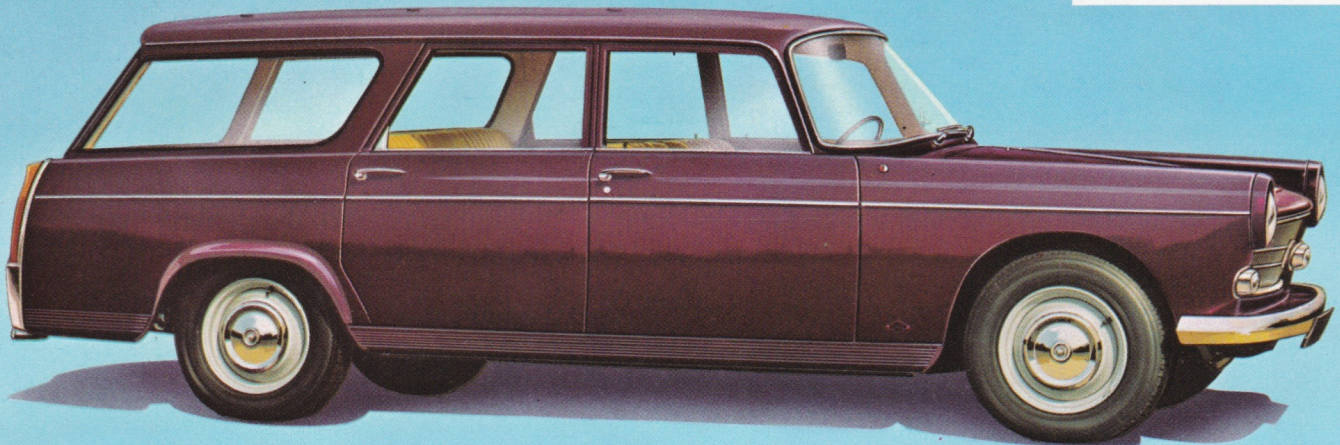
Family Estate



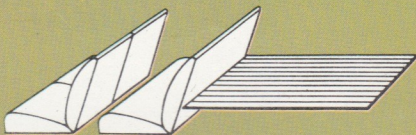
Family Estate

7/8 seats - facing forward - 4 doors.
 Counter balanced upward opening rear tail gate.
 9 c.v./80 BHP (SAE) Petrol Engine 90 m.p.h. 25 miles per gallon.
 Thermostable power assisted brakes on petrol models.
 Or 8 c.v./68 BHP (SAE) Diesel engine, 80 m.p.h. 30 miles per gallon.
 Peugeot patent automatic disconnectable fan.
 New 4 speed fully synchromesh gear box.
 Heating, de-frosting, fresh air system with 2 speed fan.
 Windscreen washer, water temperature gauge.
 Electric clock. Anti-dazzle rear view mirror. Headlamp flasher switch.
 Separate front seats with adjustable backrests convertible into couchettes. Separate hinged intermediate seats.
 Rear seat with folding backrest and cushion.
 Central dashboard ashtray and ashtrays on rear doors.
 Interior trimmed in cloth or leatherette (according to market).
 Front and rear roof lights. Special tyres.
 Length 15' (9.58 m). Width 5'4" (1.62 m).
 Height laden 4'9" (1.43 m)
 Overall turning radius 18'6" (5.58 m)
 Towing capacity 23.5 cwts (1,200 kg).

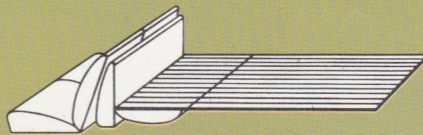
Station Wagon



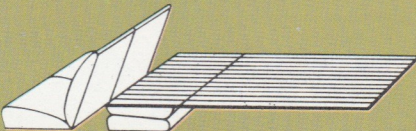
LOADING AREA AND VOLUME



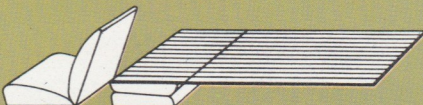
Driver and 4 or 5 passengers: Large space for luggage and parcels.



Driver and 1 or 2 passengers: The rear seat back rest folded over the bottom cushion augments the length of the loading area.



Driver and 1 or 2 passengers: Large volume and vast area for the transport of goods.



Driver only: The front passenger's seat can be temporarily removed to provide maximum stowage length and area for carrying bulky loads.

5/6 seats - 4 doors.
 Counter balanced upward opening rear tail gate.
 Pay load 10 cwts (500 Kg) 8 c.v./66 BHP (SAE) petrol engine 80 m.p.h. or diesel engine 8 c.v./63 BHP (SAE) 72 m.p.h.
 Heating, de-frosting, fresh air system.
 Windscreen washer.
 Separate, adjustable front seats.
 Rear seat with folding back rest and cushion.
 Interior trimmed in hardwearing leatherette.
 Spare wheel mounted under rear floor.
 Length 15' (4.58 m). Width 5'4" (1.62 m)
 Height laden 4'9" (1.43 m)
 Overall turning radius 18'6" (5.58 m).
 Towing capacity 23.5 cwts (1,200 kg).

Subject to alterations by the maker and options for mechanical or body components relevant to country of final destination.