

 SEAT

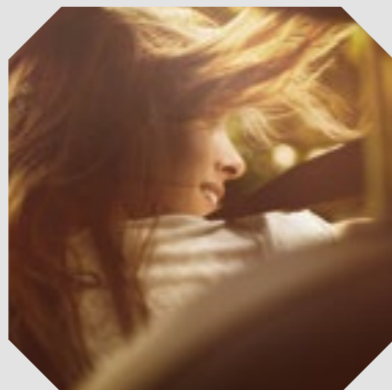
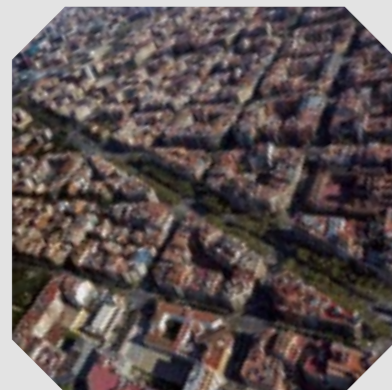
IBIZA



TECHNOLOGY TO ENJOY

INSIDE SEAT

In 1953, with the very first SEAT, the dreams of one country started to move forward. Today, more than 60 years later, our technology has evolved with a very focused aim: to make beautiful things happen every day in the world...



Engineers get inspiration from all they see and experience. SEAT is inspired by Barcelona, where design goes through the essence of beauty. And we combine our design, with the top technology and quality standards of the Volkswagen Group.



Our history is built by the stories of millions of people. And we will always be driven by our customers, because all that we want to do is to provide technology to be enjoyed by you.

TECHNOLOGY TO ENJOY

Contents

IBIZA SPORTS COUPÉ	4
IBIZA 5 DOOR	6
INTERIOR DESIGN	8
EFFICIENCY & PERFORMANCE	10
TECHNOLOGY & CONNECTIVITY	12
10 REASONS	14
TRIMS	18
COLOUR PACKS	24
UPHOLSTERY	26
COLOURS	28
WHEELS	30
EQUIPMENT	32
TECHNICAL DATA	36
ACCESSORIES	40
SEAT SERVICE	44
SEAT FINANCE	46





SPORTS COUPÉ

Dynamic Style.

SC STANDS FOR SPORTS COUPÉ AND THE IBIZA SC is the dynamic three-door variant of the Ibiza. In other words, it stands for thrilling performance and eye-catching style. Sharp lines are the perfect canvas for striking colours; the honeycomb front grille, lowered front air intake, and sharp looking headlights combine to give the Ibiza a signature style that's instantly recognisable. The Ibiza SC is made to make your heart beat faster.

Model shown: Ibiza CUPRA Black with optional Nevada White metallic paint.

Ibiza SC availability is subject to stock.



5 DOOR

The best
of all worlds.

THE IBIZA 5 DOOR (5DR) CREATES THE PERFECT BLEND OF VERSATILITY AND DESIRABILITY.

Now combined with colour packs for the ultimate in customisation, the Ibiza 5DR really can be a true reflection of you. This car represents innovation and high quality, in the same fun, sporty, versatile and trend setting package that you've known for over 30 Years.

Model shown: Ibiza SE Technology with optional Bi-xenon headlights, panoramic glass sunroof, Black Pack and Chilli Red metallic paint.

Chilli Red metallic paint availability is subject to stock.

INTERIOR DESIGN

Set the mood.

THE INTERIOR HAS BEEN DESIGNED WITH ERGONOMICS AT HEART and a focus on making the most of every detail. The infotainment system's integrated touchscreen means the controls are easier than ever and you can even set the mood for everyday driving by adjusting the intensity of the ambient lighting.



Model shown: Ibiza FR Red Edition Technology.
Ibiza FR Red Edition Technology availability is subject to stock.

EFFICIENCY & PERFORMANCE

TSI: smaller engine, bigger performance.

INTRODUCING THE ECOTSI ENGINE – the best of both worlds. The EcoTSI engine combines the powerful performance of a petrol engine and the lower consumption and CO₂ emissions of a diesel. It assures more control and anticipation without losing out on smooth handling or driving pleasure. With combined miles per gallon of 67.3 and emissions of 98 g of CO₂ per Km, the EcoTSI is the most clean and efficient petrol engine available in the Ibiza.*

* Fuel consumption and CO₂ figures are obtained under standardised EU test conditions (Directive 93/116/EEC). This allows a direct comparison between different manufacturer models but may not represent the actual fuel consumption achieved in 'real world' driving conditions. More information is available on the SEAT website at www.seat.co.uk and at www.dft.gov.uk/vca.

Model shown: Ibiza SE Technology with optional Bi-Xenon headlights Black Pack and Chilli Red metallic paint.

Chilli Red metallic paint availability is subject to stock.





TECHNOLOGY & CONNECTIVITY

Stay connected with our Technology models

TO GIVE YOUR IBIZA THAT LITTLE EXTRA SOMETHING our Technology models include Media System Plus, Navigation System and Full Link. Combined with a high resolution 6.5" colour touchscreen, high quality audio with voice recognition and Bluetooth® connectivity.

Full Link seamlessly integrates your smartphone with your media system, keeping you connected to your digital world at the touch of a button; sync emails, social media and all of your favourite digital playlists.

Model Shown: Ibiza SE Technology with optional Climate Control.

10 REASONS

Go for it in 10, 9...

AMONGST THE MANY REASONS you have to go for an Ibiza, let us show our Top 10 picks.

- 1** **It's your Ibiza so make it yours**
The Ibiza comes with a host of colours and exciting Colour Packs that makes the Ibiza our most customisable car ever. Mix and match interior and exterior details to create a look that is unique to you. Model shown is in Chili Red and availability is subject to stock



- 2** **Higher Quality All Around**
Everything inside the SEAT Ibiza has been redesigned to give you the best experience. The high quality materials and exacting standards of the Volkswagen Group mean that everything from the upholstery stitching right down to the touch and feel of every button has been reviewed.



- 3** **Stay Connected**
The SEAT Ibiza comes packed with technology to keep you connected, but to give your Ibiza that little extra something choose our Technology models. Packaging together Media System Plus, Navigation System and Full Link, it is a great way to keep connected while on the move.



- 4** **Technology at Your Side**
Packed with the latest safety features and technology, the Ibiza looks after you while you are on the move. Multi-collision braking and automatic warning lights combine to assist you in times of danger, and tiredness recognition warns you when you may need to take a break. Model shown is in Chili Red and availability is subject to stock.



- 5** **Iconic Dynamic Design**
The unique styling and instantly recognisable character of the Ibiza continues in this model, but are now combined with a variety of colour packs, LED daytime running lights and multiple personalisation options designed to allow you to convey your unique personality.



- 6** **Latest Generation of Engines**
With combined mpg as high as 78.5 and only 93 g CO₂/km, the suite of Ibiza engines are as environmentally friendly as they are economical. The Ibiza allows you to enjoy outstanding fuel economy without losing a hint of dynamism or driving pleasure.*

- 7** **Built to Enjoy**
Inherent in our DNA is our learnings from the racetrack and the expertise of the SEAT Sport team. This has allowed us to create a chassis that is agile yet tough, giving you an added dimension to your driving experience. This in combination with the optional SEAT drive profile allows you to select the steering and suspension style to suit the conditions and your mood.

- 8** **Crystal clear sound**
The Ibiza comes with Digital Audio Broadcasting (DAB) digital radio as standard, so no matter where you are you can always listen to your favourite stations. In combination with the optional SEAT sound system experience crystal clear definition and an immersive sound experience.

- 9** **Urban animal**
Optional rear parking sensors and rear view camera mean the Ibiza helps you to get in and out of the tightest of spaces ensuring you can get to your destination with ease and for those of us that are night owls, the optional Bi-Xenon headlights with adaptive front lighting system light up your way even in the darkest of nights.

- 10** **Up to 5 million reasons**
After 30 years and more than 5 million units sold, you know this car not only has design in its DNA, but also youth, fun and reliability.

* Fuel consumption and CO₂ figures are obtained under standardised EU test conditions (Directive 93/116/EEC). This allows a direct comparison between different manufacturer models but may not represent the actual fuel consumption achieved in 'real world' driving conditions. More information is available on the SEAT website at www.seat.co.uk and at www.dft.gov.uk/vca.



SEAT IBIZA

Discover the Ibiza range.

The SEAT Ibiza combines striking external features with a stylish interior. A range of exterior colours and colour packs allow you to customise your Ibiza. Choose from our exciting range and find the Ibiza to match your personality.

TRIM

Ibiza SOL

Simple Design



Ibiza SC availability is subject to stock.



Technology is at the heart of the Driver Pack, designed to make every journey as effortless as possible with Cruise Control, Hill Hold Control and the Tiredness Recognition System for assisted safety.



The 15" Marsala alloy wheels give the Ibiza SOL an urban edge. Perfect for the urban environment.

Urban animal.

The Ibiza SOL has added assistance features to make driving in all conditions that little bit easier.

SOL TRIM

- 15" 'Marsala' alloy wheels
- Emergency tyre repair kit
- Single halogen headlights
- Body-coloured bumpers with integrated mouldings
- Media System Touch / 5.0" Black & White touchscreen / USB port / SD card slot / FM/AM radio / Four speakers
- Bluetooth® audio streaming with handsfree system
- DAB (digital audio broadcasting)
- Steering wheel mounted audio and phone controls
- Easy entry and centre rear headrest (Ibiza SC only)
- Air conditioning
- Electrically adjustable and heated door mirrors
- Trip computer
- Folding rear bench seat
- Height-adjustable driver's seat
- Electric front windows (one touch with anti-squeeze)
- Electro-mechanical power steering (speed sensitive)
- 12 volt power supply in centre console
- Height- and reach-adjustable steering wheel
- Driver Pack: / Cruise control / Hill Hold Control / Tiredness Recognition System
- Remote central locking with deadlocks
- Alarm (perimeter and interior monitoring) with back-up horn and tow-away protection
- Driver and front passenger airbags
- Front passenger airbag de-activation
- Front side airbags
- Three-point seatbelts on all seats
- Front seatbelt reminders
- ISOFIX points with top tether in outer rear seats
- Remote central locking
- Electronic engine immobiliser
- Electronic Stability Control (ESC) with Emergency Brake Assist (EBA)
- Tyre Pressure Monitoring
- Multi-Collision Braking System

Looking good.

With alloy wheels, LED daytime running lights and a choice of colour packs, the SE Technology's good looks are eye catching.

The SE Technology comes with a high resolution 6.5" colour touchscreen, Navigation system and Full Link technology, allowing a seamless integration between your smartphone with your Ibiza's infotainment system.

IN ADDITION TO THE SOL TRIM*

- 15" 'Ibia' alloy wheels
- Twin halogen headlights with LED Daytime Running Lights (DRLs)
- LED taillights
- Body-coloured door handles
- Body-coloured door mirrors
- Front fog lights with cornering function
- Gloss black B and C pillars (not on Ibiza SC)
- Media System Plus / 6.5" colour touchscreen with proximity sensor / SD card slot x2 / Bluetooth® voice control / MP3 CD player
- Navigation System / 3D Map display with voice recognition
- Full Link; MirrorLink™, Apple CarPlay™ and Android Auto™
- Leather steering wheel and gear knob
- Split folding rear seats (60/40)

*Removes Driver Pack (Cruise Control, Hill Hold Control, Tiredness Recognition System)

TRIM

Ibiza SE Technology

Welcome to a new era of smart driving



Ibiza SC availability is subject to stock. Apollo Blue is no longer available to order.



MEDIA SYSTEM PLUS

Media System Plus gains a multifunctional media system with both MP3 and CD player, 2 x SD card slots, Bluetooth® voice control and a high-resolution 6.5" colour touchscreen display with proximity sensor. All at the touch of your fingertips, so you can concentrate on the road.



NAVIGATION SYSTEM

The Satellite Navigation System provides dynamic route guidance with 3D map display and emblematic buildings, so you can easily find your destination before you even leave the house.



FULL LINK

Full Link seamlessly integrates your smartphone with your media system, keeping you connected to your digital world at the touch of a button; sync emails, social media and all of your favorite digital playlists.

TRIM

Ibiza FR Technology

Designed to look incredible inside and out



Model shown has optional Bi-Xenon headlights.
Chilli Red metallic paint availability is subject to stock.



MEDIA SYSTEM PLUS

Media System Plus gains a multifunctional media system with both MP3 and CD player, 2 x SD card slots, Bluetooth® voice control and a high-resolution 6.5" colour touchscreen display with proximity sensor. All at the touch of your fingertips, so you can concentrate on the road.



NAVIGATION SYSTEM

The Satellite Navigation System provides dynamic route guidance with 3D map display and emblematic buildings, so you can easily find you're destination before you even leave the house.



FULL LINK

Full Link seamlessly integrates your smartphone with your media system, keeping you connected to your digital world at the touch of a button; sync emails, social media and all of your favorite digital playlists.

Beautifully evolved.

The SEAT Ibiza FR gives you performance at the push of the pedal, yet refinement in everyday driving.

The FR Technology comes with a high resolution 6.5" colour touchscreen, Navigation system and Full Link technology, allowing a seamless integration between your smartphone with your Ibiza's infotainment system.

IN ADDITION TO THE SE TECHNOLOGY TRIM

- 16" 'Stratos' alloy wheels
- Exclusive FR front and rear bumpers
- Twin exhaust pipes
- Exclusive flat-bottomed FR steering wheel and interior details
- FR front sports seats
- Height-adjustable front passenger's seat
- Driver Pack
 - / Cruise control
 - / Hill Hold Control
 - / Tiredness Recognition System
- Convenience Pack
 - / Electrically folding door mirrors
 - / Auto headlights
 - / Rain-sensing wipers
 - / Auto dimming rear-view mirror
 - / Coming and leaving home headlight function
- Sports suspension
- Steering wheel-mounted gearshift paddles (DSG models only)
- Electronic differential lock XDS*

* For engines greater than 100PS.

The Power of RED.

With the Ibiza FR Red Edition Technology we have taken the excellent Ibiza FR Technology and given it a touch of colour. The red colour pack combines exterior and interior red highlights with metallic paint as standard.

IN ADDITION TO THE FR TECHNOLOGY TRIM

- Metallic paint
- Red Exterior Pack
 - / 17" 'Dynamic' machined alloy wheels with red accents
 - / Red door mirrors
 - / Red front grille frame
- Dark tinted rear windows
- Red Interior Pack
 - / Red seatbelts
 - / Red air vent surrounds
 - / Red steering wheel trim

TRIM

Ibiza FR Red Edition Technology

Limited to 500



Model shown has optional Bi-Xenon headlights.
Ibiza SC availability is subject to stock.



The FR Red Edition Technology is a great example of how a car can look and feel sporty, dynamic and unique. The bold red accents throughout the interior remind you, how special this car is.



The excellent exterior of the Ibiza FR Red Edition Technology is now matched with an integrated interior that balances being comfortable and being purposeful. The FR Red Edition gives you that purpose, with a sporty and dynamic feel.



Set up the FR Red Edition Technology to how you feel... with optional SEAT Drive Profile you can make the Ibiza react to how you feel.

TRIM

Ibiza CUPRA

The perfect combination of performance and precision



Ibiza CUPRA availability is subject to stock.



A large trapezoidal exhaust pipe provides the most efficient path for exhaust gases to escape, letting your engine breath efficiently as more fuel and air are burned to create extra power.



The Ibiza CUPRA is the most intense Ibiza we've ever built. The 192 PS engine has 12 PS more than the previous version and is capable of 0-62 mph in just 6.7 seconds with a top speed on the road of 146 mph.



The CUPRA's exclusive 17" wheels are a detail that is sure to catch the eye of the beholder.

For those who grow sportier.

Sportier and more stylish than ever, the Ibiza CUPRA is here to delight all those seeking a car that not only takes the thrill of sporty driving to the next level but who also seek to intensify their everyday driving experience.

IN ADDITION TO THE FR TECHNOLOGY TRIM*

- 17" 'Barcino' alloy wheels
- Bi-Xenon headlights with Adaptive Front-lighting System
- Gloss Black door mirrors
- Gloss Black front grille frame
- Exclusive CUPRA front and rear bumpers
- Dark tinted rear windows
- Race-honed central exhaust
- SEAT Drive Profile
- Exclusive flat-bottomed CUPRA steering wheel and interior details
- CUPRA front sports seats
- Climate control

* Removes Media System Plus, satellite Navigation and Full Link.

Technology Intensified.

The CUPRA Black not only gives you sport and style, but a host of technology to enjoy.

IN ADDITION TO THE CUPRA TRIM

- 17" Black 'Barcino' alloy wheels with red brake callipers
- Media System Plus / 6.5" colour touchscreen with proximity sensor / SD card slot x2 / Bluetooth® voice control / MP3 CD player
- Navigation System / 3D Map display with voice recognition
- Full Link; MirrorLink™, Apple CarPlay™ and Android Auto™

TRIM

Ibiza CUPRA Black

The perfect combination of performance, style and technology



Ibiza CUPRA availability is subject to stock.



Full Link seamlessly integrates your smartphone with your media system, keeping you connected to your digital world at the touch of a button.



Ergonomic sports seats provide ultimate comfort and control, keeping you in an optimal driving position with maximum lateral support on sharp turns and dynamic corners.



The CUPRA Black's exclusive 17" wheels come with red callipers as standard.

COLOUR PACK

WITH YOUR NAME WRITTEN
ALL OVER IT.

The Ibiza allows you to make it unmistakably yours by adding your own personal touches through any one of our colour packs.

COLOUR PACK

	FR Red Edition	Titanium Pack	Black Pack	White Pack
Alloy wheel with coloured accents	■	■	■	-
Coloured front grille frame	■	■	■	■
Coloured door mirrors	■	■	■	■
Upholstery in colour pack colour	-	-	-	-
Coloured air vent surrounds	■	-	-	-
Steering wheel with coloured accents	■	-	-	-
Gear knob stitching in pack colour	■	-	-	-
Red seatbelts	■	-	-	-

BLACK



TITANIUM



WHITE



Chilli Red, Alor Blue, Apollo Blue and Lima Green metallic paint availability is subject to stock.

SEAT IBIZA

Upholstery



MOULTY AA **SL**



KINETIC BLACK BA **SE**



PIPPER EMBOSEE DA **FR**



RED INTERIOR COLOUR PACK DA + P09 **FR R**



ALCANTARA BLACK DA + PLV **FR**



SUNY EA **Cu CuBl**

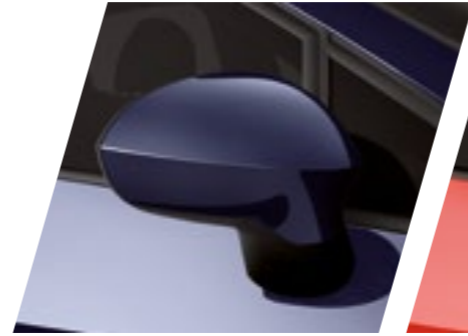


ALCANTARA BLACK EA + PLV **Cu CuBl**

SOL /SL/
SE Tech /SE/
FR Tech /FR/
FR Red Tech/FR R/
CUPRA /Cu/
CUPRA Black /CuBl/
Standard **■**
Optional **■**



SEAT IBIZA
Colours



MEDITERRANEAN BLUE * S/L SE FR



EMOCION RED * S/L SE FR Cu CuBl



WHITE * S/L SE FR



NEVADA WHITE ** S/L SE FR FR R Cu CuBl



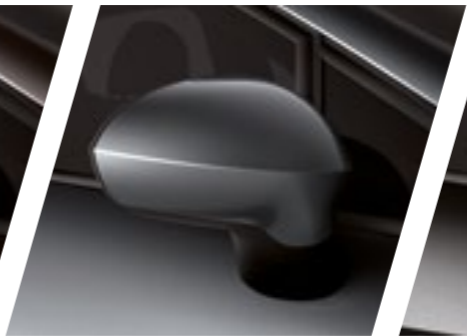
ICE SILVER ** S/L SE FR Cu CuBl



MOONSTONE SILVER ** S/L SE FR



TECHNIC GREY ** S/L SE FR



MONSOON GREY ** S/L SE FR FR R Cu CuBl



MIDNIGHT BLACK ** S/L SE FR FR R Cu CuBl

SOL /S/L/
SE Tech /SE/
FR Tech /FR /
FR Red Tech /FR R/
CUPRA /Cu/
CUPRA Black /CuBl/
Standard ■
Optional □
*Non-metallic
**Metallic

Model shown: Ibiza FR Red Edition Technology.
Ibiza FR Red Edition Technology availability is subject to stock.

SEAT IBIZA
Wheels

15 INCH



IBIA SILVER SE

16 INCH



CARTAGO SILVER SE



CARTAGO BLACK SE

17 INCH



DYNAMIC TITANIUM FR



DYNAMIC RED FR R



TAGUS SILVER FR



MARSALA ALLOY SE



STRATOS SILVER FR



TAGUS BLACK FR



BARCINO SILVER Cu



BARCINO BLACK CuBl

SOL /SL/
SE Tech /SE/
FR Tech /FR/
FR RED and FR Red Edition Tech /FR R/
CUPRA /Cu/
CUPRA Black /CuBl/
Standard ■
Optional ■

EQUIPMENT

Ibiza

	IBIZA					
	SOL	SE Tech	FR Tech	FR Red Ed. Tech	CUPRA	CUPRA Black
EXTERIOR						
15" "Marsala" alloy wheels with 185/60 R15 tyres	■	–	–	–	–	–
15" "Ibiza" alloy wheels with 185/60 R15 tyres	–	■	–	–	–	–
16" "Stratos" alloy wheels with 215/45 R16 tyres	–	–	■	–	–	–
17" "Dynamic" machined alloy wheels with red accents 215/40 R17 tyres	–	–	–	■	–	–
17" "Barcino" alloy wheels with 215/40 R17 tyres	–	–	–	–	■	–
17" Black "Barcino" alloy wheels with 215/40 R17 tyres	–	–	–	–	–	■
Emergency tyre repair kit	■	■	■	■	■	■
EXTERIOR EQUIPMENT						
Mediterranean Blue paint	■	■	■	–	–	–
Emocion Red paint	□	□	□	–	■	■
Metallic paint	□	□	□	■	□	□
Red brake callipers	–	–	–	–	–	■
Single-bulb halogen front headlights with electric adjustment	■	–	–	–	–	–
Twin-bulb halogen front headlights with electric adjustment	–	■	■	■	–	–
Bi-Xenon headlights with Adaptive Front-lighting System (AFS), headlight washer system and LED daytime running lights	–	□	□	□	■	■
Front fog lights with cornering function	–	■	■	■	■	■
Halogen Daytime Running Lights (DRLs)	■	–	–	–	–	–
LED Daytime Running Lights (DRLs)	–	■	■	■	■	■
LED taillights	–	■	■	■	■	■
Rear fog light	■	■	■	■	■	■
Black door handles	■	–	–	–	–	–
Body-coloured door handles	–	■	■	■	■	■
Black door mirrors	■	–	–	–	–	–
Body-coloured door mirrors	–	■	■	–	–	–
Gloss Black door mirrors	–	–	–	–	■	■
Gloss Red door mirrors	–	–	–	–	–	–
Gloss Black front grille frame	–	–	–	–	■	■
Gloss Red front grille frame	–	–	–	–	–	–
Electrically adjustable and heated door mirrors	■	■	■	■	■	■
Electrically folding door mirrors	–	△	■	■	■	■
Body-coloured bumpers with integrated mouldings	■	■	■	■	■	■
Exclusive FR front and rear bumpers	–	–	■	■	–	–
Exclusive CUPRA front and rear bumpers	–	–	–	–	■	■
Gloss black B and C pillars (not on Ibiza SC)	–	■	■	■	–	–
Tinted windows	■	■	■	■	■	■
Dark tinted rear windows	–	□	□	■	■	■

	IBIZA					
	SOL	SE Tech	FR Tech	FR Red Ed. Tech	CUPRA	CUPRA Black
EXTERIOR EQUIPMENT						
Rear wash/wipe	■	■	■	■	■	■
SEAT logo tailgate release	■	■	■	■	■	■
Twin exhaust pipes	–	–	■	■	–	–
Race-honed central exhaust	–	–	–	–	■	■
INFOTAINMENT						
FM/AM radio	■	■	■	■	■	■
Four speakers	■	–	–	–	–	–
Six speakers	–	■	■	■	■	■
Digital Audio Broadcasting (DAB) digital radio	■	■	■	■	■	■
Bluetooth® audio streaming and handsfree system	■	■	■	■	■	■
Media System Touch / 5.0" black and white touchscreen / USB port / SD card slot / Steering wheel mounted audio and phone controls	■	–	–	–	–	–
Media System Colour (Includes Media System Touch) / 5.0" colour touchscreen / AUX-in port / Steering wheel mounted audio and phone controls	–	–	–	–	■	–
Media System Plus (includes Media System Colour) / 6.5" Colour touchscreen with proximity sensor / MP3 compatible CD player / Bluetooth® Voice recognition	–	■	■	■	□	■
Navigation System (includes Media System Plus) / 3D map display with voice recognition / SD card slot x2	–	■	■	■	□	■
Full Link / MirrorLink™ / Apple CarPlay™ / Google Android Auto™	–	■	■	■	□	■
INTERIOR EQUIPMENT						
Driver and passenger sunvisor with covered mirror	■	■	■	■	■	■
Three cup holders in cabin	■	■	■	■	■	■
Front courtesy light	■	–	–	–	–	–
Front courtesy light with front reading light	–	■	■	■	■	■
Front door storage pockets	■	■	■	■	■	■
Illuminated boot	–	■	■	■	■	■
Exclusive flat-bottomed FR steering wheel and interior details	–	–	■	■	–	–
Exclusive flat-bottomed CUPRA steering wheel and interior details	–	–	–	–	■	■

	IBIZA					
	SOL	SE Tech	FR Tech	FR Red Ed. Tech	CUPRA	CUPRA Black
SEATS AND TRIM						
Height-adjustable driver's seat	■	■	■	■	■	■
Height-adjustable front passenger's seat with easy entry (SC only)	■	■	■	■	■	■
Height-adjustable front passenger's seat (5DR)	–	–	■	■	■	■
Two Height-adjustable front and rear headrests	■	■	■	■	■	■
Centre height-adjustable rear headrest (SC only)	■	■	■	■	■	■
Front seatback storage pockets	–	■	■	■	■	■
10.7 litre illuminated glovebox	■	■	■	■	■	■
CUPRA front sports seats	–	–	–	–	■	■
Drilled aluminium pedals	–	–	–	–	■	■
Leather steering wheel and gear knob	–	■	■	■	■	■
Split folding rear seats (60/40)	–	■	■	■	■	■
FUNCTIONAL AND MECHANICAL						
Air conditioning	■	■	■	■	■	■
Climate control	–	□	□	□	■	■
Rain-sensing wipers	–	△	■	■	■	■
SEAT Drive Profile	–	–	□	□	■	■
Dust and pollen filter	■	■	■	■	■	■
Electric front windows (one-touch with anti-squeeze)	■	■	■	■	■	■
Height and reach adjustable steering wheel	■	■	■	■	■	■
Electro-mechanical power steering (speed-sensitive)	■	■	■	■	■	■
Cruise control	■	△	■	■	■	■
Sports suspension	–	–	■	■	■	■
Auto-headlights	–	△	■	■	■	■
Coming & leaving home headlight function (manual)	–	△	■	■	■	■
12 volt power supply in centre console	■	■	■	■	■	■
Steering wheel-mounted gearshift paddles (DSG models only)	–	–	■	–	■	■
INSTRUMENT PANEL						
RPM counter	■	■	■	■	■	■
Trip computer	■	■	■	■	■	■
Outside temperature gauge	–	■	■	■	■	■
Digital clock	■	■	■	■	■	■
Instrument lighting with brightness control	■	■	■	■	■	■
Low fuel warning light	■	■	■	■	■	■
Lights-left-on warning buzzer	■	■	■	■	■	■
Gearshift indicator	■	■	■	■	■	■

	IBIZA					
	SOL	SE Tech	FR Tech	FR Red Ed. Tech	CUPRA	CUPRA Black
SAFETY AND SECURITY						
Driver and front passenger airbags	■	■	■	■	■	■
Front passenger airbag de-activation	■	■	■	■	■	■
Front side airbags	■	■	■	■	■	■
Active front head restraints	■	■	■	■	■	■
ABS	■	■	■	■	■	■
Electronic Stability Control (ESC) with Emergency Brake Assist (EBA) ²	■	■	■	■	■	■
Hill hold control	–	△	■	■	■	■
Tyre pressure monitoring	■	■	■	■	■	■
Multi-Collision Braking System	■	■	■	■	■	■
Automatic warning lights	■	■	■	■	■	■
Alarm (perimeter and interior monitoring) with back-up horn and tow-away protection	■	■	■	■	■	■
Electronic engine immobiliser	■	■	■	■	■	■
Two folding remote keys with remote window opening/closing function	■	■	■	■	■	■
Front seatbelt reminders	■	■	■	■	■	■
ISOFIX points in outer rear seats with Top Tether anchorage points	■	■	■	■	■	■
Remote central locking with deadlocks	■	■	■	■	■	■
Child locks on rear doors (not on Ibiza SC)	■	■	■	■	■	■
Three-point seatbelts on all rear seats	■	■	■	■	■	■
Locking wheel bolts	–	■	■	■	■	■
Anti-theft roof antenna	■	■	■	■	■	■
Visible VIN in windscreen	■	■	■	■	■	■

■ Standard □ Optional △ Optional as part of a pack – Not available

¹Not available on EcoTSI or Ecomotive engine.

²Models with 100PS and above also gain XDS (electronic differential lock system).

OPTIONAL EQUIPMENT

Ibiza

	IBIZA					
	SOL	SE Tech	FR Tech	FR Red Ed. Tech	CUPRA	CUPRA Black
COLOUR PACKS						
Titanium Pack: Includes titanium-coloured 17" 'Dynamic' machined alloy wheels, door mirrors and front grille frame	-	-	□	-	-	-
Black Pack: Includes black door mirrors, front grille frame and Black 16" 'Cartago' alloy wheels on SE or Black 17" 'Tagus' alloy wheels on FR	-	□	□	-	-	-
White Pack ^{1,4} : Includes silver 16" 'Cartago' alloy wheels, white door mirrors and front grille frame	-	□	-	-	-	-
WHEELS AND TYRES						
17" Tagus alloy wheels	-	-	□	-	-	-
Space-saving spare wheel (in lieu of tyre repair kit)	□	□	□	□	■	■

	IBIZA					
	SOL	SE Tech	FR Tech	FR Red Ed. Tech	CUPRA	CUPRA Black
EXTERIOR EQUIPMENT						
White non-metallic paint	□	□	□	-	-	-
Emoción Red non-metallic paint	□	□	□	-	■	■
Metallic paint	□	□	□	■	□	□
Dark tinted rear windows	-	□	□	■	■	■
INFOTAINMENT						
Media System Plus: / 6.5" Colour touchscreen with proximity sensor / SD card slot x2 / Bluetooth® voice control / MP3 CD player Requires Full Link, Navigation System or SEAT Sound System	-	■	■	■	□	■
Navigation System (Includes Media System Plus) ³ / 3D map display with voice recognition	-	■	■	■	□	■
Full Link (Requires Media System Plus) ³ / MirrorLink™ / Apple CarPlay™ / Android Auto™	-	■	■	■	□	■
SEAT Sound System (Requires Media System Plus) ³ / 6 high quality speakers / Boot mounted subwoofer / Amplifier	-	□	□	□	-	-

	IBIZA					
	SOL	SE Tech	FR Tech	FR Red Ed. Tech	CUPRA	CUPRA Black
INTERIOR EQUIPMENT						
Ambient Lighting	-	□	□	□	□	□
SEATS AND TRIM						
Alcantara Upholstery Pack: Includes part-alcantara sports seats and centre rear headrest	-	-	□	-	□	□
FUNCTIONAL AND MECHANICAL						
Convenience Pack: Includes auto-headlights, coming & leaving home headlight function, rain-sensing wipers, auto-dimming rear view mirror and electrically folding door mirrors	-	□	■	■	■	■
Driver Pack ² : Includes cruise control, Hill Hold Control and tiredness recognition system	■	□	■	■	■	■
SEAT Drive Profile: Choose from two driving modes; Comfort and Sport. Both modes change the parameters of steering assistance and suspension	-	-	□	□	■	■
Climate control	-	□	□	□	■	■
Rear view camera	-	□	□	□	-	-
Rear parking sensors	-	□	□	□	□	□
Bi-Xenon headlights: Includes Adaptive Front-lighting System (AFS) and headlight washer system	-	□	□	□	■	■
Panoramic glass sunroof ¹	-	□	□	□	□	□

■ Standard □ Optional ▲ Optional as part of a pack - Not available

¹Not available with SE Technology EcoTSI and Ecomotive engines.

²Standard on SE Technology 1.0 EcoTSI 95PS engine.

³The price for Media System Plus will only be charged once.

⁴White Pack not available with Non-Metallic White paint or Nevada White Metallic Paint.

TECHNICAL DATA

Ibiza

ENGINE

	1.0 75 PS	1.2 TSI 90 PS	1.2 TSI 110 PS	1.0 EcoTSI 95 PS	1.0 EcoTSI 110 PS DSG-auto	1.4 EcoTSI 150 PS	1.8 TSI 192PS	1.4 TDI 75 PS Ecomotive	1.4 TDI 105 PS
	(SOL and SE Tech)	(SE Tech and FR Tech)	(FR Tech and FR Red Ed. Tech)	(SE Tech)	(FR Tech)	(FR Tech)	(CUPRA/CUPRA Black)	(SOL and SE Tech)	(FR Tech)
Type (cylinders / valves per cylinder)	3 / 4	4 / 4	4 / 4	3 / 4	3 / 4	4 / 4	4 / 4	R3 / 4	R3 / 4
Displacement (cc)	999	1197	1197	999	999	1395	1798	1422	1422
Bore and stroke (mm)	74.5 × 78.4	71 × 75.6	71 × 75.6	74.5 × 76.4	74.5 × 76.4	74.5 × 80	82.5 × 84.2	79.5 / 95.5	79.5 / 95.5
Compression ratio	10.5	10.5	10.5	10.5	10.5	10	9.6	16.2	16.2
Maximum power (PS / KW / rpm) ¹	75 / 55 / 6200	90 / 66 / 4400	110 / 81 / 4600	95 / 70 / 5000	110 / 81 / 5000	150 / 110 / 5000	192 / 141 / 4300	75 / 55 / 3500	105 / 77 / 3500
Maximum torque (Nm / lb.ft / rpm)	95 / 70 / 3000	160 / 118 / 1400	175 / 129 / 1550	160 / 118 / 1500	200 / 148 / 2000	250 / 184 / 1500	320 / 236 / 1450	210 / 155 / 1750	250 / 184 / 1750
Fuel supply system	Multi-point injection	TSI-Direct Injection	TSI-Direct Injection	TSI-Direct Injection	TSI-Direct Injection	TSI-Direct Injection	TSI-Direct Injection	Common Rail direct injection	
Fuel type	Unleaded Petrol	Unleaded Petrol	Unleaded Petrol	Unleaded Petrol	Unleaded Petrol	Unleaded Petrol	Unleaded Petrol	Diesel	Diesel
Emission control	EU6	EU6	EU6	EU6	EU6	EU6	EU6	EU6+DPF	EU6+DPF
Start/Stop System				✓	✓	✓	✓	✓	✓
Energy Recovery System				✓	✓	✓	✓	✓	✓
Aero Pack				✓				✓	

PERFORMANCE

Maximum speed ² (km/h)	172	184	197	191	197	220	235	173	192
Maximum speed ² (mph)	107	114	122	119	122	137	146	107	119
Acceleration 0-62mph (s)	14.3 14.3	10.7 10.7	9.1 9.1	10.4 10.4	9.3 9.3	7.6 7.6	6.7	13.0 13.5	9.9 9.9

FUEL CONSUMPTION³ (SC | 5DR)

Urban mpg	43.5 43.5	44.1 44.1	41.5 41.5	55.4 55.4	53.3 53.3	47.1 47.1	36.2	68.9 67.3	64.2 64.2
Urban (l/100km)	6.5 6.5	6.4 6.4	6.8 6.8	5.1 5.1	5.3 5.3	6.0 6.0	7.8	4.1 4.2	4.4 4.4
Extra-urban mpg	62.8 62.8	70.6 70.6	65.7 65.7	76.3 76.3	72.4 72.4	68.9 68.9	53.3	85.6 83.1	78.5 78.5
Extra-urban (l/100km)	4.5 4.5	4.0 4.0	4.3 4.3	3.7 3.7	3.9 3.9	4.1 4.1	5.3	3.3 3.4	3.6 3.6
Combined mpg	54.3 54.3	57.6 57.6	54.3 54.3	67.3 67.3	64.2 64.2	58.9 58.9	45.6	78.5 76.3	72.4 72.4
Combined (l/100km)	5.2 5.2	4.9 4.9	5.2 5.2	4.2 4.2	4.4 4.4	4.8 4.8	6.2	3.6 3.7	3.9 3.9

CO₂ EMISSION (SC | 5DR)

CO ₂ (g/km)	118 118	116 116	119 119	98 98	102	112 112	145	93 95	100 100
------------------------	-----------	-----------	-----------	---------	-----	-----------	-----	---------	-----------

TRANSMISSION

Gearbox type	5 speed manual	5 speed manual	6 speed manual	5 speed manual	7 speed automatic	6 speed manual	6 speed manual	5 speed manual	5 speed manual
Ratios	I 3.643	3.769	3.615	3.769	3.765	3.769	3.769	3.778	3.778
	II 1.955	1.955	1.947	1.955	2.273	2.087	2.087	1.944	1.944
	III 1.270	1.281	1.281	1.281	1.531	1.469	1.469	1.185	1.185
	IV 0.959	0.927	0.927	0.927	1.122	1.088	1.150	0.816	0.816
	V 0.796	0.740	0.740	0.740	1.176	1.108	1.167	0.625	0.625
	VI –	–	–	–	0.951	0.912	0.975	–	–

¹ The maximum power output figures are quoted in PS (or Pferdestärke, which is the metric equivalent of horsepower).

To convert from metric to imperial horsepower, divide the PS by 1.0139.

² Where law permits.

³ Official fuel consumption according to EU Directive 99/94. The consumption calculation according to 1999/100/EC is based on the actual unladen weight of the vehicle. Additional specifications can lead to a higher weight class and hence to consumption figures of this higher weight class.

The driving style, road traffic conditions, environmental influences and vehicle condition can in practice lead to consumption figures which may differ from those calculated within this standard.

TRANSMISSION

	1.0 75 PS	1.2 TSI 90 PS	1.2 TSI 110 PS	1.0 EcoTSI 95 PS	1.0 EcoTSI 110 PS DSG-auto	1.4 EcoTSI 150 PS	1.8 TSI 192PS	1.4 TDI 75 PS Ecomotive	1.4 TDI 105 PS
	(SOL and SE Tech)	(SE Tech and FR Tech)	(FR Tech and FR Red Ed. Tech)	(SE Tech)	(FR Tech)	(FR Tech)	(CUPRA/CUPRA Black)	(SOL and SE Tech)	(FR Tech)
	VII –	–	–	–	0.795		0.795	–	–
	R 3.616	3.181	3.181	3.181	4.167	4.549	3.990	3.600	3.600
Group 1 ratio	4.812	3.625	3.933	3.625	4.438	3.450	3.238	3.389	3.389
Group 2 ratio	–	–	–	–	3.227	2.760	2.615	–	–
Group 3 ratio	–	–	–	–	4.176	–	–	–	–
Speed at 1000rpm in IV/V/VI/VII (mph)	14.9/17.9/–/–	20.4/25.5/–/–	18.8/23.5/28.5/–	20.4/25.5/–/–	13.8/18.1/22.3/26.7	18.3/22.4/27.3/–	18.5/22.5/26.9/–	24.8/32.4/–/–	24.8/32.4/–/–

CHASSIS

Front suspension	Independent McPherson type with coil springs, hydraulic dampers and stabilising bar								
Rear suspension	Semi-rigid rear axle with coil springs and hydraulic dampers								
Steering system	C-EPS (Column Electric Power Steering)								
Turning circle diameter [wall to wall] (m)	10								

BRAKING SYSTEM

Anti-lock Braking System (ABS)	Yes	Yes	Yes	Yes	Yes	Yes	Yes	Yes	Yes
Type (front/rear)	Ventilated disc/drum	Ventilated disc/drum	Ventilated disc/disc	Ventilated disc/disc	Ventilated disc/disc	Ventilated disc / disc	Ventilated disc/disc	Ventilated disc/drum	Ventilated disc/disc
Front (mm)	256 × 22	256 × 22	288 × 25	256 × 22	288 × 25	288 × 25	310 × 25	256 × 22	288 × 25
Rear (mm)	200 × 40	200 × 40	230 × 9	230 × 9	230 × 9	230 × 9	230 × 9	200 × 40	23 × 9

WHEELS

Rims and tyres	See Standard Equipment details								
----------------	--------------------------------	--	--	--	--	--	--	--	--

DIMENSIONS

Length / width / height (mm)	SC: S / SE / CONNECT: 4043 / 1693 / 1428 FR / FR Red Edition: 4066 / 1693 / 1424 5DR: S / SE / CONNECT: 4061 / 1693 / 1445 FR / FR Red Edition: 4082 / 1693 / 1441								
Wheelbase (mm)	2469	2469	2469	2469	2469	2469	2469	2469	2469
Track front / rear (mm)	1465 / 1457	1465 / 1457	1449 / 1441	1465 / 1457	1449 / 1441	1449 / 1441	1449 / 1441	1465 / 1457	1465 / 1457
Boot capacity (l)	SC: 292 5DR: 292	SC: 292 5DR: 292	SC: 292 5DR: 292	SC: 292 5DR: 292	SC: 292 5DR: 292	SC: 292 5DR: 292	SC: 292 5DR: 292	292	SC: 292 5DR: 292
Fuel tank capacity (l)	45	45	45	45	45	45	45	45	45

WEIGHTS

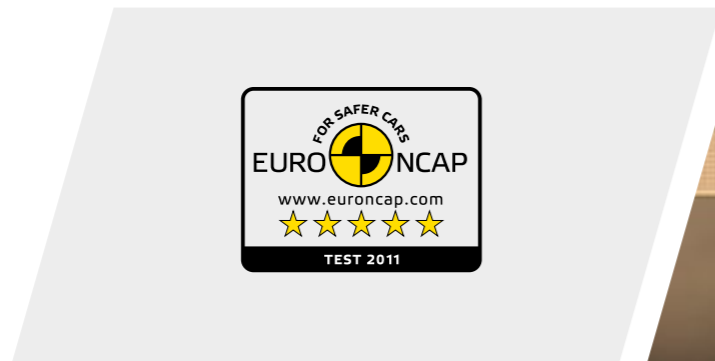
Kerb weight [with driver] (kg)	1043 / 1043	1089 / 1089	1102 / 1102	1095 / 1095	1140 / 1140	1143 / 1143	1260	1155 / 1205	1161 / 1161
Permissible gross weight (kg)	1530 / 1530	1580 / 1580	1590 / 1590	1590 / 1590	1630 / 1630	1630 / 1630	1700	1630 / 1670	1650 / 1650
Max. towing weight without brake (kg)	520 / 520	540 / 540	550 / 550	500 / 500	570	570 / 570	N/A	570 / 600	580 / 580
Max. towing weight with brake 8% (kg)	1000	1100	1100	500	1100	1200	N/A	1100	1200
Max. towing weight with brake 12% (kg)	800	1000	1000 1000	500	1000	1200	N/A	1000	1100

TECHNICAL DATA

Safety



AIRBAGS.
It's great to be on the road, surrounded by friends. And it's even better when you're all surrounded by safety. The SEAT Ibiza has front airbags as standard.



SAFETY FIRST.
A maximum 5-star Euro NCAP* safety rating and the most advanced safety features proves it's one of the safest cars in its class. For detailed information go to www.euroncap.com, the 5 star EuroNCAP rating was awarded to the SEAT Ibiza 5DR.



FOG LAMPS WITH CORNERING FUNCTION.
When it comes to giving you help when you need it most, we light the way.



SC

5DR

Dimensions



MULTI - COLLISION BRAKING SYSTEM.
In the unlikely case of an accident, this system brakes the car avoiding or reducing the impact of subsequent collisions. Standard on all Ibiza trims.

REAR VIEW CAMERA.
Located in the rear bumper, the camera will show you what the rear view mirrors can't, making backing-up or parking in tight spots a kid's game. Optional on Ibiza SE, FR and FR Red Edition.

Engines availability

	SOL	SE Tech	FR Tech	FR Red Ed. Tech	CUPRA	CUPRA Black
PETROL						
1.0 75 PS	■	■	-	-	-	-
1.2 TSI 90 PS	-	■	-	-	-	-
1.0 EcoTSI 95 PS	-	■	-	-	-	-
1.2 TSI 110 PS	-	-	■	■	-	-
1.0 EcoTSI 110 PS DSG Start/Stop	-	-	■	-	-	-
1.4 EcoTSI 150 PS Start/Stop	-	-	■	-	-	-
1.8 TSI 192PS	-	-	-	-	■	■
DIESEL						
1.4 TDI 75 PS Ecomotive Start/Stop	■	■	-	-	-	-
1.4 TDI 105 PS Start/Stop	-	-	■	-	-	-

* Tested in 2011. For detailed information go to www.euroncap.com

CUSTOMISE SEAT Accessories.

Let your car reflect your personal style, equipped for the life you lead. Specifically designed and fully tested, all SEAT Genuine Accessories come with a two-year warranty* (unless otherwise stated), extended to three yearst when bought and fitted before registration of a brand new vehicle.

There's a range of Accessory packs to suit every lifestyle, as well as individual accessories (including those in the Accessory packs) from styling accessories to the more practical safety accessories. For full details visit seat.co.uk/accessories or ask your dealer for a copy of the 'Customise SEAT Accessories' range brochure.

2 **3**
TWO-YEAR WARRANTY ON ALL* ACCESSORIES **THREE-YEAR WARRANTY ON FITTED ACCESSORIES† (BEFORE REGISTRATION)**



SEAT ACCESSORY PACKS

Styling pack

Make your SEAT as individual as you with these super stylish exterior styling accessories, designed especially for your model – and fitted and painted by your SEAT dealer.

STYLING pack
 / Tailgate Spoiler
 / Side Skirts



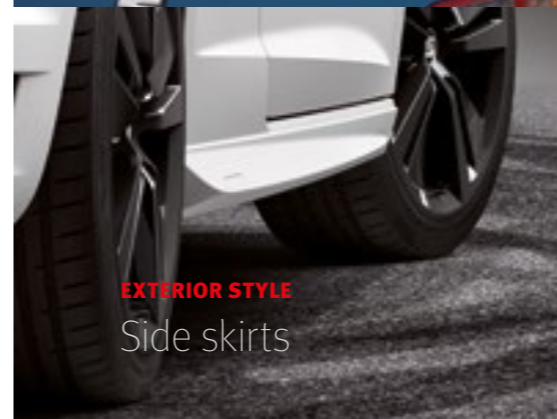
EXTERIOR STYLE

Tailgate spoiler



EXTERIOR STYLE

Side skirts



TOURING

Travel bag

SEAT ACCESSORY PACKS

Travel pack – Essentials

Wherever you're heading, when you're equipped with the right, practical accessories, you can enjoy the journey even more.

TRAVEL PACK – ESSENTIALS
 / Umbrella
 / Vehicle Safety Kit
 / Emergency Phone Charger
 / Torch
 / Folding Shovel
 / Travel Bag



SAFETY

Torch



TOURING

Umbrella



SAFETY

Folding shovel



INFOTAINMENT

Emergency phone charger

* Applies to SEAT Genuine Accessories only. † Applies to SEAT Genuine Accessories only. Up to 2-year warranty on others.

SEAT ACCESSORY PACKS

Gadget pack

A pack full of the latest practical SEAT accessories gadgets to keep your car organised and functional, including the latest Espresso machine.

GADGET PACK

- / Headrest Clothes Hanger
- / Tablet Seat Mount
- / Espresso Machine
- / Hook for Headrest



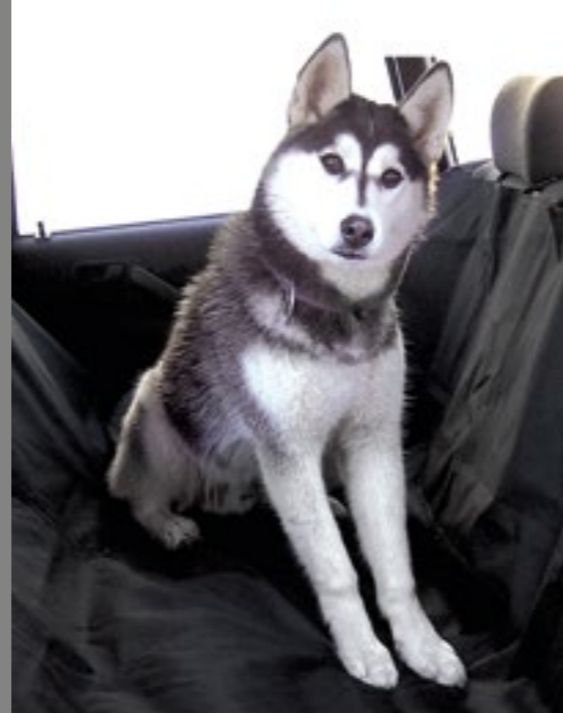
SEAT ACCESSORY PACKS

Pet pack

Keep your best friend happy in the back with this grille and versatile tailored boot tray.

PET PACK

- / Dog guard
- / Protective Luggage Lining or Seat Cover



SEAT ACCESSORY PACKS

Protection pack

Love your SEAT and it will love you back. Dirt or dog hairs, no problem. Mud and mess? Sorted. Choose this accessories pack, get on with the way you live, knowing your SEAT is protected for its lifetime.

PROTECTION PACK

- / Loadliner
- / Mudflaps
- / Rubber Mats



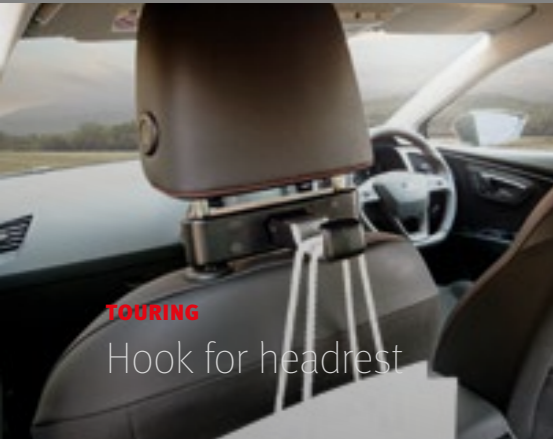
SEAT ACCESSORY PACKS

Adventure pack

Wherever you're heading, our Adventure pack gives you a hassle-free system with roof bars and bike system, as well as peace of mind with the vehicle safety kit and protective boot tray.

ADVENTURE PACK

- / Loadliner
- / Surf, Ski or Bike Holder
- / Safety Kit
- / Roof Bars



TOURING

Hook for headrest



TOURING

Tablet seat mount



PROTECT AND CARE

Dog guard



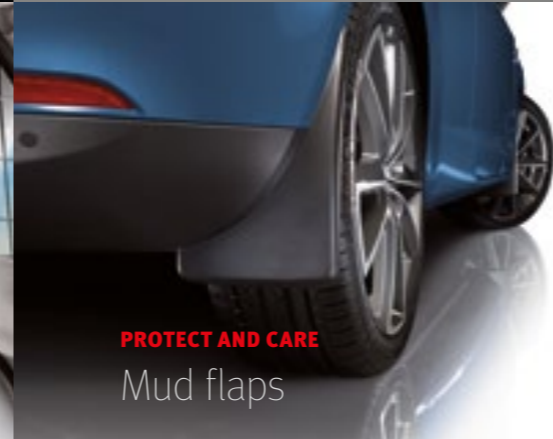
TOURING

Espresso machine



PROTECT AND CARE

Protective luggage lining



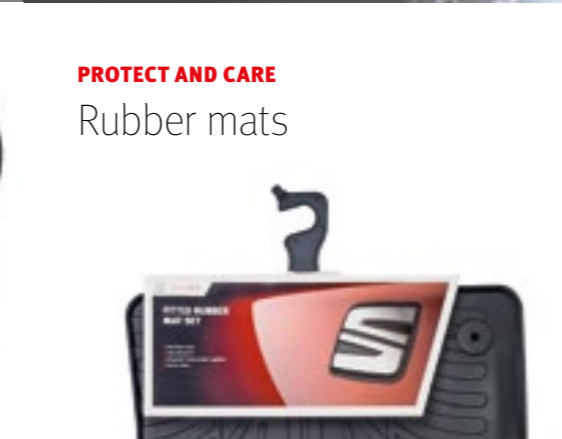
PROTECT AND CARE

Mud flaps



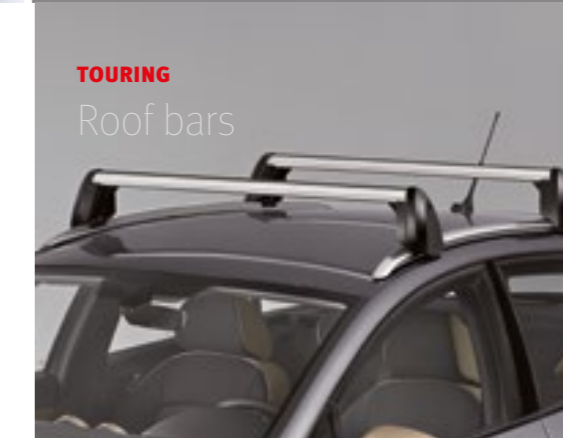
PROTECT AND CARE

Non-slip loadliner



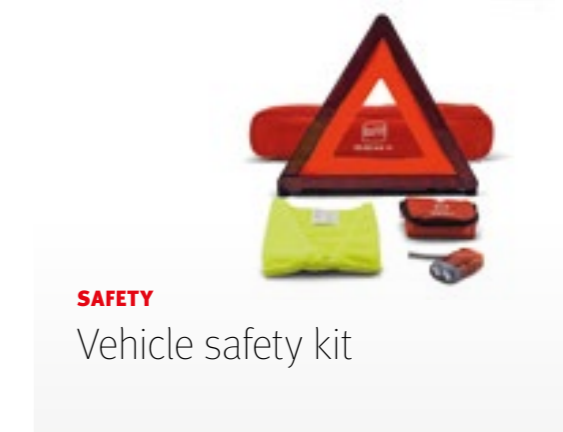
PROTECT AND CARE

Rubber mats



TOURING

Roof bars



SAFETY

Vehicle safety kit



TOURING

Bike holder



CAREFREE

Ownership.

Carefree ownership isn't just about caring for your car. It's also about helping you enjoy your seat experience more, in every way, over every mile you drive.

/ It's about fixed price servicing and fixed price Service Plans, in place to smooth the financial road throughout your SEAT journey.

/ It's helping you give your SEAT the look and style that makes it all your own, easily and affordably, with all the most popular accessories available to order online 24/7.

/ It involves keeping you safe, with the right tyres always at competitive prices.

/ It's peace of mind from Extended Warranties that take the worry out of unexpected repairs.

/ And it's about giving you three years of SEAT's accident management cover absolutely free.

All together, it's all you need to give you Carefree Ownership of your SEAT.



CAREFREE

OWNERSHIP

YOU'LL KNOW HOW MUCH

With our fixed price servicing and maintenance.

Your SEAT is special to you, and deserves special treatment when it's time for a service or repair. So put it in the hands of people who know and care about your car as much as you do, your SEAT Dealer.

The benefits at a glance

- / Clarity on the cost with our service and maintenance fixed prices.
- / Easy, free drop-off and collection or a courtesy lift to your home or work, or a low-cost, insured loan car.
- / SEAT recommended video service report.
- / Wash and vacuum with every service.
- / Option to book your service online 24/7.
- / FREE UK and European Roadside Assistance worth £245 for all cars 2-15 years, when a service is booked online. This includes cover from the moment you leave home to the moment you get back.

Plus all the SEAT standards you would expect

- / SEAT technicians, using the latest diagnostic technology.
- / Check of SEAT software and product enhancements.
- / SEAT-approved parts fitted complete with two year warranty*.
- / A SEAT stamp in the service book.
- / National network of Dealers.

SEAT.CO.UK/SERVICE

SEAT Service Plans

Our Service Plans cover so much for such a small monthly outlay, they really make a lot of sense.

Transparency

You can easily plan your car's service requirements and either pay for the Service Plan in full or spread the cost with affordable 18 monthly payments of £21.00 for 24 months cover. It's worry-free and ensures that you're taking the best care possible of your car, today and tomorrow.

Savings

There's no better way to enjoy peace of mind whilst you care for your car.

- / You can choose either two or three year Service Plan.
- / Plan is protected from inflation.
- / Residual value enhanced with a SEAT stamp in the service book.
- / Plan is transferable, when fully paid, to another owner.
- / No tie-in with a specific Dealership, choose any SEAT Dealer from the nationwide network.

Terms and conditions apply.

*Excludes wear and tear items.

EXTENDED WARRANTY

Extend your peace of mind.

When you buy a new SEAT from a SEAT Dealer, your new car is covered by a three year/60,000 miles manufacturer warranty. And if you take out a SEAT Extended Warranty before your new car is registered, you'll get exactly the same level of cover for up to five years, at extremely competitive prices. Plus it's fully transferable to the new owner (and subsequent owners) should you sell your car – enhancing the resale value of the car.

Taking out a SEAT Extended Warranty is easy, you can choose the warranty to last until the end of the 4th year/up to 75,000 miles or until the end of the 5th year up to 90,000 miles (age or mileage, whichever comes soonest).

You'll enjoy all the following:

- / Exactly the same cover as the original manufacturer warranty.

- / No limit to the number of claims, no excess and no need to pay and reclaim (within the UK)

- / Repairs carried out by a member of the SEAT authorised network using SEAT genuine parts.

- / Simple process to have the repairs done. Just contact your SEAT Dealer and take your policy with you when you drop your car in.

These Extended Warranties are only available at the time of ordering a new SEAT.

INSURANCE

SEAT's free accident and repair cover.

Did you know that your insurer may not guarantee to use SEAT approved repairers or parts? With so much complex safety technology in your SEAT you won't want to risk compromising your car with parts that have not been made specifically for your SEAT. As a SEAT customer you are entitled to three years' FREE accident and repair cover. Our cover works alongside your main motor insurance policy, giving you and your car additional protection.

Benefits at a glance

- / A dedicated claims manager to manage your claim from start to finish.

- / Guaranteed use of a SEAT approved repairer and SEAT trained technicians.

- / Receive a repair guarantee, which includes a two year parts warranty and three year paint warranty.

- / Legal expenses cover to help recover any uninsured losses.

SEAT-INSURANCE.CO.UK



SOLUTIONS PERSONAL CONTRACT PLAN (PCP)

Making your budget go the extra mile

Solutions (PCP) is a flexible finance package that really puts you in the driving seat. Solutions offers flexibility – from your deposit and monthly repayments to what you do with your SEAT at the end of the agreement.

By paying a small deposit (as little as a single month's repayment) over a repayment period from 18 months up to four years, you can enjoy a plan individually suited to your needs and monthly budget.

Solutions takes away the worry about depreciation because a proportion of the value is left until the end of the agreement (the optional final payment), which acts as a guaranteed minimum future value. By doing this you can lower your monthly repayments or make your budget go even further with a higher spec.

The options are wide open with Solutions.

DECISION TIME

1. Choose a repayment period and annual mileage.
2. Pay your deposit which can be made up of cash or a part exchange.
3. Agree the number of repayments.

Setting the deposit and repayment term helps create the right combination for a monthly payment budget.

AT THE END OF YOUR AGREEMENT YOU HAVE 3 OPTIONS

1. Part exchange your existing car for a new SEAT on a Solutions (PCP) contract (subject to status).
2. Pay the optional final repayment and keep your SEAT.
3. Hand the car back (subject to terms and conditions).

IMPORTANT INFORMATION TO CONSIDER

- / You may end your agreement earlier than the full term. However, depending how far you are in to your agreement will affect the final amount left to pay.

- / If you exceed the anticipated mileage agreed at the start of your agreement and intend to return the vehicle then excess mileage charges will apply.

- / It is important to keep the vehicle in good condition as this will affect the value of the vehicle. You may be charged for any damage that goes beyond fair wear and tear should you choose to return your vehicle.

COST OF YOUR CAR

DEPOSIT

As little as one repayment

AMOUNT TO FINANCE

Divided into any choice of 18 to 48 fixed repayments

ADDITIONAL FINAL PAYMENT

You have three choices at the end of your agreement



An offer of finance depends on certain conditions. Finance subject to status. Available to 18s and over. Terms and conditions apply. SEAT Finance.



SEAT is committed to a policy of continuous product development and reserves the right to make changes to specifications, colours and prices without notice. The information in this brochure can therefore be given as guidance only. While SEAT makes every effort to ensure that specifications are accurate at the time of publication, you should always check with your authorised SEAT Partner for the latest information. Due to limitations of the printing process the colours reproduced in this brochure may vary slightly from the actual paint colour and material. This vehicle and all its parts, as well as the original spares, were designed according to the Legal Regulations governing the prevention and minimisation of Environmental Impact, through the use of recycled/recyclable materials, with measures taken to achieve suitable recycling for the conservation and improvement of environmental quality.

12/2016. Printed in the UK.

seat.co.uk