

The new SEAT Mii electric.

Model, pricing and specification.





Contents.

05

**Created in
Barcelona.**

07

**Why go
electric?**

19

**Trim &
specification.**

23

**Pick your
colour.**

11

**Safety &
technology.**

12

Technology.

25

**Equipment &
option prices.**

28

**Technical
data.**

14

**Power your
journey.**

17

**FAQs &
mythbusting.**

31

**VED &
Benefit in Kind.**

32

**Warranties &
service plans.**



Created in Barcelona.

1953. The first SEAT rolls off our Barcelona production line and a whole country starts moving. More than 60 years later and we're moving people all over the world.

But Barcelona still inspires us. Its creative spirit runs through our veins. Feeds into every car we produce. (In fact, 50% of the energy we use to make our cars comes direct from Mediterranean sunshine). This is a city that never stops. And neither will we. Why? Because you have places to be.



Why go electric?

When it comes to great design, there's no such thing as normal. Introducing the new SEAT Mii electric, the small city car with an even bigger personality.

Discover the benefits of electric driving with SEAT's first all-electric vehicle, the Mii electric. Packed full of power with minimal recharge time, the Mii electric is ready to go the distance when you are.

- The 100% electric, eco-friendly car that accelerates to 31mph in only 3.9 seconds
- A range of up to 161 miles with combined city and motorway driving and up to 223 miles with 100% city driving*
- Its compact size helps you simplify every day city driving, from easily finding parking spots to entering emission-free zones

*WLTP range of up to 161 miles with combined city and motorway driving and up to 223 miles with 100% city driving.

Model shown: Mii electric in Deep Black metallic paint.

Why go electric?

The new SEAT Mii electric.



Range.

161 miles (WLTP)



Speed.

0-31mph = 3.9 seconds



Charge.

0-80%:
- 16 hrs 3 pin domestic
- 4 hrs wallbox
- <1hr rapid charge at public charging station



Running cost.

Pence per mile = 3.3p



Charge cost.

£5.29 for full battery*

*Charge cost is based on the current average electricity unit cost per kWh set by UK Power (£0.143p). Figures are subject to change.





Safety & technology

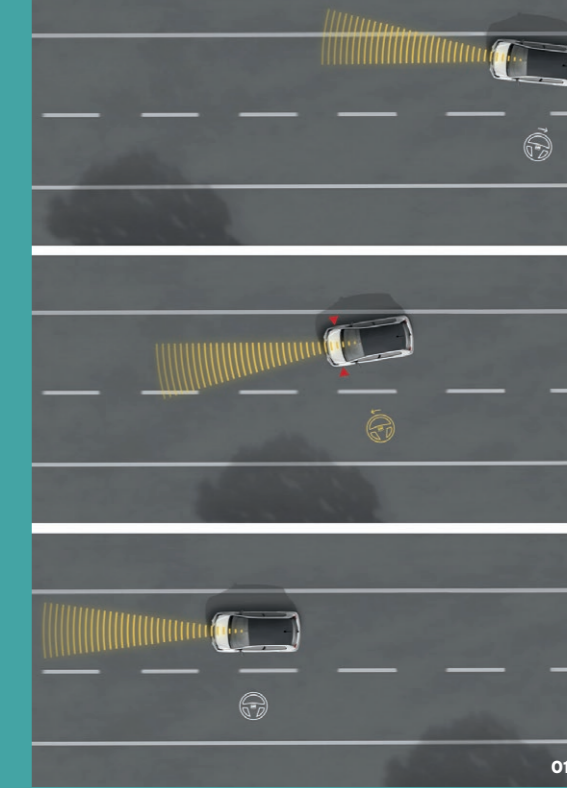
Moving in new ways, safely.

The new SEAT Mii electric was developed for the doers and the thinkers. It's for those who want to live their best life possible, in the best world possible.

Moving in new ways, safely with lane assist, which uses corrective steering to keep your car in its lane and traffic sign recognition, which displays important road information directly on the map. The rain sensor ensures good visibility at all times, while the rear parking sensor makes challenging parking spaces a breeze.

- 01.** Lane assist.
- 02.** Traffic sign recognition*.
- 03.** Rain sensor.
- 04.** Rear parking sensor.

*Traffic sign recognition, is used in conjunction with the Drive Mii app.



01



02



03



04

Be ready for tomorrow.

SEAT CONNECT.

On the go? Manage your car and battery from your smartphone, so you can be ready to go before you even leave the house.

The new SEAT Mii electric is the first SEAT model to feature SEAT CONNECT, the app that puts a whole host of functions at your fingertips. Use the app to remotely set the interior temperature before you leave the house on a cold winter's morning, programme charging times to suit your routine, locate your car in a busy car park.

The SEAT connect app will be available to download in Quarter 1 2020.



- Driving data
- Parking position
- Vehicle status
- e-Manager
- Remote acclimatisation
- Departure times

Services and functionality

SEAT CONNECT comes as standard with every Mii electric with all services and functionality available with a 10 year subscription at which point you can renew free-of-charge.

The app allows you to control lots of useful functions of your Mii electric.

Generation 1: Driver assistance

Overview

Driving data	Displays your personal driving data and gives you the opportunity to control and optimise your electric consumption
Parking position	Your Mii electric stores its location and using the navigation in the SEAT CONNECT app, allows you to quickly find your car
Remote climatisation	You can remotely select your car's temperature whether it's charging or not, automatically deciding whether to activate air conditioning or heating to achieve your chosen climate. Minimum 20% battery is required
Departure times	Setting departure times allows your car to control the activation of charging times and climatisation. It can even choose a time when there is a more favourable tariff
Vehicles stats	Access information about remaining range, battery charge status or service information, plus gain peace of mind knowing that the doors are locked and lights are off
e-manager	Remotely can start and stop the charging process, and define the charging behaviour

13 **The new SEAT Mii electric.** Model, pricing and specification list.





Power your journey

Everything you need to know about charging the Mii electric.

Charging at home.

Charging your Mii electric at home is likely to become part of your every day routine, so we've made it simple.

There are two options for home charging, either via a traditional 3-pin plug or a specially installed wallbox (The Mode 3 DC cable is standard equipment).

Pod Point is SEAT's recommended supplier to install a wallbox at your home and guide you through the complete home charging journey, from a pre-installation consultation to managing the home grant. A full demonstration will make sure you understand how to charge your Mii electric using your new Pod Point wallbox.

Know your power supplies

AC – Alternating Current

DC – Direct Current

Why do we recommend a wallbox is installed to charge your Mii electric?

While a three-pin socket can charge your Mii electric at home, a home wallbox is recommended due to the high energy demands and the significantly faster charge time. A 7kW wallbox can charge your Mii electric three times faster than with a three-pin plug. A home wallbox installed by an accredited installer like Pod Point ensures that your car receives a full night of uninterrupted fast charge.

Are Pod Point units eligible for the OLEV grant?

Yes, all home charging wallboxes are eligible for the £500 OLEV EVHS grant. See pod-point.com for further information.

Charging on the go.







While you're out on the road, you can choose from a number of public charging points to top up your Mii electric.

Combined charging system (CCS)

AC & DC rapid charging, is available at most public charging stations. Rapid chargers are the fastest way to charge an EV vehicle and often found in motorway services or in locations close to main roads. The Mii electric is equipped with CCS (combined charging system), which supplies high power direct or alternating (DC/AC) to charge a battery to 80% quickly. Mii electric allows for a maximum of upto 40 kW DC charge and will recharge the battery to 80% in 1 hr.

Regenerative braking

This is the recovery of energy usually lost when braking, optimising braking energy to prolong the battery life and not depreciate your range.

Charge type	Mode	Source	Power	Amps	Charge time (80% charge*)
	Mode 2 	Mains charging (Domestic 3-pin home plug)	2.3 kW AC	10A	13-16 hrs
	Mode 3 	Home wallbox and public / work charge point	7.2 kW AC	32A	4 hrs
	Mode 4 	Rapid charge (Combined Charge System [CCS])	40 kW DC / 7.2 kW AC	32A	1 hr

*Once the charging reaches 80%, the charging speed will slow down in order to reduce the heat and protect the battery's longevity.



FAQs & mythbusting

Joining the buzz.

Electric vehicles (EVs) are slow and not fun to drive.

Unlike conventional internal combustion engines (ICE), where there is a lag in reaching maximum torque as the engine rises relatively slowly to its maximum threshold, maximum torque is produced instantly with electric vehicles. The new SEAT Mii electric goes from 0-31 mph in 3.9 seconds.

EVs cost so much more than an ICE vehicle, so why buy?

While the initial purchase cost of an EV can be higher compared to equivalent petrol or diesel powered vehicles, this is offset by substantially lower running costs over the vehicle's lifetime.

EVs all look strange.

The design of Mii electric is based on the well-known Mii, but updated with new connected technologies, exterior highlights and a refreshed interior and a whole new battery powertrain.

There aren't enough public charging points in the UK.

With new charge points being added daily, the UK's charging infrastructure is continuously expanding to meet the growing demand for EVs. Zap Map is a great website (zap-map.com) and app that helps you locate suitable chargers are situated across the UK.

You cannot charge an electric car in the rain.

This is a myth. You can charge your electric car in the rain with no fear of electric shocks or damage to the car. Both the car and the charger itself have several levels of protection for these cases. In the same way, it's also completely safe to take your electric car through all types of car washes.

Once you factor in the construction of the car and all of the logistics you end up with the same CO₂ impact as a petrol or diesel car.

Although some of the CO₂ savings by an electric vehicle are offset by higher emissions during its production, it still has a lower carbon footprint than the standard internal combustion vehicle.

They run out of charge too quickly.

Things are changing quickly in the electric car world. Whereas the furthest an electric hatchback could travel per charge in 2010 was 70-100 miles, The new SEAT Mii electric has a range of 161 miles.

For example, if the average daily commute is only 20-25 miles, this means you would only need to charge the Mii electric once a week. It takes four hours on a standard home wallbox or a public charge point to get to 80% of battery on a Mii electric (giving you over 120 miles of range).

What is the estimated cost of charging a Mii electric from zero charge to 100%?

The average overnight electricity rate is approximately 14.37p per kWh. This means that charging a Mii electric could cost only around £5.29, or about 3.3p per mile.

Please visit www.seat.co.uk for more details.



Model shown: Mii electric in Chester Blue metallic paint with Deep Black contrast roof and door mirrors.

Trim & specification

The new Mii electric.

Ready when you are.

£19,300*

The new SEAT Mii electric has a new urban feel design of the dash and chrome detailing with a 5" colour display, 6 speaker radio, handy smartphone holder and ambient lighting.

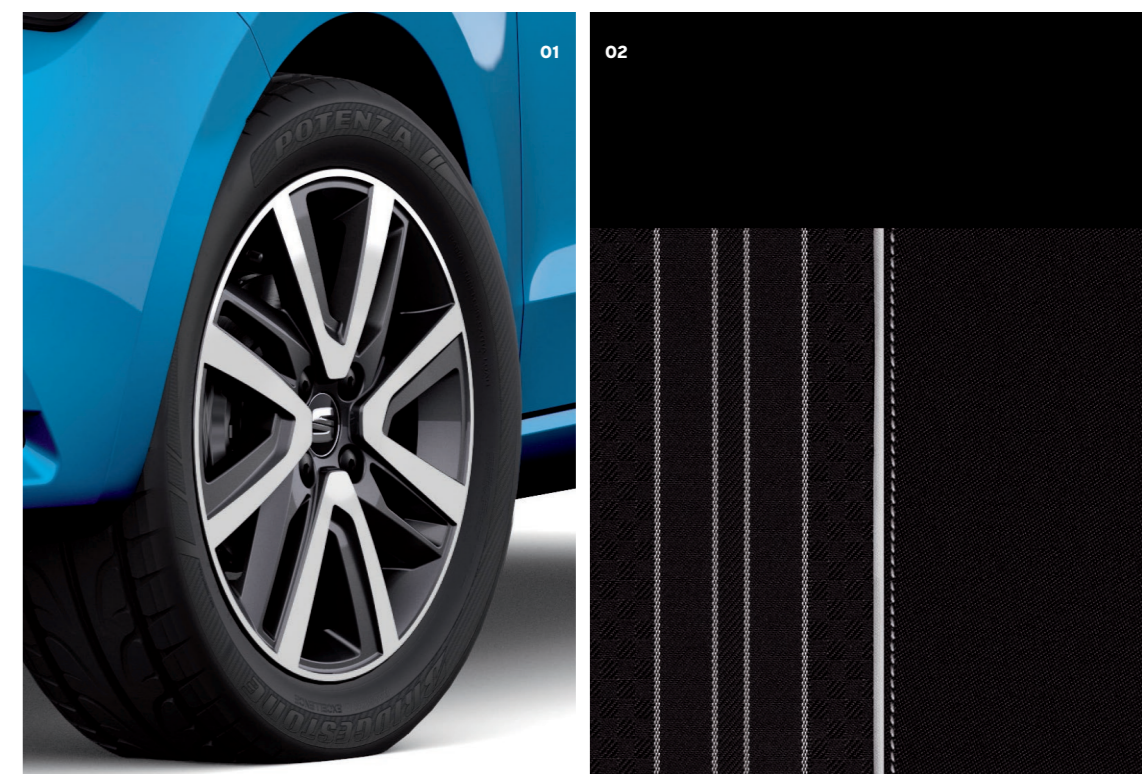
Top specifications

- 16" alloy wheels in 'Cosmo' Grey Matte
- Heated front sports seats
- Cruise control
- Fast charging (Combined AC/DC charging system)**
- SEAT CONNECT
- Lane assist & traffic sign recognition
- DAB
- Rear parking sensors

*The retail cash price includes upto £3,500 HMRC government grant for an electric plug in car.

**0-80% 1hr rapid charge at public charging station.

01. 16" alloy wheels.
02. Visual cloth.



Trim & specification

The new Mii electric.

	Output / PS	CO ₂ g/km	Insurance group [1-50]	BIK 2019/20	Basic price	VAT @ 20%	Retail price* (P11D value)	1st Year RFL Rate 2019/20	1st reg fee 2019/20	Recommended On The Road Price	Recommended on the road with the PICG deducted*
Mii electric	61kW / 83PS	0	12E	£0	£18,954.17	£3,790.83	£22,745.00	£0	£55	£22,800.00	£19,300.00

*This model is an all-electric vehicle (EV) which makes it eligible for the Government 'PICG' (Plug-in car grant) towards the cost of the car. The 'cost' is the full purchase price you pay for the basic vehicle - including number plates, Vehicle Excise Duty and VAT, but does not include delivery charge or the first registration fee. The amount of your grant will be deducted from the price of your vehicle when the vehicle is registered. The receipt of this grant is subject to the eligibility of the vehicle at the point of registration and is subject to change. Please refer to the GOV.UK OLEV grant website for more details. For more information please contact your local SEAT Dealer.

The Recommended 'On The Road' price includes delivery charge to Dealer and number plates, one year's Road Fund Licence at the 1st year rate (£0 - £2,135 depending on the CO₂ output of the vehicle), and the new vehicle registration fee (£55). VAT is calculated at 20.0%. SEAT may change RRP's at any time (this includes where there are government changes in regulation and/or legislation). There may be a delay to any RRP displaying correctly on our materials. Always obtain prices from your chosen SEAT Dealer. Figures shown are for comparability purposes; only compare electric consumption and CO₂ figures with other vehicles tested to the same technical procedures. These figures may not reflect real life driving results, which will depend on a number of factors including the accessories fitted (post-registration), variations in weather, driving styles and vehicle load. These figures were obtained after the battery was fully charged. There is a new test used for fuel consumption and CO₂ figures [known as WLTP]. Both the CO₂ figures shown however, are based on a calculation designed to be equivalent to the outgoing (NEDC) test cycle and will be used to calculate vehicle tax on first registration. For more information, please see www.seat.co.uk/wltp or consult your Dealer. Data correct at 10/2019.

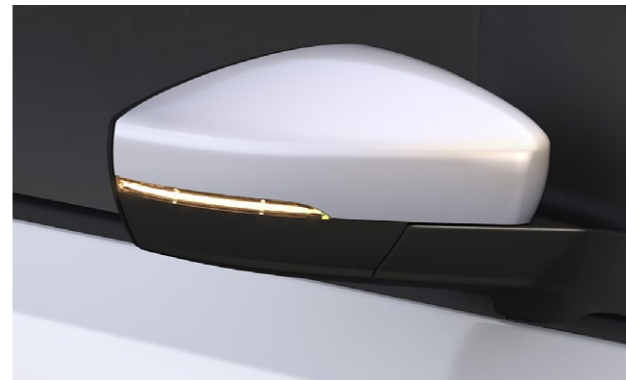
20 The new SEAT Mii electric. Model, pricing and specification list.



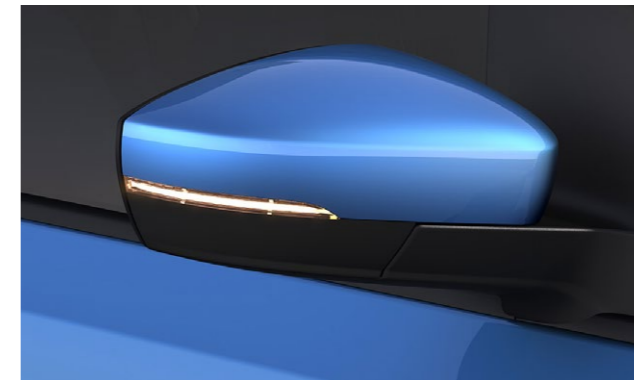


Model shown: Mii electric in Chester Blue, with Deep black contrast roof and door mirrors.

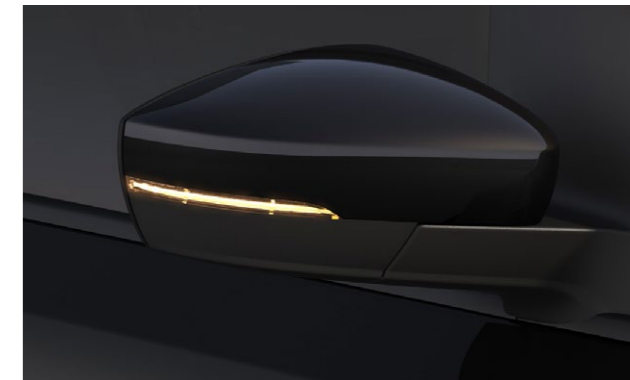
Pick your colour.



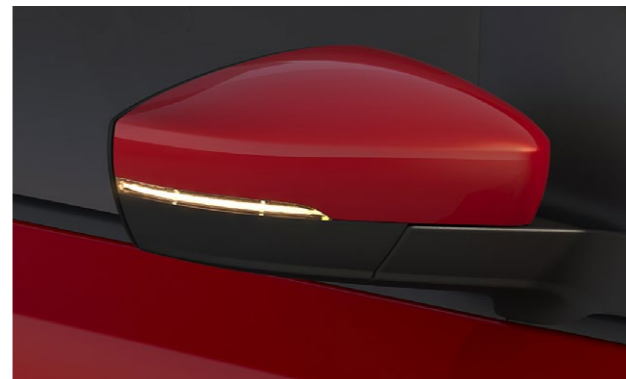
White¹



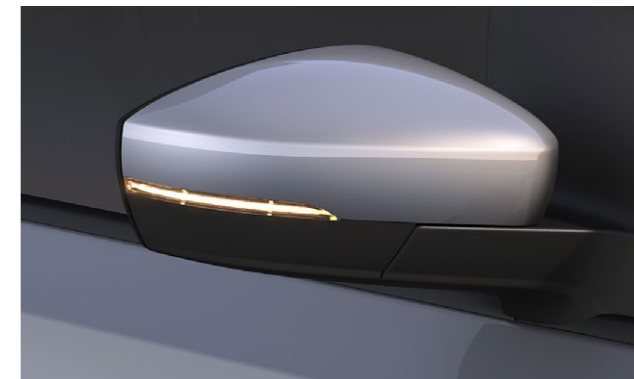
Chester Blue²



Deep Black²



Tornado Red¹



Tungsten Silver²

Contrast roof.

Only available in deep Black with matching door mirrors. Available with all colours except Deep Black.

¹Non-metallic ²Metallic

Print and screen view do not provide an exact representation of colour. Please refer to the paint colour moulds at your local SEAT Dealer.



Equipment.

■ Standard □ Optional

Mii electric

Wheels and tyres

- 16" "Cosmo" grey matt alloy wheels with 185/50 R16 81H tyres
- Emergency tyre repair kit

-
-

Charging and Battery

- Charging inlet combo 2 (CCS charging)
- Charging cable mode 3, type 2/3 (16amp)
- 36.8 KWH battery

-
-
-

Exterior equipment

- Body-coloured door mirrors, bumpers and door handles
- Contrast roof (Deep Black with matching door mirrors)
- Dark tinted rear windows
- Door mirrors (Heated and electrically adjustable, with integrated indicators)
- Exterior door graphics & rear lettering
- Halogen front headlights
- LED daytime running lights
- Metallic paint
- Rear fog light

-
-
-
-
-
-
-
-
-

Infotainment

- Bluetooth® phone connection
- Colour screen radio (5") – SD card slot, AM/FM radio
- DAB (digital audio broadcasting)
- Smartphone integration with Drive Mii app** – Universal smartphone cradle, TomTom® satellite navigation, Eco Trainer, Trip computer integration, In phone media and radio control, USB port and AUX-in port
- Six speakers
- SEAT connect app** (gen 1 – remote climatization, e-manager, departure times, parking position, driving data, vehicle stats, doors and lights) (10yr subscription)
- USB cable for Apple & Android compatibility

-
-
-
-
-
-
-

Equipment.

■ Standard

	Mii electric
Interior equipment	
Ambient lighting (white)	■
Driver and passenger sunvisor with mirror on passenger side	■
Front courtesy light	■
Seats and trim	
Black interior roof (Greenhouse)	■
Chrome detailing (door handles and dash inserts)	■
Door and side trim panel (body coloured)	■
Heated front sports seats with cloth upholstery and integrated headrests	■
Height-adjustable driver's seat	■
Leather steering wheel, gear knob & handbrake lever	■
New IML dashboard	■
Split folding rear seats (60/40)	■
Two height-adjustable rear headrests	■
Functional and mechanical	
Air conditioning	■
Cruise control	■
Electric front windows	■
Electro-mechanical power steering (speed-sensitive)	■
Heated front and rear windscreens	■
Height-adjustable sports steering wheel	■
Rain sensor wipers	■
Rear parking sensors	■
Comfort suspension	■
Instrument panel	
RPM counter, Digital clock, Low fuel warning light, 'Light on' reminder	■

26 The new SEAT Mii electric. Model, pricing and specification list.

Equipment.

■ Standard

	Mii electric
Safety and security	
Anti-lock brake system	■
Driver and front passenger airbags with front passenger de-activation, side airbag in front with curtain airbag	■
Electronic engine immobiliser	■
Electronic Stability Control (ESC)	■
Front and rear seatbelt reminder	■
Hill hold control	■
Lane assist	■
Locking wheel bolts	■
Remote central locking with safelock	■
Traffic sign recognition	■
Tyre pressure monitoring	■

Option prices.

	Basic price	VAT @ 20%	Recommended retail price
Charging			
Charging cable – Mode 2 cable (3 pin socket, 10amp)	£133.33	£26.67	£160.00
Seats and trim			
Easy flex – Double floor boot, hook in glovebox, height adjustable passenger seat	£41.67	£8.33	£50.00
Exterior Equipment			
Contrast roof in Deep Black with matching door mirrors	£0.00	£0.00	£0.00

27 The new SEAT Mii electric. Model, pricing and specification list.

Technical data.

Mii electric	
Engine	
Type (cylinders / valves per cylinder)	Permanent magnet synchronous electric motor
Maximum power (PS / kW / rpm) ¹	61(83), 2,750-11,000
Maximum torque (Nm / lb.ft / rpm)	212,-2,750
Fuel type	Electric
Performance	
Maximum speed (km/h)	130
Maximum speed (mph) ²	81
Acceleration 0-31mph (s)	3.9
Acceleration 0-62mph (s)	12.3
Fuel consumption³	
Electric consumption (kWh/100km) (WLTP)	14.4-14.9
Range (km) (WLTP)	Combined 250-259 / City 349-358
Range (miles)	161
Efficiency label	A+

Mii electric	
CO₂ emission	
CO ₂ (g/km)	0
Transmission	
Gearbox type	EQ210-1P
Chassis	
Front suspension	Independent type McPherson, coil springs, hydraulic dampers, Stabilizing bar Ø 18 mm
Rear suspension	Semirigid rear axle, coil springs, hydraulic dampers
Steering system	C-EPS (Column Electric Power Steering)
Turning circle diameter [wall to wall] (m)	9.8
Braking system	
Anti-lock Braking System (ABS)	ABS Standart, Option ESP
Type (front/rear)	Ventilated front brakes / Drum brakes in rear axle
Front discs (mm)	256x22
Rear discs (mm)	200x40

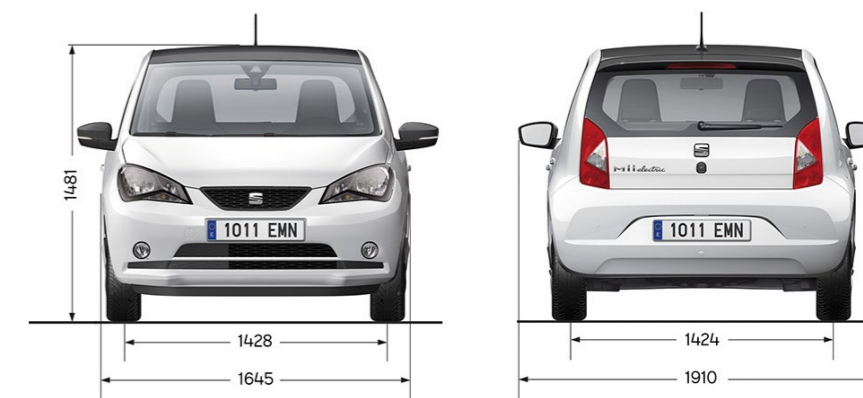
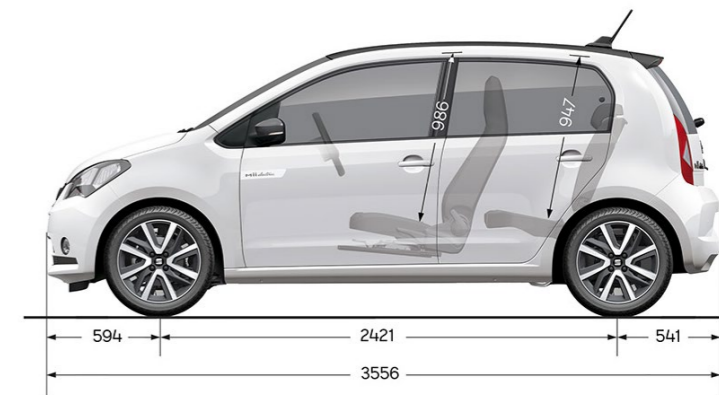
1. The maximum power output figures are quoted in PS (or Pferdestärke, which is the metric equivalent of horsepower). To convert from metric to imperial horsepower, divide the PS by 1.0139.

2. Where law permits.

3. Official electric consumption according to EU Directive 99/94. The consumption calculation according to 1999/100/EC is based on the actual unladen weight of the vehicle. Additional specifications can lead to a higher weight class and hence to consumption figures of this higher weight class. The driving style, road traffic conditions, environmental influences and vehicle condition can in practice lead to consumption figures which may differ from those calculated within this standard.

Technical data.

Mii electric 60KW	
Wheels	
Rims and tyres	6J X 16", 185/50 R16
Dimensions	
Max length / width / height (mm)	3557 / 1645 / 1478
Max wheelbase (mm)	2420
Max track front / rear (mm)	1428 / 1424
Boot capacity (l)	251
Weights	
Kerb weight [with driver] (kg)	1235
Max weight allowed (kg)	1530
Battery	
Battery type	Lithium-ion battery
HV-Battery (kWh)	36.8
Battery voltage (V)	307
Charging time AC 7,2 kW 80%	4:00
Charging time DC 40kW 80%	1:00





Vehicle excise duty.

All new vehicles are subject to a form of Vehicle Excise Duty (VED) based on the type of fuel the vehicle uses and its carbon dioxide (CO₂) emission level, measured in grammes per kilometre (g/km). To help you identify the duty you will pay, the DVLA has created thirteen bands.

12-month Road Fund Licence (RFL) rate for petrol and diesel cars: Effective from 1 April 2019 until 31 March 2020.

CO ₂ g/km	1st year rate	Standard rate
0	£0	£0
1	£10	£145
51	£25	£145
76	£110	£145
91	£130	£145
101	£150	£145
111	£170	£145
131	£210	£145
151	£530	£145
171	£855	£145
191	£1,280	£145
226	£1,815	£145
256	£2,135	£145

Please be aware vehicles with a list price (RRP), including options, higher than £40,000 will incur an additional £320 a year in vehicle tax, from the second time the vehicle is taxed. For full details please refer to gov.uk/vehicle-tax-rate-tables. The Autumn Budget 2017 announced that new diesel vehicles registered after 1 April 2018, that do not meet the RDE2 standard will be charged a supplement on their 1st year rate, to the effect of moving up by one VED band. Currently all SEAT diesel engines are affected by this supplement.

Benefit in Kind.

For electric cars, the Government has announced it will cut BiK rates for zero-emissions vehicles down to 0% during the 2020-21 financial year, rising to just 1% in 2021-22 and 2% in 2022-23.

Mii electric

Year	CO ₂ g/km	RRP	VED rate	VED amount
2020/21	0	£22,800	-	-
2021/22	0	£22,800	1%	£3.80
2022/23	0	£22,800	2%	£7.60

Warranties & service plans.

Optional

Extended Warranties	All trims	Basic price	VAT @ 20%	Recommended retail price	
When you buy a new SEAT it is covered by a 3 year/60,000 miles manufacturer warranty. You can extend this cover, with a 4 year/75,000 miles or 5 year/90,000 miles SEAT Extended Manufacturer Warranty, and get the same level of cover. It is fully transferable to a new owner if you decided to sell your SEAT.	4 years/75,000 miles	<input type="checkbox"/>	£115.00	£23.00	£138.00
Please note: The SEAT Extended Manufacturer Warranty is only available at the time of ordering a new SEAT.	5 years/90,000 miles	<input type="checkbox"/>	£212.50	£42.50	£255.00

Extended Warranty for existing owners: If your existing warranty is about to expire, or if you haven't already got one in place, our Extended Warranty* is designed to protect you. For a quote, visit insurewithseat.co.uk

*SEAT Financial Services is a trading name of Volkswagen Financial Services (UK) Limited. SEAT Extended Warranty is sold and administered by Lawshield UK and underwritten by Volkswagen Versicherung AG. Terms, conditions, and eligibility criteria apply.

Service plan	All trims	Upfront payment	or	Monthly cost
New Fixed Price Service Plans are available for cars up to 12 months. You always know where you are with our fixed price plans which are inflation proof. Available at participating SEAT Dealers.				
Go to seat.co.uk/bookservice	Includes 1st and 2nd service	<input type="checkbox"/>	£393.22	24 monthly payments of £16.38

Prices are subject to change.

The SEAT Warranty

Three-year Warranty.

All new SEATs registered in the UK come with a three year/60,000 miles warranty, which protects your car against the failure of most mechanical and electrical components due to manufacturing defects. This comprises a two-year manufacturer's warranty with unlimited mileage plus a further one-year/60,000 (whichever is soonest).

Dealer Warranty.

Should the mileage exceed 60,000 miles within the first two years, the manufacturer's two-year warranty will still be valid. If an additional warranty for subsequent years or higher mileage is desired, it may be purchased from an authorised SEAT Dealer or repairer, however, this additional warranty must be purchased before the mileage reaches 60,000. Cover is subject to the car being serviced and maintained according to the manufacturer's technical guidelines. Full details of the three-year warranty are available from your SEAT Dealer or repairer.

Warranties & service plans.

SEAT Extended Manufacturer Warranty

If you take out a SEAT Extended Manufacturer Warranty before your new car is registered, you'll get exactly the same level of cover as the three year warranty, but for up to five years. You can choose a SEAT Extended Manufacturer Warranty to last until the end of the 4th year/up to 75,000 miles or until the end of the 5th year/up to 90,000 miles (whichever is soonest). Please note: SEAT Extended Manufacturer Warranty products are only available at the time of ordering your new SEAT.

Battery warranty

SEAT guarantees 8 years of battery lifetime and / or 100,000 ml driving distance. Therefore the battery capacity will not fall below 70%.

Three-year Paint Warranty

The paintwork of all models featured in this price list is covered against manufacturing defects for a period of three years. Naturally, the vehicle must be cared for in compliance with the operating instructions which will be found in your vehicle handbook. Please consult your authorised SEAT Dealer or repairer for full warranty details.

Twelve-year Body Protection Warranty

The internal body sections and panels of the models featured in this price list are covered against rusting through from the outside for twelve years.

Naturally, the vehicle must be cared for in compliance with the operating instructions which will be found in your vehicle handbook. Please consult your authorised SEAT Dealer or repairer for full warranty details.

SEAT Parts Warranty

SEAT parts and accessories supplied after new vehicle delivery are covered by our 24 months parts warranty.

SEAT Car Insurance

Complimentary drive away cover

We want you to start enjoying your car from day one, and with our 5 day Drive Away Insurance you can. Our comprehensive cover is designed specifically for SEAT drivers, and offers many features and benefits as standard. To activate, simply call 0345 246 3519. If you are eligible, we will also provide you with an annual quotation giving you the option to purchase 12 months cover. Subject to eligibility. Five day drive away insurance cannot be used in conjunction with any other insurance offer.

Annual Car Insurance

If you take out a new SEAT Car Insurance* policy, you will receive the following benefits as standard:

- SEAT Approved Repairs carried out by SEAT Approved technicians using only Genuine Parts and Paints

- Guaranteed courtesy car
- Windscreen cover
- Uninsured driver promise
- 24hr accident recovery
- Personal accident cover
- Personal belongings cover
- Child seat replacement

For more information or to get a quote, please visit insurewithseat.co.uk or alternatively call us on 0345 877 6555. We're available Monday to Friday 8am-8pm and Saturday 9am-5pm.

SEAT Roadside Assistance (including European cover)

Any new SEAT purchased and registered in the UK from an authorised SEAT Dealer, is covered free by SEAT Assistance (including European cover) for roadside repairs or recovery to an authorised repairer for a term of two years. Terms and conditions apply.

Specifications

Specifications refer to Model Year 2020. While SEAT makes every effort to make sure that specifications are accurate at time of going to press (10/2019), you should always check details with your SEAT Dealer as there may have been changes in view of SEAT's policy of continuous product improvement. The right is reserved to change specification and colour at any time. The information in this price list can therefore be given as guidance only.

*SEAT Car Insurance is underwritten by U K Insurance Limited. Registered Office: The Wharf, Neville Street, Leeds LS1 4AZ. Registered in England and Wales No. 1179980. U K Insurance Limited is authorised by the Prudential Regulation Authority and regulated by the Financial Conduct Authority and the Prudential Regulation Authority. Calls may be recorded. SEAT Financial Services is a trading name of Volkswagen Financial Services (UK) Limited ("VWFS UK"), registered in England and Wales No.2835230 (registered office: Brunswick Court, Yeomans Drive, Blakelands, Milton Keynes MK14 5LR). Volkswagen Insurance Service (Great Britain) Ltd is an appointed representative of VWFS UK. VWFS UK is authorised and regulated by the Financial Conduct Authority, registration number 311988. Authorisation details for both organisations can be checked on the Financial Services Register by visiting fca.org.uk. VWFS UK and U K Insurance Limited are not part of the same corporate group.

32 The new SEAT Mii electric. Model, pricing and specification list.

32 The new SEAT Mii electric. Model, pricing and specification list.



SEAT is committed to a policy of continuous product development and reserves the right to make changes to specifications, colours and prices without notice. The information in this brochure can therefore be given as guidance only. While SEAT makes every effort to ensure that specifications are accurate at the time of publication, you should always check with your authorised SEAT Partner for the latest information. Due to limitations of the printing process the colours reproduced in this brochure may vary slightly from the actual paint colour and material. This vehicle and all its parts, as well as the original spares, were designed according to the Legal Regulations governing the prevention and minimisation of Environmental Impact, through the use of recycled/recyclable materials, with measures taken to achieve suitable recycling for the conservation and improvement of environmental quality.

10/2019 Printed in the UK.

seat.co.uk