



ŠkodaFabia



Colour and upholstery

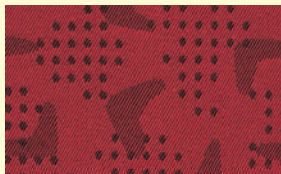
There's a choice of 13 elegant colours to choose from, all of which have been produced in one of Europe's most modern paintwork plants, where the emphasis is not only on a perfect finish, but also on a clean environment. The purpose of our paintwork is, of course, first

and foremost to ensure you enjoy your Fabia for many years to come. But, as in all stages of production, we also seek to reduce the use of harmful substances. For instance, we only use water-soluble paints, and we do not use chromic salts when painting. Furthermore, all

our colour pigments are free from heavy metals. That means the paint not only protects against the environment around you, it damages it as little as possible too.



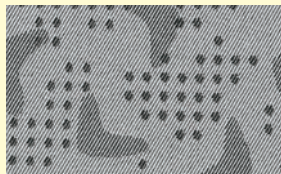
Classic and Saloon upholstery: Flamenco.



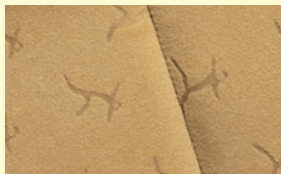
Comfort upholstery: Starship Red.



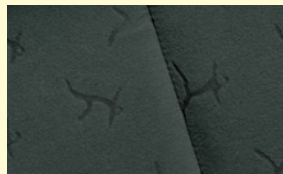
Comfort upholstery: Starship Blue.



Comfort upholstery: Starship Silver.



Elegance upholstery: Mystic Beige. (Not available on vehicles ordered after week 32)



Elegance upholstery: Mystic Black.



vRS upholstery: vRS upholstery: Onyx and Grey sports cloth.

All interiors (relevant to trim level) are available with all exterior colours.



Candy White 9P9P (Not vRS)



Nature Green Metallic 3Y3Y (Not vRS)



Laser Blue W2W2 (Not vRS)



Dynamic Blue 6D6D (Not vRS)



Lemon Yellow 8Q8Q (Not Saloon)



Stone Grey Metallic F7F7 (Not vRS)



Diamond Silver Metallic 1B1B



Dark Blue Metallic D7D7 (Not vRS)



Cayenne Metallic 7Q7Q (Not vRS)



Black Magic 1Z1Z



Corrida Red 8T8T



Admiral Blue Metallic X9X9 (Not vRS)
(not available to order from build week 46)

Because of errors which may occur in the print, the colours illustrated here may differ from the exact finishes themselves. Your Skoda Retailer will be pleased to advise you.

Exterior equipment

	Hatch & Estate				
	Saloon	Classic	Comfort	Elegance	vRS
ABS	●	●	●	-	-
ABS + ASR + MSR	-	-	-	-	●
ABS + EDL + ASR	○ ¹	○ ²	○ ³	●	●
Alarm	-	-	-	●	●
14" Alloy wheels (full size steel spare)	-	-	-	-	-
15" Alloy wheels (full size steel spare) ⁴	-	-	-	○	-
16" Alloy wheels (full size steel spare)	-	-	-	-	●
Automatic transmission, four speed ⁵	●	●	●	-	-
Body coloured bumpers	●	●	●	●	●
Body coloured door mirrors	-	-	●	●	●
Bodyside protective moulding	-	-	●	●	●
Child safety locks on rear doors	●	●	●	●	●
Electric release petrol cover flap	-	-	●	●	●
Electrically adjustable and heated door mirrors	-	-	●	●	●
Electrically operated front windows, with one touch operation	●	○ (Plus Pack)	●	●	●
Electrically operated sunroof	○	○	○	○	○
Five speed manual transmission	●	●	●	-	-
Six speed manual transmission	-	-	-	-	●
Front fog lights	-	-	-	-	●
High level third brake light	●	●	●	●	●
Integrated front spoiler	●	●	●	-	-
Internally adjustable door mirrors	●	●	-	-	-
Internally adjustable headlight beam level	●	●	●	●	●
Metallic paint	○	○	○	○	○
Parking sensors	-	-	□	□	-
Power steering	●	●	●	●	●
Rear fog light	●	●	●	●	●
Rear mounted roof aerial	●	●	●	●	●
Rear wash/wipe facility	-	●	●	●	●
Roof rails	-	-	-	■	-
Tinted glass	-	-	●	●	●
Twin reversing lights	●	●	●	●	●
Two speed windscreen wipers	●	●	●	●	●
Visible VIN	●	●	●	●	●

For further information on accessories please contact an authorised Skoda retailer who will be happy to assist you.

¹ ABS + EDL + ASR standard on 1.4 16V 100bhp. Optional on 1.4 16V 75bhp auto. Not available on 1.9 SDI.

² ABS + EDL + ASR Optional on 1.4 16V 75bhp auto. Not available on 1.9 SDI.

³ ABS + EDL + ASR Standard on 1.4 16V 100bhp and 1.9 TDI 100bhp. Optional on 1.4 16V 75bhp auto. Not available on 1.9 SDI.

⁴ 15" Alloy wheels (full size steel spare) standard on 2.0 115bhp

⁵ Automatic transmission, four speed available on 1.4 16V 75bhp only

⁶ Standard on 1.2 54bhp and 1.4 68bhp

⁷ Standard on vehicles built from 5th May 2003 excluding 1.2 54 bhp and 1.4 68 bhp.

⁸ Standard on vehicles built from 5th May 2003 excluding 1.4 68 bhp.

Interior equipment

	Hatch & Estate				
	Saloon	Classic	Comfort	Elegance	vRS
Adjustable dashboard illumination	-	-	●	●	●
Air re-circulation, pollen filter	●	●	●	●	●
Air conditioning, incl. cooled glovebox & drinks compartment	○	○	○	●	●
Boot storage net	-	-	-	■	-
Central locking, with remote control	●	○ (Plus Pack)	●	●	●
Chrome Pack (Chrome gear knob, door locks)	-	-	-	●	-
Cup holders	●	●	●	●	●
Deadlocks	-	-	●	●	●
Delayed courtesy light	-	-	●	●	●
Digital clock	●	●	●	●	●
Driver and front passenger airbag	●	●	●	●	●
Folding rear seat with 60/40 asymmetric split	-	●	●	●	●
Front reading light	-	-	-	●	●
Glovebox	●	●	●	●	●
Heated front seats	-	-	-	●	-
Height adjustable drivers seat	●	●	●	●	●
Height adjustable front and rear head restraints	●	●	●	●	●
Height adjustable front seat belts	●	●	●	●	●
Height and reach adjustable steering wheel	●	●	●	●	●
Immobiliser (Hatcham Category 2)	●	●	●	●	●
Lashing eyelets in boot	●	●	●	●	●
Lights on warning buzzer	●	●	●	●	●
Parcel shelf	●	●	●	●	●
Rear ashtray	-	-	-	●	-
Rev counter	●	●	●	●	●
Seat mounted storage pockets	-	-	●	●	●
Side airbags	○	○	○	○	○
Side impact protection	●	●	●	●	●
Skoda "202" stereo RDS radio/cassette player & 4 speakers (front)	-	● ⁶	-	-	-
Symphony radio/single CD player & 4 speakers (front)	●	● ⁷	-	-	-
Symphony radio/single CD player & 8 speakers (front & rear)	-	-	●	●	●
Trip computer	-	-	●	●	●
Upholstery "Flamenco"	●	●	-	-	-
Upholstery "Starship"	-	-	●	-	-
Upholstery "Mystic"	-	-	-	●	-
Upholstery "vRS"	-	-	-	-	●

Specification guide:

● Equipment fitted as standard on vehicle.

□ Equipment available at extra cost.

○ Equipment available at extra cost.

▼ Equipment fitted as standard on Hatch models only.

▽ Equipment available at extra cost on Hatch models only.

■ Equipment fitted as standard on Estate models only.

□ Equipment available at extra cost on Estate models only.

- Not available.

(A) with 4 speed automatic gearbox.

Measurements Figures are for vehicle carrying average load and three passengers. *Figures for unloaded vehicle.
Wheel track depends on wheel size.

Škoda Fabia Hatch

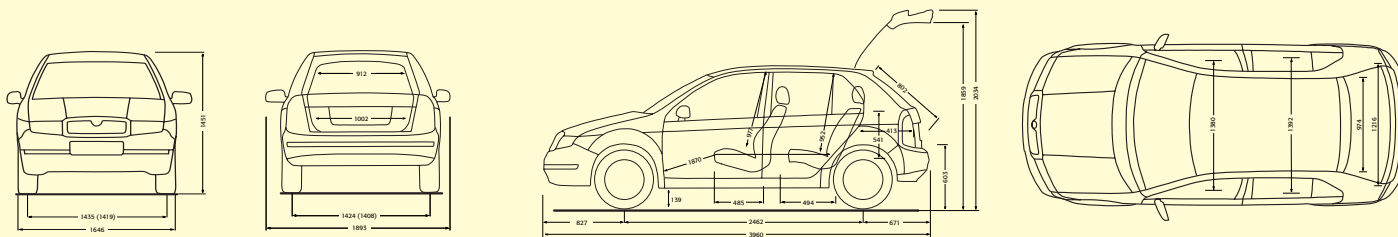
Interior dimensions:

Legroom – front max./min. (mm) 1,100/860

Legroom – rear max./min. (mm) 846/606

Luggage storage space – with rear seat upright (L) 260

Luggage storage space – with rear seat down (L) 1,016



Škoda Fabia Estate

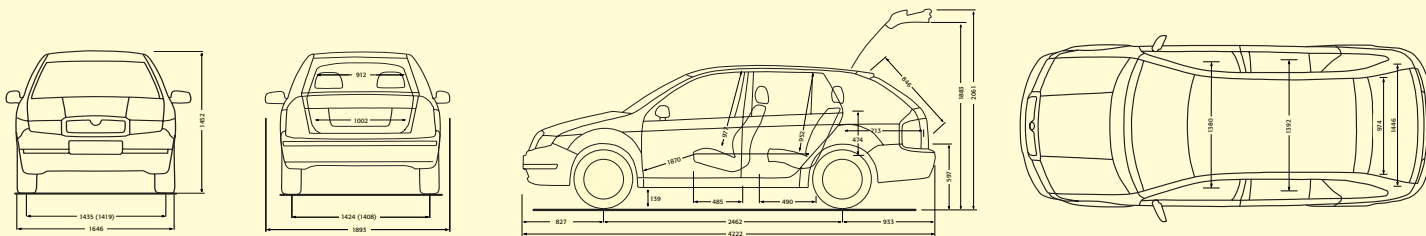
Interior dimensions:

Legroom – front max./min. (mm) 1,100/860

Legroom – rear max./min. (mm) 846/606

Luggage storage space – with rear seat upright (L) 426

Luggage storage space – with rear seat down (L) 1,225



Škoda Fabia Saloon

Interior dimensions:

Legroom – front max./min. (mm) 1,100/860

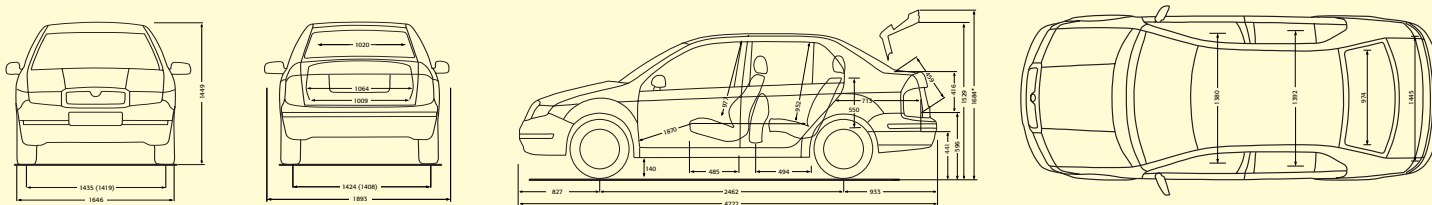
Legroom – rear max./min. (mm) 846/606

Luggage storage space – with rear seat upright (L) 438

Luggage storage space – with rear seat down (L) 789

Effective headroom front/rear (mm) 977/952

Lateral front/rear (mm) 1,380/1,392



Škoda Fabia Hatch

Engine	1.2 MPI 54bhp	1.2 12v 64bhp	1.4 16v 75bhp (A)
	3-cylinder in-line engine, spark ignition, water-cooled, OHC, two valves per cylinder, transverse-mounted. Electronic, contact-free, microprocessor-controlled, multi-point fuel injection.	3-cylinder in-line engine, spark ignition, water-cooled, dual OHC, four valves per cylinder, transverse-mounted. Electronic, contact-free, microprocessor-controlled, multi-point fuel injection.	4-cylinder in-line engine, spark ignition, water-cooled, dual OHC, four valves per cylinder, transverse-mounted. Electronic, contact-free, microprocessor-controlled, multi-point fuel injection.
Version	Classic	Classic/Comfort	Classic/Comfort/Elegance
Cubic capacity cc	1198	1198	1390
Bore x stroke mm	76.5 x 86.9	76.5 x 86.9	76.5 x 75.6
Air pollution regulation	EUIV	EUIV	EUIV
Compression ratio	10.3:1	10.5:1	10.5:1
Battery	12V/44Ah	12V/44Ah	12V/44Ah
Alternator	70Ah	70Ah	70Ah
Weight			
Kerb weight* lbs (kg)	2,403 (1,090)	2,535 (1,150)	2,612 (1,185)
Total weight lbs (kg)	3,340 (1,515)	3,472 (1,575)	3,550 (1,610)
Payload* lbs (kg)	937 (425)	937 (425)	937 (425)
Max roof load lbs (kg)	165 (75)	165 (75)	165 (75)
Towing unbraked max lbs (kg)	992 (450)	992 (450)	992 (450)
Towing braked max lbs (kg)	1,764 (800)	1,764 (800)	1,764 (800)
Nose weight max lbs (kg)	110 (50)	110 (50)	110 (50)
Performance			
Max speed mph (km/h)	94 (151)	99 (160)	103 (166)
Acceleration 0-62mph	18.4	15.9	17.0
Max. performance (Bhp/rpm)	54/4,750	64/5,400	75/5,000
Max. torque (Nm/rpm)	106/3,000	112/3,000	126/3,800
Fuel consumption mpg (l/100km)			
Urban**	35.8 (7.9)	36.7 (7.7)	27.4 (10.3)
Extra Urban**	58.9 (4.8)	55.4 (5.1)	47.9 (5.9)
Combined**	47.1 (6.0)	47.1 (6.0)	37.7 (7.5)
CO ₂ emissions g/km**	144	144	180
Insurance Group	1E	2E/3E	3E

* Weight depending on equipment level ** Fuel consumption depending on equipment level according to EU Directive 93/116

Power transmission	
Clutch	Hydraulically-activated single-plate dry clutch with diaphragm spring, asbestos-free coating.
Manual transmission	Five-speed manual transmission, fully synchronised with direct gearshift.
Automatic transmission	Four-speed with fuzzy logic system (only with 1.4/75bhp).
Bodywork	
Body type	Five-door, five-seat, double-space steel bodywork, fully zinc-coated.
Wind resistance factor c_w	0.32
Tank	
Fuel tank content (L)	45
Fuel	Unleaded petrol RON 95 or unleaded petrol RON 91*. Unleaded petrol RON 98 or unleaded petrol RON 95** (1.4/100bhp, 2.0/115bhp). Diesel (1.9 SDI/64bhp, 1.4 TDI PD/75bhp, 1.9 TDI PD/100bhp, vRS 1.9 TDI PD/130bhp).

* Lower efficiency when using RON 91 petrol.

** Lower efficiency when using RON 95 petrol.

	1.4 16v 100bhp	2.0 115bhp	1.9 SDI 64bhp
	4-cylinder in-line engine, spark ignition, water-cooled, dual OHC, four valves per cylinder, transverse-mounted. Electronic, contact-free, microprocessor-controlled, multi-point fuel injection.	4-cylinder in-line engine, spark ignition, water-cooled, OHC, two valves per cylinder, transverse-mounted. Electronic, contact-free, microprocessor-controlled, multi-point fuel injection.	4-cylinder in-line diesel engine, water-cooled, OHC, transverse-mounted, electronic direct injection.
	Comfort/Elegance	Elegance	Classic/Comfort
	1,390	1,984	1,896
	76.5 x 75.6	82.5 x 92.8	79.5 x 92.5
	EUIV	EUIV	EUIII
	10.5:1	10.5:1	19.5:1
	12V/44Ah	12V/44Ah	12V/70Ah
	70Ah	70Ah	120Ah
	2,546 (1,155)	2,646 (1,200)	2,679 (1,215)
	3,483 (1,580)	3,583 (1,625)	3,616 (1,640)
	937 (425)	937 (425)	937 (425)
	165 (75)	165 (75)	165 (75)
	992 (450)	1,102 (500)	992 (450)
	1,874 (850)	2,205 (1,000)	1,764 (800)
	110 (50)	110 (50)	110 (50)
	115 (185)	121 (195)	96 (154)
	11.5	9.9	18.6
	100/6,000	115/5,400	64/4,000
	126/4,400	170/2,400	125/1,600-2,800
	31.4 (9.0)	25.9 (10.9)	44.8 (6.3)
	52.3 (5.4)	47.9 (5.9)	68.9 (4.1)
	42.2 (6.7)	36.7 (7.7)	57.6 (4.9)
	161	185	132
	6A	8A	2E/3A

Chassis	
Front axle/rear axle	McPherson strut with the lower control arms and transverse torsion stabiliser/crank axle with trailing arms.
Suspension	Coil springs, telescopic shock absorbers, rear springs located outside the shock absorbers.
Braking system	Hydraulic dual-circuit brakes in diagonal configuration, with a vacuum booster with rear brake force limiter, dual master cylinder (for 1.4/100bhp and 2.0/115bhp standard with ABS + EDL + ASR).
Front brakes	Ventilated disc brakes in sliding calliper design with piston.
Rear brakes	Drum brakes with two self-adjusting brake shoes, or disc brakes (depending on engine type).
Handbrake	Mechanical handbrake operating on rear wheels.
Steering	Maintenance-free rack-and-pinion steering with power assist.
Turning circle (m)	10.48
Wheels/tyres	Steel rim 51 x 14"/165/70 R14 (Classic version). Steel rim 61 x 14"/185/60 R14 (Comfort version). Light alloy rim 61 x 14"/185/60 R14 (Elegance version). Light alloy rim 61 x 15"/195/50 R15 (Elegance version with 2.0/115bhp engine). Light alloy rim 6.5J x 16"/205/45 R16 (vRS version).

Škoda Fabia Hatch continued

Engine	1.4 TDI PD 75bhp	1.9 TDI PD 100bhp	1.9 TDI PD 130bhp
	Turbo-charged diesel engine, turbocharged with self-aligning VTG blades, in-line, liquid cooling system, high-pressure direct injection system - pump nozzle, OHC, transverse in front.	4-cylinder in-line diesel engine, water-cooled, OHC, intercooler, transverse-mounted, turbocharger with variable blades, high pressure injection, electronic direct injection.	Four cylinder, turbo-charged diesel engine, turbocharger with self aligning VTG blades, in-line, liquid cooling system, high pressure direct injection system - pump nozzle, OHC, transverse in front.
Version	Classic/Comfort	Comfort/Elegance	vRS
Cubic capacity cc	1,422	1,896	1,896
Bore x stroke mm	79.5 x 95.5	79.5 x 95.5	79.5 x 95.5
Air pollution regulation	EUIII	EUIII	EUIII
Compression ratio	19.5:1	19.0:1	19.0:1
Battery	12V/70Ah	12V/70Ah	12V/70Ah
Alternator	120Ah	120Ah	120Ah
Weight			
Kerb weight* lbs (kg)	2,690 (1,220)	2,723 (1,235)	2,899 (1,315)
Total weight lbs (kg)	3,627 (1,645)	3,660 (1,660)	3,792 (1,720)
Payload* lbs (kg)	937 (425)	937 (425)	893 (405)
Max roof load lbs (kg)	165 (75)	165 (75)	165 (75)
Towing unbraked max lbs (kg)	992 (450)	992 (450)	N/A
Towing braked max lbs (kg)	2,205 (1,000)	2,205 (1,000)	N/A
Nose weight max lbs (kg)	110 (50)	110 (50)	N/A
Performance			
Max speed mph (km/h)	104 (168)	115 (185)	127 (204)
Acceleration 0-62mph	14.2	11.5	9.6
Max. performance (Bhp/rpm)	75/4,000	100/4,000	130/4,000
Max. torque (Nm/rpm)	195/2,200	240/1,800-2,400	310/1,900
Fuel consumption mpg (l/100km)			
Urban**	49.6 (5.7)	43.5 (6.5)	42.2 (6.7)
Extra Urban**	68.9 (4.1)	68.9 (4.1)	67.3 (4.2)
Combined**	61.4 (4.6)	56.5 (5.0)	55.4 (5.1)
CO ₂ emissions g/km**	124	135	138
Insurance Group	3E/4E	6A	9A

* Weight depending on equipment level ** Fuel consumption depending on equipment level according to EU Directive 93/116

Škoda Fabia Estate

Engine	1.2 12v 64bhp	1.4 16v 75bhp (A)	1.4 16v 100bhp
	3-cylinder in-line engine, spark ignition, water-cooled, dual OHC, four valves per cylinder, transverse-mounted. Electronic, contact-free, microprocessor-controlled, multi-point fuel injection.	4-cylinder in-line engine, spark ignition, water-cooled, dual OHC, four valves per cylinder, transverse-mounted. Electronic, contact-free, microprocessor-controlled, multi-point fuel injection.	4-cylinder in-line engine, spark ignition, water-cooled, dual OHC, four valves per cylinder, transverse-mounted. Electronic, contact-free, microprocessor-controlled, multi-point fuel injection.
Version	Classic/Comfort	Classic/Comfort/Elegance	Comfort/Elegance
Cubic capacity cc	1,198	1,390	1,390
Bore x stroke mm	76.5 x 86.9	76.5 x 75.6	76.5 x 75.6
Air pollution regulation	EUIV	EUIV	EUIV
Compression ratio	10.5:1	10.5:1	10.5:1
Battery	12V/44Ah	12V/44Ah	12V/44Ah
Alternator	70Ah	70Ah	70Ah
Weight			
Kerb weight* lbs (kg)	3,201 (1,185)	2,689 (1,220)	2,623 (1,190)
Total weight lbs (kg)	3,549 (1,610)	3,626 (1,645)	3,560 (1,615)
Payload* lbs (kg)	937 (425)	937 (425)	937 (425)
Max roof load lbs (kg)	165 (75)	165 (75)	165 (75)
Towing unbraked max lbs (kg)	992 (450)	992 (450)	992 (450)
Towing braked max lbs (kg)	1,653 (750)	1,763 (800)	1,873 (850)
Nose weight max lbs (kg)	110 (50)	110 (50)	110 (50)
Performance			
Max speed mph (km/h)	101 (162)	105 (169)	115 (186)
Acceleration 0-62mph	16.3	17.3	11.6
Max. performance (Bhp/rpm)	64/5,400	75/5,000	100/6,000
Max. torque (Nm/rpm)	112/3,000	126/3,800	126/4,400
Fuel consumption mpg (l/100km)			
Urban**	36.7 (7.7)	27.2 (10.4)	31.4 (9.0)
Extra Urban**	55.4 (5.1)	47.1 (6.0)	52.3 (5.4)
Combined**	47.1 (6.0)	37.2 (7.6)	42.2 (7.7)
CO ₂ emissions g/km**	144	182	161
Insurance Group	2E	3A/4E/6E	6E

* Weight depending on equipment level ** Fuel consumption depending on equipment level according to EU Directive 93/116

Power transmission	
Clutch	Hydraulically-activated single-plate dry clutch with diaphragm spring, asbestos-free coating.
Manual transmission	Five-speed manual transmission, fully synchronised with direct gearshift.
Automatic transmission	Four-speed with fuzzy logic system (only with 1.4/75bhp).
Bodywork	
Body type	Five-door, five-seat, double-space steel bodywork, fully zinc-coated.
Wind resistance factor c _w	0.29
Tank	
Fuel tank content (L)	45
Fuel	Unleaded petrol RON 95 or unleaded petrol RON 91*. Unleaded petrol RON 98 or unleaded petrol RON 95** (1.4/100bhp, 2.0/115bhp). Diesel (1.9 SDI/64bhp, 1.4 TDI PD/75bhp, 1.9 TDI PD/100bhp).

* Lower efficiency when using RON 91 petrol.

** Lower efficiency when using RON 95 petrol.

Škoda Fabia Estate continued

Engine	2.0 115bhp	1.9 SDI 64bhp	1.4 TDI PD 75bhp	1.9 TDI PD 100bhp
	4-cylinder in-line engine, spark ignition, water-cooled, OHC, two valves per cylinder, transverse-mounted. Electronic, contact-free, microprocessor-controlled, multi-point fuel injection.	4-cylinder in-line diesel engine, water-cooled, OHC, transverse-mounted, electronic direct injection.	Turbo-charged diesel engine, turbocharger with self-aligning VTG blades, in-line, liquid cooling system, high-pressure direct injection system - pump nozzle, OHC, transverse in front.	4-cylinder in-line diesel engine, intercooler, water-cooled, OHC, transverse-mounted, turbocharger with variable blades, high pressure injection, electronic direct injection.
Version	Elegance	Classic/Comfort	Classic/Comfort	Comfort/Elegance
Cubic capacity cc	1,984	1,896	1,422	1,896
Bore x stroke mm	82.5 x 92.8	79.5 x 95.5	79.5 x 95.5	79.5 x 95.5
Air pollution regulation	EUIV	EUIII	EUIII	EUIV
Compression ratio	10.5:1	19.5:1	19.0:1	19.0:1
Battery	12V/44Ah	12V/70Ah	12V/70Ah	12V/44Ah
Alternator	70Ah	120Ah	120Ah	120Ah
Weight				
Kerb weight* lbs (kg)	2,722 (1,235)	2,755 (1,250)	2,767 (1,255)	2,799 (1,270)
Total weight lbs (kg)	3,659 (1,660)	3,692 (1,675)	3,704 (1,680)	3,736 (1,695)
Payload* lbs (kg)	937 (425)	937 (425)	937 (425)	937 (425)
Max roof load lbs (kg)	165 (75)	165 (75)	165 (75)	165 (75)
Towing unbraked max lbs (kg)	1,102 (500)	992 (450)	992 (450)	992 (450)
Towing braked max lbs (kg)	2,204 (1,000)	1,763 (800)	2,205 (1,000)	2,204 (1,000)
Nose weight max lbs (kg)	110 (50)	110 (50)	110 (50)	110 (50)
Performance				
Max speed mph (km/h)	122 (197)	98 (158)	106 (170)	116 (187)
Acceleration 0-62mph	10.1	19.0	14.4	11.6
Max. performance (Bhp/rpm)	115/5,400	64/4,000	75/4,000	100/4,000
Max. torque (Nm/rpm)	170/2,400	125/1,600-2,800	195/2,200	240/1,800-2,400
Fuel consumption mpg (l/100km)				
Urban**	25.7 (11.0)	44.1 (6.4)	49.6 (5.7)	43.5 (6.5)
Extra Urban**	47.1 (6.0)	68.9 (4.1)	68.9 (4.1)	68.9 (4.1)
Combined**	36.2 (7.8)	57.6 (4.9)	61.4 (4.6)	56.5 (5.0)
CO ₂ emissions g/km**	187	132	124	135
Insurance Group	8E	2E/3E	3E/4E	6E

Chassis

Front axle/rear axle	McPherson strut with lower control arms and transverse torsion stabiliser/crank axle with trailing arms.
Suspension	Coil springs, telescopic shock absorbers, rear springs located outside the shock absorber.
Braking system	Hydraulic dual-circuit brakes in diagonal configuration, with a vacuum booster with rear brake force limiter, dual master cylinder (for 1.4/100bhp and 2.0/115bhp standard with ABS + EDL + ASR).
Front brakes	Ventilated disc brakes in sliding calliper design with piston.
Rear brakes	Drum brakes with two self-adjusting brake shoes, or disc brakes (depending on engine type).
Handbrake	Mechanical handbrake operating on rear wheels.
Steering	Maintenance-free rack-and-pinion steering with power assist.
Turning circle (m)	10.48
Wheels/tyres	Steel rim 5J x 14"/165/70 R14 (Classic version). Steel rim 6J x 14"/185/60 R14 (Comfort version). Light alloy rim 6J x 14"/185/60 R14 (Elegance version). Light alloy rim 6J x 15"/195/50 R15 (Elegance version with 2.0/115bhp engine).

Škoda Fabia Saloon

Engine	1.9 SDI 64bhp	1.4 16v 75bhp (A)	1.4 16v 100bhp
	4-cylinder in-line diesel engine, water-cooled, OHC, transverse-mounted, electronic direct injection.	4-cylinder in-line engine, spark ignition, water-cooled, dual OHC, four valves per cylinder, transverse-mounted. Electronic, contact-free, microprocessor-controlled, multi-point fuel injection.	4-cylinder in-line engine, spark ignition, water-cooled, dual OHC, four valves per cylinder, transverse-mounted. Electronic, contact-free, microprocessor-controlled, multi-point fuel injection.
Version	Saloon	Saloon	Saloon
Cubic capacity cc	1,896	1,390	1,390
Bore x stroke mm	79.5 x 95.5	76.5 x 75.6	76.5 x 75.6
Air pollution regulation	EUIII	EUIV	EUIV
Compression ratio	19.5:1	10.5:1	10.5:1
Battery	12V/70Ah	12V/44Ah	12V/44Ah
Alternator	120Ah	120Ah	120Ah
Weight			
Kerb weight* lbs (kg)	2,745 (1,245)	2,679 (1,215)	2,612 (1,185)
Total weight lbs (kg)	3,682 (1,670)	3,616 (1,640)	3,550 (1,610)
Payload* lbs (kg)	937 (425)	937 (425)	937 (425)
Max roof load lbs (kg)	165 (75)	165 (75)	165 (75)
Towing unbraked max lbs (kg)	992 (450)	992 (450)	992 (450)
Towing braked max lbs (kg)	1,763 (800)	1,763 (800)	1,874 (850)
Nose weight max lbs (kg)	110 (50)	110 (50)	110 (50)
Performance			
Max speed mph (km/h)	96 (155)	103 (166)	115 (185)
Acceleration 0-62mph	19.0	17.3	11.6
Max. performance (Bhp/rpm)	64/4,000	75/5,000	100/6,000
Max. torque (Nm/rpm)	125/1,600-2,800	126/3,800	126/4,400
Fuel consumption mpg (l/100km)			
Urban**	44.1 (6.4)	27.2 (10.4)	31.4 (9.0)
Extra Urban**	68.9 (4.1)	47.1 (6.0)	52.3 (5.4)
Combined**	57.6 (4.9)	37.2 (7.6)	42.2 (6.7)
CO ₂ emissions g/km**	132	182	161
Insurance Group	3E	3E	5A

* Weight depending on equipment level ** Fuel consumption depending on equipment level according to EU Directive 93/116

Power transmission

Clutch	Hydraulically-activated single-plate dry clutch with diaphragm spring, asbestos-free coating.
Manual transmission	Five-speed manual transmission, fully synchronised with direct gearshift.
Automatic transmission	Four-speed with fuzzy logic system (only with 1.4/75bhp).
Tank	
Fuel tank content (L)	45
Fuel	Unleaded petrol RON 95 or unleaded petrol RON 91*. Unleaded petrol RON 98 or unleaded petrol RON 95** (1.4/100bhp, Diesel (1.9 SDI/64bhp)).
Bodywork	
Body type	Five-door, five-seat, double-space steel bodywork, fully zinc-coated.
Wind resistance factor c _w	0.31

Chassis

Front axle/rear axle	McPherson strut with lower control arms and transverse torsion stabiliser/crank axle with trailing arms.
Suspension	Coil springs, telescopic shock absorbers, rear springs located outside the shock absorber.
Braking system	Hydraulic dual-circuits brake in diagonal configuration, with a vacuum booster with rear brake force limiter, dual master cylinder (for 1.4/100bhp standard with ABS + EDL + ASR).
Front brakes	Ventilated disc brakes in sliding calliper design with piston.
Rear brakes	Drum brakes with two self-adjusting brake shoes, or disc brakes (depending on engine type).
Handbrake	Mechanical handbrake operating on rear wheels.
Steering	Maintenance-free rack-and-pinion steering with power assist.
Turning circle (m)	10.48
Wheels/tyres	Steel rim 5J x 14"/165/70 R14.

* Lower efficiency when using RON 91 petrol.

** Lower efficiency when using RON 95 petrol.

FA 012 20 11/03

Welcome to your Skoda Retailer

The information in this brochure referring to specification, design, equipment, material and external appearance relates to the time at which this brochure was printed. Whilst every effort is made to ensure its accuracy, the information in this brochure is not binding and is subject to alteration. Some illustrations in this brochure depict left hand drive models, with both standard and optional equipment shown. Please confirm exact specifications, prices and colour availability with your Skoda Retailer who will be notified of any specification changes as they occur.

Edition: UK 11/03

Information: 08457 745 745

Internet: www.skoda.co.uk

E-mail: customerservices@skoda.co.uk