



TOYOTA

COROLLA





Dramatic and fulfilling — outside and inside

With its dramatic styling, exhilarating performance and cutting-edge functionality, the next-generation evolution of Corolla DNA will exceed your high expectations. Its many attractions will send your spirits soaring.



The refreshing feeling of exceptional comfort

Your enjoyment of the spacious cabin created by the innovative packaging is deepened by your pleasure in the refined comfort and discreet details.



Packaging: The bold styling with its short overhang combines the excellent packaging enabled by the long wheelbase with easy access to the spacious comfort of the cabin. Comfort in the rear seat is enhanced by details like the flat floor and extended space behind the center console box, and even the attention paid to the shape of the front seatbacks.



60/40 split, fold-down rear seatbacks: The versatile fold-down seatbacks let you configure a range of passenger and luggage combinations, making it easy to load and carry long and bulky loads.



Note: Please inquire at your local dealer for details on the availability of features.



Overhead console: *It provides handy storage for keeping small items within easy reach when you need them.*



Glove box: *The release handle on the large glove box is positioned towards the center of the vehicle for easy use from the driver's seat.*



Center console box: *The lid slides to provide a comfortable armrest. Two levers enable you to open either the upper tray or box in one movement.*



Front cupholders: *This convenient holder for two cups features a partition which can be slid or detached to hold and secure different sized cups.*



Rear cupholders: *Two cupholders in the rear center armrest are among eight drink holders in total throughout the cabin.*



Trunk space: *The ample trunk can accommodate various sizes of luggage. When the doors are unlocked the trunk can be opened by pushing the switch integrated in the license plate garnish.*





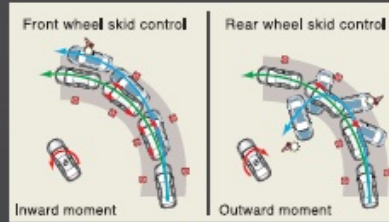
In pursuit of user-friendly functionality

The smart operation and simplicity of the features are evident in the abundant storage spaces, their thoughtful shapes and carefully considered placement enhancing your enjoyment in various driving scenarios.

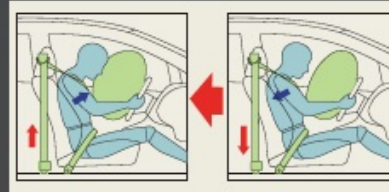
*Note: Features shown are optional. Details may differ on the availability of features.

*¹ VSC: Vehicle Stability Control. *² WIL: Whiplash Injury Lessening. *³ The SRS (Supplemental Restraint System) airbags are supplemental devices to be used with the seatbelts. The driver and all passengers in the vehicle must wear their seatbelts properly at all times. Never install a rear-facing CRS (Child Restraint System) on the front passenger's seat. For a forward-facing CRS, it is recommended you use it in the rear seats. Please do not use accessories for the seats which cover the parts where the SRS side airbags should inflate. Such accessories may prevent the SRS side airbags from activating correctly, causing serious injury (Toyota genuine seat covers are specially designed for models equipped with the SRS side airbags. To find out about availability in your area, please inquire at your local dealer). The photo shows all the SRS airbags activated for display purposes only (the SRS side and curtain shield airbags only inflate on the side of the collision in an actual accident). For details on these and other important safety features, be sure to read the Owner's Manual carefully.

Note: Please inquire at your local dealer for details on the availability of features.



VSC: When sensors detect conditions likely to cause skidding, it helps prevent front or rear wheel slip by optimally controlling engine power and braking force. *¹



Pretensioners/force limiters (Front seatbelts): In strong frontal collisions, pretensioners rewind the seatbelts instantly to help assist occupant restraint. Force limiters help to relieve the force on the upper torso.



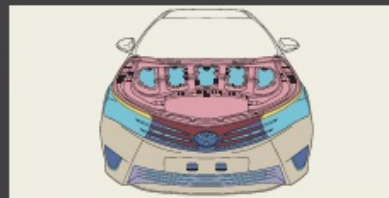
Headlamps: They not only add a feeling of luxury with their stylish design, but also distribute light in a long wide pattern, contributing to excellent visibility at night.



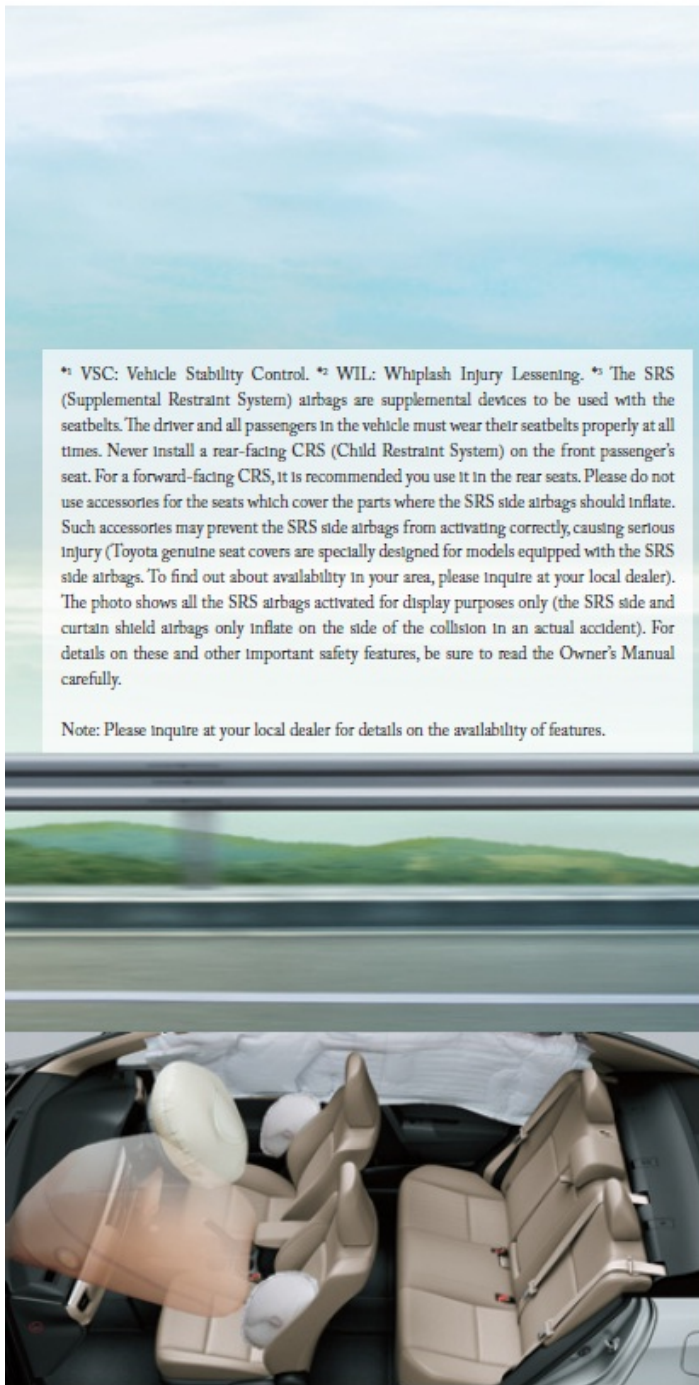
WIL concept front seats: In a rear-end collision the occupant's back sinks into the seatback while the headrest simultaneously supports the head, to help reduce injury to the neck. *²

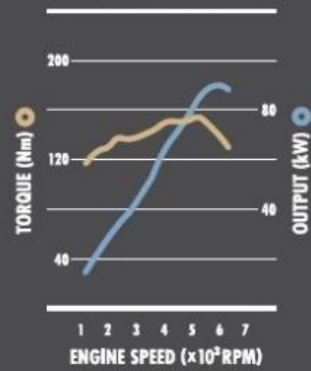


Crash safety body: It is comprised of a high integrity cabin with front and rear crumple zones that help absorb impact energy in a collision. It also incorporates a compatibility concept that pursued the coexistence of vehicles of different weight and height in a collision.



Body structure to help reduce injury to pedestrians: Impact absorbing measures include the hood, cowl and front fender bracket.





1.6V 1.6-liter (1ZR-FE)
 90 kW/ 6000rpm (SAE net)
 154 Nm/ 5200rpm (SAE net)



Engine / 4 Super ECT: *The compact, lightweight engine harnesses advanced technologies to deliver exhilarating performance and outstanding fuel economy. A super intelligent 4-speed automatic transmission (4 Super ECT) provides excellent response and smooth shift feeling. It features uphill/downhill shift control which automatically selects a suitable gear when driving uphill or downhill.**

14



Suspension: *Optimizing various suspension components, together with the sure braking performance, helps realize excellent stability, control and ride comfort.*



Aerodynamics: *Careful shaping of the body and aero stabilizing fins on the base of the door mirrors and the rear combination lamps enhance the airflow effect.*



Quietness: *Optimum placement of noise-absorbing, noise-insulating and vibration-damping materials contributes to the outstanding quietness in the cabin.*

* ECT: Electronic Controlled Transmission.

Exterior Colors



Super White II <040>



Silver Metallic <1D4>



Gray Metallic <1F9>



Attitude Black Mica <218>



Red Mica Metallic <3R3>



Dark Brown Mica Metallic <4U3>



True Blue Mica Metallic <8W1>

Interior Colors



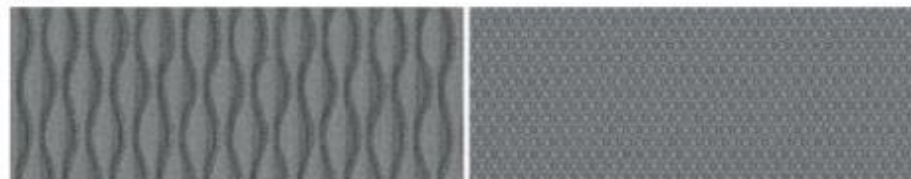
Ivory



Ivory (Fabric)



Gray



Gray (Fabric)

Note: Please inquire at your local dealer for colour combination availability.

SPECIFICATIONS		16V 1.6-liter (1ZR-FE)	
		GLi	XLi
Transmission		4-speed automatic/6-speed manual	
DIMENSIONS & WEIGHT			
Overall length X width X height	mm	4620 X 1775 X 1460,1475 ¹⁾	
Wheelbase	mm	2700	
Tread	Front/Rear	1530, 1525 ²⁾ /1535	
Ground clearance	mm	130, 145 ²⁾	
Curb weight	kg	1240-1260	1240-1250
Gross vehicle weight	kg	1615-1635	1615-1625
CHASSIS			
Suspension	Front	MacPherson struts (L-shaped lower arms, gas-filled shock absorbers with a stabilizer bar)	
	Rear	Torsion beam (Toe correct bushing-type, gas-filled shock absorbers with a stabilizer bar)	
Brakes	Front / Rear	Ventilated discs /Discs	
Minimum turning radius (Tires)	m	5.4	
Fuel tank capacity	liters	55	
Tires		195 / 65R15	
ENGINE			
Type		16V 1.6-liter (1ZR-FE)	
Piston displacement	cc	1598	
Max. output (SAE net)	kW / rpm	90/6000	
Max. torque (SAE net)	Nm / rpm	154/5200	
Fuel system		Electronic Fuel Injection	

¹⁾ Rough road package. ²⁾ VVT-i: Variable Valve Timing-intelligent.

- Addition of extra features may change figures in this chart.
- Toyota Motor Corporation reserves the right to alter any details of specifications and equipment without notice. Details of specifications and equipment are also subject to change to suit local conditions and requirements. Please inquire at your local dealer for details of any such changes that might be required for your area.
- Note : Vehicles pictured and specifications detailed in this catalog may vary from models and equipment available in your area.
- Vehicle body colour might differ slightly from the printed photos in this catalog.

