



Das Auto.

The Scirocco





See the **world** from
a **different**
perspective.

4	The Scirocco
14	Design
16	Equipment
18	The Scirocco and Scirocco BlueMotion Technology
20	The Scirocco GT and GT BlueMotion Technology
22	The Scirocco R
26	BlueMotion Technology
28	Engines and gearboxes
30	Safety
32	Optional equipment
36	Paint
40	Upholstery
41	Combinations
42	Technical specification
44	Technology
46	Volkswagen service

Are you ready to fall
under the
Scirocco's spell?

Prepare to be captivated. Because from the minute you first see the Scirocco, this outstanding car will weave its magic. With its streamlined bodyshape, dynamic handling, sports chassis and luxurious interior, this is a true sports performer that delivers everything you could ask for, right down to the affordable price. Step inside and feel your pulse start racing, take to the road and you won't want to stop. Because when you put the Scirocco through its paces, the driving pleasure just goes on and on.





Let the
journey begin.

Once started, there's
no stopping you.



Model shown is Scirocco GT with optional panoramic sunroof.



Run from the mundane.

Exhilaration at
your fingertips.



Model shown is Scirocco GT 2.0 TSI 210 PS.

Design

With its streamlined bodyshape and flowing contours, the Scirocco exudes style, while dynamic details such as the curved design of the halogen clear headlights, enhances its sporting character. Naturally, first class workmanship and high quality materials throughout go without saying.



The **chrome twin exhaust tailpipe** adds charisma and presence, hinting at the power beneath the bonnet.

GT 2.0 TSI 210 PS only.



Darkened rear side and rear windows reduce the amount of sunlight entering the cabin by up to 65% from the B pillar back, contributing to a pleasant interior temperature and enhancing the sports appeal of the Scirocco. Standard on GT, GT BlueMotion Technology and R and optional on Scirocco and Scirocco BlueMotion Technology models.



The Scirocco is a pleasure to drive as it is. But with its distinctive **18 inch 'Interlagos' alloy wheels** with 235/40 R18 self-sealing tyres, it creates an even sportier and individual look. It is made exclusively as a one-piece cast aluminium wheel, which lowers the weight while ensuring greater suspension responsiveness. Standard on GT, GT BlueMotion Technology and optional on Scirocco and Scirocco BlueMotion Technology models.



17 inch 'Donington' alloy wheels with 235/45 R17 self-sealing tyres create a sporty and stylish look for your Scirocco. Standard on Scirocco and Scirocco BlueMotion Technology models.



The distinctive **rear light clusters** blend perfectly with the lines of the Scirocco, complementing its striking design. Its powerful profile is further accentuated by the horizontal, flat surface of the lights, with their dynamic contours.



The sleek shaped **body-coloured door handles** complement the Scirocco's sleek profile.



Body-coloured door mirrors with integrated indicators contribute to the streamlined, sporty look.



The front of the Scirocco immediately attracts attention, with its sleek bonnet and striking **honeycomb front air intake**. Together with a **high gloss black radiator grille**, they create a stunning overall effect, reinforced by the Volkswagen roundel fitted flush to the bonnet, accentuating the flowing bodylines. Front fog lights standard on GT, GT BlueMotion Technology and optional on Scirocco and Scirocco BlueMotion Technology models. Winter pack is standard on R and optional on all other models.

Model shown is GT.
Please note, Winter pack on R models does not include heated windscreen washer jets.



A world
of **experience**
awaits you.

Model shown is Scirocco with optional front fog lights, panoramic sunroof and Winter pack.

The Scirocco and Scirocco BlueMotion Technology

As you'd expect with a luxury sports coupé, the Scirocco offers a high level of specification, with many advanced features fitted as standard, ensuring an interior driving comfort that is second to none.



'Donington' 7½ x 17 alloy wheels with 235/45 R17 self-sealing tyres and anti-theft wheel bolts enhance the look of the Scirocco leaving a lasting impression.



Adaptive Chassis Control (ACC) allows you to select Normal, Comfort or Sport settings for your journey, enabling the electrically regulated dampers and steering to adapt optimally to conditions and driving style. Optional on Scirocco 1.4 litre TSI 122 PS and standard on all other models.



The **luxurious interior** combines ergonomics with visual appeal and practicality. **Front sports seats** provide maximum support when cornering, while the **leather trimmed steering wheel, gear knob and handbrake grip** offer optimum grip, an essential requirement for such an agile performer. Stylish **matt chrome decorative inserts** provide the perfect finishing touch to the distinctive interior design.



The **multifunction computer (Highline)** provides useful information such as average and current fuel consumption, journey time, outside temperature and range left in the fuel tank. Specify a BlueMotion Technology model or manual gearbox and the multifunction computer includes visual gear change recommendation for optimum fuel consumption.



The unique **BlueMotion Technology badging** displays the environmental credentials of the Scirocco BlueMotion Technology and makes it instantly recognisable. For more information on BlueMotion Technologies, please see pages 26-27.



The **Multi Device Interface (MDI)** with iPod and USB cables enables you to connect and charge a compatible device, while track selection is viewed and selected via the vehicle's radio system. Interior shown features optional 'Vienna' leather upholstery.



The **RCD 510 touch-screen radio/dash-mounted MP3 compatible six CD autochanger** features a large 6½ inch colour display, with intuitive menu navigation and touch-screen operation. It also features an AUX-in socket for connection to an external multimedia source (e.g. iPod or MP3 player) and an SD memory card slot. Also shown is **Bluetooth telephone preparation** for HFP (Hands Free Profile) enabled telephones, allowing you to make and receive phone calls via the RCD 510 touch-screen radio system. The phone book and call information is displayed on the audio system's display and on the multifunction computer (Highline).

Phones must have HFP (Hands Free Profile), please contact your Volkswagen retailer for phone compatibility.



'**Climatic**' **semi-automatic air conditioning system** is extremely user-friendly, providing your required cabin temperature quickly and efficiently, while maintaining your selected temperature.



The **sporty interior** provides a dynamic environment with added comfort and convenience. **2Zone electronic climate control** allows the driver and front seat passenger to select their own individual temperature settings, while controls of the audio system, telephone preparation for Bluetooth HFP (Hands Free Profile) enabled telephones* and **multifunction computer (Highline)** can be selected via the **leather trimmed multifunction steering wheel**. A black rooflining is also fitted to Scirocco GT 2.0 TSI 210 PS models, replacing the standard grey rooflining, ensuring an ever sportier feel. Interior shown is Scirocco GT 2.0 TSI 210 PS DSG with optional RNS 510 touch-screen navigation/DVD radio system and 'Vienna' leather upholstery.

* Phones must be Bluetooth HFP (Hands Free Profile) compatible, please contact your Volkswagen retailer for specific phone compatibility.

The Scirocco GT and GT BlueMotion Technology

The GT builds over the already high specification of the Scirocco and adds some additional styling to the exterior that undoubtedly makes the GT stand out from the crowd. Inside, a higher level of specification and equipment ensures that every journey is made even more enjoyable.



'Interlagos' 8J x 18 alloy wheels with 235/40 R18 self-sealing tyres and anti-theft wheel bolts confirm a true pedigree sports performer.



The **2Zone electronic climate control with automatic air recirculation**, courtesy of an air quality sensor, provides temperature controls that can be individually adjusted by the driver and front passenger, enabling them to set their own desired temperature. The system ensures all passengers enjoy a comfortable journey and the temperature selected is displayed accurately, within half a degree Celsius.



Specify a DSG gearbox and the leather trimmed multifunction steering wheel features **paddle shift** as standard, to allow quick gear changes without taking your hands off the steering wheel.



Heat insulating rear tinted windows from the B pillar back are 65% light absorbing, and help reduce exposure to the sun's rays whilst giving your Scirocco a sporty look.



Front fog lights add a striking look to the front of the vehicle, and also provide additional safety.



The **chrome twin exhaust tailpipe** that features on the GT 2.0 TSI 210 PS adds charisma and presence.

The
Scirocco R.



Model shown is Scirocco R with optional 19" 'Talladega' alloy wheels and metallic paint.

The Scirocco R

There's really only one word to describe the Scirocco R. Fast. A combination of the latest engine technology, lowered sports suspension and aerodynamic styling ensures this is the fastest ever Scirocco. If the exterior styling gives you a hint of what is to come, the unique interior adds to the anticipation. But nothing prepares you for the drive itself. That is something you have to experience.

Its glossy black grille and front air intake in the uniquely shaped bumper give the Scirocco R its distinctive appearance, and the chrome 'R' badge hints at the power lurking beneath the bonnet. The XDS electronic differential lock improves traction and helps keep the 18 inch 'Talladega' alloys firmly on the road, while the brake calipers are painted in 'Gloss Black' and are adorned with the exclusive 'R' logo. Body-coloured widened side skirts not only enhance the Scirocco's aerodynamics, but also accentuate its unique 'R' sports suspension lowered by approx. 10 mm, and chrome exhaust tailpipes are integrated either side of the 'Gloss Black' rear diffuser beneath the uniquely designed rear bumper. Darkened 'Cherry red' rear light clusters and 'Gloss Black' door mirrors convey added sporting prowess and Bi-Xenon headlights offer the driver clearer vision of the road ahead. Separate daytime running lights, set into the front bumper, and the rear number plate lights both utilise LED technology to ensure your vehicle is also visible to other road users in any weather.



Clear white instrument lighting with atmospheric illumination and **blue needles** on all dials hint at the Scirocco R's sporting intent. The multifunction computer (Highline) can be operated easily via the multifunction steering wheel, providing the driver with essential information.



The **Scirocco R's unique interior** features an abundance of the finest quality materials, all finished to the highest standards of craftsmanship. Contemporary 'Kyalami' upholstery in Titan Black with 'San Remo' alcantara side bolsters in Crystal Grey add a sporty, elegant look to the heated front sports seats. Other details include the 'R' logo embroidered on the front head restraints, front and rear carpet mats and a luxurious leather trimmed multifunction steering wheel featuring 'Gloss Black' inserts, 'R' logo and contrast stitching. 'R' branded aluminium-look pedals, kick plates and gear knob combine with 'Silver Lane' decorative inserts to give the passenger compartment a real sports identity, making any journey one of pure, unadulterated fun.



LED daytime running lights give a purposeful edge to the Scirocco R, while Bi-Xenon headlights with headlight washers ensure a clear view of the road ahead.



Neatly integrated into either side of the 'Gloss Black' rear diffuser, the **chrome exhaust tailpipes** hint at the power beneath the bonnet, visually emphasising the excellent roadholding of the Scirocco R.

Exterior shown features optional parking sensors.



'Talladega' 8J x 18 alloy wheels with 235/40 R18 self-sealing tyres ensure maximum grip, while 'Gloss Black' brake calipers enhance the sporty appearance.



A **multifunction computer (Highline)** with visual gear change recommendation for optimum fuel consumption – indicates when you should change gears to drive more economically. Standard on all manual and BlueMotion Technology models.



The **Start/Stop function** momentarily switches off the engine when the vehicle is stationary, in neutral and the clutch disengaged. The 'Start Stop' symbol is then displayed on the multifunction computer (Highline). When the engine automatically restarts after depressing the clutch to resume driving, the multifunction computer then returns to the previous display.

Think Blue.

To help reduce the impact on our environment, not only have we come up with a solution, we've designed many. BlueMotion Technologies is our contribution to sustainable motoring. This means we offer optimum solutions for every demand, which make driving more fuel efficient and cleaner. BlueMotion Technologies are less harmful to our environment and your wallet, without having to give up everyday practicality and comfort.

The BlueMotion Technology Sciroccos, available with a 2.0 litre TDI 140 PS engine, offer the same refinement and comfort as the standard Scirocco and Scirocco GT, but with added environmental credentials. They meet the proposed EURO 5 emissions standard, have a Diesel Particulate Filter (DPF) and are packed full of technologies to save valuable fuel and have a smaller impact on our environment. Technologies such as the Start/Stop function which saves fuel when the vehicle is stationary, just put the handbrake on, the gearbox in neutral and the engine turns itself off. Put it back into gear and the engine restarts immediately and automatically, reducing consumption and CO₂ emissions. When the multifunction computer (Highline) displays the Start/Stop symbol, you know it is active. It will also display visual gear change recommendations on manual gearbox models, advising the best time to change gear for optimum fuel consumption. All Scirocco BlueMotion Technology models are also fitted with a battery regeneration (recuperation) system, meaning that energy is recovered from the braking process and used to charge the battery, rather than using fuel for this process.



BLUEMOTION
— TECHNOLOGIES —

Externally, Volkswagen's **'BlueMotion Technology'** badging identifies the cleanest, most energy-efficient cars in our range.

Engines and gearboxes

Whichever engine or gearbox combination you select for your Scirocco, you can be sure of outstanding performance, excellent torque and efficient fuel consumption. That's because advanced Volkswagen engine technology delivers phenomenal results, whatever the length of your journey – long distance or a quick spin, whether you opt for a petrol or diesel variant. The Scirocco features a hill hold function which, when you release the foot brake, will hold your Scirocco for a further two seconds, preventing it from rolling back when pulling away or during a hill start, making every journey just that little bit easier.

The Scirocco R features XDS, an extension of the well-known Electronic Differential Lock (EDL) function. This is linked to the Electronic Stabilisation Programme (ESP) hydraulics and works by applying pressure to the inner front wheel during fast cornering to prevent spinning. The one-sided, precise brake pressure helps to maximise traction, reduce understeer and improve responsiveness, thus making cornering even more sporty, safe and accurate.



Hi-tech petrol engines feature innovative **TSI technology**, which utilises a combination of downsizing, direct injection and turbocharging to produce impressive torque and power output, alongside low fuel consumption.



The **TDI diesel engines** use common rail technology and allied with BlueMotion Technologies, can help lower CO₂ emissions and offer better fuel economy. For more information on BlueMotion Technologies, please see pages 26-27.



The **2.0 litre TSI 265 PS** engine is a perfect example of TSI technology. Direct injection, downsizing and sophisticated turbocharging technology combine to produce the most powerful TSI engine ever to power the Scirocco. This engine also benefits from TSI characteristics such as excellent torque, impressive fuel consumption and reduced emissions compared to previous range-topping Volkswagens.



Specify a DSG gearbox on GT and R models and the leather trimmed multifunction steering wheel features **paddle shift** as standard, to allow quick gear changes without taking your hands off the steering wheel.



The fully synchronised **six speed manual gearbox** is easy to use, giving you total control.

Interior shown is GT.



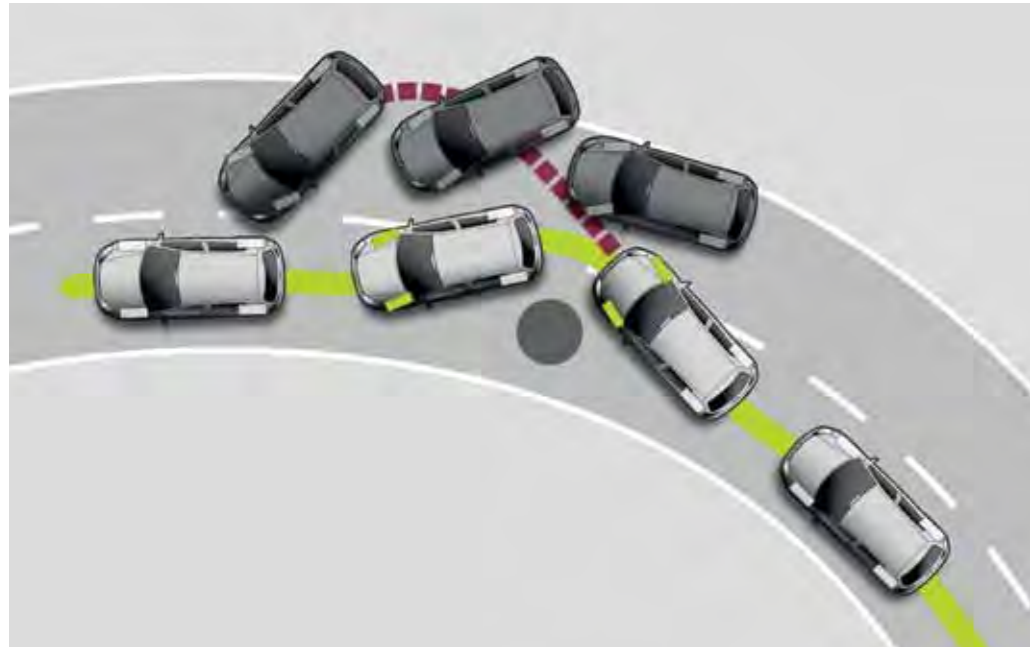
The six or seven speed **DSG gearboxes** offer a genuine alternative to a manual gearbox because they are able to change gear faster than a manual gearbox and more smoothly than a conventional automatic.

Interior shown is GT.



The **Adaptive Chassis Control (ACC)** adapts the damping control and shock absorption rate to the road conditions and driving style you require within milliseconds. At the touch of a button, you decide how firm or comfortable you wish to set the suspension, with a choice of three settings: Normal, Comfort or Sport. In Normal mode, the principal advantage of the system is that the dampers are constantly adjusted to the road and the driving conditions. In Sport mode, the dampers are considerably stiffer and the steering becomes more responsive. A direct contrast is Comfort mode where the suspension is adjusted to maximise passenger comfort, particularly when travelling on poor road surfaces or long motorway journeys. Optional on Scirocco 1.4 litre TSI 122 PS and standard on all other models.

Image shown is for illustration purposes only and may not necessarily reflect UK specification.



The sensor-controlled **Electronic Stabilisation Programme (ESP)** recognises critical driving situations and reacts in milliseconds by controlling the speed of individual wheels, helping to bring the vehicle under control.



An **extensive airbag system** offers protection to all passengers in the Scirocco in the event of an emergency situation. The system comprises airbags for front passengers, curtain airbags for front and rear passengers, with front seat side impact airbags providing additional lateral protection for the driver and front seat passenger. There is also a passenger's airbag deactivation switch on the front passenger side. Deployment of the airbags is managed via crash sensors: if an impact is registered, the gas generator ignites, which then fills the airbag within 30 to 40 milliseconds.

Image shown is for illustration purposes only and may not necessarily reflect UK specification.



The Scirocco's **safety systems** comply with the highest safety standards and have been extensively tested to ensure they provide maximum protection in all situations.



Disc brakes front and rear, (front ventilated), ensure exceptional thermal performance, even when the temperature of the brakes rises to extreme levels.



In the event of a change in tyre pressure, the **flat tyre indicator** symbol appears in the multifunction display, advising the driver to rectify the situation. Standard on all models.

Safety

Naturally, as a sports coupé, the Scirocco offers impressive power and performance. But it also offers intelligence too, as demonstrated by its first class safety specification, designed to help you manage such occurrences as bad weather, sharp bends and tight parking spaces.



Front fog lights improve the illumination of the road ahead in bad visibility conditions, such as fog, snow, or driving rain, and are an important element of the Scirocco's safety specification. Standard on GT, GT BlueMotion Technology and optional on Scirocco and Scirocco BlueMotion Technology models.



Rear parking sensors help you park your Scirocco with the greatest of ease, aided by an audible warning and a visual display via the RCD 510 radio system's display. Optional on all models.

Optional equipment

Practical extras can be an extremely useful way of creating exactly the Scirocco you desire. With this in mind, a selection of different options are available, each one ensuring your Scirocco meets your individual requirements. This reflection of your personality and lifestyle makes the Scirocco more irresistible than ever. So, why fight the temptation?



Parking sensors assist in parking manoeuvres by emitting an audible and visible warning. An optical parking display via the vehicle's audio display will inform the driver as to how close the vehicle is to any obstacles. While audibly, the faster the sound frequency the closer you are to an obstacle. Optional on all models.



Front fog lights add a striking look to the front of the vehicle and also provide additional safety in bad weather or where there is poor visibility. Optional on Scirocco and Scirocco BlueMotion Technology and standard on GT, GT BlueMotion Technology models.



The **multifunction steering wheel** in sumptuous leather finish, enables you to control the radio, Bluetooth telephone preparation for HFP (Hands Free Profile) enabled telephones and multifunction computer (Highline) without taking your hands off the wheel, thanks to the intuitively positioned buttons. On DSG models the multifunction steering wheel also features paddle shift, allowing manual gear changes from the steering wheel. Standard on GT, GT BlueMotion Technology and R, and optional on Scirocco and Scirocco BlueMotion Technology models.

Phones must be Bluetooth HFP (Hands Free Profile) compatible, please contact your Volkswagen retailer for specific phone compatibility.



For relaxed motorway driving, **cruise control** is the perfect answer. Operational at speeds above approximately 20 mph, the system can be set to maintain a constant speed, helping to take some of the stress out of your journey. Optional on all models.



The **RNS 315 touch-screen navigation/radio system** with MP3 compatible CD player features a 5 inch colour display with clearly arranged map navigation to guide you to your destination. Also featured is an SD card reader and practical AUX-in socket for connecting external audio devices such as an iPod or MP3 player. Optional on all models.



The **2Zone electronic climate control** maintains a constant preset temperature, providing separately controllable air conditioning for the driver and front passenger, practically without a draught. The automatic air recirculation mode also ensures that passengers are protected from any unpleasant odours. Standard on GT, GT BlueMotion Technology and R, and optional on Scirocco and Scirocco BlueMotion Technology models. Heated front seats form part of the **Winter pack**, which also includes headlight washers, heated windscreen washer jets and low washer fluid warning light. Standard on R and optional on all other models.

Please note, Winter pack on R models does not include heated windscreen washer jets.



The **RNS 510 touch-screen navigation/DVD radio system** with integrated voice control will guide you to your destination using pre-loaded navigation data from the 30 GB hard drive and includes a 6½" colour display, perspective (bird's-eye) view and touch-screen operation. This state-of-the-art system responds to spoken voice commands for navigation, CD and radio functions. It also plays DVDs (when the vehicle is stationary) and music from the DVD drive, 30 GB hard drive or via the MDI (Multi Device Interface) or AUX-in socket. Optional on all models.



Another addition to improve your journey's soundtrack is the **'Dynaudio' sound system** incorporating an eight channel digital amplifier. It provides impressive acoustics and the highest levels of audio pleasure, delivering 300 watts through eight high performance speakers. Optional on all models.



In addition to your RNS 510 touch-screen navigation/DVD radio system you can also specify an **armrest-mounted six CD autochanger**, in lieu of MDI (Multi Device Interface), allowing you hours of uninterrupted listening pleasure. Optional on all models.

Luxurious **'Vienna' leather upholstery** in Black, Truffle or 'Exclusive' two-tone Cornsilk Beige/Black includes black rooflining and heated front sports seats which provide optimum lateral support on tight bends ensuring maximum driving fun. The electrically-adjustable driver's seat lumbar support will ensure the best possible seating position on every journey. Also available as an option for the R model are sumptuous and sporty 'Recaro' sports seats upholstered in 'Vienna' leather with 'San Remo' alcantara seat centre sections (not shown). Please note, Black is available on all models, Truffle is available on Scirocco and GT models and 'Exclusive' two-tone Cornsilk Beige/Black is only available on GT models.

Some parts of leather interior contain artificial leather.



Specify leather upholstery option and you will also benefit from **heated front sports seats** with three individual preset temperature settings for both the driver and front seat passenger.

Interior shown is GT.



When ordered in conjunction with leather upholstery, the **12-way electrically-adjustable driver's seat including lumbar support**, offers adjustments for your seating position, enabling you to enjoy the most ergonomic and beneficial support for your spine. Optional on all models.

Not in conjunction with 'Recaro' part leather sports seats on R models. Some parts of leather interior contain artificial leather.



Electrically heated, adjustable and **foldable door mirrors** with integrated indicators can be easily operated from the comfort of the driver's seat. Optional on all models.



'Lugano Black' 8J x 19 alloy wheels with 235/35 R19 tyres and anti-theft wheel bolts form part of the Style pack, and add even more individuality to your GT. Also forming part of the **Style pack** are **'Piano Black'** decorative inserts in the dash and centre console. Deep lacquer, applied by hand in several layers creates a rich three-dimensional structure and depth, providing your Scirocco GT with a touch of opulence. Optional on GT and GT BlueMotion Technology models.

Please note, 19 inch alloy wheels and tyres in lieu of self-sealing tyres and flat tyre indicator.



'Lugano' 8J x 19 alloy wheels with 235/35 R19 tyres and anti-theft wheel bolts provide a sporty and dynamic addition to the exterior of the GT. Optional on GT and GT BlueMotion Technology models.

Please note, 19 inch alloy wheels and tyres in lieu of self-sealing tyres and flat tyre indicator.



'Talladega' 8J x 19 alloy wheels with 235/35 R19 tyres and anti-theft wheel bolts add even more style and finesse to the exterior of the R. Optional on R models.

Please note, 19 inch alloy wheels and tyres in lieu of self-sealing tyres and flat tyre indicator.



Heat insulating rear tinted windows from the B pillar back are 65% light absorbing, and helps reduce exposure to the sun's rays whilst giving your Scirocco a sporty look. Optional on Scirocco, Scirocco BlueMotion Technology and standard on GT, GT BlueMotion Technology and R models.



The **electric panoramic glass tilt only sunroof** is just as eye-catching from the outside as it is from the inside. Adding light and space, it fills the interior with additional natural light, providing an uninterrupted view of the sky overhead. Optional on all models.

Please note, with this option the storage compartment in roof console is removed.



Escape

the ordinary.

Paint



Rising Blue
Metallic*
4C

SC **GT** **R**



Viper Green
Metallic*
6B

SC **GT** **R**



Dark Oak
Metallic*
P0

SC **GT**



Salsa Red
Non-Metallic
4Y

SC **GT**



Silver Leaf
Metallic*
7B

SC **GT**



Indium Grey
Metallic*
X3

SC **GT**



Deep Black
Pearl Effect*
2T

SC **GT** **R**



Candy White
Non-Metallic
B4

SC **GT** **R**



Reflex Silver
Metallic*
8E

SC **GT** **R**



Night Blue
Metallic*
Z2

SC **GT**

* Optional at extra cost.

Please note: The print processes do not allow exact reproduction of the paint colours.

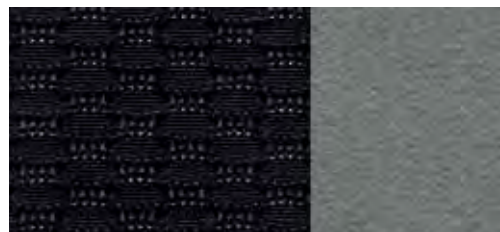
SC Scirocco **GT** GT **R** R

Upholstery



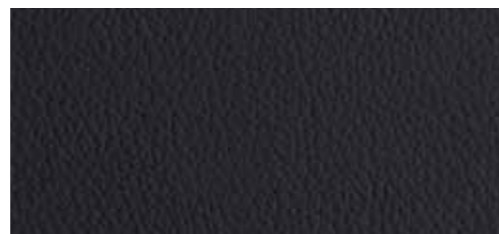
Sports seats in 'Merlin' cloth
Black (AZ)

Standard on Scirocco and GT models



Sports seats in 'Kyalami' cloth with 'San Remo' alcantara side bolsters
Titan Black/Crystal Grey (IH)

Standard on R models



Sports seats in 'Vienna' leather*
Black (QX)

Optional on Scirocco and GT models



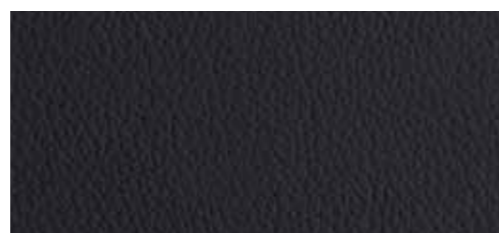
Sports seats in 'Vienna' leather*
Truffle (TL)

Optional on Scirocco and GT models



Sports seats in 'Exclusive' two-tone 'Vienna' leather**
Cornsilk Beige/Black (IJ)

Optional on GT models



Sports seats in 'Vienna' leather*
Black (QX)

Optional on R models



'Recaro' sports seats in 'Vienna' leather* with 'San Remo' alcantara seat centre sections
Titan Black/Crystal Grey (IC)

Optional on R models

* Optional at extra cost. Some parts of leather interior will contain artificial leather.
Please note: The print processes do not allow exact reproduction of the upholstery colours.

Combinations

Seat upholstery	Carpet	Dashboard	Salsa Red 4Y	Candy White B4	Rising Blue Metallic* 4C	Viper Green Metallic* 6B	Silver Leaf Metallic* 7B	Reflex Silver Metallic* 8E	Dark Oak Metallic* P0	Indium Grey Metallic* X3	Night Blue Metallic* Z2	Deep Black Pearl Effect* 2T
Sports seats in 'Merlin' cloth Standard on Scirocco and GT models Black (AZ)	Anthracite	Anthracite/Anthracite	●	●	●	●	●	●	●	●	●	●
Sports seats in 'Kyalami' cloth with 'San Remo' alcantara side bolsters Standard on R models Titan Black/Crystal Grey (IH)	Anthracite	Anthracite/Anthracite	-	●	●	●	-	●	-	-	-	●
Sports seats in 'Vienna' leather** Optional on Scirocco and GT models Black (QX)	Anthracite	Anthracite/Anthracite	○	○	○	○	○	○	○	○	○	○
Truffle (TL)	Anthracite	Anthracite/Anthracite	-	○	-	-	○	○	○	○	○	○
Sports seats in 'Exclusive' two-tone 'Vienna' leather** Optional on GT models Cornsilk Beige/Black (IJ)	Anthracite	Anthracite/Anthracite	○	-	○	○	○	○	○	-	○	○
Sports seats in 'Vienna' leather** Optional on R models Black (QX)	Anthracite	Anthracite/Anthracite	-	○	○	○	-	○	-	-	-	○
'Recaro' sports seats in 'Vienna' leather** with 'San Remo' alcantara seat centre sections Optional on R models Titan Black/Crystal Grey (IC)	Black	Black/Black	-	○	○	○	-	○	-	-	-	○

* Metallic and pearl effect paints, and 'Vienna' leather upholstery are optional at extra cost.
† Some parts of leather interior will contain artificial leather.
● Standard. ○ Optional at extra cost. - Not available.

Technical specification

	Scirocco 1.4 litre TSI 122 PS	Scirocco 1.4 litre TSI 160 PS	GT 2.0 litre TSI 210 PS	R 2.0 litre TSI 265 PS	Scirocco, GT 2.0 litre TDI 140 PS BlueMotion Technology	GT 2.0 litre TDI 170 PS
Engine						
Engine type	Four cylinder petrol	Four cylinder petrol	Four cylinder petrol	Four cylinder petrol	Four cylinder diesel	Four cylinder diesel
Cubic capacity, ltrs/cc	1.4/1390	1.4/1390	2.0/1984	2.0/1984	2.0/1968	2.0/1968
Max. output, PS ⁽⁰¹⁾ /kW	122/90	160/118	210/155	265/195	140/103	170/125
at rpm	5000	5800	5300-6200	6000	4000	4200
Max. torque, lbs.ft/Nm	148/200	177/240	207/280	258/350	236/320	258/350
at rpm	1500-4000	1500-4500	1700-5200	2500-5000	1750-2500	1750-2500
Gearbox	Six speed manual	Six speed manual	Six speed manual	Six speed manual	Six speed manual	Six speed manual
	–	Seven speed auto DSG	Six speed auto DSG	Six speed auto DSG	Six speed auto DSG	Six speed auto DSG
Weights, kgs						
Manual gearbox:						
Unladen weight ⁽⁰²⁾	1319	1346	1373	1419	1379	1395
Gross vehicle weight	1690	1720	1740	1770	1750	1770
Payload ⁽⁰²⁾	446	449	442	426	446	450
Axle load limit: Front	970	1000	1020	1050	1030	1050
Rear	770	770	770	770	770	770
Automatic DSG gearbox:						
Unladen weight ⁽⁰²⁾	–	1360	1393	1439	1395	1421
Gross vehicle weight	–	1730	1760	1790	1770	1800
Payload ⁽⁰²⁾	–	445	442	426	450	454
Axle load limit: Front	–	1010	1040	1070	1050	1080
Rear	–	770	770	770	770	770
Load limits, kgs ⁽⁰³⁾						
Max. roof load	75	75	75	75	75	75
Performance						
Top speed, mph (km/h), where the law permits						
Manual gearbox	124 (200)	135 (218)	149 (240)	155 (250)	129 (207)	138 (222)
Auto DSG gearbox	–	135 (218)	148 (238)	155 (250)	127 (205)	136 (220)

	Scirocco 1.4 litre TSI 122 PS	Scirocco 1.4 litre TSI 160 PS	GT 2.0 litre TSI 210 PS	R 2.0 litre TSI 265 PS	Scirocco, GT 2.0 litre TDI 140 PS BlueMotion Technology	GT 2.0 litre TDI 170 PS
Performance (continued)						
Acceleration, secs 0 - 62 mph						
Manual gearbox	9.7	8.0	6.9	6.0	9.3	8.1
Auto DSG gearbox	–	8.0	6.9	5.8	9.3	8.1
ABI insurance group, 1 - 50 [†]	18E	28E	32E	34E	22E	26E
Environmental information						
Fuel grade, minimum	Unleaded, 95 RON	Unleaded, 95 RON	Unleaded, 95 RON	Unleaded, 95 RON	Diesel ⁽⁰⁴⁾	Diesel ⁽⁰⁴⁾
Fuel tank capacity, galls/ltrs	12.1/55	12.1/55	12.1/55	12.1/55	12.1/55	12.1/55
Official fuel consumption manual gearbox, mpg/ltr per 100 km ⁽⁰⁵⁾						
Urban	33.6/8.4	32.5/8.7	28.0/10.1	25.0/11.3	51.4/5.5	43.5/6.5
Extra-urban	53.3/5.3	52.3/5.4	47.9/5.9	45.6/6.2	70.6/4.0	65.7/4.3
Combined	44.1/6.4	42.8/6.6	38.2/7.4	34.9/8.1	62.8/4.5	55.4/5.1
Official fuel consumption, automatic DSG gearbox, mpg/ltr per 100 km ⁽⁰⁵⁾						
Urban	–	35.3/8.0	28.2/10.0	25.9/10.9	47.9/5.9	39.8/7.1
Extra-urban	–	52.3/5.4	47.1/6.0	44.8/6.3	62.8/4.5	61.4/4.6
Combined	–	44.8/6.3	37.7/7.5	35.3/8.0	57.6/4.9	51.4/5.5
Official CO ₂ emission, g/km, Manual gearbox ⁽⁰⁶⁾	149	154	172	189	118	134
Automatic DSG gearbox ⁽⁰⁶⁾	–	147	174	187	129	144
Emission class	EURO 5	EURO 5	EURO 5	EURO 5	EURO 5	EURO 5
Noise, dB						
Manual gearbox	72.0	74.0	75.0	75.0	71.0	72.0
Automatic DSG gearbox	–	71.0	74.0	73.0	69.0	68.0
Maximum luggage capacity ⁽⁰⁷⁾						
With rear seat upright	312	312	312	312	312	312

[†] Please note, as of December 2009 the insurance industry switched from the current rating system of groups 1 - 20 to a new 1 - 50 insurance scale.

Technology

Technical specification notes

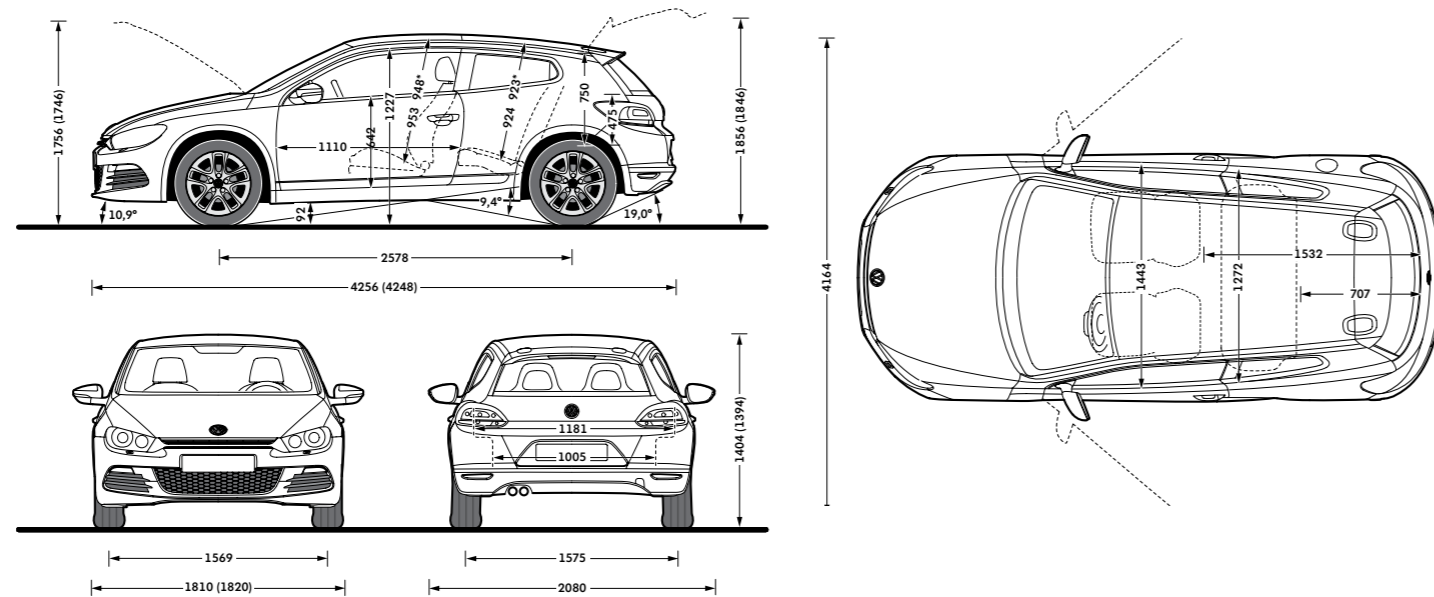
- The maximum power output figures are quoted in PS (or Pferdestärke, which is the metric equivalent of horsepower). To convert from metric to imperial horsepower, divide the PS figure by 1.0139.
- Figures are calculated in accordance with manufacturer's criteria. The individual unladen weight depends on the specification of the vehicle, this then reduces the possible payload accordingly.
The unladen weight and payload both include the fuel tank 90% full, driver (68 kg) and luggage (7 kg) in line with EU directive 95/48.
- With increasing altitude the engine performance diminishes. From 1,000 m above sea level and for every 1,000 m thereafter 10% of the vehicle/trailer weight (trailer weight + gross vehicle weight) must be deducted.
- The use of RME and FAME (bio diesel) is not possible.
- Official fuel consumption according to EU Directive 99/94. The consumption calculation according to 1999/100/EC is based on the actual unladen weight of the vehicle. Additional specifications can lead to a higher weight class and hence to consumption figures of this higher weight class. The driving style, road and traffic conditions, environmental influences and vehicle condition can in practice lead to consumption figures, which may differ from those calculated with this standard.
- The weight of a vehicle will influence the level of CO₂ emission it produces; as a result, vehicles with higher levels of specification and factory-fitted options may emit higher levels of CO₂.
- VDA measuring method using 200 x 100 x 50 mm blocks.

Exterior dimensions	Scirocco, GT	R
Length, mm	4256	4248
Width – including door mirrors, mm	2080	2080
Width – excluding door mirrors, mm	1810	1820
Width – opened doors, mm	4164	4164
Height, mm	1404	1394
Height – opened bonnet/floor, mm	1756	1746
Height – opened tailgate/floor, mm	1856	1846
Wheelbase, mm	2578	2578
Turning circle, mm	11000	11000

Interior dimensions	Scirocco, GT	R
Effective headroom – front, mm	953	953
(with sunroof)	(948)	(948)
Effective headroom – rear, mm	924	924
(with sunroof)	(923)	(923)

All figures in millimetres. R figures in brackets.

* Dimensions with optional sunroof fitted.



Engines

Front transverse-installed engine

1.4 litre/122 PS ⁽⁰¹⁾ (90 kW) petrol engine: CAXA TSI engine with homogeneous mode (Lambda 1), stratified high-pressure start, double injection catalytic converter heating, turbocharger with waste gate, air-to-liquid charge-air cooling, maintenance-free timing chain, plastic intake manifold with integrated intercooler, continuous inlet camshaft timing adjustment, grey cast iron cylinder block, steel crankshaft, duo-centric oil pump, dual-circuit cooling system. Fuel system regulated according to requirements using high-pressure fuel pump with integrated pressure limiting valve

1.4 litre/160 PS ⁽⁰¹⁾ (118 kW) petrol engine: EU5 compliant four cylinder in-line engine with homogeneous mode (Lambda 1), stratified high-pressure start, turbocharger with waste gate, additional mechanical supercharger, intercooler and dual-circuit cooling system. Fuel system regulated according to requirements using high pressure fuel pump with integrated pressure limiting valve. Intake manifold flap change-over omitted, regulated duo-centric oil pump, metal cartridge oil filter and three way catalytic converter

2.0 litre/210 PS ⁽⁰¹⁾ (155 kW) petrol engine: four cylinder in-line engine, aluminium cylinder head, four valves per cylinder with roller rocker finger valve drive, electronic direct injection, variable inlet valve timing, programmed ignition with cylinder-selective anti-knock control, four single spark ignition coils, longlife spark plugs, exhaust gas turbocharger, three-way close-coupled pre-catalyst and underbody catalyst, lambda control

2.0 litre/265 PS ⁽⁰¹⁾ (195 kW) petrol engine: four cylinder in-line engine, aluminium cylinder head, four valves per cylinder with roller rocker finger valve drive, electronic direct injection, variable inlet valve timing, programmed ignition with cylinder-selective anti-knock control, four single spark ignition coils, longlife spark plugs, exhaust gas turbocharger, three-way close-coupled pre-catalyst and underbody catalyst, lambda control

2.0 litre/140 PS ⁽⁰¹⁾ (103 kW) common rail diesel engine: EU5 emissions standard, four cylinder in-line engine, four valves per cylinder, aluminium-silicon alloy cylinder head, reduced piston crown volume (improves swirl generation in the cylinder), toothed backlash compensator, intake manifold with electric continual tumble flap control, electronically controlled common rail direct injection fuel system with Bosch high pressure pump (up to 1800 bar) and 8-hole piezo injector units, pre-supply electronic fuel pump, oil cooler, intercooler, low temperature exhaust gas recirculation, additional coolant pump, turbocharger with variable turbine geometry, catalytic converter and Diesel Particulate Filter (DPF)

Engines (continued)

2.0 litre/170 PS ⁽⁰¹⁾ (125 kW) common rail diesel engine: EU5 emissions standard, four cylinder in-line engine, four valves per cylinder, aluminium-silicon alloy cylinder head, reduced piston crown volume (improves swirl generation in the cylinder), toothed backlash compensator, intake manifold with electric continual tumble flap control, electronically controlled common rail direct injection fuel system with Bosch high pressure pump (up to 1800 bar) and 8-hole piezo injector units, pre-supply electronic fuel pump, oil cooler, intercooler, low temperature exhaust gas recirculation, additional coolant pump, turbocharger with variable turbine geometry, catalytic converter and Diesel Particulate Filter (DPF)

Transmission

- Front wheel drive through asbestos-free single-plate dry clutch. Hydraulic clutch-mechanism. Six speed manual or six or seven speed automatic DSG gearbox with double joint half axles (wet clutch on six speed DSG models)
- Six speed manual: 1.4 litre TSI 122 PS, 1.4 litre TSI 160 PS, 2.0 litre TSI 210 PS, 2.0 litre TSI 265 PS, 2.0 litre TDI 140 PS, 2.0 litre TDI 170 PS
- Six speed automatic DSG: 2.0 litre TSI 210 PS, 2.0 litre TSI 265 PS, 2.0 litre TDI 140 PS, 2.0 litre TDI 170 PS
- Seven speed automatic DSG: 1.4 litre TSI 160 PS

Running gear

- Electronic Stabilisation Programme (ESP) including Electronic Differential Lock (EDL), Traction Control (ASR) and Countersteer Support
- Front and rear anti-roll bar
- Front suspension through coil springs with telescopic shock absorbers, all elements integrated in chassis legs
- Rear suspension with gas pressure shock absorbers and separate springs
- Wheel control: front through chassis legs and (lower) triangular wishbones (directionally stabilising steering roll radius)
- Wheel control: rear through four-link suspension with independent wheel suspension
- XDS electronic differential lock (R only)

Steering

- Electro-mechanical steering rack
- Collapsible, height and lengthways adjustable safety steering column

Brakes

- Electronically controlled Anti-lock Braking System (ABS) with Electronic Brake-pressure Distribution (EBD)
- Diagonal twin-circuit brake system with front and rear disc brakes (front ventilated)
- Asbestos-free brake pads
- Hydraulic Brake Assist (HBA)

Volkswagen service

The Volkswagen Warranty

Three-year Warranty

All Volkswagen Sciroccos come with a three-year/60,000 miles warranty, which protects your car against the failure of most mechanical and electrical components due to manufacturing defects. This comprises a two-year manufacturer's warranty with unlimited mileage plus a further one-year/60,000 miles (whichever is soonest) Retailer Warranty. Should the mileage exceed 60,000 miles within the first two years, the manufacturer's two-year warranty will still be valid. If an additional warranty for subsequent years or higher mileage is desired, it may be purchased from an authorised Volkswagen retailer or repairer; however, this additional warranty must be purchased before the mileage reaches 60,000*. Full details of the three-year warranty are available from your authorised Volkswagen retailer or repairer.

* All warranty work must be completed by an authorised Volkswagen retailer or repairer.

Three-year Paint Warranty

The paintwork of the Scirocco is covered against manufacturing defects for a period of three years. Naturally, the Scirocco must be cared for in compliance with the operating instructions which will be found in your vehicle handbook. Please consult your authorised Volkswagen retailer or repairer for full warranty details.

12-year Body Protection Warranty

The internal body sections and panels of the Scirocco are covered against rusting through from the inside for 12 years. Naturally, the Scirocco must be cared for in compliance with the operating instructions. Please consult your authorised Volkswagen retailer or repairer for full warranty details.

Approved Accessories

A comprehensive range of accessories from alloy wheels to carpet mats is available to complement the factory-fitted option list. Volkswagen approved accessories purchased from and fitted by your authorised Volkswagen retailer at the point of vehicle sale will also benefit from the three-year vehicle warranty.

Extended Warranty

You may purchase additional protection from your authorised Volkswagen retailer or repairer, or contact 0870 9000 115.

Service Intervals

Volkswagen are pleased to offer you a choice on how your Scirocco is serviced. The appropriate selection is entirely dependent on how the car is likely to be driven and its general use. To help you identify which type of service would be most suitable, please refer to the following guide.

The Time and Distance Service is recommended for vehicles that will cover less than 10,000 miles in 12 months and if the vehicle is likely to be used in the following way:

- Predominantly urban driving, short journeys with frequent cold starts.
- Activities regularly producing high engine loading, e.g. frequent hill climbs, driving with vehicle fully loaded and towing.
- Uneconomical driving style using high rpms with heavy acceleration and heavy braking.

The service intervals for the Time and Distance Service are as follows:

- Oil change service Every 10,000 miles/1 year (whichever is soonest).
- Interval service Every 20,000 miles/2 years (whichever is soonest).
- Inspection service Every 40,000 miles/3 years (whichever is soonest).

The LongLife Service is recommended for vehicles with a daily mileage of more than 25 miles where the vehicle is driven regularly mainly on longer distance journeys. The vehicle is driven mainly at a constant speed with minimum vehicle and engine loading, minimal towing and driven in an economical manner.

With the LongLife Service the vehicle can cover anywhere between 10,000[†] and a maximum of 18,000[†] miles or 24 months (whichever is soonest) between oil changes. Inspection service is typically in the third year of ownership and thereafter every second year, for vehicles with an approximate annual mileage of 10,000 miles.

[†] Please note that mileages are approximate as the service indicator system uses kilometres as the distance measurement.

Please consult your authorised Volkswagen retailer or repairer for advice and full details.

Volkswagen Insurance[‡]

We want you to start enjoying your new car from day one and thanks to Volkswagen Insurance complimentary seven day cover, you can. Call free on 0800 316 7892 (lines are open Monday to Friday 8 am – 9 pm and Saturday 9 am – 5 pm), provide a few details and a cover note will be sent to your retailer. They will then tax your car and you can drive it away.

Visit www.insurewithvolkswagen.co.uk for details of the full range of insurance products available.

Here you can also get a quote for your annual car insurance and buy it online too. All of our insurance products are designed to ease the pain of making a claim.

‡ Volkswagen Insurance is a trading name of Volkswagen Insurance Service (Great Britain) Limited, an appointed representative of Volkswagen Financial Services (UK) Limited, Brunswick Court, Yeomans Drive, Blakelands, Milton Keynes MK14 5LR. Registered in England number 2835230. Volkswagen Insurance is sold, underwritten and administered by Allianz Insurance plc registered in England number 84638. Registered office 57 Ladymead, Guildford, Surrey GU1 1DB. Volkswagen Financial Services (UK) Limited and Allianz Insurance plc are authorised and regulated by the Financial Services Authority. Volkswagen Financial Services (UK) Limited and Allianz Insurance plc are not part of the same corporate group.

Volkswagen Finance[±]

Volkswagen Finance specialises in providing funding solutions for Volkswagen drivers. Whether your Volkswagen is for private or business use, you can choose from a range of funding options.

- Solutions – a personal contract plan
- Hire purchase
- Lease purchase
- Finance lease
- Contract hire

With all Volkswagen Finance products you can choose a fixed-cost maintenance plan to help you budget for your servicing and maintenance costs.

No matter what finance product you choose, your local Volkswagen retailer will be able to provide you with a personalised quote that could meet your budget and vehicle needs.

± Volkswagen Finance is a trading name of Volkswagen Financial Services (UK) Limited. An offer of finance depends on certain conditions. Available to people over 18 in the UK only.

Volkswagen Roadside Assistance

Every new car is registered for Volkswagen Roadside Assistance for one year. This provides vehicle home and roadside recovery in the unlikely event of a breakdown in the UK and Europe (subject to conditions). Volkswagen Roadside Assistance can also be purchased for subsequent years. For full details, please contact your authorised Volkswagen retailer or repairer.

Tax Free Sales

For full details, please contact your authorised Volkswagen retailer.

CO₂ Emissions.

Increased weight of a vehicle, including higher trim levels and the addition of options will have a detrimental influence on the level of fuel consumption and CO₂ emissions produced.

The CO₂ and fuel consumption figures are obtained from tests on a representative vehicle of the type, conducted and approved in accordance with Council Directive 80/1268/EEC as amended by Directive 1999/100/EC (or later) on the approximation of the laws of the member states relating to the carbon dioxide emissions and the fuel consumption of motor vehicles.

Please Note:

Some illustrations in this brochure do not necessarily reflect UK specifications and may not be available. In particular, controls and some items of equipment are positioned differently for the UK.

The specifications contained in this brochure are for information purposes only and are subject to change. If you require any specific feature, you must consult your authorised Volkswagen retailer who is regularly updated with any change in specification. Please check model availability and full specification details with your authorised Volkswagen retailer prior to ordering.

Note: We would like to advise you that telephone calls to Volkswagen Customer Care may be monitored and recorded as part of our training and quality assurance processes. All our monitoring and recording processes meet Ofcom regulations.

The Scirocco

Volkswagen Information Service. Telephone 0800 333 666

Internet: www.volkswagen.co.uk

© Volkswagen Group United Kingdom Limited 2011.

Issue: 1 August 2011. Printed in UK.

PVW287NSF