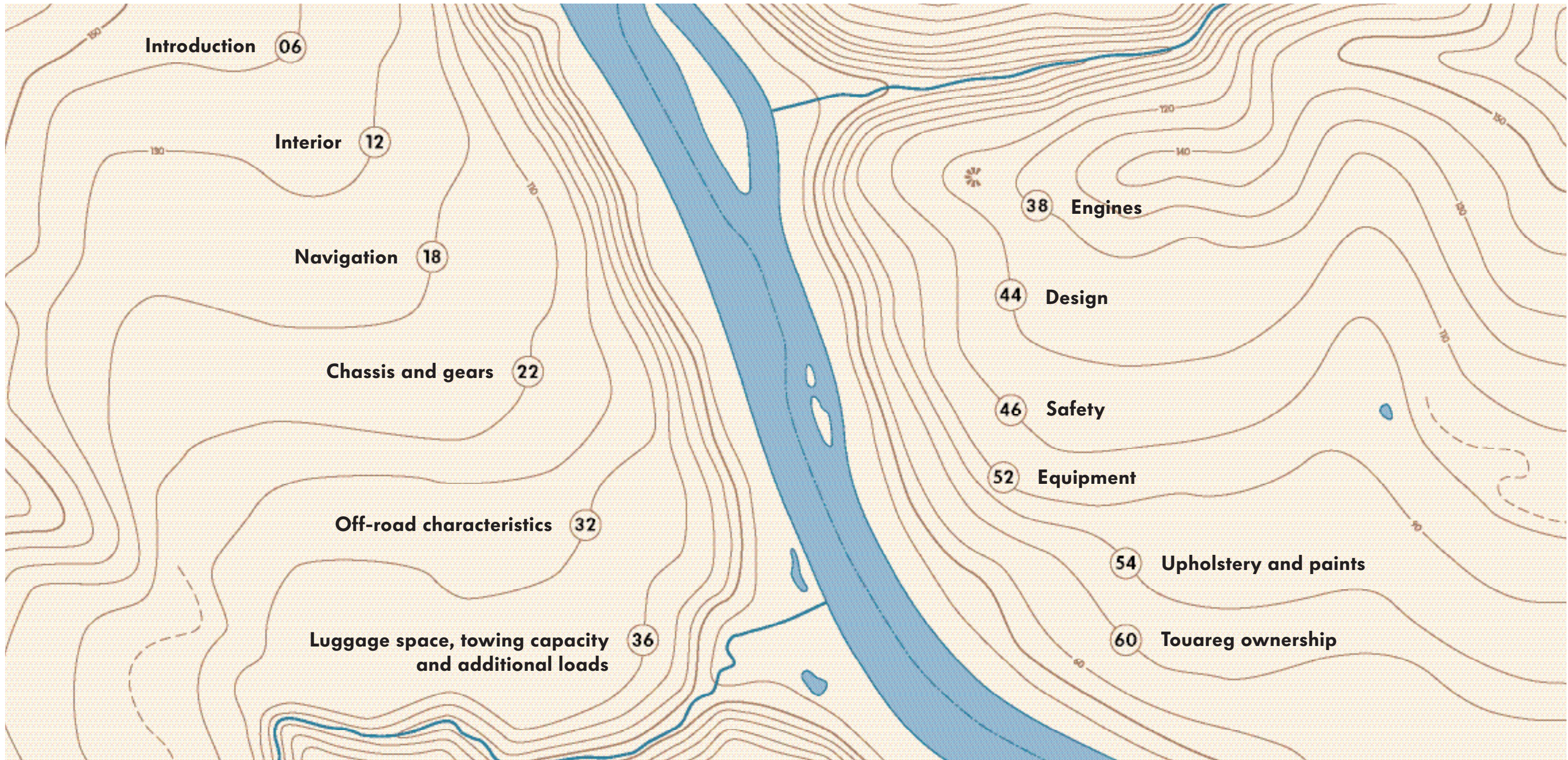




THE TOUAREG.



Introduction 06

Interior 12

Navigation 18

Chassis and gears 22

Off-road characteristics 32

**Luggage space, towing capacity
and additional loads** 36

38 Engines

44 Design

46 Safety

52 Equipment

54 Upholstery and paints

60 Touareg ownership



Model shown is V10 TDI.



WITH 149 MILLION SQUARE KILOMETRES
ON THE WORLD'S SURFACE, DRIVING
SHOULD BE AN ADVENTURE.

To the individual,
the world is a vast place,
an expanse of radically
different environments that
bring unique challenges on
every journey. So whether
it's city driving, motorway
cruising or off-roading you

are faced with, you can rely on the Volkswagen Touareg
to deliver great performance. Combining luxury saloon car
comfort with driving exhilaration, and all-terrain capability
with stylish design, the Touareg will bring a smile to your face
wherever you venture.

FROM COUNTRY LANES
TO MOTORWAYS, 45°
INCLINES TO SHALLOW
RIVERS. THE TOUAREG
REVELS IN THEM ALL.



Model shown is V6.

BENEATH TRADITIONAL
QUALITY CRAFTSMANSHIP
BEATS STATE OF THE ART
COMPUTER ENGINEERING.

Model shown is V10 TDI.



Looks can be deceptive and the Touareg is living proof of this. Powerful and distinctive from the outside, the Touareg provides a calm and tranquil inner cabin, courtesy of exceptional build quality and the highest level of equipment. For example, the 2Zone electronic climate control allows the driver and passengers to control the temperature in their own individual spaces. Go for the optional 4Zone electronic climate control and each quarter of the cabin can be adjusted to within 4°C of the others. Position yourself in the firm and perfectly contoured driving seat and you'll enjoy an unsurpassed view of the road. Run your hands around the multifunction steering wheel and the Touareg's quality is assured, whilst convenient steering wheel controls mean you can adjust the cruise control, multifunction computer and the 'Delta' CD radio with 10 speakers.

In addition, a host of optional equipment is also available to help tailor your Touareg to your personal needs. Such as the convenience of 12-way electrically-adjustable seats, standard on V8 and V10 TDI models, or the flexibility of steering wheel

ALL THE COMFORTS OF
MODERN DAY DRIVING.



mounted tiptronic gear selection, optional on all automatic models. To remove some of the stress when parking in confined spaces, why not choose the parking sensor? This ingenious system activates automatically to emit audible and visual warnings of objects and their distances.



When a vehicle displays such a wealth of technical features and functions as the Touareg, it's important that their operation is user-friendly. So, when you're comfortably positioned in the driver's seat, you'll appreciate immediately the Touareg's ergonomically designed interior. All switches follow a logical layout; for example, on automatic models the tiptronic function can be operated by optional 'racing style' paddle switches located behind the multifunction steering wheel. Positioned between the main dials sits a multifunction computer, displaying information on a 3" monochrome screen, or 5" colour screen on the V10 TDI. This includes useful data for average fuel consumption, distance travelled and outside temperature.

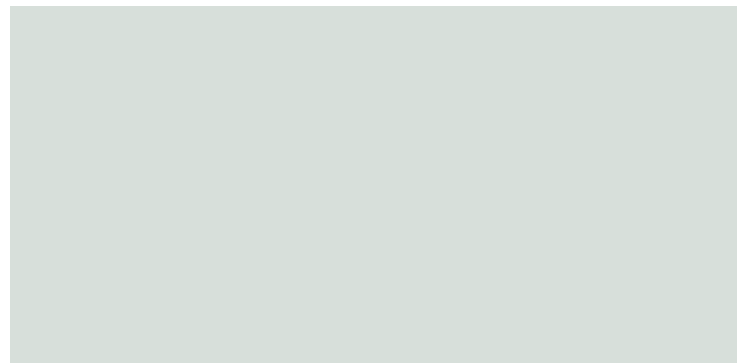
Comfort features are also a major benefit in the Touareg and, as you'd expect from Volkswagen, attention to detail is second to none. A good example of this philosophy is the air sensor in the Climatronic systems, which assesses the quality of air and automatically switches to air re-circulation in certain situations, such as passing through a tunnel.



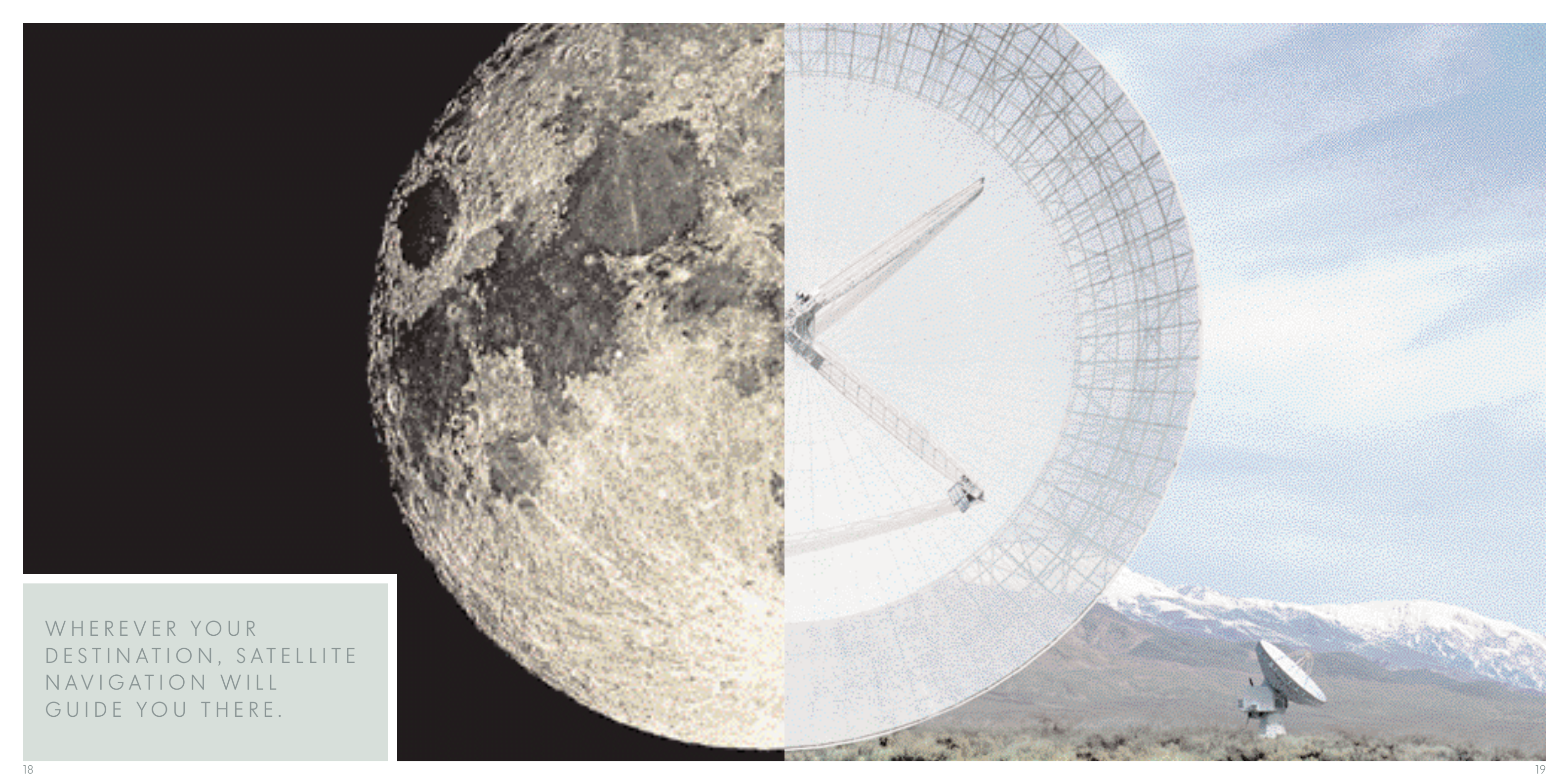
The ample sized seats are a fine example of the high quality design and craftsmanship throughout the Touareg. Ergonomically designed, they provide firm lateral support and great comfort on even the longest journeys. In order to achieve the ideal seating position, all models benefit from driver and front passenger seat height adjustment.

For the ultimate flexibility, the V8 and V10 TDI enjoy 12-way electrically-adjustable front seats with lumbar support and heating. In-car entertainment is supplied by a 'Delta' radio system with single CD player and 10 speakers. Of particular note are the four separate aeras embedded in the side windows ensuring a clear reception without spoiling the clean lines of the Touareg's exterior.

On the Touareg V10 TDI, the audio system is boosted by the 'Audio system 8/11'. This outstanding package benefits from an eight channel audio amplifier and 400 watt output via 11 speakers, creating clear and powerful acoustics. The latest additions to the Touareg range, the SE 2.5 TDI and the SE Sport 2.5 TDI, feature a six CD autochanger and sophisticated navigation/radio system. This state of the art DVD-ROM based system is easily operated through a clear menu guide and is available as an option on all other Touareg models. Rear seat entertainment can be provided by the optional DVD multimedia system mounted in the vehicle's roof lining. This system features a single foldaway screen, infrared headphones and remote control operation.



Interior shown is V8 with optional Continuous Damping Control (CDC).



WHEREVER YOUR
DESTINATION, SATELLITE
NAVIGATION WILL
GUIDE YOU THERE.



WHETHER YOU ARE HEADING FOR A CITY CENTRE OR RURAL RETREAT, LET SATELLITE NAVIGATION CHOOSE THE BEST ROUTE.

Wherever you may venture with your Touareg, finding your way has never been easier. Whether it's a first-class restaurant in the heart of a city or a fishing hideaway in the countryside, the satellite navigation is there to guide you to your destination. Simply enter the town and street, and the state of the art navigation system will find the shortest route. There's never been a better reason to head off the beaten track.

Operating the satellite navigation system is simplicity itself, as you'll appreciate the very first time you call upon its assistance. Details of your current position and the directions you'll need to follow will be clearly displayed on the navigation system's 6½" colour screen, positioned

on the centre console. Navigation information is also displayed on the 3" monochrome screen (or 5" colour screen) positioned in the dashboard. Whichever screen you are using, you can view relevant information about your journey, such as distance covered and your approximate time of arrival. To ensure you keep your eyes on the road ahead, the navigation system can also talk you through your route with precise audible instructions. Driving doesn't come much easier.

The satellite navigation system is standard on Touareg SE 2.5 TDI and SE Sport 2.5 TDI models and is available as an option on all other models. Please note that a six disc, boot-mounted CD autochanger is included in conjunction with satellite navigation systems.

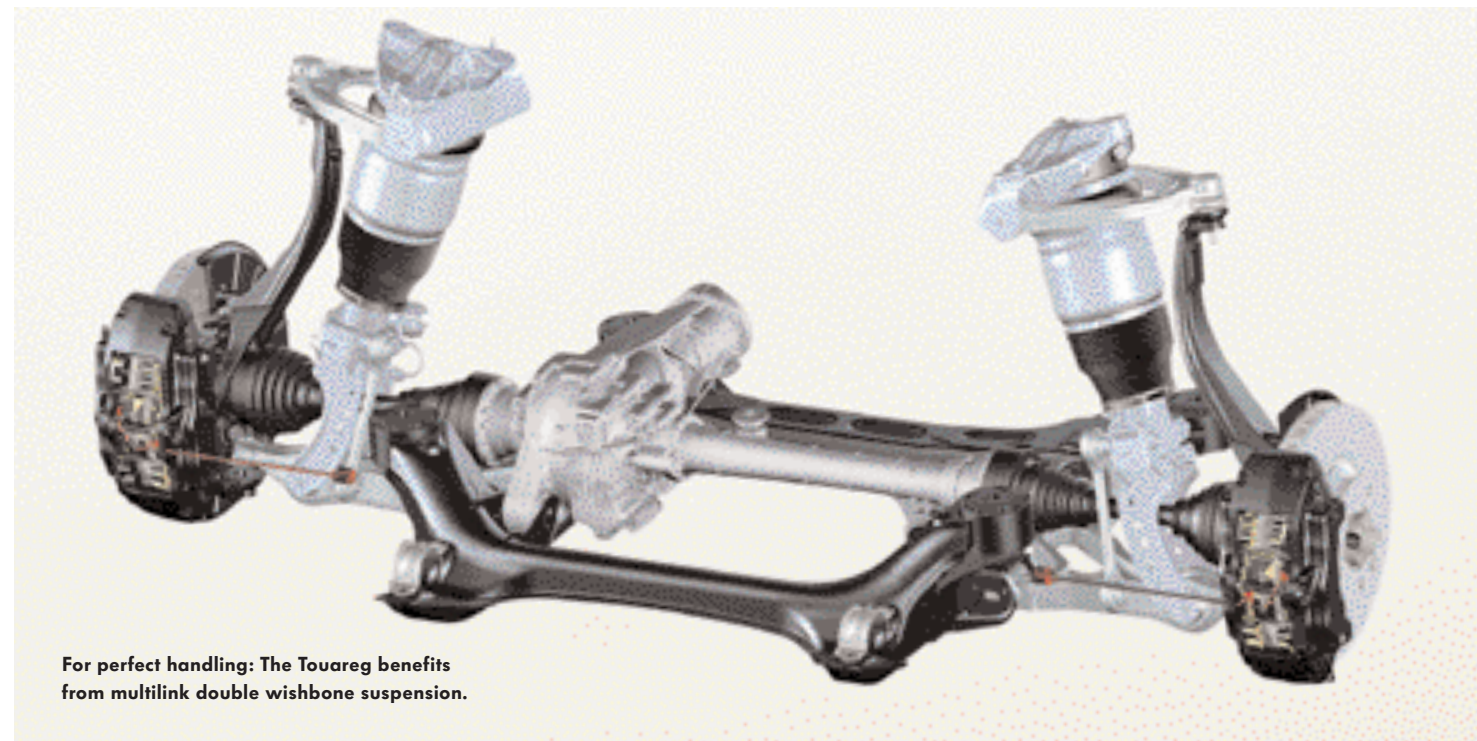
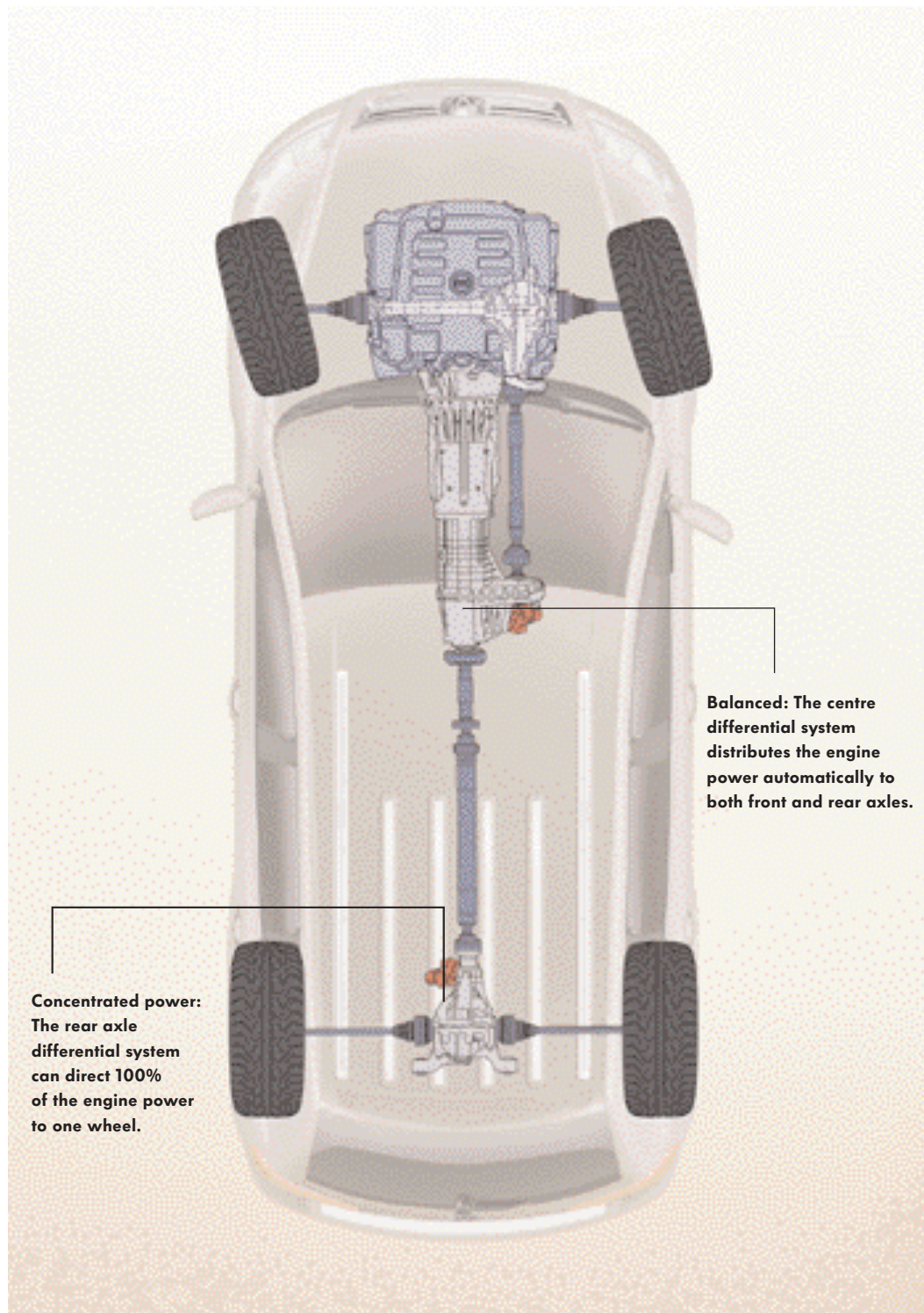


BROADEN YOUR
HORIZONS WITH
FOUR WHEEL DRIVE.





CRUISING DOWN THE MOTORWAY, CROSSING A FIELD, TWISTING ALONG COUNTRY LANES OR FORDING A RIVER, TOUAREG TECHNOLOGY ADAPTS TO THE SITUATION EFFORTLESSLY.



There's an easy way to discover the difference between the new Touareg and a conventional 4x4 – with your fingertips. A simple turn of the twin controls is all it takes to adjust the gear ratio, engage the differential locks and adjust the air suspension settings. In addition, the damping control lets you select between 'sport', 'comfort' or 'auto' for the most efficient handling and maximum comfort, whatever the driving environment (standard on V10 TDI, optional on all other models). The axle construction employs multilink double wishbone suspension, both front and rear, assuring you of a smooth and precise drive.

The chassis is complemented perfectly by two ultra-modern transmissions: a six speed manual gearbox or six speed automatic tiptronic – both of a weight-saving design and 'filled for life' with oil so that routine servicing is not needed.

With automatic transmission, shift commands are supplied electronically via the Dynamic Shift Programme (DSP). This modifies the shift points to match your individual driving style, assessing several criteria, including accelerator and brake

movement, trailer weight, uphill or downhill gradients and gear shift frequency. Armed with this information, the DSP calculates the most appropriate gear shift pattern from 'sport' to 'auto' mode. Alternatively, should you prefer more involvement, you can easily override gear changes manually through the tiptronic gear lever or optional 'racing style' paddle switches, located behind the multifunction steering wheel.

Off-road, the Touareg is in its element, due largely to its advanced, permanent four wheel drive system. In normal situations, the torque is split 50:50 between the front and rear wheels – but, remarkably, the Touareg will automatically direct 100% of the torque to a single wheel should the conditions beneath prove more than a little demanding.

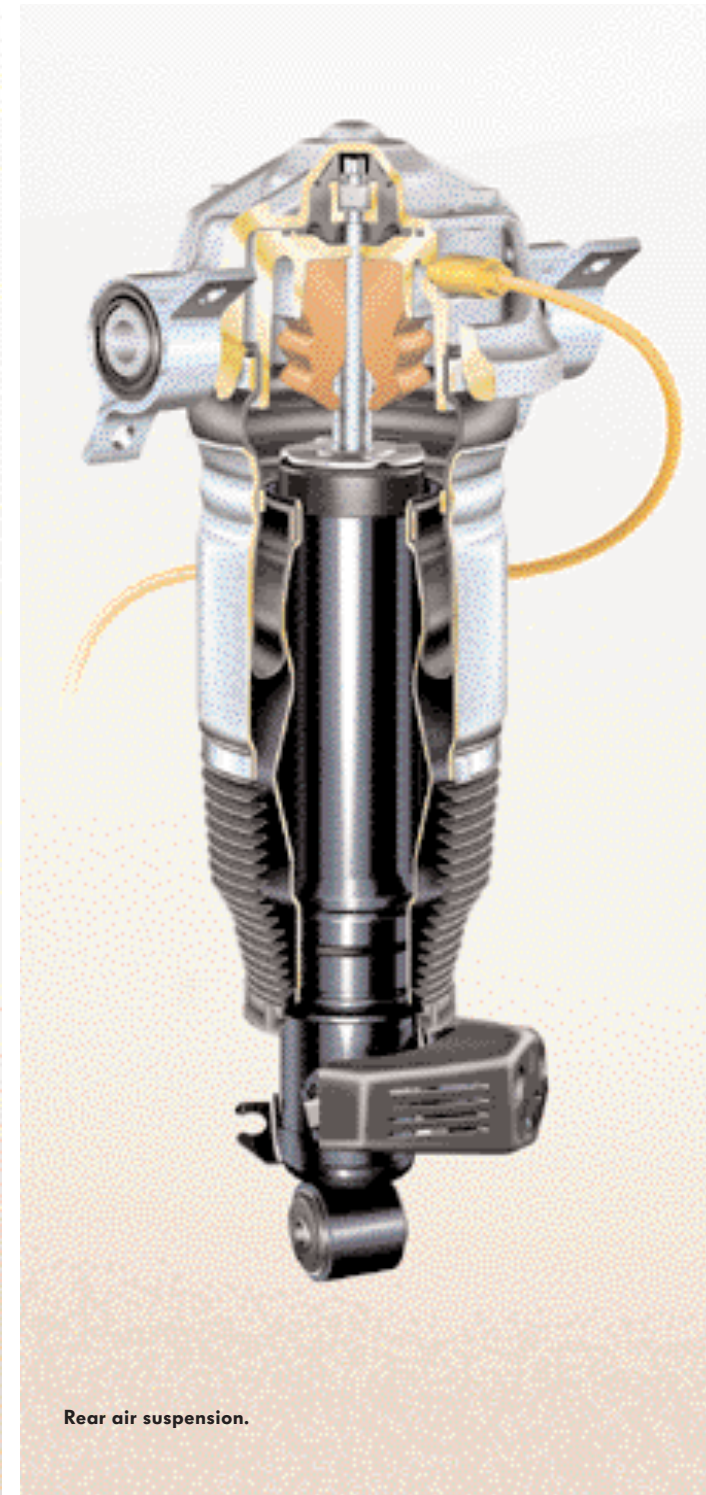
As you would expect of a true off-road performer, you can always choose to lock manually either the centre or optional rear differentials for absolute predictability. In combination with the low range gearing, this makes the Touareg a formidable proposition for extreme off-roading.

ADAPT TO CHANGING ENVIRONMENTS WITH THE GREATEST OF EASE.

Air suspension is standard on V10 TDI (optional on all other models) and features automatic self-levelling and variable ride height. Continuous Damping Control (CDC) takes effect according to road speed and driving conditions, using electronic control to minimise body pitch and roll for greater stability and comfort.

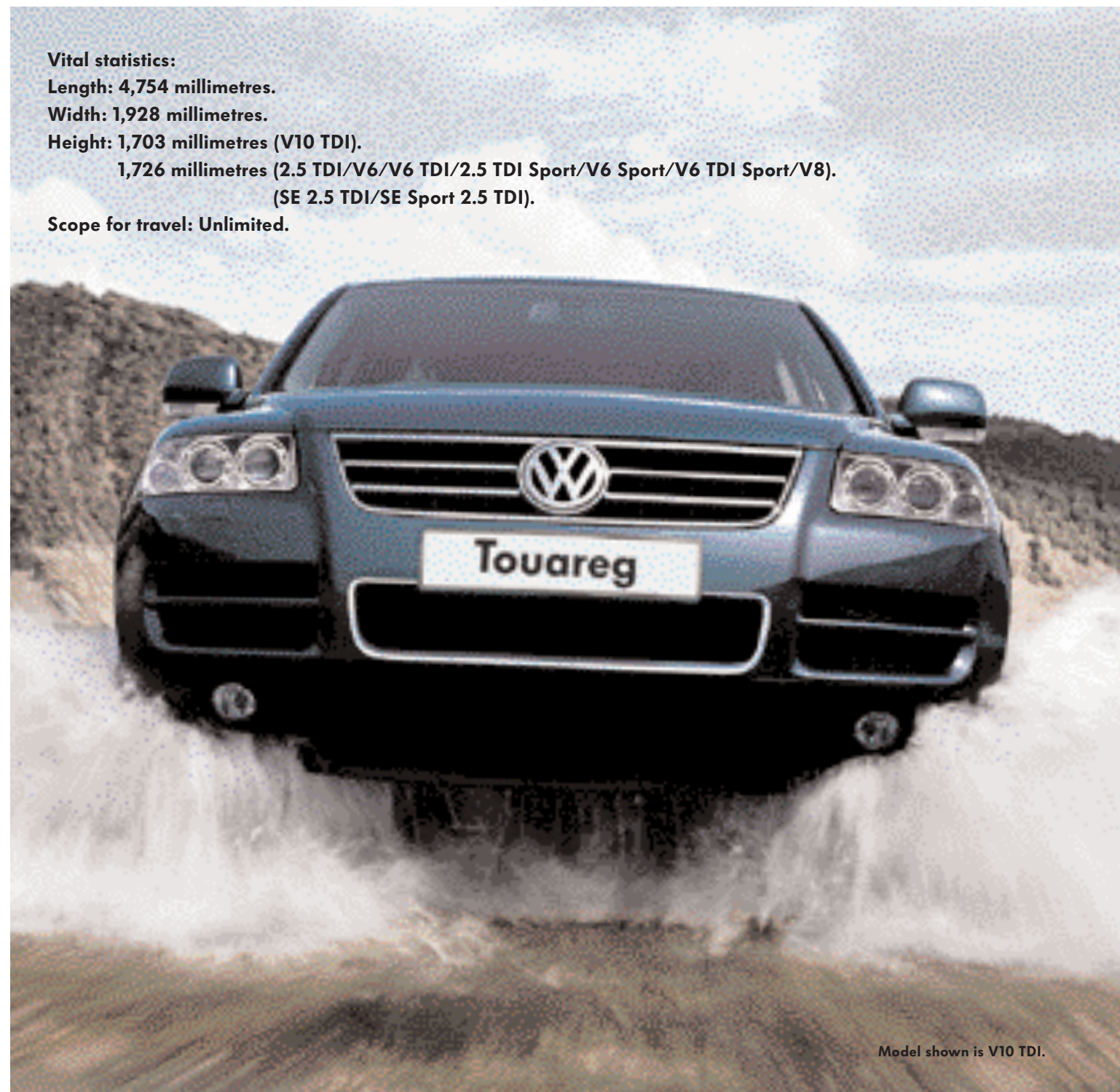


- 01 Adjusting the air suspension to its lowest setting means that loading and unloading can be done with ease.
- 02 This setting provides a comfortable ride, ideal for motorway cruising.
- 03 At maximum height the Touareg dominates off-road.





SMALL ADJUSTMENTS THAT
MAKE A BIG DIFFERENCE.



Vital statistics:

Length: 4,754 millimetres.

Width: 1,928 millimetres.

Height: 1,703 millimetres (V10 TDI).

1,726 millimetres (2.5 TDI/V6/V6 TDI/2.5 TDI Sport/V6 Sport/V6 TDI Sport/V8).

(SE 2.5 TDI/SE Sport 2.5 TDI).

Scope for travel: Unlimited.

TOUAREG: UNLIMITED. AN ON- AND OFF-ROAD EXPERIENCE FOR TOUAREG OWNERS.

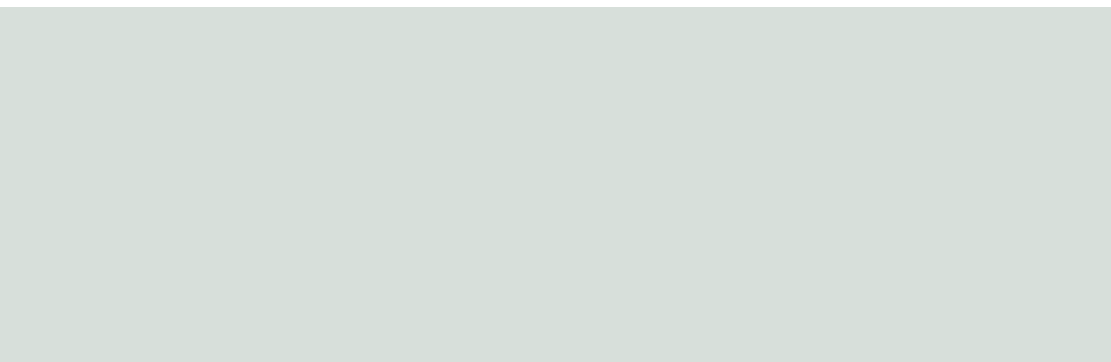
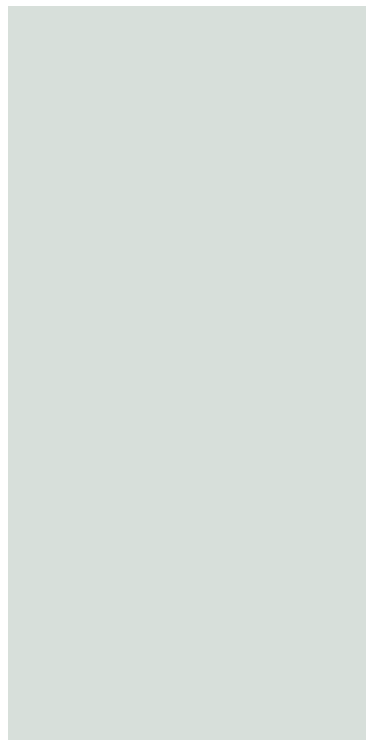
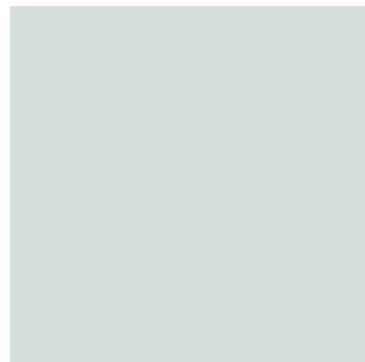
The Touareg brings endless driving opportunities, taking you places you've never been before. It's such great entertainment, we've developed a driving experience programme so that you can familiarise yourself with its true potential. Simply describing the capabilities of this 4x4 does not do justice to the Touareg experience, so this exciting day incorporates two distinct encounters: off-road and track. Whilst the off-road section will have you tackling sand, rocks and steep inclines (and encouraging you to drive responsibly too), the track will demonstrate the Touareg's on-road handling and dynamics. 'Touareg: Unlimited' is designed to be enjoyable and fun, with a serious side. It uses standard cars, and is designed to suit enthusiasts and non-enthusiasts alike.

To ensure you gain maximum benefit, the training will be held in small groups and you'll also have a choice of venues and dates for your convenience.



ENJOY THE ULTIMATE 4X4 FLEXIBILITY, WHEREVER YOU VENTURE.

Few vehicles offer the flexibility of the new Touareg – and the predominant reason for this exceptional adaptability is the design of its chassis and suspension. The Touareg has one of the longest wheelbases to be found on this type of vehicle, which ensures a roomy interior as well as dynamic performance. Its running gear has been designed with independent suspension at all wheels, and there are double wishbones, front and rear, complemented by aluminium control arms at the top and steel triangulated wishbones below. Compared with other designs, this axle layout is capable of absorbing very high loads, which is ideal for a 4x4. It also helps improve roadholding when high levels of lateral acceleration and cornering speeds come into play. In addition, Continuous Damping Control (CDC) air suspension (standard on V10 TDI, optional on other models) is automatically self-levelling, and provides variable ride height depending upon road speed and driving conditions.



Model shown is V10 TDI.



01 Approach and departure angles: 28°.
The height of the bumper has exceptional clearance allowing steep angles to be easily overcome. With air suspension, the clearance increases to 33.2° front and 33.6° rear.

Whenever you encounter harsh terrain, you'll certainly appreciate the Touareg's outstanding design and engineering. Features like four wheel drive, an electronically controlled centre differential, low range gear and a maximum ground clearance of 237 mm (300 mm with air suspension) all help to create a 4x4 with outstanding ability. What's more, these features complement one another perfectly. For example, the low range gear is activated by the suspension switch, which drops the first gear ratio by an additional 2.66:1, so that very high torque reaches the driven wheels for maximum traction.

02 Breakover angle: 27°.
Thanks to the high ramp angle, the Touareg is an accomplished off-roader on the most uneven surfaces. On models without air suspension, the ramp angle is lower at 22.1°.

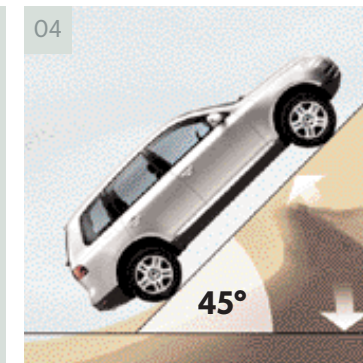


STEEP INCLINES AND FLOWING WATER PRESENT NO OBSTACLE. SO WHY NOT VENTURE OFF THE BEATEN TRACK?



03 Side slope angle: 35° (stationary 45°).
Even driving at a 35° angle the Touareg retains ideal traction. This allows reversing and turning on practically any incline.

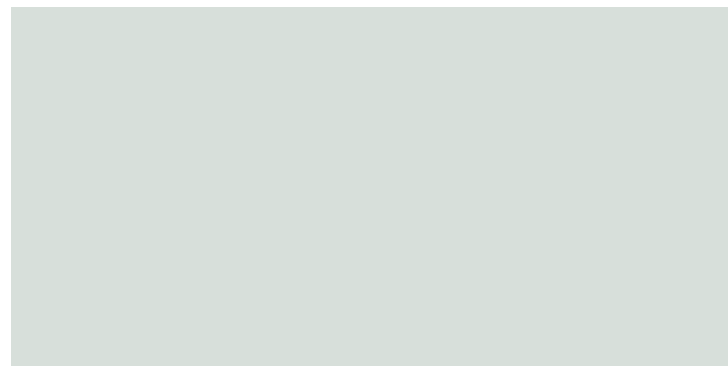
03 Side slope angle: 35° (stationary 45°).
Even driving at a 35° angle the Touareg retains ideal traction. This allows reversing and turning on practically any incline.



04 Climbing capability: 45°.
The Touareg can handle extreme inclines allowing you access to places you've never ventured before.



05 Fording depth: 580 mm.
Even at depths of 580 mm the engine and interior are protected from water. On models without air suspension, the fording depth is reduced to 500 mm.



FIRST-CLASS COMFORT FOR FIVE PEOPLE PLUS LUGGAGE. AND A TOWING CAPACITY THAT'S FIRST CLASS TOO.

The Touareg is immensely practical. With the rear seats upright, it has an impressive 555 litres of luggage space, but drop down the rear seats and that almost trebles to a spacious 1,570 litres. If that's not sufficient, you can always add a roof luggage carrier from the Volkswagen accessories range, designed specifically for the Touareg. You needn't worry about the increased weight, either. The Touareg can safely carry a payload of up to 656 kg, and if you are driving a model with air suspension (standard on V10 TDI), it will automatically balance to the most appropriate setting – and lower to a ground clearance level of 160 mm for maximum convenience when loading and unloading. If further proof were needed of the Touareg's capability, consider its towing capacity – up to a massive 3.0 tonnes.



MOUNTAIN PASSES OR MOTORWAYS.
POWER AND FLEXIBILITY ARE KEY.



Cruising down a motorway or going off-road, it's reassuring to know you have plenty of power in reserve. With the new Touareg you have a choice of two petrol engines and three class leading diesel engines, all sharing a common goal – using powerful torque to achieve acceleration and performance throughout the rev range. The V10 TDI epitomises the success of the modern day diesel. Not only is it efficient, powerful and clean, it's also the world's most powerful production passenger diesel engine.

THE 2.5 TDI.

Smooth and efficient, the 2.5 TDI 174 PS delivers everything you would expect from a Volkswagen diesel: 0-62 mph in 12.4 seconds*, a maximum torque of 400 Nm and it can accelerate from 30 to 70 mph in under 12 seconds.

THE V6.

In any situation, efficient performance is provided by this 241 PS engine. Developing peak torque of 310 Nm at 3,200 rpm, it can accelerate from standstill to 62 mph in 9.8 seconds*.

THE V6 TDI.

The 3.0 V6 TDI also combines power with performance by developing 500 Nm of torque at just 1,750 rpm with an equally impressive acceleration of 0-62 mph in 9.9 seconds*.

THE V8.

Combining saloon car luxury, sports car performance and all-terrain capability in one through its powerful V8, 310 PS engine. Maximum torque of 410 Nm propels the V8 to 62 mph in 8.1 seconds on its way to a top speed, where the law permits, of 135 mph.

THE V10 TDI.

The V10 TDI has totally changed the image of a diesel, which is not surprising from a 4x4 that develops 313 PS. Such power represents 750 Nm of torque at just 2,000 rpm. From standstill, 62 mph will be reached in just 7.8 seconds and a top speed of 140 mph, where the law permits.

* For full details of fuel consumption and CO₂ emissions data, please refer to the Specification and Price Guide supplied.

Please note: The maximum power output figures are quoted in PS (or Pferdestärke, which is the metric equivalent of horsepower). To convert from metric to imperial horsepower, divide the PS figure by 1.0139.

IN THE CITY
CREATE THE VIEW...



Model shown is V6 Sport fitted with optional 19" 'Atheo' alloy wheels.

...IN THE COUNTRY
EXPERIENCE THE VIEW.



Model shown is V10 TDI fitted with optional 19" 'Atheo' alloy wheels.

CREATED TO SEE THE WORLD.



Safety and efficiency are equally as important as looks in the Touareg. Take the V10 TDI's headlight system, for example. Xenon technology with dynamic curve lighting produces extremely powerful front headlights, designed to give a brighter light beam and wider coverage than traditional headlights. The V8 and V10 TDI all feature a dusk sensor that will automatically switch on the lights at dusk or when driving through a tunnel.



Advanced technology is also at work on the windscreen wiper system*. Sensors on the windscreen measure the amount of rainfall, assessing it alongside driving speed and wind pressure, then automatically setting the speed of the wipers to maximum effect. But it's the attention to detail, such as the coming/leaving home lighting function*, that really sets the Touareg apart. When you leave your Touareg at night-time, the surrounding area is illuminated by the front and rear lights, and the door mirror lights – and the duration of the lighting can be individually set.

* Standard on V8 and V10 TDI.



IN ANY SITUATION,
SAFETY MATTERS MOST.





PASSIVE SAFETY FEATURES.
PROTECTING YOU FROM
THE UNEXPECTED.

Driving can create many unforeseeable situations both on- and off-road. For this reason, safety features were high on the agenda when it came to developing the new Touareg. To begin with, the construction of the

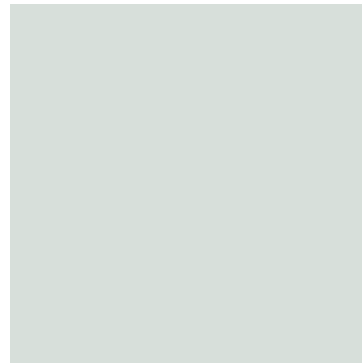
Touareg provides great strength and rigidity. This has been achieved through the use of high strength steel, placing steel tubes in the side sills, laser-welding the seams and galvanising throughout. Extensive crash testing has also been employed to ensure the bodyshell provides maximum built-in energy absorption at the front end. In the event of a frontal crash, the resulting forces would be diverted around the safety zone, providing protection against occupant injury.

The interior is equally well equipped with extensive safety features. Six airbags include two in the front, two at the side and curtain airbags for additional protection against side impact.



To help you avoid accidents in the first place, the Touareg is equipped with intelligent regulating systems for easy handling and the highest levels of active safety. To begin with, ABS brakes offer proven safety, preventing the wheels from locking and allowing the Touareg to steer around potential hazards. Complementing this, Electronic Brake-pressure Distribution (EBD) reallocates braking pressure between the front and rear wheels to ensure optimum

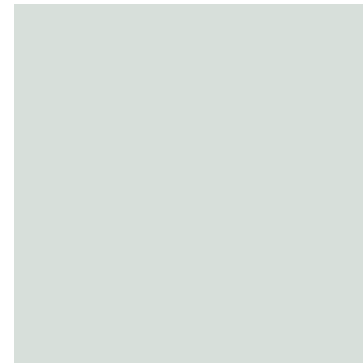
ABS



ESP

braking effect, whilst the Hydraulic Brake Assist (HBA) identifies an emergency stop and boosts braking pressure immediately to reduce the stopping distance. Electronic Stabilisation Programme (ESP) sensors detect the onset of oversteer or understeer and help restore the Touareg to its chosen path, also helping to suppress skids as soon as they begin. In addition, Anti-Slip Regulation (ASR) prevents the driven wheels from spinning either through controlled brake application or by intervening in the engine management system.

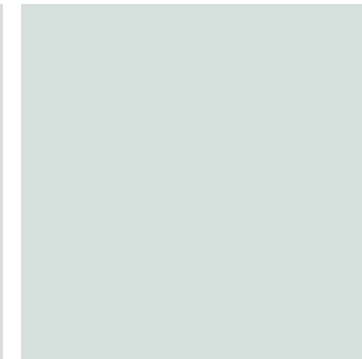
ASR



EDL

On loose or slippery surfaces, the Electronic Differential Lock (EDL) helps to improve traction. Should a wheel start to spin, the brake is applied and the tractive force then diverted to the other wheels via the differential. Finally, Engine Drag Torque Regulation (MSR) prevents the driven wheels from locking should the accelerator be lifted suddenly or the vehicle braked sharply because a low gear is engaged.

MSR



BUILT FOR OFF-ROAD ADVENTURERS,
4X4 ENTHUSIASTS AND EXECUTIVE
SALOON CAR DRIVERS. PERSONALISED
FOR INDIVIDUALS.



01

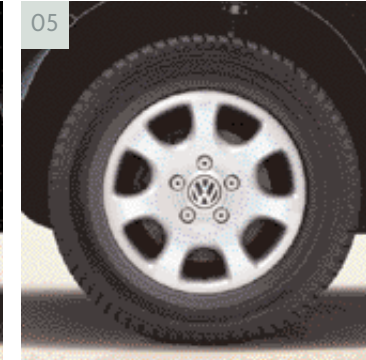


02

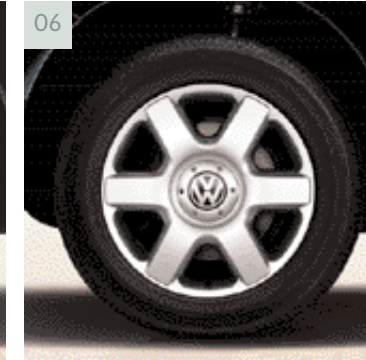
DISPLAYS:
01 5" colour screen (standard on V10 TDI).
02 Satellite navigation system with large format 6½" screen (standard on SE 2.5 TDI and SE Sport 2.5 TDI).
03 The combined 'Delta' radio and single CD player.



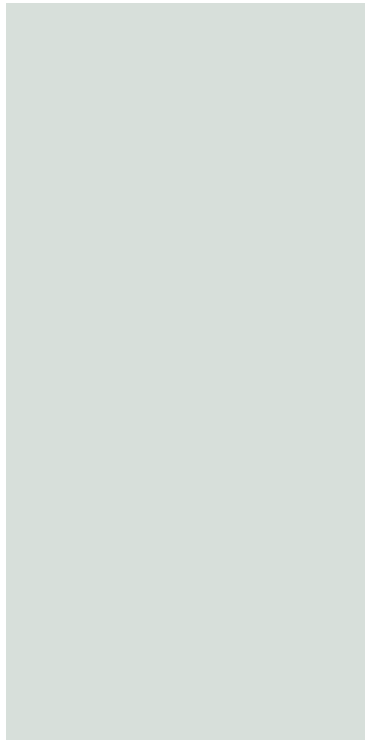
04



05



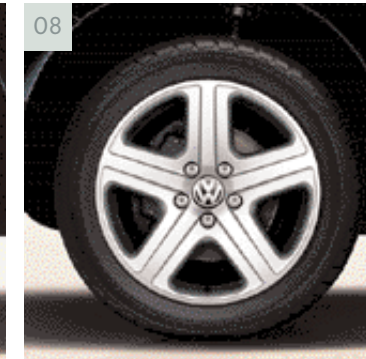
06



03



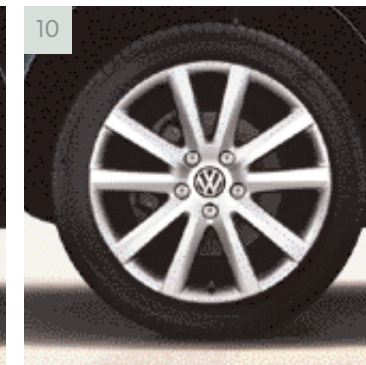
07



08



09



10

The Touareg is ready for anything – family outings, business trips or leisure pursuits. But why not go one step further and personalise your Touareg? A few examples from the full range of options and accessories are given here, but many others are available, offering great value for money and an easy way to achieve individual style.

For full details please enquire at your authorised Volkswagen luxury car specialist retailer.

ALLOY WHEELS:
04 'Canyon 5' 7½J x 17"
05 'Aspen' 7½J x 17"
06 'Nevada' 8J x 18"
07 'Valley' 8J x 18"
08 'Atheo' 9J x 19"
09 'Desert' 9J x 19"
10 'Mountain' 9J x 20"

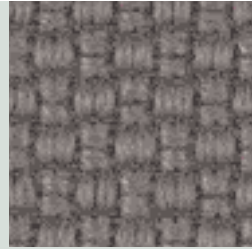
UPHOLSTERY.

Please note: The print processes do not allow exact reproduction of the upholstery colours.

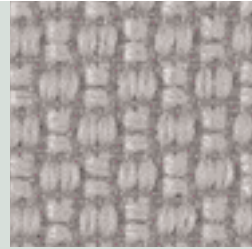
* Please note that Pure Beige, Reed Green and Teak are only available in conjunction with vehicles that have 12-way electrically-adjustable front comfort seats.

'TRAIL' CLOTH

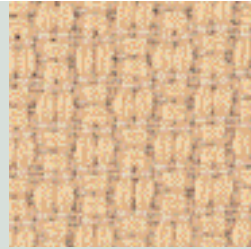
Standard
2.5 TDI, V6, V6 TDI,
2.5 TDI Sport, V6 Sport,
V6 TDI Sport



Anthracite



Crystal Grey

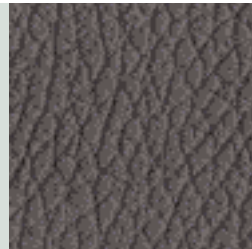


Sunny Beige

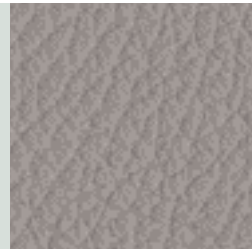
'CRICKET' LEATHER**

Optional
2.5 TDI, V6, V6 TDI,
2.5 TDI Sport, V6 Sport,
V6 TDI Sport

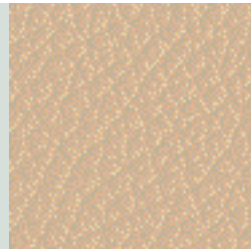
Standard
SE 2.5 TDI, SE Sport 2.5 TDI,
V8, V10 TDI



Anthracite



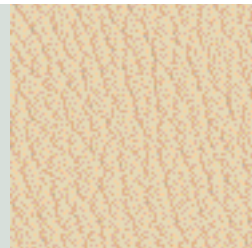
Crystal Grey



Pure Beige*



Reed Green*



Sunny Beige

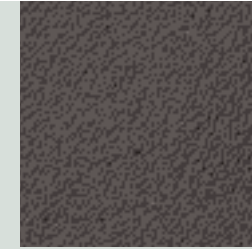


Teak*

**Leather upholstery consists of upper surface of seat base and backrest, front part of head restraints and top part of front and rear armrests.

'NAPPA' LEATHER†

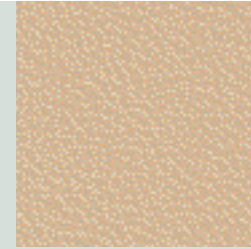
Optional – All models



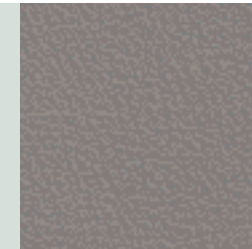
Anthracite



Crystal Grey



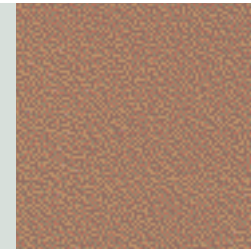
Pure Beige



Reed Green



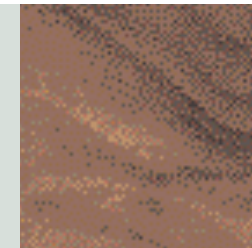
Sunny Beige



Teak

† Leather upholstery consists of seat base and backrest, door panel centre and door pull, head restraints and top part of front and rear armrests.

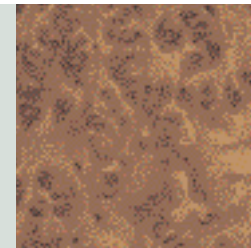
DECORATIVE INSERTS



Walnut



Myrtle



Vavona

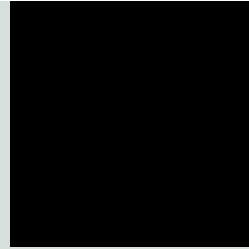
PAINT.

Please note: The print processes do not allow exact reproduction of the paint colours.

NON-METALLIC



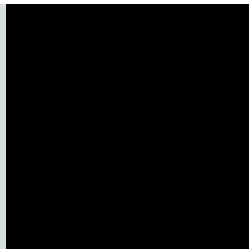
Ink Blue



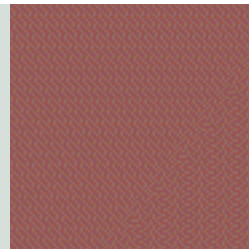
Black

PEARL EFFECT

Optional at extra cost
Standard on V10 TDI



Diamond Black



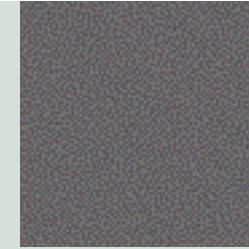
Colorado Red



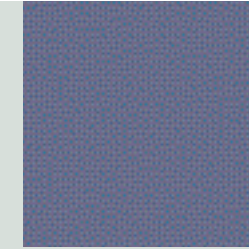
Venetian Green

METALLIC

Optional at extra cost
Standard on V10 TDI



Off-road Grey



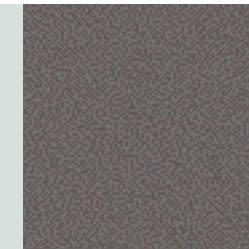
Raven Blue



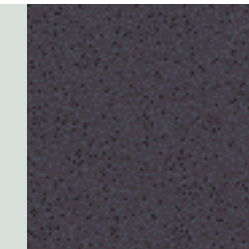
Reflex Silver



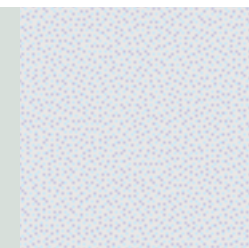
Salt Lake Grey



Reed Green



Shadow Blue



Silver Blue



Wheat Beige

COMBINATIONS.

SEAT UPHOLSTERY WOOD TRIM DASHBOARD

'TRAIL' CLOTH UPHOLSTERY ON NORMAL SEATS Standard on – 2.5 TDI, V6, V6 TDI, 2.5 TDI Sport, V6 Sport, V6 TDI Sport	Anthracite	Walnut/Myrtle	Anthracite
	Crystal Grey	Walnut/Myrtle	Anthracite
	Sunny Beige	Walnut/Myrtle/Vavona	Dark Beige
'CRICKET' LEATHER* ON NORMAL SEATS Optional on – 2.5 TDI, V6, V6 TDI, 2.5 TDI Sport, V6 Sport, V6 TDI Sport Standard on – SE 2.5 TDI, SE Sport 2.5 TDI	Anthracite	Walnut/Myrtle	Anthracite
	Crystal Grey	Walnut/Myrtle	Crystal Grey
	Sunny Beige	Walnut/Myrtle/Vavona	Dark Beige
'CRICKET' LEATHER* ON COMFORT SEATS Optional on – 2.5 TDI, V6, V6 TDI, SE 2.5 TDI, 2.5 TDI Sport, V6 Sport, V6 TDI Sport, SE Sport 2.5 TDI Standard on – V8, V10 TDI	Anthracite	Walnut/Myrtle	Anthracite
	Crystal Grey	Walnut/Myrtle	Crystal Grey
	Pure Beige	Walnut/Myrtle/Vavona	Dark Beige
	Reed Green	Walnut/Myrtle	Anthracite
	Sunny Beige	Walnut/Myrtle/Vavona	Dark Beige
	Teak	Walnut/Myrtle/Vavona	Anthracite
'NAPPA' LEATHER** ON COMFORT SEATS Optional on all models	Anthracite	Walnut/Myrtle	Anthracite
	Crystal Grey	Walnut/Myrtle	Anthracite
	Pure Beige	Walnut/Myrtle/Vavona	Dark Beige
	Reed Green	Walnut/Myrtle	Anthracite
	Sunny Beige	Walnut/Myrtle/Vavona	Dark Beige
	Teak	Walnut/Myrtle/Vavona	Anthracite

* Leather upholstery consists of upper surface of seat base and backrest, front part of head restraints and top part of front and rear armrests.
**Leather upholstery consists of seat base and backrest, door panel centre and door pull, head restraints and top part of front and rear armrests.

CARPETS

Ink Blue
Black
Off-road Grey Metallic†
Raven Blue Metallic†
Reflex Silver Metallic†
Salt Lake Grey Metallic†
Reed Green Metallic†
Shadow Blue Metallic†
Silver Blue Metallic†
Wheat Beige Metallic†
Diamond Black Pearl Effect†
Colorado Red Pearl Effect†
Venetian Green Pearl Effect†

Anthracite	•	•	•	•	•	•	•	•	•	•	•	•	•	•
Crystal Grey	•	•	•	•	•	•	•	•	•	•	•	•	•	•
Pure Beige	•	•	•	•			•	•		•	•	•	•	•
Anthracite	•	•	•	•	•	•	•	•	•	•	•	•	•	•
Crystal Grey	•	•	•	•	•	•	•	•	•	•	•	•	•	•
Pure Beige	•	•	•	•		•	•	•		•	•	•	•	•
Anthracite	•	•	•	•	•	•	•	•	•	•	•	•	•	•
Crystal Grey	•	•	•	•	•	•	•	•	•	•	•	•	•	•
Pure Beige	•	•	•			•	•	•	•	•	•	•	•	•
Reed Green		•			•	•	•				•		•	•
Pure Beige	•	•	•			•	•	•		•	•	•	•	•
Anthracite	•	•	•		•	•	•			•		•		•
Anthracite	•	•	•	•	•	•	•	•	•	•	•	•	•	•
Crystal Grey	•	•	•	•	•	•	•	•	•	•	•	•	•	•
Pure Beige	•	•	•			•	•	•	•	•	•	•	•	•
Reed Green		•			•	•	•				•		•	•
Pure Beige	•	•	•			•	•	•		•	•	•	•	•
Anthracite	•	•	•		•	•	•			•		•		•

† Metallic and Pearl Effect paint are optional at extra cost. Standard on V10 TDI models.

THE OWNERSHIP EXPERIENCE.



Owning and driving a Touareg is an extremely rewarding experience. It's not just the performance, build quality, comfort and practicality that satisfies, the level of after-sales support is exemplary. To deliver such high levels of service, we've introduced a network of specialist service outlets. There are around 50 service outlets for your Touareg, all having the necessary specialist equipment and high levels of skills required to look after your car.

Within each specialist service outlet we have introduced a new team member. Licensed Technicians meet the highest standards within their field for professionalism, skill and knowledge. Our aim is to make buying and looking after your car more enjoyable.

When it comes to servicing, we appreciate that it may be more convenient for us to visit you. So, whether you're at home or the office, one quick and easy phone call is all it takes to arrange for a convenient collection and delivery.

Naturally, we'll provide you with a replacement car from Volkswagen's luxury car range. We have also set up a dedicated telephone line for Touareg owners. Our Luxury Car Support Centre is open six days a week, and is a single point of contact for Touareg owners.



COMPREHENSIVE COVER FROM VOLKSWAGEN ASSISTANCE.

As a Touareg owner, your vehicle will be covered for three years* by the excellent support service of Volkswagen Assistance. This is a 24 hour, 365 days a year pan-European emergency home and roadside recovery service manned by professional multilingual staff. It's not just there for the unlikely event of a breakdown, Volkswagen Assistance can ease the uncertainty following an accident or the inconvenience should you run out of fuel or lose your keys. You will benefit from a priority response following your call and Volkswagen Assistance aims to provide a replacement car if necessary within two hours of the requirement being identified. Volkswagen Assistance provides many benefits and complete peace of mind.

For example, should you be in the unfortunate situation of a breakdown, we'll arrange overnight accommodation or onward travel for you and your passengers. In addition, if required there's an Accident Management Service to help you through the particularly stressful time following an accident.

Terms and conditions apply. Please see your authorised Volkswagen luxury car specialist retailer for details and brochure.

* From date of first registration.



Model shown is V10 TDI.

VOLKSWAGEN SERVICE FOR YOUR PEACE OF MIND.

The Volkswagen Warranty. Three-year Warranty.

All Volkswagen Touaregs come with a three-year/60,000 miles warranty, which protects your car against the failure of most mechanical and electrical components due to manufacturing defects. This comprises a two-year manufacturer's warranty with unlimited mileage plus a further one-year/60,000 miles (whichever is soonest) Retailer Warranty. Should the mileage exceed 60,000 miles within the first two years, the manufacturer's two-year warranty will still be valid. If an additional warranty for subsequent years or higher mileage is desired, it may be purchased from any authorised Volkswagen luxury car specialist retailer; however, this additional warranty must be purchased before the mileage reaches 60,000. Full details of the three-year warranty are available from your authorised Volkswagen luxury car specialist retailer. This three-year warranty is only available on vehicles purchased in the UK through an authorised Volkswagen luxury car specialist retailer.

Three-year Paint Warranty. The paintwork of the Touareg is covered against manufacturing defects for a period of three years. Naturally, the Touareg must be cared for in compliance with the operating instructions which will be found in your vehicle handbook. Please consult your authorised Volkswagen luxury car specialist retailer or repairer for full warranty details.

12-year Body Protection Warranty. The internal body sections and panels of the Touareg are covered against rusting through from the inside for a period of 12 years. Naturally, the Touareg must be cared for in compliance with the operating instructions. Please consult your authorised Volkswagen luxury car specialist retailer or repairer for full warranty details.

Service Intervals. Volkswagen has always been dedicated to protecting the environment. That's why all Touaregs come with a LongLife Service regime. As a result of longer service intervals the engine oil requirement can be significantly reduced over the vehicle's total life, which results in less waste oil to dispose of and reduces the burden on the environment.

The LongLife Service regime is so called because there are no set service intervals. The interval between services, depending on how you drive your vehicle and the conditions of use, can be anywhere from 9,000 miles or 12 months (whichever is soonest), up to a maximum of 20,000 miles* or 24 months (whichever is soonest). The Service Interval Display in the instrument panel will indicate when a service is required.

This LongLife Service regime has been made possible due to the development of new Volkswagen engines with the latest technically advanced long-life oils. These engines use built-in sensors that continually monitor the oil quality, making it possible to enjoy reliable and confident motoring for up to a maximum of 20,000 miles* or 24 months (whichever is soonest).

If you would like a more traditional service regime the Touareg can be adapted by your authorised Volkswagen luxury car specialist retailer or repairer to the Time/Distance regime. This can be done at the point of vehicle sale or when an inspection service is carried out.

* All mileages are approximate as the system uses kilometres as the distance measure.

Please consult your authorised Volkswagen luxury car specialist retailer or repairer for full details.

Approved Accessories. A comprehensive range of accessories from alloy wheels to carpet mats is available to complement the factory-fitted option list. Volkswagen Approved accessories purchased from and fitted by your authorised Volkswagen luxury car specialist retailer at the point of vehicle sale will also benefit from the three-year vehicle warranty.

Maximum Peace Of Mind. To ensure you are effectively insured, Volkswagen Insurance (the trading name of Volkswagen Insurance Services Limited) offers policies developed specifically for Volkswagen drivers. The main benefit of being covered by one of the UK's largest manufacturer-approved insurance schemes is the complete peace of mind it provides. For example, should your Touareg require repair, we guarantee it will only be completed by an authorised specialist Volkswagen retailer or repairer.

Approved Used Cars. Confidence, peace of mind, reassurance. These are the virtues of buying an Approved Used car because every car has, or is supported by:

- Multipoint inspection
- Comprehensive reconditioning and valeting
- Vehicle mileage check and certificate
- Vehicle validation check and certificate
- 12-month warranty
- MOT test cover
- Volkswagen Assistance
- 30-day/1,000 miles 'no quibble' exchange policy

And for Approved Used Volkswagens, a service history check and certificate are also provided. When it comes to buying a used car, it's important that you can be confident in its mechanical condition, mileage and history. The Volkswagen Approved Used scheme should help put your mind at ease. Every Approved Used car for sale will have passed a rigorous inspection, and any problems found will have been rectified before the car is made ready for sale. For your extra peace of mind, it will be covered by a 12-month warranty and a 30-day/1,000 miles 'no quibble' exchange policy.

Personal Finance Solutions. We appreciate that financial needs differ, so you'll find a team of professional advisors on hand at our specialist retailers. They will be able to offer you cost-effective, tried and trusted financial products including a range of products for both private and business consumers alike, from Volkswagen Finance*.

*Volkswagen Finance is a trading name of Volkswagen Financial Services (UK) Limited.

CO₂ Emission. The weight of a vehicle will influence the level of CO₂ emission it produces; as a result, vehicles with higher levels of specification and factory-fitted options may emit higher levels of CO₂.

The CO₂ figure quoted for each vehicle is the maximum possible. The unladen weight of the vehicle is calculated by range at the time of manufacture and the maximum possible CO₂ emission for that weight range is applied according to the Council Directive 80/1268EEC as amended by Commission Directive 1999/100/EC on the approximation of the laws of the member states relating to the carbon dioxide emissions and the fuel consumption of motor vehicles.

Please Note: Some illustrations in this brochure do not necessarily reflect UK specifications and may not be available. In particular, controls and some items of equipment are positioned differently for the UK.

The specifications contained in this brochure are for information purposes only and are subject to change. If you require any specific feature, you must consult your authorised Volkswagen luxury car specialist retailer who is regularly updated with any change in specification. Please check model availability and full specification details with your authorised Volkswagen luxury car specialist retailer prior to ordering.

Note: We would like to advise you that telephone calls to Volkswagen Customer Care may be monitored and recorded as part of our training and quality assurance processes. All our monitoring and recording processes meet Ofcom regulations.

VOLKSWAGEN FLEET BUSINESS CENTRE
TELEPHONE 0800 38 989 38
PRINTED IN ENGLAND. ISSUE: 1 NOVEMBER 2004
WWW.VOLKSWAGEN.CO.UK/FLEET

The illustrations in this book do not necessarily reflect UK specifications and some items of equipment may not be available for the UK. The specifications contained in this book are for information purposes only as we cannot confirm the exact specifications of the vehicles. 4XMOTION and TDI are registered trademarks of Volkswagen AG.