



THE NEW TOUAREG.

## CONTENTS.

- 04 INTRODUCTION.
- 06 ENGINES.
- 08 SAFETY.
- 10 NAVIGATION.
- 14 EQUIPMENT.
- 19 UPHOLSTERY AND PAINTS.
- 25 TECHNICAL SPECIFICATION.
- 31 TOUAREG UNLIMITED.
- 33 TOUAREG OWNERSHIP.
- 35 VOLKSWAGEN SERVICE.



Model shown is SE V10 TDI DPF with optional 20" 'Ayers rock' alloy wheels and roof rails.



Model shown is SE V10 TDI DPF with optional 20" 'Ayers rock' alloy wheels and roof rails.

## DISCOVER THE WORLD AT YOUR FEET.

Mountain pass or motorway, country lane or city centre, on-road or off, the Touareg is uniquely equipped to take all terrain in its stride. Powerfully, effortlessly, stylishly. No other off-road vehicle comes close in terms of luxury, comfort or refinement. From the chrome-framed radiator grille and headlights to the polished shine of the alloys and newly designed rear light clusters, the Touareg exudes quality and capability. Exceptional engine technology delivers top speeds of up to 143 mph. Formidable off-road performance masters 45° slopes with ease, enabling you to access places you've never ventured before. So, let the adventure begin. Discover endless driving experiences and a whole new world – in Touareg luxury.

## THE POWER OF A TRUE OFF-ROAD PERFORMER.

What the exterior styling of the Touareg promises, the powerful engines deliver. City streets, fast roads or desolate terrain, there is plenty of power in reserve, ensuring exceptional performance both on- and off-road. A choice of a petrol engine or three class-leading diesel engines all use powerful torque to achieve acceleration and performance throughout the rev range. Together with 4XMOTION four wheel drive and Electronic Differential Lock (EDL) to distribute power intelligently to all four wheels, all four engines ensure maximum ride comfort whatever the terrain.

### THE 2.5 TDI DPF.

Smooth and efficient, the 2.5 TDI DPF 174 PS delivers everything you would expect from a Volkswagen diesel: 0-62 mph in 11.5 seconds, a maximum torque of 400 Nm and it can accelerate from 30 to 70 mph in under 12 seconds.

### THE V6.

In any situation, efficient performance is provided by this 280 PS engine. Developing peak torque of 360 Nm at 2,500-5,000 rpm, it can accelerate from standstill to 62 mph in 8.6 seconds.

### THE V6 TDI/V6 TDI DPF.

The 3.0 V6 TDI/V6 TDI DPF also combines power with performance by developing 500 Nm of torque at just 1,750 rpm with an equally impressive acceleration of 0-62 mph in 9.2 seconds.

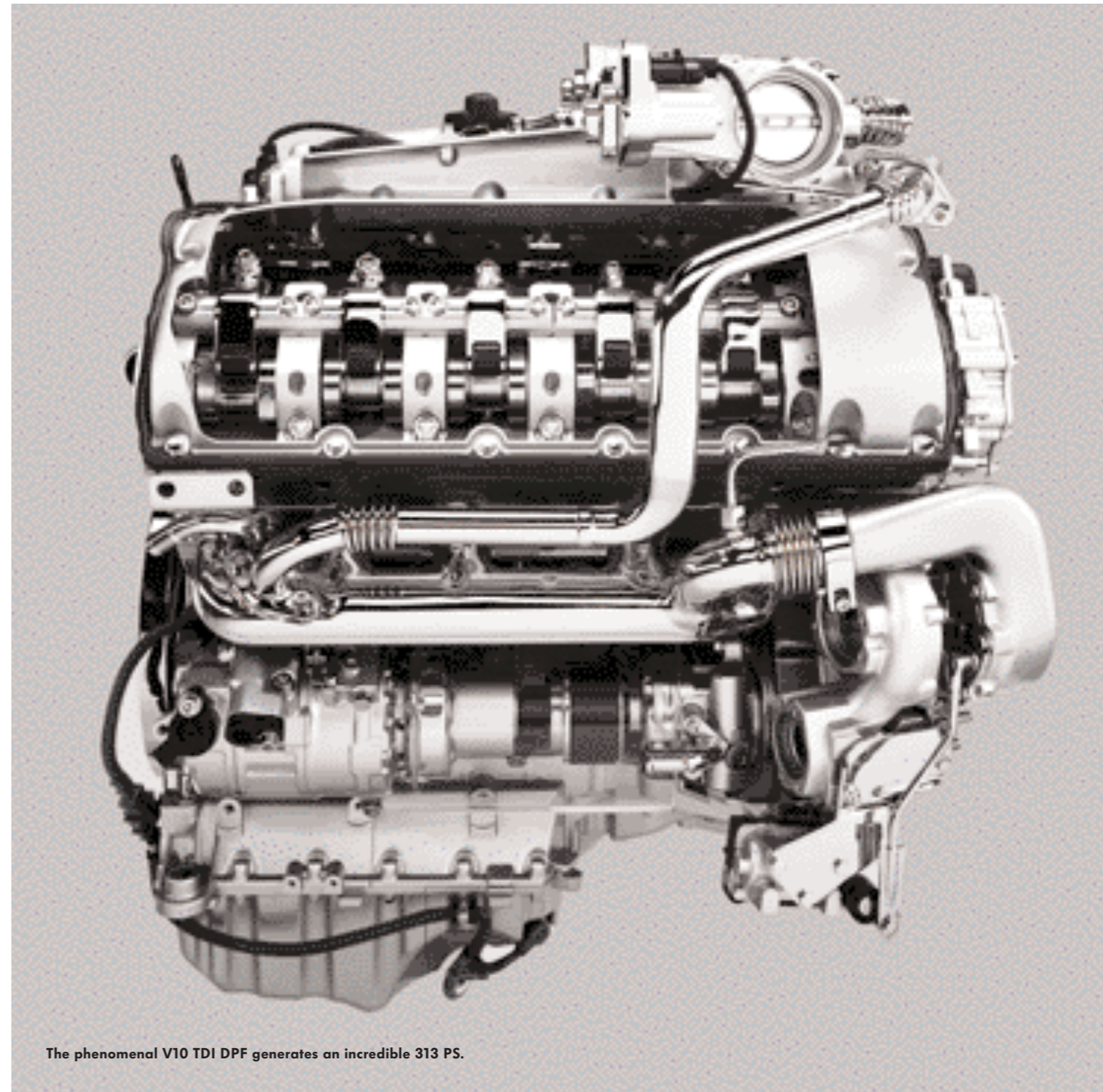
### THE V10 TDI DPF.

The V10 TDI DPF has totally changed the image of a diesel, which is not surprising from a 4x4 that develops 313 PS. Such power represents 750 Nm of torque at just 2,000 rpm. From standstill, 62 mph will be reached in just 7.4 seconds and a top speed of 143 mph, where the law permits.

### THE DIESEL PARTICULATE FILTER (DPF).

As part of Volkswagen's desire to satisfy European emissions legislation, all new Touareg diesel engines are now available with a Diesel Particulate Filter (DPF). This is part of the exhaust system responsible for cleaning the exhaust gases before they enter the atmosphere. In addition to converting the harmful exhaust gases in the same way as a conventional catalytic converter, the DPF uses advanced technology to reduce the emission of black smoke and soot. It filters the exhaust gases and particles before they leave the vehicle exhaust system, resulting in a cleaner environment and less pollution entering the atmosphere.

Please note, driving conditions within inner-cities and the Channel Islands may not provide optimum conditions for the use of DPF technology. Therefore, it is advised that you consider this before ordering your vehicle with DPF.



**The phenomenal V10 TDI DPF generates an incredible 313 PS.**

ABSplus

ESP

HBA

MSR



## INTELLIGENT SAFETY.

A climbing capability of 45°, fording depth of up to 500 mm, or opt for air suspension with 6-stage self-levelling control, standard on V10 TDI DPF models, to increase the depth to 580 mm ensuring the Touareg is well prepared to tackle any adventure. Safety though, is of primary importance, and thanks to state-of-the-art driver aids it is equipped with innovative ideas and the latest technology to keep you safe at all times and meet any challenge with ease.

Take new ABSplus for example. This new anti-lock braking system is specifically designed for off-road vehicles, using sensors in the Electronic Stabilisation Programme (ESP) to shorten the braking distance on loose ground, such as sand, gravel or grass, by up to 20%. A new dry braking function also now comes as standard with ESP, ensuring the brake pads regularly touch the brake discs to free them from water, significantly shortening the braking distance and improving safety in bad weather.

Complementing this, Electronic Brake-pressure Distribution (EBD) reallocates braking pressure between the front and rear wheels to ensure optimum braking effect, whilst the Hydraulic Brake Assist (HBA) identifies an emergency stop and boosts braking pressure immediately to further reduce the stopping distance. Finally, Engine Drag Torque Regulation (MSR) prevents the driven wheels from locking should the accelerator be lifted suddenly or the vehicle braked sharply because a low gear is engaged.

On V10 TDI DPF models, Bi-Xenon headlights with dynamic curve lighting produce a brighter light beam and wider coverage than traditional headlights, and feature a dusk sensor that will automatically switch on the lights at dusk or when driving through a tunnel. Additionally on V10 TDI DPF models, advanced technology is also at work on the windscreen wiper system where rain sensors automatically set the speed of the wipers to maximum effect and an ingenious automatic dimming interior rear-view mirror will darken if a following car's headlights are too bright.

In addition to all these intelligent safety concepts, the Touareg is also very well equipped on the interior. Six airbags include two in the front, two side and curtain airbags for additional protection against side impacts.



WHETHER YOU ARE HEADING FOR A CITY CENTRE OR RURAL RETREAT, LET SATELLITE NAVIGATION CHOOSE THE BEST ROUTE.

Wherever you may venture with your Touareg, finding your way has never been easier. Whether it's a first-class restaurant in the heart of a city or a fishing hideaway in the countryside, the satellite navigation is there to guide you to your destination. Simply enter the town and street, and the state-of-the-art navigation system will find the most suitable route. There's never been a better reason to head off the beaten track.

Operating the system is simplicity itself, as you'll appreciate the very first time you call upon its assistance. Details of your current position and the directions you'll need to follow will be clearly displayed on the navigation system's 6½" colour screen, positioned on the centre console.

Navigation information is also displayed on the multifunction screen positioned in the dashboard. To ensure you keep your eyes on the road ahead, the navigation system can also talk you through your route with precise audible instructions such as distance covered and your approximate time of arrival. Driving doesn't come much easier.

The DVD satellite navigation/radio system is standard on SE and Altitude and is available as an option on entry Touareg. Included with this option is a six disc, boot-mounted CD autochanger which provides hours of uninterrupted listening pleasure.





Interior shown is SE V10 TDI with optional 'Nappa' leather.



Interior shown is SE V6 TDI with optional parking sensors and 'Engine spin' decorative inserts.

## PERSONALISED FOR INDIVIDUALS.

Whichever Touareg you choose, you can be assured that you will be provided with a wealth of standard features to make any journey comfortable and relaxing. But for added satisfaction, why not go one step further and personalise your Touareg? There is a multitude of optional equipment available to make your Touareg as individual as you are. For example, choose 12-way electric comfort seats covered with sumptuous 'Nappa' leather and you can make any journey in the ultimate comfort. Add to that the optional 'Engine spin' or 'Walnut' decorative inserts for an aesthetically individual interior to keep you totally relaxed and stress-free.

Providing comfort for the passengers in your car in no less important and you can make them feel right at home with 4Zone electronic climate control. Each quarter of the cabin can choose their preferred temperature within a 4°C variance between adjacent zones. Or choose the DVD rear seat entertainment system mounted in the vehicle's roof lining and complete with single foldaway screen, infrared headphones and remote control.

Or if off-roading in your Touareg is your thing, then you can prepare it for any situation with Differential Lock for the rear axle and decoupling anti-roll bars, including an additional engine guard to give you extra protection when you go off the beaten track.





Model shown is SE V10 TDI DPF with optional 20" 'Ayers rock' alloy wheels and roof rails.

# WHEELS.



The range of standard alloy wheels has been carefully chosen to complement the exterior styling of all Touaregs. However, you may wish to add a touch of individuality and personalise your Touareg with a choice of 19 or 20 inch alloy wheels. Whichever alloy wheel you choose, you can be certain of Volkswagen's superb design and engineering.

- 01 'Canyon 5' 7½ x 17" standard on entry Touareg.
- 02 'Valley' 8J x 18" standard on SE. Optional on entry Touareg.
- 03 'Siena' 9J x 19" standard on Altitude. Not V10 TDI DPF.
- 04 'Casablanca' 9J x 20" standard on Altitude V10 TDI DPF.
- 05 'Desert' 9J x 19" optional on SE.
- 06 'Terra' 9J x 19" optional on SE.
- 07 'Ayers rock' 9J x 20" optional on SE and Altitude.

NON-METALLIC PAINT

Black\*  
Campanella White



Black\*



Campanella White

METALLIC PAINT

Optional at extra cost  
Standard – V10 TDI DPF  
models

Shadow Blue  
Atacama Grey  
Arctic Blue Silver  
Reflex Silver  
Galapagos



Shadow Blue



Atacama Grey



Arctic Blue Silver



Reflex Silver



Galapagos

PEARL EFFECT PAINT

Optional at extra cost  
Standard – V10 TDI DPF  
models

Diamond Black



Diamond Black

Please note: The print processes do not allow exact reproduction of the paint colours.

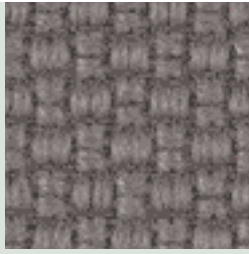
\* Please note that Black non-metallic paint is not available on Altitude models.



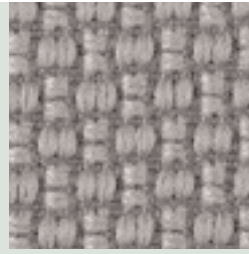
'TRAIL' CLOTH

Standard – Entry Touareg

Anthracite  
Crystal Grey



Anthracite



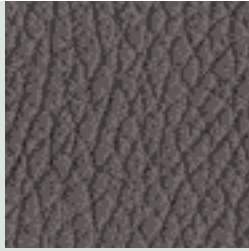
Crystal Grey

'CRICKET' LEATHER†

Optional – Entry Touareg  
Standard – SE, Altitude

Anthracite  
Pure Beige

† Some parts of leather interior  
will contain artificial leather.



Anthracite



Pure Beige

'NAPPA' LEATHER†

Optional – SE, Altitude

Anthracite  
Crystal Grey  
Latte  
Pure Beige



Anthracite



Crystal Grey



Latte



Pure Beige

† Some parts of leather interior  
will contain artificial leather.

Please note: The print processes do  
not allow exact reproduction of the  
upholstery colours.



'ANTHRACITE'  
DECORATIVE INSERTS

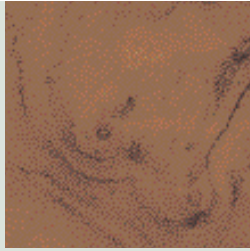
Standard – Entry Touareg



'Anthracite'

'WALNUT'  
DECORATIVE INSERTS

Standard – SE  
Optional – Entry Touareg,  
Altitude



'Walnut'

'PIANO BLACK'  
DECORATIVE INSERTS

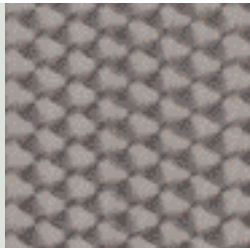
Standard – Altitude  
Optional – SE



'Piano Black'

'ENGINE SPIN'  
DECORATIVE INSERTS

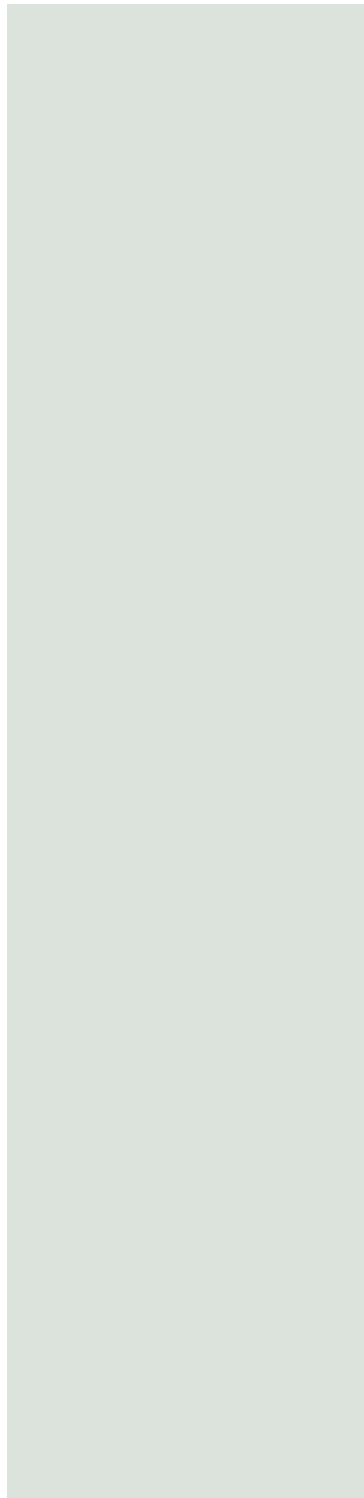
Optional – SE, Altitude



'Engine spin'

Please note: The print processes do not allow exact reproduction of the decorative insert colours.





**Sumptuous 'Nappa' leather upholstery provides an air of exclusivity.**

# COMBINATIONS.

	SEAT UPHOLSTERY	DECORATIVE TRIM
'TRAIL' CLOTH UPHOLSTERY ON NORMAL SEATS  Standard – Entry Touareg	Anthracite	Anthracite
	Crystal Grey	Anthracite
'CRICKET' LEATHER* ON NORMAL SEATS  Standard – SE, Altitude†	Anthracite	Walnut/Piano Black
	Pure Beige	Walnut/Piano Black
'CRICKET' LEATHER* ON NORMAL SEATS  Optional – Entry Touareg	Anthracite	Anthracite
	Pure Beige	Anthracite
'CRICKET' LEATHER* ON COMFORT SEATS  Optional – SE, Altitude† Standard – V10 TDI DPF models	Anthracite	Walnut/Piano Black
	Pure Beige	Walnut/Piano Black
'NAPPA' LEATHER* ON COMFORT SEATS  Optional – SE, Altitude†	Anthracite	Walnut/Piano Black
	Crystal Grey	Walnut/Piano Black
	Latte	Walnut/Piano Black
	Pure Beige	Walnut/Piano Black

\* Some parts of leather interior will contain artificial leather.

DASHBOARD	CARPETS	Black†	Campanella White	Shadow Blue Metallic‡	Atacama Grey Metallic‡	Arctic Blue Silver Metallic‡	Reflex Silver Metallic‡	Galapagos Metallic‡	Diamond Black Pearl Effect‡
Anthracite	Anthracite	•	•	•	•	•	•	•	•
Crystal Grey	Crystal Grey	•	•	•	•	•	•	•	•
Anthracite	Anthracite	•	•	•	•	•	•	•	•
Dark Beige	Pure Beige	•		•	•			•	•
Anthracite	Anthracite	•	•	•	•	•	•	•	•
Dark Beige	Pure Beige	•		•	•			•	•
Anthracite	Anthracite	•	•	•	•	•	•	•	•
Dark Beige	Pure Beige	•		•	•			•	•
Anthracite	Anthracite	•	•	•	•	•	•	•	•
Crystal Grey	Crystal Grey	•	•	•	•	•	•	•	•
Dark Latte	Latte	•		•	•			•	•
Dark Beige	Pure Beige	•		•	•			•	•

† Please note that Black non-metallic paint is not available on Altitude models. ‡ Metallic and Pearl Effect paint are optional at extra cost. Standard on V10 TDI DPF models.

# TECHNICAL SPECIFICATION.

	2.5 litre TDI DPF	3.6 litre V6
<b>ENGINE</b>		
Engine type	Five cylinder diesel	Six cylinder petrol
Cubic capacity, ltrs/cc	2.5/2461	3.6/3597
Max. output, PS <sup>(01)</sup> /kW at rpm	174/128 3500	280/206 6250
Max. torque, lbs.ft/Nm at rpm	295/400 2250	265/360 2500-5000
Gearbox	Six speed manual Six speed auto tiptronic	Six speed auto tiptronic
<b>WEIGHTS, KGS</b>		
Unladen weight <sup>(02)</sup>	2247 (2267)	(2238)
Gross vehicle weight <sup>(02)</sup>	2850	(2945)
Payload <sup>(02)</sup>	603 (583)	(707)
Axle load limit: Front	1425	1415
Rear	1640	1640
<b>TRAILER LOAD LIMITS, KGS<sup>(03)</sup></b>		
Braked 12% incline	3500	3500
Unbraked	750	750
Nose weight	140	140
Roof weight	100	100

3.0 litre V6 TDI/DPF	5.0 litre V10 TDI DPF
Six cylinder diesel	10 cylinder diesel
3.0/2967	5.0/4921
225/165 4000	313/230 3750
369/500 1750	553/750 2000
Six speed auto tiptronic	Six speed auto tiptronic
(2321)	(2602)
(2945)	(3200)
(624)	(598)
1460	1635
1610	1670
3500	3500
750	750
140	140
100	100

## NOTES

- 01 The maximum power output figures are quoted in PS (or Pferdestärke, which is the metric equivalent of horsepower). To convert from metric to imperial horsepower, divide the PS figure by 1.0139. For example, 240 PS is equivalent to 237 bhp.
- 02 Figures are calculated in accordance with manufacturer's criteria. Vehicle unladen weight ranges with 90% tank capacity without driver (75 kg). The individual unladen weight depends on the specification of the vehicle, this then reduces the possible payload accordingly. Figures in ( ) refer to automatic gearboxes.
- 03 With increasing altitude the engine performance diminishes. From 1,000 m above sea level and for every 1,000 m thereafter 10% of the vehicle/trailer weight (trailer weight + gross vehicle weight) must be deducted.
- 04 Fully compatible with 5% bio diesel in accordance with EN590 Standard.
- 05 Thanks to the knock control, unleaded four star (at least 95 RON) can be used instead of unleaded Super plus.
- 06 Official fuel consumption according to EU Directive 99/94. Figures in ( ) refer to automatic gearboxes. The consumption calculation according to 1999/100/EC is based on the actual unladen weight of the vehicle. Additional specifications can lead to a higher weight class and hence to consumption figures of this higher weight class. The driving style, road and traffic conditions, environmental influences and vehicle condition can in practice lead to consumption figures, which may differ from those calculated with this standard.
- 07 The weight of a vehicle will influence the level of CO<sub>2</sub> emission it produces; as a result, vehicles with higher levels of specification and factory-fitted options may emit higher levels of CO<sub>2</sub>. The CO<sub>2</sub> figure quoted for each vehicle is the maximum possible. The unladen weight of the vehicle is calculated by range at the time of manufacture and the maximum possible CO<sub>2</sub> emission for that weight range is applied according to the Council Directive 80/1268EEC as amended by Commission Directive 1999/100/EC on the approximation of the laws of the member states relating to the carbon dioxide emissions and the fuel consumption of motor vehicles. Figures in ( ) refer to automatic gearboxes.



## THE TECHNOLOGY.

### ENGINES

- 2.5 litre TDI DPF/128 kW (174 PS) diesel engine.  
Five cylinder in-line engine, two valves per cylinder utilising crossflow principle, aluminium cylinder crankcase with plasma coated bores, 'Pumpe Düse' high pressure injection system, variable vane turbocharger, electronic accelerator engine control
- 3.6 litre/206 kW (280 PS) V6 petrol engine.  
Six cylinder 'V' engine, four valves per cylinder, electronic direct injection (FSI), grey cast iron cylinder crankcase, cylinder angle 10.6° in VR design, bore 89 mm, stroke 96.4 mm, connecting rod length 164 mm, cylinder distance 64 mm, valve drive via roller rocker arms, continuous inlet and exhaust camshaft adjustment, single spark ignition, electronic accelerator engine control
- 3.0 litre TDI/165 kW (225 PS) V6 diesel engine.  
Six cylinder 'V' engine, four valves per cylinder, two overhead camshafts per cylinder bank, turbocharger with variable turbine geometry, valve drive via roller valve levers, injection system of the third generation with Piezo inline injectors and 1,600 bar injection pressure, diesel particle filter
- 5.0 litre TDI DPF/230 kW (313 PS) V10 diesel engine.  
10 cylinder 'V' engine, aluminium cylinder crankcase, 'Pumpe Düse' high pressure injection system, twin turbochargers with electronic boost adjustment, bore 81 mm, stroke 95.5 mm, connecting rod length 144 mm, cylinder distance 88 mm, compression 18.5 : 1, engine management with master-slave principle

### RUNNING GEAR

- Front and rear independent suspension on double wishbones with acoustically insulated subframes
- Front and rear anti-roll bar

### TRANSMISSION

- Permanent four wheel drive, central differential with electronically controlled friction-disc lock and low range gearing, four wheel EDL
- 2.5 TDI DPF: Six speed manual gearbox  
Six speed automatic tiptronic gearbox
- V6: Six speed automatic tiptronic gearbox
- V6 TDI/DPF: Six speed automatic tiptronic gearbox
- V10 TDI DPF: Six speed automatic tiptronic gearbox

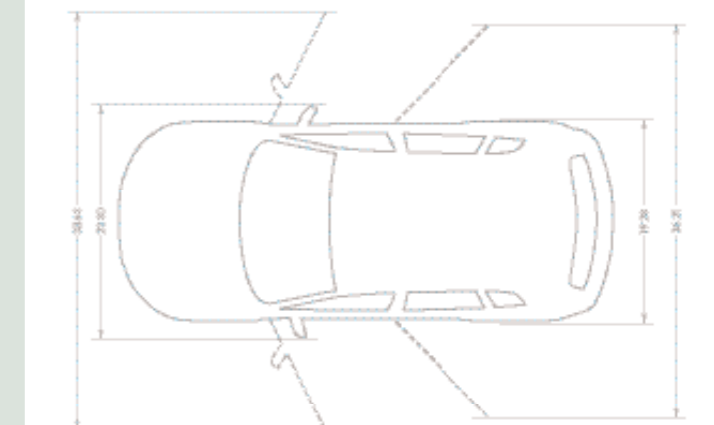
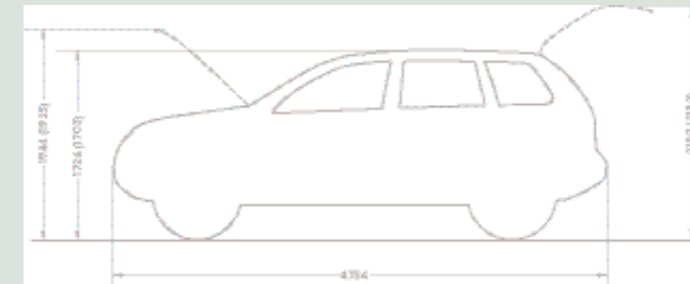
## DIMENSIONS.

2.5 TDI DPF

3.6 V6, 3.0 V6 TDI/DPF 5.0 V10 TDI DPF

	2.5 TDI DPF	3.6 V6, 3.0 V6 TDI/DPF	5.0 V10 TDI DPF
<b>EXTERIOR DIMENSIONS</b>			
Length, mm	4754	4754	4754
Width, mm	1928	1928	1928
Height, mm	1726	1726	1703
Wheelbase, mm	2855	2855	2855
Front/rear track width, mm	1658/1670	1649/1661	1645/1657
Turning circle, m	11.6	11.6	11.6
<b>INTERIOR DIMENSIONS</b>			
Effective front head room, mm (sunroof)	1008 (983)	1008 (983)	1008 (983)
Effective rear head room, mm (sunroof)	987 (982)	987 (982)	987 (982)
Front elbow width, mm	1504	1504	1504
Rear elbow width, mm	1505	1505	1505
<b>MAXIMUM LUGGAGE CAPACITY, LITRES (VDA measuring method using 200 x 100 x 50 mm blocks)</b>			
Capacity – rear seats upright	555/500*	555/500*	500/500*
Capacity – rear seats folded	1570/1525*	1570/1525*	1525/1525*

\*Please note the figure shown include either optional leather upholstery, 4Zone electronic climate control or the cargo management system.



All figures in millimetres. Figures in brackets are V10 TDI DPF.

THERE ARE SOME PLACES  
ONLY A SELECT FEW CAN REACH.  
WELCOME TO TOUAREG UNLIMITED.



There aren't many places that are off limits in your Touareg. Take it off-road and it's more than capable of climbing the steepest slopes, or crossing the roughest ground. And on the road, the Touareg's saloon-like handling means it's quite happy making its way through the most winding of urban streets. But you may not be aware there's another place Touareg owners can visit.

[www.touareg-unlimited.co.uk](http://www.touareg-unlimited.co.uk) is a web site dedicated to those owners who want more than just a great car with great abilities. Once you've registered, you can discover more about just what your Touareg is capable of and learn about exciting driving experiences. In short, when it comes to getting the most out of your Touareg, the possibilities are unlimited.

At the web site, you will have access to some fantastic tailor-made holiday opportunities, like a luxury outdoor country pursuits weekend at Calcot Manor, deep in the beautiful Cotswolds' countryside, and close to some of the most challenging off-road terrain in Britain. And if you're up for something more extreme, how about a four day break driving on frozen lakes and ice-packed roads? Of course, we'll be supplying the Touaregs, all you have to bring with you are nerves of steel.



#### GAIN ACCESS TO MAJOR SPORTING EVENTS.

By simply registering your details online, all Touareg owners will be eligible to receive privileged ticket information about events from the worlds of sailing, equestrian sports, shooting, horse racing and many more. There are exclusive ticket deals on offer, and you'll be invited to events as a special guest of Volkswagen. You'll also find fascinating exclusive interviews on the web site with well-known British sports personalities and Touareg owners, such as leading cricketer Freddie Flintoff.

#### LEARN MORE ABOUT YOUR TOUAREG.

Can my Touareg scale a 45 degree slope? On uneven ground? In sub-zero conditions? If you've a question about your Touareg and its abilities, our dedicated customer advisors are the ones to ask. They probably know more about your car than anyone and if they can't answer your question they will find someone that can.

All registered owners also receive a complimentary copy of our exclusive Touareg Unlimited book. This glossy hard-backed edition is packed with stunning shots of the Touareg in action, and shows you its amazing abilities in extreme detail. Inside, you'll also find in-depth information about the Touareg, as well as discover some interesting facts.

#### THE TOUAREG UNLIMITED EXPERIENCE.

The Touareg brings endless driving opportunities, taking you places you've never been before. It's such great entertainment, we've developed a driving experience programme so that you can familiarise yourself with its true potential. Simply describing the capabilities of this 4x4 does not do justice to the Touareg experience, so this exciting day incorporates two distinct encounters: off-road and track. Whilst the off-road section will have you tackling sand, rocks and steep inclines (and encouraging you to drive responsibly too), the track will demonstrate the Touareg's on-road handling and dynamics. The Touareg Unlimited experience is complimentary with every purchase of a new Touareg and is designed to be enjoyable and fun, with a serious side. It uses standard cars, and is designed to suit enthusiasts and non-enthusiasts alike. To ensure you gain maximum benefit, the training will be held in small groups and you'll also have a choice of venues and dates for your convenience.

You'll tackle most things on your Touareg Unlimited day, but what if you come across something tricky in the future? Simple, just go to the Masterclass section on the web site. There you can discover videos to help you cope with every possible situation.



## THE OWNERSHIP EXPERIENCE.



Owning and driving a Touareg is an extremely rewarding experience. It's not just the performance, build quality, comfort and practicality that satisfies, the level of after-sales support is exemplary. To deliver such high levels of service, we've introduced a network of specialist service outlets, all having the necessary specialist equipment and high levels of skills required to look after your car.

Within each specialist service outlet we have introduced a new team member. Licensed Technicians meet the highest standards within their field for professionalism, skill and knowledge. Our aim is to make buying and looking after your car more enjoyable.

When it comes to servicing, we appreciate that it may be more convenient for us to visit you. So, whether you're at home or the office, one quick and easy phone call is all it takes to arrange for a convenient collection and delivery.

Naturally, we'll provide you with a replacement Volkswagen and we have also set up a dedicated telephone line for Touareg owners. Our Luxury Car Support Centre is open six days a week, and is a single point of contact for Touareg owners.

## COMPREHENSIVE COVER FROM VOLKSWAGEN ASSISTANCE.

As a Touareg owner, your vehicle will be covered for three years\* by the excellent support service of Volkswagen Assistance. This is a 24 hour, 365 days a year pan-European emergency home and roadside recovery service manned by professional multilingual staff. It's not just there for the unlikely event of a breakdown, Volkswagen Assistance can ease the uncertainty following an accident or the inconvenience should you run out of fuel or lose your keys. You will benefit from a priority response following your call and Volkswagen Assistance aims to provide a replacement car if necessary within two hours of the requirement being identified. Volkswagen Assistance provides many benefits and complete peace of mind.

For example, should you be in the unfortunate situation of a breakdown, we'll arrange overnight accommodation or onward travel for you and your passengers. In addition, if required there's an Accident Management Service to help you through the particularly stressful time following an accident.

Terms and conditions apply. Please see your authorised Volkswagen luxury car specialist retailer or repairer for details and brochure.

\* From date of first registration.



## VOLKSWAGEN SERVICE FOR YOUR PEACE OF MIND.

### The Volkswagen Warranty. Three-year Warranty.

All Volkswagen Touaregs come with a three-year/60,000 miles warranty, which protects your car against the failure of most mechanical and electrical components due to manufacturing defects. This comprises a two-year manufacturer's warranty with unlimited mileage plus a further one-year/60,000 miles (whichever is soonest) Retailer Warranty. Should the mileage exceed 60,000 miles within the first two years, the manufacturer's two-year warranty will still be valid. If an additional warranty for subsequent years or higher mileage is desired, it may be purchased from any authorised Volkswagen luxury car specialist retailer; however, this additional warranty must be purchased before the mileage reaches 60,000\*. Full details of the three-year warranty are available from your authorised Volkswagen luxury car specialist retailer. This three-year warranty is only available on vehicles purchased in the UK through an authorised Volkswagen luxury car specialist retailer.

\* All warranty work must be completed by an authorised Volkswagen luxury car specialist retailer or repairer.

**Three-year Paint Warranty.** The paintwork of the Touareg is covered against manufacturing defects for a period of three years. Naturally, the Touareg must be cared for in compliance with the operating instructions which will be found in your vehicle handbook. Please consult your authorised Volkswagen luxury car specialist retailer or repairer for full warranty details.

**12-year Body Protection Warranty.** The internal body sections and panels of the Touareg are covered against rusting through from the inside for a period of 12 years. Naturally, the Touareg must be cared for in compliance with the operating instructions. Please consult your authorised Volkswagen luxury car specialist retailer or repairer for full warranty details.

**Service Intervals.** Volkswagen has always been dedicated to protecting the environment. That's why all Touaregs come with a LongLife Service regime. As a result of longer service intervals the engine oil requirement can be significantly reduced over the vehicle's total life, which results in less waste oil to dispose of and reduces the burden on the environment.

The LongLife Service regime is so called because there are no set service intervals. The interval between services, depending on how you drive your vehicle and the conditions of use, can be anywhere from 9,000 miles or 12 months (whichever is soonest), up to a maximum of 20,000 miles\* or 24 months (whichever is soonest). The Service Interval Display in the instrument panel will indicate when a service is required.

This LongLife Service regime has been made possible due to the development of new Volkswagen engines with the latest technically advanced long-life oils. These engines use built-in sensors that continually monitor the oil quality, making it possible to enjoy reliable and confident motoring for up to a maximum of 20,000 miles\* or 24 months (whichever is soonest).

If you would like a more traditional service regime the Touareg can be adapted by your authorised Volkswagen luxury car specialist retailer or repairer to the Time/Distance regime. This can be done at the point of vehicle sale or when an inspection service is carried out.

\* All mileages are approximate as the system uses kilometres as the distance measure.

Please consult your authorised Volkswagen luxury car specialist retailer or repairer for full details.

**Approved Accessories.** A comprehensive range of accessories from alloy wheels to carpet mats is available to complement the factory-fitted option list. Volkswagen Approved accessories purchased from and fitted by your authorised Volkswagen luxury car specialist retailer at the point of vehicle sale will also benefit from the three-year vehicle warranty.

**Maximum Peace Of Mind.** To ensure you are effectively insured, Volkswagen Insurance (the trading name of Volkswagen Insurance Services Limited) offers policies developed specifically for Volkswagen drivers. The main benefit of being covered by one of the UK's largest manufacturer-approved insurance schemes is the complete peace of mind it provides. For example, should your Touareg require repair, we guarantee it will only be completed by an authorised specialist Volkswagen retailer or repairer.

**Approved Used Cars.** Confidence, peace of mind, reassurance. These are the virtues of buying an Approved Used car because every car has, or is supported by:

- Multipoint inspection
- Comprehensive reconditioning and valeting
- Mileage verification
- Vehicle validation check
- Volkswagen Approved Warranty
- Volkswagen Assistance†
- 30-day/1,000 miles exchange policy‡

† Cars up to three years old are covered by Volkswagen Assistance.

This can be purchased separately for cars over three years old.

‡ Terms and conditions apply, please ask for full details.

And for Approved Used Volkswagens, a service history check and certificate are also provided. When it comes to buying a used car, it's important that you can be confident in its mechanical condition, mileage and history. The Volkswagen Approved Used scheme should help put your mind at ease. Every Approved Used car for sale will have passed a rigorous inspection, and any problems found will have been rectified before the car is made ready for sale. For your extra peace of mind, it will be covered by a 12-month warranty and a 30-day/1,000 miles exchange policy.

**Personal Finance Solutions.** We appreciate that financial needs differ, so you'll find a team of professional advisors on hand at our specialist retailers. They will be able to offer you cost-effective, tried and trusted financial products including a range of products for both private and business consumers alike, from Volkswagen Finance\*.

\* Volkswagen Finance is a trading name of Volkswagen Financial Services (UK) Limited.

**CO<sub>2</sub> Emission.** The weight of a vehicle will influence the level of CO<sub>2</sub> emission it produces; as a result, vehicles with higher levels of specification and factory-fitted options may emit higher levels of CO<sub>2</sub>.

The CO<sub>2</sub> figure quoted for each vehicle is the maximum possible. The unladen weight of the vehicle is calculated by range at the time of manufacture and the maximum possible CO<sub>2</sub> emission for that weight range is applied according to the Council Directive 80/1268EEC as amended by Commission Directive 1999/100/EC on the approximation of the laws of the member states relating to the carbon dioxide emissions and the fuel consumption of motor vehicles.

**Please Note:** Some illustrations in this brochure do not necessarily reflect UK specifications and may not be available. In particular, controls and some items of equipment are positioned differently for the UK.

The specifications contained in this brochure are for information purposes only and are subject to change. If you require any specific feature, you must consult your authorised Volkswagen luxury car specialist retailer who is regularly updated with any change in specification. Please check model availability and full specification details with your authorised Volkswagen luxury car specialist retailer prior to ordering.

Note: We would like to advise you that telephone calls to the Luxury car support centre may be monitored and recorded as part of our training and quality assurance processes. All our monitoring and recording processes meet Ofcom regulations.

PVW238TRG  
PRINTED IN ENGLAND. ISSUE: 1 JANUARY 2007  
[WWW.VOLKSWAGEN.CO.UK](http://WWW.VOLKSWAGEN.CO.UK)  
TELEPHONE 0800 037 7888

The illustrations in this book do not necessarily reflect UK specifications and some items of equipment may not be available for the UK. The specifications contained in this book are for information purposes only as we cannot confirm the exact specifications of the vehicles.

4XMOTION is a registered trademark of Volkswagen AG.