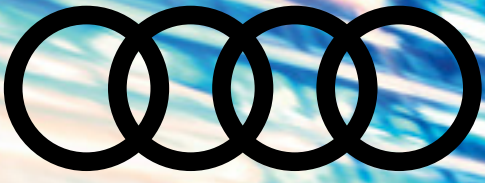


2019



Q8





**Balance.
It's about time.**

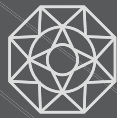


ALLURE



NETWORK

A new icon takes shape.



STRENGTH




DISTINCTION

All-new Audi Q8

This isn't the all-new 2019 Audi Q8: it's just a photograph. It can give you a picture of the distinctive design, a graphic representation of how the light hits the pigment in the paint. It can show you two dimensions of balanced SUV coupe proportions that many have tried, but none have succeeded in building until now. But as for the powerful potential and practicality of the Q8, that is for you to discover in person.





The size and shape of the D-pillar evokes memories of race-winning quattro® competition cars.

The flare of the fender starts midway on the rear door and extends to integrate elegantly with the rear liftgate.

Beneath the subtle mid-section crease, the bodywork tapers inward to add sculpture to the torso.

LED headlights flow into a swell in the upper fender line, taking inspiration from the original Quattro coupe.

Drawing our heritage and our destiny into the present.

Some understand what we call the present moment to last less than half a second, so how do we design a contemporary vehicle to keep up? With the all-new 2019 Audi Q8, we started with our past, outlining our all-wheel drive pedigree in dramatic wheel arches inspired by the Ur-Quattro vehicle that made the Audi marque a rally legend. Then we drew in elements from our future. The striking surface tension in the sheet metal emanates potential, mingled with the sloping roofline of Audi vehicles from the past. Taken together, our past and future compose this exact moment, embodied in the Q8.



The future has a new face.

The Audi Singleframe® grille has come a long way since its origins in the Auto Union Silver Arrow racing car, the first vehicle to wear the Four Rings. But the face of the all-new Audi Q8 has more to do with the future than the past. A sculpted octagonal grille and vertical struts articulate the vehicle's width and capability. Massive air intakes accompany the vehicle's stark countenance and give the design room to breathe. The available S line® exterior that accompanies the exclusive Year One package offers a Black-optic mask grille surround as an alternative to the standard body color for the grille surround, for your choice of modern interpretations on the classic design.



Keeping current can be enlightening.

Illuminating features like available HD Matrix-design LED headlights don't just sound modern, they define the leading edge of lighting technology available today. Beyond brightening the road, the lighting of the all-new Audi Q8 tells a story. A single band of LED light stretched across the rear of the Q8 emphasizes its Ur-Quattro design heritage and the future of automotive illumination at once. The available dynamic daytime running lights animate to greet you when you approach the vehicle and say goodbye when you walk away. Dynamic indicators actively tell other drivers your intentions. Taken together, true purpose of the Q8 lighting design is to start an enlightening conversation.



A single line can tell the entire story.

Dynamic turn indicators

When the driver signals their intent to change lanes, the dynamic turn indicators illuminate from the inside out to help create awareness for drivers following the Audi Q8.

The image shows the driver's perspective from the cockpit of a 2019 Audi Q8 Prestige. The steering wheel is leather-wrapped with the Audi logo in the center and silver accents. The instrument cluster behind the wheel is a digital display showing the date 2/9/2018, the Audi logo, and gear selection 'P'. The dashboard is a wide, horizontal screen displaying various vehicle functions like RADIO, MEDIA, TELEPHONE, MESSAGING, NAVIGATION, AIR VEHICLE, SETTINGS, and PHONE APPS. The center console features a large touch screen for climate control, showing temperatures of 68°F and 72°F, and two touch-sensitive gear selector buttons. The interior is finished with dark leather and wood inlays.

Outpace the information age from within.

From the cockpit of the all-new Audi Q8, the future is clear. The elegant three-dimensional architecture of the interior arranges information in a driver-oriented design to imbue every drive with the confidence of knowing. Beyond the all-new MMI® touch response system with dual center displays and haptic touch feedback and the flowing width of the dash,¹ there is an enduring truth in the way the interior complements the exterior, and in authentic touches like natural wood inlays.

2019 Audi Q8 Prestige shown with Sarder Brown leather and available equipment.

¹ Always pay careful attention to the road, and do not drive while distracted. See Owner's Manual for further details and important limitations.



The image shows the interior of a 2019 Audi Q8 Prestige. The view is from the passenger side looking towards the driver's seat. The front seats are upholstered in a dark, textured leather with a perforated pattern. The center console has a gear shifter and handbrake. The dashboard and steering wheel are visible in the background. The car is parked in a city street, with a building and two people visible through the window.

A place of quiet confidence is always with you.

While other drivers will undoubtedly take notice of the all-new Audi Q8 on the road, we built it for you. Features like available 18-way ventilated Valcona leather front seats aren't just for comfort—they promote a state of ease, an engaged posture from which the driver is free to discover the joy of the drive. The rear seats slide and recline to help bring this quality to your passengers too, and with a cargo capacity of up to 60.7 square feet, the Q8 proves that confidence truly starts within.



A new way to take control of the present.

Audi engineers have been developing engines for over a century, and we've distilled everything in our past into a dynamic present in the all-new Audi Q8. A turbocharged V6 coupled with an adaptive damping suspension or the available Audi adaptive air suspension makes your right foot a true expression of your will. And with six available driving modes at hand through the Audi drive select to deliver the best options for the driving situation, along with a 7,700-lb towing capacity, the Q8 helps give you control to not just react to the present but to drive what happens next.¹

Q8 335 hp/369 lb-ft

The all-new 3.0-liter TFSI® V6 engine was engineered to deliver powerful response in a smooth, refined manner. A twin-scroll turbocharger and Audi valvelift system help provide up to 369 lb-ft of torque from 1,370–4,500 rpm. With this broad powerband, the Audi Q8 can accelerate from 0–60 mph in 5.6 seconds and make progress feel effortless.

quattro® all-wheel drive

The innovation of quattro® all-wheel drive has helped Audi win races all over the world, but it's not just a performance-enhancing technology: It has also become a foul-weather friend. quattro® helps optimize traction as conditions become more challenging, which translates to a more confident driving experience. On the all-new Audi Q8, standard quattro® all-wheel drive does more than help give it optimal grip—it's a part of an enduring legacy of driving performance.

Adaptive damping suspension and all-wheel steering system

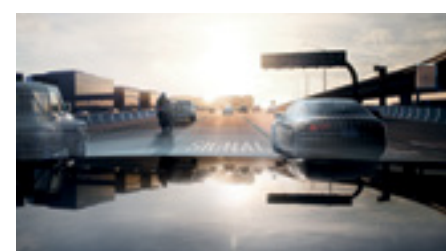
The standard Adaptive damping suspension on the Audi Q8 adjusts shock absorber pressure to help provide a smooth ride and enhance dynamic response in the turns. And with the available Adaptive Chassis package, all-wheel steering can reduce the turning radius at low speeds and enhance vehicle stability on the highway, the Q8 reaches a new level of ride comfort and handling control.

There's a beauty to intelligence that looks can't achieve.

Knowledge may be power, but its application is most important. By linking an array of sensors and cameras to a central driver assistance controller capable of up to 741 billion computations per second, the driver assistance features in the Audi Q8 reached a new level of sophistication. These systems were engineered to help alert you to an impending event, acting like an extra pair of eyes, or assisting during traffic congestion. By gathering data and turning it into greater awareness, you may like the Q8 more for its brains than its looks.¹

A picture forms

Data gathered from front- and rear-mounted cameras, sonar and radar sensors, an infrared camera and a LIDAR laser scanner are sent to the central driver's assistance controller. Then that controller combines the data to form a picture of the vehicle's surroundings. This is an actual image created by Audi driver assistance systems.



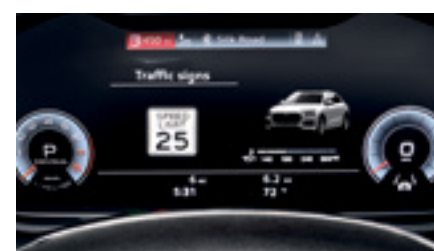
Audi adaptive cruise assist

Comprising both Audi adaptive cruise control and Audi active lane assist, available Audi adaptive cruise assist helps the driver accelerate, brake and maintain speed and distance as well as stay in the lane in traffic or at high speeds.¹



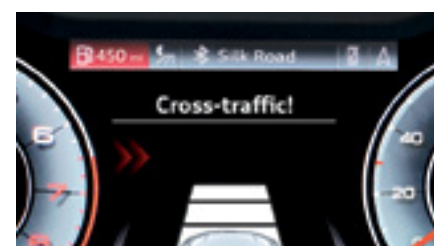
Top view camera system with Virtual 360 view

Using four cameras placed throughout the Audi Q8, the available Top view camera system with Virtual 360 view displays the vehicle and its surroundings on the top MMI® touch response screen.² The driver can select an area of the car and zoom in to see objects or obstructions surrounding the vehicle.¹



Traffic sign recognition

Traffic signs indicating speed limits, no passing zones and school zones are displayed on the Audi virtual cockpit or available head-up display to help raise awareness. The system displays the current speed limit, and the driver can program a warning threshold when speed limits are exceeded.¹



Intersection assist

The front-side mounted radars monitor the surroundings while the vehicle is at an intersection. The available system sends visual and audible warnings to alert the driver and passengers of an approaching vehicle detected, and it can apply a warning brake jolt if the driver doesn't respond while pulling slowly through an intersection.¹

¹ Driver Assistance features are not substitutes for attentive driving. Please see your Owner's Manual for further details and important limitations.

² Always pay careful attention to the road, and do not drive while distracted. See Owner's Manual for further details and important limitations.

The human-machine bond just got stronger.

With the myAudi app and Audi connect® working together,¹⁶ you can experience an expanded level of integration and a suite of convenience features. In addition to your music, contacts and emails, myAudi can transfer points of interests into navigated route guidance, be used to lock or unlock your doors or help you find your car in a crowded parking lot with your compatible device. So even when you are away from your vehicle, it can feel nearby.¹⁸

myAudi Navigation

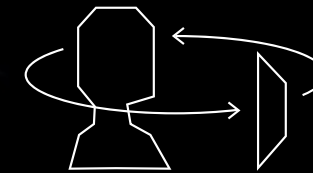
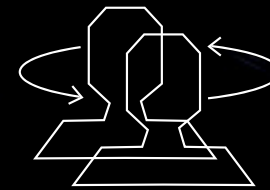
myAudi Navigation is engineered to integrate with the MMI® Navigation system and to store your favorite and recent routes. Route guidance considers current and predicted traffic conditions, and it can offer alternative routes when traffic congestion is detected.^{1,16,17}

Amazon Music

Get unlimited access to millions of songs. Visit amazon.com/myaudi to sign up and stream through your MMI® display. Simply link the myAudi app to your Amazon account and start listening.^{16,17}

Yelp® Review Highlights

Find out what the buzz is about. Yelp® Review Highlights gathers frequently used descriptions and phrases from customer reviews to help give you a quick picture of the business and its services.^{4,16,17}



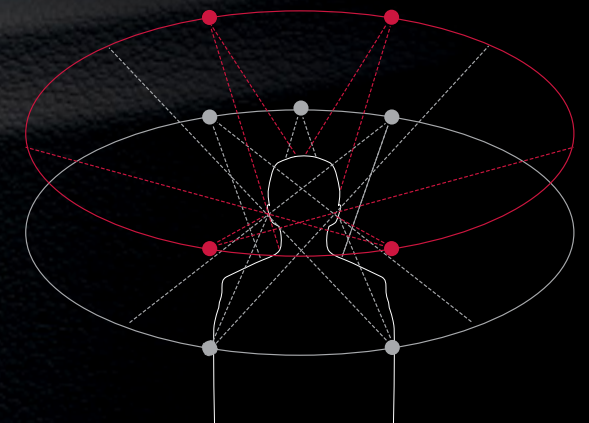
Just like we respond to people with visual and audible affirmation, MMI® touch response reacts with haptic and audible confirmation to your input.²

Natural sound to keep you in the moment.

You may want true-to-life sound. You may want wide-ranging depth and the feeling of being encircled by music from three dimensions. Then you may want to listen to what Bang & Olufsen® has to offer. The available Bang & Olufsen® 3D Premium Sound System features 17 speakers, a 16-channel amplifier and 730 watts of power, and the available 3D Advanced Sound System is equipped with 23 speakers, a 23-channel BeoCore® amplifier and ICEpower® amplifiers for a total of 1,920 watts of power. The speakers are placed strategically throughout the interior to help create the feeling of a live performance. Both Bang & Olufsen® systems were engineered to help music scale new heights.

Full 3D surround experience

By placing speakers above the listener, Bang & Olufsen® brought a sense of height to sound reproduction. A post-processor transforms the audio signals to give them a more spatial, third-dimensional quality.



Purist design is a classic concept that's always new.



Exclusively available in the first year of its production, the all-new Audi Q8 defines a unique identity with an available Year One package. Black-optic exterior touches combine with an S line® exterior to emphasize a gently sloping SUV silhouette. Complete with 22" Audi Sport® wheels—the biggest production wheel Audi has ever offered—along with Red brake calipers¹ and a Black mask grille surround, the Year One package celebrates the intrepid souls who understand the enduring quality of remaining at the forefront of design.

2019 Audi Q8 Premium Plus shown in Navarra Blue metallic with available Year One package.



¹ Red brake calipers not available with Dragon Orange and Galaxy Blue exterior.



A



B



C



D



E



F

- A. Available HD Matrix-design LED headlights** | Advanced LED lighting technology and creative design give function artistic form.
- B. Audi virtual cockpit** | Choose from Classic or Infotainment viewing modes through the 12.3-inch high-resolution screen.
- C. Available heated steering wheel** | Add a warm touch on cold mornings with the available heated steering wheel.
- D. Available Valcona leather** | Our most luxurious leather is treated to be soft to the touch, and is available in several colors.
- E. Up to 60.7 cu ft of cargo room** | Versatility rises when you fold down the rear seats. An adjustable luggage divider can help keep your cargo organized and an automatic cargo cover helps keep your possessions out of sight.
- F. Available Ambient LED Interior Lighting package plus** | Change the mood by selecting from a palette of colors.
- G. Available 18-way individual contour front seats** | Myriad positioning options help you drive comfortably and achieve an ideal ergonomic driving position.



G



See how the Audi Q8 has raised the standards of styling and performance.

Visit:

<https://www.audiusa.com/models/audi-q8>

A little personalization is fitting.

Make your preferences a reflection of your sense of style. Audi Genuine Accessories are engineered to fit your Audi Q8 with the same commitment to quality and functionality you expect from Audi. Choose from protective floor mats or a car cover, or add capacity with a ski and luggage carrier. Audi Genuine Accessories make it easy to put your signature on your new Audi Q8.



A. Ski and luggage carrier¹

Ride in comfort when luggage and sports equipment are stowed in this stylish, aerodynamic carrier. 14.3-cu-ft capacity. Silver shown. Also available in Black. Size: 83.9" long x 34.3" wide x 15.7" high.



B. All-weather floor mats²

The all-weather floor mats feature a deep-ribbed, channeled design that helps protect your vehicle's floor and carpeting from the elements. Black mats are available in sets of two for front or rear. Front mats feature your vehicle's logo.



C. Q8 vehicle cover

A lightweight, easy-to-use cover helps protect your vehicle's finish. Intended for indoor use only. Storage bag included.

Visit audi.us/accessories for more.

¹ Proper installation required. See dealer for details. All roof-rack system attachments require the base carrier bars. All accessories sold separately. Recreational equipment and sporting equipment not included. ² Proper installation required. Professional installation recommended. See your authorized Audi dealer for details.



Don't go without inspiration.

A

B



C

A. Audi active wear

For you, the fun begins when you break a sweat. The Audi collection of active wear is designed to keep you warm when it's chilly, dry when it rains or help shade your eyes on sunny days. Available in several styles and colors, these active life items are made to put in the extra miles.

B. Under Armour® SideLine cap

The high-quality structured construction helps this cap keep its shape, while the stretch material provides a comfortable fit. The Audi rings logo shows you're driven by great design.

C. Game set

Take the game along with you. This game set features chess, backgammon, cribbage, dominoes and a deck of playing cards. Featuring a carbon fiber and mother-of-pearl interior panel plus a black protective outer case with contrast stitching, it looks great in your home or office.



D

D. Men's Audi Sport® pullover

Ethically sourced and produced, this pullover jacket features the Audi Sport® logo and comes with everything you need to stay on the move.

E. Wool duffel bags

Your items will travel in style with these two wool duffel bags. Combining the classic feel of premium wool with genuine leather, both bags feature adjustable-length carrying straps that can be detached, plus zippered storage pockets for smaller items.

F. Ladies' Draussen long-sleeve tee

A gently contoured hem balances a subtly scooped neckline for a modest, everyday look. Fine French terry fabric is so stretchy and soft that you might want to wear it every day.



E



F

Visit audi.us/collection for more.

Q8 Premium Featured Highlights | Packages and Options



2019 Audi Q8 Premium shown in Samurai Gray metallic.

Infotainment/Technology

<ul style="list-style-type: none"> > Audi virtual cockpit (12.3" LCD digital instrument cluster with two visual modes: Classic and Infotainment) > MMI® Navigation plus with natural voice control system¹ 	<ul style="list-style-type: none"> > MMI® touch response with dual center displays and haptic feedback² > Audi connect® CARE with limited-time subscription³ > Audi connect® PRIME and PLUS with six-month trial subscription^{4,5} 	<ul style="list-style-type: none"> > Audi music interface front and rear and Audi smartphone interface including Apple CarPlay® and Android Auto™ for compatible devices⁶ > Audi sound system with ten speakers > HD Radio™ Technology 	<ul style="list-style-type: none"> > SiriusXM® with 90-day trial subscription⁷ > BLUETOOTH® streaming audio for compatible devices > Garage door opener (HomeLink®)
---	---	---	--

Driver assistance/Innovation

<ul style="list-style-type: none"> > Audi pre sense® basic and front⁸ > Cruise control with coast, resume and accelerator features⁸ 	<ul style="list-style-type: none"> > Audi advanced key—keyless start, stop and entry with hands-free tailgate release⁹ 	<ul style="list-style-type: none"> > Audi drive select > Parking system plus⁸ (front and rear acoustic sensors) 	<ul style="list-style-type: none"> > Rain/light sensor for automatic windshield wipers and headlights
---	---	--	---

Exterior

<ul style="list-style-type: none"> > 20" 5-arm design, silver finish wheels > Singleframe® grille with body-colored mask > Full LED headlights > LED taillights with dynamic turn indicators 	<ul style="list-style-type: none"> > Power adjustable, power-folding, heated exterior side mirrors with memory > LED turn indicators integrated into the exterior side mirror housings 	<ul style="list-style-type: none"> > Aluminum-optic trim around exterior side windows > Aluminum-optic roof rails > Rear privacy glass 	<ul style="list-style-type: none"> > Power tailgate > Tailgate roof spoiler > Anti-theft alarm system with immobilizer
--	--	--	--

Interior

<ul style="list-style-type: none"> > Panoramic sunroof with power sunshade > Three-zone automatic climate control > Three-spoke multifunction steering wheel with shift paddles > Power tilt and telescopic adjustable steering column with memory > Gray/Brown Fine Grain Ash Natural Wood inlays 	<ul style="list-style-type: none"> > Auto-dimming rear view mirror with digital compass > Driver and front-passenger extendable sun visors with illuminated vanity mirrors > Ambient Interior Lighting package 	<ul style="list-style-type: none"> > Leather seating surfaces > Heated eight-way power front seats and four-way power lumbar adjustment for driver > Driver's seat memory 	<ul style="list-style-type: none"> > Comfort front armrest > Sliding, split-folding 40/20/40 rear seatbacks with adjustable recline > Aluminum door sill inlays > Stainless steel trunk sill
--	--	---	--

Safety

<ul style="list-style-type: none"> > Advanced Airbag Protection System with 6 airbags¹⁰ 	<ul style="list-style-type: none"> > Lower Anchors and Tethers for Children (LATCH) in rear seats > Power central locking system with safety unlock feature if airbags deploy¹⁰ 	<ul style="list-style-type: none"> > Electronic Stability Control (ESC) with Offroad mode,¹¹ secondary collision brake assist and traction control (ASR) > Anti-lock Brake System (ABS) with Electronic Brake-pressure Distribution (EBD) and brake assist 	<ul style="list-style-type: none"> > Tire-pressure monitoring system > Electromechanical parking brake > Rear view camera
--	--	---	---

Packages

Cold Weather package <ul style="list-style-type: none"> > Heated three-spoke multifunction steering wheel with shift paddles > Heated rear seats 	21" Wheel package <ul style="list-style-type: none"> > 21" 5-segment-spoke-W design wheels > 285/45 all-season tires 	Convenience package <ul style="list-style-type: none"> > Audi side assist and Audi pre sense® rear⁸ <ul style="list-style-type: none"> - with Rear cross traffic assist⁸ - with Vehicle exit warning⁸ > Auto-dimming, power-folding, heated exterior side mirrors with memory > Audi phone box¹³ (signal booster and wireless charger)
---	---	--

Stand-alone options

<ul style="list-style-type: none"> > Black cloth headliner > Thorax rear side airbags¹⁰ 	<ul style="list-style-type: none"> > Trailer hitch provision for 7,700 lb capacity¹⁴ 	<ul style="list-style-type: none"> > High-gloss Gray Oak Wood inlays > Lava Brown Eucalyptus Natural Wood inlays 	<ul style="list-style-type: none"> > CD/DVD player
--	---	--	--

1 Audi Navigation plus depends on signals from the worldwide Global Positioning Satellite network. The vehicle's electrical system, and existing wireless and satellite technologies, must be available and operating properly for the system to function. The system is designed to provide you with suggested routes in locating addresses, destinations and other points of interest. Changes in street names, construction zones, traffic flow, points of interest and other road system changes are beyond the control of Audi of America, Inc. Complete detailed mapping of lanes, roads, streets, toll roads, highways, etc., is not possible, therefore you may encounter discrepancies between the mapping and your actual location. Please rely on your individual judgment in determining whether or not to follow a suggested Audi Navigation plus route. 2 Always pay careful attention to the road, and do not drive while distracted. See Owner's Manual for further details and important limitations. 3 Always pay careful attention to the road, and do not drive while distracted. Connect CARE services are provided with the support of authorized affiliated and third-party service providers. Available on select models. Connect CARE services are activated prior to purchase or lease and do not require registration or paid subscription. Connect CARE services require vehicle cellular connectivity and availability of vehicle GPS signal; certain services collect location information. See Terms of Service for information about how to disable. Connect CARE services are subject to technologies remaining commercially available, and such service is not guaranteed and may not be available after December 2021. See Terms of Service, Privacy Policy and other details at www.audiusa.com/privacy and www.audiusa.com/technology/intelligence/audi-connect/connect-terms. Connect CARE services should be used only when it is safe and appropriate. 4 Always pay careful attention to the road, and do not drive while distracted. Connect PRIME services are optional, may require an additional subscription with separate terms and conditions, and should be used only when it is safe and appropriate. Trial or paid subscription required. Connect PRIME services require vehicle cellular connectivity and availability of vehicle GPS signal; certain services collect location information. See Terms of Service for information about how to disable. Online services are subject to change at any time. See Terms of Service, Privacy Policy and other details at www.audiusa.com/privacy and www.audiusa.com/technology/intelligence/audi-connect/connect-terms. 5 Always pay careful attention to the road, and do not drive while distracted. The Wi-Fi® hotspot feature is intended for passenger use only. 4G LTE coverage is not available in all areas. Wi-Fi® feature is provided through Connect PLUS. Connect PLUS features and technologies are optional, may require an additional subscription with separate terms and conditions, and should be used only when it is safe and appropriate. See materials provided by wireless carrier for terms, privacy, data security details. Returning devices connect automatically and use plan data unless hotspot is removed from device settings. 6 Always pay careful attention to the road, and do not drive while distracted. Not all features available on all operating systems. Message and data rates apply. These features require compatible device, operating system and mobile apps. See mobile device and app providers for terms and privacy. "Android," "Android Auto," "Google Play" and other marks are trademarks of Google Inc. "Apple CarPlay" is a registered trademark of Apple Inc. 7 SiriusXM® and SiriusXM® Traffic subscriptions are sold separately or as a package after trial period and are continuous until you call SiriusXM® to cancel. See Customer Agreement for complete terms and

more information at www.siriusxm.com. SiriusXM® Traffic service available in select markets. SiriusXM® U.S. Satellite Service available only to those in the 48 contiguous U.S.A., D.C. and Puerto Rico (with coverage limitations). 8 Driver Assistance features are not substitutes for attentive driving. Please see your Owner's Manual for further details and important limitations. 9 See Owner's Manual for further details and important warnings about the keyless ignition feature. Do not leave vehicle unattended with the engine running, particularly in enclosed spaces. 10 Airbags are supplemental restraints only and will not deploy in all crash circumstances. Always use safety belts and seat children only in the rear, using restraint systems appropriate for their size and age. 11 Always ensure that your vehicle is equipped with appropriate tires and equipment, and always adjust your speed and driving style to the road, terrain, traffic and weather conditions. See Owner's Manual for further details and important limitations. 12 These tires may ride less comfortably, make more noise, and wear more quickly than other choices. To avoid tire, rim or vehicle damage, it is important that inflation pressure is regularly checked and maintained at optimum levels. Tires are supplied and warranted by their manufacturer. 13 Requires compatible smart device. This is a CONSUMER device. BEFORE USE, you MUST REGISTER THIS DEVICE with your wireless provider and have your provider's consent. Most wireless providers consent to the use of signal boosters. Some providers may not consent to the use of this device on their network. If you are unsure, contact your provider. You MUST operate this device with approved antennas and cables as specified by the manufacturer. Antennas MUST be installed at least 20 cm (8 inches) from any person. You MUST cease operating this device immediately if requested by the FCC or a licensed wireless service provider. WARNING: E911 location information may not be provided or may be inaccurate for calls serviced by using this device. 14 Maximum tow rating when properly equipped with towing accessories. Vehicle load, other accessories and options may reduce maximum towing capacity. See vehicle owner's manual for details. 15 These tires may ride less comfortably, make more noise, and wear more quickly than other choices. To avoid tire, rim or vehicle damage, it is important that inflation pressure is regularly checked and maintained at optimum levels. High-performance tires are designed for optimum performance and handling in warm climates and are not suitable for cold, snowy or icy weather conditions. When driving during cold, snowy or icy weather conditions, ensure that your vehicle is equipped with appropriate all-season or winter weather tires. Tires are supplied and warranted by their manufacturer. 16 Always pay careful attention to the road, and do not drive while distracted. Audi connect® should be used only when it is safe and appropriate. Audi connect® services and features are optional, provided with the support of authorized affiliated and third-party service providers, and may require additional subscriptions with separate terms and conditions. Available on select models. Certain services collect location information; see Terms of Service for information about how to disable and for other details. Connect services are subject to technologies remaining commercially available; such services are not guaranteed and may not be available after 2021 for equipped MY17-20 vehicles. 17 Required compatible device. 18 Required myAudi app. Message and data rates apply. Do not use feature to locate stolen vehicle.

Q8 Premium Plus Featured Highlights | Packages and Options



2019 Audi Q8 Premium Plus shown in Florett Silver metallic.

Infotainment/Technology

- > Audi virtual cockpit (12.3" LCD digital instrument cluster with two visual modes: Classic and Infotainment)
- > MMI® Navigation plus with natural voice control system¹
- > MMI® touch response with dual center displays and haptic feedback²
- > Audi connect® CARE with limited-time subscription³
- > Audi connect® PRIME and PLUS with six-month trial subscription^{4,5}
- > Audi music interface front and rear and Audi smartphone interface including Apple CarPlay® and Android Auto™ for compatible devices⁶
- > Bang & Olufsen® 3D Premium Sound System, 17 speakers, 16-channel amplifier and 730 watts
- > HD Radio™ Technology
- > SiriusXM® with 90-day trial subscription⁷
- > BLUETOOTH® streaming audio for compatible devices
- > Audi phone box^{1,3} (signal booster and wireless charger)
- > Garage door opener (HomeLink®)

Driver assistance/Innovation

- > Audi pre sense® basic and front⁸
- > Audi side assist and Audi pre sense® rear⁸
 - with Rear cross traffic assist⁸
 - with Vehicle exit warning⁸
- > Cruise control with coast, resume and accelerator features⁸
- > High-beam assistant⁸
- > Audi advanced key—keyless start, stop and entry with hands-free tailgate release⁹
- > Audi drive select
- > Parking system plus⁸ (front and rear acoustic sensors)
- > Top view camera with Virtual 360° view
- > Rain/light sensor for automatic windshield wipers and headlights

Exterior

- > 21" 5-segment-spoke-W design wheels
- > Singleframe® grille with body-colored mask
- > Full LED headlights
- > LED taillights with dynamic turn indicators
- > Auto-dimming, power-folding, heated exterior side mirrors with memory
- > LED turn indicators integrated into the exterior side mirror housings
- > Aluminum-optic trim around exterior side windows
- > Aluminum-optic roof rails
- > Rear privacy glass
- > Power tailgate
- > Tailgate roof spoiler
- > Anti-theft alarm system with immobilizer

Interior

- > Panoramic sunroof with power sunshade
- > Four-zone automatic climate control
- > Three-spoke multifunction steering wheel with shift paddles
- > Power tilt and telescopic adjustable steering column with memory
- > Gray/Brown Fine Grain Ash Natural Wood inlays
- > Auto-dimming rear view mirror with digital compass
- > Driver and front-passenger extendable sun visors with illuminated vanity mirrors
- > Ambient Interior Lighting package plus
- > Perforated Leather seating surfaces
- > Heated and ventilated twelve-way power front seats including four-way power lumbar adjustment for driver and front passenger
- > Driver's seat memory
- > Comfort front armrest
- > Sliding, split-folding 40/20/40 rear seatbacks with adjustable recline
- > Illuminated Aluminum door sill inlays
- > Stainless steel trunk sill

Safety

- > Advanced Airbag Protection System with 6 airbags¹⁰
- > Lower Anchors and Tethers for Children (LATCH) in rear seats
- > Power central locking system with safety unlock feature if airbags deploy¹⁰
- > Electronic Stability Control (ESC) with Offroad mode,¹¹ secondary collision brake assist and traction control (ASR)
- > Anti-lock Brake System (ABS) with Electronic Brake-pressure Distribution (EBD) and brake assist
- > Tire-pressure monitoring system
- > Electromechanical parking brake
- > Rear view camera

Packages

- | | | | |
|--|---|---|--|
| <p>Cold Weather package</p> <ul style="list-style-type: none"> > Heated three-spoke multifunction steering wheel with shift paddles > Heated rear seats <p>HD Matrix-design Headlights package</p> <ul style="list-style-type: none"> > HD Matrix-design LED headlights with animation > LED taillights with animation > Headlight washers | <p>22" Wheel package</p> <ul style="list-style-type: none"> > 22" 5-double-arm design, forged and contrasting gray/partially polished finish wheels > 285/40 all-season tires¹² <p>Adaptive Chassis package</p> <ul style="list-style-type: none"> > Audi adaptive air suspension > All-wheel steering | <p>Year One package</p> <ul style="list-style-type: none"> > 22" Audi Sport® 5-V-spoke-star design, high-gloss anthracite black finish wheels > 285/40 all-season tires¹² > Red brake calipers (Not available with Dragon Orange and Galaxy Blue exterior) > Black Singleframe® grille mask > Black-optic exterior trim and roof rails > S line® exterior appearance > S line® fender badges > S line® illuminated door sill inlays | <p>Driver Assistance package</p> <ul style="list-style-type: none"> > Audi adaptive cruise assist⁸ <ul style="list-style-type: none"> - with Traffic jam assist⁸ - with Intersection assist⁸ - with Turn assist⁸ > Audi active lane assist with Emergency assist⁸ > Traffic sign recognition⁸ |
|--|---|---|--|

Stand-alone options

- > Black cloth headliner
- > Thorax rear side airbags¹⁰
- > Trailer hitch provision for 7,700 lb capacity¹⁴
- > High-gloss Gray Oak Wood inlays
- > Lava Brown Eucalyptus Natural Wood inlays
- > CD/DVD player
- > 285/40 summer performance tires¹⁵
- > Red brake calipers (Not available with Dragon Orange and Galaxy Blue exterior)
- > Full Leather package A

1-15 See Q8 Premium Featured Highlights | Packages and Options page for important information regarding: MMI® Navigation plus, MMI® all-in-touch with handwriting-recognition technology, Audi connect® CARE, Audi connect® PRIME, Audi connect® PLUS, Audi smartphone interface, SiriusXM®, Audi pre sense® basic and front, Audi side assist and Audi pre sense® rear with Rear cross traffic assist & Vehicle exit warning, Parking system plus with rear view camera, Audi adaptive cruise control with Traffic jam assist, Turn assist, Collision avoidance assist, Audi active lane assist, High-beam assistant, Parking system plus with top view camera system, Audi phone box, Audi advanced key, airbags, Electronic Stability Control (ESC) with Offroad mode, high-performance tires, Audi phone box, towing and summer performance tires.

Q8 Prestige Featured Highlights | Packages and Options



2019 Audi Q8 Prestige shown in Dragon Orange metallic.

Infotainment/Technology

- > Audi virtual cockpit (12.3" LCD digital instrument cluster with two visual modes: Classic and Infotainment)
- > MMI® Navigation plus with natural voice control system¹
- > MMI® touch response with dual center displays and haptic feedback²
- > Audi connect® CARE with limited-time subscription³
- > Audi connect® PRIME and PLUS with six-month trial subscription^{4,5}
- > Audi music interface front and rear and Audi smartphone interface including Apple CarPlay® and Android Auto™ for compatible devices⁶
- > Bang & Olufsen® 3D Premium Sound System, 17 speakers, 16-channel amplifier and 730 watts
- > HD Radio™ Technology
- > SiriusXM® with 90-day trial subscription⁷
- > BLUETOOTH® streaming audio for compatible devices
- > Audi phone box¹³ (signal booster and wireless charger)
- > Garage door opener (HomeLink®)

Driver assistance/Innovation

- > Audi pre sense® basic and front⁸
- > Audi side assist and Audi pre sense® rear⁸
 - with Rear cross traffic assist⁸
 - with Vehicle exit warning⁸
- > Audi adaptive cruise assist⁸
 - with Traffic jam assist⁸
 - with Intersection assist⁸
 - with Turn assist⁸
- > Audi active lane assist with Emergency assist⁸
- > Traffic sign recognition⁸
- > High-beam assistant⁸
- > Audi advanced key—keyless start, stop and entry with hands-free tailgate release⁹
- > Head-up display with navigation and assistance systems information⁸
- > Audi drive select
- > Parking system plus⁸ (front and rear acoustic sensors)
- > Top view camera with Virtual 360° view
- > Rain/light sensor for automatic windshield wipers and headlights

Exterior

- > 21" 5-segment-spoke-W design wheels
- > Singleframe® grille with body-colored mask
- > HD Matrix-design LED headlights with animation
- > LED taillights with animation
- > Headlight washers
- > Auto-dimming, power-folding, heated exterior side mirrors with memory
- > LED turn indicators integrated into the exterior side mirror housings
- > Aluminum-optic trim around exterior side windows
- > Aluminum-optic roof rails
- > Rear privacy glass
- > Power soft-closing doors
- > Power tailgate
- > Tailgate roof spoiler
- > Anti-theft alarm system with immobilizer

Interior

- > Panoramic sunroof with power sunshade
- > Four-zone automatic climate control
- > Three-spoke multifunction steering wheel with shift paddles
- > Power tilt and telescopic adjustable steering column with memory
- > Gray/Brown Fine Grain Ash Natural Wood inlays
- > Auto-dimming rear view mirror with digital compass
- > Driver and front-passenger extendable sun visors with illuminated vanity mirrors
- > Ambient Interior Lighting package plus
- > Aluminum-optic control buttons
- > Rear side window sunshades
- > Perforated Leather seating surfaces
- > Heated and ventilated twelve-way power front seats including four-way power lumbar adjustment for driver and front passenger
- > Driver's seat memory
- > Comfort front armrest
- > Leather dashboard with contrast stitching
- > Sliding, split-folding 40/20/40 rear seatbacks with adjustable recline
- > Illuminated Aluminum door sill inlays
- > Stainless steel trunk sill

Safety

- > Advanced Airbag Protection System with 6 airbags¹⁰
- > Lower Anchors and Tethers for Children (LATCH) in rear seats
- > Power central locking system with safety unlock feature if airbags deploy¹⁰
- > Electronic Stability Control (ESC) with Offroad mode,¹¹ secondary collision brake assist and traction control (ASR)
- > Anti-lock Brake System (ABS) with Electronic Brake-pressure Distribution (EBD) and brake assist
- > Tire-pressure monitoring system
- > Electromechanical parking brake
- > Rear view camera

Packages

- Cold Weather package**
 - > Heated three-spoke multifunction steering wheel with shift paddles
 - > Heated rear seats
- 22" Wheel package**
 - > 22" 5-double-arm design, forged and contrasting gray/partially polished finish wheels
 - > 285/40 all-season tires¹²
- Year One package**
 - > 22" Audi Sport® 5-V-spoke star design, high-gloss anthracite black finish wheels
 - > 285/40 all-season tires¹²
 - > Red brake calipers (Not available with Dragon Orange and Galaxy Blue exterior)
 - > Black Singleframe® grille mask
 - > Black-optic exterior trim and roof rails
 - > S line® exterior appearance
 - > S line® fender badges
 - > S line® illuminated door sill inlays
- Luxury package**
 - > Valcona Leather seats
 - > Full Leather package
 - > Heated and ventilated 18-way power individual contour comfort front seats including power lumbar adjustment, seat memory and massage functions
 - > Alcantara® headliner
 - > Dual pane acoustic glass
- Adaptive Chassis package**
 - > Audi adaptive air suspension
 - > All-wheel steering
- Design Selection package, Sarder Brown (Requires Luxury package)**
 - > Sarder Brown Valcona leather with Steel Gray contrast stitching and piping
 - > Basalt Gray Eucalyptus Natural Wood inlays

Stand-alone options

- > Black cloth headliner
- > Black Alcantara® headliner
- > Thorax rear side airbags¹⁰
- > Trailer hitch provision for 7,700 lb capacity¹⁴
- > High-gloss Gray Oak Wood inlays
- > Lava Brown Eucalyptus Natural Wood inlays
- > CD/DVD player
- > 285/40 summer performance tires¹⁵
- > Red brake calipers (Not available with Dragon Orange and Galaxy Blue exterior)
- > Full Leather package A
- > Bang & Olufsen® 3D Advanced Sound System with 23 speakers, 23-channel amplifier and 1,920 watts
- > Night vision assistant with large animal and pedestrian detection⁸

1-15 See Q8 Premium Featured Highlights | Packages and Options page for important information regarding: MMI® Navigation plus, MMI® all-in-touch with handwriting-recognition technology, Audi connect® CARE, Audi connect® PRIME, Audi connect® PLUS, Audi smartphone interface, SiriusXM®, Audi pre sense® basic and front, Audi side assist and Audi pre sense® rear with Rear cross traffic assist & Vehicle exit warning, Parking system plus with rear view camera, Audi adaptive cruise control with Traffic jam assist, Turn assist, Collision avoidance assist, Audi active lane assist, High-beam assistant, Parking system plus with top view camera system, Night vision assistant, Audi phone box, Audi advanced key, airbags, Electronic Stability Control (ESC) with Offroad mode, high-performance tires, Audi phone box, towing and summer performance tires.

Technical Specifications

Engineering | Performance

	Q8 Premium	Q8 Premium Plus	Q8 Prestige
Engine type	3.0-liter six-cylinder	3.0-liter six-cylinder	3.0-liter six-cylinder
Engine block/Cylinder head	Aluminum-alloy	Aluminum-alloy	Aluminum-alloy
Displacement (cc)/Bore and stroke (mm)	2,995/84.5 x 89.0	2,995/84.5 x 89.0	2,995/84.5 x 89.0
Horsepower (@ rpm)	335 @ 5,000–6,400	335 @ 5,000–6,400	335 @ 5,000–6,400
Torque (lb-ft @ rpm)	369 @ 1,370–4,500	369 @ 1,370–4,500	369 @ 1,370–4,500
Compression ratio	11.2:1	11.2:1	11.2:1
Valvetrain	24-valve DOHC with Audi valvelift system and variable valve timing	24-valve DOHC with Audi valvelift system and variable valve timing	24-valve DOHC with Audi valvelift system and variable valve timing
Induction/Fuel injection	Turbocharged/TFSI®	Turbocharged/TFSI®	Turbocharged/TFSI®
48-volt Mild Hybrid Electric Vehicle technology with recuperation	■	■	■
Start-stop engine system	■	■	■
Acceleration (0–60 mph)	5.6 seconds ¹	5.6 seconds ¹	5.6 seconds ¹
Top track speed	130 mph ²	130 mph ²	130 mph ²

Transmission | Drivetrain

Eight-speed Tiptronic® automatic transmission and quattro® all-wheel drive	■	■	■
All-wheel steering	—	□	□

Body | Suspension | Chassis

Multi-material body construction (steel and aluminum)	■	■	■
Adaptive damping suspension	■	■	■
Audi adaptive air suspension	—	□	□
Ventilated front disc/Ventilated rear disc brakes (in)	14.8/13.8	14.8/13.8	14.8/13.8
Electromechanical progressive steering system	■	■	■
All-wheel steering	—	□	□
Steering ratio	14.6:1	14.6:1	14.6:1
Turning circle, curb-to-curb (ft)	43.5	43.5	43.5

Exterior measurements

	Q8 Premium	Q8 Premium Plus	Q8 Prestige
Wheelbase (in)	117.9	117.9	117.9
Length (in)	196.6	196.6	196.6
Height (in)	67.2	67.2	67.2
Overall width with mirrors (in)	86.2	86.2	86.2
Overall width without mirrors (in)	78.5	78.5	78.5
Track, front/rear (in)	66.1/66.6	66.1/66.6	66.1/66.6
Curb weight (lb)	5,004	5,004	5,004
Drag coefficient (Cw)	0.35	0.35	0.35
Trailer hitch provision for 7,700-lb maximum towing capacity	□ ³	□ ³	□ ³

Interior measurements

Head room front (in)	37.1	37.1	37.1
Head room rear (in)	38.1	38.1	38.1
Leg room front (in)	41.6	41.6	41.6
Leg room rear (in)	40.2	40.2	40.2
Shoulder room front (in)	59.5	59.5	59.5
Shoulder room rear (in)	58.5	58.5	58.5
Cargo volume, rear seatbacks up/folded (cu ft)	30.5/60.7	30.5/60.7	30.5/60.7
Seating capacity	5	5	5

EPA mileage estimates | Capacities

Fuel Economy (city/highway/combined)	17/22/19 ⁴	17/22/19 ⁴	17/22/19 ⁴
Engine oil (qt)	8.0	8.0	8.0
Fuel (gal)	22.5 ⁵	22.5 ⁵	22.5 ⁵
Minimum fuel grade required	Premium	Premium	Premium

■ Standard □ Optional — Not applicable **NA** Information not available at time of printing

¹ Always obey all speed and traffic laws. ² Top track speed is electronically limited in the U.S. Always obey all speed and traffic laws. ³ Maximum tow rating when properly equipped with towing accessories. Other accessories and options may reduce maximum towing capacity. See vehicle Owner's Manual for details. ⁴ 2019 EPA estimates. Your mileage will vary and depends on several factors, including your driving habits and vehicle condition. See www.fueleconomy.gov for details. ⁵ Never drive until the tank is completely empty. The irregular supply of fuel that results from that can cause engine misfires. Uncombusted fuel will then enter the exhaust system. This can cause overheating and damage to the catalytic converter.

Wheels



20" 5-arm design, silver finish



Standard on Premium

21" 5-segment-spoke-W design



21" Wheel package, Standard on Premium Plus and Prestige

22" 5-double-arm design, forged and contrasting gray/partially polished finish



22" Wheel package

22" Audi Sport® 5-V-spoke-star design, high-gloss anthracite black finish



Year One package

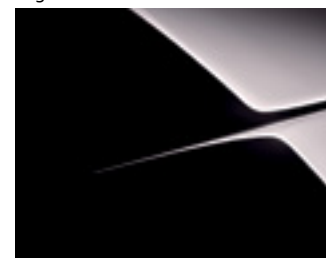
Wheel and tire options will vary based on model, trim level and package and may increase price. See your dealer for details.

Exterior Colors

Carrara White



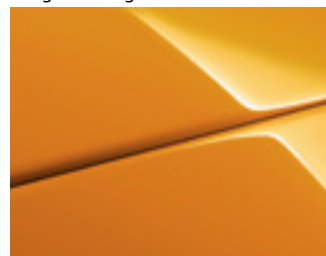
Night Black



Cobra Beige metallic



Dragon Orange metallic¹



Florett Silver metallic



Galaxy Blue metallic¹



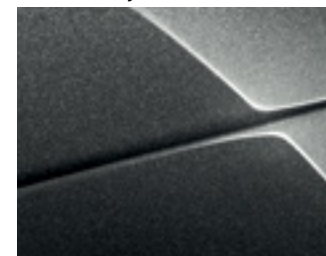
Glacier White metallic



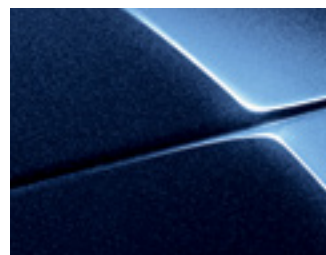
Orca Black metallic



Samurai Gray metallic²

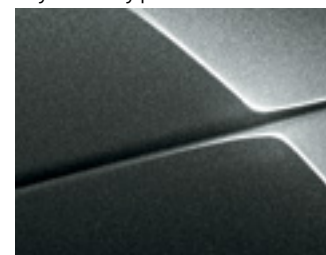


Navarra Blue metallic



Year One package only

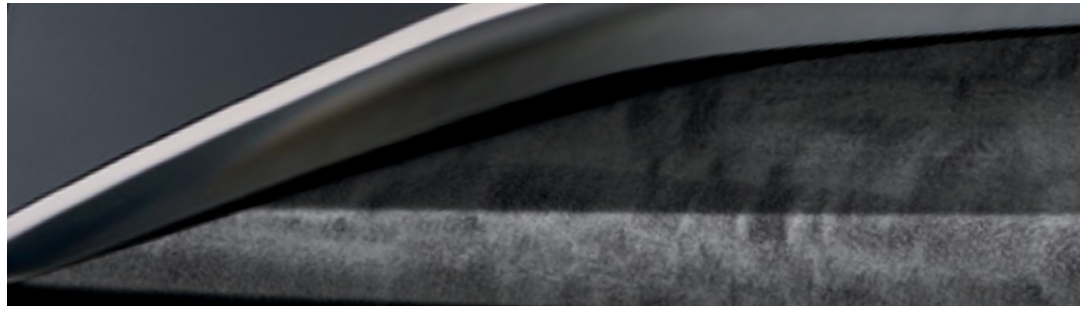
Daytona Gray pearl



Year One package only

¹ Red brake calipers not available with Dragon Orange and Galaxy Blue exterior. ² Not available with Year One package. Exterior color options will vary based on model, trim level and package and may increase price. See your dealer for details.

Interior Inlays



Gray/Brown Fine Grain Ash
Natural Wood inlay



High-gloss Gray Oak Wood inlay



Lava Brown Eucalyptus
Natural Wood inlay



Basalt Gray Eucalyptus
Natural Wood inlay



Design Selection package, Sarder Brown

Interior Colors

Black leather with Rock Gray
contrast stitching



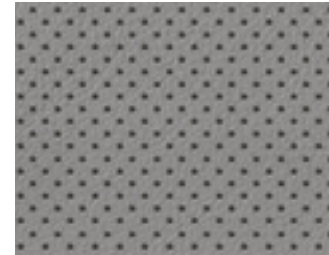
Black Perforated leather with Rock
Gray contrast stitching



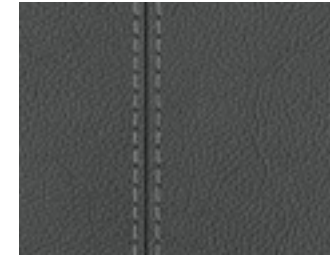
Black Perforated Valcona leather



Metropolitan Gray Perforated
Valcona leather



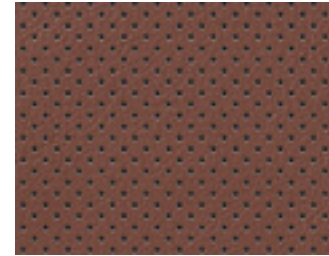
Pando Gray leather with
Rock Gray stitching



Pando Gray Perforated leather with
Rock Gray stitching



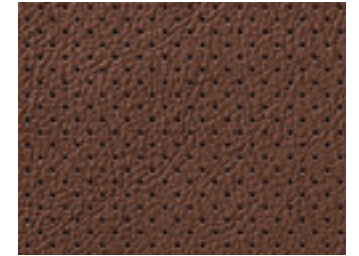
Cedar Brown Perforated
Valcona leather



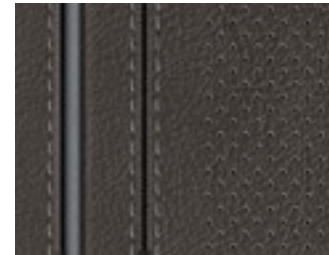
Okapi Brown leather



Okapi Brown Perforated leather

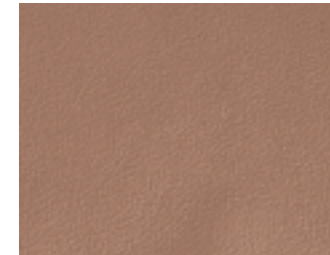


Sarder Brown Perforated Valcona
leather with Steel Gray contrast
stitching and piping

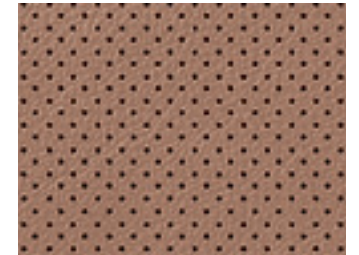


Design Selection package, Sarder Brown

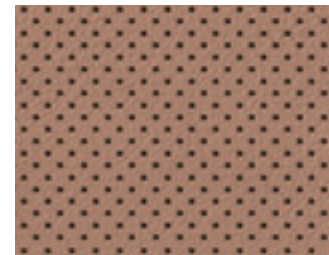
Saiga Beige leather



Saiga Beige Perforated leather



Saiga Beige Perforated
Valcona leather



Q8
2019

Audi of America
Audiusa.com
Facebook.com/Audi

Note: A word about this brochure. Audi of America, Inc., believes the specifications in this brochure to be correct at the time of printing. However, specifications, standard equipment, options, fabrics, and colors are subject to change without notice. Some equipment may be unavailable when your vehicle is built. Please ask your dealer for advice concerning current availability of standard and optional equipment, and your dealer will verify that your vehicle will include the equipment you ordered. Vehicles in this brochure are shown with optional equipment. See your dealer for complete details on the Audi New Vehicle Limited Warranty, twelve-year limited warranty against corrosion perforation, and Audi 24/7 Roadside Assistance. (Roadside assistance coverage provided by Road America in the U.S. Certain conditions apply; see your dealer for details.) Tires supplied by various manufacturers. "Audi," all model names, "Audi connect," "Audi pre sense," "Audi Sport," "MMI," "quattro," "S line," "S tronic," "Sideguard," "Singleframe," "TFSI" and the four rings logo are registered trademarks of AUDI AG. "Amazon," "Amazon Music" and all related logos and motion marks are trademarks of Amazon.com, Inc. or its affiliates. "Apple," "Apple Music," "iPhone" and "Siri" are registered trademarks of Apple Inc. "Apple CarPlay" is a registered trademark of Apple Inc. "Asobu" is a trademark of AD-N-ART Inc. "Bang & Olufsen" is a registered trademark of Bang & Olufsen. The BLUETOOTH word mark and logos are owned by the Bluetooth SIG, Inc., and any use of such marks by AUDI AG is under license. "Google," "Google Earth," "Google Maps," "Google Play," "Google Street View" and "Google Voice Search" are trademarks of Google Inc. © 2017 Google Inc. All rights reserved. "HD Radio" and the HD Radio logo are proprietary trademarks of iBiquity Digital Corporation. "HomeLink" is a registered trademark of Gentex Corporation. "INRIX XD" is a registered trademark of INRIX, Inc. "Rodenstock" is a registered trademark of Rodenstock GmbH LLC. "SiriusXM" and all related marks and logos are trademarks of Sirius XM Inc. and its subsidiaries. "Tiptronic" is a registered trademark of Dr. Ing h.c. F. Porsche AG. "Twitter" is a registered trademark of Twitter, Inc. "Under Armour" is a registered trademark of Under Armour Inc. "Yelp" is a registered trademark of Yelp, Inc. "Wi-Fi" is a registered trademark of the Wi-Fi Alliance. All other trademarks are the property of their respective owners. Some European models shown. Some features may not be available at time of order.