

BMW X Models

X1
X3
X4
X5
X6

bmwusa.com



**The Ultimate
Driving Machine®**

THE BOOK OF

Mark your territory with a big, bold X: the BMW X models that conquer and claim all roads in all weather. BMW's exclusive X models continue to set the benchmark for versatility, performance and aesthetics – taking the SUV concept and injecting it with road-commanding power, sports-car agility and premier BMW craftsmanship. The result: the BMW Sports Activity Vehicle[®] and BMW Sports Activity Coupe[®]. The X lineup displays the renowned road-hugging agility you expect in a BMW, and are just as adept exploring the bright lights of the big city as a starry night in the great outdoors.





X1

PAGE 4 BMW's most compact Sports Activity Vehicle®, the X1 boasts not only incredibly agile handling but a dazzling blend of sporty design, innovative technology and ample cargo space.



X4

PAGE 16 Combining a coupe-like roofline and sporty contours with SAV® versatility, the BMW X4 stands out as much as its owner. Making a bold yet elegant statement, this Sports Activity Coupe® is intelligent, sophisticated and unique.



X6

PAGE 20 In as little as 4.6 seconds you're at 60 mph¹ in BMW's original Sports Activity Coupe: the uninhibited X6. Its exhilarating performance will dominate whatever road you're on. A born standout with an aggressive personality.



X3

PAGE 8 The BMW X3 inspires supreme confidence behind the wheel. With handling innovations like Variable Sport Steering, the enhanced feedback of Head-up Display and Surround View, and comfort for every passenger, the X3 offers limitless enjoyment to go.



X5

PAGE 12 Master any road in the mighty BMW X5. The original Sports Activity Vehicle is also still the largest in BMW's lineup, offering more luxury and space. With up to 445 hp and room for up to seven passengers, there's nothing it cannot conquer.

¹BMW AG test results for X6 xDrive50i. BMW urges you to obey all posted speed laws and always wear safety belts.

Get the latest information on BMW standard and optional features, packages and technical specifications. Visit bmwusa.com and select the BMW model of your choice.



THE BMW X1.

Compact in stature but with an oversize personality, the all-new BMW X1 arrives with a muscular presence, robust proportions, and dynamic lines. It cuts through the air with minimal resistance, thanks to smooth underbody paneling, air deflectors, and vertical Aero Blades that channel airflow for minimal resistance. Halogen headlights and LED Daytime Running Lights, 18-inch Y Spoke wheels and a power tailgate come standard. The Premium Package adds the luxury of a Panoramic moonroof, while full LED headlights make for a luminous presence on the road.

The BMW X1 xDrive28i features a new BMW EfficientDynamics engine: a 228-hp, 2.0-liter TwinPower Turbo four-cylinder that launches from 0–60 in 6.3 seconds¹. True to its BMW heritage, the X1 offers a broad range of individualization. An M Sport Package² adds a more aggressive appearance with its M sport steering wheel, M-style bumpers and rocker panels, and the choice of exclusive Estoril Blue Metallic paint finish. Sport seats, included in the package, add special bolstering to keep you firmly seated during spirited driving maneuvers.

¹BMW AG test results. BMW urges you to obey all posted speed laws and always wear safety belts.

²M Sport Package available as of November 2015 production.

Get the latest information on BMW standard and optional features, packages and technical specifications. Visit bmwusa.com and select the BMW model of your choice.





BIGGER ROOM. BETTER VIEW.

Defining the BMW X1 interior is a driver-focused cockpit. Instrumentation in the generously sized dash and center console help you control your surroundings at all times. Storage abounds, front and rear – in the doors and center consoles, behind the front seats, in and under the cargo area – with clothes hooks and restraining straps to secure your items, as well as handy cupholders. The higher seating position further enhances visibility, while power seats with driver-side memory personalize your comfort. Numerous options underscore the premium character of the X1, including a Technology Package that brings a BMW Navigation system with touchpad Controller, Advanced Real Time Traffic Information, Full Color Head-up Display, 8.8-inch Control Display, plus Enhanced USB and Bluetooth.®

Get the latest information on BMW standard and optional features, packages and technical specifications. Visit bmwusa.com and select the BMW model of your choice.

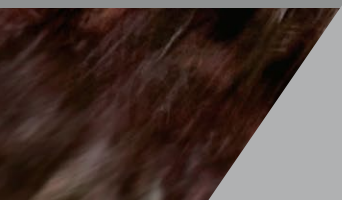


THE BMW X3.

Conquer the city or make a great escape with sporty dynamics, premium character, and robust agility – all hallmarks of the BMW X3. A wide front bumper and a large double kidney grille give it a commanding yet elegant presence. Distinctive headlights, extending out from the sides of each kidney grille, are available with Xenon adaptive or Adaptive Full LED technology. Advanced active safety technologies include Active Blind Spot Detection, Lane Departure Warning, Pedestrian Warning, Frontal Collision Warning, and City Collision Mitigation.

Three kinds of TwinPower Turbo performance are available: A clean and quiet Advanced Diesel with 180-hp and 280 lb-ft of torque; a highly energetic and efficient 240-hp, 2.0-liter inline four-cylinder; and an impressive 300-hp inline six. An optional M Sport version enhances the X3's dynamic appearance.

Get the latest information on BMW standard and optional features, packages and technical specifications. Visit bmwusa.com and select the BMW model of your choice.







INDULGE YOUR FREE SPIRIT.

The BMW X3 interior combines an atmosphere of relaxed luxury with ingenious functionality, while retaining the renowned BMW driver-orientation. Power seats are standard, while heated front and rear seats, plus a heated steering wheel, are optional. The cabin is dressed to impress with a range of leather and trim choices, and infotainment is plentiful via the iDrive system with touchpad Controller. Navigation destinations are placed right at your fingertips, as is music on multimedia devices, CDs, and BMW ConnectedDrive® apps. A Premium Package lets in the sky with a Panoramic moonroof.

Get the latest information on BMW standard and optional features, packages and technical specifications. Visit bmwusa.com and select the BMW model of your choice.



THE BMW X5.

The BMW X5 is the largest member of the X Series – unmistakably the vehicle that will get you anywhere and back, confidently and luxuriously. Its authoritative yet aerodynamic design emphasizes its unbeatable versatility. Offered as the ruggedly elegant xLine, sophisticated Luxury Line, or adventurous M Sport, there's an X5 to match your personality and lifestyle.

With 300-hp and 445-hp TwinPower Turbo gasoline engines, or an available Advanced Diesel with 413 lb-ft of torque, the BMW X5 is built to move you. Add the performance-enhancing features of the Dynamic Handling Package¹ – with Dynamic Performance Control, Active Roll Stabilization, Dynamic Damper Control, and a rear-axle air suspension – to take the X5's pulse-pounding performance to the next level.

¹Not available on all models.

Get the latest information on BMW standard and optional features, packages and technical specifications. Visit bmwusa.com and select the BMW model of your choice.







CAPACITY FOR COMFORT.

With its outstanding spaciousness and an optional third row, the BMW X5 will seat up to seven in total comfort and luxury. The standard BMW Navigation system with free-standing 10.2-inch Display and iDrive touchpad Controller are positioned to keep you in complete control, while you relax in optional 20-way Multi-contour seats. And in the rear, your passengers can be treated to adjustable Comfort seats, including backrest angle and fore/aft adjustments – perfect for a private viewing of their favorite blockbuster on the dual LCD screens, included in the Rear-seat entertainment system with DVD drive.

Get the latest information on BMW standard and optional features, packages and technical specifications. Visit bmwusa.com and select the BMW model of your choice.



THE BMW X4.

A high stance and broad shoulder line point to the performance potential of the BMW X4 before you even enter. The dynamic roofline contours of this Sports Activity Coupe combine with sleek athletic curves to grab your attention. LED fog lights and available Adaptive LED Headlights round out this elegant vehicle's unique and impeccable style.

The BMW X4 delivers Ultimate Driving Machine® dynamics, with state-of-the-art TwinPower Turbo engines and an 8-speed Sport Automatic transmission. Fortified by BMW EfficientDynamics technology, fuel consumption and emissions are optimized without sacrificing power. BMW xDrive intelligent all-wheel drive keeps a firm grip on the road, while Performance Control and Variable Sport Steering provide outstanding handling and stability through bends, curves, and corners.

Get the latest information on BMW standard and optional features, packages and technical specifications. Visit bmwusa.com and select the BMW model of your choice.





DYNAMIC BY DESIGN.

Sport meets luxury – as exemplified by the leather-wrapped multi-function Sport steering wheel, whose shift paddles assert the X4's performance intentions. Driver-oriented controls, the large iDrive touchpad Controller, Enhanced USB and Bluetooth®, and available Surround View ensure you're at the center of the action. With outstanding legroom, exclusive interior furnishings, and available Harman Kardon® Surround Sound System, the BMW X4 fulfills the highest demands of driver and passengers.

Get the latest information on BMW standard and optional features, packages and technical specifications. Visit bmwusa.com and select the BMW model of your choice.





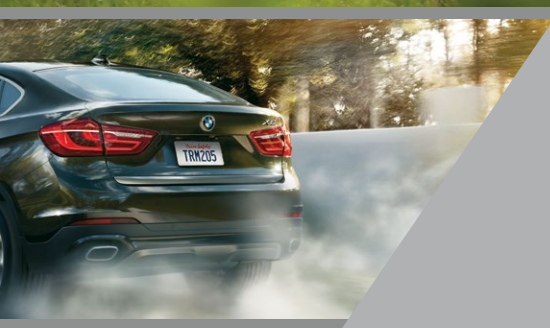
THE BMW X6.

The BMW X6 Sports Activity Coupe combines the bold, solid stance of an SAV® with the sporting elegance of a coupe to create an unforgettable image of strength and sophistication. The large kidney grille and front air dam give an indication of the aggressive power under the hood; adding the M Sport Aerodynamic kit further underscores its dominant presence. When approaching from the side, the coupe-like silhouette commands attention.

The X6 is a powerhouse of performance. An available 445-hp, 4.4-liter V-8 blasts off from 0 to 60 in a mere 4.6 seconds,¹ and BMW's award-winning 300-hp, 3.0-liter inline six-cylinder engine gets you there in just 6.0 seconds.¹ Both BMW TwinPower Turbo engines work in tandem with an 8-speed Sport Automatic transmission with a Launch Control function that quickly turns engine power into road speed.

¹BMW AG test results. BMW urges you to obey all posted speed laws and always wear safety belts.

Get the latest information on BMW standard and optional features, packages and technical specifications. Visit bmwusa.com and select the BMW model of your choice.





INTELLIGENT AMBIANCE.

You're in complete control of your surroundings in the uniquely designed BMW X6 cabin. All instrumentation is placed at your fingertips, and the Dynamic Digital Instrument Cluster personalizes your experience based on the Driving Dynamics Control mode you select. At night, as your passengers relax in luxurious leather upholstery, immersed in the tonal bliss of the optional Bang & Olufsen® Surround Sound System, the cabin interior is bathed in soothing LED lighting with customizable blue, orange and white color configurations.

Get the latest information on BMW standard and optional features, packages and technical specifications. Visit bmwusa.com and select the BMW model of your choice.



BMW TECHNOLOGY AND FEATURES.



BMW xDRIVE. CONQUER EVERY TERRAIN.

BMW xDrive intelligent all-wheel drive delivers an unwavering grip – enhancing agility and keeping you safely on track in all conditions. Never wasting drive power on a wheel without traction, it seamlessly distributes power among the gripping wheels, as needed, in response to the road surface or overall driving situation. It can even direct up to 100 percent of available torque to one axle to restore vehicle stability before you notice anything amiss.



BMW CONNECTED DRIVE. THE RIGHT CONNECTIONS WILL GET YOU PLACES.

Stay connected, informed and in command when you're behind the wheel. Services and Apps from BMW ConnectedDrive® let you summon emergency aid, make travel arrangements, avoid a traffic jam and more. All along the way, a world of music awaits through multimedia devices, Pandora,® Stitcher™ and other streaming services.



ADAPTIVE LED HEADLIGHTS. ALWAYS KNOW WHAT'S UP AHEAD.

Dark, winding roads are no match for Adaptive LED Headlights. These headlights turn their beam as you turn the steering wheel, to light up every bend, curve and corner, and make driving at night or in low-light conditions much safer. BMW's Automatic high beams monitors ambient light, and can turn high beams on and off as needed – an especially useful feature when oncoming road-users are detected.

DRIVER ASSISTANCE. MORE THAN MEETS THE EYE.

Cameras around the outside of the vehicle help keep you aware of your surroundings; this includes video images shown on the Control Display.

Parking Assistant makes short work of parallel parking by finding a suitable spot for you as you cruise, and then steering you into that spot.



CARGO CAPACITY. THERE'S A PLACE FOR EVERYTHING.

Exceptional roominess and advanced functionality are hallmarks of BMW Sports Activity Vehicles and Sports Activity Coupes. All offer a host of practical storage possibilities, such as door pockets and compartments; 40/20/40 split-folding rear seats offer flexible cargo configurations. With ample room for passengers and cargo, BMW X models let you bring everyone – and everything – along for the ride.



HEAD-UP DISPLAY. KEEP AN EYE ON WHAT'S AHEAD – AND IMPORTANT.

Now there's no need to take your eyes off the road to keep an eye on your speed or navigation directions. With the Full Color Head-up Display, your choice of important driving data, such as speed limits, directions, even Check Control warnings, are projected over the end of the hood, directly in your line of sight. Use the iDrive Control Display to select and prioritize the type of information shown.



**EXTERIOR COLORS
ALL X MODELS**



300 Alpine White (Non-Metallic)



668 Jet Black (Non-Metallic)



A96 Mineral White Metallic



A83 Glacier Silver Metallic



475 Black Sapphire Metallic

X3, X4, X5, AND X6 EXCLUSIVE



A14 Mineral Silver Metallic



416 Carbon Black Metallic

X1 EXCLUSIVE



B39 Mineral Gray Metallic



C29 Chestnut Bronze Metallic



C10 Mediterranean Blue Metallic



B45 Estoril Blue Metallic

X3 AND X4 EXCLUSIVE



A75 Melbourne Red Metallic



A76 Deep Sea Blue Metallic

X1, X3, X4 AND X5 EXCLUSIVE



B53 Sparkling Brown Metallic

X1 AND X6 EXCLUSIVE



C07 Dark Olive Metallic

X3, X5, AND X6 EXCLUSIVE



A52 Space Gray Metallic

X4, X5, AND X6 EXCLUSIVE



A90 Dark Graphite Metallic

X5 EXCLUSIVE



A89 Imperial Blue Metallic

X6 EXCLUSIVE



C06 Flamenco Red Metallic



TO BUILD YOUR OWN BMW X VEHICLE, VISIT BMWUSA.COM/BYO.

U.S. Importer and Distributor: BMW of North America, LLC, Woodcliff Lake, NJ 07677. All illustrations and specifications contained in this brochure are based on the latest product information available at the time of printing. BMW reserves the right to make changes at any time, without notice, in colors, materials, equipment, specifications and models. BMW may, subject to legal requirements, determine the Model Year designation of its vehicles. The Model Year designation on any particular model may be longer or shorter than 12 months. Some vehicles pictured may contain non-U.S. equipment. Some models may be shown with optional equipment. While BMW NA makes all reasonable efforts to provide accurate information in this brochure, there is no guarantee or warranty of accuracy. Furthermore, we do not assume any liability for the accuracy or completeness of information presented. This brochure shall not be used or relied upon as a substitute for information that is available from your BMW Center. Further information can be obtained from your authorized BMW Center or bmwusa.com.

©2015 BMW of North America, LLC. Not to be reproduced wholly or in part without written permission of BMW NA. The BMW name, logo, model names, Sports Activity Vehicle, Sports Activity Coupe and SAV are registered trademarks. The Bluetooth word mark and logos are owned by the Bluetooth SIG, Inc. and any use of such marks by BMW is under license. Other trademarks and trade names are the property of their respective owners. Printed in USA 8885-915-30

BMW recommends Original BMW Engine Oil.