

72 Thunderbird



More than a car,  
Thunderbird™ is



The 1972 Thunderbird Hardtop  
Exterior: Maroon

Equipment Choices Shown: Vinyl Roof, Cornering Lights,  
Deluxe Wheel Covers, White Sidewall Tires



Enter the most spacious Thunderbird ever. In the rear, a wide 3-passenger seat with more room than ever for shoulders, legs and knees. In front, the deep-cushioned Split Bench Seat provides comfort uniquely its own. Driver and passenger can individually adjust either half of the seat, and each has his own folding armrest. Underfoot, lush cut pile carpeting stretches wall to wall. This interior is tailored of Lamont Cloth in Tobacco, one of seven new color choices.

## More Thunderbird than ever.

How would you change Thunderbird? The only way. Make it more Thunderbird. And we did for 1972. Welcome to a whole new world of Thunderbird. It is a new world of driving and riding ease. A world of new spaciousness and comfort. Of new luxury and pride of ownership. More regal. More personally individual. More Thunderbird than ever.



# More Thunderbird in every thoughtful detail.

We changed Thunderbird completely—but made sure each change would produce a new car more Thunderbird than any before it. We styled a new Thunderbird look—gave the car more interior size while retaining its classic proportions.

We lengthened the wheelbase, we designed a new rear suspension with an integral stabilizer bar. The results are handling ease that is pure Thunderbird and a ride that is one step closer to flight.

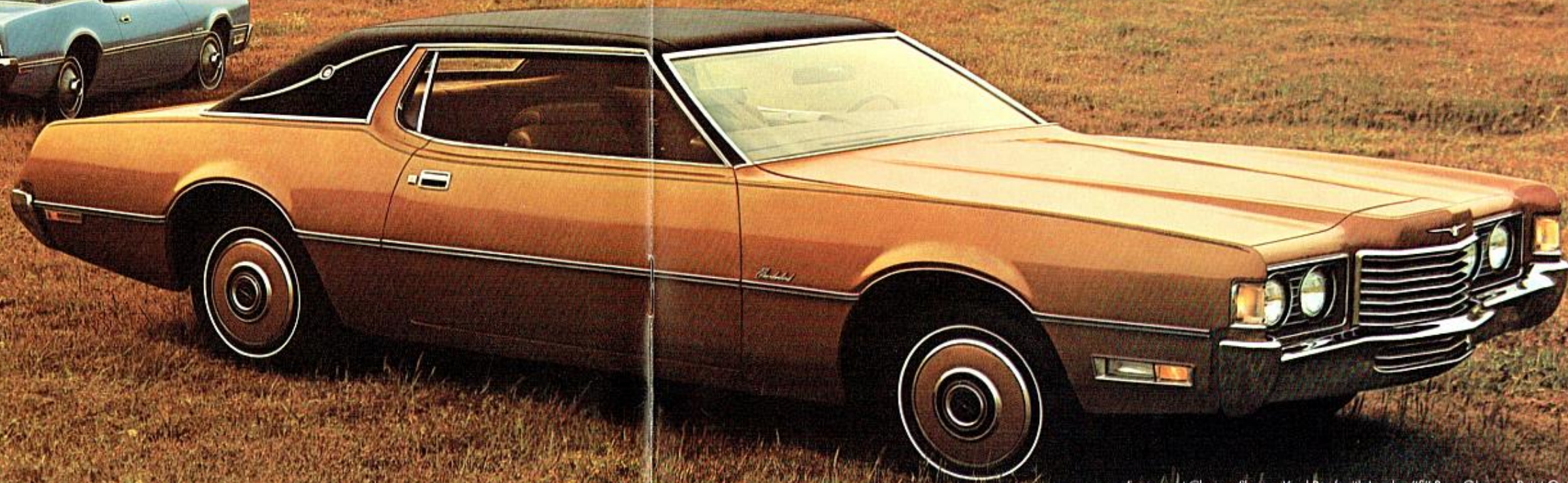
Even in equipment we've given you more Thunderbird. Michelin steel belted radial ply black sidewall tires, guaranteed for 40,000 miles.\* A 400-cu. in. 2V V-8 that uses regular fuel. SelectShift Cruise-O-Matic with automatic parking brake release. Power steering and power front disc brakes. At your option, there is SureTrack, the computer-controlled braking system that helps provide straighter stops under most conditions.

We think you'll agree, we've thought of just about everything.

\*See Michelin tire guarantee, inside back cover.



Exterior: Medium Blue Metallic



Interior: Copper Fire

Equipment Choices Shown: Vinyl Roof with Landau "S" Bars, Glamour Paint Option Group (details on page 6), Cornering Lights, White Sidewall Tires.



## More Thunderbird in equipment choices that personalize.

Thunderbird comes fully endowed with comfort, convenience and driving items rarely found standard on most cars. Even so, many options are available to help you make Thunderbird more personally yours.

Consider ordering the Power-Operated Sunroof shown below. (Press a switch to let sunshine in, press it again and all is snug and weathertight.) Add luxury touches of the Glamour Paint Option Group, special hand-rubbed metallic paint, body and hood striping, color-keyed wheel covers, silvery landau "S" bar inserts (when vinyl roof is ordered), Tinted Glass, Protection Group (license plate frames, door edge guards, rocker panel moldings, floor mats), 429-cu. in. 4V V8, Intermittent Windshield Wipers, Bumper Guards, Spare Tire Cover, Deluxe Wheel Covers offer further personalizing opportunities.



Exterior: White Sidewall Tires

Equipment Choices Shown: Sunroof, Cornering Lights, White Sidewall Tires

Moving inside, to the Split Bench Seat (below), you can add seating surfaces of genuine leather with vinyl trim. Or, change the interior completely, with High Back Bucket Seats and Console (next page).

For a completely automatic Thunderbird... Power Side Windows, Fingertip Speed Control, Power Seat, Power Lock Group (includes power trunk lid release), Power Radio Antenna, Automatic Seat Back Release.

For entertainment... AM Radio, AM/FM Stereo Radio or Stereosonic Tape System.

with AM Radio. For special driving needs... Trailer Towing Package, Traction-Lok

Differential, Heavy Duty Suspension. Quite a long list, you'll agree, and yet there's

more. To see how much, turn the page.



Interior: Seating surfaces of luxurious leather are matched with smart vinyl trim. This is Ginger, one of seven color choices.

**ADDITIONAL EQUIPMENT CHOICES** With (A) High Back Bucket Seats (shown below in red Hopsack cloth and vinyl), you might select a Reclining Passenger Seat. (Available also with Split Bench Seat.) Consider too: (B) Sure-Track, the computerized brake control system that acts quicker than thought. It "reads" the road for skid conditions, automatically helps bring the car to a controlled, straighter stop. (C) Cornering Lights. Side-shining beams to light your way automatically whenever you signal for a turn. (D) Tilt Steering Wheel. Fits itself to your driving comfort. (E) Electric Rear Window Defroster. Elements in the glass gently warm the window to keep it clear. (F) New Thunderbird Flight Panel illustrates SelectAire Conditioner with Automatic Temperature Control. Your favorite weather goes with you everywhere. Set the temperature, SelectAire does the rest the year around. AM/FM Stereo Radio. Multi-band, multi-speaker system that turns your Thunderbird into a concert hall. Also shown: Deluxe 3-Spoke Steering Wheel with Rim-Blow Horn feature. (G) Driver's Control Console. At your fingertips, controls for remote control outside mirror and these separate equipment choices: Power Windows, Power Seat. And there are a good many more items which your Ford Dealer can add to this list to widen your choice and personalize your Thunderbird all the more.



## More Thunderbird Facts That Make The C

**STANDARD EQUIPMENT** Power Team, 400-cu. in. 2V V8 and 3-speed SelectShift Cruise-O-Matic Transmission. Power Steering. Power Front Disc Brakes. Automatic Parking Brake Release. Michelin 40,000-Mile Black Sidewall Steel-Belted Radial Ply Tires. Electric Clock. Split Bench Front Seat (driver, passenger sides individually adjustable). Front Seat Center Armrests. Seat Belt Reminder System. Cut Pile Carpeting. Wall to Wall. Power Ventilation. MagicAire Heater/Defroster. Remote-Control Outside Mirror (driver's side). Protective Side Moldings with Vinyl Inserts. Courtesy lighting (door-operated dome light, door lights and under panel light, glove compartment light, front ash tray lights). Fully Insulated Body. Fully Lined and Lighted Trunk-13.9 cu. ft. total luggage volume.

**COLORS AND UPHOLSTERIES** 23 exterior colors with 17 color-keyed interiors, including both standard and optional choices.

Colors: Light Blue, Pastel Lime, Black, Light Gray, Metallic, White, Dark Green Metallic, Medium Green Metallic, Dark Blue Metallic, Maroon, Dark Brown Metallic, Yellow, Light Yellow, Gold, Gray, Gold Metallic, Medium Blue Metallic, Bright Green, Gold Metallic, Glamour Paint Option Group choices: Blue Fire, Green Fire, Walnut Fire, Copper Fire, Gold Fire, Lime Fire, Cinnamon Fire, Burgundy Fire.

**UPHOLSTERIES** (split bench seat) sid. Lamont Cloth & Vinyl in Black, Dark Red, Dark Blue, Dark Green, Tobacco, opt. Leather & Vinyl in Black, White, Dark Red, Ginger, Dark Blue, Dark Green, Tobacco, (optional bucket seats), Hopsack Cloth & Vinyl in Black, Dark Red, Dark Blue, Dark Green, Ginger.

**DIMENSIONS AND SPECIFICATIONS** Overall length 216" wheelbase 120.4" tread (front/rear) 63.0"/62.8" overall width 79.3" overall height 51.3" Capacities-trunk luggage volume 13.9 cu. ft.; fuel tank 22.5 gal. Curb weight 4503 lb.

**ENGINES** Standard 400-cu. in. 2V V8, 4.00" bore x 4.00" stroke, 2-barrel carburetor, regular fuel, single exhaust. Optional 429-cu. in. 4V V8, 4.36" bore x 3.59" stroke, 4-barrel carburetor, regular fuel, single exhaust.

**BODY AND FRAME CONSTRUCTION** S-shape front frame rails provide energy absorption on impact. Body mounting at computer-designated points for noise and vibration suppression characteristics.

**SUSPENSION** Full coil spring. Front-independent drag-strut, ball-joint type. Rear-four-link rubber-cushioned system with integral stabilizer bar.

**STEERING RATIO** (overall) 21.7 to 1. Turning diameter 43 ft. **POWER BRAKES** Front, floating-caliper disc type, swept area 232.0 sq. in. Rear, drum shoe type, swept area 155.9 sq. in.

**WHEELS AND TIRES** True-Center wheels on precision mounted hubs. 215 R15 Michelin black sidewall steel-belted radial ply tires.

**FORD MOTOR COMPANY LIFEGUARD DESIGN SAFETY FEATURES**, standard in

