

F O R D 1 9 9 4

# THUNDERBIRD



## 1994 THUNDERBIRD

Discover for yourself in a Ford Thunderbird the style, comfort and performance that create a truly rewarding driving experience.

Discover something else, too. Prestige: that special quality that evolves with a unique nameplate as its reputation for excellence in personal luxury and comfort grows over the years.

### THE EVOLUTION CONTINUES

In 1994, the evolution of the renowned Thunderbird emblem carries on with significant improvements:

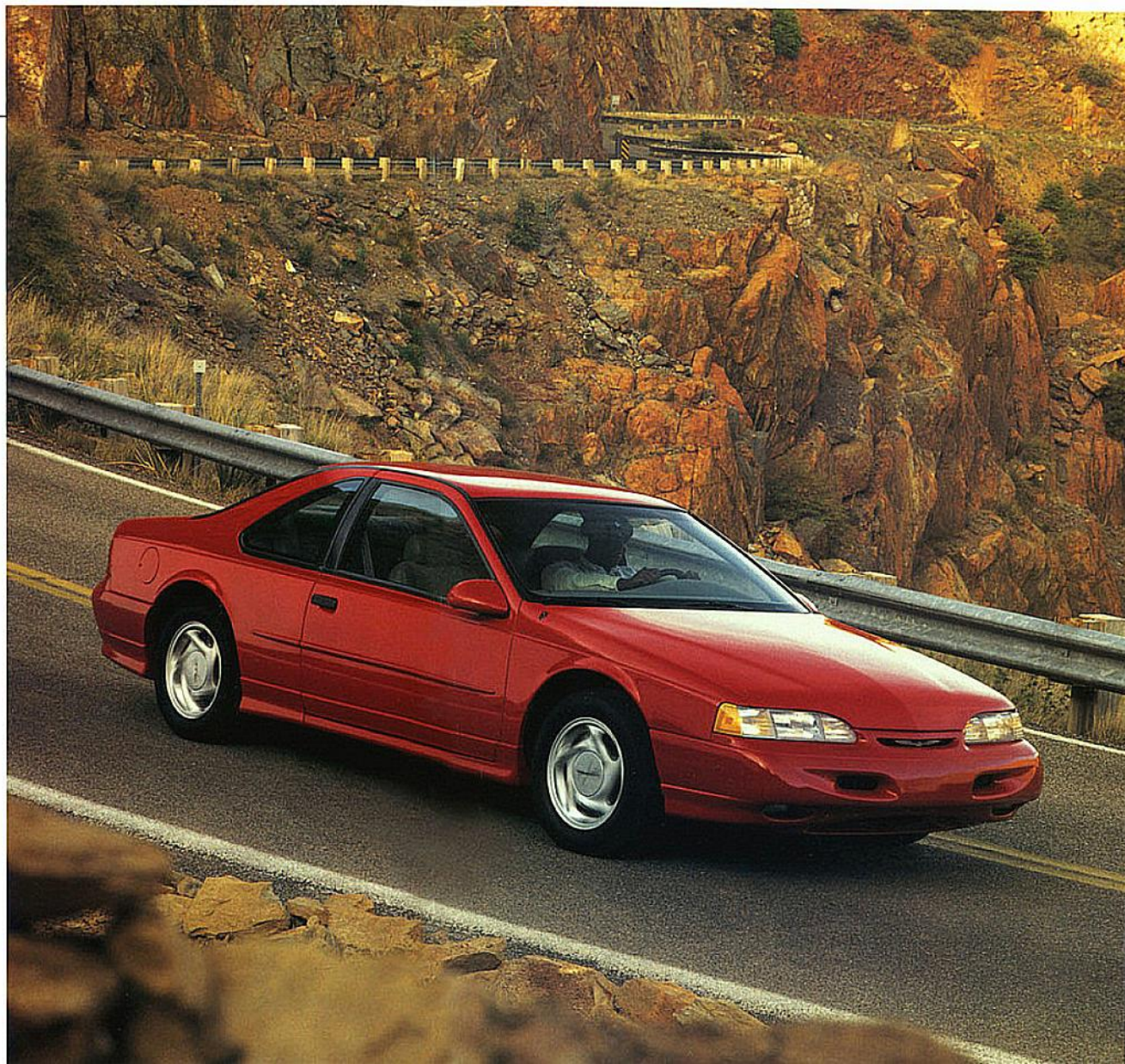
Dynamic front and rear exterior styling refinements.

An interior redesigned for greater comfort and convenience — and equipped with driver and front passenger air bag supplemental restraint systems (SRS).

An electronic 4-speed automatic overdrive transmission controlled by computer — standard in the LX, optional in the Super Coupe.

Plus two newly available options: the advanced-design 4.6-litre SOHC V-8 (for the LX model) and the Electronic Traction Assist system that's linked to 4-wheel anti-lock braking technology (standard on Super Coupe).

Ford Thunderbird. More than ever, it's a personal luxury car superbly designed for driving enjoyment and riding comfort. And carefully engineered for your safety.



*At right: The new 1994 Thunderbird Super Coupe in Crimson Clearcoat. Lower bodyside cladding and P225/60ZR performance tires on directional cast aluminum wheels are among the SC's many unique features. Some equipment shown is optional.*



## QUALITY

Ultimately, the quality of your driving experience is the final test of your car's quality. That's why so much time and effort are committed to helping ensure that every design and engineering feature in a Ford car is carefully examined for its contribution to customer satisfaction.

Thunderbird's excellent quality results in part from

a best-in-class approach to design and engineering. In a variety of categories, from vehicle dynamics and mechanical operation to comfort and aesthetics, over 350 Thunderbird features were compared against those of select domestic and import nameplates. The goal was to be best-in-class in as many of these features as possible.

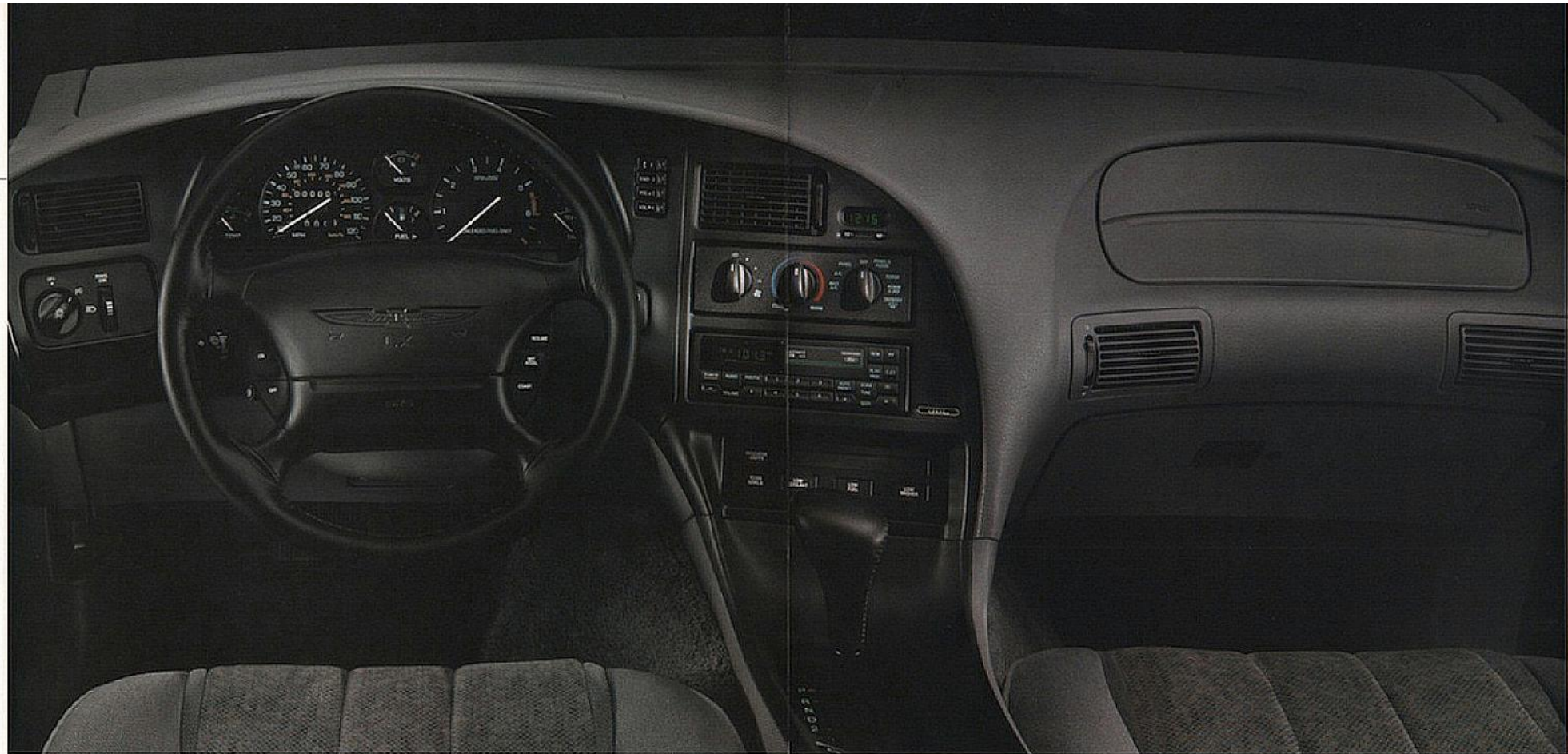
Quality is often something you can easily see, such as the precision of body seam tolerances, the luster of the paint finish, the uniform fit of the upholstery.

Some qualities, though, are not meant to be seen but felt: the comfort of the seating and the ease of operating ergonomically designed controls, for example.

Of particular significance is Thunderbird's structural integrity, which engineers have enhanced by using techniques such as applying special adhesives to body joints in addition to welding.

Ford Thunderbird gives you that special sense of smooth, stable ride comfort you'd expect in a superbly engineered personal car.

*The new 1994 Thunderbird LX in Indigo Clearcoat Metallic. Some equipment shown is optional.*



## OCCUPANT SAFETY

There's only one thing more important than your physical comfort: the peace of mind which comes with knowing that your car is thoroughly engineered for your safety.

From its body structure to many of its individual components, Ford Thunderbird is developed and exhaustively tested with safety as a primary concern.

Thunderbird is equipped with "occupant safety" features — those specifically designed to help protect you and your passengers in the event of an accident.

There are occupant safety features you might never associate with safety, such as energy-absorbing visors and door trim panels designed for impact protection.

Then there are the more obvious safety features, like energy-absorbing instrument panel padding and, most notably, the air bag supplemental restraint system (SRS).

The air bag is a new feature of the 1994 Thunderbird's new interior design. It's provided as standard equipment for both the driver and the front seat passenger.

The air bag supplemental restraint system, designed to activate in certain frontal impacts, inflates in less than 1/10 of a second and begins deflating immediately.

Important as the air bag is, always remember that it's intended only to supplement your lap and shoulder belts, which can help protect you in all types of impacts.



*The all-new Thunderbird LX instrument panel in Opal. Some equipment shown is optional.*

*Thunderbird for 1994 provides an air bag as standard equipment for both the driver and the front seat passenger.*

## ALL-NEW INTERIOR



*Above: New standard in the Thunderbird LX are the smoothness and precision of a computer-controlled electronic 4-speed automatic overdrive transmission. The shift lever is leather-wrapped.*

*CFC-free air conditioning, standard in LX, is designed without rotary controls.*

Thunderbird's dramatically redesigned interior for 1994 is not only highly attractive, but it also provides a greater level of driving satisfaction and riding pleasure.

The traditionally long list of Thunderbird LX features has grown to include an air bag supplemental restraint system for the driver and front passenger, illuminated

controls for the power door locks and windows, dual cupholders in the full center console, and a separate heat duct for the rear passengers.

These are all in addition to the CFC-free air conditioning system (with new rotary-style controls), speed control, tilt steering wheel, illuminated entry system, 6-way power driver's seat

adjustment, electric remote outside mirrors, remote fuel door and decklid releases.

Plus luxury-level door panel trim and seat upholstery and plush 24-oz. cut-pile carpeting — these, too, are features you would expect in a car of Thunderbird's stature.

What you might not expect in a genuine driver's car, however, is generous room

for five. While 2-door coupes typically fall short when it comes to meeting the needs of those seated in the rear compartment, Thunderbird, you'll pleasantly discover, is an exception to this norm.

Few cars in Thunderbird's class accommodate all their passengers as comfortably as Thunderbird accommodates its five occupants.

*Thunderbird for 1994 has an all-see-it-leter design. Featured here is the well-equipped and luxuriously trimmed LX interior in Opal. Some equipment shown is optional.*



*Above: Speed control is one of the Thunderbird LX's many amenities. Illuminated controls are a new feature of the LX's standard power windows and door locks.*

*At left: The instrument cluster features the clarity of analog gauges. A trip odometer, too.*





## DYNAMIC STYLING

In the world of 2-door luxury coupes, Thunderbird's design is distinctive, unmistakable. An eloquent statement of Ford design leadership.

Dynamic styling. This was the goal that Ford designers achieved when they created Thunderbird's unique design: a shape possessing striking visual appeal as well as functional efficiency.

Consider just a few of the many Thunderbird features designed to direct the flow of air smoothly over, under and around the body:

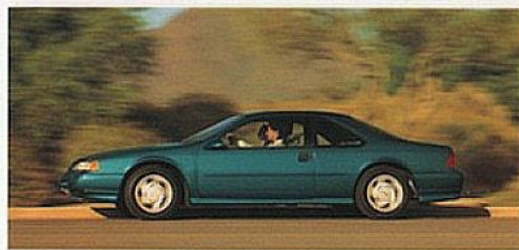
Air for engine cooling taken in from under the bumper rather than through a conventional grille. Integrated, flush bumpers. Aero-design halogen headlamps blending into the contours of the front

end. Fenders curving into the hood line. Doors merging into the roof line with concealed drip rails. And aero-designed rearview mirrors.

As a result of Thunderbird's aerodynamics, the engine operates more efficiently\* because it doesn't have to work as hard to overcome the inhibiting force of air drag at cruising speeds.

The interior is quieter, too. And through careful fine-tuning of the body surface, the air flow is purposefully directed in such a way as to create downforce, which enhances handling control.

The Ford Thunderbird for 1994. Its design is modern and contemporary, and an elegant expression of your personal style of driving.



*Above: Thunderbird Super Coupe in Crimson Clearcoat.*

*At left: Thunderbird Super Coupe in Teal Clearcoat Metallic.*

*Some equipment shown is optional.*

*\*EPA estimates were unavailable at press time. See your Ford Dealer for mileage information.*

## DRIVER CONTROL

A car's performance depends on the quality and precision of its engineering. In much the same way, a driver's performance depends on the excellence of the car's ergonomic design.

### THE CREATION OF A GENUINE DRIVERS CAR

The singular objective of ergonomics is clear: to make driving as comfortable and convenient as possible, so that you can devote as much attention as possible to the operation of the car.

sense by sight or touch is a thorough understanding of how you function, mentally and physically, as the driver.

The important controls are within close reach and are identifiable quickly by touch; the instruments are located and colored to make them easy to read at a glance.

The leather-wrapped steering wheel is designed to provide an unobstructed view of the instrument cluster as well as a firm grip.

Seating is designed for firm and supportive comfort.

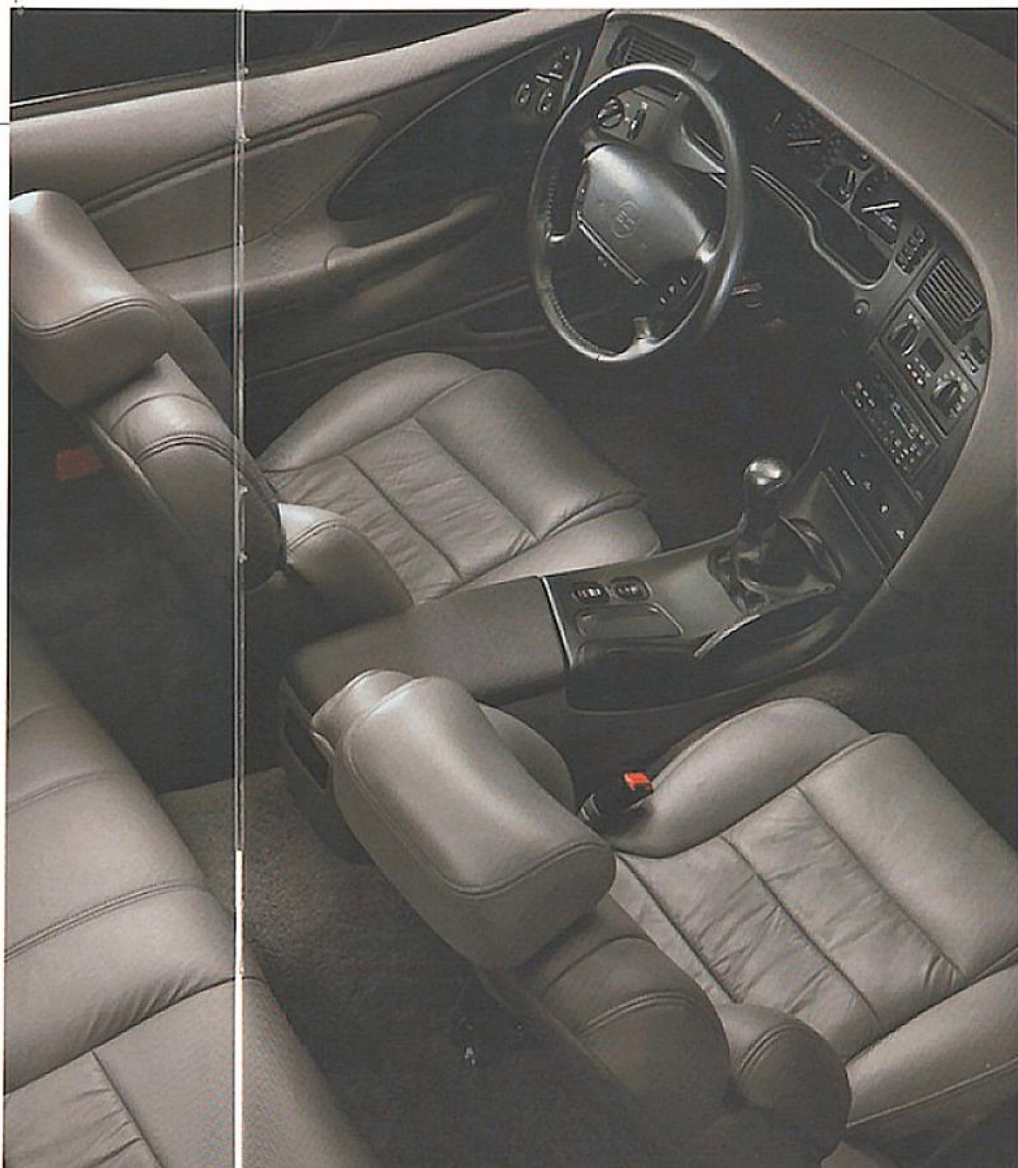


The all-new Thunderbird Super Coupe's instrument panel (above) and steering wheel (right) is DOD. Notice how the dials and controls are angled toward the driver, an important ergonomic design feature. Some adjustment dials, such as the leather seating surfaces, is optional.

That's why Ford designers focused so much attention and effort on crafting the interior of the Thunderbird around the driver's special needs. Because ultimately, a car that is more comfortable and easier to drive is more enjoyable to drive.

In Thunderbird, behind every detail of design you

The Super Coupe's articulated sport seats, featured here, have power-adjustable lumbar and side bolster supports and can be adjusted to a wide range of positions. Designed to help hold you in place when cornering, the SC's sport seat is just what you'd expect in a car of such high-performance capability.



In the center console of the instrument panel are the air conditioning controls (optional electronic system sliders), the stereo radio/cassette sound system, and the new integrated warning lamp module (part of the luxury grade option). In the module are a switch for the Electronic Traction Assist system (optional) and lights for low coolant, fuel, washer fluid, door ajar, plus "trim" rails (SC only).

The all-new SC offers you a standard 5-speed manual over-drive transmission (shown) or optional electronic 4-speed automatic with Electronic Traction Assist. Controls for the SC's automatic ride control suspension are located in the floor console for ease of reach and operation.

## OPERATING SAFETY

Thunderbird is designed to help protect you in an accident, with features such as standard driver and front passenger air bags.

Of vital importance, too, are the "operating safety" features for handling and braking control that can help you avoid an accident in the first place.

### LX SUSPENSION

The 4-wheel independent suspension, equipped with components such as nitrogen gas-pressurized shocks and variable-rate coil springs, is engineered for ride quality and tight handling.

Handling is enhanced by front and rear stabilizer bars.

Also, the rear toe-control link, similar to those found on European performance cars, helps control a wheel's direction as the suspension moves up and down, especially during hard acceleration, cornering and braking.

### SC SUSPENSION

With its special suspension package (16" Z-rated performance tires, plus higher-rate stabilizer bars, coil springs and front suspension lower arm pivot bushings), Super Coupe delivers high-performance handling capability.

Super Coupe is equipped also with the automatic ride control system that adjusts the shock absorber damping with split-second precision to suit the driving situation. Damping is "normal" for a smooth ride or "firm" when extra handling is required (the "firm" mode may also be selected manually).

### SPEED-SENSITIVE STEERING

This computer-controlled system delivers more power assist at low speeds (when cornering or parking) and reduces power assist as vehicle speed increases to provide the firmer, more controlled feel of the wheel you need at cruising speeds.

### ANTI-LOCK BRAKE SYSTEM

The anti-lock brake system (ABS) prevents the wheels from locking up during hard braking by applying and releasing the brakes at a

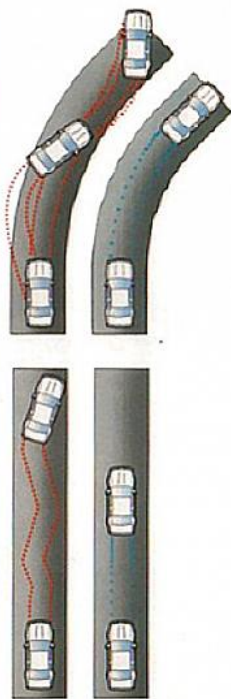
speed far exceeding that of human capability — up to 10 times per second. It's much like a professional driver who skillfully "pumps" the brakes, only much faster.

ABS, standard on Super Coupe and optional on Thunderbird LX, provides greater steering control and smooth, straight stops under most conditions, even on wet and slippery roads.

### ELECTRONIC TRACTION ASSIST SYSTEM\*

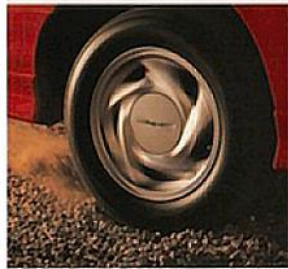
Linked to ABS technology is Electronic Traction Assist. Its sensors monitor wheel rotation at low speeds to help ensure optimum traction. When wheel slippage is detected, the brakes are automatically applied to slow down the slipping wheel(s), thereby providing an added measure of control.

Now available for Thunderbird is the advanced Electronic Traction Assist system, designed to improve low-speed acceleration on loose or slippery surfaces.



The anti-lock brake system prevents the wheels from locking up in hard braking situations, providing smoother, straighter stops and greater steering control. It's standard with the high-performance Super Coupe and optional on the Thunderbird LX.

\*Electronic Traction Assist system requires the electronic 4-speed automatic overdrive transmission, which is standard on Thunderbird LX and optional on Super Coupe.



The air bag supplemental restraint system, an important occupant protection feature, is standard equipment for both the driver and front passenger.



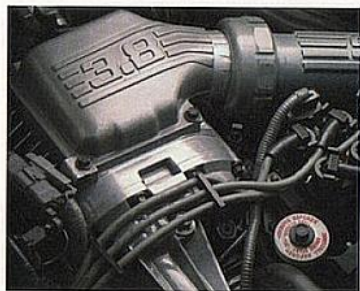
For added security, Thunderbird offers a keyless remote entry system. Included with the option is the illuminated entry system, which provides a ring of light around the lock cylinder and turns on the interior light when the door handle is lifted.



Thunderbird offers you a range of powerteam choices, one of which is sure to match your style of driving.

There's the 3.8-liter V-6, standard in LX; the newly available 4.6-liter V-8 option for the LX; and the high-performance 3.8-liter supercharged and intercooled V-6 in the Super Coupe.

Thunderbird engines are equipped with the precision of a computer-controlled sequential electronic fuel injection system.



**SUPERCHARGED 3.8-LITER SEFI V-6: SUPER COUPE**

The 3.8-liter supercharged and intercooled V-6 delivers 6-cylinder fuel economy at constant speeds (EPA estimates were unavailable at press time) and muscular V-8 power on demand when the supercharger kicks in.

Mechanically driven, the supercharger works across a broad rpm range. Response is quick, even from a start. And the intercooler, which lowers the temperature of the air passing through it to the combustion chambers, increases the density of the air for even more power.

**3.8-LITER SEFI V-6: THUNDERBIRD LX**

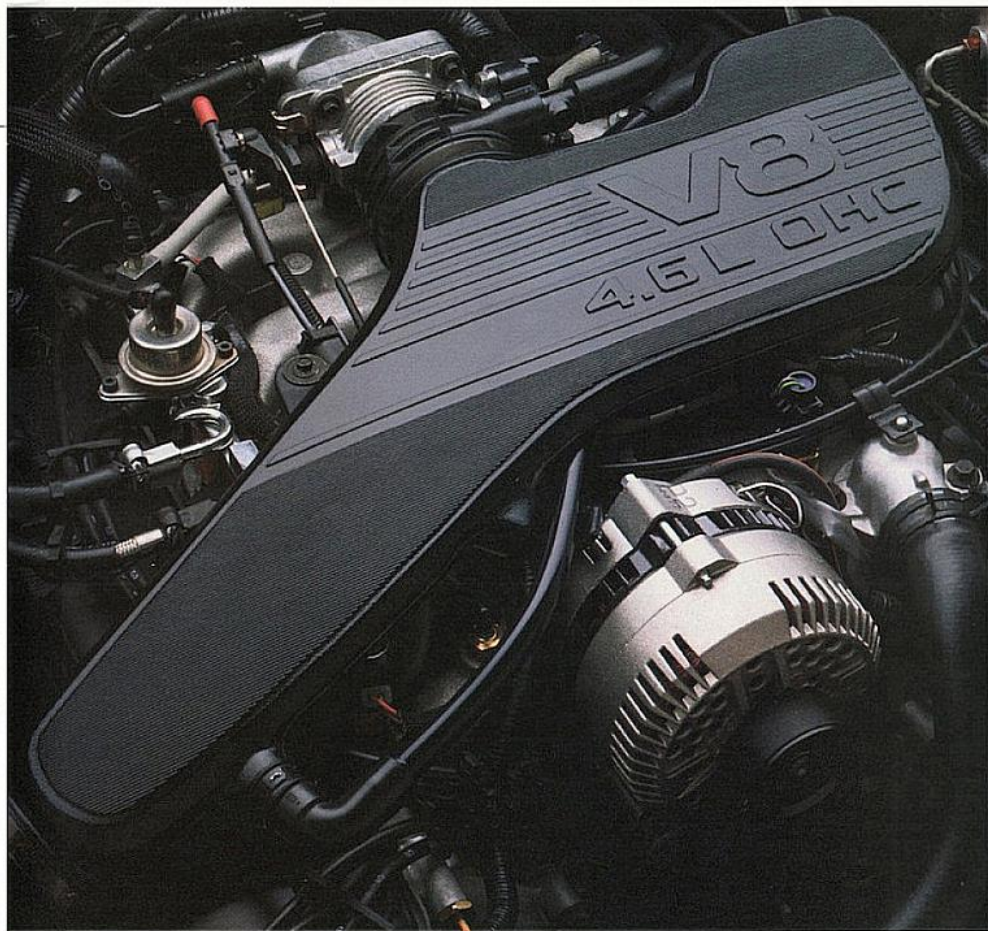
The 3.8-liter V-6 is smooth and responsive. Its sequential electronic fuel-injection system releases fuel precisely and efficiently to each cylinder in "sequence" with the engine's spark firing order.

Fuel metering and ignition timing are just a few of the numerous operations governed by Ford's EEC-IV electronic engine control system. Constantly analyzing operating conditions, EEC-IV fine-tunes the engine to the requirements of the moment.

**4.6-LITER SEFI V-8: THUNDERBIRD LX**

The 4.6-liter V-8, a new option, is one of the most advanced engines in its class. Its overhead cam design, for example, contributes to increased power output per liter. Displacing 4.6 liters, it generates 205 hp (SAE net) @ 4,500 rpm and 265 lbs./ft. of torque @ 3,200 rpm.

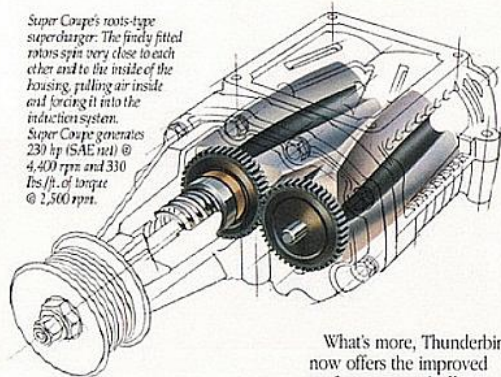
In addition to sequential electronic fuel injection, the 4.6L features the precise air metering of an electronically governed mass air flow sensor, plus the enhanced driveability provided by a distributorless ignition system.



*The newly available 4.6-liter V-8 (optional in LX) has features such as a single overhead cam design and sequential electronic fuel injection. One of the most advanced engines in its class, it's teamed with the smoothness and precision of an electronically controlled 4-speed automatic overdrive transmission, also a new feature in Thunderbird for 1994.*

*Super Coupe's roots-type supercharger. The finely fitted rotors spin very close to each other and to the inside of the housing, pulling air inside and forcing it into the induction system.*

*Super Coupe generates 230 hp (SAE net) @ 4,400 rpm and 310 lbs./ft. of torque @ 2,500 rpm.*



What's more, Thunderbird now offers the improved performance and efficiency of an electronic 4-speed automatic overdrive transmission controlled by computer (standard with LX, optional with Super Coupe). Its overdrive lockout feature lets you select 2nd gear for start-up on slippery surfaces and allows 2nd gear braking on downgrades.

## STANDARD FEATURES AND OPTIONS

### PREFERRED EQUIPMENT PACKAGES AND OPTIONS

P = included in package S = Standard O = Optional  
Note: Package content is subject to change.

	LX 155A	Super Coupe 157A
<b>Group 1:</b>		
Power door locks with remote-control electric fuel door and decklid releases, speed control, and 6-way power driver's seat	S	P
<b>Group 2:</b>		
Electronic semi-automatic CFC-free temperature control system (includes outside temperature indicator), rear window defroster	P	P
<b>Group 3:</b>		
Aluminum wheels with P215/70R16 BSW all-season tires (LX), P225/60ZR16 BSW performance tires (standard on SC), dual illuminated visor mirrors	P	P
Luxury group: autolamp group (on/off delay and automatic day/night mirror), illuminated entry system — standard in LX; light group (instrument panel courtesy light and engine compartment light) — standard in SC; 6-way power passenger seat; and integrated warning lamp module (warning lights for low fuel, low radiator coolant, low washer fluid and door ajar lights, plus switch for optional Electronic Traction Assist system in LX and SC models thus equipped)	O	O
Leather seating surfaces (1)	O	O
Cellular phone — "hands free"	O	O
Anti-theft system	-	O
Remote keyless entry system	O	O
Electronic AM/FM stereo radio with cassette player, power antenna, premium sound system	O	O
Ford JBL audio system	-	O
Compact disc changer (2)	O	O
Electronic AM/FM stereo radio with compact disc player (dealer-installed option)	O	O
Front floor mats	O	O
Power moonroof (includes dual illuminated visor vanity mirrors)	O	O
Cold weather group: engine block heater, 72 amp-hr. heavy-duty battery (standard in SC with automatic transmission), rear window defroster, and traction-lock axle	O	O
4.6-liter SEFI V8	O	-
Electronic 4-speed automatic transmission (3)	S	O
Anti-lock braking system	O	S
Electronic Traction Assist (4)	O	O
P225/60ZR16 BSW all-season performance tires	-	O

(1) Sport bid-down rear seat without center armrest included in Super Coupe. (2) Requires electronic AM/FM stereo radio with cassette player/premium sound system in LX, and the Ford JBL audio system in Super Coupe. (3) Includes Electronic Traction Assist in Super Coupe. (4) Not available in Super Coupe with 5-speed manual transmission.

### COLORS AND TRIMS

Exterior Paint Colors	Interior Trim Colors				
	Opal Grey	Evergreen	Mocha	Portofino Blue	Ruby Red
LX					
Champagne Clearcoat Metallic	■	■	■	■	■
Electric Red Clearcoat Metallic	■	■	■	■	■
Light Evergreen Frost Clearcoat Metallic	■	■	■	■	■
Indigo Clearcoat Metallic	■	■	■	■	■
Moonlight Blue Clearcoat Metallic	■	■	■	■	■
Deep Emerald Green Clearcoat Metallic	■	■	■	■	■
Teal Clearcoat Metallic	■	■	■	■	■
Black Clearcoat	■	■	■	■	■
Vibrant White	■	■	■	■	■
Ocel Frost Clearcoat Metallic	■	■	■	■	■
White Opalescent Clearcoat	■	■	■	■	■
<b>Super Coupe</b>					
Moonlight Blue Clearcoat Metallic	■	■	■	■	■
Teal Clearcoat Metallic	■	■	■	■	■
Black Clearcoat	■	■	■	■	■
Vibrant White	■	■	■	■	■
Crimson Clearcoat	■	■	■	■	■
Ocel Frost Clearcoat Metallic	■	■	■	■	■
White Opalescent Clearcoat	■	■	■	■	■

### MAJOR THUNDERBIRD STANDARD FEATURES

#### Thunderbird LX

3.8L V-6 engine with sequential multi-port electronic fuel injection, 140 horsepower

Electronic 4-speed automatic overdrive transmission with overdrive lockout switch

Long-spindle SLA front suspension with variable-rate coil springs, double-acting gas-pressurized shock absorbers, and a 1.06" diameter stabilizer bar

Independent H-arm rear suspension with toe-control link, variable-rate springs, gas-pressurized shocks, 1.04" diameter stabilizer bar

Variable power-assist, speed-sensitive steering

Power front disc/rear drum brakes

Stamped steel 15" x 6.0" wheels with styled road wheel covers and P205/70R16 BSW tires

Long-lasting LED taillamps

Body color body-side protection moldings

Driver and front passenger air bag supplemental restraint systems; manual lap/shoulder belts

Lap/shoulder belt restraints for rear outboard passengers; lap belt for center rear passenger

Full-length console with floor-mounted leather-wrapped shift and dual cupholders

Map/dome, luggage compartment, ashtray and driver's footwell lights

CFC-free air conditioning and tinted glass

Power windows with illuminated switches

Power door locks with illuminated switches; remote decklid and fuel filler door releases (LX only)

Interval windshield wipers

Dual electric remote-control mirrors

Luxury level door trim and carpeting

Illuminated entry system (LX only)

Analog performance instrumentation: tachometer, fuel, engine temperature and oil pressure gauges; voltmeter, and trip odometer

Luxury cloth reclining bucket seats and 6-way power driver seat adjustment (LX only)

Leather-wrapped luxury steering wheel

Electronic AM/FM stereo search radio with cassette tape player

Speed control (LX only)

Tilt steering wheel

Rear seat courtesy lights

Rear seat center armrest

Rear seat heat duct

**Super Coupe (in addition to or in place of those in Thunderbird LX)**

3.8L supercharged, intercooled V-6 with sequential multi-port electronic fuel injection

5-speed manual overdrive transmission

Supercharger boost gauge (in place of voltmeter)

Automatic ride control suspension (in addition to standard suspension)

Driver's footrest

Handing components: 1.10"-dia. solid front stabilizer bar and 0.90"-dia. solid rear stabilizer bar

Traction-Lock rear axle (manual transmission)

Four-wheel power disc brakes with anti-lock system

Integral fog lamps in front fascia

Directional cast aluminum 16" x 7.0" wheels and P225/60ZR16 black sidewall performance tires

Lower body-side cladding and unique rear fascia

Light convenience group: instrument panel courtesy light and engine compartment light

Cloth/leather/Vinyl articulated sport performance seats, power lumbar and seat back bolster adjustments

Light convenience group: instrument panel courtesy light and engine compartment light

Cloth/leather/Vinyl articulated sport performance seats, power lumbar and seat back bolster adjustments

Light convenience group: instrument panel courtesy light and engine compartment light

Cloth/leather/Vinyl articulated sport performance seats, power lumbar and seat back bolster adjustments

Light convenience group: instrument panel courtesy light and engine compartment light

Cloth/leather/Vinyl articulated sport performance seats, power lumbar and seat back bolster adjustments

Light convenience group: instrument panel courtesy light and engine compartment light

Cloth/leather/Vinyl articulated sport performance seats, power lumbar and seat back bolster adjustments



The optional power moonroof can be tilted up, or it can be slid back into the roof panel by pressing an overhead switch. Pressing and holding the switch moves the glass panel to the intermediate position; pressing it a second time moves the panel to the full open position.



The optional compact disc changer, mounted inside the trunk for security, can hold up to ten discs.

The cellular telephone, optional with storage, has features such as automatic radio volume muting, 30-number memory storage, and voice-activated "hands free" operation.



Enjoy the excellent clarity and performance of the electronic AM/FM stereo radio with compact disc player (dealer-installed option).



The convenience of the automatic day/night rearview mirror is a feature included in the optional luxury group.



From left to right: styled road wheel covers (standard on LX), 15" cast aluminum wheels (included in the LX Preferred Equipment Package), and 16" cast aluminum wheels (standard on Super Coupe).

### PRODUCT CHANGES

Following publication of the catalog, certain changes in standard equipment, options, prices and the like, or product delays, may have occurred which would not be included in these pages. Your Ford Dealer is your best source for up-to-date information.

Ford Division reserves the right to change product specifications at any time without incurring obligations.

# THUNDERBIRD SPECIFICATIONS

## Engine, Thunderbird LX

Type	V-6
Valves	12, OHV
Displacement	3.8L (232 cu. in.)
Horsepower (SAE net)	140 @ 3,800 rpm
Torque (SAE net lbs./ft.)	215 @ 2,400 rpm
Fuel system	Sequential multi-port electronic fuel injection

## Engine, Thunderbird LX

Type	V-8
Valves	16, SOHC
Displacement	4.6L (281 cu. in.)
Horsepower (SAE net)	205 @ 4,500 rpm
Torque (SAE net lbs./ft.)	265 @ 3,200 rpm
Fuel system	Sequential multi-port electronic fuel injection

## Engine, Thunderbird SC

Type	Supercharged/intercooled V-6
Valves	12, OHV
Displacement	3.8L (232 cu. in.)
Horsepower (SAE net)	230 @ 4,400 rpm
Torque (SAE net lbs./ft.)	330 @ 2,500 rpm
Fuel system	Sequential multi-port electronic fuel injection

## Transmissions

Type	Electronic 4-speed automatic overdrive (std. in LX, opt. in SC) 5-speed manual overdrive (std. in SC)
------	--

## Body/Chassis

Drivetrain type	Rear-wheel drive
Body type	Unitized
Steering	Variable power-assist, speed-sensitive

## Body/Chassis cont'd

Brakes	Power front disc/rear drum (LX) Power 4-wheel disc with anti-lock system (SC)
Front suspension*	Long-spindle SLA-type with variable-rate coil springs, double-acting nitrogen gas-pressurized shocks, 1.06" dia. stabilizer bar (1.10" solid in SC)
Rear suspension*	Independent H-arm design with toe control link, variable-rate coil springs, nitrogen gas-pressurized shocks, 1.04" dia. stabilizer bar (0.90" solid in SC)
Tires	P205/70R15 BSW all-season (LX) P225/60ZR16 BSW performance (SC)
Fuel capacity	18.0 gallons

\*Super Coupe also has the automatic ride control adjustable suspension (page 14.)

## Dimensions

	2-Door
Wheelbase	113.0"
Length	200.3"
Height	52.5**
Width	72.7"
Front tread	61.6"
Rear tread	60.2"
Front head room	38.1"
Rear head room	37.5"
Front leg room	42.5"
Rear leg room	35.8"
Front shoulder room	59.0"
Rear shoulder room	58.9"
Trunk volume (cu. ft.)	15.1
Passenger capacity	5

\*\*53.0 for Super Coupe.

## BUMPER-TO-BUMPER COVERAGE

The 36-month/36,000-mile bumper-to-bumper coverage of Ford's new vehicle limited warranty covers the complete vehicle (except tires, battery, service adjustments and other items covered under separate provisions) against defects in factory-supplied materials or workmanship. For complete information, see your dealer.

## FORD CITIBANK CREDIT CARD

Using your Ford Citibank Visa® or MasterCard® could earn you hundreds, even thousands of dollars from Ford toward the purchase or lease of a new Ford, Lincoln or Mercury product. To apply or get more information, call

1-800-374-7777. Or visit a Ford or Lincoln-Mercury Dealer, or a branch office of Citibank.

## ROADSIDE ASSISTANCE PROGRAM

Every new Ford includes the assurance of an emergency Roadside Assistance Program provided by Ford Auto Club, Inc. during the 3-year/36,000-mile bumper-to-bumper warranty period. Help is a toll-free phone call away 24 hours a day, anywhere in the continental United States should you need any towing assistance, fuel delivery, tire change, a jump start or even help when you're locked out of your car. Ask your Ford Dealer for complete details on the Ford Roadside Assistance

Program and a copy of this limited warranty.



Optional Ford Extended Service Plans can cover major components on new Ford cars and light trucks for longer than the vehicle's basic warranty. Your Ford Dealer has full details.



Ford-Credit is a full service company that makes a wide variety of financing and leasing programs available to qualified buyers through the Ford Dealer of your choice. Through Ford Credit's financing or Red Carpet leasing, arrangements suited to your

special needs can be made quickly and conveniently right at the dealership. Ask your Ford Dealer for the facts on any of Ford Credit's financing or lease plans.

## OPTIONS AVAILABILITY

Options shown or described in this catalog are available at extra cost and may be offered only in combination with other options or subject to additional ordering requirements or limitations.

Printed on recycled paper 10% post-consumer waste

