



MASERATI



Ghibli

Ghibli

CONTENTS

Extraordinary Disposition Ghibli—You're not like everyone else	4
A History of Character	10
Exteriors	14
Interiors	22
Gran Duo Ghibli GranLusso and GranSport	30

Engines	50
Technology	56
The Sound of Quality Harman Kardon and Bowers & Wilkins Premium Audio Systems	64
Safety	68
Ghibli Technical Specifications	80
The World of Maserati	82





EXTRAORDINARY DISPOSITION

Bold
STATEMENT, ELEGANTLY DELIVERED

Graceful and assertive, the Maserati Ghibli offers something very different in a world of business-like conformity. As you would expect of a luxury sports sedan, Ghibli delivers inviting comfort and effortlessly intuitive technology, but also race-bred performance. There's elegant four-door design, but also sporting character. And there's the comfort of a smooth, luxurious ride, but also razor-sharp, coupe-like handling.

Such dynamic contrasts, for which Maserati is renowned, are a source of endless inspiration—whether you're on the way to a conference or breaking free for the drive of a lifetime.



The 2020 Ghibli models offer near-limitless excitement, with a host of exterior design elements to delight the eye, along with safety technology and Advanced Driving Assistance Systems.

The Ghibli is also offered in GranLusso or GranSport trim, each comprehensively equipped according to your personal preferences. With the GranLusso, the emphasis is on luxury and comfort. GranSport, meanwhile, accentuates engaging driving dynamics. Both trims offer a range of alloy wheels, exterior paint colors and interior options. Whichever you choose, whatever your ambition, the Maserati Ghibli always has a uniquely inspirational answer.





H



A HISTORY OF CHARACTER



ENDURING LEGACY

The first Maserati Ghibli was designed by Giorgetto Giugiaro and unveiled at the Turin Motor Show of **1966**. Giugiaro, then in his 20s, was considered a design prodigy—and rightly so. His creation, with its 2+2 fastback format, pop-up headlights and audacious shark-nosed profile, was an instant hit and today is an automotive design icon. Maserati had planned to produce only 100 examples of this model, but following the car’s rapturous reception, increased that number to 400. In the end, Ghibli remained in production until the end of **1972**, with 1,295 examples built in coupe and spyder formats. The car followed a tradition pioneered by Maserati with the glorious A6 1500 of **1947**. As a grand tourer, it delivered on the promise of magnificent style, high-powered luxury and peerless comfort over almost any distance the owner wished to travel. It was also, naturally, a car imbued with the motor-racing DNA of Maserati—a remarkably powerful force.

Indeed, well before 1966, Maserati had proven credentials in competition with a host of famous wins. Here are just a few examples. In **1926**, Alfieri Maserati drove the Maserati Tipo 26 to victory in its first-ever race, the treacherous Targa Florio in the mountains of Sicily. In **1939**, Wilbur Shaw won the Indianapolis 500 at the wheel of the Maserati “Boyle Special” 8 CTF at an average speed faster than 115 mph. He then repeated this incredible feat the following year, making Maserati the only European manufacturer to win the Indianapolis 500 two years in a row.

Our latest Ghibli embodies the spirit that shaped both the first incarnation of 1966 and our hunger to innovate, compete and win. Today, that spirit expresses itself through luxury, elegant yet bold design, progressive technology and, of course, empowering performance.





E

A dark, moody photograph of a book with its pages fanned out, set against a black background. The book is positioned on the left side of the frame, with its pages creating a sense of depth and texture. The lighting is dramatic, highlighting the edges of the pages and the spine of the book. The overall atmosphere is mysterious and sophisticated.

EXTERIORS

Singular STYLE

The design of the Ghibli is a study in dynamically sculpted curves and gracefully flowing lines. At the front, the signature grille that bears the Maserati Trident signals both dynamic intent and poised composure. Inspired by the legendary Maserati A6 GCS Berlinetta of the 1950s, the Ghibli features chromed bars that are perfectly integrated into the bumper.



In profile, a host of details create a striking coupe-like appearance. They include frameless doors, muscular rear haunches and the sloping C-pillar design, which incorporates the timeless Saetta logo. The car's sportiness is enhanced by quad chrome exhaust tailpipes—as well as the inspirational words “Maserati” and “Ghibli” in the marque's classic script.



GranSport

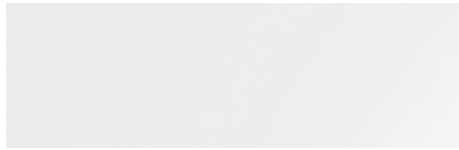
Sophisticated EXTERIOR COLORS

To enhance the eye-catching allure of the Ghibli, Maserati offers a striking complement of paint finishes. Each color reflects a different side of the Maserati personality and captures the boldness and sophistication for which the Trident is renowned.



NERO (Solid Paint)

A black Maserati is synonymous with discipline, independence and strength. It makes a self-assured statement of power, control and authority.



BIANCO (Solid Paint)

White is color at its purest. It is the color of perfection and new beginnings—a blank canvas on which to make your indelible mark.



GRIGIO (Metallic Paint)

Mature and responsible, grey imparts a sense of calm and composure. It conveys in an understated way the awesome power of a Maserati.



GRIGIO MARATEA (Metallescent Paint)

A special grey that is found in the rocks that form Maratea's Cave of Wonders, located along the stunning Tyrrhenian coastline in the south of Italy.



NERO RIBELLE (Mica Paint)

Ever the rebel—Maserati is unconventional, radical and unique, just like this deep and intense black, suggesting dark stone like Italian marble and granite.



BLU PASSIONE (Mica Paint)

A subtle blue for those with a passion for traveling long distances in comfort and style, who are mindful of Maserati's grand touring heritage.



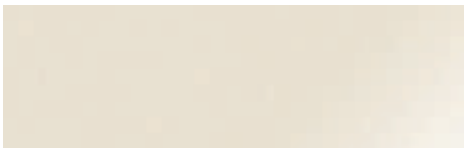
BLU EMOZIONE (Mica Paint)

This brilliant blue expresses the true Maserati soul. It is an emotional link that pays tribute to the color of Bologna, where the company was founded in 1914.



ROSSO FOLGORE (Mica Paint)

A color inspired by Italy's legendary parachute regiment, known as the Folgore—known for their distinctive red berets.



BIANCO ALPI (Tri-coat Paint)

A brilliant, shining white that reflects the purity of the snow-covered Italian Alps, world-renowned for their beauty and sporting allure.



BLU NOBILE (Tri-coat Paint)

This deep, dark blue with sparkling glass flakes glimmers in the sunlight. Evoking nature's tranquility, it complements the flowing lines of the Ghibli.



INTERIORS



DISTINCTIVE INVITATION

The interior of the Ghibli is, in essence, a clearly expressed invitation to travel—in luxurious comfort and with effortless access to the high power at your disposal. In true Maserati grand touring tradition, the cabin is characterized by elegant Italian style, handcrafted finishes and perfectly organized, generously proportioned design. The leather-finished curves, the technical purity of the dashboard, and detailing in metallic-effect Dark Mirror trim simultaneously relax and heighten the senses. Two side panels converge toward an elegantly simple central structure, which houses the traditional Maserati clock, with its blue face and aluminum detailing. Below rests the 8.4-inch touchscreen infotainment system and rotary control, in addition to a convenient storage compartment for a mobile phone and accessories. In front of the driver, the large speedometer and rev counter are separated by a 7-inch TFT display that presents essential dynamic vehicle data. New illuminated cupholders add to the sense of luxury within the cabin.

Even with its head-turning coupe-like proportions, the Ghibli offers ample front legroom, as well as comfortable head and leg space for rear passengers. All seats are covered in carefully selected, meticulously finished leather. In the finest tradition of Italian craftsmanship, they are stitched by hand, while the front headrests are embossed with the Trident logo. Options include the availability of immaculately soft Pieno Fiore natural leather, as well as other indulgent interior trims. Individual adaptability is a Maserati hallmark. That is why, for instance, the front seats of the Ghibli offer 12-way power adjustment and the heated leather multifunction steering wheel features a wealth of adjustment possibilities.





MASERATI
TOUCH CONTROL PLUS

GranTurismo

MAX A/C AUTO AUTO MODE



Drive mode selector buttons: P, R, N, D, S, M, M+, M-.

Handbrake button with "P" symbol.

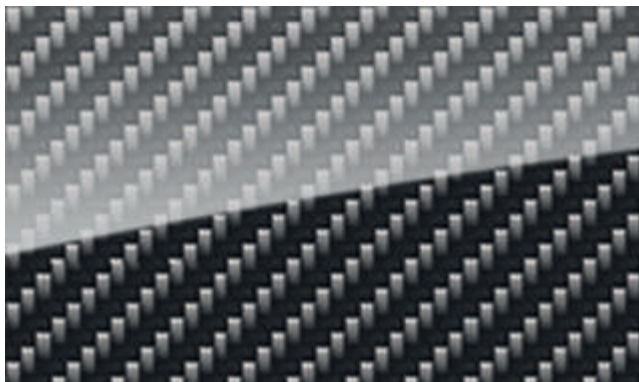


Elegant INTERIOR TRIMS

The purposeful ambience of the cabin is another aspect that sets Maserati apart. Lavish available interior trims add to the appeal of this sanctuary and further increase the options for personalization. Among them are these two premium selections.

HIGH-GLOSS CARBON FIBER TWILL

Developed to emphasize the sporty nature of Maserati, this tactile trim has a glossy top coat that presents a textured, three-dimensional look and adds further exclusivity to the cabin. Every car is completely unique as the carbon pattern is real, ensuring that it will be slightly different every single time. The other beauty of carbon is its extraordinary natural strength, which prevents the trim from marking and protects the integrity of the Ghibli interior.



HIGH-GLOSS ROVERE VENEER

As with other select Maserati trims, this complex veneer took around a year to develop from original concept to finished product. It is a combination of three different woods layered and then crafted by artisans in Italy. The tree bearing the Rovere wood is the symbol of one of the most powerful Italian families, and it is the fine stripes and glossy top coat that give this trim its highly distinctive appearance.



Pieno Fiore NATURAL LEATHER BEYOND COMPARE

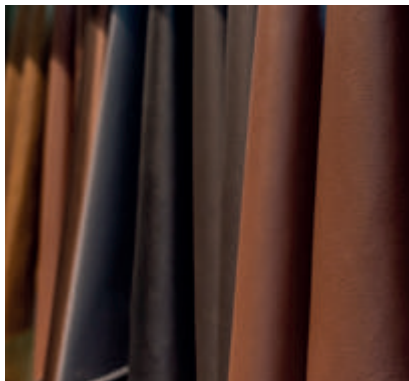
All leather is not created equal. Pieno Fiore natural leather offers quality and durability, with an extraordinary softness to the touch.

An option for Ghibli GranLusso and GranSport, Pieno Fiore leather—sourced especially for Maserati—is highly desirable for its subtle texture, aroma and ability to take on a beautiful patina over time.

This natural leather comes from the hide of bulls reared in the mountains of Northern Europe, at an altitude where there are few insects and no fences with spikes to blemish the pristine

hides. Available in black, red or tan—with a distinctive stitching pattern on the seats and door panels—Pieno Fiore is colored by a special process inside iroko hardwood barrels to bring out the most natural nuances in the finished product.

The raw material is crafted for six long weeks before the leather is ready to be delivered to our production plant. It is this painstaking attention to detail that sets our leather—and our cars—apart.







GRAN DUO

Ghibli Gran Lusso
FOR THE LOVE OF LUXURY



The GranLusso trim builds on the appeal of Ghibli with chromed bumper inserts, body-color side skirts, the GranLusso badge on the front fenders and 19-inch Poseidone alloy wheels with black brake calipers. The standard hands-free power trunk lid with kick sensor allows you to open the trunk by simply moving your foot under the rear bumper. Meanwhile, the standard Driver Assistance Package provides quiet confidence whether in the city or on the highway.





Opulence **WITH AN EDGE**

The Ghibli GranLusso interior encompasses unmatched levels of luxury and convenience, featuring comfortable ventilated front seating with 12-way power adjustment and memory function, as well as a choice of full premium leather, Pieno Fiore natural leather or the standard Ermenegildo Zegna silk upholstery, each complemented by open-pore Radica wood trim. The heated, power-adjustable steering wheel is also finished in leather and fine wood. Other luxuries include the 900-watt, 10-speaker Harman Kardon Premium Audio System, rear laminated glass and an electrically lockable, PIN-protected passenger glove box.



European model shown.





MASERATI

exclusively for

ERMENEGILDO ZEGNA

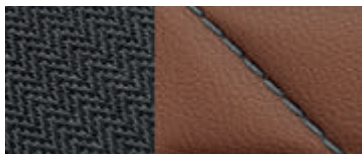
MASERATI

exclusively for

Mulberry

SILK BY ERMENEGILDO ZEGNA

The Ghibli GranLusso is crafted for individuals who desire higher levels of luxury—which is why this model features a remarkable interior, styled and crafted by Ermenegildo Zegna, one of Italy's most celebrated fashion designer brands. The finest leathers are combined with Zegna's mulberry silk inserts on the seats, door panels, headliner and sun visors. The silk is embellished with a hand-stitched micro-chevron pattern, while the seating features a central silk insert with a macro-chevron weave. All this is available in three combinations of leather and silk with contrast stitching. Other GranLusso cabin refinements include a heated leather and wood steering wheel, wood trim, ventilated front seats and soft-close doors, as well as available four-zone climate control.



Tan Premium Leather/
Dark Grey Zegna Silk
with Light Grey
Contrast Stitching



Red Premium Leather/
Dark Grey Zegna Silk
with Light Grey
Contrast Stitching



Black Premium Leather/
Dark Grey Zegna Silk
with Light Grey
Contrast Stitching





GranLusso

Ghibli Gran Sport

SPORT TAKES CENTER STAGE



For an even sharper sporting edge, there's the Ghibli GranSport. It comes equipped with a sport front fascia with Piano Black inserts, GranSport badges on the front fenders, and 20-inch Urano machine-polished alloy wheels with red brake calipers.

An optional Full Carbon Fiber Kit for the GranSport is another tempting personalization. This includes carbon fiber door handles, exterior door mirrors, B- and C-pillar covers, front splitter and rear spoiler. Both the GranLusso and GranSport trim options, meanwhile, offer the high-tech style and safety of Adaptive Full LED headlamps. The enhanced headlight technology continuously adjusts the high and low beams, ensuring a comfortable driving experience.





Take THE RACING LINE

Enhancing the atmosphere of its dynamic interior environment, the GranSport features body-hugging sport seats with 12-way power adjustment and memory function, a grippy heated sport steering wheel, aluminum column-mounted paddle shifters and Inox sport pedals. Also available in the GranSport is an Interior Carbon Fiber Kit, which adds lightweight, tactile carbon fiber to the gearshift paddles, door sills and interior trim.



European model shown.







GranSport



F

ENGINES



Two CHOICES, ENDLESS POSSIBILITIES

At the heart of every Maserati is an engine that offers the ability to cover long distances at dynamic speed, with ultimate refinement. In the Ghibli, the power that delivers this excitement comes from a choice of two engines.

Nothing matches the exhilarating engine note of a Maserati, and the Ghibli delivers with high-capacity power. Each inspired 3.0-liter, twin-turbocharged V6 is engineered to perform—and sound—like no other engine in the world. A lightweight exhaust system with bypass valves ensures that the Ghibli's voice is delivered to maximum effect. With Sport mode active—which also sharpens the vehicle's handling parameters—the valves open, providing the shortest, highest-energy route for the exhaust gases. The result is optimized performance and that unmistakably resonant, spine-tingling sound.

345 HP TWIN-TURBO V6

The V6 engine in the Ghibli delivers 345 hp at 5,500 rpm and a peak torque of 369 lb-ft between 4,500 and 5,000 rpm. In overboost mode, peak torque is available between 1,750 and 4,500 rpm. The sprint from 0 to 62 mph is dispatched in just 5.5 seconds, and the top speed is an impressive 166 mph.

424 HP TWIN-TURBO V6

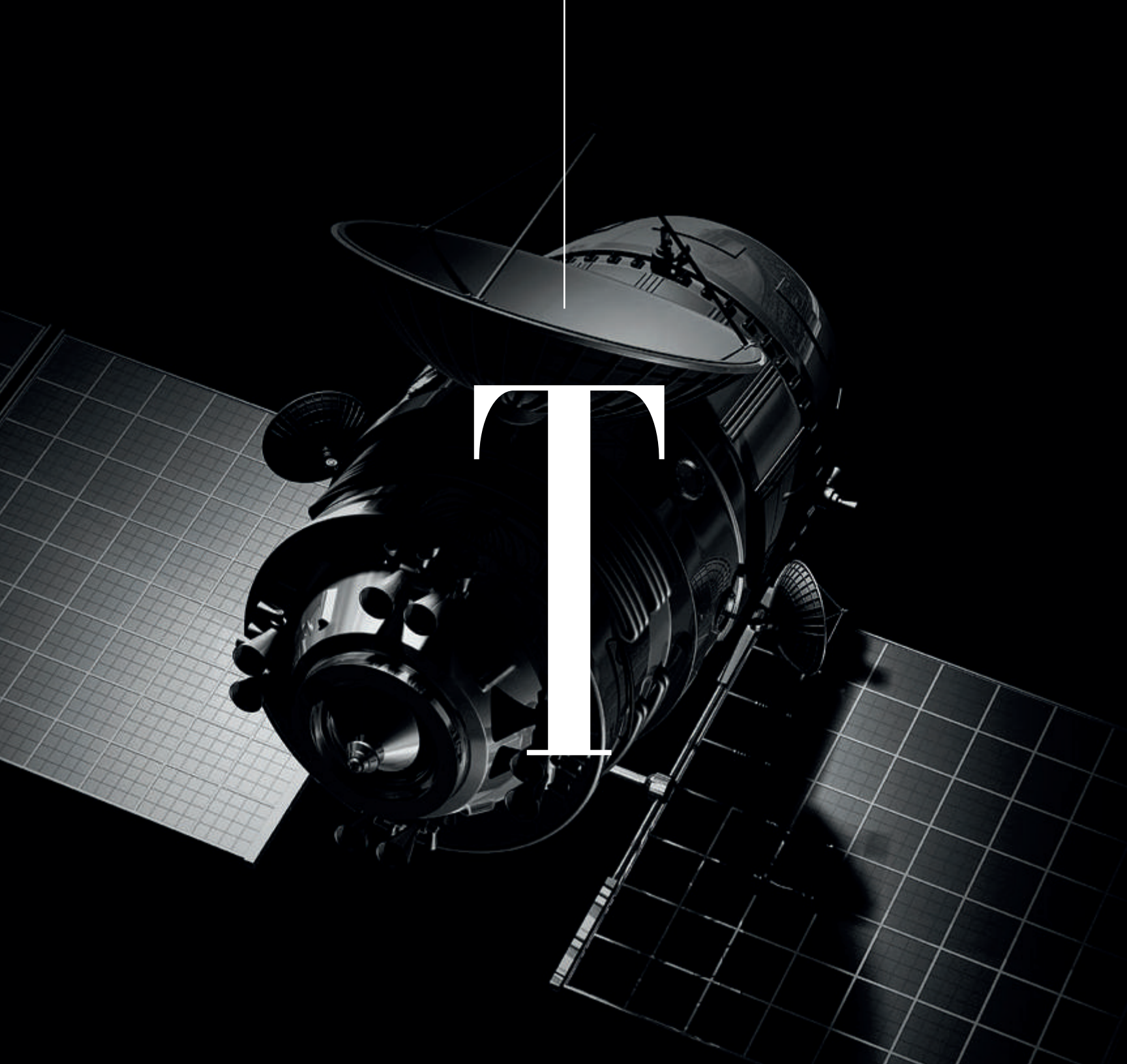
The Ghibli S and Ghibli S Q4 are equipped with the most powerful version of the Maserati V6 engine. Maximum output has been raised to 424 hp and is delivered at 5,750 rpm. With overboost active in Sport mode, peak torque of 428 lb-ft is on tap between 2,250 and 4,000 rpm. That means remarkable driving flexibility and performance. The sprint from 0 to 62 mph is accomplished in 4.9 and 4.7 seconds respectively, and both versions achieve a top speed of 178 mph.



European model shown.



GranSport



TECHNOLOGY



GranLusso

Sophistication **AND EXHILARATION**

The sophisticated ZF eight-speed automatic transmission in the Maserati Ghibli puts a vast world of possibilities in the palm of your hand—and, if tempted, your fingertips.

The advanced design of the ZF eight-speed automatic transmission ensures precise gear changes and optimum performance, putting the power of the Ghibli engine under your complete control. Thanks to auto-adaptive software, the transmission modifies its shift patterns according to driving style, for an even more rewarding, one-to-one driving experience. When it comes to long, high-speed journeys, the last two gears, seventh and eighth, are specially calibrated for optimal efficiency and to further increase comfort. The transmission sends power to the rear wheels of all Ghibli versions via a standard mechanical limited-slip differential. This ensures superb traction in even challenging situations. A new gear lever design offers effortless operation, with separate lanes for RND and manual selection. With only one setting per lane in each direction, the shorter travel enhances engine responsiveness. A dedicated Park button on the lever adds to the convenience. For maximum driver involvement, there are five operating modes, selected using the buttons near the gear lever: Auto Normal, Auto Sport, Manual Normal, Manual Sport, and Increased Control & Efficiency (I.C.E.). Upshifts are all automatic unless a manual mode is selected.

AUTO NORMAL MODE

This default mode provides smooth gearshifts at low revs to maximize ride comfort and minimize fuel consumption. When the system recognizes a sportier style of driving, upshifts automatically occur at higher engine speeds.

AUTO SPORT MODE

In this mode, gearshifts take place in less than 100 milliseconds and occur at higher revs to deliver a near-seamless flow of exhilarating high power and a sportier driving experience. Auto Sport mode also initiates overboost to access peak torque at far lower engine speed. Integrated Vehicle Control (IVC) adds to the excitement, giving the driver even more dynamic control.

MANUAL NORMAL MODE

This mode allows drivers to change gears using the lever on the center console or via the optional column-mounted paddle shifters. Upshifts occur automatically when approaching the rev limiter, and downshifts occur based on the recognized driving style.

MANUAL SPORT MODE

In Manual Sport mode, the driver takes full command of the transmission. The overboost function activates for maximum performance, gear changes are quicker and sharper, and the engine can be pushed to the redline without the system intervening. The only automatic feature is downshifting if engine revs drop too low.

I.C.E. (INCREASED CONTROL & EFFICIENCY) MODE

This mode ensures better control in all weather conditions, the most comfortable and quietest engine response, and maximum fuel efficiency.

The Maserati logo, featuring a stylized trident symbol on the left and the word "Maserati" in a large, elegant script font. Below "Maserati", the word "DYNAMICS" is written in a bold, uppercase, sans-serif font.

Maserati DYNAMICS

Thanks to a host of intelligent systems, the long road ahead—with its twists, turns and occasional surprises—is there for the taking in the Maserati Ghibli.

Q4 INTELLIGENT ALL-WHEEL-DRIVE SYSTEM

The Ghibli S Q4 is a perfect choice for drivers seeking the dynamic rewards of rear-wheel drive with the advantages of Maserati Q4 intelligent all-wheel-drive traction. In normal conditions, the Q4 system sends all of the torque to the rear wheels, delivering exciting Maserati driving dynamics and optimal efficiency. If traction is lost during sudden acceleration or limited rear-axle grip, Q4 can alter the torque split from 100 percent rear-wheel drive to 50:50 between the front and rear wheels. In an imperceptible 150 milliseconds—less than the blink of an eye—the Q4 system can intelligently apply power to maximize grip.

SKYHOOK PERFORMANCE SUSPENSION WITH ELECTRONIC DAMPING CONTROL

The Ghibli GranSport features Skyhook Performance Suspension as standard, with shock absorbers delivering continuous damping variation. The system uses sensors that monitor the movement of each wheel and the car's body to determine present road conditions and driving behavior. The system then instantly adjusts individual damper settings accordingly. The basic setting prioritizes ride comfort, but simply pressing the Skyhook Sport Setting button on the Drive Mode control immediately firms up the shock absorbers for more dynamic handling.

ELECTRIC POWER STEERING (EPS)

Every Ghibli features EPS as standard, delivering handling response and road feel that is such an important part of our Maserati DNA. With EPS, effort required for steering is adapted according to speed. When maneuvering in a tight spot, steering is lighter and easier to turn, but it has a weightier, more connected feel at high speeds. The system is particularly efficient, being powered directly by the engine and, without the need for a hydraulic pump and pressurized fluid, requires less maintenance. The system also integrates with active Advanced Driving Assistance Systems such as Highway Assist¹, Lane Keeping Assist² and Active Blind Spot Assist.³

INTEGRATED VEHICLE CONTROL (IVC)

Driving dynamics are enhanced by IVC, which proactively addresses issues that could result in vehicle instability and counteracts them in the blink of an eye. The system works by selectively reducing engine torque and applying brake force to individual wheels as required. Out on the open road or through sweeping twists and turns, the result is increased control, greater driving enjoyment and potentially higher speeds.

¹ HAS requires the driver to keep his or her hands on the steering wheel at all times. This system is a driver's convenience system, not a substitute for active driver involvement. The driver must remain aware of traffic conditions and maintain control of the vehicle. ² This system is a driver's convenience system, not a substitute for active driver involvement. The driver must remain aware of traffic conditions and maintain control of the vehicle. ³ Always check visually for vehicles prior to changing lanes.



GranSport

Innovation FOR A CONNECTED WORLD

A cutting-edge infotainment package puts the focus on intuitive engagement, real-world assistance and adaptable enjoyment.

The interior of the Ghibli is built around a driver interface that is intuitive, uncluttered and simple to use. The instrument cluster features large analog gauges for the tachometer and speedometer, alongside a 7-inch TFT display. Major dynamic functions are incorporated into the buttons alongside the gearshift, while other on-board settings can be adjusted using the Maserati Touch Control Plus (MTC+) infotainment system at the center of the dashboard, or via the steering wheel controls for the 7-inch TFT display.

MASERATI TOUCH CONTROL PLUS (MTC+)

The 8.4-inch MTC+ unit takes pride of place at the center of the Ghibli dashboard. Using it is intuitive and easy, thanks to a minimalist layout and a highly responsive interface designed to help the driver maintain focus on the road ahead.

The MTC+ can be operated in three ways: via the multi-touchscreen interface, the rotary control in the central console, or through voice commands. The system incorporates the car's

radio, Bluetooth®, and satellite navigation system along with connections to external sources such as mobile phones, tablets and laptop computers.

Passengers can play music using the aux-in port, USB ports¹ or SD card reader. In addition, MTC+ controls the front-seat heating, as well as the ventilation, steering-wheel heating and the rear sunblind (where fitted). When the Ghibli is backing up, the rear-view camera and grid lines are shown on the center screen display.

The state-of-the-art MTC+ system also supports Apple CarPlay® and Android Auto™ mirroring functions.^{2,3} In addition, iPhone® users also benefit from Apple's Siri® personal assistant, allowing them to carry out tasks like placing phone calls, accessing music or messages, reading emails or viewing websites—all via voice commands.⁴

¹For supported file formats, refer to the USB Port section of the owner's manual or DVD. ²Apple CarPlay®: Requires compatible iPhone®. See dealer for phone compatibility. Data plan rates apply. Vehicle user interface is a product of Apple®. Apple CarPlay is a trademark of Apple Inc. iPhone is a trademark of Apple Inc., registered in the US and other countries. Apple terms of use and other privacy statements apply. ³To use Android Auto on your phone screen, you will need an Android phone running 5.0 (Lollipop) or higher and the Android Auto app. Android and Android Auto are trademarks of Google, LLC. ⁴Requires an iPhone® with Siri®. Certain features are not available while the vehicle is in motion. iPhone must be within active cellular range. Customer's existing iPhone data rates apply to internet-supported features.



MASERATI
TOUCH CONTROL PLUS

Ghibli

MAX
A/C

AUTO

AUTO

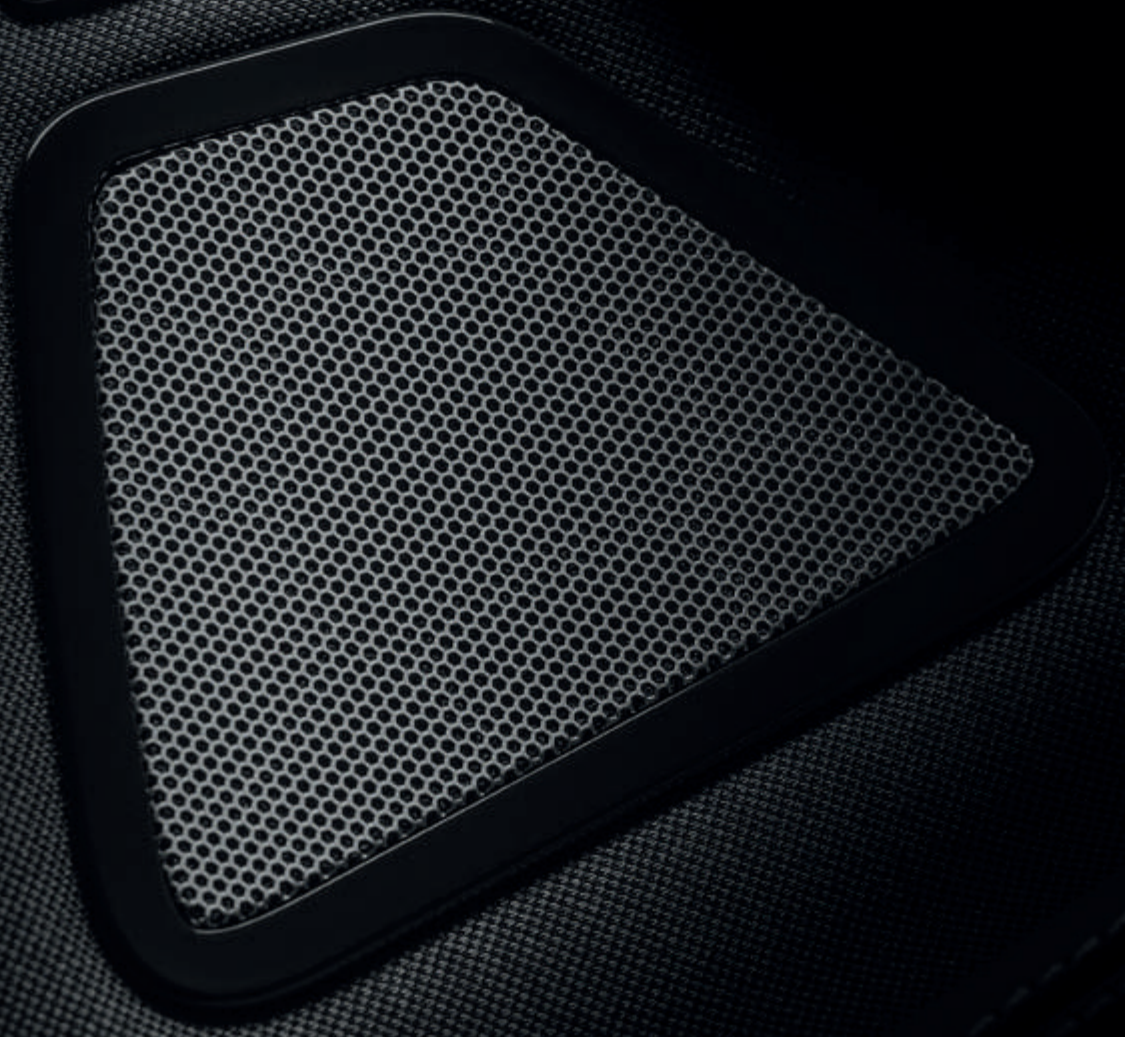
P
R
N
D
M
+





THE SOUND OF QUALITY

Bowers & Wilkins



World-Class AUDIO ENTERTAINMENT

The Ghibli is offered with a choice of three audio systems. A powerful 280-watt, eight-speaker package is fitted as standard and sets the bar at an impressively high level. True audio aficionados can upgrade to one of two outstanding options: the 10-speaker Harman Kardon Premium Audio System (standard on the GranLusso and GranSport) or the 15-speaker Bowers & Wilkins Surround Sound System.

HARMAN KARDON PREMIUM AUDIO SYSTEM

The optional Harman Kardon Premium Audio System offers an elevated level of audio refinement, with every facet tailored to complement the Ghibli's stunning interior. To achieve this, Harman Kardon sound engineers worked very closely with the development team at Maserati. At the core of the system is a state-of-the-art, 900-watt amplifier, delivering rich and detailed sound quality via the radio, MP3 player, iPhone® or audio streaming device. A total of 12 independent channels are deployed for superb balance within the cabin. A high-performance subwoofer handles the low-end frequencies with ease, while the mid-range drivers and tweeters ensure that every instrument and every artist can be appreciated to the fullest. Ten high-powered speakers are carefully distributed throughout the interior to guarantee sublime sound for all on board.

BOWERS & WILKINS SURROUND SOUND SYSTEM

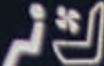
This magnificent audio package is the product of 50 years of Bowers & Wilkins' extensive research and development in the field of psychoacoustics—the science of how people react emotionally to sound—to this magnificent audio system. Fifteen high-end speakers, with mid-range drivers and rear woofers made from aramid fibers, have been strategically built into the car's architecture, while a 1,280-watt amplifier ensures immersive sound. Advanced aluminum tweeters capture the faintest audio subtleties, while Rohacell® drivers assure deep, resounding bass. The system features QuantumLogic™ Surround Sound Technology, which digitally remodels signal streams and reconstructs the original recording of a musical piece. In addition, the Clari-Fi function automatically restores detail lost in digitally compressed music. The Ghibli's Bowers & Wilkins system is compatible with most disc formats and features a built-in USB port for a smartphone or MP3 player. Alternatively, tracks can be streamed directly via either Bluetooth®, Apple CarPlay® or Android Auto™.^{1,2}

¹ Apple CarPlay®: Requires compatible iPhone®. See dealer for phone compatibility. Data plan rates apply. Vehicle user interface is a product of Apple®. Apple CarPlay is a trademark of Apple Inc. iPhone is a trademark of Apple Inc., registered in the US and other countries. Apple terms of use and other privacy statements apply. ² To use Android Auto on your phone screen, you will need an Android phone running 5.0 (Lollipop) or higher and the Android Auto app. Android and Android Auto are trademarks of Google, LLC.






SAFETY

68° 

91° out. E

4:50

FM 90.5

 68

Controls



Lane Keeping Assist

VISUAL & HAPTIC



Auto High Beam Assist

Start & Stop Off 



Active Blind Spot Assist

VISUAL & ACOUSTIC



Privacy Lock

Surround Camera 



Forward Collision Warning

ACTIVE BRAKE: ON



Screen Off

Key Fob 



Traffic Sign Assist

BLINKING: OFF

Setup 



Radio



Media



Controls



Climate



Nav



Phone

AUTO



Advanced DRIVING ASSISTANCE SYSTEMS

The Ghibli is equipped with a comprehensive range of Advanced Driving Assistance Systems. These innovative safety features offer greater peace of mind, whether you're on a continent-crossing grand tour or dashing across town.

HIGHWAY ASSIST SYSTEM (HAS)

Combining the virtues of Adaptive Cruise Control with Stop & Go and Lane Keeping Assist, HAS makes life easier while driving on highways, achieving Level 2 semi-autonomous driving.¹ Using information picked up from a digital camera behind the rear-view mirror and a radar system in the front grille, HAS automatically keeps the vehicle centered in its lane, at a preselected speed and at a chosen distance from the vehicle ahead, and will decelerate the Ghibli as traffic conditions dictate. To help ensure safety, HAS requires the driver to keep his or her hands on the steering wheel at all times.

TRAFFIC SIGN RECOGNITION

While monitoring two types of signage—speed limits and temporary speed limits due to conditions such as heavy rain—the Traffic Sign Recognition system displays updated signs digitally in the gauge cluster.² The system works with a digital camera mounted behind the rear-view mirror in conjunction with navigation system data.

LANE DEPARTURE WARNING SYSTEM

Using a camera in the rear-view mirror to monitor road markings ahead, this system helps drivers keep the vehicle in the chosen lane on highways and main roads.³ This system helps reduce lane drift and the possibility of lateral collisions by warning when the vehicle crosses lane markings without the turn signal activated. Activation of the turn indicator overrides the system.

LANE KEEPING ASSIST (LKA)

This system provides valuable support if the driver is about to unintentionally leave a lane.³ A digital camera behind the rear-view mirror monitors road markings to communicate the status of the course ahead. The instrument panel display shows the specific status: White lines on either side of the vehicle image indicate that it is safely in the lane. One yellow line indicates that the Ghibli is moving off-center, right or left. One flashing yellow line warns of lane departure. If the Ghibli appears to be moving out of the lane unintentionally, and the Visual & Haptic box is selected on the touchscreen display, LKA actively steps in with corrective steering torque.

ACTIVE BLIND SPOT ASSIST

With this system, a warning icon appears in the door mirrors when a vehicle enters the driver's blind spot.⁴ Three levels of support can be selected if the driver nonetheless initiates a lane change: The system will maintain a visual alert in the door mirrors; the alert is supported by an acoustic warning; or the system intervenes with steering assistance. The intensity of this assistance is also adaptable according to preference.

¹ HAS requires the driver to keep his or her hands on the steering wheel at all times. This system is a driver's convenience system, not a substitute for active driver involvement. The driver must remain aware of traffic conditions and maintain control of the vehicle. ² Traffic Sign Recognition is not a substitute for safe and attentive driving. Factors including weather and condition of the traffic sign can impact recognition and display of the sign. Always check traffic signs visually while driving. ³ This system is a driver's convenience system, not a substitute for active driver involvement. The driver must remain aware of traffic conditions and maintain control of the vehicle. ⁴ Always check visually for vehicles prior to changing lanes.

SURROUND VIEW CAMERA

This system provides a clear 360-degree view around the vehicle to assist with parking and highlighting otherwise hidden obstructions.¹ Cameras beneath the door mirrors, plus front and rear cameras, capture images shown on the center display screen.

ADAPTIVE CRUISE CONTROL WITH STOP & GO

Adaptive Cruise Control constantly monitors the vehicle ahead, maintaining a pre-set distance.² With the Stop & Go function, the vehicle will also adjust to the speed of the vehicle in front until it comes to a complete stop, provided the stop takes less than three seconds.

FORWARD COLLISION WARNING PLUS

This system, in combination with Adaptive Cruise Control, monitors vehicles ahead and warns if the approach could result in a rear-end collision.³ If the warning does not prompt any action from the driver, the Autonomous Emergency Braking (AEB) system automatically applies the brakes to reduce vehicle speed. The system is linked to the Advanced Brake Assist System, which provides additional braking during an emergency stop.³

REAR CROSS PATH FUNCTION

This system emits a warning when an unseen vehicle is approaching, from the right or left, while the driver is reversing out of a parking space.¹

FRONT AND REAR PARKING SENSORS AND REAR-VIEW CAMERA

To assist with maneuvering in tight spaces, the Ghibli comes equipped with parking sensors in the front and rear bumpers.⁴ Beeping noises increase in frequency as the obstacle approaches. Additionally, the TFT display at the center of the instrument panel shows the car surrounded by symbols in green, yellow or red, depending on the remaining distance. In addition, an optional rear-view camera, fitted close to the trunk lock, shows a view of what is behind the car, on the infotainment screen. Dynamic grid lines illustrate the maximum width of the vehicle and its projected path, based on the steering angle of the front wheels.

¹ Always check entire surroundings visually before proceeding. ² This system is a driver's convenience system, not a substitute for active driver involvement. The driver must remain aware of traffic conditions and be prepared to use the brakes to avoid collisions. ³ This system is an alert system for the front of the vehicle. It is not a substitute for active driver involvement. The driver must remain aware of traffic conditions and be prepared to use brakes to avoid collisions. ⁴ Always look before proceeding. An electronic drive aid is not a substitute for conscientious driving. Always be aware of your surroundings.



Maserati

GH 157 MA

GranSport

500

GranSport



Gran Lusso

245/40 ZR20 (88Y)



Pirelli

Pirelli

Comprehensive SAFETY

Maserati engineers have made safety a top priority when designing the Ghibli, which combines mile after mile of high-powered driving excitement with the benefit of a variety of driving assistance and safety systems.

MASERATI STABILITY PROGRAM (MSP)

Developed under extreme testing conditions, the Maserati Stability Program (MSP) employs an array of sensors to constantly monitor driving conditions, while utilizing a host of safety and performance systems to maintain handling and grip.* If, for instance, a skid is detected, MSP selectively reduces engine torque and can activate the brakes with finely varied inputs to help restore stability within milliseconds.

The MSP system also works in conjunction with features like Anti-Slip Regulation (ASR), which reduces wheel spin and improves traction, and engine brake torque control (MSR), which prevents the wheels from locking during sudden downshifts. Additionally, the Anti-Lock Braking System (ABS)

reduces wheel lockup and Electronic Brakeforce Distribution (EBD) distributes brake force evenly between the front and rear axles. Further support is provided by the Brake Assistance System (BAS), which responds to emergency stops by boosting pressure in the hydraulic circuit to maximize stopping power. The Hill Hold function keeps the vehicle from rolling backward when the driver sets off on an uphill slope.

TIRE PRESSURE MONITORING SYSTEM (TPMS)

This standard system continuously monitors tire pressure using a sensor integrated with the tire valve, which can be read on the dashboard display. In the case of a puncture or a change in tire pressure, the system notifies the driver with visual and acoustic warnings.

*Always drive carefully, consistent with conditions. Always wear your seat belt and obey traffic laws.



ADAPTIVE FULL LED HEADLAMPS WITH AUTOMATIC HIGH BEAM ASSIST

The GranLusso and GranSport are fitted with Adaptive Full LED headlamps that further sharpen the Ghibli's striking appearance, significantly improving visibility and lowering energy usage. They also offer remarkably long bulb life. With 15 LEDs operating at full beam, these headlamps offer a greater field of vision than traditional halogen lights. Road illumination extends, with roughly double the bulb longevity.

Automatic High Beam Assist provides increased forward lighting at night by automating high beam control through the use of a forward-facing digital camera located behind the rear-view mirror. This camera detects environmental luminosity, the headlamps of oncoming vehicles and the tail lamps of proceeding vehicles in the front area. In these cases, the system automatically switches from high beams to low beams until the approaching vehicle is out of view.

ADAPTIVE DRIVING BEAM (ADB)

This system automatically adjusts the width and depth of the headlight beams, giving maximum lighting effectiveness and optimal safety. This is made possible by a camera mounted in the rear-view mirror and sensors that monitor several different parameters, including the steering wheel position, the car's speed and driving behavior. ADB comes on automatically when driving in bad weather, on highways or in town.

SEVEN AIRBAGS

The Ghibli is equipped with seven airbags. Two front airbags, both dual-stage, offer added protection for the driver and front passenger in the event of collision, while further protection is provided by side and window airbags, as well as one airbag to help protect the driver's legs.*

*Always sit properly in designated seating positions with seat belts securely fastened at all times.

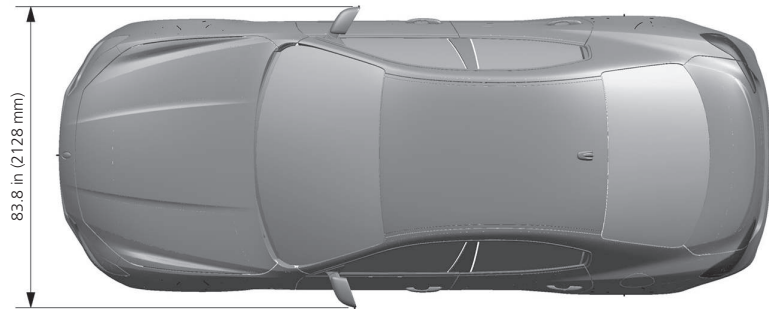
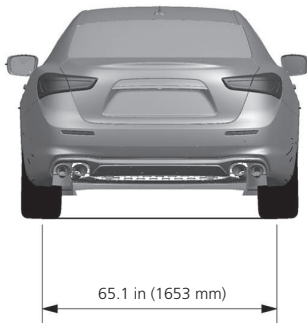
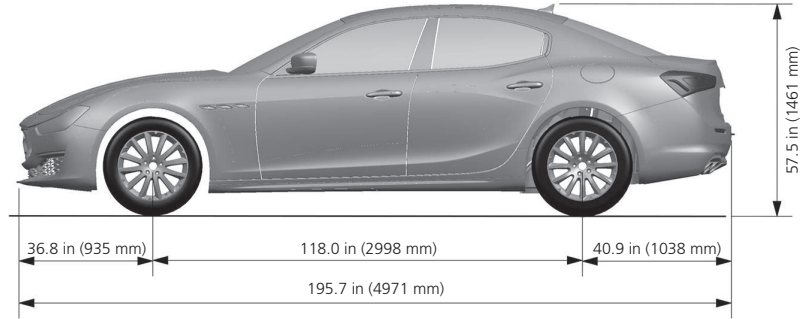
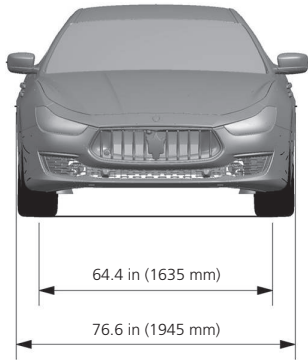




Continental
GranLusso

Ghibli

TECHNICAL SPECIFICATIONS



DIMENSIONS AND WEIGHTS	GHIBLI	GHIBLI S	GHIBLI S Q4
Length	195.7 in (4971 mm)	195.7 in (4971 mm)	195.7 in (4971 mm)
Width (with side mirrors)	83.8 in (2128 mm)	83.8 in (2128 mm)	83.8 in (2128 mm)
Width (without side mirrors)	76.6 in (1945 mm)	76.6 in (1945 mm)	76.6 in (1945 mm)
Height	57.5 in (1461 mm)	57.5 in (1461 mm)	57.5 in (1461 mm)
Wheelbase	118.0 in (2998 mm)	118.0 in (2998 mm)	118.0 in (2998 mm)
Front track	64.4 in (1635 mm)	64.4 in (1635 mm)	64.4 in (1635 mm)
Rear track	65.1 in (1653 mm)	65.1 in (1653 mm)	65.1 in (1653 mm)
Front overhang	36.8 in (935 mm)	36.8 in (935 mm)	36.8 in (935 mm)
Rear overhang	40.9 in (1038 mm)	40.9 in (1038 mm)	40.9 in (1038 mm)
Turning circle	38.4 ft	38.4 ft	38.4 ft
Trunk capacity	17.7 cu ft	17.7 cu ft	17.7 cu ft
Fuel tank capacity	21.1 gal	21.1 gal	21.1 gal
Curb weight	3,990 lbs	3,990 lbs	4,122 lbs
ENGINE			
Number of cylinders and layout	V6 60°	V6 60°	V6 60°
Displacement	3.0 L (2979 cm ³)	3.0 L (2979 cm ³)	3.0 L (2979 cm ³)
Bore	86.5 mm	86.5 mm	86.5 mm
Stroke	84.5 mm	84.5 mm	84.5 mm
Compression ratio	9.7:1	9.7:1	9.7:1
Max. power output	345 hp	424 hp	424 hp
Engine speed at max. power output	5,500 rpm	5,750 rpm	5,750 rpm
Peak torque	369 lb-ft	428 lb-ft	428 lb-ft
Engine speed at peak torque	4,500 rpm	2,250-4,000 rpm	2,250-4,000 rpm
TRANSMISSION			
Transmission	Automatic 8 gears	Automatic 8 gears	Automatic 8 gears
PERFORMANCE*			
Maximum speed	166 mph	178 mph	178 mph
Acceleration 0-62 mph (0-100 km/h)	5.5 s	4.9 s	4.7 s
Stopping distance 62-0 mph (100-0 km/h)	116.5 ft	114.8 ft	114.8 ft
Fuel consumption (combined)**	19 mpg	19 mpg	19 mpg
Fuel consumption (city)**	17 mpg	17 mpg	16 mpg
Fuel consumption (highway)**	24 mpg	24 mpg	24 mpg

*Maserati SpA test results. Actual acceleration results may vary, depending upon specification of vehicle, road and environmental conditions, testing procedures and driving style.

**EPA estimated mpg. Actual mileage may vary.



THE WORLD OF MASERATI

BECOME A MASTER OF DRIVING

MASTER MASERATI DRIVING COURSES

Driving a Maserati on the open road is one of life's most exhilarating experiences. With a Master Maserati driving course, you can quickly find out what happens when you swap the joys of the highway for the intensity of the track or the challenges of a tough off-road circuit.

Master Maserati courses give you free rein to explore the seemingly endless dynamic potential of the entire Maserati model range. They also offer two rare and truly extraordinary opportunities—taking personal charge of the awe-inspiring GranTurismo GT4 racer and experiencing it with a GT world champion at the wheel.

As a Master Maserati driver, you'll discover how all Maserati cars—with their racing DNA—are built to bring out the very best in you as you pursue ever-faster lap times or tackle difficult terrain.

But you won't be going it alone. We provide tailored one-to-one instruction from championship-winning drivers who coach from the passenger seat as you drive, providing a level of personal attention that promises both immersive enjoyment and accelerated learning. The support of advanced technology, such as telemetry and video analysis, helps to further fine-tune your skills.

Master Maserati courses are held at the Varano de' Melegari (Parma) circuit, a track with first-class safety standards and superb on- and off-road facilities nestled in the beautiful Italian countryside.

YOUR INSTRUCTORS

Our expert instructors are international drivers with firsthand experience in elite racing categories such as Formula 1, the World Endurance Championship and the World Rally Championship. The members of the coaching team are all Italian, and they've worked at Master Maserati for many years, combining training at Varano with their own motorsport careers. All in all, including our driving experts, the staff consists of more than 50 people, led by Andrea de Adamich, a highly respected figure in motorsport.

PRACTICE

START YOUR ENGINES AND GET READY FOR YOUR FIRST RIDE INTO THE MASERATI WORLD

The journey to Maserati mastery starts now. Imagine a Formula 1 practice session and then put yourself in the driver's seat. This is, essentially, what happens here. After you've picked up the fundamentals of track driving through one-to-one expert guidance, you'll be out there on the track—enjoying the immediate, exhilarating experience of exploring the performance limits of the Quattroporte, Ghibli, Levante, GranTurismo and GranTurismo Convertible. It's an experience that will make you a considerably better driver and eager for more excitement in the future. You'll also be ready to take the next step up—to Qualifying.

QUALIFYING

MASTER THE ART OF SPEED BEHIND THE WHEEL OF A MASERATI

Progression to the Qualifying stage means raising the intensity in the GranTurismo, Ghibli, Quattroporte and Levante. Just as you would in a qualifying session, you'll be pushing the limits, making mistakes, fixing them—and getting faster—as you master the art of speed in your Maserati. And, of course, your Master Maserati driving expert will be right there by your side, passing on championship-winning knowledge and insight. At this level, we introduce detailed video analysis and vital insights from racing telemetry that will help you fine-tune your skills. These techniques often lead to major improvements in your driving, which you will be eager to build on in the courses to come.

RACE

EXPERIENCE THE RAW EXCITEMENT OF BEING A MASERATI RACING DRIVER—IN THE BREATHTAKING GT4

In this one-day course, you'll be driving a full-blooded racer—the GT4. Before you're strapped into that six-point harness, you will get to know the vehicle inside and out. Then, after expert coaching, you'll be ready to hit the track and discover what the GT4 car really can do—and how far you can take it. There will also be timed, competitive driving. As in professional motorsport, you'll be supported by an expert team, from seasoned mechanics to telemetry experts.

CHAMPIONSHIP

EXPERIENCE AN EXCEPTIONAL CAR: THE GRANTURISMO MC GT4

This is the elite, two-day Championship experience, complete with your own paddock team, personal coach and, naturally, cutting-edge telemetry. You'll even have access to the Ferrari F1 team's MedEx physical therapy specialists. This is essential support, because you'll be driving the awe-inspiring GranTurismo GT4. And that means G-forces far beyond anything your body may have experienced before. You'll also experience hot laps driven by none other than four-time world champion Andrea Bertolini in this iconic racing machine.

RALLY POWER STAGE

DISCOVER AND MASTER THE MASERATI OF SUVs—ON ALL TERRAINS

Get ready to ramp things up, on and off the road. This full-day master class is mainly focused on the remarkably capable Maserati Levante, given its authentic all-terrain credentials. All other Maserati models also feature in this experience, however, and you'll discover how a combination of individual skills and progressive technology keeps you perfectly composed on low-grip surfaces and even the most challenging inclines. When you do venture into the Varano circuit's private nature reserve, the Levante takes center stage. With close guidance from your instructor, you'll take on a host of tasks that showcase the SUV's abilities, while bringing out the best of you as a driver.

MASTER INCENTIVE

TEAM BUILDING, OR EVEN A SPECIAL THANK YOU, DOESN'T GET MORE EXHILARATING THAN THIS

Nothing bonds a team like the exhilaration and spirit of a Master Maserati driving experience. What's more, we can tailor any program to suit the interests and aims of your business or team, and we welcome groups of any size for the number of driving days preferred. For instance, we can provide instruction on the basics of track driving or how to become a racing driver. We offer guidance from expert drivers, one-to-one coaching, video, telemetry recording and the full support of a crew. The driving can also be combined with cultural programs and activities, including a visit to the Panini Motor Museum in Modena, culinary experiences and a Maserati factory tour. For your added convenience, we offer a range of supplementary services, such as organizing hotels and airport transfers.

ARE YOU READY TO MASTER MASERATI?

For information on availability, pricing, timing and registration, please contact us at info@mastermaserati.it.

THE WORLD OF THE TRIDENT

FACTORY TOUR*

Learn about the skills involved in producing some of the world's finest high-performance automobiles by visiting the Maserati factory in Modena. Our 90-minute factory tour includes a welcome reception in our showroom and a presentation of more than 100 years of Maserati heritage. The tour also includes a guided walk around the assembly line, an opportunity to view the finished cars and a chance to browse the Maserati store.

SHOWROOM TOUR (MODENA ONLY)

For those short on time, we offer a 30-minute guided showroom tour. After a welcome reception and a presentation of our illustrious heritage, your guide will take you through the entire model range on display in the Modena showroom. Commentary can be provided in English, Italian, German, French or Spanish. It is also possible to combine the Maserati Factory Tour with a Master Maserati driving course and experience the entire World of Maserati. For reservations or more information, please email factorytour@maserati.com.

FACTORY DELIVERY EXPERIENCE

The first drive in your new Maserati is one to savor—and there's no better starting line than the birthplace of the car itself. Your event begins at the Maserati showroom, where, after a warm welcome from a Maserati representative—including coffee and drinks—you can take a 90-minute tour of the production line, accompanied by a specialist guide and photographer. After the tour, it's time for the unveiling of your car, where you will receive a thorough explanation of its features and sign the documentation to officially take ownership of your new Maserati. Before we bid you farewell, our photographer will capture the occasion with pictures at the Maserati facilities. Please allow between two-and-a-half to three hours for the full experience, including the factory tour.

Delivery locations

All models can be delivered to Modena.

How to book

You can request a factory delivery through your official Maserati dealer when you place your car order. Approximately one month prior to delivery, we will arrange a date for your Factory Delivery Experience.

*Tours are arranged by appointment only and can be booked through dealers all over the world.

MASERATI COLLECTION

The Maserati Collection of branded merchandise is specially designed for those with a passion for all things Maserati. Maserati Collection items are available from all official Maserati dealers and the Maserati showroom stores in Modena and Grugliasco. Alternatively, the items can be purchased online at [maseratistore.com](https://www.maseratistore.com) and delivered directly to you.

MASERATI CLUB

Joining a Maserati Club means sharing insights and exciting experiences with other Maserati owners—and being invited to take part in special motoring events all over the world. Drivers of Maserati automobiles from every era can enjoy the pleasure of driving their cars in a calendar of events created especially for club members. Our Maserati Clubs provide the link between the company's past, present and future. Visit [maseraticlub.com](https://www.maseraticlub.com) for more information.

MASERATI GENUINE ACCESSORIES

Maserati Genuine Accessories for the Ghibli offer the perfect combination of design and functionality. The attention to detail, style and quality of each accessory reveal the very essence of the Maserati brand. The Ghibli accessories range includes special wheel rims and Maserati Genuine Tires. Maserati-branded transport accessories include the Luggage Compartment Mat and Foldable Box, as well as the Ski & Snowboard Bag. Added to the range are care and safety accessories, including stylish car covers, which ensure the Ghibli is perfectly protected. You can discover the full range of Maserati Genuine Accessories in the dedicated brochure, on our official website at [maserati.com](https://www.maserati.com), or through an official Maserati dealer or service center.

MASERATI CLASSICHE

Created for enthusiasts and owners of classic Maserati automobiles, Maserati Classiche is an organization dedicated to those who wish to engage with the marque's glorious past. Maserati Classiche includes an important historical document service dedicated to current owners of classic Maserati cars, a series of celebratory products, clothing, scale models and much more. You can find all the latest items on [maserati.com](https://www.maserati.com) in the Maserati Classic section. For more information, email maserati.classiche@maserati.com.

NORTH AMERICA

USA
Canada

CENTRAL/SOUTH AMERICA

Argentina
Brazil
Chile
Colombia
Costa Rica
Dominican Republic
Ecuador
Guatemala
Mexico
Panama
Perù
Puerto Rico
Uruguay

EUROPE

Andorra
Austria
Belarus
Belgium
Bulgaria
Cyprus
Czech Republic
Denmark
Estonia
France & Monaco
Germany
Greece
Hungary
Israel
Italy
Kazakhstan
Lithuania
Luxembourg
Netherlands
Norway
Poland
Portugal
Romania
Russia
Slovakia
Slovenia
Spain
Sweden
Switzerland
Turkey
Ukraine
United Kingdom

AFRICA & MIDDLE EAST

Bahrain
Egypt
Jordan
Kuwait
Lebanon
Morocco
Oman
Qatar
Saudi Arabia
South Africa
United Arab Emirates

ASIA/OCEANIA

Australia
China
Hong Kong
India
Indonesia
Japan
Malaysia
New Zealand
Philippines
Singapore
South Korea
Taiwan
Thailand
Vietnam



MASERATI CONTACT CENTER: 877.MY.MASERATI | mymaserati@maserati.com
24-HOUR ROADSIDE ASSISTANCE WITHIN THE U.S. AND CANADA: 888.371.1802





The illustrations and texts contained in this brochure are based on information available at the time of production and do not contain a description of specific characteristics of the car by the Manufacturer. Some models, equipment and accessories may not be available or may become available only after the automobile's launch on the market. Maserati reserves the right to modify colors, designs and technical features at any time and without advance notice. Official Maserati dealers will be glad to provide further details and updates in this regard. © 2020 Maserati North America, Inc. All rights reserved. Maserati and the Trident logo are registered trademarks of Maserati SpA. Maserati urges you to obey all posted speed limits.



MASERATIUSA.COM
MASERATI NORTH AMERICA, INC. | 1 CHRYSLER DRIVE | AUBURN HILLS, MI 48326