



MASERATI

QUATTROPORTE



Quattroporte



Quattroporte shown in Grigio. Following is the original Maserati Quattroporte, first launched in 1963.



IN 1963, MASERATI MOUNTED A RACE ENGINE IN A SEDAN AND FOREVER CHANGED THE WAY THE WORLD LOOKED AT LUXURY MOTORING. THE LEGEND OF QUATTROPORTE CONTINUES TODAY.

MARIA TERESA DE FILIPPIS AND MASERATI: RACING'S TRAILBLAZERS

FANGIO TOLD HER, "YOU GO TOO FAST. YOU TAKE
TOO MANY RISKS." SHE WAS HAVING NONE OF IT.

Maserati's success is owed to many things, but perhaps most important is a willingness to take some risks, to try things that stray from conventional wisdom. Maria Teresa de Filippis is a perfect example. Taking up her brothers on a bet in 1948, Maria proved that she could indeed go very fast in a car—after some practice, she won the very first race she entered. A woman driver was extremely rare in those days—even frowned upon—but Maserati knew talent when they saw it

and signed her on as a works driver. She tested new high-performance models and participated in races, including driving the Maserati A6GCS at Targa Florio. A tortuous course set in Sicily's Madonie Mountains, Targa Florio was among the very first auto-racing events and to this day is still considered one of its most challenging. With an extraordinary number of corners, sheer drops and obstacles, those who endured and came out on top at Targa Florio are still recognized today as the world's best drivers and automakers—Maserati and Maria set the bar. Those around her, including the world champion Juan Manuel Fangio, advised Maria to slow things down, to play it safer. Apparently Maria, like the Maseratis she loved, didn't take that advice. The rest is history.







WHAT HAPPENS WHEN A RACING PEDIGREE INSPIRES YOU?
YOU END UP WITH AUTOMOBILES THAT ARE ALTOGETHER INSPIRING.



AT THE WHEEL OF HER MASERATI 250F, DE FILIPPIS MADE MORE THAN HISTORY AS THE FIRST WOMAN TO COMPETE IN FORMULA ONE. SHE MADE HER MARK ON BOTH A BRAND AND A SPORT.



THE UNMISTAKABLE INFLUENCE OF A LEGENDARY RACING HERITAGE.

A first impression of Quattroporte may center on its opulent amenities. Once behind the wheel, however, its true sporting pedigree becomes abundantly clear. Maserati was born a maker of race cars more than a century ago. There are many moments from that racetrack history that live on to this day. As the fastest production car ever built by Maserati, the aim of Quattroporte is simple: to make each drive an unforgettable experience.





*Quattroporte GTS shown in Bianco with 20-inch GTS Antracite forged alloy wheels.
Aside, the Maserati Tipo 63 racer.*





Audi

Quattroporte

A8L



FROM RACETRACKS TO THE OPEN ROAD

THE GREATEST RACES LAUNCH FROM A STANDING START.
THAT'S THE APPROACH WE TAKE TO EVERY MORNING'S
DRIVE IN THE WORLD OF MASERATI.

Since its remarkable debut in 1963, Maserati Quattroporte has expressed the marque's proud history of technological innovation, unmistakable design and hard-fought racing success. The first of the Italian automakers to pair sports-car sensibilities with luxury-car space and comfort, Maserati continues to offer a rare mix of elegance and performance with this sixth-generation Quattroporte series. Taking cues from its original Pietro Frua design, the vehicle's generous size is streamlined with artful lines. Accessibility is paramount; its namesake four doors graciously welcome driver and passengers into a sumptuous interior worthy of a private club. Of course, that opulence also applies to its 3.8-liter V8 powerplant, which ensures there is a lavish amount of power to usher this vehicle and its occupants nimbly, even during daily commutes that rival Targa Florio. It is for those drivers whose lifestyle finds them on the highway but whose hearts are at the racetrack...Quattroporte truly is the best of both worlds.



ELEGANCE TAKES FLIGHT. THE SKY IS THE LIMIT.



Poltrona Frau® drilled leather interior in Sabbia.



EXTERIOR DESIGN

CRAFTED BY SCULPTORS.
OWNED BY CONNOISSEURS.

For all its power and technical prowess, it is unmistakable Italian design that sets Maserati Quattroporte so clearly apart. Like a work of fine sculpture, its sweeping, sleek lines strongly express the underlying passion that has long been associated with this carmaker and its devoted drivers. The focal point of this modern-day masterpiece is its signature Maserati oval grille. As tradition dictates, the Trident badge stands out on the grille, highlighted with red accents. Headlamps merge seamlessly into the lines that shape the car's side.

A sequence of muscular curves starts from the trademark triple air vents located behind the front wheels and continue to the wraparound rear light clusters. The model's familiar triangular C-pillar is another nod to Quattroporte's innate sporting character, as is the integral rear deck spoiler, which generates downforce at high speeds. In all, this impeccable design not only reflects the marque's rich, century-old history, but Italy's age-old arts tradition, as well.













20-inch GTS Antracite forged alloy wheel with anodized red caliper.



Poltrona Frau leather interior in Rosso.

INTERIOR DESIGN

IT IS CRAFTED TO REWARD ALL OF THE SENSES WITH EXCITEMENT.

Since its inception, Quattroporte has been the consummate host, going above and beyond in efforts to ensure the comfort of its guests. So it goes without saying that only the finest will do: Poltrona Frau leather, fine wood and available handcrafted contrast stitching all create a wonderful first impression. Beyond that, the Poltrona Frau leather front seats offer outstanding comfort and provide excellent lateral support when cornering enthusiastically. In addition, the all-electric adjustment ensures that the perfect driving position is easy to achieve in terms of height, reach and seatback angle, along with four different lumbar settings. For the ultimate in driving comfort, the GTS model is standard equipped with electrically adjustable pedals, and the option is available for S and S Q4 models. Particular attention has been focused on the occupants of the rear seats. The standard version comes with a comfortable rear bench seat for three people, complete with a central armrest. Alternatively, as an option, the car can be specified with two ventilated, electrically adjustable single seats for total relaxation on long journeys.



Black Piano trim shown.



INTERIOR DESIGN

FOR THOSE WHO EXPECT THE WORLD
TO BE WITHIN REACH: A COCKPIT
THAT DELIVERS ON EVERY PROMISE.

In the driver's seat, there is a feeling of total confidence and command. Comfort is not a subjective impression but a fact, thanks to the special attention paid to the onboard spaciousness and the arrangement of seats. Intuitive controls are subtly positioned so as not to detract from the overall design of the interior, the tactile surfaces and the high quality of the materials. The spaciousness of Quattroporte is enhanced with the sleek lines of the broad dashboard, the central tunnel and the doors, enveloping all onboard in an atmosphere of complete luxury. The driver's controls are operated by a cluster of buttons on the central tunnel, beside the gear lever. A very special clock that bears the Maserati Trident complements the Quattroporte's unique dash layout.





European model shown.



Poltrona Frau drilled leather interior in Nero with Rosso contrast stitching.



HARMAN KARDON PREMIUM SOUND SYSTEM

For music connoisseurs seeking more power, more dynamism and an extra dimension of emotional realism, the new Harman Kardon Premium Sound System, standard for all versions, brings new levels of audio refinement to the Maserati Quattroporte. Utilizing the very latest in digital technology, a state-of-the-art 900-watt amplifier is at the heart of this system, delivering stupendous sound quality, whatever the source: radio, CD, iPhone® or any other similar device. Twelve independent channels are employed, providing a truly inspirational experience that releases all the subtle nuances of the original recording. With ten high-powered speakers carefully positioned throughout the cabin, the system produces 360 degrees of sublime sound reproduction irrespective of where the listener is seated. A special high-performance subwoofer handles the low-end frequencies with ease, while the midrange drivers and tweeters ensure that every instrument makes its presence felt on this virtual concert platform.

SUPERB ACCOMMODATIONS

Front and rear heated seats are standard on the S Q4 and GTS and optional on the S model. All-electric adjustment ensures the perfect driving position in terms of height, reach and seatback angle, along with a lumbar system with four different settings.

DISTINCTIVE DETAIL

The epitome of Italian design, the interior of the Quattroporte features leather and handcrafted contrast stitching. For the ultimate touch of style and sophistication, the Maserati Trident can be stitched into the seat headrests of the Quattroporte, to replace the normal embossing. This feature is available in conjunction with fine-grain extended leather. With black leather upholstery, there is a choice of three colors of contrast stitching: red, gray and tan. Furthermore, on red leather upholstery, the trident can also be stitched in black. Seat ventilation, with the central part of the seat and back upholstered in perforated leather, is available as an option.

EASY TRUNK ACCESS

A power-operated trunk is standard for the S Q4 and GTS and optional on the S model. This allows various ways of automatically opening and closing the trunk: via the remote control of the car, by pressing a button on the door panel or the trunk lid itself or by placing a foot under a sensor below the car.

A TIMELY TRADITION

The luxury and refinement of Maserati's roadgoing cars has always been underscored by the presence of a clock on the dashboard. Skilled clockmakers were commissioned to create a unique timepiece styled to complement the Quattroporte.

YOUR MULTILINGUAL ASSISTANT: SIRI

For Quattroporte drivers with an iPhone® 5 or 6, the Siri system acts as their personal assistant, allowing them to perform numerous tasks using voice commands. Actions such as making a call or accessing music, messages, reminders, emails, information services—and much more—can be easily accomplished hands-free and in eight languages.



Rosso premium leather, with Zegna dark gray silk with light gray contrast stitching.

THE ERMENEGILDO ZEGNA-DRESSED MASERATI

TRUE LUXURY IS DERIVED FROM THE SUPREME MASTER: NATURE.

It can be argued that nature is the ultimate artisan...so it is no surprise that our idea of luxury includes some of nature's finest works. Maserati and the world-renowned fashion house Ermenegildo Zegna understand this, and have teamed up to produce some of the automotive world's most sumptuous and serene environments ever. The Zegna Edition Quattroporte is the ultimate expression of style and exclusivity, creating a dynamic, contemporary look certain to appeal to those who appreciate luxurious details. Maserati offers three different Ermenegildo Zegna-designed interiors for Quattroporte, each enveloping guests with rarefied natural

materials. The finest leather is combined with natural-fiber Zegna Mulberry Silk inserts on the seats, embellished with a hand-stitched micro-chevron. Seating features a central silk insert with a macro-chevron weave. Door panels, roof lining and sunshades are covered with Zegna Jersey Silk. The choice of color combinations capture organic hues of tan, red, and gray. In all, the Zegna Edition Quattroporte is a tribute to the harmony of opposites, the stylistic synthesis between sophisticated design and technological dynamism. It represents a milestone, enhancing the character and aesthetic value of this classic marque.



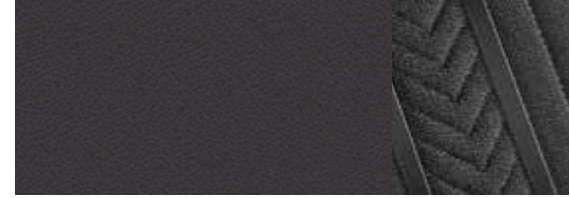
QUATTROPORTE ZEGNA PACKAGES



Cuoio Premium Leather / Dark Gray Zegna Silk with Light Gray Contrast Stitching



Rosso Premium Leather / Dark Gray Zegna Silk with Light Gray Contrast Stitching



Nero Premium Leather / Dark Gray Zegna Silk with Light Gray Contrast Stitching




WHEN INDIVIDUAL ELEMENTS
COME TOGETHER AS ONE: BEHOLD
THE TRUE POWER OF A SYMPHONY.

Uncompromising automotive excellence is a Maserati promise that extends to every aspect of the driving experience, including providing immersive concert-hall acoustics in the Maserati Quattroporte. Its new-generation premium surround system, created in association with high-end sound specialists Bowers & Wilkins, offers a sound experience that is just as thrilling as Quattroporte's distinctive, throaty exhaust note. This optional hi-fi system reproduces every subtle note to perfection, with unparalleled dynamic purity. The system is architecturally designed and enhanced with digital features to ensure a rich sound experience in every seating position, so everyone in the car reaps the sonic benefits. It is stunning sound for an astounding car.







Bowers & Wilkins

BOWERS & WILKINS

HERE, THERE TRULY IS NOT A BAD SEAT IN THE HOUSE.

Thoughtful touches are simply a given with Quattroporte, yet it is obvious that with the incredible acoustics experienced with the optional Bowers & Wilkins Premium Surround Sound system, special attention was paid to perfecting and tailoring this feature. In fact, the engineers responsible for Bowers & Wilkins' flagship 800 Series Diamond Speakers tuned this system to match the unique environment of Quattroporte. It took expert ears and hours of listening to create the rich sound experience—15 speakers were strategically placed and built into the car's architecture to ensure the best possible acoustics. In all, the system raises the bar for sound clarity

and detail, much in keeping with Maserati's high-reaching standards. Additionally, speaker placement creates a completely immersive sound experience, reaching every corner and every ear. Harman's QuantumLogic signal processing and AuraVox equalization ensure maximum fidelity and sonic accuracy.

The Maserati Premium Surround Sound system integrates tried and trusted acoustic innovations used in Bowers & Wilkins' most advanced home systems. The speaker cone material includes Kevlar, introduced in the 1970s as the result of a long-standing commitment by Bowers & Wilkins to acoustic

research and development. The system employs aluminum tweeters to capture the subtleties of music—something as faint as delicate brush strokes across the surface of a cymbal are projected with amazing accuracy. To create rock-solid bass, engineers incorporated Rohacell into the system's bass drivers. Rohacell is a stiff, highly resilient material often used in the construction of rockets and aircraft.

Advanced and versatile, the audio system is compatible with most disc formats and features a built-in USB connector, so it is easy to plug in your iPhone® or any other digital music-playing device.







THE EXHILARATING QUATTROPORTE S

THE SPIRIT OF LUXURY, EVOLVED INTO SPIRITED LUXURY.

The Quattroporte S pushes the frontiers of automotive luxury while still displaying that most Italian of characteristics: passion. Distinguishing it from the GTS version and adding extra glamour to its imposing presence are a number of stylistic features, including aggressive, oval twin exhaust pipes and 19-inch Poseidone wheels that are fitted as standard. And since connoisseurs have both an eye and an ear for opulence, Quattroporte S features a compact, lightweight exhaust

system, which includes an air valve system that can be found on all Maserati automobiles. Beneath the hood is Maserati's 3.0-liter twin-turbocharged V6 engine, a brilliant masterpiece of engineering that develops 404 HP, delivering exhilarating power with maximum efficiency. Its unmistakable engine note distinguishes it from every other V6 on the road, thanks to a compact, lightweight exhaust system that keeps the sound discreet and understated at lower RPMs. However, when the Sport button is pressed, the bypass valves open up, releasing a thrilling, powerful roar. The Quattroporte S accelerates from 0 to 60 mph in just 5.0 seconds and has a top speed of 177 mph. USA model only, not available in Canada.



THE VERSATILE QUATTROPORTE S Q4

WHEN A VEHICLE PERFORMS ON ALL FRONTS, IT SHOULD ALSO PERFORM ON ALL CORNERS.

The Quattroporte S Q4 is the first car in Maserati's history to feature intelligent all-wheel drive, delivering enhanced driving pleasure, along with superior levels of safety and grip on all road surfaces. The four-wheel drive system is compact, lightweight and "active," and has been designed for optimal traction, torque, comfort and fuel consumption. Compact size and efficiency are the main characteristics of the Q4 intelligent all-wheel drive system. To provide the driving feel that is associated with rear-wheel drive, the intelligent control system continually

varies the drive torque distribution to the four wheels by monitoring a considerable number of parameters. The Quattroporte S Q4 is powered by Maserati's formidable twin-turbocharged V6 engine. Producing 404 HP, the Quattroporte S Q4 accelerates from 0 to 60 mph in just 4.8 seconds and has a top speed of 175 mph.

04



QUATTROPORTE S Q4 FEATURES MASERATI INTELLIGENT ALL-WHEEL DRIVE FOR SEAMLESS TRACTION ON DEMAND.





THE INIMITABLE QUATTROPORTE GTS

MASERATI PRESENTS THE ULTIMATE SUPERSEDAN.

The entire essence of Maserati can be summed up in a single name plus three accompanying letters: Quattroporte GTS. This, the most powerful Quattroporte in the range and the company's flagship, is the perfect synthesis of luxury and performance. It is a car that can accelerate from 0 to 60 mph in 4.6 seconds, transforming itself from an exclusive luxury sedan into a thrilling sports machine with a top speed of 190 mph. Underneath the hood, Maserati's innovative 3.8-liter

twin-turbocharged V8 engine conducts a symphony of sound and exhilaration. Manufactured in Maranello, a city in the Terra di Motor (Italy's "Motor Valley"), the engine utilizes a high-pressure direct-fuel-injection system that improves combustion by injecting the atomized fuel straight into the combustion chamber. Three engine modes can be selected: Normal, Sport and ICE (Increased Control & Efficiency). The use of parallel-mounted, low-inertia, twin-scroll turbines helps prevent turbo lag and ensures swifter accelerator reaction and better responsiveness across the powerband. The Quattroporte GTS complies with the most stringent emissions criteria and features Start & Stop engine function as standard.





Quattroporte GTS shown with Bianco exterior. European model shown.

TECHNOLOGY AND SAFETY

THE TRANSMISSION IS NOT A PIECE OF ART. IT IS A GALLERY.

The Quattroporte means exhilaration and enjoyment for both driver and passengers alike, thanks to Maserati's overwhelming passion for engineering innovation and excellence. The engine, chassis, transmission and suspension all work together in perfect harmony to deliver the very highest levels of performance and comfort—qualities for which Maserati is world famous. Components are manufactured with precision and care by dedicated individuals, and are the product of high-tech processes that set new standards in automotive manufacturing.





The sophisticated eight-speed ZF automatic gearbox delivers precise gearchanges and exceptional performance, together with impressive weight savings: the eight-speed transmission is almost nine pounds lighter than the six-speed version in the previous Quattroporte. The hydraulic gearbox, mounted at the front along with the engine, is assisted by auto-adaptive software that is now standard on all Maserati models. It is able to recognize both the way the car is being driven and the road conditions, and adapt the gear changing mode accordingly. There are five operating modes, selected using the buttons by



the gear lever: Auto Normal, Auto Sport, Manual Normal, Manual Sport (which offers the driver full control of the transmission) and the Increased Control & Efficiency (ICE) mode, where gearshifts take place automatically and are almost unnoticeable—for unrivaled comfort. The Maserati Quattroporte still offers the kind of outstanding handling for which the marque is famous, together with levels of driving pleasure normally associated with much smaller models. The car's optimal weight distribution is a major influence here, but minimizing weight is also a crucial factor. Large amounts of aluminum are used in the construction



of the chassis and body, considerably reducing weight, while special steel reinforcements ensure outstanding torsional rigidity. Like every Maserati, the Quattroporte has an extremely sophisticated suspension setup, which is combined with the latest version of the Skyhook electronic system that features continuous damping variation shock absorbers. The basic setting prioritizes comfort, whereas for more dynamic handling, the shock absorbers immediately stiffen when the driver presses the suspension button on the center console, thus significantly reducing load transfer during sporty driving.



SUSPENSION AND BRAKING

The aluminum arms of the double-wishbone front suspension are higher up for more precise handling, while the five-arm multilink system at the rear is ideal for delivering superb ride comfort along with sports car-like performance. The braking system benefits from innovations already introduced on other models in the range. It now incorporates developments designed to deliver a quieter operation but with no loss of

efficiency. Dual-cast discs combine the strength of cast iron with the lightness of aluminum to reduce the unsprung mass. Efficient monobloc calipers provide the braking power, with six pistons at the front and four pistons at the rear acting on ventilated, cross-drilled discs. On the GTS, the front discs are 380 mm x 34 mm, whereas on the S and S Q4 versions they are 360 mm x 32 mm. At the rear, all three versions feature



350 mm x 28 mm discs. Steering sensitivity is fundamental in giving the driver the right feel at the wheel. Instead of an electrohydraulic system, Maserati has equipped the Quattroporte with a servo-assisted hydraulic system to channel an immediate response directly to the driver's hands, with no annoying impression of artificial "help" when cornering at higher speeds.

MASERATI STABILITY PROGRAM (MSP)

The Maserati Stability Program (MSP) is an advanced electronic stability control system that reduces torque from the engine and activates the brakes if the vehicle begins to deviate from its normal trajectory or if a skid is detected. All this happens in just a few milliseconds.

The system combines a number of devices including Anti-Slip Regulation (ASR), which reduces wheelspin and improves traction, and Motor Spin Regulation (MSR), which prevents wheels from locking up when changing down suddenly. The Antilock Braking System (ABS) and Electronic Brake-force Distribution (EBD) monitor the car's braking, stopping the wheels from locking and distributing the braking force between the front and rear axles. A Brake Assistance System (BAS) then recognizes emergency stops and boosts the pressure in the hydraulic circuit for the ultimate in stopping power.

TIRE PRESSURE MONITORING SYSTEM (TPMS)

The Tire Pressure Monitoring System (TPMS) is a device that continuously monitors tire pressures by means of sensors fitted inside the wheel rims. The tire pressure is shown on the display at the center of the dashboard, and a beeper and warning light alert the driver if this drops below the optimal level or in the event of a puncture.

CRUISE CONTROL

The Maserati Quattroporte comes equipped with Cruise Control, operated from the steering wheel. The set speed is shown on the display at the middle of the instrument panel and is maintained even when the road climbs or descends—the system makes the car accelerate or decelerate accordingly.

PARKING SENSORS AND REVERSING CAMERA

To assist with maneuvering the car in tight spaces, the Maserati Quattroporte comes equipped with parking sensors housed in the front and rear bumpers. Beeping noises increase in frequency as the obstacle approaches, while the TFT display at the center of the instrument panel shows the car surrounded by symbols which light up in green, yellow or red, depending upon the remaining distance. In addition, there is a rearview camera, fitted close to the trunk lock that shows a view of what is behind the car on the Maserati Touch Control display.

ADAPTIVE FRONT LIGHTING SYSTEM (AFS)

The outstanding lighting provided by the bi-Xenon headlights is further enhanced by the Adaptive Front Lighting System (AFS), which automatically adjusts the width and depth of the beam. This is made possible by a camera mounted in the rearview mirror and sensors that monitor several different parameters, including the lights of other road users, the car's speed and the way it is being driven. If the road ahead is empty, the beam expands to its maximum width and depth for the best visibility, with no need to switch manually to full-beam mode. The advantages offered by the AFS system are perceived especially in case of bad weather and for motorway or town driving. In these conditions the system adjusts automatically to increase visibility and driving safety.

ELECTRONIC PARKING BRAKE (EPB)

The Quattroporte is equipped with an Electronic Parking Brake (EPB) that is engaged via a control on the gear lever surround instead of with a conventional mechanical lever. If necessary, it can be used when the car is moving: the system communicates with the MSP and acts on all four wheels to obtain an immediate braking action (a deceleration of 0.5 g), without any loss of stability, until the control is released.

HILL HOLDER

To help the driver when starting off on an uphill slope, the Quattroporte comes with the Hill Holder system. On a gradient, this device keeps the car braked for a short time, thus allowing the driver's foot to move from the brake to the accelerator pedal without the car rolling backwards.

BLIND SPOT ALERT (BSA)

The Blind Spot Alert (BSA) system monitors the zones around the driver that cannot be seen in the door mirrors. When a vehicle enters one of these areas, a warning triangle appears in the door mirror; should the driver then activate the indicator to change lane, a warning is sounded. The Rear Cross Path (RCP) function works in a similar way, emitting the same warning when an unseen vehicle is detected approaching from the right or the left as the car reverses out of a parking space.



European model shown.



The Supplemental Restraint System (SRS) consists of six air bags designed to provide added protection along with the seat belt system.

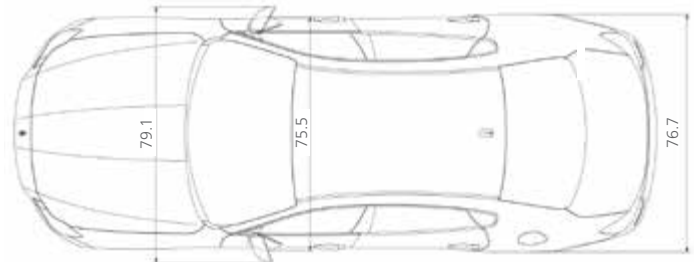
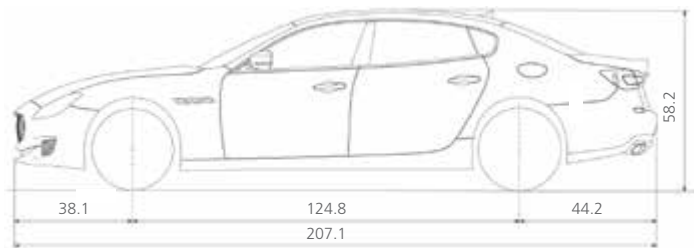
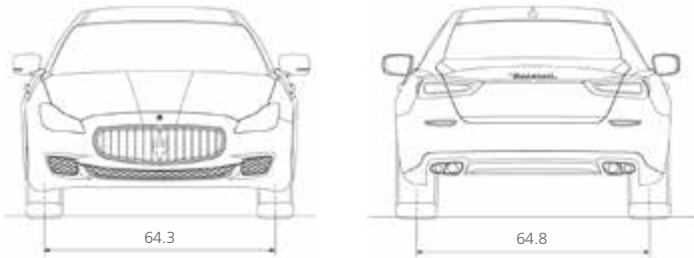
AIR BAGS

The Maserati Quattroporte comes equipped with six air bags. Two front air bags, both dual-stage, shield the driver and front passenger in the event of collision, while their torsos and hips are further protected by two side air bags located in the front seats. There are also two window air bags fitted in the roof next to the central pillar that cushion the heads of the front and rear passengers if the car is struck from the side.

SEAT BELT PRETENSIONERS AND ACTIVE HEADRESTS

The front seat belts are fitted with electronically controlled pyrotechnic pretensioners and the latest-generation load limiters. The system communicates with a sensor to determine the seriousness of a collision, and then activates with precisely the right amount of force to reel in the optimum length of belt. If the car is hit from behind, the active headrests of the two front seats automatically move in closer to the occupants' heads to reduce the risk of whiplash injury. Both side seats at the rear are fitted with ISOFIX fasteners for child seats, ensuring that the youngest passengers are properly protected as well.





DIMENSIONS AND WEIGHTS

Length
 Width (with side mirrors)
 Width (without side mirrors)
 Height
 Wheelbase
 Front track
 Rear track
 Front overhang
 Rear overhang
 Turning circle
 Trunk capacity
 Fuel tank capacity
 Dry weight
 Curb weight

ENGINE

Number of cylinders and layout
 Displacement
 Bore
 Stroke
 Transmission
 Compression ratio
 Maximum power output
 Engine speed at maximum power output
 Peak torque
 Engine speed at peak torque

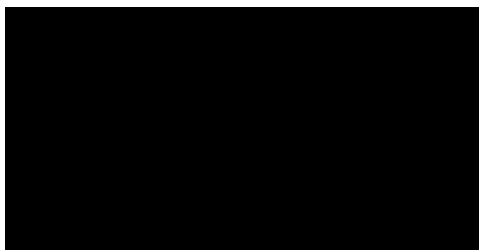
PERFORMANCE

Maximum speed
 Acceleration from 0 to 60 mph (0 to 100 km/h)
 Stopping distance from 60 mph (100 to 0 km/h)
 Fuel consumption — combined fuel
 Fuel consumption — highway fuel
 Fuel consumption — city fuel

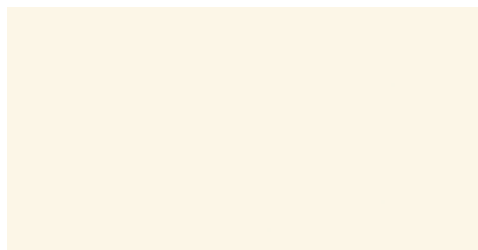
QUATTROPORTE S*	QUATTROPORTE S Q4	QUATTROPORTE GTS
207.2 in (5262 mm)	207.2 in (5262 mm)	207.2 in (5262 mm)
82.7 in (2100 mm)	82.7 in (2100 mm)	82.7 in (2100 mm)
76.7 in (1948 mm)	76.7 in (1948 mm)	76.7 in (1948 mm)
58.3 in (1481 mm)	58.3 in (1481 mm)	58.3 in (1481 mm)
124.8 in (3171 mm)	124.8 in (3171 mm)	124.8 in (3171 mm)
64.4 in (1634 mm)	64.4 in (1634 mm)	64.4 in (1634 mm)
64.8 in (1647 mm)	64.8 in (1647 mm)	64.8 in (1647 mm)
38.1 in (968 mm)	38.1 in (968 mm)	38.1 in (968 mm)
44.2 in (1123 mm)	44.2 in (1123 mm)	44.2 in (1123 mm)
38.7 ft (11.8 m)	38.7 ft (11.8 m)	38.7 ft (11.8 m)
18.7 cu ft (530 L)	18.7 cu ft (530 L)	18.7 cu ft (530 L)
21.1 gal (80 L)	21.1 gal (80 L)	21.1 gal (80 L)
3,880 lbs (1760 kg)	4,012 lbs (1820 kg)	3,968 lbs (1800 kg)
4,100 lbs (1860 kg)	4,233 lbs (1920 kg)	4,189 lbs (1900 kg)
V6 60°	V6 60°	V8 90°
182 cu in (2979 cm ³)	182 cu in (2979 cm ³)	232 cu in (3799 cm ³)
86.5 mm	86.5 mm	86.5 mm
84.5 mm	84.5 mm	80.8 mm
8-speed automatic	8-speed automatic	8-speed automatic
9.7:1	9.7:1	9.5:1
404 HP (410 CV / 302 kW)	404 HP (410 CV / 302 kW)	523 HP (530 CV / 390 kW)
5,500 RPM	5,500 RPM	6,500 - 6,800 RPM
406 ft lb (550 Nm)	406 ft lb (550 Nm)	524 ft lb (710 Nm)
1,750 - 5,000 RPM	1,750 - 5,000 RPM	2,250 - 3,500 RPM
177 mph (285 km/h)	175 mph (283 km/h)	190 mph (307 km/h)
5.0 sec (5.1 sec)	4.8 sec (4.9 sec)	4.6 sec (4.7 sec)
115 ft (35 m)	115 ft (35 m)	112 ft (34 m)
18 mpg	18 mpg	17 mpg
23 mpg	23 mpg	22 mpg
16 mpg	16 mpg	15 mpg

* USA model only, not available in Canada.

SOLID PAINTS

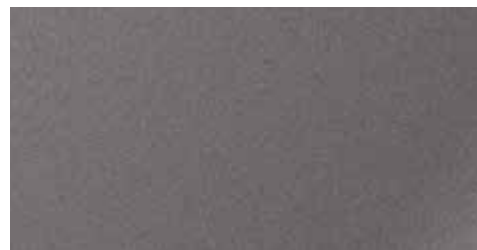


Nero



Bianco

METALLIC PAINTS

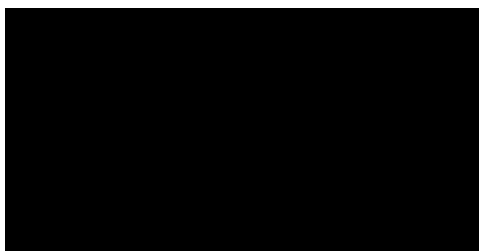


Grigio



Grigio Metallo

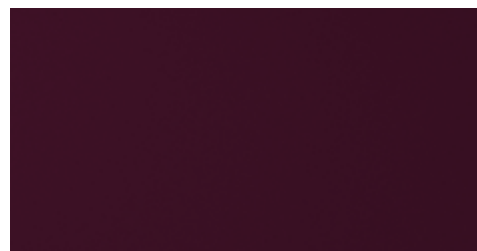
MICA PAINTS



Nero Ribelle



Blu Passione



Rosso Folgore

METALLESCENT PAINTS



Bronzo Siena

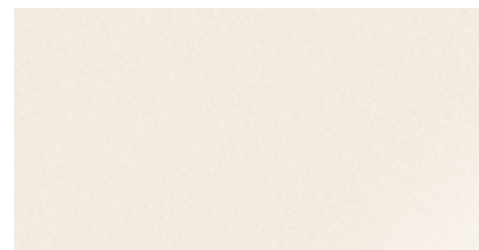


Champagne



Grigio Maratea

PEARLESCENT PAINTS



Bianco Alpi

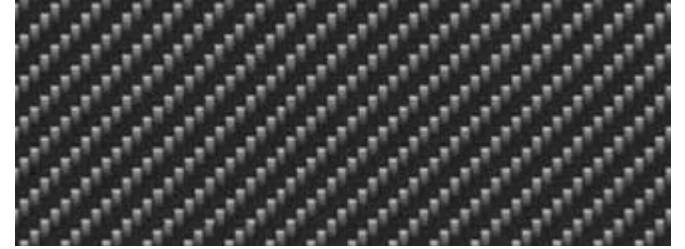
INTERIOR TRIM



Ebano (high-gloss)



Tanganika (high-gloss)



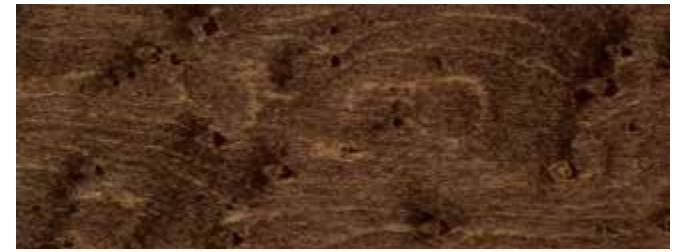
Carbon Fiber (high-gloss)



Radica (open-pore)



Rovere Chiaro (open-pore)

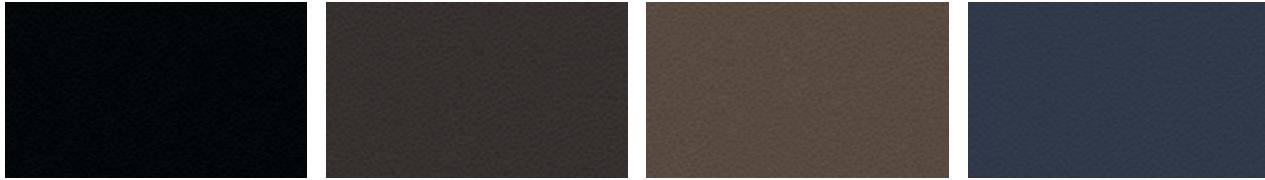


Erable (high-gloss)



Black Piano (high-gloss)

UPPER DASHBOARD / UPPER DOOR PANELS



Nero

Marrone

Tortora

Blu



Nero with Rosso Stitching

Nero with Grigio Stitching

Nero with Cuoio Stitching

Nero with Sabbia Stitching

LOWER DASHBOARD / SIDE DOOR PANELS AND ARMREST / CENTRAL TUNNEL



Nero

Marrone

Tortora

Sabbia

Cuoio

Rosso

SEATS



Nero

Marrone

Tortora

Sabbia

Cuoio

Rosso



Nero with Rosso Stitching

Nero with Grigio Stitching

Nero with Cuoio Stitching

Rosso with Nero Stitching

HEADREST STITCHING



Nero with Rosso Stitching



Nero with Grigio Stitching



Nero with Cuoio Stitching



Rosso with Nero Stitching

STEERING WHEEL



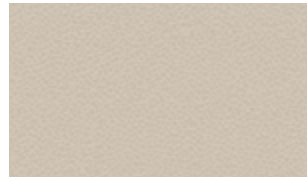
Nero



Marrone



Tortora

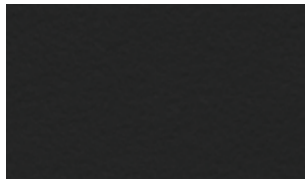


Sabbia

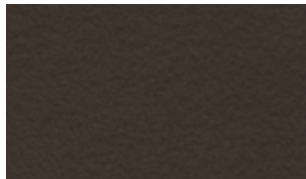


Blu

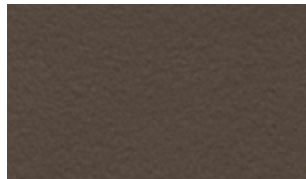
CARPET / SEAT BELTS



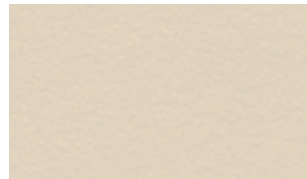
Nero



Marrone



Tortora

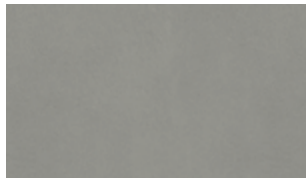


Sabbia

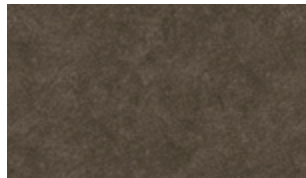
HEAD LINING



*Nero



*Grigio



**Tortora



*Sabbia

* Optional in Alcantara. **Available only in Alcantara.



POSEIDONE

- * Dimensions: 19 in
- * Front tire: 245/45 R 19
- * Rear tire: 275/40 R 19
- * Standard on S and S Q4



CRONO

- * Dimensions: 20 in
- * Front tire: 245/40 R 20
- * Rear tire: 285/35 R 20



MERCURIO

- * Dimensions: 20 in
- * Front tire: 245/40 R 20
- * Rear tire: 285/35 R 20



URANO (POLISHED)

- * Dimensions: 20 in
- * Front tire: 245/40 R 20
- * Rear tire: 285/35 R 20
- * Standard on GTS



GTS ANTRACITE (FORGED)

- * Dimensions: 20 in
- * Front tire: 245/40 R 20
- * Rear tire: 285/35 R 20
- * Red trident on GTS only



GTS SILVER (FORGED)

- * Dimensions: 20 in
- * Front tire: 245/40 R 20
- * Rear tire: 285/35 R 20
- * Red trident on GTS only



TITANO (FORGED)

- * Dimensions: 21 in
- * Front tire: 245/35 R 21
- * Rear tire: 285/30 R 21

STANDARD



Rosso Anodizzato (GTS)



Nero Opaco (S and Q4)

OPTIONAL



Rosso



Nero



Blu



Argento



Alluminio Lucido

	QP S	QP S Q4	QP GTS
WHEELS & CHASSIS			
19-inch alloy wheels – Poseidone design (245/45 R19 front; 275/40 R19 rear)	●	●	–
20-inch alloy wheels – Crono design (245/40 R20 front; 285/35 R20 rear)	○	○	○
20-inch alloy wheels – Mercurio design (245/40 R20 front; 285/35 R20 rear)	○	○	●
20-inch machine-polished alloy wheels – Urano design (245/40 R20 front; 285/35 R20 rear)	○	○	○
20-inch forged alloy wheels – GTS Silver design (245/40 R20 front; 285/35 R20 rear)	○/p	○/p	○
20-inch forged machine-polished alloy wheels – GTS Antracite design (245/40 R20 front; 285/35 R20 rear)	○	○	○
21-inch forged alloy wheels – Titano design (245/35 R21 front; 285/30 R21 rear)	○/p	○/p	○
Brake calipers, matte Black	●	●	–
Brake calipers, painted Black	○/p	○/p	○
Brake calipers, painted Red	○/p	○/p	○
Brake calipers, painted Blue	○/p	○/p	○
Brake calipers, painted Silver	○/p	○/p	○
Brake calipers, anodized Red	–	–	●
Space-saver spare wheel 18-inch	●	●	●
ZF 8-speed automatic transmission; with tip up/down function from gear knob and fully manual mode (activation by specific button)	●	●	●
Performance Braking System: Front Brakes: six-piston aluminum monobloc fixed calipers with dual-cast ventilated drilled discs (380 mm x 34 mm) Rear Brakes: four-piston aluminum monobloc fixed calipers with ventilated discs (350 mm x 28 mm)	–	–	●
Front Brakes: six-piston aluminum monobloc fixed calipers with dual-cast ventilated drilled discs (360 mm x 32 mm) Rear Brakes: four-piston aluminum monobloc fixed calipers with ventilated discs (350 mm x 28 mm)	●	●	–
Skyhook – electronically variable active damping suspension system (manually adjustable with two stiffness levels and dedicated control button)	●	●	●
Start & Stop engine function	●	●	●
ICE control (Increased Control & Efficiency): specific software for the easiest vehicle dynamic management in all conditions and reduced consumption	●	●	●
SAFETY			
Blind Spot Alert	○	●	●
Daytime Running Light (DRL)	●	●	●
Adaptive Front Lighting System (AFS)	●	●	●
High-pressure front headlamps washing system	●	●	●
Full LED taillamps and third stop light integrated into rear window	●	●	●
Automatic headlamp activation	●	●	●
Parking lights	●	●	●
Air bag system: dual-stage front bags (driver and passenger), side bags, head bags	●	●	●
Front and rear seat belts with pretensioners and load limiters	●	●	●

	QP S	QP S Q4	QP GTS
Maserati Stability Program (MSP) includes:			
– acceleration slip regulation (ASR)	●	●	●
– antilock braking system (ABS)			
– electronic brake distribution (EBD)			
– Maserati drag torque control (MSR)			
Hill Holder	●	●	●
Electronic Parking Brake (EPB)	●	●	●
Tire Pressure Monitoring System (TPMS) with pressure displayed in digital central cluster	●	●	●
Tire sealing compound and electric air compressor	●	●	●
Cruise Control	●	●	●
EXTERIOR EQUIPMENT			
Solid paint	●	●	●
Metallic paint	○	○	○
Mica paint	○	○	○
Metallescent paint	○	○	○
Pearlescent paint	○	○	○
Electric sunroof, with tilting and sliding regulations	●	●	●
Chromeline exterior trim	●	●	●
Heated windshield nozzles	●	●	●
Lightweight trunk lid construction, with keyless opening and remote key unlocking	●	●	●
Twin, dual-pipe exhaust system in chrome-plated stainless steel	●	●	–
Twin, trapezoidal integrated dual-pipe exhaust system in chrome-plated stainless steel	–	–	●
Quattroporte badge on rear deck lid	●	●	●
Q4 badge on rear deck lid	–	●	–
GTS exterior detailing (body-colored bumpers and side skirts, front grille in Black Gloss, rear GTS badge, Trident with Red highlights on alloy wheel center caps, front grille and C-pillar logo)	–	–	●
20-inch all-season tires	○	○	○
INTERIOR EQUIPMENT			
Fabric headlining	●	●	–
Alcantara® headlining	○/p	○/p	●
Leather interior upholstery for seats, upper dashboard, armrests	●	●	–
Premium-quality fine-grain extended leather interior upholstery wrapping upper and lower dashboard, armrests, hand-grabs and door handles, upper door panel, central door panel and drilled seats (squab drilled center and sitting center)	○/p	○/p	○/p
Premium-quality fine-grain extended leather interior upholstery wrapping seats, upper and lower dashboard, armrests, grab handles and door handles, upper and central door panel	○/p	○/p	●
Contrast stitching available in conjunction with fine-grain extended leather and perforated leather options	○	○	○

	QP S	QP S Q4	QP GTS
Zegna Edition interiors: combines leather interiors with Zegna silk inserts for seats, door panels, roofline and sun visors. Available in three leather color choices: Black, Tan or Red	○	○	○
Trident stitched on the headrests (requires Premium leather with contrast stitching)	○	○	○
Interior floor carpet in velour	●	●	●
Driver carpet with GTS logo sewn onto leather insert plus velour	–	–	●
Open-pore wooden trim for selected interior details: Radica	●	●	○
Open-pore wooden trim for selected interior details: Rovere Chiaro	○	○	○
High-gloss wooden trim for selected interior details: Tanganika	○	○	○
High-gloss wooden trim for selected interior details: Ebano	○	○	○
High-gloss wooden trim for selected interior details: Erable	○	○	○
High-gloss trim for selected interior details: Black Piano	○	○	●
High-gloss Carbon finish trim for selected interior details	○	○	○
Steering wheel and gear knob in fine colored leather	●	●	●
Steering wheel and gear knob in fine Sabbia leather, with matching inserts	○	○	○
Steering wheel with wood insert and gear knob in fine Sabbia leather, with matching insert	○	○	○
Steering wheel with wood insert and gear knob in fine colored leather	○	○	○
Steering wheel with high-gloss Carbon insert and gear knob in fine Black leather	○	○	○
Heated steering wheel in fine colored leather and wood insert	○/p	●	○
Heated steering wheel in fine Sabbia leather and wood insert	○/p	○/p	○
Sport pedals in brushed stainless steel	○/p	○/p	○
Maserati Active Shifting: aluminum gearshift paddle mounted on the steering column	○/p	●	●
Front seats electrically adjustable (8 ways + 4 ways for lumbar), heated, with 2 memories for driver side	●	●	●
Rear-seat bench (three-place version), foldable at 40%	●	–	–
Heated rear-seat bench (three-place version), foldable at 40%	○/p	●	●
High thermal and noise insulation laminated glass	●	●	●
Front armrest with twin mechanical opening, with illuminated storage compartment, air conditioning and 12V socket	●	●	●
Rear armrest with USB charger and 12V cigar lighter	●	●	●
Maserati clock in central area of dashboard	●	●	–
Maserati clock in central area of dashboard, specific for GTS (with badge and red pointers)	–	–	●
Trident logo embossed on headrests – front and rear	●	●	●
Two hidden front cup holders and 12V cigar lighter	●	●	●
Storage compartments: driver glove box, passenger glove box, front and rear armrest, map pocket on front and rear doors, seatback pockets	●	●	●
Quattroporte badge on dashboard trim	●	●	●
COMFORT AND FUNCTIONALITY			
HomeLink® garage door opener	●	●	●
Power foot pedals	○/p	○/p	●
7-inch color cluster display with onboard computer/driver info	●	●	●

	QP S	QP S Q4	QP GTS
Maserati Touch Control (MTC) unit: 8.4-inch touchscreen display, including navigation, radio, CD/DVD audio/video player, SD card reader, USB and AUX-in (into dedicated compartment on front tunnel), Apple® chip, Bluetooth® function for audio streaming, climate controls, phone devices, car set-up, etc.	●	●	●
SIRI (Apple® function) Smart Personal Assistant	●	●	●
Dual-zone automatic climate control	●	●	●
Four-zone automatic climate control (when selected, volume of compartment under front armrest is reduced by approximately 80%)	○ / p	○	○ / p
Power rear lateral sunshades	●	●	●
Power rear sunshade	○ / p	●	●
Front-seat ventilation	○ / p	○ / p	○ / p
Steering column with power height and reach adjustments	●	●	●
Power-assisted steering, with speed-sensitive feature	●	●	●
Harman Kardon sound system with 10 speakers (900W)	●	●	●
Bowers & Wilkins Premium Surround system with 15 speakers (1,280W) with Clari-Fi music restoration function	○	○	○
Two individual comfort rear seats including heating, ventilation, power adjustment and front-passenger seat movement (only in combination with four-zone climate, fine-grain extended and perforated leather upholstery and power rear sunshade)	○	○	○
Pull-down tables	○	○	○
Front parking sensors with graphic indication of object distances on cluster display	●	●	●
Rear parking sensors with graphic indication of object distances on cluster display	●	●	●
Rearview camera with imaging displayed on central MTC	●	●	●
Automatically dimming powered and heated exterior mirrors, electrically adjustable and foldable, with integrated LED turn lights	●	●	●
Aluminum key fob with remote start, keyless entry and keyless go function (also includes lock button, unlock button, trunk opening, exterior light on)	●	●	●
Rear doors Keyless Entry System	○	○	○
Power Trunk Lid – hands-free function	○	●	●
Easy entry/exit system for steering column and seat	●	●	●
Smoking kit (ashtray for cup holders)	○	○	○
Wi-Fi Hot Spot	●	●	●
Alarm system (perimeter and volumetric sensing, anti-lift device, electronic immobilizer)	●	●	●
Rain sensors	●	●	●
Quick reference user's guide (printed) and DVD interactive user guide, browsable via MTC (Maserati Touch Control)	●	●	●
Rear-seat entertainment and pull-down tables	○	○	○

QUATTROPORTE PACKAGES

Its unique blend of elegance and power makes the Maserati Quattroporte a truly exceptional car. In order to meet every customer's specific individual needs, the Quattroporte is now available to order with specially tailored packages, designed to enhance the comfort, style and functionality of the car.

CLIMATE PACKAGE

Designed to enhance onboard comfort, this package includes a four-zone climate control system with a separate control unit for rear passengers and an electric sunblind for the rear window.

	QP S	QP S Q4	QP GTS
Four-zone climate control	●	–	–
Heated rear seats	●	–	–
Power rear sunblind	●	–	–
Wood and leather heated steering wheel	●	–	–

LUXURY AND LUXURY PLUS PACKAGES

For those who require an even more elegant and luxurious interior, the Luxury Package is the obvious choice. Along with exclusive upholstery in natural-grain, premium leather and Alcantara® rooflining, the package also features electric pedal adjustment for the ultimate driving comfort. In addition, the Luxury Plus Package also includes ventilated front seats.

LUXURY PACKAGE	QP S	QP S Q4	QP GTS
Full natural leather interior	●	●	–
Power foot pedals	●	●	–
Alcantara® headlining	●	●	–
LUXURY PLUS PACKAGE			
Full natural leather drilled interior	●	●	–
Front-seat ventilation	●	●	–
Power foot pedals	●	●	–
Alcantara® headlining	●	●	–
LUXURY PLUS PACKAGE (for GTS only)			
Full natural leather drilled interior	–	–	●
Front-seat ventilation	–	–	●
Four-zone climate control	–	–	●

SPORT PACKAGE 20-INCH AND SPORT PACKAGE 21-INCH

With colored brake calipers and racing-style brushed steel pedals, these packages take the sporty appearance of the Quattroporte to new heights. For an even more dynamic driving experience, aluminum Maserati Active Shifting gear-shift paddles are incorporated in the steering column. The package is available in two different versions: with either 20-inch Mercurio or 21-inch Titano wheels.

SPORT PACKAGE 20-inch	QP S	QP S Q4	QP GTS
20-inch Mercurio alloy wheels	●	●	–
Sport pedals	●	●	–
Painted brake calipers	●	●	–
Active Shifting gear-shift paddles (on QP S)	●	–	–
SPORT PACKAGE 21-inch			
21-inch Titano alloy wheels	●	●	–
Sport pedals	●	●	–
Painted brake calipers	●	●	–
Active Shifting gear-shift paddles (on QP S)	●	–	–



WORLD OF MASERATI

THE MASERATI LEGEND: NEVER RE-CREATED. RARELY CAUGHT.

Maserati was founded as a racing car constructor, and its deepest roots are in the world of competition. After the impressive records set by the MC12, the racing spirit lives on today in the Maserati Trofeo MC, the international single-marque championship for drivers who wish to compete in the GT class.

TROFEO MC WORLD SERIES: STYLISH TRACK EXCITEMENT

The Maserati Trofeo MC is one of the most successful international GT racing series, with events in Europe, the United States, Japan and China. For more information, visit maseraticorse.com or send an email to TrofeoMaserati@maserati.com

MASTER MASERATI DRIVING COURSES

It is perhaps the ultimate driving experience: taking to the racetrack in a race-tuned Maserati. A Master Maserati Driving Course places you behind the wheel of all Maserati range models so that you can learn about performance driving and other techniques.

MASTER WARM-UP

The Maserati Master Warm-Up offers Maserati enthusiasts training in the techniques of race-circuit driving in high-performance cars, with the support of a qualified, expert staff. It is an opportunity to enter the Maserati world as a privileged guest, starting with a morning visit to the Factory where the brand's unmistakable cars are built and moving on to the Varano dé Melegari circuit, home of the Master Maserati courses. It is a whole afternoon of dynamic activities, including several on-circuit driving sessions combined with a car-handling exercise that tests students' driving abilities, which can then be perfected in subsequent course levels.



MASTER GT 1 DAY

The one-day Master GT course is designed to improve personal driving techniques at the wheel of different Maseratis. This intensive training program comprises a number of exciting and dynamic sessions in high-performance cars, and is run by a highly trained specialist staff whose aim is to improve every participant's personal driving skills in an environment that is enjoyable and challenging for all.

MASTER GT 2 DAYS

An intensive two-day course that focuses on advanced GT driving techniques and safe yet sporty driving. In a sequence of sessions on the circuit, the driver is taught how to control the car in different simulated road conditions such as quick direction changes, controlled skids and braking techniques. The ultimate aim is to use the lessons learned to maximize the enjoyment of driving a high-performance Maserati.

MASTER HIGH PERFORMANCE

The Master High Performance program includes advanced high-speed driving and more technically complex exercises that build upon the fundamental skills acquired in the earlier Master GT courses. The teaching and structure of this course are adapted



to the individual needs of the participants, who can improve their driving proficiency through the analysis of Formula 1-type telemetry data.

MASTER ITALIAN LIFESTYLE EXPERIENCE

This exclusive, five-star event allows Maserati enthusiasts and their companions to experience the very best that Italy has to offer. Along with a series of Maserati racetrack sessions for the driver, both participants enjoy a program of first-class activities and excursions in two cities steeped in history and culture: Florence and Parma.

MASTER MASERATI INCENTIVE

The incentive courses last either a half day or a whole day, and include a series of highly stimulating activities. Aside from the thrilling driving sessions on the track, there are practice exercises and competitions that foster team spirit—hence they provide the perfect context for corporate incentive and team-building events.

TO REGISTER, CONTACT MASTER MASERATI:

Telephone: +39 0525 551138 Fax: +39 0525 551140

Email: info@mastertgt.it

For more information, visit www.maseratiusa.com

FACTORY TOUR*

See where and how the Maserati myth is born. Maserati offers you the opportunity of finding out about its secrets from the inside, through a guided tour of the Modena production plant. Discover how the cars are made, learn their secrets, fully understand their engineering and really feel part of the Maserati family.

MASERATI EXPERIENCE

For those wishing to combine their factory visit with a little more insight into the company's home city of Modena, Maserati has the perfect solution. Lasting one or more days, the Maserati Experience enables you to get to know the world of Maserati firsthand via a guided tour that allows you to discover Modena, its culture, its history and its fine food. For more information, please contact us by writing to maseratiexperience@maserati.com

*Tours are arranged by appointment and can be booked through your Authorized Maserati Dealer.

You can tailor your Maserati experience to your own personal tastes and interests by combining these and a variety of other activities:

- Visit the Panini Museum and/or Stanguellini Museum (famous motor museums)
- Guided tour of the town
- Guided tour of a traditional balsamic vinegar manufacturer, with tasting
- Guided tour of a winery, with tasting of local wines
- Cookery school
- Day at the Modena Golf & Country Club

MASERATI COLLECTION

The Maserati Collection of leisurewear, goods and branded merchandise has been specially created for those who share the Maserati passion and who seek to associate with the illustrious marque. Maserati Collection items are available from all Maserati dealers and from the Maserati Store at the Maserati showroom in Modena. Alternatively, all the articles in the collection can be purchased online at www.maseratistore.com

MASERATI CLUB

Joining the exclusive Maserati Club means sharing thrills and experiences with other Maserati owners, and being invited to take part in special motoring events all over the world. Drivers of cars from every era can enjoy the pleasure of driving their Maseratis in a calendar of events created especially for Maserati Club members. The Maserati Club provides the link between the past, present and future of the company. For more information, visit www.themaseraticlub.com

MASERATI GENUINE ACCESSORIES

Specially conceived to satisfy our customers' needs, Maserati genuine accessories are a perfect combination of design and functionality. The attention to detail, style and quality of each individual accessory reveals the very essence of the Maserati brand, always searching for the perfect balance between comfort and performance. The car covers and car-care products are just a few examples of the Cleaning and Care line, designed to preserve the charm of Maserati cars over time. The Safety line includes child seats and a water-repellent windscreen treatment. The range is completed by the Travel line accessories, which include winter tires and a luggage compartment net, to make the most out of your car. These are just some examples of the items available that make the Maserati driving experience unique for our customers.

MASERATI CLASSICHE

Created for enthusiasts and owners of vintage Maserati cars, Maserati Classiche is an organization that is dedicated to those who wish to engage with the marque's glorious past. The Maserati Classiche range of products includes items that celebrate the company's 99-year history: paintings of glorious events, pictures of classic Maseratis, original reproductions of parts catalogs, owners' handbooks and old brochures, clothing, scale models and much, much more. All the latest items can be found on maserati.com in the Maserati—Maserati Classic section. Or for more information, email maserati.classiche@maserati.com



MANUFACTURING

A GLORIOUS COLLABORATION OF MAN AND MACHINE.

While Maserati headquarters and manufacturing have long been based in Modena, Italy, production of the Quattroporte flagship sedan is located at a recently opened Maserati plant in Grugliasco, Italy—outside of Turin. The plant is named after company patriarch Giovanni “Gianni” Agnelli, honoring Gianni’s strong connection with the Turin area. One billion euros were invested in renewing this plant, anticipating growing global sales. While the latest technology is utilized to help with fitting parts, skilled technicians man each station, keeping the assembly a handcrafted affair. Utilizing proven practices developed through the company’s World-Class Manufacturing (WCM) system, the plant has a strong culture dedicated to producing the highest quality cars possible. Each car is built to order—and with literally millions of combinations of mechanical and interior specifications possible, a document goes with each car and is signed at each station to ensure that the exact car is built to each customer’s personal requirements.

After completion, the Quattroporte is subjected to all manner of quality-control tests, looking at everything from the integrity of its weatherproofing to its handling on different road surfaces. Each car is tested on a wide mix of different local roads, including mountains, motorways and city streets. Each one goes through a series of checkpoints before it is checked again by an independent contractor, who double-checks the vehicle one more time. Finally, senior Maserati inspectors go over the vehicle with a white-glove treatment, wrapping it in a protective covering before it makes its way to the importer—then to the dealer and, ultimately, to the customer. It is this kind of care and pride-in-presentation that is second to none.





©2016 Maserati North America, Inc. All rights reserved. Maserati and the Trident logo are registered trademarks of Maserati SpA. Maserati urges you to obey all posted speed limits. The illustrations and text contained in this brochure are based on the information available at the time of printing and do not contain a description of specific characteristics of the car by the manufacturer. Some models, equipment and accessories may not be available or may only become available after the car's launch on the market. Maserati reserves the right to modify colors, designs and technical features at any time and without prior notice. Contact your authorized Maserati Dealer for further details.

WWW.MASERATIUSA.COM

1-877-MY MASERATI / DRIVEMASERATI@MASERATIUSA.COM

MASERATI NORTH AMERICA, INC. / 250 SYLVAN AVENUE / ENGLEWOOD CLIFFS, NJ 07632