

zoom-zoom



A QUICK REMINDER OF WHAT THE "S" IN SUV STANDS FOR.

AVAILABLE 201-HP V6 ENGINE 4-WHEEL INDEPENDENT SUSPENSION PRECISE RACK-AND-PINION STEERING SOLID UNIBODY CONSTRUCTION UP TO 74 CU. FT. OF CARGO SPACE* AVAILABLE ON-DEMAND 4-WHEEL DRIVE



*Cargo is subject to weight and distribution restrictions.

FIND OUT JUST HOW FAR 201 HORSES CAN TAKE YOU.

In a category cluttered with the overweight, underpowered and less-than-agile, Mazda Tribute delivers the unexpected. An SUV with the soul of a sports car. Note the spirited performance of its available 201-hp, 3.0-liter V6 and electronically controlled 4-speed automatic transmission. The precision of its highly responsive rack-and-pinion steering. And the crisp handling of its fully independent suspension system. The bar for SUVs has been raised. Big time. And as you slice through city traffic, hustle down a highway or up a mountain road in your Mazda Tribute, you'll quickly appreciate just how much.



NO POWER SHORTAGES HERE. A potent 201-hp, 3.0-liter, 24-valve, DOHC V6 is available in the Mazda Tribute. Its base engine is a responsive, yet fuel-efficient, 130-hp, 2.0-liter, 16-valve, DOHC 4-cylinder. Both powerplants are offered in 4x2 and 4x4 models.



EXPAND YOUR CAPACITY TO ENJOY THE TRIP.

The Mazda Tribute's extra cargo space and capacity for fun have a way of growing on you. Because when you fold its rear seatback forward, Mazda Tribute rolls out a generous 74.4 cubic feet of cargo space¹—plus a conveniently flat load floor. Perfect for everything from outdoor gear, sports equipment and pets to bikes and

building supplies. Access is a snap, too, because the rear liftgate window opens separately—allowing the Tribute to accommodate even 4x8 sheets of plywood. To top it all off, literally and figuratively, a sturdy roof rack with adjustable crossbars is standard on all Tributes.² Add the available Tow Package, which includes a trailer wiring harness, and

your V6-powered Mazda Tribute can tow up to 3,500 pounds. Down the road, you'll also enjoy the extra peace of mind that the **2004 Mazda Driver's Assurance Plan** delivers. A more liberating approach to vehicle ownership, it includes a generous **48-month/50,000-mile "bumper-to-bumper" limited warranty, 24/7 Emergency Roadside Assistance, plus the Mazda Service**

Transportation Solution that can typically provide you with another vehicle to drive should your new Mazda require a warranty repair.³ After all, we want your new Mazda Tribute to be a source of pride and exhilaration for years to come.

1: Cargo is subject to weight and distribution restrictions. 2: The amount and placement of cargo can significantly affect vehicle handling. Roof-rack payload limited to 100 pounds. See owner's manual for more information. 3: See dealer for details.



SPLIT PERSONALITY. Both the Mazda Tribute ES-V6 and LX-V6 feature a versatile 60/40 split rear seatback. Also standard on the ES-V6, and available on the LX-V6, is a handy retractable cargo area cover for whenever you want to keep your cargo out of sight.



LOFTY STANDARDS. For added safety, the liftgate provides a high clearance height that even accommodates 6-footers—plus a built-in liftgate window washer/wiper. For even more passenger comfort, all rear windows—including the liftgate—are privacy tinted.





SAFETY IN NUMBERS. Mazda Tribute's built-in safety features include 2nd-generation dual front air bags* and 3-point safety belts for all outboard seating positions. For added protection, front side-impact air bags are standard on the ES-V6 and available on the LX-V6.



ENJOY A COCKPIT THAT DELIVERS 360 DEGREES OF EXHILARATION.

True to its sports-car heritage, the Mazda Tribute's cockpit promotes driver input in a host of precise and practical ways—while also delivering impressive levels of convenience and comfort. The driver's seat is firmly supportive. All essential controls are within easy reach. Large, easy-to-read gauges minimize driver distraction. A tilt steering wheel and CFC-free air conditioning are standard—as are power windows, outside mirrors and door locks. A 100-watt, 4-speaker AM/FM/CD audio system delivers exquisite sound. In fact, everywhere you look you'll see an interior that's in touch with your active lifestyle.

*Always wear your safety belt and secure children in the rear seat.

OVER AND ABOVE. A convenient overhead storage console on the Mazda Tribute ES-V6 provides the ideal place for sunglasses. This thoughtful feature is also available on the LX-V6.



HOLD EVERYTHING. The center console's dual cup holders are remarkably versatile. Both the ES-V6 and LX-V6 models also provide a covered storage tray with a built-in armrest. The DX model's console features an open storage tray. Even rear-seat passengers get their own cup holders.



THE INSIDE TRACK ON WHAT MAKES TRIBUTE SO EXHILARATING.



ENGINEERED TO BE FAR MORE THAN JUST A FAIR-WEATHER FRIEND.

Mazda Tribute is the ideal SUV for those who can't imagine themselves driving the typical SUV. Its lean, handsomely chiseled styling, standard front-wheel drive, available 201-hp V6, and refined road manners deliver true exhilaration—at a stoplight or at highway speed. Yet its compelling blend of style, versatility

and sportiness is complemented by an array of safety features. Including Mazda's "Triple H" steel reinforcements in key areas of the roof, floor and body structure. Plus integral "crumple zones" to help absorb impact energy. An advanced Anti-lock Brake System (ABS) with Electronic Brakeforce Distribution (EBD) is

standard on the ES-V6 and available on the LX-V6. Which means, wherever you go in a Mazda Tribute, you'll be making a safe getaway. Speaking of getaways, add Mazda's enhanced Web site to your list of must-see destinations. You can preview all the new 2004 Mazdas. Look into seasonal incentives or special money-

saving service offers. Pick up maintenance tips. Visit the Mazda Performance Corner for updates on driving technology, tuning and motor sports. Interactively "build" the Tribute of your dreams and see how it will look. Request a quote. Even locate a Mazda dealer. It all translates into a lot more Zoom-Zoom at: www.MazdaUSA.com.



FOUR SIGHT. If your world includes mud, ice and snow, you'll be glad to know that Mazda Tribute is available with an automatic on-demand 4-wheel-drive system, featuring advanced Rotary Blade Coupling (RBC) technology that delivers power "as required" to the rear wheels. It also includes a lockable center differential for extreme conditions.



MECHANICAL FEATURES

	DX	LX-V6	ES-V6
2.0L DOHC 16-valve 4-cylinder engine with 130 hp	S	—	—
3.0L DOHC 24-valve V6 engine with 201 hp	—	S	S
5-speed manual overdrive transmission	S	—	—
4-speed automatic overdrive transmission	—	S	S
Front-wheel drive	S	S	S
Power-assisted rack-and-pinion steering with engine-speed-sensing variable assist	S	S	S
Power-assisted front disc/rear drum brakes	S	S	S
Anti-lock Brake System (ABS) with Electronic Brakeforce Distribution (EBD)	—	O	S

EXTERIOR FEATURES

	DX	LX-V6	ES-V6
16-inch 6-spoke alloy wheels, P215/70R16 all-season tires	S	—	—
16-inch 5-spoke alloy wheels, P235/70R16 all-season tires	—	S	S
Molded-color bumpers and lower body trim	S	—	—
Painted bumpers and lower body trim	—	S	S
Painted wheel-arch moldings	—	S	S
2-speed variable-intermittent wipers	S	S	S
Intermittent rear wiper/washer	S	S	S
Flip-up liftgate window	S	S	S
Privacy-tint glass on rear windows and liftgate	S	S	S
Clear-lens halogen headlights with automatic delayed shutoff	S	S	S
Clear-lens halogen fog lights	—	S	S
Roof rack with adjustable crossbars	S	S	S

INTERIOR FEATURES

	DX	LX-V6	ES-V6
2nd-generation dual front air bags*	S	S	S
Reclining front bucket seats	S	S	S
Adjustable driver's seat height	—	O	S
Adjustable driver's lumbar support	—	S	S
6-way power driver's seat	—	O	S
1-piece fold-down rear seat	S	—	—
60/40 split fold-down rear seat with reclining seatbacks	—	S	S
Cloth upholstery	S	S	—
Leather-trimmed upholstery† and steering-wheel rim	—	—	S
Carpet floor mats	S	S	S
Retractable cargo cover	—	O	S
Power windows with driver's 1-touch-down feature	S	S	S
Power door locks with 2-stage unlocking	S	S	S
Remote keyless illuminated entry system	S	S	S
Engine-immobilizer antitheft system	S	S	S
10-minute key-off power reserve for windows and moonroof	S	S	S
Tilt steering column	S	S	S
Cruise control with steering-wheel-mounted controls	—	S	S
Front and rear cup holders	S	S	S
Center console with open storage tray	S	—	—
Center console with covered storage and armrest lid	—	S	S
Overhead storage console	—	P	S
Dual vanity mirrors with covers; overhead map light	S	—	—
Dual illuminated vanity mirrors with covers; overhead map light	—	S	S
Heater/defroster with rear-seat heater ducts	S	S	S
CFC-free air conditioning; rear window defogger	S	S	S
100-watt AM/FM/CD stereo with 4 speakers and digital clock	S	S	S

S : Standard O : Optional P : Package A : Dealer-installed accessory — : Not available
 *Always wear your safety belt and secure children in the rear seat. †Seating surfaces upholstered in leather except for leather-look vinyl on seat side panels, rear sides of seatbacks and other minor areas.

www.MazdaUSA.com
 Wherever you see this symbol, you can get the whole story on our interactive Web site.

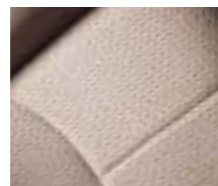
INTERIOR FABRICS



MEDIUM PEBBLE BEIGE CLOTH
Tribute DX



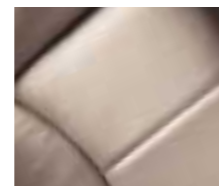
DARK FLINT GRAY CLOTH
Tribute DX



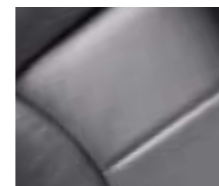
MEDIUM PEBBLE BEIGE CLOTH
Tribute LX-V6



DARK FLINT GRAY CLOTH
Tribute LX-V6



MEDIUM PEBBLE BEIGE LEATHER
Tribute ES-V6



DARK FLINT GRAY LEATHER
Tribute ES-V6

OPTIONS AND OPTION PACKAGES

	DX	LX-V6	ES-V6
Cold Package: Heated front seats; heated door mirrors	—	—	O
Tow Package: Frame-mounted Class II hitch receiver with 3500-lb capacity; engine-oil cooler; trailer wiring harness	—	O	O
Premium Audio Package: 190-watt AM/FM/cassette stereo with in-dash 6-disc CD changer; 7 speakers, including subwoofer; digital clock	—	O	O
Luxury Package: Premium Audio Package; power sliding-glass moonroof with interior sunshade; overhead storage console (LX-V6)	—	O	O
Automatic on-demand 4-wheel drive with Rotary Blade Coupling (RBC) and lockable center differential	O	O	O
Anti-lock Brake System (ABS) with Electronic Brakeforce Distribution (EBD)	—	O	S
6-way power driver's seat	—	O	S
Front side-impact air bags* (requires ABS)	—	O	S
Rear spoiler	O/A	O/A	O/A
Rear bumper step plate	O/A	O/A	O/A
Door edge guards, color-keyed	O/A	O/A	O/A
Side step tubes	O/A	O/A	O/A
Wheel locks	O/A	O/A	O/A
All-weather floor mats	O/A	O/A	O/A
Cargo net	O/A	O/A	O/A
Cargo tray	O/A	O/A	O/A
Cargo tray and organizer	O/A	O/A	O/A
Retractable cargo cover	—	O	S
Perimeter alarm	O	O	O
Compass and outside temperature auto-dimming mirror	O/A	O/A	O/A
Compass and outside temperature auto-dimming mirror with HomeLink®	O/A	O/A	O/A
In-dash 6-disc CD changer	O/A	O/P/A	O/P/A
Cassette player	O/A	O/P/A	O/P/A
DVD entertainment system (not available with Luxury Package)	O/A	O/A	O/A

SPECIFICATIONS

	DX	LX-V6, ES-V6
Engine size and type	2.0L DOHC 16-valve 4-cylinder	3.0L DOHC 24-valve V6
Horsepower, SAE Net	130 @ 5400 rpm	201 @ 5900 rpm
Torque, SAE Net lb-ft	135 @ 4500 rpm	196 @ 4700 rpm
Ignition system	Distributorless electronic ignition	
Fuel system; recommended fuel type	Multiport electronic fuel injection; regular unleaded gasoline	
EPA estimated fuel economy, mpg	2WD: 23 city/28 highway 4WD: 22 city/25 highway	2WD: 19 city/25 highway 4WD: 18 city/23 highway
Body construction	Unitized steel with "Triple H" construction	
Steering	Rack-and-pinion with engine-speed-sensing variable power assist	
Turning circle, curb-to-curb	35.4 feet	36.8 feet
Base curb weight	2WD: 3050 lb 4WD: 3207 lb	2WD: 3321 lb 4WD: 3491 lb

EXTERIOR DIMENSIONS (inches)

	DX	LX-V6, ES-V6
Wheelbase/overall length	103.1/173.0	103.1/173.0
Overall width	70.8	71.9
Overall height	69.3	69.9
Track, front/rear	60.6/59.8	61.0/60.2
Ground clearance	7.9	8.4

INTERIOR DIMENSIONS (inches)

	DX	LX-V6, ES-V6
Headroom, front/rear with moonroof	40.3/38.9	40.3/38.9
Headroom, front/rear	—	38.2/36.9
Legroom, front/rear	41.7/36.9	41.7/36.9
Shoulder room, front/rear	55.9/55.7	55.9/55.7

CAPACITIES

	DX	LX-V6, ES-V6
Cargo volume, rear seat up (cubic feet)	33.1	33.1
Cargo volume, rear seat folded (cubic feet)	74.4	74.4
Passenger volume (cubic feet)	100.7	100.7
Passenger volume with moonroof (cubic feet)	—	95.6
Roof-rack payload (lb)	100	100
Fuel tank capacity (gallons)	16.4	16.4

EXTERIOR COLORS



GLACIER SILVER METALLIC

- Mazda Tribute DX Dark Flint Gray Cloth
- Mazda Tribute LX-V6 Dark Flint Gray Cloth
- Mazda Tribute ES-V6 Dark Flint Gray Leather

DARK TITANIUM METALLIC

- Mazda Tribute DX Dark Flint Gray Cloth
- Mazda Tribute LX-V6 Dark Flint Gray Cloth
- Mazda Tribute ES-V6 Dark Flint Gray Leather

PEBBLE ASH METALLIC

- Mazda Tribute DX Dark Flint Gray Cloth
- Mazda Tribute LX-V6 Dark Flint Gray Cloth
- Mazda Tribute ES-V6 Dark Flint Gray Leather



REDFIRE METALLIC

- Mazda Tribute DX Dark Flint Gray Cloth
- Mazda Tribute LX-V6 Dark Flint Gray Cloth
- Mazda Tribute ES-V6 Dark Flint Gray Leather



CALYPSO BLUE METALLIC

- Mazda Tribute DX Dark Flint Gray Cloth
- Mazda Tribute LX-V6 Dark Flint Gray Cloth
- Mazda Tribute ES-V6 Dark Flint Gray Leather



LIGHT TUNDRA METALLIC

- Mazda Tribute DX Dark Flint Gray Cloth
- Mazda Tribute LX-V6 Dark Flint Gray Cloth
- Mazda Tribute ES-V6 Dark Flint Gray Leather



MERLOT PEARL METALLIC

- Mazda Tribute DX Medium Pebble Beige Cloth
- Mazda Tribute LX-V6 Medium Pebble Beige Cloth
- Mazda Tribute ES-V6 Medium Pebble Beige Leather



CLASSIC WHITE CLEARCOAT

- Mazda Tribute DX Medium Pebble Beige Cloth
- Mazda Tribute LX-V6 Medium Pebble Beige Cloth
- Mazda Tribute ES-V6 Medium Pebble Beige Leather



MYSTIC BLACK CLEARCOAT

- Mazda Tribute DX Medium Pebble Beige Cloth
- Mazda Tribute LX-V6 Medium Pebble Beige Cloth
- Mazda Tribute ES-V6 Medium Pebble Beige Leather

ACCESSORIES



- Full or half-front mask
- Hood bug deflector
- Front mud guards
- Rear mud guards
- Moonroof wind deflector
- Door edge guards
- Side step tubes
- Rear spoiler
- Rear bumper step plate
- Windshield sunscreen
- Compass and outside temperature auto-dimming mirror with HomeLink®(shown below)
- Compass and outside temperature auto-dimming mirror
- Interior dust and pollen filter
- In-dash 6-disc CD changer
- Cassette player
- MiniDisc player
- DVD entertainment system (shown below)
- All-weather floor mats
- Roof luggage basket with stretch net
- Roof cargo box
- Bike attachment (roof-rack or trailer-hitch mount)
- Ski attachment (roof-rack mount)
- Cargo Organizer/Cargo Tray (shown below)
- Cargo net
- Cargo divider
- Car cover; car cover cable lock
- First aid kit
- Roadside emergency kit
- Wheel locks
- Engine block heater
- Touch-up paint



PRODUCT CHANGES AND OPTIONS AVAILABILITY: Following publication of this brochure, certain changes in standard equipment, options, prices and the like, or product delays may have occurred which would not be included in these pages. Your Mazda dealer is your best source for up-to-date information. Mazda reserves the right to change product specifications at any time without incurring obligations. Options shown or described in this brochure are available at extra cost and may be offered only in combination with other options or subject to additional ordering requirements or limitations.

All Genuine Mazda Accessories, if installed by a Mazda dealer prior to or at initial vehicle retail delivery, carry the same new-vehicle limited warranty as the Mazda Tribute. Ask your dealer for details.

700M - 700M