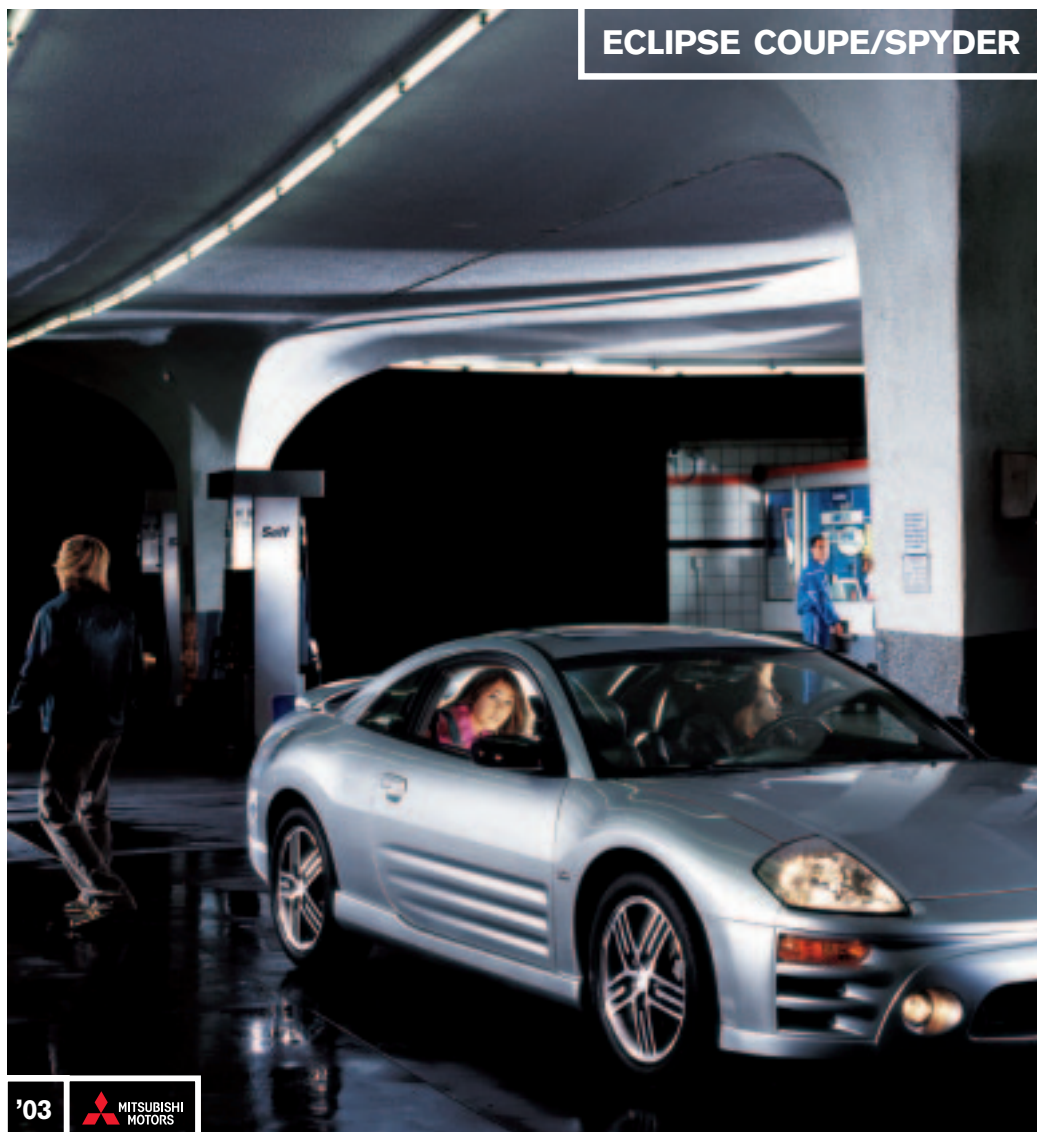


ECLIPSE COUPE/SPYDER



'03







GEO-MECHANICAL DESIGN 15%

31% 17" FIVE-SPOKE ALLOY WHEELS*



54% ELIMINATES YOUR NEED FOR A PICK-UP LINE

There's a lot of reasons to buy the new Eclipse. But let's be honest, how it makes you look and feel are going to top the list. And they should. A car is a piece of you parked out there on the side of the road. It's your very own 3000 lb business card. What do you want yours to say?

*optional equipment

STYLING

Incorporating Mitsubishi's distinct "geo-mechanical" styling, the newly resculpted front end brings the '03 truer to the concept car than any model to date. And it lets you know it. Boasting 17", five-spoke alloy wheels, two-tone graphite-lined taillight clusters and truly integrated foglights, you can rest assured a lot of thought went into the styling of the Eclipse. Even if it was to fuel your neighbor's fear they bought the wrong car.



mitsubishicars.com/styling



**A GLASS GARAGE
SUDDENLY DOESN'T SEEM
SO IMPRACTICAL**

Not all features standard on every Eclipse model. See specifications for details on optional equipment and accessories.

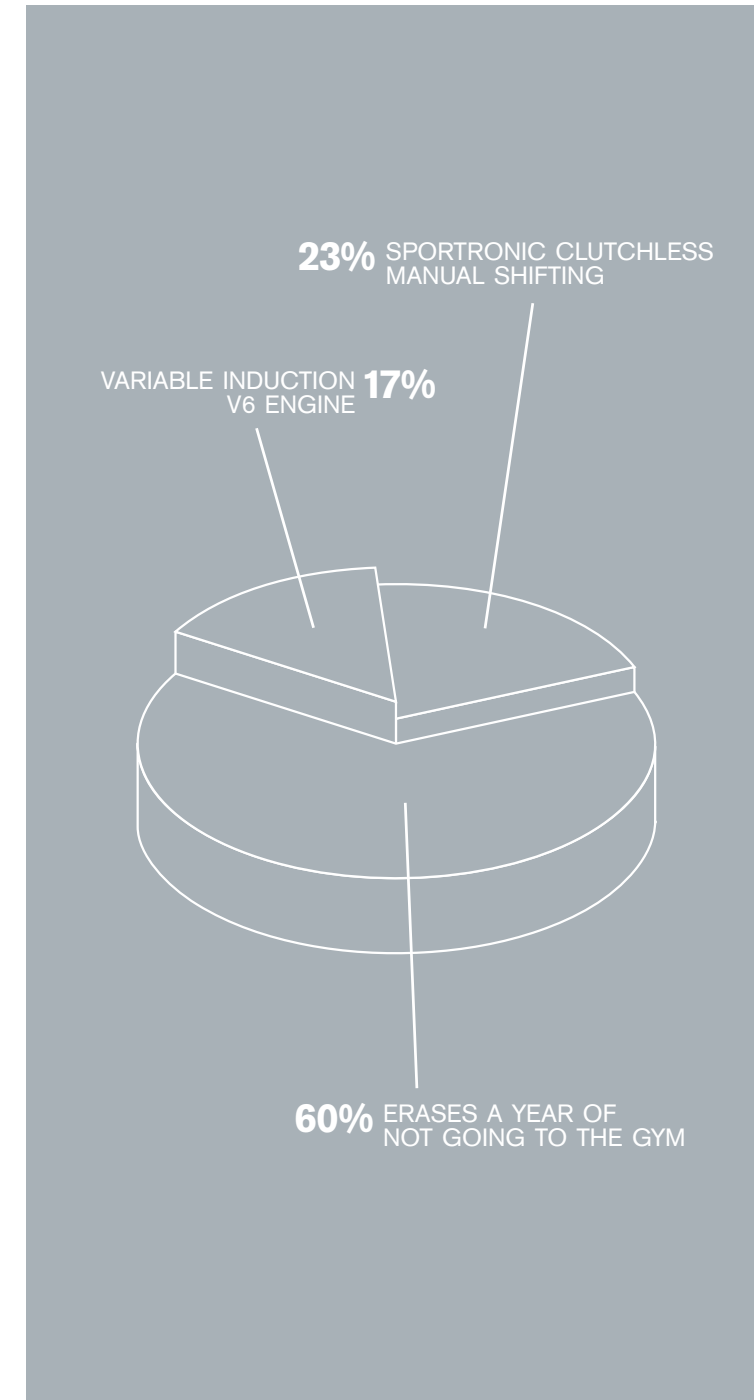


SPYDER

When you own a car like this, you want people to know it. And what better way than to give the roof a sabbatical. But don't get the impression this car is a sawed-off version of its coupe cousin. The Spyder was conceived and built to the true specifications of a convertible. Which means you won't find any bulky reinforcements to add weight, or worse yet, to detract from its looks. In fact, you'll likely need a bottle of Windex® to wipe the envy off this car. And the defroster in the glass rear window will make sure you'll catch every jealous glance with self-indulgent clarity. Throwing the switch to your 210W, seven-speaker CD system won't exactly slow the stares either. In fact, forcing your musical tastes on others has never been easier. Just release the latches and hit the one-button power roof retraction. In 15 seconds the top is lowered and all four windows are down, giving you a 360-degree gloating zone. It's almost a shame to hide the European-quality 3-layer soft top, but let's drop the charade, you never bought the Spyder to have it up in the first place.

mitsubishicars.com/spyder





PERFORMANCE

Harboring a 210-hp, 3.0L Variable Induction V6, you almost need a straitjacket to keep this car parked. And with the RS and GS sporting 2.4-liter, 16-valve power plants, you get the impression they're not resting lightly either. Especially since these efficient engines produce 90% of their torque under 2000 rpm. In other words, this car can do a lot more than just strut. And putting this power to the road is no problem. With the sporty 5-speed manual you're in great hands. Your own. But if you want something to take care of the grunt work, there's always the 4-speed adaptive shift control automatic. It learns, then implements gear transitions to match your driving style. How does it do it? Do you really care? Just repeating that last sentence will impress somebody. But if that doesn't light their candle, you can always tell them about the clutchless Sportronic™ shift system. Who has time for a clutch anyway? Tap up or down through the gears at will, even during acceleration. Handling won't be a problem either. Thanks to the 4-wheel disc brakes, rack-and-pinion steering and up-front Macpherson struts. The 4-wheel independent suspension with stabilizer bars is pretty convenient too when you have to take, oh, what do you call those again, oh yeah, corners.





INTERIOR

Ahh, the interior. The arena where relationships will be severed, and friendships secured, the moment you decide who rides shotgun. Take your time. The leather-trimmed, driver side 12-way adjustable power seat offers a comfortable location for this critical decision. Not that anyone in the sporty two-tone accented cockpit will be complaining. In fact, once you use the steering wheel audio controls to crank up the Mitsubishi/Infinity® 6-disc, in-dash 7-speaker audio system, you'll start thinking about the benefits of a cover charge. Meanwhile, the one-touch power sunroof is letting everyone at the intersection know your taste in CDs is as good as it is in cars. As far as other features like air, tilt, power, and cruise – it's got them all. But it's details like dual 12-volt outlets that really come in handy. When? Well, we don't know. But we're sure you'll think of something.

mitsubishicars.com/interior

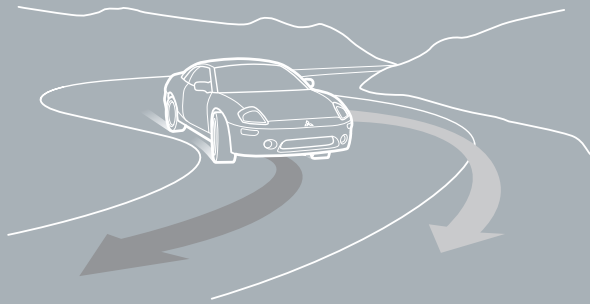
Not all features standard on every Eclipse model. See specifications for details on optional equipment and accessories.

**WE NEEDED
SOMETHING TO
GET YOU TO LOOK
AT THE INSIDE**



SECURITY

This year's Eclipse gives you confidence on a lot of different levels. With a sophisticated anti-lock braking system, 4-wheel disc brakes and automatic traction control, the GTS offers surefooted comfort in any weather condition. Unfortunately, not all vehicles on the road are this well prepared. That's why we've equipped the Eclipse with a great defense in standard dual front air bags*, available dual side air bags* and our Refined Impact Safety Evolution (RISE) chassis. Designed to provide greater protection in a side collision, the flex-resistant RISE chassis is reinforced with steel side-impact door beams and energy-absorbing crumple zones. And with the available single-button panic feature on our remote keyless entry, the Eclipse doesn't only help to protect you when you're on the inside, it's also got you covered when you're out. Of course the '03 Eclipse itself is well fortified with an anti-theft engine immobilizer, and the GTS even comes with its own factory-installed security alarm system. What better way to silently scream "look but don't touch." It's all part of the '03 Eclipse. Securing a lot more than just your ego.



Buying a car can be an overwhelming process. Keep in mind Mitsubishi makes it easy with two simple questions. How are you going to feel when you walk towards your car? And how many times will you look back when you walk away? The '03 Eclipse. Are you in?

FEATURES LIKE THESE OUGHT TO BE WRAPPED.

IT'S THE EXTRAS THAT COME STANDARD ON ALL '03 MITSUBISHI CARS.

- Dual front air bags¹
- 3-point safety belts at all seating positions
- Height-adjustable front safety belt anchors
- Steel side-guard door beams
- Child safety locks
- Front wheel drive
- 4-wheel independent suspension
- Power-assisted rack-and-pinion steering
- RISE chassis
- Unibody construction
- Stainless steel exhaust system
- Air conditioning
- Power windows + driver side auto-down
- Power door locks
- Power-assisted brakes
- Adaptive shift control (when equipped with auto transmission)
- Rear window defroster
- Adjustable steering column
- Auto-off headlights
- Remote release for hood and trunk

OPTIONAL EQUIPMENT

SUN AND SOUND PACKAGE for Eclipse GS/GT

One-touch power sunroof + vent feature • 210W Mitsubishi/Infinity® AM/FM/CD Premium audio system + 7 speakers + diversity antenna • Steering wheel-mounted audio controls

SUN, SOUND AND LEATHER PACKAGE for Eclipse GT

Contents as Sun and Sound Package plus leather front seating surfaces

MAJOR OPTION for Eclipse Spyder GS/GT

Leather front seating surfaces

¹ Always place an infant in a rear-facing infant seat in the rear seat. Always transport children 1 to 12 years old in the rear seat and use appropriate child restraints. Always buckle your safety belt. Keep 10" between the center of the air bag cover and your breastbone. Sit well back and upright without leaning against the window or door.
² EPA fuel use estimates to be used as a standardized comparison with other vehicles. Your mileage may vary depending on driving style and environmental conditions.
³ Requires Sportronic transmission

ECLIPSE COUPE RS



Shown in Kalapana Black

FEATURES

- 140W Mitsubishi AM/FM/CD + 4 speakers
- Whip antenna
- 12-volt accessory outlets (2)
- Cargo cover
- Fold-down rear seatback
- 15" alloy wheels

COMFORT

- 8-way adjustable driver seat
- Center console + storage compartment
- Interior lights + dimming feature
- Vanity mirrors
- Sport fabric

POWERTRAIN

- 142-hp 2.4L 16-valve inline-4 engine
- 5-speed manual *or*
- 4-speed automatic transmission

FUEL USE

- 5-speed MT 23/31 (city/highway)
- 4-speed AT 21/28
- Fuel tank (gal) 16.4

ECLIPSE SPYDER GS



Shown in Sterling Silver Metallic

FEATURES

- 210W Mitsubishi/Infinity AM/FM/CD + 7 speakers
- Steering wheel-mounted audio controls
- Tinted glass + shade band
- Power sideview mirrors
- Power soft top with glass rear window
- Keyless entry + security alarm
- Lockable, illuminated glove compartment
- Rear spoiler
- 16" alloy wheels
- Front and rear stabilizer bars
- Integrated fog lights

COMFORT

- 10-way adjustable driver seat
- Center console + armrest + storage
- Interior lights + dimming feature
- Illuminated vanity mirrors
- Cruise control
- Leather-wrapped steering wheel

POWERTRAIN

- 142-hp 2.4L 16-valve inline-4 engine
- 5-speed manual *or*
- 4-speed Sportronic™ transmission

FUEL USE²

- 5-speed MT 23/30 (city/highway)
- Sportronic 20/26
- Fuel tank (gal) 16.4

ECLIPSE COUPE GS



Shown in Steel Blue Pearl

FEATURES

- 140W Mitsubishi AM/FM/CD + 6 speakers
- Rear glass antenna
- Tinted glass + shade band
- Power sideview mirrors
- 12-volt accessory outlets (2)
- Keyless entry
- Illuminated glove compartment
- Cargo cover
- 50/50 split fold-down rear seatback
- Rear spoiler
- 16" alloy wheels
- Front and rear stabilizer bars

COMFORT

- 10-way adjustable driver seat
- Center console + armrest + storage
- Interior lights + dimming feature
- Illuminated vanity mirrors
- Cruise control
- Leather-wrapped steering wheel

POWERTRAIN

- 142-hp 2.4L 16-valve inline-4 engine
- 5-speed manual *or*
- 4-speed Sportronic transmission

FUEL USE

- 5-speed MT 23/31 (city/highway)
- Sportronic 21/28
- Fuel tank (gal) 16.4

ECLIPSE SPYDER GT



Shown in Alloy Green Pearl

FEATURES

- 210W Mitsubishi/Infinity AM/FM/CD + 7 speakers
- Power antenna
- Steering wheel-mounted audio controls
- Tinted glass + shade band
- Power sideview mirrors
- Power soft top with glass rear window
- Keyless entry + security alarm
- Rear spoiler
- 4-wheel disc brakes
- 17" alloy wheels
- Front and rear stabilizer bars
- Integrated fog lights

COMFORT

- 10-way adjustable driver seat
- Center console + armrest + storage
- Leather-wrapped steering wheel + shifter
- Cruise control

POWERTRAIN

- 210-hp 3.0L 24-valve V6 engine + Variable Induction air intake management
- 5-speed manual *or*
- 4-speed Sportronic transmission

FUEL USE

- 5-speed MT 21/29 (city/highway)
- Sportronic 20/27
- Fuel tank (gal) 16.4

ECLIPSE COUPE GT



Shown in Titanium Pearl

FEATURES

- 140W Mitsubishi AM/FM/CD + 6 speakers
- Rear glass antenna
- Tinted glass + shade band
- Power sideview mirrors
- 12-volt accessory outlets (2)
- Keyless entry
- 50/50 split fold-down rear seatback
- Rear spoiler
- 17" alloy wheels
- 4-wheel disc brakes
- Integrated fog lights
- Chrome exhaust tip

COMFORT

- 10-way adjustable driver seat
- Premium Sport fabric
- Interior lights + dimming feature
- Cruise control

POWERTRAIN

- 200-hp 3.0L 24-valve V6 engine
- 5-speed manual *or*
- 4-speed Sportronic transmission

FUEL USE

- 5-speed MT 21/28 (city/highway)
- Sportronic 20/27
- Fuel tank (gal) 16.4

ECLIPSE SPYDER GTS



Shown in Chrome Blue Pearl

FEATURES

- 210W Mitsubishi/Infinity AM/FM/CD + 6-CD in-dash changer + 7 speakers
- Power antenna
- Steering wheel-mounted audio controls
- Power sideview mirrors
- Keyless entry + security alarm
- Dual front side air bags
- ABS + traction control³
- 17" polished alloy wheels
- 4-wheel disc brakes
- Integrated fog lights

COMFORT

- 12-way adj. (6-way power) driver seat
- Textured-leather front seating surfaces
- Cruise control

POWERTRAIN

- 210-hp 3.0L 24-valve V6 engine + Variable Induction air intake management
- Two transmissions available (as GT)

FUEL USE

- 5-speed MT 21/29 (city/highway)
- Sportronic 20/27
- Fuel tank (gal) 16.4

ECLIPSE COUPE GTS



Shown in Ultra Red Pearl

FEATURES

- 210W Mitsubishi/Infinity AM/FM/CD + 6-CD in-dash changer + 7 speakers
- Steering wheel-mounted audio controls
- Power sideview mirrors
- Compass + outside temperature display
- Keyless entry + security alarm
- ABS + traction control³
- Dual front side air bags
- 50/50 split fold-down rear seatback
- Rear wiper
- 17" polished alloy wheels
- 4-wheel disc brakes
- Integrated fog lights
- One-touch power sunroof

COMFORT

- 12-way adj. (6-way power) driver seat
- Textured-leather front seating surfaces
- Cruise control

POWERTRAIN

- 210-hp 3.0L 24-valve V6 engine + Variable Induction air intake management
- 5-speed manual *or*
- 4-speed Sportronic transmission

FUEL USE

- 5-speed MT 21/28 (city/highway)
- 4-speed AT 20/27
- Fuel tank (gal) 16.4

ACCESSORIES

Make it your own. There's no better way than with perfect fit Mitsubishi Genuine Accessories. Add them at time of purchase and they'll not only be installed, but covered under a 3yr/36,000-mile limited warranty. And even better, you may be able to work them into your low monthly car payment. Shield against rogue stones, and send bugs to a leathery grave with the custom nose mask. Drown their screams with the 6-CD in-dash changer, and relax into the leather-trimmed interior. With these accessories you won't have to go looking for attention. It comes standard.

mitsubishicars.com/accessories



- 6-CD in-dash changer
- Alloy fuel door
- Car cover
- Cargo mat*
- Cargo net*
- Engine block heater
- Hood mask
- Leather-trimmed interior
- License plate frame
- Mudguards
- Nose mask + license plate window
- Nose mask, solid
- Rear spoiler*
- Sunroof wind deflector*
- Wheel locks

*Available for Coupe only



WARRANTIES* Every 2003 Mitsubishi comes with a 3-year/36,000-mile New Vehicle Limited Warranty, a 5-year/60,000-mile Powertrain Limited Warranty, and a 7-year/100,000-mile Anti-Corrosion/Perforation Limited Warranty.

DIAMOND CARE DELIVERY** Your new Mitsubishi will be prepared, inspected and explained to you prior to delivery.
DIAMOND CARE PROTECTION PLAN Extended service coverage is available for up to seven years or 100,000 miles after your purchase.
LEASING AND FINANCING Many leasing and financing programs are available through Mitsubishi Motors Credit of America, Inc. See your Retailer for details. Not all customers will qualify.

DIAMOND CARE ROAD SERVICE Should your Mitsubishi become inoperable due to a warrantable failure in the first three years or 36,000 miles, Mitsubishi Motor Sales of America, Inc. (MMSA) will authorize your vehicle to be towed to the nearest Authorized Retailer or Service Center at no charge. **Towing beyond the three-year or 36,000-mile limit for Diamond Care Road Service is covered and reimbursable if the problem that caused the need for the tow is still covered under warranty.

CONCIERGE SERVICE Available 24 hours a day, 365 days a year for the first three years or 36,000 miles. We'll do everything to get you back on the road and take care of you if you're stranded.

We will assist you in making arrangements such as rental car and hotel reservations. We will also call your home or office to advise family members or colleagues of your inconvenience.

NOTE Technical data, features, options and other equipment shown in this brochure are based on the latest information available at the time of printing and are subject to change without notice. Headlights, parking lights, fog lights and instrument panel lights on vehicles may be illuminated for illustration purposes only. Some vehicles may be shown with optional equipment and accessories.

SAFETY Safety is a two-way street. It requires your attention and cooperation. Please fasten your safety belt, drive responsibly and obey all local traffic laws.

OPTIONAL EQUIPMENT Availability of vehicles with specific features may vary. For further information contact your Retailer. For the Retailer nearest you, call 1-888-MITSU2003 or visit our website at mitsubishicars.com.

* See your Mitsubishi Motors Retailer for all Limited Warranty details.

**Towing will not be covered if your vehicle is drivable and driving would not pose a safety problem or cause further damage to your vehicle or vehicle is inoperable as a result of an accident, owner abuse, lack of maintenance, or driver error. Diamond Care Road Service towing coverage applies only to vehicles within the continental U.S., Alaska and Hawaii.

DIAMOND CARE

EXTERIOR COLORS



Dover White Pearl



Steel Blue Pearl



Titanium Pearl



Alloy Green Pearl



Saronno Red



Sterling Silver Metallic



Flash Blue Pearl



Chrome Blue Pearl



Kalapana Black



Ultra Red Pearl

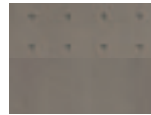
INTERIOR COLORS



Sand Blast Sport Fabric
(RS, GS)



Sand Blast Premium
Sport Fabric (GT)



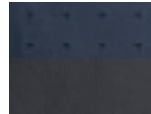
Sand Blast Leather
(GTS)



Midnight Sport Fabric
(RS, GS)



Midnight Premium
Sport Fabric (GT)



Midnight Leather
(GTS)

COLOR SCHEMES

Coupe	Spyder	Exterior Colors	Interior Colors
•	•	Dover White Pearl	Sand Blast/Midnight
•		Steel Blue Pearl	Midnight
•	•	Titanium Pearl	Midnight
	•	Alloy Green Pearl	Sand Blast/Midnight
•	•	Saronno Red	Sand Blast
•	•	Sterling Silver Metallic	Midnight
•		Flash Blue Pearl	Sand Blast/Midnight
	•	Chrome Blue Pearl	Sand Blast/Midnight
•	•	Kalapana Black	Sand Blast/Midnight
•	•	Ultra Red Pearl	Sand Blast/Midnight

WHEEL DETAILS



15" alloy (RS)
P195/65 HR15



16" alloy (GS)
P205/55 HR16



17" alloy (GT)
P215/50 VR17



17" alloy (GTS)
P215/50 VR17

*RS seats and rollers available only in top colors. **Always please an infant in a rear-facing seat. Always transport children 1 to 12 years old in the rear seat and use appropriate child restraints. Always buckle your safety belt. Keep 10" between the center of the front air bag cover and your breast/chest. Sit well back and upright without leaning against the window or door.

ENGINEERING

CHASSIS & SUSPENSION

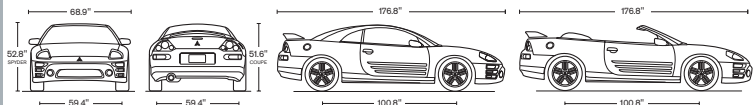
SAFETY

EXTERIOR

DIMENSIONS

	COUPE				SPYDER		
	RS	GS	GT	GTS	GS	GT	GTS
Horsepower:							
147 (manual)/142 (auto) @ 5500 rpm	•	•			•		
200 @ 5500 rpm				•			
210 @ 5750 rpm						•	•
Torque:							
158 lb-ft @ 4000 rpm	•	•			•		
205 lb-ft @ 4000 rpm				•			
205 lb-ft @ 3750 rpm						•	•
Multi-port fuel injection	•	•	•	•	•	•	•
Anti-theft engine immobilizer	•	•	•	•	•	•	•
5-speed manual transmission or 4-speed automatic transmission with adaptive shift control	•						
5-speed manual transmission or Sportronic™ sequential-shift 4-speed automatic transmission		•	•	•	•	•	•
Front independent suspension + MacPherson struts	•	•	•	•	•	•	•
Front stabilizer bar	•	•	•	•	•	•	•
Front strut tower brace				•	•	•	•
Rear independent multi-link suspension + coil springs	•	•	•	•	•	•	•
Rear stabilizer bar		•	•	•	•	•	•
10.9" ventilated front disc/9.0" rear drum brakes	•	•			•		
10.9" ventilated front disc/10.3" rear disc brakes				•	•	•	•
Rack-and-pinion steering	•	•	•	•	•	•	•
SAFETY							
3-point safety belts for all seating positions	•	•	•	•	•	•	•
Height-adjustable front shoulder belt anchors	•	•	•	•	•	•	•
Dual front air bags**	•	•	•	•	•	•	•
Lower anchors for child safety seats					•	•	•
Lower and upper anchors for child safety seats	•	•	•	•			
RISE (Refined Impact Safety Evolution) chassis	•	•	•	•	•	•	•
Impact-protected fuel tank	•	•	•	•	•	•	•
Tubular steel side-guard door beams	•	•	•	•	•	•	•
EXTERIOR							
Power sideview mirrors		•	•	•	•	•	•
Color-keyed bumpers and door handles	•	•	•	•	•	•	•
Electric rear window defroster	•	•	•	•	•	•	•
Side window defroster	•	•	•	•	•	•	•
Integrated fog lights				•	•	•	•
Chrome exhaust tip				•	•	•	•
Side ground effects		•	•		•	•	•

INTERIOR MEASUREMENTS: Headroom (in., front/rear)—Coupe 37.9/34.9, Coupe with sunroof 36.6/34.9, Spyder 39.4/34.5; Legroom (in., front/rear)—Coupe 42.3/30.2, Spyder 42.3/29.4; Cargo Volume (cu ft)—Coupe 16.9, Spyder 7.2





ECLIPSE COUPE



OUTLANDER



MONTERO



MONTERO SPORT



LANCER



GALANT



DIAMANTE



ECLIPSE SPYDER

For over forty years, we've put thoughtful engineering to the test on the international rally circuit. In addition to the obvious thrill of winning, competing against our peers helps us develop and refine new ideas. Ideas that find their way into all our vehicles. Ideas that look good sitting in your driveway.

mitsubishicars.com/heritage



We are Mitsubishi. We build quality cars. Yet we also offer something more. Because while a car should answer your needs, it should also stir your emotions. Like it or not, cars are a window through which the world views us. Through that window we can appear dull and lifeless—sensible to the point of boring. Or we can show the world that our hearts beat strong, and our minds are quick. Mitsubishi takes pride in building cars that ignite the vital spark which often lies sleeping just beneath the surface in each of us. Cars that challenge us to **wake up and drive.™**