



2020

ALTIMA®



The 2020 Nissan Altima® Impossibly Smart

This isn't just a sedan, this is our latest technology, built to unlock the pure joy of driving. How? With the world's first variable compression turbo engine.¹ And Nissan Intelligent Mobility™ that helps you respond to the world around you in real-time.² Confidence from available Intelligent All-Wheel Drive.³ Surprising connectivity before you even reach the driver's seat.⁴ Nissan Altima. This is tech that changes every part of your drive. This is tech that moves.



ProPILOT ASSIST

Stress less and enjoy the drive even more. With the groundbreaking ProPILOT Assist, your Altima takes care of the little things – like helping keep you centered in your lane, and following the car ahead at a preset distance. It can even bring your Altima to a full stop based on the highway traffic flow, and can bring you back up to speed when traffic starts moving again.^{5,6}

HELPS KEEP YOU CENTERED IN GENTLE CURVES

MAINTAINS YOUR PRESET SPEED AND DISTANCE

CAN EVEN COME TO A COMPLETE STOP



NISSAN SAFETY SHIELD® 360

Nissan Intelligent Mobility is changing how you move forever with technology that makes you feel more connected, confident, and excited.

As part of Nissan Intelligent Mobility, Nissan Safety Shield 360 includes features that help you see more, sense more, and can give you an assist when you need it. The following features are optional on S trim, and standard on trim levels SR and above.²

Automatic Emergency Braking with Pedestrian Detection⁷

Rear Automatic Braking⁸

Rear Cross Traffic Alert⁹

Blind Spot Warning¹⁰

Lane Departure Warning¹¹

High Beam Assist



INTELLIGENT AROUND VIEW® MONITOR

Four cameras make parking easy with a virtual composite 360° bird's-eye view of your Altima. You can select from split-screen close-ups of the front, rear, and curbside views for a better look. It also gives you an on-screen heads-up when it detects moving objects near your vehicle. We're looking at you, shopping cart.^{6,12,13}



NISSAN INTELLIGENT MOBILITY™



APPLE CARPLAY® INTEGRATION

People to see? Places to be? Just ask Siri.® Equipped with Siri® voice control, Apple CarPlay® brings on board to your Altima your contacts, favorite messaging apps, iTunes® library, Apple Music® playlists, Apple Maps, and more. Simply plug in your compatible iPhone® and go.^{4,14}



TALK TO YOUR ALTIMA® WITH NISSANCONNECT® SERVICES

With available NissanConnect Services powered by SiriusXM,® you can access your Altima remotely through your NissanConnect Services Skill with Amazon Alexa or Action for the Google Assistant. Start your engine, unlock your doors, and more.^{14,15}



INTELLIGENT ALL-WHEEL DRIVE

Altima gives you peace of mind you never thought you could get from a sedan. Part of Nissan Intelligent Mobility,™ Intelligent All-Wheel Drive continuously monitors road conditions, and responds in an instant, sending power to the wheels that need it most.^{3,6}

236
HORSEPOWER¹⁶

267
LB-FT OF TORQUE¹⁶

34
HWY MPG¹⁷

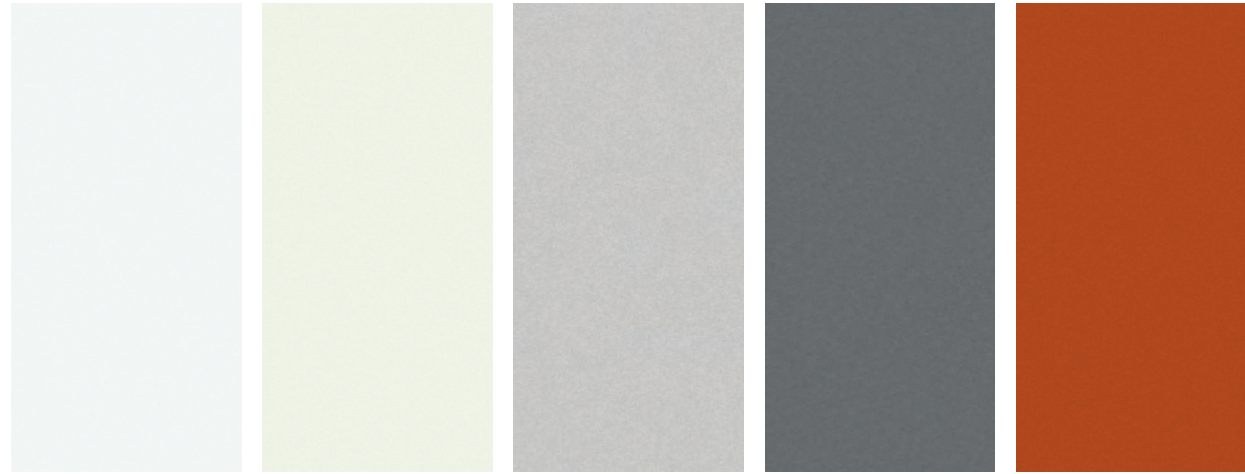


THE WORLD'S FIRST PRODUCTION VARIABLE COMPRESSION TURBO ENGINE¹

Imagine an engine so smart it seems to anticipate what you want. Whether it's turbocharged power that pushes you back in your seat or impressive fuel efficiency, even in city streets,¹⁷ Altima's all-new shape-shifting VC-Turbo™ engine lets you have both - without compromise.⁶

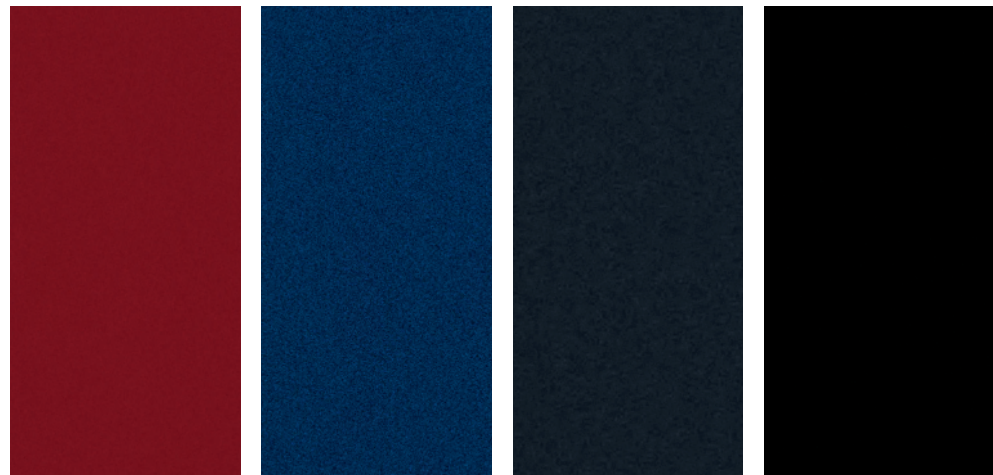


CHOOSE YOUR COLOR



Glacier White Pearl White TriCoat¹⁸ Brilliant Silver Metallic Gun Metallic Sunset Drift ChromaFlair¹⁸

	S	SR	SV	SL	PLT
GRAY CLOTH	■				
CHARCOAL CLOTH	■				
CHARCOAL SPORT CLOTH			■		
GRAY LEATHER				■	■
CHARCOAL LEATHER				■	■



Scarlet Ember Tintcoat¹⁸ Deep Blue Pearl Storm Blue Metallic Super Black

	S	SR	SV	SL	PLT
GRAY CLOTH			■		
CHARCOAL CLOTH			■		
CHARCOAL SPORT CLOTH		■			
GRAY LEATHER				■	■
CHARCOAL LEATHER				■	■

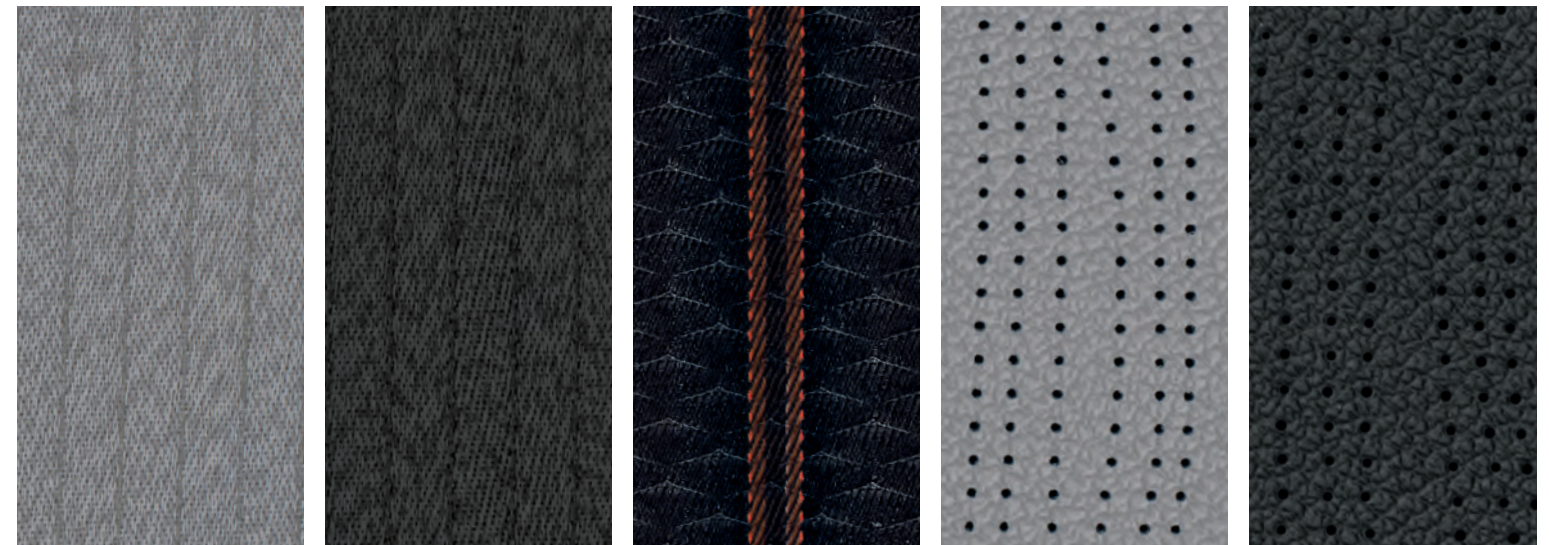
■ Standard

Nissan has taken care to ensure that the color swatches presented here are the closest possible representations of actual vehicle colors. Swatches may vary slightly due to the printing process and whether viewed in daylight, fluorescent or incandescent light. Please see the actual colors at your dealer.

CHOOSE YOUR INTERIOR



Nissan Altima[®] Platinum VC-Turbo[™] shown in Charcoal Leather.



Gray Cloth
S|SV

Charcoal Cloth
S|SV

Charcoal Sport Cloth
SR

Gray Leather
SL|PLATINUM

Charcoal Leather
SL|PLATINUM

CHOOSE YOUR TRIM LEVEL AND PACKAGE

S

188-hp 2.5-liter Direct Injection Gasoline (DIG) 4-cylinder engine • Available Intelligent All-Wheel Drive³ • Intelligent Forward Collision Warning¹⁹ • Automatic Emergency Braking⁷ • RearView Monitor²⁰ • Active Ride Control • Intelligent Trace Control²¹ • Intelligent Driver Alertness²² • 16" Steel wheels with bolt-on wheel covers • Intelligent Auto Headlights • Nissan Intelligent Key[®] with Push Button Ignition • Remote Engine Start System¹⁵ • 8-way power adjustable driver's seat • Carbon-fiber look interior trim • Advanced Drive-Assist[®] Display^{23,24} • NissanConnect[®] 8" touch-screen display¹⁴ • Apple CarPlay^{®14} • Android Auto^{™14} • Bluetooth[®] Hands-free Phone System¹⁴ • Two USB ports and two USB-C ports⁴ • SiriusXM[®] Radio with 3-month complimentary trial access¹⁴ • Streaming audio via Bluetooth[®] wireless technology¹⁴



SR/SR VC-TURBO™

INCLUDES S EQUIPMENT PLUS:

Paddle shifters with manual shift mode • Sport-tuned suspension (FWD models only) • Automatic Emergency Braking with Pedestrian Detection⁷ • Rear Automatic Braking⁸ • Rear Cross Traffic Alert⁹ • Blind Spot Warning¹⁰ • Lane Departure Warning¹¹ • High Beam Assist • Rear Sonar Sensors²⁵ • 19" Aluminum-alloy wheels • LED headlights with LED signature Daytime Running Lights • Dark chrome V-Motion grille • Body-color door handles • Black outside mirrors • Charcoal rear diffuser • Dual chrome exhaust finishers • Sport Cloth seat trim • Leather-wrapped steering wheel • Leather-wrapped shift knob

SR VC-TURBO ADDS:

- 236-hp 2.0-liter Variable Compression Turbo (VC-Turbo™) 4-cylinder engine¹⁶
- Power sliding glass moonroof
- Heated outside mirrors with LED turn signal indicators
- Driver's seat power lumbar support
- Heated front seats

SR VC-Turbo available on Front-Wheel Drive models only.



SV

INCLUDES S EQUIPMENT PLUS:

Electronic parking brake • ProPILOT Assist⁵ • Automatic Emergency Braking with Pedestrian Detection⁷ • Rear Automatic Braking⁸ • Rear Cross Traffic Alert⁹ • Blind Spot Warning¹⁰ • Intelligent Lane Intervention¹¹ • High Beam Assist • Rear Sonar Sensors²⁵ • Automatic brake hold • 17" Aluminum-alloy wheels • LED headlights with LED signature Daytime Running Lights • LED fog lights • Heated outside mirrors with LED turn signal indicators • Power sliding glass moonroof • Dual chrome exhaust finishers • Dual Zone Automatic Temperature Control • Rear passenger air conditioning vents • Passenger-side front-window one-touch auto-up/down • Remote Engine Start System with Intelligent Climate Control¹⁵ • Auto-dimming inside rearview mirror • HomeLink[®] Universal Transceiver • Driver's seat power lumbar support • Heated front seats • Heated steering wheel • Leather-wrapped steering wheel • Leather-wrapped shift knob • Piano Black interior trim



SL

INCLUDES SV EQUIPMENT PLUS:

Leather-appointed seats • Bose[®] premium audio system with nine speakers • Traffic Sign Recognition • 4-way power adjustable front-passenger's seat • Nissan Door to Door Navigation with Premium Traffic²⁶ • SiriusXM[®] Traffic and Travel Link[®] with 3-month complimentary trial access¹⁴ • NissanConnect[®] Services powered by SiriusXM[®] with complimentary trial access to 3-year Select and 6-month Premium Plus packages¹⁴ • HD Radio[®]



PLATINUM/PLATINUM VC-TURBO

INCLUDES SL EQUIPMENT PLUS:

Intelligent Around View[®] Monitor¹² • 19" Aluminum-alloy wheels • Interior accent lighting • Driver's memory seat and mirror

PLATINUM VC-TURBO ADDS:

- 236-hp 2.0-liter Variable Compression Turbo (VC-Turbo) 4-cylinder engine¹⁶

Platinum VC-Turbo available on Front-Wheel Drive models only.



S

DRIVER ASSIST PACKAGE

- Automatic Emergency Braking with Pedestrian Detection⁷
- Rear Automatic Braking⁸
- Rear Cross Traffic Alert⁹
- Blind Spot Warning¹⁰
- Lane Departure Warning¹¹
- High Beam Assist
- Rear Sonar Sensors²⁵



SR

PREMIUM PACKAGE

- Power sliding glass moonroof
- Driver's seat power lumbar support
- Heated front seats
- Heated outside mirrors with LED turn signal indicators

This package is available on 2.5-L models and standard on 2.0-L VC-Turbo models.



CHOOSE YOUR ACCESSORIES



Every Genuine Nissan Accessory is custom-fit, custom-designed and durability-tested. Each one is backed by Nissan's 3-year/36,000-mile (whichever occurs first) limited warranty (if installed by dealer at the time of purchase), and can be financed when installed by dealer at time of purchase.²⁷

A. SR Carpeted Floor Mats
Add some sporty style to every drive.



B. All-Season Trunk Area Protector
Keep it looking like new.

C. Frameless Auto-dimming Rearview Mirror with Universal Remote
This is one eye-opening feature.

D. All-Season Floor Mats
Skip the mud - and other messes.



E. Illuminated Kick Plates
Fewer scuffs and a grand entry, every time.

F. Impact Sensor
Keep your Altima alarmed, so you don't have to be.



G. Sliding Trunk Organizer Tray
Bring some order to your cargo area.

H. Interior Accent Lighting
Add a warm glow to the mood.

Additional Accessories:

- Frameless Prizm Rearview Mirror with Universal Remote
- Carpeted Floor Mats
- Carpeted Trunk Area Protector
- Hideaway Trunk Net Kit
- Portable Trunk Organizer
- Clear Rear Bumper Protector
- Black Rear Bumper Protector
- Wheel Locks
- And More



GENUINE NISSAN ACCESSORIES

TURN BRAND-NEW INTO ALL YOU

For more information and to shop online for Altima® Genuine Nissan Accessories, go to bit.ly/20altima-estore



To see Genuine Nissan Accessories in action, go to bit.ly/20altima_gna

Nissan Altima® SL shown in Scarlet Ember Tintcoat with 17" Aluminum-alloy Wheels, Splash Guards, Chrome Body Side Moldings, Exterior Ground Lighting, Chrome Rear Bumper Protector, and Rear Spoiler.

SPECIFICATIONS

Engines	S	SR	SV	SL	Platinum
2.5-liter Direct Injection Gasoline (DIG™) DOHC 16-valve 4-cylinder engine _188 ²⁸ /182 ²⁹ hp @ 6,000 rpm _180 ²⁸ /178 ²⁹ lb-ft of torque @ 3,600 rpm	■	■	■	■	■
2.0-liter Variable Compression Turbo (VC-Turbo™) DOHC 16-valve 4-cylinder engine _248/236 hp @ 5,600 rpm ¹⁶ _273/267 lb-ft of torque @ 4,000 rpm ¹⁶		□			□

Drivetrain	S	SR	SV	SL	Platinum
Front-Wheel Drive (FWD)	■	■	■	■	■
Intelligent All-Wheel Drive (AWD) ³	□	□	□	□	□
Xtronic CVT® (Continuously Variable Transmission)	■	■	■	■	■
Paddle shifters with manual shift mode		■			

Brakes	S	SR	SV	SL	Platinum
Front vented disc/solid rear disc brakes	■	■	■	■	■
Anti-lock Braking System (ABS)	■	■	■	■	■
Electronic Brake force Distribution (EBD)	■	■	■	■	■
Brake Assist ³⁰	■	■	■	■	■
Electronic parking brake	■ ²⁹	■ ²⁹	■	■	■

Suspension/Steering	S	SR	SV	SL	Platinum
Independent strut front suspension	■	■	■	■	■
Multi-link independent rear suspension	■	■	■	■	■
Twin-tube front struts/monotube rear shock absorbers	■	■	■	■	■
Sport-tuned suspension		■ ²⁸			
Front and rear stabilizer bars	■	■	■	■	■
Dual pinion electric-powered steering	■	■	■	■	■

Driver Assistance Technologies	S	SR	SV	SL	Platinum
Cruise control	■	■			
ProPILOT Assist ⁵			■	■	■
Intelligent Forward Collision Warning ¹⁹	■	■	■	■	■
Automatic Emergency Braking ⁷	■				
Automatic Emergency Braking with Pedestrian Detection ⁷	D	■	■	■	■
Lane Departure Warning ¹¹	D	■			
Intelligent Lane Intervention ¹¹		■	■	■	■
Blind Spot Warning ¹⁰	D	■	■	■	■
Rear Cross Traffic Alert ⁹	D	■	■	■	■
RearView Monitor ²⁰	■	■	■	■	■
Intelligent Around View® Monitor ¹²					■
Rear Sonar Sensors ²⁵	D	■	■	■	■
Rear Automatic Braking ⁸	D	■	■	■	■
Vehicle Dynamic Control (VDC) ³¹ with Traction Control System (TCS)	■	■	■	■	■
Active Brake Limited Slip ²⁹	■	■	■	■	■
Active Ride Control	■	■	■	■	■
Intelligent Trace Control ²¹	■	■	■	■	■
Hill start assist	■	■	■	■	■
Automatic brake hold			■	■	■
High Beam Assist	D	■	■	■	■
Traffic Sign Recognition				■	■
Intelligent Driver Alertness ²²	■	■	■	■	■

Wheels/Tires	S	SR	SV	SL	Platinum
16" Steel wheels with bolt-on wheel covers	■				
17" Aluminum-alloy wheels			■	■	
19" Aluminum-alloy wheels					■
P215/60HR16 all-season tires	■				
P215/55VR17 all-season tires			■	■	
P235/40VR19 all-season tires		■			■

Exterior Features	S	SR	SV	SL	Platinum
Intelligent Auto Headlights	■	■	■	■	■
Projector-type halogen headlights	■				
LED headlights with LED signature Daytime Running Lights		■	■	■	■
LED fog lights			■	■	■
Dual power outside mirrors	■	■	■	■	■
Heated outside mirrors with LED turn signal indicators		P	■	■	■
Power sliding glass moonroof		P	■	■	■
Dark chrome V-Motion grille		■			
Charcoal rear diffuser		■			
Dual chrome exhaust finishers		■	■	■	■

Comfort/Convenience	S	SR	SV	SL	Platinum
Air conditioning	■	■			
Dual Zone Automatic Temperature Control			■	■	■
Rear passenger air conditioning vents			■	■	■
Power windows with one-touch driver-side auto-up/down	■	■	■	■	■
Passenger-side front-window one-touch auto-up/down			■	■	■
Power door locks with auto-locking feature	■	■	■	■	■
Nissan Intelligent Key® with Push Button Ignition	■	■	■	■	■
Remote Engine Start System ¹⁵	■	■			
Remote Engine Start System with Intelligent Climate Control ¹⁵			■	■	■
Tilt and telescoping steering column	■	■	■	■	■
Variable intermittent speed-sensitive windshield wipers	■	■	■	■	■
Sun visors with illuminated vanity mirrors and extensions	■	■	■	■	■
Auto-dimming inside rearview mirror			■	■	■
HomeLink® Universal Transceiver			■	■	■
Interior accent lighting					■

Seating/Appointments	S	SR	SV	SL	Platinum
8-way power adjustable driver's seat	■	■	■	■	■
Driver's seat power lumbar support		P	■	■	■
4-way power adjustable front-passenger's seat				■	■
Driver's memory seat and mirror					■
60/40-split fold-down rear seatbacks	■	■	■	■	■
Cloth seat trim	■	■	■		
Sport Cloth seat trim		■			
Leather-appointed seats				■	■
Heated front seats		P	■	■	■
Heated steering wheel			■	■	■
Leather-wrapped steering wheel		■	■	■	■
Leather-wrapped shift knob		■	■	■	■

Seating/Appointments (continued)	S	SR	SV	SL	Platinum
Carbon-fiber look interior trim	■	■			
Piano Black interior trim			■	■	■
Wood-tone trim				■	■

Infotainment	S	SR	SV	SL	Platinum
Advanced Drive-Assist® Display ^{23, 24}	■	■	■	■	■
NissanConnect® 8" touch-screen display ¹⁴	■	■	■	■	■
Nissan Door to Door Navigation with Premium Traffic ²⁶				■	■
SiriusXM® Traffic and Travel Link® with 3-month complimentary trial access ¹⁴				■	■
NissanConnect® Services powered by SiriusXM® with complimentary trial access to 3-year Select and 6-month Premium Plus packages ¹⁴				■	■
Nissan Voice Recognition for audio and navigation ²⁶				■	■
Apple CarPlay® ¹⁴	■	■	■	■	■
Android Auto™ ¹⁴	■	■	■	■	■
Siri® Eyes Free ¹⁴	■	■	■	■	■
Hands-free Text Messaging Assistant ³²	■	■	■	■	■
Bluetooth® Hands-free Phone System ¹⁴	■	■	■	■	■
AM/FM audio system with six speakers	■	■	■		
Bose® Premium Audio System with nine speakers				■	■
Active Noise Cancellation			■ ³³		■ ³³
Steering wheel-mounted audio controls	■	■	■	■	■
Auxiliary audio input jack ⁴	■	■	■	■	■
Two USB ports and two USB-C ports ⁴	■	■	■	■	■
SiriusXM® Radio with 3-month complimentary trial access ¹⁴	■	■	■	■	■
HD Radio®				■	■
Bluetooth® streaming audio ¹⁴	■	■	■	■	■

Safety/Security	S	SR	SV	SL	Platinum
Nissan Advanced Air Bag System with dual-stage supplemental front air bags with seat-belt and occupant-classification sensors ³⁴	■	■	■	■	■
Seat-mounted side-impact supplemental air bags for front- and rear-seat outboard occupants ³⁴	■	■	■	■	■
Driver and front-passenger supplemental knee air bags ³⁴	■	■	■	■	■
Roof-mounted curtain side-impact supplemental air bags with rollover sensor for front- and rear-seat outboard occupant head protection ³⁴	■	■	■	■	■
3-point ALR/ELR seat belt system (ELR only for driver)	■	■	■	■	■
LATCH System (Lower Anchors and Tethers for CHildren)	■	■	■	■	■
Zone Body construction with front and rear crumple zones	■	■	■	■	■
Tire Pressure Monitoring System (TPMS) with individual tire pressure display and Easy-Fill Tire Alert ^{35, 36}	■	■	■	■	■
Nissan Vehicle Immobilizer System	■	■	■	■	■
Vehicle Security System	■	■	■	■	■

■ Standard □ Optional D Part of Driver Assist Package P Part of SR Premium Package

DIMENSIONS/CAPACITIES/WEIGHTS/MPG

Exterior Dimensions - Inches	
Exterior	
Wheelbase	111.2
Overall length	192.9
Overall width	72.9
Overall height	56.7 – 57.4 (depending on vehicle configuration)
Track width	62.8 – 63.6 (depending on vehicle configuration)

Aerodynamics	
Drag coefficient (Cd)	0.26

Interior Dimensions - Inches	
Interior	
Head room without moonroof (front/rear)	39.2/36.9
Head room with moonroof (front/rear)	38.0/36.7
Leg room (front/rear)	43.8/35.2
Hip room (front/rear)	54.7/54.5
Shoulder room (front/rear)	58.2/57.1

Capacities	
Seating capacity	5
Interior passenger volume without moonroof (cu. ft.)	100.8
Interior passenger volume with moonroof (cu. ft.)	98.8
Cargo capacity (cu. ft.) ³⁷	15.4
Fuel tank (gals.)	16.2 (FWD)/16.0 (AWD)

Curb Weights - Lbs.					
Base total (lbs.)	S	SR	SV	SL	Platinum
2.5-L FWD	3,208	3,287	3,268	3,291	3,330
2.5-L AWD	3,338	3,414	3,399	3,422	3,461
2.0-L VC-Turbo FWD	N/A	3,418	N/A	N/A	3,438

2020 EPA Fuel Economy Estimates ¹⁷					
City/Hwy/Combined MPG	S	SR	SV	SL	Platinum
2.5-L FWD	28/39/32	27/37/31	28/39/32	28/39/32	27/37/31
2.5-L AWD	26/36/30	25/35/29	26/36/30	26/36/30	25/35/29
2.0-L VC-Turbo FWD	N/A	25/34/29	N/A	N/A	25/34/29

NISSAN ROADSIDE ASSISTANCE

Your peace of mind is on us. For 36 months or 36,000 miles, whichever comes first, your new Nissan vehicle is covered for the following:³⁸

- Flat-tire changes
- Trip Interruption benefits
- Jump starts
- Vehicle lockouts
- Emergency fuel delivery

Follow Nissan on:



visit [NissanUSA.com/altima](https://www.nissanusa.com/altima)

PRINTED IN USA



Nissan Intelligent Mobility moves you one step ahead. In cars that feel like an extension of you, helping you see more and sense more, reacting with you, and sometimes even for you. Nissan Intelligent Mobility is about a better future - moving us to a world that's safer, more sustainable, and exciting.

¹World's first production variable compression turbo engine launched by Nissan Motor Co., Ltd. in 2018. ²Availability of features vary by vehicle model year, model, trim level, packaging, and options. ³Intelligent All-Wheel Drive cannot prevent collisions or provide enhanced traction in all conditions. Always monitor traffic and weather conditions. ⁴Driving is serious business and requires your full attention. If you have to use the connected device while driving, exercise extreme caution at all times so full attention may be given to vehicle operation. ⁵ProPILOT Assist cannot prevent collisions. It is the driver's responsibility to be in control of the vehicle at all times. Always monitor traffic conditions and keep both hands on the steering wheel. System operates only when lane markings are detected. Does not function in all weather, traffic, and road conditions. System has limited control capability and the driver may need to steer, brake, or accelerate at any time to maintain safety. See Owner's Manual for safety information. ⁶Available feature. ⁷Automatic Emergency Braking and Automatic Emergency Braking with Pedestrian Detection cannot prevent all collisions and may not provide warning or braking in all conditions. Driver should monitor traffic conditions and brake as needed to prevent collisions. See Owner's Manual for safety information. ⁸Rear Automatic Braking cannot prevent all collisions and may not provide warning or braking in all conditions. Driver should monitor traffic conditions and brake as needed to prevent collisions. See Owner's Manual for safety information. ⁹Rear Cross Traffic Alert may not detect all vehicles. See Owner's Manual for safety information. ¹⁰Blind Spot Warning cannot prevent collisions and may not detect every object or warn in all situations. Driver should always turn and look before changing lanes. See Owner's Manual for safety information. ¹¹Lane Departure Warning and Intelligent Lane Intervention operate only when lane markings are able to be detected. See Owner's Manual for safety information. ¹²Intelligent Around View[®] Monitor cannot eliminate blind spots and may not detect every object. Driver should always turn and check surroundings before driving. See Owner's Manual for safety information. ¹³Virtual composite 360[°] view. ¹⁴Available services/features may be shown. Compatible connected device may be required. Only use services/features and device when safe and legal to do so. Subject to GPS and wireless network availability and connection, and system/technology limitations. Text rates/data usage/subscription may apply. Some services/features provided by companies not within Nissan or its partners' or agents' control and may be discontinued at any time. For more information, see dealer, Owner's Manual, or NissanUSA.com/connect/important-information. ¹⁵State laws may apply. Review before using. ¹⁶VC-Turbo[™] engine horsepower and torque ratings: 248 hp and 273 lb-ft of torque ratings when using 93-octane fuel; 236 hp and 267 lb-ft of torque ratings when using 87-octane fuel. ¹⁷2020 EPA Fuel Economy Estimates 28 City/39 Highway/32 Combined for Altima[®] S, SV, SL FWD; 26 City/36 Highway/30 Combined for Altima S, SV, SL AWD; 27 City/37 Highway/31 Combined for Altima SR, Platinum FWD; 25 City/35 Highway/29 Combined for Altima SR, Platinum AWD; 25 City/34 Highway/29 Combined for Altima SR, Platinum, VC-Turbo FWD. Fuel economy estimates based on 87-octane fuel. Actual mileage may vary with driving conditions. Use for comparison only. ¹⁸Extra cost option. ¹⁹Intelligent Forward Collision Warning cannot prevent collisions. See Owner's Manual for safety information. ²⁰RearView Monitor may not detect every object and does not eliminate blind spots or warn of moving objects. See Owner's Manual for safety information. ²¹Intelligent Trace Control cannot prevent collisions or loss of control. Driver should remain in control of vehicle at all times. See Owner's Manual for safety information. ²²Intelligent Driver Alertness cannot provide a warning in every situation. See Owner's Manual for safety information. ²³Driving is serious business and requires your full attention. If you have to use the feature while driving, exercise extreme caution at all times so full attention may be given to vehicle operation. ²⁴Information displayed is dependent on how vehicle is equipped. ²⁵Sonar System may not detect every object. Driver should always check surroundings before driving. See Owner's Manual for safety information. ²⁶Never program while driving. GPS mapping may not be detailed in all areas or reflect current road status. ²⁷Genuine Nissan Accessories are covered by Nissan's Limited Warranty on Genuine Nissan Replacement Parts, Genuine NISMO[®] S-Tune Parts, and Genuine Nissan Accessories for the longer of 12 months/12,000 miles (whichever occurs first) or the remaining period under the 3-year/36,000-mile (whichever occurs first) Nissan New Vehicle Limited Warranty. Terms and conditions apply. See dealer, Warranty Information Booklet, or parts.NissanUSA.com for details. ²⁸FWD models only. ²⁹AWD models only. ³⁰Brake Assist cannot prevent all collisions and may not provide warning or braking in all conditions. Driver should monitor traffic conditions and brake as needed to prevent collisions. See Owner's Manual for safety information. ³¹Vehicle Dynamic Control cannot prevent collisions due to abrupt steering, carelessness, or dangerous driving techniques. It should remain on when driving, except when freeing the vehicle from mud or snow. See Owner's Manual for safety information. ³²Use Hands Free Text Messaging when parked in a safe location. If you must use while driving, monitor traffic conditions and keep both hands on the steering wheel to prevent collisions. Compatible device required. Message and data rates may apply. ³³VC-Turbo[™] model only. ³⁴Air bags are only a supplemental restraint system. Always wear your seat belt. Rear-facing child restraints should not be placed in the front-passenger's seat. All children 12 and under should ride in the rear seat properly secured in child restraints, booster seats, or seat belts according to their size. Air bags will only inflate in certain accidents. See Owner's Manual for safety information. ³⁵Tire Pressure Monitoring System is not a substitute for regular tire pressure checks. See Owner's Manual for safety information. ³⁶Vehicle must be on for the Easy-Fill Tire Alert to operate. ³⁷Cargo shown for display purposes only. Cargo and load capacity limited by weight and distribution. Always secure cargo. ³⁸For a period of 36 months/36,000 miles from the date the vehicle is delivered to the first retail buyer or otherwise put into use, whichever is earlier. Amazon Alexa is a trademark of Amazon.com, Inc. or its affiliates. Android[®] and Android Auto[™] are trademarks of Google LLC. Apple CarPlay[®], Apple Music[®], iTunes[®] and iPhone[®] are registered trademarks of Apple, Inc. All rights reserved. iPhone[®] or other external device not included. Bluetooth[®] is a registered trademark of Bluetooth SIG, Inc. Bose[®] is a registered trademark of The Bose Corporation. ChromaFlair[®] is a trademark of Optical Coating Laboratory, LLC. Facebook[®] is a registered trademark of Facebook, Inc. Google Assistant[™] is a trademark of Google LLC. HD Radio[®] is a registered trademark of iBiquity Digital Corporation. HomeLink[®] is a registered trademark of Gentex Corporation. Siri[®] and Siri[®] Eyes Free are registered trademarks of Apple, Inc. The Sirius[®], XM[®], and SiriusXM[®] names and all related marks and logos are trademarks of Sirius XM Radio Inc. All other trademarks are the property of their respective owners. Twitter[®] is a registered trademark of Twitter, Inc. YouTube[®] is a registered trademark of Google LLC. This brochure is intended for general descriptive and informational purposes only. It is subject to change and does not constitute an offer, representation or warranty (express or implied) by Nissan North America, Inc. Interested parties should confirm the accuracy of any information in this brochure as it relates to a vehicle directly with Nissan North America, Inc. before relying on it to make a purchase decision. Nissan North America, Inc. reserves the right to make changes, at any time, without prior notice, in prices, colors, materials, equipment, specifications, and models and to discontinue models or equipment. Due to continuous product development and other pre- and post-production factors, actual vehicle, materials and specifications may vary from this brochure. Some vehicles shown with optional equipment. See the actual vehicle for complete accuracy. Availability and delivery times for particular models or equipment may vary. Specifications, options and accessories may differ in Hawaii, U.S. territories and other countries. For additional information on availability, options or accessories, see your Nissan dealer or contact Nissan North America, Inc. At NissanUSA.com, you'll find virtual product demonstrations, a way to "build your own Nissan," a dealer locator, and more information about key Nissan support services. Or if you'd prefer, call 1-800-NISSAN-3 for answers to specific questions about Altima[®] or any other Nissan vehicle. The Nissan names, logos, product names, feature names, and slogans are trademarks owned by or licensed to Nissan Motor Co. Ltd. and/or its North American subsidiaries. Other trademarks and trade names are those of their respective owners. **Always wear your seat belt, and please drive responsibly.** ©2020 Nissan North America, Inc. 20Altima[®]. 2001108-N-6/19-80M-CG1