



Innovation  
that excites

2018  
**ARMADA**<sup>®</sup>





**TAKE ON ADVENTURE.** Turn heads with a refined, yet unmistakable, exterior design. Attention to detail and exceptional craftsmanship greet you the moment you step inside. Plush room for up to eight and versatility? Check. Available technology that connects you to your world and helps keep an eye on your surroundings? Absolutely. And out on the road, feel in command, rain or shine, even when you're hauling up to 8,500 lbs.<sup>1</sup> The 2018 Nissan Armada.<sup>®</sup> A full-size SUV that's ready to **TAKE ON TODAY.**

Nissan Armada<sup>®</sup> Platinum Reserve shown in Pearl White.

<sup>1</sup>Towing capability varies by trim level and configuration. See Nissan Towing Guide and Owner's Manual for additional information.

Intelligent Forward Collision Warning/  
Automatic Emergency Braking



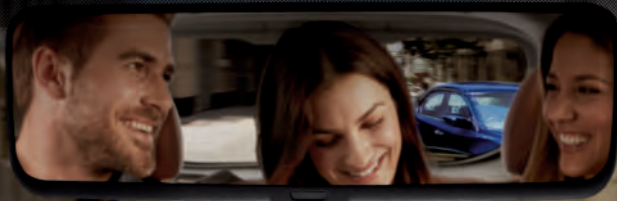
In one of the most advanced Nissan vehicles ever, you can expect confidence from an array of available Nissan Intelligent Mobility features. Whether you're keeping a safe distance from the vehicle ahead, changing lanes, or backing out of tight parking spots, these available features can help bring confidence to another level.

- Intelligent Rear View Mirror<sup>2, 4</sup>
- Intelligent Cruise Control<sup>2, 5</sup>
- Intelligent Forward Collision Warning<sup>2, 6</sup>
- Lane Departure Warning and Intelligent Lane Intervention<sup>2, 7</sup>
- Blind Spot Warning<sup>2, 8</sup>
- Intelligent Blind Spot Intervention<sup>2, 8</sup>
- Intelligent Back-up Intervention<sup>9</sup>

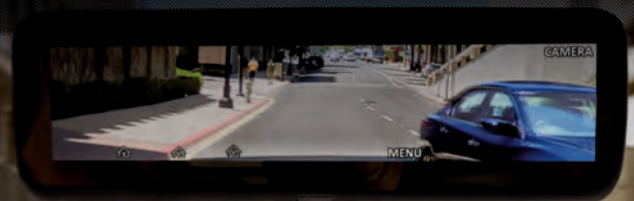
<sup>1</sup>Heated second-row outboard seats are an available feature. <sup>2</sup>Available feature. <sup>3</sup>Tri-Zone operation requires compatible auxiliary media system. See Owner's Manual for details. <sup>4</sup>Cannot completely eliminate blind spots. May not detect every object and does not warn of moving objects. Always check surroundings and turn to look behind you before moving vehicle. <sup>5</sup>Intelligent Cruise Control is not a collision avoidance system or warning device. Designed to use limited braking. Failure to apply the brakes could result in an accident. <sup>6</sup>FCW is intended to warn you before a collision occurs; it cannot prevent a collision. Speed and other limitations apply. See Owner's Manual for details. <sup>7</sup>LDW and ILI operate only when the lane markings are clearly visible. Speed limitations apply. See Owner's Manual for details. <sup>8</sup>Blind Spot Warning and Intelligent Blind Spot Intervention are not substitutes for proper lane change procedures. The systems will not prevent contact with other vehicles or accidents. They may not detect every vehicle or object around you. <sup>9</sup>IBI will not detect every object, and speed limitations apply. Always check surroundings and turn to look behind you before moving vehicle. <sup>10</sup>Towing capability varies by configuration. See Nissan Towing Guide and Owner's Manual for additional information.

## NISSAN INTELLIGENT REAR VIEW MIRROR

Have a full car? No problem. Just flip the switch on the Intelligent Rear View Mirror and you'll get a clear view behind you thanks to cameras installed at the rear of the vehicle. And when you're driving at night, you'll enjoy the enhanced, brighter view.<sup>2, 4</sup>



Intelligent Rear View Mirror OFF



Intelligent Rear View Mirror ON

## IMPRESSIVE COMFORT AND CAPACITY

Let the whole crew stretch out in absolute comfort with seating for up to eight - or seven with the available second-row captain's chairs. Add in an innovative climate control system that reaches every row, and every passenger can find their ideal zone.

- Heated Front and 2nd-row Seats<sup>1</sup>
- Seating for Up to 8
- Dual Zone Automatic Temperature Control
- Power Return 3rd-row Seats<sup>2</sup>
- Tri-Zone Entertainment System with Two Wireless Headsets<sup>2, 3</sup>

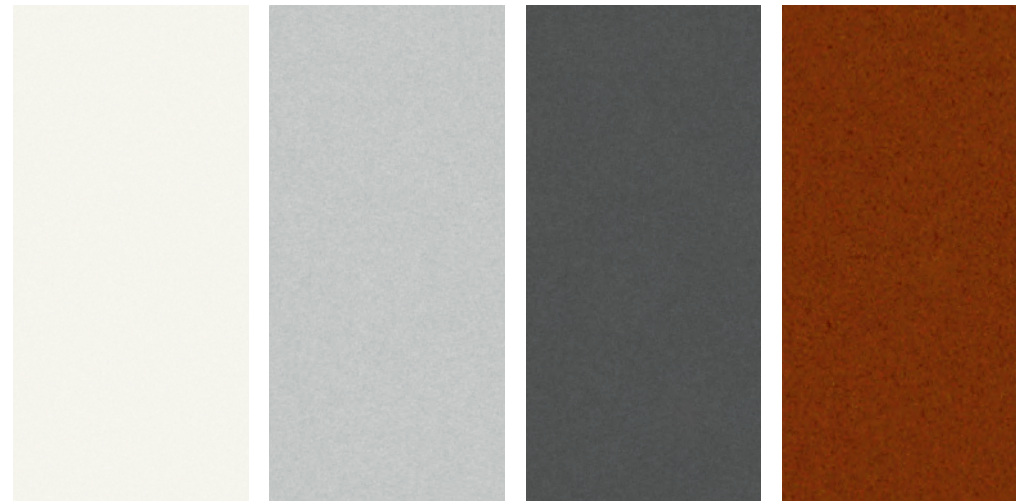


## POWERFUL V8 AND INTELLIGENT 4X4

You'll never have to leave a toy behind with a stunningly powerful Endurance® V8 engine at your command. Count on all 390 hp and 394 lb-ft of torque to make easy work out of towing up to 8,500 lbs.<sup>10</sup> And when the pavement turns to dirt, trust in Intelligent 4x4<sup>2</sup> to keep things moving.



CHOOSE YOUR COLOR



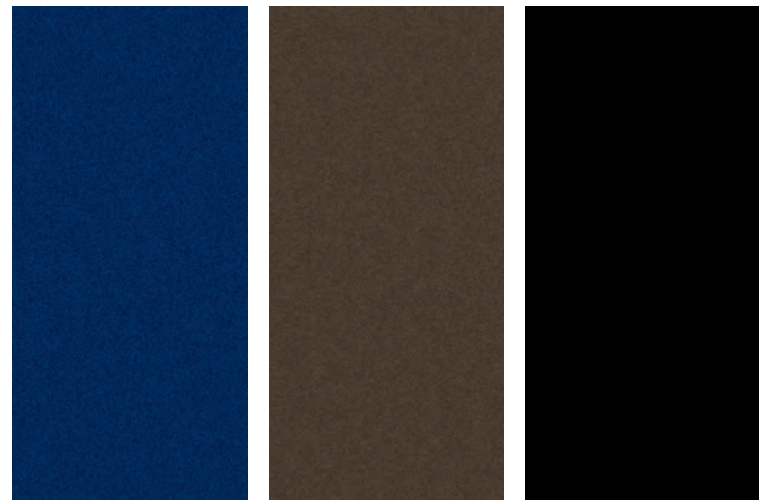
Pearl White<sup>1</sup> QAB

Brilliant Silver K23

Gun Metallic KAD

Forged Copper CAU

	SV	SL	PLATINUM	PLATINUM RESERVE <sup>2</sup>
CHARCOAL CLOTH				
ALMOND LEATHER		■	■	
CHARCOAL LEATHER		■	■	
PREMIUM BLACK/BROWN LEATHER				■



Hermosa Blue BW5

Mocha Almond CAS

Super Black KH3

	SV	SL	PLATINUM	PLATINUM RESERVE <sup>2</sup>
CHARCOAL CLOTH	■			
ALMOND LEATHER		■	■	
CHARCOAL LEATHER		■	■	
PREMIUM BLACK/BROWN LEATHER				■

■ Standard

<sup>1</sup>Extra cost option.

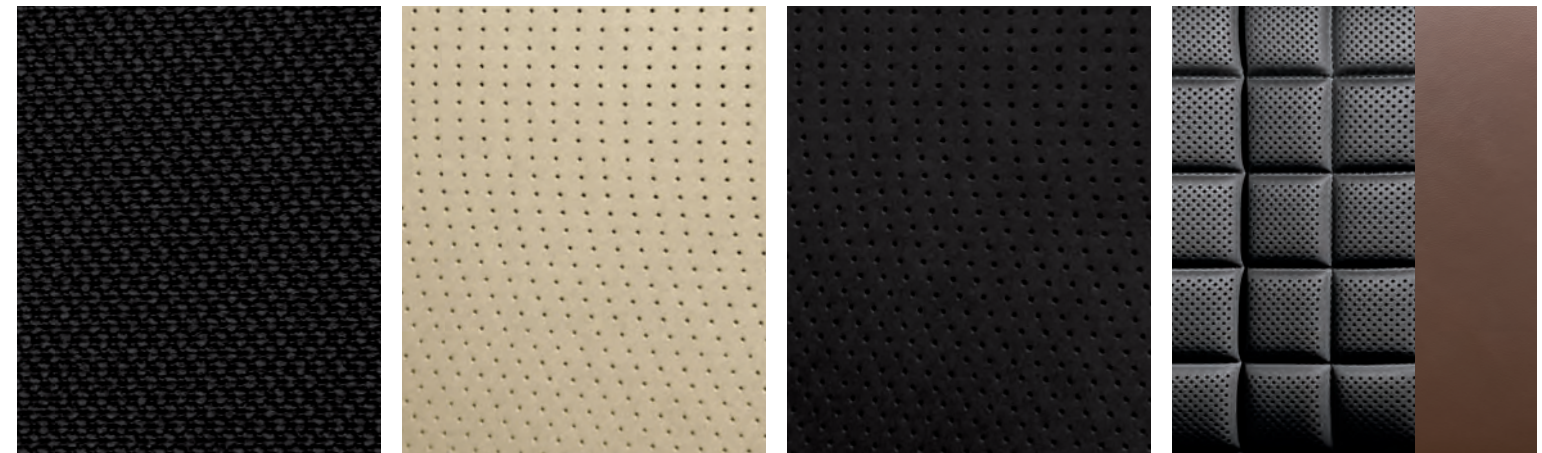
<sup>2</sup>Late availability.

Nissan has taken care to ensure that the color swatches presented here are the closest possible representations of actual vehicle colors. Swatches may vary slightly due to the printing process and whether viewed in daylight, fluorescent or incandescent light. Please see the actual colors at your local Nissan dealer.

CHOOSE YOUR INTERIOR



Nissan Armada® Platinum shown in Almond Leather.



Charcoal Cloth SV

Almond Leather SL | Platinum

Charcoal Leather SL | Platinum

Premium Black/Brown Leather Platinum Reserve<sup>2</sup>

## CHOOSE YOUR VERSION

### SV

- 390-hp Endurance® 5.6-liter V8 engine
- 7-speed automatic transmission with Tow/Haul Mode
- Standard 2WD or available Intelligent 4x4 with 2-speed transfer case
- 13.8" front and rear vented disc brakes
- 4-wheel Anti-lock Braking System (ABS)
- Electronic Brake force Distribution (EBD) with Brake Assist
- Hill start assist
- Independent double-wishbone suspension with auto-leveling rear suspension and stabilizer bars
- 18" Aluminum-alloy wheels with P265/70R18 all-season tires
- Tow hitch receiver<sup>1</sup>
- Auto-on/off headlights
- LED low-beam headlights with integrated signature
- Dark-painted roof rails and exterior trim
- Chrome grille and door handles
- Power-folding outside mirrors with turn signal indicators
- 8.0" display with multi-touch control
- Nissan Navigation System with enhanced voice recognition<sup>2</sup>
- NissanConnect® Services powered by SiriusXM<sup>®3</sup>
- SiriusXM® Traffic and Travel Link with 3-year complimentary trial access<sup>3</sup>
- Hands-free Text Messaging Assistant<sup>4</sup>
- Nissan Intelligent Key® with Push Button Ignition
- Bluetooth® Hands-free Phone System<sup>3</sup>
- Dual Zone Automatic Temperature Control
- Rear air conditioning with rear controls
- RearView Monitor<sup>5</sup>
- Front and Rear Sonar System<sup>6</sup>
- Three 12-volt DC power outlets
- Cargo-area storage under rear floor<sup>7</sup>
- Eight cargo tie-down hooks<sup>7</sup>
- 10-way power driver's seat
- 8-way power front passenger's seat
- Heated front seats
- Second-row 60/40 split fold-down bench seat
- Third-row 60/40 split fold-down bench seat
- Leather-wrapped steering wheel and shift knob
- Wood-tone trim and black carpeting
- Bose® Audio System with 13 speakers
- SiriusXM® Satellite Radio<sup>3</sup> and HD Radio®
- Four USB ports<sup>8</sup>
- Nissan Advanced Air Bag System

#### AVAILABLE PACKAGE:

- Driver Package



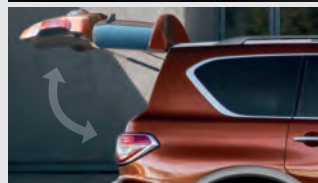
### SL

#### INCLUDES SV EQUIPMENT PLUS:

- 20" Machine-finished aluminum-alloy wheels
- P275/60R20 all-season tires
- Fog lights
- Power folding chrome outside mirrors with turn signal indicators
- Auto-dimming outside mirrors
- Heated outside mirrors with puddle lights
- Power liftgate
- Remote Engine Start System<sup>9</sup>
- Intelligent Around View® Monitor<sup>10</sup>
- Footwell lights
- Auto-dimming inside rearview mirror
- HomeLink® Universal Transceiver
- Rain-sensing wipers
- 120-volt AC power outlet
- Leather-appointed seats
- Power third-row 60/40 split fold-down bench seat
- Memory System - driver's seat, steering wheel and outside mirrors
- 7-pin wiring harness and trailer brake pre-wiring<sup>1</sup>
- Leather-appointed door trim with double stitching

#### AVAILABLE PACKAGE:

- Premium Package



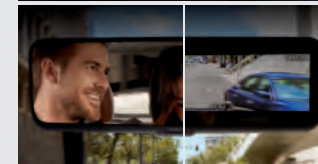
### PLATINUM

#### INCLUDES SL EQUIPMENT PLUS:

- 20" Machine-finished tinted aluminum-alloy wheels
- Power sliding moonroof with one touch open/close and tilt feature
- Climate controlled front seats (heated and cooled)
- Intelligent Cruise Control<sup>11</sup>
- Intelligent Distance Control<sup>12</sup>
- Heated leather-wrapped steering wheel
- Heated rear outboard seats
- Tri-Zone Entertainment System with dual 8.0" monitors, DVD player with remote control, two wireless headphones, and HDMI input<sup>8,13</sup>
- Intelligent Forward Collision Warning<sup>14</sup>
- Automatic Emergency Braking<sup>15</sup>
- Lane Departure Warning<sup>16</sup>
- Intelligent Lane Intervention<sup>16</sup>
- Blind Spot Warning<sup>17</sup>
- Intelligent Blind Spot Intervention<sup>17</sup>
- Intelligent Back-up Intervention<sup>18</sup>
- Intelligent Rear View Mirror<sup>5</sup>
- One additional USB port (five total)<sup>8</sup>
- Rear seat step light
- Windshield wiper de-icer

#### AVAILABLE PACKAGE:

- Captain's Chairs Package



### PLATINUM RESERVE

#### INCLUDES PLATINUM EQUIPMENT PLUS:

- Dark chrome exterior trim
- 20" Dark chrome-clad aluminum-alloy wheels
- Exclusive interior including premium two-tone leather-appointed seats with contrast stitching
- Unique open-pore wood-tone interior trim
- Platinum Reserve interior and exterior badging

#### AVAILABLE PACKAGE:

- Captain's Chairs Package

Platinum Reserve is late availability. Visit [NissanUSA.com](http://NissanUSA.com) for more information on this trim.



<sup>1</sup>Towing capability varies by trim level and configuration. See Nissan Towing Guide and Owner's Manual for additional information. <sup>2</sup>Never program while driving. GPS mapping may not be detailed in all areas or reflect current road status. <sup>3</sup>Available services/features may be shown. Compatible connected device may be required. Only use services/features and device when safe and legal to do so. Subject to GPS and wireless network availability and connection, and system/technology limitations. Text rates/data usage/subscription may apply. Some services/features provided by companies not within Nissan or its partners' or agents' control and may be discontinued at any time. For more information, see dealer, Owner's Manual, or [NissanUSA.com/connect/important-information](http://NissanUSA.com/connect/important-information). <sup>4</sup>Use the Text Messaging feature after stopping your vehicle in a safe location. If you have to use the feature while driving, exercise extreme caution at all times so full attention may be given to vehicle operation. Compatible smartphone required. Text rates and/or data usage may apply. <sup>5</sup>Parking aid/convenience feature. Cannot completely eliminate blind spots. May not detect every object and does not warn of moving objects. Always check surroundings and turn to look behind you before moving vehicle. <sup>6</sup>The Sonar System is a convenience, not a substitute for proper parking and/or backing procedures. Always check that it is safe to do so before moving vehicle. May not detect every object. <sup>7</sup>Cargo and load capacity limited by weight and distribution. Always secure all cargo. Heavy loading of the vehicle with cargo, especially on the roof, will affect the handling and stability of the vehicle. <sup>8</sup>Driving is serious business and requires your full attention. If you have to use the connected device while driving, exercise extreme caution at all times so full attention may be given to vehicle operation. External device not included. <sup>9</sup>State and local laws, regulations or ordinances may apply based on the location of the vehicle. <sup>10</sup>IAVM cannot completely eliminate blind spots and may not detect every object. IAVM operates at vehicle speeds below 5 mph. Always check surroundings and turn to look behind you before moving vehicle. <sup>11</sup>Intelligent Cruise Control is not a collision avoidance system or warning device. Designed to use limited braking. Failure to apply the brakes could result in an accident. <sup>12</sup>Intelligent Distance Control helps maintain a distance to the vehicle in front under certain conditions. Not a collision avoidance system. Failure to apply the brakes could result in an accident. <sup>13</sup>Tri-Zone operation requires compatible auxiliary media system. See Owner's Manual for details. <sup>14</sup>ICW is intended to warn you before a collision occurs; it cannot prevent a collision. Speed and other limitations apply. See Owner's Manual for details. <sup>15</sup>AEB cannot prevent accidents due to carelessness or dangerous driving techniques. It may not provide warning or braking in certain conditions. Speed and other limitations apply. See Owner's Manual for details. <sup>16</sup>LDW and ILI operate only when the lane markings are clearly visible. Speed limitations apply. See Owner's Manual for details. <sup>17</sup>Blind Spot Warning and Intelligent Blind Spot Intervention are not substitutes for proper lane change procedures. The systems will not prevent contact with other vehicles or accidents. They may not detect every vehicle or object around you. <sup>18</sup>BI will not detect every object, and speed limitations apply. Always check surroundings and turn to look behind you before moving vehicle. See Owner's Manual for details. Bluetooth® word mark and logos are owned by Bluetooth SIG, Inc., and any use of such marks by Nissan is under license. Bose® is a registered trademark of The Bose Corporation. HD Radio® is a registered trademark of iBiquity Digital Corporation. HomeLink® is a registered trademark of Genex Corporation. The Sirius®, XM®, and SiriusXM® names and all related marks and logos are trademarks of Sirius XM Radio Inc.

CHOOSE YOUR PACKAGE



**DRIVER PACKAGE** | SV

- Fog lights
- Power liftgate
- Auto-dimming interior rearview mirror
- HomeLink® Universal Transceiver
- Power third-row 60/40 split fold-down bench seat
- 7-pin wiring harness and trailer brake pre-wiring<sup>1</sup>



Intelligent Cruise Control/  
Intelligent Distance Control

Intelligent Forward Collision Warning/  
Automatic Emergency Braking

Blind Spot Warning



**CAPTAIN'S CHAIRS PACKAGE** | PLATINUM, PLATINUM RESERVE

- Second-row fold-flat captain's chairs with padded armrests and easy entry for third row
- Second-row padded center console



**PREMIUM PACKAGE** | SL

- Intelligent Cruise Control<sup>2</sup>
- Intelligent Distance Control<sup>3</sup>
- Intelligent Forward Collision Warning<sup>4</sup>
- Automatic Emergency Braking<sup>5</sup>
- Blind Spot Warning<sup>6</sup>
- Intelligent Back-up Intervention<sup>7</sup>
- Power sliding glass moonroof with one-touch open/close and tilt feature

<sup>1</sup>Towing capability varies by trim level and configuration. See Nissan Towing Guide and Owner's Manual for additional information. <sup>2</sup>Intelligent Cruise Control is not a collision avoidance system or warning device. Designed to use limited braking. Failure to apply the brakes could result in an accident. <sup>3</sup>Intelligent Distance Control helps maintain a distance to the vehicle in front under certain conditions. Not a collision avoidance system. Failure to apply the brakes could result in an accident. <sup>4</sup>IFCW is intended to warn you before a collision occurs; it cannot prevent a collision. Speed and other limitations apply. See Owner's Manual for details. <sup>5</sup>AEB cannot prevent accidents due to carelessness or dangerous driving techniques. It may not provide warning or braking in certain conditions. Speed and other

limitations apply. See Owner's Manual for details. <sup>6</sup>Blind Spot Warning is not a substitute for proper lane change procedures. The system will not prevent contact with other vehicles or accidents. It may not detect every vehicle or object around you. <sup>7</sup>IBI will not detect every object, and speed limitations apply. Always check surroundings and turn to look behind you before moving vehicle. See Owner's Manual for details. HomeLink® is a registered trademark of Gentex Corporation.

## CHOOSE YOUR ACCESSORIES



Every Genuine Nissan Accessory is custom-fit, custom-designed and durability-tested. Each one is also backed by Nissan's 3-year/36,000-mile (whichever occurs first) limited warranty (if installed by dealer at the time of purchase).<sup>1</sup> Ask your dealer whether a specific Genuine Nissan Accessory may be financed when installed by the dealer at the time of purchase.

### A. Illuminated Kick Plates

For a grand entrance every time.

### B. Hitch Ball Mount, Class III<sup>2</sup>

We'll hook you up.

### C. Wireless Smartphone Charger

Power up without plugging in.

### D. Nissan WiFi & Apps<sup>3</sup>

Connected passengers are happy passengers.

### E. All-season Floor Mats

Neither rain, sleet, nor snow will mess your ride.

### F. Interior Accent Lighting

Starts every trip with a warm glow.

### G. Cargo Area Protector<sup>4</sup>

Preserve and protect your cargo – and your Armada.

### H. Roof Rail Crossbars<sup>4</sup>

The easy solution to bringing more.

#### Additional Accessories:

- Moonroof Wind Deflector
- Side Window Deflectors
- Chrome Side Mirror Covers
- Chrome Body Side Moldings
- Welcome Lighting
- Weight Distributing Hitch Ball Mount, Class IV<sup>2</sup>
- And More

<sup>1</sup>Genuine Nissan Accessories are covered by Nissan's Limited Warranty on Genuine Nissan Replacement Parts, Genuine NISMO® S-Tune Parts, and Genuine Nissan Accessories for the longer of 12 months/12,000 miles (whichever occurs first) or the remaining period under the 3-year/36,000-mile (whichever occurs first) Nissan New Vehicle Limited Warranty. Terms and conditions apply. See Warranty Information Booklet for details. <sup>2</sup>Towing capability varies by configuration. See Nissan Towing Guide and Owner's Manual for additional information. <sup>3</sup>Available services/features may be shown. Compatible connected device may be required. Only use services/features and device when safe and legal to do so. Subject to GPS and wireless network availability and connection, and system/technology limitations. Text rates/data usage/subscription may apply. Some services/features provided by companies not within Nissan or its partners' or agents' control and may be discontinued at any time. For more information, see dealer, Owner's Manual, or [NissanUSA.com/connect/important-information](http://NissanUSA.com/connect/important-information). <sup>4</sup>Cargo and load capacity limited by weight and distribution. Always secure all cargo. Heavy loading of the vehicle with cargo, especially on the roof, will affect the handling and stability of the vehicle.

## GENUINE NISSAN ACCESSORIES

# TURN BRAND-NEW INTO ALL YOU

For more information and to shop online for Armada® Genuine Nissan Accessories, go to [bit.ly/18armada-estore](http://bit.ly/18armada-estore)



**Nissan Armada® Platinum** shown in Pearl White with Chrome Side Moldings, Chrome Side Mirror Covers (standard on Platinum), Welcome Lighting, Fog Lights, Roof Rail Crossbars, Side Window Deflectors, and Moonroof Wind Deflector.

## SPECIFICATIONS

Engine	SV	SL	Platinum	Platinum Reserve
Endurance* 5.6-liter DOHC 32-valve V8 engine	■	■	■	■
— 390 hp @ 5,800 rpm				
— 394 lb-ft of torque @ 4,000 rpm				
Variable Valve Event and Lift (VVEL) technology	■	■	■	■
Nissan Direct Ignition System	■	■	■	■
Iridium-tipped spark plugs	■	■	■	■
Electronic drive-by-wire throttle	■	■	■	■

Drivetrain	SV	SL	Platinum	Platinum Reserve
Intelligent 4x4 with 2-speed transfer case (4WD models)	□	□	□	□
7-speed automatic transmission with Tow/Haul Mode	■	■	■	■
Lower final drive ratio (2.937:1)	■	■	■	■
Hill start assist	■	■	■	■

Brakes	SV	SL	Platinum	Platinum Reserve
13.8" front and rear vented disc brakes	■	■	■	■
Electronic Brake force Distribution (EBD)	■	■	■	■
Brake Assist	■	■	■	■

Suspension/Steering	SV	SL	Platinum	Platinum Reserve
Independent double-wishbone front/rear suspension	■	■	■	■
Auto-leveling rear suspension	■	■	■	■
Front and rear stabilizer bars	■	■	■	■
Engine-speed-sensitive power steering	■	■	■	■

Wheels/Tires	SV	SL	Platinum	Platinum Reserve
18" x 8.0" aluminum-alloy wheels	■			
20" x 8.0" machine-finished aluminum-alloy wheels		■		
20" x 8.0" machine-finished tinted aluminum-alloy wheels			■	
20" x 8.0" dark chrome-clad aluminum-alloy wheels				■
P265/70R18 all-season tires	■			
P275/60R20 all-season tires		■	■	■
Full-size spare tire	■	■	■	■

Exterior Features	SV	SL	Platinum	Platinum Reserve
Auto on/off headlights	■	■	■	■
LED low-beam headlights with integrated signature	■	■	■	■
Fog lights	D	■	■	■
Dark-painted exterior trim	■	■	■	■
Chrome grille and door handles	■	■	■	
Dark chrome grille, door handles and mirrors				■
Power folding outside mirrors with turn signal indicators	■	■	■	■
Heated outside mirrors with puddle lights		■	■	■
Auto-dimming outside mirrors		■	■	■
Power sliding glass moonroof with one-touch open/close and tilt feature		P	■	■
Front and Rear Sonar System	■	■	■	■
Power liftgate	D	■	■	■
Tow hitch receiver	■	■	■	■
Seven-pin wiring harness	D	■	■	■
Trailer brake pre-wiring	D	■	■	■

Comfort/Convenience	SV	SL	Platinum	Platinum Reserve
Nissan Navigation System <sup>1</sup>	■	■	■	■
NissanConnect Services powered by SiriusXM <sup>®2</sup>	■	■	■	■
SiriusXM <sup>®</sup> Traffic and Travel Link with 3-year complimentary trial access <sup>2</sup>	■	■	■	■
8.0" display with multi-touch control and enhanced Voice Recognition	■	■	■	■
Hands-free text messaging assistant	■	■	■	■
Nissan Intelligent Key <sup>®</sup> with Push Button Ignition	■	■	■	■
Remote Engine Start System		■	■	■
Bluetooth <sup>®</sup> Hands-free Phone System <sup>2</sup>	■	■	■	■
Intelligent Rear View Mirror			■	■
Dual Zone Automatic Temperature Control	■	■	■	■
Rear air conditioning with rear controls	■	■	■	■
Rear seat heater ducts under front seats	■	■	■	■
In-cabin microfilter	■	■	■	■
HomeLink <sup>®</sup> Universal Transceiver	D	■	■	■
RearView Monitor	■			
Intelligent Around View <sup>®</sup> Monitor		■	■	■
Cruise control with illuminated steering wheel-mounted controls	■	■	■	■
Intelligent Cruise Control		P	■	■
Intelligent Distance Control		P	■	■
Variable intermittent windshield wipers	■	■	■	■
Rain-sensing windshield wipers		■	■	■
Intermittent rear window wiper	■	■	■	■
Windshield wiper de-icer			■	■
Footwell lights		■	■	■
Auto-dimming rearview mirror	D	■	■	■
Dual front map lights	■	■	■	■
Dual second- and third-row reading lights	■	■	■	■
Three 12-volt DC power outlets	■	■	■	■
120-volt AC power outlet	■	■	■	■
Transmission temperature gauge	■	■	■	■
Sun visors with illuminated vanity mirrors and extension	■	■	■	■
Second-row padded center console with wood-tone trim			C	C
Cup holder lid for second-row center console			C	C
Driver and front passenger seatback pockets	■	■	■	■
Four cup holders and eight bottle holders	■	■	■	■
Cargo-area storage under floor	■	■	■	■
Eight cargo tie-down hooks	■	■	■	■

Seating/Appointments	SV	SL	Platinum	Platinum Reserve
10-way power driver's and 8-way power front passenger's seat including 2-way power lumbar support	■	■	■	■
Memory System – driver's seat, steering wheel, and outside mirrors		■	■	■
Heated front seats	■	■		
Climate-controlled seats (heated and cooled)			■	■
Heated second-row seats			■	■
Second-row 60/40 split fold-down bench seat with tip-up easy entry for third row	■	■	■	■
Second-row fold-down captain's chairs with easy entry for third row			C	C
Third-row 60/40 split fold-down bench seat	■			

Seating/Appointments (continued)	SV	SL	Platinum	Platinum Reserve
Power third-row 60/40 split fold-down bench seat	D	■	■	■
Cloth seat trim	■			
Leather-appointed seats		■	■	
Premium two-tone leather-appointed seats				■
Leather-wrapped steering wheel	■	■		
Heated leather-wrapped steering wheel			■	■
Leather-wrapped shift knob	■	■	■	■
Leather-appointed door trim with double stitching		■	■	■
Wood-tone trim	■	■	■	
Open-pore wood-tone trim				■
Platinum Reserve embossed badging				■

Audio/Entertainment	SV	SL	Platinum	Platinum Reserve
Bose <sup>®</sup> Audio System with 13 speakers including subwoofer	■	■	■	■
SiriusXM <sup>®</sup> Satellite Radio <sup>2</sup> with 3-month complimentary trial access	■	■	■	■
HD Radio <sup>®</sup>	■	■	■	■
Tri-Zone Entertainment System with dual 8.0" monitors, DVD player with remote control, two wireless headphones, and HDMI input			■	■
MP3/WMA CD playback capability	■	■	■	■
Four USB ports	■	■		
Five USB ports			■	■
Streaming audio via Bluetooth <sup>®</sup> wireless technology <sup>2</sup>	■	■	■	■

Safety/Security	SV	SL	Platinum	Platinum Reserve
Nissan Advanced Air Bag System with dual-stage supplemental front air bags with seat belt and occupant-classification sensors	■	■	■	■
Driver and front-passenger seat-mounted side-impact supplemental air bags	■	■	■	■
Roof-mounted curtain side-impact supplemental air bags for outboard occupant head protection for all three rows	■	■	■	■
Vehicle Dynamic Control (VDC) with Traction Control System (TCS)	■	■	■	■
Lane Departure Warning with Intelligent Lane Intervention			■	■
Intelligent Forward Collision Warning		P	■	■
Automatic Emergency Braking		P	■	■
Intelligent Back-up Intervention		P	■	■
Blind Spot Warning		P	■	■
Intelligent Blind Spot Intervention			■	■
Active Brake Limited Slip (ABLS)	■	■	■	■
LATCH System (Lower Anchors and Tethers for Children)	■	■	■	■
Tire Pressure Monitoring System (TPMS)	■	■	■	■

## DIMENSIONS/CAPACITIES

Exterior Dimensions – Inches	
Wheelbase	121.1
Overall length/width/height	208.9/79.9/75.8
Track width (front/rear)	67.5/67.9

Interior Dimensions – Inches	
Head room without moonroof (front)	40.9 (SV, SL)
Head room with moonroof (front)	39.8 (SL, Platinum)
Head room (2nd row/3rd row)	40.0/36.4
Leg room (front/2nd row/3rd row)	41.9/41.0/28.4
Hip room (front row/2nd row/ 3rd row)	59.2/58.4/48.8
Shoulder room (front row/2nd row/3rd row)	63.8/63.4/60.5

Capacities	
Seating capacity with 2nd-row bench seat	8
Seating capacity with Captain's Chair Package	7
Fuel tank (gals.)	26
Maximum towing capacity (lbs.)	8,500
Tongue weight capacity (lbs.)	850

2018 EPA Fuel Economy Estimates	
<b>City/Highway MPG</b>	
4x2	14/19
4x4	13/18
*Actual mileage may vary with driving conditions – use for comparison only.	

<sup>1</sup>Never program while driving. GPS mapping may not be detailed in all areas or reflect current road status. <sup>2</sup>Available services/features may be shown. Compatible connected device may be required. Only use services/features and device when safe and legal to do so. Subject to GPS and wireless network availability and connection, and system/technology limitations. Text rates/data usage/subscription may apply. Some services/features provided by companies not within Nissan or its partners' or agents' control and may be discontinued at any time. For more information, see dealer, Owner's Manual, or [NissanUSA.com/connect/important-information](http://NissanUSA.com/connect/important-information). External device not included. Bluetooth<sup>®</sup> word mark and logos are owned by Bluetooth SIG, Inc., and any use of such marks by Nissan is under license. Bose<sup>®</sup> is a registered trademark of The Bose Corporation. HD Radio<sup>®</sup> is a registered trademark of iBiquity Digital Corporation. HomeLink<sup>®</sup> is a registered trademark of Gentex Corporation. The Sirius<sup>®</sup>, XM<sup>®</sup>, and SiriusXM<sup>®</sup> names and all related marks and logos are trademarks of Sirius XM Radio Inc. This brochure is intended for general descriptive and informational purposes only. It is subject to change and does not constitute an offer, representation or warranty (express or implied) by Nissan North America, Inc. Interested parties should confirm the accuracy of any information in this brochure as it relates to a vehicle directly with Nissan North America, Inc., before relying on it to make a purchase decision. Nissan North America, Inc., reserves the right to make changes, at any time, without prior notice, in prices, colors, materials, equipment, specifications, and models and to discontinue models or equipment. Due to continuous product development and other pre- and post-production factors, actual vehicle, materials and specifications may vary from this brochure. Some vehicles shown with optional equipment. See the actual vehicle for complete accuracy. Availability and delivery times for particular models or equipment may vary. Specifications, options and accessories may differ in Hawaii, U.S. territories and other countries. For additional information on availability, options or accessories, see your Nissan dealer or contact Nissan North America, Inc. At [NissanUSA.com](http://NissanUSA.com), you'll find virtual product demonstrations, a way to "build your own Nissan," a dealer locator, and more information about key Nissan support services. Or if you'd prefer, call **1-800-NISSAN-3** for answers to specific questions about Armada<sup>®</sup> or any other Nissan vehicle. The Nissan names, logos, product names, feature names, and slogans are trademarks owned by or licensed to Nissan Motor Co. Ltd. and/or its North American subsidiaries. **Always wear your seat belt, and please drive responsibly.** ©2017 Nissan North America, Inc. '18 Armada 1820706-N-9/17-60K-CGI

## NISSAN INTELLIGENT MOBILITY™

Nissan Intelligent Mobility guides everything we do. We're using new technologies to transform cars from mere driving machines into assistants. Together the journey is more confident, connected, and exciting. Whether it's cars that assist in the driving task, or highways that charge your EV as you go along, it's all in the very near future. And it's a future already taking shape in the Nissan you drive today.

### SEE ARMADA® COME TO LIFE

Go to **NissanUSA.com** and find an interactive brochure for Armada® and every Nissan in the lineup. Available on desktop or smartphone, it's the full product story - including demos, videos, and complete info on trims, colors, and accessories.

Or download the Interactive Brochure Hub app on your tablet.  
**Free on the App Store® and Google Play.™**



### NISSAN ROADSIDE ASSISTANCE

**Your peace of mind is on us. For 36 months or 36,000 miles, whichever comes first, your new Nissan is covered for the following:¹**

- Flat-tire changes
- Trip Interruption benefits
- Jump starts
- Vehicle lockouts
- Emergency fuel delivery

Follow Nissan on:



visit **NissanUSA.com/armada**

¹Available services/features may be shown. Compatible connected device may be required. Only use services/features and device when safe and legal to do so. Subject to GPS and wireless network availability and connection, and system/technology limitations. Text rates/data usage/subscription may apply. Some services/features provided by companies not within Nissan or its partners' or agents' control and may be discontinued at any time. For more information, see dealer, Owner's Manual, or **NissanUSA.com/connect/important-information**. The App Store® is a registered trademark of Apple, Inc. All rights reserved. Facebook® is a registered trademark of Facebook, Inc. Google Play™ is a trademark of Google, Inc. YouTube® is a registered trademark of Google, Inc. Twitter® is a registered trademark of Twitter, Inc.

PRINTED IN POLAND



**Innovation  
that excites**