

ARMADA®

2021



Armada makes every day exciting

Premium looks and room for up to eight meets capability to expand what your next adventure could be. The chiseled exterior gives way to first-class interior luxury that will change what you come to expect from an SUV. And with 18 standard driver assistance features, you can feel confident whether cruising the interstate or navigating a rock-laden trail.¹



Nissan Armada® Platinum shown in Coulis Red Pearl.

Treat yourself to upgraded style and tech

This is where you want to be. Surrounded by quilted leather appointments, wood-tone trim, and brushed metal accents. The redesigned center dash brings a new, larger 12.3" color touch-screen display that puts what's important to you within reach.

Wireless Apple CarPlay® integration People to see? Places to be? Just ask Siri®. Equipped with Siri® voice control, Apple CarPlay® brings your contacts, favorite messaging apps, Apple Music® playlists, Apple Maps, and more on board to your Armada. No need to plug in, just bring your compatible iPhone®.^{2, 3}



Android Auto™ With Android Auto, you can keep your eyes on the road and hands on the wheel while using your voice to help you with your day. Ask Google to play your favorite song, navigate home, or respond to a text hands-free. Just say, "Hey Google" or long-press the voice control button on your steering wheel.^{2, 3, 4}



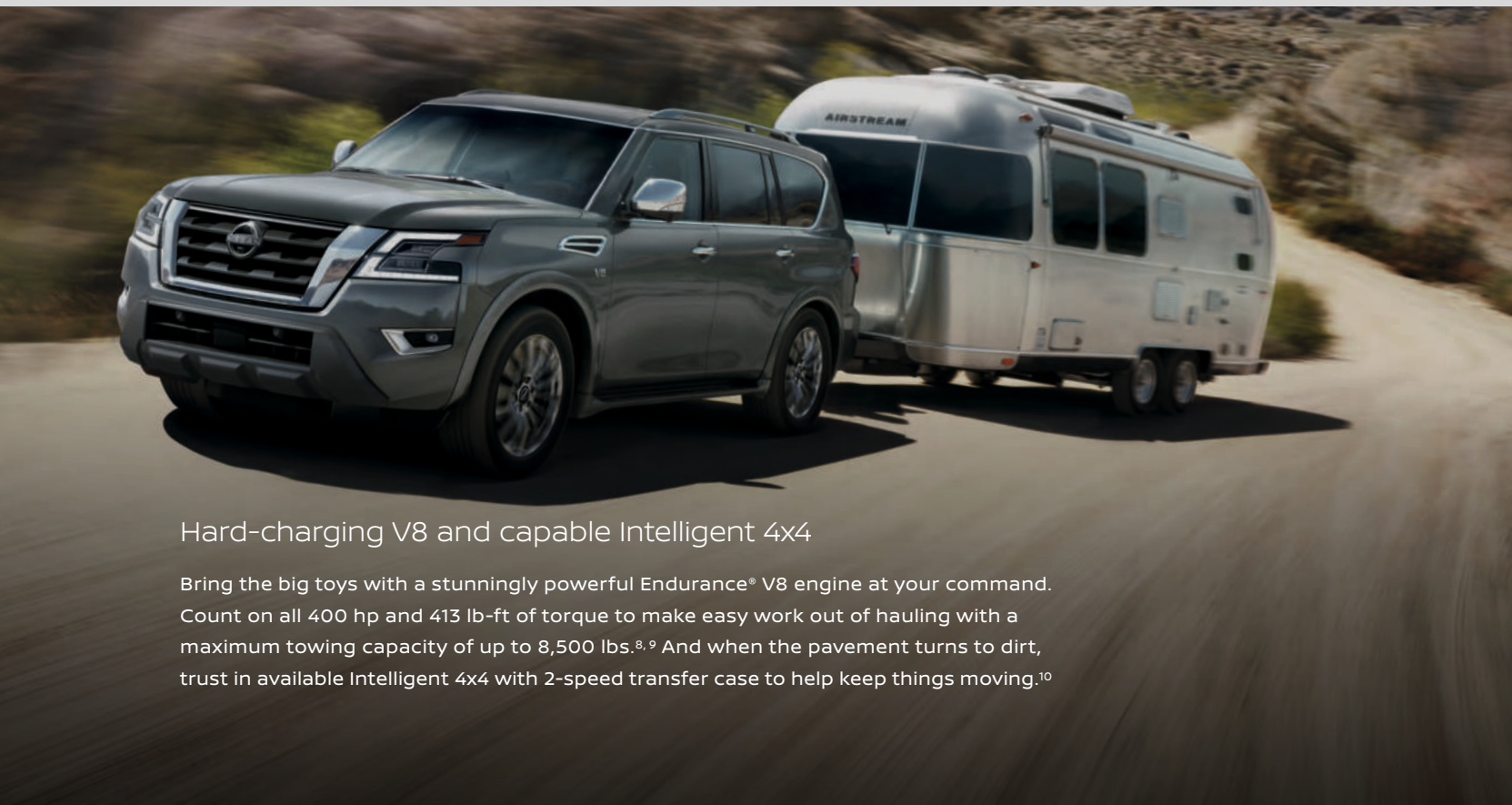
Wireless Charger Keep it 100%. Armada's available wireless charging lets you charge your compatible gadgets without the need for cords.³



Custom comfort for all

Let the whole crew enjoy exceptional comfort with seating for eight – or seven with the available second-row captain’s chairs. Add in an innovative climate control system that reaches every row, and every passenger can find their ideal zone.

- Heated front and 2nd-row seats⁵
- Seating for up to 8
- Rear air conditioning with rear controls
- Power recline and fold 3rd-row seats^{5,6}
- Tri-Zone Entertainment system with Two Wireless Headphones^{5,7}



Hard-charging V8 and capable Intelligent 4x4

Bring the big toys with a stunningly powerful Endurance® V8 engine at your command. Count on all 400 hp and 413 lb-ft of torque to make easy work out of hauling with a maximum towing capacity of up to 8,500 lbs.^{8,9} And when the pavement turns to dirt, trust in available Intelligent 4x4 with 2-speed transfer case to help keep things moving.¹⁰



Standard Safety Shield® 360 and driver assist technologies

In one of the most advanced Nissan vehicles ever, you can expect confidence from an array of safety and driver assist features.^{1, 11}

Safety Shield 360 includes:

- Automatic Emergency Braking with Pedestrian Detection¹²
- Rear Automatic Braking¹³
- Rear Cross Traffic Alert¹⁴
- Blind Spot Warning¹⁵
- Lane Departure Warning¹⁶
- High Beam Assist

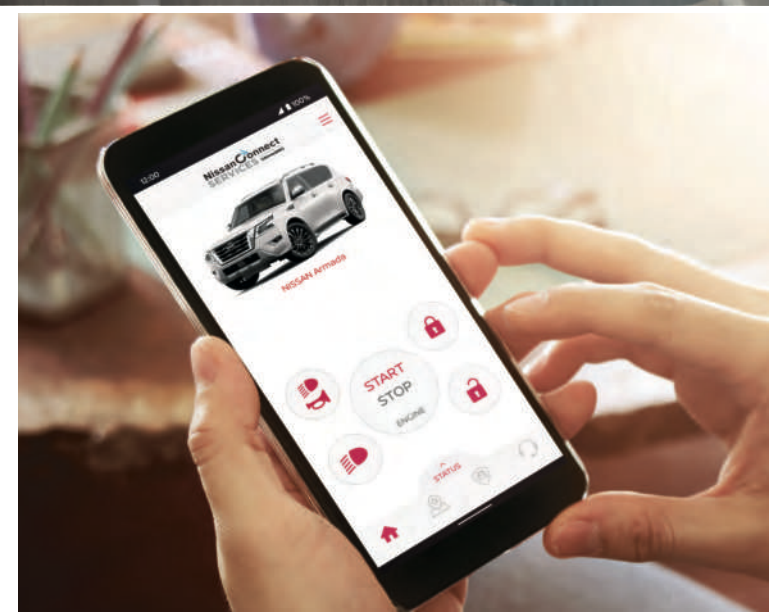
Armada also comes standard with:

- Intelligent Cruise Control¹⁷
- Intelligent Blind Spot Intervention¹⁵
- Intelligent Lane Intervention¹⁶



Remote start from your phone

With NissanConnect® Services, you can remotely start your vehicle from nearly anywhere your compatible smartphone works. Need to unlock your vehicle for a friend? Just tap the unlock button on your phone. You can even find your parked vehicle’s location. Now that’s cool.^{2, 18}



CHOOSE YOUR COLOR



Aspen White TriCoat¹⁹

Brilliant Silver Metallic

Gun Metallic

Coulis Red Pearl

	SV	SL	MIDNIGHT EDITION	PLATINUM
ALMOND LEATHERETTE	<input checked="" type="checkbox"/>			
CHARCOAL LEATHERETTE	<input checked="" type="checkbox"/>			
ALMOND LEATHER ²⁰		<input checked="" type="checkbox"/>		
CHARCOAL LEATHER ²⁰		<input checked="" type="checkbox"/>		
BLACK LEATHER ²⁰			<input checked="" type="checkbox"/>	
QUILTED ALMOND LEATHER ²⁰				<input checked="" type="checkbox"/>
QUILTED BLACK LEATHER ²⁰				<input checked="" type="checkbox"/>
QUILTED ESPRESSO BROWN LEATHER ²⁰				<input checked="" type="checkbox"/>

	SV	SL	MIDNIGHT EDITION	PLATINUM
ALMOND LEATHERETTE	<input checked="" type="checkbox"/>			
CHARCOAL LEATHERETTE	<input checked="" type="checkbox"/>			
ALMOND LEATHER ²⁰		<input checked="" type="checkbox"/>		
CHARCOAL LEATHER ²⁰		<input checked="" type="checkbox"/>		
BLACK LEATHER ²⁰			<input checked="" type="checkbox"/>	
QUILTED ALMOND LEATHER ²⁰				<input checked="" type="checkbox"/>
QUILTED BLACK LEATHER ²⁰				<input checked="" type="checkbox"/>
QUILTED ESPRESSO BROWN LEATHER ²⁰				<input checked="" type="checkbox"/>

	SV	SL	MIDNIGHT EDITION	PLATINUM
ALMOND LEATHERETTE				
CHARCOAL LEATHERETTE				
ALMOND LEATHER ²⁰		<input checked="" type="checkbox"/>		
CHARCOAL LEATHER ²⁰		<input checked="" type="checkbox"/>		
BLACK LEATHER ²⁰			<input checked="" type="checkbox"/>	
QUILTED ALMOND LEATHER ²⁰				<input checked="" type="checkbox"/>
QUILTED BLACK LEATHER ²⁰				<input checked="" type="checkbox"/>
QUILTED ESPRESSO BROWN LEATHER ²⁰				<input checked="" type="checkbox"/>

	SV	SL	MIDNIGHT EDITION	PLATINUM
ALMOND LEATHERETTE				
CHARCOAL LEATHERETTE				
ALMOND LEATHER ²⁰				
CHARCOAL LEATHER ²⁰				
BLACK LEATHER ²⁰				
QUILTED ALMOND LEATHER ²⁰				<input checked="" type="checkbox"/>
QUILTED BLACK LEATHER ²⁰				<input checked="" type="checkbox"/>
QUILTED ESPRESSO BROWN LEATHER ²⁰				<input checked="" type="checkbox"/>



Hermosa Blue Pearl



Mocha Almond Pearl

Super Black

	SV	SL	MIDNIGHT EDITION	PLATINUM
ALMOND LEATHERETTE				
CHARCOAL LEATHERETTE				
ALMOND LEATHER ²⁰		<input checked="" type="checkbox"/>		
CHARCOAL LEATHER ²⁰		<input checked="" type="checkbox"/>		
BLACK LEATHER ²⁰				
QUILTED ALMOND LEATHER ²⁰				<input checked="" type="checkbox"/>
QUILTED BLACK LEATHER ²⁰				<input checked="" type="checkbox"/>
QUILTED ESPRESSO BROWN LEATHER ²⁰				<input checked="" type="checkbox"/>

	SV	SL	MIDNIGHT EDITION	PLATINUM
ALMOND LEATHERETTE				
CHARCOAL LEATHERETTE				
ALMOND LEATHER ²⁰		<input checked="" type="checkbox"/>		
CHARCOAL LEATHER ²⁰		<input checked="" type="checkbox"/>		
BLACK LEATHER ²⁰				
QUILTED ALMOND LEATHER ²⁰				<input checked="" type="checkbox"/>
QUILTED BLACK LEATHER ²⁰				<input checked="" type="checkbox"/>
QUILTED ESPRESSO BROWN LEATHER ²⁰				<input checked="" type="checkbox"/>

	SV	SL	MIDNIGHT EDITION	PLATINUM
ALMOND LEATHERETTE	<input checked="" type="checkbox"/>			
CHARCOAL LEATHERETTE	<input checked="" type="checkbox"/>			
ALMOND LEATHER ²⁰		<input checked="" type="checkbox"/>		
CHARCOAL LEATHER ²⁰		<input checked="" type="checkbox"/>		
BLACK LEATHER ²⁰			<input checked="" type="checkbox"/>	
QUILTED ALMOND LEATHER ²⁰				<input checked="" type="checkbox"/>
QUILTED BLACK LEATHER ²⁰				<input checked="" type="checkbox"/>
QUILTED ESPRESSO BROWN LEATHER ²⁰				<input checked="" type="checkbox"/>

	SV	SL	MIDNIGHT EDITION	PLATINUM
ALMOND LEATHERETTE				
CHARCOAL LEATHERETTE				
ALMOND LEATHER ²⁰		<input checked="" type="checkbox"/>		
CHARCOAL LEATHER ²⁰		<input checked="" type="checkbox"/>		
BLACK LEATHER ²⁰			<input checked="" type="checkbox"/>	
QUILTED ALMOND LEATHER ²⁰				<input checked="" type="checkbox"/>
QUILTED BLACK LEATHER ²⁰				<input checked="" type="checkbox"/>
QUILTED ESPRESSO BROWN LEATHER ²⁰				<input checked="" type="checkbox"/>

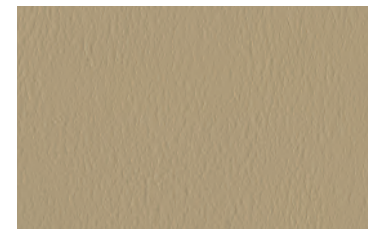
■ Standard

Nissan has taken care to ensure that the color swatches presented here are the closest possible representations of actual vehicle colors. Swatches may vary slightly due to the printing process and whether viewed in daylight, fluorescent or incandescent light. Please see the actual colors at your dealer.

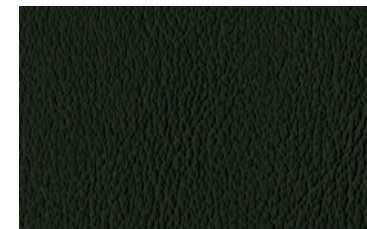
CHOOSE YOUR INTERIOR



Nissan Armada® Platinum shown in Quilted Almond Leather.²⁰



Almond Leatherette
SV



Charcoal Leatherette
SV



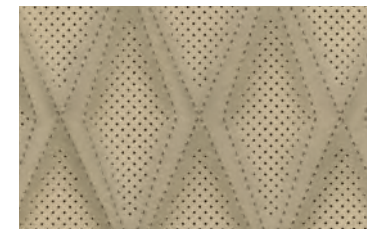
Almond Leather²⁰
SL



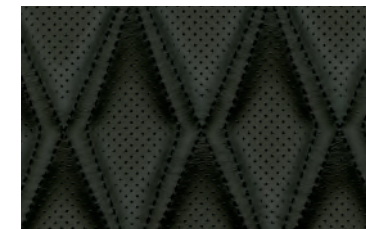
Charcoal Leather²⁰
SL



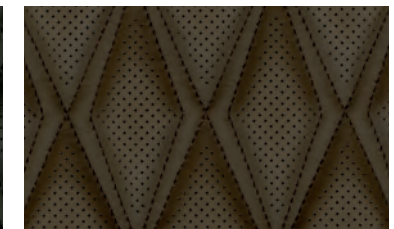
Black Leather²⁰
Midnight Edition



Quilted Almond Leather²⁰
Platinum



Quilted Black Leather²⁰
Platinum



Quilted Espresso Brown Leather²⁰
Platinum

CHOOSE YOUR TRIM LEVEL

SV

- 400-hp Endurance® 5.6-liter V8 engine⁸
 - 7-speed automatic transmission
 - Available Intelligent 4x4 with 2-speed transfer case¹⁰
 - 13.8" front and rear vented disc brakes
 - Anti-lock Braking System (ABS)
 - Electronic Brake force Distribution (EBD) with Brake Assist²¹
 - Independent double-wishbone suspension with auto-leveling rear suspension and stabilizer bars
 - Intelligent Cruise Control¹⁷
 - Intelligent Driver Alertness²²
 - Intelligent Lane Intervention¹⁶
 - Intelligent Forward Collision Warning²³
 - Automatic Emergency Braking with Pedestrian Detection¹²
 - Intelligent Blind Spot Intervention¹⁵
 - Front and Rear Sonar²⁴
 - Rear Automatic Braking¹³
 - High Beam Assist
 - Hill start assist
 - Trailer brake controller⁹
 - 18" Aluminum-alloy wheels
 - LED low/high-beam headlights with integrated signature
 - LED Daytime Running Lights
 - Power heated and folding body-color outside mirrors with LED turn signal indicators
 - Acoustic windshield and front side windows
 - Dark gray roof rails
 - Class IV tow hitch receiver with 7-pin wiring harness⁹
 - Dual Zone Automatic Temperature Control
- Rear air conditioning with rear controls
 - In-cabin microfilter
 - Nissan Intelligent Key® with Push Button Ignition
 - Power tilt and telescoping steering column
 - Intermittent rear window wiper
 - Three 12-volt DC power outlets³
 - Cargo-area storage under rear floor²⁵
 - Eight cargo tie-down hooks²⁵
 - 10-way power driver's and front-passenger's seats
 - Heated front seats
 - Second-row 60/40-split fold-down bench seat
 - Third-row 60/40-split fold-down bench seat
 - Leatherette Seats
 - Leather-wrapped steering wheel and shift knob
 - 7" Advanced Drive-Assist® Display^{26, 27}
 - NissanConnect® 12.3" color touch-screen display²
 - Nissan Door to Door Navigation²⁸
 - Wireless Apple CarPlay® integration²
 - Android Auto™²
 - NissanConnect® Services powered by SiriusXM® with trial access to 5-year Select and Plus, and 6-month Premium packages²
 - NissanConnect® with Wi-Fi Hotspot²
 - SiriusXM® Traffic and Travel Link with 3-month complimentary trial access²
 - Bluetooth® Hands-free Phone System²
 - AM/FM Audio System with six speakers
 - SiriusXM® Radio with 3-month complimentary trial access²
 - HD Radio® Technology
 - Two USB-A and two USB-C connection ports³
 - Wireless charger³
 - Streaming Audio via Bluetooth®²

AVAILABLE PACKAGE:

- Appearance Package



SL INCLUDES SV EQUIPMENT PLUS:

- Intelligent Around View® Monitor²⁹
 - Trailer Sway Control⁹
 - 20" x 8.0" painted aluminum-alloy wheels
 - LED fog lights
 - Body-color outside mirrors with puddle lights
 - Auto-dimming outside mirrors
 - Power sliding glass moonroof
 - Power liftgate
 - Remote Engine Start System¹⁸
- HomeLink® Universal Transceiver
 - Auto-dimming rearview mirror
 - 120-volt AC power outlet³⁰
 - Footwell lights
 - Memory System – driver's seat, steering wheel, and outside mirrors
 - Leather-appointed seats
 - Leather-appointed door trim with double stitching
 - Wood-tone trim
 - Bose Premium Audio System with 13 speakers, including center speaker and subwoofer
 - Bose AudioPilot™ Noise Compensation Technology

AVAILABLE PACKAGE:

- Captain's Chairs Package



MIDNIGHT EDITION® INCLUDES SL EQUIPMENT PLUS:

- 20" x 8.0" black-painted machine-finished aluminum-alloy wheels
- Black lower center bumper fascias
- Black grille
- Black rear finisher
- Power heated and folding black outside mirrors with LED turn signal indicators
- Black exterior badging
- Black roof rails
- Black interior trim and headliner
- Midnight Edition Floor Mats
- Carpeted Cargo Area Protector²⁵

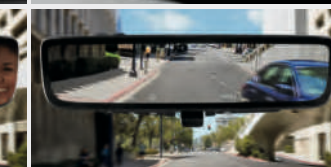
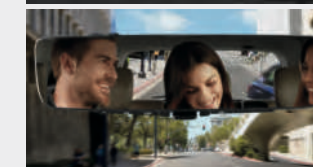


PLATINUM INCLUDES SL EQUIPMENT PLUS:

- Vehicle-speed-sensitive power steering
- Intelligent Back-Up Intervention³¹
- Intelligent Rear View Mirror³²
- Traffic Sign Recognition³³
- 22" dark-finished aluminum-alloy wheels
- Chrome outside mirrors
- Windshield wiper deicer
- Rain-sensing windshield wipers
- Rear step lamp
- Illuminated cup holders
- Climate-controlled front seats (heated and cooled)
- Heated outboard second-row seats
- Power recline and fold third-row 60/40-split fold-down bench seat
- Quilted leather-appointed seats
- Birdseye Maple wood-tone trim
- Heated leather-wrapped steering wheel with contrast stitching
- Tri-Zone Entertainment System with dual 8" monitors, remote control, two wireless headphones, USB and HDMI input^{3, 7}
- Additional USB port (five total)³

AVAILABLE PACKAGE:

- Captain's Chairs Package



CHOOSE YOUR PACKAGE

SV APPEARANCE PACKAGE

- 20" dark machine-finished aluminum-alloy wheels
- Fog lights
- Auto-dimming rearview mirror
- HomeLink® Universal Transceiver
- Power liftgate



CAPTAIN'S CHAIRS PACKAGE

- Second-row fold-down captain's chairs with tip-up easy entry for third row
- Second-row padded center console with cup holders



CHOOSE YOUR ACCESSORIES



A. Illuminated Kick Plates

For a grand entrance every time.

B. Cargo Net²⁵

The easy solution to bringing more.

C. Rear Tailgate Illuminated Scuff Guard

A bright idea that protects your tailgate.

D. Interior Accent Lighting

Starts every trip with a warm glow.

E. All-Season Floor Mats

Neither rain, sleet, nor snow will mess your ride.

F. Rear Bumper Step

A little help when loading up.

G. All-Season Cargo Area Protector²⁵

Preserve and protect your cargo – and your Armada.

H. Weight-Distributing Hitch Ball Mount, Class IV⁹

We'll hook you up.

Additional Accessories:

- Frameless Auto-dimming Rearview Mirror with Universal Remote
- Carpeted Cargo Area Protector²⁵
- Cargo Organizer²⁵
- Impact Sensor
- Hatch Tent
- And More

For more information and to shop online for Armada[®] Genuine Nissan Accessories, go to bit.ly/21Armada-Accy

NISSAN ARMADA[®] ACCESSORIES

Turn brand-new into all you

Every Genuine Nissan Accessory is custom-fit, custom-designed and durability-tested. Each one is backed by Nissan's 3-year/36,000-mile (whichever occurs first) limited warranty (if installed by dealer at the time of purchase), and can be financed when installed by dealer at time of purchase.³⁴ Affiliated Yakima[®] accessories are not warranted by Nissan. Refer to product manufacturer for warranty details. Nissan Limited Warranty does not cover damages or failures to the vehicle caused by improper installation or alterations of any Nissan approved accessory or component. Contact your dealer/retailer for details.



Nissan Armada[®] Platinum shown in Aspen White TriCoat with Chrome Side Moldings, Chrome Side Mirror Covers (standard on Platinum), Exterior Ground Lighting, Roof Rail Crossbars,^{25, 35} Side-Window Deflectors, Moonroof Wind Deflector, Rear Bumper Step, Hitch Ball Mount, Class III,⁹ Hitch Ball, Class III,⁹ and Affiliated Yakima[®] SkyBox.³⁶

SPECIFICATIONS

Engine	SV	SL	Midnight Edition	Platinum
Endurance® 5.6-liter DOHC 32-valve V8 engine	■	■	■	■
— 400 hp @ 5,800 rpm ⁸				
— 413 lb-ft of torque @ 4,000 rpm ⁸				
Variable Valve Event and Lift (VVEL®) technology	■	■	■	■
Direct Injection Gasoline (DIG)	■	■	■	■

Drivetrain	SV	SL	Midnight Edition	Platinum
Intelligent 4x4 with 2-speed transfer case ¹⁰	□	□	□	□
7-speed automatic transmission manual shift mode and Downshift Rev Matching	■	■	■	■
Final drive ratio (2.937:1)	■	■	■	■

Brakes	SV	SL	Midnight Edition	Platinum
13.8" front and rear vented disc brakes	■	■	■	■
Anti-lock Braking System (ABS)	■	■	■	■
Electronic Brake force Distribution (EBD)	■	■	■	■
Brake Assist ²¹	■	■	■	■

Suspension/Steering	SV	SL	Midnight Edition	Platinum
Independent double-wishbone front/rear suspension	■	■	■	■
Auto-leveling rear suspension	■	■	■	■
Front and rear stabilizer bars	■	■	■	■
Engine-speed-sensitive power steering	■	■	■	■
Vehicle-speed-sensitive power steering				■

Driver Assistance Technologies	SV	SL	Midnight Edition	Platinum
Intelligent Cruise Control ¹⁷	■	■	■	■
Intelligent Driver Alertness ²²	■	■	■	■
Lane Departure Warning ¹⁶	■	■	■	■
Intelligent Lane Intervention ¹⁶	■	■	■	■
Intelligent Forward Collision Warning ²³	■	■	■	■
Automatic Emergency Braking with Pedestrian Detection ¹²	■	■	■	■
Blind Spot Warning ¹⁵	■	■	■	■
Intelligent Blind Spot Intervention ¹⁵	■	■	■	■
Intelligent Rear View Mirror ³²	■	■	■	■
Rear Cross Traffic Alert ¹⁴	■	■	■	■
Intelligent Back-Up Intervention ³¹				■
RearView Monitor ³⁷	■			
Intelligent Around View® Monitor ²⁹		■	■	■
Front and Rear Sonar System ²⁴	■	■	■	■
Rear Automatic Braking ¹³	■	■	■	■
High Beam Assist	■	■	■	■
Traffic Sign Recognition ³³				■
Hill start assist	■	■	■	■
Vehicle Dynamic Control (VDC) ³⁸ with Traction Control System (TCS)	■	■	■	■
Active Brake Limited Slip (ABLS)	■	■	■	■
Trailer sway control ⁹		■	■	■
Trailer brake controller ⁹	■	■	■	■

Wheels/Tires	SV	SL	Midnight Edition	Platinum
18" x 8.0" aluminum-alloy wheels	■			
20" x 8.0" dark machine-finished aluminum-alloy wheels	A	■		
20" x 8.0" black-painted machine-finished aluminum-alloy wheels			■	
22" x 8.0" forged aluminum-alloy wheels				■
P265/70R18 all-season tires	■			
P275/60R20 all-season tires	A	■	■	
P275/50R22 all-season tires				■

Exterior Features	SV	SL	Midnight Edition	Platinum
Black lower center bumper fascias			■	
LED low/high-beam headlights with integrated signature	■	■	■	■
LED fog lights	A	■	■	■
Dark gray roof rails	■	■		■
Black roof rails			■	
Body-color overfenders	■	■	■	■
Power heated and folding outside mirrors with LED turn signal indicators	■	■	■	■
Chrome outside mirrors		■	■	■
Outside mirrors with puddle lights		■	■	■
Auto-dimming outside mirrors		■	■	■
Power sliding glass moonroof with one-touch open/close and tilt feature		■	■	■
Power liftgate	A	■	■	■
Class IV tow hitch receiver with 7-pin wiring harness ⁹	■	■	■	■
Seven-pin wiring harness and trailer brake pre-wiring ⁹	■	■	■	■

Comfort/Convenience	SV	SL	Midnight Edition	Platinum
Dual Zone Automatic Temperature Control	■	■	■	■
Rear air conditioning with rear controls	■	■	■	■
In-cabin microfilter	■	■	■	■
Nissan Intelligent Key® with Push Button Ignition	■	■	■	■
Remote Engine Start System ¹⁸		■	■	■
HomeLink® Universal Transceiver	A	■	■	■
Rear Door Alert ³⁹	■	■	■	■
Variable intermittent windshield wipers	■	■	■	■
Rain-sensing windshield wipers		■	■	■
Intermittent rear window wiper	■	■	■	■
Windshield wiper deicer		■	■	■
Auto-dimming rearview mirror	A	■	■	■
Sun visors with illuminated vanity mirrors and extension	■	■	■	■
Three 12-volt DC power outlets ³	■	■	■	■
120-volt AC power outlet ³⁰		■	■	■
Footwell lights		■	■	■
Four cup holders and eight bottle holders	■	■	■	■
Illuminated cup holders				■
Cargo-area storage under rear floor ²⁵	■	■	■	■
Eight cargo tie-down hooks ²⁵	■	■	■	■

Seating/Appointments	SV	SL	Midnight Edition	Platinum
10-way power driver's and front-passenger's seats	■	■	■	■
Memory System – driver's seat, steering wheel, and outside mirrors		■	■	■
Heated front seats	■	■	■	
Climate-controlled front seats (heated and cooled)				■
Heated second-row seats				■
Second-row 60/40-split fold-down bench seat	■	■	■	■
Second-row fold-down captain's chairs		C	■	C
Second-row padded center console with cup holders		C	■	C
Third-row 60/40-split fold-down bench seat	■	■	■	■
Power recline and fold third-row				■
Leatherette seats	■			
Leather-appointed seats		■	■	
Quilted leather-appointed seats				■
Leather-wrapped steering wheel	■	■	■	
Heated leather-wrapped steering wheel				■
Leather-wrapped shift knob	■	■	■	■
Leather-appointed door trim with double stitching		■	■	■
Silky-carbon interior trim	■		■	
Wood-tone trim		■		
Birdseye Maple wood-tone trim				■

Infotainment	SV	SL	Midnight Edition	Platinum
7" Advanced Drive-Assist® Display ^{26, 27}	■	■	■	■
NissanConnect® 12.3" color touch-screen display ²	■	■	■	■
Nissan Door to Door Navigation ²⁸	■	■	■	■
Wireless Apple CarPlay® integration ²	■	■	■	■
Android Auto™ ²	■	■	■	■
NissanConnect® Services powered by SiriusXM® with trial access to 5-year Select and Plus, and 6-month Premium packages ²	■	■	■	■
NissanConnect® with Wi-Fi Hotspot ²	■	■	■	■
Wireless charger ³	■	■	■	■
SiriusXM® Traffic and Travel Link with 3-month complimentary trial access ²	■	■	■	■
Hands-free Text Messaging Assistant ⁴	■	■	■	■
AM/FM audio system with 6 speakers	■			
Bose Premium Audio System with 13 speakers, including Bose AudioPilot™		■	■	■
Tri-Zone Entertainment System with dual 8" monitors, remote control, two wireless headphones, USB and HDMI input ^{3, 7}				■
Two USB-A and two USB-C connection ports ³	■	■	■	■
Steering wheel-mounted controls	■	■	■	■

Safety/Security	SV	SL	Midnight Edition	Platinum
Nissan Advanced Air Bag System with dual-stage supplemental front air bags with seat belt and occupant-classification sensors ⁴⁰	■	■	■	■
Driver and front-passenger seat-mounted side-impact supplemental air bags ⁴⁰	■	■	■	■
Roof-mounted curtain side-impact supplemental air bags for outboard occupant head protection for all three rows ⁴⁰	■	■	■	■
LATCH System (Lower Anchors and Tethers for CHildren)	■	■	■	■
Tire Pressure Monitoring System (TPMS) with Easy-Fill Tire Alert ^{41, 42}	■	■	■	■

DIMENSIONS/CAPACITIES/MPG

Exterior Dimensions – Inches	
Wheelbase	121.1
Overall length/width/height	208.9/79.9/75.8
Track width (front/rear)	67.5/67.9

Vehicle Clearance	
Minimum Ground Clearance (inches) SV	9.1
Minimum Ground Clearance (inches) SL, ME, Platinum	9.2
Angle of approach (degrees) SV	20.8
Angle of approach (degrees) SL, ME, Platinum	21
Angle of departure (degrees) SV	22.2
Angle of departure (degrees) SL, ME, Platinum	22.4
Breakover angle (degrees) SV	20.5
Breakover angle (degrees) SL, ME, Platinum	20.7

Interior Dimensions – Inches	
Head room without moonroof (front)	40.9
Head room with moonroof (front)	39.8
Head room (2nd row/3rd row)	40.0/36.4
Leg room (front row/2nd row/3rd row)	41.9/41.0/28.4
Hip room (front row/2nd row/3rd row)	59.2/58.4/48.8
Shoulder room (front row/2nd row/3rd row)	63.8/63.4/60.5

Capacities	
Seating capacity with 2nd-row bench seat	8
Seating capacity with Captain's Chair Package	7
Fuel tank (gals.)	26
Maximum towing capacity (lbs.) ⁹	8,500
Tongue weight capacity (lbs.)	850

2021 EPA Fuel Economy Estimates ⁴³	
City/Highway/Combined MPG	
4x2	14/19/16
4x4	13/18/15

NISSAN ROADSIDE ASSISTANCE

Your peace of mind is on us. For 36 months or 36,000 miles, whichever comes first, your new Nissan vehicle is covered for the following:⁴⁴

- Flat-tire changes
- Trip Interruption benefits
- Jump starts
- Vehicle lockouts
- Emergency fuel delivery

Follow Nissan on:



visit [NissanUSA.com/armada](https://www.nissanusa.com/armada)

PRINTED IN USA



Sign up to get the latest on
Nissan vehicles, news, and events.

<https://www.nissanusa.com/brochures/request-brochure.html>



Nissan Intelligent Mobility moves you one step ahead. In cars that feel like an extension of you, helping you see more and sense more, reacting with you, and sometimes even for you. Nissan Intelligent Mobility is about a better future – moving through life with greater confidence, excitement and connection to the world around you.

¹Availability of features vary by vehicle model year, model, trim level, packaging, and options. Please see Owner's Manual for important feature information. ²Use feature only when safe and legal. Compatible device and service required. Subject to third party service availability. For more information see NissanUSA.com/connect/legal. ³Driving is serious business and requires your full attention. If you have to use the connected device while driving, exercise extreme caution at all times so full attention may be given to vehicle operation. ⁴Use the text messaging feature after stopping your vehicle in a safe location. If you have to use the feature while driving, exercise extreme caution at all times so full attention may be given to vehicle operation. Compatible smartphone required. Text rates and/or data usage may apply. ⁵Available feature. ⁶Do not ride in a moving vehicle when the seatback is reclined. For the most effective protection, the seat should be upright. See Owner's Manual for safety information. ⁷Tri-Zone operation requires compatible auxiliary media system. See Owner's Manual for details. ⁸Horsepower and torque figures based on premium fuel only. ⁹Towing capability varies by configuration. See Nissan Towing Guide and Owner's Manual for additional information. Always secure cargo. ¹⁰Intelligent 4x4 cannot prevent collisions or provide enhanced traction in all conditions. Always monitor traffic and weather conditions. ¹¹Nissan Safety Shield technologies can't prevent all collisions or warn in all situations. See Owner's Manual for important safety information. ¹²Automatic Emergency Braking with Pedestrian Detection cannot prevent all collisions and may not provide warning or braking in all conditions. Driver should monitor traffic conditions and brake as needed to prevent collisions. See Owner's Manual for safety information. ¹³Rear Automatic Braking cannot prevent all collisions and may not provide warning or braking in all conditions. Driver should always turn and check surroundings before driving and brake as needed to prevent collisions. See Owner's Manual for safety information. ¹⁴Rear Cross Traffic Alert may not detect all vehicles. See Owner's Manual for safety information. ¹⁵Blind Spot Warning and Intelligent Blind Spot Intervention cannot prevent collisions and may not detect every object or warn in all situations. Driver should always turn and look before changing lanes. See Owner's Manual for safety information. ¹⁶Lane Departure Warning and Intelligent Lane Intervention only operate when lane markings are able to be detected. See Owner's Manual for safety information. ¹⁷Intelligent Cruise Control uses limited braking and is not a collision avoidance or warning system. Driver should monitor traffic conditions and brake as needed to prevent collisions. See Owner's Manual for safety information. ¹⁸State laws may apply. Review before using. ¹⁹Extra cost option. ²⁰Leather appointments. ²¹Brake Assist cannot prevent all collisions and may not provide warning or braking in all conditions. Driver should monitor traffic conditions and brake as needed to prevent collisions. See Owner's Manual for safety information. ²²Intelligent Driver Alertness cannot provide a warning in every situation. See Owner's Manual for safety information. ²³Intelligent Forward Collision Warning cannot prevent collisions. See Owner's Manual for safety information. ²⁴Sonar System may not detect every object. Driver should always check surroundings before driving. See Owner's Manual for safety information. ²⁵Cargo and load capacity limited by weight and distribution. Always secure cargo. Heavy loading of the vehicle with cargo, especially on the roof, will affect the handling and stability of the vehicle. ²⁶Driving is serious business and requires your full attention. If you have to use the feature while driving, exercise extreme caution at all times so full attention may be given to vehicle operation. ²⁷Information displayed is dependent on how vehicle is equipped. ²⁸Never program while driving. GPS mapping may not be detailed in all areas or reflect current road status. ²⁹Intelligent Around View[®] Monitor cannot eliminate blind spots and may not detect every object. Driver should always turn and check surroundings before driving. See Owner's Manual for safety information. ³⁰120-volt power outlet is intended only for use with compatible items. Please check specifications of wattage and amperage of items to be plugged in to determine compatibility. ³¹Intelligent Back-Up Intervention may not detect every object. Driver should always turn and check surroundings before driving. See Owner's Manual for safety information. ³²Intelligent Rear View Mirror may not detect every object and does not eliminate blind spots or warn of moving objects. See Owner's Manual for safety information. ³³Traffic Sign Recognition may not detect and read all traffic signs in all conditions. Driver should monitor all traffic signs and obey all traffic laws. See Owner's Manual for details. ³⁴Genuine Nissan Accessories are covered by Nissan's limited warranty on Genuine Nissan Replacement Parts, Genuine NISMO[®] 5-Tune Parts, and Genuine Nissan Accessories for the longer of 12 months/12,000 miles (whichever occurs first) or the remaining period under the 36-months/36,000-mile (whichever occurs first) new vehicle limited warranty. Terms and conditions apply. See dealer, warranty information booklet, or parts.nissanusa.com for details. ³⁵Genuine Nissan Accessory Roof Rail Crossbars have a maximum weight limit of 100 lbs. ³⁶Not a genuine Nissan part/accessory. Not warranted by Nissan. Refer to product manufacturer for warranty details. Nissan Limited Warranty does not cover damages or failures to the vehicle caused by improper installation or alterations of any Nissan approved accessory or component. Contact your dealer/retailer for details. ³⁷RearView Monitor may not detect every object and does not eliminate blind spots or warn of moving objects. See Owner's Manual for safety information. ³⁸Vehicle Dynamic Control cannot prevent collisions due to abrupt steering, carelessness, or dangerous driving techniques. It should remain on when driving, except when freeing the vehicle from mud or snow. See Owner's Manual for safety information. ³⁹Does not detect people or cargo. Always check rear seat before exiting. See Owner's Manual for safety information. ⁴⁰Air bags are only a supplemental restraint system. Always wear your seat belt. Rear-facing child restraints should not be placed in the front-passenger's seat. All children 12 and under should ride in the rear seat properly secured in child restraints, booster seats, or seat belts according to their size. Air bags will only inflate in certain accidents. See Owner's Manual for safety information. ⁴¹Tire Pressure Monitoring System is not a substitute for regular tire pressure checks. See Owner's Manual for safety information. ⁴²Vehicle must be on for the Easy-Fill Tire Alert to operate. ⁴³2021 EPA Fuel Economy Estimates. Actual mileage may vary with driving conditions. Use for comparison only. ⁴⁴Roadside Assistance available for a period of 36 months/36,000 miles from the date the vehicle is delivered to the first retail buyer or otherwise put into use, whichever is earlier. Apple CarPlay[®], Siri[®], Siri[®] Eyes Free, and Apple Music[®] are registered trademarks of Apple, Inc. AudioPilot[™] is a trademark of The Bose Corporation. Bluetooth[®] word mark and logos are owned by Bluetooth SIG, Inc., and any use of such marks by Nissan is under license. Bose[®] is a registered trademark of The Bose Corporation. Facebook[®] is a registered trademark of Facebook, Inc. Google, Android, Android Auto, YouTube, and other marks are trademarks of Google LLC. iPhone[®] is a registered trademark of Apple, Inc. All rights reserved. iPhone[®] or other external device not included. HD Radio[®] is a registered trademark of iBiquity Digital Corporation. HomeLink[®] is a registered trademark of Gentex Corporation. The Sirius[®], XM[®], and SiriusXM[®] names and all related marks and logos are trademarks of Sirius XM Radio Inc. All other trademarks are the property of their respective owners. Twitter[®] is a registered trademark of Twitter, Inc. This brochure is intended for general descriptive and informational purposes only. It is subject to change and does not constitute an offer, representation or warranty (express or implied) by Nissan North America, Inc. Interested parties should confirm the accuracy of any information in this brochure as it relates to a vehicle directly with Nissan North America, Inc., before relying on it to make a purchase decision. Nissan North America, Inc., reserves the right to make changes, at any time, without prior notice, in prices, colors, materials, equipment, specifications, and models and to discontinue models or equipment. Due to continuous product development and other pre- and post-production factors, actual vehicle, materials and specifications may vary from this brochure. Some vehicles shown with optional equipment. See the actual vehicle for complete accuracy. Availability and delivery times for particular models or equipment may vary. Specifications, options and accessories may differ in Hawaii, U.S. territories and other countries. For additional information on availability, options or accessories, see your Nissan dealer or contact Nissan North America, Inc. At NissanUSA.com, you'll find virtual product demonstrations, a way to "build your own Nissan," a dealer locator, and more information about key Nissan support services. Or if you'd prefer, call **1-800-NISSAN-3** for answers to specific questions about Armada[®] or any other Nissan vehicle. The Nissan names, logos, product names, feature names, and slogans are trademarks owned by or licensed to Nissan Motor Co. Ltd. and/or its North American subsidiaries. Other trademarks and trade names are those of their respective owners. **Always wear your seat belt, and please drive responsibly.** ©2020 Nissan North America, Inc. ²¹Armada[®]. 2103268-N-12/20-80K-KSL