

2021
LEAF®



Zero Emission

There's excitement. Then there's the kind of excitement that makes every moment behind the wheel a rush. Up to 226 miles of range on Nissan LEAF® S PLUS means your destination possibilities have opened up.¹ Put your compatible smartphone on the big screen and connect to your world.² Drive with more confidence, thanks to a suite of standard Nissan Safety Shield® 360 features that can look out all around you.³ The 2021 Nissan LEAF. This is how driving should feel. This is Nissan Intelligent Mobility.⁴

EPA RANGE UP TO

226

MILES ON S PLUS¹

SL PLUS shown with

EPA range up to 215 miles.¹



Feel the rush of instant acceleration

It's a thrill you never saw coming. Nissan LEAF's 100% electric drive-train delivers instant acceleration as soon as you touch the pedal. Turn the wheel, and the fun continues, with a battery pack that sits low in the chassis, letting you hug the road.



e-Pedal – One-pedal driving



Imagine having the option to drive with one pedal. Just press down for an instant rush and ease off to slow down and come to a stop. It's not only fun, but encourages you to drive more efficiently, and can help extend your range.¹ Of course, going back to driving with two pedals is as easy as flipping a switch.⁵

Confidence has never come this easy

Helps keep you centered –
even in gentle curves⁶

Helps maintain your preset
speed and distance⁶

Can even come to a
complete stop⁶



ProPILOT Assist

With available ProPILOT Assist, the Nissan LEAF® helps out with daily highway driving – helping you follow the car ahead at a preset distance or helping keep you centered in your lane. It can even bring you to a full stop based on the traffic flow, and can bring you back up to speed when traffic starts moving again. It all adds up to a more confident, enjoyable drive.⁶



Nissan Safety Shield® 360

Nissan Intelligent Mobility is changing how you move forever with technology that makes you feel more connected, confident, and excited.

As part of Nissan Intelligent Mobility, Safety Shield 360 consists of features that help you see more, sense more, and can give you an assist when you need it. The following features are standard on Nissan LEAF.^{3,4}



Automatic Emergency Braking with Pedestrian Detection⁷



Rear Automatic Braking⁸



Rear Cross Traffic Alert⁹



Blind Spot Warning¹⁰



Lane Departure Warning¹¹



High Beam Assist

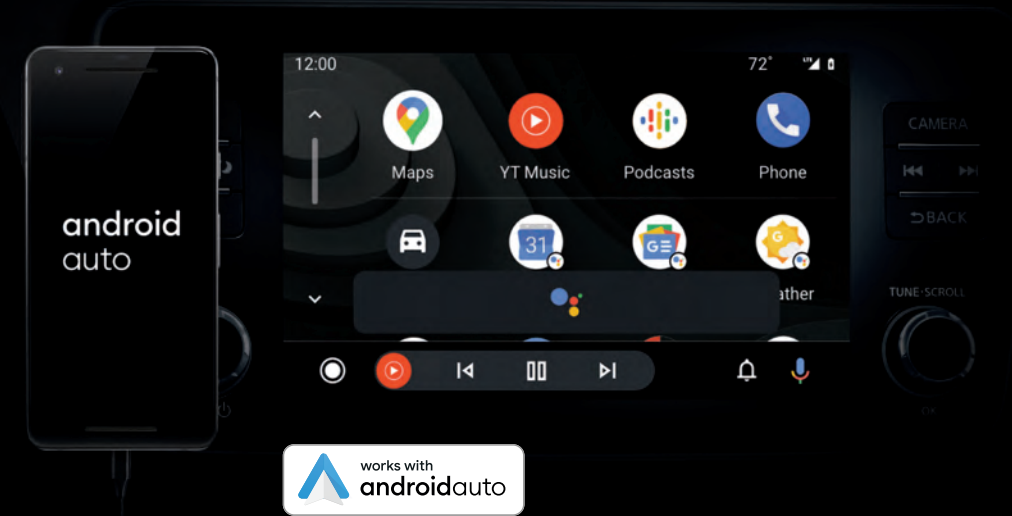


Blind Spot Warning¹⁰

There's nothing like seeing it on the big screen



People to see? Places to be? Just ask Siri®. Equipped with Siri® voice control, standard Apple CarPlay® brings your contacts, favorite messaging apps, Apple Music® playlists, Apple Maps, and more on board to your Nissan LEAF. Simply plug in your compatible iPhone® and go.^{2,12}

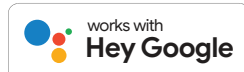


With standard Android Auto,[™] you can keep your eyes on the road and hands on the wheel while using your voice to help you with your day. Ask Google to play your favorite song, navigate home, or respond to a text hands-free. Just say, "Hey Google" or long-press the voice control button on your steering wheel.^{12,13,14}



Get your day started with NissanConnect® EV & Services

Your Nissan LEAF® is powered up and you're connected – and you haven't even stepped out of the house yet. The NissanConnect® EV Skill with Amazon Alexa or the NissanConnect® EV Action on Google makes it possible. Or just use the NissanConnect® EV & Services app on your compatible smartphone to lock and unlock your doors, heat or cool your cabin while charging, and more.^{2, 12, 15}



Connect the way you want

With NissanConnect® technologies, you can tailor how you stay in touch. Plug in and access your compatible smartphone. Available Nissan Door to Door Navigation makes driving to your next destination seamless. Bluetooth® and hands-free texting mean it's easier than ever to connect with your world. And you'll stay charged up with three standard USB ports, and a standard USB-C port.^{2, 12, 13, 14}

Charging at home

Charge overnight, when electricity rates are often lower, using an available 240-V plug.¹⁶



It's never been easier to get a home charger installed with Amazon Home Services.

AT-HOME 240-V CHARGING¹⁷



62 kWh BATTERY:
EPA Range up to 226 Miles on Nissan LEAF S PLUS¹
Approx. 11.5 Hours = Full Charge¹⁷

40 kWh BATTERY:
EPA Range up to 149 Miles on Nissan LEAF S and SV¹
Approx. 8 Hours = Full Charge¹⁷

EPA Range up to 215 miles as shown on Nissan LEAF SL PLUS.



Charging on the go

An ever-expanding network of public EV charging stations means you've got a lot of options for your next charge. Just use the available menu on your Nissan LEAF's center touch-screen display – you can even filter for the type of charger you are looking for, type of payment method, and more.^{12, 18}

PUBLIC DC QUICK CHARGING^{17, 18}



62 kWh BATTERY:
EPA Range up to 226 Miles on Nissan LEAF S PLUS¹
Approx. 45 Minutes = 80% Charge¹⁷ (100 kW)
Approx. 60 Minutes = 80% Charge¹⁷ (50 kW)

40 kWh BATTERY:
EPA Range up to 149 Miles on Nissan LEAF S and SV¹
Approx. 40 Minutes = 80% Charge¹⁷ (50 kW)

EPA Range up to 215 miles as shown on Nissan LEAF SL PLUS.



Available 120-V/240-V portable charge cable.¹⁶

Grab hold of a driver-centric design

It's all around you. Bold lines, distinctive touches, and the sense that this is a vehicle like no other. The Nissan LEAF's driver-centric environment proves you don't have to sacrifice comfort or convenience when driving electric. With features like a telescoping D-shaped steering wheel, distinctive center console, and a "floating" touch-screen display that puts your compatible iPhone® on center stage with Apple CarPlay,^{®12} it's clear this interior was designed with you in mind.

Bose Energy Efficient Series
Premium Audio System¹⁵

Customizable
digital gauge

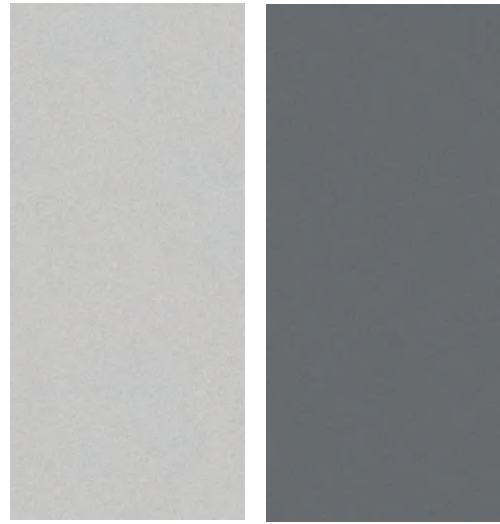
Zero Gravity
Seats¹⁹

D-shaped
steering wheel

CHOOSE YOUR COLOR

- Standard
- Optional

Nissan has taken care to ensure that the color swatches presented here are the closest possible representations of actual vehicle colors. Swatches may vary slightly due to the printing process and whether viewed in daylight, fluorescent or incandescent light. Please see the actual colors at your local Nissan dealer.



Glacier White

Pearl White TriCoat²¹

Brilliant Silver Metallic

Gun Metallic

	S	SV	SL	S	SV	SL	S	SV	SL	S	SV	SL
BLACK CLOTH	<input checked="" type="checkbox"/>				<input checked="" type="checkbox"/>			<input checked="" type="checkbox"/>			<input checked="" type="checkbox"/>	
BLACK LEATHER ²⁰						<input checked="" type="checkbox"/>			<input checked="" type="checkbox"/>			<input checked="" type="checkbox"/>
LIGHT GRAY LEATHER ²⁰												<input checked="" type="checkbox"/>



Sunset Drift ChromaFlair²¹

Scarlet Ember Tintcoat²¹

Deep Blue Pearl

Super Black

Two-tone Pearl White TriCoat/Super Black²¹

	S	SV	SL	S	SV	SL	S	SV	SL	S	SV	SL	S	SV	SL
BLACK CLOTH		<input checked="" type="checkbox"/>			<input checked="" type="checkbox"/>			<input checked="" type="checkbox"/>						<input type="checkbox"/> ²²	
BLACK LEATHER ²⁰			<input checked="" type="checkbox"/>			<input checked="" type="checkbox"/>			<input checked="" type="checkbox"/>						<input checked="" type="checkbox"/>
LIGHT GRAY LEATHER ²⁰															<input checked="" type="checkbox"/>

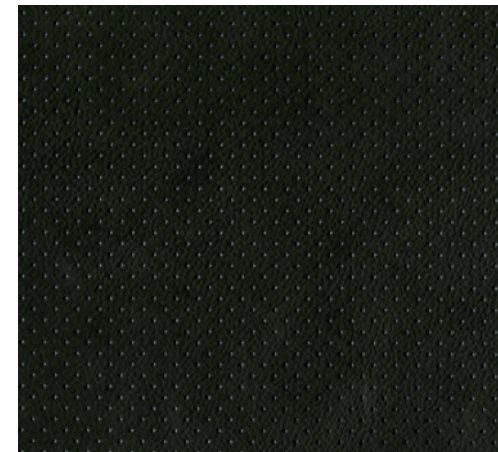
CHOOSE YOUR INTERIOR



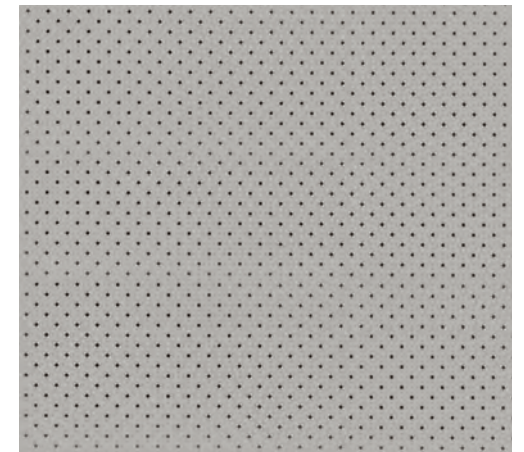
Nissan LEAF[®] SL PLUS shown in Light Gray Leather.²⁰



Black Cloth
S | SV



Black Leather²⁰
SL



Light Gray Leather²⁰
SL

CHOOSE YOUR TRIM LEVEL

LEAF®

S

- 40 kWh lithium-ion battery
- 110 kW AC synchronous electric motor with 147 hp and 236 lb-ft of torque
- 6.6 kW onboard charger
- Portable trickle-charge cable (120-V)
- e-Pedal⁵
- Intelligent Forward Collision Warning²³
- Automatic Emergency Braking with Pedestrian Detection⁷
- Intelligent Lane Intervention²⁴
- Intelligent Blind Spot Intervention²⁵
- Rear Cross Traffic Alert⁹
- RearView Monitor²⁶
- Rear Automatic Braking⁸
- High Beam Assist
- 16" Steel wheels with covers
- 7" Information display (in gauge cluster)

- NissanConnect® 8" touch-screen display¹²
- Apple CarPlay® integration¹²
- Android Auto™¹²
- Automatic Temperature Control
- Nissan Intelligent Key® with Push Button Start
- Rear Door Alert²⁷
- SiriusXM® Radio with 3-month subscription included¹²
- AM/FM audio system with four speakers
- Three USB ports and one USB-C port²

AVAILABLE PACKAGE: CHARGE PACKAGE

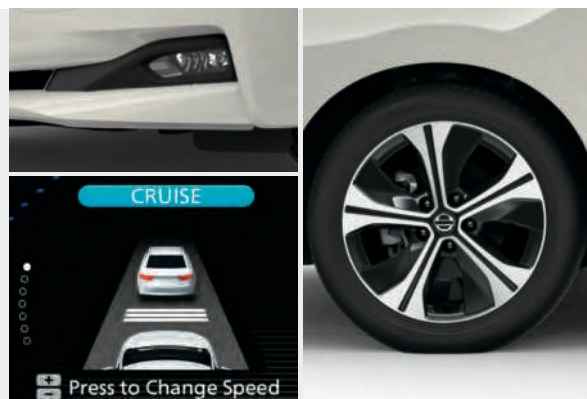


SV INCLUDES S EQUIPMENT AND ALSO:

- Quick Charge port - 50 kW
- Intelligent Cruise Control²⁸
- 17" Machine-finished aluminum-alloy wheels
- Fog lights
- Heated leather-wrapped steering wheel
- Nissan Door to Door Navigation with Premium Traffic¹⁴
- Heated outside mirrors

- Hybrid Heater System
- Heated front seats
- NissanConnect® EV & Services powered by SiriusXM® with trial access to 3-year EV and Select and 6-month Premium packages¹²
- SiriusXM® Traffic and Travel Link with 3-month trial access¹²
- AM/FM audio system with six speakers

AVAILABLE PACKAGE: TECHNOLOGY PACKAGE

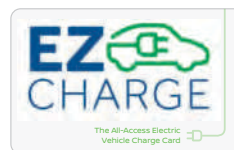


Fast. Easy. Charging.

With the EZ-Charge® card and the Nissan LEAF® EZ-Charge® app, it's never been easier to charge on the go.

EZ-Charge® lets you carry a single access card for charging your Nissan LEAF® on multiple networks across America, while the Nissan LEAF EZ-Charge® app provides charging station maps, the closest DC Quick Charger, a Route Planner, and more.¹⁸ Available in the Apple App Store® and Google Play.™ **EZ-Charge.com**

Images may show additional available equipment.



GET THE CARD



GET THE APP

LEAF PLUS

S PLUS INCLUDES S EQUIPMENT AND ALSO:

- 62 kWh lithium-ion battery
- 160 kW AC synchronous electric motor with 214 hp and 250 lb-ft of torque
- Quick Charge port - 100 kW

- Portable charge cable (120-V/240-V)
- 16" Aluminum-alloy wheels
- Front bumper chin spoiler

SV PLUS INCLUDES S PLUS EQUIPMENT AND ALSO:

- Intelligent Cruise Control²⁸
- 17" Machine-finished aluminum-alloy wheels
- Fog lights
- Heated leather-wrapped steering wheel
- Nissan Door to Door Navigation with Premium Traffic¹⁴
- Heated outside mirrors
- Hybrid Heater System

- Heated front seats
- NissanConnect® EV & Services powered by SiriusXM® with trial access to 3-year EV and Select and 6-month Premium packages¹²
- SiriusXM® Traffic and Travel Link with 3-month trial access¹²
- AM/FM audio system with six speakers

AVAILABLE PACKAGE: TECHNOLOGY PACKAGE



SL PLUS INCLUDES SV PLUS EQUIPMENT AND ALSO:

- ProPILOT Assist⁶
- Intelligent Around View® Monitor²⁹
- Intelligent Driver Alertness³⁰
- LED headlights with LED signature Daytime Running Lights
- Outside mirrors with integrated LED turn signal indicators
- Leather-appointed seats

- Auto-dimming rearview mirror with HomeLink® Universal Transceiver
- Removable cargo cover
- 8-way power adjustable driver's bucket seat with 2-way adjustable lumbar
- Bose Energy Efficient Series Premium Audio System with seven speakers

CHOOSE YOUR PACKAGE

CHARGE PACKAGE | S

- Quick Charge port - 50 kW

- Portable charge cable (120-V/240-V)

TECHNOLOGY PACKAGE | SV, SV PLUS

- Portable charge cable (120-V/240-V) (standard on SV PLUS)
- Electronic parking brake
- ProPILOT Assist⁶
- Intelligent Around View® Monitor²⁹
- Intelligent Driver Alertness³⁰

- LED headlights with LED signature Daytime Running Lights
- Auto-dimming rearview mirror with HomeLink® Universal Transceiver
- 8-way power adjustable driver's bucket seat with 2-way adjustable lumbar



CHOOSE YOUR ACCESSORIES



A. Illuminated Grille Emblem

Add some backlit style to your front emblem.

B. Rear Cargo Cover³²

No one outside needs to know what's in there.

C. Sill Plate Protectors

For a grand entry every time.

D. All-Season Floor Mats

Neither sleet, snow, nor mud shall mess up your ride.

E. Clear Charging Port Protector

Keep your port in top condition, even with everyday charging.

F. Chrome Rear Bumper Protector

Scratches? What scratches?

G. Carpeted Cargo Area Protector³²

The plush way to protect.

H. Portable Charge Cable

No charging station? No problem. Just plug in with the portable charge cable.

Additional Accessories:

- Cargo Organizer³²
- Carpeted Floor Mats
- Splash Guards
- Cargo Net³²
- Nissan Stainless Steel License Plate Frame
- Nissan Valve Stem Caps
- Door Edge Protectors
- And More

For more information and to shop online for LEAF® Genuine Nissan Accessories, go to bit.ly/21leaf-estore

GENUINE NISSAN ACCESSORIES

It's unique, now make it yours

Every Genuine Nissan Accessory is custom-fit, custom-designed and durability-tested. Each one is backed by Nissan's 3-year/36,000-mile (whichever occurs first) limited warranty (if installed by dealer at the time of purchase), and can be financed when installed by dealer at time of purchase.³¹



Nissan LEAF® SL PLUS shown in Pearl White TriCoat with Chrome Rear Bumper Protector and Splash Guards.

SPECIFICATIONS

Electric Motor	S	SV	S PLUS	SV PLUS	SL PLUS
110 kW AC synchronous electric motor Horsepower – 147 hp Torque – 236 lb-ft	■	■			
160 kW AC synchronous electric motor Horsepower – 214 hp Torque – 250 lb-ft			■	■	■
Emissions – Zero Emissions Vehicle (ZEV) ³³	■	■	■	■	■
40 kWh lithium-ion battery	■	■			
62 kWh lithium-ion battery			■	■	■
6.6 kW onboard charger	■	■	■	■	■
Portable trickle-charge cable (120-V)	■	■			
Portable charge cable (120-V/240-V)	C	T	■	■	■
Quick Charge port – 50 kW	C	■			
High-output Quick Charge port – 100 kW			■	■	■

Drivetrain	S	SV	S PLUS	SV PLUS	SL PLUS
Regenerative braking system	■	■	■	■	■
Eco Mode	■	■	■	■	■
B-mode	■	■	■	■	■

Brakes	S	SV	S PLUS	SV PLUS	SL PLUS
Front and rear vented disc brakes	■	■	■	■	■
4-wheel Anti-lock Braking System (ABS)	■	■	■	■	■
Electronic Brake force Distribution (EBD)	■	■	■	■	■
Brake Assist ³⁴	■	■	■	■	■
Electronic parking brake		T		T	■

Suspension/Chassis Bracing/Steering	S	SV	S PLUS	SV PLUS	SL PLUS
Independent strut front suspension	■	■	■	■	■
Torsion beam rear suspension	■	■	■	■	■
Front and rear stabilizer bars	■	■	■	■	■
Vehicle-speed-sensitive electric power steering	■	■	■	■	■

Driver Assistance Technologies	S	SV	S PLUS	SV PLUS	SL PLUS
e-Pedal ⁵	■	■	■	■	■
Cruise control	■		■		
Intelligent Cruise Control ²⁸		■		■	
ProPILOT Assist ⁶		T		T	■
Intelligent Forward Collision Warning ²³	■	■	■	■	■
Automatic Emergency Braking with Pedestrian Detection ⁷	■	■	■	■	■
Intelligent Lane Intervention ²⁴	■	■	■	■	■
Intelligent Blind Spot Intervention ²⁵	■	■	■	■	■
Rear Cross Traffic Alert ⁹	■	■	■	■	■
RearView Monitor ²⁶	■	■	■	■	■
Intelligent Around View [®] Monitor ²⁹		T		T	■
Rear Sonar System ³⁵	■	■	■	■	■
Rear Automatic Braking ⁸	■	■	■	■	■
High Beam Assist	■	■	■	■	■
Active Ride Control	■	■	■	■	■
Intelligent Trace Control ³⁶	■	■	■	■	■
Hill start assist	■	■	■	■	■

■ Standard C Part of S Charge Package T Part of SV/SV PLUS Technology Package

Driver Assistance Technologies (continued)	S	SV	S PLUS	SV PLUS	SL PLUS
Intelligent Driver Alertness ³⁰		T			■
Vehicle Dynamic Control (VDC) ³⁷ with Traction Control System (TCS)	■	■	■	■	■

Wheels/Tires	S	SV	S PLUS	SV PLUS	SL PLUS
16" x 6.5" steel wheels	■				
16" x 6.5" aluminum-alloy wheels			■		
17" x 6.5" machine-finished aluminum-alloy wheels		■		■	■
P205/55R16 All-Season tires	■		■		
P215/50R17 All-Season tires	■	■		■	■
Tire repair kit	■	■	■	■	■

Exterior Features	S	SV	S PLUS	SV PLUS	SL PLUS
Halogen headlights	■	■	■	■	
LED headlights with LED signature Daytime Running Lights		T		T	■
Automatic on/off headlights	■	■	■	■	■
Fog lights		■		■	■
Aerodynamic underbody panels and rear diffuser	■	■	■	■	■
Front bumper chin spoiler				■	■
Rear spoiler	■	■	■	■	■
Dual power outside mirrors	■	■	■	■	■
Heated outside mirrors		■		■	■
Outside mirrors with integrated LED turn signal indicators					■
Charge port with light and lock	■	■	■	■	■
UV-reducing solar glass	■	■	■	■	■

Comfort/Convenience	S	SV	S PLUS	SV PLUS	SL PLUS
Automatic Temperature Control	■	■	■	■	■
Hybrid heater system		■		■	■
Nissan Intelligent Key [®] with Push Button Start	■	■	■	■	■
12-volt DC power outlet ²	■	■	■	■	■
Power door locks with auto-locking feature	■	■	■	■	■
Power windows with driver's window one-touch auto-up/down	■	■	■	■	■
Tilt and telescoping steering column	■	■	■	■	■
Auto-dimming rearview mirror with HomeLink [®] Universal Transceiver		T		T	■
Variable intermittent windshield wipers and intermittent rear window wiper	■	■	■	■	■
Front map lights	■	■	■	■	■
Sun visors with vanity mirrors and extensions	■	■	■	■	■
Two cup holders	■	■	■	■	■
Four bottle holders	■	■	■	■	■
Removable cargo cover ³²					■

Seating/Appointments	S	SV	S PLUS	SV PLUS	SL PLUS
6-way manual adjustable driver's bucket seat	■	■	■	■	
8-way power adjustable driver's bucket seat with 2-way adjustable lumbar		T		T	■
4-way manual adjustable front-passenger's bucket seat	■	■	■	■	■

Seating/Appointments (continued)	S	SV	S PLUS	SV PLUS	SL PLUS
Cloth seat trim	■	■	■	■	
Leather-appointed seats					■
Heated front seats		■		■	■
60/40-split fold-down rear seats	■	■	■	■	■
Leather-wrapped steering wheel		■		■	■
Heated steering wheel		■		■	■

Infotainment	S	SV	S PLUS	SV PLUS	SL PLUS
7" Information display (in gauge cluster)	■	■	■	■	■
NissanConnect [®] 8" touch-screen display ¹²	■	■	■	■	■
Nissan Door to Door Navigation System with Premium Traffic ¹⁴		■		■	■
NissanConnect [®] EV & Services powered by SiriusXM [®] with trial access to 3-year EV and Select and 6-month Premium packages ¹²		■		■	■
Nissan Voice Recognition ¹⁴	■	■	■	■	■
Apple CarPlay [®] integration ¹²	■	■	■	■	■
Android Auto ^{™12}	■	■	■	■	■
SiriusXM [®] Traffic and Travel Link with 3-month trial access ¹²		■		■	■
Bluetooth [®] Hands-free Phone System ¹²	■	■	■	■	■
Hands-free Text Messaging Assistant ¹³	■	■	■	■	■
AM/FM audio system with four speakers	■	■	■		
AM/FM audio system with six speakers		■		■	
Bose Energy Efficient Series Premium Audio System with seven speakers					■
SiriusXM [®] Radio with 3-month subscription included ¹²	■	■	■	■	■
Radio Data System (RDS)	■	■	■	■	■
Streaming Audio via Bluetooth ^{®12}	■	■	■	■	■
Three USB ports and one USB-C port ²	■	■	■	■	■
Steering wheel-mounted audio controls	■	■	■	■	■

Safety/Security	S	SV	S PLUS	SV PLUS	SL PLUS
Nissan Advanced Air Bag System with dual-stage supplemental front air bags with seat belt and occupant-classification sensors ³⁸	■	■	■	■	■
Seat-mounted side-impact supplemental air bags for front and rear-seat outboard occupants ³⁸	■	■	■	■	■
Driver and front-passenger supplemental knee air bags ³⁸	■	■	■	■	■
Roof-mounted curtain supplemental air bags with rollover sensor for side-impact head protection for front and rear-seat outboard occupants ³⁸	■	■	■	■	■
3-point ALR/ELR passenger seat belt system (ELR for driver)	■	■	■	■	■
Front seat belts with pretensioners and load limiters	■	■	■	■	■
LATCH System (Lower Anchors and Tethers for Children)	■	■	■	■	■
Tire Pressure Monitoring System (TPMS) with Easy-Fill Tire Alert ^{39, 40}	■	■	■	■	■
Nissan Vehicle Immobilizer System	■	■	■	■	■
Vehicle Security System	■	■	■	■	■

DIMENSIONS/CAPACITIES/WEIGHTS/MPGe

Dimensions	
Exterior – Inches	
Wheelbase	106.3
Overall length/width/height	176.4/70.5/61.4 (S)
	176.4/70.5/61.6 (SV/S PLUS)
	176.4/70.5/62.0 (SV PLUS/SL PLUS)
Track width (front/rear)	60.6/61.2 (S/S PLUS)
	60.2/60.8 (SV/SV PLUS/SL PLUS)

Aerodynamics – Cd	
Drag coefficient	0.28

Interior (front/rear) – Inches			
Head room	41.2/37.3	Hip room	51.7/50.0
Leg room	42.1/33.5	Shoulder room	54.3/52.5

Capacities	
Seating capacity	5
EPA interior passenger volume (cu. ft.)	92.4
Total interior volume (cu. ft.)	116.0
Cargo volume with rear seat up (cu. ft.)	23.6
Cargo volume with rear seat down (cu. ft.)	30.0

Curb Weights – Lbs.					
	S	SV	S PLUS	SV PLUS	SL PLUS
Base total	3,501	3,568	3,850	3,914	3,930

2021 EPA Range and Fuel Economy Estimates ¹				
	S, SV	S PLUS	SV PLUS, SL PLUS	
Range (miles)	149	226	215	
City/Hwy/Cmb MPGe ¹	123/99/111	118/97/108	114/94/104	

NISSAN ROADSIDE ASSISTANCE

Your peace of mind is on us. For 36 months or 36,000 miles, whichever comes first, your new Nissan vehicle is covered for the following:⁴¹

- Flat-tire changes
- Trip Interruption benefits
- Jump starts
- Vehicle lockouts
- Emergency fuel delivery

Follow Nissan on:



visit [NissanUSA.com/LEAF](https://www.nissanusa.com/LEAF)

PRINTED IN POLAND



Sign up to get the latest on
Nissan vehicles, news, and events.

<https://www.nissanusa.com/brochures/request-brochure.html>



Nissan Intelligent Mobility moves you one step ahead. In cars that feel like an extension of you, helping you see more and sense more, reacting with you, and sometimes even for you. Nissan Intelligent Mobility is about a better future – moving through life with greater confidence, excitement and connection to the world around you.

¹2021 EPA range of 149 miles for LEAF[®] S, SV; 226 miles for LEAF S PLUS; 215 miles for LEAF SV PLUS, SL PLUS. 2021 EPA Fuel Economy Estimates 123 City MPGe/99 Highway MPGe/111 Combined MPGe for LEAF S and SV; 118 City MPGe/97 Highway MPGe/108 Combined MPGe for LEAF S PLUS; 114 City MPGe/94 Highway MPGe/104 Combined MPGe for LEAF SV PLUS and SL PLUS. Based on EPA formula of 33.7 kW/hour equal to one gallon of gasoline energy. Actual range will vary with trim levels, options, and driving conditions; see Customer Disclosure Form for details. ²Driving is serious business and requires your full attention. If you have to use the connected device while driving, exercise extreme caution at all times so full attention may be given to vehicle operation. ³Nissan Safety Shield technologies can't prevent all collisions or warn in all situations. See Owner's Manual for important safety information. ⁴Availability of features vary by vehicle model year, model, trim level, packaging, and options. Please see Owner's Manual for important feature information. ⁵Monitor traffic conditions and use conventional brake as needed to prevent collisions. See Owner's Manual for safety information. ⁶ProPILOT Assist cannot prevent collisions. It is the driver's responsibility to be in control of the vehicle at all times. Always monitor traffic conditions and keep both hands on the steering wheel. System operates only when lane markings are detected. Does not function in all weather, traffic and road conditions. System has limited control capability and the driver may need to steer, brake or accelerate at any time to maintain safety. See Owner's Manual for safety information. ⁷Automatic Emergency Braking with Pedestrian Detection cannot prevent all collisions and may not provide warning or braking in all conditions. Driver should monitor traffic conditions and brake as needed to prevent collisions. See Owner's Manual for safety information. ⁸Rear Automatic Braking cannot prevent all collisions and may not provide warning or braking in all conditions. Driver should always turn and check surroundings before driving and brake as needed to prevent collisions. See Owner's Manual for safety information. ⁹Rear Cross Traffic Alert may not detect all vehicles. See Owner's Manual for safety information. ¹⁰Blind Spot Warning cannot prevent collisions and may not detect every object or warn in all situations. Driver should always turn and look before changing lanes. See Owner's Manual for safety information. ¹¹Lane Departure Warning only operates when lane markings are able to be detected. See Owner's Manual for safety information. ¹²Use feature only when safe and legal. Compatible device and service required. Subject to third party service availability. For more information see [NissanUSA.com/connect/legal](https://www.nissanusa.com/connect/legal). ¹³Use the text messaging feature after stopping your vehicle in a safe location. If you have to use the feature while driving, exercise extreme caution at all times so full attention may be given to vehicle operation. Compatible smartphone required. Text rates and/or data usage may apply. ¹⁴Never program while driving. GPS mapping may not be detailed in all areas or reflect current road status. ¹⁵Available feature. ¹⁶Some chargers may not be compatible with your LEAF. Contact charger manufacturer before purchase for information on compatibility and warranty. Nissan does not warrant and is not responsible for loss, including consequential, incidental, or other damages, caused by charger defects or incompatibility. ¹⁷Charging capacity and times may vary based on battery temperature. ¹⁸Public charging networks are provided by independent companies, and are not within Nissan's control. Availability of charging stations not guaranteed. ¹⁹Zero Gravity seats for driver and outboard passengers only. ²⁰Leather appointments. ²¹Extra cost option. ²²Available with SV/SV PLUS Technology Package only. ²³Intelligent Forward Collision Warning cannot prevent collisions. See Owner's Manual for safety information. ²⁴Intelligent Lane Intervention only operates when lane markings are detectable. See Owner's Manual for safety information. ²⁵Intelligent Blind Spot Intervention cannot prevent all collisions and may not detect every object or warn in all situations. Driver should always turn and look before changing lanes. See Owner's Manual for safety information. ²⁶RearView Monitor may not detect every object and does not eliminate blind spots or warn of moving objects. See Owner's Manual for safety information. ²⁷Does not detect people or cargo. Always check rear seat before exiting. See Owner's Manual for safety information. ²⁸Intelligent Cruise Control uses limited braking and is not a collision avoidance or warning system. Driver should monitor traffic conditions and brake as needed to prevent collisions. See Owner's Manual for safety information. ²⁹Intelligent Around View[®] Monitor cannot eliminate blind spots and may not detect every object. Driver should always turn and check surroundings before driving. See Owner's Manual for safety information. ³⁰Intelligent Driver Alertness cannot provide a warning in every situation. See Owner's Manual for safety information. ³¹Genuine Nissan Accessories are covered by Nissan's Limited Warranty on Genuine Nissan Replacement Parts, Genuine NISMO[®] S-Tune Parts, and Genuine Nissan Accessories for the longer of 12 months/12,000 miles (whichever occurs first) or the remaining period under the 3-year/36,000-mile (whichever occurs first) Nissan New Vehicle Limited Warranty. Terms and conditions apply. See dealer, Warranty Information Booklet, or [parts.nissanusa.com](https://www.parts.nissanusa.com) for details. ³²Cargo and load capacity limited by weight and distribution. Always secure cargo. ³³Zero tailpipe emissions. ³⁴Brake Assist cannot prevent all collisions and may not provide warning or braking in all conditions. Driver should monitor traffic conditions and brake as needed to prevent collisions. See Owner's Manual for safety information. ³⁵Sonar System may not detect every object. Driver should always check surroundings before driving. See Owner's Manual for safety information. ³⁶Intelligent Trace Control cannot prevent collisions or loss of control. Driver should remain in control of vehicle at all times. See Owner's Manual for safety information. ³⁷Vehicle Dynamic Control cannot prevent collisions due to abrupt steering, carelessness, or dangerous driving techniques. It should remain on when driving, except when freeing the vehicle from mud or snow. See Owner's Manual for safety information. ³⁸Air bags are only a supplemental restraint system. Always wear your seat belt. Rear-facing child restraints should not be placed in the front-passenger's seat. All children 12 and under should ride in the rear seat properly secured in child restraints, booster seats, or seat belts according to their size. Air bags will only inflate in certain accidents. See Owner's Manual for safety information. ³⁹Tire Pressure Monitoring System is not a substitute for regular tire pressure checks. See Owner's Manual for safety information. ⁴⁰Vehicle must be on for the Easy-Fill Tire Alert to operate. ⁴¹For a period of 36 months/36,000 miles from the date the vehicle is delivered to the first retail buyer or otherwise put into use, whichever is earlier. Amazon Alexa and Amazon Home Services are trademarks of [Amazon.com, Inc.](https://www.amazon.com) or its affiliates. Android, Android Auto, Google, Google Assistant, Google Maps, Google Play, YouTube and other marks are trademarks of Google LLC. Google Assistant is not available in certain languages and countries. Apple CarPlay,[®] Apple Music,[®] App Store,[®] Siri[®] and Siri[®] Eyes Free are registered trademarks of Apple, Inc. Bluetooth[®] word mark and logos are owned by Bluetooth SIG, Inc., and any use of such marks by Nissan is under license. Bose[®] is a registered trademark of The Bose Corporation. ChromaFlair[®] is a registered trademark of Optical Coating Laboratory, LLC. EZ-Charge[®] is a registered trademark of EVgo Services. Facebook[®] is a registered trademark of Facebook, Inc. HomeLink[®] is a registered trademark of Gentex Corporation. iPhone[®] is a registered trademark of Apple, Inc. All rights reserved. iPhone[®] or other external device not included. The Sirius[®] XM,[®] and SiriusXM[®] names and all related marks and logos are trademarks of Sirius XM Radio Inc. All other trademarks are the property of their respective owners. Twitter[®] is a registered trademark of Twitter, Inc. This brochure is intended for general descriptive and informational purposes only. It is subject to change and does not constitute an offer, representation or warranty (express or implied) by Nissan North America, Inc. Interested parties should confirm the accuracy of any information in this brochure as it relates to a vehicle directly with Nissan North America, Inc. before relying on it to make a purchase decision. Nissan North America, Inc. reserves the right to make changes, at any time, without prior notice, in prices, colors, materials, equipment, specifications, and models and to discontinue models or equipment. Due to continuous product development and other pre- and post-production factors, actual vehicle, materials and specifications may vary from this brochure. Some vehicles shown with optional equipment. See the actual vehicle for complete accuracy. Availability and delivery times for particular models or equipment may vary. Specifications, options and accessories may differ in Hawaii, U.S. territories and other countries. For additional information on availability, options or accessories, see your Nissan dealer or contact Nissan North America, Inc. At [NissanUSA.com](https://www.nissanusa.com), you'll find virtual product demonstrations, a way to "build your own Nissan," a dealer locator, and more information about key Nissan support services. Or if you'd prefer, call **1-800-NISSAN-3** for answers to specific questions about the Nissan LEAF[®] or any other Nissan vehicle. The Nissan names, logos, product names, feature names, and slogans are trademarks owned by or licensed to Nissan Motor Co. Ltd. and/or its North American subsidiaries. Other trademarks and trade names are those of their respective owners. **Always wear your seat belt, and please drive responsibly.** ©2020 Nissan North America, Inc. '21 Nissan LEAF.® 2101029-N-10/20-60K-KSL