



2019  
**MAXIMA<sup>®</sup>**

Innovation  
that excites





Transform your drive from elevated to inspiring at the touch of a button. Feel 300 horsepower push you deeply into a sculpted sport seat. Experience Nissan Intelligent Mobility™ technologies that make every drive more confident, connected, and exciting.<sup>1</sup> The 2019 Maxima®. Tech that moves you.

## PURE AMBIENCE

Technically, the term is "wow". There's no better way to describe it - the perfect execution of driving function with elegance and style. The quality of materials. The ideal placement of controls. The long list of luxuries you expect - and a few you hadn't even thought of. It's clear that a great deal of time was spent, so that every moment in the new Maxima® feels special.

Semi-aniline Leather-appointed seats<sup>2</sup>

Zero Gravity Front Seats<sup>3</sup>

Climate-controlled front seats<sup>2</sup>

Dual Panel Panoramic Moonroof<sup>2</sup>

Remote Engine Start System<sup>4</sup> with Intelligent Climate Control

Heated Rear Seats<sup>2</sup>

Adjustable ambient LED lighting<sup>2</sup>

Genuine stitching on dashboard, doors, and console

Nissan Maxima® Platinum Reserve shown in Rakuda Tan Semi-aniline Leather.



### MAXIMA® SR: AN ENTHUSIAST'S WISH LIST

Start with 19" gloss black aluminum-alloy wheels, an available Dual Panel Panoramic Moonroof, and a unique sport-tuned suspension with advanced dynamic technologies. Add in a special interior with Premium Ascot Leather appointments, Alcantara® inserts on the seats and steering wheel, and "Satin Dark Chrome" faceted interior trim. The result – a driving experience that's exhilarating in every sense of the word.



**A BOLDER RIDE THROUGH LIFE** Nissan Intelligent Mobility connects you to your drive like never before. You'll make every move with greater awareness and get a little help when you need it most. In some cases, it even reinvents things – like the way you park. All of this gives you more confidence and, ultimately, the freedom to embrace the joy of being behind the wheel. This is how driving was always supposed to be.<sup>1</sup>

- Intelligent Lane Intervention<sup>2,5</sup>
- Automatic Emergency Braking with Pedestrian Detection<sup>2,6</sup>
- Rear Automatic Braking<sup>2,7</sup>
- Intelligent Around View® Monitor<sup>2,8</sup>

### CUSTOMIZED PERFORMANCE

With legendary VQ V6 power under your right foot and a next-generation CVT to keep you in the meat of the powerband, Maxima is a driver's dream come true. And with the standard Drive Mode Selector, you can switch between sport sedan and luxurious cruiser at the touch of a button.

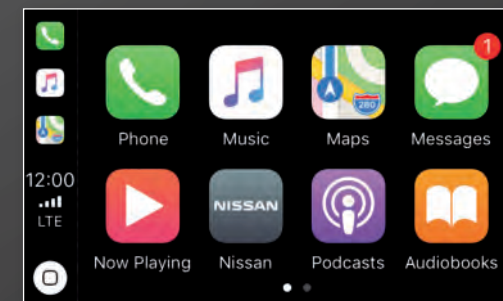
- Xtronic CVT®
- 300-hp, 3.5-L VQ V6 Engine
- Drive Mode Selector



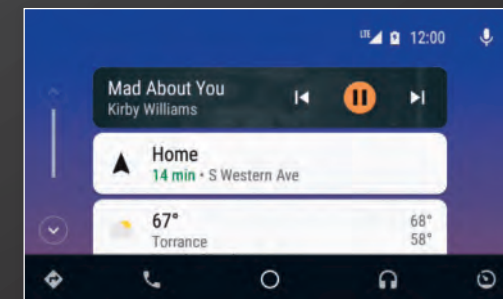
### SEAMLESS CONNECTIVITY



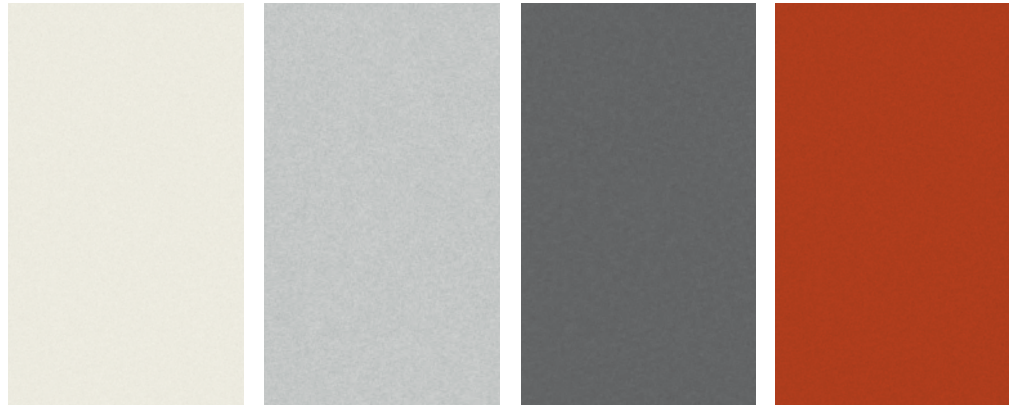
Apple CarPlay® lets you access the apps on your compatible iPhone® directly through Maxima's screen, while you take advantage of the steering wheel controls to adjust volume and toggle functions. Siri® comes along, recognizing voice commands and providing personalized music selections, directions, and more.<sup>9</sup>



Designed with safety in mind, Android Auto™ is an easy, seamless way to use your compatible phone in your Maxima. Larger touch targets, a simplified interface, and easy-to-use voice actions help minimize distraction so you can stay focused on the road.<sup>9</sup>

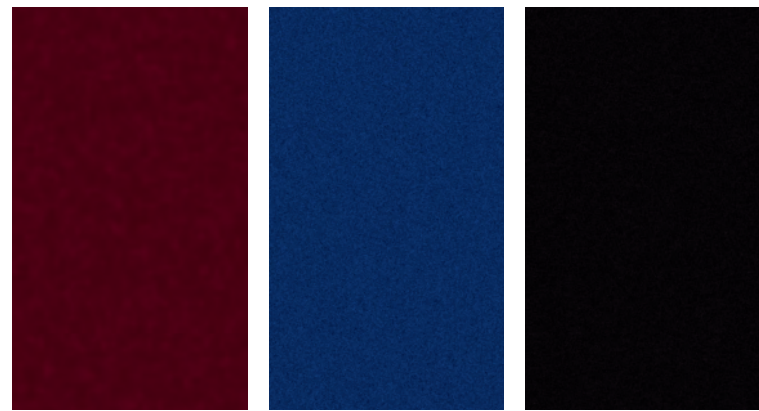


## CHOOSE YOUR COLOR



Pearl White TriCoat<sup>10</sup> Brilliant Silver Metallic Gun Metallic Sunset Drift ChromaFlair<sup>10</sup>

	S	SV	SL	SR	PLT	PR
CHARCOAL CLOTH	■					
CHARCOAL LEATHER		■	■			
CASHMERE LEATHER		■	■			
CHARCOAL PREMIUM ASCOT LEATHER WITH ALCANTARA® INSERTS				■		
CHARCOAL PREMIUM ASCOT LEATHER					■	
CASHMERE PREMIUM ASCOT LEATHER				■		
RAKUDA TAN SEMI-ANILINE LEATHER						■



Carnelian Red Tintcoat<sup>10</sup> Deep Blue Pearl Super Black

	S	SV	SL	SR	PLT	PR
CHARCOAL CLOTH	■					
CHARCOAL LEATHER		■	■			
CASHMERE LEATHER		■	■			
CHARCOAL PREMIUM ASCOT LEATHER WITH ALCANTARA® INSERTS					■	
CHARCOAL PREMIUM ASCOT LEATHER					■	
CASHMERE PREMIUM ASCOT LEATHER				■		
RAKUDA TAN SEMI-ANILINE LEATHER						■

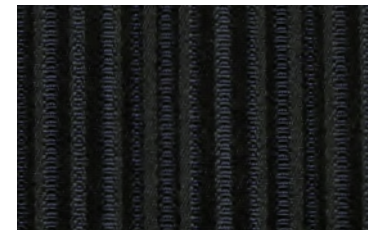
■ Standard

Nissan has taken care to ensure that the color swatches presented here are the closest possible representations of actual vehicle colors. Swatches may vary slightly due to the printing process and whether viewed in daylight, fluorescent or incandescent light. Please see the actual colors at your dealer.

## CHOOSE YOUR INTERIOR



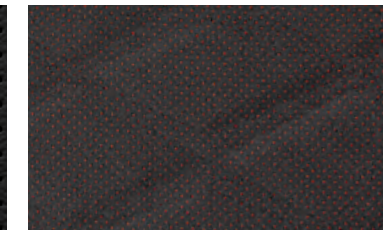
Nissan Maxima® Platinum Reserve shown in Rakuda Tan Semi-aniline Leather.



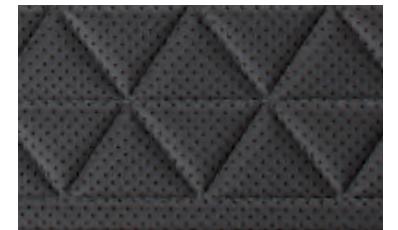
Charcoal Cloth  
S



Charcoal Leather  
SV | SL



Charcoal Premium Ascot Leather with Alcantara® Inserts  
SR



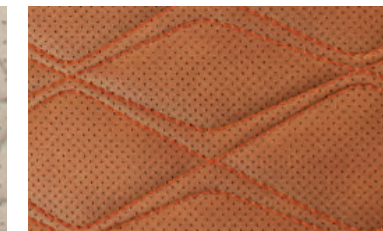
Charcoal Premium Ascot Leather Platinum



Cashmere Leather  
SV | SL



Cashmere Premium Ascot Leather Platinum



Rakuda Tan Semi-aniline Leather Platinum Reserve

## CHOOSE YOUR TRIM LEVEL & PACKAGE

**S**

- 3.5-liter V6 engine with 300 hp and 261 lb-ft of torque
- Xtronic CVT® (Continuously Variable Transmission)
- 18" Machine-finished aluminum-alloy wheels
- Drive Mode Selector with Sport or Normal modes
- LED Headlight with LED Signature Daytime Running Lights
- LED taillights with integrated LED signature
- Advanced Drive-Assist® Display<sup>12, 13</sup>
- NissanConnect® 8" touch-screen display
- Apple CarPlay<sup>9</sup>
- Android Auto™<sup>9</sup>
- Hands-free Text Messaging Assistant<sup>14</sup>
- Display Commander
- Bluetooth® Hands-Free Phone System<sup>9</sup>
- Dual Zone Automatic Temperature Control
- Auto-dimming inside rearview mirror
- Nissan Intelligent Key® with Push Button Ignition
- Remote Engine Start System<sup>4</sup> with Intelligent Climate Control
- 8-way power driver's seat
- 4-way power front-passenger's seat
- Cloth seat trim with leather-wrapped steering wheel and shift knob
- "Satin Chrome" faceted interior trim
- AM/FM/CD audio system with eight speakers
- SiriusXM® Radio with 3-month complimentary trial access<sup>9</sup>
- One USB port and one USB-C port<sup>15</sup>
- Bluetooth® streaming audio<sup>9</sup>
- Intelligent Forward Collision Warning<sup>16</sup>
- Automatic Emergency Braking<sup>6</sup>
- Tire Pressure Monitoring System (TPMS) with Easy-Fill Tire Alert<sup>17, 18</sup>
- Vehicle Dynamic Control (VDC)<sup>19</sup> with Traction Control System (TCS)
- Nissan Advanced Air Bag System<sup>20</sup>



**SV** INCLUDES S EQUIPMENT PLUS:

- Leather-appointed seats
- Heated front seats
- Power heated outside mirrors with LED turn signal indicators
- Nissan Door to Door Navigation with Premium Traffic<sup>21</sup>
- SiriusXM® Traffic and Travel Link® with 3-month complimentary trial access<sup>9</sup>
- Intelligent Cruise Control<sup>22</sup>
- Driver's seat power lumbar support
- Blind Spot Warning<sup>23</sup>
- Rear Cross Traffic Alert<sup>24</sup>



**SL** INCLUDES SV EQUIPMENT PLUS:

- Dual Panel Panoramic Moonroof with one-touch open/close
- HomeLink® Universal Transceiver
- Front and Rear Sonar System<sup>25</sup>
- Adjustable ambient LED lighting
- Front passenger's seat power lifter
- Heated steering wheel
- Bose® Premium Audio System with 11 speakers, including Bose® Centerpoint® 2 Surround Technology
- Active Noise Cancellation
- One rear USB port and one rear USB-C port<sup>15</sup>



**SR** INCLUDES SL EQUIPMENT PLUS:

- 19" Gloss black aluminum-alloy wheels
- Sport spoiler
- Paddle shifters
- Integrated Dynamics-control Module – Active Ride Control, Intelligent Trace Control,<sup>26</sup> Intelligent Engine Brake
- Sport-tuned suspension
- LED fog lights
- Traffic Sign Recognition
- High Beam Assist
- Aluminum sport pedals
- Premium Ascot Leather-appointed seats with dynamic diamond-quilted Alcantara® inserts
- Premium Ascot Leather-wrapped steering wheel with Alcantara® insert
- "Satin Dark Chrome" faceted interior trim
- Active Sound Enhancement
- Automatic Emergency Braking with Pedestrian Detection<sup>6</sup>
- Intelligent Lane Intervention<sup>5</sup>
- Deletes Dual Panel Panoramic Moonroof



**PLATINUM** INCLUDES SL EQUIPMENT PLUS:

- 19" Machine-finished aluminum-alloy wheels
- NissanConnect® Services powered by SiriusXM® with complimentary trial access to 3-year Select and 6-month Premium Plus packages<sup>9</sup>
- Intelligent Around View® Monitor<sup>8</sup>
- Power tilt/telescoping steering column
- Memory System – driver's seat, steering wheel, and outside mirrors
- Climate-controlled front seats (heated and cooled)
- Premium Ascot Leather-appointed seats with diamond-quilted leather inserts
- Premium Ascot Leather-wrapped steering wheel
- "Satin Birdseye Maple Wood" faceted interior trim
- Traffic Sign Recognition
- High Beam Assist
- Automatic Emergency Braking with Pedestrian Detection<sup>6</sup>
- Rear Automatic Braking<sup>7</sup>
- Intelligent Lane Interventions



**PLATINUM RESERVE** INCLUDES PLATINUM EQUIPMENT PLUS:

- 19" Dark hyper silver aluminum-alloy wheels
- Semi-aniline Leather-appointed seats with dynamic diamond-quilted leather inserts
- Two-tone leather-wrapped steering wheel with contrast insert
- Charcoal headliner
- "Satin Bronze" faceted interior trim
- Heated rear outboard seats

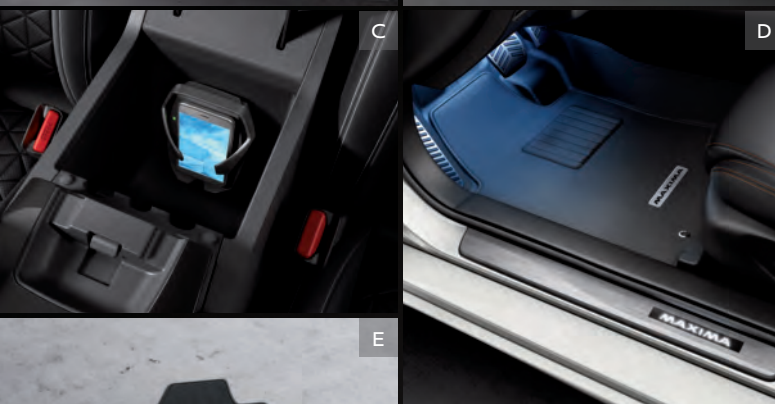


**PREMIUM PACKAGE** | SR

- Dual Panel Panoramic Moonroof with one-touch open/close
- Auto-dimming driver-side outside mirror
- Outside mirrors with reverse tilt-down feature
- Intelligent Around View Monitor<sup>8</sup>
- Memory System – driver's seat
- Rear Automatic Braking<sup>7</sup>



## CHOOSE YOUR ACCESSORIES



Every Genuine Nissan Accessory is custom-fit, custom-designed and durability-tested. Each one is backed by Nissan's 3-year/36,000-mile (whichever occurs first) limited warranty (if installed by dealer at the time of purchase), and be financed when installed by dealer at the time of purchase.<sup>27</sup>

- A. **Premium Spoiler**  
A fitting end to a breathtaking design.
- B. **18" Aluminum-alloy Wheels**  
Aggressively styled, exclusively for Maxima.<sup>®</sup>
- C. **Wireless Smartphone Charger<sup>15</sup>**  
No cable, no worries. Power up on the go.
- D. **Illuminated Kick Plates and Interior Accent Lighting**  
For a grand entrance every time. (Sold separately)
- E. **All-season Floor Mats, Sport Carpeted Floor Mats, and Carpeted Floor Mats**  
Skip the mud, and other messes. (Sold separately)
- F. **Stainless Steel Sport Pedals**  
Track-inspired grip and looks.
- G. **Nissan WiFi<sup>9</sup>**  
Get on the road and online.
- H. **Trunk Protector**  
Helps preserve and protect your cargo.

### Additional Accessories:

- Impact Sensor
- Rear USB Charging Ports<sup>15</sup>
- Interior Trim Appliqués
- Hideaway Trunk Net<sup>28</sup>
- Trunk Organizer<sup>28</sup>
- Shift Knobs
- Carpeted Trunk Mat
- Shopping Bag Hooks
- And More

## GENUINE NISSAN ACCESSORIES

# TURN BRAND-NEW INTO ALL YOU

For more information and to shop online for Maxima<sup>®</sup> Genuine Nissan Accessories, go to [bit.ly/19maxima-estore](https://bit.ly/19maxima-estore)



Nissan Maxima<sup>®</sup> SR shown in Pearl White TriCoat with Sport Spoiler (standard on SR), Splash Guards, Rocker Panel Moldings, Rear Bumper Diffuser and Exterior Ground Lighting.

## SPECIFICATIONS

Engine	S	SV	SL	SR	PLT	PR
3.5-liter DOHC 24-valve V6 engine	■	■	■	■	■	■
—Horsepower – 300 hp @ 6,400 rpm						
—Torque – 261 lb-ft @ 4,400 rpm						
Continuously Variable Valve Timing Control System (CVTCS) on intake and exhaust valves	■	■	■	■	■	■
Nissan Direct Ignition System	■	■	■	■	■	■
Electronic drive-by-wire throttle	■	■	■	■	■	■

Drivetrain						
Front engine/Front-wheel Drive	■	■	■	■	■	■
Xtronic CVT® (Continuously Variable Transmission) with Drive Mode Selector and manual mode	■	■	■	■	■	■
Paddle shifters				■		
Integrated Dynamics-control Module – Active Ride Control, Intelligent Trace Control, <sup>26</sup> Intelligent Engine Brake				■		

Brakes						
12.60" x 1.10" front and 12.13" x 0.63" rear vented discs	■	■	■	■	■	■
4-wheel Anti-lock Braking System (ABS)	■	■	■	■	■	■
Electronic Brake force Distribution (EBD)	■	■	■	■	■	■
Brake Assist <sup>29</sup>	■	■	■	■	■	■

Suspension/Chassis Bracing/Steering						
Independent strut front suspension	■	■	■	■	■	■
Independent multi-link rear suspension	■	■	■	■	■	■
Hollow-tube front and rear stabilizer bar						
Sport-tuned suspension – retuned dampers, stiffer springs and larger front stabilizer bar				■		
Front strut tower and rear chassis reinforcement	■	■	■	■	■	■
Hydro-electric power steering	■	■	■	■	■	■

Wheels/Tires						
18" x 8.0" machine-finished aluminum-alloy wheels	■	■	■			
19" x 8.5" gloss black aluminum-alloy wheels				■		
19" x 8.0" machine-finished aluminum-alloy wheels					■	
19" x 8.0" dark hyper silver aluminum-alloy wheels						■
P245/45R18 V-rated all-season tires	■	■	■			
P245/40R19 W-rated all-season tires						

Exterior Features						
LED headlights with LED signature Daytime Running Lights	■	■	■	■	■	■
Intelligent Auto Headlights	■	■	■	■	■	■
LED fog lights				■	■	■
LED taillights with integrated LED signature	■	■	■	■	■	■
Quad-tipped exhaust finishers	■	■	■	■	■	■
Sport spoiler				■		
Dual power outside mirrors	■					
Power heated outside mirrors with LED turn signal indicators		■	■	■	■	■

■ Standard P Part of SR Premium Package

Exterior Features (continued)	S	SV	SL	SR	PLT	PR
Outside mirrors with reverse tilt-down feature				P	■	■
Auto-dimming driver-side outside mirror				P	■	■
Dual Panel Panoramic Moonroof			■	P	■	■

Comfort/Convenience						
Advanced Drive-Assist® Display <sup>12, 13</sup>	■	■	■	■	■	■
NissanConnect® 8" touch-screen display <sup>9</sup>	■	■	■	■	■	■
Nissan Door to Door Navigation with Premium Traffic <sup>21</sup>		■	■	■	■	■
NissanConnect® Services powered by SiriusXM® with complimentary trial access to 3-year Select and 6-month Premium Plus packages <sup>9</sup>					■	■
Apple CarPlay <sup>99</sup>	■	■	■	■	■	■
Android Auto™ <sup>9</sup>	■	■	■	■	■	■
SiriusXM® Traffic and Travel Link® with 3-month complimentary trial access <sup>9</sup>		■	■	■	■	■
Hands-free Text Messaging Assistant <sup>14</sup>	■	■	■	■	■	■
Display Commander	■	■	■	■	■	■
RearView Monitor <sup>30</sup>	■	■	■	■		
Intelligent Around View® Monitor <sup>8</sup>				P	■	■
Front and Rear Sonar System <sup>25</sup>			■	■	■	■
Bluetooth® Hands-free Phone System <sup>9</sup>	■	■	■	■	■	■
Dual Zone Automatic Temperature Control with in-cabin microfilter and rear vents	■	■	■	■	■	■
HomeLink® Universal Transceiver			■	■	■	■
Cruise control	■					
Intelligent Cruise Control <sup>22</sup>		■	■	■	■	■
Intelligent Driver Alertness <sup>31</sup>	■	■	■	■	■	■
Rear Door Alert <sup>32</sup>	■	■	■	■	■	■
Traffic Sign Recognition			■	■	■	■
High Beam Assist				■	■	■
Auto-dimming inside rearview mirror	■	■	■	■	■	■
Nissan Intelligent Key® with Push Button Ignition	■	■	■	■	■	■
Remote Engine Start System <sup>4</sup> with Intelligent Climate Control	■	■	■	■	■	■
Power-tilt/telescoping steering column					■	■
Rain-sensing variable intermittent windshield wipers					■	■
Adjustable ambient LED lighting			■		■	■
Rear-window power sunshade					■	■

Seating/Appointments						
8-way power driver's seat	■	■	■	■	■	■
4-way power front-passenger's seat	■	■	■	■	■	■
Memory System – driver's seat				P		
Memory System – driver's seat, steering wheel, and outside mirrors					■	■
Driver's seat power lumbar support		■	■	■	■	■
Driver's seat manual thigh support extension			■	■	■	■
Front passenger's seat power lifter					■	■
Heated front seats		■	■			
Climate-controlled front seats (heated and cooled)				■	■	■
Heated steering wheel					■	■
Heated rear outboard seats						■
60/40 Split fold-down rear seatbacks	■	■	■	■	■	■
Leather-appointed seats		■	■			

Seating/Appointments (continued)	S	SV	SL	SR	PLT	PR
Premium Ascot Leather-appointed seats with dynamic diamond-quilted Alcantara® inserts				■		
Premium Ascot Leather-appointed seats with diamond-quilted leather inserts					■	
Semi-aniline Leather-appointed seats with dynamic diamond-quilted leather inserts						■
Leather-wrapped steering wheel	■	■	■			
Premium Ascot Leather-wrapped steering wheel with Alcantara® insert				■		
Premium Ascot Leather-wrapped steering wheel					■	
Two-tone leather-wrapped steering wheel with contrast insert						■
Leather-wrapped shift knob	■	■	■	■	■	■
"Satin Chrome" faceted interior trim	■	■	■			
"Satin Dark Chrome" faceted interior trim				■		
"Satin Birdseye Maple Wood" faceted interior trim					■	
"Satin Bronze" faceted interior trim						■
Charcoal headliner				■		■
Aluminum sport pedals				■		

Audio/Entertainment						
AM/FM/CD audio system with eight speakers	■	■				
Bose® Premium Audio System with 11 speakers, including Bose® Centerpoint® 2 Surround Technology			■	■	■	■
Active Noise Cancellation			■	■	■	■
Active Sound Enhancement				■		
One USB port and one USB-C port <sup>15</sup>	■	■				
Two USB ports and two USB-C ports <sup>15</sup>			■	■	■	■
SiriusXM® Radio with 3-month complimentary trial access <sup>9</sup>	■	■	■	■	■	■
HD Radio®		■	■	■	■	■
Bluetooth® streaming audio <sup>9</sup>	■	■	■	■	■	■

Safety/Security						
Nissan Advanced Air Bag System with supplemental front air bags with seat belt and occupant-classification sensors <sup>20</sup>	■	■	■	■	■	■
Seat-mounted side-impact supplemental air bags for front- and rear-seat outboard occupants <sup>20</sup>	■	■	■	■	■	■
Driver and front-passenger knee supplemental air bags <sup>20</sup>	■	■	■	■	■	■
Roof-mounted curtain supplemental air bags with rollover sensor for side-impact and rollover head protection for front and rear-seat outboard occupants <sup>20</sup>	■	■	■	■	■	■
Vehicle Dynamic Control (VDC) <sup>19</sup> with Traction Control System (TCS)	■	■	■	■	■	■
Intelligent Forward Collision Warning <sup>16</sup>	■	■	■			
Automatic Emergency Braking <sup>6</sup>				■	■	■
Automatic Emergency Braking with Pedestrian Detection <sup>6</sup>					■	■
Blind Spot Warning <sup>23</sup>		■	■	■	■	■
Rear Cross Traffic Alert <sup>24</sup>		■	■	■	■	■
Intelligent Lane Intervention <sup>5</sup>				■	■	■
Rear Automatic Braking <sup>7</sup>				P	■	■
LATCH System (Lower Anchors and Tethers for CHildren)	■	■	■	■	■	■
Tire Pressure Monitoring System (TPMS) with Easy-Fill Tire Alert <sup>17, 18</sup>	■	■	■	■	■	■

## DIMENSIONS/CAPACITIES/WEIGHTS/MPG

Exterior Dimensions – Inches	
<b>Exterior</b>	
Wheelbase	109.3
Overall length/width/height	192.8/73.2/56.5

Interior Dimensions – Inches	
<b>Interior</b>	
Head room (front/rear)	39.4/36.7
Head room with Dual Panel Moonroof (front/rear)	38.9/35.8
Leg room (front/rear)	45.0/34.2
Hip room (front/rear)	54.2/53.5
Shoulder room (front/rear)	56.7/55.7

Capacities	
Seating capacity	5
EPA interior passenger volume without moonroof (cu. ft.)	98.5
EPA interior passenger volume with moonroof (cu. ft.)	96.4
EPA cargo volume (cu. ft.)	14.3
Fuel tank (gals.)	18.0

Curb Weights						
	S	SV	SL	SR	PLT	PR
	3,552	3,565	3,648	3,582	3,676	3,676

2019 EPA Fuel Economy Estimates <sup>33</sup>						
City/Highway/Combined MPG	S	SV	SL	SR	PLT	PR
	20/30/24	20/30/24	20/30/24	20/30/24	20/30/24	20/30/24

## NISSAN ROADSIDE ASSISTANCE

Your peace of mind is on us. For 36 months or 36,000 miles, whichever comes first, your new Nissan vehicle is covered for the following:<sup>34</sup>

- Flat-tire changes
- Trip Interruption benefits
- Jump starts
- Vehicle lockouts
- Emergency fuel delivery

Follow Nissan on:



visit [NissanUSA.com/maxima](https://www.nissanusa.com/maxima)

PRINTED IN USA

# NISSAN INTELLIGENT MOBILITY™

Nissan Intelligent Mobility guides everything we do. We're using new technologies to transform cars from mere driving machines into assistants. Together the journey is more confident, connected, and exciting. Whether it's cars that assist in the driving task, or highways that charge your EV as you go along, it's all in the very near future. And it's a future already taking shape in the Nissan you drive today.

## SEE MAXIMA® COME TO LIFE

Go to [NissanUSA.com](http://NissanUSA.com) and find an interactive brochure for Maxima and every Nissan in the lineup. Available on desktop, smartphone, or tablet, it's the full product story - including demos, videos, and complete info on trims, colors, and accessories.



<sup>1</sup>Availability of features vary by vehicle model year, model, trim level, packaging, and options. <sup>2</sup>Available feature(s). <sup>3</sup>Zero Gravity seats for outboard passengers only. <sup>4</sup>State laws may apply. Review before using. <sup>5</sup>Intelligent Lane Intervention only operates when lane markings are detectable. See Owner's Manual for safety information. <sup>6</sup>Automatic Emergency Braking and Automatic Emergency Braking with Pedestrian Detection cannot prevent all collisions and may not provide warning or braking in all conditions. Driver should monitor traffic conditions and brake as needed to prevent collisions. See Owner's Manual for safety information. <sup>7</sup>Rear Automatic Braking cannot prevent all collisions and may not provide warning or braking in all conditions. Driver should monitor traffic conditions and brake as needed to prevent collisions. See Owner's Manual for safety information. <sup>8</sup>Intelligent Around View® Monitor cannot eliminate blind spots and may not detect every object. Driver should always turn and check surroundings before driving. See Owner's Manual for safety information. <sup>9</sup>Available services/features may be shown. Compatible connected device may be required. Only use services/features and device when safe and legal to do so. Subject to GPS and wireless network availability and connection, and system/technology limitations. Text rates/data usage/subscription may apply. Some services/features provided by companies not within Nissan or its partners' or agents' control and may be discontinued at any time. For more information, see dealer, Owner's Manual, or [NissanUSA.com/connect/important-information](http://NissanUSA.com/connect/important-information). <sup>10</sup>Extra cost option. <sup>11</sup>Limited availability. <sup>12</sup>Driving is serious business and requires your full attention. If you have to use the feature while driving, exercise extreme caution at all times so full attention may be given to vehicle operation. <sup>13</sup>Information displayed is dependent on how vehicle is equipped. <sup>14</sup>Use Hands Free Text Messaging when parked in a safe location. If you must use while driving, monitor traffic conditions and keep both hands on the steering wheel to prevent collisions. Compatible device required. Message and data rates may apply. <sup>15</sup>Driving is serious business and requires your full attention. If you have to use the connected device while driving, exercise extreme caution at all times so full attention may be given to vehicle operation. <sup>16</sup>Intelligent Forward Collision Warning cannot prevent collisions. See Owner's Manual for safety information. <sup>17</sup>Tire Pressure Monitoring System is not a substitute for regular tire pressure checks. See Owner's Manual for safety information. <sup>18</sup>Vehicle must be on for the Easy-Fill Tire Alert to operate. <sup>19</sup>Vehicle Dynamic Control cannot prevent collisions due to abrupt steering, carelessness, or dangerous driving techniques. It should remain on when driving, except when freeing the vehicle from mud or snow. See Owner's Manual for safety information. <sup>20</sup>Air bags are only a supplemental restraint system. Always wear your seat belt. Rear-facing child restraints should not be placed in the front-passenger's seat. All children 12 and under should ride in the rear seat properly secured in child restraints, booster seats, or seat belts according to their size. Air bags will only inflate in certain accidents. See Owner's Manual for safety information. <sup>21</sup>Never program while driving. GPS mapping may not be detailed in all areas or reflect current road status. <sup>22</sup>Intelligent Cruise Control uses limited braking and is not a collision avoidance or warning system. Driver should monitor traffic conditions and brake as needed to prevent collisions. See Owner's Manual for safety information. <sup>23</sup>Blind Spot Warning cannot prevent collisions and may not detect every object or warn in all situations. Driver should always turn and look before changing lanes. See Owner's Manual for safety information. <sup>24</sup>Rear Cross Traffic Alert may not detect all vehicles. See Owner's Manual for safety information. <sup>25</sup>Sonar System may not detect every object. Driver should always check surroundings before driving. See Owner's Manual for safety information. <sup>26</sup>Intelligent Trace Control cannot prevent collisions or loss of control. Driver should remain in control of vehicle at all times. See Owner's Manual for safety information. <sup>27</sup>Genuine Nissan Accessories are covered by Nissan's Limited Warranty on Genuine Nissan Replacement Parts, Genuine NISMO® S-Tune Parts, and Genuine Nissan Accessories for the longer of 12 months/12,000 miles (whichever occurs first) or the remaining period under the 3-year/36,000-mile (whichever occurs first) Nissan New Vehicle Limited Warranty. Terms and conditions apply. See dealer, Warranty Information Booklet, or [parts.NissanUSA.com](http://parts.NissanUSA.com) for details. <sup>28</sup>Cargo shown for display purposes only. Cargo and load capacity limited by weight and distribution. Always secure cargo. <sup>29</sup>Brake Assist cannot prevent all collisions and may not provide warning or braking in all conditions. Driver should monitor traffic conditions and brake as needed to prevent collisions. See Owner's Manual for safety information. <sup>30</sup>RearView Monitor may not detect every object and does not eliminate blind spots or warn of moving objects. See Owner's Manual for safety information. <sup>31</sup>Intelligent Driver Alertness cannot provide a warning in every situation. See Owner's Manual for safety information. <sup>32</sup>See Owner's Manual for safety information. <sup>33</sup>2019 EPA Fuel Economy Estimates 21/30/25 (City/Highway/Combined). Actual mileage may vary with driving conditions. Use for comparison only. <sup>34</sup>For a period of 36 months/36,000 miles from the date the vehicle is delivered to the first retail buyer or otherwise put into use, whichever is earlier. Alcantara® is a registered trademark of Alcantara S.p.A. Corporation. Android® and Android Auto™ are trademarks of Google LLC. Apple CarPlay® is a registered trademark of Apple, Inc. Bluetooth® word mark and logos are owned by Bluetooth SIG, Inc. Bose® and Centerpoint® are registered trademarks of The Bose Corporation. ChromaFlair® is a registered trademark of Optical Coating Laboratory, LLC. Facebook® is a registered trademark of Facebook, Inc. HomeLink® is a registered trademark of Gentex Corporation. iPhone® is a registered trademark of Apple, Inc. All rights reserved. Pandora® is a registered trademark of Pandora Media. The Sirius®, XM®, and SiriusXM® names and all related marks and logos are trademarks of Sirius XM Radio Inc. Twitter® is a registered trademark of Twitter, Inc. YouTube® is a registered trademark of Google LLC. This brochure is intended for general descriptive and informational purposes only. It is subject to change and does not constitute an offer, representation or warranty (express or implied) by Nissan North America, Inc. Interested parties should confirm the accuracy of any information in this brochure as it relates to a vehicle directly with Nissan North America, Inc. before relying on it to make a purchase decision. Nissan North America, Inc. reserves the right to make changes at any time, without prior notice, in prices, colors, materials, equipment, specifications, and models and to discontinue models or equipment. Due to continuous product development and other pre- and post-production factors, actual vehicle, materials and specifications may vary from this brochure. Some vehicles shown with optional equipment. See the actual vehicle for complete accuracy. Availability and delivery times for particular models or equipment may vary. Specifications, options and accessories may differ in Hawaii, U.S. territories and other countries. For additional information on availability, options or accessories, see your Nissan dealer or contact Nissan North America, Inc. at [NissanUSA.com](http://NissanUSA.com), you'll find virtual product demonstrations, a way to "build your own Nissan," a dealer locator, and more information about key Nissan support services. Or if you'd prefer, call 1-800-NISSAN-3 for answers to specific questions about Maxima® or any other Nissan vehicle. The Nissan names, logos, product names, feature names, and slogans are trademarks owned by or licensed to Nissan Motor Co. Ltd. and/or its North American subsidiaries. Other trademarks and trade names are those of their respective owners. **Always wear your seat belt, and please drive responsibly.** ©2019 Nissan North America, Inc. <sup>19</sup> Maxima® 1822575-N-01/19-75M-CGI