

2021

MAXIMA®





Welcome to exhilaration, 40 years in the making. The 4-Door Sports Car.® A high-tech powerhouse that changes from premium ride to canyon carver at the touch of a button. Loaded with available advanced driver assist features and seamless connectivity with your compatible smartphone.¹ This is what it's like to drive a living legend. This is Nissan Intelligent Mobility.²



Exclusive design

Welcome to a new level of premium. Celebrating four decades of inspired driving, the interior of the limited-availability 40th Anniversary Edition is visually breathtaking.³ From exclusive red leather diamond-quilted inserts and an embossed logo to a unique leather-wrapped steering wheel with contrasting stitching. Heritage white gauge faces meeting modern Satin Dark Chrome faceted interior trim. A charcoal headliner that creates an intimate cabin. All so you feel like the Maxima's cabin was made especially for you.

Red Semi-aniline Leather-appointed seats⁴

Zero Gravity Front Seats⁵

Climate-controlled front seats⁴

Dual Panel Panoramic Moonroof⁴

Remote Engine Start System⁶ with Intelligent Climate Control

Heated steering wheel⁴

Ambient LED lighting⁴

Contrast stitching on dashboard, doors and console



Maxima® SR

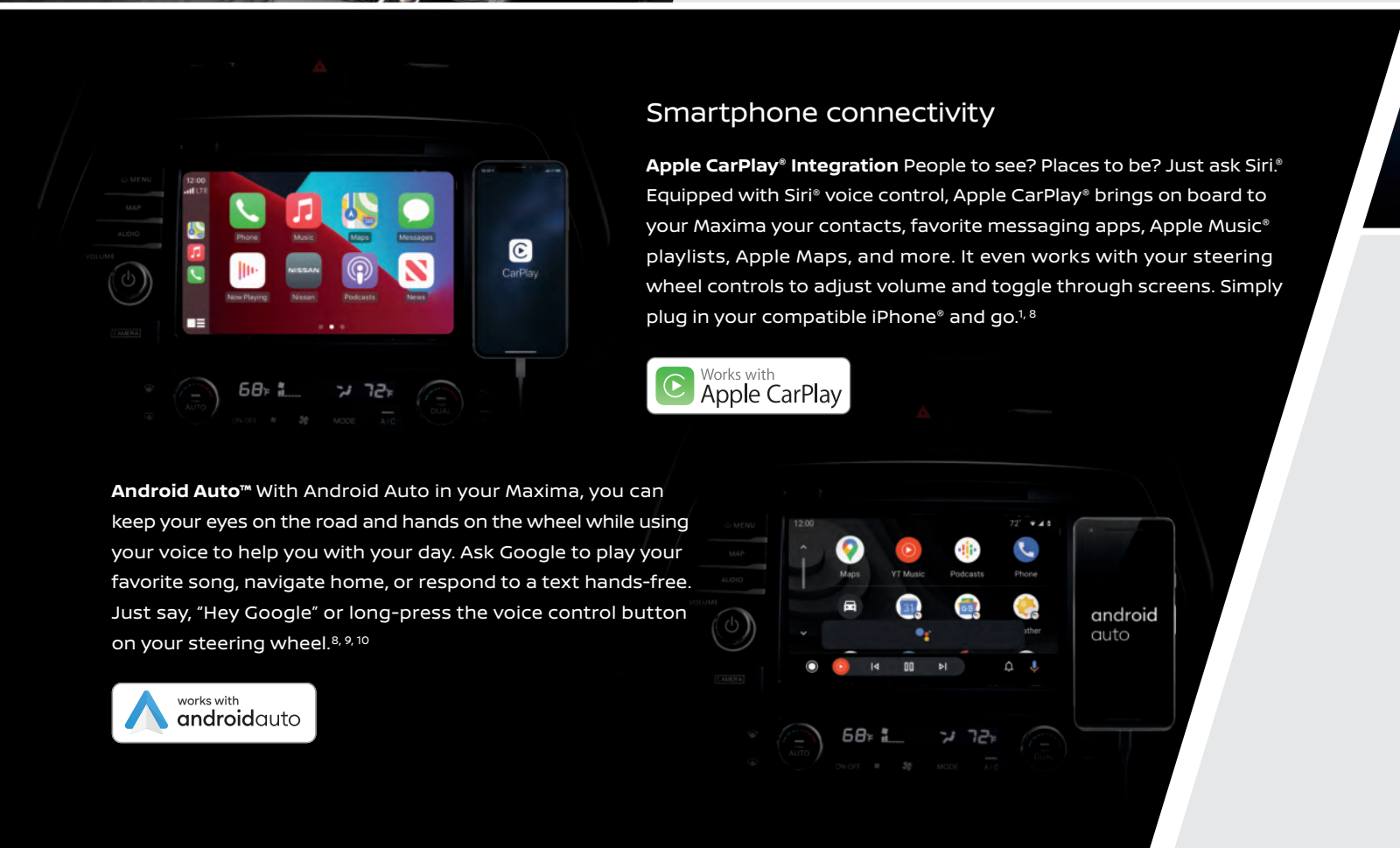
Start with 19" gloss black aluminum-alloy wheels, a Dual Panel Panoramic Moonroof, and a unique sport-tuned suspension with advanced dynamic technologies. Add in a special interior with Premium Ascot Leather appointments, Alcantara® inserts on the seats and steering wheel, and Satin Dark Chrome faceted interior trim. The result - a driving experience that's exhilarating in every sense of the word.



Nissan Safety Shield® 360

Imagine being surrounded by confidence on every drive. Part of Nissan Intelligent Mobility, Safety Shield 360 includes features that monitor in front of you, behind you, and on either side, and can step in to help keep you safe. The following features come standard on every 2021 Nissan Maxima.^{2, 11}

- Automatic Emergency Braking with Pedestrian Detection¹²
- Rear Automatic Braking¹³
- Rear Cross Traffic Alert¹⁴
- Blind Spot Warning¹⁵
- Lane Departure Warning¹⁶
- High Beam Assist



Smartphone connectivity

Apple CarPlay® Integration People to see? Places to be? Just ask Siri.® Equipped with Siri® voice control, Apple CarPlay® brings on board to your Maxima your contacts, favorite messaging apps, Apple Music® playlists, Apple Maps, and more. It even works with your steering wheel controls to adjust volume and toggle through screens. Simply plug in your compatible iPhone® and go.^{1, 8}



Android Auto™ With Android Auto in your Maxima, you can keep your eyes on the road and hands on the wheel while using your voice to help you with your day. Ask Google to play your favorite song, navigate home, or respond to a text hands-free. Just say, "Hey Google" or long-press the voice control button on your steering wheel.^{8, 9, 10}



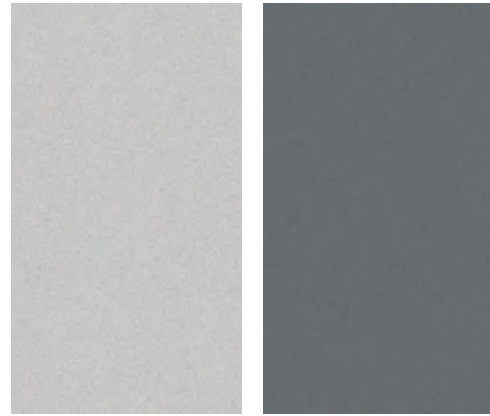
Customized performance

With legendary VQ V6 power under your right foot and an Xtronic CVT® (Continuously Variable Transmission) to keep you in the meat of the powerband, Maxima is a driver's dream come true. And with the standard Drive Mode Selector, you can switch between sport sedan and luxurious cruiser at the touch of a button.

- Xtronic CVT®
- 300-hp, 3.5-L VQ V6 Engine
- Drive Mode Selector



CHOOSE YOUR COLOR



Pearl White TriCoat¹⁷

Brilliant Silver Metallic

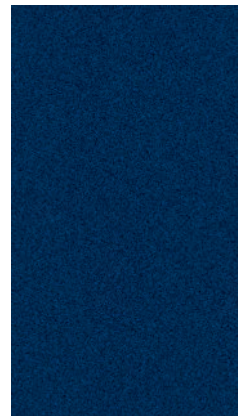
Gun Metallic

Sunset Drift ChromaFlair¹⁷

	SV	SR	PLT	40TH	SV	SR	PLT	40TH	SV	SR	PLT	40TH	SV	SR	PLT	40TH
CHARCOAL LEATHER ⁷	<input checked="" type="checkbox"/>				<input checked="" type="checkbox"/>											
CASHMERE LEATHER ⁷	<input checked="" type="checkbox"/>				<input checked="" type="checkbox"/>											
CHARCOAL PREMIUM ASCOT LEATHER WITH ALCANTARA [®] INSERTS ⁷		<input checked="" type="checkbox"/>					<input checked="" type="checkbox"/>				<input checked="" type="checkbox"/>					
CHARCOAL PREMIUM ASCOT LEATHER ⁷			<input checked="" type="checkbox"/>				<input checked="" type="checkbox"/>				<input checked="" type="checkbox"/>					
CASHMERE PREMIUM ASCOT LEATHER ⁷			<input checked="" type="checkbox"/>				<input checked="" type="checkbox"/>				<input checked="" type="checkbox"/>					
RED SEMI-ANILINE LEATHER ⁷																<input checked="" type="checkbox"/>



Carnelian Red Tintcoat¹⁷



Deep Blue Pearl



Super Black

Two-tone Ruby Slate Gray Pearl / Super Black

	SV	SR	PLT	40TH	SV	SR	PLT	40TH	SV	SR	PLT	40TH	SV	SR	PLT	40TH
CHARCOAL LEATHER ⁷	<input checked="" type="checkbox"/>				<input checked="" type="checkbox"/>											
CASHMERE LEATHER ⁷	<input checked="" type="checkbox"/>				<input checked="" type="checkbox"/>											
CHARCOAL PREMIUM ASCOT LEATHER WITH ALCANTARA [®] INSERTS ⁷		<input checked="" type="checkbox"/>					<input checked="" type="checkbox"/>				<input checked="" type="checkbox"/>					
CHARCOAL PREMIUM ASCOT LEATHER ⁷			<input checked="" type="checkbox"/>				<input checked="" type="checkbox"/>				<input checked="" type="checkbox"/>					
CASHMERE PREMIUM ASCOT LEATHER ⁷			<input checked="" type="checkbox"/>				<input checked="" type="checkbox"/>				<input checked="" type="checkbox"/>					
RED SEMI-ANILINE LEATHER ⁷																<input checked="" type="checkbox"/>

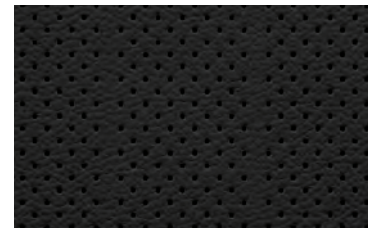
■ Standard

Nissan has taken care to ensure that the color swatches presented here are the closest possible representations of actual vehicle colors. Swatches may vary slightly due to the printing process and whether viewed in daylight, fluorescent or incandescent light. Please see the actual colors at your dealer.

CHOOSE YOUR INTERIOR



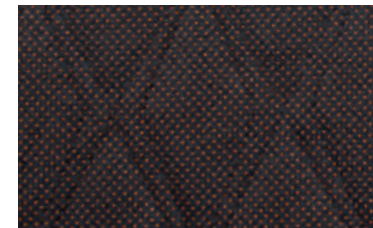
Nissan Maxima[®] Platinum shown in Cashmere Premium Ascot Leather.⁷



Charcoal Leather⁷
SV



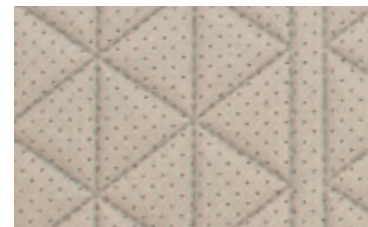
Cashmere Leather⁷
SV



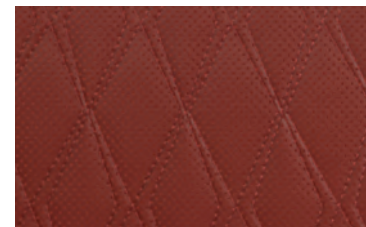
Charcoal Premium Ascot Leather with Alcantara[®] Inserts⁷
SR



Charcoal Premium Ascot Leather⁷
Platinum



Cashmere Premium Ascot Leather⁷
Platinum



Red Semi-aniline Leather⁷
40th Anniversary Edition³

CHOOSE YOUR TRIM LEVEL

SV

- 3.5-liter DOHC 24-valve V6 engine
- 300 hp and 261 lb-ft of torque
- Continuously Variable Valve Timing Control System (CVTCS) on intake and exhaust valves
- Xtronic CVT® (Continuously Variable Transmission) with Drive Mode Selector
- Brake Assist¹⁸
- Intelligent Cruise Control¹⁹
- Intelligent Forward Collision Warning²⁰
- Automatic Emergency Braking with Pedestrian Detection¹²
- Lane Departure Warning¹⁶
- Blind Spot Warning¹⁵
- Rear Cross Traffic Alert¹⁴
- Rear Automatic Braking¹³
- RearView Monitor²¹
- Rear Sonar System²²
- Vehicle Dynamic Control (VDC)²³ with Traction Control System (TCS)
- Integrated Dynamics-control Module - Active Ride Control, Intelligent Trace Control,²⁴ Intelligent Engine Brake
- High Beam Assist
- Traffic Sign Recognition²⁵
- Intelligent Driver Alertness²⁶
- 18" x 8.0" Machine-finished aluminum-alloy wheels
- LED headlights with LED signature Daytime Running Lights
- Taillights with integrated LED signature
- Intelligent Auto Headlights
- Dual power heated outside mirrors with LED turn signal indicators
- Chrome quad-tipped exhaust finishers
- Dual Zone Automatic Temperature Control with rear vents
- Auto-dimming inside rearview mirror
- Nissan Intelligent Key® with Push Button Ignition
- Remote Engine Start System⁶ with Intelligent Climate Control
- Remote front windows down and trunk release via Nissan Intelligent Key®
- Vehicle-speed-sensing variable intermittent windshield wipers
- Rear Door Alert²⁷
- 8-way power driver's seat with power lumbar support
- 4-way power front-passenger's seat
- Heated front seats
- 60/40-split fold-down rear seatbacks
- Leather-appointed seats
- Leather-wrapped steering wheel and shift knob
- Satin Chrome faceted interior trim
- Advanced Drive-Assist® Display^{28, 29}
- NissanConnect® 8" touch-screen display⁸
- Nissan Door to Door Navigation⁹
- NissanConnect® Services powered by SiriusXM® with trial access to 5-year Select, Plus and 6-month Premium packages⁸
- NissanConnect® with Wi-Fi Hotspot⁸
- SiriusXM® Traffic and Travel Link with 3-month trial access⁸
- Apple CarPlay® integration⁸
- Android Auto™⁸
- Bluetooth® Hands-free Phone System⁸
- Hands-free Text Messaging Assistant¹⁰
- Display Commander
- AM/FM/CD audio system with eight speakers
- MP3/WMA CD playback capability
- Auxiliary audio input jack¹
- One USB port and one USB-C port¹
- SiriusXM® Radio with 3-month subscription included⁸
- Streaming Audio via Bluetooth®⁸
- Radio Data System (RDS) and speed-sensitive volume control
- Tire Pressure Monitoring System (TPMS) with Easy-Fill Tire Alert^{30, 31}



SR

INCLUDES SV EQUIPMENT PLUS:

- Paddle shifters
- Sport-tuned suspension with retuned dampers, stiffer springs and larger front stabilizer bar
- Intelligent Lane Intervention¹⁶
- Intelligent Around View® Monitor³²
- Front and Rear Sonar System²²
- 19" x 8.5" Gloss black aluminum-alloy wheels
- LED fog lights
- Black V-Motion grille
- Black exterior accents
- Outside mirrors with reverse tilt-down feature
- Auto-dimming driver-side outside mirror
- Dual Panel Panoramic Moonroof
- Black quad-tipped exhaust finishers
- Sport spoiler
- HomeLink® Universal Transceiver
- Adjustable ambient LED lighting
- Memory System - driver's seat and outside mirrors
- Driver's seat manual thigh support extension
- Front-passenger's seat power lifter
- Climate-controlled front seats (heated and cooled)
- Heated steering wheel
- Premium Ascot Leather-appointed seats with dynamic diamond-quilted Alcantara® inserts
- Premium Ascot Leather-wrapped steering wheel with Alcantara® inserts
- Satin Dark Chrome faceted interior trim
- Aluminum sport pedals
- Charcoal headliner
- Bose Premium Audio System with 11 speakers, including Centerpoint 2 surround technology
- Active Noise Cancellation
- Active Sound Enhancement
- Two USB ports and two USB-C ports¹



PLATINUM

INCLUDES SR EQUIPMENT PLUS:

- 19" x 8.0" Machine-finished aluminum-alloy wheels
- Power-tilt/telescoping steering column
- Rain-sensing variable intermittent windshield wipers
- Rear-window power sunshade
- Memory System - driver's seat, steering wheel and outside mirrors
- Premium Ascot Leather-appointed seats with diamond-quilted leather inserts
- Premium Ascot Leather-wrapped steering wheel
- Satin Birdseye Maple Wood faceted interior trim



40TH ANNIVERSARY EDITION³

INCLUDES PLATINUM EQUIPMENT PLUS:

- 19" x 8.0" 40th Anniversary Edition gloss black aluminum-alloy wheels
- Black V-Motion grille
- Black exterior accents
- Black badging
- 40th Anniversary Edition badge
- Black quad-tipped exhaust finishers
- Heated rear seats
- 40th Anniversary Edition semi-aniline Leather-appointed seats with dynamic diamond-quilted leather inserts with embossing
- 40th Anniversary Edition Leather-wrapped steering wheel with contrast stitching
- Satin Bronze faceted interior trim
- White gauge faces
- Charcoal headliner



CHOOSE YOUR ACCESSORIES



A



B



C



D



E



F



G



H

A. Premium Spoiler

A fitting end to a breathtaking design.

B. 18" Aluminum-alloy Wheels

Aggressively styled, exclusively for Maxima®.

C. Dual Rear USB Charging Ports¹

Charge up with USB and state-of-the-art USB-C.

D. Illuminated Kick Plates, Interior Accent Lighting

Creates a special ambiance every time. (Sold separately)

E. All-Season Floor Mats, Sport Carpeted Floor Mats, and Carpeted Floor Mats

Skip the mud, and other messes. (Sold separately)

F. Stainless Steel Sport Pedals

Track-inspired grip and looks.

G. Impact Sensor

Chirps if bumped. Sounds alarm if wheel theft or break-in is detected.

H. All-Season Trunk Area Protector³⁴

Helps preserve and protect your cargo.

Additional Accessories:

- Interior Trim Appliqués
- Interior Accent Lighting
- Hideaway Trunk Net³⁴
- Portable Trunk Organizer³⁴
- Sliding Trunk Organizer Tray³⁴
- Shift Knobs
- Carpeted Trunk Area Protector
- Shopping Bag Hooks
- Interior Accent Lighting
- And More

For more information and to shop online for Maxima® Genuine Nissan Accessories, go to bit.ly/21Maxima-Accys

GENUINE NISSAN ACCESSORIES

Turn brand-new into all you

Every Genuine Nissan Accessory is custom-fit, custom-designed and durability-tested. Each one is backed by Nissan's 3-year/36,000-mile (whichever occurs first) limited warranty (if installed by dealer at the time of purchase), and can be financed when installed by dealer at time of purchase.³³



Nissan Maxima® SR shown in Pearl White TriCoat with Sport Spoiler (standard on SR), Splash Guards, Rocker Panel Moldings, and Rear Bumper Diffuser.

SPECIFICATIONS

Engine	SV	SR	Platinum	40th Anniversary Edition ¹
3.5-liter DOHC 24-valve V6 engine	■	■	■	■
300 hp @ 6,400 rpm				
261 lb-ft of torque @ 4,400 rpm				
Continuously Variable Valve Timing Control System (CVTCS) on intake and exhaust valves	■	■	■	■
Nissan Direct Ignition System	■	■	■	■
Electronic drive-by-wire throttle	■	■	■	■

Drivetrain	SV	SR	Platinum	40th Anniversary Edition ¹
Front engine/Front-Wheel Drive	■	■	■	■
Xtronic CVT [®] (Continuously Variable Transmission) with Drive Mode Selector	■	■	■	■
Paddle shifters		■		

Brakes	SV	SR	Platinum	40th Anniversary Edition ¹
Front and rear vented discs	■	■	■	■
4-wheel Anti-lock Braking System (ABS)	■	■	■	■
Electronic Brake force Distribution (EBD)	■	■	■	■
Brake Assist ¹⁸	■	■	■	■

Suspension/Steering	SV	SR	Platinum	40th Anniversary Edition ¹
Independent strut front and multi-link rear suspension	■	■	■	■
Front and rear stabilizer bars	■	■	■	■
Sport-tuned suspension with retuned dampers, stiffer springs and larger front stabilizer bar		■		
Hydro-electric power steering	■	■	■	■

Driver Assistance Technologies	SV	SR	Platinum	40th Anniversary Edition ¹
Intelligent Cruise Control ¹⁹	■	■	■	■
Intelligent Forward Collision Warning ²⁰	■	■	■	■
Automatic Emergency Braking with Pedestrian Detection ¹²	■	■	■	■
Lane Departure Warning ¹⁶	■			
Intelligent Lane Intervention ¹⁶	■	■	■	■
Blind Spot Warning ¹⁵	■	■	■	■
Rear Cross Traffic Alert ¹⁴	■	■	■	■
Rear Automatic Braking ¹³	■	■	■	■
RearView Monitor ²¹	■			
Intelligent Around View [®] Monitor ³²	■	■	■	■
Rear Sonar System ²²		■	■	■
Front and Rear Sonar System ²²		■	■	■
Vehicle Dynamic Control (VDC) ²³ with Traction Control System (TCS)	■	■	■	■
Integrated Dynamics-control Module - Active Ride Control, Intelligent Trace Control, ²⁴ Intelligent Engine Brake	■	■	■	■
High Beam Assist	■	■	■	■
Traffic Sign Recognition ²⁵	■	■	■	■
Intelligent Driver Alertness ²⁶	■	■	■	■

Wheels/Tires	SV	SR	Platinum	40th Anniversary Edition ¹
18" x 8.0" machine-finished aluminum-alloy wheels	■			
19" x 8.5" gloss black aluminum-alloy wheels		■		
19" x 8.0" machine-finished aluminum-alloy wheels			■	
19" x 8.0" 40th Anniversary Edition gloss black aluminum-alloy wheels			40th	■

■ Standard **40th** 40th Anniversary Edition Package³

Wheels/Tires (continued)	SV	SR	Platinum	40th Anniversary Edition ¹
P245/45R18 V-rated all-season tires	■			
P245/40R19 W-rated all-season tires		■	■	■

Exterior Features	SV	SR	Platinum	40th Anniversary Edition ¹
LED headlights with LED signature Daytime Running Lights	■	■	■	■
LED fog lights		■	■	■
Taillights with integrated LED signature	■	■	■	■
Intelligent Auto Headlights	■	■	■	■
Black V-Motion grille		■	40th	■
Black exterior accents		■	40th	■
Dual power outside mirrors	■	■	■	■
Heated outside mirrors with LED turn signal indicators	■	■	■	■
Outside mirrors with reverse tilt-down feature		■	■	■
Auto-dimming driver-side outside mirror		■	■	■
Dual Panel Panoramic Moonroof with one-touch open/close		■	■	■
Black badging			40th	■
40th Anniversary Edition badge			40th	■
Black quad-tipped exhaust finishers		■	40th	■
Sport spoiler		■		

Comfort/Convenience	SV	SR	Platinum	40th Anniversary Edition ¹
Dual Zone Automatic Temperature Control with rear vents	■	■	■	■
Auto-dimming inside rearview mirror	■	■	■	■
HomeLink [®] Universal Transceiver		■	■	■
Nissan Intelligent Key [®] with Push Button Ignition	■	■	■	■
Remote Engine Start System ⁶ with Intelligent Climate Control	■	■	■	■
Remote front windows down and trunk release via Nissan Intelligent Key [®]	■	■	■	■
Power door locks with auto-locking feature	■	■	■	■
Power windows with front windows one-touch auto-up/down	■	■	■	■
Power-tilt/telescoping steering column			■	■
Rain-sensing variable intermittent windshield wipers			■	■
Adjustable ambient LED lighting		■	■	■
Rear-window power sunshade			■	■
Rear Door Alert ²⁷	■	■	■	■

Seating/Appointments	SV	SR	Platinum	40th Anniversary Edition ¹
8-way power driver's seat with power lumbar support	■	■	■	■
4-way power front-passenger's seat	■	■	■	■
Memory System – driver's seat and outside mirrors		■		
Memory System – driver's seat, steering wheel, and outside mirrors		■	■	■
Driver's seat manual thigh support extension		■	■	■
Front-passenger's seat power lifter		■	■	■
Heated front seats	■			
Climate-controlled front seats (heated and cooled)		■	■	■
Heated rear seats			40th	■
Heated steering wheel		■	■	■
60/40-split fold-down rear seatbacks	■	■	■	■
Leather-appointed seats	■			

Seating/Appointments (continued)	SV	SR	Platinum	40th Anniversary Edition ¹
Premium Ascot Leather-appointed seats with dynamic diamond-quilted Alcantara [®] inserts		■		
Premium Ascot Leather-appointed seats with diamond-quilted leather inserts			■	
40th Anniversary Edition semi-aniline Leather-appointed seats with dynamic diamond-quilted leather inserts with embossing			40th	■
Leather-wrapped steering wheel	■			
Premium Ascot Leather-wrapped steering wheel with Alcantara [®] insert		■		
Premium Ascot Leather-wrapped steering wheel			■	
40th Anniversary Edition Leather-wrapped steering wheel with contrast stitching			40th	■
Leather-wrapped shift knob	■	■	■	■
Satin Chrome faceted interior trim	■			
Satin Dark Chrome faceted interior trim		■	40th	■
Satin Birdseye Maple Wood faceted interior trim			■	
White gauge faces			40th	■
Aluminum sport pedals		■		
Charcoal headliner		■	40th	■

Audio/Entertainment	SV	SR	Platinum	40th Anniversary Edition ¹
Advanced Drive-Assist [®] Display ^{28, 29}	■	■	■	■
NissanConnect [®] 8" touch-screen display ⁸	■	■	■	■
Nissan Door to Door Navigation ⁹	■	■	■	■
NissanConnect [®] Services ⁸	■	■	■	■
NissanConnect [®] with Wi-Fi Hotspot ⁸	■	■	■	■
Apple CarPlay [®] integration ⁸	■	■	■	■
Android Auto ^{TM8}	■	■	■	■
SiriusXM [®] Traffic and Travel Link ⁸	■	■	■	■
Bluetooth [®] Hands-free Phone System ⁸	■	■	■	■
Hands-free Text Messaging Assistant ¹⁰	■	■	■	■
Display Commander	■	■	■	■
AM/FM/CD audio system with eight speakers	■			
Bose Premium Audio System with 11 speakers, including Centerpoint 2 surround technology		■	■	■
Active Noise Cancellation		■	■	■
Active Sound Enhancement		■	■	■
Auxiliary audio input jack ¹	■	■	■	■
One USB port and one USB-C port ¹	■			
Two USB ports and two USB-C ports ¹		■	■	■
SiriusXM [®] Radio ⁸	■	■	■	■
Streaming Audio via Bluetooth ^{®8}	■	■	■	■

Safety	SV	SR	Platinum	40th Anniversary Edition ¹
Nissan Advanced Air Bag System with supplemental front air bags with seat belt and occupant-classification sensors ³⁵	■	■	■	■
Seat-mounted side-impact supplemental air bags for front- and rear-seat outboard occupants ³⁵	■	■	■	■
Driver and front-passenger supplemental knee air bags ³⁵	■	■	■	■
Roof-mounted curtain supplemental air bags with rollover sensor for side-impact and rollover head protection for front and rear-seat outboard occupants ³⁵	■	■	■	■
3-point ALR/ELR passenger seat belt system (ELR for driver)	■	■	■	■
Front seat belts with pretensioners and load limiters	■	■	■	■

Safety (continued)	SV	SR	Platinum	40th Anniversary Edition ¹
LATCH System (Lower Anchors and Tethers for Children)	■	■	■	■
Zone Body construction with front and rear crumple zones	■	■	■	■
Energy-absorbing steering column	■	■	■	■
High-strength steel side-door guard beams	■	■	■	■
High-buckling creases	■	■	■	■
Tire Pressure Monitoring System (TPMS) with Easy-Fill Tire Alert ^{30, 31}	■	■	■	■

DIMENSIONS/CAPACITIES/MPG

Exterior Dimensions – Inches	
Wheelbase	109.3
Overall length/width/height	192.8/73.2/56.5

Interior Dimensions – Inches	
Head room (front/rear)	39.4/36.7
Head room with Dual Panel Moonroof (front/rear)	38.9/35.8
Leg room (front/rear)	45.0/34.2
Hip room (front/rear)	54.2/53.5
Shoulder room (front/rear)	56.7/55.7

Capacities	
Seating capacity	5
Interior passenger volume without moonroof (cu. ft.)	98.5
Interior passenger volume with moonroof (cu. ft.)	96.4
Cargo volume (cu. ft.) ³⁴	14.3
Fuel tank (gals.)	18.0

2021 EPA Fuel Economy Estimates ³⁶				
City/Highway/Combined MPG	SV	SR	PLT	40th AE
	20/30/24	20/30/24	20/30/24	20/30/24

NISSAN ROADSIDE ASSISTANCE

Your peace of mind is on us. For 36 months or 36,000 miles, whichever comes first, your new Nissan vehicle is covered for the following:³⁷

- Flat-tire changes
- Trip Interruption benefits
- Jump starts
- Vehicle lockouts
- Emergency fuel delivery

Follow Nissan on:



visit [NissanUSA.com/maxima](https://www.nissanusa.com/maxima)

PRINTED IN POLAND



Sign up to get the latest on
Nissan vehicles, news, and events.

<https://www.nissanusa.com/brochures/request-brochure.html>



Nissan Intelligent Mobility moves you one step ahead. In cars that feel like an extension of you, helping you see more and sense more, reacting with you, and sometimes even for you. Nissan Intelligent Mobility is about a better future – moving through life with greater confidence, excitement and connection to the world around you.

¹Driving is serious business and requires your full attention. If you have to use the connected device while driving, exercise extreme caution at all times so full attention may be given to vehicle operation. ²Availability of features vary by vehicle model year, model, trim level, packaging, and options. Please see Owner's Manual for important feature information. ³Supplies limited. Retailer inventory may vary. ⁴Available feature(s). ⁵Zero Gravity seats for outboard passengers only. ⁶State laws may apply. Review before using. ⁷Leather appointments. ⁸Use feature only when safe and legal. Compatible device and service required. Subject to third party service availability. For more information see NissanUSA.com/connect/legal. ⁹Never program while driving. GPS mapping may not be detailed in all areas or reflect current road status. ¹⁰Use the text messaging feature after stopping your vehicle in a safe location. If you have to use the feature while driving, exercise extreme caution at all times so full attention may be given to vehicle operation. Compatible smartphone required. Text rates and/or data usage may apply. ¹¹Nissan Safety Shield technologies can't prevent all collisions or warn in all situations. See Owner's Manual for important safety information. ¹²Automatic Emergency Braking with Pedestrian Detection cannot prevent all collisions and may not provide warning or braking in all conditions. Driver should monitor traffic conditions and brake as needed to prevent collisions. See Owner's Manual for safety information. ¹³Rear Automatic Braking cannot prevent all collisions and may not provide warning or braking in all conditions. Driver should always turn and check surroundings before driving and brake as needed to prevent collisions. See Owner's Manual for safety information. ¹⁴Rear Cross Traffic Alert may not detect all vehicles. See Owner's Manual for safety information. ¹⁵Blind Spot Warning cannot prevent collisions and may not detect every object or warn in all situations. Driver should always turn and look before changing lanes. See Owner's Manual for safety information. ¹⁶Lane Departure Warning and Intelligent Lane Intervention operate only when lane markings are detectable. See Owner's Manual for safety information. ¹⁷Extra cost option. ¹⁸Brake Assist cannot prevent all collisions and may not provide warning or braking in all conditions. Driver should monitor traffic conditions and brake as needed to prevent collisions. See Owner's Manual for safety information. ¹⁹Intelligent Cruise Control uses limited braking and is not a collision avoidance or warning system. Driver should monitor traffic conditions and brake as needed to prevent collisions. See Owner's Manual for safety information. ²⁰Intelligent Forward Collision Warning cannot prevent collisions. See Owner's Manual for safety information. ²¹RearView Monitor may not detect every object and does not eliminate blind spots or warn of moving objects. See Owner's Manual for safety information. ²²Sonar System may not detect every object. Driver should always check surroundings before driving. See Owner's Manual for safety information. ²³Vehicle Dynamic Control cannot prevent collisions due to abrupt steering, carelessness, or dangerous driving techniques. It should remain on when driving, except when freeing the vehicle from mud or snow. See Owner's Manual for safety information. ²⁴Intelligent Trace Control cannot prevent collisions or loss of control. Driver should remain in control of vehicle at all times. See Owner's Manual for safety information. ²⁵Traffic Sign Recognition may not detect and read all traffic signs in all conditions. Driver should monitor all traffic signs and obey all traffic laws. See Owner's Manual for details. ²⁶Intelligent Driver Alertness cannot provide a warning in every situation. See Owner's Manual for safety information. ²⁷Does not detect people or cargo. Always check rear seat before exiting. See Owner's Manual for safety information. ²⁸Driving is serious business and requires your full attention. If you have to use the feature while driving, exercise extreme caution at all times so full attention may be given to vehicle operation. ²⁹Information displayed is dependent on how vehicle is equipped. ³⁰Tire Pressure Monitoring System is not a substitute for regular tire pressure checks. See Owner's Manual for safety information. ³¹Vehicle must be on for the Easy-Fill Tire Alert to operate. ³²Intelligent Around View® Monitor cannot eliminate blind spots and may not detect every object. Driver should always turn and check surroundings before driving. See Owner's Manual for safety information. ³³Genuine Nissan Accessories are covered by Nissan's limited warranty on Genuine Nissan Replacement Parts, Genuine NISMO® S-Tune Parts, and Genuine Nissan Accessories for the longer of 12 months/12,000 miles (whichever occurs first) or the remaining period under the 36-month/36,000-mile (whichever occurs first) new vehicle limited warranty. Terms and conditions apply. See dealer, warranty information booklet, or parts.nissanusa.com for details. ³⁴Cargo and load capacity limited by weight and distribution. Always secure cargo. ³⁵Air bags are only a supplemental restraint system. Always wear your seat belt. Rear-facing child restraints should not be placed in the front-passenger's seat. All children 12 and under should ride in the rear seat properly secured in child restraints, booster seats, or seat belts according to their size. Air bags will only inflate in certain accidents. See Owner's Manual for safety information. ³⁶2021 EPA Fuel Economy Estimates 20/30/24 (City/Highway/Combined). Actual mileage may vary with driving conditions. Use for comparison only. ³⁷Roadside Assistance available for a period of 36 months/36,000 miles from the date the vehicle is delivered to the first retail buyer or otherwise put into use, whichever is earlier. Alcantara® is a registered trademark of Alcantara S.p.A. Corporation. Google, Android, Android Auto, YouTube and other marks are trademarks of Google LLC. Apple CarPlay® and Apple Music® are registered trademarks of Apple, Inc. Bluetooth® word mark and logos are owned by Bluetooth SIG, Inc. Bose® and Centerpoint® are registered trademarks of The Bose Corporation. ChromaFlair® is a registered trademark of Optical Coating Laboratory, LLC. Facebook® is a registered trademark of Facebook, Inc. HomeLink® is a registered trademark of Gentex Corporation. iPhone® is a registered trademark of Apple, Inc. All rights reserved. Siri® is a registered trademark of Apple, Inc. The Sirius®, XM®, and SiriusXM® names and all related marks and logos are trademarks of Sirius XM Radio Inc. Twitter® is a registered trademark of Twitter, Inc. This brochure is intended for general descriptive and informational purposes only. It is subject to change and does not constitute an offer, representation or warranty (express or implied) by Nissan North America, Inc. Interested parties should confirm the accuracy of any information in this brochure as it relates to a vehicle directly with Nissan North America, Inc. before relying on it to make a purchase decision. Nissan North America, Inc. reserves the right to make changes, at any time, without prior notice, in prices, colors, materials, equipment, specifications, and models and to discontinue models or equipment. Due to continuous product development and other pre- and post-production factors, actual vehicle, materials and specifications may vary from this brochure. Some vehicles shown with optional equipment. See the actual vehicle for complete accuracy. Availability and delivery times for particular models or equipment may vary. Specifications, options and accessories may differ in Hawaii, U.S. territories and other countries. For additional information on availability, options or accessories, see your Nissan dealer or contact Nissan North America, Inc. At NissanUSA.com, you'll find virtual product demonstrations, a way to "build your own Nissan," a dealer locator, and more information about key Nissan support services. Or if you'd prefer, call **1-800-NISSAN-3** for answers to specific questions about Maxima® or any other Nissan vehicle. The Nissan names, logos, product names, feature names, and slogans are trademarks owned by or licensed to Nissan Motor Co. Ltd. and/or its North American subsidiaries. Other trademarks and trade names are those of their respective owners. **Always wear your seat belt, and please drive responsibly.** ©2020 Nissan North America, Inc. '21 Maxima® 2103205-N-11/20-60M-KSL