

MAXIMA®

2022



NISSAN  
INTELLIGENT  
MOBILITY™



## The 4-Door Sports Car®

Welcome to exhilaration. A high-tech powerhouse that changes from premium ride to canyon carver at the touch of a button. Loaded with available advanced driver assist features and seamless connectivity with your compatible smartphone.<sup>1</sup> This is what it's like to drive a living legend.

Nissan Maxima® SR shown in Sunset Drift ChromaFlair®



## Pure ambiance

Technically, the term is “Wow.” There’s no better way to describe it — the perfect execution of driving function with elegance and style. The quality of materials and the ideal placement of controls are made for your touch. The long list of luxuries you expect — and a few you hadn’t even thought of — make every moment feel special. It’s just your every day inside of the Nissan Maxima.<sup>®</sup>

Premium Ascot Leather-appointed seats<sup>2</sup>

Zero Gravity Front Seats<sup>3</sup>

Climate-controlled front seats<sup>2</sup>

Heated rear seats<sup>2,4</sup>

Dual Panel Panoramic Moonroof<sup>2</sup>

Remote Engine Start System<sup>5</sup> with Intelligent Climate Control

Heated steering wheel<sup>2</sup>

Ambient LED lighting<sup>2</sup>

Contrast stitching on dashboard, doors, seats, and console



## Maxima® SR

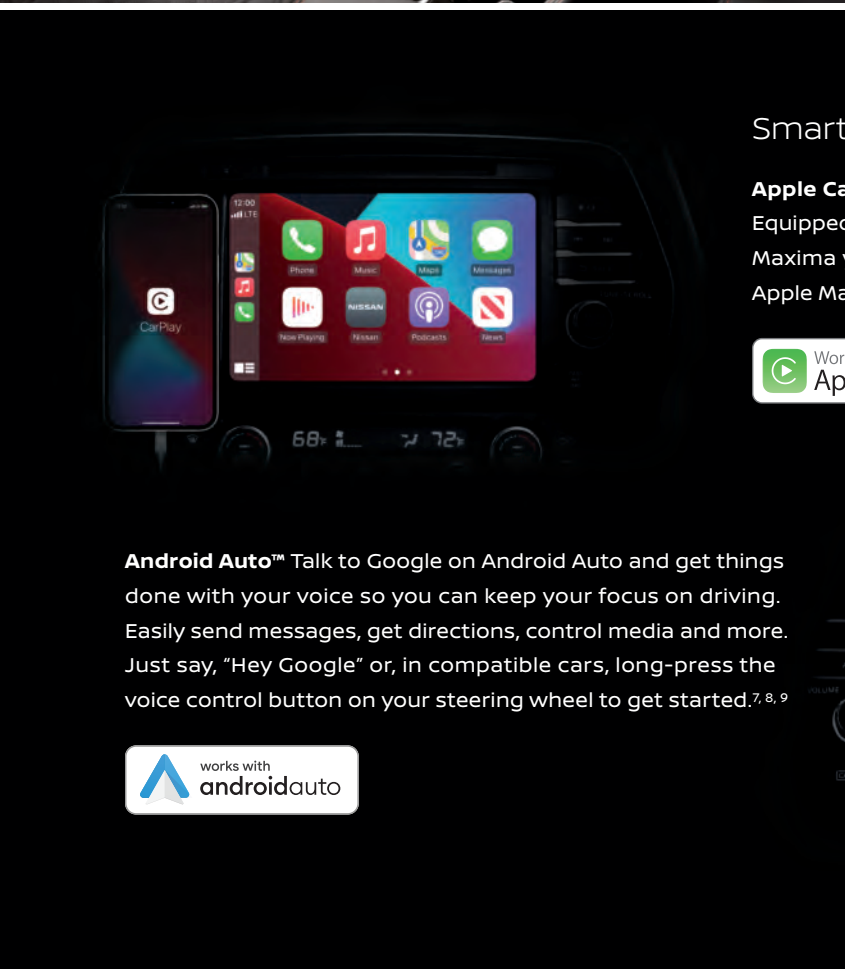
Start with 19" gloss black aluminum-alloy wheels, a Dual Panel Panoramic Moonroof, and a unique sport-tuned suspension with advanced dynamic technologies. Add in a special interior with Premium Ascot Leather appointments, Alcantara® inserts on the seats and steering wheel, and Satin Dark Chrome faceted interior trim. The result — a driving experience that's exhilarating in every sense of the word.



## Nissan Safety Shield® 360

Imagine being surrounded by confidence on every drive. Part of Nissan Intelligent Mobility, Safety Shield 360 includes features that monitor in front of you, behind you, and on either side, and can step in to help keep you safe. The following features come standard on every 2022 Nissan Maxima.<sup>10, 11</sup>

Automatic Emergency Braking with Pedestrian Detection <sup>12</sup>	Rear Automatic Braking <sup>13</sup>	Rear Cross Traffic Alert <sup>14</sup>	Blind Spot Warning <sup>15</sup>	Lane Departure Warning <sup>16</sup>	High Beam Assist
---	--------------------------------------	--	----------------------------------	--------------------------------------	------------------



## Smartphone connectivity

**Apple CarPlay® integration** People to see? Places to be? Just ask Siri.® Equipped with Siri® voice control, Apple CarPlay® brings on board to your Maxima your contacts, favorite messaging apps, Apple Music® playlists, Apple Maps, and more. Simply plug in your compatible iPhone® and go.<sup>7, 7</sup>



**Android Auto™** Talk to Google on Android Auto and get things done with your voice so you can keep your focus on driving. Easily send messages, get directions, control media and more. Just say, "Hey Google" or, in compatible cars, long-press the voice control button on your steering wheel to get started.<sup>7, 8, 9</sup>



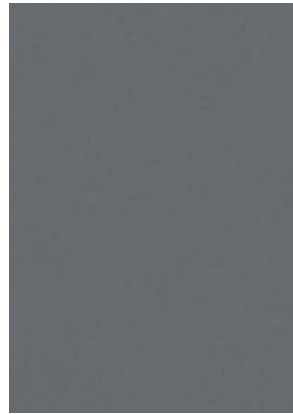
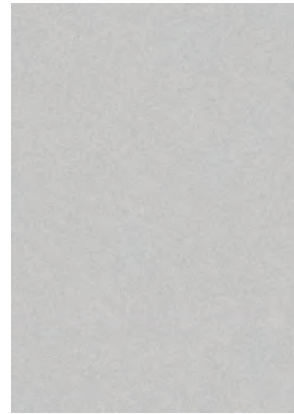
## Customized performance

With legendary VQ V6 power under your right foot and an Xtronic CVT® (Continuously Variable Transmission) to keep you in the meat of the powerband, Maxima is a driver's dream come true. And with the standard Drive Mode Selector, you can switch between sport sedan and luxurious cruiser at the touch of a button.

Xtronic CVT®	300-hp, 3.5-L VQ V6 Engine	Drive Mode Selector
--------------	----------------------------	---------------------



CHOOSE YOUR COLOR



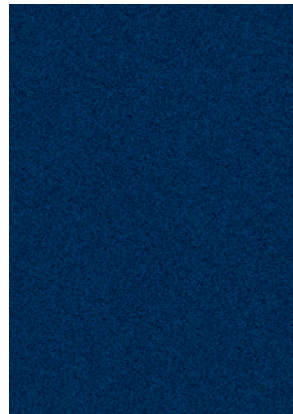
Pearl White TriCoat<sup>17</sup>

Brilliant Silver Metallic

Gun Metallic

Sunset Drift ChromaFlair<sup>®17</sup>

	Pearl White TriCoat <sup>17</sup>			Brilliant Silver Metallic			Gun Metallic			Sunset Drift ChromaFlair <sup>®17</sup>		
	SV	SR	PLT	SV	SR	PLT	SV	SR	PLT	SV	SR	PLT
Charcoal Leather <sup>6</sup>	<input type="checkbox"/>			<input type="checkbox"/>			<input type="checkbox"/>					
Cashmere Leather <sup>6</sup>	<input type="checkbox"/>											
Charcoal Premium Ascot Leather with Alcantara <sup>®</sup> Inserts <sup>6</sup>		<input type="checkbox"/>						<input type="checkbox"/>			<input type="checkbox"/>	
Charcoal Premium Ascot Leather <sup>6</sup>			<input type="checkbox"/>			<input type="checkbox"/>			<input type="checkbox"/>			<input type="checkbox"/>
Cashmere Premium Ascot Leather <sup>6</sup>			<input type="checkbox"/>									<input type="checkbox"/>



Scarlet Ember Tintcoat<sup>17</sup>

Deep Blue Pearl

Super Black

Standard

Nissan has taken care to ensure that the color swatches presented here are the closest possible representations of actual vehicle colors. Swatches may vary slightly due to the printing process and whether viewed in daylight, fluorescent or incandescent light. Please see the actual colors at your dealer.

	Scarlet Ember Tintcoat <sup>17</sup>			Deep Blue Pearl			Super Black		
	SV	SR	PLT	SV	SR	PLT	SV	SR	PLT
Charcoal Leather <sup>6</sup>	<input type="checkbox"/>			<input type="checkbox"/>			<input type="checkbox"/>		
Cashmere Leather <sup>6</sup>	<input type="checkbox"/>			<input type="checkbox"/>			<input type="checkbox"/>		
Charcoal Premium Ascot Leather with Alcantara <sup>®</sup> Inserts <sup>6</sup>								<input type="checkbox"/>	
Charcoal Premium Ascot Leather <sup>6</sup>			<input type="checkbox"/>			<input type="checkbox"/>			<input type="checkbox"/>
Cashmere Premium Ascot Leather <sup>6</sup>			<input type="checkbox"/>			<input type="checkbox"/>			<input type="checkbox"/>

CHOOSE YOUR INTERIOR



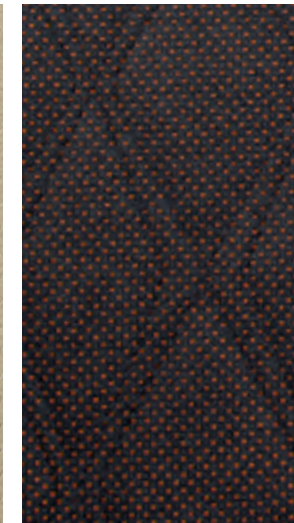
Nissan Maxima<sup>®</sup> Platinum shown in Cashmere Premium Ascot Leather.<sup>6</sup>



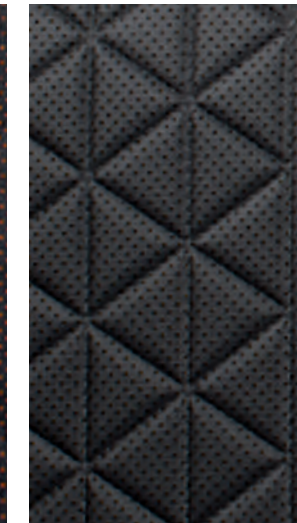
Charcoal Leather<sup>6</sup>  
SV



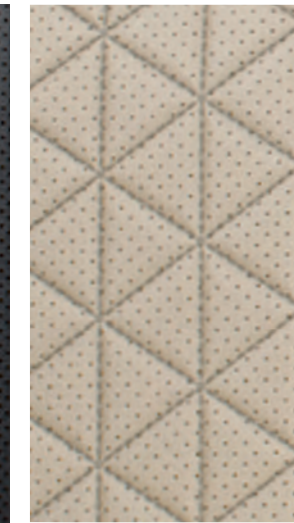
Cashmere Leather<sup>6</sup>  
SV



Charcoal Premium Ascot Leather with Alcantara<sup>®</sup> Inserts<sup>6</sup>  
SR



Charcoal Premium Ascot Leather<sup>6</sup>  
Platinum



Cashmere Premium Ascot Leather<sup>6</sup>  
Platinum

## CHOOSE YOUR TRIM LEVEL

### SV

- 3.5-liter DOHC 24-valve V6 engine
- 300 hp and 261 lb-ft of torque
- Continuously Variable Valve Timing Control System (CVTCS) on intake and exhaust valves
- Xtronic CVT® (Continuously Variable Transmission) with Drive Mode Selector
- Brake Assist<sup>18</sup>
- Intelligent Cruise Control<sup>19</sup>
- Intelligent Driver Alertness<sup>20</sup>
- Intelligent Forward Collision Warning<sup>21</sup>
- Automatic Emergency Braking with Pedestrian Detection<sup>12</sup>
- Lane Departure Warning<sup>16</sup>
- Blind Spot Warning<sup>15</sup>
- Rear Cross Traffic Alert<sup>14</sup>
- RearView Monitor<sup>22</sup>
- Rear Sonar System<sup>23</sup>
- Rear Automatic Braking<sup>13</sup>
- High Beam Assist
- Vehicle Dynamic Control (VDC)<sup>24</sup> with Traction Control System (TCS)
- Integrated Dynamics-control Module – Active Ride Control, Intelligent Trace Control,<sup>25</sup> Intelligent Engine Brake
- Traffic Sign Recognition<sup>26</sup>
- 18" Machine-finished aluminum-alloy wheels
- LED headlights with LED signature Daytime Running Lights
- Taillights with integrated LED signature
- Intelligent Auto Headlights
- Dual power heated outside mirrors with LED turn signal indicators
- Chrome quad-tipped exhaust finishers
- Dual Zone Automatic Temperature Control with rear vents
- Auto-dimming inside rearview mirror
- Nissan Intelligent Key® with Push Button Ignition
- Remote Engine Start System<sup>5</sup> with Intelligent Climate Control
- Remote front windows down and trunk release via Nissan Intelligent Key®
- Tilt/telescoping steering column
- Vehicle-speed-sensing variable intermittent windshield wipers
- Rear Door Alert<sup>27</sup>
- 8-way power driver's seat with power lumbar support
- 4-way power front-passenger's seat
- Zero Gravity front seats<sup>3</sup>
- Heated front seats
- 60/40-split fold-down rear seatbacks
- Leather-appointed seats
- Leather-wrapped steering wheel
- Leather-wrapped shift knob
- Satin Chrome faceted interior trim
- Contrast stitching on dashboard, doors, seats, and console
- 7" Advanced Drive-Assist® Display<sup>28</sup>
- NissanConnect® 8" color touch-screen display<sup>7</sup>
- Nissan Door to Door Navigation<sup>8</sup>
- NissanConnect® Services powered by SiriusXM® with trial access to 5-year Select and Plus, and 6-month Premium packages<sup>7</sup>
- NissanConnect® with Wi-Fi Hotspot<sup>7</sup>
- Apple CarPlay® integration<sup>7</sup>
- Android Auto™ compatibility<sup>7</sup>
- SiriusXM® Traffic and Travel Link with 3-month trial access<sup>7</sup>
- Bluetooth® Hands-free Phone System<sup>7</sup>
- Hands-free Text Messaging Assistant<sup>9</sup>
- Display Commander
- AM/FM/CD audio system with eight speakers
- MP3/WMA CD playback capability
- Auxiliary audio input jack<sup>1</sup>
- One USB-A port and one USB-C port<sup>1</sup>
- SiriusXM® Radio with 3-month trial access<sup>7</sup>
- Streaming Audio via Bluetooth®<sup>7</sup>
- Radio Data System (RDS) and speed-sensitive volume control
- Tire Pressure Monitoring System (TPMS) with Easy-Fill Tire Alert<sup>29,30</sup>



### SR

#### INCLUDES SV EQUIPMENT PLUS:

- Paddle shifters
- Sport-tuned suspension with retuned dampers, stiffer springs and larger front stabilizer bar
- 19" Gloss black aluminum-alloy wheels
- Black V-Motion grille
- Black exterior accents
- Black quad-tipped exhaust finishers
- Sport spoiler
- Premium Ascot Leather-appointed seats with dynamic diamond-quilted Alcantara® inserts
- Premium Ascot Leather-wrapped steering wheel with Alcantara® inserts
- Satin Dark Chrome faceted interior trim
- Aluminum sport pedals
- Charcoal headliner
- Active Sound Enhancement
- Intelligent Lane Intervention<sup>16</sup>
- Intelligent Around View® Monitor<sup>31</sup>
- Front and Rear Sonar System<sup>23</sup>
- LED fog lights
- Outside mirrors with reverse tilt-down feature
- Auto-dimming driver-side outside mirror
- Dual Panel Panoramic Moonroof
- HomeLink® Universal Transceiver
- Adjustable ambient LED lighting
- Memory System – driver's seat and outside mirrors
- Driver's seat manual thigh support extension
- Front-passenger's seat power lifter
- Climate-controlled front seats (heated and cooled)
- Heated steering wheel
- Bose Premium Audio System with 11 speakers, including Centerpoint® 2 surround technology
- Active Noise Cancellation
- Two USB-A ports and two USB-C ports<sup>1</sup>



### PLATINUM

#### INCLUDES SV EQUIPMENT PLUS:

- 19" Machine-finished aluminum-alloy wheels
- Power-tilt/telescoping steering column
- Rain-sensing variable intermittent windshield wipers
- Rear-window power sunshade
- Memory System – driver's seat, steering wheel, and outside mirrors
- Heated rear seats<sup>4</sup>
- Premium Ascot Leather-appointed seats with diamond-quilted leather inserts
- Premium Ascot Leather-wrapped steering wheel
- Satin Birdseye Maple Wood-tone faceted interior trim
- Intelligent Lane Intervention<sup>16</sup>
- Intelligent Around View® Monitor<sup>31</sup>
- Front and Rear Sonar System<sup>23</sup>
- LED fog lights
- Outside mirrors with reverse tilt-down feature
- Auto-dimming driver-side outside mirror
- Dual Panel Panoramic Moonroof
- HomeLink® Universal Transceiver
- Adjustable ambient LED lighting
- Driver's seat manual thigh support extension
- Front-passenger's seat power lifter
- Climate-controlled front seats (heated and cooled)
- Heated steering wheel
- Bose Premium Audio System with 11 speakers, including Centerpoint® 2 surround technology
- Active Noise Cancellation
- Two USB-A ports and two USB-C ports<sup>1</sup>



## CHOOSE YOUR ACCESSORIES



A

B

**A. Premium Rear Spoiler**

A fitting end to a breathtaking design.

**B. 18" Aluminum-alloy Wheels**

Aggressively styled, exclusively for Maxima®.

**C. Dual Rear USB Charging Ports<sup>1</sup>**

Charge up with USB-A and state-of-the-art USB-C.

**D. Illuminated Kick Plates, Interior Accent Lighting**

Creates a special ambiance every time. (Sold separately)

**E. All-Season Floor Mats, Sport Carpeted Floor Mats, and Carpeted Floor Mats**

Skip the mud, and other messes. (Sold separately)

**F. Stainless Steel Sport Pedals**

Track-inspired grip and looks.

**G. Impact Sensor**

Chirps if bumped. Sounds alarm if wheel theft or break-in is detected.

**H. All-Season Trunk Area Protector<sup>33</sup>**

Helps preserve and protect your cargo.

**Additional Accessories:**

- Interior Appliqués
- Hideaway Trunk Net<sup>33</sup>
- Portable Trunk Organizer<sup>33</sup>
- Sliding Trunk Organizer Tray<sup>33</sup>
- Shift Knobs
- Carpeted Trunk Area Protector
- Shopping Bag Hooks
- And More

For more information and to shop online for Maxima® Genuine Nissan Accessories, go to [bit.ly/22Maxima-Accys](https://bit.ly/22Maxima-Accys)



C

D



E



F



G

H



## GENUINE NISSAN ACCESSORIES

### Turn brand-new into all you

Every Genuine Nissan Accessory is custom-fit, custom-designed and durability-tested. Each one is backed by Nissan's 3-year/36,000-mile (whichever occurs first) limited warranty (if installed by dealer at the time of purchase), and can be financed when installed by dealer at time of purchase.<sup>32</sup>



**Nissan Maxima® SR** shown in Pearl White TriCoat with Sport Spoiler (standard on SR), Splash Guards, Rocker Panel Moldings, and Rear Bumper Diffuser.

## SPECIFICATIONS

Engine	SV	SR	Platinum
3.5-liter DOHC 24-valve V6 engine 300 hp @ 6,400 rpm 261 lb-ft of torque @ 4,400 rpm	■	■	■
Continuously Variable Valve Timing Control System (CVTCS) on intake and exhaust valves	■	■	■
Nissan Direct Ignition System	■	■	■
Electronic drive-by-wire throttle	■	■	■

Drivetrain	SV	SR	Platinum
Front engine/Front-Wheel Drive	■	■	■
Xtronic CVT® (Continuously Variable Transmission) with Drive Mode Selector	■	■	■
Paddle shifters		■	

Brakes	SV	SR	Platinum
Front and rear vented discs	■	■	■
4-wheel Anti-lock Braking System (ABS)	■	■	■
Electronic Brake force Distribution (EBD)	■	■	■
Brake Assist <sup>18</sup>	■	■	■

Suspension/Steering	SV	SR	Platinum
Independent strut front and multi-link rear suspension	■	■	■
Front and rear stabilizer bars	■	■	■
Sport-tuned suspension with retuned dampers, stiffer springs, and larger front stabilizer bar		■	
Hydro-electric power steering	■	■	■

Driver Assistance Technologies	SV	SR	Platinum
Intelligent Cruise Control <sup>19</sup>	■	■	■
Intelligent Driver Alertness <sup>20</sup>	■	■	■
Intelligent Forward Collision Warning <sup>21</sup>	■	■	■
Automatic Emergency Braking with Pedestrian Detection <sup>22</sup>	■	■	■
Lane Departure Warning <sup>16</sup>	■	■	■
Intelligent Lane Intervention <sup>16</sup>		■	■
Blind Spot Warning <sup>15</sup>	■	■	■
Rear Cross Traffic Alert <sup>14</sup>	■	■	■
RearView Monitor <sup>22</sup>	■		
Intelligent Around View® Monitor <sup>31</sup>	■	■	■
Rear Sonar System <sup>23</sup>		■	■
Front and Rear Sonar System <sup>23</sup>	■	■	■
Rear Automatic Braking <sup>13</sup>	■	■	■
High Beam Assist	■	■	■
Vehicle Dynamic Control (VDC) <sup>24</sup> with Traction Control System (TCS)	■	■	■
Integrated Dynamics-control Module – Active Ride Control, Intelligent Trace Control, <sup>25</sup> Intelligent Engine Brake	■	■	■
Traffic Sign Recognition <sup>26</sup>	■	■	■

Wheels/Tires	SV	SR	Platinum
18" Machine-finished aluminum-alloy wheels	■		
19" Gloss black aluminum-alloy wheels		■	
19" Machine-finished aluminum-alloy wheels			■
P245/45R18 V-rated all-season tires	■		
P245/40R19 W-rated all-season tires		■	■

■ Standard

Exterior Features	SV	SR	Platinum
LED headlights with LED signature Daytime Running Lights	■	■	■
LED fog lights		■	■
Taillights with integrated LED signature	■	■	■
Intelligent Auto Headlights	■	■	■
Black V-Motion grille		■	
Black exterior accents		■	
Dual power heated outside mirrors with LED turn signal indicators	■	■	■
Outside mirrors with reverse tilt-down feature		■	■
Auto-dimming driver-side outside mirror		■	■
Dual Panel Panoramic Moonroof with one-touch open/close		■	■
Chrome quad-tipped exhaust finishers	■		■
Black quad-tipped exhaust finishers		■	
Sport spoiler		■	

Comfort/Convenience	SV	SR	Platinum
Dual Zone Automatic Temperature Control with rear vents	■	■	■
Auto-dimming inside rearview mirror	■	■	■
HomeLink® Universal Transceiver		■	■
Nissan Intelligent Key® with Push Button Ignition	■	■	■
Remote Engine Start System <sup>5</sup> with Intelligent Climate Control	■	■	■
Remote front windows down and trunk release via Nissan Intelligent Key®	■	■	■
Tilt/telescoping steering column	■	■	
Power-tilt/telescoping steering column			■
Vehicle-speed-sensing variable intermittent windshield wipers	■	■	■
Rain-sensing variable intermittent windshield wipers			■
Adjustable ambient LED lighting		■	■
Rear-window power sunshade			■
Rear Door Alert <sup>27</sup>	■	■	■

Seating/Appointments	SV	SR	Platinum
8-way power driver's seat with power lumbar support	■	■	■
4-way power front-passenger's seat	■	■	■
Zero Gravity front seats <sup>3</sup>	■	■	■
Memory System – driver's seat and outside mirrors		■	
Memory System – driver's seat, steering wheel, and outside mirrors		■	■
Driver's seat manual thigh support extension		■	■
Front-passenger's seat power lifter		■	■
Heated front seats	■		
Climate-controlled front seats (heated and cooled)		■	■
Heated rear seats <sup>4</sup>			■
Heated steering wheel		■	■
60/40-split fold-down rear seatbacks	■	■	■
Leather-appointed seats	■		
Premium Ascot Leather-appointed seats with dynamic diamond-quilted Alcantara® inserts		■	
Premium Ascot Leather-appointed seats with diamond-quilted leather inserts			■
Leather-wrapped steering wheel	■		
Premium Ascot Leather-wrapped steering wheel with Alcantara® insert		■	

Seating/Appointments (continued)	SV	SR	Platinum
Premium Ascot Leather-wrapped steering wheel			■
Leather-wrapped shift knob	■	■	■
Satin Chrome faceted interior trim	■		
Satin Dark Chrome faceted interior trim		■	
Satin Birdseye Maple Wood-tone faceted interior trim			■
Aluminum sport pedals		■	
Charcoal headliner		■	

Audio/Entertainment	SV	SR	Platinum
7" Advanced Drive-Assist® Display <sup>28</sup>	■	■	■
NissanConnect® 8" color touch-screen display <sup>7</sup>	■	■	■
Nissan Door to Door Navigation <sup>8</sup>	■	■	■
NissanConnect® Services powered by SiriusXM <sup>®7</sup>	■	■	■
NissanConnect® with Wi-Fi Hotspot <sup>7</sup>	■	■	■
Apple CarPlay® integration <sup>7</sup>	■	■	■
Android Auto™ compatibility <sup>7</sup>	■	■	■
SiriusXM® Traffic and Travel Link <sup>7</sup>	■	■	■
Bluetooth® Hands-free Phone System <sup>7</sup>	■	■	■
Hands-free Text Messaging Assistant <sup>9</sup>	■	■	■
Display Commander	■	■	■
AM/FM/CD audio system with eight speakers	■		
Bose Premium Audio System with 11 speakers, including Centerpoint® 2 surround technology		■	■
Active Noise Cancellation		■	■
Active Sound Enhancement		■	
Auxiliary audio input jack <sup>1</sup>	■	■	■
One USB-A port and one USB-C port <sup>1</sup>	■		
Two USB-A ports and two USB-C ports <sup>1</sup>		■	■
SiriusXM® Radio <sup>7</sup>	■	■	■
Streaming Audio via Bluetooth <sup>®7</sup>	■	■	■
Radio Data System (RDS) and speed-sensitive volume control	■	■	■

Safety	SV	SR	Platinum
Nissan Advanced Air Bag System with supplemental front air bags with seat-belt and occupant-classification sensors <sup>34</sup>	■	■	■
Seat-mounted side-impact supplemental air bags for front- and rear-seat outboard occupants <sup>34</sup>	■	■	■
Driver and front-passenger supplemental knee air bags <sup>34</sup>	■	■	■
Roof-mounted curtain supplemental air bags with rollover sensor for side-impact and rollover head protection for front- and rear-seat outboard occupants <sup>34</sup>	■	■	■
3-point ALR/ELR passenger seat belt system (ELR for driver)	■	■	■
Front seat belts with pretensioners and load limiters	■	■	■
LATCH System (Lower Anchors and Tethers for Children)	■	■	■
Zone Body construction with front and rear crumple zones	■	■	■
Energy-absorbing steering column	■	■	■
High-strength steel side-door guard beams	■	■	■
Hood-buckling creases	■	■	■
Tire Pressure Monitoring System (TPMS) with Easy-Fill Tire Alert <sup>29, 30</sup>	■	■	■

## DIMENSIONS/CAPACITIES/MPG

Exterior Dimensions – Inches	
Wheelbase	109.3
Overall length/width/height	192.8/73.2/56.5

Interior Dimensions – Inches	
Head room (front/rear)	39.4/36.7
Head room with Dual Panel Moonroof (front/rear)	38.9/35.8
Leg room (front/rear)	45.0/34.2
Hip room (front/rear)	54.2/53.5
Shoulder room (front/rear)	56.7/55.7

Capacities	
Seating capacity	5
Interior passenger volume without moonroof (cu. ft.)	98.5
Interior passenger volume with moonroof (cu. ft.)	96.4
Cargo volume (cu. ft.) <sup>33</sup>	14.3
Fuel tank (gals.)	18.0

EPA Fuel Economy Estimates <sup>35</sup>	SV	SR	PLT
City/Highway/Combined MPG	20/30/24	20/30/24	20/30/24

## NISSAN ROADSIDE ASSISTANCE

Your peace of mind is on us. For 36 months or 36,000 miles, whichever comes first, your new Nissan vehicle is covered for the following:<sup>36</sup>

- Flat-tire changes
- Trip Interruption benefits
- Jump starts
- Vehicle lockouts
- Emergency fuel delivery

Follow Nissan on:



visit [NissanUSA.com/maxima](https://www.nissanusa.com/maxima)

PRINTED IN POLAND



Nissan Intelligent Mobility moves you one step ahead. In cars that feel like an extension of you, helping you see more and sense more, reacting with you, and sometimes even for you. Nissan Intelligent Mobility is about a better future – moving through life with greater confidence, excitement and connection to the world around you.

<sup>1</sup>Driving is serious business and requires your full attention. If you have to use the connected device while driving, exercise extreme caution at all times so full attention may be given to vehicle operation. <sup>2</sup>Available feature(s). <sup>3</sup>Zero Gravity seats for outboard passengers only. <sup>4</sup>Heated rear seats for outboard passengers only. <sup>5</sup>Remote Engine Start System to be used only in accordance with any laws or rules in effect in your vehicle's location. <sup>6</sup>Leather appointments. <sup>7</sup>Use feature only when safe and legal. Compatible device and service required. Subject to third party service availability. For more information see [NissanUSA.com/connect/legal](http://NissanUSA.com/connect/legal). <sup>8</sup>Never program while driving. GPS mapping may not be detailed in all areas or reflect current road status. <sup>9</sup>Use Hands Free Text Messaging when parked in a safe location. If you must use while driving, monitor traffic conditions and keep both hands on the steering wheel to prevent collisions. Compatible device required. Message and data rates may apply. <sup>10</sup>Availability of features vary by vehicle model year, model, trim level, packaging, and options. Please see Owner's Manual for important feature information. <sup>11</sup>Nissan Safety Shield technologies can't prevent all collisions or warn in all situations. See Owner's Manual for important safety information. <sup>12</sup>Automatic Emergency Braking with Pedestrian Detection cannot prevent all collisions and may not provide warning or braking in all conditions. Driver should monitor traffic conditions and brake as needed to prevent collisions. See Owner's Manual for safety information. <sup>13</sup>Rear Automatic Braking cannot prevent all collisions and may not provide warning or braking in all conditions. Driver should always turn and check surroundings before driving and brake as needed to prevent collisions. See Owner's Manual for safety information. <sup>14</sup>Rear Cross Traffic Alert may not detect all vehicles. See Owner's Manual for safety information. <sup>15</sup>Blind Spot Warning cannot prevent collisions and may not detect every object or warn in all situations. Driver should always turn and look before changing lanes. See Owner's Manual for safety information. <sup>16</sup>Lane Departure Warning and Intelligent Lane Intervention operate only when lane markings are detectable. See Owner's Manual for safety information. <sup>17</sup>Extra cost option. <sup>18</sup>Brake Assist cannot prevent all collisions and may not provide warning or braking in all conditions. Driver should monitor traffic conditions and brake as needed to prevent collisions. See Owner's Manual for safety information. <sup>19</sup>Intelligent Cruise Control uses limited braking and is not a collision avoidance or warning system. Driver should monitor traffic conditions and brake as needed to prevent collisions. See Owner's Manual for safety information. <sup>20</sup>Intelligent Driver Alertness cannot provide a warning in every situation. See Owner's Manual for safety information. <sup>21</sup>Intelligent Forward Collision Warning cannot prevent collisions. See Owner's Manual for safety information. <sup>22</sup>RearView Monitor may not detect every object and does not eliminate blind spots or warn of moving objects. See Owner's Manual for safety information. <sup>23</sup>Sonar System may not detect every object. Driver should always check surroundings before driving. See Owner's Manual for safety information. <sup>24</sup>Vehicle Dynamic Control cannot prevent collisions due to abrupt steering, carelessness, or dangerous driving techniques. It should remain on when driving, except when freeing the vehicle from mud or snow. See Owner's Manual for safety information. <sup>25</sup>Intelligent Trace Control cannot prevent collisions or loss of control. Driver should remain in control of vehicle at all times. See Owner's Manual for safety information. <sup>26</sup>Traffic Sign Recognition may not detect and read all traffic signs in all conditions. Driver should monitor all traffic signs and obey all traffic laws. See Owner's Manual for details. <sup>27</sup>Rear Door Alert System does not detect people or cargo. Always check rear seat before exiting. See Owner's Manual for safety information. <sup>28</sup>Information displayed is dependent on how vehicle is equipped. Driving is serious business and requires your full attention. If you have to use the feature while driving, exercise extreme caution at all times so full attention may be given to vehicle operation. <sup>29</sup>Tire Pressure Monitoring System is not a substitute for regular tire pressure checks. See Owner's Manual for safety information. <sup>30</sup>Vehicle must be on for the Easy-Fill Tire Alert to operate. <sup>31</sup>Intelligent Around View® Monitor cannot eliminate blind spots and may not detect every object. Driver should always turn and check surroundings before driving. See Owner's Manual for safety information. <sup>32</sup>Genuine Nissan Accessories are covered by Nissan's limited warranty on Genuine Nissan Replacement Parts, Genuine NISMO® S-Tune Parts, and Genuine Nissan Accessories for the longer of 12 months/12,000 miles (whichever occurs first) or the remaining period under the 36-month/36,000-mile (whichever occurs first) new vehicle limited warranty. Terms and conditions apply. See dealer, warranty information booklet, or [parts.nissanusa.com](http://parts.nissanusa.com) for details. <sup>33</sup>Cargo and load capacity limited by weight and distribution. Always secure cargo. <sup>34</sup>Air bags are only a supplemental restraint system. Always wear your seat belt. Rear-facing child restraints should not be placed in the front-passenger's seat. All children 12 and under should ride in the rear seat properly secured in child restraints, booster seats, or seat belts according to their size. Air bags will only inflate in certain accidents. See Owner's Manual for safety information. <sup>35</sup>2021 EPA Fuel Economy Estimates. 20 City MPG / 30 Highway MPG / 24 Combined MPG for Maxima. 2022 EPA estimates not available at time of publication. Actual mileage may vary with driving conditions. Use for comparison only. <sup>36</sup>Roadside assistance coverage period varies by model-year model. For complete information concerning warranty coverage, conditions and exclusions, see your Nissan dealer and read the warranty information booklet for the model-year model. Alcantara® is a registered trademark of Alcantara S.p.A. Corporation. Google, Android, Android Auto, Google Maps and other marks are trademarks of Google LLC. To use Android Auto on your car display, you'll need an Android phone running Android 6 or higher, an active data plan, and the Android Auto app. Apple CarPlay® and Apple Music® are registered trademarks of Apple, Inc. Bluetooth® word mark and logos are owned by Bluetooth SIG, Inc. Bose® and Centerpoint® are registered trademarks of The Bose Corporation. ChromaFlair® is a registered trademark of Optical Coating Laboratory, LLC. Facebook® is a registered trademark of Facebook, Inc. HomeLink® is a registered trademark of Gentex Corporation. iPhone® is a registered trademark of Apple, Inc. All rights reserved. Siri® is a registered trademark of Apple, Inc. The Sirius®, XM®, and SiriusXM® names and all related marks and logos are trademarks of Sirius XM Radio Inc. Twitter® is a registered trademark of Twitter, Inc. This brochure is intended for general descriptive and informational purposes only. It is subject to change and does not constitute an offer, representation or warranty (express or implied) by Nissan North America, Inc. Interested parties should confirm the accuracy of any information in this brochure as it relates to a vehicle directly with Nissan North America, Inc. Before relying on it to make a purchase decision. Nissan North America, Inc. reserves the right to make changes, at any time, without prior notice, in prices, colors, materials, equipment, specifications, and models and to discontinue models or equipment. Due to continuous product development and other pre- and post-production factors, actual vehicle, materials and specifications may vary from this brochure. Some vehicles shown with optional equipment. See the actual vehicle for complete accuracy. Availability and delivery times for particular models or equipment may vary. Specifications, options and accessories may differ in Hawaii, U.S. territories and other countries. For additional information on availability, options or accessories, see your Nissan dealer or contact Nissan North America, Inc. At [NissanUSA.com](http://NissanUSA.com), you'll find virtual product demonstrations, a way to "build your own Nissan," a dealer locator, and more information about key Nissan support services. Or if you'd prefer, call 1-800-NISSAN-3 for answers to specific questions about Maxima® or any other Nissan vehicle. The Nissan names, logos, product names, feature names, and slogans are trademarks owned by or licensed to Nissan Motor Co. Ltd. and/or its North American subsidiaries. Other trademarks and trade names are those of their respective owners. **Always wear your seat belt, and please drive responsibly.** ©2021 Nissan North America, Inc. '22 Maxima® 2205818-N-09/21-60K-KSL