



2021
MURANO®



Your life deserves a better crossover. Ever wonder what the difference is between good and great? Good is fitting in. Great is standing out. Like the 2021 Nissan Murano,[®] a 5-passenger premium crossover you can't take your eyes off of. But greatness is more than stylish looks. It's the confidence of available Intelligent All-Wheel Drive¹ and the connectivity of Apple CarPlay^{®2} for your compatible iPhone.[®] This is technology that moves you like never before. This is the 2021 Nissan Murano.





Available Heated Front and Rear Outboard Seats

Available Semi-aniline Leather Appointments

Available Dark Wood Finishes

Front and Rear USB-C Ports³

Nissan Murano® Platinum AWD shown in Cashmere Semi-aniline Leather.⁴

Design is in our DNA

It's what inspires us, beginning with available dark wood-toned finishes and semi-aniline leather-appointed seats. Emotion is further illuminated by the available Dual Panel Panoramic Moonroof that lets in natural light, providing a large view above. And with front and rear USB-C ports, everyone can enjoy fast charging.³

Intelligent All-Wheel Drive

Murano's available Intelligent All-Wheel Drive adapts to changing conditions, helping you get a better grip for the situation.¹ The system can automatically switch from 2-wheel to 4-wheel and back, for optimal fuel efficiency and confidence on the road.⁵



Standard Nissan Safety Shield® 360

Imagine feeling confident in most any situation. With a suite of six standard Safety Shield 360 technologies, the Nissan Murano is looking out for you all around. This is additional peace of mind you can enjoy with every 2021 Murano.^{7,8}

Automatic Emergency Braking with Pedestrian Detection⁹

Rear Automatic Braking¹⁰

Rear Cross Traffic Alert¹¹

Blind Spot Warning¹²

Lane Departure Warning¹³

High Beam Assist

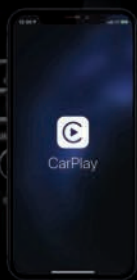
Motion Activated Liftgate

Hands full? Just kick under the rear bumper to open the available Motion Activated Liftgate, without reaching for a key or juggling whatever you're carrying.¹⁴



Seamless connectivity

People to see? Places to be? Just ask Siri®. Equipped with Siri® voice control, Apple CarPlay® brings your contacts, favorite messaging apps, Apple Music® playlists, Apple Maps, and more on board to your Murano®. Simply plug in your compatible iPhone® and go.^{2,3}



Talk to Google on Android Auto™ and get things done with your voice so you can keep your focus on driving. Easily send messages, get directions, control media and more. Just say, "Hey Google" or long-press the voice control button on your steering wheel.^{2,6}

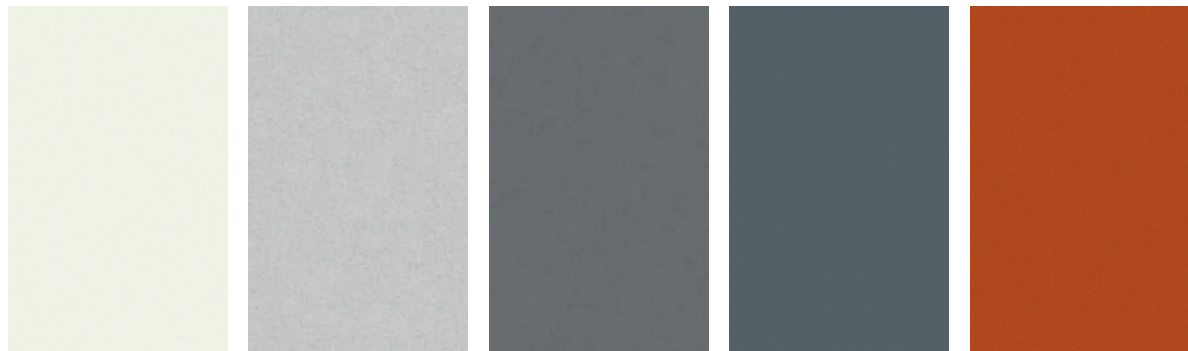


Intelligent Around View® Monitor

Keep your pride and rims intact. The available Intelligent Around View® Monitor makes parking easy with a virtual composite 360° bird's-eye view of your Murano. You can select from split-screen close-ups of the front, rear, and curbside views for a better look. It also gives you an on-screen warning when it detects moving objects near your vehicle. We're looking at you, shopping cart.^{15,16}

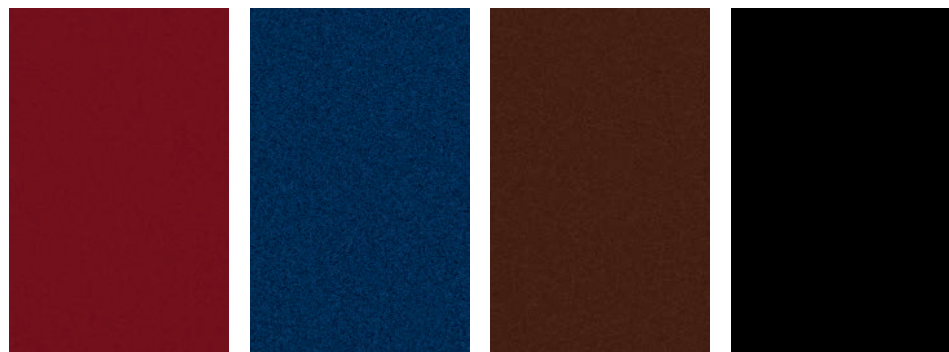


CHOOSE YOUR COLOR



Pearl White TriCoat¹⁷ Brilliant Silver Metallic Gun Metallic Boulder Gray Pearl Sunset Drift ChromaFlair^{®17}

	S	SV	SL	PLT	S	SV	SL	PLT	S	SV	SL	PLT	S	SV	SL	PLT	S	SV	SL	PLT	
GRAPHITE CLOTH	■	■			■	■								■							
CASHMERE CLOTH		■				■									■						
GRAPHITE LEATHERETTE		□				□								□							
CASHMERE LEATHERETTE		□				□								□							
GRAPHITE LEATHER ⁴			■				■								■						
CASHMERE LEATHER ⁴			■				■								■						
MOCHA SEMI-ANILINE LEATHER ⁴				■				■								■					
GRAPHITE SEMI-ANILINE LEATHER ⁴				■				■								■					
CASHMERE SEMI-ANILINE LEATHER ⁴				■				■								■					



Scarlet Ember Tintcoat¹⁷ Deep Blue Pearl Mocha Almond Pearl Magnetic Black Pearl

	S	SV	SL	PLT	S	SV	SL	PLT	S	SV	SL	PLT	S	SV	SL	PLT
GRAPHITE CLOTH		■			■	■				■	■					
CASHMERE CLOTH		■				■					■					
GRAPHITE LEATHERETTE		□				□					□					
CASHMERE LEATHERETTE		□				□					□					
GRAPHITE LEATHER ⁴			■				■					■				
CASHMERE LEATHER ⁴			■				■					■				
MOCHA SEMI-ANILINE LEATHER ⁴				■				■								■
GRAPHITE SEMI-ANILINE LEATHER ⁴				■				■								■
CASHMERE SEMI-ANILINE LEATHER ⁴				■				■								■

■ Standard
□ Optional

Nissan has taken care to ensure that the color swatches presented here are the closest possible representations of actual vehicle colors. Swatches may vary slightly due to the printing process and whether viewed in daylight, fluorescent or incandescent light. Please see the actual colors at your dealer.

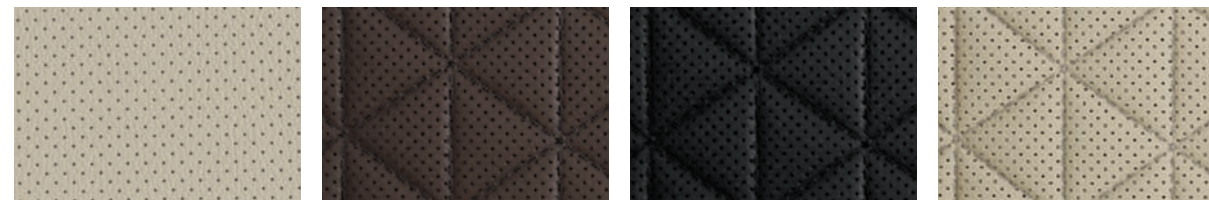
CHOOSE YOUR INTERIOR



Nissan Murano[®] Platinum AWD shown in Cashmere Semi-aniline Leather.⁴



Graphite Cloth S|SV Cashmere Cloth SV Graphite Leatherette SV Cashmere Leatherette SV Graphite Leather⁴ SL



Cashmere Leather⁴ SL Mocha Semi-aniline Leather⁴ Platinum Graphite Semi-aniline Leather⁴ Platinum Cashmere Semi-aniline Leather⁴ Platinum

CHOOSE YOUR TRIM LEVEL

S

260-hp, 3.5-liter V6 engine, Xtronic CVT® (Continuously Variable Transmission), Front-Wheel Drive, Intelligent Forward Collision Warning,¹⁸ Automatic Emergency Braking with Pedestrian Detection,⁹ Rear Automatic Braking,¹⁰ Blind Spot Warning,¹² Rear Cross Traffic Alert,¹¹ Lane Departure Warning,¹³ High Beam Assist, Intelligent Lane Intervention,¹³ Rear Sonar System,¹⁹ 18" Machine-finished aluminum-alloy wheels, Automatic on/off headlights, LED headlights with LED signature Daytime Running lights, LED taillights, Dual Zone Automatic Temperature Control with in-cabin microfilter, Nissan Intelligent Key® with Push Button Ignition, 6-way manual driver's seat, Cloth seat trim, Advanced Drive-Assist® Display,^{20, 21} Three 12-volt DC power outlets,³ Apple CarPlay® integration,² Android Auto,²² NissanConnect® 8" color display with multi-touch control,² Voice Recognition,²² Hands-free Text Messaging Assistant,⁶ Bluetooth® Hands-free Phone System,² Streaming Audio via Bluetooth,²² RearView Monitor,²³ Auxiliary audio input jack,³ Two USB ports and two USB-C ports,³ SiriusXM® Radio with 3-month trial subscription,² Intelligent Driver Alertness,²⁴ Nissan Advanced Air Bag System,²⁵ Rear Door Alert.²⁶



SV INCLUDES S EQUIPMENT PLUS:

Intelligent Cruise Control,²⁷ LED fog lights, Front and Rear Sonar System,¹⁹ Power heated outside mirrors with LED turn signal indicators, Black roof rails,¹⁴ Remote Engine Start System with Intelligent Climate Control,²⁸ 10-way power driver's seat, including 2-way power lumbar support, 4-way power front-passenger's seat, Leather-wrapped steering wheel and shift knob, Auto-dimming rearview mirror

AVAILABLE PACKAGE:
Special Edition Package



SL INCLUDES SV EQUIPMENT PLUS:

20" Machine-finished aluminum-alloy wheels, Traffic Sign Recognition,²⁹ Intelligent Around View® Monitor,¹⁵ Silver roof rails,¹⁴ Power heated outside mirrors with LED turn signal indicators and reverse tilt-down feature, Motion Activated Liftgate, Driver's seat and outside mirrors position memory, Leather-appointed seats, Heated front and rear seats, Heated steering wheel, Adjustable ambient LED interior lighting, Bose Premium Audio System with 11 speakers, including dual subwoofers, Nissan Door to Door Navigation with Premium Traffic,²² SiriusXM® Traffic and Travel Link with 3-month trial access,² HomeLink® Universal Transceiver

AVAILABLE PACKAGE:
Moonroof Package



PLATINUM INCLUDES SL EQUIPMENT PLUS:

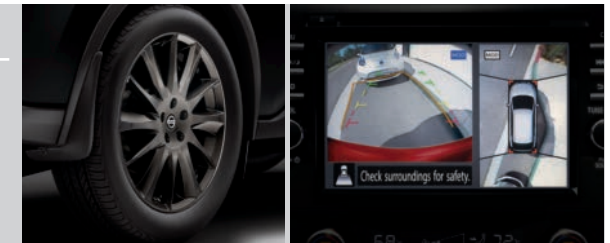
Distinctive 20" dark hyper silver aluminum-alloy wheels, Dual Panel Panoramic Moonroof, Climate-controlled front seats (heated and cooled), Semi-aniline leather-appointed seats with diamond-quilted inserts, Smooth leather-wrapped steering wheel, Contrast micro-piping for seat, door, and console inserts, Power-tilt and power-telescoping steering column with memory position, NissanConnect® Services powered by SiriusXM® with trial access to 3-year Select and 6-month Premium Plus packages²



CHOOSE YOUR PACKAGE

SPECIAL EDITION PACKAGE | SV

20" Dark Charcoal machine-finished aluminum-alloy wheels, Intelligent Around View® Monitor,¹⁵ Dual Panel Panoramic Moonroof, Leatherette seats, Heated front seats, Special Edition badge



MOONROOF PACKAGE | SL

Dual Panel Panoramic Moonroof



CHOOSE YOUR ACCESSORIES



A



B



C



D



E



F



G



H

A. Rear Cargo Cover and Carpeted Cargo Area Protector¹⁴
Keep it covered and keep it protected. (Sold separately)

B. Illuminated Kick Plates
Light up your entrance every time you open the door.

C. Yakima® ForkLift^{14, 31, 32, 33}
Give your bike a ride for once.

D. Roof Rail Crossbars^{14, 31}
Bring along more cargo and leave space inside to stretch out.

E. Pet Divider
Keep your pet secure behind 2nd-row seats.

F. Stainless Steel Sport Pedals³³
Step up your style.

G. All-Season Floor Mats
Neither rain, sleet or snow will muck up your Murano.⁹

H. All-Season Cargo Area Protector¹⁴
Preserve and protect your cargo – and your Murano.

Additional Accessories:

- Carpeted Floor Mats
- Remote Engine Start System²⁸
- Portable Cargo Organizer¹⁴
- Cargo Net¹⁴
- Hatch Tent
- Impact Sensor
- Wheel Locks
- Clear Rear Bumper Protector
- Interior Accent Lighting
- 20" Satin Black Aluminum-alloy Wheels
- Clear Door Edge Protectors
- Frameless Auto-dimming Rearview Mirror with Universal Remote
- Yakima® SkyBox 16³²
- Yakima® FatCat EVO 6³²
- Yakima® JayLow³²
- Yakima® FrontLoader³²
- Yakima® ForkLift³²
- And More

For more information and to shop online for Murano® Genuine Nissan Accessories, go to bit.ly/21Murano-Accys

GENUINE NISSAN ACCESSORIES

Turn brand-new into all you

Every Genuine Nissan Accessory is custom-fit, custom-designed and durability-tested. Each one is backed by Nissan's 3-year/36,000-mile (whichever occurs first) limited warranty (if installed by dealer at the time of purchase), and can be financed when installed by dealer at time of purchase.³⁰



Nissan Murano® Platinum AWD shown in Super Black with 20" Dark Charcoal Aluminum-alloy Wheels, Roof Rail Crossbars,^{14, 31} Satin Chrome Rear Bumper Protector, Satin Chrome Rear Underbody Trim, Splash Guards, Exterior Ground Lighting, Tow Hitch Receiver,³⁴ Hitch Ball Mount,³⁴ and Hitch Ball.³⁴

SPECIFICATIONS

Engine	S	SV	SL	PLAT
3.5-liter DOHC 24-valve V6 engine	■	■	■	■
— Horsepower – 260 hp @ 6,000 rpm				
— Torque – 240 lb-ft @ 4,400 rpm				
Continuously Variable Valve Timing Control System (CVTCS) on intake valves	■	■	■	■
Variable induction system	■	■	■	■
Nissan Direct Ignition System	■	■	■	■
Double-tipped iridium spark plugs	■	■	■	■
Electronic drive-by-wire throttle	■	■	■	■

Drivetrain	S	SV	SL	PLAT
Front-Wheel Drive (FWD)	■	■	■	■
Intelligent All-Wheel Drive (AWD) ¹	□	□	□	□
Xtronic CVT® (Continuously Variable Transmission)	■	■	■	■

Brakes	S	SV	SL	PLAT
4-wheel vented disc brakes	■	■	■	■
4-wheel Anti-Lock Braking System (ABS) – G-sensor on AWD models	■	■	■	■
Electronic Brake force Distribution (EBD)	■	■	■	■
Brake Assist ²⁵	■	■	■	■

Suspension/Chassis Bracing/Steering	S	SV	SL	PLAT
Independent strut front suspension	■	■	■	■
Multi-link independent rear suspension	■	■	■	■
Front and rear stabilizer bars	■	■	■	■
Vehicle-speed-sensitive power steering	■	■	■	■

Driver Assistance Technologies	S	SV	SL	PLAT
Cruise Control	■			
Intelligent Cruise Control ²⁷		■	■	■
Intelligent Forward Collision Warning ¹⁸	■	■	■	■
Automatic Emergency Braking with Pedestrian Detection ⁹	■	■	■	■
Intelligent Lane Intervention ¹³	■	■	■	■
Blind Spot Warning ¹²	■	■	■	■
Rear Cross Traffic Alert ¹¹	■	■	■	■
RearView Monitor ²³	■	■		
Intelligent Around View® Monitor ¹⁵		S	■	■
Rear Sonar System ¹⁹	■			
Front and Rear Sonar System ¹⁹		■	■	■
Rear Automatic Braking ¹⁰	■	■	■	■
Vehicle Dynamic Control (VDC) with Traction Control System (TCS) ³⁶	■	■	■	■
Active Brake Limited Slip (ABLS)	■	■	■	■
Hill start assist	■	■	■	■
High Beam Assist	■	■	■	■
Traffic Sign Recognition ²⁹			■	■
Intelligent Driver Alertness ²⁴	■	■	■	■

Wheels/Tires	S	SV	SL	PLAT
18" x 7.5" machine-finished aluminum-alloy wheels	■	■		
20" x 7.5" Dark Charcoal aluminum-alloy wheels		S		
20" x 7.5" machine-finished aluminum-alloy wheels			■	
Distinctive 20" x 7.5" dark hyper silver aluminum-alloy wheels				■

■ Standard □ Optional S SV Special Edition Package M SL Moonroof Package

Wheels/Tires (continued)	S	SV	SL	PLAT
P235/65R18 all-season tires	■	■		
P235/55R20 all-season tires			■	■

Exterior Features	S	SV	SL	PLAT
LED headlights with LED signature Daytime Running Lights	■	■	■	■
Automatic on/off headlights	■	■	■	■
LED fog lights	■	■	■	■
LED taillights	■	■	■	■
Black roof rails ¹⁴		■		
Silver roof rails ¹⁴			■	■
Dual Panel Panoramic Moonroof		S	M	■
Chrome door handles	■	■	■	■
Power outside mirrors with LED turn signal indicators	■			
Power heated outside mirrors with LED turn signal indicators		■		
Power heated outside mirrors with LED turn signal indicators and reverse tilt-down feature			■	■
Active Grille Shutters	■	■	■	■
Motion Activated Liftgate			■	■

Comfort/Convenience	S	SV	SL	PLAT
Rear Door Alert ²⁶	■	■	■	■
Dual Zone Automatic Temperature Control with in-cabin microfilter	■	■	■	■
Rear passenger air conditioning vents	■	■	■	■
HomeLink® Universal Transceiver		■	■	■
Driver's seat and outside mirrors position memory			■	■
Steering-wheel position memory			■	■
Steering wheel-mounted cruise control	■	■	■	■
Nissan Intelligent Key® with Push Button Ignition	■	■	■	■
Remote Engine Start System with Intelligent Climate Control ²⁸		■	■	■
Remote front windows down	■	■	■	■
Tilt and telescoping steering column	■	■	■	
Power-tilt and power-telescoping steering column				■
Variable intermittent windshield wipers	■			
Vehicle-speed-sensing variable intermittent windshield wipers			■	■
Intermittent rear window wiper	■	■	■	■
Auto-dimming rearview mirror		■	■	■
Three 12-volt DC power outlets ³	■	■	■	■
Adjustable ambient LED interior lighting			■	■
Eight cargo area tie-down hooks and rings ¹⁴	■	■	■	■

Seating/Appointments	S	SV	SL	PLAT
6-way manual driver's seat	■			
10-way power driver's seat, including 2-way power lumbar support		■	■	■
4-way manual front-passenger's seat	■			
4-way power front-passenger's seat		■	■	■
Heated front seats		S	■	
Climate-controlled front seats (heated and cooled)			■	■
Heated rear seats			■	■
60/40-split fold-down rear seatbacks with cargo area-accessible levers	■	■	■	■

Seating/Appointments (continued)	S	SV	SL	PLAT
Reclining rear seatbacks with center armrest	■	■	■	■
Cloth-wrapped A-pillar			■	■
Cloth seat trim	■			
Leatherette seats		S		
Leather-appointed seats			■	
Semi-aniline leather-appointed seats with diamond-quilted inserts				■
Leather-wrapped steering wheel		■	■	
Leather-wrapped shift knob		■	■	
Smooth leather-wrapped steering wheel				■
Heated steering wheel			■	■

Infotainment	S	SV	SL	PLAT
Advanced Drive-Assist Display ^{20, 21}	■	■	■	■
NissanConnect® 8" color display with multi-touch control ²	■	■	■	■
Nissan Door to Door Navigation with Premium Traffic ²²			■	■
SiriusXM® Traffic and Travel Link with 3-month trial access ²			■	■
NissanConnect® Services powered by SiriusXM® with trial access to 3-year Select and 6-month Premium Plus packages ²				■
Voice Recognition ²²	■	■	■	■
Apple CarPlay® integration ²	■	■	■	■
Android Auto™ ²	■	■	■	■
Hands-free Text Messaging Assistant ⁶	■	■	■	■
Bluetooth® Hands-free Phone System ²	■	■	■	■
AM/FM/CD audio system with six speakers	■	■		
Bose Premium Audio System with 11 speakers, including dual subwoofers			■	■
MP3/WMA CD playback capability	■	■	■	■
Auxiliary audio input jack ³	■	■	■	■
Two USB ports and two USB-C ports ³	■	■	■	■
Steering wheel-mounted audio controls	■	■	■	■

Safety/Security	S	SV	SL	PLAT
Nissan Advanced Air Bag System with dual-stage supplemental front air bags with seat-belt and occupant-classification sensors ²⁵	■	■	■	■
Seat-mounted side-impact supplemental air bags for front- and rear-seat outboard occupants ²⁵	■	■	■	■
Roof-mounted curtain supplemental air bags with rollover sensor for side-impact and rollover head protection for front and rear-seat outboard occupants ²⁵	■	■	■	■
Driver and front passenger supplemental knee air bag ²⁵	■	■	■	■
LATCH System (Lower Anchors and Tethers for CHildren)	■	■	■	■
Tire Pressure Monitoring System (TPMS) with individual tire pressure display and Easy-Fill Tire Alert ^{37, 38}	■	■	■	■

DIMENSIONS/CAPACITIES/MPG

Exterior Dimensions – Inches	
Wheelbase	111.2
Overall length	192.4
Overall width/height	75.4/67.8
Track width (front/rear)	64.6

Interior Dimensions (front/rear) – Inches	
Head room	39.9/39.8
Head room with Dual Panel Panoramic Moonroof	38.1/37.8
Leg room	40.5/38.7
Hip room	55.4/55.2
Shoulder room	59.5/58.9
Step-in height	15.8/15.1

Capacities	
Seating capacity	5
Interior passenger volume (front/rear)	
Without moonroof	55.7/52.4
With moonroof	53.1/49.7
Cargo volume with rear seat up (cu. ft.) ¹⁴	
Without moonroof/with moonroof	32.1/31.1
Cargo volume with rear seat down (cu. ft.) ¹⁴	
Without moonroof/with moonroof	67.0/65.0
Fuel tank (gals.)	19.0

2021 EPA Fuel Economy Estimates ⁵		
City/Highway/Combined MPG	FWD	AWD
V6	20/28/23	20/28/23

NISSAN ROADSIDE ASSISTANCE

Your peace of mind is on us. For 36 months or 36,000 miles, whichever comes first, your new Nissan is covered for the following:³⁹

- Flat-tire changes
- Trip Interruption benefits
- Jump starts
- Vehicle lockouts
- Emergency fuel delivery

Follow Nissan on:



visit [NissanUSA.com/murano](https://www.nissanusa.com/murano)

PRINTED IN POLAND



Sign up to get the latest on
Nissan vehicles, news, and events.

<https://www.nissanusa.com/brochures/request-brochure.html>



Nissan Intelligent Mobility moves you one step ahead. In cars that feel like an extension of you, helping you see more and sense more, reacting with you, and sometimes even for you. Nissan Intelligent Mobility is about a better future – moving through life with greater confidence, excitement and connection to the world around you.

¹Intelligent All-Wheel Drive cannot prevent collisions or provide enhanced traction in all conditions. Always monitor traffic and weather conditions. ²Use feature only when safe and legal. Compatible device and service required. Subject to third party service availability. For more information see NissanUSA.com/connect/legal. ³Driving is serious business and requires your full attention. If you have to use the connected device while driving, exercise extreme caution at all times so full attention may be given to vehicle operation. ⁴Leather appointments. ⁵2020 EPA Fuel Economy Estimates. ²⁰City MPG / ²¹Highway MPG / ²³Combined MPG for Murano. 2021 EPA estimates not available at time of publication. Actual mileage may vary with driving conditions. Use for comparison only. ⁶Use the text messaging feature after stopping your vehicle in a safe location. If you have to use the feature while driving, exercise extreme caution at all times so full attention may be given to vehicle operation. Compatible smartphone required. Text rates and/or data usage may apply. ⁷Nissan Safety Shield technologies can't prevent all collisions or warn in all situations. See Owner's Manual for important safety information. ⁸Availability of features vary by vehicle model year, model, trim level, packaging, and options. Please see Owner's Manual for important feature information. ⁹Automatic Emergency Braking with Pedestrian Detection cannot prevent all collisions and may not provide warning or braking in all conditions. Driver should monitor traffic conditions and brake as needed to prevent collisions. See Owner's Manual for safety information. ¹⁰Rear Automatic Braking cannot prevent all collisions and may not provide warning or braking in all conditions. Driver should always turn and check surroundings before driving and brake as needed to prevent collisions. See Owner's Manual for safety information. ¹¹Rear Cross Traffic Alert may not detect all vehicles. See Owner's Manual for safety information. ¹²Blind Spot Warning cannot prevent collisions and may not detect every object or warn in all situations. Driver should always turn and look before changing lanes. See Owner's Manual for safety information. ¹³Intelligent Lane Intervention and Lane Departure Warning only operate when lane markings are detectable. See Owner's Manual for safety information. ¹⁴Cargo shown for display purposes only. Cargo and load capacity limited by weight and distribution. Always secure cargo. Heavy loading of the vehicle with cargo, especially on the roof, will affect the handling and stability of the vehicle. ¹⁵Intelligent Around View[®] Monitor cannot eliminate blind spots and may not detect every object. Driver should always turn and check surroundings before driving. See Owner's Manual for safety information. ¹⁶Virtual composite 360[°] view. ¹⁷Extra cost option. ¹⁸Intelligent Forward Collision Warning cannot prevent collisions. See Owner's Manual for safety information. ¹⁹Sonar System may not detect every object. Driver should always check surroundings before driving. See Owner's Manual for safety information. ²⁰Driving is serious business and requires your full attention. If you have to use the feature while driving, exercise extreme caution at all times so full attention may be given to vehicle operation. ²¹Information displayed is dependent on how vehicle is equipped. ²²Never program while driving. GPS mapping may not be detailed in all areas or reflect current road status. ²³Rear View Monitor may not detect every object and does not eliminate blind spots or warn of moving objects. See Owner's Manual for safety information. ²⁴Intelligent Driver Alertness cannot provide a warning in every situation. See Owner's Manual for safety information. ²⁵Air bags are only a supplemental restraint system. Always wear your seat belt. Rear-facing child restraints should not be placed in the front-passenger's seat. All children 12 and under should ride in the rear seat properly secured in child restraints, booster seats, or seat belts according to their size. Air bags will only inflate in certain accidents. See Owner's Manual for safety information. ²⁶Does not detect people or cargo. Always check rear seat before exiting. See Owner's Manual for safety information. ²⁷Intelligent Cruise Control uses limited braking and is not a collision avoidance or warning system. Driver should monitor traffic conditions and brake as needed to prevent collisions. See Owner's Manual for safety information. ²⁸State laws may apply. Review before using. ²⁹Traffic Sign Recognition may not detect and read all traffic signs in all conditions. Driver should monitor all traffic signs and obey all traffic laws. See Owner's Manual for details. ³⁰Genuine Nissan Accessories are covered by Nissan's Limited Warranty on Genuine Nissan Replacement Parts, Genuine NISMO[®] S-Tune Parts, and Genuine Nissan Accessories for the longer of 12 months/12,000 miles (whichever occurs first) or the remaining period under the 3-year/36,000-mile (whichever occurs first) Nissan New Vehicle Limited Warranty. Terms and conditions apply. See dealer, Warranty Information Booklet, or parts.NissanUSA.com for details. ³¹Genuine Nissan Accessory Roof Rail Crossbars have a maximum weight limit of 100 lbs. ³²Not a genuine Nissan part/accessory. Not warranted by Nissan. Refer to product manufacturer for warranty details. Nissan Limited Warranty does not cover damages or failures to the vehicle caused by improper installation or alterations of any Nissan-approved accessory or component. Contact your dealer/retailer for details. ³³Vehicle shown is for illustrative purposes only. Not representative of brochure's model year/model. ³⁴Towing capability varies by configuration. See Nissan Towing Guide and Owner's Manual for additional information. ³⁵Brake Assist cannot prevent all collisions and may not provide warning or braking in all conditions. Driver should monitor traffic conditions and brake as needed to prevent collisions. See Owner's Manual for safety information. ³⁶Vehicle Dynamic Control cannot prevent collisions due to abrupt steering, carelessness, or dangerous driving techniques. It should remain on when driving, except when freeing the vehicle from mud or snow. See Owner's Manual for safety information. ³⁷Tire Pressure Monitoring System is not a substitute for regular tire pressure checks. See Owner's Manual for safety information. ³⁸Vehicle must be on for the Easy-Fill Tire Alert to operate. ³⁹Roadside Assistance available for period of 36 months/36,000 miles from the date the vehicle is delivered to the first retail buyer or otherwise put into use, whichever is earlier. Android, Android Auto, YouTube, Google, and other marks are trademarks of Google LLC. Apple CarPlay[®] and Apple Music[®] are registered trademarks of Apple, Inc. Bluetooth[®] is a registered trademark of Bluetooth SIG, Inc. Bose[®] is a registered trademark of The Bose Corporation. ChromaFlair[®] is a registered trademark of Optical Coating Laboratory, LLC. Facebook[®] is a registered trademark of Facebook, Inc. HomeLink[®] is a registered trademark of Gentex Corporation. iPhone[®] is a registered trademark of Apple, Inc. All rights reserved. iPhone[®] or other external device not included. Siri[®] and Siri[®] Eyes Free are registered trademarks of Apple, Inc. The Sirius[®] XM, and SiriusXM[®] names and all related marks and logos are trademarks of Sirius XM Radio Inc. Twitter[®] is a registered trademark of Twitter, Inc. Yakima[®] is a registered trademark of Yakima Products, Inc. This brochure is intended for general descriptive and informational purposes only. It is subject to change and does not constitute an offer, representation or warranty (express or implied) by Nissan North America, Inc. Interested parties should confirm the accuracy of any information in this brochure as it relates to a vehicle directly with Nissan North America, Inc., before relying on it to make a purchase decision. Nissan North America, Inc., reserves the right to make changes, at any time, without prior notice, in prices, colors, materials, equipment, specifications, and models and to discontinue models or equipment. Due to continuous product development and other pre- and post-production factors, actual vehicle, materials and specifications may vary from this brochure. Some vehicles shown with optional equipment. See the actual vehicle for complete accuracy. Availability and delivery times for particular models or equipment may vary. Specifications, options and accessories may differ in Hawaii, U.S. territories and other countries. For additional information on availability, options or accessories, see your Nissan dealer or contact Nissan North America, Inc. at NissanUSA.com, you'll find virtual product demonstrations, a way to "build your own Nissan," a dealer locator, and more information about key Nissan support services. Or if you'd prefer, call 1-800-NISSAN-3 for answers to specific questions about Murano[®] or any other Nissan vehicle. The Nissan names, logos, product names, feature names, and slogans are trademarks owned by or licensed to Nissan Motor Co. Ltd. and/or its North American subsidiaries. Other trademarks and trade names are those of their respective owners. **Always wear your seat belt, and please drive responsibly.** ©2020 Nissan North America, Inc. '21 Murano[®] 2103226-N-11/20-60M-KSL