



MURANO®

2024



The ride you've always wanted

It's nice to have a thrill once in a while. But to have one every time you drive? That's something special. The 2024 Murano® makes a bold first impression with expressive design and follows up with an elegant interior loaded with available tech. And with responsive power and all-season confidence, you'll even look forward to your daily commute. That's a pretty thrilling way to go.



Nissan Murano® Platinum AWD shown in Boulder Gray Pearl.¹



Available Heated and
Ventilated Front Seats

Available Semi-aniline
Leather Appointments

Available Dark Wood-
tone Finishes

Front and Rear
USB-C Ports²

Nissan Murano[®] Platinum AWD shown in Cashmere Semi-aniline Leather.³



Design is in our DNA

It's what defines us and inspires us. Beginning with available dark wood-tone finishes and semi-aniline leather-appointed seats. Every inch of style is illuminated by the available Dual Panel Panoramic Moonroof that lets in natural light with an expansive view of the sky above. And available rear heated seats and USB ports show your passengers in the back just how inspired great design can be.²



Intelligent All-Wheel Drive

Murano's available Intelligent All-Wheel Drive adapts to changing conditions, helping you get an enhanced grip on the road. The system can automatically switch from 2-wheel to 4-wheel and back for optimal fuel efficiency and confidence behind the wheel.^{4,5}



Standard Nissan Safety Shield® 360

Imagine feeling confident in almost any situation. With a suite of six standard Safety Shield 360 technologies, the Nissan Murano helps look out for you all around. This is additional peace of mind you can enjoy with every 2024 Murano.^{9, 10}

- Automatic Emergency Braking with Pedestrian Detection¹¹
- Rear Automatic Braking¹²
- Rear Cross Traffic Alert¹³
- Blind Spot Warning¹⁴
- Lane Departure Warning¹⁵
- High Beam Assist



Seamless connectivity

People to see? Places to be? Just ask Siri. Equipped with Siri voice control, Apple CarPlay brings your contacts, favorite messaging apps, Apple Music playlists, Apple Maps, and more on board to your Murano. Simply plug in your compatible iPhone and go.^{2, 6, 7, 8}

Motion Activated Liftgate

Hands full? Just kick under the rear bumper to open the available Motion Activated Liftgate, without reaching for a key or juggling whatever you're carrying.¹⁶



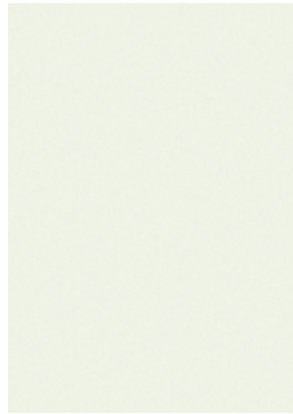
Talk to Google Assistant on Android Auto™ and get things done with your voice. Easily send messages, get directions, control media, and more. Just say, "Hey Google" or, in compatible cars, long-press the voice control button on your steering wheel to get started.^{2, 6, 7, 8}



Intelligent Around View® Monitor

Help keep your pride and rims intact. The available Intelligent Around View® Monitor makes parking easy with a virtual composite 360° bird's-eye view of your Murano. You can select from split-screen close-ups of the front, rear, and curbside views for an enhanced look. It also gives you an on-screen warning when it detects moving objects near your vehicle. We're looking at you, shopping cart.^{17, 18}

CHOOSE YOUR COLOR



Pearl White TriCoat¹



Brilliant Silver Metallic



Gun Metallic



Boulder Gray Pearl¹

	SV	ME	SL	PLT
Graphite Leatherette	<input checked="" type="checkbox"/>	<input checked="" type="checkbox"/>		
Cashmere Leatherette	<input checked="" type="checkbox"/>			
Graphite Leather ³			<input checked="" type="checkbox"/>	
Cashmere Leather ³			<input checked="" type="checkbox"/>	
Mocha Semi-aniline Leather ³				<input checked="" type="checkbox"/>
Graphite Semi-aniline Leather ³				<input checked="" type="checkbox"/>
Cashmere Semi-aniline Leather ³				<input checked="" type="checkbox"/>

	SV	ME	SL	PLT
Graphite Leatherette	<input checked="" type="checkbox"/>			
Cashmere Leatherette				
Graphite Leather ³			<input checked="" type="checkbox"/>	
Cashmere Leather ³			<input checked="" type="checkbox"/>	
Mocha Semi-aniline Leather ³				<input checked="" type="checkbox"/>
Graphite Semi-aniline Leather ³				<input checked="" type="checkbox"/>
Cashmere Semi-aniline Leather ³				<input checked="" type="checkbox"/>

	SV	ME	SL	PLT
Graphite Leatherette	<input checked="" type="checkbox"/>			
Cashmere Leatherette				
Graphite Leather ³			<input checked="" type="checkbox"/>	
Cashmere Leather ³			<input checked="" type="checkbox"/>	
Mocha Semi-aniline Leather ³				<input checked="" type="checkbox"/>
Graphite Semi-aniline Leather ³				<input checked="" type="checkbox"/>
Cashmere Semi-aniline Leather ³				<input checked="" type="checkbox"/>

	SV	ME	SL	PLT
Graphite Leatherette		<input checked="" type="checkbox"/>		
Cashmere Leatherette				
Graphite Leather ³			<input checked="" type="checkbox"/>	
Cashmere Leather ³			<input checked="" type="checkbox"/>	
Mocha Semi-aniline Leather ³				<input checked="" type="checkbox"/>
Graphite Semi-aniline Leather ³				<input checked="" type="checkbox"/>
Cashmere Semi-aniline Leather ³				<input checked="" type="checkbox"/>



Scarlet Ember Tintcoat¹



Deep Ocean Blue Metallic



Super Black

Standard

Nissan has taken care to ensure that the color swatches presented here are the closest possible representations of actual vehicle colors. Swatches may vary slightly due to the printing process and whether viewed in daylight, fluorescent or incandescent light. Please see the actual colors at your dealer.

	SV	ME	SL	PLT
Graphite Leatherette	<input checked="" type="checkbox"/>			
Cashmere Leatherette	<input checked="" type="checkbox"/>			
Graphite Leather ³			<input checked="" type="checkbox"/>	
Cashmere Leather ³			<input checked="" type="checkbox"/>	
Mocha Semi-aniline Leather ³				<input checked="" type="checkbox"/>
Graphite Semi-aniline Leather ³				<input checked="" type="checkbox"/>
Cashmere Semi-aniline Leather ³				<input checked="" type="checkbox"/>

	SV	ME	SL	PLT
Graphite Leatherette	<input checked="" type="checkbox"/>			
Cashmere Leatherette	<input checked="" type="checkbox"/>			
Graphite Leather ³			<input checked="" type="checkbox"/>	
Cashmere Leather ³			<input checked="" type="checkbox"/>	
Mocha Semi-aniline Leather ³				<input checked="" type="checkbox"/>
Graphite Semi-aniline Leather ³				<input checked="" type="checkbox"/>
Cashmere Semi-aniline Leather ³				<input checked="" type="checkbox"/>

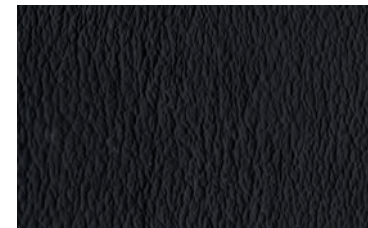
	SV	ME	SL	PLT
Graphite Leatherette	<input checked="" type="checkbox"/>			
Cashmere Leatherette	<input checked="" type="checkbox"/>			
Graphite Leather ³			<input checked="" type="checkbox"/>	
Cashmere Leather ³			<input checked="" type="checkbox"/>	
Mocha Semi-aniline Leather ³				<input checked="" type="checkbox"/>
Graphite Semi-aniline Leather ³				<input checked="" type="checkbox"/>
Cashmere Semi-aniline Leather ³				<input checked="" type="checkbox"/>

	SV	ME	SL	PLT
Graphite Leatherette	<input checked="" type="checkbox"/>	<input checked="" type="checkbox"/>		
Cashmere Leatherette	<input checked="" type="checkbox"/>			
Graphite Leather ³			<input checked="" type="checkbox"/>	
Cashmere Leather ³			<input checked="" type="checkbox"/>	
Mocha Semi-aniline Leather ³				<input checked="" type="checkbox"/>
Graphite Semi-aniline Leather ³				<input checked="" type="checkbox"/>
Cashmere Semi-aniline Leather ³				<input checked="" type="checkbox"/>

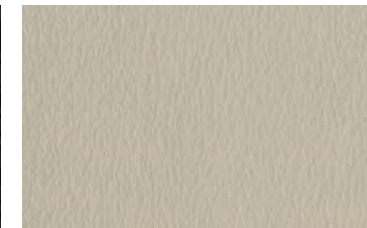
CHOOSE YOUR INTERIOR



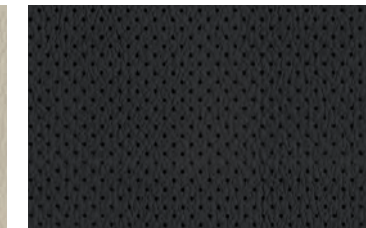
Nissan Murano[®] Platinum AWD shown in Cashmere Semi-aniline Leather.³



Graphite Leatherette
SV | Midnight Edition[®]



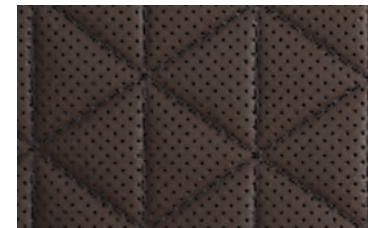
Cashmere Leatherette
SV



Graphite Leather³
SL



Cashmere Leather³
SL



Mocha Semi-aniline Leather³
Platinum



Graphite Semi-aniline Leather³
Platinum



Cashmere Semi-aniline Leather³
Platinum

CHOOSE YOUR TRIM LEVEL

SV

- 260-hp, 3.5-liter V6 engine
- Intelligent Forward Collision Warning¹⁹
- Automatic Emergency Braking with Pedestrian Detection¹¹
- Intelligent Lane Intervention¹⁵
- Blind Spot Warning¹⁴
- Rear Cross Traffic Alert¹³
- RearView Monitor²⁰
- Front and Rear Sonar System²¹
- Rear Automatic Braking¹²
- Hill start assist
- High Beam Assist
- Intelligent Driver Alertness²³
- 18" Machine-finished aluminum-alloy wheels
- LED headlights with LED signature Daytime Running Lights and LED fog lights
- LED taillights
- Black roof rails¹⁶
- Power heated outside mirrors with LED turn signal indicators
- Dual Zone Automatic Temperature Control with in-cabin microfilter
- Intelligent Cruise Control²⁴
- Nissan Intelligent Key® with Push Button Ignition
- Remote Engine Start System with Intelligent Climate Control²⁵
- 10-way power driver's seat
- 4-way power front-passenger's seat
- Leatherette seats with heated front seats
- Leather-wrapped steering wheel and shift knob
- 60/40-split fold-down rear seatbacks
- Auto-dimming rearview mirror
- 7" Advanced Drive-Assist® Display²⁷
- NissanConnect® 8" color display with multi-touch control⁶
- Apple CarPlay® integration⁶
- Android Auto™ compatibility⁶
- Two USB-A ports and two USB-C ports²

AVAILABLE PACKAGE: Midnight Edition® Package



PLATINUM INCLUDES SL EQUIPMENT PLUS:

- 20" Dark hyper silver aluminum-alloy wheels
- Power-tilt and power-telescoping steering column with memory position
- Silver roof rails¹⁶
- Climate-controlled front seats (heated and cooled)
- Semi-aniline leather-appointed seats with diamond-quilted inserts
- Smooth leather-wrapped steering wheel
- Contrast micro-piping for seat, door, and console inserts
- NissanConnect® Services powered by SiriusXM with trial access to 5-year Select and 3-year Premium Plus packages⁶



CHOOSE YOUR PACKAGE

SL INCLUDES SV EQUIPMENT PLUS:

- Intelligent Around View® Monitor¹⁷
- Traffic Sign Recognition²⁹
- 20" Machine-finished aluminum-alloy wheels
- Dual Panel Panoramic Moonroof (removes black roof rails)
- Power heated outside mirrors with LED turn signal indicators and reverse tilt-down feature
- Motion Activated Liftgate¹⁶
- Driver's seat and outside mirrors position memory
- HomeLink® Universal Transceiver
- Adjustable ambient LED interior lighting
- Heated front and rear outboard seats
- Leather-appointed seats
- Heated steering wheel
- Nissan Door to Door Navigation with Premium Traffic^{6, 8}
- SiriusXM Traffic and Travel Link with 3-month trial access⁶
- Bose Premium Audio System with 11 speakers, including dual subwoofers

MIDNIGHT EDITION® SV

- 20" Black aluminum-alloy wheels
- Black outside mirrors
- Black V-Motion grille
- Black front and rear lower bumper accents
- Black body side molding
- Black exterior badges
- Black license plate finisher
- Splash guards
- Illuminated kick plates⁴²



NISSAN MURANO® ACCESSORIES

Turn brand-new into all you

Every Genuine Nissan Accessory is custom-fit, custom-designed, and durability-tested. Each one is backed by Nissan's 3-year/36,000-mile (whichever occurs first) limited warranty (if installed by dealer at the time of new vehicle purchase) and can be financed when installed by dealer at time of new vehicle purchase.³⁰ Affiliated Yakima® accessories are not warranted by Nissan. Refer to product manufacturer for warranty details. Nissan Limited Warranty does not cover damages or failures to the vehicle caused by improper installation or alterations of any Nissan-approved accessory or component. Contact your dealer/retailer for details.³¹

For more information and to shop online for Murano® Genuine Nissan Accessories, go to bit.ly/24Murano-Accys



Nissan Murano® SV AWD shown in Gun Metallic with 20" Dark Charcoal Aluminum-Alloy Wheels, Roof Rail Crossbars,^{16, 32} Affiliated: Yakima® LoadWarrior — Cargo Basket,^{16, 31} Chrome Rear Bumper Protector, Rear Underbody Trim, Splash Guards (4-piece set), Exterior Ground Lighting w/ Logo, Tow Hitch Receiver Kit, Class I,³³ and Hitch Ball, Class II.³³

CHOOSE YOUR ACCESSORIES

A. Dual Camera Drive Recorder^{34, 35}

It's on the lookout. Dual cameras capture what is in front of the vehicle, as well as inside the cabin.

B. Tablet Holder³⁵

Keep your tablet secure and within easy reach.²

C. Virtual Key³⁶

Lock, unlock, and start your vehicle using an app on your compatible smartphone and even send a shared key virtually.

D. USB Charging Cable Set²

All your cables for all your devices — all in one place.

E. Retractable Pet Divider

Keep your pet secure behind 2nd-row seats.

F. Retractable Cargo Cover and Carpeted Cargo Area Protector

Keep it covered and keep it protected. (Items sold separately)

G. All-Season Floor Mats (4-piece set)

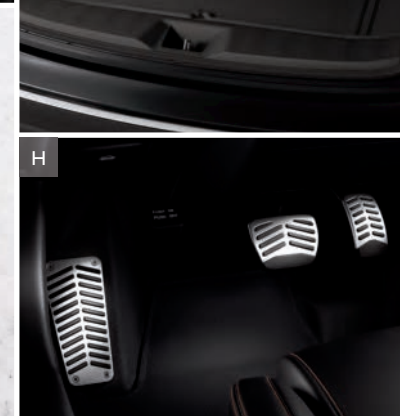
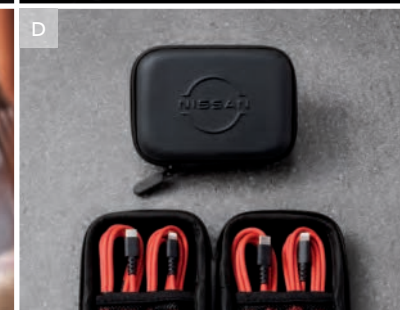
No rain, sleet, or snow will muck up your Murano.

H. Sport Pedals³⁵

Step up your style with added grip and a track-inspired look.

Additional Accessories:

- Carpeted Floor Mats (4-piece set)
- Remote Engine Start²⁵
- Removable Tote Cargo Organizer
- Cargo Net
- Hatch Tent
- Security Impact Sensor
- Wheel Locks
- Clear Rear Bumper Protector
- Interior Accent Lighting
- 20" Satin Black Aluminum-Alloy Wheels
- 20" Black Aluminum-Alloy Wheels
- Illuminated Kick Plates⁴²
- Frameless Auto-Dimming Rearview Mirror w/ Universal Remote
- Door Cup Paint Protection
- All-Season Cargo Area Protector
- Affiliated: Yakima® SkyBox 16 — Roof Cargo Box^{16, 31}
- Affiliated: Yakima® FatCat EVO 6 — Ski Carrier^{16, 31}
- Affiliated: Yakima® JayLow — Kayak Carrier^{16, 31}
- Affiliated: Yakima® FrontLoader — Upright Bike Rack^{16, 31}
- Affiliated: Yakima® ForkLift — Fork Mount Bike Rack^{16, 31}
- And More



SPECIFICATIONS

Engine	SV	SL	PLT
3.5-liter DOHC 24-valve V6 engine Horsepower — 260 hp @ 6,000 rpm Torque — 240 lb-ft @ 4,400 rpm	■	■	■
Continuously Variable Valve Timing Control System (CVTCS) on intake valves	■	■	■

Drivetrain	SV	SL	PLT
Front-Wheel Drive (FWD)	■	■	■
Intelligent All-Wheel Drive (AWD) ⁴	□	□	□
Xtronic CVT® (Continuously Variable Transmission)	■	■	■

Brakes	SV	SL	PLT
4-wheel vented disc brakes	■	■	■
4-wheel Anti-lock Braking System (ABS) — G-sensor on AWD models	■	■	■
Electronic Brake force Distribution (EBD)	■	■	■
Brake Assist ³⁷	■	■	■

Suspension/Steering	SV	SL	PLT
Independent strut front suspension	■	■	■
Multi-link independent rear suspension	■	■	■
Front and rear stabilizer bars	■	■	■
Vehicle-speed-sensitive power steering	■	■	■

Driver Assistance Technologies	SV	SL	PLT
Intelligent Cruise Control ²⁴	■	■	■
Intelligent Forward Collision Warning ¹⁹	■	■	■
Automatic Emergency Braking with Pedestrian Detection ¹¹	■	■	■
Intelligent Lane Intervention ¹⁵	■	■	■
Blind Spot Warning ¹⁴	■	■	■
Rear Cross Traffic Alert ¹³	■	■	■
RearView Monitor ²⁰	■	■	■
Intelligent Around View® Monitor ¹⁷	■	■	■
Front and Rear Sonar System ²¹	■	■	■
Rear Automatic Braking ¹²	■	■	■
Vehicle Dynamic Control (VDC) with Traction Control System (TCS) ²²	■	■	■
Active Brake Limited Slip (ABLS)	■	■	■
Hill start assist	■	■	■
High Beam Assist	■	■	■
Traffic Sign Recognition ²⁹	■	■	■
Intelligent Driver Alertness ²³	■	■	■

Wheels/Tires	SV	SL	PLT
18" Machine-finished aluminum-alloy wheels	■	■	■
20" Black aluminum-alloy wheels	M	■	■
20" Machine-finished aluminum-alloy wheels	■	■	■
20" Dark hyper silver aluminum-alloy wheels	■	■	■
P235/65R18 All-season tires	■	■	■
P235/55R20 All-season tires	M	■	■

Exterior Features	SV	SL	PLT
LED headlights with LED signature Daytime Running Lights	■	■	■
Automatic on/off headlights	■	■	■

Exterior Features (continued)	SV	SL	PLT
LED fog lights	■	■	■
LED taillights	■	■	■
Black roof rails ¹⁶	■	■	■
Silver roof rails ¹⁶	■	■	■
Dual Panel Panoramic Moonroof	■	■	■
Chrome door handles	■	■	■
Black outside mirrors	M	■	■
Black V-Motion grille	M	■	■
Black front and rear lower bumper accents	M	■	■
Black body side molding	M	■	■
Black exterior badges	M	■	■
Black license plate finisher	M	■	■
Splash guards	M	■	■
Power heated outside mirrors with LED turn signal indicators	■	■	■
Power heated outside mirrors with LED turn signal indicators and reverse tilt-down feature	■	■	■
Active Grille Shutters	■	■	■
Motion Activated Liftgate ¹⁶	■	■	■

Comfort/Convenience	SV	SL	PLT
Dual Zone Automatic Temperature Control with in-cabin microfilter	■	■	■
Rear-passenger air conditioning vents	■	■	■
HomeLink® Universal Transceiver	■	■	■
Driver's seat and outside mirrors position memory	■	■	■
Steering-wheel position memory	■	■	■
Nissan Intelligent Key® with Push Button Ignition	■	■	■
Remote Engine Start System with Intelligent Climate Control ²⁵	■	■	■
Remote front windows down	■	■	■
Tilt and telescoping steering column	■	■	■
Power-tilt and power-telescoping steering column	■	■	■
Vehicle-speed-sensing variable intermittent windshield wipers	■	■	■
Intermittent rear window wiper	■	■	■
Auto-dimming rearview mirror	■	■	■
Two 12-volt DC power outlets	■	■	■
Adjustable ambient LED interior lighting	■	■	■
Eight cargo area tie-down hooks and rings ¹⁶	■	■	■
Rear Door Alert ³⁸	■	■	■

Seating/Appointments	SV	SL	PLT
10-way power driver's seat, including 2-way power lumbar support	■	■	■
4-way power front-passenger's seat	■	■	■
Heated front seats	■	■	■
Climate-controlled front seats (heated and cooled)	■	■	■
Heated rear outboard seats	■	■	■
60/40-split fold-down rear seatbacks with cargo area-accessible levers	■	■	■
Reclining rear seatbacks with center armrest ²⁶	■	■	■
Cloth-wrapped A-pillar	■	■	■
Leatherette seats	■	■	■
Leather-appointed seats	■	■	■

Seating/Appointments (continued)	SV	SL	PLT
Semi-aniline leather-appointed seats with diamond-quilted inserts	■	■	■
Leather-wrapped steering wheel	■	■	■
Leather-wrapped shift knob	■	■	■
Smooth leather-wrapped steering wheel	■	■	■
Heated steering wheel	■	■	■
Illuminated kick plates ⁴²	M	■	■

Infotainment	SV	SL	PLT
7" Advanced Drive-Assist® Display ²⁷	■	■	■
NissanConnect® 8" color display with multi-touch control ⁶	■	■	■
Nissan Door to Door Navigation with Premium Traffic ^{6, 8}	■	■	■
SiriusXM Traffic and Travel Link with 3-month trial access ⁶	■	■	■
NissanConnect® Services powered by SiriusXM with trial access to 5-year Select and 3-year Premium Plus packages ⁶	■	■	■
Apple CarPlay® integration ⁶	■	■	■
Android Auto™ compatibility ⁶	■	■	■
Hands-free Text Messaging Assistant ⁷	■	■	■
Bluetooth® Hands-free Phone System ⁶	■	■	■
AM/FM/CD audio system with six speakers	■	■	■
Bose Premium Audio System with 11 speakers, including dual subwoofers	■	■	■
Streaming Audio via Bluetooth® ⁶	■	■	■
Auxiliary audio input jack ²	■	■	■
Two USB-A ports and two USB-C ports ²	■	■	■

Safety/Security	SV	SL	PLT
Nissan Advanced Air Bag System with dual-stage supplemental front air bags with seat-belt and occupant-classification sensors ²⁸	■	■	■
Seat-mounted side-impact supplemental air bags for front- and rear-seat outboard occupants ²⁸	■	■	■
Roof-mounted curtain supplemental air bags with rollover sensor for side-impact and rollover head protection for front and rear-seat outboard occupants ²⁸	■	■	■
Driver and front-passenger supplemental knee air bag ²⁸	■	■	■
LATCH System (Lower Anchors and Tethers for Children)	■	■	■
Tire Pressure Monitoring System (TPMS) with individual tire pressure display and Easy-Fill Tire Alert ^{39, 40}	■	■	■
Vehicle Security System	■	■	■
Nissan Vehicle Immobilizer System	■	■	■

DIMENSIONS/CAPACITIES/WEIGHTS/MPG

Exterior Dimensions — Inches	
Wheelbase	111.2
Overall length	192.4
Overall width	75.4
Overall height	67.8
Track width (front/rear)	64.6

Interior Dimensions (front/rear) — Inches	
Head room	39.9/39.8
Head room with Dual Panel Panoramic Moonroof	38.1/37.8
Leg room	40.5/38.7
Hip room	55.4/55.2
Shoulder room	59.5/58.9
Step-in height	15.8/15.1

Capacities	
Seating capacity	5
Interior passenger volume (front/rear)	
Without moonroof	55.7/52.4
With moonroof	53.1/49.7
Cargo volume with rear seat up (cu. ft.) ¹⁶	
Without moonroof/with moonroof	32.1/31.1
Cargo volume with rear seat down (cu. ft.) ¹⁶	
Without moonroof/with moonroof	67.0/65.0
Fuel tank (gals.)	19.0
Maximum towing capacity (lbs.) ³³	1,500

Curb Weights — Lbs.			
Base Total	SV	SL	PLT
FWD	3,892	3,926	4,021
AWD	4,037	4,071	4,165

2024 EPA Fuel Economy Estimates ⁵	
City/Highway/Combined MPG	
FWD	20/28/23
AWD	20/28/23

NISSAN ROADSIDE ASSISTANCE

Your peace of mind is on us. For 36 months or 36,000 miles, whichever comes first, your new Nissan is covered for the following:⁴¹

- Flat-tire changes
- Trip Interruption benefits
- Jump starts
- Vehicle lockouts
- Emergency fuel delivery

Follow Nissan on:



visit [NissanUSA.com/murano](https://www.nissanusa.com/murano)

PRINTED IN USA



Sign up to get the latest on
Nissan vehicles, news, and events.

<https://www.nissanusa.com/brochures/request-brochure.html>

¹Extra cost option. ²Driving is serious business and requires your full attention. If you have to use the connected device while driving, exercise extreme caution at all times so full attention may be given to vehicle operation. ³Leather appointments. ⁴Intelligent All-Wheel Drive cannot prevent collisions or provide enhanced traction in all conditions. Always monitor traffic and weather conditions. ⁵2024 EPA Fuel Economy Estimates. 20 City MPG / 28 Highway MPG / 23 Combined MPG for Murano. Actual mileage may vary with driving conditions. Use for comparison only. ⁶Use feature only when safe and legal. Compatible device and service required. Subject to third party service availability. For more information, see [NissanUSA.com/connect/legal](https://www.nissanusa.com/connect/legal). ⁷Use Hands Free Text Messaging when parked in a safe location. If you must use while driving, monitor traffic conditions and keep both hands on the steering wheel to prevent collisions. Compatible device required. Message and data rates may apply. ⁸Never program while driving. GPS mapping may not be detailed in all areas or reflect current road status. ⁹Availability of features vary by vehicle model year, model, trim level, packaging, and options. Please see Owner's Manual for important feature information. ¹⁰Nissan Safety Shield technologies can't prevent all collisions or warn in all situations. See Owner's Manual for important safety information. ¹¹Automatic Emergency Braking with Pedestrian Detection cannot prevent all collisions and may not provide warning or braking in all conditions. Driver should monitor traffic conditions and brake as needed to prevent collisions. See Owner's Manual for safety information. ¹²Rear Automatic Braking cannot prevent all collisions and may not provide warning or braking in all conditions. Driver should always turn and check surroundings before driving and brake as needed to prevent collisions. See Owner's Manual for safety information. ¹³Rear Cross Traffic Alert may not detect all vehicles. See Owner's Manual for safety information. ¹⁴Blind Spot Warning cannot prevent collisions and may not detect every object or warn in all situations. Driver should always turn and look before changing lanes. See Owner's Manual for safety information. ¹⁵Lane Departure Warning and Intelligent Lane Intervention only operate when lane markings are able to be detected. See Owner's Manual for safety information. ¹⁶Cargo shown for display purposes only. Cargo and load capacity limited by weight and distribution. Always secure cargo. Heavy loading of the vehicle with cargo, especially on the roof, will affect the handling and stability of the vehicle. ¹⁷Intelligent Around View[®] Monitor cannot eliminate blind spots and may not detect every object. Driver should always turn and check surroundings before driving. See Owner's Manual for safety information. ¹⁸Virtual composite 360[°] view. ¹⁹Intelligent Forward Collision Warning cannot prevent collisions. See Owner's Manual for safety information. ²⁰RearView Monitor may not detect every object and does not eliminate blind spots or warn of moving objects. See Owner's Manual for safety information. ²¹Sonar System may not detect every object. Driver should always check surroundings before driving. See Owner's Manual for safety information. ²²Vehicle Dynamic Control cannot prevent collisions due to abrupt steering, carelessness, or dangerous driving techniques. It should remain on when driving, except when freeing the vehicle from mud or snow. See Owner's Manual for safety information. ²³Intelligent Driver Alertness cannot provide a warning in every situation. See Owner's Manual for safety information. ²⁴Intelligent Cruise Control uses limited braking and is not a collision avoidance or warning system. Driver should monitor traffic conditions and brake as needed to prevent collisions. See Owner's Manual for safety information. ²⁵Remote Engine Start System to be used only in accordance with laws or rules in effect in your vehicle's location. ²⁶Do not ride in a moving vehicle when the seatback is reclined. For the most effective protection, the seat should be upright. See Owner's Manual for safety information. ²⁷Information displayed is dependent on how vehicle is equipped. Driving is serious business and requires your full attention. If you have to use the feature while driving, exercise extreme caution at all times so full attention may be given to vehicle operation. ²⁸Air bags are only a supplemental restraint system. Always wear your seat belt. Rear-facing child restraints should not be placed in the front-passenger's seat. All children 12 and under should ride in the rear seat properly secured in child restraints, booster seats, or seat belts according to their size. Air bags will only inflate in certain accidents. See Owner's Manual for safety information. ²⁹Traffic Sign Recognition may not detect and read all traffic signs in all conditions. Driver should monitor all traffic signs and obey all traffic laws. See Owner's Manual for details. ³⁰For complete information concerning warranty coverage, conditions, limitations, and exclusions, see your Nissan dealer, [parts.NissanUSA.com](https://www.nissanusa.com), or read your vehicle's Warranty Information Booklet. ³¹All non-Nissan Genuine Accessories are not warranted by Nissan. Refer to accessory product manufacturer for warranty details. Nissan limited warranty also does not cover damages or failures to the vehicle caused by improper installation, improper alterations, or use of non-Nissan-affiliated parts/accessories. Contact your Nissan dealer or read your vehicle's Warranty Information Booklet for details. ³²Genuine Nissan Accessory Roof Rail Crossbars have a maximum weight limit of 100 lbs. ³³Towing varies by configuration. See Nissan Towing Guide and Owner's Manual for additional information. Always secure cargo. ³⁴Dual Camera Drive Recorder to be used only in accordance with any laws or rules in effect in your vehicle's location that may apply to audio or video recordings of drivers and passengers. ³⁵Vehicle shown is for illustrative purposes only. Not representative of brochure's model year/model. ³⁶Compatible smartphone required. Virtual Key to be used only in accordance with laws or rules in effect in your vehicle's location. Actual maximum distance for operation will vary depending on obstructions between compatible device and vehicle. ³⁷Brake Assist cannot prevent all collisions and may not provide warning or braking in all conditions. Driver should monitor traffic conditions and brake as needed to prevent collisions. See Owner's Manual for safety information. ³⁸Rear Door Alert System does not detect people or cargo. Always check rear seat before exiting. See Owner's Manual for safety information. ³⁹Tire Pressure Monitoring System is not a substitute for regular tire pressure checks. See Owner's Manual for safety information. ⁴⁰Vehicle must be on for the Easy-Fill Tire Alert to operate. ⁴¹Roadside assistance coverage period varies by model year/model. For complete information concerning warranty coverage, conditions and exclusions, see your Nissan dealer and read the warranty information booklet for the model year/model. ⁴²Only front kick plates illuminate. Apple CarPlay[®], Apple Music[®], and Siri[®] are registered trademarks of Apple, Inc. Bluetooth[®] word mark and logos are owned by Bluetooth SIG, Inc., and any use of such marks by Nissan is under license. Bose[®] is a registered trademark of The Bose Corporation. Facebook[®] is a registered trademark of Facebook, Inc. Google, Android, Android Auto, YouTube Music and other marks are trademarks of Google LLC. Google Assistant is not available in certain languages and countries. To use Android Auto on your car display, you'll need an Android phone running Android 8 or higher, an active data plan, and the Android Auto app. HomeLink[®] is a registered trademark of Gentex Corporation. Instagram[®] is a registered trademark of Instagram, LLC. iPhone[®] is a registered trademark of Apple, Inc. All rights reserved. iPhone[®] or other external device not included. The Sirius[®], XM[®], and SiriusXM[®] names and all related marks and logos are trademarks of Sirius XM Radio Inc. Twitter[®] is a registered trademark of Twitter, Inc. Yakima[®] is a registered trademark of Yakima Products, Inc. This brochure is intended for general descriptive and informational purposes only. It is subject to change and does not constitute an offer, representation or warranty (express or implied) by Nissan North America, Inc. Interested parties should confirm the accuracy of any information in this brochure as it relates to a vehicle directly with Nissan North America, Inc., before relying on it to make a purchase decision. Nissan North America, Inc., reserves the right to make changes, at any time, without prior notice, in prices, colors, materials, equipment, specifications, and models and to discontinue models or equipment. Due to continuous product development and other pre- and post-production factors, actual vehicle, materials and specifications may vary from this brochure. Some vehicles shown with optional equipment. See the actual vehicle for complete accuracy. Availability and delivery times for particular models or equipment may vary. Specifications, options and accessories may differ in Hawaii, U.S. territories and other countries. For additional information on availability, options or accessories, see your Nissan dealer or contact Nissan North America, Inc. At [NissanUSA.com](https://www.nissanusa.com), you'll find virtual product demonstrations, a way to "build your own Nissan," a dealer locator, and more information about key Nissan support services. Or if you'd prefer, call **1-800-NISSAN-3** for answers to specific questions about Murano[®] or any other Nissan vehicle. The Nissan names, logos, product names, feature names, and slogans are trademarks owned by or licensed to Nissan Motor Co. Ltd. and/or its North American subsidiaries. Other trademarks and trade names are those of their respective owners. **Always wear your seat belt, and please drive responsibly.**

©2023 Nissan North America, Inc. ²⁴ Murano[®] 2417152-N-7/23-60K-KSL