



Innovation
that excites

2018 NV[®] PASSENGER



NISSAN Commercial Vehicles[®]



BEST-IN-CLASS

HORSEPOWER (375) AND V8 TORQUE (387 LB-FT)^{1,2}

See NV® Passenger in action at:
bit.ly/18nvpassenger-video

TAKE ON CHALLENGES. Defy the definition of what's possible with room for up to 12 and the versatility of a class-leading 324 seating configurations.³ Feel the confidence that comes from rigorously tested components backed up by America's Best Commercial Van Warranty (see dealer for limited warranty details).⁴ Don't go home, go big.⁵ The 2018 Nissan NV® Passenger. **TAKE ON TODAY.**



CAPABLE CABIN

When the driver's seat needs to turn into an office chair, NV® Passenger has you covered. With a flexible class-exclusive available multi-tasking center console, fold-down passenger seat, and plenty of power options, productivity never has to slow down.⁶

Fold-down passenger seat⁶

Flexible center console^{6,7}

Two 120-volt power outlets⁷



EXCEPTIONAL ROOM AND COMFORT

With room for up to 12 passengers, and plenty of space between rows, everyone can stretch out. And with integrated headrests, slide-out cup holders, available reading light and power outlets, the NV Passenger van takes comfort to the next level.

MASSIVE INTERIOR SPACE

With 324 seating configurations, NV Passenger gives you plenty of options for transporting gear. Remove the fourth-row seats and the volume jumps to 89.4 cubic feet. Take out the third row as well, and you've got 151.6 cubic feet of space. And with all the rows removed, there's a massive 218.9 cubic feet of cargo space ready for you to use.^{8, 9, 10}

218.9 cu. ft. of cargo space⁸

Six independently removable rear seats

10.6' maximum cargo length⁸



CLASS-LEADING **324** SEATING CONFIGURATIONS³



HARDWORKING TECHNOLOGY

Never miss a beat with the available Navigation Package. Featuring NissanConnect® with Mobile Apps, you've got a suite of high-tech features ready to give your business a boost. You'll also have standard features like Hands-free Text Messaging Assistant, and a convenient RearView Monitor.^{11, 12, 13, 14}

RearView Monitor¹³

5.8" touch-screen monitor⁷

Hands-free Text Messaging Assistant^{7, 12}

OVER **800000**¹ MILES AND 7,000 QUALITY AND DURABILITY TESTS

When it comes to making the toughest commercial vans you can buy, we go the extra distance for you. We simulate years of corrosion, soaking a vehicle with salt, baking it, then pounding it around a test track. We wreak havoc with suspension and body components by driving through potholes, dips, and over 4 x 4 beams. Special chambers crank up the heat to 140° and humidity to 95% to break down seals and age interiors. We go to such extremes because every day, you depend on your Nissan Commercial Van to do your job. And that's the motivation for us to do ours.



HEAT CHAMBER



America's Best Commercial Van Warranty **5 YEARS/100,000 MILES** BUMPER-TO-BUMPER WARRANTY⁴

See dealer for limited warranty details.

Going above and beyond is the Nissan way. After passing all of the brutal quality and durability testing, we're sure you'll have a van you can count on. To prove our confidence and our commitment, we are pleased to introduce America's Best Commercial Van Warranty, a bumper-to-bumper limited warranty for 5 years or 100,000 miles, whichever comes first. And that means we've got your back, so you can keep moving forward. For more details of the limited warranty, please go to NissanCommercialVehicles.com or ask your Nissan Business Certified Dealer.⁴



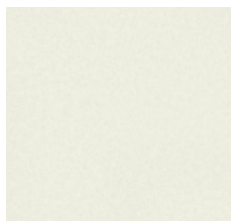
It's a Nissan Commercial Dealer that specializes in selling and servicing the entire NV[®] lineup. Only Business Certified Dealers offer exclusive commercial incentive packages while providing dedicated Commercial Vehicles Account Managers and Priority Service. We offer complimentary upfit packages as part of our exclusive commercial incentive program. We also offer Commercial Lending Programs and much more.^{9,10}

KEY BENEFITS FROM BUSINESS CERTIFIED DEALER:

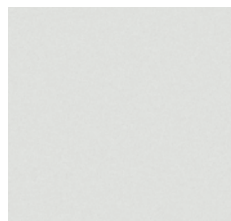
- Priority Service with Next Available Bay and Next Available Technician
- Special Commercial Lending programs, including available lines of credit
- Dedicated Commercial Vehicles Account Manager to handle commercial customer transactions at your location
- Fleet Pricing available for qualified accounts
- 24-hour towing with Roadside Assistance, including Trip Interruption reimbursement on select models¹⁴
- A commercial sales and service experience that fits your schedule
- Complimentary shuttle service
- Available Demonstrator Vehicles
- Mailings with special offers and incentives
- Access to Commercial Vehicles inventory
- Commercial service advisors to get you on the road quickly and minimize downtime
- Qualifying customers will receive support from the Commercial Upfit Incentive Program, and will be able to choose from complimentary options: cargo management equipment, graphics packages, or cash back – offers vary by model.^{9,10}



CHOOSE YOUR COLOR



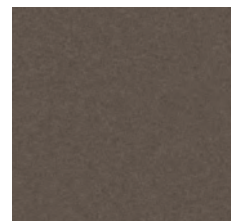
Pearl White¹⁵ QAB
S/SV/SL



Glacier White QAK
S/SV/SL



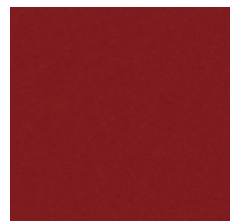
Brilliant Silver K23
S/SV/SL



Java Metallic¹⁶ CAJ
SV/SL



Arctic Blue Metallic¹⁶ RBG
SV/SL



Cayenne Red NAH
S/SV/SL



Super Black KH3
S/SV/SL

Nissan has taken care to ensure that the color swatches presented here are the closest possible representations of actual vehicle colors. Swatches may vary slightly due to the printing process and whether viewed in daylight, fluorescent or incandescent light. Please see the actual colors at your local Nissan dealer.



Nissan NV3500[®] HD SL Passenger shown in Beige Leather with optional equipment.

CHOOSE YOUR TRIM LEVEL

NV3500[®] HD S INCLUDES:

- 4.0-liter DOHC V6 engine
- 5-speed automatic transmission
- 14" Vented disc brakes front/rear
- 17" Steel wheels with 245/70R17 tires
- Black exterior trim
- Air conditioning
- Water-repellent cloth seats with vinyl wear patches on inner and outer bolsters
- 12-passenger seating capacity
- 324 Seating configurations
- Power door locks and front windows
- Cruise control with steering wheel-mounted controls
- Ten exterior roof rack-mounting points⁸
- 243° Maximum opening range for rear cargo doors
- Six cup holders and three bottle holders
- 12 Rear passenger heating and cooling vents
- Dual overhead front passenger map lights
- Side and rear window privacy glass
- AM/FM/CD audio system including 5.0" color monitor
- USB connection¹⁷
- RearView Monitor¹³
- Bluetooth[®] Hands-free Phone System¹⁴
- Streaming audio via Bluetooth[®] wireless technology¹⁴
- Hands-free Text Messaging Assistant¹²
- Four speakers
- Three assist grips
- Driver's under-seat storage tray
- Pre-wiring for electrical and telematics upfitting
- Eight standard air bags¹⁸
- Vehicle Dynamic Control (VDC)¹⁹
- Remote keyless entry

NV3500[®] HD SV INCLUDES:

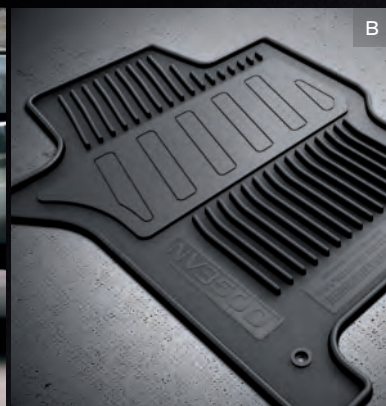
- NV3500[®] HD S contents
- 17" Chrome-clad wheels
- Rear Sonar System²⁰
- Chrome exterior trim
- Dual power outside mirrors
- Steering wheel-mounted audio controls
- Multi-functional lockable center console
- Driver's seat storage pocket
- Six rear passenger area map lights
- Two additional cup holders (eight total)
- Carpeted flooring
- Two additional 12-volt DC power outlets
- Two 120-volt AC power outlets rated at 400 watts
- Entry lighting for driver and front passenger
- 8-way power driver's seat with manual lumbar support
- MP3/WMA CD playback capability
- SiriusXM[®] Satellite Radio¹⁴
- Two additional speakers
- Vehicle Security System
- Nissan Vehicle Immobilizer System

KEY AVAILABLE PACKAGE: Navigation Package

NV3500[®] HD SL INCLUDES:

- NV3500[®] HD SV contents
- 5.6-liter DOHC V8 engine
- 7-speed automatic transmission with tow mode⁵
- Fog lights
- Front Sonar System²⁰
- Leather-appointed seats
- Heated front seats
- Leather-wrapped steering wheel
- Nissan Navigation System, including 5.8" color touch-screen monitor¹¹
- NissanConnect[®] Mobile Apps¹⁴
- Nissan Voice Recognition for audio and navigation¹¹
- SiriusXM[®] Traffic and Travel Link¹⁴
- Dual Zone Automatic Temperature Control
- Auto-dimming rearview mirror with compass
- Dual-zone air conditioning
- Power heated chrome extendable tow mirrors
- Two front tow hooks
- Class IV tow hitch receiver⁵
- 7-pin connector/brake controller pre-wiring⁵

CHOOSE YOUR ACCESSORIES



Every Genuine Nissan Accessory is custom-fit, custom-designed and durability-tested. Each one also is backed by Nissan's 5-year/100,000-mile (whichever occurs first) limited warranty (if installed by dealer at the time of purchase).²¹ Ask your dealer whether a specific Genuine Nissan Accessory may be financed when installed by the dealer at the time of purchase.

A. **Splash Guards**

Keep mud and debris where it belongs, on the splash guard.

B. **All-season Floor Mats**

Because the weather outside isn't always delightful.

C. **Hitch Ball Mount, Class III⁵**

We'll hook you up properly.

D. **Telescoping Tow Mirrors**

Telescoping mirrors slide outward for enhanced visibility.

E. **Hood Protector**

Give your hood a fighting chance against bugs and road grime.

F. **Frameless Rearview Mirror with Universal Remote**

For an enhanced look at what's directly behind you.

G. **Weight-distributing Hitch Ball Mount, Class IV⁵**

Makes for a safer ride when towing heavy loads.

H. **Nissan License Plate Frames and Valve Stem Caps**

A little bling to create envy with your NV.

Additional Accessories:

- Carpeted Floor Mats
- Splash Guards
- Side-window Deflectors
- Nissan Fleet Tracker²²
- Nissan Vehicle Tracking and Recovery System (VTRS)¹⁴
- And More

GENUINE NISSAN ACCESSORIES

TAKE YOUR BUSINESS TO THE NEXT LEVEL

For more information and to shop online for NV® Passenger Genuine Nissan Accessories, go to bit.ly/18nvpasenger-estore



To see short videos on Genuine Nissan Accessories in action, go to bit.ly/18nvpasenger-gnavideos

Nissan NV3500® HD SV Passenger shown in Brilliant Silver with Hood Protector, Telescoping Tow Mirrors, Tow Hooks, Side-window Deflectors, Body Side Moldings, and Splash Guards.

CHOOSE YOUR COMPLIMENTARY INCENTIVE

Only Business Certified Dealers offer exclusive commercial incentive packages. We offer a complimentary graphics package as part of our exclusive commercial incentive program. Choose from complimentary exterior graphics or an upfit allowance only when you buy from the Business Certified network.^{9, 10}



1. Complimentary NCV Graphics Package¹⁰

Package includes 55 square feet of custom-designed, professionally installed graphics by Modagraphics. MSRP:²³ \$1,000

Customer Responsibility: \$0

2. Commercial Upfit Allowance Incentive

This option allows eligible customers to take advantage of an upfit allowance incentive. See your local Nissan Commercial Vehicles Dealer for complete guidelines surrounding the upfit allowance amounts and eligibility requirements.

CHOOSE YOUR UPGRADE PACKAGE

Nissan Commercial Vehicles offers additional upgrade packages at a significant discount to the customer. Customer participation will vary based on package selected.

125 Square Feet MSRP:²³ \$2,100

Customer Responsibility: \$504

225 Square Feet MSRP:²³ \$3,500

Customer Responsibility: \$1,195

375 Square Feet MSRP:²³ \$5,210

Customer Responsibility: \$2,271



Visualize your NV® Passenger Ready to put your advertising strategy on wheels?

Go to NissanCommercialVehicles.com, and see how great your new NV Passenger looks with your logo.



Limitless possibilities Qualified business owners can create a custom color incorporating graphics by choosing an NCV graphics upgrade package by Modagraphics. Business Certified Dealers offer a variety of options to customize your NV Passenger, including a full vehicle wrap.²⁴



DIMENSIONS/CAPACITIES/WEIGHTS

Exterior Dimensions - Inches	
Wheelbase	146.1
Overall length	240.6
Overall width (without mirrors)	79.9
Overall width (with mirrors)	99.5
Overall width (with tow mirrors)	102.8
Overall height	84.0
Track width (front)	68.7
Track width (rear)	68.9
Sliding side door width	41.7
Rear door opening width	61.6
Rear door opening height	49.8
Step-in height (front)	18.0
Step-in height (slide door)	19.4
Step-in height (rear)	19.9
Cargo area liftover height	28.7
Angle of approach (degrees)	17.8°
Angle of departure (degrees)	16.7°
Turning diameter (ft.)	45.2

Interior Dimensions - Inches	1st/2nd rows	3rd/4th rows
Head room	42.8/39.6	39.8/39.6
Leg room	42.0/33.9	38.5/37.4
Hip room	60.6/70.4	67.2/68.6
Shoulder room	65.7/69.2	66.6/68.1

Cargo Dimensions - Inches	
EPA interior passenger volume (cu. ft.)	238.1
Total interior volume (cu. ft.)	267.0
Cargo volume (cu. ft.)	218.9
Floor behind front row (cu. ft.)	217.7
Floor behind second row (cu. ft.)	151.6
Floor behind third row (cu. ft.)	89.4
Floor behind fourth row (cu. ft.)	28.9
Maximum cargo length behind center console at vehicle center, passenger seats removed	121.9
Maximum cargo length without center console at vehicle center, passenger seats removed	150.4
Maximum cargo length behind front row, passenger seats removed	120.6
Maximum cargo length behind second row, third and fourth rows removed	86.1
Maximum cargo length behind third row, fourth row removed	51.7
Maximum cargo length behind fourth row	18.9
Maximum cargo width	64.4
Cargo width at wheelhouse floor	52.1
Maximum cargo height	51.3

Capacities		
Roof load capacity (lbs.)	500	
Seating capacity	12	
Fuel tank (gals.)	28.0	
Engine oil (qts.)	5.4 (V6)	6.5 (V8)

Maximum Payload - Lbs.			
	3500 S	3500 SV	3500 SL
V6	2,800	2,730	-
V8	-	-	2,490

Maximum Towing - Lbs.	
With standard bumper towing	2,000 ⁵
With tow hitch receiver	6,200 ²⁵
With tow hitch receiver (V8)	8,700 ²⁶

GVWR - Lbs.			
	3500 S	3500 SV	3500 SL
V6	9,520	9,520	-
V8	-	-	9,480

Curb Weights - Lbs.			
V6	6,710	6,782	-
V8	-	-	6,971

SPECIFICATIONS

Engines	NV3500 ^S	NV3500 ^{SV}	NV3500 ^{SL}
4.0-liter DOHC 24-valve V6 engine	■	■	
—Horsepower – 261 hp @ 5,600 rpm			
—Torque – 281 lb-ft @ 4,000 rpm			
Endurance 5.6-liter DOHC 32-valve V8 engine			■
—Horsepower – 375 hp @ 5,200 rpm			
—Torque – 387 lb-ft @ 3,400 rpm			
Emissions – 50-state emissions	■	■	■
Continuously Variable Valve Timing Control System (CVTCS)	■	■	■
Nissan Direct Ignition System	■	■	■
Electronic drive-by-wire throttle	■	■	■
Alternator (130 amps)	■	■	■
Iridium-tipped spark plugs	■	■	■
Heavy-duty battery			■

Drivetrain			
5-speed automatic transmission	■	■	
7-speed automatic transmission			■
Final drive ratio – 3.36:1	■	■	■

Brakes			
14.2" Front vented disc brakes	■	■	■
14.4" Rear vented disc brakes	■	■	■
4-wheel Anti-lock Braking System (ABS)	■	■	■
Electronic Brake force Distribution (EBD)	■	■	■
Brake Assist ²⁷	■	■	■

Suspension/Steering			
Front independent double-wishbone suspension	■	■	■
Multi-leaf rear suspension with solid axle	■	■	■
Front and rear stabilizer bars	■	■	■
Engine-speed-sensitive hydraulic recirculating ball steering	■	■	■
Full-length, fully boxed ladder frame	■	■	■

Wheels/Tires			
17" x 7.5" steel wheels	■		
17" x 7.5" chrome-clad wheels		■	■
LT245/70R17 all-season tires	■	■	■
Full-size spare tire	■	■	■

Exterior Features			
Black grille	■		
Black door handles and outside mirrors	■		
Black bumpers	■		
Chrome grille		■	■
Chrome door handles and outside mirrors		■	■
Chrome bumpers		■	■
Dual power outside mirrors		■	■
Power heated chrome extendable tow mirrors		■	■
Ten roof rack-mounting points ⁸	■	■	■
50/50 Split rear cargo doors with opening locking feature	■	■	■
Magnetic door locks (to secure open rear doors)	■	■	■
243° Maximum opening range for rear cargo doors	■	■	■

Exterior Features (continued)	NV3500 ^S	NV3500 ^{SV}	NV3500 ^{SL}
Sliding side door on passenger side	■	■	■
Sliding side door window with privacy glass	■	■	■
UV-reducing front windshield glass	■	■	■
Rear window defroster	■	■	■
Daytime Running Lights	■	■	■
Halogen headlights	■	■	■
Fog lights			■
Two front tow hooks			■
Front Sonar System ²⁰			■
Rear Sonar System ²⁰		■	■
Side passenger window privacy glass	■	■	■
Rear window privacy glass	■	■	■
7-pin connector and brake controller pre-wiring ⁵			■
Class IV tow hitch receiver ⁵			■

Comfort/Convenience			
Nissan Navigation System, including 5.8" color touch-screen monitor ¹¹		NP	■
NissanConnect [®] Mobile Apps ¹⁴		NP	■
Bluetooth [®] Hands-free Phone System ¹⁴	■	■	■
Nissan Voice Recognition for audio and navigation ¹¹		NP	■
SiriusXM [®] Traffic and Travel Link ¹⁴		NP	■
Hands-free Text Messaging Assistant ¹²	■	■	■
Air conditioning	■	■	■
Dual-zone Automatic Temperature Control			■
12 Rear passenger heating and cooling vents	■	■	■
Pre-wiring for electrical and telematics upfitting	■	■	■
Dual overhead front passenger map lights	■	■	■
Six rear passenger area map lights		■	■
Rear cargo light	■	■	■
Vertical sidewall design	■	■	■
Interior rearview mirror	■	■	■
Auto-dimming rearview mirror with compass			■
Three assist grips	■	■	■
Remote keyless entry	■	■	■
Power windows with driver's window one-touch auto-down	■	■	■
Power door locks with auto-locking feature	■	■	■
Cruise control with steering wheel-mounted controls	■	■	■
Tilt steering column	■	■	■
Variable intermittent windshield wipers	■	■	■
Entry lighting for driver and front passenger		■	■
Multi-functional trip computer with maintenance intervals	■	■	■
Multi-functional lockable center console with file and laptop computer storage with built-in clipboard holder		■	■
Driver's under-seat slide-out storage tray	■	■	■
Front-door map pockets	■	■	■
Six cup holders	■		
Eight cup holders		■	■
Three bottle holders	■	■	■
Three 12-volt DC power outlets (one on NV3500 [®] S)		■	■
Two 120-volt power outlets	■	■	■
RearView Monitor ¹³	■	■	■

Seating/Appointments	NV3500 ^S	NV3500 ^{SV}	NV3500 ^{SL}
324 Seating configurations	■	■	■
Gray cloth front seats with reinforced side bolster wear patches on inner and outer bolsters	■	■	
Leather-appointed seats			■
Heated front seats			■
Leather-wrapped steering wheel			■
Water-repellent seating surfaces	■	■	
4-way manual driver's seat	■		
4-way manual front passenger's seat	■	■	■
8-way power adjustable driver's seat with manual lumbar		■	■
Removable split seating (65/35 for 2nd and 3rd rows, 50/50 for 4th row)	■	■	■
Driver's seat storage pocket		■	■
Fold-down front passenger's seat with seatback tray table	■	■	■

Audio/Entertainment			
AM/FM/CD audio system, including 5.0" color monitor	■	■	
AM/FM/CD audio system, including 5.8" color touch-screen monitor		NP	■
Radio Data System (RDS)	■	■	■
MP3 CD playback capability	■	■	■
Auxiliary audio input jack ¹⁷	■	■	■
USB connection port ¹⁷	■	■	■
Steering wheel-mounted audio controls		■	■
Four speakers	■		
Six speakers		■	■
SiriusXM [®] Satellite Radio ¹⁴		■	■
Streaming audio via Bluetooth [®] wireless technology ¹⁴	■	■	■

Safety/Security			
Driver and front passenger dual-stage supplemental front air bags ¹⁸	■	■	■
Driver's and front passenger's seat-mounted side-impact supplemental air bags ¹⁸	■	■	■
Roof-mounted curtain supplemental air bags with rollover sensor for side-impact and rollover head protection for all outboard passengers ¹⁸	■	■	■
Vehicle Dynamic Control (VDC) ¹⁹ with Traction Control System (TCS)	■	■	■
2-wheel Active Brake Limited Slip (ABLS)	■	■	■
3-point ALR/ELR passenger seat belt system (ELR for driver)	■	■	■
Front seat belts with pretensioners and load limiters	■	■	■
LATCH System (Lower Anchors and Tethers for CHildren)	■	■	■
Five rear seating area tether anchors	■	■	■
Pipe-style steel side-door guard beams	■	■	■
Zone Body construction with front and rear crumple zones	■	■	■
Energy-absorbing steering column	■	■	■
Steering wheel lock	■	■	■
Break-away engine mounts	■	■	■
Slide-away brake pedal assembly	■	■	■
Tire Pressure Monitoring System (TPMS) ²⁸	■	■	■
Vehicle Security System		■	■
Nissan Vehicle Immobilizer System		■	■

PACKAGES

NP SV Navigation Package
Nissan Navigation System, including 5.8" color touch-screen monitor ¹¹
• NissanConnect Mobile Apps ¹⁴ • Nissan Voice Recognition for audio and navigation ¹¹ • SiriusXM [®] Traffic and Travel Link ¹⁴

NISSAN ROADSIDE ASSISTANCE

Your peace of mind is on us. For 36 months or 36,000 miles, whichever comes first, your new Nissan is covered for the following:¹⁴

- Flat-tire changes
- Trip Interruption benefits
- Vehicle lockouts
- Emergency fuel delivery
- Jump starts

Follow Nissan on:



visit NissanUSA.com/nvpassenger

NISSAN INTELLIGENT MOBILITY™

Nissan Intelligent Mobility guides everything we do. We're using new technologies to transform cars from mere driving machines into assistants. Together the journey is more confident, connected, and exciting. Whether it's cars that assist in the driving task, or highways that charge your EV as you go along, it's all in the very near future. And it's a future already taking shape in the Nissan you drive today.

SEE NV® PASSENGER COME TO LIFE

Go to NissanUSA.com and find an interactive brochure for NV Passenger and every Nissan in the lineup. Available on desktop or smartphone, it's the full product story - including demos, videos, and complete info on trims, colors, and accessories.

Or download the Interactive Brochure Hub app on your tablet.
Free on the App Store® and Google Play.™



¹Ward's Light Vehicle Segmentation. 2018 NV® Passenger V8 vs. 2017 Large Van Class. Based on Naturally Aspirated Gas Engine. Based on manufacturer's websites. ²Ward's Light Vehicle Segmentation. 2018 NV® Passenger with available V8 engine vs. available V8 2017 Large Van Class competitors. Based on manufacturer's websites. ³Ward's Light Vehicle Segmentation. 2018 NV® Passenger vs. 2017 Large Van Class. 12-seat passenger vans compared. Based on manufacturer's websites. ⁴Claim based on years/mileage (whichever occurs first) covered under the New Vehicle Limited Warranty basic coverage. ⁵Ward's Light Vehicle Segmentation. 2017/2018 Nissan NV® Cargo, NV® Passenger v. in-market Large Van Class; 2017/2018 Nissan NV200® v. in-market Small Van Class. Commercial Vans compared only. Nissan's New Vehicle Limited Warranty basic coverage excludes tires, corrosion coverage and federal and California emission performance and defect coverage. Other terms and conditions apply. See dealer for complete warranty details. NV200® Taxi is covered under a separate limited warranty with a different level of coverage. ⁶Towing capability varies by trim level and configuration. See Nissan Towing Guide and Owner's Manual for additional information. ⁷Ward's Light Vehicle Segmentation. Available feature. 2018 NV3500® Passenger SV vs. 2017 Large Van Class. Based on manufacturer's websites. ⁸Available feature. ⁹Cargo and load capacity limited by weight and distribution. Always secure all cargo. Heavy loading of the vehicle with cargo, especially on the roof, will affect the handling and stability of the vehicle. ¹⁰Vehicle(s) shown equipped with third-party accessories. ¹¹Owner receives a commercial upfit package designed, manufactured, tested and installed by an independent upfit supplier. All participating upfit suppliers must be National Truck Equipment Association members. Parts supplied by upfit suppliers and any damage or failures caused by installation or use of upfit parts are not covered by the Nissan New Vehicle Limited Warranty. Owner should review the upfit supplier's warranty. **Nissan is not responsible for the safety or quality of the parts or modifications made by the upfit supplier.** The Nissan Commercial Incentive Program is only available to valid business entities. Program not available to retail consumers. Certain model restrictions apply. See dealer for complete details and restrictions. ¹²Never program while driving. GPS mapping may not be detailed in all areas or reflect current road status. ¹³Use the Text Messaging feature after stopping your vehicle in a safe location. If you have to use the feature while driving, exercise extreme caution at all times so full attention may be given to vehicle operation. Compatible smartphone required. Text rates and/or data usage may apply. ¹⁴Parking aid/convenience feature. Cannot completely eliminate blind spots. May not detect every object and does not warn of moving objects. Always check surroundings and turn to look behind you before moving vehicle. ¹⁵Available services/features may be shown. Compatible connected device may be required. Only use services/features and device when safe and legal to do so. Subject to GPS and wireless network availability and connection, and system/technology limitations. Text rates/data usage/subscription may apply. Some services/features provided by companies not within Nissan or its partners' or agents' control and may be discontinued at any time. For more information, see dealer, Owner's Manual, or NissanUSA.com/connect/important-information. ¹⁶Extra cost option. ¹⁷Available on SV and SL trims only. ¹⁸Driving is serious business and requires your full attention. If you have to use the connected device while driving, exercise extreme caution at all times so full attention may be given to vehicle operation. External device not included. ¹⁹Air bags are only a supplemental restraint system; always wear your seat belt. All children 12 and under should ride in a seat properly secured in child restraints, booster seats, or seat belts according to their size. Rear-facing child restraints should not be used in NV® Passenger vehicles. Air bags will only inflate in certain accidents. See Owner's Manual for details. ²⁰VDC, which should remain on when driving except when freeing the vehicle from mud or snow, cannot prevent accidents due to abrupt steering, carelessness, or dangerous driving techniques. ²¹The Sonar System is a convenience, not a substitute for proper parking and/or backing procedures. Always check that it is safe to do so before moving vehicle. May not detect every object. ²²Genuine Nissan Accessories are covered by Nissan's Limited Warranty on Genuine Nissan Replacement Parts, Genuine NISMO® S-Tune Parts, and Genuine Nissan Accessories for the longer of 12 months/12,000 miles (whichever occurs first) or the remaining period under the 5-year/100,000-mile (whichever occurs first) Nissan New Vehicle Limited Warranty. Terms and conditions apply. See Warranty Information Booklet for details. ²³Basic plan is complimentary for first three years starting from accessory purchase date; subsequently a paid subscription is required at the then current rate. Terms, conditions, and limitations apply. ²⁴Price is Manufacturer's Suggested Retail Price (MSRP). MSRP excludes tax, title, license, options, and destination charge. Dealer sets actual price. ²⁵Vehicle Graphics Packages do not cover roof of vehicle. ²⁶With available tow hitch accessory for V6 models. ²⁷With standard factory tow hitch. See Nissan Towing Guide and Owner's Manual for additional information. ²⁸Brake Assist is only an aid to assist the driver and is not a collision warning or avoidance device. It is the driver's responsibility to be in control of the vehicle at all times. ²⁹TPMS is not a substitute for regular tire pressure checks. The App Store® is a registered trademark of Apple, Inc. Bluetooth® word mark and logos are owned by Bluetooth SIG, Inc., and any use of such marks by Nissan is under license. Facebook® is a registered trademark of Facebook, Inc. Google Play™ is a trademark of Google Inc. Modagraphics® is a registered trademark of Modagraphics, Inc. The Sirius®, XM®, and SiriusXM® names and all related marks and logos are trademarks of Sirius XM Radio Inc. Twitter® is a registered trademark of Twitter, Inc. YouTube® is a registered trademark of Google Inc. This brochure is intended for general descriptive and informational purposes only. It is subject to change and does not constitute an offer, representation or warranty (express or implied) by Nissan North America, Inc. Interested parties should confirm the accuracy of any information in this brochure as it relates to a vehicle directly with Nissan North America, Inc. before relying on it to make a purchase decision. Nissan North America, Inc. reserves the right to make changes, at any time, without prior notice, in prices, colors, materials, equipment, specifications, and models and to discontinue models or equipment. Due to continuous product development and other pre- and post-production factors, actual vehicle, materials and specifications may vary from this brochure. Some vehicles shown with optional equipment. See the actual vehicle for complete accuracy. Availability and delivery times for particular models or equipment may vary. Specifications, options and accessories may differ in Hawaii, U.S. territories and other countries. For additional information on availability, options or accessories, see your Nissan dealer or contact Nissan North America, Inc. At NissanUSA.com, you'll find virtual product demonstrations, a way to "build your own Nissan," a dealer locator, and more information about key Nissan support services. Or if you'd prefer, call 1-800-NISSAN-3 for answers to specific questions about NV® Passenger or any other Nissan vehicle. The Nissan names, logos, product names, feature names, and slogans are trademarks owned by or licensed to Nissan Motor Co. Ltd. and/or its North American subsidiaries. Other trademarks and trade names are those of their respective owners. **Always wear your seat belt, and please drive responsibly.** ©2017 Nissan North America, Inc. ¹⁸ NV Passenger 1820771-NCV-10/17-50M-CGI