



PATHFINDER®

2022



Bigger, bolder, soon to be dirtier

The all-new 2022 Pathfinder® looks to the future with a return to its roots.

Venture far past the pavement with the new rugged Intelligent 4x4 System¹ and seven Drive and Terrain Modes.² Standard Nissan Safety Shield® 360 adds confidence wherever you go,³ while elevated interior appointments and cutting-edge tech means first-class comfort for your next adventure.





Three rows, endless gateways to adventure

The redesigned Pathfinder® interior was crafted to feel like sanctuary after a long day on the trails. With three rows, and the EZ FLEX® Seating System that lets the 2nd row tilt and slide even with a car seat attached,⁵ your only worry will be getting a word in.

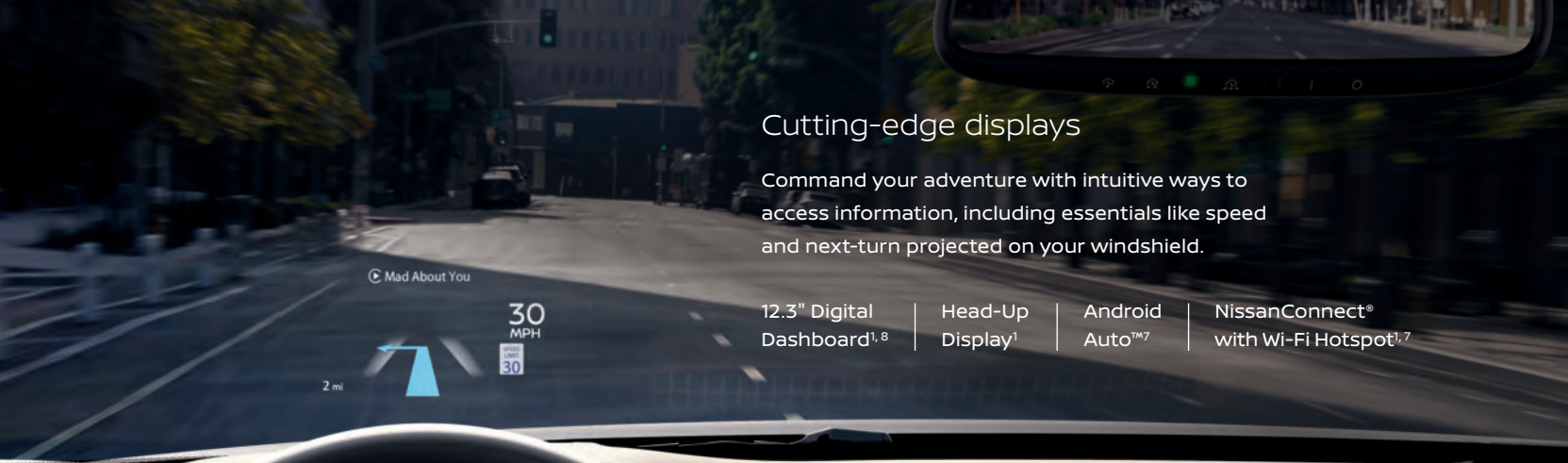
Second-row
Captain's Chairs¹

Semi-aniline Leather-appointed
Seats with Quilted Inserts¹

Tri-Zone Automatic
Temperature Control

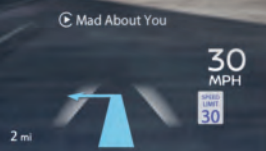
Panoramic
Moonroof¹

Nissan Pathfinder® Platinum 4WD shown in Chestnut Semi-aniline Leather with Quilted Inserts and Wireless Apple CarPlay® integration.^{6,7}



Cutting-edge displays

Command your adventure with intuitive ways to access information, including essentials like speed and next-turn projected on your windshield.



- 12.3" Digital Dashboard^{1, 8}
- Head-Up Display¹
- Android Auto™⁷
- NissanConnect® with Wi-Fi Hotspot^{1, 7}



ProPILOT Assist with Navi-link

Available ProPILOT Assist can stop and go with traffic and can help keep you centered in your lane. The new available ProPILOT Assist with Navi-link also uses mapping to know the road ahead – curves, interchanges, junctions – and can automatically slow you down for a smoother ride. The new system can even adjust your set speed based on traffic signs.¹⁰



Seven Drive and Terrain Modes, including Tow Mode

New Intelligent 4x4 System Conquer the conditions with seven modes, including Sand, Snow, and Mud/Rut.^{1, 2}

Smarter Towing With a driver-selectable Tow mode, advanced tech, including Trailer Sway Control, and a maximum capability to tow up to 6,000 lbs., you bring what you want with comfort and confidence.^{1, 9}

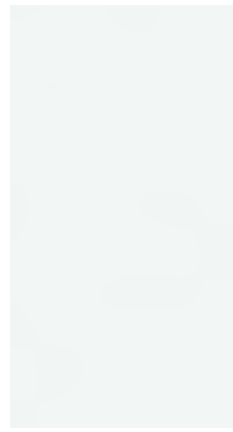


Standard Nissan Safety Shield® 360

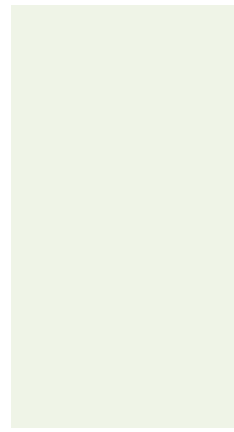
Imagine feeling confident in almost any situation. With a suite of six standard Safety Shield 360 technologies, the all-new Pathfinder® is looking out for you all around. This is peace of mind you can enjoy, mile after mile.^{3, 11}

- Automatic Emergency Braking with Pedestrian Detection¹²
- Rear Automatic Braking¹³
- Rear Cross Traffic Alert¹⁴
- Blind Spot Warning¹⁵
- Lane Departure Warning¹⁶
- High Beam Assist

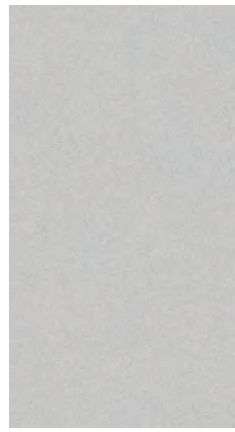
CHOOSE YOUR COLOR



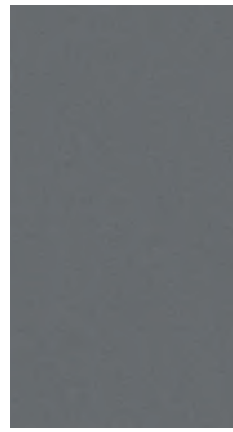
Glacier White



Pearl White TriCoat¹⁷



Brilliant Silver Metallic



Gun Metallic



Mocha Almond Pearl

S SV SL PLT

S SV SL PLT

S SV SL PLT

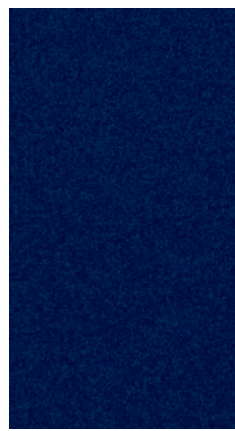
S SV SL PLT

S SV SL PLT

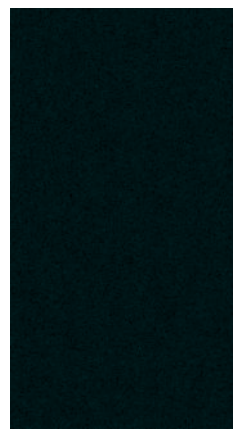
Charcoal Cloth	<input checked="" type="checkbox"/>			
Light Gray Cloth				
Charcoal Leather ⁶			<input checked="" type="checkbox"/>	
Light Gray Leather ⁶			<input checked="" type="checkbox"/>	
Chestnut Semi-aniline Leather ⁶				<input checked="" type="checkbox"/>
Charcoal Semi-aniline Leather ⁶				<input checked="" type="checkbox"/>
Light Gray Semi-aniline Leather ⁶				<input checked="" type="checkbox"/>



Scarlet Ember Tintcoat¹⁷



Deep Ocean Blue Pearl



Obsidian Green Pearl



Super Black

S SV SL PLT

S SV SL PLT

S SV SL PLT

S SV SL PLT

S SV SL PLT

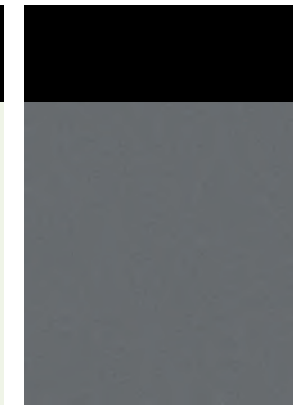
Charcoal Cloth		<input checked="" type="checkbox"/>		
Light Gray Cloth			<input checked="" type="checkbox"/>	
Charcoal Leather ⁶			<input checked="" type="checkbox"/>	
Light Gray Leather ⁶			<input checked="" type="checkbox"/>	
Chestnut Semi-aniline Leather ⁶				<input checked="" type="checkbox"/>
Charcoal Semi-aniline Leather ⁶				<input checked="" type="checkbox"/>
Light Gray Semi-aniline Leather ⁶				<input checked="" type="checkbox"/>

Standard

Nissan has taken care to ensure that the color swatches presented here are the closest possible representations of actual vehicle colors. Swatches may vary slightly due to the printing process and whether viewed in daylight, fluorescent or incandescent light. Please see the actual colors at your dealer.



Two-tone Pearl White TriCoat / Super Black¹⁷



Two-tone Gun Metallic / Super Black¹⁷



Two-tone Boulder Gray Pearl / Super Black¹⁷



Two-tone Scarlet Ember Tintcoat / Super Black¹⁷



Two-tone Obsidian Green Pearl / Super Black¹⁷

S SV SL PLT

S SV SL PLT

S SV SL PLT

S SV SL PLT

S SV SL PLT

		<input checked="" type="checkbox"/>		
			<input checked="" type="checkbox"/>	
				<input checked="" type="checkbox"/>
				<input checked="" type="checkbox"/>
				<input checked="" type="checkbox"/>

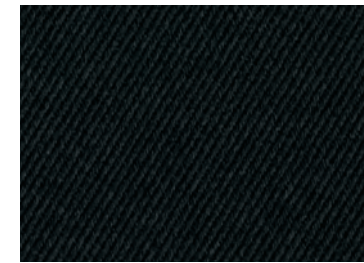
		<input checked="" type="checkbox"/>		
			<input checked="" type="checkbox"/>	
				<input checked="" type="checkbox"/>
				<input checked="" type="checkbox"/>
				<input checked="" type="checkbox"/>

		<input checked="" type="checkbox"/>		
			<input checked="" type="checkbox"/>	
				<input checked="" type="checkbox"/>
				<input checked="" type="checkbox"/>
				<input checked="" type="checkbox"/>

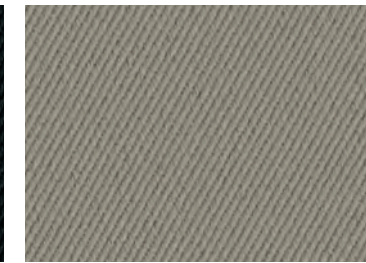
		<input checked="" type="checkbox"/>		
			<input checked="" type="checkbox"/>	
				<input checked="" type="checkbox"/>
				<input checked="" type="checkbox"/>
				<input checked="" type="checkbox"/>

		<input checked="" type="checkbox"/>		
			<input checked="" type="checkbox"/>	
				<input checked="" type="checkbox"/>
				<input checked="" type="checkbox"/>
				<input checked="" type="checkbox"/>

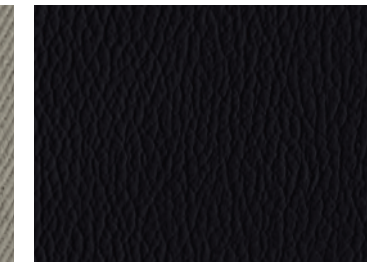
CHOOSE YOUR INTERIOR



Charcoal Cloth
S|SV



Light Gray Cloth
SV



Charcoal Leather⁶
SL



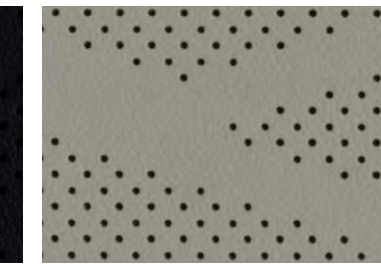
Light Gray Leather⁶
SL



Chestnut Semi-aniline Leather⁶
Platinum



Charcoal Semi-aniline Leather⁶
Platinum



Light Gray Semi-aniline Leather⁶
Platinum

S SV SL PLT

S SV SL PLT

S SV SL PLT

S SV SL PLT

S SV SL PLT

Charcoal Cloth	<input checked="" type="checkbox"/>			
Light Gray Cloth		<input checked="" type="checkbox"/>		
Charcoal Leather ⁶			<input checked="" type="checkbox"/>	
Light Gray Leather ⁶			<input checked="" type="checkbox"/>	
Chestnut Semi-aniline Leather ⁶				<input checked="" type="checkbox"/>
Charcoal Semi-aniline Leather ⁶				<input checked="" type="checkbox"/>
Light Gray Semi-aniline Leather ⁶				<input checked="" type="checkbox"/>

CHOOSE YOUR TRIM LEVEL

S

3.5-liter V6 engine with 284 hp and 259 lb-ft of torque, 9-speed automatic transmission, Available Intelligent 4x4,² Hill descent control (4WD only), Trailer Sway Control,¹⁸ Intelligent Forward Collision Warning,¹⁹ Automatic Emergency Braking with Pedestrian Detection,¹² Lane Departure Warning,¹⁶ Blind Spot Warning,¹⁵ Rear Cross Traffic Alert,¹⁴ Rear Sonar System,²⁰ Rear Automatic Braking,¹³ High Beam Assist, Intelligent Driver Alertness,²¹ 18" Dark-painted aluminum-alloy wheels, Intelligent Auto Headlights, LED headlights with LED Daytime Running Lights, Tri-Zone Automatic Temperature Control, Rear Door Alert,²² Nissan Intelligent Key[®] with Push Button Ignition, Two 12-volt DC power outlets,²³ Four cargo tie-down hooks,²⁴ Cargo-area under-floor storage,²⁴ 7" Advanced Drive-Assist[®] Display,⁸ NissanConnect[®] 8" touch-screen display,⁷ Apple CarPlay[®] integration,⁷ Android Auto,⁷ Voice Recognition,²⁵ Hands-free Text Messaging Assistant,²⁶ Bluetooth[®] Hands-free Phone System,⁷ Two USB-A ports and two USB-C ports,²³ Streaming Audio via Bluetooth,²⁷ EZ FLEX[®] Seating System featuring LATCH AND GLIDE[®] and 3rd-row 60/40-split fold-flat reclining bench seat,⁵ Nissan Advanced Air Bag System²⁷



Standard Safety Shield[®] 360³

SV INCLUDES S EQUIPMENT PLUS:

ProPILOT Assist,¹⁰ Intelligent Lane Intervention,¹⁶ Intelligent Blind Spot Intervention,¹⁵ Heated outside mirrors, Black roof rails,²⁴ Remote Engine Start System²⁸ with Intelligent Climate Control, 10-way power adjustable driver's seat, including 2-way power lumbar, Heated front seats, Leather-wrapped steering wheel, NissanConnect[®] Services powered by SiriusXM[®] with trial access to 5-year Select and 6-month Premium packages,⁷ NissanConnect[®] with Wi-Fi Hotspot⁷

KEY AVAILABLE PACKAGE: SV Premium Package



SL INCLUDES SV EQUIPMENT PLUS:

ProPILOT Assist with Navi-link,¹⁰ Intelligent Around View[®] Monitor,²⁹ Front and Rear Sonar System,²⁰ Traffic Sign Recognition,³⁰ 18" Machine-finished aluminum-alloy wheels, LED fog lights, Silver roof rails,²⁴ Power liftgate, Rear sunshades, Rear door remote keyless entry, Auto-dimming inside rearview mirror, HomeLink[®] Universal Transceiver, 4-way power adjustable front-passenger's seat, Leather-appointed seats (1st and 2nd row), Heated steering wheel, Gun Metallic brushed interior trim, NissanConnect[®] 9" touch-screen display,⁷ Nissan Door to Door Navigation with Premium Traffic,^{7, 25} NissanConnect[®] Services powered by SiriusXM[®] with trial access to 5-year Plus, 5-year Select and 6-month Premium packages,⁷ Three USB-A ports and two USB-C ports,²³ Wireless Apple CarPlay[®] integration,⁷ SiriusXM[®] Traffic and Travel Link with trial access to 5-year Select, 5-year Plus and 6-month Premium packages⁷

KEY AVAILABLE PACKAGE: SL Premium Package



PLATINUM INCLUDES SL EQUIPMENT PLUS:

20" Machine-finished aluminum-alloy wheels, Motion Activated Liftgate, Panoramic Moonroof, Tow hitch receiver with 7-pin wiring harness,¹⁸ Power folding outside mirrors, Outside mirrors with reverse tilt-down feature, Chrome body side moldings, Power tilt and telescoping steering column, Interior accent lighting, Memory System - driver's seat, steering wheel, and outside mirrors, Rain-sensing windshield wipers, 120-volt AC power outlet,³¹ Second-row fold-down captain's chairs with tip-up easy entry for third row, Second-row removable center console with cup holders, Semi-aniline leather-appointed seats with quilted inserts, Climate-controlled front seats (heated and cooled), Heated outboard 2nd-row seats, Smooth leather-wrapped steering wheel, Bronze Metallic brushed interior trim, Stainless steel front kick plates, Digital dashboard with fully digital gauges,⁸ Head-Up Display, Bose Premium Audio System with 13 speakers, including dual-driver woofer, Four USB-A ports and two USB-C ports,²³ Wireless charger,²³ Driver seat-mounted front-center supplemental air bag²⁷



CHOOSE YOUR PACKAGE

PREMIUM PACKAGE | SV

Panoramic Moonroof, Power liftgate, Second-row fold-down captain's chairs with tip-up easy entry for third row, Second-row removable center console with cup holders, Tow hitch receiver with 7-pin wiring harness¹⁸



PREMIUM PACKAGE | SL

20" Dark-painted aluminum-alloy wheels, Panoramic Moonroof, Second-row fold-down captain's chairs with tip-up easy entry for third row, Second-row removable center console with cup holders, Heated outboard 2nd-row seats, Bose Premium Audio System with 13 speakers, including dual-driver woofer, Wireless charger,²³ Tow hitch receiver with 7-pin wiring harness¹⁸



CHOOSE YOUR ACCESSORIES



- A. **All-Season Cargo Area and Seatback Protector²⁴**
Because your cargo area has to put up with a lot.
- B. **Black Rear Bumper Protector**
Protect your bumper from dings and scratches in style.
- C. **Tow Hitch Mount, Class III and Tow Hitch Ball, Class III¹⁸**
If you're going to get hitched, do it right.
- D. **Pass-Thru Light**
Starts every trip with a warm glow.
- E. **Portable Cargo Organizer²⁴**
A tidy Pathfinder is a happy Pathfinder.
- F. **Under-floor Storage Dividers (2-piece set)²⁴**
Keep gear out of sight and in its place.
- G. **All-Season Floor Mats - High Wall Liner (4-piece set)**
Never question stepping in from the rain or snow.
- H. **Illuminated Kick Plates**
A grand entry, every time.

Additional Accessories:

- Virtual Key³³
- Drive Recorder³³
- Carpeted Floor Mats (4-piece set)
- Console Net
- Interior Lighting - LED Upgrade
- Impact Sensor
- Carpeted Cargo Area Protector²⁴
- Cargo Net²⁴
- Clear Hood Protector
- Clear Door Edge Protector
- Black Mirror Caps
- Additional Affiliated Yakima[®] Accessories³⁴
- And More

For more information and to shop online for Pathfinder[®] Genuine Nissan Accessories, go to bit.ly/22Pathfinder-Accys

NISSAN PATHFINDER[®] ACCESSORIES

Push adventure to new heights

Every Genuine Nissan Accessory is custom-fit, custom-designed and durability-tested. Each one is also backed by Nissan's 3-year/36,000-mile (whichever occurs first) limited warranty (if installed by dealer at the time of purchase), and can be financed when installed by dealer at time of purchase.³² Affiliated Yakima[®] accessories are not warranted by Nissan. Refer to product manufacturer for warranty details. Nissan Limited Warranty does not cover damages or failures to the vehicle caused by improper installation or alterations of any Nissan approved accessory or component. Contact your dealer/retailer for details.



To see Genuine Nissan Accessories in action, go to: bit.ly/22Pathfinder-Video

Front/Left: **Nissan Pathfinder[®] SL 4WD** shown in Two-tone Scarlet Ember Tintcoat / Super Black with Splash Guards, Black Roof Rail Crossbars,^{4, 24} Side-Window Deflectors,³³ Black V-Motion Grille, Satin Chrome Fog Light Finisher, Running Boards, Exterior Ground Lighting, Dark Chrome Body Side Molding, Affiliated Yakima[®] JayLow Kayak Carrier.^{4, 24, 34}

Rear/Right: **Nissan Pathfinder[®] SL 4WD** shown in Two-tone Pearl White TriCoat / Super Black with Splash Guards, Black Roof Rail Crossbars,^{4, 24} Side-Window Deflectors,³³ Running Boards, Exterior Ground Lighting, Dark Chrome Body Side Molding, Black Rear Bumper Protector, Black Rear Badging, Tow Hitch Receiver, Class III, Tow Hitch Finisher and Trailer Tow Harness (4-pin),¹⁸ Affiliated Yakima[®] OffGrid Cargo Basket,^{4, 24, 34} Affiliated Yakima[®] LiteRider 2 Hitch Mount Bike Rack.^{24, 34}

SPECIFICATIONS

Engine	S	SV	SL	PLT
3.5-liter DOHC 24-valve Direct Injection Gasoline™ (DIG) V6 engine	■	■	■	■
— Horsepower – 284 hp @ 6,400 rpm	■	■	■	■
— Torque – 259 lb-ft @ 4,800 rpm	■	■	■	■
Continuously Variable Valve Timing Control System (CVTCS)	■	■	■	■
Idle stop/start	■	■	■	■

Drivetrain	S	SV	SL	PLT
Front-Wheel Drive (FWD)	■	■	■	■
Intelligent 4x4 ²	□	□	□	□
9-speed automatic transmission with Manual Mode	■	■	■	■
Electronic shifter	■	■	■	■
Paddle shifters	■	■	■	■
Drive and Terrain switch with five modes	■	■	■	■
Drive and Terrain Mode dial selector with seven modes	□ ³⁵	□ ³⁵	□ ³⁵	□ ³⁵

Brakes	S	SV	SL	PLT
Front and rear vented disc brakes	■	■	■	■
4-wheel Anti-lock Braking System (ABS)	■	■	■	■
Electronic Brake force Distribution	■	■	■	■
Brake Assist ³⁶	■	■	■	■
Electronic parking brake	■	■	■	■

Suspension/Steering	S	SV	SL	PLT
Independent strut front suspension	■	■	■	■
Independent multi-link rear suspension	■	■	■	■
Dual Flow Path® shock absorbers	■	■	■	■
Front and rear stabilizer bars	■	■	■	■

Driver Assistance Technologies	S	SV	SL	PLT
Cruise control	■			
ProPILOT Assist ¹⁰		■		
ProPILOT Assist with Navi-link ¹⁰			■	■
Intelligent Forward Collision Warning ¹⁹	■	■	■	■
Automatic Emergency Braking with Pedestrian Detection ¹²	■	■	■	■
Lane Departure Warning ¹⁶	■	■	■	■
Intelligent Lane Intervention ¹⁶	■	■	■	■
Blind Spot Warning ¹⁵	■	■	■	■
Intelligent Blind Spot Intervention ¹⁵	■	■	■	■
Rear Cross Traffic Alert ¹⁴	■	■	■	■
Intelligent Around View® Monitor ²⁹	■	■	■	■
Rear Sonar System ²⁰		■		
Front and Rear Sonar System ²⁰			■	■
Rear Automatic Braking ¹³	■	■	■	■
High Beam Assist	■	■	■	■
Vehicle Dynamic Control (VDC) ³⁷ with Traction Control System (TCS)	■	■	■	■
Hill start assist	■	■	■	■
Hill descent control (4WD only)	□	□	□	□
Trailer Sway Control ¹⁸	■	■	■	■
Automatic Brake Hold	■	■	■	■
Intelligent Driver Alertness ²¹	■	■	■	■
Traffic Sign Recognition ³⁰			■	■

Wheels/Tires	S	SV	SL	PLT
18" Dark-painted aluminum-alloy wheels	■	■		
18" Machine-finished aluminum-alloy wheels			■	
20" Dark-painted aluminum-alloy wheels			P2	
20" Machine-finished aluminum-alloy wheels				■
P255/60R18 All-season tires	■	■	■	
P255/50R20 All-season tires			P2	■

Exterior Features	S	SV	SL	PLT
Intelligent Auto Headlights	■	■	■	■
LED headlights with LED Daytime Running Lights	■	■	■	■
LED taillights	■	■	■	■
LED fog lights			■	■
Power body-color outside mirrors with LED turn signal indicators	■	■	■	■
Heated outside mirrors		■	■	■
Black roof rails ²⁴		■	□	□
Silver roof rails ²⁴			■	■
Rear spoiler	■	■	■	■
Chrome body side molding				■
Tow hitch receiver with 7-pin wiring harness ¹⁸		P1	P2	■
Power liftgate		P1	■	
Motion Activated Liftgate				■
Panoramic Moonroof		P1	P2	■
Rear privacy glass	■	■	■	■

Comfort/Convenience	S	SV	SL	PLT
Tri-Zone Automatic Temperature Control	■	■	■	■
Rear passenger vents	■	■	■	■
Rear Door Alert ²²	■	■	■	■
Rear sunshades			■	■
Front door remote keyless entry	■	■	■	■
Rear door remote keyless entry			■	■
Nissan Intelligent Key® with Push Button Ignition	■	■	■	■
Remote Engine Start System ²⁸ with Intelligent Climate Control		■	■	■
Power tilt and telescoping steering column			■	■
Auto-dimming inside rearview mirror			■	■
HomeLink® Universal Transceiver			■	■
Power folding outside mirrors with reverse tilt-down feature				■
Interior accent lighting				■
Variable intermittent flat-blade windshield wipers	■	■	■	■
Rain-sensing windshield wipers				■
Intermittent rear window wiper	■	■	■	■
Two 12-volt DC power outlets ²³				■
120-volt AC power outlet ³¹				■
Sun visors with illuminated vanity mirrors	■	■	■	■
Overhead LED map lights	■	■	■	■

Seating/Appointments	S	SV	SL	PLT
Four cargo tie-down hooks ²⁴	■	■	■	■
Cargo-area under-floor storage ²⁴	■	■	■	■
6-way manual driver's seat	■			
10-way power driver's seat with 2-way power lumbar		■	■	■
4-way manual front-passenger's seat	■	■		

Seating/Appointments (continued)	S	SV	SL	PLT
4-way power front-passenger's seat			■	■
Memory System - driver's seat, steering wheel, and outside mirrors				■
Second-row fold-down captain's chairs		P1	P2	■
Second-row removable center console with cup holders		P1	P2	■
EZ FLEX® Seating System featuring LATCH AND GLIDE® and 3rd-row 60/40-split fold-flat reclining bench seat ⁵	■	■	■	■
Leather-appointed seats (1st and 2nd row)			■	
Semi-aniline leather-appointed seats with quilted inserts (1st and 2nd row)				■
Leather-wrapped steering wheel		■	■	
Smooth leather-wrapped steering wheel				■
Heated front seats		■	■	■
Climate-controlled front seats (heated and cooled)				■
Heated outboard 2nd-row seats			P2	■
Heated steering wheel			■	■
Stainless steel front kick plates				■

Infotainment	S	SV	SL	PLT
7" Advanced Drive-Assist® Display ⁸	■	■	■	
Digital dashboard with fully digital gauges ⁸				■
NissanConnect® 8" color touch-screen display ⁷	■	■		
NissanConnect® 9" color touch-screen display ⁷			■	■
Nissan Door to Door Navigation with Premium Traffic ^{7, 25}				■
Head-Up Display		■	■	■
Voice Recognition ²⁵	■	■	■	■
NissanConnect® Services powered by SiriusXM® with trial access to 5-year Select and 6-month Premium packages ⁷		■		
NissanConnect® Services powered by SiriusXM® with trial access to 5-year Select, 5-year Plus, and 6-month Premium packages ⁷			■	■
Apple CarPlay® integration ⁷	■	■		
Wireless Apple CarPlay® integration ⁷			■	■
Android Auto™ ⁷	■	■	■	■
NissanConnect® with Wi-Fi Hotspot ⁷		■	■	■
SiriusXM® Traffic and Travel Link with 3-month trial subscription ⁷			■	■
Hands-free Text Messaging Assistant ²⁶	■	■	■	■
Bluetooth® Hands-free Phone System ⁷	■	■	■	■
Bose Premium Audio System with 13 speakers, including dual-driver woofer			P2	■
Two USB-A ports and two USB-C ports ²³	■	■		
Three USB-A ports and two USB-C ports ²³			■	
Four USB-A ports and two USB-C ports ²³				■
Wireless charger ²³			P2	■
Streaming Audio via Bluetooth® ⁷	■	■	■	■
SiriusXM® Radio with 3-month trial subscription ⁷	■	■	■	■

Safety/Security	S	SV	SL	PLT
Nissan Advanced Air Bag System with dual-stage supplemental front air bags with seat belt and occupant-classification sensors ²⁷	■	■	■	■
Seat-mounted side-impact supplemental air bags for front- and rear-seat outboard occupants ²⁷	■	■	■	■

Safety/Security (continued)	S	SV	SL	PLT
Driver seat-mounted front-center supplemental air bag ²⁷				■
Driver and front-passenger supplemental knee air bags ²⁷	■	■	■	■
Roof-mounted curtain supplemental air bags with rollover sensor for outboard occupant head protection for all rows ²⁷	■	■	■	■
LATCH System (Lower Anchors and Tethers for Children)	■	■	■	■
Tire Pressure Monitoring System (TPMS) with Easy-Fill Tire Alert ^{38, 39}	■	■	■	■
Vehicle Security System	■	■	■	■

CAPACITIES/WEIGHTS/MPG

Capacities	S	SV	SL	PLT
Seating capacity				Up to 8
Interior passenger volume without moonroof (cu. ft.)				148

Maximum Towing Capacity (Lbs.) ¹⁸	S	SV	SL	Platinum
Standard	3,500	6,000 ^{1, 8}	6,000 ^{1, 8}	6,000 ⁸

Curb Weights (Lbs.)	S	SV	SL	Platinum
Base Total				
2WD	4,317	4,331	4,354	4,470
4WD	4,469	4,484	4,506	4,625

2022 EPA Fuel Economy Estimates ⁴⁰	S	SV	SL	Platinum
City/Hwy/Combined MPG (2WD)	21/26/23	21/26/23	21/26/23	21/26/23
City/Hwy/Combined MPG (4WD)	21/27/23	21/27/23	21/27/23	20/25/22
— Actual mileage may vary with driving conditions – use for comparison only.				

NISSAN ROADSIDE ASSISTANCE

Your peace of mind is on us. For 36 months or 36,000 miles, whichever comes first, your new Nissan is covered for the following:⁴¹

- Flat-tire changes
- Trip Interruption benefits
- Jump starts
- Vehicle lockouts
- Emergency fuel delivery

Follow Nissan on:



visit [NissanUSA.com/pathfinder](https://www.nissanusa.com/pathfinder)

PRINTED IN USA



Sign up to get the latest on
Nissan vehicles, news, and events.

<https://www.nissanusa.com/brochures/request-brochure.html>



Nissan Intelligent Mobility moves you one step ahead. In cars that feel like an extension of you, helping you see more and sense more, reacting with you, and sometimes even for you. Nissan Intelligent Mobility is about a better future – moving through life with greater confidence, excitement and connection to the world around you.

¹Available feature. ²Intelligent 4x4 cannot prevent collisions or provide enhanced traction in all conditions. Always monitor traffic and weather conditions. ³Nissan Safety Shield technologies can't prevent all collisions or warn in all situations. See Owner's Manual for important safety information. ⁴Genuine Nissan Accessory Roof Rail Crossbars have a maximum weight limit of 100 lbs. ⁵Do not perform slide forward function with the Child Restraint System occupied. ⁶Leather appointments. ⁷Use feature only when safe and legal. Compatible device and service required. Subject to third party service availability. For more information see NissanUSA.com/connect/legal. ⁸Information displayed is dependent on how vehicle is equipped. Driving is serious business and requires your full attention. If you have to use the feature while driving, exercise extreme caution at all times so full attention may be given to vehicle operation. ⁹Up to 6,000 lbs. maximum towing capacity for 2022 Pathfinder®. Towing capacity varies by configuration. See Nissan Towing Guide and Owner's Manual for additional information. Always secure cargo. ¹⁰ProPILOT Assist and ProPILOT Assist with Navi-link cannot prevent collisions. It is the driver's responsibility to be in control of the vehicle at all times. Always monitor traffic conditions and keep both hands on the steering wheel. System operates only when lane markings are detected. Does not function in all weather, traffic and road conditions. System has limited control capability and the driver may need to steer, brake or accelerate at any time to maintain safety. See Owner's Manual for safety information. ¹¹Availability of features vary by vehicle model year, model, trim level, packaging, and options. Please see Owner's Manual for important feature information. ¹²Automatic Emergency Braking with Pedestrian Detection cannot prevent all collisions and may not provide warning or braking in all conditions. Driver should monitor traffic conditions and brake as needed to prevent collisions. See Owner's Manual for safety information. ¹³Rear Automatic Braking cannot prevent all collisions and may not provide warning or braking in all conditions. Driver should monitor traffic conditions and brake as needed to prevent collisions. See Owner's Manual for safety information. ¹⁴Rear Cross Traffic Alert may not detect all vehicles. See Owner's Manual for safety information. ¹⁵Blind Spot Warning and Intelligent Blind Spot Intervention cannot prevent all collisions and may not detect every object or warn in all situations. Driver should always turn and look before changing lanes. See Owner's Manual for safety information. ¹⁶Lane Departure Warning and Intelligent Lane Intervention operate only when lane markings are able to be detected. See Owner's Manual for safety information. ¹⁷Extra cost option. ¹⁸Please follow Towing Guidelines. Towing capability varies by configuration. See Nissan Towing Guide and Owner's Manual for additional information. ¹⁹Intelligent Forward Collision Warning cannot prevent collisions. See Owner's Manual for safety information. ²⁰Sonar System may not detect every object. Driver should always check surroundings before driving. See Owner's Manual for safety information. ²¹Intelligent Driver Alertness cannot provide a warning in every situation. See Owner's Manual for safety information. ²²Rear Door Alert System does not detect people or cargo. Always check rear seat before exiting. See Owner's Manual for safety information. ²³Driving is serious business and requires your full attention. If you have to use the connected device while driving, exercise extreme caution at all times so full attention may be given to vehicle operation. ²⁴Cargo shown for display purposes only. Cargo and load capacity limited by weight and distribution. Always secure cargo. Heavy loading of the vehicle with cargo, especially on the roof will affect the handling and stability of the vehicle. ²⁵Never program while driving. GPS mapping may not be detailed in all areas or reflect current road status. ²⁶Use Hands Free Text Messaging when parked in a safe location. If you must use while driving, monitor traffic conditions and keep both hands on the steering wheel to prevent collisions. Compatible device required. Message and data rates may apply. ²⁷Air bags are only a supplemental restraint system. Always wear your seat belt. Rear-facing child restraints should not be placed in the front-passenger's seat. All children 12 and under should ride in the rear seat properly secured in child restraints, booster seats, or seat belts according to their size. Air bags will only inflate in certain accidents. See Owner's Manual for safety information. ²⁸Remote Engine Start System to be used only in accordance with any laws or rules in effect in your vehicle's location. ²⁹Intelligent Around View® Monitor cannot eliminate blind spots and may not detect every object. Driver should always turn and check surroundings before driving. See Owner's Manual for safety information. ³⁰Traffic Sign Recognition may not detect and read all traffic signs in all conditions. Driver should monitor all traffic signs and obey all traffic laws. See Owner's Manual for details. ³¹120-volt power outlet is intended only for use with compatible items. Please check specifications of wattage and amperage of items to be plugged in to determine compatibility. ³²Genuine Nissan Accessories are covered by Nissan's Limited Warranty on Genuine Nissan Replacement Parts, Genuine NISMO® S-Tune Parts, and Genuine Nissan Accessories for the longer of 12 months/12,000 miles (whichever occurs first) or the remaining period under the 3-year/36,000-mile (whichever occurs first) Nissan New Vehicle Limited Warranty. Terms and conditions apply. See dealer, Warranty Information Booklet, or parts.NissanUSA.com for details. ³³Late availability. ³⁴Not a genuine Nissan part/accessory. Not warranted by Nissan. Refer to product manufacturer for warranty details. Nissan Limited Warranty does not cover damages or failures to the vehicle caused by improper installation or alterations of any Nissan-approved accessory or component. Contact your dealer/retailer for details. ³⁵4X4 models only. ³⁶Brake Assist cannot prevent all collisions and may not provide warning or braking in all conditions. Driver should monitor traffic conditions and brake as needed to prevent collisions. See Owner's Manual for safety information. ³⁷Vehicle Dynamic Control cannot prevent collisions due to abrupt steering, carelessness, or dangerous driving techniques. It should remain on when driving, except when freeing the vehicle from mud or snow. See Owner's Manual for safety information. ³⁸Tire Pressure Monitoring System is not a substitute for regular tire pressure checks. See Owner's Manual for safety information. ³⁹Vehicle must be on for the Easy-Fill Tire Alert to operate. ⁴⁰2022 EPA Fuel Economy Estimates: 21 City MPG / 26 Highway MPG / 23 Combined MPG for Pathfinder® S, SV, SL, Platinum 2WD. 21 City MPG / 27 Highway MPG / 23 Combined MPG for Pathfinder S, SV, SL 4WD. 20 City MPG / 25 Highway MPG / 22 Combined MPG for Pathfinder Platinum 4WD. Actual mileage may vary with driving conditions. Use for comparison only. ⁴¹Roadside Assistance available for a period of 36 months/36,000 miles from the date the vehicle is delivered to the first retail buyer or otherwise put into use, whichever is earlier. Google, Android, Android Auto and YouTube are trademarks of Google LLC. Apple CarPlay® is a registered trademark of Apple, Inc. Bluetooth® word mark and logos are owned by Bluetooth SIG, Inc. and any use of such marks by Nissan is under license. Bose® is a registered trademark of The Bose Corporation. Facebook® is a registered trademark of Facebook, Inc. HomeLink® is a registered trademark of Gentex Corporation. iPhone® is a registered trademark of Apple, Inc. All rights reserved. iPhone® or other external device not included. The Sirius®, XM®, and SiriusXM® names and all related marks and logos are trademarks of Sirius XM Radio Inc. Twitter® is a registered trademark of Twitter, Inc. Yakima® is a registered trademark of Yakima Products, Inc. This brochure is intended for general descriptive and informational purposes only. It is subject to change and does not constitute an offer, representation or warranty (express or implied) by Nissan North America, Inc. Interested parties should confirm the accuracy of any information in this brochure as it relates to a vehicle directly with Nissan North America, Inc., before relying on it to make a purchase decision. Nissan North America, Inc. reserves the right to make changes, at any time, without prior notice, in prices, colors, materials, equipment, specifications, and models and to discontinue models or equipment. Due to continuous product development and other pre- and post-production factors, actual vehicle, materials and specifications may vary from this brochure. Some vehicles shown with optional equipment. See the actual vehicle for complete accuracy. Availability and delivery times for particular models or equipment may vary. Specifications, options and accessories may differ in Hawaii, U.S. territories and other countries. For additional information on availability, options or accessories, see your Nissan dealer or contact Nissan North America, Inc. At NissanUSA.com, you'll find virtual product demonstrations, a way to "build your own Nissan," a dealer locator, and more information about key Nissan support services. Or if you'd prefer, call 1-800-NISSAN-3 for answers to specific questions about Pathfinder® or any other Nissan vehicle. The Nissan names, logos, product names, feature names, and slogans are trademarks owned by or licensed to Nissan Motor Co. Ltd. and/or its North American subsidiaries. Other trademarks and trade names are those of their respective owners. **Always wear your seat belt, and please drive responsibly.** ©2021 Nissan North America, Inc. 2203276-N-5/21-80K-KSL