

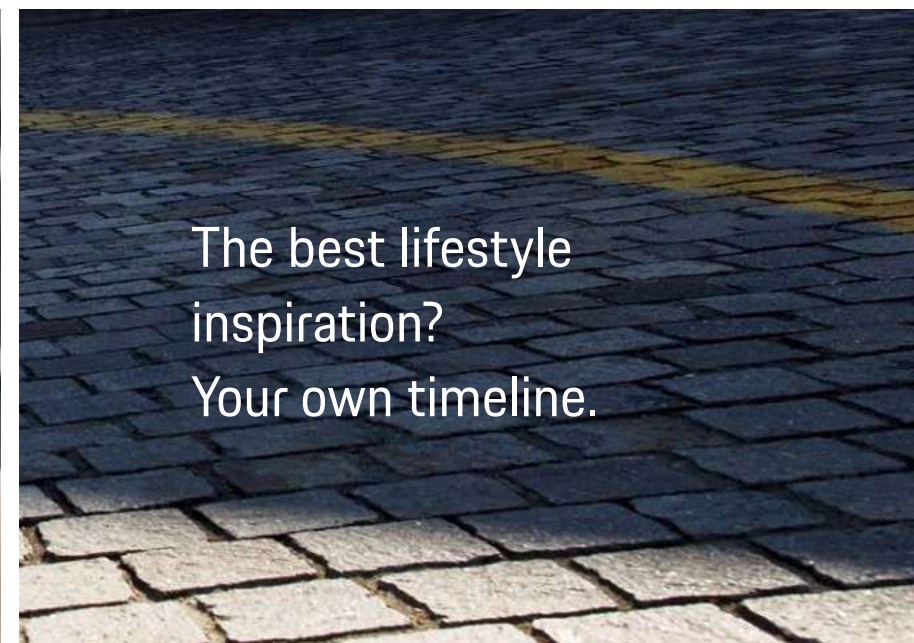


PORSCHE



The new Macan

Choose Thrilling.



The best lifestyle
inspiration?
Your own timeline.



Choose Thrilling.

Life is an adventure. We experience it with every fiber of our being, swept along into a current of possibilities. Mainstream has never been our thing; we prefer to remain unconventional. And feel alive. We never compromise, always making our own decisions. More adventure. More life. More thrills. And more acceleration.

What accompanies us? A sports car that embodies all of this. The new Macan.

All models shown in this brochure are European specifications. Some options shown may not be available in the U.S.

**We always follow our instincts.
And then surpass them.**

The Macan concept.

For decades, we have proven that we do not follow trends. We prefer to write our own adventure stories. A perfect example—the new Macan, a compact SUV that seamlessly combines sportiness, design, and everyday practicality.

These qualities are evident in all Macan models. And they explain why the Macan and Macan S have such a distinctive design. For instance, the new standard taillight strip lends the Macan a confident appearance. Striking LED headlights with 4-point daytime running lights and the 4-point brake lights are not only visual highlights, but also clear features of Porsche DNA. This visual appeal also extends to the interior where Porsche Communication Management (PCM) includes a large 10.9-inch touchscreen display and provides access to Porsche Connect services in full-HD.

But simply looking good is not enough. Those seeking adventure also need power. The new engine generation delivers an even more impressive performance. Because there's no time to lose before embarking upon your next adventure.





Design



For us, aesthetics are not superficial. They're an expression of our personality.



True character is formed when going against the grain.

Exterior design.

With its dynamic overall look, the Macan is unmistakably a sports car. Its redesigned rear appears extremely powerful. Like a bold line under its own signature, the new taillight strip emphasizes the Porsche logo, functionally and visually enhanced by the new 4-point brake lights.

The broad shoulders above its rear wheels are reminiscent of the muscular form of the 911. And a further visual demonstration of the road-hugging nature of the new Macan.

Its flank is also typical Porsche. The roofline slopes to the rear just like a coupe, creating a characteristic sports car contour with high aerodynamic quality. Our designers call this the Porsche flyline.





Into your sports car.
And straight into the world.

Interior design.

You are seeking one adventure after another. Here's how to keep them in view. The sporty front seats convey the authentic Macan feeling: sitting high above the road, yet still closely connected to it.

As a sports car manufacturer, we understand that a car and its driver must form a single entity. So you do not simply sit in the Macan, but thanks to its architecture—you are integrated into the vehicle.

The three-dimensional arrangement of the controls lends the interior a cockpit character. The distance between the standard multifunction steering wheel, the Porsche Doppelkupplung (PDK) gear selector, and other main vehicle functions is extremely short due to the ascending center console, characteristic of most sports cars. The ignition is on the left—traditional Porsche.

We are particularly proud of the 10.9-inch touchscreen display used for the Porsche Communication Management (PCM) system. The new design boasts full-HD resolution and a start screen that can be personalized. The new, intuitive menu provides even faster access to the main functions.



5

- 1 18-inch Macan wheel
- 2 18-inch Macan S wheel
- 3 19-inch Macan Sport wheel
- 4 19-inch Macan Design wheel
- 5 20-inch Macan Turbo wheel
painted in High-Gloss Black
Porsche Exclusive Manufaktur
- 6 20-inch Macan Turbo wheel
in Satin Platinum
- 7 21-inch RS Spyder Design wheel
- 8 21-inch 911 Turbo Design wheel
- 9 21-inch Sport Classic wheel
Porsche Exclusive Manufaktur



1



2



3



4



5



6



7



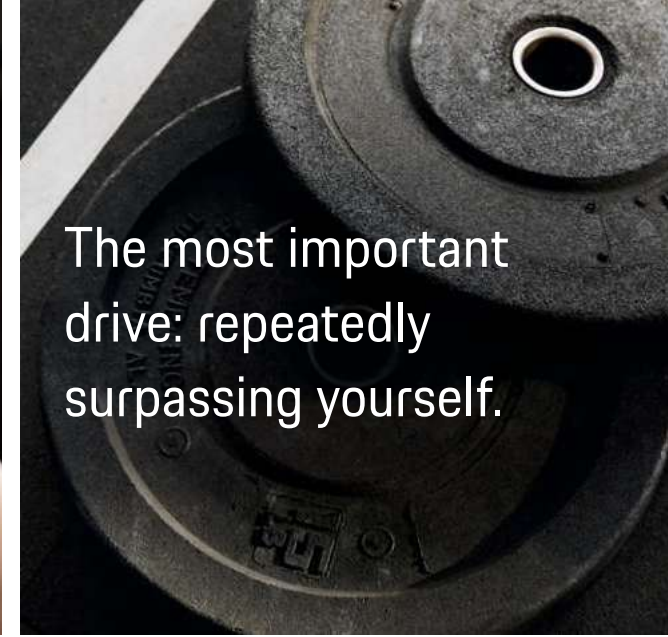
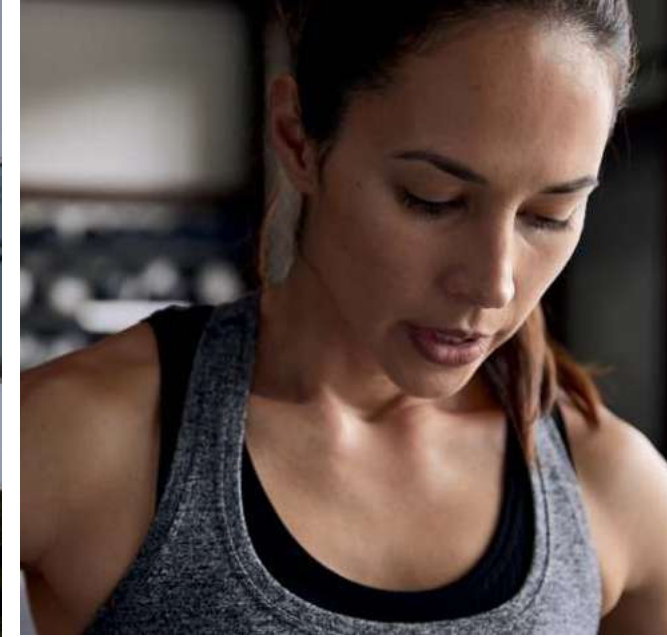
8



9



Drive and chassis



The most important drive: repeatedly surpassing yourself.



A genuine thirst for adventure cannot be quenched. But should be encouraged.

Performance and handling.

It is no longer just about simply traveling from point A to point B. Along the way, there is much to discover. And experience. We want to feel our lives are dynamic. On the road. And in a sports car.

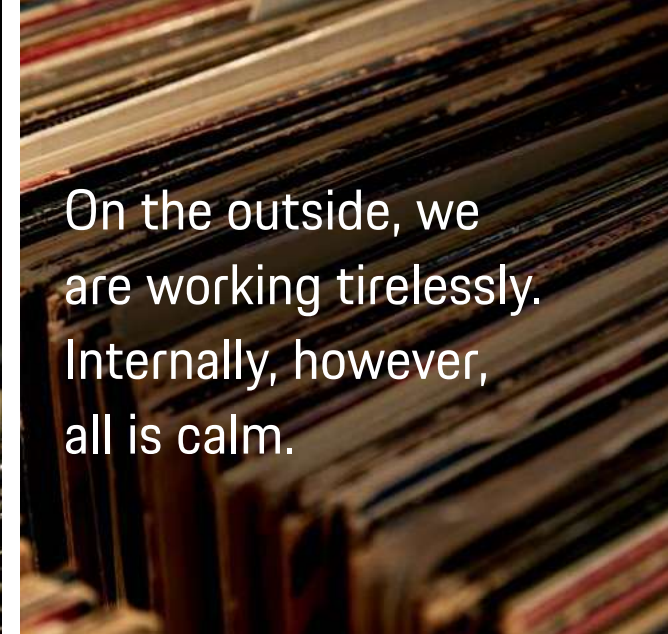
Every Porsche delivers more than power alone. For example, the active all-wheel drive system, Porsche Traction Management (PTM), offers traction, outstanding steering, and exceptional handling—clear evidence of traditional Porsche engineering.

And what about comfort? It is in plentiful supply, of course, with all the sporty control features. The optional air suspension guarantees a constant ride height—on any terrain. Porsche Active Suspension Management (PASM) also actively and continuously adjusts damping force for each individual wheel. The result? Increased comfort and sportiness in every seat.





Comfort and entertainment



On the outside, we are working tirelessly. Internally, however, all is calm.





**Designed around you.
Enhancing your journey.**

Comfort.

For us, driving a sports car is an intense experience, involving all our senses. But endorphins and adrenaline are not just released by performance.

The interior of the new Macan makes you feel happy as soon as you get in. The optional high-quality leather interior, the ascending center console, and the optional multifunctional GT Sport Steering wheel contribute to the genuine sports car feeling.

Your ears are also in for a treat. The optional Sport Exhaust System makes the typical Porsche sound even more powerful. The same applies to the audio experience: the Bose® Surround Sound System and Burmester® High-End Surround Sound System are available as options in the Macan models.

For optimal comfort while enjoying the experience, 3-zone automatic climate control is standard. The optional Ionizer is a new addition for improved air quality that enhances your well-being.

Every day is an experience.
Make the most of it.

Porsche Connect.

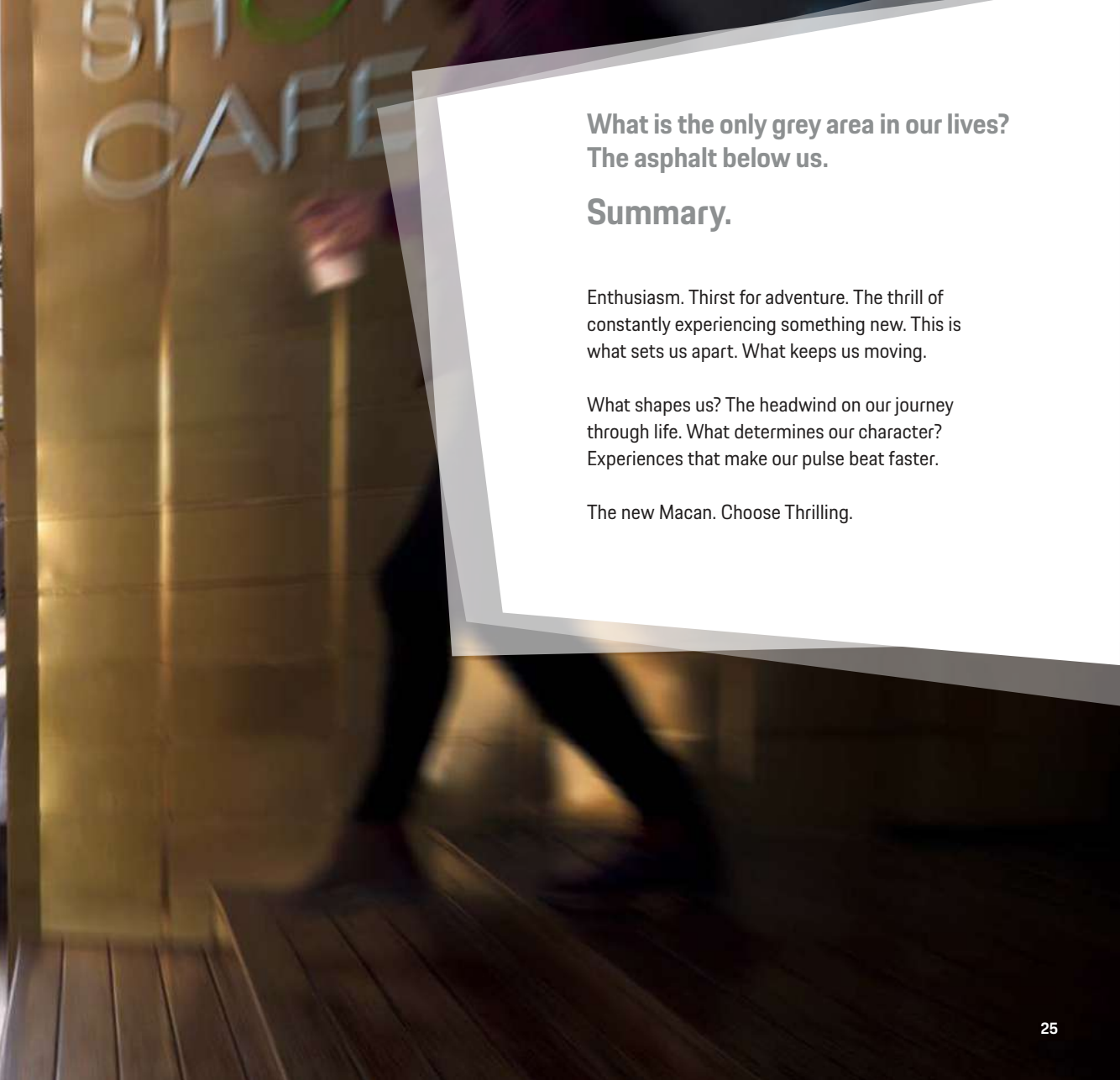
We are constantly on the move, and want to know what is happening around us. The new 10.9-inch touchscreen display with full-HD resolution provides more interfaces with a personalized start screen that is easy and intuitive to use.

The standard online navigation system ensures that you arrive at your next adventure promptly. Porsche Connect Plus assists you with real-time traffic information and online map updates. The Porsche Connect app allows you to send your destination to your Macan from your mobile device.

What else do you need for your journey? Your own soundtrack, of course, easily accessed with the music streaming function of the Porsche Connect app.



Porsche Connect services include an initial free subscription period, the length of which may vary by service package and country but shall not be less than three months. In certain countries, none or only some Porsche Connect services are available. In certain countries, an embedded SIM card with data volume is also included in the price for the use of selected Porsche Connect services. To access the Wi-Fi hotspot and other Porsche Connect services, such as music streaming, using the embedded SIM card, a data package is available to purchase in the Porsche Connect Store in these countries. Alternatively, you can use your own SIM card to establish a data connection. Further information about the free subscription periods as well as the follow-on costs and availability of individual services in your country is available online at www.porscheusa.com/connect or from your authorized Porsche dealer. European model shown.



What is the only grey area in our lives?
The asphalt below us.

Summary.

Enthusiasm. Thirst for adventure. The thrill of constantly experiencing something new. This is what sets us apart. What keeps us moving.

What shapes us? The headwind on our journey through life. What determines our character? Experiences that make our pulse beat faster.

The new Macan. Choose Thrilling.

Exterior colors.

Solid exterior colors



White



Black

Special exterior colors



Chalk



Carmine Red



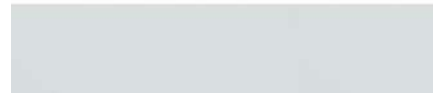
Miami Blue



Metallic exterior colors



Volcano Grey Metallic



Carrara White Metallic



Mahogany Metallic*



Dolomite Silver Metallic



Sapphire Blue Metallic



Night Blue Metallic



Jet Black Metallic



Mamba Green Metallic

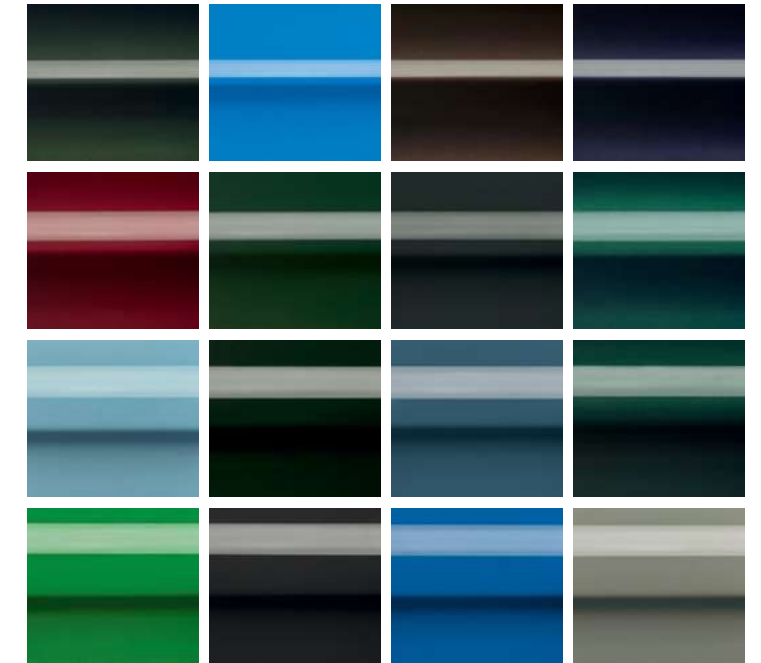


Color of your choice

Highlight the individuality of your Porsche with a color developed specially for you, based on your sample.

Custom exterior colors

Choose from an extended range of solid and metallic colors with a number of historic Porsche and classic colors.



*Mahogany not available on Macan Standard Model 2.01

Interior colors.

Standard interior



Agate Grey

Standard interior with leather package / partial leather seats*



Black



Agate Grey

Leather interior / leather seats



Black



Agate Grey

Standard interior with Alcantara® seat centers



Black



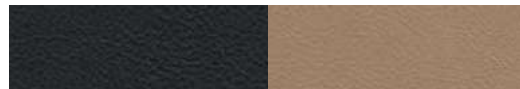
Black and Garnet Red



Agate Grey and Pebble Grey



Agate Grey



Black and Mojave Beige



Black and Garnet Red



Black and Mojave Beige

Natural leather interior / natural leather seats



Espresso



Black and Mojave Beige

Interior packages.



Black



High-Gloss Black



Painted

Porsche Exclusive Manufaktur



Brushed Aluminum

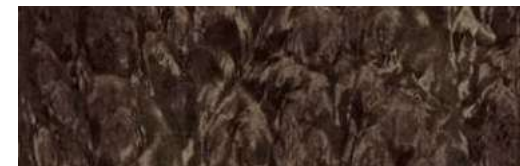


Carbon



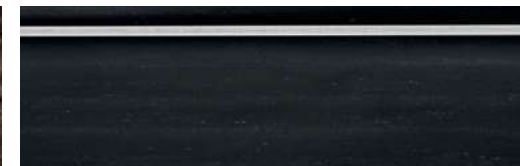
Leather

Porsche Exclusive Manufaktur



Dark Walnut**

Porsche Exclusive Manufaktur



Anthracite Chestnut**†

Porsche Exclusive Manufaktur

*The leather package (partial leather interior) incorporates a leather lining on the dashboard, center console storage compartment lid, seat centers, inner seat bolsters, seat headrests, armrests, door panels, and door handles. In conjunction with a two-tone color combination, leather items are in a contrasting color.

**Since wood is a natural product, there may be variations in color and grain.

†Decorative steering wheel also available from Porsche Exclusive Manufaktur.

Technical data.

	2019 Macan	2019 Macan S
Engine		
Type	Turbocharged inline 4	Turbocharged V6
Cylinders	4	6
Displacement	2.0 liters	3.0 liters
Max. power (DIN) at rpm	248 hp between 5,000–6,750	348 hp between 5,400–6,400
Max. torque at rpm	273 lb.-ft. between 1,600–4,500	352 lb.-ft. between 1,360–4,800
Transmission		
Drivetrain	All-wheel drive	All-wheel drive
Automatic transmission	7-speed Porsche Doppelkupplung (PDK)	7-speed Porsche Doppelkupplung (PDK)
Chassis		
Front axle	Double-wishbone suspension	Double-wishbone suspension
Rear axle	Self-tracking trapezoidal link suspension	Self-tracking trapezoidal link suspension
Steering	Power Steering Plus	Power Steering Plus
Brakes	Front: 345 mm internally vented brake rotors with 4-piston aluminum monobloc fixed calipers Rear: 330 mm internally vented brake rotors with floating calipers	Front: 360 mm internally vented brake rotors with 6-piston aluminum monobloc fixed calipers Rear: 330 mm internally vented brake rotors with floating calipers
Standard wheels	Front: 8.0 J x 18 ET 21 Rear: 9.0 J x 18 ET 21	Front: 8.5 x 19 ET 21 Rear: 9.5 x 19 ET 21
Standard tires	Front: 235/60 R 18 103W Rear: 255/55 R 18 105W	Front: 235/55 R 19 101Y Rear: 255/50 R19 103Y

Technical data.

	2019 Macan	2019 Macan S
Weights		
Curb weight (lbs.)	4,099	4,293
Gross Vehicle Weight Rating (GVWR) (lbs.)	5,534	5,688
Performance		
Top track speed (mph)	141	157
0–60 mph (seconds)	6.3	5.1
Sport Chrono Package 0–60 mph w/performance start (seconds)	6.1	4.9
Fuel consumption*		
City (mpg)	TBD	TBD
Highway (mpg)	TBD	TBD
Combined (mpg)	TBD	TBD
Dimensions/aerodynamics		
Length (in.)	184.9	184.9
Width, including exterior mirrors (with exterior mirrors folded) (in.)	82.6 (76.2)	82.6 (76.2)
Height (including roof rails) (in.)	63.9	63.9
Wheelbase (in.)	110.5	110.5
Fuel tank capacity (gal.)	19.8	19.8
Drag coefficient (Cd)	0.35	0.36

*U.S. EPA estimates. Your mileage and range may vary. Some model year 2019 EPA figures are yet to be determined. Please see your authorized Porsche dealer or visit www.porscheusa.com for the latest information.

A Few Important Words About Porsche Driver Assistance Systems...

- 1 None of Porsche's Driver Assistance Systems can prevent accidents or loss of control.
- 2 No Driver Assistance System is ever a substitute for attentive driving. It is the driver's responsibility to be observant and in control of the vehicle at all times.
- 3 Please see your vehicle's owner's manual for further details about, and important limitations of, each of the specific systems described below.

LANE KEEP ASSIST WITH TRAFFIC SIGN RECOGNITION

- 1 Lane Keep Assist may not detect lane markers in certain road, weather, or driving conditions. Please see owner's manual for further details and important warnings about limitations of the system.
- 2 This system depends in part on signals from the worldwide Global Positioning Satellite network. The vehicle's electronic system and data connection, and existing wireless satellite technology, must be available and operating properly for the system to function fully.
- 3 Traffic Sign Recognition may not always see or understand every sign. It depends upon a clear, unobstructed view of the road ahead, and well-maintained and clean road signs of generally recognized types.

WARN AND BRAKE ASSIST

- 1 Warn and Brake Assist cannot prevent most collisions, although it may help to reduce their severity.
- 2 In addition, Warn and Brake Assist may not detect every object in the road.
- 3 The system may not operate if certain evasive maneuvers are performed by the driver.

NIGHT VISION ASSIST

- 1 Night Vision Assist does not prevent accidents. The system may not represent objects as the eye does. It will not detect persons or animals under certain lighting and temperature conditions, and it cannot detect inanimate objects in the road.

PORSCHE INNODRIVE WITH ADAPTIVE CRUISE CONTROL

- 1 Innodrive depends in part on signals from the worldwide Global Positioning Satellite network. The vehicle's electronic system and

data connection, and existing wireless satellite technology, must be available and operating properly for the system to function fully.

- 2 Construction zones, traffic flow, and other road system changes are beyond the control of Porsche Cars North America. Complete detailed mapping of lanes, roads, streets, toll roads, tollbooths, highways, road signs, and so forth is impossible. Therefore, you may encounter discrepancies between the mapping and the actual location and conditions you encounter. Always pay careful attention to the road, give precedence to directional signs on the road and not the system, and do not drive while distracted.

ACTIVE LANE KEEP ASSIST

- 1 Active Lane Keep may not detect lane markings in certain road, weather, and driving conditions.

INTERSECTION ASSIST

- 1 This system detects only other vehicles, but not people, cyclists, or animals, for example.

AUTO EMERGENCY STOP

- 1 Auto Emergency Stop depends in part on signals from the worldwide Global Positioning Satellite network. The vehicle's electronic system and data connection, and existing wireless satellite technology, must be available and operating properly for the system to function fully.

WET MODE

- 1 Wet Mode depends on sensors in the front wheel arches. It cannot provide assistance if there is too much water present, if the vehicle is driving too fast, or if the sensors are obstructed by dirt, excessive water, or other obstructions.

Not all the Driver Assistance Systems described in this brochure are installed or available on every model. Some Driver Assistance Systems are optional at extra cost. Some Driver Assistance Systems require the selection of other systems or options at additional cost. Some Driver Assistance Systems are not available in combination with others. Ask your authorized Porsche dealer for details about the models and systems in which you are interested.





Porsche Cars North America, Inc.
One Porsche Drive
Atlanta, Georgia 30354-1654



Dr. Ing. h.c. F. Porsche AG is the owner of numerous trademarks, both registered and unregistered, including without limitation the Porsche Crest®, Porsche®, Boxster®, Carrera®, Cayenne®, Cayman®, Macan®, Panamera®, Spyder®, Tiptronic®, VarioCam®, PCM®, PDK®, 911®, 718®, RS®, 4S®, 918 Spyder®, FOUR UNCOMPROMISED®, and the model numbers and distinctive shapes of the Porsche automobiles such as, the federally registered 911 and Boxster automobiles. The third party trademarks contained herein are the properties of their respective owners. All text, images, and other content in this publication are protected by copyright. No part of this publication may be reproduced in any form or by any means without prior written permission of Porsche Cars North America, Inc. Some vehicles may be shown with non-U.S. equipment. Porsche recommends seat belt usage and observance of traffic laws at all times.

All fuel consumption and emissions data contained herein are derived from U.S. tests and were accurate at time of printing. Actual results may vary.